



St. James Farm Forest Preserve

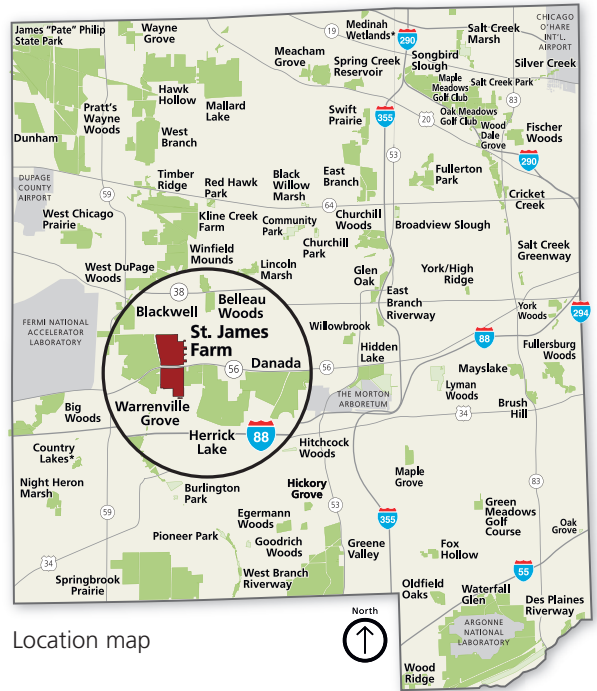
Master Plan ■ February 2010

history

In 1920, Chauncey and Marion McCormick purchased St. James Farm as a private retreat to accommodate their interests in horses and dairy farming. The McCormicks' son, Brooks, later transformed St. James Farm into a renowned equestrian facility. Brooks McCormick sold St. James Farm as a life estate to the Forest Preserve District of DuPage County in 2000. The Forest Preserve District officially took possession of the 607-acre property in 2007.

vision

To develop a multi-faceted facility that fosters an appreciation of the unique individual character, secluded solitude, cultural history, and natural resources of St. James Farm Forest Preserve for the pleasure, education, and recreation of the public



Location map

goals and objectives

GOAL Provide recreational opportunities for people of all abilities
Objectives

- Trails that provide high quality experiences
- Trails with a hard surface for mobility-impaired users
- Picnic areas

GOAL Provide recreational and educational activities that recognize the equestrian heritage of St. James Farm
Objectives

- Incorporation of historic trail alignments
- Horsemanship clinics, seminars and instructional classes
- Carriage rides

GOAL Provide connections between St. James Farm and adjacent open spaces and other recreational amenities
Objectives

- Trail connections to regional and forest preserve trails
- Large-scale landscape connections

GOAL Enhance, restore, and protect waterways, wetlands, prairies, savannas and woodlands
Objectives

- Large-scale habitat restoration south of Butterfield Road
- Restoration of Spring Brook and its floodplain

- Protection of Bremme Creek wetland resources
- Restoration of agricultural and manicured turf areas
- Restoration of existing woodlands

GOAL Interpret the cultural history and natural features of St. James Farm
Objectives

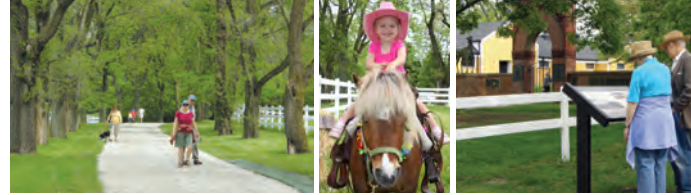
- Interpret important buildings, facilities, natural features, and historical and cultural elements

GOAL Develop and operate St. James Farm's facilities in a sustainable way that minimizes impact on the environment
Objectives

- Environmentally responsible renovations, site and infrastructure design, and maintenance and operations practices
- Implementation of the use of green energy sources and reduction of energy consumption

GOAL Use St. James Farm's unique setting for special events
Objectives

- Provide designated space for small, intimate events
- Allow flexibility for large-scale events that could take place in many locations at St. James Farm



summary

NORTHERN PRESERVE AREA

- Main Farm — main interpretive area with historic stables, barns and support buildings
- East Farm — special-event area with existing show stable, picnic pavilion, dressage and jumping arenas
- Chamossaire picnic area — picnic shelter, restrooms and parking
- Catch-and-release fishing pond
- North Farm (near Mack Road) — trailhead and picnic area and stream restoration



CIRCULATION, PARKING AND TRAILS

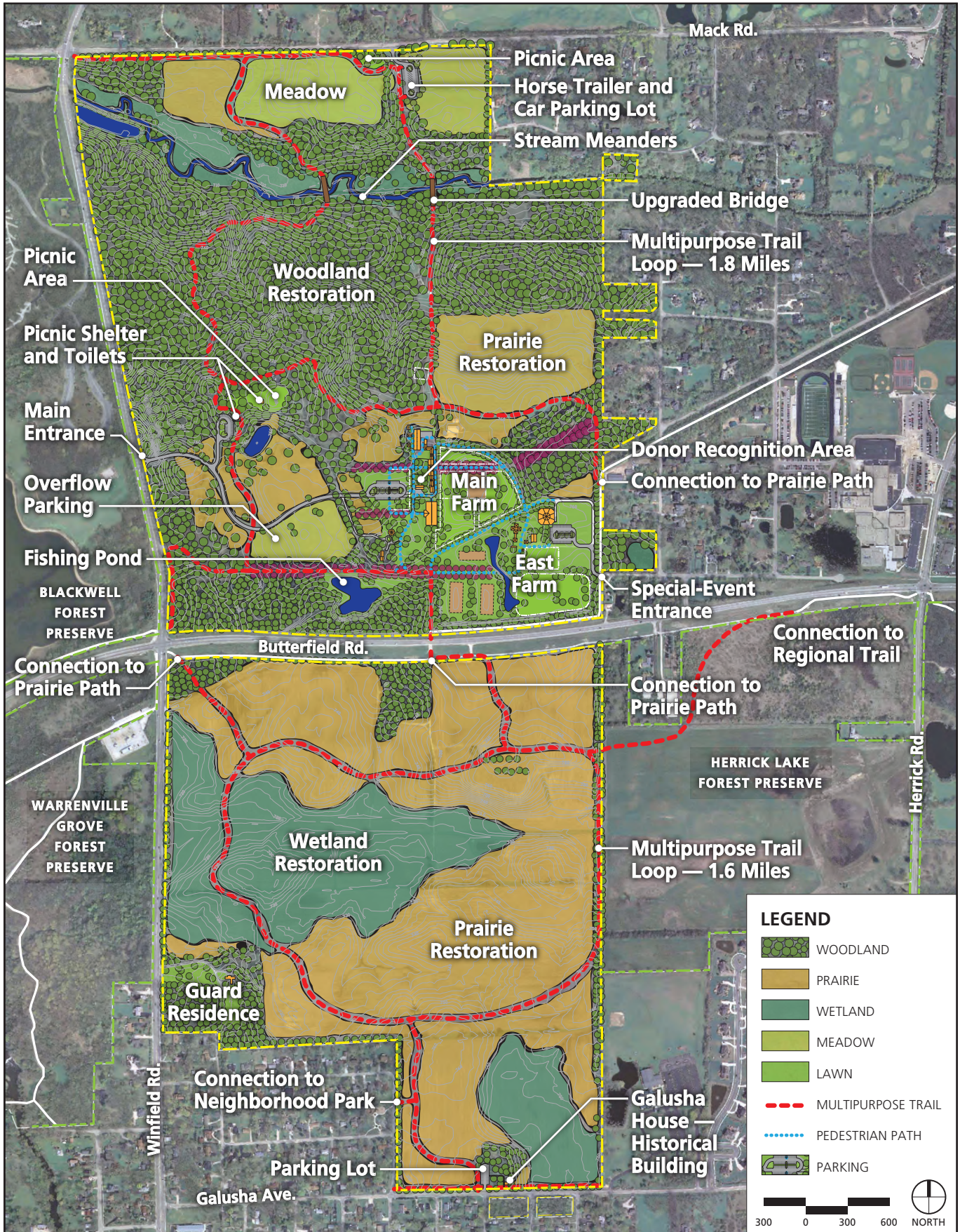
- Main entrance from Winfield Road and parking near Main Farm
- Entrance from Hoy Avenue and trailer access from Mack Road utilizing the trail for special events only
- Multipurpose trail loop through woodlands complemented by existing sculptures with connections to Illinois Prairie Path and other forest preserve trails
- Separate pedestrian trails in Main and East Farm areas



SOUTHERN PRESERVE AREA

- Prairie and wetland restoration
- Multipurpose trails with connections to local and regional trails
- Galusha House historical interpretation



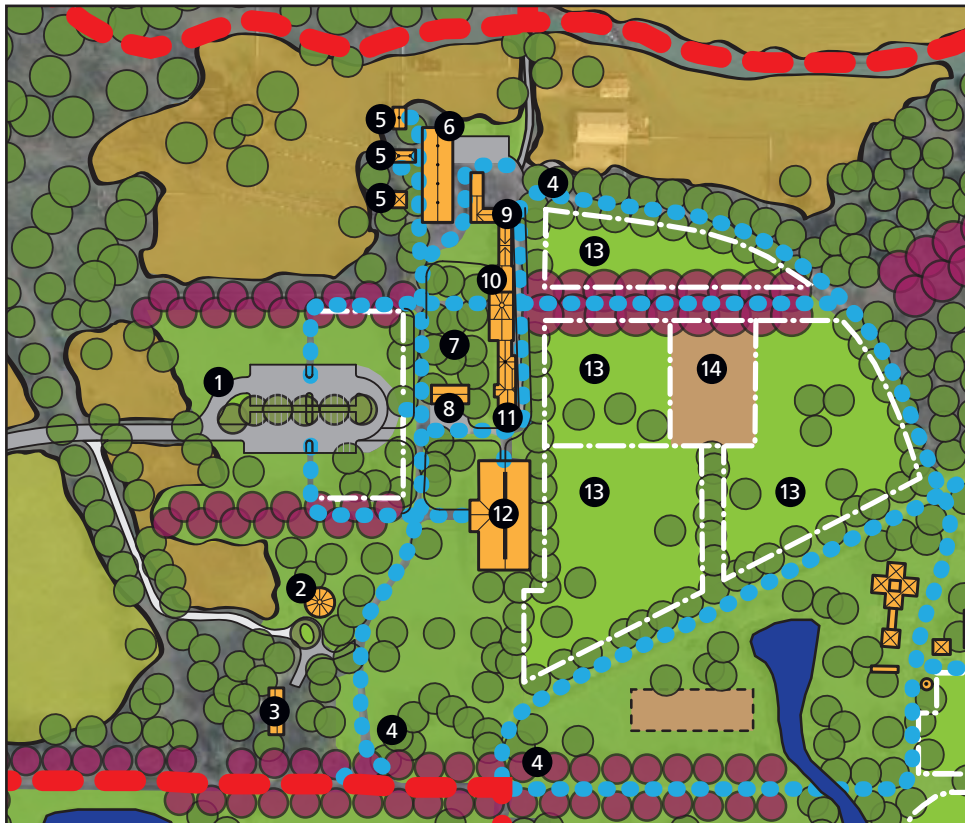


St. James Farm Forest Preserve Master Plan

Overall Plan

January 2010





- 1 Main Parking Lot
- 2 Volunteer Headquarters
- 3 Guard Residence
- 4 Bike Parking
- 5 Dairy Outbuildings
Daily Historical Interpretation
- 6 Dairy Barn
Storage
- 7 Donor Recognition Area
- 8 Site Manager's Office/
Public Restrooms
- 9 Farm Workshop
Historical Displays
- 10 Brick Stables
Short Term Stabling and
Historical Interpretation
- 11 Block Stables
Short Term Stabling
- 12 Indoor Arena
- 13 Paddock
- 14 Practice Arena

Main Farm

Enlarged Plan



- 1 Bike Parking
- 2 Practice Dressage
- 3 Dressage Arena
- 4 Connection to Prairie Path
at Existing Underpass
- 5 Pavilion/Reservable
Picnic Shelter
- 6 Caboose
- 7 Public Restrooms
- 8 East Farm Barn
Flexible Support Space
- 9 Show Stable
Special-Event Stabling
- 10 Special-Event Parking Only
- 11 Practice Jumping
- 12 Stadium Jumping
- 13 Gravel Drive
- 14 Special-Event Entrance
- 15 Illinois Prairie Path

East Farm

Enlarged Plan

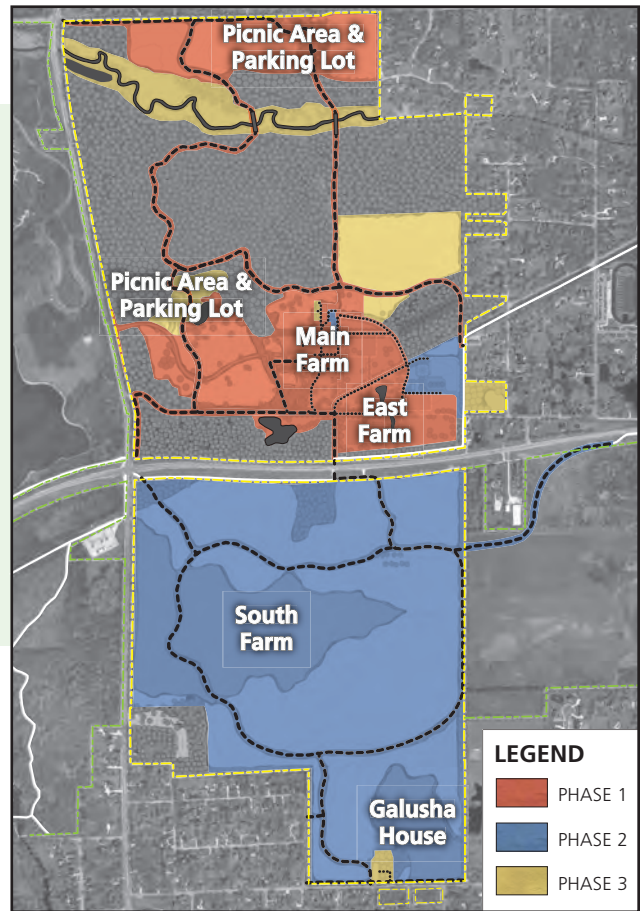


implementation

PHASING *Plan Rationale*

The phasing plan is designed to increase public access to St. James Farm Forest Preserve by creating an infrastructure to accommodate preserve users in the near future and then allowing for other master plan elements to be fulfilled as funding becomes available. To begin, Phase 1 focuses on the development of parking lots and trails and the connection of water and sewer lines to upgrade priority structures for public use. Phase 2 will then concentrate on the restoration of the remaining Main and East farms' structures and the South Farm area, including the coordination and construction of trails. The remaining elements of the plan, including the Chamossaire picnic area, smaller structures for historical interpretation and the restoration of Spring Brook, will then be implemented in the long-term, through Phase 3.

St. James Farm Master Plan
Phasing Plan



PHASES	TIME FRAME	REQUIRED FUNDING*
PHASE 1 <ul style="list-style-type: none"> ■ Water line and sanitary sewer connections ■ Main parking lot/access road ■ Main Farm path improvements and site amenities ■ Multipurpose trail segments (loop connecting to Prairie Path) ■ Indoor arena ■ Block stables ■ Volunteer headquarters building ■ East Farm equestrian facilities ■ Dairy barn (upgrades for storage) ■ Demolish unneeded farm buildings ■ Pavilion ■ Multipurpose trail segments (woodland loop to Mack Road including bridges) ■ Mack Road parking lot/picnic area ■ Site manager's office/restroom building ■ Natural areas restoration at Main Farm and along Mack Road 	0 – 7 Years	\$12,740,000
PHASE 2 <ul style="list-style-type: none"> ■ East Farm parking lot/circulation upgrades ■ East Farm restrooms ■ Show stable ■ Brick stables ■ Farm workshop ■ South Farm multipurpose trails ■ South Farm restoration 	8 – 15 Years	\$15,720,000
PHASE 3 <ul style="list-style-type: none"> ■ Chamossaire parking lot and picnic area ■ Galusha House parking lot ■ Main Farm dairy outbuildings ■ East Farm barn ■ Spring Brook restoration ■ North farm alfalfa field restoration 	16 – 20 Years	\$5,790,000

*Note: Prices are subject to inflation of up to 5 percent per year

Total \$34,250,000



View of main farm area

funding opportunities

- Capital funds
 - Referendum funds
 - Endowment funds
 - Private donations
 - Sponsorships
 - Partnerships
- Potential grant sources
 - National Fish and Wildlife Foundation
 - National Endowment for the Humanities
 - The National Trust for Historic Preservation
 - National Institute for Conservation
 - U.S. Fish and Wildlife Service
 - U.S. Environmental Protection Agency
 - Federal Highway Administration
 - Water Resources Development Act
 - National Park Service
 - Illinois Department of Natural Resources
 - Illinois Department of Transportation
 - Illinois Historic Preservation Agency
 - Illinois Humanities Council
 - Landmarks Illinois



FOREST PRESERVE DISTRICT BOARD OF COMMISSIONERS

D. "Dewey" Pierotti, Jr., *President*
 Joseph Cantore
 Michael Formento
 Roger Kotecki
 Marsha Murphy
 Linda Painter
 Carl Schultz

ST. JAMES FARM SPECIAL COMMITTEE

D. "Dewey" Pierotti, Jr., *Chairman*
 Carl Schultz, *Vice-Chairman*
 Wallace Brown
 Tim Curtin
 Robert Hutchinson
 Roger Kotecki
 Patti Mehling
 Marsha Murphy

ST. JAMES FARM DEVELOPMENT COMMITTEE

Patti Mehling, *Chairperson*
 Becky Bowen
 Grace Frejlach-Grubb
 Carol Hancock
 Katie Lindsay
 Joy Meierhans
 Sheryl Togami
 Peter Veit
 Nancy Winkelman
 Cynthia Zitko