



31 Blusa Top

Skill Level Intermediate
Yarn Weight: #3

SIZES
 • Top is sized to fit Women's Small (Medium, Large, X-Large).

FINISHED MEASUREMENTS
 • Bust 35 (38, 42, 46)"

DESIGNER'S NOTES

- Lower edges of right and left fronts are worked separately, forming a slit at lower edge of center front; pieces are then joined and worked in one piece to shoulders, with Cable panel worked at center Front.
- Openwork on Cable Panel, each side of cable, is created by dropping a st, after piece is completed.

STICH GLOSSARY

Twisted St P1-tbl on RS

C4B Sl 2 sts to cn, hold in back, K2, K2 from cn

CABLE PANEL (worked over 14 center Front sts) – also see Chart. [on page 3]

Rows 1, 3, 5 and 7 (RS): [P1-tbl] twice, K1, P2, K4, P2, K1, [P1-tbl] twice.

Rows 2, 4, 6, 8 and 10: K2, P1, K2, P4, K2, P1, K2.

Row 9: [P1-tbl] twice, K1, P2, C4B, P2, K1, [P1-tbl] twice.

Rows 11 and 12: Rep Rows 1 and 2.
 Rep Rows 1–12 for Cable Panel.

BACK

CO 94 (104, 114, 124) sts. **Row 1 (RS)** K1, P1; rep from * across. **Rows 2–4:** Knit the knit sts and purl the purl sts as they face you for 1x1 rib. Beg St st; work even until piece meas 2¾" from CO, end after a WSR.

Shape Sides

Dec Row (RS): K5, ssk, work across to last 7 st; K2tog, K5 [2 sts dec'd]. Work 5 rows even. Rep last 6 rows 2 (3, 4, 5) times [88 (96, 104, 112) sts rem]. Work even until piece meas 8¾" from CO, end after a WSR. **Inc Row (RS):** K5, M1, work across to last 5 sts; M1, K5 [2 sts inc'd]. Work even for 5 rows. Rep last 6 rows 1 (1, 2, 3) times [92 (100, 110, 120) sts]. Work even until piece meas 13¾" from CO, end after WSR.

Shape Armholes

Next row (RS): Cont in St st, K3, ssk, work across to last 5 sts; K2tog, K3 [2 sts dec'd]. Work 1 row even. Rep last 2 rows 6 (6, 9, 10) times [78 (86, 90, 98) sts rem]. Work even until

- Length 21 (21¼, 21½, 22)"
- Upper Arm 11 (11¼, 11½, 12½)"

MATERIALS

- 4 (4, 4, 5) 100 g (218) yd skeins **Omega Yarns Sinfonia** (100% cotton) color #828 Lilac
- Size 4 US (3.5 mm) needles OR SIZE TO OBTAIN GAUGE
- Stitch markers, cable needle, yarn needle

GAUGE

- 21 sts x 31 rows = 4" in St st
 - 1 repeat of cable pat = 2¾", blocked
- TO SAVE TIME, TAKE TIME TO CHECK GAUGE

armhole meas $6\frac{1}{4}$ (7, $7\frac{1}{4}$, $7\frac{3}{4}$)" from beg of shaping, end after WSR; pm each side of center 42 (44, 46, 48) sts.

Shape Neck

Next row (RS): Work 18 (21, 22, 25) sts in St st; change to 1x1 rib, work across center 42 (44, 46, 48) sts, work to end in St st [18 (21, 22, 25) sts each side for shoulders in St st; neck sts in 1x1 rib]. Work even until armhole meas $7\frac{1}{4}$ ($7\frac{1}{2}$, $7\frac{3}{4}$, $8\frac{1}{4}$)" from beg of shaping. BO all sts in patt..

FRONT

Lower Right Front

CO 47 (52, 57, 62) sts. **Row 1 (RS):** P1, K1; rep from * across to last 1 (0, 1, 0) sts; P1 (0, 1, 0). **Rows 2-4:** Knit the knit sts and purl the purl sts as they face you for 1x1 rib.

Establish Pattern (also see 7-st Chart)

Row 1 (RS): Beg at center front, K2, P2 (2x2 rib), YO (this is anchor for dropped st), [sl 1, P1, pssol, P1, pm, knit to end [1 st inc'd, 1 st dec'd - st count rem same]]. **Row 2:** Purl to m, slm, K2, P1 (the yo), work in rib to end. **Row 3:** Work 4 sts rib, K1, [P1-tbl] twice, slm, work in St st to end. **Row 4:** Work in St st to m, slm, K2, P1, work in rib to end. Work even, rep Rows 3 and 4, until piece meas 2" from CO, end after WSR. Place sts on stitch holder; break yarn.

Lower Left Front

CO 47 (52, 57, 62) sts. **Row 1 (RS):** P1 (0, 1, 0), *K1, P1; rep from * across. **Rows 2-4:** Knit the knit sts and purl the purl sts as they face you for 1x1 rib.

Establish Pattern (also see 7-st Chart)

Row 1 (RS): Beg at side edge, knit across to last 7 sts, pm, P1, [sl 1, P1, pssol], YO, P2, K2. **Row 2:** Work 4 sts in rib, P1 (the yo), K2, slm, purl to end. **Row 3:** Work in St st to m, slm, [P1-tbl] twice, K1, work in rib to end. **Row 4:** Work 4 sts in rib, P1, K2, slm, work in St st to end. Work even, rep Rows 3 and 4, until piece meas 2" from CO, end after WSR, turn.

Join Fronts (also see Joining rows on Cable Panel Chart)

Next row (RS): Cont on Left Front sts, work in St st to m, slm, [P1-tbl] twice, K1, P2, sl last 2 sts of Left Front to stitch holder or cn. Place sts of Right Front on spare ndl. Knit first 2 sts of Right Front, knit last 2 sts of Left Front (first C4B shown on Cable Panel Chart, joining Right Front and Left Front); cont on Right Front sts, P2, K1, [P1-tbl] twice, sl m, work in St st to end [94 (104, 114, 124) sts; 40 (45, 50, 55) sts each side of markers; 14 sts between markers for Cable Panel]. **Next row (WS):** Work even in patt (second joining row on Chart). **Next row (RS):** Keeping sts each side of markers in St st, work Row 1 of Cable Panel Chart across center 14 sts, then rep Rows 1-12 on center sts for rem of piece, **while at the same time**, work even until piece meas $2\frac{3}{4}$ " from CO, end after a WSR.

Shape Sides

Dec Row (RS): K5, ssk, patt to last 7 sts; K2tog, K5 [2 sts dec'd]. Work 5 rows even. Rep last 6 rows 2 (3, 4, 5) times [88 (96, 104, 112) sts rem]. Work even until piece meas $8\frac{1}{4}$ " from CO, end after a WSR. **Inc Row (RS):** K5, M1, work across to last 5 sts, M1, K5 [2 sts inc'd]. Work even for 5 rows. Rep last 6 rows 1 (1, 2, 3) times [92 (100, 110, 120) sts]. Work even until piece meas $13\frac{3}{4}$ " from CO, end after WSR.

Shape Armholes and Neck

Next row (RS): K3, ssk, patt to last 5 sts; K2tog, K3 [2 sts dec'd]. Work 1 row even. Rep last 2 rows 6 (6, 9, 10) times for armhole shaping, then work armhole even while completing neck shaping; **while at the same time**, when armhole meas $\frac{3}{4}$ " from beg of shaping ($1\frac{1}{4}$ " from CO), end after a WSR. Working each side separately, divide for neck.

Left Neck

Next row (RS): Work across to 6 sts past first m, K2tog (center 2 sts of Cable), *then knit same sts tog-tbl*; place second st made on LH ndl, turn, leaving rem sts unworked for Right Front [7 sts after m at neck edge]. **Next row (WS):** K1 (edge st, keep in Garter st for remainder of piece), patt to end. **Neck Dec Row (RS):** Work across to 2 sts before m, K2tog, slm, patt to end [1 st dec'd at neck edge]. Cont in patt, work 1 row even. Rep last 2 rows 20 (21, 22, 23) times [18 (21, 22, 25) sts rem for shoulder]. Work even until armhole meas $7\frac{1}{4}$ ($7\frac{1}{2}$, $7\frac{3}{4}$, $8\frac{1}{4}$)" from beg of shaping, end after RSR at neck edge. **Next row (WS):** Work 4 sts in patt, drop next st and unravel down to yo on first row above 1x1 rib, K2, slm, work to end. BO all sts.

Right Neck

With RS facing, join yarn at neck edge; K1 (edge st, keep in Garter st for remainder of piece), patt to end. **Next row (WS):** Work even in patt. **Dec Row (RS):** Patt to m, slm, ssk, work to end [1 st dec'd at neck edge]. Cont in patt, work 1 row even. Rep last 2 rows 20 (21, 22, 23) times [18 (21, 22, 25) sts rem for shoulder]. Work even until armhole meas $7\frac{1}{4}$ ($7\frac{1}{2}$, $7\frac{3}{4}$, $8\frac{1}{4}$)" from beg of shaping, end after WSR at neck edge. **Next row (RS):** Work 4 sts in patt, drop next st and unravel down to yo on first row above 1x1 rib, [p1-tbl] twice, slm, work to end. BO all sts.

SLEEVES

CO 21 (22, 23, 25) sts, pm, CO 5 sts, pm, CO 21 (22, 23, 25) sts [47 (49, 51, 55) sts]. **Row 1 (RS)** K1, *P1, K1; rep from * across. **Rows 2-4:** Knit the knit sts and purl the purl sts as they face you for 1x1 rib.

Establish Pattern

Row 1 (RS): Knit across to m, slm, [P1-tbl] twice, YO, sl 1, P1, pssol, P1-tbl, knit to end. **Row 2:** Purl across to m, slm, K2, P1, K2, slm, purl to end. **Row 3:** Work in St st to m, slm, [P1-tbl] twice, K1, [P1-tbl] twice, knit to end. **Row 4:** Work in St st to m, slm, K2, P1,

K2, work in St st to end. Rep Rows 3 and 4 for patt for rem of piece.

Shape Sleeve

Next Row: (RS) K5, M1, patt to last 5 sts, M1, K5 [2 sts inc'd]. Work 11 rows even in patt. Rep last 12 rows 4 times, working inc'd sts in St st [57 (59, 61, 65) sts]. Work even until piece meas $9\frac{1}{2}$ " from CO, end after WSR.

Shape Sleeve Cap

Next row (RS): Dec 1 st each side EOR 21 (21, 21, 23) times, as foll: K3, ssk, patt to last 5 sts; K2tog, K3; end after RSR [15 (17, 19, 19) sts rem]. **Next row (WS):** Work across to m, slm, K2, drop next st and unravel down to yo on first row above 1x1 rib, K2, slm, work to end. BO rem sts.

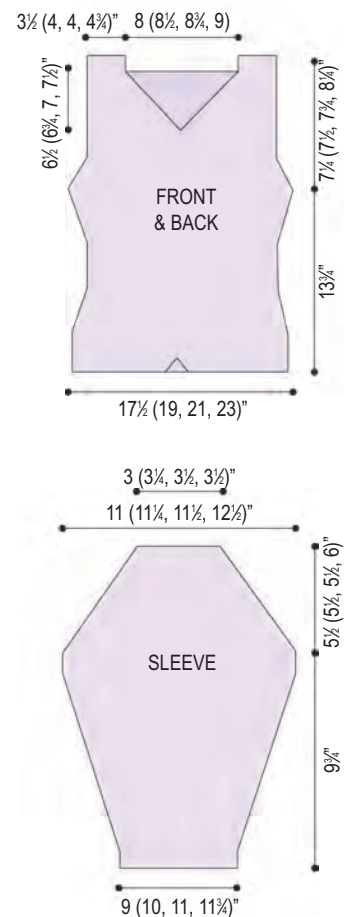
FINISHING

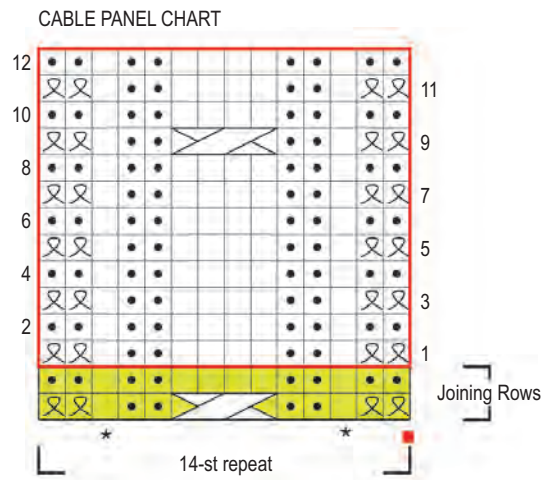
Block pieces to measurements, steaming lightly.

Assembly

Set in Sleeves; sew side and Sleeve seams. Weave in ends.

Charts for this Project is on page 3.





KEY

- = K on RS, P on WS
- = P on RS, K on WS
- = YO
- = Sl 1 kwise, P1, pss0
- = Twisted St
- = C4B
- = pattern repeat
- = sts to be dropped after piece is completed
- = marker

