

R O W A N

Snowflake Hottie

by Martin Storey



YARN

Rowan Classic Extra Fine Merino DK

A Cream 878	3	x 50gm
B Flannel 879	1	x 50gm
C Cloud 881	1	x 50gm

NEEDLES

1 pair 3¼mm (no 10) (US 3) needles
1 pair 4mm (no 8) (US 6) needles

BUTTONS – 3 x 00318

TENSION

22 sts and 30 rows to 10 cm measured over st st using 4mm (US 6) needles.

FINISHED SIZE

Completed hottie fits an average size hot water bottle.

FRONT

Using 4mm (US 6) needles and yarn A cast on 35 sts.

Beg with a K row, work in st st throughout as follows:

Work 1 row, ending with WS facing for next row.

Inc 1 st at each end of next 8 rows. 51 sts.**

Cont straight for a further 42 rows, ending with WS facing for next row.

Next row (WS): P8, (M1, P7) 5 times, M1, P8. 57 sts.

Using the **fairisle** technique as described on the information page, now work in patt from chart, which is worked entirely in st st beg with a K row, for 19 rows, ending with WS facing for next row.

Break off contrasts and cont using yarn A **only**.

Next row (WS): P7, (P2tog, P6) 5 times, P2tog, P8. 51 sts.

Beg with a K row, work in st st for 5 rows, ending with WS facing for next row.

***Dec 1 st at each end of next 5 rows, ending with RS facing for

next row. 41 sts.

Cast off 3 sts at beg of next 6 rows, ending with RS facing for next row.

Cast off rem 23 sts.

LOWER BACK

Work as given for front to **.

Cont straight for a further 41 rows, ending with RS facing for next row.

Change to 3¼mm (US 3) needles.

Next row (RS): P3, *K3, P3, rep from * to end.

Next row: K3, *P3, K3, rep from * to end.

These 2 rows form rib.

Work in rib for a further 6 rows, ending with RS facing for next row.

Cast off in rib.

UPPER BACK

Using 3¼mm (US 3) needles cast on 51 sts.

Work in rib as given for lower back for 4 rows, ending with RS facing for next row.

Row 5 (RS): Rib 6, (P2tog, yrn, rib 16) twice, P2tog, yrn, rib 7.

Work in rib for a further 3 rows.

Change to 4mm (US 6) needles.

Beg with a K row, work in st st throughout as follows:

Work 19 rows, ending with WS facing for next row.

Complete as given for front from ***.

MAKING UP

Press.

Join left “shoulder” seam using back stitch, or mattress stitch if preferred.

Top cuff

With RS facing, using 3¼mm (US 3) needles and yarn A, pick up and knit 23 sts from cast-off edge of upper back, then 23 sts from cast-off edge of front. 46 sts.

Row 1 (WS): K2, *P2, K2, rep from * to end.

Row 2: P2, *K2, P2, rep from * to end.

These 2 rows form rib.

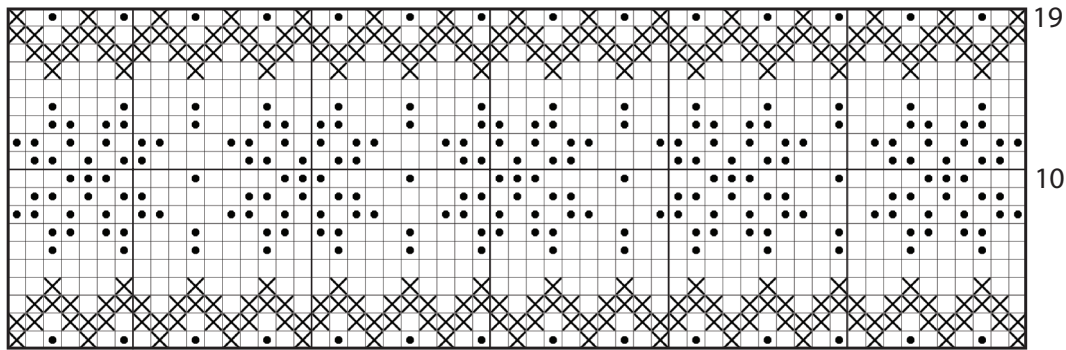
Cont in rib until top cuff meas 8 cm from pick-up row.

Change to 4mm (US 6) needles.

Cont in rib until top cuff meas 16 cm from pick-up row, ending with RS facing for next row.

Cast off in rib.

Lay upper back over lower back so that rib sections overlap. Join back sections to front along entire outer edges, leaving cast-off edges of top cuff open and reversing cuff seam for last 9 cm. Sew on buttons.



Key

- K on RS, P on WS in A
- K on RS, P on WS in B
- K on RS, P on WS in C