

R O W A N



Union Jack Dress

by Grace Melville



SIZE

	8	10	12	14	16	
To fit bust						
	81	86	91	97	102	cm
	32	34	36	38	40	in

length:

	78	78	78	81	81	cm
	30½	30½	30½	32	32	in

width (at underarm):

	41.5	43	45	47.5	51.5	cm
	16½	17	17½	18½	20½	in

sleeve seam:

	23	23	24	24	25	cm
	9	9	9½	9½	10	in

YARN

Rowan British Sheep Breeds DK

A Mid Br'n B'faced Leic 782						
	7	7	7	8	8	x 50gm
B Brown B'faced Leic 781						
	1	1	1	1	1	x 50gm
C B'faced Leic Marl 783						
	1	1	1	2	2	x 50gm
B B'faced Leic 780						
	1	1	1	2	2	x 50gm

NEEDLES

1 pair 3¼mm (no 10) (US 3) needles
1 pair 4mm (no 8) (US 6) needles

TENSION

22 sts and 30 rows to 10 cm measured over st st using 4mm (US 6) needles.

BACK

Using 4mm (US 6) needles and yarn A cast on 107 [111: 115: 121: 129] sts.

Row 1 (RS): K1, *P1, K1, rep from * to end.

Row 2: As row 1.

These 2 rows form moss st.

Cont in moss st for a further 14 rows, ending with RS facing for next row.

Beg with a K row, cont in st st, dec 1 st at each end of 17th and 2 foll 10th rows, then on 3 foll 8th rows, then on 3 foll 6th rows, then on 3 foll 4th rows. 83 [87: 91: 97: 105] sts.

Cont straight until back meas 40 [40: 39: 42: 42] cm, ending with RS facing for next row.

Inc 1 st at each end of next and foll 12th row. 87 [91: 95: 101: 109] sts.

Work 3 [3: 7: 7: 9] rows, ending with RS facing for next row.

Beg and ending rows as indicated, using the **intarsia** technique as described on the information page, now work in patt from chart, which is worked entirely in st st beg with a K row, as folls:

Inc 1 st at each end of 9th [9th: 5th: 5th: 3rd] and foll 12th row. 91 [95: 99: 105: 113] sts.

Work 11 rows, ending after chart row 32 [32: 28: 28: 26] and with RS facing for next row. (Back should meas 56 [56: 55: 58: 57] cm.)

Shape armholes

Keeping patt correct, cast off 3 [4: 4: 5: 5] sts at beg of next 2 rows. 85 [87: 91: 95: 103] sts.

Dec 1 st at each end of next 5 [5: 5: 5: 7] rows, then on foll

2 [2: 3: 3: 4] alt rows. 71 [73: 75: 79: 81] sts.

Cont straight until chart row 92 has been completed, ending with RS facing for next row. (Armhole should meas 20 [20: 21: 21: 22] cm.)

Shape shoulders and back neck

Cast off 5 [6: 6: 7: 7] sts at beg of next 2 rows. 61 [61: 63: 65: 67] sts.

Next row (RS): Cast off 5 [6: 6: 7: 7] sts, patt until there are 9 [8: 9: 9: 9] sts on right needle and turn, leaving rem sts on a holder.

Work each side of neck separately.

Cast off 3 sts at beg of next row.

Cast off rem 6 [5: 6: 6: 6] sts.

With RS facing, rejoin yarns to rem sts, cast off centre 33 [33: 33: 33: 35] sts, patt to end.

Complete to match first side, reversing shapings.

FRONT

Work as given for back until 30 [30: 30: 32: 32] rows less have been worked than on back to beg of shoulder shaping, ending after chart row 62 [62: 62: 60: 60] and with RS facing for next row.

(**Note:** Front neck shaping is **NOT** shown on chart.)

Shape front neck

Next row (RS): Patt 28 [29: 30: 33: 33] sts and turn, leaving rem sts on a holder.

Work each side of neck separately.

Keeping patt correct, dec 1 st at neck edge of next 6 rows, then on foll 4 [4: 4: 5: 5] alt rows, then on foll 4th row, then on foll 6th row. 16 [17: 18: 20: 20] sts.

Work 5 rows, ending after chart row 92 and with RS facing for next row.

Shape shoulder

Cast off 5 [6: 6: 7: 7] sts at beg of next and foll alt row.

Work 1 row.

Cast off rem 6 [5: 6: 6: 6] sts.

With RS facing, rejoin yarns to rem sts, cast off centre 15 [15: 15: 13: 15] sts, patt to end.

Complete to match first side, reversing shapings.

SLEEVEHEAD STRIPE SEQUENCE

Using yarn A, work 2 [2: 6: 6: 8] rows.

Using yarn D, work 5 rows.

Using yarn A, work 9 rows.

Using yarn D, work 5 rows.

Using yarn A, complete sleevehead.

SLEEVES

Using 3¼mm (US 3) needles and yarn A cast on 57 [59: 61: 63: 65] sts.

Work in moss st as given for back for 8 rows, ending with RS facing for next row.

Change to 4mm (US 6) needles.

Beg with a K row, cont in st st, shaping sides by inc 1 st at each end of 3rd and every foll 4th row to 77 [79: 79: 81: 79] sts, then on every foll 6th row until there are 81 [83: 85: 87: 89] sts.

Cont straight until sleeve meas 23 [23: 24: 24: 25] cm, ending with RS facing for next row.

Shape top

Cast off 3 [4: 4: 5: 5] sts at beg of next 2 rows. 75 [75: 77: 77: 79] sts.

Beg with first row of sleevehead stripe sequence (see above), cont in st st in stripes as folls:

Dec 1 st at each end of next 5 rows, then on foll 4 alt rows, then on 2 foll 4th rows. 53 [53: 55: 55: 57] sts.

Work 1 row.

Dec 1 st at each end of next and every foll alt row to 41 sts, then on foll 7 rows, ending with RS facing for next row. 27 sts.

Cast off 4 sts at beg of next 2 rows.

Cast off rem 19 sts.

MAKING UP

Press as described on the information page.

Join right shoulder seam using back stitch, or mattress stitch if preferred.

Neckband

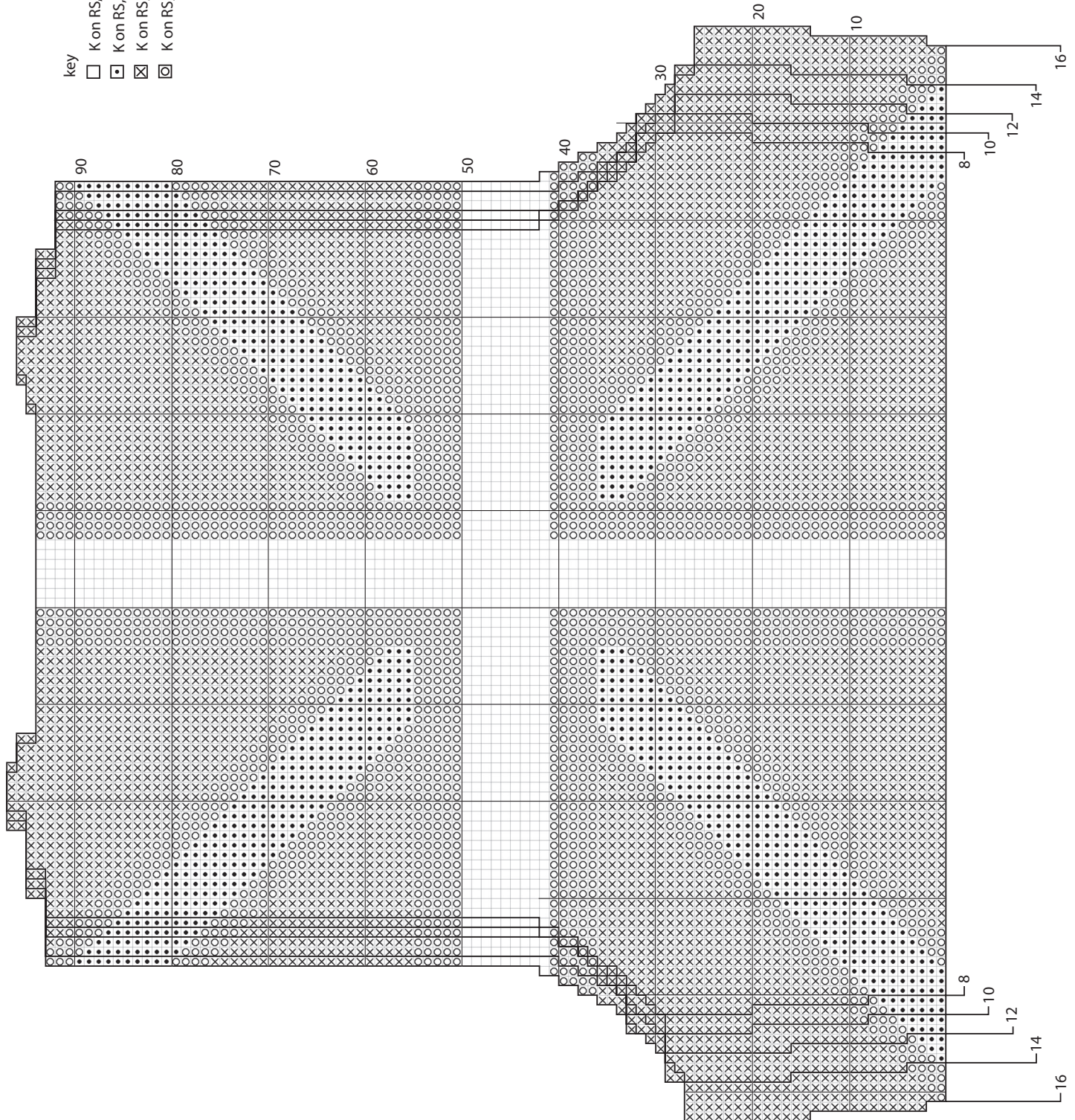
With RS facing, using 3¼mm (US 3) needles and yarn A, pick up and knit 30 [30: 30: 32: 32] sts down left side of neck, 15 [15: 15: 13: 15] sts from front, 30 [30: 30: 32: 32] sts up right side of neck, then 40 [40: 40: 40: 42] sts from back. 115 [115: 115: 117: 121] sts.

Work in moss st as given for back for 7 rows, ending with RS facing for next row.

Cast off in moss st.

See information page for finishing instructions, setting in sleeves using the set-in method.

- key
- K on RS, P on WS using yarn A
 - ◼ K on RS, P on WS using yarn B
 - ⊗ K on RS, P on WS using yarn C
 - ⊙ K on RS, P on WS using yarn D



All right reserved. Reproduction in whole or any part of all material, including illustrations, in this brochure is strictly forbidden. No part may be reproduced, stored in a retrieval system, or transmitted in any form or by any means electronic, electrostatic, magnetic tape, mechanical, photocopying, recording or otherwise without prior permission of the copyright owners having been given in writing. The designs in this brochure are copyrighted and must not be knitted for re-sale. Reproduction of this publication is protected by copyright and is sold on the condition that it is used for non-commercial purposes. Yarn quantities are approximate as they are based on average requirements. Colour reproduction is as close as printing will allow.

First published in Great Britain in 2010 by Rowan Yarns Ltd, Green Lane Mill, Holmfirth, West Yorkshire, England, HD9 2DX. Internet: www.knitrowan.com Email: mail@knitrowan.com © Copyright Rowan 2010

