

Pretreatment Information Management System



Industrial pretreatment program knowledge, regulatory affairs know-how and experience differentiate IPS staff and software from any other software solution available.

PIMS began development in 1989 and has evolved as regulations grew and technology matured. Throughout this time, the IPS solution has maintained its position as the most comprehensive single piece of software for pretreatment information management available.

PIMS was developed to meet an existing client's needs and now serves the needs of many wastewater clients with industrial pretreatment programs across the United States. The system is highly configurable to meet most existing business processes and all local ordinance and Federal Categorical EPA requirements.

PRODUCT HIGHLIGHTS

GENERAL INFORMATION

Permit application, classification, document management, IU inventory

SAMPLE POINTS

Pretreatment/discharge limits, meter tracking

METERING/WATER BALANCE

IU meter tracking, influent and effluent water calculations

MONITORING

SMR requirements, IPP inspection and monitoring requirements, templates

PERMITS

Multiple permit types, auto generation to MS Word, electronic record keeping

SCHEDULING

SMR dates, crew schedules, LIMS Interface, COC

RESULTS

Inspections, lab, SMR data, limits, calcs, TRC + Chronic

COMPLIANCE

Auto violations, SNC status and reporting, NOV's generation to MS Word

ENFORCEMENT

Tiered enforcement response, violations linking, cost tracking

WASTE HAULERS

Permitting, inspections, sampling, billing

EVENTS/TRACKING

Event driven data collection and activities tracking

SURCHARGE

Loadings, flow calcs, billing

WEB SMR

IU SMR web submittal, remote laboratory web submittal, IU data portals

LOADINGS/LIMITS MODEL

By parameter and each WWTP

AD-HOC REPORTING

Easy to use and save

REGULATORY REPORTING

IPP – Annual, WWTP – DMR

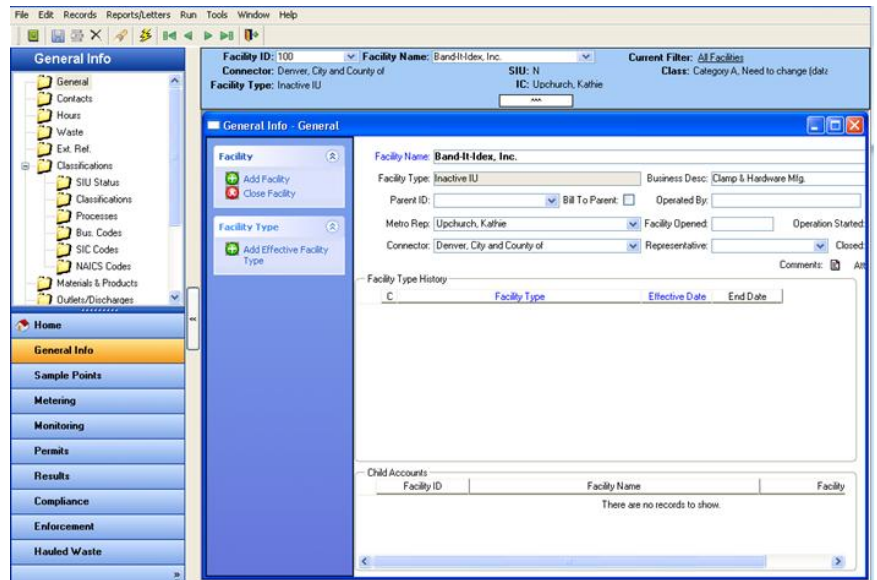
INDUSTRIAL SURVEY

Monitoring and tracking capabilities for facilities not included in WWTP's formal pretreatment program

NOTIFICATIONS

Event driven alert system capable of sending email notifications based on PIMS

Common interfaces to PIMS include LIMS, GIS, billing, water accounts, hand-held (HH) field devices and plant operations systems. In most cases, these bi-directional interfaces provide non-redundant instantaneous access to external systems. By using a common Electronic Data Interface (EDI), external systems can easily be interfaced to PIMS. IPS maintains a library of more than 300 unique reports for existing clients, securely available through the application, through an external reporting tool, or through internet/intranet reporting tools. Competing software vendors have come and gone and are often born out of a packaged, one size fits all approach: "shipping a product makes money."



IPS' consistently successful approach is unique by comparison. We are dedicated to meeting each client's exact requirements. IPS has developed a core application which we offer as a Commercial Off-The-Shelf (COTS) solution to POTWs who are looking for a system that fully complies with EPA requirements. For those clients that require more robust features or increased functionality, IPS has developed solutions that can be added to your application without affecting on-going support or upgrades to the core functionality. These other features include: web based modules for permit applications and self monitoring reports, Industrial Survey, and custom based reports and documents.

Key differentiating features:

- Linked requirements, scheduling, permitting and compliance modules.
- Dynamic, queryable inspection forms (create any form you can imagine).
- Instantaneous SNC forecasting (know your status from the first day of any compliance period).
- Over 80% of system settings are configurable to meet unique requirements.
- Auto-flagging for notification of past due events, violations or reports.
- Proper Chain of Custody and bar-coding is maintained completely through PIMS, LIMS and HH interface process.
- Username, password and PIN (digital signature) over Secure Sockets Layer to maintain unaltered electronic reporting from Industrial Users.
- No additional software installation needed for remote Industrial User access or external Laboratory access.
- Rich-text editing
- Online image mapping
- Auto-referencing utility
- Table of Contents editor
- Template editor
- XML-based import/export tool

