

# Staggered Cable Throw

by Martin Storey



## FINISH SIZE

Finished Throw measures approx 140 cm x 180 cm [excluding fringe]

## YARN

**British Sheep Breeds Chunky**

Steel Grey Suffolk 954 28 x100gm

## NEEDLES

1 pair 7 mm needles  
1 cable needle

## TENSION

18 sts x 18 rows = 10 cm measured over patt using 7 mm needles

## Special Abbreviations

**c4r** = slip next st onto a cable needle and hold at back of work, k3, then p1 from cable needle

**c4l** = slip next 3 sts onto a cable needle and hold at front of work, p1, then k3 from cable needle

**c5r** = slip next 2 sts onto a cable needle and hold at back of work, k3, then p2 from cable needle

**c5l** = slip next 3 sts onto a cable needle and hold at front of work, p2, then k3 from cable needle

**c6b[f]** = slip next 3 sts on to a cable needle and hold in back [front] of work, k3 then k3 from cable needle.

## NOTES

\* 1] **Note for Knitters** – Please check your tension before commencing pattern. Use larger or smaller needles in order to achieve correct tension.

\* 2] **Note for Knitters** – Cast on using the thumb method throughout pattern.

## THROW

**SIDE PANELS – MAKE 2**

Using 7 mm needles cast on 112 sts

**Foundation Row [WS]** – [k4, p6, k4, p6, k4, p3, k4, p6, k4, p3] twice, k4, p6, k4, p6, k4

Cont to work from Side Panels chart beg at bottom right hand

corner [1st row is RS of work] as folls:-

**Chart row 1 [RS]** – [p4, k6, p4, k6, p4, k3, p4, c6b, p4, k3] twice, p4, k6, p4, k6, p4

**Chart row 2** – [k4, p6, k4, p6, k4, p3, k4, p6, k4, p3] twice, k4, p6, k4, p6, k4

**Chart row 3** – [p4, c6b, p4, c6b, p4, k3, p4, k6, p4, k3] twice, p4, c6b, p4, c6b, p4

**Chart row 4** – as Row 2

These 4 rows set the position of sts.

Cont to work sts as set out on chart to row 48

Cont now to rep these 48 rows until work measures 180 cm, ending with RS facing for next row.

Cast-off

Make one more panel exactly the same.

## CENTRAL PANEL

Using 7 mm needles cast on 30 sts

Cont to work from Central Panel chart beg at bottom right hand corner [1st row is RS of work] as folls:-

**Chart row 1 [RS]** – p2, [k6, p4] twice, k6, p2

**Chart row 2** – k2, [p6, k4] twice, p6, k2

**Chart row 3** – p2, [c6b, p4] twice, c6b, p2

**Chart row 4** – as Row 2

These 4 rows set the position of sts.

Cont to work sts as set out on chart to row 28

Cont now to rep these 28 rows until work measures 180 cm, ending with RS facing for next row;-

Cast-off

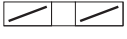
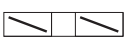


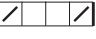
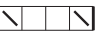
## MAKE UP

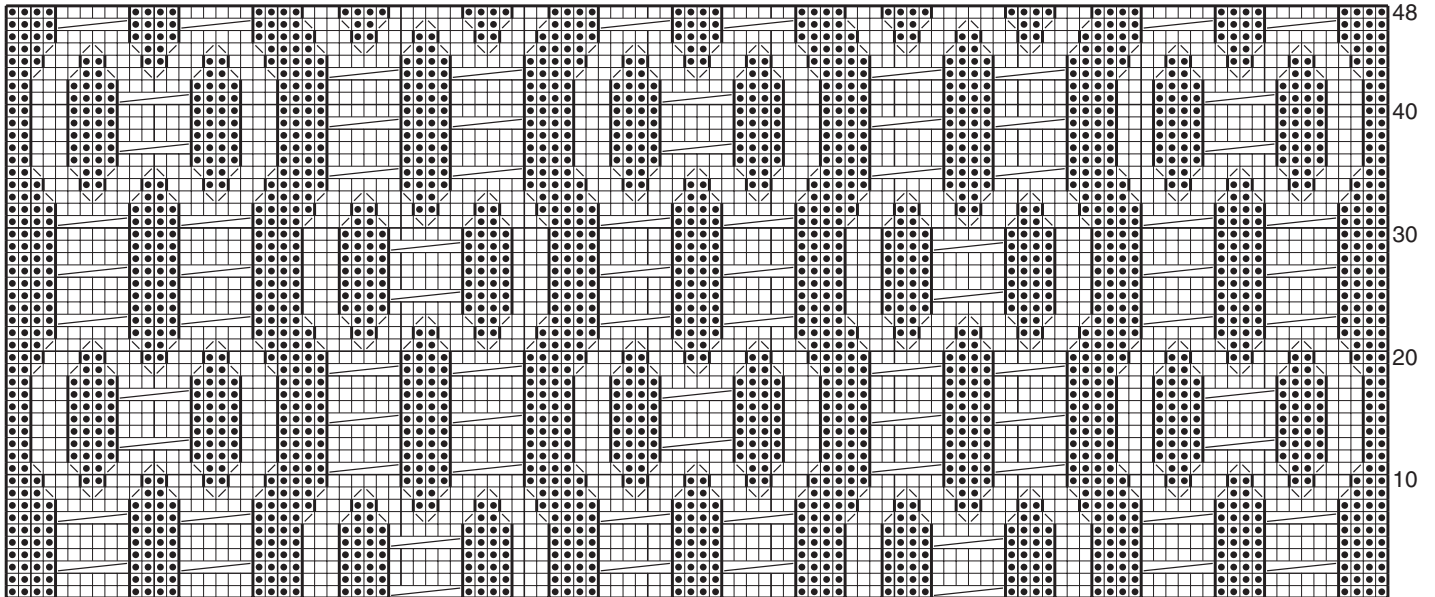
Join neatly the row-ends of central panel to row-ends of both side panels to form one large rectangle.

## FRINGES

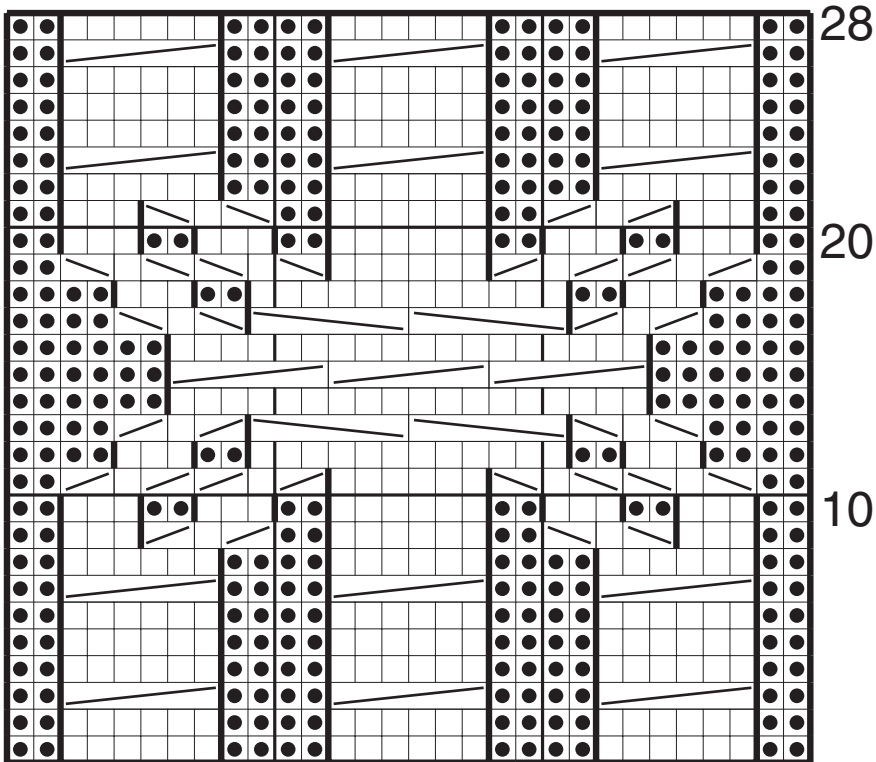
Cut 30 cm lengths of yarn and knot groups of 3 of these lengths through every other st across cast-on and cast-off edges of throw to form fringe. Trim evenly.

# KEY

- |   |                |   |     |
|---|----------------|---|-----|
| □ | RS, K<br>WS, P |  | c5r |
|   |                |  | c5l |
| ● | RS, P<br>WS, K |  | c6b |
|   |                |  | c6f |
|   |                |  | c4r |
|   |                |  | c4l |



SIDE PANEL



CENTRAL PANEL