

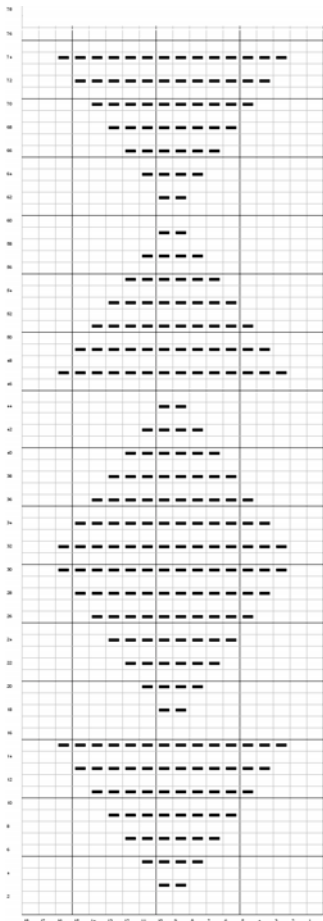
# Azalea Scarf

**Finished Measurements:**  
5" wide X 60" long.

**Materials:**  
4 hanks Delicious Azalea  
Size 10 1/2 (6.5mm) needles

**Notes:**  
Pattern is worked holding 2  
strands together.

**Pattern:**  
Holding two strands together,  
Cast on 18 sts.  
Begin Diamond pattern from  
chart.  
Work until piece measures 60".  
(Three repeats of the pattern.)  
Cast off.



Diamond Pattern

K stitch □  
Purl stitch –



© This design may not be reproduced in any  
manner without the expressed written  
consent of Kollage Yarns.

