

Brisbane's Birds.

Brisbane is home to around 400 species of birds. Some are here for only part of the year.

The birds are here because of our sub-tropical climate and the variety of habitats which include beaches, mud flat, sand bank, foreshore, mangrove, salt marsh, bushland, urban park, playing field and the extensive vegetation in thousands of private gardens.

Walking in any park, along a track, a bikeway, an urban street, a bush land area or beside a creek will reveal a surprising number of birds.

Pressure for housing and development is causing bird habitat to disappear. Small bush birds are particularly vulnerable.

Brisbane City Council is actively retaining natural areas, rehabilitating degraded ones and maintaining native vegetation along creeks and corridors.

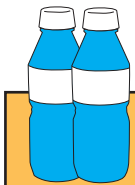
Watching birds is an enjoyable and rewarding pastime. Binoculars make birdwatching easier.

Birds Queensland's brochure "What's That Bird?"

has a short bird list with illustrations.

This brochure suggests some of the many places worth visiting.

Field Guides have more information on native birds. See www.birdsqueensland.org.au for suggestions for Field Guides and a Brisbane Bird List.



**Always carry water and wear a hat.
Use sun-screen and insect repellent**



Early morning is the best time to see birds.



Birds Queensland is a non-profit organization, which promotes the appreciation, conservation and scientific study of birds.

Activities include:

- Monthly meetings with interesting speakers.
- Bird identification classes.
- Walks and camps to see and enjoy birds.
- Raising funds for scientific bird research.
- Publishing a monthly newsletter and a scientific journal.
- Collecting data on bird distribution.
- Working with local authorities to conserve habitat.

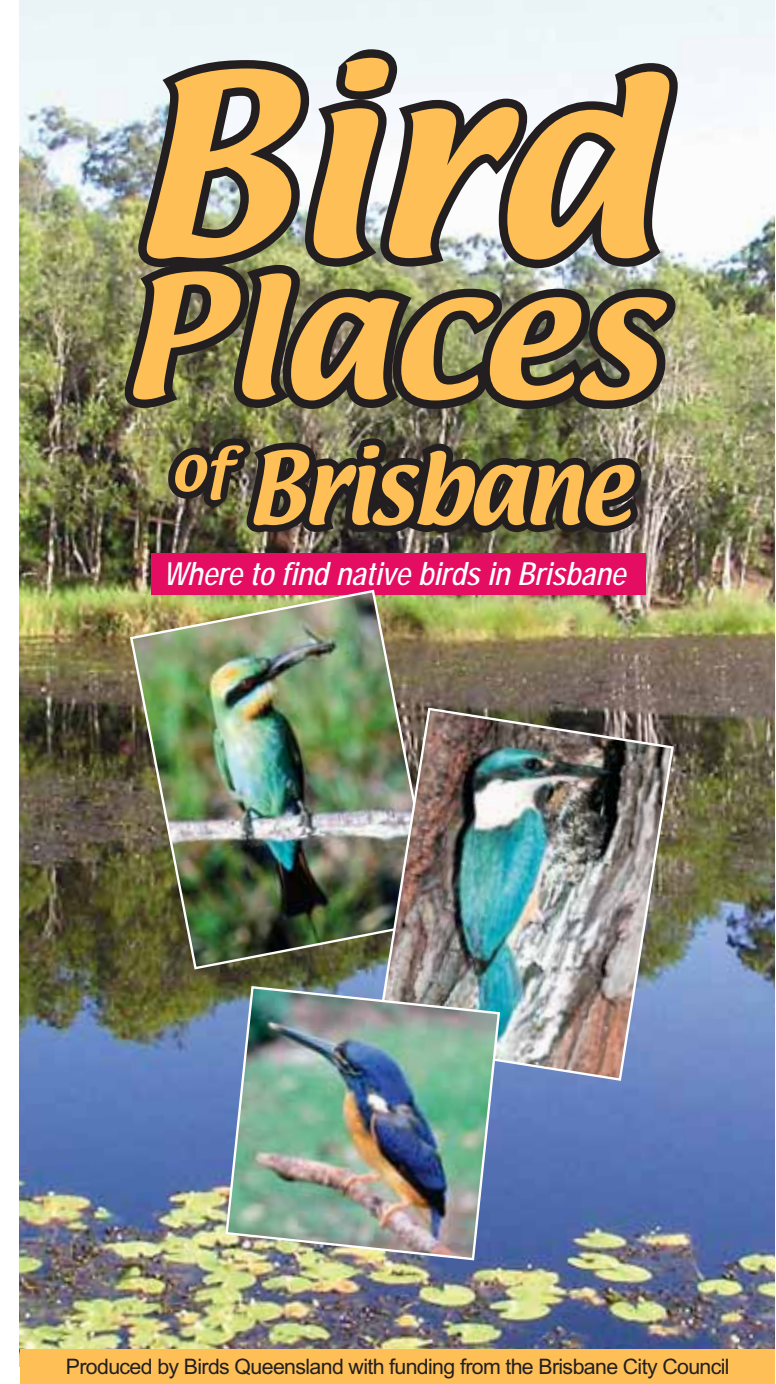
**These activities are open to all members.
Non-members are also welcome.**

Birds Queensland meets
on the first Thursday of each month
(except January) starting 7:40 pm
at the
Royal Geographical Society Building
237 Milton Road, Milton
(Opposite the railway station)

For more information about
Birds Queensland contact
The Secretary, Birds Queensland
PO Box 2273, Milton Qld 4064.
Visit Birds Queensland's web site
www.birdsqueensland.org.au



Birds Queensland is the registered trading name of the
Queensland Ornithological Society Incorporated. ABN 43 891 564 740.
Photographs Birds Queensland Library, Valdamay Jones, Linda Sulakatku and others.



Produced by Birds Queensland with funding from the Brisbane City Council



Dedicated to a better Brisbane

INNER CITY:

1. City Botanical Gardens

Rating: ★★

Alice St, City. UBD 4.

The gardens are accessible from many points. Water, picnic places, some sealed walkways. Grassed areas, trees, gardens. Best birding in the early morning.

2. Roma Street Parkland

Rating: ★★★★★

Albert St, Brisbane. UBD 1.

Easy walking distance from city train and bus stations. Parking, water, picnic places, coffee shop, well made tracks, board-walks. Fairy Martin, Buff-banded Rail, Bush Stone-Curlew, Superb Fairy-Wren. See map available from the Parkland Office. (34).

NORTH.

3. Kedron Brook Wetlands Bikeway

Rating: ★★

Hedley Ave. UBD 140 Q4.

Bus to Toombul Shopping Centre. Toilets Hedley Ave. Flat sealed track. 5km to Nudgee Rd and Nudgee Beach. Salt-marsh, grassland, mangroves. Black-shouldered Kite, Swamp Harrier, Black-winged Stilt, Ducks. See Bicycle Experience Guide. (41)

4. Boondall Wetlands

Rating: ★★★★★

Bicentennial Way & Gateway Mway Roundabout. Boondall. UBD 111 C14. Train to Boondall station. 2km walk. Parking, water, toilets, visitor centre, picnic tables, shelters. Formed walking tracks, bird hide. Tawny Frogmouth, Rainbow Bee-eater, Osprey, Whistling Kite, Mangrove Gerygone, Leaden Flycatcher. See BCC Boondall Wetlands track map and Birds of Boondall Brochure, both available at the Centre. (48).

5. Nudgee Beach Boardwalk

Rating: ★★★★★

O'Quinn St Nudgee Beach. UBD 111 L15. (Part of Boondall Wetlands). BCC Bus 306. Parking, toilets, water, picnic tables, shelters. Formed tracks, boardwalk, hide. Collared Kingfisher, Mangrove Honeyeater, Brahminy Kite. Rainbow Bee-eaters breed here. See BCC Boondall Wetlands track map. (24).

6. Nudgee Waterhole Reserve

Rating: ★★

Nudgee Road. UBD 121 K9.

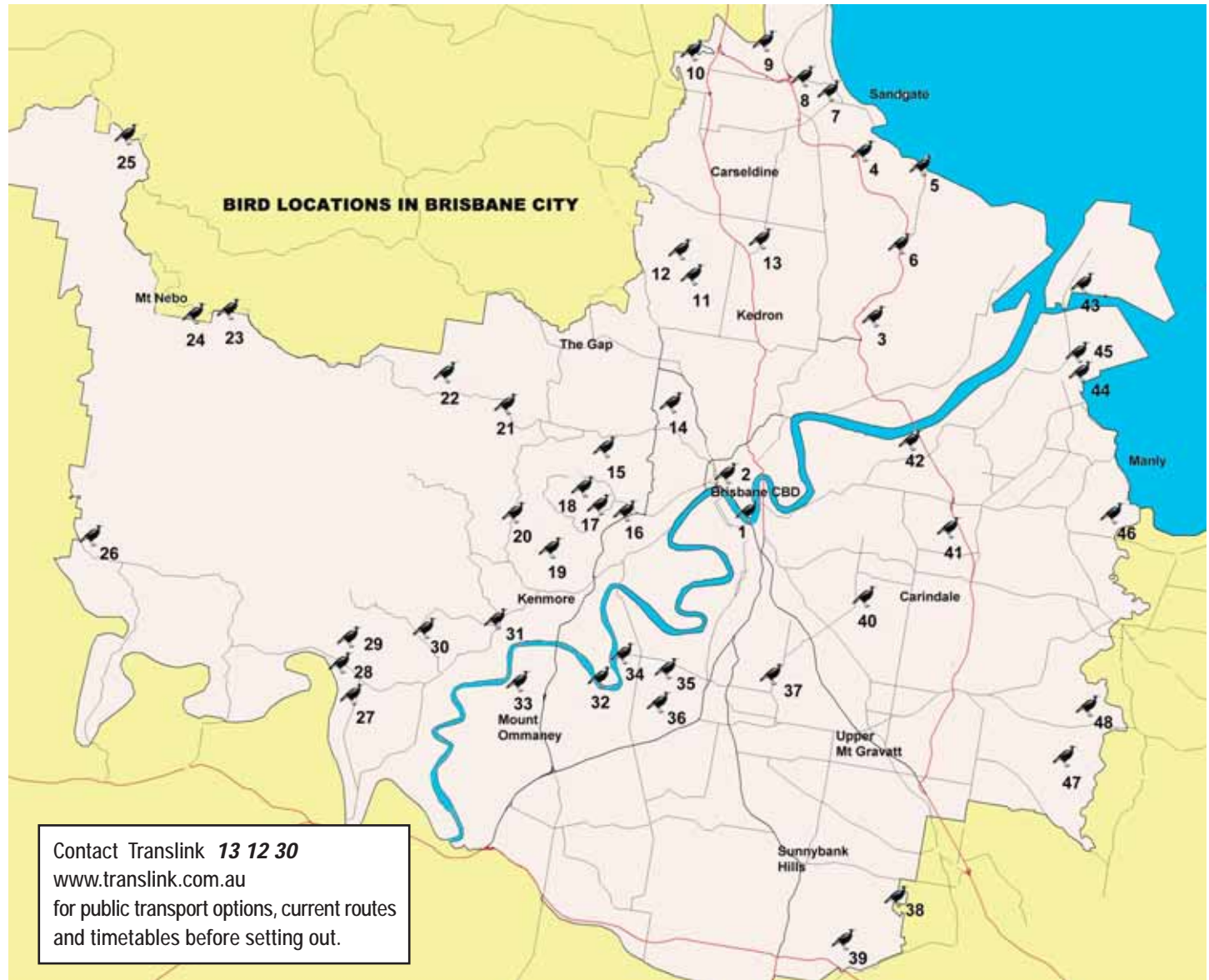
Parking, boardwalk. Australasian Grebe, Figbird, Pacific Black Duck. (23).

7. Dowse Lagoon

Rating: ★★

Keogh St, Sandgate. UBD 110 N4.


Parking. Sealed walking track. Surrounded by roads, buildings. Urban & water birds. (32).



Ratings ★★★★★ Best birding.
 ★★★ Less variety.
 ★ Mostly common birds.

The number in brackets (34) indicates birds seen on a recent two to three hour visit.

 Indicates some parts are suitable for mobility-impaired people.

 Brisbane City Council Track Maps and Bird Lists are available at the Downfall Creek (Raven St Reserve) and Boondall Environmental Centres, Council Business Offices and some Council Libraries. Council publishes a Mobility Map and has other disability information available. Council publishes the Brisbane Bicycle Experience Guide with maps showing cycle ways around Brisbane.

For more information call Council on 3403 8888.

8. Third Lagoon

Rating: ★★

Baskerville St, Nashville. UBD 100 J20.

Street parking, water, toilets, picnic table, shelter. Sealed walking track. Formed track to hide. Urban & water birds. (35).

9. Tinchy Tamba Wetlands

Rating: ★★★★★

Wyampa Rd, Bracken Ridge. UBD 100 A16.

BCC Bus 438/327, 2km walk. Parking, toilets, water, picnic tables, shelters. Formed tracks, boardwalk, hide. Mangrove Gerygone, Whistling Kite, Terns, Mistletoebird, Striated Heron, Brolgas sometimes north of access road. See BCC Tinchy Tamba track map. (51).

10. Canterbury Park & Barungwarra Bushland Rating: ★★

Feuerriegel Rd, Bald Hills. UBD 99 G19.

Parking, water, picnic tables. Level sealed tracks. Grassland, playing fields, open forest. Adjacent to Pine River. Buff-banded Rail, four egret species, Pale-headed Rosella. (54).

11. Raven Street Reserve

Rating: ★★

Rode Road, Chermside West. UBD 119 F16. (Downfall Creek Bushland Centre). BCC Bus 352/3/5. Parking, water, toilets, visitor centre, picnic tables, shelter. Formed tracks, some hilly. Open forest, riparian scrub. Eastern Yellow Robin, Variegated Fairy-wren. See BCC Chermside Hills Reserves track map.

12. Chermside Hills Reserve

Rating: ★★

Trouts Road, Chermside West. UBD 119 D11.

BCC Bus 345. Street parking, water, picnic tables, shelters. Formed tracks, some hilly. Open forest, heath. Pale-headed Rosella, Brown Goshawk, Yellow-tailed Black-Cockatoo. See BCC Chermside Hills Reserves track map. (44).

13. 7th Brigade Park

Rating: ★★

Murphy Rd, Chermside. UBD 120 A10. Parking, water, toilets, picnic tables, shelters. Bush Stone-curlew, Tawny Grassbird, Golden-headed Cisticola, Fairy-wrens, Varied Triller, Clamorous Reed-warbler. (40).

Watching Waders in Brisbane... *Waders (or shorebirds) make up about 10% of Australia's bird species. They migrate to Northern Asia each Australian summer to breed. Tens of thousands visit Moreton Bay each September to April. Both day and night waders spread across the tidal flats at low tide to feed on a wide range of invertebrates.. At high tide, they go to sites along the shoreline to rest. These roosts are the best place to observe them. Waders must increase their body weight greatly to provide energy reserves for their 1,3000km migration. Disturbances by dogs and people prevent them gaining weight.*

WEST.

14. Bank Street Reserve

Rating: ★★

Weatherhead St, Ashgrove. UBD 139 B15.

BCC Bus 355. Open forest, disturbed bushland, revegetated areas on Enoggera Creek. Pheasant Coucal, Azure Kingfisher, Spectacled Monarch, Varied Triller, Olive-backed Oriole. (34)

15. Bowman Park

Rating: ★★

Simpsons Rd, Bardon. UBD 158 L6.

BCC Bus 375. Parking, toilets, water, picnic tables, shelters. Sealed paths, mostly level. Park, bushland along Ithaca Creek. Lorikeets, King Parrot, Pale-headed Rosella, Bush Stone-curlew. Swift Parrots are seen irregularly in winter.

16. Mt Coot-tha Botanical Gardens

Rating: ★★

Mt Coot-tha Rd, Toowong. UBD 158 L13.

BCC Bus 471. Parking, toilets, water, kiosk. Sealed paths. Gardens. Ducks, water birds. Map available at Gardens.

17. J C Slaughter Falls

Rating: ★★

Sir Samuel Griffith Dr, Mt Coot-tha. UBD 158 G13.

Parking, toilets, water, picnic tables. Formed tracks. Open forest, wet forest in gullies. White-throated Treecreeper, Variegated Fairy-wren, Powerful Owl, Rose Robin, Varied Sitella. See BCC Mt Coot-tha Forest track map. (40)

18. Simpson Falls

Rating: ★★

Sir Samuel Griffith Dr, Mt Coot-tha. UBD 158 D10.

Parking, toilets, water, picnic tables. Similar to Slaughter Falls. See BCC Mt Coot-tha Forest track map.

19. Honeyeater Track

Rating: ★★

The Hut, Fleming Rd. Chapel Hill. UBD 177 P2.

BCC Bus 425. Street parking. Formed tracks, some hills. Australian King Parrot, Rufous Whistler, White-throated Nightjar, Pale-headed Rosella. See BCC Mt Coot-tha Forest track map. (29).

20. Gap Creek Reserve

Rating: ★★★★★

Gap Creek Rd. UBD 157 H15.

No public transport. Parking, toilets, water, picnic tables, shelter. Unformed tracks. Extensive area full of surprises. Open forest. Square-tailed Kite, Painted Button-Quail, White-tailed Nightjar, Spotted Quail-thrush, Speckled Warbler. See BCC Mt Coot-tha Forest track map.

Brisbane Forest Park

(21 - 25) is an extensive bushland area to the north-west of Brisbane. Some non-Brisbane areas are included.

21. Auracaria Walk

Rating: ★★★★★

Brisbane Forest Park HQ and Information Centre, Waterworks Rd/Mt Nebo Rd, The Gap. UBD 137 G19. BCC Bus 380/385. Parking, information, toilets. Open forest, lakeside habitats. Formed and unformed track. Comb-crested Jacana, Crested Grebe, Azure & Forest Kingfisher, Peaceful Dove, Scarlet Honeyeater, Topknot Pigeon, Bell Miner, Double-barred Finch. (70)

22. Bellbird Grove

Rating: ★★

off Mt Nebo Rd. UBD 136 Q6.

Parking, toilets, water, picnic tables, shelters. Tawny Frogmouth, White-throated Gerygone, Brown Thornbill, Eastern Whipbird, Spectacled Monarch, Grey Fantail. (47).

23. Jollys Lookout

Rating: ★★★★★

Mt Nebo Rd. UBD 135 N1.

Parking, toilets, water, picnic tables. Formed tracks some steps. Brown Cuckoo-Dove, Eastern Spinebill and other rainforest birds. (32).

24. Boombana National Park

Rating: ★★★★★

Mt Nebo Rd. UBD 135 J1.

Parking, picnic tables, toilets. Formed tracks, some steps. Noisy Pitta, Green Catbird and other rainforest birds. (34).

25. Maijala Recreation Area

Rating: ★★★★★

Mt Glorious Rd, Mt Glorious. UBD 105 C6.

Parking, toilets, water, picnic tables. Formed track. Rainforest. Rainforest birds.

26. Lake Manchester

Rating: ★★★★★

Lake Manchester Rd. UBD 172 Q1.

Parking, toilets, water, picnic tables, shelters. Unformed tracks. Grass, riparian vegetation, lake. Wonga Pigeon. Access road part gravel. (57)

27. Anstead Bushlands

Rating: ★★★★★

Hawkesbury Rd, Anstead. UBD 195 P3.

Parking, water, toilets, picnic tables, shelters. Formed and unformed tracks. Easy walking. Bush, grassland. Brown Quail, Scaly-breasted Lorikeet, Spotted Pardalote, Sacred Kingfisher, Red-browed Finch. (54)

28. Moggill Forest Reserve

Rating: ★★★★★

Chalcot St, Anstead. UBD 175 L20.

Street parking. Unformed tracks, fire trail. Open forest. Brown Goshawk, Brown Cuckoo-Dove, White-throated Treecreeper, White-browed Scrubwren, Eastern Yellow Robin, Grey Fantail. (35)

29. Moggill Forest Reserve Rating: ★★★
Mill Rd off Grandview Rd, Pullenvale. UBD 175 R11.
Street parking. Unformed tracks, fire trails. Open forest, riparian forest.
Wonga Pigeon, Emerald Dove, Rose Robin, Eastern Yellow Robin, Little
Shrike-thrush, Brown Cuckoo-Dove. (42).

30. Pullen Pullen Forest Park Rating: ★★★
Pullenvale Rd, Pullenvale. UBD 176 H14.
Parking, water, picnic tables, shelters. Fire trail, formed and unformed
tracks, boardwalk. Open and riparian forest. Brown Cuckoo-Dove, Eastern
Whipbird, Speckled Warbler, Red-browed Finch, Eastern Yellow Robin.
(38).

31. Rafting Ground Reserve Rating: ★★
Moggill Rd, Kenmore. UBD 177 F14.
BCC Bus 435/436. Parking, water, toilets, picnic tables, shelters. Formed
and unformed tracks. Riparian scrub, extensive parklands. White-throated
Gerygone, Azure Kingfisher, Red-backed Fairy-wren, Australian King
Parrot. (47)

32. Fig Tree Pocket Rating: ★★
Mandalay Park, Fig Tree Pocket Rd. UBD 198 J3.
BCC Bus 430. Parking, water, toilets, picnic table, shelter. Unformed
tracks. Follow the river-bank. Mangroves, parkland. Australian King
Parrot, Mangrove Gerygone, Darter, Double-barred Finch, Rainbow Bee-
eater. (48)

SOUTH.

33. Mt Ommaney Boardwalk Rating: ★★★
Summit Place, Mt Ommaney. UBD 197 G4.
Toilet. Boardwalk, formed tracks, some hills. Open forest, riparian scrub,
river banks. Pacific Baza (summer), Collared Sparrowhawk, Rainbow
Bee-eater, Eastern Whipbird, Varied Triller. (49)

34. Sherwood Forest Park Rating: ★★★
Jolimont St, Sherwood. UBD 178 K19.
Train to Sherwood Station, 600m walk. Parking, toilets, water, picnic
tables, shelters. Some sealed tracks. Lawns, freshwater lagoon, scattered
trees, river banks. Little, Rainbow & Scaly-breasted Lorikeets, White-
breasted Woodswallow, Tree & Fairy Martin, Crakes & Rails, Little Bittern.
(49)

35. Oxley Common Rating: ★★★
Sherwood Rd, Sherwood. UBD 179 B20.
BCC Gt Circle Bus 598 stops at gate. Parking, toilets, water, picnic tables,
shelter. Sealed and formed tracks, mostly flat. Creek, vine, wetland,

grass habitats. Striped Honeyeater, Chestnut-breasted Mannikin, Clamorous
Reed-Warbler, water birds. (48)

36. Cliveden Reserve Rating: ★★
Cliveden Ave, Corinda. UBD 199 A6.
Train to Corinda Station, BCC bus. Street parking. Unformed loop track.
Riparian scrub, grasslands. Common Koel, Sacred Kingfisher, Spangled
Drongo, Black-faced Cuckoo-shrike, Brown Goshawk, White-throated
Honeyeater. (47)

37. Toohey Forest Rating: ★★
Toohey Road, Tarragindi. UBD 200 E1.
Parking, picnic tables. Formed and unformed tracks, some hilly. Open
forest, heath, scrub. Noisy Friarbird, Rose Robin, Grey Fantail, Olive-backed
Oriole, Powerful Owl. See BCC Toohey Forest track map for other access
points.

38. Karrawatha Forest Rating: ★★
Acacia Rd, Karrawatha. UBD 221 J19.
Parking, water, toilets, picnic tables, shelters. Formed and unformed tracks,
some paved. White-throated Tree-creeper, Scaly-breasted Lorikeet, Yellow-
faced Honeyeater, Weebill. See BCC Karrawatha Forest track map. (23)

39. Karrawatha Forest Rating: ★★
Stretton Recreation Reserve, Illaweena St, Drewvale. UBD 240 Q7.
Parking, picnic tables, shelters. Formed and unformed tracks. Casuarina,
melaleuca and eucalypt forest. Black-faced Monarch, Eastern Spinebill,
Grey Fantail. See BCC Karrawatha Forest track map. (39)

EAST.

40. Whites Hill Reserve Rating: ★★
Boundary Rd, Camp Hill. UBD 181 B9.
Parking, toilets, water, picnic tables. Unformed and formed tracks, hilly.
Walk the bushland south of the soccer fields. Open forest, parkland. (35)

41. Minnippi Parklands Rating: ★★★
Stanton Rd West, Tingalpa. UBD 162 B17.
BCC Bus 215/220/222, 1km walk. Parking, water, toilets, picnic tables,
shelters. Easy walk on sealed path around lake. Unformed tracks through
bushland. Freshwater wetland, open forest, grass. Tawny Grassbird,
Golden-headed Cisticola, Fairy-wrens, Mannikin, Black-shouldered Kite,
Grassbirds. (60)

Also: **Bulimba Creek Parklands** Rating: ★
UBD 162, 181, 182, 201. Sealed tracks with some hilly sections. Numerous
access points. Urban birds with some surprises.

42. Metroplex Industrial Estate Rating: ★★
Metroplex Ave, Queensport. UBD 161 M3.
Street parking, water, picnic table, shelter. Sealed track to Brisbane
River. Fresh water swamp, riparian scrub. Breeding White Ibis, Cattle
Egret, Cormorants, Spoonbill. (23)

43. Port of Brisbane Visitor Centre and Lake Rating: ★★
Whimbrel St. UBD 144 G16.
Parking, picnic tables, shelters, coffee shop. Freshwater lake, gardens.
Black Swan, spoonbills, ducks, cormorants, terns.
Also: **Bird Hide**
Lucinda Drive. UBD 144 N9.
Key to the hide is available from the Visitor Centre. Waders, ducks.

44. Wynnum Boardwalk Rating: ★★★
Granada St Wynnum. UBD 143 G14.
Train to Wynnum Station, 2km walk. Parking, water, picnic tables,
shelters. Sealed track and boardwalk. Grass, mangrove habitats. Easy
walk to Lytton Hide. Mangrove Gerygone, Collared Kingfisher, waders
& waterbirds (best at low tide), Osprey, White-bellied Sea-Eagle, White-
throated Treecreeper. See BCC Bayside Parklands track map. (46).

45. Lytton Wader Roost & Hide Rating: ★★★
Wynnum North Road, Wynnum. UBD 143 F11.
High tide roost. Parking, water. Sealed tracks, some slopes. Waders
best in summer. A telescope is helpful. See Wynnum Board-walk.
Eastern Curlew, Black-winged Stilt, Chestnut & Grey Teal, Bar-tailed
Godwit, Brown Quail, Brahminy Kite. See BCC Bayside Parklands track
map.

46. Lota Creek and Boardwalk Rating: ★
Whites Rd, Lota. (Near Arakurta St). UBD 163 N12.
Street parking. Flat sealed track to extensive bush area. Park, mangrove,
bush habitats.

47. Brisbane Koala Bushlands Rating: ★★★
Alperton Rd, Burbank. UBD 203 D16.
Parking, toilets, water, picnic tables, shelters. Sealed tracks, partly hilly.
Fire trail. Open forest. Koalas, Little Lorikeet, Fan-tailed Cuckoo, Rufous
Whistler, White-throated Gerygone, Striated Pardalote. See BCC Brisbane
Koala Bushlands track map. (32)

48. J C Trotter Conservation Park Rating: ★★
Cherbon St, Burbank. UBD 203 K8.
Street Parking. Unformed tracks. Open forest, lake. Little Lorikeet,
Forest Kingfisher, Striated Pardalote, Hardhead, Whistling Kite, Great
Egret. See BCC Brisbane Koala Bushlands track map. (33).