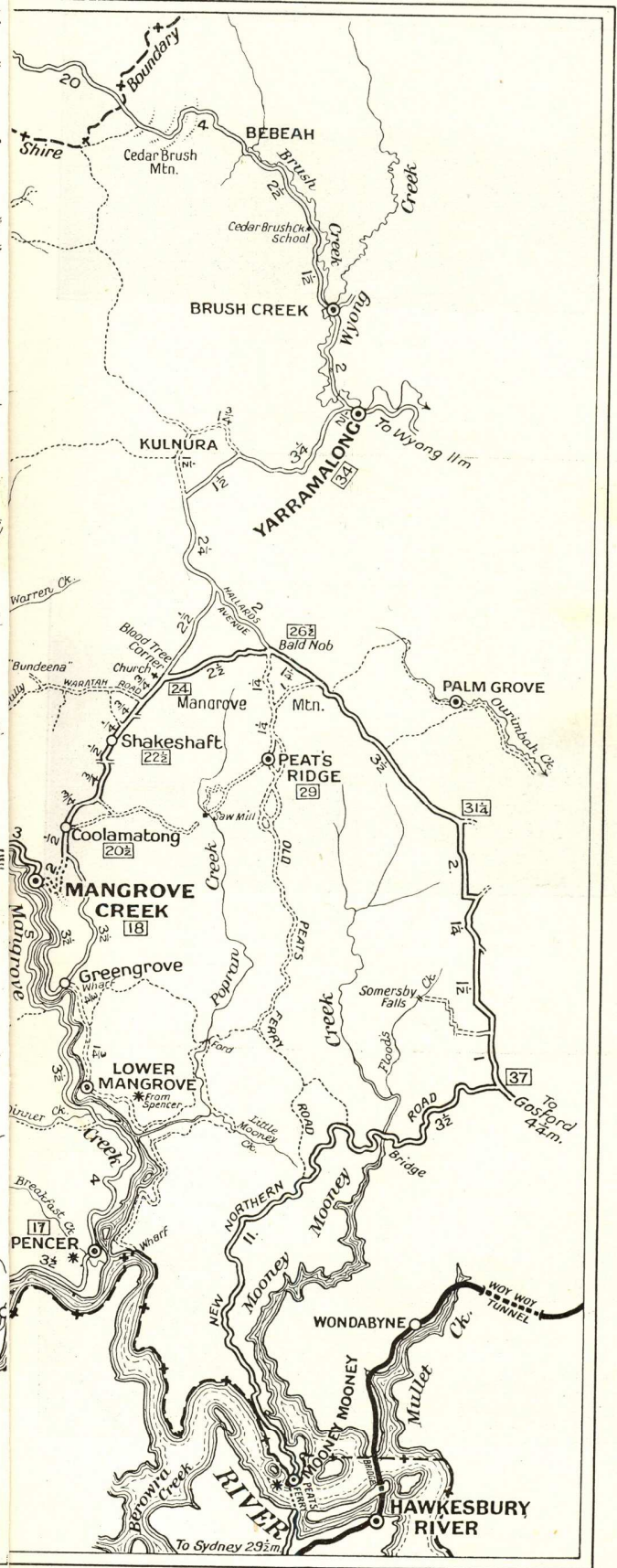
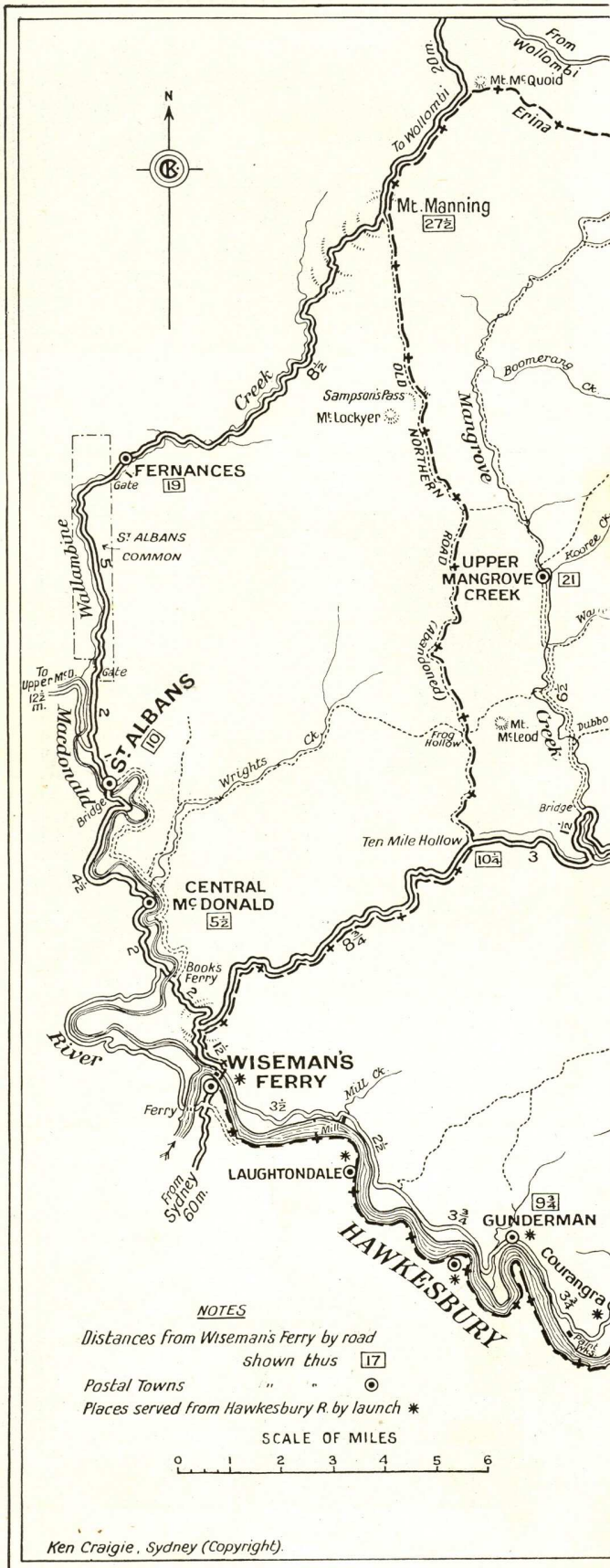
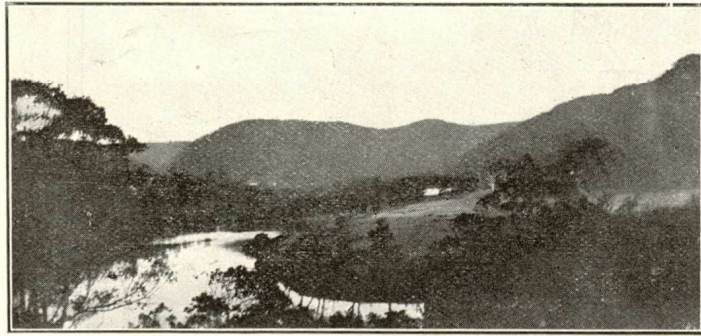
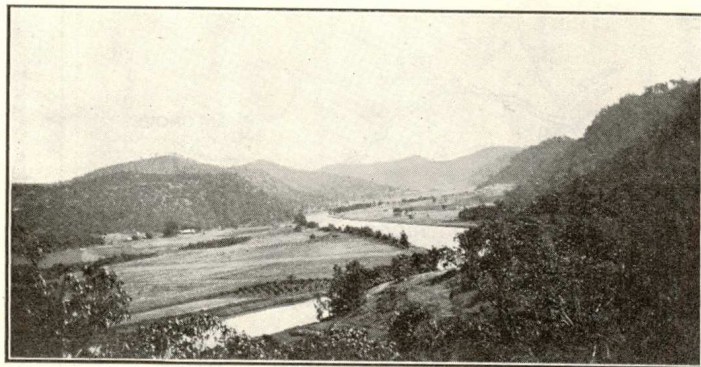


WESTERN DISTRICT MAP

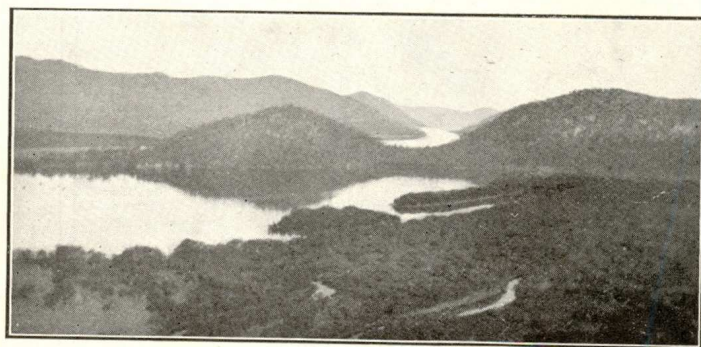




Mangrove Creek.



A view of McDonald River from Ten Mile Hollow.



View from Hills above Spencer, looking down
Hawkesbury River.

WESTERN DISTRICT

MAGNIFICENT RIVERS, MOUNTAINS, FORESTS, ORCHARDS.

The Western area of Erina Shire is divided into several districts, and provides the main entrance by road from the Southern, Western, and part of the North-Western districts of the State. The Great Northern Road, now in process of completion, which crosses the Hawkesbury River at Peat's Ferry, will constitute the main avenue of access. Throughout the whole length of the road there are magnificent views of the Hawkesbury River, Mooney Creek, and Mangrove Creek, together with lovely stretches of natural bush scenery, also abundant wild flowers and ferns.

SPLENDID FRUIT DISTRICT.

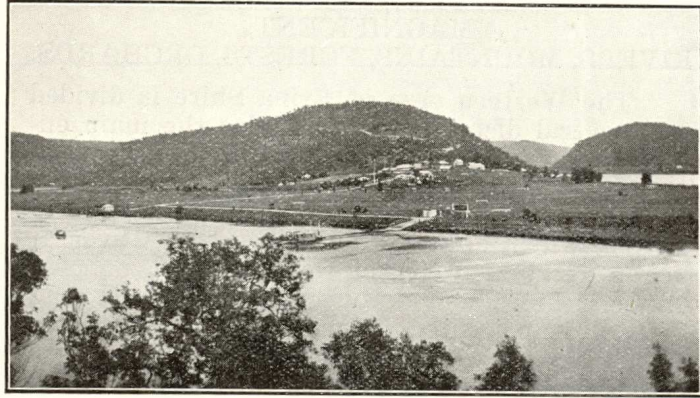
At the 11 mile peg on the Great Northern Road, a branch road leads to the Mangrove Mountain district. This road is the historic Peat's Line, over which the mails were carried by saddle horse to the north nearly a hundred years ago. The Mangrove Mountain district is noted for its citrus and passion fruit, the excellent quality of which has gained for this area an enviable reputation throughout the Commonwealth. Mangrove fruit exhibits have received championship honours at all the leading Shows for years past. The district is known as a "late" one for fruit; marketing from Mangrove does not commence till most other producing districts of the State have finished. Thus exceptionally high prices are obtained for the citrus and passion fruit. The ever-green orchards, set out at intervals along this road, provide a pleasing variation of outlook for the traveller. This district is also noted for its equable climate; the absence of frosts indicates the mildness of the winter, while the summer does not inflict extremes of heat.

At intervals along this road, and within easy access, are numerous good camping spots and places suitable for picnicing, provided by Nature with clear spring streams, grateful shade, and glorious outlooks. About four miles from the Great Northern Road there are some wonderful aboriginal carvings on the flat sandstones, and unmistakable traces of where the blacks shaped their stone tomahawks.

WONDERFUL MOUNT BUSHELL.

At Peat's Ridge, about seven miles from the main thoroughfare, a road one mile long will be noticed leading to Mount Bushell, which is a favourite picnic ground. This mountain rises about 500 feet above the beautiful Popran Creek (fresh water), and is composed of a blue metal basalt deposit, apparently a volcanic plug intruding in Hawkesbury sandstone. This volcanic rock is a dense, hard, olive basalt, occurring in columns varying from 6 to 15 inches across, and generally lying at a slight inclination from the horizontal, with the ends exposed. All round this mountain will be found scenic gullies studded with rock lillies, staghorns, birdsnests, gigantic maidenhair and many other ferns, and a profusion of flowering shrubs and beautiful trees.

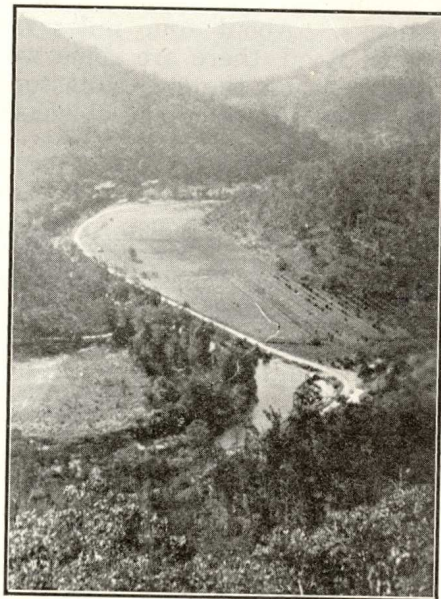
ERINA SHIRE



Wiseman's Ferry, "The Western Gateway into the Shire."



Mangrove Creek, Hawkesbury River.



From Mangrove Mountain, looking towards Wiseman's Ferry.

Many hours can be spent in exploring the beauties of this locality.

At the intersection of this road with the Gosford to Wiseman's Ferry Road, will be seen the Central Mangrove Citrus Packing House, a co-operative concern which grades, packs and markets in the most up-to-date way the products of its shareholder growers.

From here roads radiate in all directions and connection can be made with Gosford, Yarramalong, Ourimbah, Woy Woy, Wollombi, Mangrove Creek, and Wiseman's Ferry.

COMING IN VIA WISEMAN'S.

An alternative entrance to Erina Shire is that via Wiseman's Ferry. From here two roads lead; one by way of Ten Mile Hollow to Mangrove Creek, and another via Spencer to Mangrove Creek. From here the road lies over Mangrove Mountain to Gosford. On the route via Ten Mile Hollow, at ten miles from Wiseman's Ferry, an old road will be found branching to the left, leading to the old convict-built stone bridge (one mile), which still stands as an example of the work of the chain gangs of nearly a hundred years ago, and is well worth the detour.

The road via Spencer is one of the prettiest in the State. It traverses the northern bank of the Hawkesbury River and the western bank of Mangrove Creek, and throughout its whole length furnishes magnificent views. It passes through some very old-settled and historic localities, reminiscent of the convict period and the very early days of the then Colony.

GREAT SPORT FOR ANGLERS.

Ample sport is provided for the angler in this part of Erina Shire. The salt water areas of the Hawkesbury River, Mooney, Mangrove, and Popran Creeks are very well known to the fishermen of the State. With the advent of several new roads, the upper reaches of Mooney and Popran Creeks (fresh water) are now available. The many pools and streams provide a wide range of sport for anglers among the perch and other fresh water fish.

MORE RESERVES TO BE OPENED.

Many good camping and park areas remain to be opened up in this portion of Erina Shire. It is expected that the efforts of the Development League, with the co-operation of the Shire Council, will soon make these additional advantages readily available to the visiting and resident public.

The Western District of Erina Shire is rich in attractions for the beauty-loving visitor; and it is hoped that the tally of those who will be welcomed to enjoy its loveliness will be greatly increased as the months go by, and the ways of access are improved, notably by the bringing into use of the Great Northern Road. It is anticipated that by the construction of developmental roads, portions of the main road will be made available to motorists long before its final construction and surfacing are finished; and those interested are invited to watch for information on this point, so that they may come and appreciate the beauties of this area at the earliest possible moment.

No visitor who decides to make a tour of this district will be disappointed at the result of the resolve.

THE WONDERFUL HAWKESBURY

The Hawkesbury River, from Wiseman's Ferry to the sea, forms the southern and south-western boundary of Erina Shire. This section of the noble stream provides perhaps the most beautiful, and certainly the grandest and most rugged, scenery of all its notable course. The whole journey along the river unfolds scene after scene of everchanging wonderland, that raises feelings of admiration and rapture in even the most experienced and travelled seeker after Nature's beauties. Majestic mountains whose rocky bases form, check, turn and guide the winding watercourse, rear their bold and rugged sandstone precipices on either side, or greenly-fertile slopes roll gently to the water's edge, enlivening the aspect with pleasant views of orchard and garden, suggesting the great potentialities of the prolific valleys behind.

LOVELY SPENCER.

Ten miles up-stream from Brooklyn railway station, on a pretty hillside overlooking the junction of Mangrove Creek with the main river, nestles the neat little village of Spencer. This locality provides a favourite anchorage for the increasing number of yachting enthusiasts who take advantage of the unique facilities which these waters, with their proximity to the city, their deep and safe navigation, together with unrivalled scenery, offer to the yachtsman.

ACCESSIBLE BY ROAD.

As is well-known, the Hawkesbury River, right from Wiseman's to Broken Bay Heads, is one of the most favoured fishing grounds in the State, particularly esteemed by metropolitan anglers. Along the lower reaches, launches and boats may be hired for fishing or picnicing; and also a flourishing net-fishing, prawning, and oyster culture industry is carried on. Till the present, these desirable localities have been available only from Brooklyn railway station, or by water from Sydney; but with the completion of the new road from Wiseman's to Spencer, they will be within easy motoring distance of the city. The new road is now being constructed by the Main Roads Board, and will open to the car-owning public the panoramic beauties of the Lower Hawkesbury Valley, that hitherto have been the exclusive enjoyment of the privileged yachting fraternity.

GLORIES OF A NEW HERITAGE.

Of the effects and developments following the opening of this new road (which after passing Spencer will cross Mangrove Creek and connect with the new direct Sydney to Newcastle Road, thus completing a round route from Sydney), it is difficult to foretell the extent. Here is a district, blessed with almost every charm which Nature may bestow, till now practically isolated from the outside world by the barrier of its own glories, its uncrossed gorges and undefiled hills. That an immense transformation must follow its penetration by an up-to-date motor road is obvious. As a proposition for the touring public,

like many other places of beauty within the Shire, it will need no advertisement. Such picturesque beauty, such consummate grandeur is rightly the inheritance of the nation; and the nation is, by the hands of its engineers, slowly but surely reclaiming this glorious heritage.

THE POPRAN VALLEY

Popran Creek junctions with Mangrove Creek's left bank, almost opposite Chapel Point, more correctly known as Trinidad Point. Its source is up on the Popran-Mangrove Mountain, and it waters a valley about 20 miles in length.

The Mountain settlements are of comparatively recent date. But Bushell's country, now famous for its marvellous blue metal deposit, being exploited by the Great Northern Blue Metal Co., was alienated from the Crown many years ago by the late Samuel Taylor.

SOME INTERESTING HISTORY.

The oldest settlement, however, of the Popran Valley was made by the grandfather of the present occupants, about four miles up the creek. Here Edmund Kelly received his grant from the State in 1816, and subsequently purchased other lands adjoining. He also induced the McDonald brothers (Army men) to settle on the opposite bank of the Popran, and they received a grant of 300 acres under the name of Glenworth Valley.

In 1845 they sold out to Edmund Kelly, who then farmed both sides of the valley, and subsequently settled his two sons—who arrived from Ireland in 1842 in the good ship "Royal Saxon," owned and commanded by Edmund Kelly's old friend Bobby Towns—one on each side of the creek.

A PROLIFIC VALLEY.

The valley was famous in those far-off days for its maize growing and its timber, and many of old Sydney's houses were roofed with shingles from the Popran, and many a log of excellent hardwood was hand-sawn and shipped to Sydney by the numerous sawyers who worked in this valley. To-day, in many of the places occupied by them, only a memory and a name remain. We have Donovan's Point, Toomey's Hill, Row's Gully, Atkins' Water, Nightingale's Farm, Paddy Kelly's Farm (he was a brother to Edmund), Lord's Hill, and others. The McDonalds got their 300 acres in 1819, though they were promised the grant a few years previously, and were in possession before the grant was issued. They built a stone house which still stands.

RARE BEAUTY.

The Popran Valley is wonderfully picturesque; even more so, probably, than its great mother, the Hawkesbury River. The writer has seen the Old World and the New, and many parts of Australia, but has seen nothing to surpass the Popran Valley; and those who have seen the valley and have expressed an opinion, acknowledge its rare beauty.

Its fertile flats now, after 112 years' occupation, are still desirable. The waters of Popran Creek are only tidal and navigable for about four miles; after that beautiful fresh water comes down from the mountains. There is a small island about one and a half miles up the creek, that has the distinction of being named by Henry Kendall "Spurt Island." The late P. J. Holdsworth, in his book of poems, immortalised the creek in his "Valley of the Popran."

MOONEY CREEK

Mooney Mooney Creek (to use its original double designation) is a tributary of the Hawkesbury River, and is navigable for 14 miles of its beautiful length. It is a lovely stream, passing through a valley rich in natural loveliness, with a wealth of varying scenery of wonderful attractiveness.

The creek is also noted for its good fishing grounds, the principal sport being with bream, jewfish, and flathead. In the summer, it abounds with prawns.

LOVELY LITTLE MOONEY.

Little Mooney runs into Mooney Creek about $11\frac{1}{2}$ miles from the mouth of the latter. The bridge that is to carry the Great Northern Road across Mooney Creek is situated $11\frac{3}{4}$ miles up the stream, and is above the ford across which in the early days Kendall carried the Sydney mails on his journeys between Gosford and Hawkesbury River.

About a mile above the bridge, the Mooney turns abruptly to the west. At 13 miles, Floods Creek runs into it; and Somersby Falls are situated at the head of the latter. The head of "Saltwater Mooney" is 14 miles from the mouth; and here "Freshwater Mooney" empties into it. Freshwater Mooney is noted for perch and sprat fishing, and large crayfish are also found there.

ABORIGINAL CAVE.

Near the bridge over Mooney, is a cave in which the imprints of blacks' hands are seen. To reach the cave, it is necessary to go from the bridge towards Gosford. Pass along the embankment bridge approach, and follow the road past a big side cutting. At the end of the cutting, the road bends uphill in a southerly direction. Go up the gully at the end of the cutting, towards the north, for about a hundred yards. Reaching the saddle of the hill where there is a wire fence, a slip panel will be seen. There will be noticed a lot of sandstone rocks, between the fence and Mooney Creek. In the first rock will be found the shallow cave, facing west; and on the back wall are the imprints of the aboriginals' hands.

Mooney Creek may be reached, as to its lower reaches, from the Hawkesbury River, via Brooklyn. The Erina Shire section of the Great Northern Road commences from Mooney Point, near the junction of the creek with the river. The upper portions of Mooney Creek may be reached from Gosford, passing through Somersby.

KULNURA

This is an orcharding district on the Mountain, north-west of Gosford. It is reached by the main road between that town and Mangrove, and a branch road leads down Bumble Hill (a fine scenic trip, skirting an unexpected face of sheer cliff) into Yarramalong, and thence to Wyong. Much of the land round Kulnura is of fine productive quality, and citrus, passion and other fruits of high quality are exported. On the land still to be cleared, good timber stands. The attractions for visitors include charming natural bush scenery, and beautiful gullies leading down towards Ourimbah and Ourimbah Creek.

Near Kulnura the two streams which join to make Ourimbah Creek have their rise, and the water is notably pure. Kulnura has post office, telephone, school, hall, Church, with daily mail and parcels service by motor lorry. About 14 miles from Gosford, seven from Mangrove.

MANGROVE

Mangrove is on the creek of that name, about 16 miles from Wiseman's Ferry, and somewhat less from Spencer. It is near the old Great Northern Road, and another road leads to Spencer. Centre of rich crop production on the creek bottoms, and prosperous orcharding on the hill-sides and heights. Fine timber in the neighbourhood. Post office, telephone, daily motor lorry connection with Gosford; hall, store.

Lower Mangrove (to the south-east) and Upper Mangrove (north-west) are other villages on the creek, within a few miles.

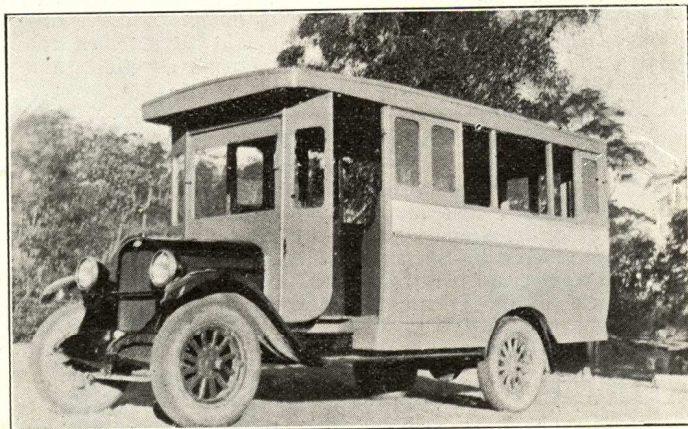
MANGROVE MOUNTAIN

HOW TO GET THERE

BLUE BUS SERVICE

Trips Once Daily (Sundays Excepted) from Gosford

Passengers conveyed to the following centres:
Boys' Training School, Somersby, Peat's Ridge, Kulnura,
Mangrove Mt. and Green Grove



2.10 p.m. train from Sydney met on arrival
On Saturdays, 'bus leaves Gosford at 1.30 p.m.
10.45 a.m. train to Sydney caught daily

To all who would soothe their unsettled nerves, revive their jaded spirits, regain their lusty health and appetite—to all who seek the tonic of pure mountain air, the whole day long and the clear night through—the call to Mangrove Mountain is irresistible.

C. JENKINS

MANN STREET, GOSFORD

Phones: Gosford 43 and Somersby Exchange

SPENCER

Spencer is at the junction of the Mangrove Creek with the Hawkesbury River. By water from Brooklyn railway station (Hawkesbury River) it is ten miles; regular launch services run. The road from Wiseman's Ferry is now being reconstructed by the Main Roads Board; distance about 13 miles. Another road connects with Mangrove, to the north, about eight miles. Spencer has post office, telephone, hall, store, school. Produces fine maize and other crops, various varieties of fruit; and there is good timber in the locality. Spencer offers the visitor some of the loveliest scenery to be found in any country and no person who can possibly see it should miss doing so. Along the reaches of the mighty Hawkesbury River, up the quiet bends of lovely Mangrove Creek, round the several roads which centre upon Spencer, through the valleys or aloft on the ranges, there is an ever-varying wealth of Nature's beauty lavishly flung on every hand. One could spend months in the neighbourhood, and not exhaust its attractions. Spencer is a favourite resort of yachtsmen, and the splendid fishing also draws many devotees of the art. A considerable quantity of fish, oysters, and prawns are exported, in addition to large volumes of fruit and vegetables. These products are carried by river steamers which ply regularly.

WISEMAN'S FERRY

This famous place is at the point where the main Northern Road traffic has for many years crossed the great Hawkesbury River en route to the north and north-west—for most of the time by a primitive punt, lately somewhat improved. The boundaries of three Shires—Erina, Hornsby, and Colo—meet at Wiseman's Ferry, which is the south-west extremity of the first-named. The three Shires jointly control the ferry, which is expected to lose much of its importance with the establishment of the new and shorter road to the north, which will cross the Hawkesbury at Peat's Ferry, many miles down the river. At Wiseman's there is a hotel, post office, telephone, school, hall, churches, stores. Many prosperous farms adorn the rich river flats, and with orchards, stretch up the hillsides; and the volume of produce sent away is great. There is of course a constant stream of traffic along the main thoroughfare, and tourists find much to admire in the vicinity of the ferry. It is a natural halting place, and there are several happily situated picnic spots handy to the road. Wiseman's has many historic associations, and old residents can relate some captivating stories of the early days. Not far distant is the confluence of the Macdonald River with the Hawkesbury. From Gosford to Wiseman's is 41 miles, and from Wiseman's to Sydney 60 miles.

ROUND TRIPS

These may be made in many directions by car, and in others by boat. The maps show the routes, and by any of them glorious scenery will be discovered. The new road from Wiseman's to Spencer will be a glorious trip; and the run to Gosford may be varied, or the route taken down the "back" of the Penang to Yarramalong. There is also a branch road into Woy Woy.

HELP FOR VISITORS

The officials and members of the Erina Shire Development League are anxious to do all in their power to make the sojourn of visitors pleasantly satisfactory, by affording any needed information. To this end Information Bureaux have been established in the chief towns, and in other places residents who are League executives or members may be readily found, and will be pleased to answer inquiries.

The information Bureaux are located at:—

Gosford: Messrs. Lloyd & King, Great Northern Garage, Mann St. (right at railway station). Phone Gosford 88.

Woy Woy: Mr. Bert Vokes, Property and Estate Agent at Railway Entrance. Phone Woy Woy 53.

Wyong: Mr. Leslie A Warner, Property and Estate Agent, Railway St. (near station). Phone Wyong 18; P.O. Box 21. For League Representatives, see Gosford Section.



Coastal view from Killcare Heights, showing Killcare Beach on the left foreground; Hardy's Bay, Pretty Beach, Wagstaffe and Ettalong Beach on the right, and Broken Bay and Pearl Beach in the distance.