

Welcome to the Weld Valley



A journey of discovery into the magnificent Southern Forests.

Experience towering forests, tranquil walks and fascinating history in the Weld Valley State forest.

Catch a bird's eye view over the isolated and ancient landscapes of the Tasmanian Wilderness World Heritage Area.

The gateway to the Southern Forests

The Weld Valley is home to many heritage places, including regrowth forest, oldgrowth forests, caves, pristine rivers and Aboriginal cultural sites.

These places are so special that they are protected for all time within the Tasmanian Wilderness World Heritage Area. So that they remain safe from outside disturbance, there are no roads or visitor facilities in these areas.

With these vast areas of Tasmania's wilderness fully protected, a small area of the Weld Valley is managed as State forest. Here, conservation is balanced alongside other values, including tourism and sustainable timber production. All of the valley's special values, including clean water, karst formations, and rare species such as the Wedge-Tailed Eagle and recently discovered Denison Crayfish, remain fully protected in this area.

Come and see the Weld Valley for yourself

The Weld Valley State Forest is an important source of high quality wood products, such as eucalypt sawlogs and veneers, and the special Tasmanian timbers that are used for wood design and furniture making.

However, wood production is just part of the Weld Valley story. Come and see for yourself how the balance is maintained.

Forestry Tasmania welcomes visitors of all ages and fitness levels to the Weld Valley State Forest. With highlights including the spectacular vista from Glover's Bluff and the cool temperate rainforest surrounding Rueben Falls, there's plenty to see and do.

Come and explore all that this region has to offer.

Discovery - Exploration - Adventure
Weld Valley Forests



Special Species Timbers



Try fishing or just experience the pristine waters



Flowering Leatherwood for honey



Explore diverse landscapes



Tahune AirWalk

The Tahune AirWalk, located only 30 minutes' drive from Geeveston, is your hub for exploring the Southern Forests. Encounter the diversity of life in the canopy of a wet eucalypt forest from this tree top walk, dramatically located above the confluence of the Huon and Picton Rivers.

Make the AirWalk a part of your total forest experience – it's a natural prelude to exploring the Weld Valley.

The Tahune AirWalk is open seven days a week, except Christmas Day and Good Friday.

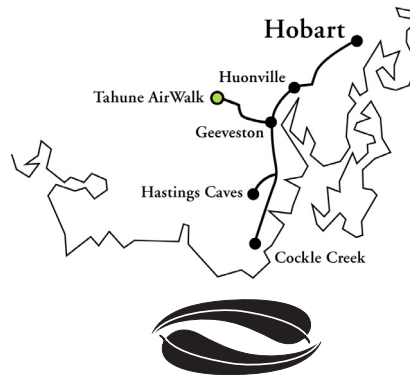
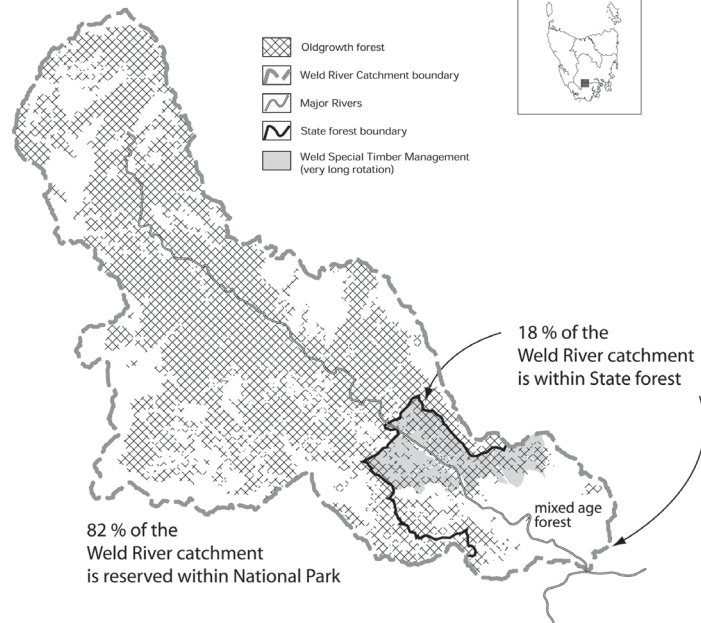
For more information, please call 6297 0068 or visit www.tahuneairwalk.com.au



Weld River Catchment

0 5 Km

- Oldgrowth forest
- Weld River Catchment boundary
- Major Rivers
- State forest boundary
- Weld Special Timber Management (very long rotation)



Forestry Tasmania
GROWING OUR FUTURE

79 Melville Street – Hobart – Tasmania – 7000
e-mail forestry.tasmania@forestrytas.com.au
www.forestrytas.com.au

