

Country Presentation
The 4th Asean & Japan High Level Officials Meeting
on Caring Societies
28.8.2006.to 31.8.2006
DR Kyee Myint
Deputy Director (Medical Care)
DEPARTMENT OF HEALTH
Ministry of Health, Myanmar.

NATIONAL HEALTH POLICY

National Health Committee.

- Primary Health Care Approach.
- 15 Objectives.
- To Foresee any emerging health problem that poses a threat to the health and well being of the people of Myanmar, so that preventive and curative measures can be initiated.
- To intensify and expand environmental health activities including prevention and control of air and water pollution.

NATIONAL HEALTH PLAN (2001-2006)

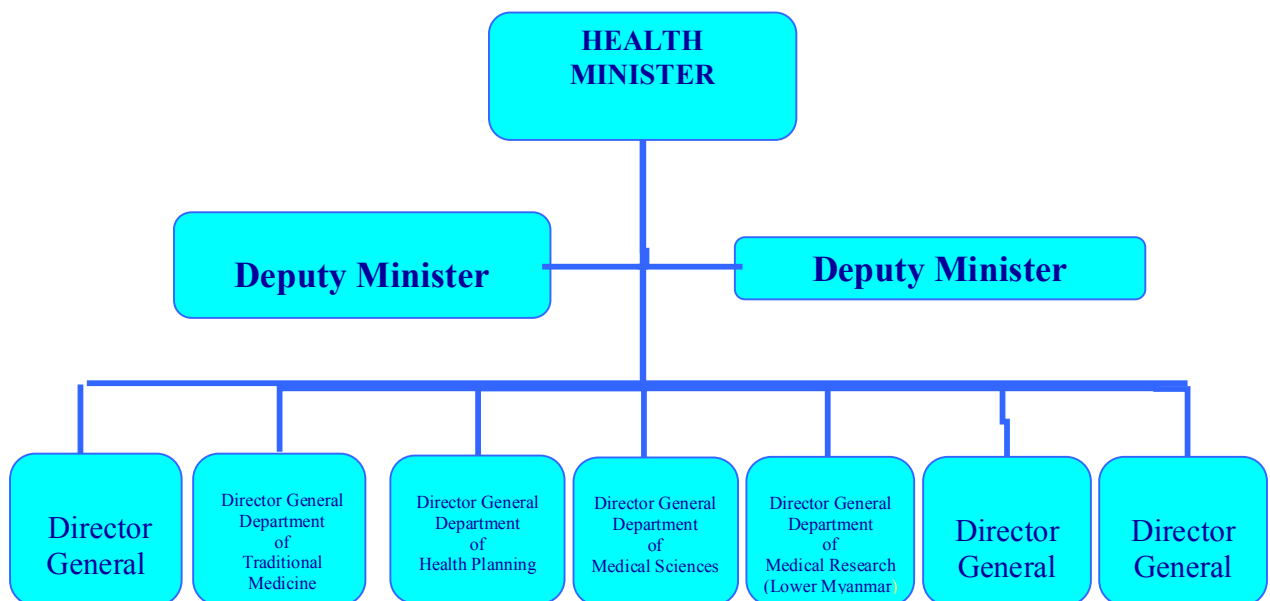
6 BROAD PROGRAMMES

- Community Health Care Programme
- Disease Control Programme
- Hospital Care Programme
- Environmental Health Programme
- Health Systems Development Programme
- Organization and Management Programme

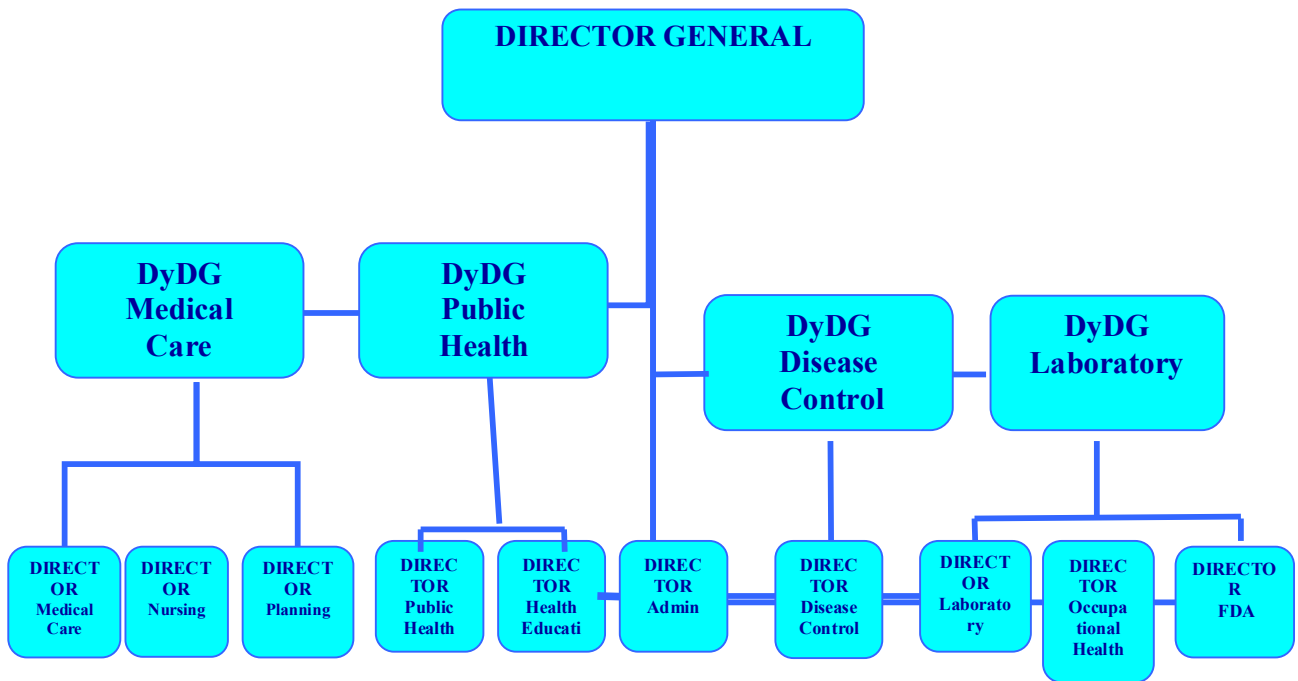
The Department of Health (DOH)

- Provision of Health Care Services.
- One D.G, Four Dy D.Gs
- Eight Directors
 - General Administration
 - Administration and Planning
 - Medical Care
 - Public Health
 - Disease control
 - Nursing
 - Food and Drug Control
 - Laboratory
 - Occupational Health
 - Health Education

Organization of the Ministry of Health

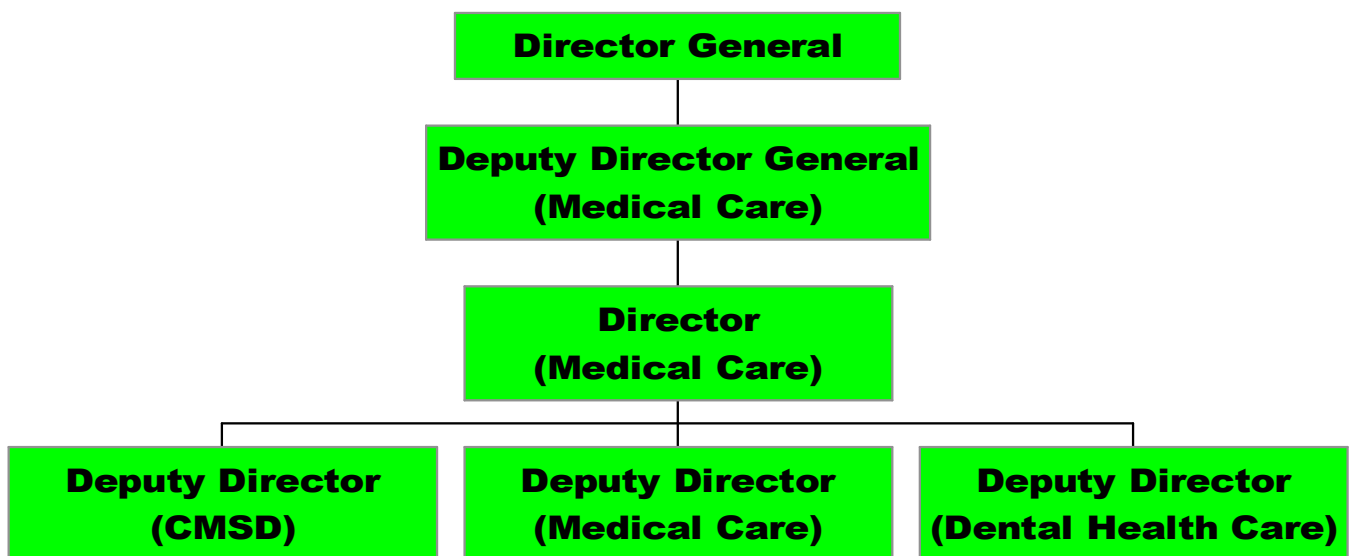


Organization of the Department of Health



Organization of Medical Care Division

Department of Health



Flow of Health Services



- ❖ The Ministry of Health has taken the responsibility of raising the health status of the people through providing promotive, preventive, curative and rehabilitative measures.
- ❖ Maximum community participation in health activities is encouraged. Collaboration with related departments and social organizations has been promoted by the ministry.

Women's Empowerment

- The Myanmar government is committed to adopt the Beijing Platform for Action and to implement the Conference Program's in accord with the national political, social objectives.
- It also recognizes the important role of women in social development and it is taking priority actions to enhance the advancement of women's health and their empowerment.

Law and Strategic policy on women's health and empowerment

The government (State Peace and Development Council) laid down the following policy guidelines for the women's Affairs:

- (a) To effectively promote the health, education and socio-economic status of the entire mass of Myanmar Women down to the grass-root level.
- (b) To educate and organize the Myanmar Women to uphold the tradition, culture and to safeguard one's own lineage and religion with a view to combat the infiltration and influence of foreign culture which could lead to social problems.
- To strive the union for the emergence of a peaceful, modern and developed nation by all the women force from government departments, non-governmental organizations, social organizations and member of USDA at various levels engaged in Women's Affairs.
- (d) To implement the resolutions of the World women's conference into action in accord with the State Policy and political, economical and social objectives.
- (e) To make endeavors by the Women's sector in assisting the political, education and social objectives of the State by formulating relevant aims and objectives based on the momentum of success gained.

Health Impact Indicators
2005

1	Population	52.17 Millions	
2	Life expectancy at birth	Men Urban- 61.5 yrs Rural - 60.8 yrs	Women 65.6 yrs 63.3 yrs
3	Crude birth rate	urban 23.9/ 1,000 pop rural 26.3 / 1,000 pop	
4	Crude death rate	urban 6.2/ 1,000 pop rural 7.1 / 1,000 pop	
4	Proportion of LBW (<2500gm)	12%	
5	IMR	49.7/ 1,000 LB	
6	U5MR	66.1/ 1,000 LB	
7	PNMR	26.6/ 1,000 LB	
8	MMR	2.55/ 1,000 LB	

Summary information on obstetric care situation in Myanmar

Antenatal Care Coverage 73 %

Birth attendants at delivery

Doctors 13 %

Nurses & Midwives 44 %

Trained auxillary MW 38.9 %

Others(Traditional) 4.1 %

Statistical data on Reproductive Health Care in Myanmar

Myanmar Literacy Rate	91.4 %(overall)
Woman	91 %
Man	91.7 %
60 % of total population	Women & Children
MCH service provision	Urban & Rural
Life Cycle Approach	Safe motherhood
Collaboration	MCWA & MWAFF
Social support provision	AMWs & Youths

Maternal & Child Health Services in Myanmar

MCH session	Central & all level
MCH teams	One Doctor, one Lady Health Visitor, Midwives , Nurses & Medical Social Worker
Hospital based Obstetric & Gynaecological services	
Maternity Homes	By private & NGOs
Immunization service	By public health staff
Special Hospitals for Women and children	(Yangon , Taungyi & Mandalay)
Community based MCH service	All level equal access

Essential Package of Reproductive Health Care in Myanmar

- Safe motherhood
- Birth Spacing
- Prevention & management of abortion and its complication
- Management of Infertility, Sexually Transmitted Disease, Reproductive Tract Infection
- Adolescent Reproductive Health
- Cancer prevention, Violence Prevention
- Family Health Care
- Life span approach on Nutrition , Healthy Life , Basic Education

Policy guidelines

- National Health Policy
 - Guidelines of National Population Policy
- National Population Policy
 - Awareness promotion on reproductive responsibility and paternal involvement
- Myanmar Reproductive Health Policy
- 5 year RH Strategic Plan (2004-2008)

Co-ordination with related departments and organizations for Women's Health

- ❖ Programme/project activities
 - RH programme with MMCWA, MMA, JICA/JOICFP
 - ARH with MMCWA and DHP
 - PAC with MMA and MRCS
 - PAC with NOGH, South Okkalapa WCH
 - Programme/project activities
- ❖ Research activities
 - ❖ UN organizations, INGOs & National NGOs (MMCWA)
 - ❖ DMR, DHP, Medical Institutes
 - ❖ Maternal death review at CWH, Thingangyun Hospital and Mandalay General Hospital

Training for Mid wives & Auxillary Nurse Midwives

- Training on essential RH packages
 - Master Training on Teaching Methodology
 - TOT at S/D level on Integraeted RH Services
 - Multiplier Training to BHS and VHWS
- Training on Safe motherhood (PCPNC)

Premises renovation on Labour room at rural area

- Premises renovation
 - 13 project townships in Mandalay Division (accomplished)
 - Magway Division (proposed)
- Rural Health Development and RHCs with labour room attached
 - 58 RHCs

Monitoring and Supervision on reproductive health

- Integrated monitoring with WHO, UNFPA and DHP
- Training quality and commodities management
- INGO's project sites: field monitoring

Advocacy for adolescents on life long reproductive health

- Advocacy for RH and ARH (Central)
- State/Divisional level advocacy for youths on RH
- Township level advocacy for both urban and rural young girls on RH

Safe Motherhood

Contents

- Antenatal care
- Safe and aseptic delivery
- Postnatal care and Neonatal care
- Post Abortion Care
- Maternal nutrition
- Immunization
- Management of UTIs , RTIs & PMCT project
- Birth spacing

Post-Abortion Care

- Health education
- Patient refer
- Pre hospital care
- NGO involvement

Adolescent Reproductive Health

- Jointly implemented with CHEB, DHP
 - ARH corner / Adolescent Information Centre
- Co-ordinated with MMCWA
- In-school and out-of-school ARH information and counseling

Management of RTIs/STIs

- Procurement and distribution of RTI drugs
- Upgrade laboratory facilities and training
- Prevention of Mother to Child Transmission

- Routine AN screening for Syphilis

Project Name: Community-Oriented Reproductive Health Project in the Union of Myanmar

Duration: January 2005 to December 2009

Target Area: Naungcho and Kyaukme

Target Group: Women of Reproductive Age (15-49) in Naungcho and Kyaukme

Overall Goal

- Reproductive health status improve in project areas and expanded areas of the Union of Myanmar

Project Purpose

- Utilization of quality RH services increases in the project areas
- Best practices and approaches identified from the Project are applied to RH programmes in Myanmar

Challenges

- Safe and clean home delivery
- Sufficient manpower
- Improved facilities and equipment
- Public – Private competition
- Improved quality of services
- Safe and supportive environment

Department of Health

- ❖ is responsible for providing all of the promotive, preventive, curative and rehabilitative health care services to the entire population in the country.
- ❖ is also responsible for planning, administration and management, training, supervision and evaluation of health services.

Hospital Care Programme Consists of the following projects

- Upgrading of the Hospitals
- Quality of Care in Health Institutions
- Myanmar Essential Drugs
- Border Area Health Development
- Medical Social Work
- Snake Bite Control
- Cardiovascular Disease Control
- Diabetes Control
- Cancer Control
- Accident Prevention
- Rehabilitation
- Prevention of Deafness

Drug Treatment Centres

➤ Major drug treatment centres	26
➤ Minor drug treatment centres	40
➤ Rehabilitation centres	3
Total	69

Border Area Health Activities

1. Promotive, Preventive, Curative and Rehabilitative Health Care Services to the community living in border areas.
2. Coordinating health activities with other ministries and NGOs.
3. Implementing bilateral and multilateral health activities with neighbouring countries.

HOSPITALS

Sr .no	Type	1988	2000	7/2006
1.	Total Hospitals	617	718	806
2.	Hospitals with MCH service	617	718	806

INFRASTRUCTURE DEVELOPMENT (Border Area)

Sr no	Type	1988	1/2006
1.	Hospitals	6	79
2.	Dispensaries	8	105
3.	RHC	—	58
4.	Sub-Centre	—	140

Appointment of Specialists since 1997

(6 disciplines to District Hospitals & all State and Divisional Hospitals)

1. Medicine
2. Surgery
3. Obs. &Gyn.
4. Paediatrics
5. Anaesthesia
6. Dental

Capacity Building

- Training conducted by the respective projects at different levels (from central to township levels)/Multiplier courses at S/D, Districts, Townships level
- Total 820 Auxiliary nurse midwives had been trained between 1997 & 2001-2002 in border areas.
- (Border area health development project jointly conducted by DOH/UNICEF had been discontinued since 2001-2002)
- Appointment of 35 SSMOs