

The University of California

Statistical Summary of Students and Staff



Fall 2009



Statistical Summary of Students and Staff

University of California

Fall 2009

Foreword

The University of California *Statistical Summary of Students and Staff* for fall 2009 is divided into three sections: Enrollment, Degrees Conferred, and Personnel. Each section provides information for the University as a whole and for each of the ten campuses at which students are enrolled: Berkeley, Davis, Irvine, Los Angeles, Merced, Riverside, San Diego, San Francisco, Santa Barbara, and Santa Cruz. The Personnel section also provides information for the Office of the President and the Division of Agriculture & Natural Resources. Explanatory notes located at the end of the document provide definitions for the terms used in the tables.

In addition to current year information, this *Statistical Summary of Students and Staff* displays statistics for the prior year and the percentage change between years. Further historical data are available on the *Statistical Summary of Students and Staff* web site at:

<http://www.ucop.edu/ucophome/uwnews/stat/>

Data for the *Statistical Summary of Students and Staff* were generated from the University of California Corporate Student System and Corporate Personnel System. These systems are maintained by the Office of the President and incorporate data provided by the campuses. Questions about the content of the Enrollment and Degree sections of the report should be directed to Dominique Pfaff at (510) 987-0394. Questions about the content of the Personnel section of the report should be directed to Karla Holmberg at (510) 987-0398.

An electronic version of the *Statistical Summary of Students and Staff* for fall 2009 may be downloaded from <http://www.ucop.edu/ucophome/uwnews/stat/>. Printed copies may be obtained from the Office of the President by calling (510) 987-0394.

Prepared by:

Department of Information Resources and Communications

Office of the President

University of California

NONDISCRIMINATION STATEMENT

The University of California, in accordance with applicable Federal and State law and University policy, does not discriminate on the basis of race, color, national origin, religion, sex, gender identity, pregnancy,¹ physical or mental disability, medical condition (cancer related or genetic characteristics), ancestry, marital status, age, sexual orientation, citizenship, or service in the uniformed services.² The University also prohibits sexual harassment. This nondiscrimination policy covers admission, access, and treatment in University programs and activities.

¹ *Pregnancy* includes pregnancy, childbirth, and medical conditions related to pregnancy or childbirth.

² *Service in the uniformed services* includes membership, application for membership, performance of service, application for service, or obligation for service in the uniformed services.

Inquiries regarding the University's student-related nondiscrimination policies may be directed to Eric Heng, (510) 987-0239.

The University of California policy on affirmative action and nondiscrimination regarding employment practices may be found at

http://atyourservice.ucop.edu/employees/policies_employee_labor_relations/pres_policies/0806-nondiscrim_policy_state_pub.pdf

The University of California policy on affirmative action and nondiscrimination regarding academic appointments may be found at <http://www.ucop.edu/acadadv/acadpers/apm/apm-035.pdf>

Inquiries regarding the University's equal employment opportunity policies may be directed to:
Academic: Pat Price, (510) 987-9482; Staff and Management: Joe Epperson, (510) 987-0606.

Table of Contents

Fall Enrollment

Figure 1	Undergraduate Enrollment by Campus, 1999-2009.....	1
Figure 2	Graduate Enrollment by Campus, 1999-2009.....	1
Table 1	Enrollment by Campus, Level, and Gender	
	a. General Campus and Health Sciences Combined.....	2
	b. General Campus.....	4
	c. Health Sciences.....	6
Table 2	Enrollment by Campus, Registration Status, and Level.....	7
Figure 3	New Undergraduate Students by Campus, 2005-2009	8
Figure 4	New Graduate Students by Campus, 2005-2009.....	8
Table 3	General Campus Enrollment by Campus, Full-time/Part-time Status, Gender, and Level	9
Table 4	General Campus Enrollment by Campus, Discipline, and Level	10
Table 5	Health Sciences Enrollment by Campus, Discipline, and Level.....	14
Table 6	Enrollment by Campus, Residency Status, and Level	16
Table 7	Enrollment by Ethnicity, Gender, and Level	
	a. Berkeley	17
	b. Davis	18
	c. Irvine	19
	d. Los Angeles	20
	e. Merced	21
	f. Riverside	22
	g. San Diego	23
	h. San Francisco	24
	i. Santa Barbara.....	25
	j. Santa Cruz.....	26
	k. University Total	27

Degrees Conferred

Table 8	Degrees Conferred by Campus, Degree Type, and Gender.....	28
Table 9	Degrees Conferred by Discipline and Degree Type.....	30

Personnel

Table 10	Personnel FTE and Headcount by Campus and Personnel Program.....	31
Table 11	Personnel Headcount by Ethnicity, Personnel Program, and Gender	
	a. Berkeley	33
	b. Davis	34
	c. Irvine	35
	d. Los Angeles	36
	e. Merced	37
	f. Riverside.....	38
	g. San Diego	39
	h. San Francisco.....	40
	i. Santa Barbara.....	41
	j. Santa Cruz.....	42
	k. Office of the President	43
	l. Agriculture & Natural Resources	44
	m. University Total	45

Explanatory Notes.....	46
-------------------------------	-----------

Figure 1: Undergraduate Enrollment by Campus, 1999-2009

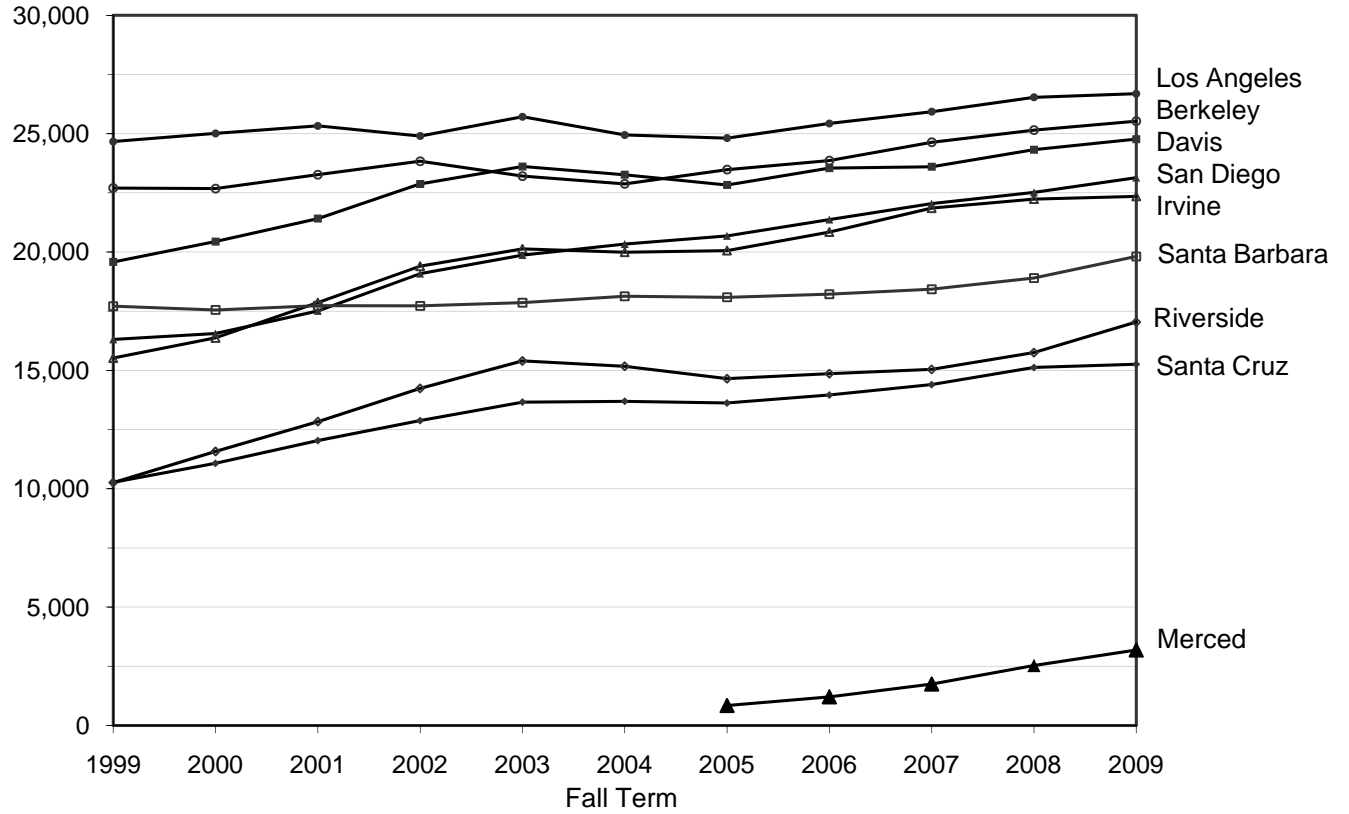


Figure 2: Graduate Enrollment by Campus, 1999-2009

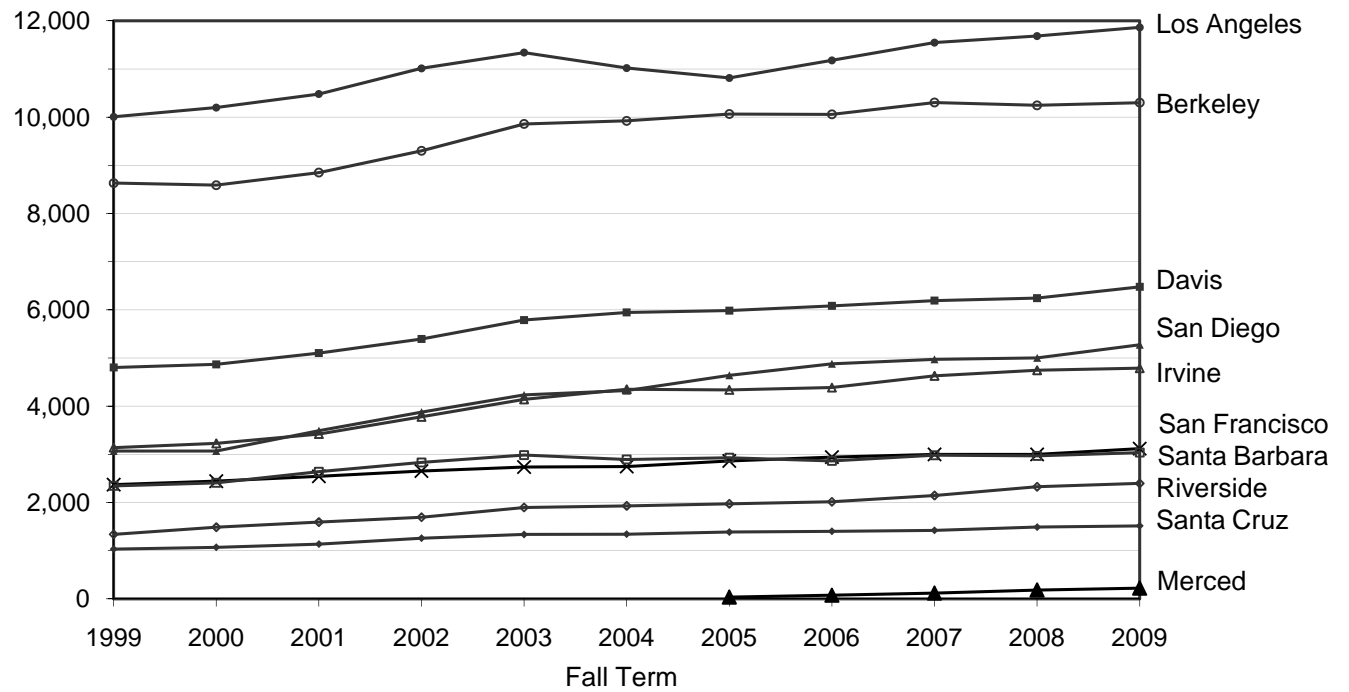


Table 1a: Enrollment by Campus, Level, and Gender: General Campus and Health Sciences Combined

	Fall 2008				Fall 2009				One-year change		
	Female	Male	Unk	Total	Female	Male	Unk	Total	Female	Male	Total
Berkeley	17,990	17,419	0	35,409	18,153	17,690	0	35,843	1%	2%	1%
Undergraduate	13,387	11,764	0	25,151	13,510	12,020	0	25,530	1%	2%	2%
Lower Division	4,498	3,627	0	8,125	4,359	3,434	0	7,793	-3%	-5%	-4%
Upper Division	8,889	8,137	0	17,026	9,151	8,586	0	17,737	3%	6%	4%
Graduate	4,597	5,648	0	10,245	4,634	5,666	0	10,300	1%	0%	1%
1st Stage	3,585	4,434	0	8,019	3,611	4,440	0	8,051	1%	0%	0%
2nd Stage	1,012	1,214	0	2,226	1,023	1,226	0	2,249	1%	1%	1%
Resident	6	7	0	13	9	4	0	13	50%	-43%	0%
Davis	17,320	14,106	0	31,426	17,733	14,420	0	32,153	2%	2%	2%
Undergraduate	13,706	10,618	0	24,324	13,938	10,832	0	24,770	2%	2%	2%
Lower Division	6,004	4,387	0	10,391	5,600	4,074	0	9,674	-7%	-7%	-7%
Upper Division	7,592	6,205	0	13,797	8,229	6,723	0	14,952	8%	8%	8%
Postbaccalaureate	110	26	0	136	109	35	0	144	-1%	35%	6%
Graduate	3,199	3,045	0	6,244	3,326	3,151	0	6,477	4%	3%	4%
1st Stage	2,627	2,447	0	5,074	2,741	2,488	0	5,229	4%	2%	3%
2nd Stage	572	598	0	1,170	585	663	0	1,248	2%	11%	7%
Resident	415	443	0	858	469	437	0	906	13%	-1%	6%
Irvine	13,967	13,522	142	27,631	14,172	13,506	114	27,792	1%	0%	1%
Undergraduate	11,702	10,404	132	22,238	11,889	10,354	110	22,353	2%	0%	1%
Lower Division	5,116	4,069	42	9,227	4,748	3,611	26	8,385	-7%	-11%	-9%
Upper Division	6,506	6,299	90	12,895	7,050	6,707	84	13,841	8%	6%	7%
Postbaccalaureate	80	36	0	116	91	36	0	127	14%	0%	9%
Graduate	1,954	2,792	0	4,746	1,966	2,822	1	4,789	1%	1%	1%
1st Stage	1,565	2,272	0	3,837	1,582	2,272	1	3,855	1%	0%	0%
2nd Stage	389	520	0	909	384	550	0	934	-1%	6%	3%
Resident	311	326	10	647	317	330	3	650	2%	1%	0%
Los Angeles	21,033	18,617	0	39,650	21,173	18,811	0	39,984	1%	1%	1%
Undergraduate	14,694	11,842	0	26,536	14,838	11,849	0	26,687	1%	0%	1%
Lower Division	4,678	3,483	0	8,161	4,715	3,322	0	8,037	1%	-5%	-2%
Upper Division	10,016	8,359	0	18,375	10,123	8,527	0	18,650	1%	2%	1%
Graduate	5,607	6,077	0	11,684	5,562	6,301	0	11,863	-1%	4%	2%
1st Stage	4,879	5,275	0	10,154	4,856	5,465	0	10,321	0%	4%	2%
2nd Stage	728	802	0	1,530	706	836	0	1,542	-3%	4%	1%
Resident	732	698	0	1,430	773	661	0	1,434	6%	-5%	0%
Merced	1,252	1,461	5	2,718	1,637	1,765	12	3,414	31%	21%	26%
Undergraduate	1,184	1,345	5	2,534	1,554	1,624	12	3,190	31%	21%	26%
Lower Division	745	841	3	1,589	1,048	1,044	9	2,101	41%	24%	32%
Upper Division	439	504	2	945	506	580	3	1,089	15%	15%	15%
Graduate	68	116	0	184	83	141	0	224	22%	22%	22%
1st Stage	59	97	0	156	68	111	0	179	15%	14%	15%
2nd Stage	9	19	0	28	15	30	0	45	67%	58%	61%
Riverside	9,271	8,776	32	18,079	9,971	9,429	39	19,439	8%	7%	8%
Undergraduate	8,178	7,542	32	15,752	8,852	8,151	39	17,042	8%	8%	8%
Lower Division	4,581	4,186	2	8,769	4,997	4,394	4	9,395	9%	5%	7%
Upper Division	3,562	3,348	29	6,939	3,828	3,738	35	7,601	7%	12%	10%
Postbaccalaureate	35	8	1	44	27	19	0	46	-23%	138%	5%
Graduate	1,093	1,234	0	2,327	1,119	1,278	0	2,397	2%	4%	3%
1st Stage	839	917	0	1,756	816	945	0	1,761	-3%	3%	0%
2nd Stage	254	317	0	571	303	333	0	636	19%	5%	11%

Table 1a: Enrollment by Campus, Level, and Gender: General Campus and Health Sciences Combined

	Fall 2008				Fall 2009				One-year change		
	Female	Male	Unk	Total	Female	Male	Unk	Total	Female	Male	Total
San Diego	14,187	14,013	0	28,200	14,523	14,587	0	29,110	2%	4%	3%
Undergraduate	11,743	10,775	0	22,518	12,004	11,139	0	23,143	2%	3%	3%
Lower Division	4,479	3,525	0	8,004	4,204	3,360	0	7,564	-6%	-5%	-5%
Upper Division	7,264	7,250	0	14,514	7,800	7,779	0	15,579	7%	7%	7%
Graduate	2,117	2,885	0	5,002	2,198	3,077	0	5,275	4%	7%	5%
1st Stage	1,715	2,318	0	4,033	1,765	2,473	0	4,238	3%	7%	5%
2nd Stage	402	567	0	969	433	604	0	1,037	8%	7%	7%
Resident	327	353	0	680	321	371	0	692	-2%	5%	2%
San Francisco	2,697	1,745	2	4,444	2,722	1,740	31	4,493	1%	0%	1%
Graduate	1,935	1,063	0	2,998	1,981	1,138	0	3,119	2%	7%	4%
1st Stage	1,704	891	0	2,595	1,748	963	0	2,711	3%	8%	4%
2nd Stage	231	172	0	403	233	175	0	408	1%	2%	1%
Resident	762	682	2	1,446	741	602	31	1,374	-3%	-12%	-5%
Santa Barbara	11,603	10,265	0	21,868	12,034	10,816	0	22,850	4%	5%	4%
Undergraduate	10,256	8,644	0	18,900	10,636	9,178	0	19,814	4%	6%	5%
Lower Division	4,909	3,842	0	8,751	4,810	3,899	0	8,709	-2%	1%	0%
Upper Division	5,339	4,802	0	10,141	5,812	5,275	0	11,087	9%	10%	9%
Postbaccalaureate	8	0	0	8	14	4	0	18	75%	n/a	125%
Graduate	1,347	1,621	0	2,968	1,398	1,638	0	3,036	4%	1%	2%
1st Stage	1,001	1,129	0	2,130	1,051	1,126	0	2,177	5%	0%	2%
2nd Stage	346	492	0	838	347	512	0	859	0%	4%	3%
Santa Cruz	8,771	7,796	48	16,615	8,817	7,907	51	16,775	1%	1%	1%
Undergraduate	8,052	7,025	48	15,125	8,104	7,104	51	15,259	1%	1%	1%
Lower Division	4,215	3,550	0	7,765	3,939	3,269	0	7,208	-7%	-8%	-7%
Upper Division	3,837	3,475	48	7,360	4,165	3,835	51	8,051	9%	10%	9%
Graduate	719	771	0	1,490	713	803	0	1,516	-1%	4%	2%
1st Stage	496	565	0	1,061	481	591	0	1,072	-3%	5%	1%
2nd Stage	223	206	0	429	232	212	0	444	4%	3%	3%
University Total	118,091	107,720	229	226,040	120,935	110,671	247	231,853	2%	3%	3%
Undergraduate	92,902	79,959	217	173,078	95,325	82,251	212	177,788	3%	3%	3%
Lower Division	39,225	31,510	47	70,782	38,420	30,407	39	68,866	-2%	-4%	-3%
Upper Division	53,444	48,379	169	101,992	56,664	51,750	173	108,587	6%	7%	6%
Postbaccalaureate	233	70	1	304	241	94	0	335	3%	34%	10%
Graduate	22,636	25,252	0	47,888	22,980	26,015	1	48,996	2%	3%	2%
1st Stage	18,470	20,345	0	38,815	18,719	20,874	1	39,594	1%	3%	2%
2nd Stage	4,166	4,907	0	9,073	4,261	5,141	0	9,402	2%	5%	4%
Resident	2,553	2,509	12	5,074	2,630	2,405	34	5,069	3%	-4%	0%

Table 1b: Enrollment by Campus, Level, and Gender: General Campus

	Fall 2008				Fall 2009				One-year change		
	Female	Male	Unk	Total	Female	Male	Unk	Total	Female	Male	Total
Berkeley	17,448	17,193	0	34,641	17,540	17,484	0	35,024	1%	2%	1%
Undergraduate	13,387	11,764	0	25,151	13,510	12,020	0	25,530	1%	2%	2%
Lower Division	4,498	3,627	0	8,125	4,359	3,434	0	7,793	-3%	-5%	-4%
Upper Division	8,889	8,137	0	17,026	9,151	8,586	0	17,737	3%	6%	4%
Graduate	4,061	5,429	0	9,490	4,030	5,464	0	9,494	-1%	1%	0%
1st Stage	3,089	4,241	0	7,330	3,052	4,260	0	7,312	-1%	0%	0%
2nd Stage	972	1,188	0	2,160	978	1,204	0	2,182	1%	1%	1%
Davis	15,986	13,233	0	29,219	16,307	13,556	0	29,863	2%	2%	2%
Undergraduate	13,621	10,588	0	24,209	13,851	10,804	0	24,655	2%	2%	2%
Lower Division	5,919	4,357	0	10,276	5,513	4,046	0	9,559	-7%	-7%	-7%
Upper Division	7,592	6,205	0	13,797	8,229	6,723	0	14,952	8%	8%	8%
Postbaccalaureate	110	26	0	136	109	35	0	144	-1%	35%	6%
Graduate	2,365	2,645	0	5,010	2,456	2,752	0	5,208	4%	4%	4%
1st Stage	1,843	2,079	0	3,922	1,926	2,123	0	4,049	5%	2%	3%
2nd Stage	522	566	0	1,088	530	629	0	1,159	2%	11%	7%
Irvine	13,229	12,865	132	26,226	13,392	12,843	110	26,345	1%	0%	0%
Undergraduate	11,567	10,377	132	22,076	11,744	10,330	110	22,184	2%	0%	0%
Lower Division	5,049	4,059	42	9,150	4,688	3,599	26	8,313	-7%	-11%	-9%
Upper Division	6,438	6,282	90	12,810	6,965	6,695	84	13,744	8%	7%	7%
Postbaccalaureate	80	36	0	116	91	36	0	127	14%	0%	9%
Graduate	1,662	2,488	0	4,150	1,648	2,513	0	4,161	-1%	1%	0%
1st Stage	1,315	1,999	0	3,314	1,308	1,995	0	3,303	-1%	0%	0%
2nd Stage	347	489	0	836	340	518	0	858	-2%	6%	3%
Los Angeles	18,591	17,036	0	35,627	18,709	17,227	0	35,936	1%	1%	1%
Undergraduate	14,514	11,820	0	26,334	14,616	11,826	0	26,442	1%	0%	0%
Lower Division	4,592	3,472	0	8,064	4,632	3,308	0	7,940	1%	-5%	-2%
Upper Division	9,922	8,348	0	18,270	9,984	8,518	0	18,502	1%	2%	1%
Graduate	4,077	5,216	0	9,293	4,093	5,401	0	9,494	0%	4%	2%
1st Stage	3,479	4,500	0	7,979	3,501	4,639	0	8,140	1%	3%	2%
2nd Stage	598	716	0	1,314	592	762	0	1,354	-1%	6%	3%
Merced	1,252	1,461	5	2,718	1,637	1,765	12	3,414	31%	21%	26%
Undergraduate	1,184	1,345	5	2,534	1,554	1,624	12	3,190	31%	21%	26%
Lower Division	745	841	3	1,589	1,048	1,044	9	2,101	41%	24%	32%
Upper Division	439	504	2	945	506	580	3	1,089	15%	15%	15%
Graduate	68	116	0	184	83	141	0	224	22%	22%	22%
1st Stage	59	97	0	156	68	111	0	179	15%	14%	15%
2nd Stage	9	19	0	28	15	30	0	45	67%	58%	61%
Riverside	9,255	8,738	32	18,025	9,949	9,396	39	19,384	7%	8%	8%
Undergraduate	8,178	7,542	32	15,752	8,852	8,151	39	17,042	8%	8%	8%
Lower Division	4,581	4,186	2	8,769	4,997	4,394	4	9,395	9%	5%	7%
Upper Division	3,562	3,348	29	6,939	3,828	3,738	35	7,601	7%	12%	10%
Postbaccalaureate	35	8	1	44	27	19	0	46	-23%	138%	5%
Graduate	1,077	1,196	0	2,273	1,097	1,245	0	2,342	2%	4%	3%
1st Stage	823	879	0	1,702	794	912	0	1,706	-4%	4%	0%
2nd Stage	254	317	0	571	303	333	0	636	19%	5%	11%

Table 1b: Enrollment by Campus, Level, and Gender: General Campus

	Fall 2008				Fall 2009				One-year change		
	Female	Male	Unk	Total	Female	Male	Unk	Total	Female	Male	Total
San Diego	13,239	13,196	0	26,435	13,575	13,750	0	27,325	3%	4%	3%
Undergraduate	11,743	10,775	0	22,518	12,004	11,139	0	23,143	2%	3%	3%
Lower Division	4,479	3,525	0	8,004	4,204	3,360	0	7,564	-6%	-5%	-5%
Upper Division	7,264	7,250	0	14,514	7,800	7,779	0	15,579	7%	7%	7%
Graduate	1,496	2,421	0	3,917	1,571	2,611	0	4,182	5%	8%	7%
1st Stage	1,156	1,908	0	3,064	1,209	2,061	0	3,270	5%	8%	7%
2nd Stage	340	513	0	853	362	550	0	912	6%	7%	7%
Santa Barbara	11,603	10,265	0	21,868	12,034	10,816	0	22,850	4%	5%	4%
Undergraduate	10,256	8,644	0	18,900	10,636	9,178	0	19,814	4%	6%	5%
Lower Division	4,909	3,842	0	8,751	4,810	3,899	0	8,709	-2%	1%	0%
Upper Division	5,339	4,802	0	10,141	5,812	5,275	0	11,087	9%	10%	9%
Postbaccalaureate	8	0	0	8	14	4	0	18	75%	n/a	125%
Graduate	1,347	1,621	0	2,968	1,398	1,638	0	3,036	4%	1%	2%
1st Stage	1,001	1,129	0	2,130	1,051	1,126	0	2,177	5%	0%	2%
2nd Stage	346	492	0	838	347	512	0	859	0%	4%	3%
Santa Cruz	8,771	7,796	48	16,615	8,817	7,907	51	16,775	1%	1%	1%
Undergraduate	8,052	7,025	48	15,125	8,104	7,104	51	15,259	1%	1%	1%
Lower Division	4,215	3,550	0	7,765	3,939	3,269	0	7,208	-7%	-8%	-7%
Upper Division	3,837	3,475	48	7,360	4,165	3,835	51	8,051	9%	10%	9%
Graduate	719	771	0	1,490	713	803	0	1,516	-1%	4%	2%
1st Stage	496	565	0	1,061	481	591	0	1,072	-3%	5%	1%
2nd Stage	223	206	0	429	232	212	0	444	4%	3%	3%
University Total	109,374	101,783	217	211,374	111,960	104,744	212	216,916	2%	3%	3%
Undergraduate	92,502	79,880	217	172,599	94,871	82,176	212	177,259	3%	3%	3%
Lower Division	38,987	31,459	47	70,493	38,190	30,353	39	68,582	-2%	-4%	-3%
Upper Division	53,282	48,351	169	101,802	56,440	51,729	173	108,342	6%	7%	6%
Postbaccalaureate	233	70	1	304	241	94	0	335	3%	34%	10%
Graduate	16,872	21,903	0	38,775	17,089	22,568	0	39,657	1%	3%	2%
1st Stage	13,261	17,397	0	30,658	13,390	17,818	0	31,208	1%	2%	2%
2nd Stage	3,611	4,506	0	8,117	3,699	4,750	0	8,449	2%	5%	4%

Table 1c: Enrollment by Campus, Level, and Gender: Health Sciences

	Fall 2008				Fall 2009				One-year change		
	Female	Male	Unk	Total	Female	Male	Unk	Total	Female	Male	Total
Berkeley	542	226	0	768	613	206	0	819	13%	-9%	7%
Graduate	536	219	0	755	604	202	0	806	13%	-8%	7%
1st Stage	496	193	0	689	559	180	0	739	13%	-7%	7%
2nd Stage	40	26	0	66	45	22	0	67	13%	-15%	2%
Resident	6	7	0	13	9	4	0	13	50%	-43%	0%
Davis	1,334	873	0	2,207	1,426	864	0	2,290	7%	-1%	4%
Undergraduate	85	30	0	115	87	28	0	115	2%	-7%	0%
Lower Division	85	30	0	115	87	28	0	115	2%	-7%	0%
Graduate	834	400	0	1,234	870	399	0	1,269	4%	0%	3%
1st Stage	784	368	0	1,152	815	365	0	1,180	4%	-1%	2%
2nd Stage	50	32	0	82	55	34	0	89	10%	6%	9%
Resident	415	443	0	858	469	437	0	906	13%	-1%	6%
Irvine	738	657	10	1,405	780	663	4	1,447	6%	1%	3%
Undergraduate	135	27	0	162	145	24	0	169	7%	-11%	4%
Lower Division	67	10	0	77	60	12	0	72	-10%	20%	-6%
Upper Division	68	17	0	85	85	12	0	97	25%	-29%	14%
Graduate	292	304	0	596	318	309	1	628	9%	2%	5%
1st Stage	250	273	0	523	274	277	1	552	10%	1%	6%
2nd Stage	42	31	0	73	44	32	0	76	5%	3%	4%
Resident	311	326	10	647	317	330	3	650	2%	1%	0%
Los Angeles	2,442	1,581	0	4,023	2,464	1,584	0	4,048	1%	0%	1%
Undergraduate	180	22	0	202	222	23	0	245	23%	5%	21%
Lower Division	86	11	0	97	83	14	0	97	-3%	27%	0%
Upper Division	94	11	0	105	139	9	0	148	48%	-18%	41%
Graduate	1,530	861	0	2,391	1,469	900	0	2,369	-4%	5%	-1%
1st Stage	1,400	775	0	2,175	1,355	826	0	2,181	-3%	7%	0%
2nd Stage	130	86	0	216	114	74	0	188	-12%	-14%	-13%
Resident	732	698	0	1,430	773	661	0	1,434	6%	-5%	0%
Riverside	16	38	0	54	22	33	0	55	38%	-13%	2%
Graduate	16	38	0	54	22	33	0	55	38%	-13%	2%
1st Stage	16	38	0	54	22	33	0	55	38%	-13%	2%
San Diego	948	817	0	1,765	948	837	0	1,785	0%	2%	1%
Graduate	621	464	0	1,085	627	466	0	1,093	1%	0%	1%
1st Stage	559	410	0	969	556	412	0	968	-1%	0%	0%
2nd Stage	62	54	0	116	71	54	0	125	15%	0%	8%
Resident	327	353	0	680	321	371	0	692	-2%	5%	2%
San Francisco	2,697	1,745	2	4,444	2,722	1,740	31	4,493	1%	0%	1%
Graduate	1,935	1,063	0	2,998	1,981	1,138	0	3,119	2%	7%	4%
1st Stage	1,704	891	0	2,595	1,748	963	0	2,711	3%	8%	4%
2nd Stage	231	172	0	403	233	175	0	408	1%	2%	1%
Resident	762	682	2	1,446	741	602	31	1,374	-3%	-12%	-5%
University Total	8,717	5,937	12	14,666	8,975	5,927	35	14,937	3%	0%	2%
Undergraduate	400	79	0	479	454	75	0	529	14%	-5%	10%
Lower Division	238	51	0	289	230	54	0	284	-3%	6%	-2%
Upper Division	162	28	0	190	224	21	0	245	38%	-25%	29%
Graduate	5,764	3,349	0	9,113	5,891	3,447	1	9,339	2%	3%	2%
1st Stage	5,209	2,948	0	8,157	5,329	3,056	1	8,386	2%	4%	3%
2nd Stage	555	401	0	956	562	391	0	953	1%	-2%	0%
Resident	2,553	2,509	12	5,074	2,630	2,405	34	5,069	3%	-4%	0%

Table 2: Enrollment by Campus, Registration Status, and Level

	Undergraduate			Graduate		
	Fall 2008	Fall 2009	One-year change	Fall 2008	Fall 2009	One-year change
Berkeley	25,151	25,530	2%	10,245	10,300	1%
New	6,280	6,570	5%	2,802	2,887	3%
Continuing/Returning	18,871	18,960	0%	7,443	7,413	0%
Davis	24,324	24,770	2%	6,244	6,477	4%
New	7,034	6,793	-3%	1,496	1,656	11%
Continuing/Returning	17,290	17,977	4%	4,748	4,821	2%
Irvine	22,238	22,353	1%	4,746	4,789	1%
New	6,054	5,930	-2%	1,349	1,392	3%
Continuing/Returning	16,184	16,423	1%	3,397	3,397	0%
Los Angeles	26,536	26,687	1%	11,684	11,863	2%
New	7,955	7,707	-3%	3,706	3,732	1%
Continuing/Returning	18,581	18,980	2%	7,978	8,131	2%
Merced	2,534	3,190	26%	184	224	22%
New	1,064	1,272	20%	66	69	5%
Continuing/Returning	1,470	1,918	30%	118	155	31%
Riverside	15,752	17,042	8%	2,327	2,397	3%
New	5,327	5,295	-1%	744	716	-4%
Continuing/Returning	10,425	11,747	13%	1,583	1,681	6%
San Diego	22,518	23,143	3%	5,002	5,275	5%
New	6,169	5,691	-8%	1,355	1,569	16%
Continuing/Returning	16,349	17,452	7%	3,647	3,706	2%
San Francisco	0	0	n/a	2,998	3,119	4%
New	0	0	n/a	892	912	2%
Continuing/Returning	0	0	n/a	2,106	2,207	5%
Santa Barbara	18,900	19,814	5%	2,968	3,036	2%
New	5,997	6,478	8%	779	794	2%
Continuing/Returning	12,903	13,336	3%	2,189	2,242	2%
Santa Cruz	15,125	15,259	1%	1,490	1,516	2%
New	4,840	4,088	-16%	312	324	4%
Continuing/Returning	10,285	11,171	9%	1,178	1,192	1%
University Total	173,078	177,788	3%	47,888	48,996	2%
New	50,720	49,824	-2%	13,501	14,051	4%
Continuing/Returning	122,358	127,964	5%	34,387	34,945	2%

Excludes health sciences residents.

Figure 3: New Undergraduate Students by Campus, 2005-2009

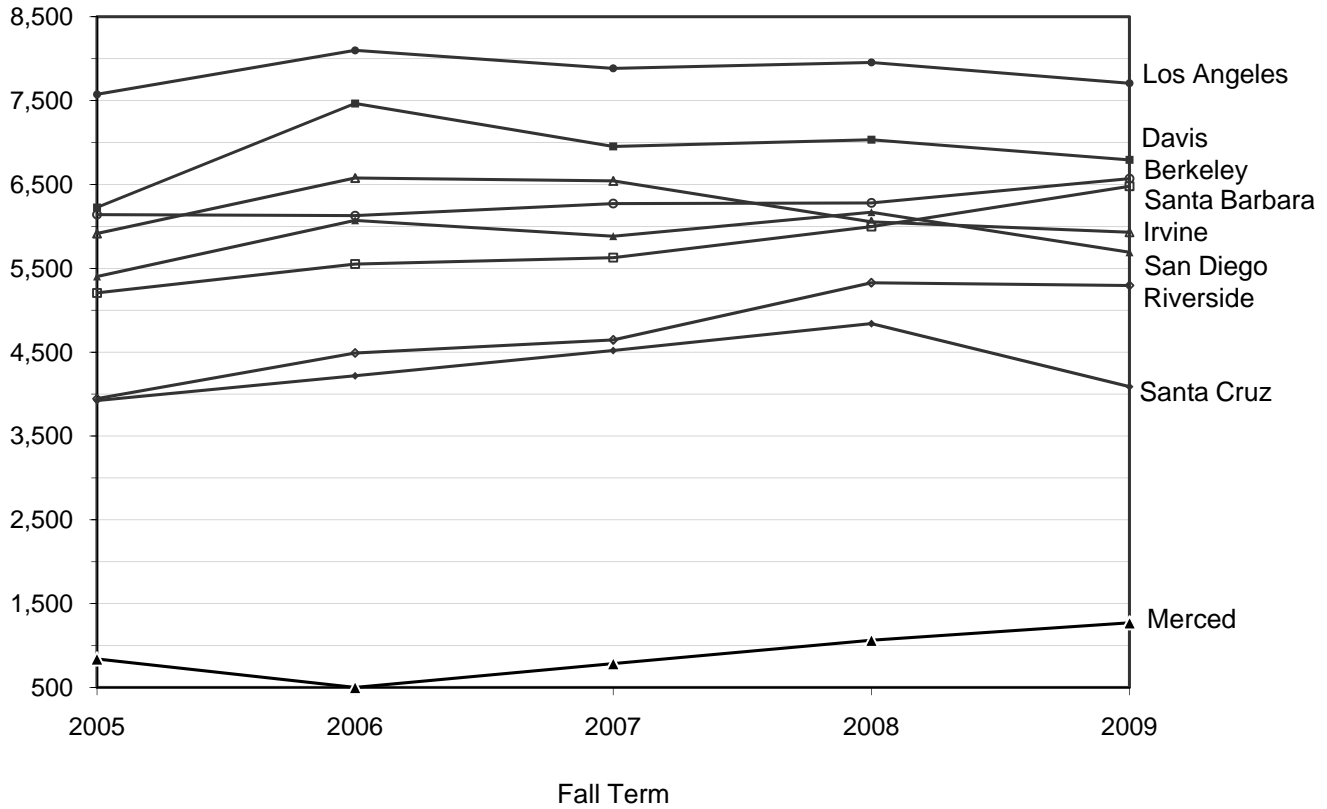


Figure 4: New Graduate Students by Campus, 2005-2009

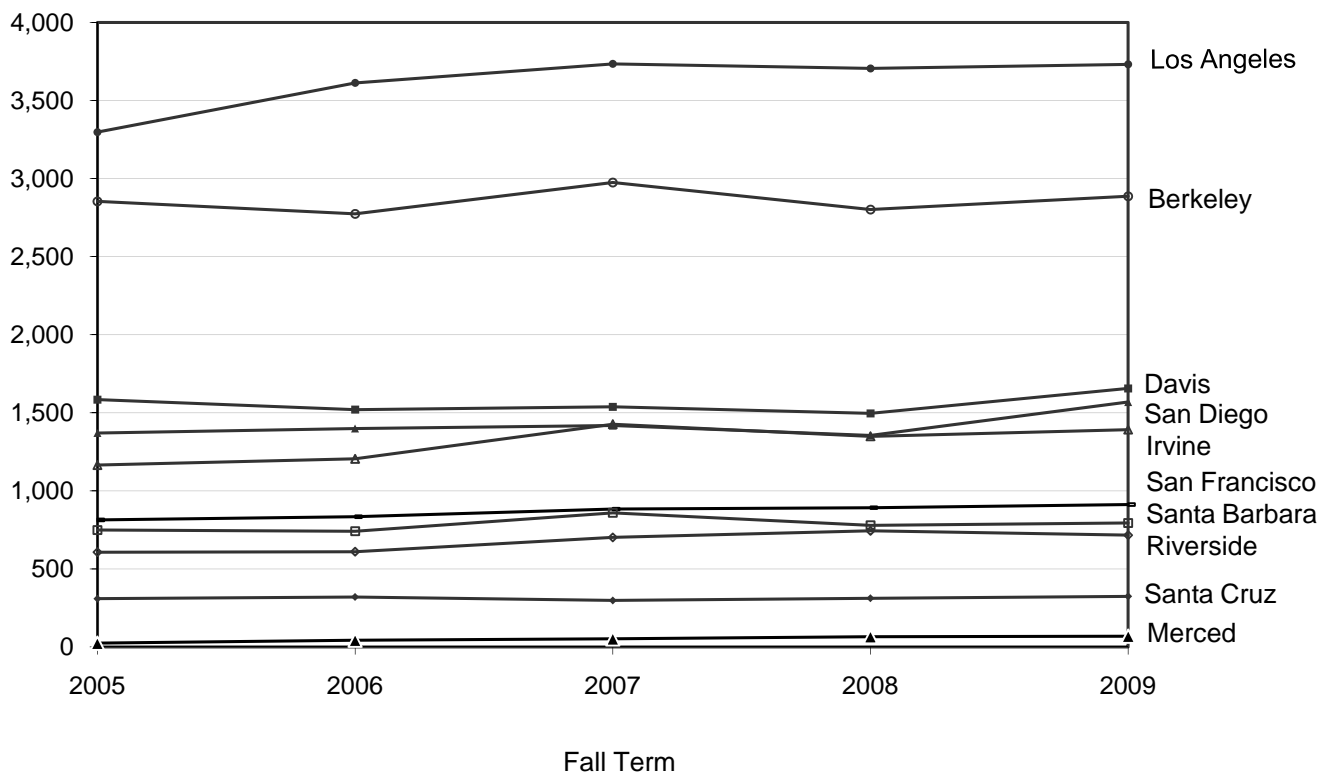


Table 3: General Campus Enrollment by Campus, Full-time/Part-time Status, Gender, and Level

	Undergraduate			Graduate		
	Fall 2008	Fall 2009	One-year change	Fall 2008	Fall 2009	One-year change
University Total	172,599	177,259	3%	38,775	39,657	2%
Full-Time	166,110	170,877	3%	36,949	37,775	2%
Female	89,221	91,766	3%	16,295	16,479	1%
Male	76,681	78,913	3%	20,654	21,296	3%
Unknown	208	198	-5%	0	0	n/a
Part-Time	6,489	6,382	-2%	1,826	1,882	3%
Female	3,281	3,105	-5%	577	610	6%
Male	3,199	3,263	2%	1,249	1,272	2%
Unknown	9	14	56%	0	0	n/a
Berkeley	25,151	25,530	2%	9,490	9,494	0%
Full-Time	24,385	24,797	2%	8,809	8,866	1%
Part-Time	766	733	-4%	681	628	-8%
Davis	24,209	24,655	2%	5,010	5,208	4%
Full-Time	22,007	22,645	3%	4,412	4,574	4%
Part-Time	2,202	2,010	-9%	598	634	6%
Irvine	22,076	22,184	0%	4,150	4,161	0%
Full-Time	21,440	21,664	1%	4,063	4,090	1%
Part-Time	636	520	-18%	87	71	-18%
Los Angeles	26,334	26,442	0%	9,293	9,494	2%
Full-Time	25,412	25,511	0%	9,050	9,188	2%
Part-Time	922	931	1%	243	306	26%
Merced	2,534	3,190	26%	184	224	22%
Full-Time	2,525	3,163	25%	181	220	22%
Part-Time	9	27	200%	3	4	33%
Riverside	15,752	17,042	8%	2,273	2,342	3%
Full-Time	15,356	16,537	8%	2,227	2,301	3%
Part-Time	396	505	28%	46	41	-11%
San Diego	22,518	23,143	3%	3,917	4,182	7%
Full-Time	21,859	22,427	3%	3,821	4,066	6%
Part-Time	659	716	9%	96	116	21%
Santa Barbara	18,900	19,814	5%	2,968	3,036	2%
Full-Time	18,436	19,321	5%	2,958	3,025	2%
Part-Time	464	493	6%	10	11	10%
Santa Cruz	15,125	15,259	1%	1,490	1,516	2%
Full-Time	14,690	14,812	1%	1,428	1,445	1%
Part-Time	435	447	3%	62	71	15%

Table 4: General Campus Enrollment by Campus, Discipline, and Level

	Undergraduate			Graduate		
	Fall 2008 Headcount	Fall 2009 Headcount	Fall 2009 Distribution	Fall 2008 Headcount	Fall 2009 Headcount	Fall 2009 Distribution
Berkeley	25,151	25,530	100%	9,490	9,494	100%
Agriculture, Natural Resources & Conservation	605	726	3%	265	264	3%
Architecture & Environmental Design	588	555	2%	317	335	4%
Area, Ethnic, Cultural & Gender Studies	357	361	1%	138	137	1%
Biological Sciences	1,547	1,581	6%	559	614	6%
Business & Management	517	530	2%	1,480	1,493	16%
Communication, Journalism & Related Programs	251	271	1%	106	103	1%
Computer & Information Sciences	98	104	0%	319	317	3%
Education	0	0	0%	447	422	4%
Engineering	3,102	3,197	13%	1,526	1,450	15%
Fine & Applied Arts	435	439	2%	143	150	2%
Foreign Languages & Literature	319	316	1%	377	375	4%
Interdisciplinary Studies	580	601	2%	153	103	1%
Law	153	136	1%	989	1,030	11%
Letters	815	767	3%	286	280	3%
Mathematics	260	257	1%	222	207	2%
Multiple Majors	1,444	1,488	6%	151	142	1%
Physical Sciences	579	688	3%	708	806	8%
Psychology	507	461	2%	110	108	1%
Public Administration & Social Services	181	211	1%	378	373	4%
Public Health	193	266	1%	0	0	0%
Social Sciences	2,576	2,525	10%	816	785	8%
Undeclared/Unknown	10,044	10,050	39%	0	0	0%
Davis	24,209	24,655	100%	5,010	5,208	100%
Agriculture, Natural Resources & Conservation	3,240	3,361	14%	277	305	6%
Architecture & Environmental Design	334	370	2%	25	27	1%
Area, Ethnic, Cultural & Gender Studies	220	211	1%	56	50	1%
Biological Sciences	5,802	5,853	24%	735	735	14%
Business & Management	0	0	0%	504	545	10%
Communication, Journalism & Related Programs	563	572	2%	11	13	0%
Computer & Information Sciences	199	212	1%	158	162	3%
Criminology	0	0	0%	76	82	2%
Education	137	169	1%	254	260	5%
Engineering	2,622	2,698	11%	726	735	14%
Family & Consumer Sciences/Human Sciences	472	507	2%	45	55	1%
Fine & Applied Arts	1,097	1,012	4%	81	91	2%
Foreign Languages & Literature	365	387	2%	132	131	3%
Health Professions	0	0	0%	12	22	0%
Interdisciplinary Studies	649	631	3%	135	136	3%
Law	0	0	0%	589	623	12%
Letters	1,096	1,019	4%	146	138	3%
Mathematics	433	421	2%	135	146	3%
Multiple Majors	736	916	4%	42	49	1%
Physical Sciences	1,054	1,015	4%	412	440	8%
Psychology	1,453	1,484	6%	92	89	2%
Social Sciences	3,730	3,809	15%	367	374	7%
Undeclared/Unknown	7	8	0%	0	0	0%

Table 4: General Campus Enrollment by Campus, Discipline, and Level

	Undergraduate			Graduate		
	Fall 2008 Headcount	Fall 2009 Headcount	Fall 2009 Distribution	Fall 2008 Headcount	Fall 2009 Headcount	Fall 2009 Distribution
Irvine	22,076	22,184	100%	4,150	4,161	100%
Agriculture, Natural Resources & Conservation	0	2	0%	5	3	0%
Architecture & Environmental Design	10	1	0%	77	84	2%
Area, Ethnic, Cultural & Gender Studies	112	132	1%	8	10	0%
Biological Sciences	4,262	4,273	19%	298	304	7%
Business & Management	1,774	1,976	9%	859	833	20%
Communication, Journalism & Related Programs	247	184	1%	0	0	0%
Computer & Information Sciences	652	651	3%	390	395	9%
Education	116	127	1%	194	176	4%
Engineering	2,304	2,283	10%	605	626	15%
Fine & Applied Arts	1,196	1,174	5%	202	186	4%
Foreign Languages & Literature	150	152	1%	142	130	3%
Interdisciplinary Studies	1,947	1,864	8%	35	23	1%
Law	0	0		0	60	1%
Letters	590	653	3%	152	151	4%
Mathematics	289	297	1%	132	127	3%
Multiple Majors	1,146	1,236	6%	3	0	0%
Pharmacy	21	32	0%	0	0	0%
Physical Sciences	675	670	3%	386	388	9%
Psychology	1,887	1,835	8%	129	118	3%
Public Administration & Social Services	0	0	0%	29	30	1%
Public Health	431	554	2%	0	16	0%
Social Sciences	3,067	2,985	13%	504	501	12%
Undeclared/Unknown	1,200	1,103	5%	0	0	0%
Los Angeles	26,334	26,442	100%	9,293	9,494	100%
Agriculture, Natural Resources & Conservation	134	201	1%	0	0	0%
Architecture & Environmental Design	43	47	0%	313	331	3%
Area, Ethnic, Cultural & Gender Studies	527	588	2%	122	127	1%
Biological Sciences	4,595	5,170	20%	357	353	4%
Business & Management	1,452	1,289	5%	1,743	1,818	19%
Computer & Information Sciences	272	288	1%	389	387	4%
Education	0	0	0%	713	735	8%
Engineering	2,743	2,899	11%	1,158	1,288	14%
Fine & Applied Arts	1,524	1,531	6%	646	614	6%
Foreign Languages & Literature	647	692	3%	382	389	4%
Interdisciplinary Studies	1,204	658	2%	35	34	0%
Law	0	0	0%	1,047	1,065	11%
Letters	1,966	1,941	7%	175	168	2%
Library Science	0	0	0%	175	166	2%
Mathematics	847	923	3%	235	244	3%
Multiple Majors	336	310	1%	90	75	1%
Physical Sciences	867	914	3%	464	482	5%
Psychology	2,335	2,340	9%	187	179	2%
Public Administration & Social Services	0	0	0%	312	308	3%
Social Sciences	6,385	6,402	24%	689	693	7%
Undeclared/Unknown	457	249	1%	61	38	0%

Table 4: General Campus Enrollment by Campus, Discipline, and Level

	Undergraduate			Graduate		
	Fall 2008 Headcount	Fall 2009 Headcount	Fall 2009 Distribution	Fall 2008 Headcount	Fall 2009 Headcount	Fall 2009 Distribution
Merced	2,534	3,190	100%	184	224	100%
Agriculture, Natural Resources & Conservation	0	0	0%	28	32	14%
Biological Sciences	638	770	24%	41	45	20%
Business & Management	175	185	6%	0	0	0%
Engineering	446	515	16%	41	50	22%
Foreign Languages & Literature	51	73	2%	0	0	0%
Interdisciplinary Studies	55	83	3%	22	27	12%
Mathematics	36	56	2%	12	19	8%
Multiple Majors	10	21	1%	0	0	0%
Physical Sciences	98	168	5%	20	30	13%
Psychology	326	368	12%	0	0	0%
Social Sciences	253	299	9%	20	21	9%
Undeclared/Unknown	446	652	20%	0	0	0%
Riverside	15,752	17,042	100%	2,273	2,342	100%
Agriculture, Natural Resources & Conservation	134	140	1%	30	35	1%
Area, Ethnic, Cultural & Gender Studies	108	107	1%	2	6	0%
Biological Sciences	3,088	3,621	21%	343	348	15%
Business & Management	2,691	2,584	15%	151	172	7%
Computer & Information Sciences	271	248	1%	137	152	6%
Education	44	46	0%	186	173	7%
Engineering	1,208	1,459	9%	279	285	12%
Fine & Applied Arts	565	676	4%	89	88	4%
Foreign Languages & Literature	238	256	2%	54	58	2%
Interdisciplinary Studies	568	444	3%	23	0	0%
Letters	1,033	1,100	6%	231	247	11%
Mathematics	289	313	2%	120	113	5%
Multiple Majors	255	314	2%	0	0	0%
Physical Sciences	261	307	2%	246	259	11%
Psychology	1,201	1,516	9%	69	87	4%
Public Administration & Social Services	35	54	0%	0	0	0%
Social Sciences	2,075	2,234	13%	313	319	14%
Undeclared/Unknown	1,688	1,623	10%	0	0	0%
San Diego	22,518	23,143	100%	3,917	4,182	100%
Agriculture, Natural Resources & Conservation	181	191	1%	0	0	0%
Area, Ethnic, Cultural & Gender Studies	175	164	1%	53	56	1%
Biological Sciences	5,461	5,655	24%	346	340	8%
Business & Management	897	877	4%	249	277	7%
Communication, Journalism & Related Programs	803	841	4%	49	55	1%
Computer & Information Sciences	431	561	2%	230	242	6%
Education	41	45	0%	164	160	4%
Engineering	3,379	3,475	15%	928	1,065	25%
Family & Consumer Sciences/Human Sciences	271	263	1%	0	0	0%
Fine & Applied Arts	723	695	3%	238	253	6%
Foreign Languages & Literature	137	140	1%	33	33	1%
Interdisciplinary Studies	1,301	1,335	6%	47	43	1%
Law	0	0	0%	20	33	1%
Letters	646	562	2%	137	151	4%
Marine Science	0	0	0%	243	262	6%
Mathematics	451	435	2%	113	124	3%
Multiple Majors	594	718	3%	0	0	0%
Physical Sciences	1312	1261	5%	377	407	10%
Psychology	1379	1460	6%	59	61	1%
Social Sciences	3551	3703	16%	631	620	15%
Undeclared/Unknown	785	762	3%	0	0	0%

Table 4: General Campus Enrollment by Campus, Discipline, and Level

	Undergraduate			Graduate		
	Fall 2008 Headcount	Fall 2009 Headcount	Fall 2009 Distribution	Fall 2008 Headcount	Fall 2009 Headcount	Fall 2009 Distribution
Santa Barbara	18,900	19,814	100%	2,968	3,036	100%
Agriculture, Natural Resources & Conservation	383	523	3%	184	215	7%
Area, Ethnic, Cultural & Gender Studies	219	214	1%	42	44	1%
Biological Sciences	2,264	2,451	12%	177	176	6%
Business & Management	2,154	2,165	11%	0	0	0%
Communication, Journalism & Related Programs	1,108	1,148	6%	36	37	1%
Computer & Information Sciences	302	299	2%	146	139	5%
Education	4	14	0%	307	323	11%
Engineering	911	907	5%	517	389	13%
Fine & Applied Arts	1,120	1,066	5%	163	166	5%
Foreign Languages & Literature	463	489	2%	100	100	3%
Interdisciplinary Studies	571	626	3%	51	73	2%
Law	57	4	0%	0	0	0%
Letters	839	863	4%	198	192	6%
Mathematics	361	375	2%	93	99	3%
Multiple Majors	1,098	1,157	6%	48	41	1%
Physical Sciences	490	560	3%	314	439	14%
Psychology	1,663	1,839	9%	148	144	5%
Social Sciences	2,658	2,952	15%	444	456	15%
Undeclared/Unknown	2,235	2,162	11%	0	3	0%
Santa Cruz	15,125	15,259	100%	1,490	1,516	100%
Agriculture, Natural Resources & Conservation	410	454	3%	42	38	3%
Area, Ethnic, Cultural & Gender Studies	258	243	2%	0	0	0%
Biological Sciences	1,050	1,204	8%	161	165	11%
Business & Management	502	566	4%	0	0	0%
Communication, Journalism & Related Programs	0	0	0%	10	10	1%
Computer & Information Sciences	244	300	2%	127	123	8%
Education	0	0	0%	136	133	9%
Engineering	218	262	2%	141	168	11%
Fine & Applied Arts	954	936	6%	53	59	4%
Foreign Languages & Literature	192	184	1%	24	23	2%
Interdisciplinary Studies	85	8	0%	43	38	3%
Law	84	79	1%	0	0	0%
Letters	464	463	3%	99	104	7%
Mathematics	100	103	1%	64	68	4%
Multiple Majors	463	544	4%	0	0	0%
Physical Sciences	282	323	2%	286	283	19%
Psychology	833	941	6%	63	62	4%
Public Administration & Social Services	124	132	1%	0	0	0%
Social Sciences	892	1,045	7%	241	242	16%
Undeclared/Unknown	7,970	7,472	49%	0	0	0%

Table 5: Health Sciences Enrollment by Campus, Discipline, and Level

	Undergraduate			Graduate			Resident			Total		
	Fall 2008	Fall 2009	One-year Chge	Fall 2008	Fall 2009	One-year Chge	Fall 2008	Fall 2009	One-year Chge	Fall 2008	Fall 2009	One-year Chge
Berkeley	0	0	n/a	755	806	7%	13	13	0%	768	819	7%
Biological Sciences	0	0	n/a	127	132	4%	0	0	n/a	127	132	4%
Health Professions	0	0	n/a	22	19	-14%	0	0	n/a	22	19	-14%
Interdisciplinary/Multiple	0	0	n/a	52	57	10%	0	0	n/a	52	57	10%
Optometry	0	0	n/a	241	250	4%	13	13	0%	254	263	4%
Public Health	0	0	n/a	313	348	11%	0	0	n/a	313	348	11%
Davis	115	115	0%	1,234	1,269	3%	858	906	6%	2,207	2,290	4%
Biological Sciences	0	0	n/a	200	254	27%	0	0	n/a	200	254	27%
Health Professions	0	0	n/a	10	13	30%	0	0	n/a	10	13	30%
Interdisciplinary/Multiple	0	0	n/a	86	39	-55%	0	0	n/a	86	39	-55%
Medical Sciences	0	0	n/a	391	401	3%	749	805	7%	1,140	1,206	6%
Nursing	115	115	0%	0	0	n/a	0	0	n/a	115	115	0%
Public Health	0	0	n/a	20	25	25%	0	0	n/a	20	25	25%
Veterinary Medicine	0	0	n/a	527	537	2%	109	101	-7%	636	638	0%
Irvine	162	169	4%	596	628	5%	647	650	0%	1,405	1,447	3%
Biological Sciences	0	0	n/a	155	154	-1%	0	0	n/a	155	154	-1%
Health Professions	0	0	n/a	11	12	9%	0	0	n/a	11	12	9%
Interdisciplinary/Multiple	0	0	n/a	61	61	0%	0	0	n/a	61	61	0%
Medical Sciences	0	0	n/a	369	389	5%	647	650	0%	1,016	1,039	2%
Nursing	162	169	4%	0	12	n/a	0	0	n/a	162	181	12%
Los Angeles	202	245	21%	2,391	2,369	-1%	1,430	1,434	0%	4,023	4,048	1%
Agriculture, Nat. Res	0	0	n/a	25	21	-16%	0	0	n/a	25	21	-16%
Biological Sciences	0	0	n/a	355	413	16%	0	0	n/a	355	413	16%
Dental Sciences	0	0	n/a	381	383	1%	100	103	3%	481	486	1%
Health Professions	0	0	n/a	17	15	-12%	0	0	n/a	17	15	-12%
Interdisciplinary/Multiple	0	0	n/a	155	80	-48%	0	0	n/a	155	80	-48%
Medical Sciences	0	0	n/a	592	630	6%	1,330	1,331	0%	1,922	1,961	2%
Nursing	202	245	21%	363	343	-6%	0	0	n/a	565	588	4%
Public Health	0	0	n/a	503	484	-4%	0	0	n/a	503	484	-4%
Riverside	0	0	n/a	54	55	2%	0	0	n/a	54	55	2%
Medical Sciences	0	0	n/a	54	55	2%	0	0	n/a	54	55	2%
San Diego	0	0	n/a	1,085	1,093	1%	680	692	2%	1,765	1,785	1%
Biological Sciences	0	0	n/a	205	276	35%	0	0	n/a	205	276	35%
Business & Mgmt.	0	0	n/a	13	16	23%	0	0	n/a	13	16	23%
Health Professions	0	0	n/a	22	32	45%	0	0	n/a	22	32	45%
Interdisciplinary/Multiple	0	0	n/a	76	0	n/a	0	0	n/a	76	0	n/a
Medical Sciences	0	0	n/a	513	510	-1%	655	664	1%	1,168	1,174	1%
Pharmacy	0	0	n/a	231	234	1%	25	28	12%	256	262	2%
Psychology	0	0	n/a	24	24	0%	0	0	n/a	24	24	0%
Public Health	0	0	n/a	1	1	0%	0	0	n/a	1	1	0%

Table 5: Health Sciences Enrollment by Campus, Discipline, and Level

	Undergraduate			Graduate			Resident			Total		
	Fall 2008	Fall 2009	One-year Chge	Fall 2008	Fall 2009	One-year Chge	Fall 2008	Fall 2009	One-year Chge	Fall 2008	Fall 2009	One-year Chge
San Francisco	0	0	n/a	2,998	3,119	4%	1,446	1,374	-5%	4,444	4,493	1%
Biological Sciences	0	0	n/a	405	494	22%	0	0	n/a	405	494	22%
Computer & Info Sci.	0	0	n/a	33	31	-6%	0	0	n/a	33	31	-6%
Dental Sciences	0	0	n/a	426	431	1%	37	25	-32%	463	456	-2%
Engineering	0	0	n/a	65	73	12%	0	0	n/a	65	73	12%
Health Professions	0	0	n/a	86	100	16%	0	0	n/a	86	100	16%
Interdisciplinary/Multiple	0	0	n/a	85	0	n/a	0	0	n/a	85	0	n/a
Medical Sciences	0	0	n/a	599	631	5%	1,389	1,325	-5%	1,988	1,956	-2%
Nursing	0	0	n/a	667	720	8%	0	0	n/a	667	720	8%
Pharmacy	0	0	n/a	585	585	0%	20	24	20%	605	609	1%
Public Health	0	0	n/a	7	18	157%	0	0	n/a	7	18	157%
Social Sciences	0	0	n/a	40	36	-10%	0	0	n/a	40	36	-10%
University Total	479	529	10%	9,113	9,339	2%	5,074	5,069	0%	14,666	14,937	2%
Agriculture, Nat. Res.	0	0	n/a	25	21	-16%	0	0	n/a	25	21	-16%
Biological Sciences	0	0	n/a	1,447	1,723	19%	0	0	n/a	1,447	1,723	19%
Business & Mgmt.	0	0	n/a	13	16	23%	0	0	n/a	13	16	23%
Computer & Info Sci .	0	0	n/a	33	31	-6%	0	0	n/a	33	31	-6%
Dental Sciences	0	0	n/a	807	814	1%	137	128	-7%	944	942	0%
Engineering	0	0	n/a	65	73	12%	0	0	n/a	65	73	12%
Health Professions	0	0	n/a	168	191	14%	0	0	n/a	168	191	14%
Interdisciplinary/Multiple	0	0	n/a	515	237	-54%	0	0	n/a	515	237	-54%
Medical Sciences	0	0	n/a	2,518	2,616	4%	4,770	4,775	0%	7,288	7,391	1%
Nursing	479	529	10%	1,030	1,075	4%	0	0	n/a	1,509	1,604	6%
Optometry	0	0	n/a	241	250	4%	13	13	0%	254	263	4%
Pharmacy	0	0	n/a	816	819	0%	45	52	16%	861	871	1%
Psychology	0	0	n/a	24	24	0%	0	0	n/a	24	24	0%
Public Health	0	0	n/a	844	876	4%	0	0	n/a	844	876	4%
Social Sciences	0	0	n/a	40	36	-10%	0	0	n/a	40	36	-10%
Veterinary Medicine	0	0	n/a	527	537	2%	109	101	-7%	636	638	0%

Table 6: Enrollment by Campus, Residency Status, and Level

	Fall 2008			Fall 2009			One-year change		
	Ug	Gr	Total	Ug	Gr	Total	Ug	Gr	Total
Berkeley	25,151	9,210	34,361	25,530	9,246	34,776	2%	0%	1%
California Resident	22,532	6,410	28,942	22,633	6,402	29,035	0%	0%	0%
Non-Resident Domestic	1,652	1,178	2,830	1,615	1,255	2,870	-2%	7%	1%
Non-Resident International	967	1,622	2,589	1,282	1,589	2,871	33%	-2%	11%
Davis	24,324	5,758	30,082	24,770	5,947	30,717	2%	3%	2%
California Resident	23,395	4,474	27,869	23,773	4,568	28,341	2%	2%	2%
Non-Resident Domestic	543	392	935	548	492	1,040	1%	26%	11%
Non-Resident International	386	892	1,278	449	887	1,336	16%	-1%	5%
Irvine	22,238	4,074	26,312	22,353	4,127	26,480	1%	1%	1%
California Resident	21,267	2,860	24,127	21,381	2,975	24,356	1%	4%	1%
Non-Resident Domestic	457	278	735	473	252	725	4%	-9%	-1%
Non-Resident International	514	936	1,450	499	900	1,399	-3%	-4%	-4%
Los Angeles	26,536	10,279	36,815	26,687	10,307	36,994	1%	0%	0%
California Resident	23,764	7,688	31,452	23,642	7,649	31,291	-1%	-1%	-1%
Non-Resident Domestic	1,586	1,025	2,611	1,771	1,000	2,771	12%	-2%	6%
Non-Resident International	1,186	1,566	2,752	1,274	1,658	2,932	7%	6%	7%
Merced	2,534	184	2,718	3,190	224	3,414	26%	22%	26%
California Resident	2,492	116	2,608	3,141	142	3,283	26%	22%	26%
Non-Resident Domestic	16	5	21	19	10	29	19%	100%	38%
Non-Resident International	26	63	89	30	72	102	15%	14%	15%
Riverside	15,752	2,269	18,021	17,042	2,311	19,353	8%	2%	7%
California Resident	15,391	1,475	16,866	16,630	1,477	18,107	8%	0%	7%
Non-Resident Domestic	173	102	275	225	128	353	30%	25%	28%
Non-Resident International	188	692	880	187	706	893	-1%	2%	1%
San Diego	22,518	4,797	27,315	23,143	5,018	28,161	3%	5%	3%
California Resident	21,112	3,604	24,716	21,611	3,597	25,208	2%	0%	2%
Non-Resident Domestic	761	327	1,088	737	414	1,151	-3%	27%	6%
Non-Resident International	645	866	1,511	795	1,007	1,802	23%	16%	19%
San Francisco	0	2,789	2,789	0	2,907	2,907	n/a	4%	4%
California Resident	0	2,541	2,541	0	2,633	2,633	n/a	4%	4%
Non-Resident Domestic	0	160	160	0	167	167	n/a	4%	4%
Non-Resident International	0	88	88	0	107	107	n/a	22%	22%
Santa Barbara	18,900	2,968	21,868	19,814	3,036	22,850	5%	2%	4%
California Resident	17,963	2,172	20,135	18,892	2,267	21,159	5%	4%	5%
Non-Resident Domestic	736	254	990	683	243	926	-7%	-4%	-6%
Non-Resident International	201	542	743	239	526	765	19%	-3%	3%
Santa Cruz	15,125	1,488	16,613	15,259	1,504	16,763	1%	1%	1%
California Resident	14,670	1,216	15,886	14,836	1,182	16,018	1%	-3%	1%
Non-Resident Domestic	392	81	473	381	113	494	-3%	40%	4%
Non-Resident International	63	191	254	42	209	251	-33%	9%	-1%
University Total	173,078	43,816	216,894	177,788	44,627	222,415	3%	2%	3%
California Resident	162,586	32,556	195,142	166,539	32,892	199,431	2%	1%	2%
Non-Resident Domestic	6,316	3,802	10,118	6,452	4,074	10,526	2%	7%	4%
Non-Resident International	4,176	7,458	11,634	4,797	7,661	12,458	15%	3%	7%

Excludes health sciences residents and students in self-supporting programs.

Table 7a: Enrollment by Ethnicity, Gender, and Level: Berkeley

	Fall 2008			Fall 2009			One-year change		
	Ug	Gr	Total	Ug	Gr	Total	Ug	Gr	Total
International	1,073	1,885	2,958	1,401	1,868	3,269	31%	-1%	11%
Female	500	581	1,081	668	582	1,250	34%	0%	16%
Male	573	1,304	1,877	733	1,286	2,019	28%	-1%	8%
Unknown	0	0	0	0	0	0			
American Indian	121	115	236	129	112	241	7%	-3%	2%
Female	63	52	115	69	51	120	10%	-2%	4%
Male	58	63	121	60	61	121	3%	-3%	0%
Unknown	0	0	0	0	0	0			
African American	889	328	1,217	923	330	1,253	4%	1%	3%
Female	547	201	748	577	203	780	5%	1%	4%
Male	342	127	469	346	127	473	1%	0%	1%
Unknown	0	0	0	0	0	0			
Chicano/Chicana	2,086	326	2,412	2,190	364	2,554	5%	12%	6%
Female	1,205	155	1,360	1,271	181	1,452	5%	17%	7%
Male	881	171	1,052	919	183	1,102	4%	7%	5%
Unknown	0	0	0	0	0	0			
Latino/Latina	840	314	1,154	857	339	1,196	2%	8%	4%
Female	481	164	645	467	188	655	-3%	15%	2%
Male	359	150	509	390	151	541	9%	1%	6%
Unknown	0	0	0	0	0	0			
Filipino/Pilipino	871	101	972	837	114	951	-4%	13%	-2%
Female	516	60	576	486	66	552	-6%	10%	-4%
Male	355	41	396	351	48	399	-1%	17%	1%
Unknown	0	0	0	0	0	0			
Chinese	5,297	766	6,063	5,263	744	6,007	-1%	-3%	-1%
Female	2,788	405	3,193	2,737	391	3,128	-2%	-3%	-2%
Male	2,509	361	2,870	2,526	353	2,879	1%	-2%	0%
Unknown	0	0	0	0	0	0			
Japanese	446	121	567	421	119	540	-6%	-2%	-5%
Female	221	62	283	211	65	276	-5%	5%	-2%
Male	225	59	284	210	54	264	-7%	-8%	-7%
Unknown	0	0	0	0	0	0			
Korean	1,242	179	1,421	1,204	179	1,383	-3%	0%	-3%
Female	662	106	768	618	103	721	-7%	-3%	-6%
Male	580	73	653	586	76	662	1%	4%	1%
Unknown	0	0	0	0	0	0			
Other Asian	1,590	194	1,784	1,519	199	1,718	-4%	3%	-4%
Female	923	122	1,045	897	126	1,023	-3%	3%	-2%
Male	667	72	739	622	73	695	-7%	1%	-6%
Unknown	0	0	0	0	0	0			
Pakistani/East Indian/Other	1,381	811	2,192	1,443	818	2,261	4%	1%	3%
Female	693	353	1,046	737	354	1,091	6%	0%	4%
Male	688	458	1,146	706	464	1,170	3%	1%	2%
Unknown	0	0	0	0	0	0			
White	7,740	4,258	11,998	7,783	4,195	11,978	1%	-1%	0%
Female	3,963	1,959	5,922	3,936	1,923	5,859	-1%	-2%	-1%
Male	3,777	2,299	6,076	3,847	2,272	6,119	2%	-1%	1%
Unknown	0	0	0	0	0	0			
Not Stated/Unknown	1,575	860	2,435	1,560	932	2,492	-1%	8%	2%
Female	825	383	1,208	836	410	1,246	1%	7%	3%
Male	750	477	1,227	724	522	1,246	-3%	9%	2%
Unknown	0	0	0	0	0	0			
Campus Total	25,151	10,258	35,409	25,530	10,313	35,843	2%	1%	1%
Female	13,387	4,603	17,990	13,510	4,643	18,153	1%	1%	1%
Male	11,764	5,655	17,419	12,020	5,670	17,690	2%	0%	2%
Unknown	0	0	0	0	0	0			

Graduate student headcounts include health sciences residents.

Table 7b: Enrollment by Ethnicity, Gender, and Level: Davis

	Fall 2008			Fall 2009			One-year change		
	Ug	Gr	Total	Ug	Gr	Total	Ug	Gr	Total
International	496	1,038	1,534	557	1,027	1,584	12%	-1%	3%
Female	279	438	717	300	439	739	8%	0%	3%
Male	217	600	817	257	588	845	18%	-2%	3%
Unknown	0	0	0	0	0	0			
American Indian	158	49	207	171	49	220	8%	0%	6%
Female	105	25	130	111	20	131	6%	-20%	1%
Male	53	24	77	60	29	89	13%	21%	16%
Unknown	0	0	0	0	0	0			
African American	717	136	853	727	143	870	1%	5%	2%
Female	443	89	532	451	95	546	2%	7%	3%
Male	274	47	321	276	48	324	1%	2%	1%
Unknown	0	0	0	0	0	0			
Chicano/Chicana	2,328	239	2,567	2,528	258	2,786	9%	8%	9%
Female	1,419	127	1,546	1,535	134	1,669	8%	6%	8%
Male	909	112	1,021	993	124	1,117	9%	11%	9%
Unknown	0	0	0	0	0	0			
Latino/Latina	757	184	941	825	199	1,024	9%	8%	9%
Female	471	108	579	502	118	620	7%	9%	7%
Male	286	76	362	323	81	404	13%	7%	12%
Unknown	0	0	0	0	0	0			
Filipino/Pilipino	955	101	1,056	958	115	1,073	0%	14%	2%
Female	559	55	614	554	65	619	-1%	18%	1%
Male	396	46	442	404	50	454	2%	9%	3%
Unknown	0	0	0	0	0	0			
Chinese	4,440	479	4,919	4,354	534	4,888	-2%	11%	-1%
Female	2,314	230	2,544	2,286	269	2,555	-1%	17%	0%
Male	2,126	249	2,375	2,068	265	2,333	-3%	6%	-2%
Unknown	0	0	0	0	0	0			
Japanese	416	73	489	413	81	494	-1%	11%	1%
Female	234	47	281	235	47	282	0%	0%	0%
Male	182	26	208	178	34	212	-2%	31%	2%
Unknown	0	0	0	0	0	0			
Korean	649	87	736	629	91	720	-3%	5%	-2%
Female	339	53	392	328	53	381	-3%	0%	-3%
Male	310	34	344	301	38	339	-3%	12%	-1%
Unknown	0	0	0	0	0	0			
Other Asian	2,350	282	2,632	2,379	278	2,657	1%	-1%	1%
Female	1,362	155	1,517	1,393	152	1,545	2%	-2%	2%
Male	988	127	1,115	986	126	1,112	0%	-1%	0%
Unknown	0	0	0	0	0	0			
Pakistani/East Indian/Other	1,381	437	1,818	1,470	477	1,947	6%	9%	7%
Female	784	204	988	816	250	1,066	4%	23%	8%
Male	597	233	830	654	227	881	10%	-3%	6%
Unknown	0	0	0	0	0	0			
White	8,549	3,234	11,783	8,727	3,453	12,180	2%	7%	3%
Female	4,793	1,692	6,485	4,881	1,803	6,684	2%	7%	3%
Male	3,756	1,542	5,298	3,846	1,650	5,496	2%	7%	4%
Unknown	0	0	0	0	0	0			
Not Stated/Unknown	1,128	763	1,891	1,032	678	1,710	-9%	-11%	-10%
Female	604	391	995	546	350	896	-10%	-10%	-10%
Male	524	372	896	486	328	814	-7%	-12%	-9%
Unknown	0	0	0	0	0	0			
Campus Total	24,324	7,102	31,426	24,770	7,383	32,153	2%	4%	2%
Female	13,706	3,614	17,320	13,938	3,795	17,733	2%	5%	2%
Male	10,618	3,488	14,106	10,832	3,588	14,420	2%	3%	2%
Unknown	0	0	0	0	0	0			

Graduate student headcounts include health sciences residents.

Table 7c: Enrollment by Ethnicity, Gender, and Level: Irvine

	Fall 2008			Fall 2009			One-year change		
	Ug	Gr	Total	Ug	Gr	Total	Ug	Gr	Total
International	601	988	1,589	562	940	1,502	-6%	-5%	-5%
Female	287	330	617	271	301	572	-6%	-9%	-7%
Male	309	658	967	287	639	926	-7%	-3%	-4%
Unknown	5	0	5	4	0	4			
American Indian	96	15	111	94	16	110	-2%	7%	-1%
Female	54	9	63	56	7	63	4%	-22%	0%
Male	42	6	48	38	9	47	-10%	50%	-2%
Unknown	0	0	0	0	0	0			
African American	499	85	584	502	87	589	1%	2%	1%
Female	286	49	335	295	48	343	3%	-2%	2%
Male	213	36	249	207	39	246	-3%	8%	-1%
Unknown	0	0	0	0	0	0			n/a
Chicano/Chicana	2,125	226	2,351	2,262	225	2,487	6%	0%	6%
Female	1,218	120	1,338	1,315	119	1,434	8%	-1%	7%
Male	907	106	1,013	947	106	1,053	4%	0%	4%
Unknown	0	0	0	0	0	0			
Latino/Latina	743	123	866	792	160	952	7%	30%	10%
Female	403	52	455	442	71	513	10%	37%	13%
Male	340	71	411	350	89	439	3%	25%	7%
Unknown	0	0	0	0	0	0			n/a
Filipino/Pilipino	1,727	74	1,801	1,699	89	1,788	-2%	20%	-1%
Female	966	31	997	953	40	993	-1%	29%	0%
Male	760	43	803	745	49	794	-2%	14%	-1%
Unknown	1	0	1	1	0	1			
Chinese	3,899	467	4,366	4,032	492	4,524	3%	5%	4%
Female	1,955	179	2,134	2,028	203	2,231	4%	13%	5%
Male	1,944	288	2,232	2,003	289	2,292	3%	0%	3%
Unknown	0	0	0	1	0	1			
Japanese	635	64	699	625	64	689	-2%	0%	-1%
Female	342	36	378	343	31	374	0%	-14%	-1%
Male	293	28	321	282	33	315	-4%	18%	-2%
Unknown	0	0	0	0	0	0			
Korean	1,521	96	1,617	1,497	116	1,613	-2%	21%	0%
Female	819	51	870	792	64	856	-3%	25%	-2%
Male	701	45	746	704	52	756	0%	16%	1%
Unknown	1	0	1	1	0	1			
Other Asian	2,960	262	3,222	3,006	262	3,268	2%	0%	1%
Female	1,581	124	1,705	1,666	118	1,784	5%	-5%	5%
Male	1,378	137	1,515	1,339	144	1,483	-3%	5%	-2%
Unknown	1	1	2	1	0	1			
Pakistani/East Indian/Other	1,306	434	1,740	1,371	456	1,827	5%	5%	5%
Female	669	220	889	720	209	929	8%	-5%	4%
Male	635	214	849	649	247	896	2%	15%	6%
Unknown	2	0	2	2	0	2			
White	5,202	1,939	7,141	5,039	2,091	7,130	-3%	8%	0%
Female	2,708	833	3,541	2,594	889	3,483	-4%	7%	-2%
Male	2,493	1,106	3,599	2,444	1,200	3,644	-2%	8%	1%
Unknown	1	0	1	1	2	3			
Not Stated/Unknown	924	620	1,544	872	441	1,313	-6%	-29%	-15%
Female	414	231	645	414	183	597	0%	-21%	-7%
Male	389	380	769	359	256	615	-8%	-33%	-20%
Unknown	121	9	130	99	2	101			
Campus Total	22,238	5,393	27,631	22,353	5,439	27,792	1%	1%	1%
Female	11,702	2,265	13,967	11,889	2,283	14,172	2%	1%	1%
Male	10,404	3,118	13,522	10,354	3,152	13,506	0%	1%	0%
Unknown	132	10	142	110	4	114			

Graduate student headcounts include health sciences residents.

Table 7d: Enrollment by Ethnicity, Gender, and Level: Los Angeles

	Fall 2008			Fall 2009			One-year change		
	Ug	Gr	Total	Ug	Gr	Total	Ug	Gr	Total
International	1,189	1,814	3,003	1,280	1,950	3,230	8%	7%	8%
Female	613	641	1,254	643	685	1,328	5%	7%	6%
Male	576	1,173	1,749	637	1,265	1,902	11%	8%	9%
Unknown	0	0	0	0	0	0			
American Indian	104	67	171	121	61	182	16%	-9%	6%
Female	55	41	96	71	36	107	29%	-12%	11%
Male	49	26	75	50	25	75	2%	-4%	0%
Unknown	0	0	0	0	0	0			
African American	938	471	1,409	986	457	1,443	5%	-3%	2%
Female	564	297	861	610	289	899	8%	-3%	4%
Male	374	174	548	376	168	544	1%	-3%	-1%
Unknown	0	0	0	0	0	0			
Chicano/Chicana	2,919	608	3,527	3,031	577	3,608	4%	-5%	2%
Female	1,802	365	2,167	1,876	344	2,220	4%	-6%	2%
Male	1,117	243	1,360	1,155	233	1,388	3%	-4%	2%
Unknown	0	0	0	0	0	0			
Latino/Latina	1,026	499	1,525	1,072	502	1,574	4%	1%	3%
Female	614	286	900	628	285	913	2%	0%	1%
Male	412	213	625	444	217	661	8%	2%	6%
Unknown	0	0	0	0	0	0			
Filipino/Pilipino	991	207	1,198	1,047	206	1,253	6%	0%	5%
Female	606	121	727	622	123	745	3%	2%	2%
Male	385	86	471	425	83	508	10%	-3%	8%
Unknown	0	0	0	0	0	0			
Chinese	4,298	1,104	5,402	4,246	1,091	5,337	-1%	-1%	-1%
Female	2,328	521	2,849	2,269	534	2,803	-3%	2%	-2%
Male	1,970	583	2,553	1,977	557	2,534	0%	-4%	-1%
Unknown	0	0	0	0	0	0			
Japanese	544	158	702	584	157	741	7%	-1%	6%
Female	276	84	360	300	74	374	9%	-12%	4%
Male	268	74	342	284	83	367	6%	12%	7%
Unknown	0	0	0	0	0	0			
Korean	1,540	331	1,871	1,471	350	1,821	-4%	6%	-3%
Female	816	179	995	782	196	978	-4%	9%	-2%
Male	724	152	876	689	154	843	-5%	1%	-4%
Unknown	0	0	0	0	0	0			
Other Asian	1,902	488	2,390	1,910	469	2,379	0%	-4%	0%
Female	1,089	291	1,380	1,093	268	1,361	0%	-8%	-1%
Male	813	197	1,010	817	201	1,018	0%	2%	1%
Unknown	0	0	0	0	0	0			
Pakistani/East Indian/Other	1,396	1,703	3,099	1,413	1,798	3,211	1%	6%	4%
Female	736	857	1,593	741	877	1,618	1%	2%	2%
Male	660	846	1,506	672	921	1,593	2%	9%	6%
Unknown	0	0	0	0	0	0			
White	9,006	5,208	14,214	8,879	5,228	14,107	-1%	0%	-1%
Female	4,852	2,464	7,316	4,891	2,435	7,326	1%	-1%	0%
Male	4,154	2,744	6,898	3,988	2,793	6,781	-4%	2%	-2%
Unknown	0	0	0	0	0	0			
Not Stated/Unknown	683	456	1,139	647	451	1,098	-5%	-1%	-4%
Female	343	192	535	312	189	501	-9%	-2%	-6%
Male	340	264	604	335	262	597	-1%	-1%	-1%
Unknown	0	0	0	0	0	0			
Campus Total	26,536	13,114	39,650	26,687	13,297	39,984	1%	1%	1%
Female	14,694	6,339	21,033	14,838	6,335	21,173	1%	0%	1%
Male	11,842	6,775	18,617	11,849	6,962	18,811	0%	3%	1%
Unknown	0	0	0	0	0	0			

Graduate student headcounts include health sciences residents.

Table 7e: Enrollment by Ethnicity, Gender, and Level: Merced

	Fall 2008			Fall 2009			One-year change		
	Ug	Gr	Total	Ug	Gr	Total	Ug	Gr	Total
International	30	65	95	34	74	108	13%	14%	14%
Female	16	23	39	19	25	44	19%	9%	13%
Male	14	42	56	14	49	63	0%	17%	13%
Unknown	0	0	0	1	0	1			
American Indian	17	0	17	22	1	23	29%	n/a	35%
Female	7	0	7	13	1	14	86%	n/a	100%
Male	10	0	10	9	0	9	-10%	n/a	-10%
Unknown	0	0	0	0	0	0			
African American	164	2	166	229	3	232	40%	50%	40%
Female	103	0	103	141	0	141	37%	n/a	37%
Male	61	2	63	88	3	91	44%	50%	44%
Unknown	0	0	0	0	0	0			
Chicano/Chicana	627	20	647	868	25	893	38%	25%	38%
Female	353	8	361	494	8	502	40%	0%	39%
Male	274	12	286	374	17	391	36%	42%	37%
Unknown	0	0	0	0	0	0			
Latino/Latina	136	2	138	160	5	165	18%	150%	20%
Female	59	0	59	78	1	79	32%	n/a	34%
Male	77	2	79	82	4	86	6%	100%	9%
Unknown	0	0	0	0	0	0			
Filipino/Pilipino	175	0	175	205	3	208	17%	n/a	19%
Female	84	0	84	99	2	101	18%	n/a	20%
Male	91	0	91	106	1	107	16%	n/a	18%
Unknown	0	0	0	0	0	0			
Chinese	269	8	277	318	8	326	18%	0%	18%
Female	103	3	106	128	2	130	24%	-33%	23%
Male	166	5	171	190	6	196	14%	20%	15%
Unknown	0	0	0	0	0	0			
Japanese	32	1	33	42	3	45	31%	200%	36%
Female	12	0	12	17	1	18	42%	n/a	50%
Male	20	1	21	25	2	27	25%	100%	29%
Unknown	0	0	0	0	0	0			
Korean	52	1	53	65	1	66	25%	0%	25%
Female	24	0	24	30	0	30	25%	n/a	25%
Male	28	1	29	35	1	36	25%	0%	24%
Unknown	0	0	0	0	0	0			
Other Asian	232	5	237	298	3	301	28%	-40%	27%
Female	115	3	118	154	1	155	34%	-67%	31%
Male	117	2	119	144	2	146	23%	0%	23%
Unknown	0	0	0	0	0	0			
Pakistani/East Indian/Other	127	6	133	198	8	206	56%	33%	55%
Female	52	1	53	92	2	94	77%	100%	77%
Male	75	5	80	98	6	104	31%	20%	30%
Unknown	0	0	0	8	0	8			
White	610	53	663	699	75	774	15%	42%	17%
Female	233	24	257	271	36	307	16%	50%	19%
Male	377	29	406	428	39	467	14%	34%	15%
Unknown	0	0	0	0	0	0			
Not Stated/Unknown	63	21	84	52	15	67	-17%	-29%	-20%
Female	23	6	29	18	4	22	-22%	-33%	-24%
Male	35	15	50	31	11	42	-11%	-27%	-16%
Unknown	5	0	5	3	0	3			
Campus Total	2,534	184	2,718	3,190	224	3,414	26%	22%	26%
Female	1,184	68	1,252	1,554	83	1,637	31%	22%	31%
Male	1,345	116	1,461	1,624	141	1,765	21%	22%	21%
Unknown	5	0	5	12	0	12			

Graduate student headcounts include health sciences residents.

Table 7f: Enrollment by Ethnicity, Gender, and Level: Riverside

	Fall 2008			Fall 2009			One-year change		
	Ug	Gr	Total	Ug	Gr	Total	Ug	Gr	Total
International	274	702	976	258	713	971	-6%	2%	-1%
Female	134	317	451	101	310	411	-25%	-2%	-9%
Male	139	385	524	156	403	559	12%	5%	7%
Unknown	1	0	1	1	0	1			
American Indian	62	7	69	63	9	72	2%	29%	4%
Female	35	3	38	35	6	41	0%	100%	8%
Male	27	4	31	28	3	31	4%	-25%	0%
Unknown	0	0	0	0	0	0			
African American	1,223	54	1,277	1,338	68	1,406	9%	26%	10%
Female	787	28	815	852	35	887	8%	25%	9%
Male	436	26	462	486	33	519	11%	27%	12%
Unknown	0	0	0	0	0	0			
Chicano/Chicana	3,456	128	3,584	3,903	124	4,027	13%	-3%	12%
Female	2,105	71	2,176	2,380	74	2,454	13%	4%	13%
Male	1,350	57	1,407	1,522	50	1,572	13%	-12%	12%
Unknown	1	0	1	1	0	1			
Latino/Latina	922	60	982	1,022	63	1,085	11%	5%	10%
Female	551	22	573	614	29	643	11%	32%	12%
Male	371	38	409	408	34	442	10%	-11%	8%
Unknown	0	0	0	0	0	0			
Filipino/Pilipino	937	39	976	1,022	30	1,052	9%	-23%	8%
Female	455	14	469	503	10	513	11%	-29%	9%
Male	482	25	507	519	20	539	8%	-20%	6%
Unknown	0	0	0	0	0	0			
Chinese	2,206	87	2,293	2,397	85	2,482	9%	-2%	8%
Female	970	43	1,013	1,059	43	1,102	9%	0%	9%
Male	1,236	44	1,280	1,338	42	1,380	8%	-5%	8%
Unknown	0	0	0	0	0	0			
Japanese	196	19	215	202	14	216	3%	-26%	0%
Female	89	9	98	87	5	92	-2%	-44%	-6%
Male	106	10	116	114	9	123	8%	-10%	6%
Unknown	1	0	1	1	0	1			
Korean	928	33	961	971	30	1,001	5%	-9%	4%
Female	400	18	418	421	14	435	5%	-22%	4%
Male	528	15	543	550	16	566	4%	7%	4%
Unknown	0	0	0	0	0	0			
Other Asian	1,522	63	1,585	1,615	67	1,682	6%	6%	6%
Female	776	33	809	815	33	848	5%	0%	5%
Male	745	30	775	800	34	834	7%	13%	8%
Unknown	1	0	1	0	0	0			
Pakistani/East Indian/Other	833	158	991	913	151	1,064	10%	-4%	7%
Female	387	83	470	431	74	505	11%	-11%	7%
Male	446	75	521	481	77	558	8%	3%	7%
Unknown	0	0	0	1	0	1			
White	2,700	798	3,498	2,895	831	3,726	7%	4%	7%
Female	1,275	364	1,639	1,372	381	1,753	8%	5%	7%
Male	1,424	434	1,858	1,521	450	1,971	7%	4%	6%
Unknown	1	0	1	2	0	2			
Not Stated/Unknown	493	179	672	443	212	655	-10%	18%	-3%
Female	214	88	302	182	105	287	-15%	19%	-5%
Male	252	91	343	228	107	335	-10%	18%	-2%
Unknown	27	0	27	33	0	33			
Campus Total	15,752	2,327	18,079	17,042	2,397	19,439	8%	3%	8%
Female	8,178	1,093	9,271	8,852	1,119	9,971	8%	2%	8%
Male	7,542	1,234	8,776	8,151	1,278	9,429	8%	4%	7%
Unknown	32	0	32	39	0	39			

Graduate student headcounts include health sciences residents.

Table 7g: Enrollment by Ethnicity, Gender, and Level: San Diego

	Fall 2008			Fall 2009			One-year change		
	Ug	Gr	Total	Ug	Gr	Total	Ug	Gr	Total
International	728	910	1,638	861	1,063	1,924	18%	17%	17%
Female	330	284	614	401	315	716	22%	11%	17%
Male	398	626	1,024	460	748	1,208	16%	19%	18%
Unknown	0	0	0	0	0	0			
American Indian	90	44	134	92	48	140	2%	9%	4%
Female	43	20	63	40	19	59	-7%	-5%	-6%
Male	47	24	71	52	29	81	11%	21%	14%
Unknown	0	0	0	0	0	0			
African American	339	90	429	366	97	463	8%	8%	8%
Female	201	51	252	212	60	272	5%	18%	8%
Male	138	39	177	154	37	191	12%	-5%	8%
Unknown	0	0	0	0	0	0			
Chicano/Chicana	2,130	253	2,383	2,317	243	2,560	9%	-4%	7%
Female	1,230	122	1,352	1,313	119	1,432	7%	-2%	6%
Male	900	131	1,031	1,004	124	1,128	12%	-5%	9%
Unknown	0	0	0	0	0	0			
Latino/Latina	613	120	733	652	161	813	6%	34%	11%
Female	343	56	399	355	76	431	3%	36%	8%
Male	270	64	334	297	85	382	10%	33%	14%
Unknown	0	0	0	0	0	0			
Filipino/Pilipino	1,049	59	1,108	1,031	70	1,101	-2%	19%	-1%
Female	559	35	594	544	38	582	-3%	9%	-2%
Male	490	24	514	487	32	519	-1%	33%	1%
Unknown	0	0	0	0	0	0			
Chinese	4,474	544	5,018	4,750	585	5,335	6%	8%	6%
Female	2,323	257	2,580	2,456	286	2,742	6%	11%	6%
Male	2,151	287	2,438	2,294	299	2,593	7%	4%	6%
Unknown	0	0	0	0	0	0			
Japanese	497	64	561	463	72	535	-7%	13%	-5%
Female	270	31	301	248	31	279	-8%	0%	-7%
Male	227	33	260	215	41	256	-5%	24%	-2%
Unknown	0	0	0	0	0	0			
Korean	2,015	114	2,129	2,044	114	2,158	1%	0%	1%
Female	1,101	68	1,169	1,087	64	1,151	-1%	-6%	-2%
Male	914	46	960	957	50	1,007	5%	9%	5%
Unknown	0	0	0	0	0	0			
Other Asian	2,232	207	2,439	2,247	224	2,471	1%	8%	1%
Female	1,231	109	1,340	1,288	113	1,401	5%	4%	5%
Male	1,001	98	1,099	959	111	1,070	-4%	13%	-3%
Unknown	0	0	0	0	0	0			
Pakistani/East Indian/Other	1,034	320	1,354	1,150	334	1,484	11%	4%	10%
Female	508	132	640	580	135	715	14%	2%	12%
Male	526	188	714	570	199	769	8%	6%	8%
Unknown	0	0	0	0	0	0			
White	6,009	2,664	8,673	5,968	2,701	8,669	-1%	1%	0%
Female	2,971	1,135	4,106	2,895	1,131	4,026	-3%	0%	-2%
Male	3,038	1,529	4,567	3,073	1,570	4,643	1%	3%	2%
Unknown	0	0	0	0	0	0			
Not Stated/Unknown	1,308	293	1,601	1,202	255	1,457	-8%	-13%	-9%
Female	633	144	777	585	132	717	-8%	-8%	-8%
Male	675	149	824	617	123	740	-9%	-17%	-10%
Unknown	0	0	0	0	0	0			
Campus Total	22,518	5,682	28,200	23,143	5,967	29,110	3%	5%	3%
Female	11,743	2,444	14,187	12,004	2,519	14,523	2%	3%	2%
Male	10,775	3,238	14,013	11,139	3,448	14,587	3%	6%	4%
Unknown	0	0	0	0	0	0			

Graduate student headcounts include health sciences residents.

Table 7h: Enrollment by Ethnicity, Gender, and Level: San Francisco

	Fall 2008			Fall 2009			One-year change		
	Ug	Gr	Total	Ug	Gr	Total	Ug	Gr	Total
International	0	145	145	0	153	153	n/a	6%	6%
Female	0	93	93	0	94	94	n/a	1%	1%
Male	0	52	52	0	59	59	n/a	13%	13%
Unknown	0	0	0	0	0	0			
American Indian	0	29	29	0	27	27	n/a	-7%	-7%
Female	0	19	19	0	17	17	n/a	-11%	-11%
Male	0	10	10	0	10	10	n/a	0%	0%
Unknown	0	0	0	0	0	0			
African American	0	156	156	0	163	163	n/a	4%	4%
Female	0	103	103	0	113	113	n/a	10%	10%
Male	0	53	53	0	49	49	n/a	-8%	-8%
Unknown	0	0	0	0	1	1			
Chicano/Chicana	0	173	173	0	170	170	n/a	-2%	-2%
Female	0	95	95	0	94	94	n/a	-1%	-1%
Male	0	78	78	0	76	76	n/a	-3%	-3%
Unknown	0	0	0	0	0	0			
Latino/Latina	0	138	138	0	131	131	n/a	-5%	-5%
Female	0	83	83	0	84	84	n/a	1%	1%
Male	0	55	55	0	46	46	n/a	-16%	-16%
Unknown	0	0	0	0	1	1			
Filipino/Pilipino	0	98	98	0	119	119	n/a	21%	21%
Female	0	67	67	0	77	77	n/a	15%	15%
Male	0	31	31	0	42	42	n/a	35%	35%
Unknown	0	0	0	0	0	0			
Chinese	0	487	487	0	480	480	n/a	-1%	-1%
Female	0	328	328	0	331	331	n/a	1%	1%
Male	0	159	159	0	149	149	n/a	-6%	-6%
Unknown	0	0	0	0	0	0			
Japanese	0	62	62	0	53	53	n/a	-15%	-15%
Female	0	37	37	0	31	31	n/a	-16%	-16%
Male	0	25	25	0	22	22	n/a	-12%	-12%
Unknown	0	0	0	0	0	0			
Korean	0	94	94	0	96	96	n/a	2%	2%
Female	0	63	63	0	58	58	n/a	-8%	-8%
Male	0	31	31	0	37	37	n/a	19%	19%
Unknown	0	0	0	0	1	1			
Other Asian	0	352	352	0	331	331	n/a	-6%	-6%
Female	0	217	217	0	193	193	n/a	-11%	-11%
Male	0	134	134	0	131	131	n/a	-2%	-2%
Unknown	0	1	1	0	7	7			
Pakistani/East Indian/Other	0	414	414	0	429	429	n/a	4%	4%
Female	0	266	266	0	267	267	n/a	0%	0%
Male	0	148	148	0	161	161	n/a	9%	9%
Unknown	0	0	0	0	1	1			
White	0	1,868	1,868	0	1,884	1,884	n/a	1%	1%
Female	0	1,084	1,084	0	1,104	1,104	n/a	2%	2%
Male	0	784	784	0	770	770	n/a	-2%	-2%
Unknown	0	0	0	0	10	10			
Not Stated/Unknown	0	428	428	0	457	457	n/a	7%	7%
Female	0	242	242	0	259	259	n/a	7%	7%
Male	0	185	185	0	188	188	n/a	2%	2%
Unknown	0	1	1	0	10	10			
Campus Total	0	4,444	4,444	0	4,493	4,493	n/a	1%	1%
Female	0	2,697	2,697	0	2,722	2,722	n/a	1%	1%
Male	0	1,745	1,745	0	1,740	1,740	n/a	0%	0%
Unknown	0	2	2	0	31	31			

Graduate student headcounts include health sciences residents.

Table 7i: Enrollment by Ethnicity, Gender, and Level: Santa Barbara

	Fall 2008			Fall 2009			One-year change		
	Ug	Gr	Total	Ug	Gr	Total	Ug	Gr	Total
International	223	549	772	270	536	806	21%	-2%	4%
Female	98	180	278	110	180	290	12%	0%	4%
Male	125	369	494	160	356	516	28%	-4%	4%
Unknown	0	0	0	0	0	0			
American Indian	137	13	150	174	13	187	27%	0%	25%
Female	82	10	92	105	10	115	28%	0%	25%
Male	55	3	58	69	3	72	25%	0%	24%
Unknown	0	0	0	0	0	0			
African American	576	51	627	641	54	695	11%	6%	11%
Female	352	31	383	405	37	442	15%	19%	15%
Male	224	20	244	236	17	253	5%	-15%	4%
Unknown	0	0	0	0	0	0			
Chicano/Chicana	2,991	136	3,127	3,287	136	3,423	10%	0%	9%
Female	1,803	75	1,878	1,961	69	2,030	9%	-8%	8%
Male	1,188	61	1,249	1,326	67	1,393	12%	10%	12%
Unknown	0	0	0	0	0	0			
Latino/Latina	920	92	1,012	1,012	92	1,104	10%	0%	9%
Female	525	54	579	574	48	622	9%	-11%	7%
Male	395	38	433	438	44	482	11%	16%	11%
Unknown	0	0	0	0	0	0			
Filipino/Pilipino	561	15	576	574	17	591	2%	13%	3%
Female	317	13	330	327	14	341	3%	8%	3%
Male	244	2	246	247	3	250	1%	50%	2%
Unknown	0	0	0	0	0	0			
Chinese	1,027	89	1,116	1,192	89	1,281	16%	0%	15%
Female	539	50	589	587	51	638	9%	2%	8%
Male	488	39	527	605	38	643	24%	-3%	22%
Unknown	0	0	0	0	0	0			
Japanese	312	26	338	302	29	331	-3%	12%	-2%
Female	173	16	189	169	15	184	-2%	-6%	-3%
Male	139	10	149	133	14	147	-4%	40%	-1%
Unknown	0	0	0	0	0	0			
Korean	370	43	413	383	41	424	4%	-5%	3%
Female	176	21	197	203	22	225	15%	5%	14%
Male	194	22	216	180	19	199	-7%	-14%	-8%
Unknown	0	0	0	0	0	0			
Other Asian	667	44	711	764	48	812	15%	9%	14%
Female	370	28	398	402	30	432	9%	7%	9%
Male	297	16	313	362	18	380	22%	13%	21%
Unknown	0	0	0	0	0	0			
Pakistani/East Indian/Other	514	146	660	533	150	683	4%	3%	3%
Female	258	75	333	246	75	321	-5%	0%	-4%
Male	256	71	327	287	75	362	12%	6%	11%
Unknown	0	0	0	0	0	0			
White	9,635	1,323	10,958	9,794	1,396	11,190	2%	6%	2%
Female	5,062	610	5,672	5,084	649	5,733	0%	6%	1%
Male	4,573	713	5,286	4,710	747	5,457	3%	5%	3%
Unknown	0	0	0	0	0	0			
Not Stated/Unknown	967	441	1,408	888	435	1,323	-8%	-1%	-6%
Female	501	184	685	463	198	661	-8%	8%	-4%
Male	466	257	723	425	237	662	-9%	-8%	-8%
Unknown	0	0	0	0	0	0			
Campus Total	18,900	2,968	21,868	19,814	3,036	22,850	5%	2%	4%
Female	10,256	1,347	11,603	10,636	1,398	12,034	4%	4%	4%
Male	8,644	1,621	10,265	9,178	1,638	10,816	6%	1%	5%
Unknown	0	0	0	0	0	0			

Graduate student headcounts include health sciences residents.

Table 7j: Enrollment by Ethnicity, Gender, and Level: Santa Cruz

	Fall 2008			Fall 2009			One-year change		
	Ug	Gr	Total	Ug	Gr	Total	Ug	Gr	Total
International	82	204	286	62	218	280	-24%	7%	-2%
Female	44	81	125	35	82	117	-20%	1%	-6%
Male	38	123	161	27	136	163	-29%	11%	1%
Unknown	0	0	0	0	0	0			
American Indian	133	7	140	142	7	149	7%	0%	6%
Female	75	3	78	86	2	88	15%	-33%	13%
Male	58	4	62	56	5	61	-3%	25%	-2%
Unknown	0	0	0	0	0	0			
African American	396	23	419	413	26	439	4%	13%	5%
Female	231	11	242	240	13	253	4%	18%	5%
Male	164	12	176	172	13	185	5%	8%	5%
Unknown	1	0	1	1	0	1			
Chicano/Chicana	1,866	82	1,948	2,039	84	2,123	9%	2%	9%
Female	1,111	47	1,158	1,240	45	1,285	12%	-4%	11%
Male	755	35	790	798	39	837	6%	11%	6%
Unknown	0	0	0	1	0	1			
Latino/Latina	727	46	773	725	54	779	0%	17%	1%
Female	419	25	444	410	25	435	-2%	0%	-2%
Male	307	21	328	314	29	343	2%	38%	5%
Unknown	1	0	1	1	0	1			
Filipino/Pilipino	572	18	590	517	15	532	-10%	-17%	-10%
Female	321	10	331	293	10	303	-9%	0%	-8%
Male	251	8	259	224	5	229	-11%	-38%	-12%
Unknown	0	0	0	0	0	0			
Chinese	1,414	59	1,473	1,446	53	1,499	2%	-10%	2%
Female	722	29	751	716	26	742	-1%	-10%	-1%
Male	692	30	722	730	27	757	5%	-10%	5%
Unknown	0	0	0	0	0	0			
Japanese	287	20	307	305	17	322	6%	-15%	5%
Female	133	12	145	149	9	158	12%	-25%	9%
Male	154	8	162	156	8	164	1%	0%	1%
Unknown	0	0	0	0	0	0			
Korean	206	15	221	220	13	233	7%	-13%	5%
Female	103	9	112	117	10	127	14%	11%	13%
Male	103	6	109	103	3	106	0%	-50%	-3%
Unknown	0	0	0	0	0	0			
Other Asian	565	25	590	615	23	638	9%	-8%	8%
Female	329	14	343	347	12	359	5%	-14%	5%
Male	236	11	247	268	11	279	14%	0%	13%
Unknown	0	0	0						
Pakistani/East Indian/Other	483	113	596	486	112	598	1%	-1%	0%
Female	267	66	333	262	65	327	-2%	-2%	-2%
Male	216	47	263	223	47	270	3%	0%	3%
Unknown	0	0	0	1	0	1			
White	7,554	730	8,284	7,375	721	8,096	-2%	-1%	-2%
Female	3,890	344	4,234	3,781	338	4,119	-3%	-2%	-3%
Male	3,663	386	4,049	3,593	383	3,976	-2%	-1%	-2%
Unknown	1	0	1	1	0	1			
Not Stated/Unknown	840	148	988	914	173	1,087	9%	17%	10%
Female	407	68	475	428	76	504	5%	12%	6%
Male	388	80	468	440	97	537	13%	21%	15%
Unknown	45	0	45	46	0	46			
Campus Total	15,125	1,490	16,615	15,259	1,516	16,775	1%	2%	1%
Female	8,052	719	8,771	8,104	713	8,817	1%	-1%	1%
Male	7,025	771	7,796	7,104	803	7,907	1%	4%	1%
Unknown	48	0	48	51	0	51			

Graduate student headcounts include health sciences residents.

Table 7k: Enrollment by Ethnicity, Gender, and Level: University Total

	Fall 2008			Fall 2009			One-year change		
	Ug	Gr	Total	Ug	Gr	Total	Ug	Gr	Total
International	4,696	8,300	12,996	5,285	8,542	13,827	13%	3%	6%
Female	2,301	2,968	5,269	2,548	3,013	5,561	11%	2%	6%
Male	2,389	5,332	7,721	2,731	5,529	8,260	14%	4%	7%
Unknown	6	0	6	6	0	6			
American Indian	918	346	1,264	1,008	343	1,351	10%	-1%	7%
Female	519	182	701	586	169	755	13%	-7%	8%
Male	399	164	563	422	174	596	6%	6%	6%
Unknown	0	0	0	0	0	0			
African American	5,741	1,396	7,137	6,125	1,428	7,553	7%	2%	6%
Female	3,514	860	4,374	3,783	893	4,676	8%	4%	7%
Male	2,226	536	2,762	2,341	534	2,875	5%	0%	4%
Unknown	1	0	1	1	1	2			
Chicano/Chicana	20,528	2,191	22,719	22,425	2,206	24,631	9%	1%	8%
Female	12,246	1,185	13,431	13,385	1,187	14,572	9%	0%	8%
Male	8,281	1,006	9,287	9,038	1,019	10,057	9%	1%	8%
Unknown	1	0	1	2	0	2			
Latino/Latina	6,684	1,578	8,262	7,117	1,706	8,823	6%	8%	7%
Female	3,866	850	4,716	4,070	925	4,995	5%	9%	6%
Male	2,817	728	3,545	3,046	780	3,826	8%	7%	8%
Unknown	1	0	1	1	1	2			
Filipino/Pilipino	7,838	712	8,550	7,890	778	8,668	1%	9%	1%
Female	4,383	406	4,789	4,381	445	4,826	0%	10%	1%
Male	3,454	306	3,760	3,508	333	3,841	2%	9%	2%
Unknown	1	0	1	1	0	1			
Chinese	27,324	4,090	31,414	27,998	4,161	32,159	2%	2%	2%
Female	14,042	2,045	16,087	14,266	2,136	16,402	2%	4%	2%
Male	13,282	2,045	15,327	13,731	2,025	15,756	3%	-1%	3%
Unknown	0	0	0	1	0	1			
Japanese	3,365	608	3,973	3,357	609	3,966	0%	0%	0%
Female	1,750	334	2,084	1,759	309	2,068	1%	-7%	-1%
Male	1,614	274	1,888	1,597	300	1,897	-1%	9%	0%
Unknown	1	0	1	1	0	1			
Korean	8,523	993	9,516	8,484	1,031	9,515	0%	4%	0%
Female	4,440	568	5,008	4,378	584	4,962	-1%	3%	-1%
Male	4,082	425	4,507	4,105	446	4,551	1%	5%	1%
Unknown	1	0	1	1	1	2			
Other Asian	14,020	1,922	15,942	14,353	1,904	16,257	2%	-1%	2%
Female	7,776	1,096	8,872	8,055	1,046	9,101	4%	-5%	3%
Male	6,242	824	7,066	6,297	851	7,148	1%	3%	1%
Unknown	2	2	4	1	7	8			
Pakistani/East Indian/Other	8,455	4,542	12,997	8,977	4,733	13,710	6%	4%	5%
Female	4,354	2,257	6,611	4,625	2,308	6,933	6%	2%	5%
Male	4,099	2,285	6,384	4,340	2,424	6,764	6%	6%	6%
Unknown	2	0	2	12	1	13			
White	57,005	22,075	79,080	57,159	22,575	79,734	0%	2%	1%
Female	29,747	10,509	40,256	29,705	10,689	40,394	0%	2%	0%
Male	27,255	11,566	38,821	27,450	11,874	39,324	1%	3%	1%
Unknown	3	0	3	4	12	16			
Not Stated/Unknown	7,981	4,209	12,190	7,610	4,049	11,659	-5%	-4%	-4%
Female	3,964	1,929	5,893	3,784	1,906	5,690	-5%	-1%	-3%
Male	3,819	2,270	6,089	3,645	2,131	5,776	-5%	-6%	-5%
Unknown	198	10	208	181	12	193			
University Total	173,078	52,962	226,040	177,788	54,065	231,853	3%	2%	3%
Female	92,902	25,189	118,091	95,325	25,610	120,935	3%	2%	2%
Male	79,959	27,761	107,720	82,251	28,420	110,671	3%	2%	3%
Unknown	217	12	229	212	35	247			

Graduate student headcounts include health sciences residents.

Table 8: Degrees Conferred by Campus, Degree Type, and Gender

	2007-2008				2008-2009				One-year change		
	Female	Male	Unk	Total	Female	Male	Unk	Total	Female	Male	Total
Berkeley	5,227	4,991	13	10,231	5425	5072	1	10498	4%	2%	3%
Bachelor	3,767	3,180	13	6,960	3950	3298	1	7249	5%	4%	4%
Master	900	1,153	0	2,053	913	1120	0	2033	1%	-3%	-1%
Doctor	363	510	0	873	357	512	0	869	-2%	0%	0%
Juris Doctor	158	133	0	291	163	130	0	293	3%	-2%	1%
Doctor of Optometry	39	15	0	54	42	12	0	54	8%	-20%	0%
Davis	4,237	3,318	3	7,558	4139	3342	6	7487	-2%	1%	-1%
Bachelor	3,262	2,521	2	5,785	3258	2504	0	5762	0%	-1%	0%
Master	465	407	1	873	414	404	6	824	-11%	-1%	-6%
Doctor	249	251	0	500	232	268	0	500	-7%	7%	0%
Candidate in Philosophy	0	0	0	0	3	4	0	7	n/a	n/a	n/a
Juris Doctor	115	78	0	193	93	98	0	191	-19%	26%	-1%
Doctor of Medicine	51	42	0	93	43	42	0	85	-16%	0%	-9%
Doctor of Veterinary Med.	95	19	0	114	96	22	0	118	1%	16%	4%
Irvine	3,277	3,285	51	6,613	3,661	3,542	39	7,242	12%	8%	10%
Bachelor	2,690	2,468	51	5,209	2,978	2,608	39	5,625	11%	6%	8%
Master	391	551	0	942	473	665	0	1,138	21%	21%	21%
Doctor	149	221	0	370	176	226	0	402	18%	2%	9%
Doctor of Medicine	47	45	0	92	34	43	0	77	-28%	-4%	-16%
Los Angeles	6,154	5,189	14	11,357	6,231	5,378	3	11,612	1%	4%	2%
Bachelor	4,066	3,009	14	7,089	4,029	3,189	2	7,220	-1%	6%	2%
Master	1,264	1,307	0	2,571	1,357	1,276	1	2,634	7%	-2%	2%
Doctor	355	397	0	752	356	404	0	760	0%	2%	1%
Candidate in Philosophy	169	164	0	333	177	197	0	374	5%	20%	12%
Engineer	1	2	0	3	0	2	0	2	-100%	0%	-33%
Juris Doctor	165	176	0	341	166	200	0	366	1%	14%	7%
Doctor of Dental Surgery	52	49	0	101	48	56	0	104	-8%	14%	3%
Doctor of Medicine	82	85	0	167	98	54	0	152	20%	-36%	-9%
Merced	47	29	0	76	150	138	1	289	219%	376%	280%
Bachelor	45	29	0	74	145	132	1	278	222%	355%	276%
Master	2	0	0	2	5	5	0	10	150%	n/a	400%
Doctor	0	0	0	0	0	1	0	1	n/a	n/a	n/a
Riverside	2,176	1,932	33	4,141	1,876	1,756	18	3,650	-14%	-9%	-12%
Bachelor	1,866	1,645	33	3,544	1,597	1,440	18	3,055	-14%	-12%	-14%
Master	206	166	0	372	205	201	0	406	0%	21%	9%
Doctor	103	121	0	224	74	114	0	188	-28%	-6%	-16%
Candidate in Philosophy	1	0	0	1	0	1	0	1	-100%	n/a	0%
San Diego	3,532	3,580	11	7,123	3,561	3,585	2	7,148	1%	0%	0%
Bachelor	2,837	2,480	11	5,328	2,795	2,526	2	5,323	-1%	2%	0%
Master	362	532	0	894	421	569	0	990	16%	7%	11%
Doctor	184	299	0	483	179	246	0	425	-3%	-18%	-12%
Candidate in Philosophy	70	188	0	258	65	169	0	234	-7%	-10%	-9%
Doctor of Medicine	53	71	0	124	52	57	0	109	-2%	-20%	-12%
Doctor of Pharmacy	21	10	0	31	39	16	0	55	86%	60%	77%
Doctor of Audiology	5	0	0	5	10	2	0	12	100%	n/a	140%

Table 8: Degrees Conferred by Campus, Degree Type, and Gender

	2007-2008				2008-2009				One-year change		
	Female	Male	Unk	Total	Female	Male	Unk	Total	Female	Male	Total
San Francisco	533	264	0	797	513	218	0	731	-4%	-17%	-8%
Bachelor	0	0	0	0	1	1	0	2	n/a	n/a	n/a
Master	213	42	0	255	180	37	0	217	-15%	-12%	-15%
Doctor	84	62	0	146	70	61	0	131	-17%	-2%	-10%
Doctor of Dental Surgery	54	41	0	95	66	33	0	99	22%	-20%	4%
Doctor of Medicine	76	73	0	149	82	63	0	145	8%	-14%	-3%
Doctor of Pharmacy	91	36	0	127	97	18	0	115	7%	-50%	-9%
Doctor of Physical Therapy	15	10	0	25	17	5	0	22	13%	-50%	-12%
Santa Barbara	3,188	2,715	9	5,912	3,178	2,663	2	5,843	0%	-2%	-1%
Bachelor	2,745	2,223	9	4,977	2,701	2,178	2	4,881	-2%	-2%	-2%
Master	302	276	0	578	325	286	0	611	8%	4%	6%
Doctor	139	207	0	346	150	197	0	347	8%	-5%	0%
Candidate in Philosophy	2	9	0	11	2	2	0	4	0%	-78%	-64%
Santa Cruz	2,054	1,791	14	3,859	2,050	1,618	10	3,678	0%	-10%	-5%
Bachelor	1,817	1,619	14	3,450	1,825	1,437	9	3,271	0%	-11%	-5%
Master	162	116	0	278	155	106	1	262	-4%	-9%	-6%
Doctor	75	56	0	131	70	75	0	145	-7%	34%	11%
University Total	30,425	27,094	148	57,667	30,784	27,312	82	58,178	1%	1%	1%
Bachelor	23,095	19,174	147	42,416	23,279	19,313	74	42,666	1%	1%	1%
Master	4,267	4,550	1	8,818	4,448	4,669	8	9,125	4%	3%	3%
Doctor	1,701	2,124	0	3,825	1,664	2,104	0	3,768	-2%	-1%	-1%
Candidate in Philosophy	242	361	0	603	247	373	0	620	2%	3%	3%
Engineer	1	2	0	3	0	2	0	2	-100%	0%	-33%
Juris Doctor	438	387	0	825	422	428	0	850	-4%	11%	3%
Doctor of Dental Surgery	106	90	0	196	114	89	0	203	8%	-1%	4%
Doctor of Medicine	309	316	0	625	309	259	0	568	0%	-18%	-9%
Doctor of Optometry	39	15	0	54	42	12	0	54	8%	-20%	0%
Doctor of Veterinary Med.	95	19	0	114	96	22	0	118	1%	16%	4%
Doctor of Pharmacy	112	46	0	158	136	34	0	170	21%	-26%	8%
Doctor of Physical Therapy	15	10	0	25	17	5	0	22	13%	-50%	-12%
Doctor of Audiology	5	0	0	5	10	2	0	12	100%	n/a	140%

Table 9: Degrees Conferred by Discipline and Degree Type

	2007-2008			2008-2009			2008-2009 Distribution		
	Bachelor	Master	Doctor	Bachelor	Master	Doctor	Bachelor	Master	Doctor
University Total	42,416	8,818	3,825	42,666	9,125	3,768	100%	100%	100%
Agriculture, Natural Resources	1,097	183	99	1,293	160	96	3%	2%	3%
Architecture & Environmental Design	321	270	24	309	294	29	1%	3%	1%
Area, Ethnic, Cultural & Gender Studies	798	110	21	857	122	26	2%	1%	1%
Biological Sciences	6,271	319	738	6,508	322	691	15%	4%	18%
Business & Management	2,616	1,892	28	2,581	2,015	25	6%	22%	1%
Communication, Journalism & Rel.	881	64	9	875	68	6	2%	1%	0%
Computer & Information Sciences	617	325	194	578	339	215	1%	4%	6%
Criminology	0	13	0	0	21	0	0%	0%	0%
Dental Sciences	0	21	6	2	20	4	0%	0%	0%
Education	5	913	186	10	961	211	0%	11%	6%
Engineering	2,980	1,209	714	3,080	1,235	689	7%	14%	18%
Family & Consumer Sci./Human Sci.	314	24	6	289	19	4	1%	0%	0%
Fine & Applied Arts	2,222	357	78	2,221	394	102	5%	4%	3%
Foreign Languages & Literature	844	187	167	823	153	132	2%	2%	4%
Health Professions	0	89	3	0	84	4	0%	1%	0%
Interdisciplinary Studies/Multiple Majors	5,499	195	123	5,432	95	111	13%	1%	3%
Law	276	153	13	213	169	12	0%	2%	0%
Letters	2,516	175	131	2,348	190	144	6%	2%	4%
Library Science	0	68	3	0	78	1	0%	1%	0%
Mathematics	780	228	127	797	201	143	2%	2%	4%
Nursing	20	348	42	50	340	33	0%	4%	1%
Pharmacy	0	0	16	0	1	13	0%	0%	0%
Physical Sciences	1,033	313	459	1,086	376	487	3%	4%	13%
Psychology	3,698	112	134	3,674	122	115	9%	1%	3%
Public Administration & Social Services	172	285	15	160	314	20	0%	3%	1%
Public Health	105	344	25	217	348	37	1%	4%	1%
Social Sciences	9,343	602	464	9,254	671	418	22%	7%	11%
Veterinary Medical Sciences	8	19	0	9	13	0	0%	0%	0%

Includes Ph.D. and other doctoral degrees, but excludes first professional degrees (J.D., D.D.S., O.D., M.D., Pharm.D., D.V.M., D.P.T., Au.D.).

Table 10: Personnel FTE and Headcount by Campus and Personnel Program

	October 2005		October 2008		October 2009		October 2009 Percentage of Total	
	FTE	Headcount	FTE	Headcount	FTE	Headcount	FTE	Headcount
Office of the President and Agriculture & Natural Resources	3,123	3,562	2,926	3,357	2,587	2,930	100%	100%
Unclassified	0	0	0	0	0	0	0%	0%
Academic	542	580	475	544	433	498	17%	17%
Non-Academic	2,567	2,982	2,451	2,813	2,154	2,432	83%	83%
SMG & MSP	610	649	562	584	567	577	22%	20%
PSS	1,957	2,333	1,889	2,229	1,587	1,855	61%	63%
Office of the President	1,975	2,177	1,711	1,860	1,469	1,575	100%	100%
Unclassified	0	0	0	0	0	0	0%	0%
Academic	91	105	61	75	37	48	3%	3%
Non-Academic	1,884	2,072	1,650	1,785	1,432	1,527	97%	97%
SMG & MSP	580	609	527	546	529	539	36%	34%
PSS	1,304	1,463	1,123	1,239	903	988	61%	63%
Agriculture & Natural Resources	1,148	1,385	1,215	1,497	1,118	1,355	100%	100%
Unclassified	0	0	0	0	0	0	0%	0%
Academic	433	475	414	469	396	450	35%	33%
Non-Academic	715	910	801	1,028	722	905	65%	67%
SMG & MSP	36	40	35	38	38	38	3%	3%
PSS	679	870	766	990	684	867	61%	64%
Berkeley	13,551	20,576	14,444	22,110	14,131	21,437	100%	100%
Unclassified	0	0	0	0	0	0	0%	0%
Academic	5,161	8,408	5,534	8,899	5,600	8,866	40%	41%
Non-Academic	8,390	12,168	8,910	13,211	8,531	12,571	60%	59%
SMG & MSP	821	886	978	1,057	1,063	1,120	8%	5%
PSS	7,569	11,282	7,932	12,154	7,468	11,451	53%	53%
Davis	19,718	26,487	21,037	28,239	20,999	28,239	100%	100%
Unclassified	0	0	0	0	0	0	0%	0%
Academic	5,773	7,846	5,950	8,118	6,092	8,320	29%	29%
Non-Academic	13,945	18,641	15,087	20,121	14,907	19,919	71%	71%
SMG & MSP	776	855	877	969	866	941	4%	3%
PSS	13,169	17,786	14,210	19,152	14,041	18,978	67%	67%
Irvine	11,721	15,953	12,793	17,575	12,712	17,493	100%	100%
Unclassified	0	0	0	0	0	0	0%	0%
Academic	3,868	5,381	4,112	5,756	4,075	5,689	32%	33%
Non-Academic	7,853	10,572	8,681	11,819	8,637	11,804	68%	67%
SMG & MSP	598	632	727	773	720	749	6%	4%
PSS	7,255	9,940	7,954	11,046	7,917	11,055	62%	63%
Los Angeles	26,802	36,991	29,203	39,431	29,305	39,320	100%	100%
Unclassified	0	0	0	0	0	0	0%	0%
Academic	7,241	10,206	7,682	10,735	7,610	10,470	26%	27%
Non-Academic	19,561	26,785	21,521	28,696	21,695	28,850	74%	73%
SMG & MSP	1,441	1,588	1,647	1,802	1,738	1,873	6%	5%
PSS	18,120	25,197	19,874	26,894	19,957	26,977	68%	69%

Table 10: Personnel FTE and Headcount by Campus and Personnel Program

	October 2005		October 2008		October 2009		October 2009 Percentage of Total	
	FTE	Headcount	FTE	Headcount	FTE	Headcount	FTE	Headcount
Merced	488	663	999	1,500	1,083	1,644	100%	100%
Unclassified	118	134	5	5	4	4	0%	0%
Academic	115	141	309	435	345	499	32%	30%
Non-Academic	255	388	685	1,060	734	1,141	68%	69%
SMG & MSP	62	66	124	129	137	138	13%	8%
PSS	193	322	561	931	597	1,003	55%	61%
Riverside	4,369	6,515	4,848	7,321	4,818	7,321	100%	100%
Unclassified	0	0	1	0	0	0	0%	0%
Academic	1,737	2,575	1,918	2,863	1,930	2,868	40%	39%
Non-Academic	2,632	3,940	2,929	4,458	2,888	4,453	60%	61%
SMG & MSP	200	214	234	249	227	238	5%	3%
PSS	2,432	3,726	2,695	4,209	2,661	4,215	55%	58%
San Diego	17,137	23,455	19,023	25,782	19,612	26,280	100%	100%
Unclassified	0	0	0	0	0	0	0%	0%
Academic	4,793	6,853	5,267	7,407	5,678	7,948	29%	30%
Non-Academic	12,344	16,602	13,756	18,375	13,934	18,332	71%	70%
SMG & MSP	880	979	1,087	1,203	1,117	1,234	6%	5%
PSS	11,464	15,623	12,669	17,172	12,817	17,098	65%	65%
San Francisco	16,722	19,678	18,689	21,916	18,813	21,903	100%	100%
Unclassified	0	0	0	0	0	0	0%	0%
Academic	4,380	5,185	4,796	5,598	4,873	5,698	26%	26%
Non-Academic	12,342	14,493	13,893	16,318	13,940	16,205	74%	74%
SMG & MSP	991	1,145	1,314	1,493	1,366	1,540	7%	7%
PSS	11,351	13,348	12,579	14,825	12,574	14,665	67%	67%
Santa Barbara	6,006	9,578	6,230	10,164	6,095	9,960	100%	100%
Unclassified	0	0	0	0	0	0	0%	0%
Academic	2,365	3,500	2,426	3,621	2,416	3,596	40%	36%
Non-Academic	3,641	6,078	3,804	6,543	3,679	6,364	60%	64%
SMG & MSP	263	284	352	377	343	369	6%	4%
PSS	3,378	5,794	3,452	6,166	3,336	5,995	55%	60%
Santa Cruz	4,362	6,985	4,720	7,587	4,489	7,140	100%	100%
Unclassified	0	0	0	0	0	0	0%	0%
Academic	1,474	2,330	1,595	2,542	1,529	2,459	34%	34%
Non-Academic	2,888	4,655	3,125	5,045	2,960	4,681	66%	66%
SMG & MSP	231	245	327	345	326	345	7%	5%
PSS	2,657	4,410	2,798	4,700	2,634	4,336	59%	61%
University Total	123,998	170,443	134,912	184,982	134,644	183,667	100%	100%
Unclassified	118	134	6	5	4	4	0%	0%
Academic	37,431	53,005	40,064	56,518	40,581	56,911	30%	31%
Non-Academic	86,449	117,304	94,842	128,459	94,059	126,752	70%	69%
SMG & MSP	6,879	7,543	8,229	8,981	8,470	9,124	6%	5%
PSS	79,571	109,761	86,613	119,478	85,589	117,628	64%	64%

Table 11a: Personnel Headcount by Ethnicity, Personnel Program, and Gender: Berkeley

	Oct 2008			Oct 2009			Percent Change
	Female	Male	Total	Female	Male	Total	
American Indian	80	43	123	59	31	90	-27%
Unclassified	1	0	1	0	1	1	0%
Academic	23	15	38	18	12	30	-21%
Non-Academic	56	28	84	41	18	59	-30%
SMG & MSP	0	2	2	0	0	0	-100%
PSS	56	26	82	41	18	59	-28%
Asian	3,196	2,613	5,809	2,507	2,079	4,586	-21%
Unclassified	30	16	46	27	23	50	9%
Academic	867	1,261	2,128	671	1,011	1,682	-21%
Non-Academic	2,299	1,336	3,635	1,809	1,045	2,854	-21%
SMG & MSP	61	69	130	62	74	136	5%
PSS	2,238	1,267	3,505	1,747	971	2,718	-22%
African American	956	578	1,534	798	473	1,271	-17%
Unclassified	6	2	8	3	0	3	-63%
Academic	118	102	220	93	84	177	-20%
Non-Academic	832	474	1,306	702	389	1,091	-16%
SMG & MSP	32	30	62	39	29	68	10%
PSS	800	444	1,244	663	360	1,023	-18%
Hispanic	1,169	1,001	2,170	997	816	1,813	-16%
Unclassified	6	6	12	3	4	7	-42%
Academic	211	287	498	164	221	385	-23%
Non-Academic	952	708	1,660	830	591	1,421	-14%
SMG & MSP	19	25	44	23	26	49	11%
PSS	933	683	1,616	807	565	1,372	-15%
White	5,306	5,830	11,136	4,519	4,946	9,465	-15%
Unclassified	17	13	30	15	18	33	10%
Academic	2,082	3,271	5,353	1,775	2,814	4,589	-14%
Non-Academic	3,207	2,546	5,753	2,729	2,114	4,843	-16%
SMG & MSP	334	432	766	366	447	813	6%
PSS	2,873	2,114	4,987	2,363	1,667	4,030	-19%
Unknown/Not Stated	709	629	1,338	2,211	2,001	4,212	215%
Unclassified	5	8	13	29	21	50	285%
Academic	302	361	663	918	1,085	2,003	202%
Non-Academic	402	260	662	1,264	895	2,159	226%
SMG & MSP	19	33	52	18	32	50	-4%
PSS	383	227	610	1,246	863	2,109	246%
Campus Total	11,416	10,694	22,110	11,091	10,346	21,437	-3%
Unclassified	65	45	110	77	67	144	31%
Academic	3,603	5,297	8,900	3,639	5,227	8,866	0%
Non-Academic	7,748	5,352	13,100	7,375	5,052	12,427	-5%
SMG & MSP	465	591	1,056	508	608	1,116	6%
PSS	7,283	4,761	12,044	6,867	4,444	11,311	-6%

Table 11b: Personnel Headcount by Ethnicity, Personnel Program, and Gender: Davis

	Oct 2008			Oct 2009			Percent Change
	Female	Male	Total	Female	Male	Total	
American Indian	151	70	221	153	65	218	-1%
Unclassified	0	0	0	1	0	1	0%
Academic	27	21	48	30	21	51	6%
Non-Academic	124	49	173	122	44	166	-4%
SMG & MSP	3	2	5	3	1	4	-20%
PSS	121	47	168	119	43	162	-4%
Asian	3,682	2,783	6,465	3,715	2,753	6,468	0%
Unclassified	12	9	21	2	1	3	-86%
Academic	945	1,192	2,137	965	1,183	2,148	1%
Non-Academic	2,725	1,582	4,307	2,748	1,569	4,317	0%
SMG & MSP	56	76	132	61	68	129	-2%
PSS	2,669	1,506	4,175	2,687	1,501	4,188	0%
African American	896	457	1,353	888	457	1,345	-1%
Unclassified	4	1	5	0	0	0	-100%
Academic	78	74	152	83	78	161	6%
Non-Academic	814	382	1,196	805	379	1,184	-1%
SMG & MSP	25	16	41	25	12	37	-10%
PSS	789	366	1,155	780	367	1,147	-1%
Hispanic	1,835	1,188	3,023	1,876	1,176	3,052	1%
Unclassified	5	3	8	2	0	2	-75%
Academic	199	250	449	206	267	473	5%
Non-Academic	1,631	935	2,566	1,668	909	2,577	0%
SMG & MSP	36	27	63	36	28	64	2%
PSS	1,595	908	2,503	1,632	881	2,513	0%
White	9,333	6,565	15,898	9,170	6,581	15,751	-1%
Unclassified	22	13	35	6	3	9	-74%
Academic	2,056	2,781	4,837	2,076	2,814	4,890	1%
Non-Academic	7,255	3,771	11,026	7,088	3,764	10,852	-2%
SMG & MSP	367	341	708	353	337	690	-3%
PSS	6,888	3,430	10,318	6,735	3,427	10,162	-2%
Unknown/Not Stated	705	574	1,279	760	645	1,405	10%
Unclassified	3	3	6	0	1	1	-83%
Academic	211	287	498	259	338	597	20%
Non-Academic	491	284	775	501	306	807	4%
SMG & MSP	6	8	14	7	9	16	14%
PSS	485	276	761	494	297	791	4%
Total Campus	16,602	11,637	28,239	16,562	11,677	28,239	0%
Unclassified	46	29	75	11	5	16	-79%
Academic	3,516	4,605	8,121	3,619	4,701	8,320	2%
Non-Academic	13,040	7,003	20,043	12,932	6,971	19,903	-1%
SMG & MSP	493	470	963	485	455	940	-2%
PSS	12,547	6,533	19,080	12,447	6,516	18,963	-1%

Table 11c: Personnel Headcount by Ethnicity, Personnel Program, and Gender: Irvine

	Oct 2008			Oct 2009			Percent Change
	Female	Male	Total	Female	Male	Total	
American Indian	46	38	84	39	30	69	-18%
Unclassified	0	0	0	0	0	0	0%
Academic	11	15	26	7	11	18	-31%
Non-Academic	35	23	58	32	19	51	-12%
SMG & MSP	4	2	6	3	3	6	0%
PSS	31	21	52	29	16	45	-13%
Asian	3,143	2,308	5,451	3,092	2,270	5,362	-2%
Unclassified	8	7	15	2	1	3	-80%
Academic	697	1,051	1,748	683	1,057	1,740	0%
Non-Academic	2,438	1,250	3,688	2,407	1,212	3,619	-2%
SMG & MSP	76	51	127	76	45	121	-5%
PSS	2,362	1,199	3,561	2,331	1,167	3,498	-2%
African American	333	199	532	324	198	522	-2%
Unclassified	0	0	0	1	0	1	0%
Academic	58	43	101	58	40	98	-3%
Non-Academic	275	156	431	265	158	423	-2%
SMG & MSP	15	13	28	15	12	27	-4%
PSS	260	143	403	250	146	396	-2%
Hispanic	1,771	1,015	2,786	1,810	1,081	2,891	4%
Unclassified	5	3	8	0	0	0	-100%
Academic	166	202	368	155	206	361	-2%
Non-Academic	1,600	810	2,410	1,655	875	2,530	5%
SMG & MSP	28	27	55	29	23	52	-5%
PSS	1,572	783	2,355	1,626	852	2,478	5%
White	4,419	3,462	7,881	4,266	3,412	7,678	-3%
Unclassified	6	8	14	4	5	9	-36%
Academic	1,366	1,971	3,337	1,325	1,967	3,292	-1%
Non-Academic	3,047	1,483	4,530	2,937	1,440	4,377	-3%
SMG & MSP	302	240	542	285	243	528	-3%
PSS	2,745	1,243	3,988	2,652	1,197	3,849	-3%
Unknown/Not Stated	501	340	841	556	415	971	15%
Unclassified	1	1	2	2	1	3	50%
Academic	88	88	176	83	97	180	2%
Non-Academic	412	251	663	471	317	788	19%
SMG & MSP	6	6	12	5	7	12	0%
PSS	406	245	651	466	310	776	19%
Total Campus	10,213	7,362	17,575	10,087	7,406	17,493	0%
Unclassified	20	19	39	9	7	16	-59%
Academic	2,386	3,370	5,756	2,311	3,378	5,689	-1%
Non-Academic	7,807	3,973	11,780	7,767	4,021	11,788	0%
SMG & MSP	431	339	770	413	333	746	-3%
PSS	7,376	3,634	11,010	7,354	3,688	11,042	0%

Table 11d: Personnel Headcount by Ethnicity, Personnel Program, and Gender: Los Angeles

	Oct 2008			Oct 2009			Percent Change
	Female	Male	Total	Female	Male	Total	
American Indian	107	58	165	103	57	160	-3%
Unclassified	0	0	0	0	0	0	0%
Academic	20	14	34	16	12	28	-18%
Non-Academic	87	44	131	87	45	132	1%
SMG & MSP	5	6	11	5	7	12	9%
PSS	82	38	120	82	38	120	0%
Asian	6,031	4,603	10,634	5,985	4,483	10,468	-2%
Unclassified	41	33	74	20	20	40	-46%
Academic	1,319	1,903	3,222	1,333	1,833	3,166	-2%
Non-Academic	4,671	2,667	7,338	4,632	2,630	7,262	-1%
SMG & MSP	161	188	349	172	197	369	6%
PSS	4,510	2,479	6,989	4,460	2,433	6,893	-1%
African American	2,514	1,291	3,805	2,492	1,266	3,758	-1%
Unclassified	6	2	8	2	1	3	-63%
Academic	170	122	292	157	122	279	-4%
Non-Academic	2,338	1,167	3,505	2,333	1,143	3,476	-1%
SMG & MSP	65	42	107	60	47	107	0%
PSS	2,273	1,125	3,398	2,273	1,096	3,369	-1%
Hispanic	4,080	2,877	6,957	4,159	2,917	7,076	2%
Unclassified	16	12	28	13	7	20	-29%
Academic	310	324	634	312	327	639	1%
Non-Academic	3,754	2,541	6,295	3,834	2,583	6,417	2%
SMG & MSP	69	55	124	81	63	144	16%
PSS	3,685	2,486	6,171	3,753	2,520	6,273	2%
White	8,665	7,478	16,143	8,708	7,367	16,075	0%
Unclassified	47	41	88	26	34	60	-32%
Academic	2,293	3,673	5,966	2,223	3,541	5,764	-3%
Non-Academic	6,325	3,764	10,089	6,459	3,792	10,251	2%
SMG & MSP	605	547	1,152	639	552	1,191	3%
PSS	5,720	3,217	8,937	5,820	3,240	9,060	1%
Unknown/Not Stated	981	746	1,727	1,003	780	1,783	3%
Unclassified	19	16	35	15	11	26	-26%
Academic	237	350	587	233	361	594	1%
Non-Academic	725	380	1,105	755	408	1,163	5%
SMG & MSP	22	32	54	24	25	49	-9%
PSS	703	348	1,051	731	383	1,114	6%
Total Campus	22,378	17,053	39,431	22,450	16,870	39,320	0%
Unclassified	129	104	233	76	73	149	-36%
Academic	4,349	6,386	10,735	4,274	6,196	10,470	-2%
Non-Academic	17,900	10,563	28,463	18,100	10,601	28,701	1%
SMG & MSP	927	870	1,797	981	891	1,872	4%
PSS	16,973	9,693	26,666	17,119	9,710	26,829	1%

Table 11e: Personnel Headcount by Ethnicity, Personnel Program, and Gender: Merced

	Oct 2008			Oct 2009			Percent Change
	Female	Male	Total	Female	Male	Total	
American Indian	9	4	13	11	5	16	23%
Unclassified	0	0	0	0	0	0	0%
Academic	2	1	3	3	1	4	33%
Non-Academic	7	3	10	8	4	12	20%
SMG & MSP	0	0	0	0	0	0	0%
PSS	7	3	10	8	4	12	20%
Asian	143	166	309	150	177	327	6%
Unclassified	2	2	4	0	1	1	-75%
Academic	36	73	109	42	81	123	13%
Non-Academic	105	91	196	108	95	203	4%
SMG & MSP	5	7	12	5	7	12	0%
PSS	100	84	184	103	88	191	4%
African American	40	22	62	51	25	76	23%
Unclassified	0	0	0	0	1	1	0%
Academic	2	2	4	1	4	5	25%
Non-Academic	38	20	58	50	20	70	21%
SMG & MSP	3	2	5	3	2	5	0%
PSS	35	18	53	47	18	65	23%
Hispanic	187	165	352	211	181	392	11%
Unclassified	1	1	2	1	1	2	0%
Academic	22	37	59	25	39	64	8%
Non-Academic	164	127	291	185	141	326	12%
SMG & MSP	12	11	23	11	11	22	-4%
PSS	152	116	268	174	130	304	13%
White	367	338	705	398	375	773	10%
Unclassified	3	0	3	1	1	2	-33%
Academic	101	143	244	120	166	286	17%
Non-Academic	263	195	458	277	208	485	6%
SMG & MSP	42	41	83	50	44	94	13%
PSS	221	154	375	227	164	391	4%
Unknown/Not Stated	25	34	59	25	35	60	2%
Unclassified	0	1	1	0	1	1	0%
Academic	3	13	16	5	12	17	6%
Non-Academic	22	20	42	20	22	42	0%
SMG & MSP	3	3	6	2	3	5	-17%
PSS	19	17	36	18	19	37	3%
Total Campus	771	729	1,500	846	798	1,644	10%
Unclassified	6	4	10	2	5	7	-30%
Academic	166	269	435	196	303	499	15%
Non-Academic	599	456	1,055	648	490	1,138	8%
SMG & MSP	65	64	129	71	67	138	7%
PSS	534	392	926	577	423	1,000	8%

Table 11f: Personnel Headcount by Ethnicity, Personnel Program, and Gender: Riverside

	Oct 2008			Oct 2009			Percent Change
	Female	Male	Total	Female	Male	Total	
American Indian	23	17	40	24	16	40	0%
Unclassified	0	0	0	0	0	0	0%
Academic	7	8	15	6	9	15	0%
Non-Academic	16	9	25	18	7	25	0%
SMG & MSP	2	1	3	1	1	2	-33%
PSS	14	8	22	17	6	23	5%
Asian	852	972	1,824	829	932	1,761	-3%
Unclassified	1	0	1	1	2	3	200%
Academic	363	565	928	378	545	923	-1%
Non-Academic	488	407	895	450	385	835	-7%
SMG & MSP	11	9	20	8	11	19	-5%
PSS	477	398	875	442	374	816	-7%
African American	343	187	530	352	192	544	3%
Unclassified	0	0	0	0	1	1	0%
Academic	29	37	66	33	32	65	-2%
Non-Academic	314	150	464	319	159	478	3%
SMG & MSP	6	6	12	6	8	14	17%
PSS	308	144	452	313	151	464	3%
Hispanic	858	597	1,455	938	605	1,543	6%
Unclassified	0	0	0	2	0	2	0%
Academic	103	122	225	116	112	228	1%
Non-Academic	755	475	1,230	820	493	1,313	7%
SMG & MSP	7	15	22	8	13	21	-5%
PSS	748	460	1,208	812	480	1,292	7%
White	1,540	1,648	3,188	1,480	1,658	3,138	-2%
Unclassified	0	0	0	1	0	1	0%
Academic	583	882	1,465	564	894	1,458	0%
Non-Academic	957	766	1,723	915	764	1,679	-3%
SMG & MSP	91	95	186	81	95	176	-5%
PSS	866	671	1,537	834	669	1,503	-2%
Unknown/Not Stated	153	131	284	165	130	295	4%
Unclassified	0	0	0	0	0	0	0%
Academic	85	79	164	94	86	180	10%
Non-Academic	68	52	120	71	44	115	-4%
SMG & MSP	4	2	6	4	2	6	0%
PSS	64	50	114	67	42	109	-4%
Total Campus	3,769	3,552	7,321	3,788	3,533	7,321	0%
Unclassified	1	0	1	4	3	7	600%
Academic	1,170	1,693	2,863	1,191	1,678	2,869	0%
Non-Academic	2,598	1,859	4,457	2,593	1,852	4,445	0%
SMG & MSP	121	128	249	108	130	238	-4%
PSS	2,477	1,731	4,208	2,485	1,722	4,207	0%

Table 11g: Personnel Headcount by Ethnicity, Personnel Program, and Gender: San Diego

	Oct 2008			Oct 2009			Percent Change
	Female	Male	Total	Female	Male	Total	
American Indian	96	61	157	89	59	148	-6%
Unclassified	0	1	1	0	0	0	-100%
Academic	22	21	43	18	18	36	-16%
Non-Academic	74	39	113	71	41	112	-1%
SMG & MSP	1	1	2	2	1	3	50%
PSS	73	38	111	69	40	109	-2%
Asian	3,726	2,879	6,605	3,745	3,003	6,748	2%
Unclassified	18	14	32	8	2	10	-69%
Academic	672	1,172	1,844	753	1,304	2,057	12%
Non-Academic	3,036	1,693	4,729	2,984	1,697	4,681	-1%
SMG & MSP	74	74	148	79	85	164	11%
PSS	2,962	1,619	4,581	2,905	1,612	4,517	-1%
African American	650	420	1,070	659	402	1,061	-1%
Unclassified	1	3	4	0	0	0	-100%
Academic	43	51	94	57	47	104	11%
Non-Academic	606	366	972	602	355	957	-2%
SMG & MSP	21	16	37	21	16	37	0%
PSS	585	350	935	581	339	920	-2%
Hispanic	2,113	1,252	3,365	2,136	1,302	3,438	2%
Unclassified	7	4	11	4	3	7	-36%
Academic	159	257	416	181	258	439	6%
Non-Academic	1,947	991	2,938	1,951	1,041	2,992	2%
SMG & MSP	41	28	69	42	33	75	9%
PSS	1,906	963	2,869	1,909	1,008	2,917	2%
White	6,719	5,941	12,660	6,748	6,101	12,849	1%
Unclassified	18	16	34	11	8	19	-44%
Academic	1,560	2,764	4,324	1,637	2,904	4,541	5%
Non-Academic	5,141	3,161	8,302	5,100	3,189	8,289	0%
SMG & MSP	420	481	901	420	492	912	1%
PSS	4,721	2,680	7,401	4,680	2,697	7,377	0%
Unknown/Not Stated	1,030	895	1,925	1,094	942	2,036	6%
Unclassified	2	7	9	1	4	5	-44%
Academic	289	400	689	313	458	771	12%
Non-Academic	739	488	1,227	780	480	1,260	3%
SMG & MSP	15	26	41	15	26	41	0%
PSS	724	462	1,186	765	454	1,219	3%
Total Campus	14,334	11,448	25,782	14,471	11,809	26,280	2%
Unclassified	46	45	91	24	17	41	-55%
Academic	2,745	4,665	7,410	2,959	4,989	7,948	7%
Non-Academic	11,543	6,738	18,281	11,488	6,803	18,291	0%
SMG & MSP	572	626	1,198	579	653	1,232	3%
PSS	10,971	6,112	17,083	10,909	6,150	17,059	0%

Table 11h: Personnel Headcount by Ethnicity, Personnel Program, and Gender: San Francisco

	Oct 2008			Oct 2009			Percent Change
	Female	Male	Total	Female	Male	Total	
American Indian	62	33	95	55	38	93	-2%
Unclassified	0	0	0	1	1	2	0%
Academic	11	6	17	8	9	17	0%
Non-Academic	51	27	78	46	28	74	-5%
SMG & MSP	7	2	9	4	2	6	-33%
PSS	44	25	69	42	26	68	-1%
Asian	4,705	2,736	7,441	4,698	2,754	7,452	0%
Unclassified	20	10	30	16	7	23	-23%
Academic	872	816	1,688	887	806	1,693	0%
Non-Academic	3,813	1,910	5,723	3,795	1,941	5,736	0%
SMG & MSP	169	162	331	165	173	338	2%
PSS	3,644	1,748	5,392	3,630	1,768	5,398	0%
African American	874	458	1,332	861	429	1,290	-3%
Unclassified	1	4	5	3	4	7	40%
Academic	78	60	138	79	58	137	-1%
Non-Academic	795	394	1,189	779	367	1,146	-4%
SMG & MSP	41	20	61	43	20	63	3%
PSS	754	374	1,128	736	347	1,083	-4%
Hispanic	1,321	780	2,101	1,353	788	2,141	2%
Unclassified	5	6	11	5	1	6	-45%
Academic	119	137	256	145	139	284	11%
Non-Academic	1,197	637	1,834	1,203	648	1,851	1%
SMG & MSP	34	40	74	36	45	81	9%
PSS	1,163	597	1,760	1,167	603	1,770	1%
White	6,413	3,979	10,392	6,379	3,949	10,328	-1%
Unclassified	37	23	60	28	16	44	-27%
Academic	1,491	1,837	3,328	1,541	1,838	3,379	2%
Non-Academic	4,885	2,119	7,004	4,810	2,095	6,905	-1%
SMG & MSP	559	430	989	578	439	1,017	3%
PSS	4,326	1,689	6,015	4,232	1,656	5,888	-2%
Unknown/Not Stated	338	217	555	384	215	599	8%
Unclassified	4	3	7	9	2	11	57%
Academic	73	98	171	91	98	189	11%
Non-Academic	261	116	377	284	115	399	6%
SMG & MSP	10	6	16	10	8	18	13%
PSS	251	110	361	274	107	381	6%
Total Campus	13,713	8,203	21,916	13,730	8,173	21,903	0%
Unclassified	67	46	113	62	31	93	-18%
Academic	2,644	2,954	5,598	2,751	2,948	5,699	2%
Non-Academic	11,002	5,203	16,205	10,917	5,194	16,111	-1%
SMG & MSP	820	660	1,480	836	687	1,523	3%
PSS	10,182	4,543	14,725	10,081	4,507	14,588	-1%

Table 11i: Personnel Headcount by Ethnicity, Personnel Program, and Gender: Santa Barbara

	Oct 2008			Oct 2009			Percent Change
	Female	Male	Total	Female	Male	Total	
American Indian	41	34	75	38	30	68	-9%
Unclassified	0	0	0	0	0	0	0%
Academic	12	9	21	11	8	19	-10%
Non-Academic	29	25	54	27	22	49	-9%
SMG & MSP	2	1	3	2	1	3	0%
PSS	27	24	51	25	21	46	-10%
Asian	684	658	1,342	625	635	1,260	-6%
Unclassified	0	0	0	2	0	2	0%
Academic	206	361	567	205	369	574	1%
Non-Academic	478	297	775	418	266	684	-12%
SMG & MSP	8	11	19	9	11	20	5%
PSS	470	286	756	409	255	664	-12%
African American	168	117	285	171	131	302	6%
Unclassified	0	0	0	0	0	0	0%
Academic	28	31	59	32	34	66	12%
Non-Academic	140	86	226	139	97	236	4%
SMG & MSP	5	5	10	4	6	10	0%
PSS	135	81	216	135	91	226	5%
Hispanic	951	780	1,731	962	765	1,727	0%
Unclassified	2	1	3	2	2	4	33%
Academic	113	125	238	100	128	228	-4%
Non-Academic	836	654	1,490	860	635	1,495	0%
SMG & MSP	9	12	21	11	13	24	14%
PSS	827	642	1,469	849	622	1,471	0%
White	2,823	3,082	5,905	2,759	3,051	5,810	-2%
Unclassified	6	11	17	10	12	22	29%
Academic	865	1,451	2,316	853	1,449	2,302	-1%
Non-Academic	1,952	1,620	3,572	1,896	1,590	3,486	-2%
SMG & MSP	141	181	322	132	178	310	-4%
PSS	1,811	1,439	3,250	1,764	1,412	3,176	-2%
Unknown/Not Stated	368	458	826	372	421	793	-4%
Unclassified	4	3	7	1	1	2	-71%
Academic	142	278	420	148	259	407	-3%
Non-Academic	222	177	399	223	161	384	-4%
SMG & MSP	1	1	2	1	1	2	0%
PSS	221	176	397	222	160	382	-4%
Total Campus	5,035	5,129	10,164	4,927	5,033	9,960	-2%
Unclassified	12	15	27	15	15	30	11%
Academic	1,366	2,255	3,621	1,349	2,247	3,596	-1%
Non-Academic	3,657	2,859	6,516	3,563	2,771	6,334	-3%
SMG & MSP	166	211	377	159	210	369	-2%
PSS	3,491	2,648	6,139	3,404	2,561	5,965	-3%

Table 11j: Personnel Headcount by Ethnicity, Personnel Program, and Gender: Santa Cruz

	Oct 2008			Oct 2009			Percent Change
	Female	Male	Total	Female	Male	Total	
American Indian	34	16	50	32	21	53	6%
Unclassified	0	0	0	0	0	0	0%
Academic	14	2	16	19	5	24	50%
Non-Academic	20	14	34	13	16	29	-15%
SMG & MSP	0	2	2	0	2	2	0%
PSS	20	12	32	13	14	27	-16%
Asian	478	450	928	443	389	832	-10%
Unclassified	0	0	0	1	0	1	0%
Academic	164	192	356	164	169	333	-6%
Non-Academic	314	258	572	278	220	498	-13%
SMG & MSP	7	35	42	10	38	48	14%
PSS	307	223	530	268	182	450	-15%
African American	97	95	192	90	86	176	-8%
Unclassified	1	0	1	0	0	0	-100%
Academic	17	23	40	10	23	33	-18%
Non-Academic	79	72	151	80	63	143	-5%
SMG & MSP	3	2	5	1	2	3	-40%
PSS	76	70	146	79	61	140	-4%
Hispanic	686	487	1,173	633	450	1,083	-8%
Unclassified	0	0	0	0	3	3	0%
Academic	114	86	200	105	88	193	-4%
Non-Academic	572	401	973	528	359	887	-9%
SMG & MSP	7	12	19	8	10	18	-5%
PSS	565	389	954	520	349	869	-9%
White	2,382	2,039	4,421	2,158	1,920	4,078	-8%
Unclassified	8	4	12	2	2	4	-67%
Academic	719	843	1,562	639	830	1,469	-6%
Non-Academic	1,655	1,192	2,847	1,517	1,088	2,605	-9%
SMG & MSP	102	166	268	98	166	264	-1%
PSS	1,553	1,026	2,579	1,419	922	2,341	-9%
Unknown/Not Stated	435	388	823	476	442	918	12%
Unclassified	0	0	0	0	2	2	0%
Academic	163	206	369	173	234	407	10%
Non-Academic	272	182	454	303	206	509	12%
SMG & MSP	3	6	9	3	7	10	11%
PSS	269	176	445	300	199	499	12%
Total Campus	4,112	3,475	7,587	3,832	3,308	7,140	-6%
Unclassified	9	4	13	3	7	10	-23%
Academic	1,191	1,352	2,543	1,110	1,349	2,459	-3%
Non-Academic	2,912	2,119	5,031	2,719	1,952	4,671	-7%
SMG & MSP	122	223	345	120	225	345	0%
PSS	2,790	1,896	4,686	2,599	1,727	4,326	-8%

Table 11k: Personnel Headcount by Ethnicity, Personnel Program, and Gender: Office of the President

	Oct 2008			Oct 2009			Percent Change
	Female	Male	Total	Female	Male	Total	
American Indian	6	1	7	6	0	6	-14%
Unclassified	0	0	0	0	0	0	0%
Academic	0	0	0	0	0	0	0%
Non-Academic	6	1	7	6	0	6	-14%
SMG & MSP	2	1	3	3	0	3	0%
PSS	4	0	4	3	0	3	-25%
Asian	234	121	355	207	104	311	-12%
Unclassified	0	0	0	0	0	0	0%
Academic	2	10	12	1	5	6	-50%
Non-Academic	232	111	343	206	99	305	-11%
SMG & MSP	55	30	85	53	32	85	0%
PSS	177	81	258	153	67	220	-15%
African American	164	57	221	147	50	197	-11%
Unclassified	0	0	0	0	0	0	0%
Academic	2	0	2	0	0	0	-100%
Non-Academic	162	57	219	147	50	197	-10%
SMG & MSP	13	15	28	19	16	35	25%
PSS	149	42	191	128	34	162	-15%
Hispanic	96	40	136	88	37	125	-8%
Unclassified	0	0	0	0	0	0	0%
Academic	3	1	4	0	0	0	-100%
Non-Academic	93	39	132	88	37	125	-5%
SMG & MSP	16	11	27	22	13	35	30%
PSS	77	28	105	66	24	90	-14%
White	620	439	1,059	503	353	856	-19%
Unclassified	4	0	4	0	0	0	-100%
Academic	16	41	57	17	23	40	-30%
Non-Academic	600	398	998	486	330	816	-18%
SMG & MSP	194	187	381	187	173	360	-6%
PSS	406	211	617	299	157	456	-26%
Unknown/Not Stated	46	36	82	39	41	80	-2%
Unclassified	1	1	2	0	0	0	-100%
Academic	0	0	0	0	2	2	0%
Non-Academic	45	35	80	39	39	78	-3%
SMG & MSP	10	12	22	9	12	21	-5%
PSS	35	23	58	30	27	57	-2%
Total Campus	1,166	694	1,860	990	585	1,575	-15%
Unclassified	5	1	6	0	0	0	-100%
Academic	23	52	75	18	30	48	-36%
Non-Academic	1,138	641	1,779	972	555	1,527	-14%
SMG & MSP	290	256	546	293	246	539	-1%
PSS	848	385	1,233	679	309	988	-20%

Table 11: Personnel Headcount by Ethnicity, Personnel Program, and Gender: Agriculture & Natural Resources

	Oct 2008			Oct 2009			Percent Change
	Female	Male	Total	Female	Male	Total	
American Indian	5	1	6	7	2	9	50%
Unclassified	0	0	0	0	0	0	0%
Academic	0	0	0	0	0	0	0%
Non-Academic	5	1	6	7	2	9	50%
SMG & MSP	0	0	0	1	0	1	0%
PSS	5	1	6	6	2	8	33%
Asian	93	61	154	81	49	130	-16%
Unclassified	0	0	0	0	0	0	0%
Academic	15	18	33	13	22	35	6%
Non-Academic	78	43	121	68	27	95	-21%
SMG & MSP	2	2	4	3	1	4	0%
PSS	76	41	117	65	26	91	-22%
African American	42	17	59	35	15	50	-15%
Unclassified	0	0	0	0	0	0	0%
Academic	7	6	13	6	4	10	-23%
Non-Academic	35	11	46	29	11	40	-13%
SMG & MSP	3	1	4	3	1	4	0%
PSS	32	10	42	26	10	36	-14%
Hispanic	142	112	254	122	105	227	-11%
Unclassified	0	0	0	0	0	0	0%
Academic	15	25	40	14	22	36	-10%
Non-Academic	127	87	214	108	83	191	-11%
SMG & MSP	2	1	3	2	1	3	0%
PSS	125	86	211	106	82	188	-11%
White	591	411	1,002	529	380	909	-9%
Unclassified	1	0	1	0	0	0	-100%
Academic	158	218	376	152	207	359	-5%
Non-Academic	432	193	625	377	173	550	-12%
SMG & MSP	11	16	27	15	11	26	-4%
PSS	421	177	598	362	162	524	-12%
Unknown/Not Stated	10	12	22	16	14	30	36%
Unclassified	0	0	0	0	1	1	0%
Academic	3	4	7	4	6	10	43%
Non-Academic	7	8	15	12	7	19	27%
SMG & MSP	0	0	0	0	0	0	0%
PSS	7	8	15	12	7	19	27%
Total President and ANR	2,049	1,308	3,357	1,780	1,150	2,930	-13%
Unclassified	6	1	7	0	1	1	-86%
Academic	221	323	544	207	291	498	-8%
Non-Academic	1,822	984	2,806	1,573	858	2,431	-13%
SMG & MSP	308	276	584	317	260	577	-1%
PSS	1,514	708	2,222	1,256	598	1,854	-17%

Table 11m: Personnel Headcount by Ethnicity, Personnel Program, and Gender: University Total

	Oct 2008			Oct 2009			Percent Change
	Female	Male	Total	Female	Male	Total	
American Indian	660	376	1,036	616	354	970	-6%
Unclassified	1	1	2	2	2	4	100%
Academic	149	112	261	136	106	242	-7%
Non-Academic	510	263	773	478	246	724	-6%
SMG & MSP	26	20	46	24	18	42	-9%
PSS	484	243	727	454	228	682	-6%
Asian	26,967	20,350	47,317	26,077	19,628	45,705	-3%
Unclassified	132	91	223	79	57	136	-39%
Academic	6,158	8,614	14,772	6,095	8,385	14,480	-2%
Non-Academic	20,677	11,645	32,322	19,903	11,186	31,089	-4%
SMG & MSP	685	714	1,399	703	742	1,445	3%
PSS	19,992	10,931	30,923	19,200	10,444	29,644	-4%
African American	7,077	3,898	10,975	6,868	3,724	10,592	-3%
Unclassified	19	12	31	9	7	16	-48%
Academic	630	551	1,181	609	526	1,135	-4%
Non-Academic	6,428	3,335	9,763	6,250	3,191	9,441	-3%
SMG & MSP	232	168	400	239	171	410	3%
PSS	6,196	3,167	9,363	6,011	3,020	9,031	-4%
Hispanic	15,209	10,294	25,503	15,285	10,223	25,508	0%
Unclassified	47	36	83	32	21	53	-36%
Academic	1,534	1,853	3,387	1,523	1,807	3,330	-2%
Non-Academic	13,628	8,405	22,033	13,730	8,395	22,125	0%
SMG & MSP	280	264	544	309	279	588	8%
PSS	13,348	8,141	21,489	13,421	8,116	21,537	0%
White	49,178	41,212	90,390	47,617	40,093	87,710	-3%
Unclassified	169	129	298	104	99	203	-32%
Academic	13,290	19,875	33,165	12,922	19,447	32,369	-2%
Non-Academic	35,719	21,208	56,927	34,591	20,547	55,138	-3%
SMG & MSP	3,168	3,157	6,325	3,204	3,177	6,381	1%
PSS	32,551	18,051	50,602	31,387	17,370	48,757	-4%
Unknown/Not Stated	5,301	4,460	9,761	7,101	6,081	13,182	35%
Unclassified	39	43	82	57	45	102	24%
Academic	1,596	2,164	3,760	2,321	3,036	5,357	42%
Non-Academic	3,666	2,253	5,919	4,723	3,000	7,723	30%
SMG & MSP	99	135	234	98	132	230	-2%
PSS	3,567	2,118	5,685	4,625	2,868	7,493	32%
Total University	104,392	80,590	184,982	103,564	80,103	183,667	-1%
Unclassified	407	312	719	283	231	514	-29%
Academic	23,357	33,169	56,526	23,606	33,307	56,913	1%
Non-Academic	80,628	47,109	127,737	79,675	46,565	126,240	-1%
SMG & MSP	4,490	4,458	8,948	4,577	4,519	9,096	2%
PSS	76,138	42,651	118,789	75,098	42,046	117,144	-1%

Explanatory Notes

1. All enrollment counts consist of students who are registered at the end of the third week of classes. Students in the Education Abroad Program are included in the enrollment of each campus.
2. Undergraduate students who have met all the requirements for admission to the university are classified according to the number of units of credit completed as follows:

Freshman	between 0 and 44.9 quarter units (0-29.9 semester units);
Sophomore	at least 45 but not more than 89.9 quarter units (30-59.9 semester units);
Junior	at least 90 but not more than 134.9 quarter units (60-89.9 semester units);
Senior	at least 135 quarter units (90 or more semester units).

In addition to those students who have met all of the requirements for admission to the university are Special, Limited, and Postbaccalaureate students who are defined as follows:

Special	lower division students of mature years who have not had the opportunity to complete a satisfactory high school program, who have not completed a substantial amount of college work, and who, by reason of special attainments, may be prepared to undertake courses in the university toward a definite and limited objective;
Limited	upper division students with bachelor's degrees who are not candidates for an advanced degree or those without bachelor's degrees who have completed a substantial amount of college work and who, by reason of special attainments, may be prepared to undertake certain courses in the university toward a definite and limited objective;
Postbaccalaureate	students who hold a baccalaureate degree whose sole objective is a teacher education credential.

For tables in this report, undergraduates in the groups above are aggregated into the following categories:

Lower Division	freshmen, sophomores, and special students;
Upper Division	juniors, seniors, and limited students;
Postbaccalaureate	postbaccalaureate students.

3. Graduate students are those students holding a bachelor's degree or its equivalent who have been admitted to the Graduate Division and who are working toward a higher degree or credential. Graduate students are classified according to degree objective and progress toward the degree as follows:

Master's	students working toward a master's degree, a certification credential, or a non-doctoral first professional degree (e.g., Juris Doctor, Master of Business Administration), and students who have no degree objective;
First Doctoral	students working toward an academic or professional doctorate (e.g., Doctor of Medicine, Doctor of Dental Science) who have not been advanced to candidacy;
Second Doctoral	students working toward an academic or professional doctorate who have been advanced to candidacy.

For enrollment tables in this report, graduate students in the groups above are aggregated into the following categories:

First Stage	master's and first doctoral students;
-------------	---------------------------------------

Second Stage second doctoral students.

4. Full-time status and part-time status of students registered at the University are defined as follows:

Full-time undergraduate students enrolled for 12 or more units of credit in a given term,
first stage graduate students enrolled for 8 or more units of credit in a given term, and
second stage graduate students;

Part-time undergraduate students enrolled for fewer than 12 units of credit in a term, and
first stage graduate students enrolled for fewer than 8 units of credit in a term.

5. The registration status of students registered at the University is classified as follows:

New students enrolled for the first time in regular session;

Continuing students enrolled in regular session whose enrollment at the reporting campus has
not been interrupted;

Returning students returning to the reporting campus after an absence of two or more quarters.
For some campuses, a student returning after an absence of one quarter will also be
classified as a returning student.

6. University personnel are classified as follows:

Academic academic administrators, regular teaching faculty, lecturers and other teaching
faculty, student assistants, researchers, librarians, cooperative extension
researchers, university extension faculty, and other academic personnel;

Non-Academic senior management (SMG), management and senior professionals (MSP), and
professional and support staff (PSS).

7. The University's instruction and research programs are organized into two broad categories, general campus and health sciences:

Health Sciences primarily offered through 15 schools providing education and training to students
preparing for careers in clinical care, teaching, and research, as well as selected
other programs;

General Campus all non-health sciences programs are categorized as general campus.