

# 2006 Horizon League Volleyball

## Final 2006 Team Standings

Team	League					Overall				
	W	L	Pct.	GW	GL	W	L	Pct.	GW	GL
Milwaukee*	13	1	.929	40	9	24	6	.800	75	26
UIC	8	6	.571	32	23	17	17	.500	65	64
Cleveland State	8	6	.571	30	19	19	9	.679	68	32
Green Bay	8	6	.571	25	25	15	15	.500	53	60
Wright State	8	6	.571	28	28	14	17	.452	56	64
Loyola	7	7	.500	26	26	14	16	.467	52	60
Butler	3	11	.214	16	36	8	22	.267	36	72
Youngstown State	1	13	.071	10	41	10	22	.312	39	72

\* - 2006 Horizon League Volleyball Champion

NOTE: UIC received the #2 seed based on 14-11 (.560) record in games won/lost against the other three teams tied at 8-6. Cleveland State (12-10, .545) received the #3 seed, followed by Green Bay (10-12, .455) and Wright State (10-13, .435). All four teams finished 3-3 in matches head-to-head.

## Statistical Leaders

Hitting Percentage	G	K	E	TA	Pct
Beth Greulich, CSU	100	276	59	596	.364
Sarah Moore, UWM	101	293	90	624	.325
Ruth Boscaljon, YSU	111	363	122	802	.300
Danielle Siefker, CSU	100	27	107	656	.274
Lindsey Frank, WSU	120	144	35	399	.273
Jamie Gabrielsen, UWM	92	239	83	573	.272
Katie Kozak, UIC	129	166	44	453	.269
Sarah Elmer, LU	109	207	67	526	.266
Cheryl Hegemann, UWM	101	365	138	873	.260
Krystal Hendrix, BU	108	294	87	804	.257

Kills Per Game	GP	Kills	KPG
Ambria Springer, UIC	129	495	3.84
Liz Fazio, CSU	100	372	3.72
Cheryl Hegemann, UWM	101	365	3.61
Katarina Nedeljkovic, UIC	121	414	3.42
Ruth Boscaljon, YSU	111	363	3.27
Melissa David, UWM	96	311	3.24
Abby Bergsma, UWGB	113	363	3.21
Jenny Schultz, WSU	115	352	3.06
Holly Visser, UWGB	113	345	3.05
Alexis Korovich, CSU	98	292	2.98

Assists Per Game	GP	Asst.	APG
Mel Snyder, CSU	100	1227	12.27
Katie Kozak, UIC	129	1476	11.44
Sarah Elmer, LU	109	1164	10.68
Lindsey Frank, WSU	120	1274	10.62
Karla Everhart, YSU	109	1125	10.32
Leanne Felsing, UWM	101	1042	10.32
Betty Slinger, UWGB	113	1030	9.12
Dana Dapirle, BU	102	841	8.25

Service Aces Per Game	GP	Aces	SA/G
Katarina Nedeljkovic, UIC	121	54	0.45
Jenni Ramming, CSU	99	39	0.39
Mel Snyder, CSU	100	37	0.37
Chelsea Lyga, UWGB	92	34	0.37
Cheryl Hegemann, UWM	101	36	0.36
Sarah Rauen, UWGB	113	40	0.35
Alisha Kimbro, WSU	120	40	0.33
Krystal Hendrix, BU	108	35	0.32
Rochelle Meulemans, UWGB	106	34	0.32
Leanne Felsing, UWM	101	32	0.32

Digs Per Game	GP	Digs	DPG
Ann Deelo, LU	112	562	5.02
Megan Elfering, UWGB	100	468	4.68
Jordan Bateman, CSU	98	457	4.66
Sarah Poling, WSU	86	400	4.65
Becky Peters, UWM	100	458	4.58
Julie Popp, UIC	111	474	4.27
Nina Inic, BU	102	417	4.09
Jenny Schultz, WSU	115	447	3.89
Sarah Rauen, UWGB	113	434	3.84
Cari Leslie, YSU	89	337	3.79

Blocks Per Game	GP	BS-BA	Tot	BPG
Lizzy Gunn, WSU	99	15-115	130	1.31
Ambria Springer, UIC	129	46-114	160	1.24
Krystal Hendrix, BU	108	21-111	132	1.22
Ruth Boscaljon, YSU	111	38- 90	128	1.15
Melissa Craig, LU	107	13-107	120	1.12
Abby Bergsma, UWGB	113	9-116	125	1.11
Cheryl Hegemann, UWM	101	12- 99	111	1.10
Danielle Siefker, CSU	100	13- 96	109	1.09
Tara Geegan, WSU	120	14-115	129	1.08
Jenni Ramming, CSU	99	8- 94	102	1.03

## Horizon League Championship:

(at Dayton, Ohio - McLin Gymnasium)

### Quarterfinals - Friday, Nov. 17

(#1) Milwaukee 3, (#8) Youngstown State 0  
(30-26, 30-25, 30-19)

(#2) UIC 3, (#7) Butler 0  
(30-20, 30-22, 30-14)

(#3) Cleveland State 3, (#6) Loyola 0  
(30-28, 30-17, 30-21)

(#4) Green Bay 3, (#5) Wright State 0  
(30-25, 33-31, 30-19)

### Semifinals -- Saturday, Nov. 18

(#1) Milwaukee 3, (#4) Green Bay 1  
(30-24, 35-37, 30-23, 30-26)

(#2) UIC 3, (#3) Cleveland State 2  
(28-30, 30-25, 23-30, 30-26, 16-14)

### Championship -- Sunday, Nov. 19

(#1) Milwaukee 3, (#2) UIC 0  
(30-24, 30-23, 30-22)

## All-Tournament Team:

Name, School	Yr.	Pos.
Abby Bergsma, Green Bay	So.	MB
Melissa David, Milwaukee	Sr.	OH
Monica Ferguson, Milwaukee	Sr.	OH
Katie Kozak, UIC	Sr.	S
Sarah Moore, Milwaukee - *	Sr.	MB
Ambria Springer, UIC	Sr.	MH

\* - Tournament MVP

## NCAA Championship:

### First Round -- Friday, Dec. 1

(at Madison, Wis. - UW Field House)

Iowa State 3, Milwaukee 0  
(30-21, 30-10, 30-21)

## Offensive Players of the Week

August 28	Liz Fazio, Cleveland State
September 4	Leanne Felsing, Milwaukee
September 11	Ebony Barbosa, Youngstown State
September 18	Tara Geegan, Wright State
September 25	Melissa David, Milwaukee
October 2	Katarina Nedeljkovic, UIC
October 9	Cheryl Hegemann, Milwaukee
October 16	Betty Slinger, Green Bay
October 23	Leanne Felsing, Milwaukee
October 30	Cheryl Hegemann, Milwaukee
November 6	Beth Greulich, Cleveland State
November 13	Sarah Elmer, Loyola

## Defensive Players of the Week

August 28	Ambria Springer, UIC
September 4	Ann Deelo, Loyola
September 11	Danielle Siefker, Cleveland State
September 18	Jordan Bateman, Cleveland State
September 25	Sarah Poling, Wright State
October 2	Jordan Bateman, Cleveland State
October 9	Ann Deelo, Loyola
October 16	Becky Peters, Milwaukee
October 23	Michelle Degeeter, Butler
October 30	Ann Deelo, Loyola
November 6	Sarah Rauen, Green Bay
November 13	Megan Elfering, Green Bay

## 2006 Horizon League Award Winners

### All-League Team:

Name, School	Yr.	Pos.
Ruth Boscaljon, Youngstown State	Fr.	MH
Melissa David, Milwaukee	Sr.	OH
Sarah Elmer, Loyola	Sr.	S
Leanne Felsing, Milwaukee	Jr.	S/OH
Beth Greulich, Cleveland State	Fr.	OPP
Cheryl Hegemann, Milwaukee	Sr.	MB
Sarah Moore, Milwaukee	Sr.	MB
Katarina Nedeljkovic, UIC	Jr.	RS
Jenny Schultz, Wright State	Sr.	OH
Betty Slinger, Green Bay	Jr.	S
Mel Snyder, Cleveland State	Jr.	S
Ambria Springer, UIC	Sr.	MH

**Offensive Player of the Year:** Cheryl Hegemann, Milwaukee

**Defensive Player of the Year:** Ann Deelo, Loyola

**Newcomers of the Year:** Ruth Boscaljon, Youngstown State, and Beth Greulich, Cleveland State

**Coach of the Year:** Kathy Litzau, Milwaukee

# Horizon League Volleyball History

## Horizon League Tournament Champions

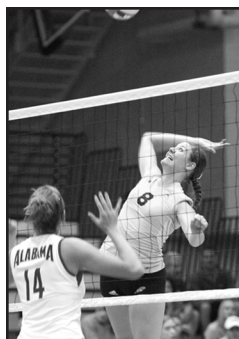
Year	Champion	Runner-Up	Site
1986	Butler	Xavier	Evansville, Ind.
1987	Butler	Loyola	Indianapolis, Ind.
1988	Saint Louis	Butler	Chicago, Ill.
1989	Saint Louis	Butler	St. Louis, Mo.
1990	Dayton	Butler	Cincinnati, Ohio
1991	Notre Dame	Loyola	Indianapolis, Ind.
1992	Notre Dame	Loyola	Pittsburgh, Pa.
1993	Notre Dame	Butler	Evansville, Ind.
1994	Notre Dame	Northern Illinois	DeKalb, Ill.
1995	Loyola	Northern Illinois	DeKalb, Ill.
1996	Northern Illinois	Butler	Indianapolis, Ind.
1997	Butler	Loyola	Chicago, Ill.
1998	Milwaukee	Loyola	Dayton, Ohio
1999	Loyola	Milwaukee	Chicago, Ill.
2000	Loyola	Butler	Cleveland, Ohio
2001	Milwaukee	Loyola	Milwaukee, Wis.
2002	Milwaukee	Loyola	Green Bay, Wis.
2003	Green Bay	Milwaukee	Indianapolis, Ind.
2004	Loyola	Cleveland State	Youngstown, Ohio
2005	Loyola	Wright State	Chicago, Ill.
2006	Milwaukee	UIC	Dayton, Ohio

## Championships by School:

Loyola 5, Notre Dame 4, Milwaukee 4, Butler 3, Saint Louis 2, Dayton 1, Northern Illinois 1, Green Bay 1

## NCAA Tournament Results (Horizon League representatives underlined)

1992	Penn State def. <u>Notre Dame</u> , 3-0	(15-13, 15-8, 15-9)
1995	Ball State def. <u>Loyola</u> , 3-0	(15-13, 15-11, 15-8)
1996	UC Santa Barbara d. <u>N. Illinois</u> , 3-2	(12-15, 16-14, 4-15, 15-9, 15-12)
1997	Michigan State def. <u>Butler</u> , 3-0	(15-5, 15-6, 15-9)
1998	Texas def. <u>Milwaukee</u> , 3-0	(15-6, 15-7, 15-13)
1999	Illinois def. <u>Milwaukee</u> , 3-1	(15-13, 10-15, 15-12, 15-6)
	Colorado State def. <u>Loyola</u> , 3-0	(15-5, 15-9, 15-8)
2000	Kansas State def. <u>Loyola</u> , 3-1	(15-7, 15-4, 6-15, 15-9)
	Michigan State def. <u>Milwaukee</u> , 3-1	(15-6, 15-4, 7-15, 19-17)
2001	Wisconsin def. <u>Milwaukee</u> , 3-0	(30-19, 30-15, 30-27)
2002	Northern Iowa def. <u>Milwaukee</u> , 3-1	(30-18, 30-15, 26-30, 30-27)
2003	Minnesota def. <u>Green Bay</u> , 3-0	(30-22, 30-12, 30-16)
2004	Wisconsin def. <u>Loyola</u> , 3-0	(30-27, 30-26, 30-25)
2005	Wisconsin def. <u>Loyola</u> , 3-0	(30-18, 30-26, 30-14)
2006	Iowa State def. <u>Milwaukee</u> , 3-0	(30-21, 30-10, 30-21)



*Milwaukee standout Cheryl Hegemann earned the 2006 Horizon League Player-of-the-Year award.*



*Loyola's Ann Deelo was the Defensive Player of the Year, eclipsing the League career digs record.*

# Horizon League Volleyball Through the Years

## 1986

Team	League			Overall		
	W	L	Pct	W	L	Pct
Butler	5	0	1.00	23	10	.697
Oral Roberts	4	1	.800	20	12	.625
Loyola	3	2	.600	13	21	.382
Xavier	2	3	.400	12	23	.343
Evansville	1	4	.200	5	28	.152
Saint Louis	0	5	.000	1	32	.030

### Tournament Results

#### Double Elimination

(#4) Xavier def. (#5) Evansville, 2-0  
 (#3) Loyola def. (#6) Saint Louis, 2-0  
 (#1) Butler def. Evansville, 2-1  
 (#2) Oral Roberts def. Loyola, 2-1  
 Loyola def. Evansville, 2-0  
 Xavier def. Saint Louis, 2-0  
 Butler def. Oral Roberts, 2-1  
 Xavier def. Loyola, 2-1  
 Xavier def. Oral Roberts, 2-0

#### Championship

Butler def. Xavier, 3-1  
 (15-11, 9-15, 15-10, 15-10)

## 1987

Team	League			Overall		
	W	L	Pct	W	L	Pct
Butler	3	1	.750	16	15	.516
Loyola	3	1	.750	24	15	.615
Saint Louis	3	1	.750	20	12	.625
Xavier	1	3	.250	5	23	.217
Evansville	0	4	.000	11	22	.333

### Tournament Results

#### First Round

Evansville def. Xavier, 3-2  
 Saint Louis def. Loyola, 3-0

#### Third Round

Butler def. Saint Louis, 3-0  
 Loyola def. Evansville, 3-0

#### Second Round

Butler def. Evansville, 3-0  
 Loyola def. Xavier, 3-1

#### Fourth Round

Loyola def. Saint Louis, 3-1

#### Championship

Butler def. Loyola, 3-1  
 (13-15, 15-7, 15-4, 17-15)

# Horizon League Volleyball Through the Years

## 1988

Team	League			Overall		
	W	L	Pct	W	L	Pct
Butler	5	0	1.000	29	7	.806
Saint Louis	4	1	.800	30	10	.750
Dayton	2	3	.400	23	16	.590
Xavier	2	3	.400	10	26	.278
Evansville	1	4	.200	21	17	.552
Loyola	1	4	.200	11	26	.297

### Tournament Results

*Pool Play*  
 Dayton def. Evansville, 3-2  
 Butler def. Loyola, 3-0  
 Saint Louis def. Evansville, 3-2  
 Loyola def. Xavier, 3-0  
 Saint Louis def. Dayton, 3-1  
 Butler def. Xavier, 3-1

*Second Round*  
 Evansville def. Xavier, 3-1  
 Loyola def. Dayton, 3-0

*Semifinals*  
 Butler def. Evansville, 3-0  
 Saint Louis def. Loyola, 3-0

*Championship*  
 Saint Louis def. Butler, 3-2  
 (3-15, 15-13, 15-8, 12-15, 16-14)

## 1991

Team	League			Overall		
	W	L	Pct	W	L	Pct
Notre Dame	5	0	1.000	19	7	.731
Xavier	3	2	.600	28	10	.737
Loyola	3	2	.600	26	12	.684
Butler	2	3	.400	16	17	.485
Dayton	2	3	.400	14	16	.467
Evansville	0	5	.000	9	21	.300

### Tournament Results

*First Round*  
 (#4) Butler def. (#5) Dayton, 3-1  
 (#3) Loyola def. (#6) Evansville, 3-0

*Semifinals*  
 Loyola def. (#2) Xavier, 3-1  
 (#1) Notre Dame def. Butler, 3-0

*Championship*  
 Notre Dame def. Loyola, 3-2  
 (15-10, 7-15, 15-1, 14-16, 15-10)

## 1989

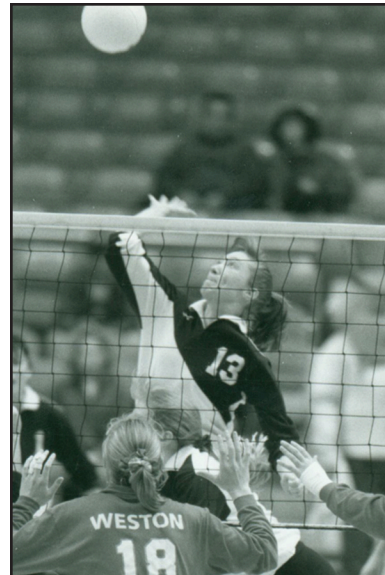
Team	League			Overall		
	W	L	Pct	W	L	Pct
Butler	6	0	1.000	20	15	.571
Saint Louis	5	1	.833	28	14	.667
Dayton	4	2	.667	17	17	.500
Evansville	2	4	.333	14	16	.467
Loyola	2	4	.333	20	22	.476
Marquette	1	5	.167	11	22	.333
Xavier	1	5	.167	10	24	.294

### Tournament Results

*First Round*  
 (#2) Saint Louis def. (#7) Xavier, 3-0  
 (#5) Loyola def. (#4) Evansville, 3-1  
 (#3) Dayton def. (#6) Marquette, 3-0

*Semifinals*  
 Saint Louis def. Dayton, 3-0  
 (#1) Butler def. Loyola, 3-2

*Championship*  
 Saint Louis def. Butler, 3-0  
 (15-8, 15-6, 15-2)



**Notre Dame standout Christy Peters won back-to-back League Player-of-the-Year honors in 1993 and 1994.**

## 1990

Team	League			Overall		
	W	L	Pct	W	L	Pct
Butler	7	0	1.000	23	12	.657
Saint Louis	5	2	.714	22	10	.688
Dayton	4	3	.571	17	22	.436
Loyola	4	3	.571	26	10	.722
Notre Dame	4	3	.571	9	27	.250
Xavier	3	4	.429	19	17	.528
Marquette	1	6	.143	11	21	.344
Evansville	0	7	.000	5	30	.143

### Tournament Results

*Quarterfinals*  
 (#2) Saint Louis def. (#7) Marquette, 3-0  
 (#3) Dayton def. (#6) Xavier, 3-0  
 (#1) Butler def. (#8) Evansville, 3-2  
 (#5) Notre Dame def. (#4) Loyola, 3-2

*Semifinals*  
 Dayton def. Saint Louis, 3-0  
 Butler def. Notre Dame, 3-0

*Championship*  
 Dayton def. Butler, 3-0  
 (15-8, 15-9, 15-9)

## 1992

Team	League			Overall		
	W	L	Pct	W	L	Pct
Notre Dame	7	0	1.000	30	8	.790
Loyola	6	1	.857	23	17	.575
Butler	4	3	.571	19	15	.559
Dayton	4	3	.571	26	9	.765
Xavier	3	4	.429	22	12	.647
Duquesne	2	5	.286	16	18	.471
La Salle	1	6	.143	6	24	.200
Evansville	1	6	.143	7	23	.234

### Tournament Results

*Quarterfinals*  
 (#1) Notre Dame def. (#8) Evansville, 3-0  
 (#4) Dayton def. (#5) Xavier, 3-1  
 (#3) Butler def. (#6) Duquesne, 3-0  
 (#2) Loyola def. (#7) La Salle, 3-0

*Semifinals*  
 Notre Dame def. Dayton, 3-0  
 Loyola def. Butler, 3-0

*Championship*  
 Notre Dame def. Loyola, 3-1  
 (15-9, 13-15, 15-10, 15-5)

# Horizon League Volleyball Through the Years

## 1993

Team	League			Overall		
	W	L	Pct	W	L	Pct
Notre Dame	5	0	1.000	25	5	.833
Butler	4	1	.800	25	11	.694
Loyola	3	2	.600	22	10	.688
Xavier	2	3	.400	26	15	.634
Evansville	1	4	.200	11	24	.314
La Salle	0	5	.000	8	24	.250

### Tournament Results

#### First Round

(#3) Loyola def. (#6) La Salle, 3-0  
 (#4) Xavier def. (#5) Evansville, 3-1

#### Semifinals

(#2) Butler def. Loyola, 3-1  
 (#1) Notre Dame def. Xavier, 3-0

#### Championship

Notre Dame def. Butler, 3-0  
 (15-12, 15-12, 15-13)

## 1996

Team	League			Overall		
	W	L	Pct	W	L	Pct
Northern Illinois	12	2	.857	27	8	.771
Loyola	10	4	.714	16	17	.485
Butler	10	4	.714	26	9	.743
Milwaukee	7	7	.500	16	15	.516
UIC	7	7	.500	14	19	.424
Wright State	6	8	.429	10	23	.303
Cleveland State	4	10	.286	15	19	.441
Green Bay	0	14	.000	3	26	.103

### Tournament Results

#### Quarterfinals

(#1) Northern Illinois def. (#8) Green Bay, 3-0

(#4) Milwaukee def. (#5) UIC, 3-0  
 (#2) Loyola def. (#7) Cleveland St., 3-0  
 (#3) Butler def. (#6) Wright State, 3-0

#### Semifinals

Butler def. Loyola, 3-1  
 Northern Illinois def. Milwaukee, 3-0

#### Championship

Northern Illinois def. Butler, 3-1  
 (4-15, 15-4, 15-10, 15-6)

## 1994

Team	League			Overall		
	W	L	Pct	W	L	Pct
Notre Dame	10	0	1.000	33	4	.892
Butler	8	2	.800	18	14	.563
Northern Illinois	8	2	.800	23	11	.676
Loyola	7	3	.700	26	9	.743
Xavier	6	4	.600	23	11	.676
Wright State	5	5	.500	16	13	.552
UIC	4	6	.400	9	25	.265
Green Bay	3	7	.300	14	18	.437
Cleveland State	2	8	.200	11	20	.356
Milwaukee	2	8	.200	9	26	.257
La Salle	0	10	.000	3	30	.091

### Tournament Results

#### Quarterfinals

(#1) Notre Dame def. (#8) Green Bay, 3-0

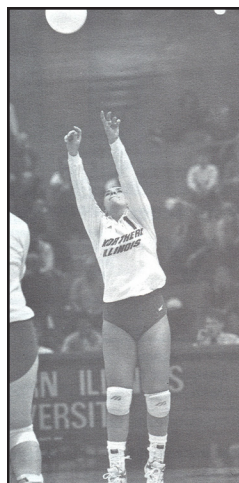
(#2) Butler def. (#7) UIC, 3-0  
 (#3) Northern Illinois def. (#6) Wright State, 3-0  
 (#4) Loyola def. (#5) Xavier, 3-2

#### Semifinals

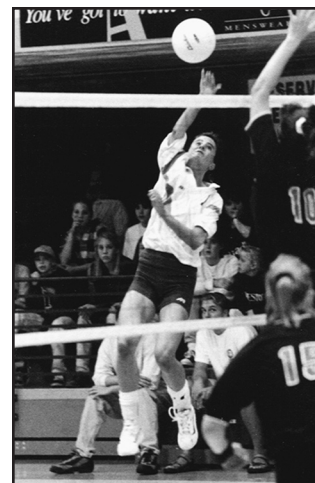
Northern Illinois def. Butler, 3-0  
 Notre Dame def. Loyola, 3-0

#### Championship

Notre Dame def. Northern Illinois, 3-1  
 (15-2, 7-15, 15-3, 15-11)



Northern Illinois' Shelby Snyder was named the Most Valuable Player of the 1994 League tournament.



Loyola's Missy Sartorelli was a three-time First-Team All-League performer (1993-95).

## 1995

Team	League			Overall		
	W	L	Pct	W	L	Pct
Northern Illinois	13	1	.929	16	13	.552
Butler	11	3	.786	19	11	.633
Loyola	10	4	.714	27	6	.818
Wright State	9	5	.643	23	10	.697
UIC	5	9	.357	14	17	.452
Milwaukee	4	10	.286	14	14	.500
Cleveland State	3	11	.214	6	26	.188
Green Bay	1	13	.071	7	20	.259

### Tournament Results

#### Semifinals

(#2) Loyola def. (#3) Butler, 3-0  
 (#1) Northern Illinois def. (#4) Wright State, 3-1

#### Championship

Loyola def. Northern Illinois, 3-1  
 (15-11, 15-2, 14-16, 15-8)

## 1997

Team	League			Overall		
	W	L	Pct	W	L	Pct
Butler	11	1	.917	28	7	.800
Milwaukee	11	1	.917	25	5	.833
Loyola	8	4	.667	18	14	.563
UIC	5	7	.417	11	21	.344
Cleveland State	3	9	.250	14	17	.452
Wright State	2	10	.167	10	21	.323
Green Bay	2	10	.167	4	26	.133

### Tournament Results

#### First Round

(#2) Milwaukee d. (#7) Green Bay, 3-0  
 (#4) UIC def. (#5) Cleveland State, 3-2  
 (#3) Loyola def. (#6) Wright State, 3-0

#### Semifinals

(#1) Butler def. UIC, 3-0  
 Loyola def. Milwaukee, 3-2

#### Championship

Butler def. Loyola, 3-0  
 (15-6, 15-13, 15-9)

# Horizon League Volleyball Through the Years

## 1998

Team	League			Overall		
	W	L	Pct	W	L	Pct
Milwaukee	11	1	.917	25	6	.806
Loyola	9	3	.750	20	14	.588
Butler	7	5	.583	13	15	.464
UIC	5	7	.417	15	16	.484
Cleveland State	5	7	.417	15	17	.469
Wright State	5	7	.417	11	18	.393
Green Bay	0	12	.000	3	30	.091

### Tournament Results

#### First Round

(#4) Wright State def. (#5) UIC, 3-0  
 (#6) Cleveland State d. (#3) Butler, 3-2  
 (#2) Loyola d. (#7) Green Bay, 3-0

#### Semifinals

(#1) Milwaukee def. Wright St., 3-2  
 Loyola def. Cleveland State, 3-2

#### Championship

Milwaukee def. Loyola, 3-2  
 (14-16, 15-0, 5-15, 15-7, 15-9)

## 2001

Team	League			Overall		
	W	L	Pct	W	L	Pct
Loyola	13	1	.929	20	6	.690
Milwaukee	12	2	.857	20	8	.714
Wright State	11	3	.786	21	7	.750
UIC	6	8	.429	15	15	.500
Butler	6	8	.429	12	13	.480
Green Bay	5	9	.357	13	15	.464
Cleveland State	2	12	.143	7	19	.269
Youngstown State	1	13	.061	10	18	.357

### Tournament Results

#### Quarterfinals

(#6) Green Bay def. (#3) Wright St., 3-0  
 (#2) Milwaukee def. (#7) Cleveland State, 3-0

#### Semifinals

Milwaukee d. Green Bay, 3-0  
 Loyola def. Butler, 3-2

#### Championship

(#5) Butler def. (#4) UIC, 3-0  
 (#1) Loyola d. (#8) Youngstown St., 3-0  
 Milwaukee def. Loyola, 3-0  
 (30-27, 30-15, 31-29)

## 1999

Team	League			Overall		
	W	L	Pct	W	L	Pct
Milwaukee	11	1	.917	25	3	.893
Loyola	10	2	.833	24	8	.667
UIC	7	5	.583	17	15	.521
Wright State	6	6	.500	11	19	.367
Butler	5	7	.300	15	15	.300
Cleveland State	3	9	.250	8	22	.267
Green Bay	0	12	.000	4	27	.129

### Tournament Results

#### First Round

(#5) Butler def. (#4) Wright State, 3-0  
 (#3) UIC def. (#6) Cleveland State, 3-0  
 (#2) Loyola d. (#7) Green Bay, 3-0

#### Semifinals

(#1) Milwaukee def. Butler, 3-1  
 Loyola def. UIC, 3-2

#### Championship

Loyola def. Milwaukee, 3-2  
 (15-11, 15-10, 11-15, 4-15, 15-11)

## 2002

Team	League			Overall		
	W	L	Pct	W	L	Pct
Loyola	13	1	.929	27	5	.844
Milwaukee	11	3	.786	20	14	.588
Butler	7	7	.500	15	20	.429
Green Bay	7	7	.500	17	18	.486
UIC	7	7	.500	20	14	.588
Wright State	6	8	.429	18	13	.581
Cleveland State	5	9	.357	18	13	.581
Youngstown State	0	14	.000	8	24	.250

### Tournament Results

#### Quarterfinals

(#6) Wright State def. (#3) Butler, 3-0  
 (#2) Milwaukee def. (#7) Cleveland State, 3-0

#### Semifinals

Milwaukee def. Wright State, 3-2  
 Loyola def. Green Bay, 3-0

#### Championship

(#1) Loyola d. (#8) Youngstown St., 3-0  
 (#4) Green Bay def. (#5) UIC, 3-0  
 Milwaukee def. Loyola, 3-2  
 (30-25, 30-27, 18-30, 24-30, 15-13)

## 2000

Team	League			Overall		
	W	L	Pct	W	L	Pct
Loyola	11	1	.917	22	8	.733
Milwaukee	11	1	.917	23	4	.852
Butler	7	5	.583	18	12	.600
UIC	6	6	.500	18	13	.581
Wright State	4	8	.333	11	17	.393
Green Bay	2	10	.167	7	21	.250
Cleveland State	1	11	.083	12	17	.414

### Tournament Results

#### First Round

(#5) Wright State def. (#4) UIC, 3-0  
 (#3) Butler def. (#6) Green Bay, 3-0  
 (#2) Milwaukee def. (#7) Cleveland State, 3-0

#### Semifinals

Butler def. Milwaukee, 3-2  
 (#1) Loyola def. Wright State, 3-1

#### Championship

Loyola def. Butler, 3-0  
 (15-7, 15-3, 15-5)

## 2003

Team	League			Overall		
	W	L	Pct	W	L	Pct
Milwaukee	13	1	.929	25	5	.833
Loyola	11	3	.786	18	14	.563
Green Bay	10	4	.714	23	11	.676
Butler	9	5	.643	20	12	.625
Wright State	6	8	.429	16	15	.516
Cleveland State	4	10	.286	18	16	.529
UIC	2	12	.143	11	21	.344
Youngstown State	1	13	.071	10	19	.345

### Tournament Results

#### First Round

(#6) Cleveland State def. (#7) UIC, 3-0  
 (#5) Wright State def. (#8) Youngstown State, 3-0

#### Semifinals

Green Bay def. (#2) Loyola, 3-2  
 (#1) Milwaukee def. Butler, 3-1

#### Second Round

(#4) Butler def. Wright State, 3-0  
 (#3) Green Bay def. Cleveland St., 3-0

#### Championship

Green Bay def. Milwaukee, 3-2  
 (30-15, 18-30, 30-24, 22-30, 16-14)

# Horizon League Volleyball Through the Years

## 2004

Team	League			Overall		
	W	L	Pct	W	L	Pct
Milwaukee	13	1	.929	19	8	.704
Butler	12	2	.857	18	10	.643
Loyola	10	4	.714	22	9	.710
Cleveland State	6	8	.429	15	13	.536
UIC	6	8	.429	10	21	.323
Green Bay	6	8	.429	10	19	.345
Wright State	2	12	.143	4	26	.133
Youngstown State	1	13	.071	10	21	.323

### Tournament Results

#### First Round

(#6) UWGB d. (#7) Wright St., 3-2  
 (#8) Youngstown State d. (#5) UIC, 3-0

#### Second Round

(#3) Loyola def. Green Bay, 3-0  
 (#4) Cleveland St. d. Youngstown St., 3-0

#### Semifinals

Loyola def. (#2) Butler, 3-2  
 Cleveland St. def. (#1) Milwaukee, 3-2

#### Championship

Loyola def. Cleveland State, 3-2  
 (25-30, 25-30, 41-39, 30-20, 15-12)

## 2005

Team	League			Overall		
	W	L	Pct	W	L	Pct
Milwaukee	12	2	.857	20	9	.690
Cleveland State	11	3	.786	19	10	.655
UIC	8	6	.571	12	19	.387
Loyola	8	6	.571	13	18	.419
Green Bay	6	8	.429	15	15	.500
Butler	6	8	.429	11	16	.407
Wright State	5	9	.357	12	20	.375
Youngstown State	0	14	.000	7	22	.241

### Tournament Results

#### Quarterfinals

(#5) Green Bay def. (#8) Youngstown State, 3-0  
 (#7) Wright State def. (#6) Butler, 3-0

#### Semifinals

Loyola def. (#1) Milwaukee, 3-1  
 Wright State def. (#2) Cleveland State, 3-0

#### Second Round

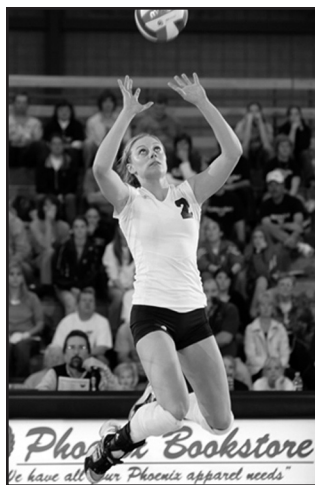
(#4) Loyola def. Green Bay, 3-2  
 Wright State def. (#3) UIC, 3-2

#### Championship

Loyola def. Wright State, 3-2  
 (28-30, 30-23, 30-21, 15-30, 15-12)



Lauren Holbrook helped Loyola to the Horizon League Championship in 2004.



Green Bay's Betty Slinger received First-Team All-League notice in both 2005 and 2006.

## 2006

Team	League			Overall		
	W	L	Pct	W	L	Pct
Milwaukee	13	1	.929	24	6	.800
UIC	8	6	.571	17	17	.500
Cleveland State	8	6	.571	19	9	.679
Green Bay	8	6	.571	15	15	.500
Wright State	8	6	.571	14	17	.452
Loyola	7	7	.500	14	16	.467
Butler	3	11	.214	8	22	.267
Youngstown State	1	13	.071	10	22	.312

### Tournament Results

#### Quarterfinals

(#1) Milwaukee def. (#8) Youngstown State, 3-0  
 (#2) UIC def. (#7) Butler, 3-0  
 (#3) Cleveland State def. (#6) Loyola, 3-0  
 (#4) Green Bay def. (#5) Wright State, 3-0

#### Semifinals

UIC def. Cleveland State, 3-2  
 Milwaukee def. Green Bay, 3-1

#### Championship

Milwaukee def. UIC, 3-0  
 (30-24, 30-23, 30-22)

## Hegemann Nets Academic All-America Honors

Indianapolis, Ind. -- University of Wisconsin-Milwaukee senior Cheryl Hegemann received Third-Team Academic All-America recognition from the College Sports Information Directors of America (CoSIDA), putting her among 20 players to be recognized by the organization. The awards are sponsored by *ESPN the Magazine*.

Hegemann was named the League's Player of the Year after propelling the Panthers to a regular-season League title before helping Milwaukee claim the Horizon League Championship and an automatic berth into the NCAA tournament. She led Milwaukee in kills and blocks during the regular season and was also named the League's Offensive Player of the Week twice. Hegemann is ranked in the top-10 in five Horizon League statistical categories for the season and became Milwaukee's all-time blocks leader.

Hegemann finished second in the League in points per game with an average of 4.58 and ranked third in the circuit in kills with 3.61 per game. The senior also averaged 1.10 blocks per game (seventh in the League) to complete her outstanding play at the net, while her rate of 0.36 services aces per game was fifth-best on that chart. Hegemann's performance paced the Panthers to a 24-6 overall ledger which included a school-record 15-match winning streak prior to a first-round loss to Iowa State University in the NCAA Championship.

In the classroom, Hegemann posted a 3.76 grade-point average while pursuing a degree in education. She also won Horizon League Academic All-League team honors and Academic All-District honors last year while landing a spot on UWM Dean's List.

University of Nebraska outside hitter Sarah Pavan received Academic All-America of the Year honors after leading the Cornhuskers to the national championship. The University of Toledo's Kate Bean, New Mexico State University's Jackie Choi, Texas A&M University's Christi Hahn, the University of Virginia's Sarah Kirkwood and East Carolina University's Heidi Krug rounded out the student-athletes who were included on the first team.

# Horizon League Volleyball Honors

1  
9  
8  
6

## First-Team All-League

Christie Essington, Butler  
Jodi Fahey, Xavier  
Tina Gray, Oral Roberts  
Mary Just, Loyola  
Revis Ward, Oral Roberts  
Susan Weed, Butler

## Honorable Mention All-League

Lori Adams, Butler  
Debbie Bajovich, Evansville  
Margaret Cullen, Loyola  
Mary Horan, Xavier  
Jill Taylor, Butler

1  
9  
8  
7

## First-Team All-League

Jennifer Anzelone, Loyola  
Janet Darpel, Saint Louis  
Mary Just, Loyola  
Kathy Kalb, Xavier  
Jill Spurgeon, Butler  
Jill Taylor, Butler

## Second-Team All-League

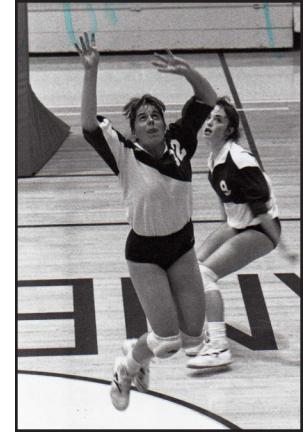
Jennifer Anzelone, Loyola  
Patty Bruns, Xavier  
Sheila Johnson, Oral Roberts  
Kathy Kalb, Xavier  
Zita Kuliesis, Loyola  
Dawn Shepard, Saint Louis

## Second-Team All-League

Sherry Chatel, Xavier  
Beth Christiansen, Butler  
Mary Horan, Xavier  
Kim Mooreleghan, Saint Louis  
Lori Schulz, Evansville  
Lisa Wesselak, Butler



Butler's Jill Taylor won Player-of-the-Year honors in 1987.



Loyola's Julia McShane was the Player of the Year in 1991.

1  
9  
8  
8

Carrie Cordonnier, Dayton  
Kathy Kalb, Xavier  
Stacia Mellinger, Xavier  
Karan Rengers, Saint Louis  
Jill Spurgeon, Butler  
Jill Taylor, Butler

Lori Adams, Butler  
Jennifer Anzelone, Loyola  
Kerri Childress, Loyola  
Janet Darpel, Saint Louis  
Mandy Goldman, Evansville  
Jackie Hoyng, Dayton

1  
9  
8  
9

Lori Adams, Butler  
Carrie Cordonnier, Dayton  
Kerri Childress, Loyola  
Janet Darpel, Saint Louis  
Stacia Mellinger, Butler  
Karan Rengers, Saint Louis

Beth Christiansen, Butler  
Diane Davis, Evansville  
Mandy Goldman, Evansville  
Therese O'Neill, Loyola  
Cheryl Romanowski, Loyola  
Renee Russ, Loyola

1  
9  
9  
0

Beth Christiansen, Butler  
Janet Darpel, Saint Louis  
Julie McShane, Loyola  
Stacia Mellinger, Butler  
Therese O'Neill, Loyola  
Alicia Turner, Notre Dame  
Cathy Wojciechowski, Dayton

Sue Fishburn, Dayton  
Sherri Goll, Marquette  
Irene Haugh, Saint Louis  
Sandy Kittle, Saint Louis  
Kim Mooreleghan, Saint Louis  
Jessica Taylor, Butler

1  
9  
9  
1

## First-Team All-League

Kerri Childress, Loyola  
Jessica Fiebelkorn, Notre Dame  
Janelle Karlan, Notre Dame  
Julie McShane, Loyola  
Jessica Taylor, Butler  
Cathy Wojciechowski, Dayton

## Second-Team All-League

Marilyn Cragin, Notre Dame  
Jamie Kirch, Dayton  
Jennifer Nunn, Xavier  
Therese O'Neill, Loyola  
Christy Peters, Notre Dame  
Lisa Sampson, Evansville

## All-Newcomer Team

Missy Hathorn, Xavier  
Sharon Krumpolz, Butler  
Jill Perry, Xavier  
Christy Peters, Notre Dame  
Vicki Spahn, Evansville  
Stephanie Wesley, Butler

## All-Tournament Team

Kerri Childress, Loyola (MVP)  
Jessica Fiebelkorn, Notre Dame  
Janelle Karlan, Notre Dame  
Julie McShane, Loyola  
Christy Peters, Notre Dame  
Jessica Taylor, Butler

1  
9  
9  
2

Jessica Fiebelkorn, Notre Dame  
Jenny Geraci, Dayton  
Janelle Karlan, Notre Dame  
Julie McShane, Loyola  
Christy Peters, Notre Dame  
Jessica Taylor, Butler

Jenny Arentz, Butler  
Marilyn Cragin, Notre Dame  
Jamie Kirch, Dayton  
Lori Miller, Loyola  
Lisa Sampson, Evansville  
Cathy Wojciechowski, Dayton  
Gwen Zang, Xavier

Laura Baire, Butler  
Maureen Blanchfield, Loyola  
Colleen Bowen, Duquesne  
Amy Habel, Dayton  
Brett Hensel, Notre Dame  
Missy Sartorelli, Loyola  
Nikki Valentine, Loyola

Jessica Fiebelkorn, Notre Dame (MVP)  
Jenny Geraci, Dayton  
Julie McShane, Loyola  
Therese O'Neill, Loyola  
Christy Peters, Notre Dame  
Jessica Taylor, Butler

1  
9  
9  
3

Jenny Arentz, Butler  
Laura Baire, Butler  
Janelle Karlan, Notre Dame  
Christy Peters, Notre Dame  
Missy Sartorelli, Loyola  
Molly Stark, Notre Dame

Julie Harris, Notre Dame  
Kim King, Xavier  
Lisa Sampson, Evansville  
Mary Sarna, Loyola  
Nikki Valentine, Loyola  
Gwen Zang, Xavier

Melissa Beckwith, Loyola  
Jenny Birkner, Notre Dame  
Kelly Conners, Loyola  
Kristina Ervin, Notre Dame  
Misty Lamp, Evansville  
Sally Schulte, Xavier

Laura Baire, Butler  
Nicole Coates, Notre Dame  
Christy Peters, Notre Dame (MVP)  
Mary Sarna, Loyola  
Stephanie Wesley, Butler  
Gwen Zang, Xavier

# Horizon League Volleyball Honors

1  
9  
9  
4

## First-Team All-League

Danielle Gerenz, Northern Illinois  
Christy Peters, Notre Dame  
Missy Sartorelli, Loyola  
Shelby Snyder, Northern Illinois  
Shannon Tuttle, Notre Dame  
Stephanie Wesley, Butler

## Second-Team All-League

Laura Baire, Butler  
Jenny Birkner, Notre Dame  
Angie Harris, Notre Dame  
Jen Moore, Wright State  
Sally Schulte, Xavier  
Nikki Valentine, Loyola

## All-Newcomer Team

Arian Adams, Loyola  
Chelsea Bishop, Butler  
Angie Harris, Notre Dame  
Jennifer Kintzel, Butler  
Jaimie Lee, Notre Dame  
Becky Stewart, Northern Illinois

## All-Tournament Team

Laura Baire, Butler  
Jenny Birkner, Notre Dame  
Nicole Coates, Notre Dame  
Angie Harris, Notre Dame  
Shelby Snyder, Northern Illinois (MVP)  
Becky Stewart, Northern Illinois

1  
9  
9  
5

Arian Adams, Loyola  
Laura Baire, Butler  
Holly Bauer, Northern Illinois  
Jennifer Bringman, Wright State  
Susie Bruce, Loyola  
Missy Sartorelli, Loyola

Kristin Jahnke, Milwaukee  
Marie Kaland, Green Bay  
Jennifer Kintzel, Butler  
Trudy VandeBerg, Milwaukee  
Katie Walsh, UIC  
Tenille Whiteside, Cleveland State

Becky Hornik, Milwaukee  
Carrie Monnes, Wright State  
Jennifer O'Neill, Green Bay  
Amy Pickett, Butler  
Tamara Stutheit, Northern Illinois  
Katie Walsh, UIC

Arian Adams, Loyola  
Beth Burkholder, Northern Illinois (MVP)  
Chris Jagodzinski, Loyola  
Becky Stewart, Northern Illinois  
Cheri Stuart, Northern Illinois  
Tamara Stutheit, Northern Illinois

1  
9  
9  
6

Beth Burkholder, Northern Illinois  
Joanna Downie, Wright State  
Jennifer Kintzel, Butler  
Amy Pickett, Butler  
Becky Stewart, Northern Illinois  
Katie Walsh, UIC

Arian Adams, Loyola  
Stephanie Goehl, Loyola  
Amber Howard, Northern Illinois  
Ericka Malterer, Milwaukee  
Trudy VandeBerg, Milwaukee  
Tenille Whiteside, Cleveland State

Ashley Clark, UIC  
Stephanie Goehl, Loyola  
Vanessa Grazzini, UIC  
Ericka Malterer, Milwaukee  
Christy Mikesell, Northern Illinois  
Katie Schneider, Milwaukee

Beth Burkholder, Northern Illinois  
Amber Howard, Northern Illinois  
Jennifer Kintzel, Butler  
Tara Pasch, Loyola  
Amy Pickett, Butler  
Becky Stewart, Northern Illinois (MVP)

1  
9  
9  
7

Arian Adams, Loyola  
Jennifer Kintzel, Butler  
Keelyn Krill, Milwaukee  
Patty Murphy, Loyola  
Amy Pickett, Butler  
Trudy VandeBerg, Milwaukee

Heather Cox, Butler  
Stephanie Goehl, Loyola  
Chris Jagodzinski, Loyola  
Ericka Malterer, Milwaukee  
Katie Schneider, Milwaukee  
Jessica Toth, Cleveland State

Keelyn Krill, Milwaukee  
Lynze Lysen, Butler  
Kelly Price, Loyola  
Amy Strohmeier, Green Bay  
Jessica Toth, Cleveland State  
Jackie Utz, UIC

Arian Adams, Loyola  
Heather Cox, Butler  
Stephanie Goehl, Loyola  
Jennifer Kintzel, Butler (MVP)  
Keelyn Krill, Milwaukee  
Amy Pickett, Butler

1  
9  
9  
8

Kathy Berg, Loyola  
Ericka Malterer, Milwaukee  
Carrie Monnes, Wright State  
Patty Murphy, Loyola  
Amy Pickett, Butler  
Sue Raschka, Milwaukee

Alisha Bable, Cleveland State  
Laura Dallenbach, Milwaukee  
Joanna Downie, Wright State  
Vanessa Grazzini, UIC  
Sarah Poglits, Loyola  
Katie Schneider, Milwaukee

Laura Dallenbach, Milwaukee  
Jenelle Hart, Loyola  
Sarah Poglits, Loyola  
Chrissy Schurla, Milwaukee  
Angela Sobocinski, Green Bay  
Heather Thomas, Loyola

Alisha Bable, Cleveland State  
Joanna Downie, Wright State  
Laura Dallenbach, Milwaukee  
Ericka Malterer, Milwaukee (MVP)  
Patty Murphy, Loyola  
Sarah Poglits, Loyola

1  
9  
9  
9

Ericka Malterer, Milwaukee  
Sue Raschka, Milwaukee  
Katie Schneider, Milwaukee  
Chrissy Schurla, Milwaukee  
Michelle Sours, Wright State  
Julie Wiejak, Loyola

Kelly Colangelo, UIC  
Lynze Lysen, Butler  
Renee Nash, Loyola  
Kelly Price, Loyola  
Sarah Poglits, Loyola  
Jackie Utz, UIC

Gina Caneva, UIC  
Karis Day, Wright State  
Mandy Gels, Wright State  
Brenda Krauss, Green Bay  
Kristen Krubsack, Milwaukee  
Keely Norris, Butler

Andrea King, Butler  
Ericka Malterer, Milwaukee  
Renee Nash, Loyola  
Sarah Poglits, Loyola  
Jackie Utz, UIC  
Julie Wiejak, Loyola (MVP)

2  
0  
0  
0

Laura Dallenbach, Milwaukee  
Renee Nash, Loyola  
Sarah Poglits, Loyola  
Kelly Price, Loyola  
Chrissy Schurla, Milwaukee  
Michelle Smith, Cleveland State

Kylie Galbraith, Butler  
Jenelle Hart, Loyola  
Andrea King, Butler  
Keely Norris, Butler  
Darlene Prunty, Wright State  
Lindsey Spoden, Milwaukee

Tari Boutin, Milwaukee  
Lindsay Filkins, UIC  
Crystal Nuzech, Green Bay  
Sarah Potts, Milwaukee  
Teaha Shepperd, UIC  
Lindsey Spoden, Milwaukee  
Janelle Tomlinson, Green Bay

Kylie Galbraith, Butler  
Andrea King, Butler  
Lynze Lysen, Butler  
Renee Nash, Loyola (MVP)  
Sarah Poglits, Loyola  
Kelly Price, Loyola

2  
0  
0  
1

Laura Dallenbach, Milwaukee  
Karis Day, Loyola  
Lauren Mikos, Loyola  
Liza Osterhage, Wright State  
Chrissy Schurla, Milwaukee  
Janelle Tomlinson, Green Bay

Mandy Gels, Wright State  
Jenelle Hart, Loyola  
Lauren Holbrook, Loyola  
Keely Norris, Butler  
Teaha Shepperd, UIC  
Lindsey Spoden, Milwaukee

Jamie Bouyer, Cleveland State  
Kali Carter, Butler  
Kelly Crain, Cleveland State  
Lauren Holbrook, Loyola  
Leslie Kuhn, Green Bay  
Dawn Strahanoski, UIC

Tari Boutin, Milwaukee  
Laura Dallenbach, Milwaukee (MVP)  
Jenelle Hart, Loyola  
Andrea King, Butler  
Lauren Mikos, Loyola  
Angela Sobocinski, Green Bay



# Horizon League Volleyball Honors

## All-League

Tara Boutin, Milwaukee  
 Jamie Bouyer, Cleveland State  
 Kristen Daly, Loyola  
 Shari Davis, Loyola  
 Mandy Gels, Wright State  
 Lauren Holbrook, Loyola  
 Keely Norris, Butler  
 Sarah Potts, Milwaukee  
 Teaha Shepperd, UIC  
 Lindsey Spoden, Milwaukee  
 Jessie Theys, Green Bay  
 Janelle Tomlinson, Green Bay



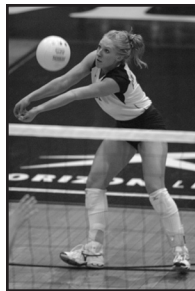
**Teaha Shepperd, UIC**

Areal Bienemy, Butler  
 Jamie Bouyer, Cleveland State  
 Kali Carter, Butler  
 Karen Fruit, Milwaukee  
 Lauren Holbrook, Loyola  
 Leslie Kuhn, Green Bay  
 Jorie Miguel, Loyola  
 Tricia Naseman, Wright State  
 Teaha Shepperd, UIC  
 Lindsey Spoden, Milwaukee  
 Jessie Theys, Green Bay  
 Janelle Tomlinson, Green Bay



**Lindsey Spoden, Milwaukee**

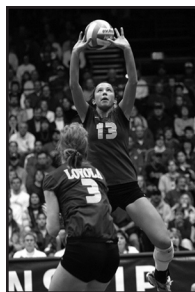
Nichol Amberg, Loyola  
 Areal Bienemy, Butler  
 Jamie Bouyer, Cleveland State  
 Kali Carter, Butler  
 Karen Fruit, Milwaukee  
 Lauren Holbrook, Loyola  
 Nickole Kennedy, Cleveland State  
 Katie Kozak, UIC  
 Leslie Kuhn, Green Bay  
 Melissa Lange, Milwaukee  
 Jill Smits, Green Bay  
 Hilary Stromath, Loyola



**Megan Knightly, Butler**

Courtney Ashley, Loyola  
 Emily Clark, Cleveland State  
 Cheryl Hegemann, Milwaukee  
 Nickole Kennedy, Cleveland State  
 Megan Knightly, Butler  
 Melissa Lange, Milwaukee  
 Katarina Nedeljkovic, UIC  
 Sarah Poling, Wright State  
 Jackie Rosen, Green Bay  
 Danielle Siefker, Cleveland State  
 Betty Slinger, Green Bay  
 Ambria Springer, UIC

Ruth Boscaljon, Youngstown State  
 Melissa David, Milwaukee  
 Sarah Elmer, Loyola  
 Leanne Felsing, Milwaukee  
 Beth Greulich, Cleveland State  
 Cheryl Hegemann, Milwaukee  
 Sarah Moore, Milwaukee  
 Katarina Nedeljkovic, UIC  
 Jenny Schultz, Wright State  
 Betty Slinger, Green Bay  
 Mel Snyder, Cleveland State  
 Ambria Springer, UIC



**Sarah Elmer, Loyola**

## All-Newcomer Team

Alisa Hatcher, Cleveland State  
 Meghan Keck, UIC  
 Nickole Kennedy, Cleveland State  
 Megan Knightly, Butler  
 Rachel Kuebbing, Milwaukee  
 Angie Pasquinnelli, Youngstown State  
 Amanda Timmers, Green Bay

Courtney Ashley, Loyola  
 Alyssa Cress, Butler  
 Melissa David, Milwaukee  
 Cheryl Hegemann, Milwaukee  
 Krystal Hendrix, Butler  
 Danielle Siefker, Cleveland State

Michelle DeGeeter, Butler  
 Leanne Felsing, Milwaukee  
 Jessica Fraley, Youngstown State  
 Jamie Gabrielson, Milwaukee  
 Katarina Nedeljkovic, UIC  
 Keely Zins, Loyola

Alicia Coltrane, Butler  
 Dana Daprile, Butler  
 Audrey Davis, Loyola  
 Lizzy Gunn, Wright State  
 Becky Peters, Milwaukee  
 Jenni Ramminger, Cleveland State

Porshia Allen, Butler  
 Ruth Boscaljon, Youngstown State  
 Liz Fazio, Cleveland State  
 Beth Greulich, Cleveland State  
 Amanda Kenny, UIC  
 Dana VanDiggelen, Loyola

## All-Tournament Team

Tari Boutin, Milwaukee  
 Jamie Bouyer, Cleveland State  
 Kristen Daly, Loyola  
 Shari Davis, Loyola  
 Mandy Gels, Wright State  
 Lauren Holbrook, Loyola  
 Keely Norris, Butler  
 Sarah Potts, Milwaukee  
 Teaha Shepperd, UIC  
 Lindsey Spoden, Milwaukee (MVP)  
 Jessie Theys, Green Bay  
 Janelle Tomlinson, Green Bay

Areal Bienemy, Butler  
 Karen Fruit, Milwaukee  
 Lindsey Spoden, Milwaukee  
 Jessie Theys, Green Bay  
 Amanda Tiamers, Green Bay  
 Janelle Tomlinson, Green Bay (MVP)

Nichol Amberg, Loyola (MVP)  
 Jamie Bouyer, Cleveland State  
 Kelly Crain, Cleveland State  
 Lauren Holbrook, Loyola  
 Danielle Siefker, Cleveland State  
 Hilary Stromath, Loyola

Audrey Davis, Loyola  
 Sarah Elmer, Loyola (MVP)  
 Lindsey Frank, Wright State  
 Lizzy Gunn, Wright State  
 Sarah Poling, Wright State  
 Hilary Stromath, Loyola

Abby Bergsma, Green Bay  
 Melissa David, Milwaukee  
 Monica Ferguson, Milwaukee  
 Katie Kozak, UIC  
 Sarah Moore, Milwaukee (MVP)  
 Ambria Springer, UIC

## THREE-TIME FIRST-TEAM SELECTIONS

**Janet Darpel**, Saint Louis (1987-89-90); **Stacia Mellinger**, Butler (1988-89-90); **Julie McShane**, Loyola (1990-91-92); **Janelle Karlan**, Notre Dame (1991-92-93); **Christy Peters**, Notre Dame (1992-93-94); **Missy Sartorelli**, Loyola (1993-94-95); **Amy Pickett**, Butler (1996-97-98); **Chrissy Schurla**, Milwaukee (1999-00-01); **Janelle Tomlinson**, Green Bay (2001-02-03); **Lauren Holbrook**, UIC (2002-03-04); **Teaha Shepperd**, UIC (2002-03-04)

# Horizon League Volleyball Players of the Week

**1987**  
 Oct. 27 Irene Haugh, Saint Louis  
 Nov. 17 Mary Just, Loyola

**1988**  
 Sept. 13 Jill Taylor, Butler  
 Sept. 27 Karan Rengers, Saint Louis  
 Oct. 4 Carrie Cordonnier, Dayton  
 Nov. 14 Mandy Goldman, Evansville  
 Nov. 21 Jill Taylor, Butler

**1989**  
 Nov. 20 Janet Darpel, Saint Louis

**1991**  
 Sept. 9 Julie McShane, Loyola  
 Sept. 23 Jessica Taylor, Butler  
 Oct. 21 Marilyn Craigin, Notre Dame  
 Nov. 4 Jessica Fiebelkorn, Notre Dame  
 Nov. 18 Jessica Fiebelkorn, Notre Dame

**1992**  
 Sept. 8 Christy Peters, Notre Dame  
 Sept. 14 Cathy Wojciechowski, Dayton  
 Sept. 21 Christy Peters, Notre Dame  
 Sept. 28 Cathy Wojciechowski, Dayton  
 Oct. 5 Cathy Wojciechowski, Dayton  
 Oct. 12 Jessica Taylor, Butler  
 Oct. 19 Jessica Fiebelkorn, Notre Dame  
 Oct. 26 Laura Baire, Butler  
 Nov. 2 Jenny Geraci, Dayton  
 Nov. 9 Missy Sartorelli, Loyola  
 Nov. 16 Kim King, Xavier  
 Nov. 23 Jessica Fiebelkorn, Notre Dame

**1993**  
 Sept. 7 Missy Sartorelli, Loyola  
 Sept. 13 Pam Johnson, Evansville  
 Sept. 20 Christy Peters, Notre Dame  
 Sept. 27 Christy Peters, Notre Dame  
 Oct. 4 Molly Stark, Notre Dame  
 Oct. 11 Stephanie Wesley, Butler  
 Oct. 18 Gwen Zang, Xavier  
 Oct. 24 Laura Baire, Butler  
 Oct. 31 Molly Stark, Notre Dame  
 Nov. 8 Lisa Sampson, Evansville  
 Nov. 15 Wendy Maat, Butler

**1994**  
 Sept. 6 Christy Peters, Notre Dame  
 Sept. 12 Missy Sartorelli, Loyola  
 Sept. 19 Christy Peters, Notre Dame  
 Sept. 26 Heather Cox, Butler  
 Oct. 3 Missy Hathorn, Xavier  
 Oct. 10 Danielle Gerenz, Northern Illinois  
 Oct. 17 Shelby Snyder, Northern Illinois  
 Oct. 24 Susan Morris, UIC  
 Oct. 31 Susie Checkett, Xavier  
 Nov. 7 Chelsea Bishop, Butler  
 Nov. 14 Angie Harris, Notre Dame

**1995**  
 Sept. 5 Jennifer Bringman, Wright State  
 Sept. 11 Missy Sartorelli, Loyola  
 Sept. 18 Marie Kaland, Green Bay  
 Sept. 25 Tenille Whiteside, Cleveland State  
 Oct. 2 Katie Walsh, UIC  
 Oct. 9 Laura Baire, Butler  
 Oct. 16 Arian Adams, Loyola  
 Oct. 23 Holly Bauer, Northern Illinois  
 Oct. 30 Tamara Stutheit, Northern Illinois  
 Nov. 6 Jennifer Bringman, Wright State  
 Nov. 13 Katie Walsh, UIC

**1996**  
 Sept. 2 Arian Adams, Loyola  
 Sept. 9 Amy Pickett, Butler  
 Sept. 16 Katie Walsh, UIC  
 Sept. 23 Tenille Whiteside, Cleveland State  
 Sept. 30 Amy Pickett, Butler  
 Oct. 7 Beth Burkholder, Northern Illinois  
 Oct. 14 Ericka Malterer, Milwaukee  
 Oct. 21 Katie Walsh, UIC  
 Oct. 28 Chris Jagodzinski, Loyola  
 Nov. 4 Stephanie McShurley, Butler  
 Nov. 11 Stephanie Goehl, Loyola  
 Nov. 18 Katie Schneider, Milwaukee

**1997**  
 Sept. 2 Heather Cox, Butler  
 Sept. 8 Patty Murphy, Loyola  
 Sept. 15 Jennifer Kintzel, Butler  
 Sept. 22 Kristin Fitzgerald, Milwaukee  
 Sept. 29 Jackie Utz, UIC  
 Oct. 6 Amy Pickett, Butler  
 Oct. 13 Deirdre Laney, Cleveland State  
 Oct. 20 Arian Adams, Loyola  
 Oct. 27 Katie Schneider, Milwaukee  
 Nov. 3 Amy Pickett, Butler  
 Nov. 10 Trudy VandeBerg, Milwaukee  
 Nov. 17 Kelly Price, Loyola

**1998**  
 Sept. 8 Jackie Utz, UIC  
 Sept. 14 Alisa Bale, Cleveland State  
 Sept. 21 Kathy Berg, UIC  
 Sept. 28 Sarah Pogliits, Loyola  
 Oct. 5 Kathy Berg, UIC  
 Oct. 12 Ericka Malterer, Milwaukee  
 Oct. 19 Lynze Lysen, Butler  
 Oct. 26 Carrie Monnes, Wright State  
 Nov. 2 Patty Murphy, Loyola  
 Nov. 9 Michele Smith, Cleveland State  
 Nov. 16 Jackie Utz, UIC  
 Nov. 23 Ericka Malterer, Milwaukee

**1999**  
 Sept. 7 Laura Dallenbach, Milwaukee  
 Sept. 13 Ericka Malterer, Milwaukee  
 Sept. 20 Jill Greer, UIC  
 Sept. 27 Sue Raschka, Milwaukee  
 Oct. 4 Sarah Pogliits, Loyola  
 Oct. 11 Chrissy Schuria, Milwaukee  
 Oct. 18 Sue Raschka, Milwaukee  
 Oct. 25 Jackie Utz, UIC  
 Nov. 1 Lynze Lysen, Butler  
 Nov. 8 Heather Thomas, Loyola  
 Nov. 15 Laura Dallenbach, Milwaukee

**2000**  
 Sept. 5 Teaha Shepperd, UIC  
 Sept. 11 Laura Dallenbach, Milwaukee  
 Sept. 18 Michele Smith, Cleveland State  
 Sept. 25 Michele Smith, Cleveland State  
 Oct. 2 Keely Norris, Butler  
 Oct. 9 Laura Dallenbach, Milwaukee  
 Oct. 16 Sarah Pogliits, Loyola  
 Oct. 23 Chrissy Schuria, Milwaukee  
 Oct. 30 Lindsey Spoden, Milwaukee  
 Nov. 6 Janelle Tomlinson, Green Bay

**2001**  
 Sept. 4 Keely Norris, Butler  
 Sept. 10 Michelle Iafigliola, Cleveland State  
 Sept. 24 Janelle Tomlinson, Green Bay  
 Oct. 1 Lauren Mikos, Loyola  
 Oct. 8 Karis Day, Wright State  
 Oct. 15 Karis Day, Wright State  
 Oct. 22 Chrissy Schurla, Milwaukee  
 Oct. 29 Karis Day, Wright State  
 Nov. 5 Lauren Mikos, Loyola

**2002**  
 Sept. 2 Karis Day, Wright State  
 Sept. 9 Karis Day, Wright State  
 Sept. 16 Michelle Iafigliola, Cleveland State  
 Sept. 23 Janelle Tomlinson, Green Bay  
 Sept. 30 Tricia Naseman, Wright State  
 Oct. 7 Sarah Potts, Milwaukee  
 Oct. 14 Shari Davis, Loyola  
 Oct. 21 Lindsey Spoden, Milwaukee  
 Oct. 28 Janelle Tomlinson, Green Bay  
 Nov. 4 Jamie Bouyer, Cleveland State  
 Nov. 11 Shari Davis, Loyola  
 Nov. 18 Lauren Holbrook, Loyola

**2003**  
 Sept. 2 Lindsey Spoden, Milwaukee  
 Sept. 8 Janelle Tomlinson, Green Bay  
 Sept. 15 Lindsey Spoden, Milwaukee  
 Sept. 22 Jamie Bouyer, Cleveland State  
 Sept. 29 Tricia Naaseman, Wright State  
 Oct. 6 Lauren Holbrook, Loyola  
 Oct. 13 Areal Bienemy, Butler  
 Oct. 20 Janelle Tomlinson, Green Bay  
 Oct. 27 Jessie Theys, Green Bay  
 Nov. 3 Karen Fruit, Milwaukee  
 Nov. 10 Ashlei Nofzinger, Loyola  
 Nov. 17 Larissa Cattanach, Milwaukee

**2004**  
 Sept. 6 Karen Fruit, Milwaukee  
 Sept. 13 Lauren Holbrook, Loyola  
 Sept. 20 Jamie Bouyer, Cleveland State  
 Sept. 27 Hilary Stromath, Loyola  
 Oct. 4 Karen Fruit, Milwaukee  
 Oct. 11 Areal Bienemy, Butler  
 Oct. 18 Nichol Amberg, Loyola  
 Karen Fruit, Milwaukee  
 Oct. 25 Megan Hoffman, UIC  
 Nov. 1 Kali Carter, Butler  
 Karen Fruit, Milwaukee  
 Nov. 9 Jamie Bouyer, Cleveland State

## ALL-TIME PLAYER OF THE WEEK AWARD LEADERS

Christy Peters, Notre Dame .....	6
Janelle Tomlinson, Green Bay .....	6
Karis Day, Wright State .....	5
Karen Fruit, Milwaukee .....	5
Jamie Bouyer, Cleveland State .....	4
Laura Dallenbach, Milwaukee .....	4
Jessica Fiebelkorn, Notre Dame .....	4
Ericka Malterer, Milwaukee .....	4
Becky Peters, Milwaukee .....	4
Amy Pickett, Butler .....	4
Missy Sartorelli, Loyola .....	4
Lindsey Spoden, Milwaukee .....	4
Jackie Utz, UIC .....	4
Katie Walsh, UIC .....	4

## Horizon League Volleyball Players of the Week

**2005**  
**Offensive**  
 Aug. 29 Leanne Felsing, Milwaukee  
 Sept. 5 Danielle Siefker, Cleveland State  
 Sept. 12 Ambria Springer, UIC  
 Sept. 19 Jackie Rosen, Green Bay  
 Sept. 26 Maura McCarthy, UIC  
 Oct. 3 Betty Slinger, Green Bay  
 Oct. 10 Katarina Nedeljkovic, UIC  
 Oct. 17 Nickole Kennedy, Cleveland State  
 Oct. 24 Jenna Maddocks, Cleveland State  
 Oct. 31 Melissa David, Milwaukee  
 Nov. 7 Sarah Elmer, Loyola  
 Nov. 14 Rachel Kuebbing, Milwaukee

**2006**  
**Offensive**  
 Aug. 28 Liz Fazio, Cleveland State  
 Sept. 4 Leanne Felsing, Milwaukee  
 Sept. 11 Ebony Barbosa, Youngstown State  
 Sept. 18 Tara Geegan, Wright State  
 Sept. 25 Melissa David, Milwaukee  
 Oct. 2 Katarina Nedeljkovic, UIC  
 Oct. 9 Cheryl Hegemann, Milwaukee  
 Oct. 16 Betty Slinger, Green Bay  
 Oct. 23 Leanne Felsing, Milwaukee  
 Oct. 30 Cheryl Hegemann, Milwaukee  
 Nov. 6 Beth Greulich, Cleveland State  
 Nov. 13 Sarah Elmer, Loyola

**Defensive**  
 Amanda Cindric, Youngstown State  
 Becky Peters, Milwaukee  
 Megan Knightly, Butler  
 Jenni Ramminger, Cleveland State  
 Megan Knightly, Butler  
 Becky Peters, Milwaukee  
 Becky Peters, Milwaukee  
 Taylor Gerlach, Wright State  
 Sarah Rauen, Green Bay  
 Megan Knightly, Butler  
 Danielle Siefker, Cleveland State  
 Becky Lowery, Wright State

**Defensive**  
 Ambria Springer, UIC  
 Ann Deelo, Loyola  
 Danielle Siefker, Cleveland State  
 Jordan Bateman, Cleveland State  
 Sarah Poling, Wright State  
 Jordan Bateman, Cleveland State  
 Ann Deelo, Loyola  
 Becky Peters, Milwaukee  
 Michelle DeGeeter, Butler  
 Ann Deelo, Loyola  
 Sarah Rauen, Green Bay  
 Megan Elfering, Green Bay



**Milwaukee's Leanne Felsing garnered League Offensive Player-of-the-Week recognition three times for the Panthers.**

Note: One Player of the Week was selected each week among all sports competing through 1991-92; each sport honored its own Player of the Week starting in 1992-93.

## Horizon League Volleyball Honors

Year	Player of the Year
1986	
1987	Mary Just, Loyola
1988	Jill Taylor, Butler
1989	Lori Adams, Butler
1990	Beth Christiansen, Butler Stacia Mellinger, Butler
1991	Julie McShane, Loyola
1992	Jessica Fiebelkorn, Notre Dame
1993	Christy Peters, Notre Dame
1994	Christy Peters, Notre Dame
1995	Arian Adams, Loyola
1996	Beth Burkholder, Northern Illinois
1997	Jennifer Kintzel, Butler
1998	Patty Murphy, Loyola
1999	Sue Raschka, Milwaukee
2000	Laura Dallenbach, Milwaukee
2001	Karis Day, Wright State
2002	Tari Boutin, Milwaukee
2003	Lindsey Spoden, Milwaukee Janelle Tomlinson, Green Bay
2004	Karen Fruit, Milwaukee
2005	Nickole Kennedy, Cleveland State
2006	Cheryl Hegemann, Milwaukee

Coach of the Year
Jona Braden, Butler
Jona Braden, Butler
Janet Baier-Howes, Saint Louis
Julie Biermann-Weaver, Dayton
Julie Biermann-Weaver, Dayton
Debbie Brown, Notre Dame
Debbie Brown, Notre Dame
Debbie Brown, Notre Dame
Debbie Brown, Notre Dame
Therese Boyle-Niego, Loyola
Kathy Litzau, Milwaukee
Sharon Dingman, Butler
Kathy Litzau, Milwaukee
Kathy Litzau, Milwaukee
Liz Nelson, Loyola
Kathy Litzau, Milwaukee
Joylynn Tracy, Wright State
Liz Nelson, Loyola
Kathy Litzau, Milwaukee
Kathy Litzau, Milwaukee
Chuck Voss, Cleveland State
Kathy Litzau, Milwaukee

Newcomer of the Year
Missy Sartorelli, Loyola
Jenny Birkner, Notre Dame
Angie Harris, Notre Dame
Amy Pickett, Butler
Ericka Malterer, Milwaukee
Keelyn Krill, Milwaukee
Laura Dallenbach, Milwaukee
Mandy Gels, Wright State
Lindsey Spoden, Milwaukee
Lauren Holbrook, Loyola
Alisa Hatcher, Cleveland State
Meghan Keck, UIC
Courtney Ashley, Loyola
Leanne Felsing, Milwaukee
Becky Peters, Milwaukee
Jenni Ramminger, Cleveland State
Ruth Boscaljon, Youngstown State
Beth Greulich, Cleveland State

Defensive Player of the Year
Lauren Dallenbach, Milwaukee
Krista Olearnich, Green Bay
Allie Smerz, Wright State
Megan Knightly, Butler
Megan Knightly, Butler
Ann Deelo, Loyola



**Kathy Litzau won seven Coach-of-the-Year awards.**

# Horizon League Volleyball Records

## Single-Match Records

### Kills

- 39 - Joanna Downie, Wright State, vs. Toledo, Sept. 24, 1996
- 39 - Katie Walsh, UIC, vs. Wright State, Oct. 18, 1996
- 36 - Ericka Malterer, Milwaukee, vs. Marquette, Sept. 8, 1998
- 34 - Joanna Downie, Wright State, vs. UIC, Oct. 18, 1996
- 33 - on five occasions (Last: Kali Carter, Butler, vs. Western Illinois, Sept. 10, 2004)

### Attacks

- 88 - Laura Baire, Butler, vs. Louisville, Nov. 3, 1993
- 87 - Lori Adams, Butler, vs. UIC, Sept. 12, 1989
- 85 - Joanna Downie, Wright State, vs. UIC, Oct. 18, 1996
- 85 - Stacey Gilligan, Duquesne, Oct. 31, 1992
- 85 - Missy Sartorelli, Loyola, vs. Wright State, Sept. 30, 1995

### Hitting Percentage

- .889 - Michele Smith, Cleveland State, vs. Eastern Michigan, Sept. 19, 2000
- .875 - Colleen Cunningham, Loyola, vs. Eastern Illinois, Oct. 12, 1991
- .857 - Nikki Valentine, Loyola, vs. UIC, Oct. 7, 1994
- .857 - Colleen Cunningham, Loyola, vs. UIC, Oct. 16, 1991
- .857 - Arian Adams, Loyola, vs. Tennessee-Martin, Sept. 9, 1994
- .833 - on four occasions (Last: Jill Waddell, Loyola, vs. Tenn.-Martin, Sept. 9, 1994)

### Assists

- 91 - Erica Anderson, UIC, vs. DePaul, Oct. 13, 1999
- 87 - Julie McShane, Loyola, vs. Valparaiso, Oct. 5, 1990
- 86 - Angie Pasquinelli, Youngstown State, vs. Canisius, Aug. 28, 2005
- 86 - Katie Schneider, Milwaukee, vs. Wright State, Oct. 4, 1997
- 85 - Katie Schneider, Milwaukee, vs. Northern Illinois, Nov. 16, 1996
- 82 - Patty Murphy, Loyola, vs. Southeast Missouri State, Sept. 6, 1997
- 82 - Lindsey Spoden, Milwaukee, vs. DePaul, Oct. 18, 2000

### Service Aces

- 15 - Janelle Tomlinson, Green Bay, vs. Chicago State, Sept. 23, 2001
- 11 - Vicki Spahn, Evansville, vs. Saint Louis, 1991
- 9 - Mary Sarna, Loyola, vs. Dayton, Oct. 25, 1991
- 9 - Laura Baire, Butler, vs. Wright State, Oct. 7, 1995
- 9 - Renee Nash, Loyola, vs. DePaul, Sept. 1, 1998

### Digs

- 45 - Jessica Taylor, Butler, vs. UIC, Sept. 12, 1989
- 41 - Becky Peters, Milwaukee, vs. George Washington, Sept. 15, 2005
- 41 - Megan Knightly, Butler, vs. Youngstown State, Sept. 24, 2005
- 40 - Nina Inic, Butler, vs. Green Bay, Oct. 11, 2006
- 38 - Stacey Gilligan, Dayton, Oct. 30, 1992
- 38 - Lynze Lysen, Butler, vs. Wright State, Oct. 16, 1998

### Block Solos

- 10 - Chris Essington, Butler, vs. Valparaiso, Sept. 27, 1986
- 8 - Kerri Childress, Loyola, vs. Northern Illinois, Oct. 2, 1990
- 8 - Chris Essington, Butler, vs. Notre Dame, Sept. 19, 1986
- 8 - Jill Taylor, Butler, vs. Notre Dame, Sept. 12, 1987

### Block Assists

- 13 - Danielle Siefker, Cleveland State, vs. Milwaukee, Nov. 20, 2004
- 12 - Jill Waddell, Loyola, vs. Wright State, Oct. 20, 1995
- 12 - Kelly Price, Loyola, vs. Northwestern, Sept. 12, 1997
- 12 - Lizzy Gunn, Wright State, vs. Loyola, Sept. 22, 2006
- 11 - Beth Christiansen, Butler, vs. UIC, Sept. 12, 1989
- 11 - Kerri Childress, Loyola, vs. Green Bay, Sept. 14, 1990
- 11 - Carrie Monnes, Wright State, vs. Northern Illinois, Oct. 21, 1995
- 11 - Nickole Kennedy, Cleveland State, vs. Kent State, Sept. 1, 2004
- 11 - Lizzy Gunn, Wright State, vs. South Florida, Sept. 9, 2006

### Total Blocks

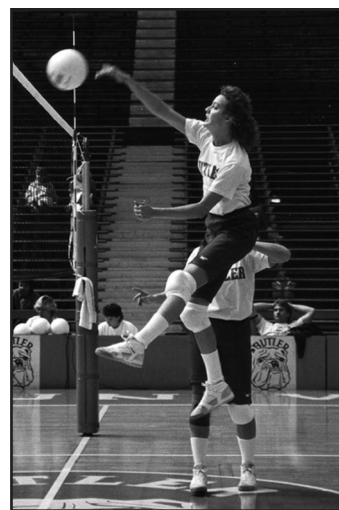
- 16 - Beth Christiansen, Butler, vs. UIC, Sept. 12, 1989
- 16 - Trudy Vande Berg, Milwaukee, vs. St. Mary's (CA), Sept. 6, 1997
- 15 - Lizzy Gunn, Wright State, vs. Loyola, Sept. 22, 2006
- 14 - Chris Essington, Butler, vs. Valparaiso, Sept. 27, 1986
- 14 - Beth Christiansen, Butler, vs. Xavier, Oct. 13, 1989



*Angie Pasquinelli of Youngstown State logged 86 assists in a match versus Canisius on Aug. 28, 2005.*



*Danielle Siefker recorded 13 block assists for Cleveland State versus Milwaukee on Nov. 20, 2004.*



*Butler's Beth Christiansen holds the Horizon League's single-match blocks record with 16 versus UIC in 1989.*

# Horizon League Volleyball Records

## Single-Season Records

### Kills

640 - Carrie Cordonnier, Dayton, 1988  
620 - Janelle Tomlinson, Green Bay, 2003  
600 - Laura Baire, Butler, 1993  
592 - Janelle Tomlinson, Green Bay, 2002  
567 - Amy Pickett, Butler, 1996  
564 - Missy Sartorelli, Loyola, 1993  
539 - Stephanie Wesley, Butler, 1993  
532 - Therese O'Neill, Loyola, 1991  
531 - Kathy Kalb, Xavier, 1988  
531 - Katarina Nedeljkovic, UIC, 2005  
530 - Kim King, Xavier, 1994  
523 - Missy Sartorelli, Loyola, 1994  
516 - Jackie Rosen, Green Bay, 2005  
512 - Katie Walsh, UIC, 1996  
512 - Karen Fruit, Milwaukee, 2004

### Attacks

1636 - Stephanie Wesley, Butler, 1993  
1618 - Janelle Tomlinson, Green Bay, 2003  
1603 - Laura Baire, Butler, 1993  
1565 - Carrie Cordonnier, Dayton, 1988  
1435 - Therese O'Neill, Loyola, 1991  
1434 - Julie Robinson, Xavier, 1990  
1377 - Christy Peters, Notre Dame, 1993  
1374 - Kim King, Xavier, 1993  
1354 - Missy Sartorelli, Loyola, 1993  
1345 - Amy Pickett, Butler, 1996

### Hitting Percentage

.423 - Michele Smith, Cleveland State, 2000  
.399 - Jenny Geraci, Dayton, 1992  
.388 - Jamie Bouyer, Cleveland State, 2004  
.387 - Jen Moore, Wright State, 1994  
.385 - Kerri Chlidress, Loyola, 1989  
.364 - Jessica Toth, Cleveland State, 1997  
.364 - Beth Greulich, Cleveland State, 2006  
.363 - Jen Harvey, Loyola, 1994  
.361 - Jamie Bouyer, Cleveland State, 2003  
.357 - Cathy Wojciechowski, Dayton, 1990

### Assists

1702 - Leslie Kuhn, Green Bay, 2003  
1659 - Jenny Arentz, Butler, 1993  
1612 - Julie McShane, Loyola, 1991  
1558 - Katie Schneider, Milwaukee, 1998  
1501 - Julie McShane, Loyola, 1990  
1476 - Katie Kozak, UIC, 2006  
1468 - Katie Schneider, Milwaukee, 1999  
1467 - Katie Kozak, UIC, 2005  
1464 - Susie Checkett, Xavier, 1994  
1464 - Nikki Valentine, Loyola, 1994  
1464 - Lauren Holbrook, Loyola, 2005

### Service Aces

87 - Diane Davis, Evansville, 1989  
87 - Cathy Wojciechowski, Dayton, 1991  
87 - Kim Seib, Evansville, 1993  
85 - Cindy Moffitt, Dayton, 1988  
85 - Jill Taylor, Butler, 1988  
81 - Janelle Tomlinson, Green Bay, 2001  
79 - Kim King, Xavier, 1994  
75 - Angie Harris, Notre Dame, 1994  
72 - Kim Moorleghen, Saint Louis, 1988  
72 - Janelle Tomlinson, Green Bay, 2003

### Digs

579 - Stacy Gilligan, Duquesne, 1992  
562 - Ann Deelo, Loyola, 2006  
550 - Krista Olearnick, Green Bay, 2002  
540 - Allie Smerz, Wright State, 2003  
522 - Laura Baire, Butler, 1993  
522 - Janelle Tomlinson, Green Bay, 2003  
518 - Megan Knightly, Butler, 2005  
518 - Sarah Rauon, Green Bay, 2005  
517 - Becky Peters, Milwaukee, 2005  
504 - Jackie Rosen, Green Bay, 2003  
501 - Taylor Gerlach, Wright State, 2004  
500 - Christy Peters, Notre Dame, 1993

### Block Solos

102 - Janet Darpel, Saint Louis, 1987  
92 - Kathy Kalb, Xavier, 1988  
88 - Chris Essington, Butler, 1987  
75 - Kathy Kalb, Xavier, 1989  
66 - Liza Osterhage, Wright State, 1999  
62 - Sherry Chatel, Xavier, 1987  
62 - Jill Spurgeon, Butler, 1988  
58 - Jill Spurgeon, Butler, 1987  
57 - Stephanie Peschke, Xavier, 1988  
56 - Kerri Childress, Loyola, 1990

### Block Assists

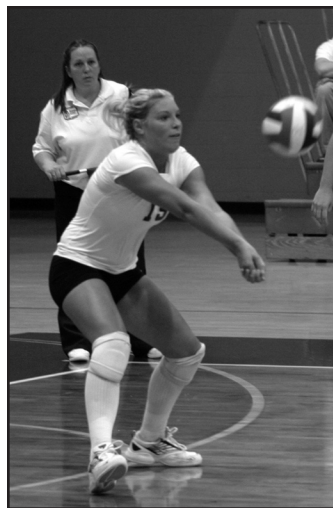
166 - Jamie Bouyer, Cleveland State, 2003  
155 - Jessica Fiebelkorn, Notre Dame, 1991  
150 - Jill Spurgeon, Butler, 1988  
144 - Andrea Sanders, Wright State, 1994  
135 - Kathy Kalb, Xavier, 1988  
133 - Missy Hathorn, Xavier, 1994  
133 - Becky Stewart, Northern Illinois, 1996  
133 - Krystal Hendrix, Butler, 2003  
131 - Carrie Monnes, Wright State, 1995  
131 - Christy Mikesell, Northern Illinois, 1996  
131 - Danielle Siefker, Cleveland State, 2004

### Total Blocks

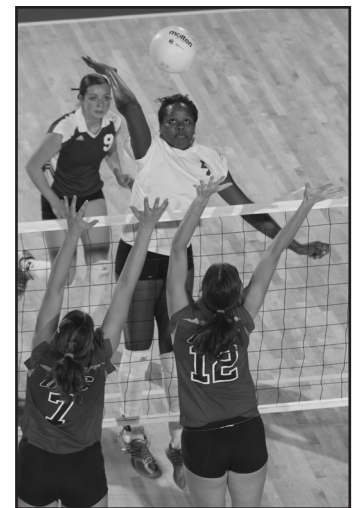
227 - Kathy Kalb, Xavier, 1988  
212 - Jill Spurgeon, Butler, 1988  
204 - Chris Essington, Butler, 1986  
199 - Jamie Bouyer, Cleveland State, 2003  
186 - Jessica Fiebelkorn, Notre Dame, 1991  
182 - Kathy Kalb, Xavier, 1989  
177 - Janet Darpel, Saint Louis, 1987  
175 - Andrea Sanders, Wright State, 1994  
174 - Carrie Monnes, Wright State, 1995  
163 - Mandy Goldman, Evansville, 1998



Green Bay's Janelle Tomlinson registered 620 kills in 2003 and 592 the previous season.



Wright State's Taylor Gerlach is one of 12 League players to collect 500 digs in a season (501 in 2004).



Cleveland State's Jamie Bouyer posted a Horizon League-record 166 block assists in the 2003 campaign.

# Horizon League Volleyball Records

## Career Records

### Kills

1954 - Janelle Tomlinson, Green Bay, 2000-03  
1882 - Missy Sartorelli, Loyola, 1992-95  
1812 - Laura Baire, Butler, 1992-95  
1801 - Amy Pickett, Butler, 1995-98  
1706 - Arian Adams, Loyola, 1994-97  
1646 - Teaha Shepperd, UIC, 2000-03  
1626 - Jamie Bouyer, Cleveland State, 2001-04  
1611 - Therese O'Neill, Loyola, 1989-92  
1599 - Jessica Taylor, Butler, 1989-92  
1598 - Kali Carter, Butler, 2001-04

### Attacks

4932 - Laura Baire, Butler, 1992-95  
4871 - Kali Carter, Butler, 2001-04  
4850 - Janelle Tomlinson, Green Bay, 2000-03  
4648 - Missy Sartorelli, Loyola, 1992-95  
4618 - Jessica Taylor, Butler, 1989-92  
4607 - Amy Pickett, Butler, 1995-98  
4251 - Lynze Lysen, Butler, 1996-2000  
4214 - Therese O'Neill, Loyola, 1989-92  
4078 - Arian Adams, Loyola, 1994-97  
4048 - Joanna Downie, Wright State, 1995-98

### Hitting Percentage

.339 - Jamie Bouyer, Cleveland State, 2001-04  
.326 - Michele Smith, Cleveland State, 1997-2000  
.295 - Julie McShane, Loyola, 1990-92  
.285 - Chrissy Schurla, Milwaukee, 1998-01  
.281 - Amy Pickett, Butler, 1995-98  
.281 - Keely Norris, Butler, 2000-03  
.280 - Erica Anderson, UIC, 1998-2000  
.279 - Meghan Keck, UIC, 2002-03  
.277 - Nikki Valentine, Loyola, 1992-94  
.277 - Shari Davis, Loyola, 1999-2002

### Assists

5483 - Jennifer Kintzel, Butler, 1994-97  
5393 - Lauren Holbrook, Loyola, 2001-04  
5331 - Leslie Kuhn, Green Bay, 2001-04  
5276 - Katie Schneider, Milwaukee, 1996-99  
5233 - Lindsey Spoden, Milwaukee, 2000-03  
5044 - Mandy Gels, Wright State, 1999-2002  
4838 - Stacia Mellinger, Butler, 1987-90  
4804 - Kelly Crain, Cleveland State, 2001-04  
4443 - Jenny Arentz, Butler, 1990-93  
4398 - Julie McShane, Loyola, 1990-92

### Service Aces

260 - Janelle Tomlinson, Green Bay, 2000-03  
222 - Jill Taylor, Butler, 1985-88  
215 - Jennifer Kintzel, Butler, 1994-97  
200 - Therese O'Neill, Loyola, 1989-92  
193 - Lisa Sampson, Evansville, 1990-93  
192 - Amy Ludwig, Cleveland State, 1989-92  
192 - Laura Baire, Butler, 1992-95  
173 - Colleen Cunningham, Loyola, 1988-91  
170 - Renee Nash, Loyola, 1997-2000  
169 - Lindsey Spoden, Milwaukee, 2000-03

### Digs

1742 - Ann Deelo, Loyola, 2003-06  
1737 - Megan Knightly, Butler, 2002-05  
1722 - Jessica Taylor, Butler, 1989-92  
1678 - Jennifer Kintzel, Butler, 1994-97  
1637 - Laura Baire, Butler, 1994-97  
1600 - Lauren Dallenbach, Milwaukee, 1998-2001  
1436 - Kali Carter, Butler, 2001-04  
1435 - Janelle Tomlinson, Green Bay, 2000-03  
1426 - Jenny Arentz, Butler, 1990-93  
1411 - Teaha Shepperd, UIC, 2000-03

### Block Solos

213 - Kathy Kalb, Xavier, 1987-89  
202 - Chris Essington, Butler, 1983-86  
188 - Beth Christiansen, Butler, 1987-90  
163 - Jill Spurgeon, Butler, 1986-88  
162 - Carrie Monnes, Wright State, 1995-98  
160 - Chris DeWell, Butler, 1982-85  
154 - Lisa Osterhage, Wright State, 1998-2001  
143 - Cass Dolhancyk, Cleveland State, 1993-96  
133 - Kellii Fisher, Wright State, 1995-98  
132 - Stephanie Peschke, Xavier, 1988-90

### Block Assists

485 - Jamie Bouyer, Cleveland State, 2001-04  
466 - Danielle Siefker, Cleveland State, 2003-06  
414 - Krystal Hendrix, Butler, 2003-06  
413 - Amy Pickett, Butler, 1995-98  
392 - Carrie Monnes, Wright State, 1995-98  
392 - Jessie Theys, Green Bay, 2000-03  
390 - Cheryl Hegemann, Milwaukee, 2003-06  
338 - Keely Norris, Butler, 1999-2002  
334 - Missy Hathorn, Xavier, 1992-94  
334 - Janelle Tomlinson, Green Bay, 2000-03

### Total Blocks

558 - Jamie Bouyer, Cleveland State, 2001-04  
554 - Carrie Monnes, Wright State, 1995-98  
536 - Amy Pickett, Butler, 1995-98  
534 - Danielle Siefker, Cleveland State, 2003-06  
521 - Kathy Kalb, Xavier, 1987-89  
519 - Beth Christiansen, Butler, 1987-90  
517 - Chris Essington, Butler, 1983-86  
489 - Jill Spurgeon, Butler, 1985-88  
473 - Jessie Theys, Green Bay, 2000-03  
459 - Krystal Hendrix, Butler, 2003-06

# Horizon League Volleyball Championship Records

### Individual Kills, Match

30 - Janelle Tomlinson, Green Bay, vs. UIC, 2003  
30 - Nicole Amberg, Loyola, vs. Cleveland State, 2004

### Individual Attempts, Match

76 - Julie Robinson, Xavier, vs. Marquette, 1990  
76 - Christine Choquette, Saint Louis, vs. Notre Dame, 1990  
76 - Nicole Amberg, Loyola, vs. Cleveland State, 2004  
76 - Karen Fruit, Milwaukee, vs. Cleveland State, 2004

### Individual Attack Pct., Match (15+ attempts)

.800 (12-0-15) - Lindsey Spoden, Milwaukee, vs. Butler, 2003

### Individual Service Aces, Match

7 - Diane Davis, Evansville, vs. Xavier, 1987

### Individual Block Solos, Match

6 - Beth Christiansen, Butler, vs. Evansville, 1990  
6 - Jill Spurgeon, Butler, vs. Saint Louis, 1988

### Individual Digs, Match

34 - Kathy Kalb, Xavier, vs. Evansville, 1987  
34 - Arian Adams, Loyola, vs. Milwaukee, 1997  
34 - Sarah Rauen, Green Bay vs. Youngstown State, 2005

### Individual Kills, Tournament

78 - Mary Just, Loyola, 1987

### Individual Attempts, Tournament

178 - Lori Adams, Butler, 1988

### Individual Service Aces, Tournament

13 - Jody Fahey, Xavier, 1986

### Individual Block Solos, Tournament

12 - Jill Spurgeon, Butler, 1988

### Individual Digs, Tournament

86 - Ann Deelo, Loyola, 2005

### Team Kills, Match

94 - Butler vs. Milwaukee, 2000

### Team Attempts, Match

247 - Butler vs. Milwaukee, 2000

### Team Attack Percentage, Match

.465 - Loyola vs. La Salle, 1993

### Team Service Aces, Match

17 - Dayton vs. Xavier, 1992

### Team Block Solos, Match

11 - Xavier vs. Evansville, 1987  
11 - Butler vs. Loyola, 1987  
11 - Notre Dame vs. Loyola, 1992

### Team Digs, Match

145 - Xavier vs. Evansville, 1987

### Team Kills, Tournament

234 - Butler, 1988

### Team Service Aces, Tournament

40 - Butler, 1988

### Team Block Solos, Tournament

22 - Butler, 1987

### Team Digs, Tournament

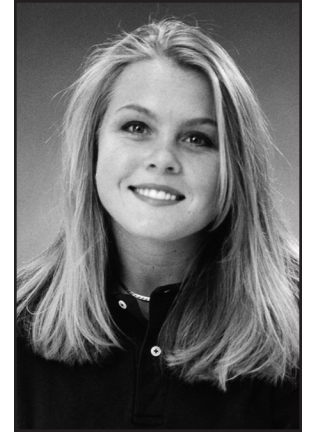
275 - Evansville, 1988

# Horizon League Volleyball Annual Leaders

Year	Kills
1986	Patty Bruns, Xavier.....407
1987	Mary Just, Loyola.....496
1988	Carrie Cordonnier, Dayton.....640
1989	Lori Adams, Butler.....486
1990	Julie Robnson, Xavier.....500
1991	Therese O'Neill, Loyola.....532
1992	Lori Miller, Loyola.....459
1993	Laura Baire, Butler.....600
1994	Kim King, Xavier.....530
1995	Missy Sartorelli, Loyola.....502
1996	Amy Pickett, Butler.....567
1997	Amy Pickett, Butler.....476
1998	Carrie Monnes, Wright State.....454
1999	Jacki Utz, UIC.....419
2000	Laura Dallenbach, Milwaukee.....429
2001	Janelle Tomlinson, Green Bay.....407
2002	Janelle Tomlinson, Green Bay.....592
2003	Janelle Tomlinson, Green Bay.....620
2004	Karen Fruit, Milwaukee.....512
2005	Katarina Nedeljkovic, UIC.....531
2006	Ambria Springer, UIC.....495

Hitting Percentage
Sheila Johnson, Detroit.....301
Lori Schulz, Evansville.....260
Irene Haugh, Saint Louis.....340
Janet Darpel, Saint Louis.....314
Stacia Mellinger, Butler.....317
Kerri Childress, Loyola.....375
Jenny Geraci, Dayton.....399
Jenny Birkner, Notre Dane.....288
Jen Moore, Wright State.....387
Holly Bauer, Northern Illinois.....315
Becky Stewart, Northern Illinois.....301
Jessica Toth, Cleveland State.....364
Kathy Berg, UIC.....354
Chrissy Schulra, Milwaukee.....329
Michele Smith, Cleveland State.....429
Karis Day, Wright State.....322
Karis Day, Wright State.....338
Jamie Bouyer, Cleveland State.....361
Jamie Bouyer, Cleveland State.....388
Nickole Kennedy, Cleveland State.....318
Beth Greulich, Cleveland State.....364

Assists
Kristen Dorsey, Oral Roberts...1,266
Geri Eber, Loyola.....1,237
Stacia Mellinger, Butler.....1,341
Stacia Mellinger, Butler.....1,331
Jennifer Nunn, Xavier.....1,356
Julie McShane, Loyola.....1,612
Jenny Arentz, Butler.....1,380
Jenny Arentz, Butler.....1,659
Susie Checkett, Xavier.....1,464
Nikki Valentine, Loyola.....1,464
Jennifer Kintzel, Butler.....1,400
Jennifer Kintzel, Butler.....1,365
Jennifer Kintzel, Butler.....1,431
Katie Schneider, Milwaukee.....1,558
Katie Schneider, Milwaukee.....1,468
Kylie Galbraith, Butler.....1,351
Mandy Gels, Wright State.....1,297
Leslie Kuhn, Green Bay.....1,439
Leslie Kuhn, Green Bay.....1,702
Lauren Holbrook, Loyola.....1,464
Katie Kozak, UIC.....1,467
Katie Kozak, UIC.....1,476

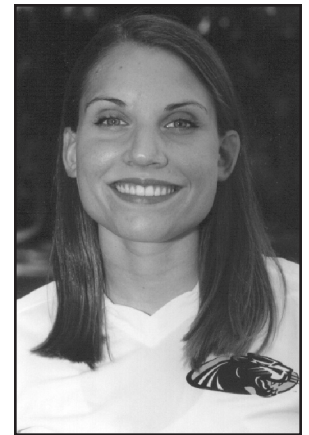


Butler's Jennifer Kintzel led the League in total digs for three consecutive seasons (1994-96).

Year	Service Aces
1986	Tina Gray, Oral Roberts.....66
1987	Sandy Kittel, Saint Louis.....73
1988	Jill Taylor, Butler.....85
	Cindy Moffitt, Dayton.....85
1989	Diane Davis, Evansville.....87
1990	Beth Christiansen, Butler.....60
1991	C. Wojciechowski, Notre Dame.....87
1992	C. Wojciechowski, Notre Dame.....63
1993	Laura Baire, Butler.....59
1994	Kim King, Xavier.....79
1995	Becky Jakala, Northern Illinois.....64
1996	Becky Jakala, Northern Illinois.....57
1997	Jennifer Kintzel, Butler.....67
1998	Kris Barakauska, UIC.....59
1999	Renee Nash, Loyola.....48
2000	Lynze Lysen, Butler.....42
2001	Janelle Tomlinson, Green Bay.....81
2002	Janelle Tomlinson, Green Bay.....70
2003	Janelle Tomlinson, Green Bay.....72
2004	Karen Fruit, Milwaukee.....45
2005	Katarina Nedeljkovic, UIC.....48
2006	Katarina Nedeljkovic, UIC.....54

Digs
Tina Gray, Oral Roberts.....368
Jill Taylor, Butler.....406
Kathy Kalb, Xavier.....492
Lori Adams, Butler.....473
Irene Haugh, Saint Louis.....380
Jessica Taylor, Butler.....433
Jessica Taylor, Butler.....490
Laura Baire, Butler.....522
Jennifer Kintzel, Butler.....419
Jennifer Kintzel, Butler.....435
Jennifer Kintzel, Butler.....417
Heather Cox, Butler.....456
Laura Dallenbach, Milwaukee.....445
Erica Miller, Wright State.....440
Laura Dallenbach, Milwaukee.....424
Vickie Lublow, UIC.....402
Krista Olearnick, Green Bay.....550
Allie Smerz, Wright State.....540
Taylor Gerlach, Wright State.....501
Megan Knightly, Butler.....518
Sarah Rauen, Green Bay.....518
Ann Deelo, Loyola.....562

Total Blocks
Christie Essington, Butler.....204
Janet Darpel, Saint Louis.....187
Kathy Kalb, Xavier.....227
Kathy Kalb, Xavier.....182
Kerri Childress, Loyola.....131
Jessica Fiebelkorn, Notre Dame.....186
Jessica Fiebelkorn, Notre Dame.....140
Gwen Zang, Xavier.....146
Andrea Sanders, Wright State.....175
Carrie Monnes, Wright State.....174
Becky Stewart, Northern Illinois.....148
Carrie Monnes, Wright State.....149
Kathy Berg, UIC.....139
Liza Osterhage, Wright State.....143
Larissa Cattanaach, Milwaukee.....130
Liza Osterhage, Wright State.....137
Annie Buschur, Cleveland State.....146
Jamie Bouyer, Cleveland State.....199
Jamie Bouyer, Cleveland State.....157
Danielle Siefker, Cleveland State.....137
Ambria Springer, UIC.....160



Milwaukee's Karen Fruit topped the League charts with 512 kills and 45 aces in 2004.

## All-Time Standings

Current Members	League			Overall			Former Members	League			Overall		
	W	L	Pct.	W	L	Pct.		W	L	Pct.	W	L	Pct.
Milwaukee	131	39	.771	265	122	.685	Notre Dame	31	3	.912	116	51	.695
Loyola	152	62	.710	432	277	.609	Northern Illinois	33	5	.868	66	32	.673
Butler	139	76	.647	392	278	.585	Oral Roberts	4	1	.800	20	12	.635
UIC	76	94	.447	183	233	.440	Saint Louis	17	10	.630	101	78	.564
Wright State	75	95	.441	177	219	.447	Dayton	16	14	.533	97	80	.548
Cleveland State	57	113	.335	177	218	.448	Xavier	23	31	.426	155	161	.491
Green Bay	50	120	.294	135	261	.341	Duquesne	2	5	.286	16	18	.471
Youngstown State	4	80	.048	55	126	.304	Marquette	2	11	.154	22	43	.338
							Evansville	6	38	.136	83	181	.314
							La Salle	1	21	.045	17	78	.179