

END ELEVATION
 NO.1 END SHOWN
 NO.2 END SIMILAR TO OPPOSITE HAND

I N D E X	
SHEET NO.	SHEET CONTENT
1	TITLE PAGE & END ELEVATION
2	OUTBOARD PROFILE
3	INBOARD PROFILE
4	HOLD & VEHICLE DECK ARRANGEMENTS
5	MEZZANINE & PASSENGER DECK ARRANGEMENTS
6	SUN, HOUSETOP, & PILOTHOUSE DECK ARRANGEMENTS

R E V I S I O N H I S T O R Y			
REV ZONE	DESCRIPTION	DATE	APP'D
A	1. DELETED CURTAIN PLATE CUTOUTS.	JUL 3/5/09	WCN
A & 4	2. MOVED NO.1 END ELEV. BHD.		
SHT 4	3. REVISED WT DOOR WIDTHS IN HOLD.		
SHT 2 & 4	4. ADDED DOORS IN CURTAIN PLATE.		
3--4D & 4	5. CHANGED SLIDING FD FROM POCKET DOORS TO FLUSH MOUNTED.		
B	1. REVISED WT DOOR WIDTHS IN HOLD.	JUL 3/16/09	WCN
SHT 5	2. UPDATED FOOD SERVICE ARRANGEMENT.		
SHT 4	3. REVISED RESCUE BOAT MNT.	JUN 03/23/09	WCN
SHT 5	ENCLOSURE BHD'S.		

GENERAL NOTES

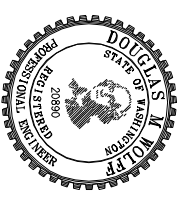
1. FOR PURPOSES OF THIS DRAWING, NO.1 END IS CONSIDERED TO BE THE BOW, NO.2 END THE STERN. NOTATIONS OF PORT AND STARBOARD ARE BASED ON THE BOW BEING NO.1 END.

PRINCIPLE DIMENSIONS

LENGTH OVERALL: 273'-8"
 LENGTH DESIGN LOAD WATERLINE: 251'-0"
 LENGTH BETWEEN PERPENDICULARS: 238'-0"
 BEAM OVER GUARDS: 64'-0"
 DEPTH AT SIDE (MIDSHIP): 17'-6"
 DRAFT TO DWL: 11'-0"
 DISPLACEMENT: 2050 LSW
 CAPACITIES:
 VEHICLES: 64 WSF STANDARD CARS
 PASSENGERS: 750
 FRESH WATER: 20,750 GAL
 POTABLE WATER: 3,000 GAL
 SANITARY SUPPLY WATER: 3,000 GAL
 SEWAGE HOLDING: 8,000 GAL

REFERENCES

- 9200-850-100-1 LINES PLAN
- 9200-750-832-1 TECHNICAL SPECIFICATION



SIGNED COPY
 IS ON FILE

WASHINGTON STATE
 DEPARTMENT OF TRANSPORTATION
 WASHINGTON STATE FERRIES

Elliott Bay Design Group
 Seattle • New Orleans

PROJECT
 NEW 60-AUTO FERRY

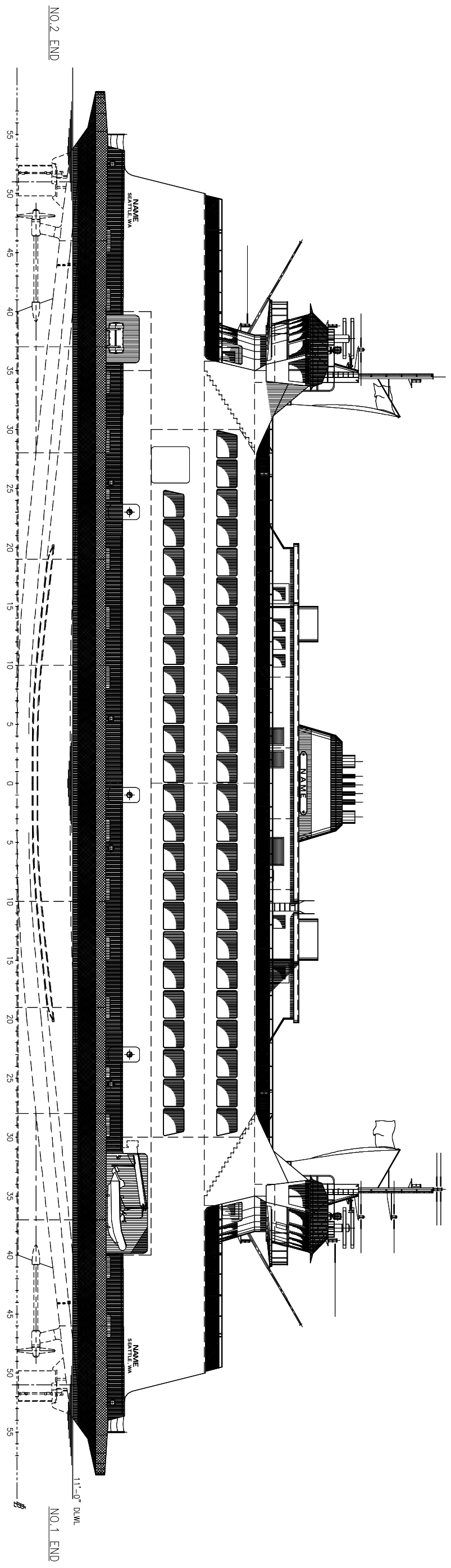
PROFILES AND ARRANGEMENTS

DATE	REV	BY
DATE 9/3/08		
DATE 9/3/08		
DATE 9/3/08		

DATE	REV	BY
DATE 9/3/08		
DATE 9/3/08		
DATE 9/3/08		

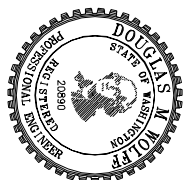
DATE	REV	BY
DATE 9/3/08		
DATE 9/3/08		
DATE 9/3/08		

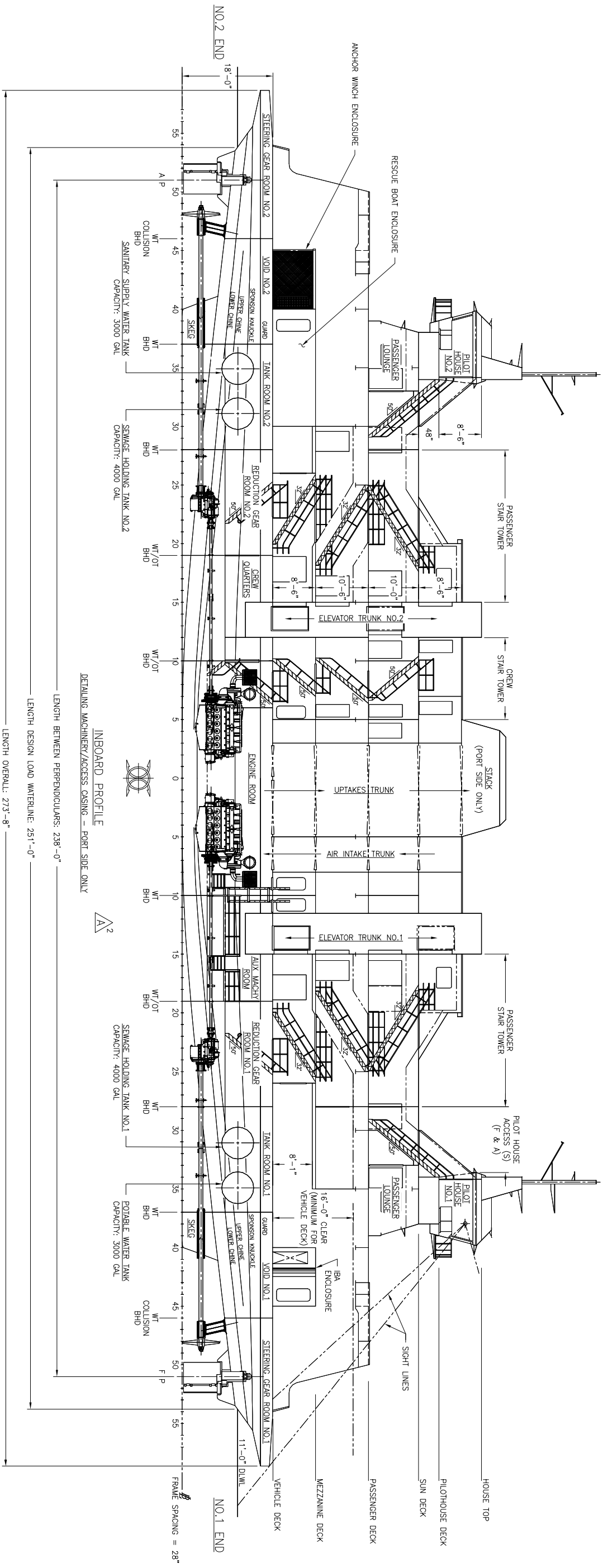
DATE	REV	BY
DATE 9/3/08		
DATE 9/3/08		
DATE 9/3/08		



OUTBOARD PROFILE
 A 1/24
 B 3

SIGNED COPY
 IS ON FILE

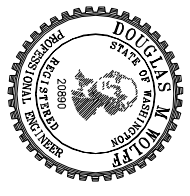


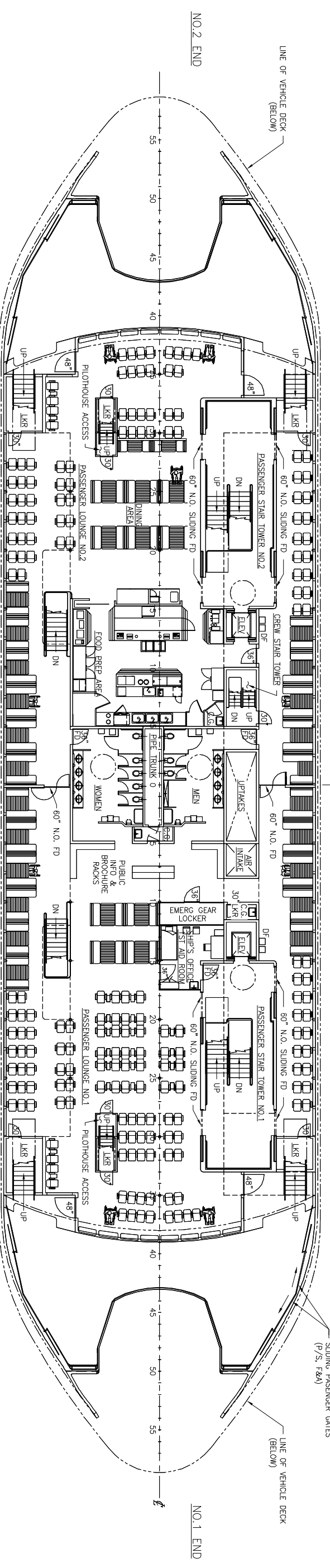


INBOARD PROFILE
 DETAILING MACHINERY/ACCESS CASING - PORT SIDE ONLY

LENGTH BETWEEN PERPENDICULARS: 238'-0"
 LENGTH DESIGN LOAD WATERLINE: 251'-0"
 LENGTH OVERALL: 273'-8"

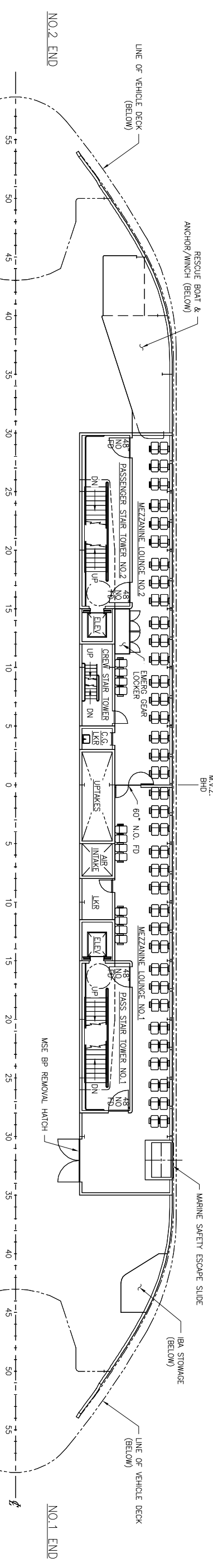
SIGNED COPY
 IS ON FILE





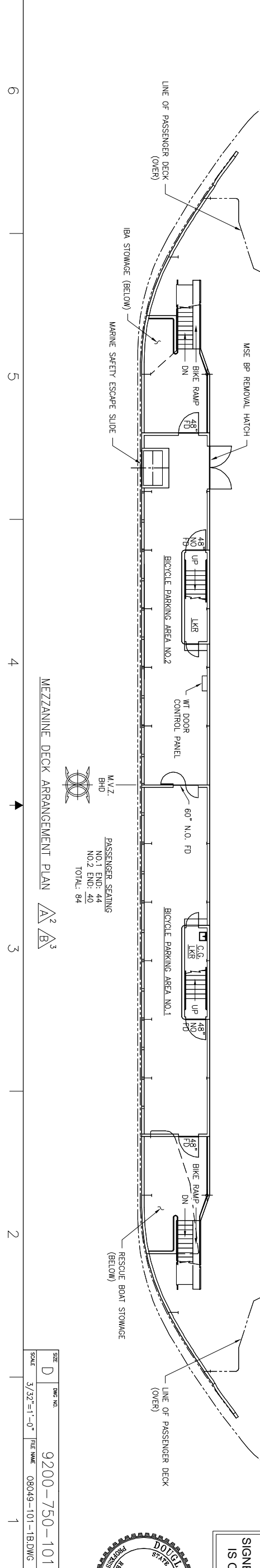
PASSENGER DECK ARRANGEMENT PLAN

M.V.Z.
 BHD
 PASSENGER SEATING
 NO.1 END: 188
 NO.2 END: 163
 TOTAL: 351



PASSENGER DECK ARRANGEMENT PLAN

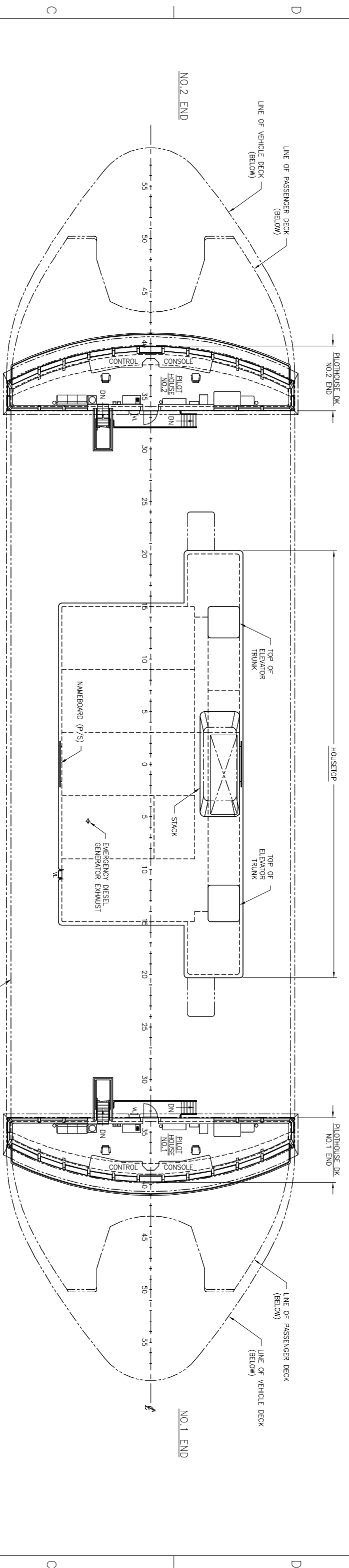
M.V.Z.
 BHD
 PASSENGER SEATING
 NO.1 END: 44
 NO.2 END: 40
 TOTAL: 84



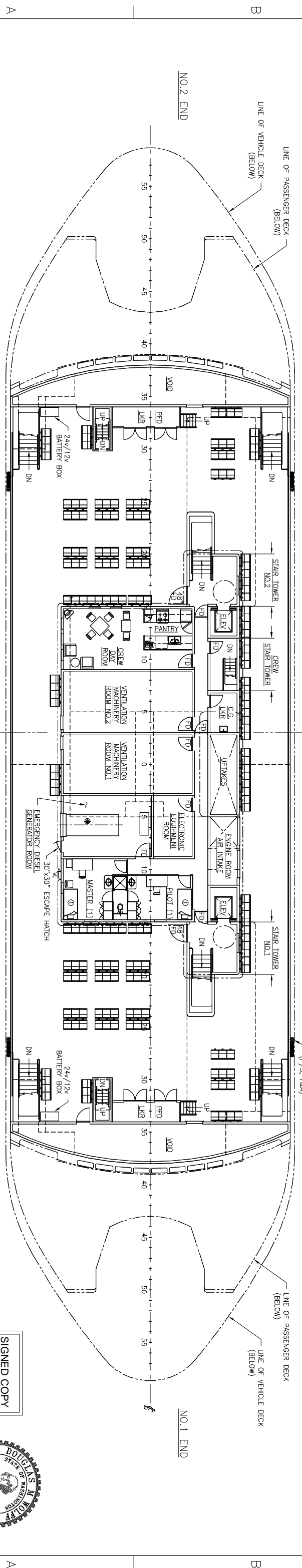
MEZZANINE DECK ARRANGEMENT PLAN



SIGNED COPY
 IS ON FILE



HOUSE TOP/PILOTHOUSE DECK ARRANGEMENT PLAN



SUN DECK ARRANGEMENT PLAN

PASSENGER SEATING
 NO. 1 END: 91
 NO. 2 END: 99
 TOTAL: 190

SIGNED COPY
 IS ON FILE

