



Michelle Scray
Assistant Chief Probation Officer

Mission Statement

The Probation Department protects the community through assessment, treatment and control of adult and juvenile offenders by providing a range of effective services based on legal requirements and recognized professional standards.



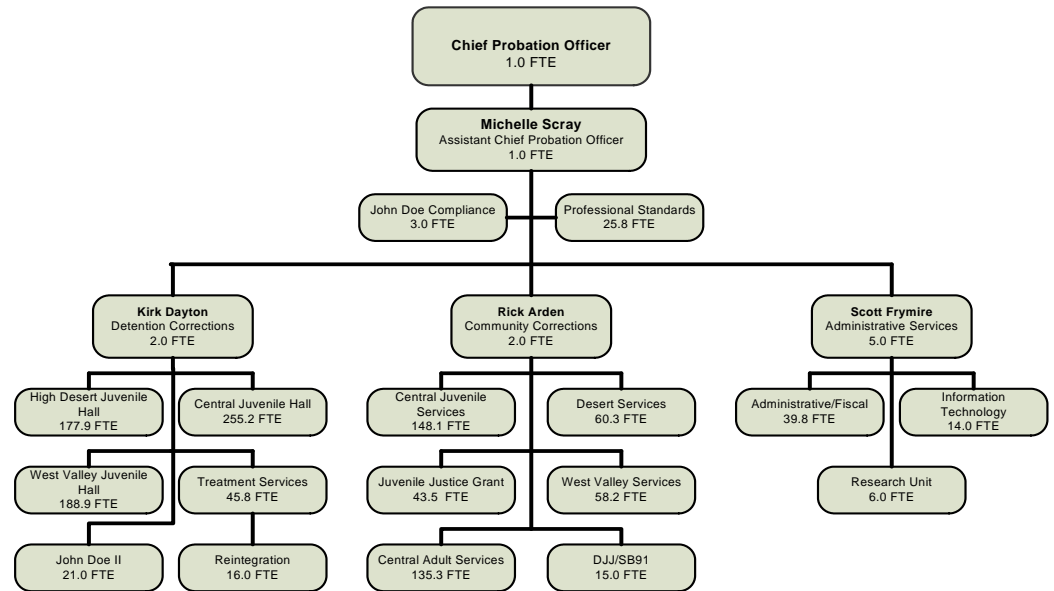
GOALS

ENSURE PUBLIC SAFETY

ENSURE TREATMENT AND SUPERVISION LEVELS ARE BASED ON CRIMINOGENIC RISK FACTORS

PROBATION

ORGANIZATIONAL CHART



DESCRIPTION OF MAJOR SERVICES

The Probation Department is dedicated to providing the highest level of professional service to the community, the courts, and to probationers. Major services include: adult and juvenile supervision, assessment, court reporting, delinquency prevention, and providing a secure environment for legally detained youth in three regional assessment and detention centers, and the Gateway at Regional Youth Educational Facility (RYEF) treatment center.

The department is organized into three bureaus: Administrative Services (ASB), Community Corrections (CCB), and Detention Corrections (DCB). ASB is responsible for overall management of the department, ensuring safe field services and institutions, providing leadership with integrity, and satisfaction of customers and staff.

CCB provides adult and juvenile case management supervision services, court reports, delinquency prevention, and assessment. The DCB operates the county's juvenile detention and assessment centers and protects the community by providing a safe and secure environment for legally detained youth. The centers assess, educate, and provide medical and other needs to the minors. Evidence-Based as well as promising practices guide the department's treatment and supervision procedures.

2008-09 SUMMARY OF BUDGET UNITS

| | Appropriation | Revenue | Local Cost | Fund Balance | Staffing |
|------------------------------------|--------------------|-------------------|-------------------|------------------|----------------|
| General Fund | | | | | |
| Admin, Corrections and Detention | 114,124,910 | 49,243,806 | 64,881,104 | | 1,221.3 |
| Court-Ordered Placements | 3,122,330 | - | 3,122,330 | | - |
| Total General Fund | 117,247,240 | 49,243,806 | 68,003,434 | | 1,221.3 |
| Special Revenue Funds | | | | | |
| Juvenile Justice Grant Program | 7,894,744 | 6,218,472 | | 1,676,272 | 43.5 |
| Asset Forfeiture 15% | 14,559 | 432 | | 14,127 | - |
| State Seized Assets | 59,303 | 1,800 | | 57,503 | - |
| Total Special Revenue Funds | 7,968,606 | 6,220,704 | | 1,747,902 | 43.5 |
| Total - All Funds | 125,215,846 | 55,464,510 | 68,003,434 | 1,747,902 | 1,264.8 |

GOALS, OBJECTIVES, AND PERFORMANCE MEASURES

GOAL 1: ENSURE PUBLIC SAFETY.

Objective A: Supervise adult probationers at an appropriate level in order to reduce recidivism.

Objective B: Supervise juvenile probationers at an appropriate level in order to reduce recidivism.

| MEASUREMENT | 2006-07 Actual | 2007-08 Actual | 2008-09 Target | 2008-09 Estimate | 2009-10 Target |
|---|----------------|----------------|----------------|------------------|----------------|
| 1A. Percentage of adult probationers recidivating.* (29,179 total adult probationers in 2007-08) | 4% | 3.8% | 5% | 3.7% | 3.6% |
| 1B. Percentage of juvenile probationers recidivating.* (9,782 total juvenile probationers in 2007-08) | 9.5% | 10% | 10% | 9.5% | 9.4% |

*Measurement has been reversed from 'not recidivating' to 'recidivating' to more accurately capture the true nature of the goal.

Status

The primary concern regarding probationers under San Bernardino County probation supervision is that they do not commit further criminal acts. Reducing new criminal acts in the community accomplishes the goal of protecting county residents. The department uses various methods of assessment and supervision to accomplish this goal. Methods include, but are not limited to the following:

- Enforce compliance of probationer terms of probation
- Home visits/searches
- Drug testing
- Surveillance
- Treatment for addictions
- Cognitive-behavioral restructuring classes for those with criminogenic thinking patterns
- Use of proven assessment tools such as the Correctional Offender Management Profiling for Alternative Sanctions (COMPAS) the Static 99 for sex offenders, and Spousal Assault Risk Assessment (SARA) for domestic violence offenders.
- Specialized caseloads to supervise high risk offenders, and
- Specialized caseloads to deal with mentally ill offenders.

Accomplishment of the 2009-10 targets will demonstrate that the work of the department is in line with and moving forward in its mission to protect the community with all incurred costs impacting this end. Reducing recidivism among supervised probationers shows the accomplishment of the workforce. All department work is aimed at keeping those under supervision from committing new criminal acts; resulting in community protection.

Recidivism is defined differently for adult and juvenile probationers. The definition of recidivism for adults on probation is a new felony conviction. The definition of recidivism for juveniles on probation is a sustained subsequent petition for either a felony or misdemeanor offense. Juvenile recidivism tends to be higher because the count includes both misdemeanors as well as felony re-offenses. For purposes of collecting this information, the Probation Department reports on known re-offenses committed by probationers in San Bernardino County.

In order to continually improve the department's ability to capture more data pertinent to measuring recidivism, it is improving its methods. The data collected during the 2008-09 fiscal year captures convictions occurring in San Bernardino County for all probationers placed on a caseload. In the future, the department expects to capture new convictions perpetrated by this population occurring outside of San Bernardino County as well. The resulting recidivism rate will most likely change as more data is measured.

2007-08 ACCOMPLISHMENTS

- ❖ Implementation of Gateway, funded by Senate Bill 81, provides specialized treatment and housing for serious juvenile offenders
- ❖ Improved recidivism tracking was achieved by allowing data to be broken down by region and criminogenic risk
- ❖ The new Research Unit enables the department to evaluate programs, manage statistical reporting, and begin research analysis projects



Gateway Program



4x6 Group Compliance



Juvenile Probation Officer

GOAL 2: ENSURE TREATMENT AND SUPERVISION LEVELS ARE BASED ON CRIMINOGENIC RISK FACTORS.

Objective A: Assess new adult probationers to determine expected risk of recidivating.

Objective B: Assess new juvenile probationers to determine expected risk of recidivating.

| MEASUREMENT | 2006-07 Actual | 2007-08 Actual | 2008-09 Target | 2008-09 Estimate | 2009-10 Target |
|---|-------------------|-------------------|-------------------|---------------------|-------------------|
| 2A. Percentage of new adult probationers assessed with risk instrument within 60 days. | 76% | 78.2% | 80% | 79.2% | 81% |
| 2B. Percentage of new juvenile probationers assessed with risk instrument within 60 days. | 60.3% | 91.9% | 93.0% | 94.5% | 96% |

Status

In order to ensure that offenders are supervised at proper levels, the department uses evidence-based assessment tools. The department uses three validated assessment tools: the Static 99 for sex offenders, the SARA for domestic violence offenders, and all remaining probationers are assessed using the COMPAS assessment tool. COMPAS assesses criminogenic risk factors for each offender. This information is then used to determine the proper supervisory level and treatment program for each offender, resulting in better utilization of resources, more effectively addressing offender specific problem areas that lead to recidivism, and identifying the appropriate supervision level for each offender.

The department utilizes a number of strategies to reduce recidivism once the assessment level is determined. These include: cognitive restructuring and Functional Family Therapy classes for juveniles; diversion programs for first time, low-risk juvenile offenders; specialized caseload units for sex offenders, domestic violence offenders, and mentally ill offenders; and specifically enhanced caseload units allowing for more intensive supervision of adult probationers assessed to be a high-risk to re-offend.

Accomplishment of the department's 2009-10 objectives will result in more effectively achieving the department's mission. Assessment instruments have been statistically proven to determine the likelihood of recidivism. Therefore, the use of these instruments has allowed the department to focus supervision services and other resources on those offenders most likely to re-offend. These efforts have been proven effective in allocating staffing to maximize efforts in reducing recidivism, which is the ultimate goal of the department. This results in better utilization of limited resources while effecting positive changes in offender behavior.

2009-10 REQUESTS FOR ADDITIONAL GENERAL FUND FINANCING

The department is not requesting any additional general fund financing for 2009-10.

2009-10 PROPOSED FEE ADJUSTMENTS

The department is not requesting any proposed fee adjustments for 2009-10.

If there are questions about this business plan, please contact Scott Frymire, Deputy Chief Probation Administrator, at (909) 387-5580.



THIS PAGE LEFT INTENTIONALLY BLANK