

TROPICAL DEPRESSION 13W

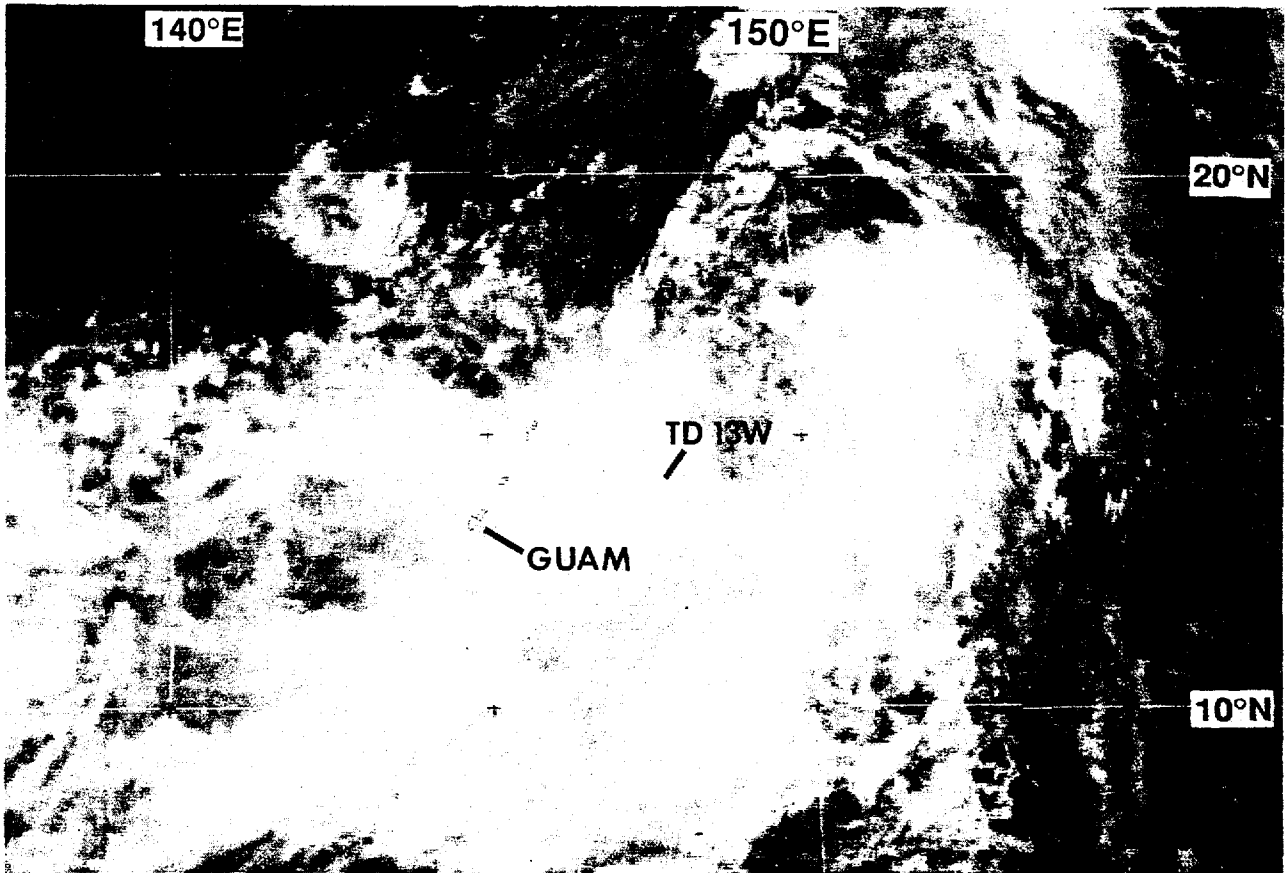


Figure 3-13-1 Tropical Depression 13W forms in the monsoon cloud band east of Guam (250424Z July visible GMS imagery).

Tropical Depression 13W, formed on 24 July, in association with a surge of the southwest monsoon across the Philippine Sea. Two Tropical Cyclone Formation Alerts were issued on the system: the first at 241051Z July, the second was at 242251Z after the disturbance center was relocated to the south. The first warning on Tropical Depression 13W was issued at 250600Z as the system passed about 40 nm (74 km) east of Saipan (WMO 91222) (Figure 3-13-1) while moving northward at 10-12 kt (19-22 km/hr) along the east side of a monsoon gyre. The depression was short-lived, however, as it dissipated less than a day later east of the northernmost of the Mariana Islands.