

Tropical Depression 09W

Tropical Depression (TD) 09W developed in the monsoon trough east of Hainan Island in the South China Sea on 13 September. TD 09W was a short-lived, minimum intensity tropical depression.

JTWC first mentioned this disturbance on 120600Z September on the Significant Tropical Weather Advisory (ABPW). JTWC issued the first warning on 130900Z September. TD 09W developed within the monsoon trough about 250nm east of Hainan Do, China. TD 09W, south of the subtropical ridge, tracked westward at 10-15 kt with the low-level steering flow. TD 09W reached a maximum intensity of 25 kt as it moved through the Hainan Strait Channel, into the Gulf of Tonkin. It made landfall and dissipated over Vietnam. JTWC issued three warnings. The final warning was issued at 132100Z September.

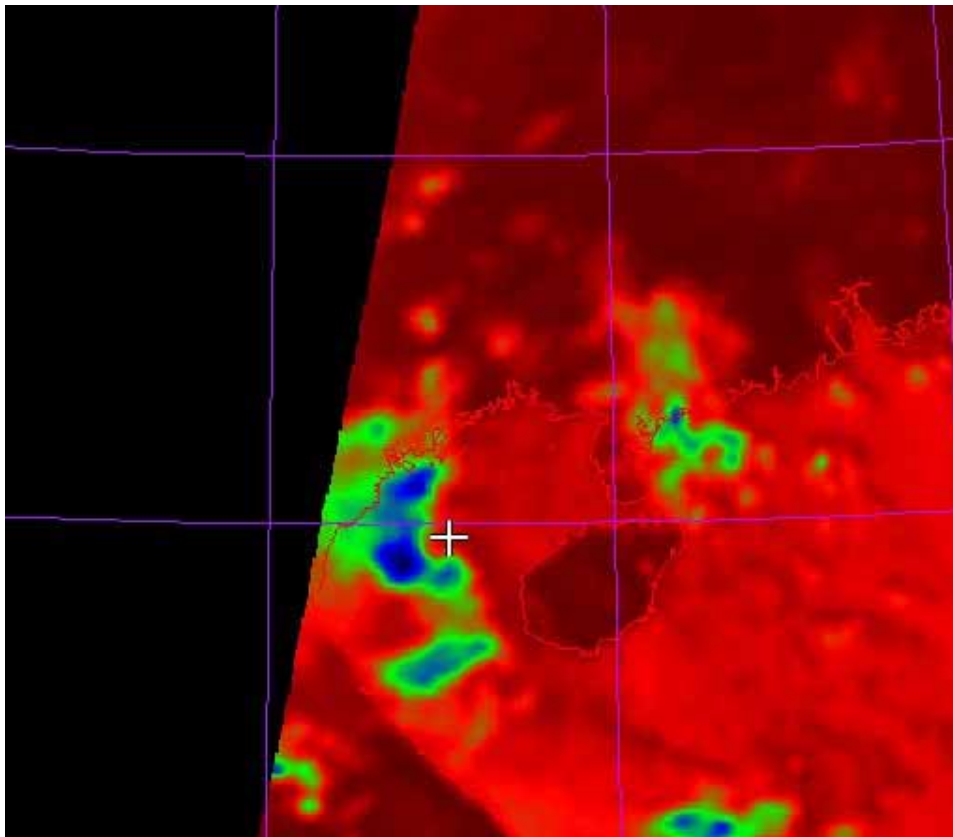


Figure 3-09-1. 132227Z September SSM/I pass. Convection is limited to west side of TD 09W. Low-level center is about 45 nm north of cursor location.

