

# Tropical Depression 16W

Tropical Depression 16W developed east of Taiwan, moved northeastward and then dissipated south of Okinawa in October.

This cyclone, which developed in a surface trough located over Taiwan and the Ryukyu Islands, was first mentioned in the Significant Tropical Weather Advisory on October 3rd as an area of persistent convection. JTWC issued a Tropical Cyclone Formation Alert at 041630Z October. The initial warning was issued at 050900Z as a 25 kt system located east of Taiwan.

TD 16W remained quasi-stationary in an area of weak steering flow for 36 hours and reached a peak intensity of 30 kt at 061200Z. A passing frontal boundary then moved the system east-northeastward. Vertical shear increased and by 070900Z, TD 16W was an exposed low-level circulation. JTWC issued the final warning at 072100Z October.

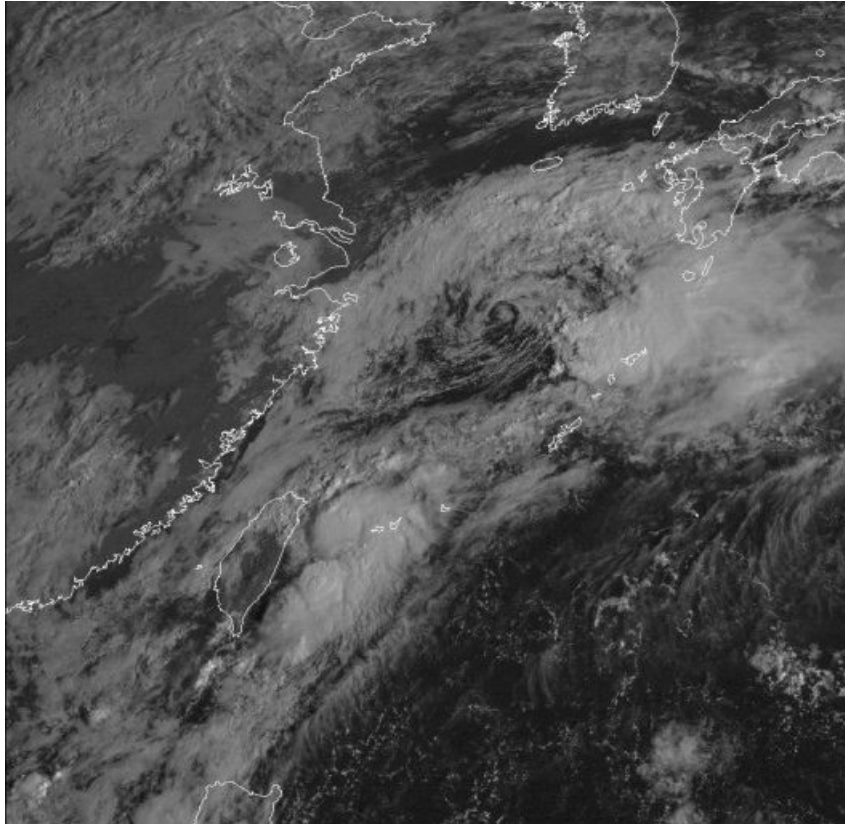


Figure 3-16-1. 052334Z October visual satellite image of TD 16W located east of Taiwan with maximum intensity of 25 kt. Also evident in this data is TD 17W as a completely exposed low level circulation in the East China Sea.

