

# Morwell National Park



## Visitor Guide

Situated in the northern foothills of the Strzelecki Ranges, this park is small in size but of great value in preserving a remnant of the area's original plant and animal life.

### How to get there

The park is situated 16km south of Morwell and is reached via Churchill or Yinnar (see map). It is a pleasant 2 hour drive from Melbourne.

### Facilities and accommodation

Picnic tables, gas barbeque, toilets and information are provided at the Kerry Road Picnic Area. Picnic tables are at Lyndons Clearing and Billys Creek.

Camping is not permitted. Accommodation is available in Churchill or Morwell.

### Things to see and do

The best way to enjoy Morwell National Park is to walk through it. Fosters Gully Nature Walk provides an excellent introduction to the natural features of the park and is an enjoyable walk for families. Nature walk leaflets are available at the start of the track.

Stringybark Ridge Track is another walk starting from Kerry Road Picnic Area and leads through a drier, ridge-top section of the park.

Interesting walks can also be found in the Billys Creek area of the park. The main track commences at a small car park on Junction Road where walking track information is available.

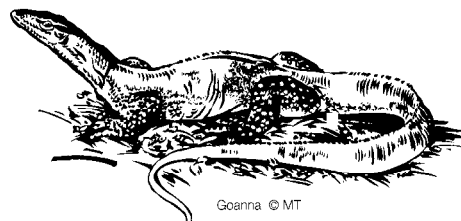
If walking does not appeal to you, Kerry Road Picnic Area is an ideal place to have a peaceful picnic in a quiet bushland setting. Fine views across the Latrobe Valley can be seen from the Jumbuk Road south of the Junction Road turnoff.

### Plants and wildlife

The vegetation varies from dry eucalypt forest in the west to heavily timbered fern gullies along the streams, lined with tall Mountain Grey Gums and Blackwood trees. Many species of orchids can be found, from the tiny Bird Orchids of autumn to the summer flowering Hyacinth Orchid, the largest ground orchid in Victoria. The rare Butterfly Orchid also occurs in the park.

Nearly 100 species of native birds have been identified so far. Yellow Robins, Grey Shrike-thrushes and Crimson Rosellas are often seen, and Superb Lyrebirds can be heard at times.

Koalas, wallabies, kangaroos, possums and many smaller mammals are common. Reptiles seen in the park include Black, Copperhead and Tiger snakes, and several lizard species including goanna.



Goanna © MT

### Park development

Originally declared in 1967, the park has grown over the years and now covers about 560 hectares. The most recent addition is the Billys Creek area to the east of the park. This area is being developed for passive recreation to help protect the original section of the park from overuse.

### Caring for the environment

- Dogs, cats, horses, trail bikes and firearms are not allowed in the park.
- Fires are not permitted.
- All native plants and animals are protected and must not be disturbed or removed.
- Take your rubbish home with you.
- Keep to the tracks at all times.

This area has been the home of native plants and animals for thousands of years. If we use the park in a quiet and sensitive way, they will continue to live in it and be enjoyed by us all!

*Please Note- school groups should make arrangements prior to visiting the park by phoning the Parks Victoria Information Centre on 13 1963.*



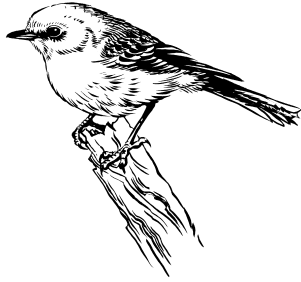
**For further information**

Parks Victoria  
 Information Centre  
**Call 13 1963**  
 or visit our website at  
**www.parkweb.vic.gov.au**

Parks Victoria Office  
 Hotham Street  
 Traralgon VIC 3844

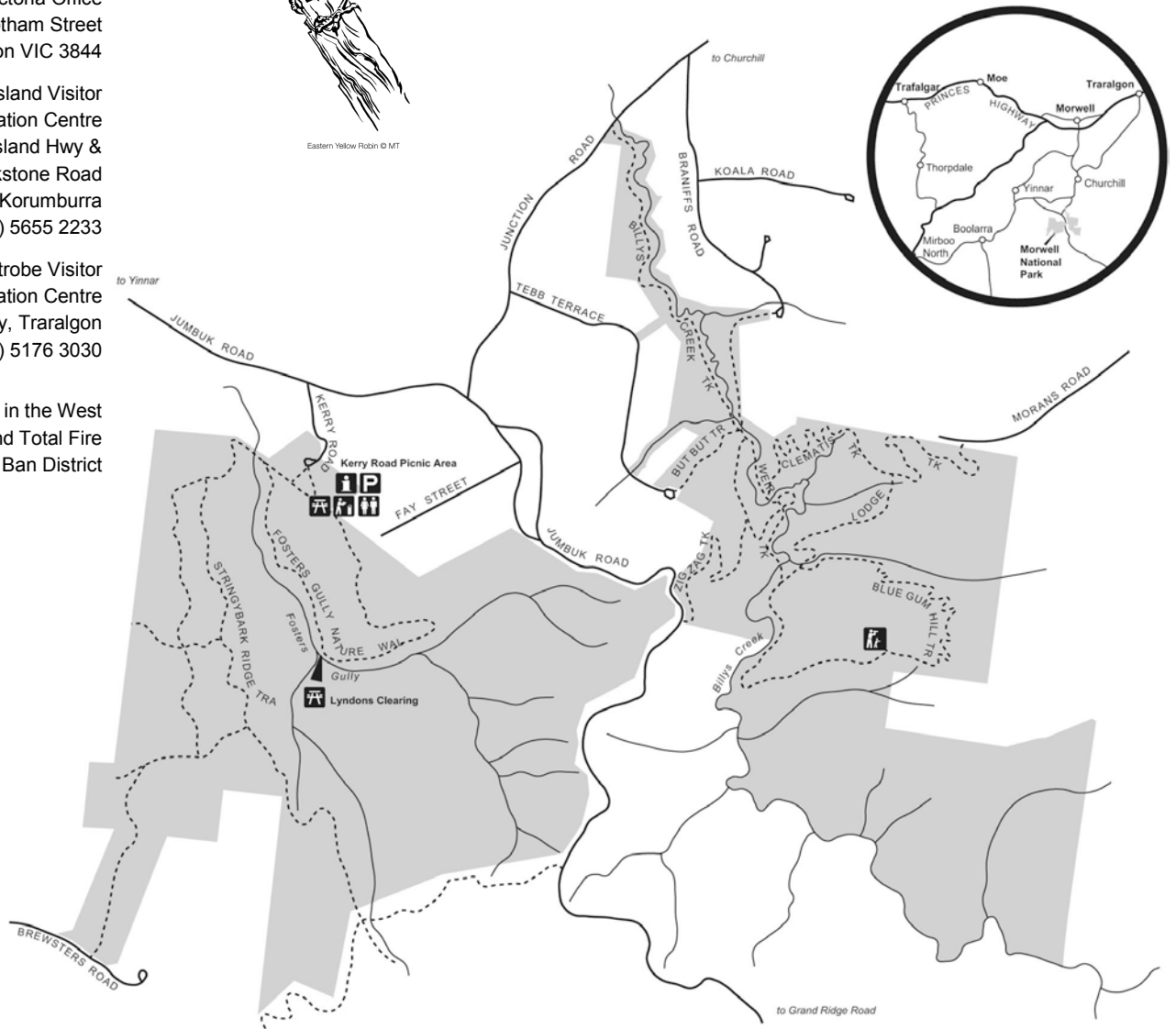
South Gippsland Visitor  
 Information Centre  
 Cnr South Gippsland Hwy &  
 Silkstone Road  
 Korumburra  
 Phone: (03) 5655 2233

Latrobe Visitor  
 Information Centre  
 Princes Hwy, Traralgon  
 Phone: (03) 5176 3030



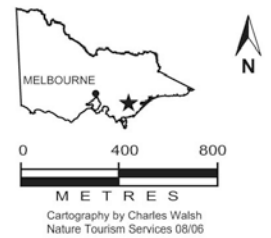
Eastern Yellow Robin © MT

This park is located in the West  
 & South Gippsland Total Fire  
 Ban District



**Morwell National Park**

- Morwell National Park
- Minor road
- Walking track
- Picnic area
- Toilets
- Information
- Parking
- Self guided walk
- Lookout



*Please don't throw this park  
 note away. Keep it, return it for  
 others to use, or recycle it*



Black-tailed wallaby © MT

**Healthy Parks Healthy People**

*Visiting a park can improve  
 your health, mind, body and  
 soul. So, with over four million  
 hectares of parkland available  
 to Victorians, why not escape  
 to a park today!*

November 2010  
 Printed on Australian-made 100% recycled paper



**Healthy Parks  
 Healthy People**

