

WARD PROFILES (Updated March 2011)

Mirfield

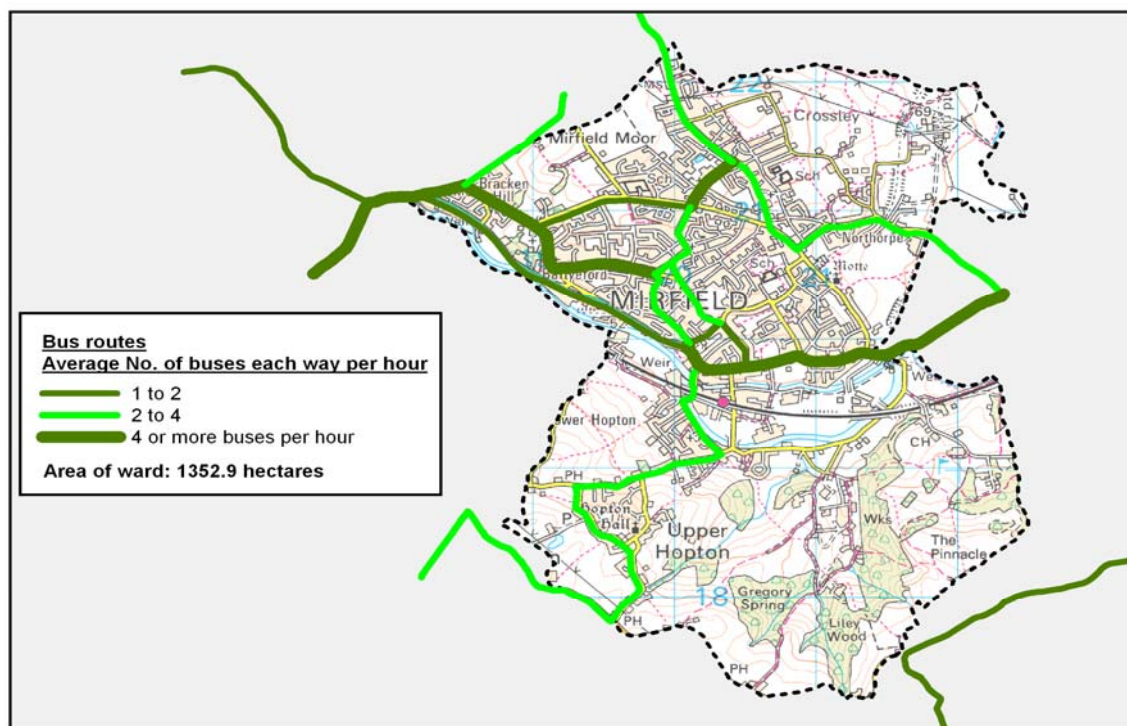
POPULATION (MID-YEAR ESTIMATE 2009)

	Mirfield		Kirklees ¹		Great Britain ¹	
	No.	%	No.	%	No.	%
Total population	18,653	100.0	406,750	100.0	60,003,100	100.0
Total males	9,037	48.4	199,787	49.1	29,495,400	49.2
Total females	9,616	51.6	206,963	50.9	30,507,700	50.8
All aged 0-4	983	5.3	27,714	6.8	3,656,100	6.1
All aged 5-15	2,307	12.4	55,672	13.7	7,510,800	12.5
All aged 16-19	910	4.9	21,969	5.4	3,110,700	5.2
All aged 20-44	5,350	28.7	139,392	34.3	20,634,800	34.4
All aged 45-64	5,472	29.3	102,061	25.1	15,239,500	25.4
All aged 65-74	1,998	10.7	31,965	7.9	5,139,200	8.6
All aged 75-84	1,165	6.2	20,089	4.9	3,371,600	5.6
All aged 85 and over	468	2.5	7,888	1.9	1,340,600	2.2

Source: 2010 Ward Population Estimates for England and Wales, mid-2009 (experimental statistics) Office for National Statistics © Crown Copyright 2011. Whilst the estimates are produced down to unit level, it is not implied that the estimates are accurate to this level of detail.

MAP OF WARD AND BUS ROUTES JANUARY 2010

BUS SERVICES OPERATING FROM 09:00 TO 18:00 MONDAY TO SATURDAY. SOURCE: W YORKS PTA



Ordnance Survey mapping has been used in this publication to show the boundaries of Electoral Wards.

© Crown Copyright. All rights reserved. Kirklees Council, Licence Number 100019241, 2010.

GROSS HOUSEHOLD INCOME 2009

	Mirfield	Kirklees	Great Britain
Gross income (mean)	£37,300	£33,500	£35,000

Source: CACI Paycheck Model 2009. Figures relate to total household income from any source including welfare benefits.

Chief Executive's Policy and Partnerships Unit
Telephone: 01484 221762 Fax: 01484 221755
Email: andy.shackleton@kirklees.gov.uk



WARD PROFILES (Updated March 2011)

Mirfield

ROAD TRAFFIC CASUALTIES JANUARY 2005 - DECEMBER 2009

Type of casualty	No.	Mirfield Average yearly rate per 1000 population	No.	Kirklees Average yearly rate per 1000 population	No. (2009 figures only)	Great Britain Rate per 1000 population
Fatal	1	0.0	71	0.0	2,222	0.0
Serious injury	35	0.4	931	0.5	24,684	0.4
Slight injury	190	2.0	8,351	4.1	195,194	3.3
Total casualties	226	2.4	9,353	4.6	222,100	3.7

Source: Kirklees Highways Service.

MOSAIC PUBLIC SECTOR 2009 - PROPERTIES

Group	No.	Mirfield %	No.	Kirklees %	UK %
A Residents of isolated rural communities	30	0.4	1,565	0.9	4.4
B Residents of small and mid-sized towns with strong local roots	1,793	21.1	16,727	9.4	8.7
C Wealthy people living in the most sought after neighbourhoods	99	1.2	1,548	0.9	3.1
D Successful professionals living in suburban or semi-rural homes	1,057	12.5	15,696	8.8	8.2
E Middle income families living in moderate suburban semis	1,312	15.5	21,926	12.3	10.7
F Couples with young children in comfortable modern housing	537	6.3	11,586	6.5	5.6
G Young, well-educated city dwellers	8	0.1	4,803	2.7	8.9
H Couples and young singles in small modern starter homes	430	5.1	9,221	5.2	4.9
I Lower income workers in urban terraces in often diverse areas	255	3.0	29,142	16.3	7.5
J Owner occupiers in older-style housing in ex-industrial areas	1,191	14.0	19,549	10.9	7.7
K Residents with sufficient incomes in right-to-buy social housing	594	7.0	14,783	8.3	9.0
L Active elderly people living in pleasant retirement locations	408	4.8	4,259	2.4	4.5
M Elderly people reliant on state support	611	7.2	11,589	6.5	5.7
N Young people renting flats in high density social housing	19	0.2	4,553	2.5	5.6
O Families in low-rise social housing with high levels of benefit need	142	1.7	11,606	6.5	5.5
Unclassified	0	0.0	156	0.1	0.0
Total	8,486	100.0	178,709	100.0	100.0

Source: Experian UK Ltd. Public sector Mosaic is a population profiling tool that aggregates the population into groups. Each group has common characteristics in terms of lifestyle.

STANDARDISED MORTALITY RATIOS (SMR) 2007 - 2009

	Mirfield	Kirklees	England and Wales
All causes	109	112	100

Source: ONS VS4 (registrations), 2008 Mid-Year Estimates.

RECORDED CRIME (OFFENCES) 2009/2010

	No.	Mirfield Rate ¹	No.	Kirklees Rate ¹	No.	England and Wales Rate ¹
Burglary dwelling	140	7.5	3,598	8.8	268,595	4.9
Burglary other	124	6.6	2,785	6.8	272,060	5.0
Criminal damage	324	17.4	7,105	17.5	806,720	14.7
Drugs offences	25	1.3	1,733	4.3	234,998	4.3
Fraud/Forgery	39	2.1	1,151	2.8	152,348	2.8
Handling	2	0.1	81	0.2	9,425	0.2
Homicide	1	0.1	10	0.0	615	0.0
Others	23	1.2	594	1.5	70,102	1.3
Other theft	176	9.4	7,102	17.5	1,028,056	18.8
Other violence	130	7.0	5,025	12.4	871,097	15.9
Robbery	13	0.7	499	1.2	75,101	1.4
Sexual offences	9	0.5	347	0.9	54,509	1.0
Theft from vehicle	89	4.8	3,183	7.8	339,140	6.2
Theft etc of vehicle	32	1.7	1,056	2.6	155,838	2.8
Total No. of Offences	1,127	60.4	34,269	84.3	4,338,604	79.2

Source: West Yorkshire Police. ¹Rate per 1000 population.

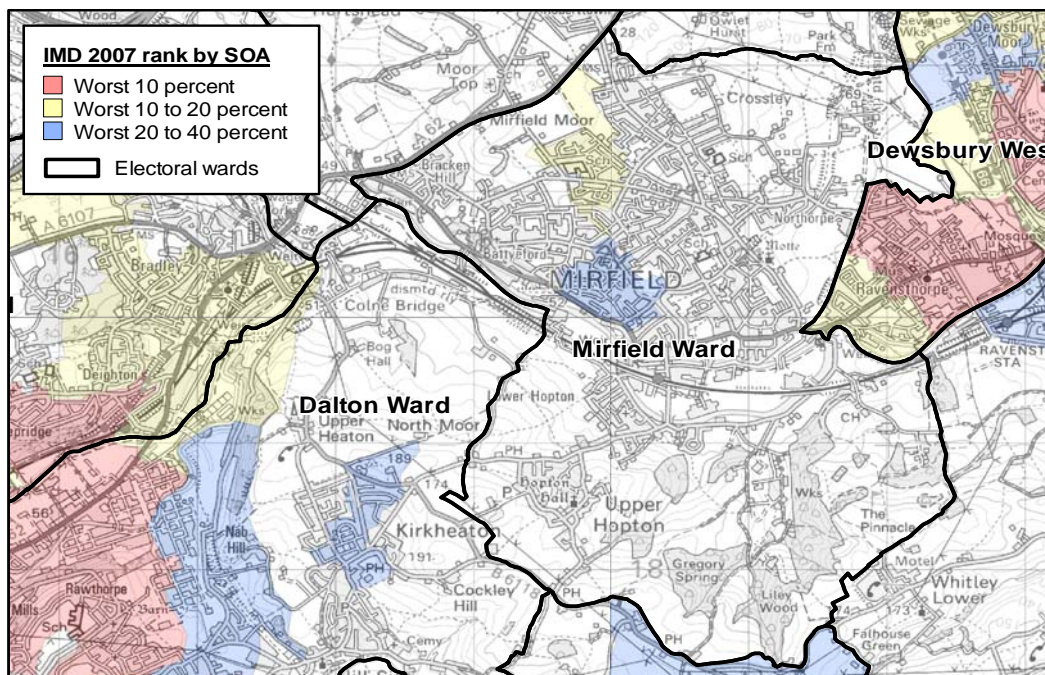
Chief Executive's Policy and Partnerships Unit
 Telephone: 01484 221762 Fax: 01484 221755
 Email: andy.shackleton@kirklees.gov.uk



WARD PROFILES (Updated March 2011)

Mirfield

INDEX OF DEPRIVATION 2007 (DCLG) - COMBINED INDEX (RANK)



Ordnance Survey mapping has been used in this publication to show the boundaries of ONS Super Output Areas Level 1.
 © Crown Copyright. All rights reserved. Kirklees Council, Licence Number 100019241, 2010

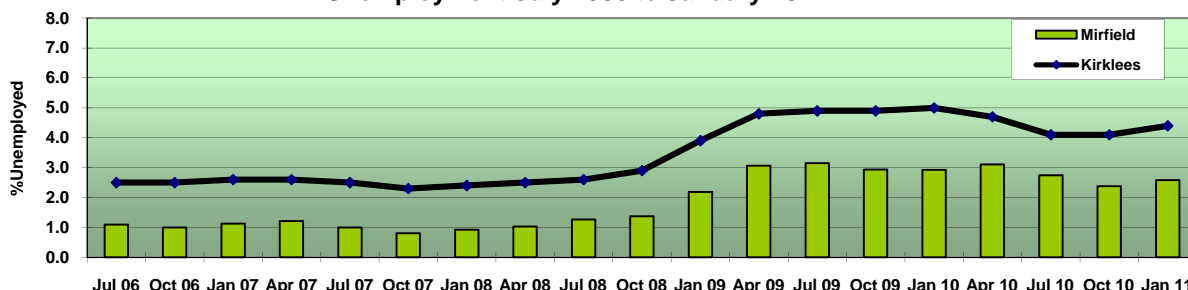
The Combined Index produced by the Department for Communities and Local Government is created using seven domains with the following weightings: Income (22.5% weighting), Employment (22.5%), Health Deprivation and Disability (13.5%), Education Skills and Training (13.5%), Barriers to Services (9.3%), Crime (9.3%), and Living Environment (9.3%). The above map shows those Level 1 Super Output Areas (SOAs) which rank within the worst 10%, 20% and 40% deprived SOAs in England. There are 32,482 Level 1 SOAs in England.

UNEMPLOYMENT JANUARY 2011 (CLAIMANT COUNT)

	Mirfield		Kirklees		Great Britain	
	No.	%	No.	%	No.	%
Total (working age rates)¹	306	2.6	11,427	4.4	1,445,379	3.7
Males	230	3.9	7,997	6.2	1,006,195	5.2
Females	76	1.3	3,430	2.6	439,184	2.3

Source: ONS. ¹No official unemployment rates are available for Wards. The rates shown here are calculated by Kirklees Economic Development Service. They are calculated on the same basis as rates for larger areas and show the number of people claiming Jobseekers' Allowance as a percentage of the resident population aged 16 to 64 of each Ward as at the relevant ONS Mid-Year Estimate.

Unemployment July 2006 to January 2011



Chief Executive's Policy and Partnerships Unit
 Telephone: 01484 221762 Fax: 01484 221755
 Email: andy.shackleton@kirklees.gov.uk



WARD PROFILES (Updated March 2011)

Mirfield

MAJOR EMPLOYERS FEBRUARY 2011 (EXCLUDING LOCAL AUTHORITY)

Name of company	Nature of business	No. of employees
John Cotton Mirfield Limited	Manufacture of mattress fillings	550
Camira Fabrics	Manufacture of furniture textiles	300
Holly Bank Trust	Children's Hospice	206

Source: Regeneration & Economic Development Service.

EMPLOYMENT BY SECTOR DECEMBER 2009

Type of industry	Mirfield		Kirklees		Great Britain	
	No.	%	No.	%	No.	%
Construction/Primary Production	204	5	7,325	5	1,786,869	7
Manufacturing	893	22	25,526	17	2,358,386	9
Services	2,972	73	115,757	78	22,060,846	84
All Industries & Services	4,069	100	148,608	100	26,206,101	100

Source: ONS Business Register and Employment Survey 2009. NB: Figures shown are for people employed in the ward, (not an employment profile of residents of the ward). Totals may not sum due to rounding. All Industries are classified using SIC 2007.

COUNCIL TAX JULY 2010

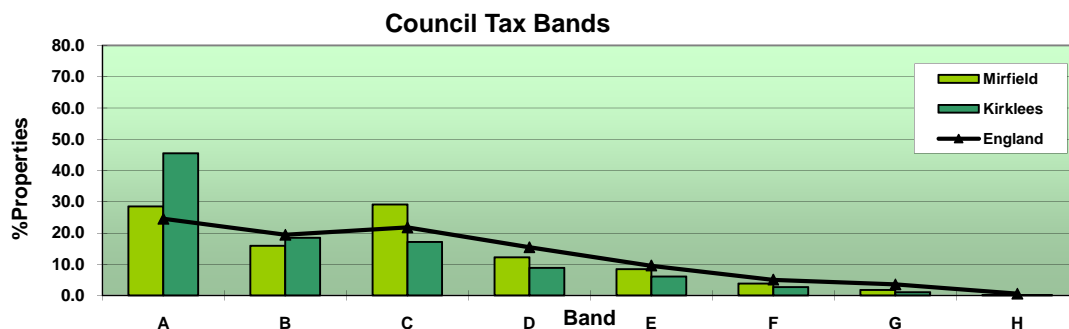
	Mirfield		Kirklees	
	No.	%	No.	%
Total properties	8,628	100.0	178,198	100.0
Liabie properties ¹	8,224	95.3	166,780	93.6
Properties claiming some or 100% benefit ²	1,443	17.5	41,861	25.1
Void (empty) properties	345	4.0	8,277	4.6

Source: Kirklees Revenues and Benefits Service (Council Tax Section).¹Liabie properties equals total properties less exempt and void properties.²Percentage in this row is a % of liabie properties.

COUNCIL TAX BANDS JULY 2010

	Mirfield		Kirklees		England	
	No.	%	No.	%	No.	%
Band A (£40,000 and under)	2,458	28.5	81,163	45.5	5,400,084	24.6
Band B (£40,001 - £52,000)	1,377	16.0	32,973	18.5	4,276,171	19.5
Band C (£52,001 - £68,000)	2,514	29.1	30,570	17.2	4,792,151	21.8
Band D (£68,001 - £88,000)	1,059	12.3	15,698	8.8	3,389,003	15.4
Band E (£88,001 - £120,000)	727	8.4	10,924	6.1	2,101,895	9.6
Band F (£120,001 - £160,000)	331	3.8	4,778	2.7	1,112,152	5.1
Band G (£160,001 - £320,000)	150	1.7	1,961	1.1	784,495	3.6
Band H (£320,001 and over)	12	0.1	131	0.1	123,186	0.6
Total	8,628	100.0	178,198	100.0	21,979,137	100.0

Source: Kirklees Revenues and Benefits Service (Council Tax Section).



Chief Executive's Policy and Partnerships Unit
 Telephone: 01484 221762 Fax: 01484 221755
 Email: andy.shackleton@kirklees.gov.uk



WARD PROFILES (Updated March 2011)

Mirfield

WELFARE BENEFITS

	No.	Mirfield %	No.	Kirklees %	No.	Great Britain %
Income Support Claimants by Statistical Group, May 2010						
All claimants ¹	330	3.0	12,675	5.0	1,852,215	5.0
Incapacity benefit ³	185	56.1	6,710	52.9	998,220	53.9
Lone parent ³	130	39.4	4,700	37.1	678,805	36.6
Carers and others ³	15	4.5	1,265	10.0	175,190	9.5

Pension Credit, May 2010

All claimants ²	855	18.7	18,815	26.0	2,734,300	24.0
Guarantee Element Only ³	210	24.6	6,455	34.3	954,630	34.9
Saving Element Only ³	215	25.1	4,265	22.7	577,110	21.1
Guarantee Credit and Saving Credit ³	430	50.3	8,095	43.0	1,202,560	44.0

Incapacity Benefit Claimants, May 2010

All claimants (aged 16 and over) ¹	440	4.0	12,700	5.1	1,883,700	5.1
---	-----	-----	--------	-----	-----------	-----

Severe Disability Allowance Claimants, May 2010

All claimants (aged 16 and over) ⁴	65	0.4	1,475	0.5	232,670	0.5
---	----	-----	-------	-----	---------	-----

Attendance Allowance Claimants, May 2010

All claimants (aged 65 and over) ²	585	12.8	10,135	14.0	1,783,930	15.7
---	-----	------	--------	------	-----------	------

Disability Living Allowance Claimants, May 2010

All claimants all ages ⁵	985	5.3	23,030	5.7	3,181,415	5.3
-------------------------------------	-----	-----	--------	-----	-----------	-----

Child Benefit August 2009

Total children in receipt of benefit	3,835		97,275		13,088,240	
Total families with children in receipt of benefit	2,265	100.0	54,370	100.0	7,485,730	100.0
Families with 1 child ⁶	1,050	46.4	24,810	45.6	3,479,420	46.5
Families with 2 children ⁶	950	41.9	20,075	36.9	2,833,335	37.8
Families with 3 or more children ⁶	270	11.9	9,485	17.4	1,172,975	15.7

Working Tax (WTC)/Child Tax Credit (CTC) Families, Out of Work Families, August 2008

Receiving both CTC and WTC ⁶	520	22.9	16,350	30.7	1,744,700	23.8
Receiving CTC above family element ⁶	225	9.9	4,920	9.2	669,500	9.1
Receiving CTC family element and below ⁶	750	33.0	12,215	23.0	1,756,400	24.0
Out of work families ⁶	225	9.9	9,495	17.8	1,345,300	18.4
Lone parent families ⁶	575	25.3	15,165	28.5	2,143,300	29.3

Note: Out of work families and families receiving both CTC and WTC represent the lowest income families.

Working Age (16 to 60/64) Claimants by Statistical Group, May 2010

Total ¹	1,375	12.6	41,310	16.4	5,730,850	15.4
Job Seeker ¹	325	3.0	10,510	4.2	1,354,080	3.6
Employment and Support Allowance, Incapacity or Severe Disability Allowance Benefits ¹	620	5.7	17,710	7.1	2,602,655	7.0
Lone Parent ¹	125	1.1	4,700	1.9	678,720	1.8
Carer ¹	120	1.1	3,460	1.4	430,115	1.2
Others on Income Related Benefit ¹	45	0.4	1,350	0.5	192,665	0.5
Disabled ¹	115	1.1	3,020	1.2	390,065	1.1
Bereaved ¹	25	0.2	560	0.2	82,550	0.2

The Working Age Claimants shown above are arranged hierarchically and claimants are assigned to the highest statistical group that they belong to (Job Seeker highest, Bereaved lowest). Thus a person who claims Income Support as a Lone Parent and also receives Incapacity Benefit would be classified into 'incapacity benefits' group. This ensures that a person is not counted twice.

Notes: ¹Percentage of all aged 16 to 59/64. ²Percentage of all claiming state pension. ³Percentage of all claimants. ⁴Percentage of all aged 16 and over. ⁵Percentage of population all ages. ⁶Percentage of all families with children in receipt of child benefit. Ward figures are compiled from a 'best fit' of whole Super Output Areas.

Source: DWP Information Directorate, HM Revenue and Customs.

Chief Executive's Policy and Partnerships Unit

Telephone: 01484 221762 Fax: 01484 221755

Email: andy.shackleton@kirklees.gov.uk



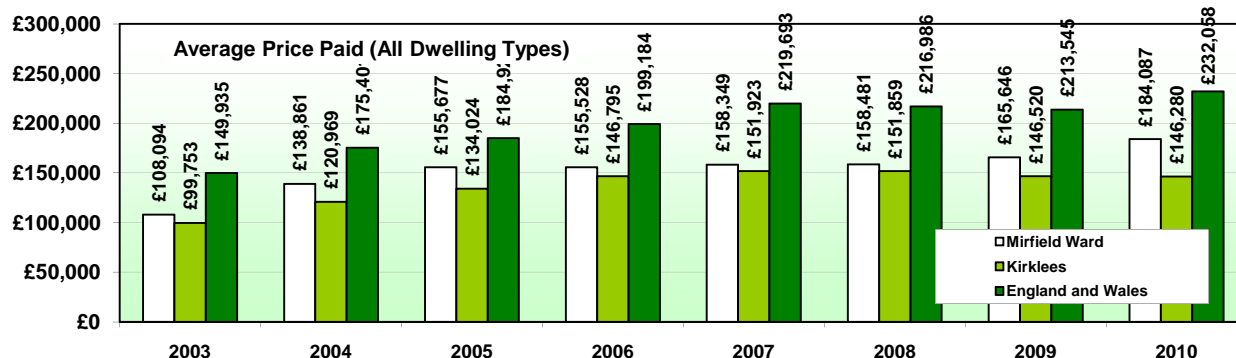
WARD PROFILES (Updated March 2011)

Mirfield

AVERAGE HOUSE PRICES JANUARY TO JUNE 2010

Type of premises	Mirfield		Kirklees		England and Wales	
	£	Sales	£	Sales	£	Sales
Detached	£255,730	32	£245,541	378	£333,411	69,737
Semi-detached	£155,757	27	£139,482	577	£200,497	82,096
Terraced	£129,638	18	£107,833	720	£189,154	85,549
Flat/maisonette	£92,825	6	£103,462	130	£217,959	57,204
All	£184,087	83	£146,312	1,807	£232,058	294,586

Source: HM Land Registry © Crown Copyright. Reproduced with the permission of HM Land Registry on behalf of the Controller of Her Majesty's Stationery Office.



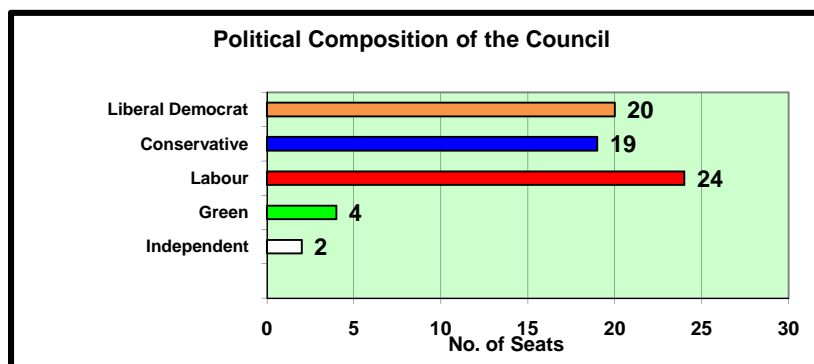
GCSE RESULTS 2005 TO 2010

School	2005	2006	2007	2008	2009	2010
	5 A*-C	5 A*-C	5 A*-C	5 A*-C	5 A*-C	5 A*-C
Castle Hall School	63%	57%	68%	66%	81%	76%
The Mirfield Free Grammar and Sixth Form	54%	56%	72%	78%	81%	87%
Kirklees LEA	51%	53%	56%	62%	65%	73%
England average	57%	59%	62%	65%	70%	75%

Source: Department for Children, Schools and Families. Percentages shown above are % of 15 year-olds who gained five or more GCSEs at grades A* to C.

YOUR COUNCILLORS

Councillor	Party	Telephone	Overall Turnout: 71.35%
Martyn Bolt	Conservative	(01924) 496129	
Kath Taylor	Conservative	(01924) 496824	
Vivien Lees-Hamilton	Conservative	(01924) 480082	



Chief Executive's Policy and Partnerships Unit
 Telephone: 01484 221762 Fax: 01484 221755
 Email: andy.shackleton@kirklees.gov.uk

