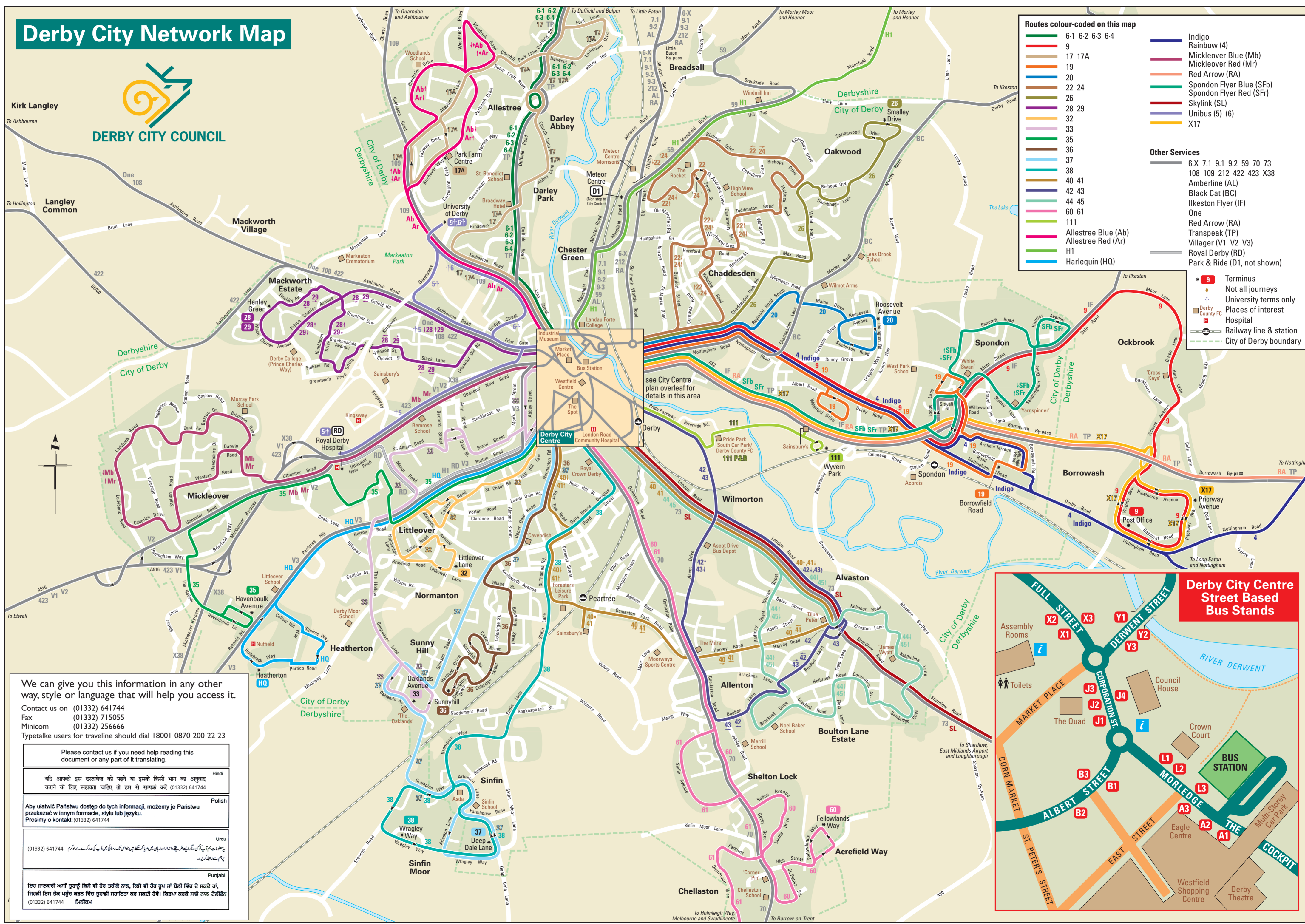


Derby City Council
Bus Network Guide

March 2010 www.derby.gov.uk

Improved Evening and Sunday services on many routes



Derby City Council is spending over £6 million this year supporting public transport services. This is used amongst other things to:

- provide concessionary fares passes for disabled people, elderly and young residents
- support conventional bus services which are not commercially viable but for which there is a social need
- provide school transport
- support the Dial a Bus and Health Service Ring and Ride bus services operated by Derby Community Transport

For more information call **01332 641744**
 Travelling by bus, rail or coach in the Derby area?
 The following useful contacts will help you.

Local bus services

traveline
 public transport info
 0871 200 22 33
www.traveline.info

Local bus times
 7am - 9pm
 every day

Typetalke users for traveline should dial **1800 0870 200 22 33**

Derby Community Transport
 For enquiries please call (01332) 380738

Rail services

National Rail Enquiries
 08457 48 49 50 (24 hours) for times and fares.
 minicom 0845 6050600
www.nationalrail.co.uk for live departure boards

national express
 08705 80 80 80 for bookings and general enquiries.
 (0121) 423 8479 Disabled Persons' Travel Helpline.
 (0121) 455 0086 Textphone for people with hearing difficulties.
www.nationalexpress.com

On-line
www.derby.gov.uk
 Derby City Council's public transport pages provides comprehensive bus and rail information.

Subsidised Travel provided by Derby City Council

The authority, along with the eight local district councils of Derbyshire, provides subsidised travel for **elderly and disabled residents**. Residents over the age of 60, and some disabled people can have a **National Concessionary Travel Card**, giving free travel on most off peak buses throughout England. Derby and Derbyshire residents also receive 1/2 price rail travel throughout the country and free dial-a-bus travel on Community Transport Services as well as discounts at hundreds of local shops and services. To apply for National Concessionary Travel Card, phone (01332) 641772.

Typetalke users should dial **18001** before this number

Cut-price travel for young people is also available under the **b_line** scheme. **b_line** card holders, aged 14 to 18, can get half fare on public transport on most services throughout the country. **b_line** cards are for 11 to 14 year-olds, and while they cannot be used to get half fare travel, the card is proof of age for a child fare. Both **b_line** cards can be used to get discounts at around 500 businesses county-wide, including at some local leisure and tourist attractions. These cards are available from most schools.

We can give you this information in any other way, style or language that will help you access it.

Contact us on (01332) 641744
 Fax (01332) 715055
 Minicom (01332) 256666

Typetalke users for traveline should dial 18001 0870 200 22 23

Please contact us if you need help reading this document or any part of it translating.
हिंदी यदि आपको इस दस्तावेज़ को पढ़ने या इसके किसी भाग का अनुवाद करने के लिए सहायता चाहिए तो हम से सम्पर्क करें (01332) 641744
Polski Aby ułatwić Państwu dostęp do tych informacji, możemy je Państwu przekazać w innym formacie, stylu lub języku. Prosimy o kontakt. (01332) 641744
Urdu یہ معلومات آپ کو کسی دیگر زبان میں بھیج سکتے ہیں۔ اگر آپ کو اس سہولت کی ضرورت ہے تو براہ کرم (01332) 641744 پر رابطہ کریں۔
Punjabi ਇਹ ਜਾਣਕਾਰੀ ਅਸੀਂ ਤੁਹਾਨੂੰ ਕਿਸੇ ਵੀ ਹੋਰ ਢੰਗ ਨਾਲ, ਕਿਸੇ ਵੀ ਹੋਰ ਰੂਪ ਜਾਂ ਭੇਜੀ ਵਿੱਚ ਦੇ ਸਕਦੇ ਹਾਂ, ਜਿਹੜੀ ਇਸ ਤੋਂ ਪਹਿਲਾਂ ਹੋਰ ਵਿੱਚ ਤੁਹਾਡੀ ਸਹਾਇਤਾ ਕਰ ਸਕਦੀ ਹੈ। ਕਿਰਪਾ ਕਰਕੇ ਸਾਡੇ ਨਾਲ ਟੈਲੀਫੋਨ (01332) 641744 'ਤੇ ਸੰਪਰਕ ਕਰੋ।