



Australian Government

Department of Infrastructure and Transport

Bureau of Infrastructure, Transport and Regional Economics

STATISTICAL REPORT



Aviation

Domestic airline activity
September 2010

© Commonwealth of Australia 2010

ISSN 1832-1968

Released November 2010

This work is copyright and the data contained in this publication should not be reproduced or used in any form without acknowledgement.

Enquiries:

Nebojsa Pavlovic

Bureau of Infrastructure, Transport and Regional Economics

GPO Box 501

Canberra ACT 2601

Telephone: 02 6274 6817

Facsimile: 02 6274 7727

Website: www.bitre.gov.au

Email: avstats@infrastructure.gov.au

Nebojsa.Pavlovic@infrastructure.gov.au

This publication can be downloaded from the BITRE website. A spreadsheet format of the time-series data is also available at:

<http://www.bitre.gov.au/info.aspx?ResourceId=225&NodeId=101>

Disclaimers

BITRE seeks to publish its work to the highest professional standards. However, it cannot accept responsibility for any consequences arising from the use of information herein. Readers should rely on their own skill and judgment in applying any information or analysis to particular issues or circumstances.

FOREWORD

This report provides an overview of domestic (including regional) airline activity in Australia for the month of September 2010.

The data covers revenue passengers carried by Australian-registered operators of scheduled regular public transport services over Australian flight stages, including passengers carried between domestic airports on international flights operated by these carriers. The passengers carried refer to traffic on board by stages. These statistics may not match the passenger numbers shown in other spreadsheets available for download from the BITRE web site where passengers carried between domestic airports on international flights are excluded.

Charter aircraft flights are not included in these statistics.

Individual routes shown are restricted to those with an average exceeding 8 000 passengers per month where two or more airlines operate in competition. For the month of September 2010 there were 55 such routes compared to 54 published in August 2010. The Ayers Rock – Sydney route now qualifies for inclusion after Virgin commenced services during August 2010.

Information on the total network for the year ending September 2010 is presented on page 2, with the month of September presented on page 3.

Detailed information on the 55 individual routes can be found in the summary pages 4–9 of this publication. The top ten airport passenger movements are shown on page 10 and long-term trends for the top ten competitive routes are presented graphically on pages 11–20. A list of definitions can be found on page 21.

The report was prepared by the Aviation Statistics Section of the Bureau of Infrastructure, Transport and Regional Economics with data provided by airlines.

Estimates are included where data is not available and data presented in this publication may contain revisions to previously published data.

Where figures have been rounded, discrepancies may occur between sums of component items and totals, and in percentage changes which are derived from figures prior to rounding.

This page is intentionally left blank.

CONTENTS

Highlights	1
Total network	2
Top competitive routes	4
Top ten airports	10
Top ten routes	11
1. Melbourne – Sydney	11
2. Brisbane – Sydney	12
3. Brisbane – Melbourne	13
4. Gold Coast – Sydney	14
5. Adelaide – Melbourne	15
6. Gold Coast – Melbourne	16
7. Adelaide – Sydney	17
8. Melbourne – Perth	18
9. Perth – Sydney	19
10. Brisbane – Cairns	20
Definitions	21

This page is intentionally left blank.

HIGHLIGHTS

There were 4.69 million passengers carried on Australian domestic airlines (including regional operations) in September 2010, an increase of 8.0 per cent on September 2009 passenger numbers. The number of passengers carried in the year ending September 2010 was 52.79 million, an increase of 4.9 per cent on the year ending September 2009.

Revenue passenger kilometres (RPKs) performed were 5.44 billion for the month, up 8.6 per cent compared with September 2009. Capacity, measured by available seat kilometres (ASKs), increased 10.3 per cent compared with September 2009 to a total of 6.72 billion.

With capacity increasing at a faster rate than passenger traffic, the industry wide load factor (RPKs/ASKs) decreased from 82.3 per cent in September 2009 to 81.0 per cent in September 2010. Seat utilisation on individual routes decreased on 33 of the 53 routes for which data is available in both years.

The number of aircraft trips increased 5.4 per cent, from 46 474 in September 2009 to 49 002 in September 2010.

For the month of September 2010, Melbourne – Sydney remained Australia's busiest route with 660 203 passengers, an increase of 7.9 per cent compared with September 2009. It was followed by Brisbane – Sydney with 375 993 passengers (up 2.0 per cent) and Brisbane – Melbourne with 284 386 passengers (up 13.4 per cent).

The greatest percentage increase in air traffic, compared to September 2009, was on the Gold Coast – Newcastle route (up 48.1 per cent). There were large increases on a number of other routes, including Perth – Port Hedland (up 27.1 per cent), Cairns – Melbourne (up 25.3 per cent), Adelaide – Brisbane (up 20.9 per cent) and Brisbane – Mackay (up 19.4 per cent) and.

Routes with traffic decreases in September 2010 compared with September 2009, included Adelaide – Canberra (down 19.9 per cent), Adelaide – Perth (down 10.5 per cent), Brisbane – Hamilton Island (down 8.1 per cent) and Adelaide – Gold Coast (down 6.5 per cent).

In September 2010, Sydney remained Australia's busiest domestic airport with 2.08 million passenger movements, followed by Melbourne with 1.89 million passenger movements and Brisbane with 1.38 million passenger movements.

TOTAL NETWORK

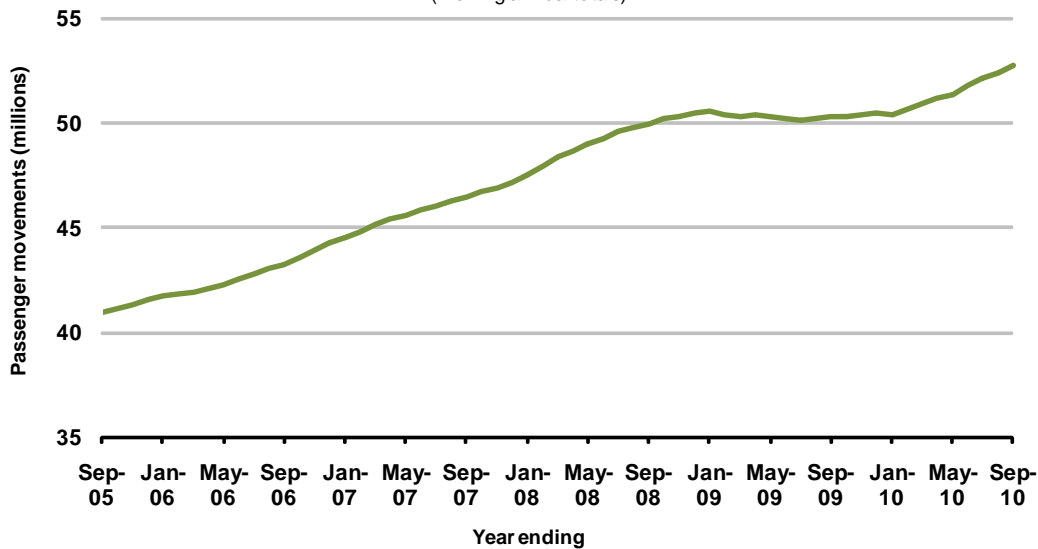
Summary of annual activity

	YE Sep 2009	YE Sep 2010	% Change
Total passengers carried (millions)	50.30	52.79	4.9
Revenue passenger kilometres (billions)	57.65	60.26	4.5
Available seats (millions)	65.09	68.03	4.5
Available seat kilometres (billions)	72.83	75.99	4.3
Load factor %	79.2	79.3	0.1 *
Aircraft trips (000s)	550.6	573.0	4.1

* percentage point difference

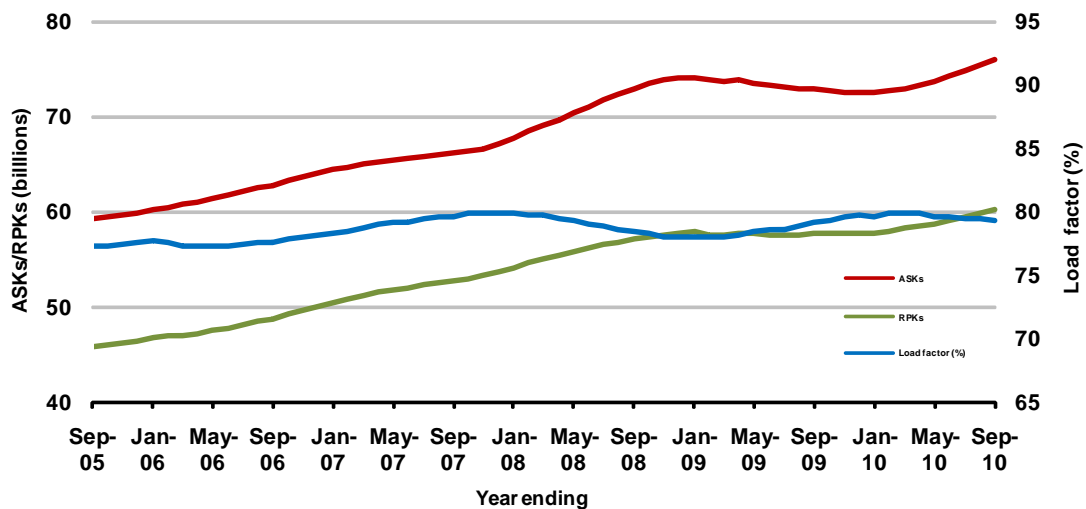
Domestic passenger traffic

(moving annual totals)



Network utilisation

(moving annual totals)



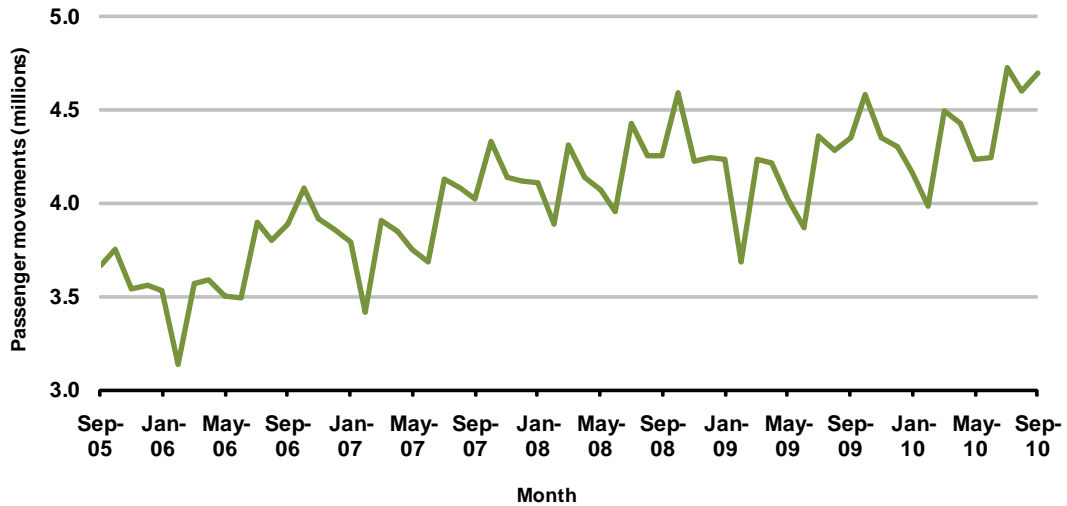
Summary of monthly activity

	Sep 2009	Sep 2010	% Change
Total passengers carried (millions)	4.35	4.69	8.0
Revenue passenger kilometres (billions)	5.01	5.44	8.6
Available seats (millions)	5.42	5.88	8.4
Available seat kilometres (billions)	6.09	6.72	10.3
Load factor %	82.3	81.0	-1.3 *
Aircraft trips (000s)	46.5	49.0	5.4

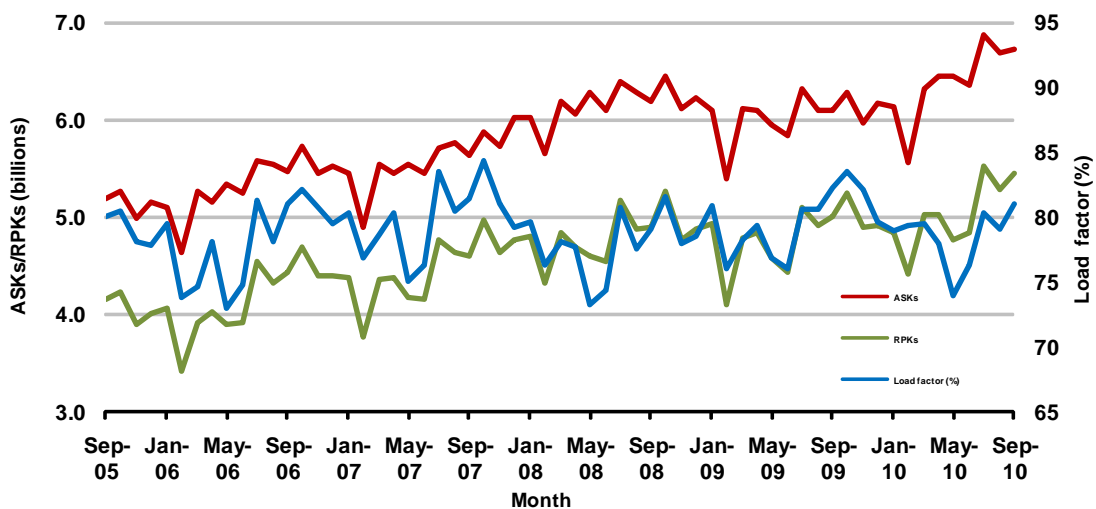
* percentage point difference

Domestic passenger traffic

(passenger traffic - monthly)



Network utilisation



TOP COMPETITIVE ROUTES

Table 1: Passengers carried (000s) — annual activity

	City-Pair	YE Sep 2009	YE Sep 2010	% Change
1	Melbourne - Sydney	6 867.3	7 834.6	14.1
2	Brisbane - Sydney	4 258.1	4 380.5	2.9
3	Brisbane - Melbourne	2 708.1	2 912.2	7.5
4	Gold Coast - Sydney	2 146.7	2 353.3	9.6
5	Adelaide - Melbourne	2 158.6	2 166.5	0.4
6	Adelaide - Sydney	1 557.3	1 760.6	13.1
7	Gold Coast - Melbourne	1 599.4	1 704.3	6.6
8	Melbourne - Perth	1 750.2	1 693.8	-3.2
9	Perth - Sydney	1 444.0	1 574.3	9.0
10	Hobart - Melbourne	1 212.0	1 210.2	-0.1
11	Brisbane - Cairns	1 164.4	1 146.4	-1.5
12	Canberra - Melbourne	1 102.7	1 122.4	1.8
13	Canberra - Sydney	999.5	1 081.0	8.2
14	Brisbane - Townsville	966.0	929.3	-3.8
15	Cairns - Sydney	858.4	853.7	-0.5
16	Launceston - Melbourne	833.7	831.0	-0.3
17	Brisbane - Mackay	752.3	758.7	0.8
18	Brisbane - Perth	719.4	741.4	3.1
19	Adelaide - Brisbane	648.8	688.6	6.1
20	Brisbane - Rockhampton	600.1	626.5	4.4
21	Brisbane - Canberra	609.8	609.1	-0.1
22	Adelaide - Perth	622.6	595.4	-4.4
23	Brisbane - Newcastle	563.3	578.8	2.7
24	Karratha - Perth	491.6	574.9	NA (a)
25	Hobart - Sydney	483.8	494.0	2.1
26	Sunshine Coast - Sydney	475.7	437.2	-8.1
27	Cairns - Melbourne	425.1	406.6	-4.4
28	Melbourne - Sunshine Coast	416.2	391.3	-6.0
29	Brisbane - Darwin	381.4	366.6	-3.9
30	Melbourne - Newcastle	387.3	352.5	-9.0
31	Broome - Perth	319.2	323.4	1.3
32	Perth - Port Hedland	45.2	318.0	NA (b)
33	Coffs Harbour - Sydney	295.8	302.0	2.1
34	Adelaide - Gold Coast	255.6	276.5	8.2
35	Darwin - Melbourne	233.5	276.4	18.4
36	Ballina - Sydney	264.1	266.3	0.8
37	Albury - Sydney	234.7	244.8	4.3
38	Kalgoorlie - Perth	209.1	219.2	4.8
39	Brisbane - Proserpine	223.9	211.3	-5.6
40	Port Macquarie - Sydney	185.7	207.5	11.8
41	Launceston - Sydney	209.1	207.4	-0.8
42	Adelaide - Canberra	207.9	197.3	-5.1
43	Melbourne - Mildura	187.1	194.6	4.0
44	Newman - Perth	181.1	188.7	NA (c)
45	Hamilton Island - Sydney	46.3	181.7	NA (d)

(continued)

Table 1: (continued) Passengers carried (000s) — annual activity

	City-Pair	YE Sep 2009	YE Sep 2010	% Change
46	Sydney - Wagga Wagga	174.6	181.7	4.0
47	Dubbo - Sydney	171.6	178.4	4.0
48	Brisbane - Hamilton Island	188.8	176.5	-6.5
49	Cairns - Townsville	154.3	174.9	13.3
50	Sydney - Townsville	168.4	168.6	0.1
51	Gold Coast - Newcastle	142.5	154.9	8.7
52	Darwin - Perth	74.5	148.6	NA (e)
53	Alice Springs - Melbourne	139.8	143.3	2.6
54	Adelaide - Port Lincoln	..	114.0	NA (f)
55	Ayers Rock - Sydney	..	14.2	NA (g)
	Total domestic network	50 298.9	52 787.3	4.9

(a) Karratha - Perth route included from October 2008, prior data not shown.

(b) Perth - Port Hedland route included from August 2009, prior data not shown.

(c) Newman - Perth route included from October 2008, prior data not shown.

(d) Hamilton Island - Sydney route included from July 2009, prior data not shown.

(e) Darwin - Perth route included from May 2009, prior data not shown.

(f) Adelaide - Port Lincoln route included from March 2010, prior data not shown.

(g) Ayers Rock - Sydney route included from September 2010, prior data not shown.

Table 2: Passengers carried (000s) — monthly activity

	City-Pair	Sep 2009	Sep 2010	% Change
1	Melbourne - Sydney	611.7	660.2	7.9
2	Brisbane - Sydney	368.5	376.0	2.0
3	Brisbane - Melbourne	250.7	284.4	13.4
4	Gold Coast - Sydney	184.0	197.6	7.4
5	Adelaide - Melbourne	164.5	189.4	15.1
6	Gold Coast - Melbourne	146.5	164.5	12.3
7	Adelaide - Sydney	137.5	147.4	7.2
8	Melbourne - Perth	142.8	145.4	1.8
9	Perth - Sydney	117.3	139.6	19.0
10	Brisbane - Cairns	97.8	102.4	4.8
11	Hobart - Melbourne	96.8	100.9	4.3
12	Canberra - Sydney	93.3	94.0	0.8
13	Canberra - Melbourne	91.2	92.4	1.4
14	Brisbane - Townsville	80.7	83.7	3.8
15	Cairns - Sydney	74.5	78.8	5.8
16	Brisbane - Mackay	63.1	75.3	19.4
17	Launceston - Melbourne	67.3	65.5	-2.6
18	Brisbane - Perth	63.0	65.0	3.2
19	Adelaide - Brisbane	53.7	64.9	20.9
20	Brisbane - Rockhampton	51.9	56.9	9.5
21	Brisbane - Canberra	53.2	54.4	2.3
22	Karratha - Perth	48.6	50.5	4.1
23	Adelaide - Perth	54.2	48.5	-10.5
24	Brisbane - Newcastle	47.4	48.4	2.1
25	Cairns - Melbourne	38.1	47.7	25.3
26	Hobart - Sydney	40.2	41.3	2.8
27	Sunshine Coast - Sydney	34.4	40.5	17.7
28	Melbourne - Sunshine Coast	35.1	37.1	5.6
29	Brisbane - Darwin	34.3	33.3	-2.7
30	Melbourne - Newcastle	29.7	32.8	10.4
31	Broome - Perth	31.1	30.8	-1.1
32	Perth - Port Hedland	23.0	29.2	27.1
33	Darwin - Melbourne	25.4	29.2	15.1
34	Coffs Harbour - Sydney	24.7	25.8	4.6
35	Ballina - Sydney	22.4	23.2	3.5
36	Adelaide - Gold Coast	24.7	23.1	-6.5
37	Albury - Sydney	21.1	22.4	6.3
38	Kalgoorlie - Perth	17.7	20.2	14.4
39	Brisbane - Proserpine	19.2	18.2	-4.9
40	Newman - Perth	15.4	18.2	18.5
41	Port Macquarie - Sydney	16.5	17.8	7.9
42	Launceston - Sydney	17.1	17.5	1.9
43	Melbourne - Mildura	16.0	17.4	8.3
44	Dubbo - Sydney	15.6	17.1	9.8
45	Sydney - Wagga Wagga	15.7	17.0	8.5
46	Hamilton Island - Sydney	16.5	16.7	1.2
47	Adelaide - Canberra	20.6	16.5	-19.9
48	Cairns - Townsville	14.3	16.4	14.7
49	Adelaide - Port Lincoln	..	16.4	NA (a)
50	Brisbane - Hamilton Island	17.6	16.2	-8.1
51	Gold Coast - Newcastle	10.9	16.2	48.1
52	Sydney - Townsville	14.6	14.8	1.1
53	Ayers Rock - Sydney	..	14.2	NA (b)
54	Darwin - Perth	14.2	13.7	-3.4
55	Alice Springs - Melbourne	12.9	13.7	6.8
	Total domestic network	4 346.9	4 693.4	8.0

(a) Adelaide - Port Lincoln route included from March 2010, prior data not shown.

(b) Ayers Rock - Sydney route included from September 2010, prior data not shown.

Table 3: Available seats (000s) — monthly activity

	City-Pair	Sep 2009	Sep 2010	% Change
1	Melbourne - Sydney	737.7	785.4	6.5
2	Brisbane - Sydney	438.6	451.8	3.0
3	Brisbane - Melbourne	278.4	333.4	19.8
4	Gold Coast - Sydney	214.0	232.0	8.4
5	Adelaide - Melbourne	187.0	233.3	24.7
6	Gold Coast - Melbourne	159.4	185.2	16.2
7	Adelaide - Sydney	159.5	181.6	13.8
8	Melbourne - Perth	169.9	178.3	4.9
9	Perth - Sydney	140.0	175.3	25.2
10	Brisbane - Cairns	112.6	121.0	7.4
11	Hobart - Melbourne	115.1	119.2	3.5
12	Canberra - Sydney	146.9	135.6	-7.7
13	Canberra - Melbourne	134.3	130.8	-2.6
14	Brisbane - Townsville	94.8	100.0	5.4
15	Cairns - Sydney	87.1	94.4	8.4
16	Brisbane - Mackay	74.6	92.0	23.4
17	Launceston - Melbourne	85.3	80.4	-5.7
18	Brisbane - Perth	73.0	73.6	0.8
19	Adelaide - Brisbane	60.8	77.6	27.5
20	Brisbane - Rockhampton	66.3	69.0	4.1
21	Brisbane - Canberra	67.2	68.0	1.2
22	Karratha - Perth	71.8	78.4	9.2
23	Adelaide - Perth	67.7	58.0	-14.4
24	Brisbane - Newcastle	62.2	59.0	-5.1
25	Cairns - Melbourne	41.7	53.8	29.2
26	Hobart - Sydney	49.4	49.8	0.7
27	Sunshine Coast - Sydney	41.9	53.4	27.4
28	Melbourne - Sunshine Coast	38.2	45.3	18.5
29	Brisbane - Darwin	43.2	42.1	-2.6
30	Melbourne - Newcastle	37.6	39.4	4.8
31	Broome - Perth	39.6	40.1	1.3
32	Perth - Port Hedland	31.6	42.1	33.2
33	Darwin - Melbourne	32.5	38.9	19.7
34	Coffs Harbour - Sydney	30.8	35.1	13.9
35	Ballina - Sydney	27.2	31.1	14.4
36	Adelaide - Gold Coast	27.5	27.8	1.1
37	Albury - Sydney	29.0	30.7	6.0
38	Kalgoorlie - Perth	26.2	25.5	-2.9
39	Brisbane - Proserpine	21.0	20.3	-2.9
40	Newman - Perth	26.9	28.2	4.6
41	Port Macquarie - Sydney	21.5	24.5	14.0
42	Launceston - Sydney	20.8	20.8	-0.1
43	Melbourne - Mildura	21.7	23.3	7.5
44	Dubbo - Sydney	21.4	22.8	6.4
45	Sydney - Wagga Wagga	22.5	24.8	10.6
46	Hamilton Island - Sydney	19.9	20.8	4.4
47	Adelaide - Canberra	27.2	21.9	-19.7
48	Cairns - Townsville	23.1	24.1	4.3
49	Adelaide - Port Lincoln	..	28.1	NA (a)
50	Brisbane - Hamilton Island	20.9	19.8	-5.4
51	Gold Coast - Newcastle	13.8	21.0	52.5
52	Sydney - Townsville	16.6	16.9	2.3
53	Ayers Rock - Sydney	..	17.1	NA (b)
54	Darwin - Perth	23.4	17.8	-24.2
55	Alice Springs - Melbourne	14.9	16.2	8.5
	Total domestic network	5 424.1	5 878.5	8.4

(a) Adelaide - Port Lincoln route included from March 2010, prior data not shown.

(b) Ayers Rock - Sydney route included from September 2010, prior data not shown.

Table 4: Load factors (%) — monthly activity

	City-Pair	Sep 2009	Sep 2010	% Point diff
1	Melbourne - Sydney	82.9	84.0	1.1
2	Brisbane - Sydney	84.0	83.2	-0.8
3	Brisbane - Melbourne	90.0	85.3	-4.7
4	Gold Coast - Sydney	86.0	85.2	-0.8
5	Adelaide - Melbourne	88.0	81.2	-6.8
6	Gold Coast - Melbourne	91.9	88.8	-3.1
7	Adelaide - Sydney	86.2	81.2	-5.0
8	Melbourne - Perth	84.1	81.6	-2.5
9	Perth - Sydney	83.8	79.6	-4.2
10	Brisbane - Cairns	86.8	84.6	-2.2
11	Hobart - Melbourne	84.1	84.7	0.6
12	Canberra - Sydney	63.5	69.3	5.8
13	Canberra - Melbourne	67.9	70.7	2.8
14	Brisbane - Townsville	85.1	83.8	-1.3
15	Cairns - Sydney	85.5	83.5	-2.0
16	Brisbane - Mackay	84.6	81.8	-2.8
17	Launceston - Melbourne	78.9	81.5	2.6
18	Brisbane - Perth	86.3	88.4	2.1
19	Adelaide - Brisbane	88.3	83.7	-4.6
20	Brisbane - Rockhampton	78.4	82.4	4.0
21	Brisbane - Canberra	79.2	80.1	0.9
22	Karratha - Perth	67.6	64.5	-3.1
23	Adelaide - Perth	80.0	83.7	3.7
24	Brisbane - Newcastle	76.3	82.0	5.7
25	Cairns - Melbourne	91.4	88.7	-2.7
26	Hobart - Sydney	81.2	82.9	1.7
27	Sunshine Coast - Sydney	82.1	75.9	-6.2
28	Melbourne - Sunshine Coast	92.0	82.0	-10.0
29	Brisbane - Darwin	79.3	79.2	-0.1
30	Melbourne - Newcastle	79.0	83.2	4.2
31	Broome - Perth	78.6	76.8	-1.8
32	Perth - Port Hedland	72.7	69.4	-3.3
33	Darwin - Melbourne	78.0	75.0	-3.0
34	Coffs Harbour - Sydney	80.1	73.5	-6.6
35	Ballina - Sydney	82.3	74.5	-7.8
36	Adelaide - Gold Coast	90.0	83.2	-6.8
37	Albury - Sydney	72.6	72.8	0.2
38	Kalgoorlie - Perth	67.4	79.4	12.0
39	Brisbane - Proserpine	91.4	89.6	-1.8
40	Newman - Perth	57.0	64.6	7.6
41	Port Macquarie - Sydney	76.6	72.5	-4.1
42	Launceston - Sydney	82.3	84.0	1.7
43	Melbourne - Mildura	74.1	74.7	0.6
44	Dubbo - Sydney	72.7	75.0	2.3
45	Sydney - Wagga Wagga	69.8	68.5	-1.3
46	Hamilton Island - Sydney	82.7	80.2	-2.5
47	Adelaide - Canberra	75.7	75.5	-0.2
48	Cairns - Townsville	61.7	67.9	6.2
49	Adelaide - Port Lincoln	..	58.2	NA (a)
50	Brisbane - Hamilton Island	84.2	81.8	-2.4
51	Gold Coast - Newcastle	79.4	77.1	-2.3
52	Sydney - Townsville	88.2	87.2	-1.0
53	Ayers Rock - Sydney	..	82.9	NA (b)
54	Darwin - Perth	60.7	77.4	16.7
55	Alice Springs - Melbourne	86.2	84.8	-1.4
	Total domestic network	82.3	81.0	-1.3

(a) Adelaide - Port Lincoln route included from March 2010, prior data not shown.

(b) Ayers Rock - Sydney route included from September 2010, prior data not shown.

Table 5: Aircraft movements — monthly activity

	City-Pair	Sep 2009	Sep 2010	% Change
1	Melbourne - Sydney	3 789	4 061	7.2
2	Brisbane - Sydney	2 363	2 447	3.6
3	Brisbane - Melbourne	1 633	1 960	20.0
4	Gold Coast - Sydney	1 215	1 345	10.7
5	Adelaide - Melbourne	1 216	1 438	18.3
6	Gold Coast - Melbourne	878	1 005	14.5
7	Adelaide - Sydney	961	1 067	11.0
8	Melbourne - Perth	833	838	0.6
9	Perth - Sydney	669	811	21.2
10	Brisbane - Cairns	677	703	3.8
11	Hobart - Melbourne	675	685	1.5
12	Canberra - Sydney	1 581	1 325	-16.2
13	Canberra - Melbourne	989	936	-5.4
14	Brisbane - Townsville	626	656	4.8
15	Cairns - Sydney	460	521	13.3
16	Brisbane - Mackay	596	688	15.4
17	Launceston - Melbourne	600	580	-3.3
18	Brisbane - Perth	359	360	0.3
19	Adelaide - Brisbane	408	501	22.8
20	Brisbane - Rockhampton	698	725	3.9
21	Brisbane - Canberra	535	542	1.3
22	Karratha - Perth	503	547	8.7
23	Adelaide - Perth	455	404	-11.2
24	Brisbane - Newcastle	461	474	2.8
25	Cairns - Melbourne	214	274	28.0
26	Hobart - Sydney	300	346	15.3
27	Sunshine Coast - Sydney	249	317	27.3
28	Melbourne - Sunshine Coast	219	257	17.4
29	Brisbane - Darwin	219	214	-2.3
30	Melbourne - Newcastle	221	230	4.1
31	Broome - Perth	332	326	-1.8
32	Perth - Port Hedland	230	322	40.0
33	Darwin - Melbourne	172	205	19.2
34	Coffs Harbour - Sydney	359	405	12.8
35	Ballina - Sydney	278	327	17.6
36	Adelaide - Gold Coast	176	173	-1.7
37	Albury - Sydney	558	583	4.5
38	Kalgoorlie - Perth	221	201	-9.0
39	Brisbane - Proserpine	120	116	-3.3
40	Newman - Perth	240	252	5.0
41	Port Macquarie - Sydney	313	380	21.4
42	Launceston - Sydney	120	120	0.0
43	Melbourne - Mildura	446	412	-7.6
44	Dubbo - Sydney	538	572	6.3
45	Sydney - Wagga Wagga	542	506	-6.6
46	Hamilton Island - Sydney	120	119	-0.8
47	Adelaide - Canberra	195	160	-17.9
48	Cairns - Townsville	351	386	10.0
49	Adelaide - Port Lincoln	..	607	NA (a)
50	Brisbane - Hamilton Island	120	114	-5.0
51	Gold Coast - Newcastle	82	120	46.3
52	Sydney - Townsville	100	102	2.0
53	Ayers Rock - Sydney	..	124	NA (b)
54	Darwin - Perth	136	112	-17.6
55	Alice Springs - Melbourne	87	94	8.0
	Total domestic network	46 474	49 002	5.4

(a) Adelaide - Port Lincoln route included from March 2010, prior data not shown.

(b) Ayers Rock - Sydney route included from September 2010, prior data not shown.

TOP TEN AIRPORTS

Table 6: Top ten airport passenger movements (000s) - annual activity ^(a)

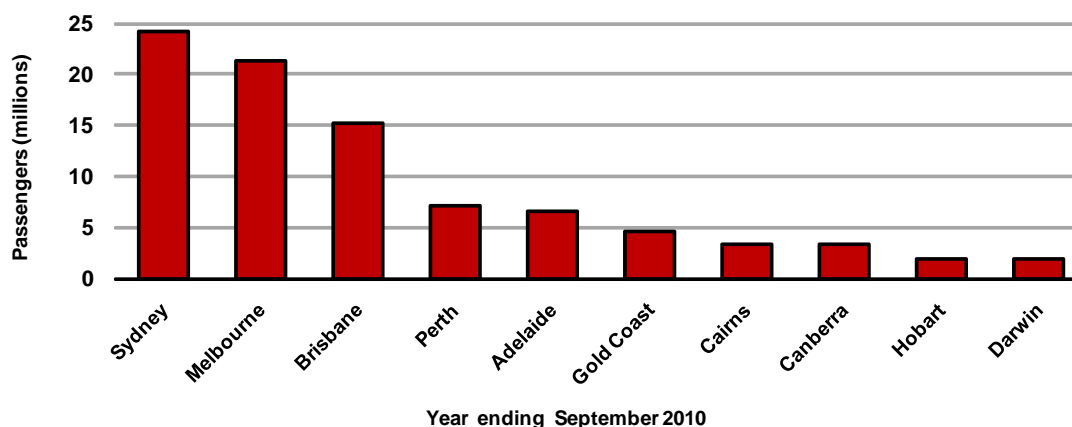
Airport	YE Sep 2009	YE Sep 2010	% Change	% of Total
1 Sydney	22 339.9	24 133.1	8.0	22.9
2 Melbourne	19 827.7	21 235.7	7.1	20.1
3 Brisbane	14 774.3	15 150.9	2.5	14.4
4 Perth	6 822.8	7 128.0	4.5	6.8
5 Adelaide	6 378.4	6 636.3	4.0	6.3
6 Gold Coast	4 255.4	4 638.5	9.0	4.4
7 Cairns	3 292.4	3 301.1 ^(b)	0.3	3.1
8 Canberra	3 115.5	3 266.2	4.8	3.1
9 Hobart	1 883.5	1 859.6	-1.3	1.8
10 Darwin	1 704.5	1 840.0	8.0	1.7
Total top ten airports	84 394.4	89 189.4	5.7	84.5
Total domestic network	100 597.8	105 574.5	4.9	100.0

Table 7: Top ten airport passenger movements (000s) - monthly activity ^(a)

Airport	Sep 2009	Sep 2010	% Change	% of Total
1 Sydney	1 942.1	2 084.0	7.3	22.2
2 Melbourne	1 704.6	1 894.4	11.1	20.2
3 Brisbane	1 280.8	1 377.5	7.5	14.7
4 Perth	589.2	629.4	6.8	6.7
5 Adelaide	535.6	571.0	6.6	6.1
6 Gold Coast	378.0	414.0	9.5	4.4
7 Cairns	286.1	310.8 ^(b)	8.7	3.3
8 Canberra	278.6	280.6	0.7	3.0
9 Darwin	160.7	175.3	9.1	1.9
10 Hobart	150.7	151.5	0.5	1.6
Total top ten airports	7 306.3	7 888.4	8.0	84.0
Total domestic network	8 693.7	9 386.7	8.0	100.0

Top ten airport passenger movements ^(a)

(Domestic and regional passenger traffic - traffic on board)



(a) - provisional data

(b) - includes estimates

TOP TEN ROUTES

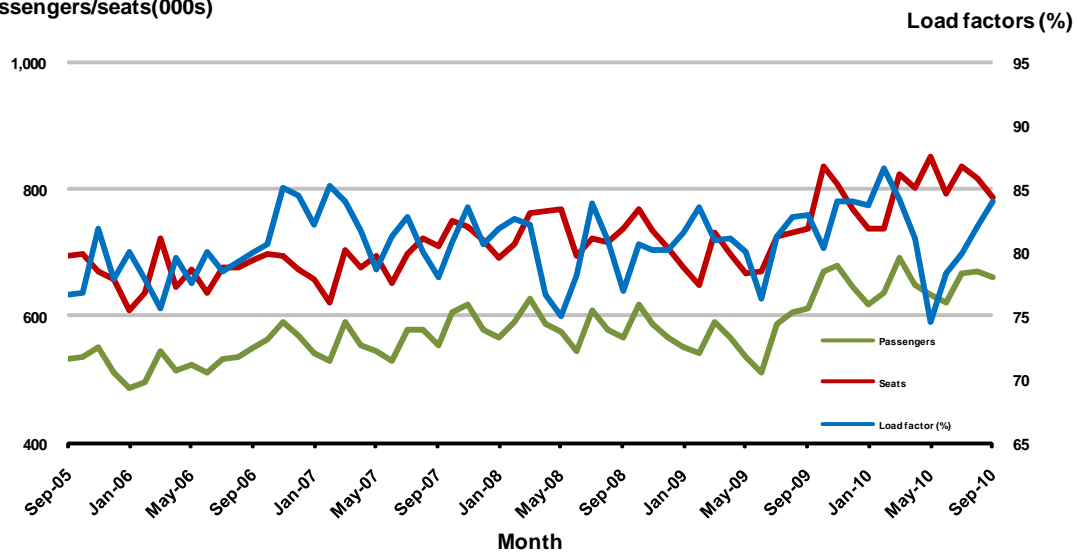
1. Melbourne - Sydney

Monthly data

	Sep 2009	Sep 2010	% Change
Passengers carried (000s)	611.7	660.2	7.9
Seats (000s)	737.7	785.4	6.5
Load factor %	82.9	84.0	1.1 *
Aircraft trips	3 789	4 061	7.2

* percentage point difference

Passengers/seats(000s)

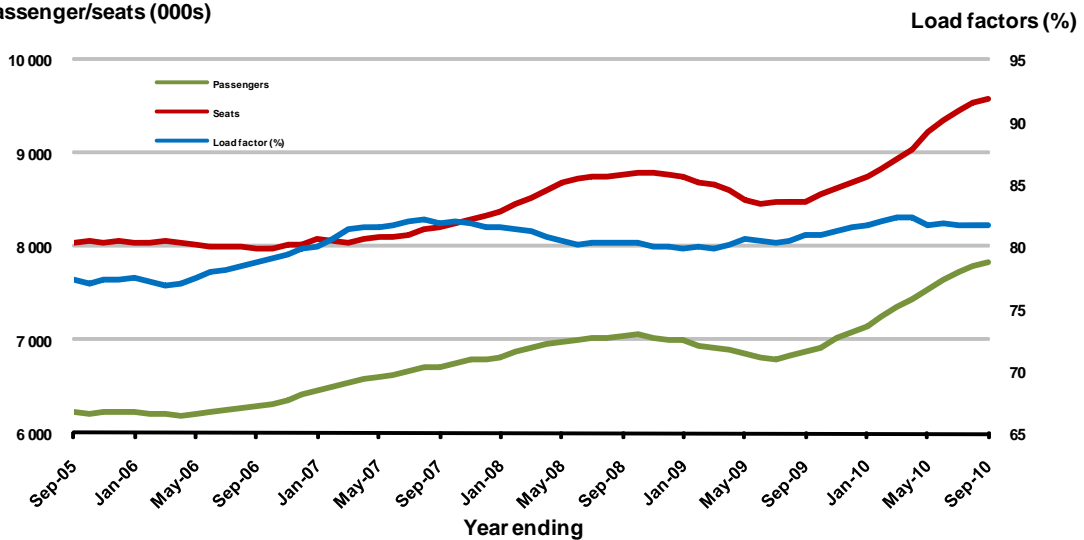


Moving annual data

	YE Sep 2009	YE Sep 2010	% Change
Passengers carried (000s)	6 867.3	7 834.6	14.1
Seats (000s)	8 484.0	9 583.3	13.0
Load factor %	80.9	81.8	0.8 *
Aircraft trips	44 245	50 002	13.0

* percentage point difference

Passenger/seats (000s)

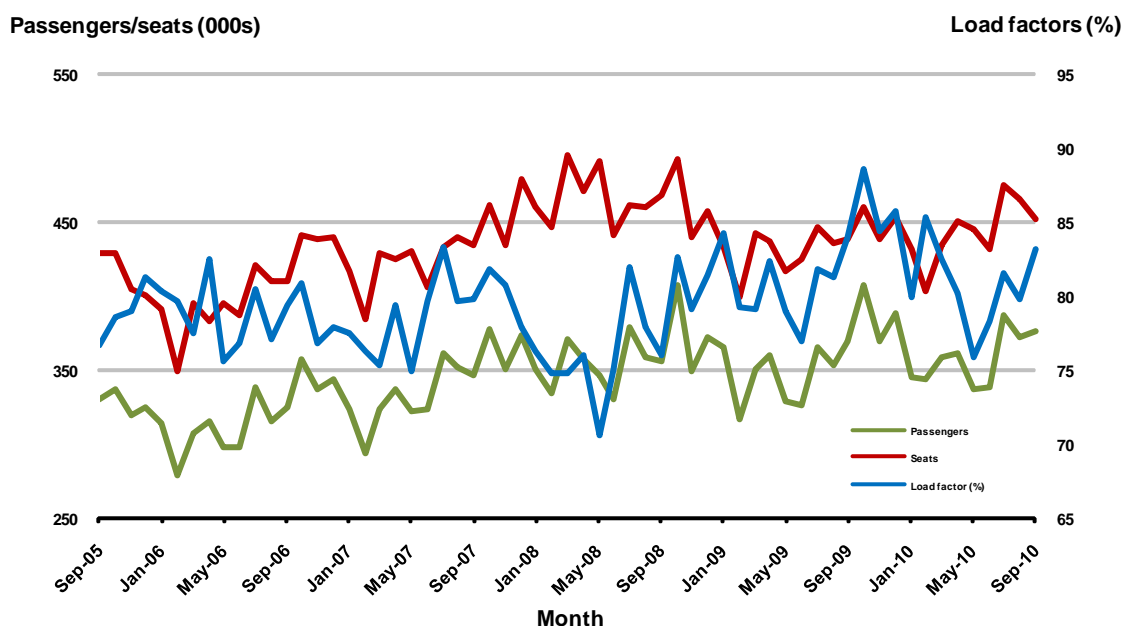


2. Brisbane - Sydney

Monthly data

	Sep 2009	Sep 2010	% Change
Passengers carried (000s)	368.5	376.0	2.0
Seats (000s)	438.6	451.8	3.0
Load factor %	84.0	83.2	-0.8 *
Aircraft trips	2 363	2 447	3.6

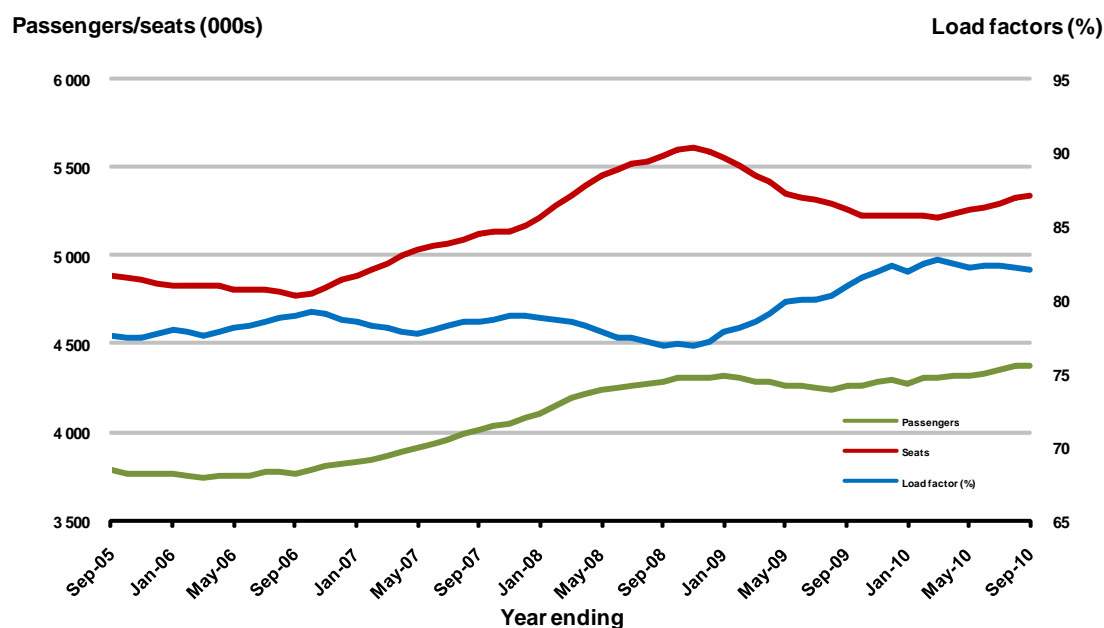
* percentage point difference



Moving annual data

	YE Sep 2009	YE Sep 2010	% Change
Passengers carried (000s)	4 258.1	4 380.5	2.9
Seats (000s)	5 259.8	5 338.2	1.5
Load factor %	81.0	82.1	1.1 *
Aircraft trips	28 926	29 286	1.2

* percentage point difference

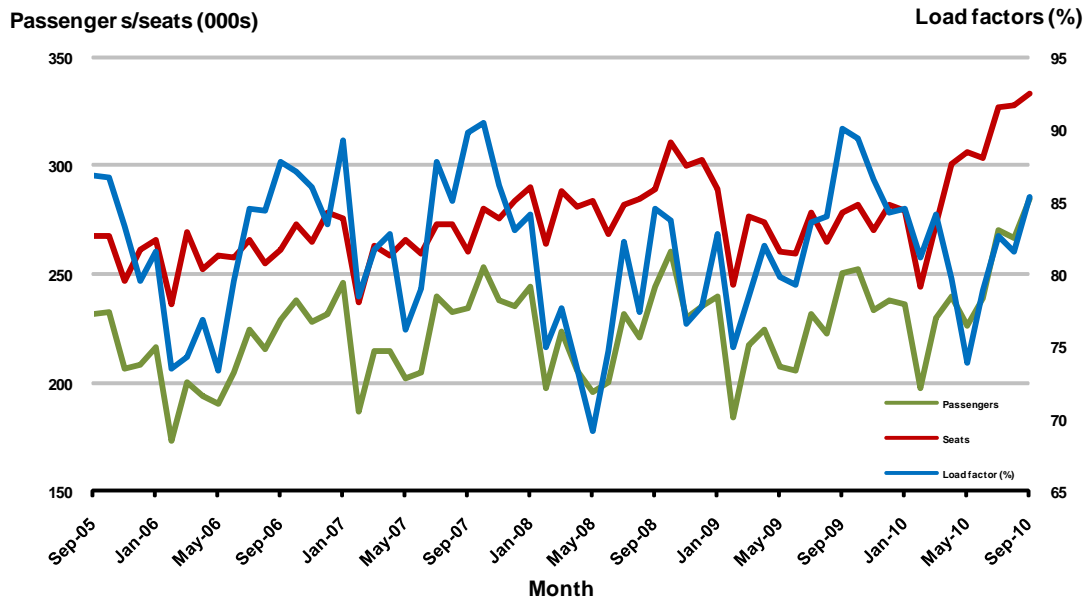


3. Brisbane - Melbourne

Monthly data

	Sep 2009	Sep 2010	% Change
Passengers carried (000s)	250.7	284.4	13.4
Seats (000s)	278.4	333.4	19.8
Load factor %	90.0	85.3	-4.7 *
Aircraft trips	1 633	1 960	20.0

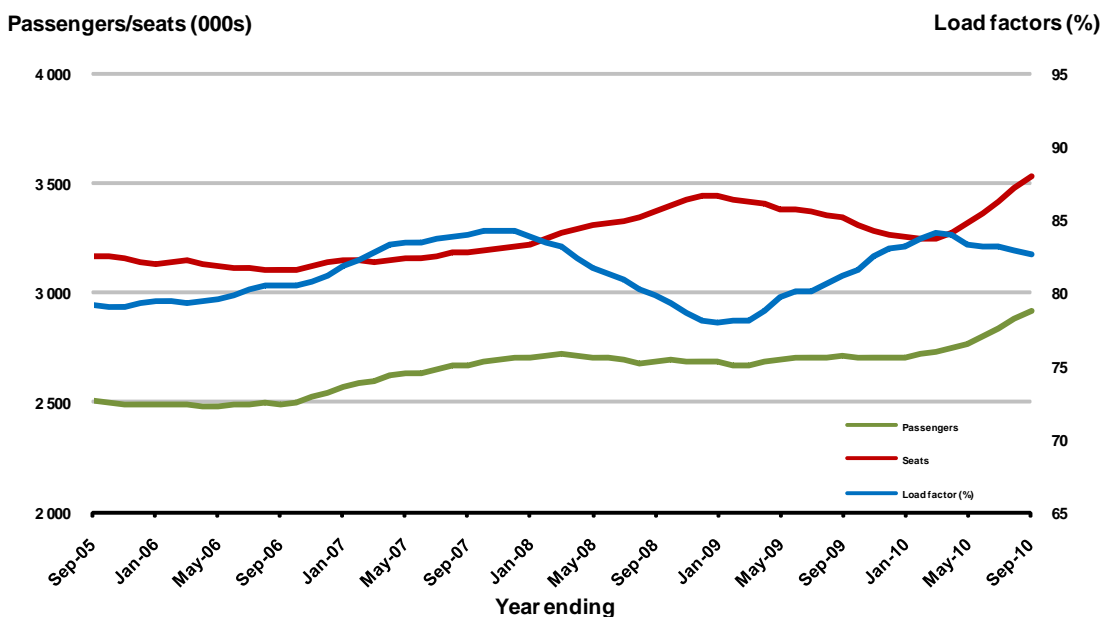
* percentage point difference



Moving annual data

	YE Sep 2009	YE Sep 2010	% Change
Passengers carried (000s)	2 708.1	2 912.2	7.5
Seats (000s)	3 339.1	3 527.2	5.6
Load factor %	81.1	82.6	1.5 *
Aircraft trips	20 152	20 927	3.8

* percentage point difference



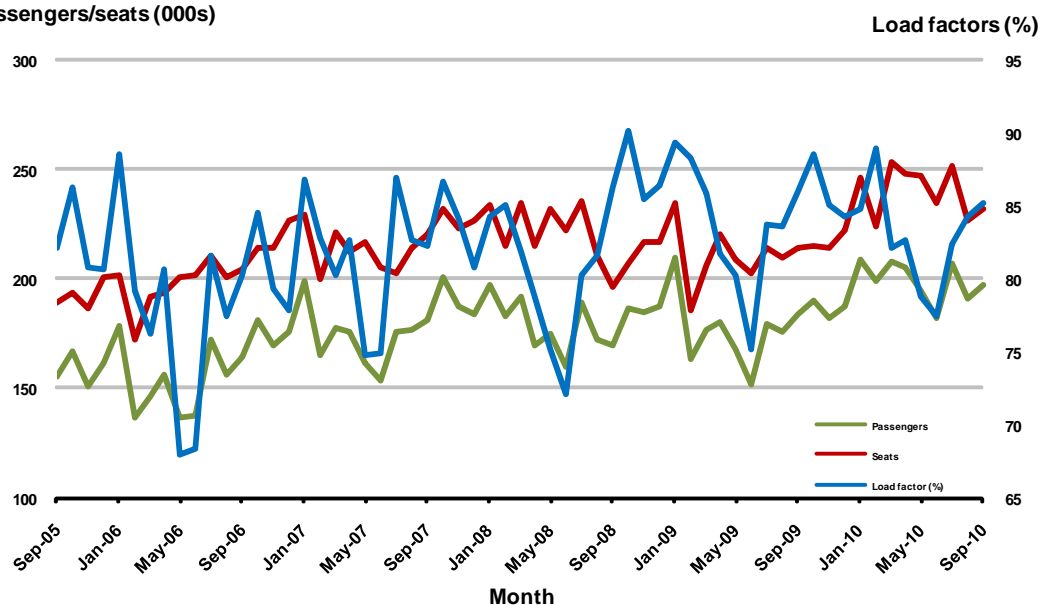
4. Gold Coast - Sydney

Monthly data

	Sep 2009	Sep 2010	% Change
Passengers carried (000s)	184.0	197.6	7.4
Seats (000s)	214.0	232.0	8.4
Load factor %	86.0	85.2	-0.8 *
Aircraft trips	1 215	1 345	10.7

* percentage point difference

Passengers/seats (000s)

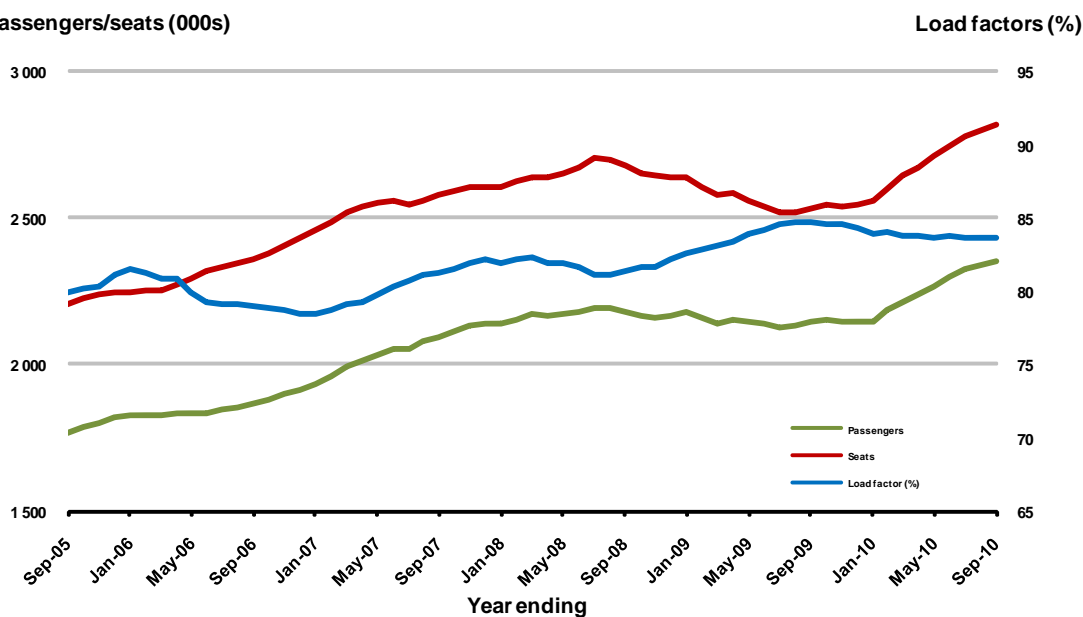


Moving annual data

	YE Sep 2009	YE Sep 2010	% Change
Passengers carried (000s)	2 146.7	2 353.3	9.6
Seats (000s)	2 535.0	2 815.3	11.1
Load factor %	84.7	83.6	-1.1 *
Aircraft trips	14 592	16 016	9.8

* percentage point difference

Passengers/seats (000s)



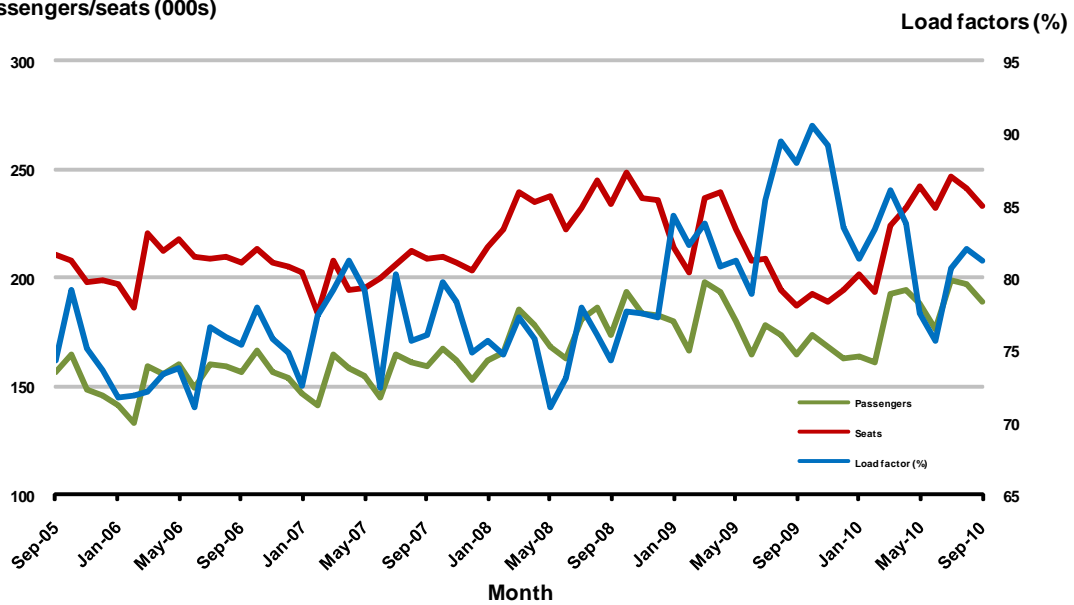
5. Adelaide - Melbourne

Monthly data

	Sep 2009	Sep 2010	% Change
Passengers carried (000s)	164.5	189.4	15.1
Seats (000s)	187.0	233.3	24.7
Load factor %	88.0	81.2	-6.8 *
Aircraft trips	1 216	1 438	18.3

* percentage point difference

Passengers/seats (000s)

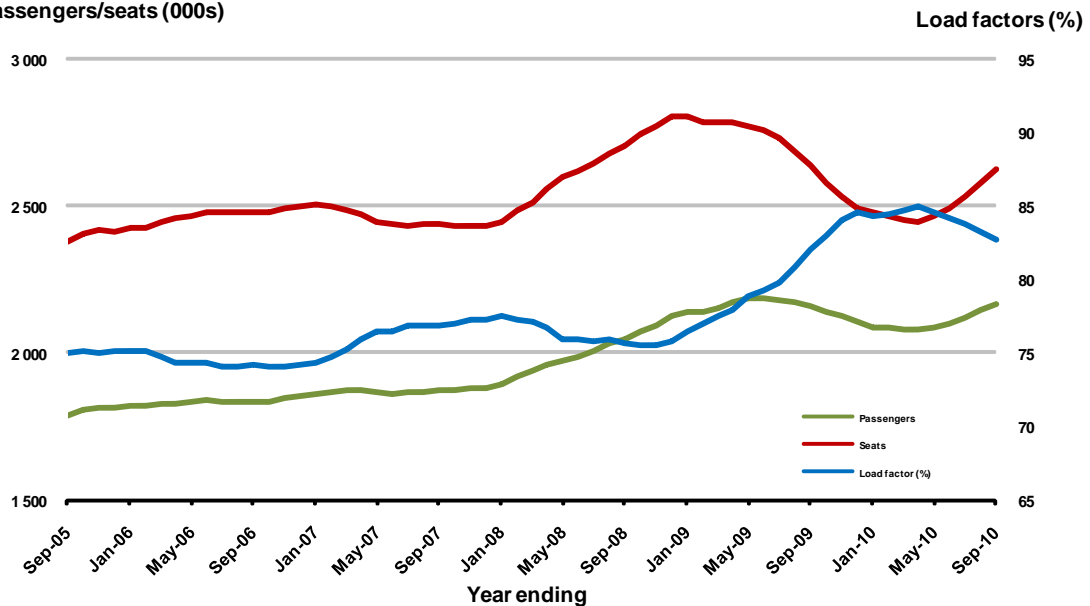


Moving annual data

	YE Sep 2009	YE Sep 2010	% Change
Passengers carried (000s)	2 158.6	2 166.5	0.4
Seats (000s)	2 633.9	2 621.8	-0.5
Load factor %	82.0	82.6	0.7 *
Aircraft trips	16 905	16 560	-2.0

* percentage point difference

Passengers/seats (000s)



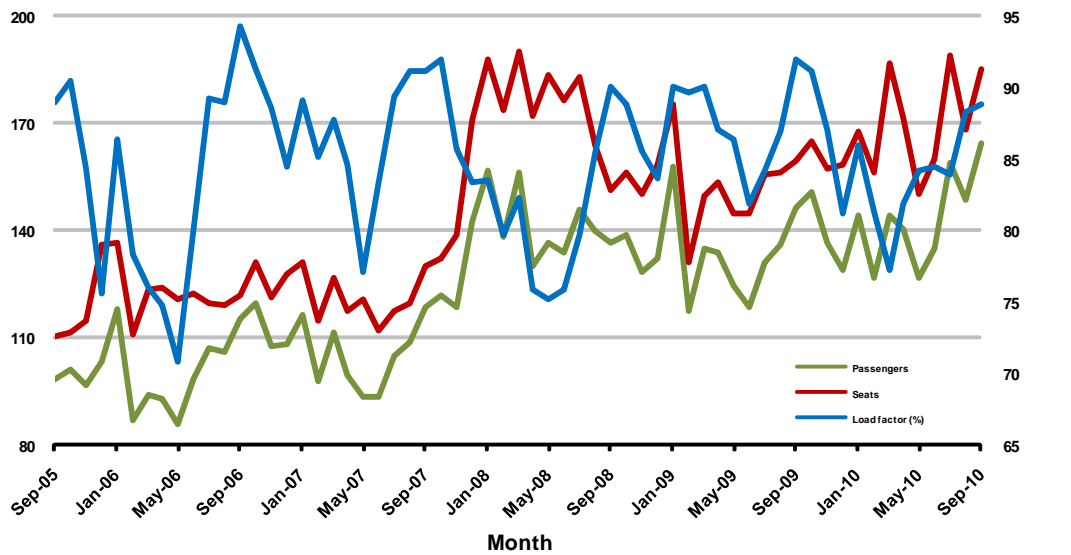
6. Gold Coast - Melbourne

Monthly data

	Sep 2009	Sep 2010	% Change
Passengers carried (000s)	146.5	164.5	12.3
Seats (000s)	159.4	185.2	16.2
Load factor %	91.9	88.8	-3.1 *
Aircraft trips	878	1 005	14.5

* percentage point difference

Passengers/seats (000s) Load factors (%)

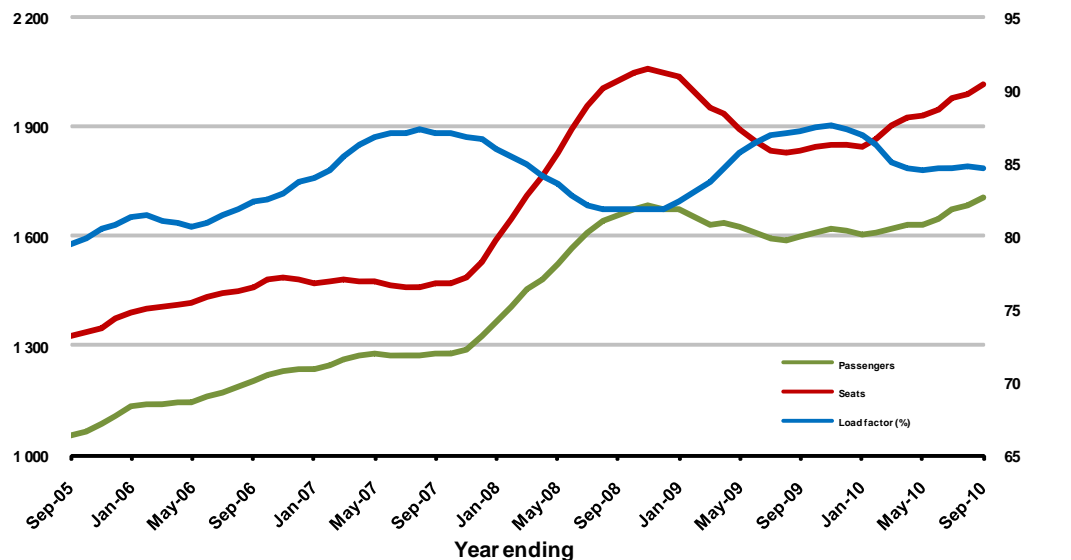


Moving annual data

	YE Sep 2009	YE Sep 2010	% Change
Passengers carried (000s)	1 599.4	1 704.3	6.6
Seats (000s)	1 834.4	2 014.7	9.8
Load factor %	87.2	84.6	-2.6 *
Aircraft trips	10 125	10 981	8.5

* percentage point difference

Passengers/seats (000s) Load factors (%)



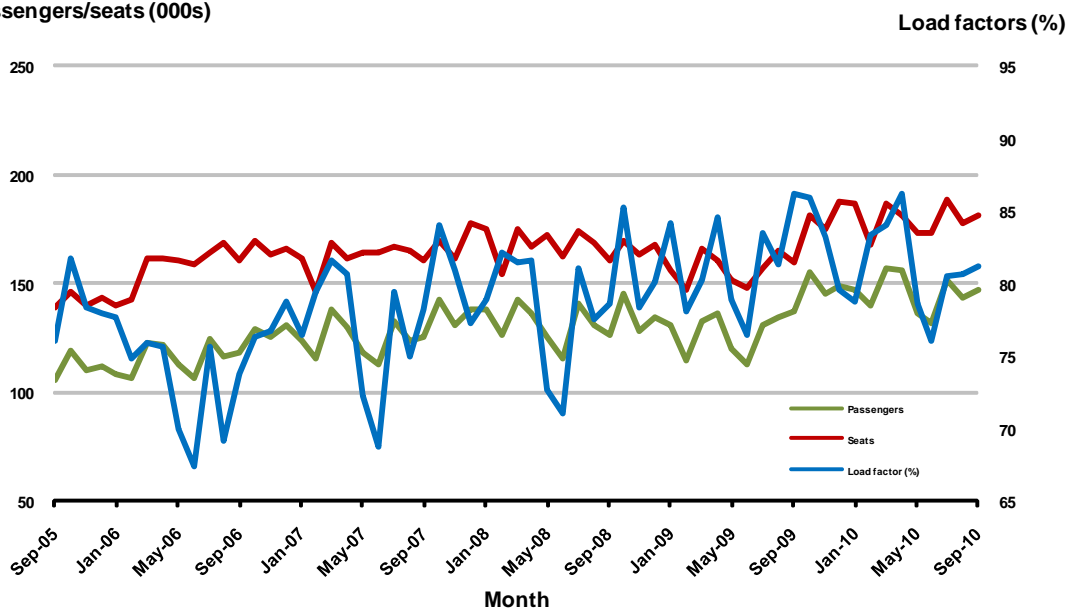
7. Adelaide - Sydney

Monthly data

	Sep 2009	Sep 2010	% Change
Passengers carried (000s)	137.5	147.4	7.2
Seats (000s)	159.5	181.6	13.8
Load factor %	86.2	81.2	-5.0 *
Aircraft trips	961	1 067	11.0

* percentage point difference

Passengers/seats (000s)

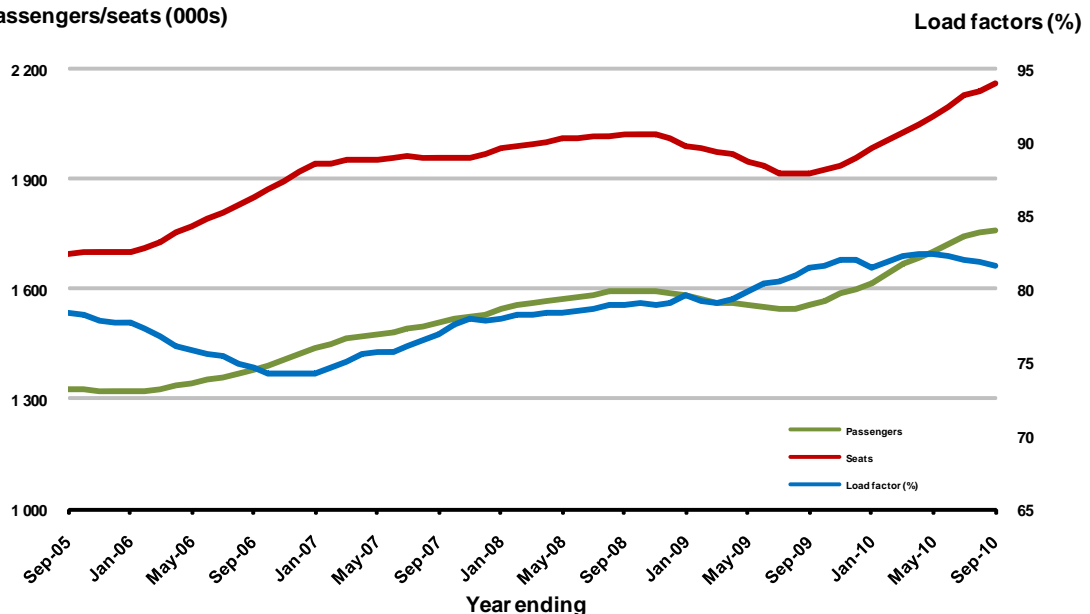


Moving annual data

	YE Sep 2009	YE Sep 2010	% Change
Passengers carried (000s)	1 557.3	1 760.6	13.1
Seats (000s)	1 911.2	2 160.4	13.0
Load factor %	81.5	81.5	0.0 *
Aircraft trips	11 604	12 916	11.3

* percentage point difference

Passengers/seats (000s)



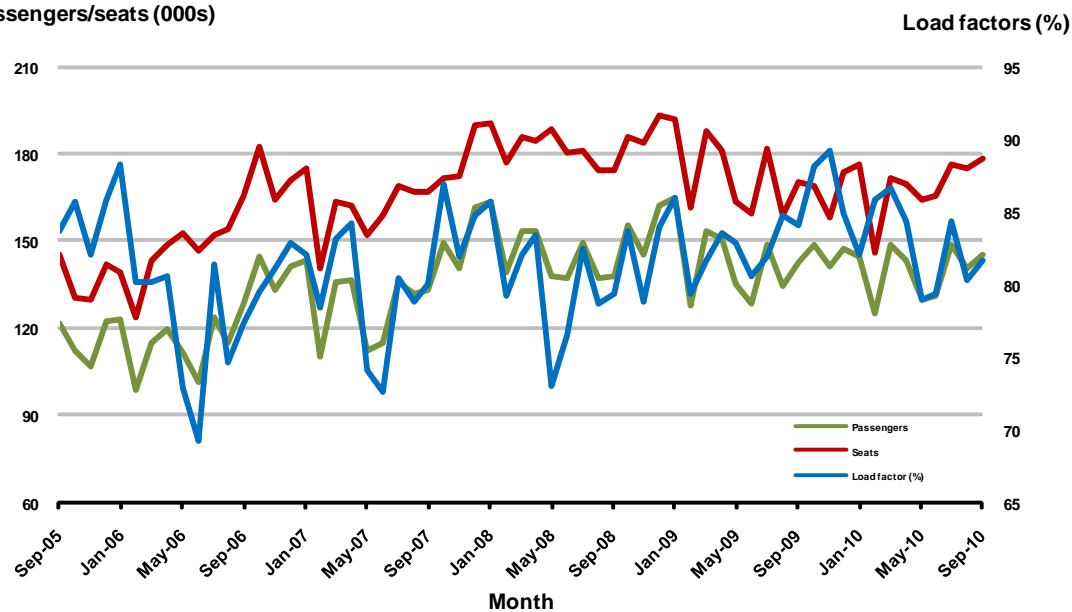
8. Melbourne - Perth

Monthly data

	Sep 2009	Sep 2010	% Change
Passengers carried (000s)	142.8	145.4	1.8
Seats (000s)	169.9	178.3	4.9
Load factor %	84.1	81.6	-2.5 *
Aircraft trips	833	838	0.6

* percentage point difference

Passengers/seats (000s)

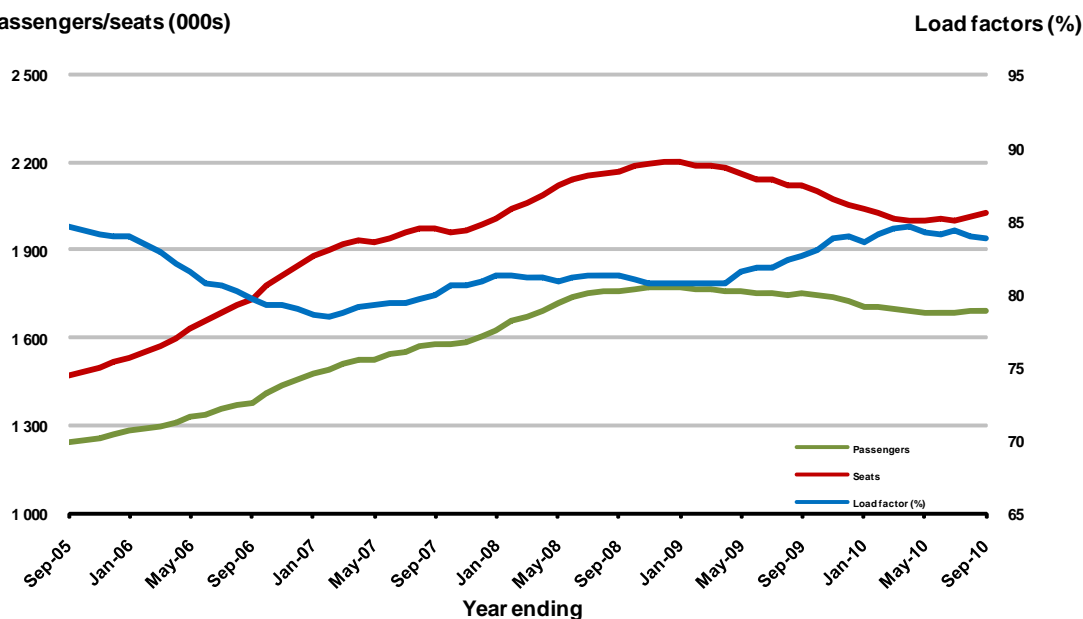


Moving annual data

	YE Sep 2009	YE Sep 2010	% Change
Passengers carried (000s)	1 750.2	1 693.8	-3.2
Seats (000s)	2 117.9	2 023.2	-4.5
Load factor %	82.6	83.7	1.1 *
Aircraft trips	10 404	9 762	-6.2

* percentage point difference

Passengers/seats (000s)



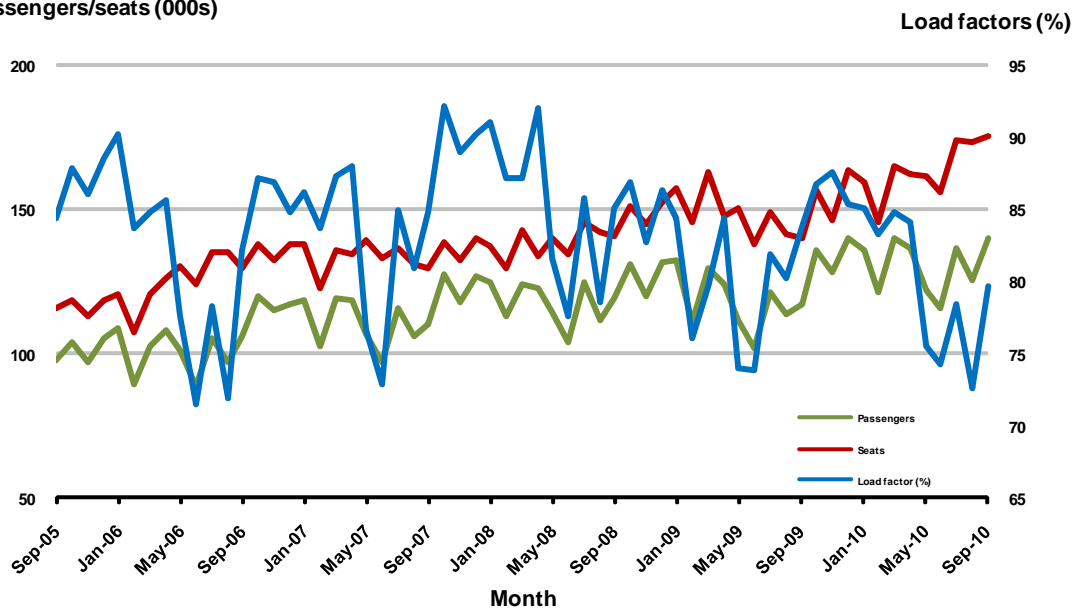
9. Perth - Sydney

Monthly data

	Sep 2009	Sep 2010	% Change
Passengers carried (000s)	117.3	139.6	19.0
Seats (000s)	140.0	175.3	25.2
Load factor %	83.8	79.6	-4.2 *
Aircraft trips	669	811	21.2

* percentage point difference

Passengers/seats (000s)

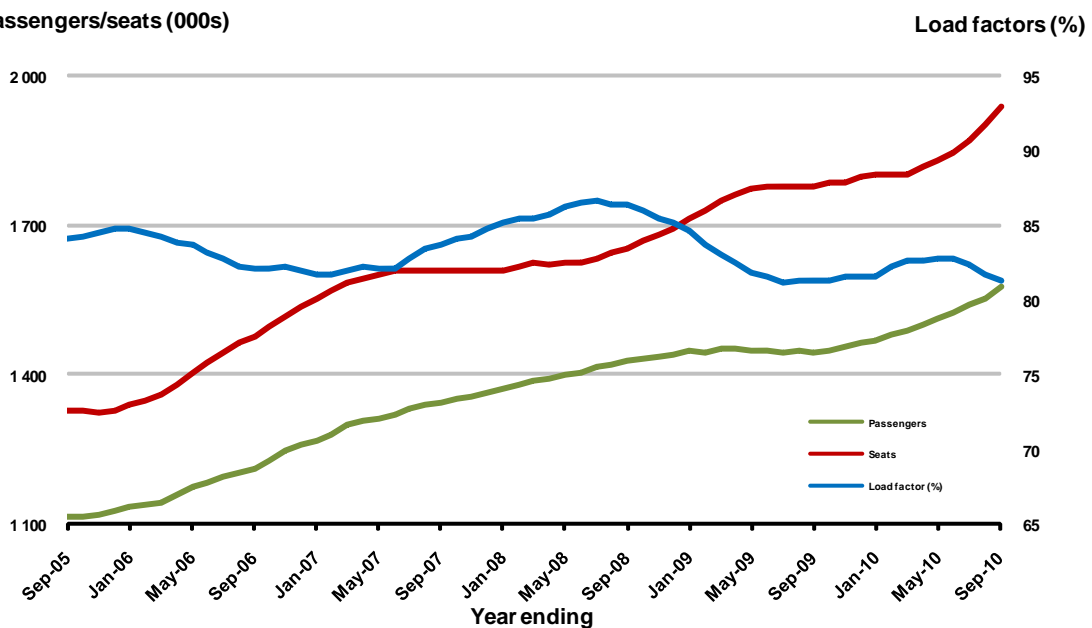


Moving annual data

	YE Sep 2009	YE Sep 2010	% Change
Passengers carried (000s)	1 444.0	1 574.3	9.0
Seats (000s)	1 777.9	1 936.7	8.9
Load factor %	81.2	81.3	0.1 *
Aircraft trips	8 339	9 247	10.9

* percentage point difference

Passengers/seats (000s)



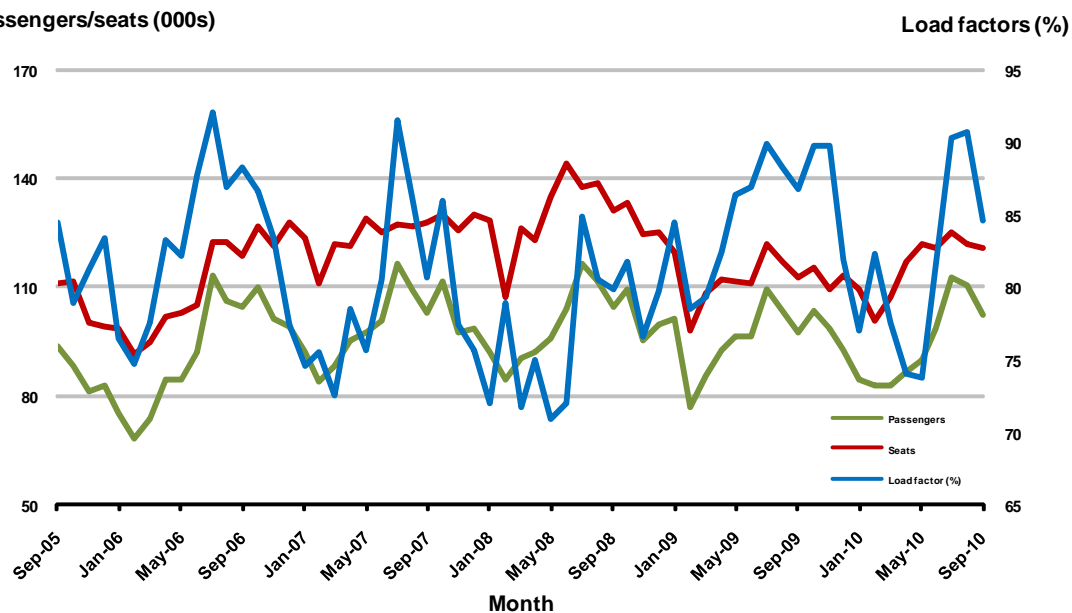
10. Brisbane - Cairns

Monthly data

	Sep 2009	Sep 2010	% Change
Passengers carried (000s)	97.8	102.4	4.8
Seats (000s)	112.6	121.0	7.4
Load factor %	86.8	84.6	-2.2 *
Aircraft trips	677	703	3.8

* percentage point difference

Passengers/seats (000s)

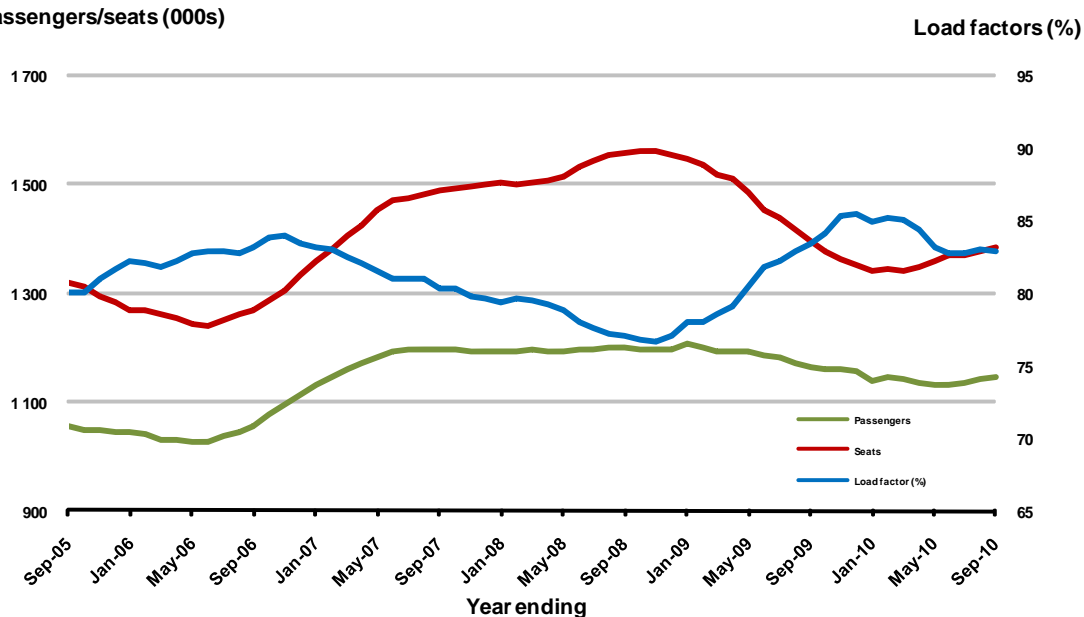


Moving annual data

	YE Sep 2009	YE Sep 2010	% Change
Passengers carried (000s)	1 164.4	1 146.4	-1.5
Seats (000s)	1 395.9	1 383.8	-0.9
Load factor %	83.4	82.8	-0.6 *
Aircraft trips	8 316	8 406	1.1

* percentage point difference

Passengers/seats (000s)



DEFINITIONS

Aircraft Trips	The number of flight stages. A return flight counts as two aircraft trips.
Available Seat Kilometres (ASKs)	Calculated by multiplying the number of seats available on each flight stage, by the distance in kilometres between the ports. The distances used are Great Circle Distances.
City-Pair	The ports shown make up the city-pair route. Passenger movements shown for a city pair reflect total traffic in both directions.
Flight Stage	The operation of an aircraft from take-off to landing.
Load Factor	The total revenue passenger kilometres performed as a percentage of the total available seat kilometres.
Passenger Carried	Revenue passengers carried.
Revenue Passengers	All passengers paying any fare. Frequent flyer redemption travellers are regarded as revenue passengers.
Revenue Passenger Kilometres (RPKs)	Calculated by multiplying the number of revenue passengers travelling on each flight stage, by the distance in kilometres between the ports. The distances used are Great Circle Distances.
Traffic on board by stages	The total of all traffic (revenue passengers) on each flight stage between two directly connected airports.
..	Data not included
NA	Not applicable