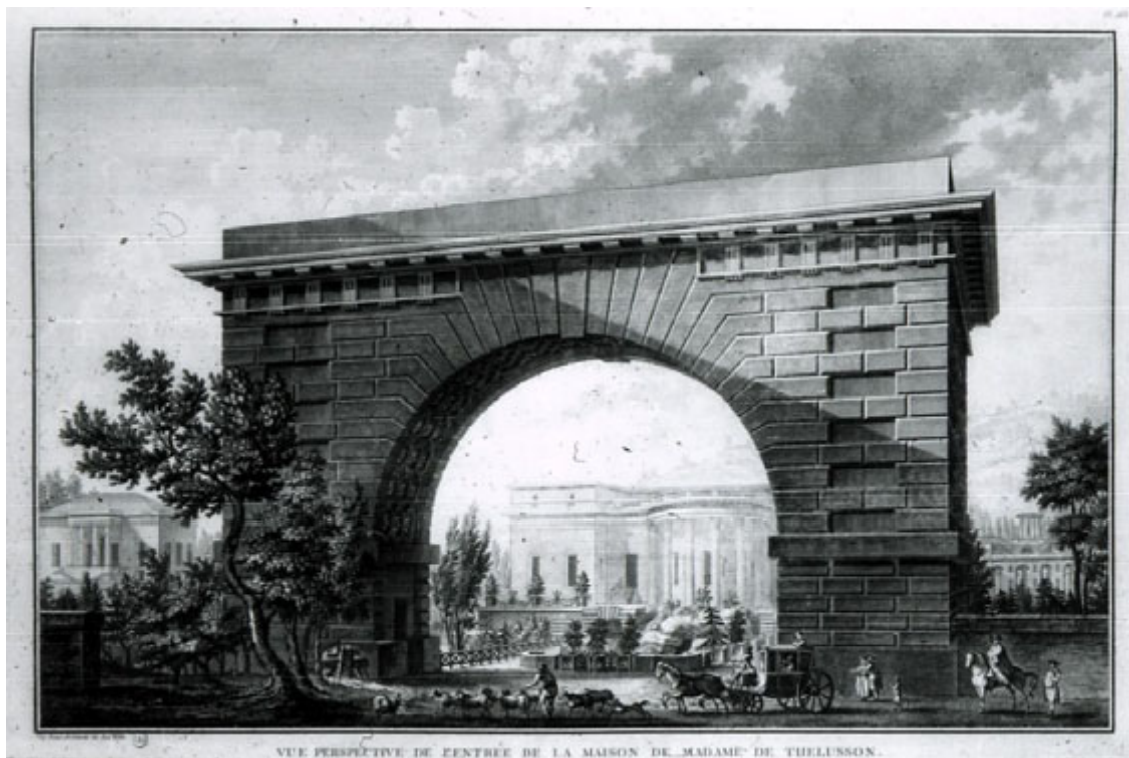
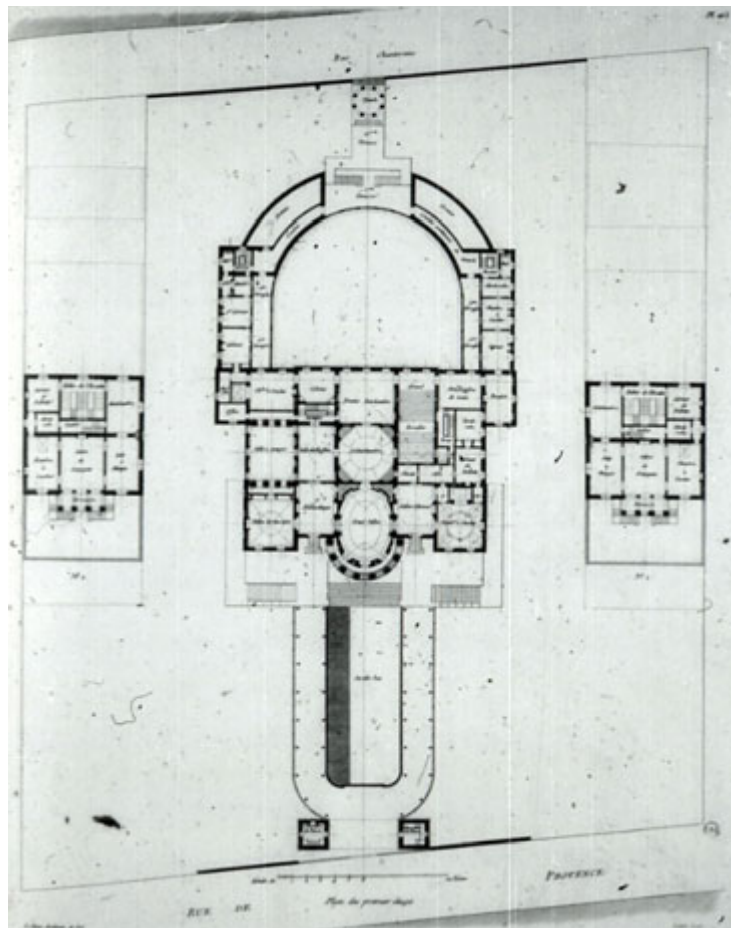
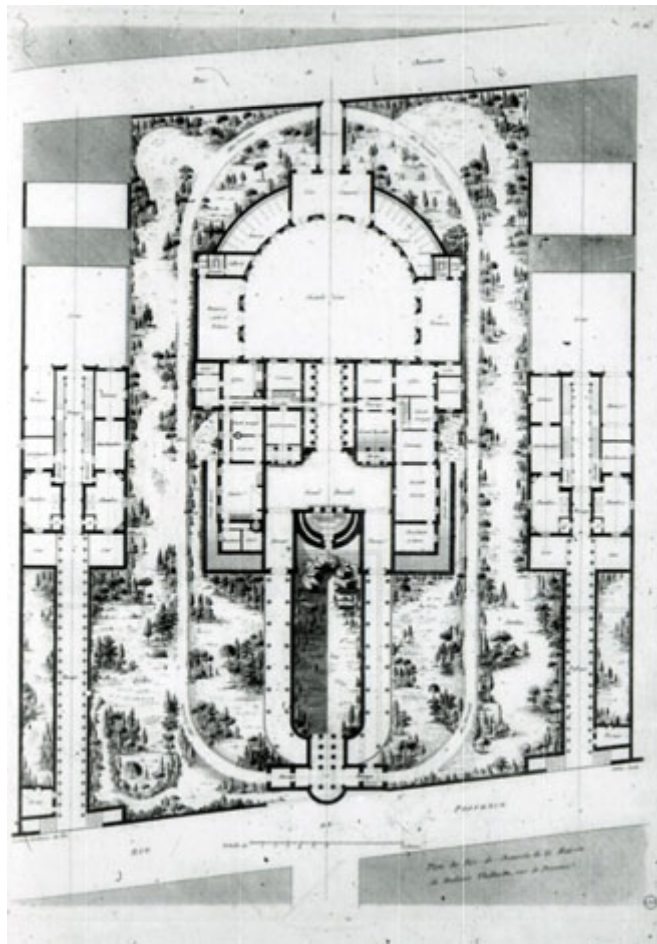
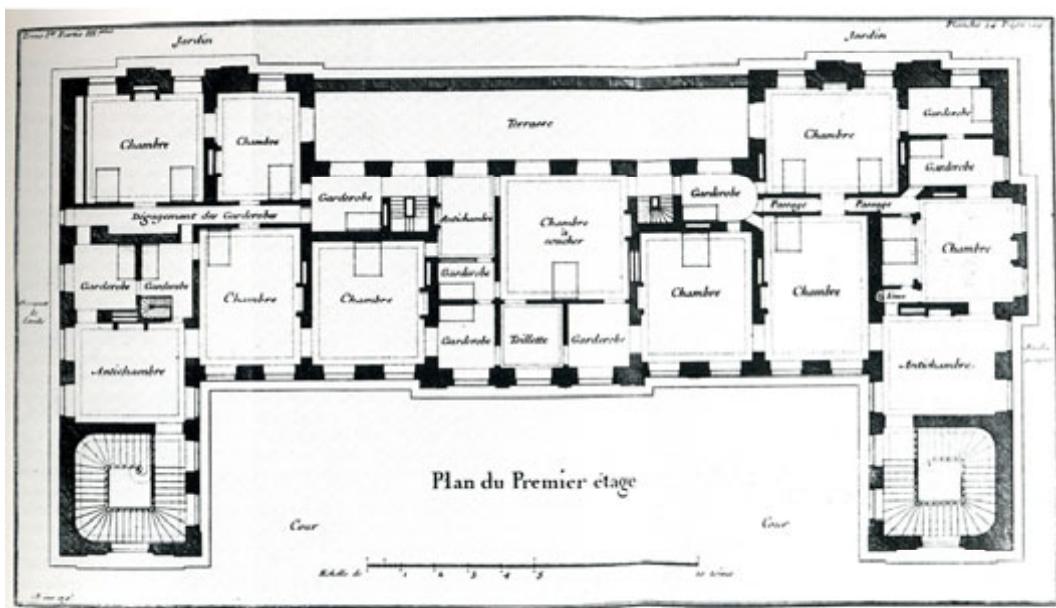
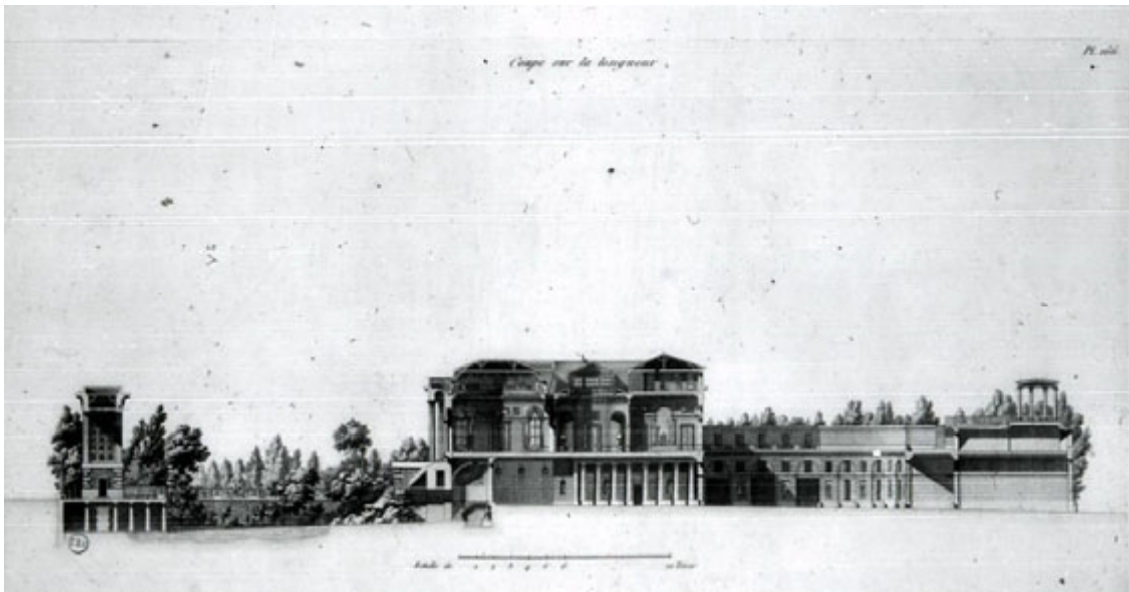


## La composition par suite symétrique

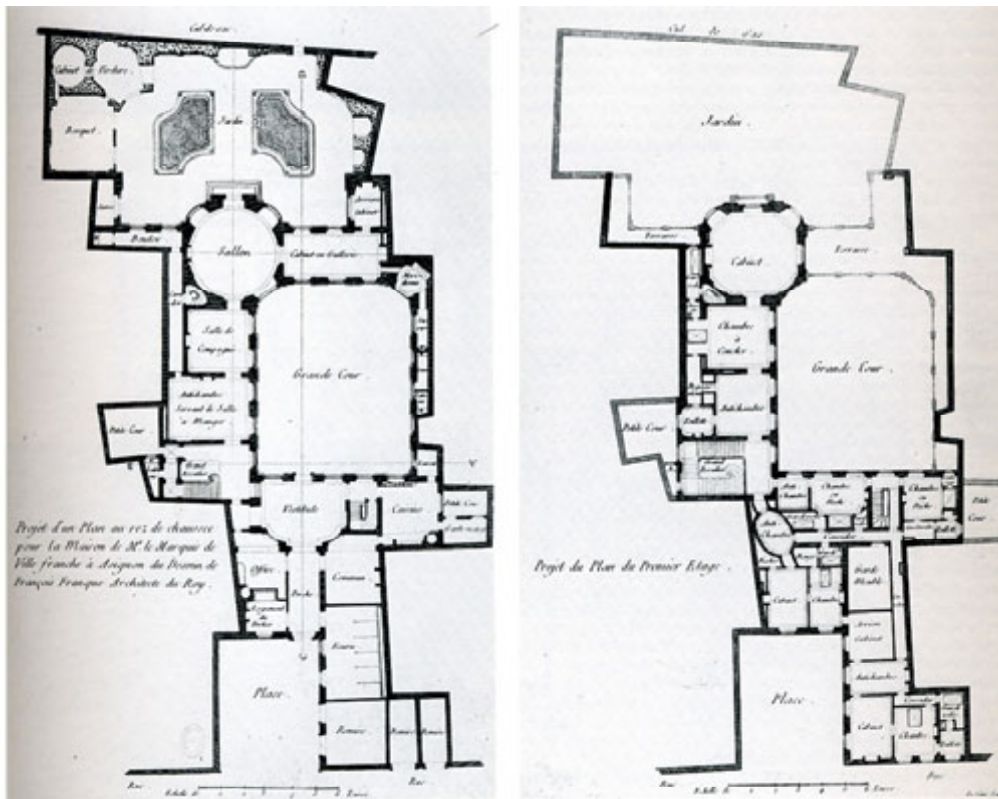


**Claude-Nicolas Ledoux**  
Hôtel Thélusson, Paris, 1778-1779

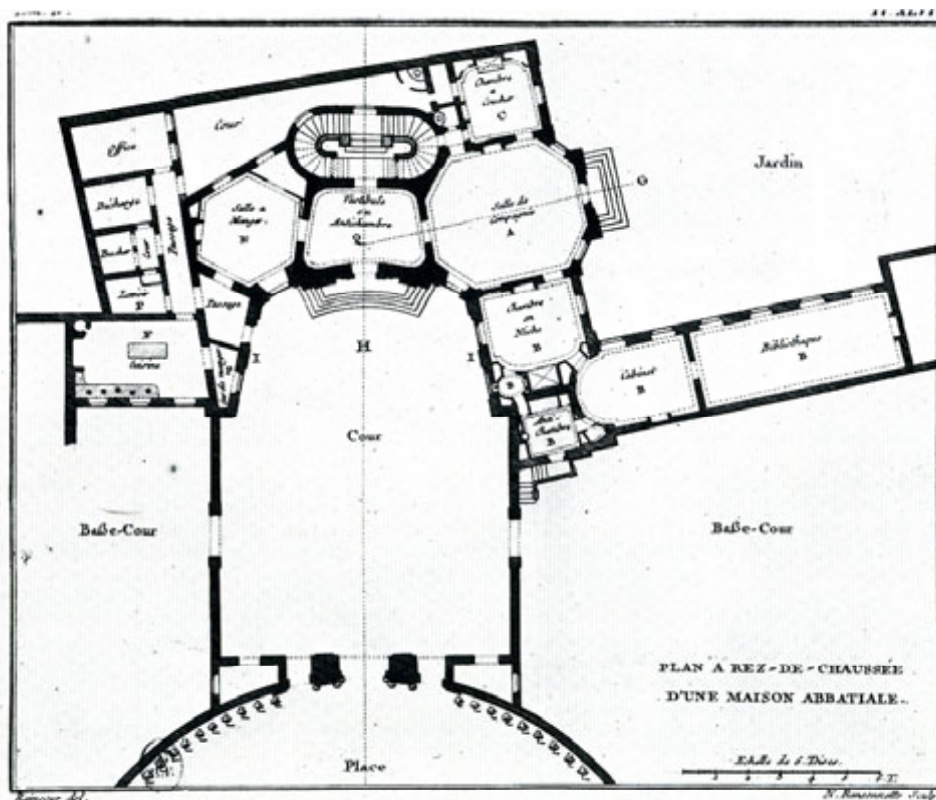




**Jacques-François Blondel**  
*De la Distribution des maisons de plaisance...*, 1737



**François Franque**, Hôtel pour le marquis de Villefranche, extrait de l'*Encyclopédie*, Planches, I, 1762

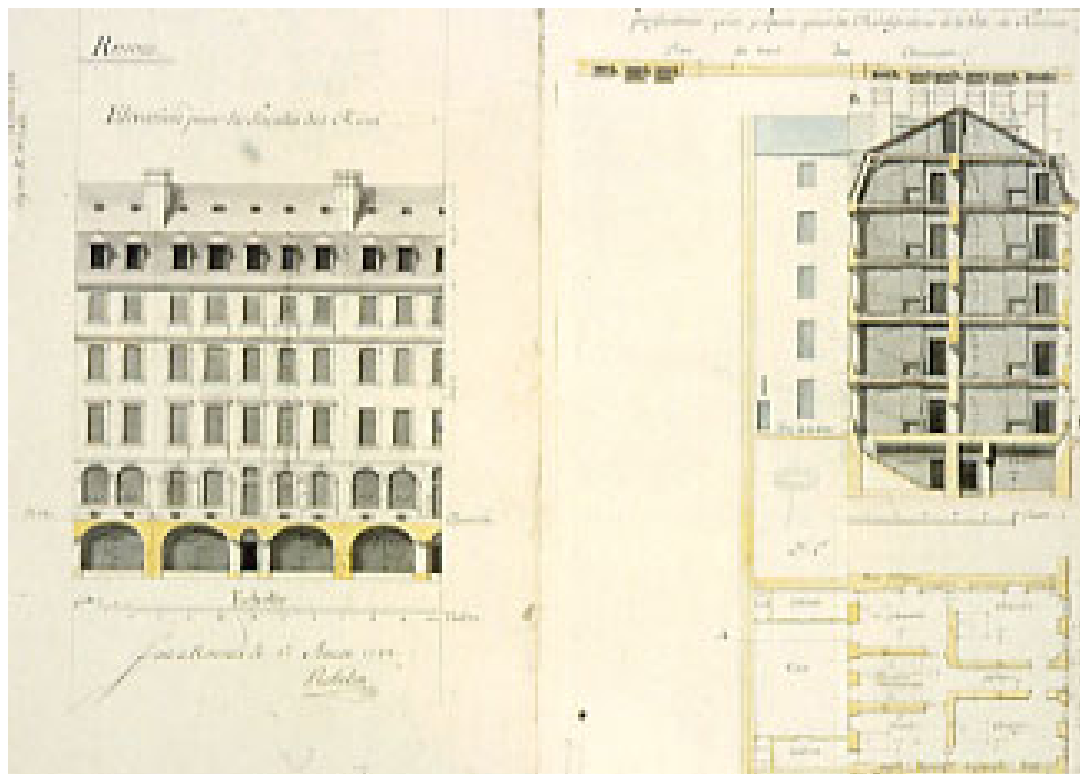


**François Franque**, Maison abbatiale des Prémontés, Villers-Cotterets, extrait de Jacques-François Blondel, *Cours d'architecture*, 1779



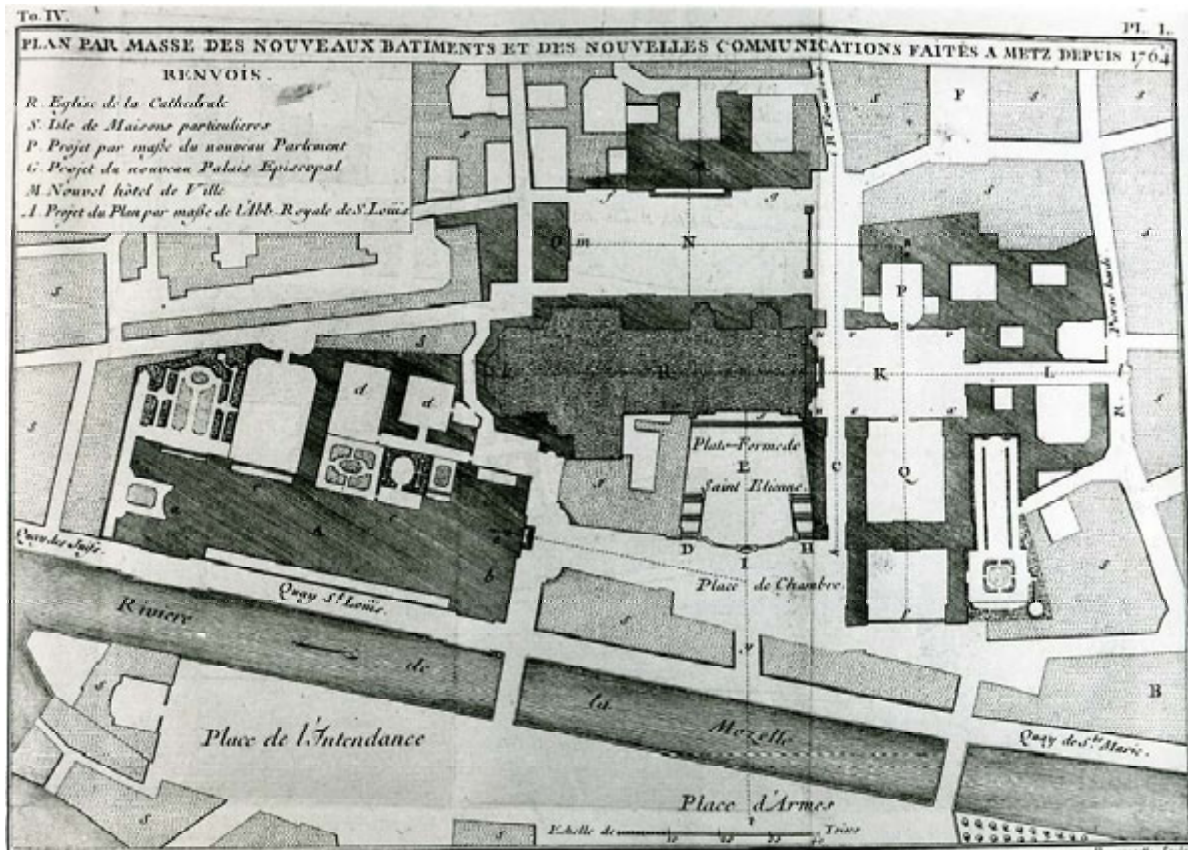
### Rennes

Plan de reconstruction de 1722, après l'incendie qui ravagea le centre de la ville en 1720





Jacques-François Blondel  
Plan d'embellissement de Strasbourg

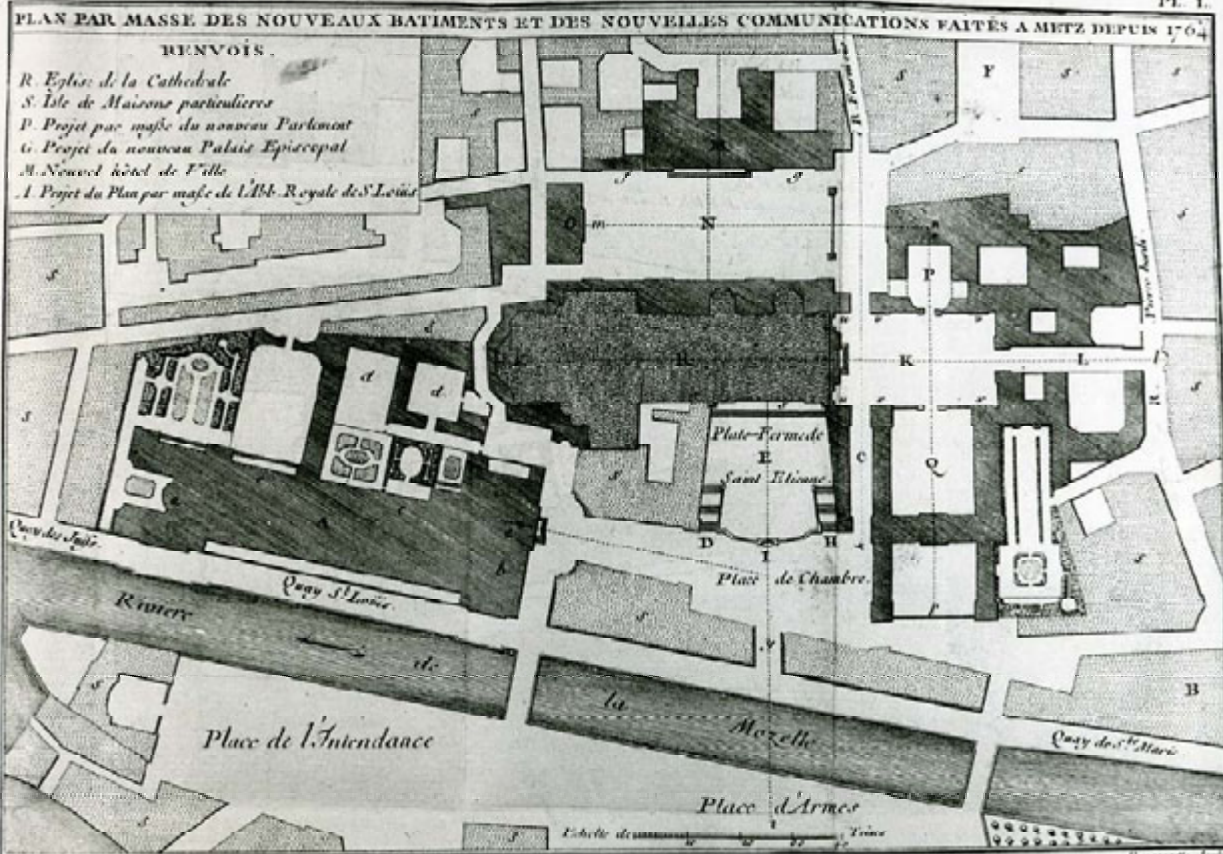


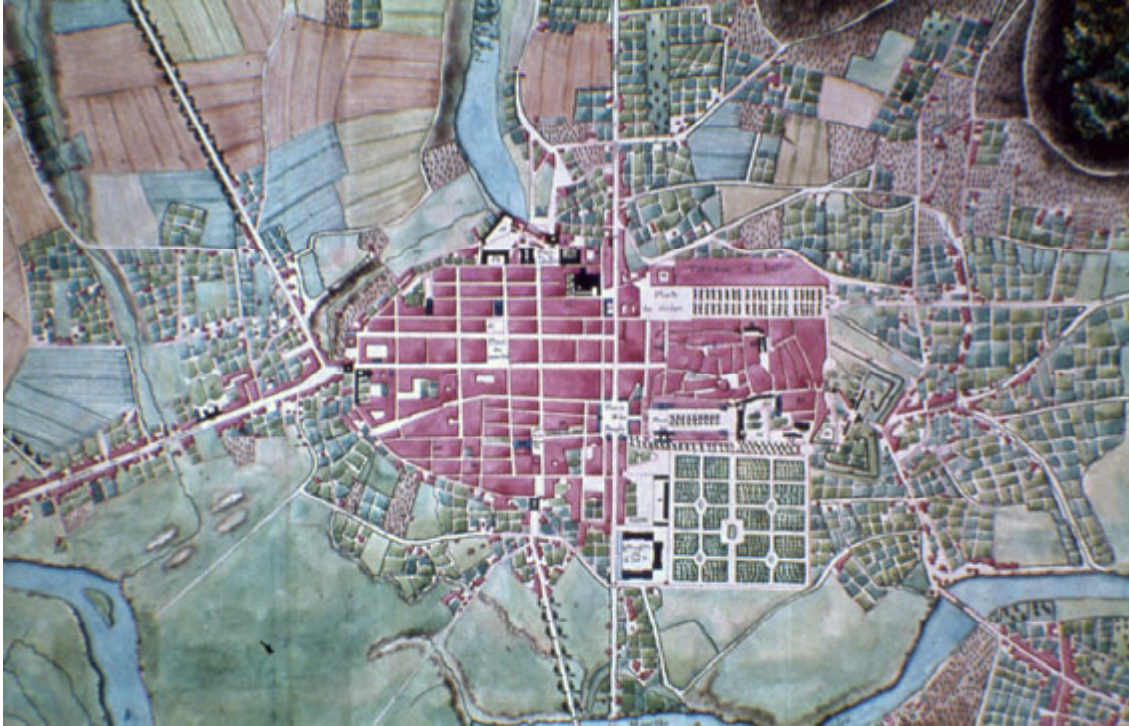
Jacques-François Blondel  
Plan d'embellissement de Metz, 1764



To IV.

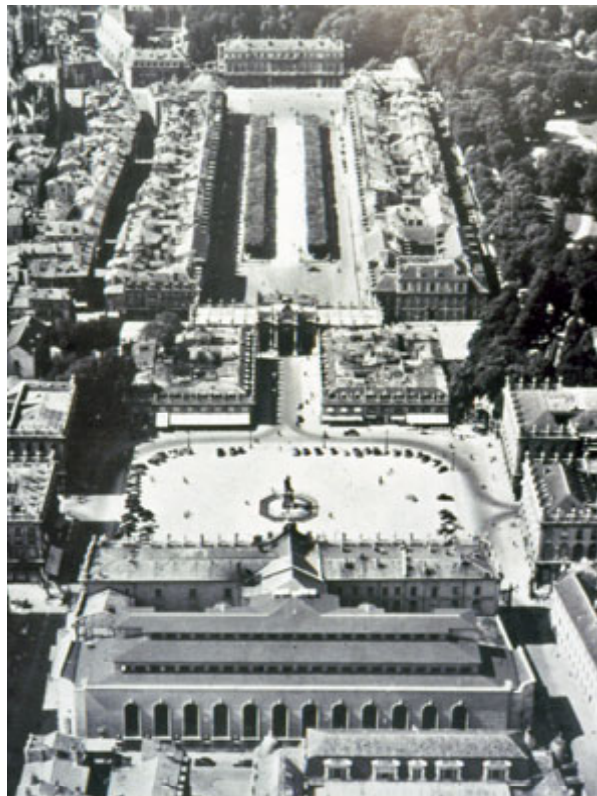
PL. I.



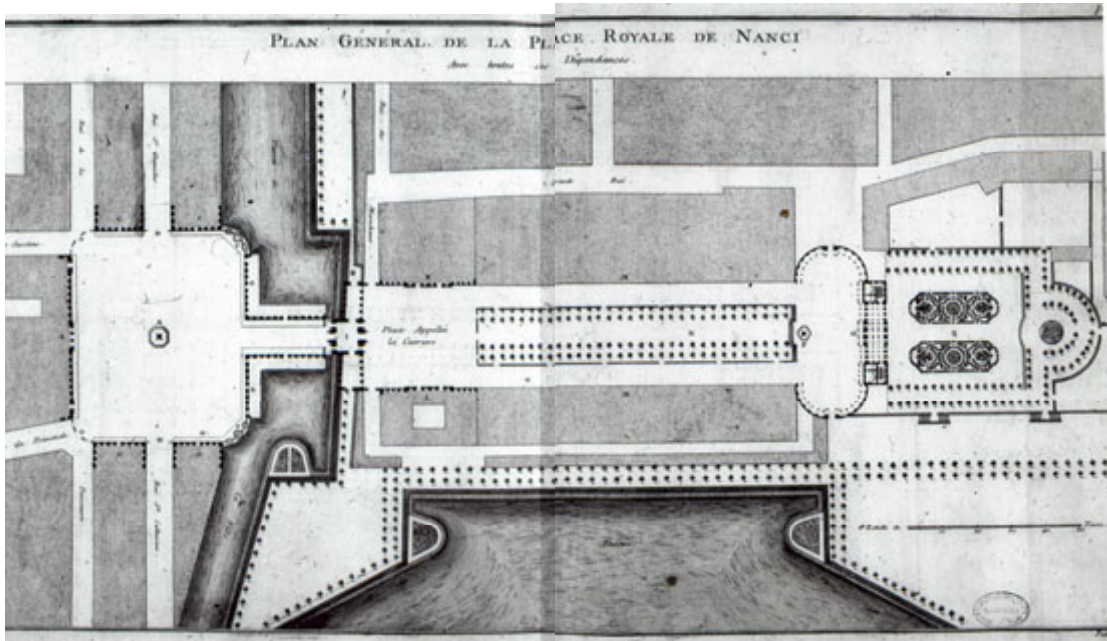


**Nancy**

**Nancy**  
**Place royale**  
A partir de 1752  
Conçue par  
Emmanuel Héré de Corny (1705-1763)



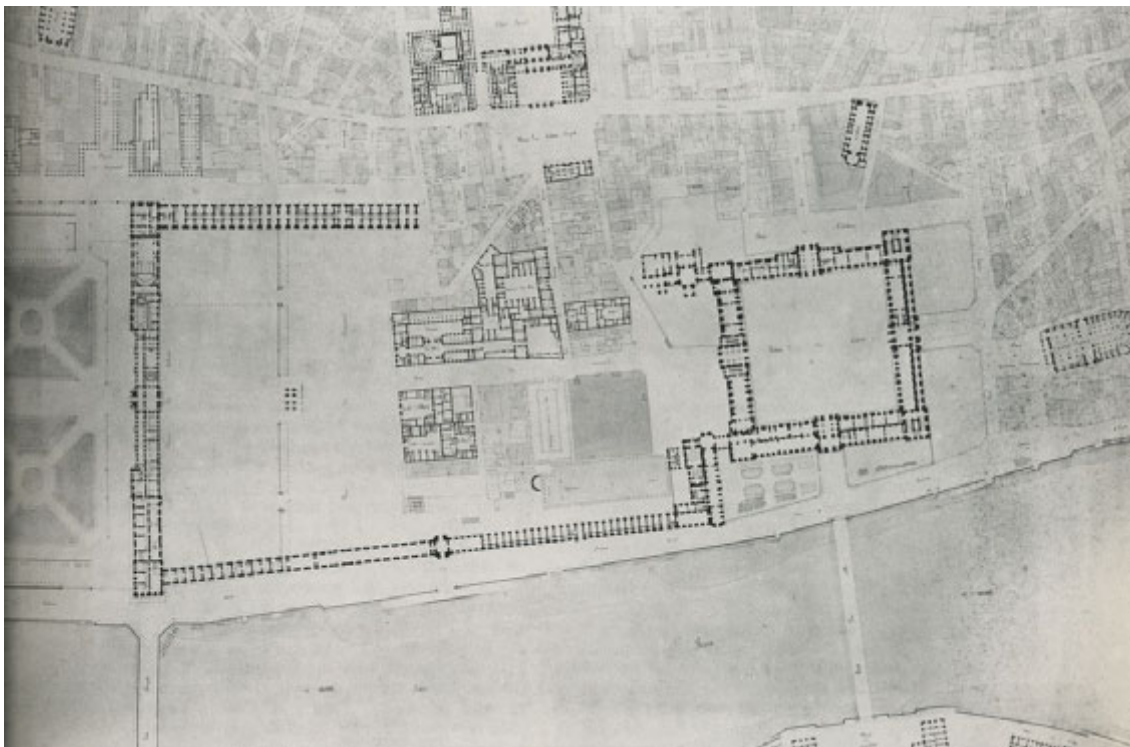


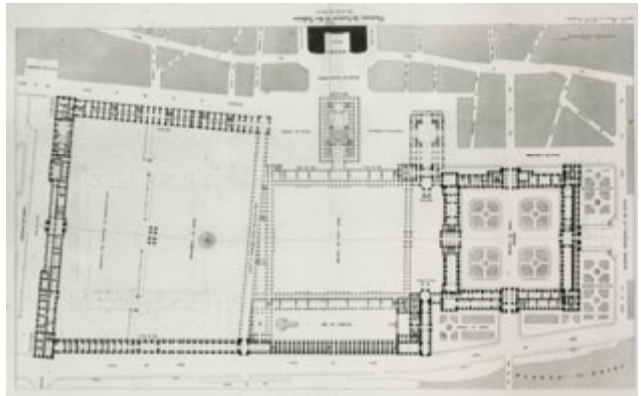
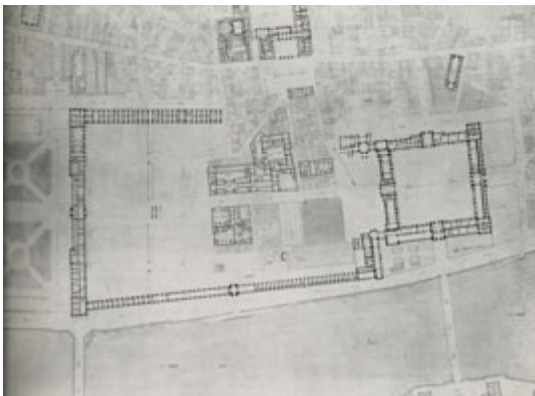
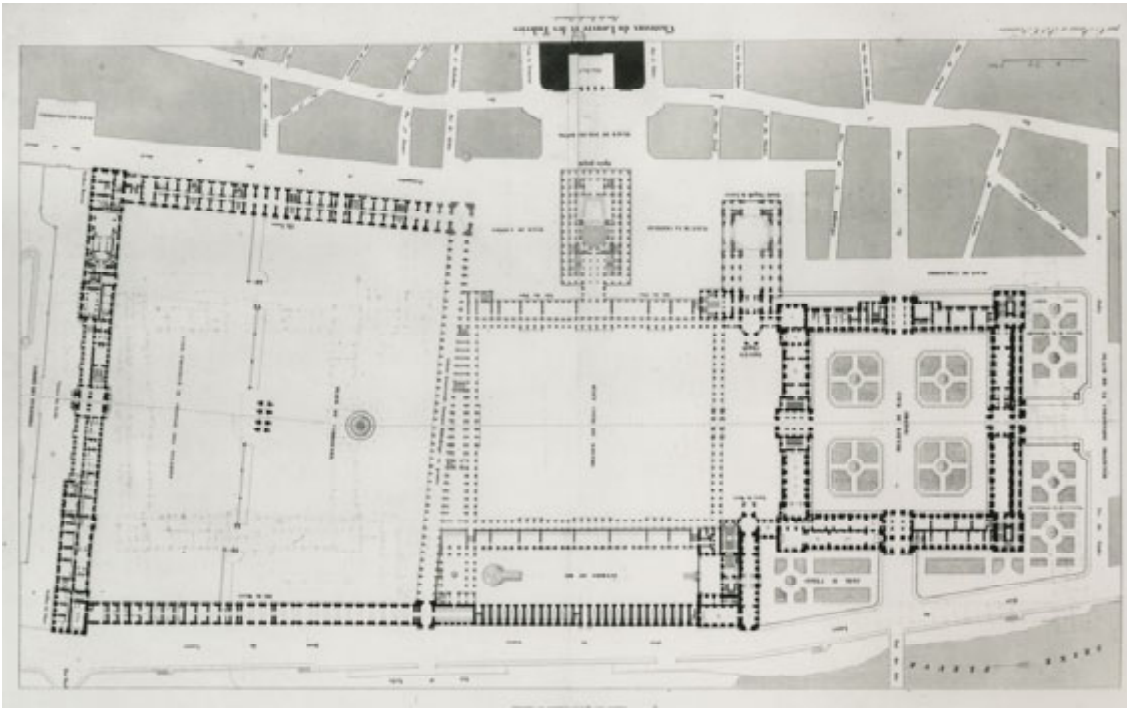


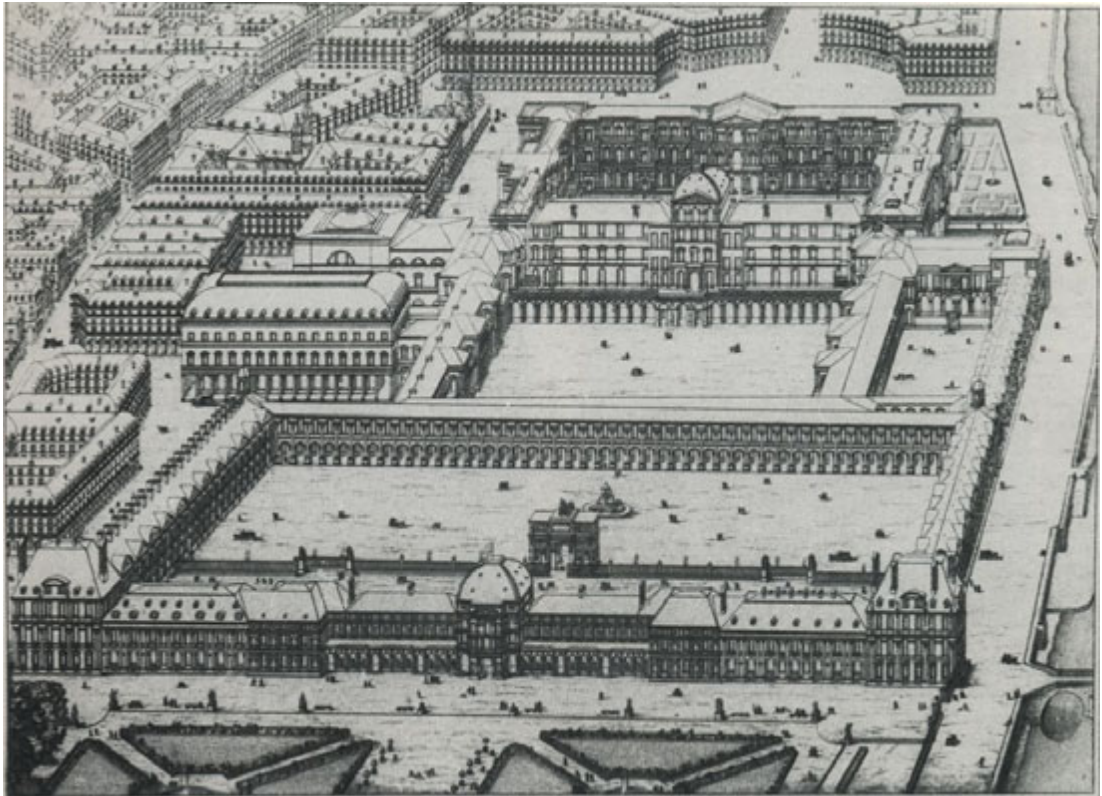
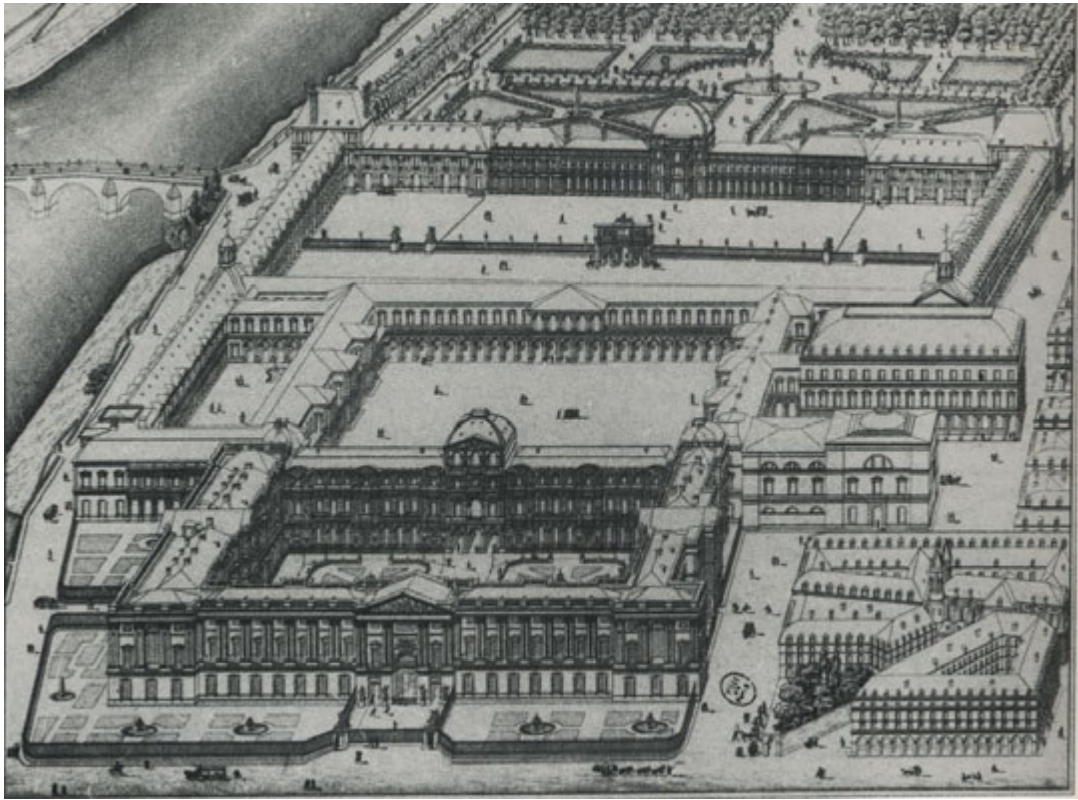


**Charles Percier**  
**Pierre-François-Léonard Fontaine**

Projet de réunion du palais du Louvre et du palais des Tuileries, Paris







**Charles Percier (1764-1838)**  
**Pierre-François-Léonard Fontaine (1762-1853)**

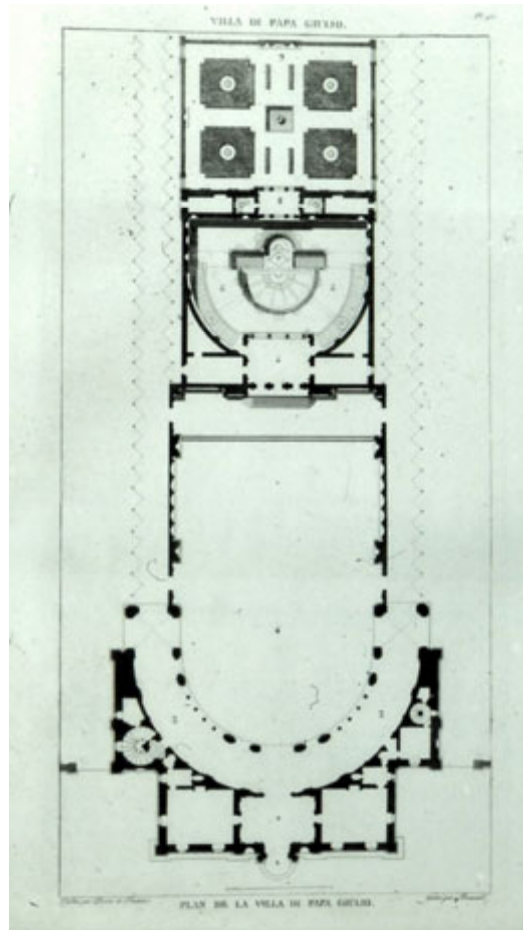
1785 - P.-F.-L. Fontaine est Second Grand Prix de Rome (une chapelle sépulcrale).

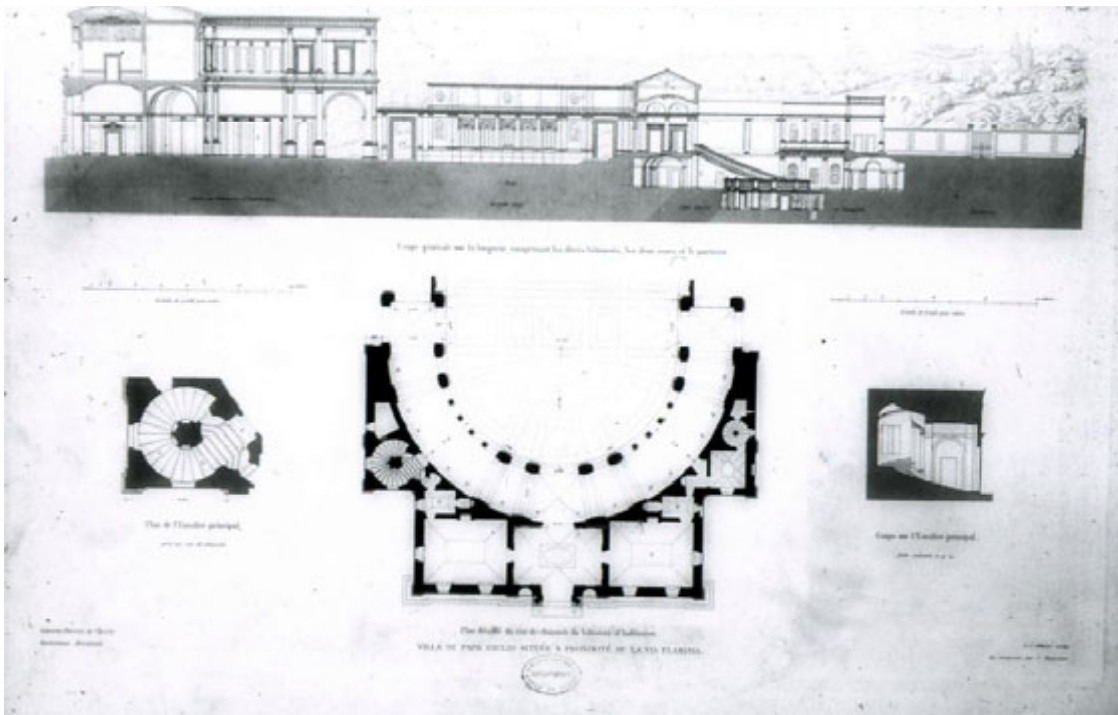
1786 - Ch. Percier est Premier Grand Prix de Rome (un édifice à rassembler les académies).

1786-1791 - Ch. Percier est à Rome avec P.-F.-L. Fontaine (qui en revient en 1790) où ils dessinent et relèvent de nombreux édifices.

*Choix des plus célèbres maisons de plaisance de Rome et de ses environs, Paris, 1809.*





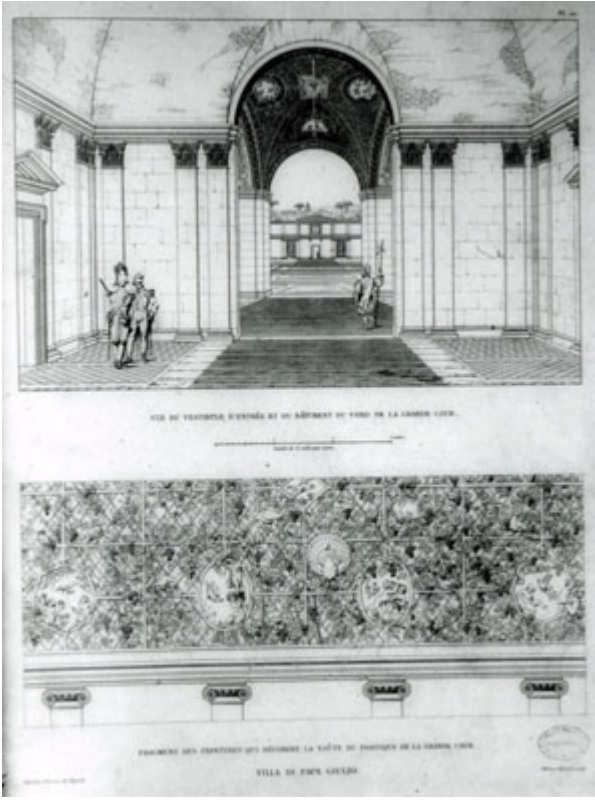


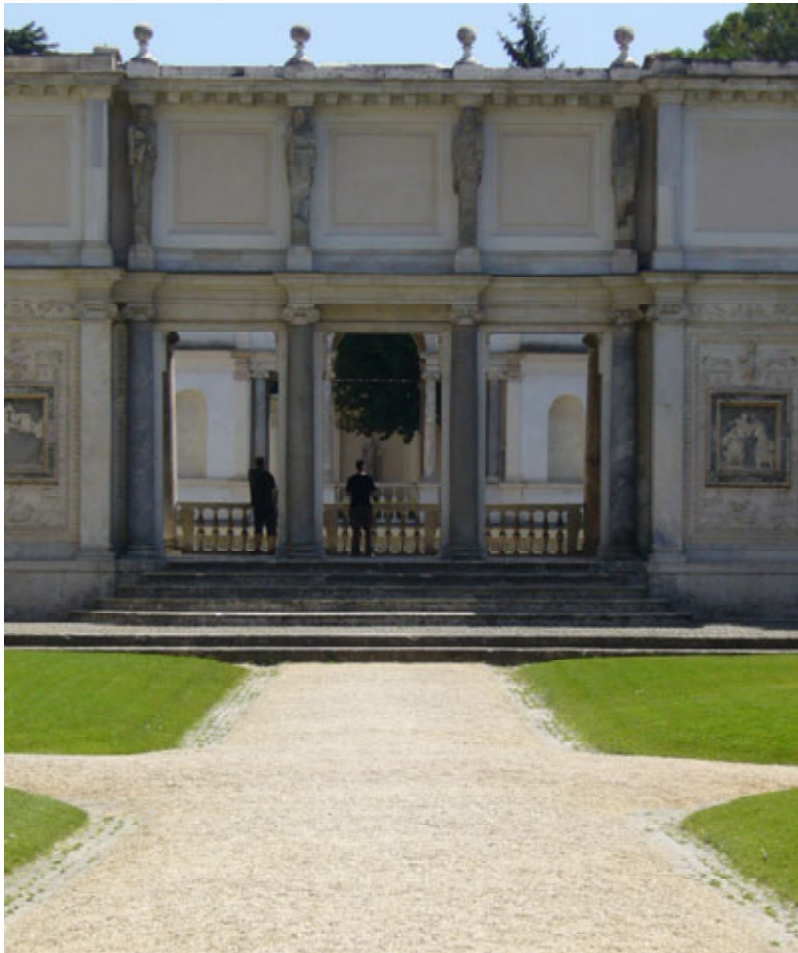


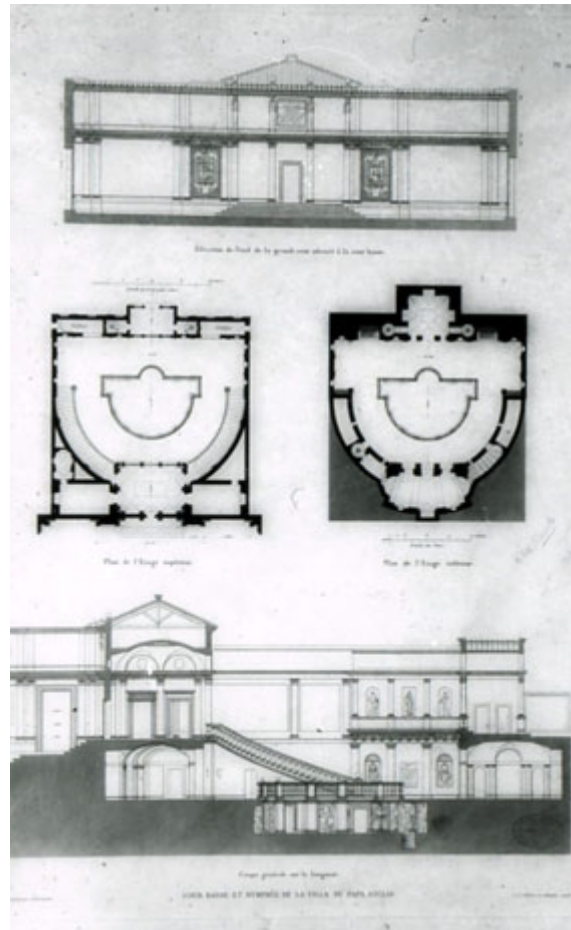








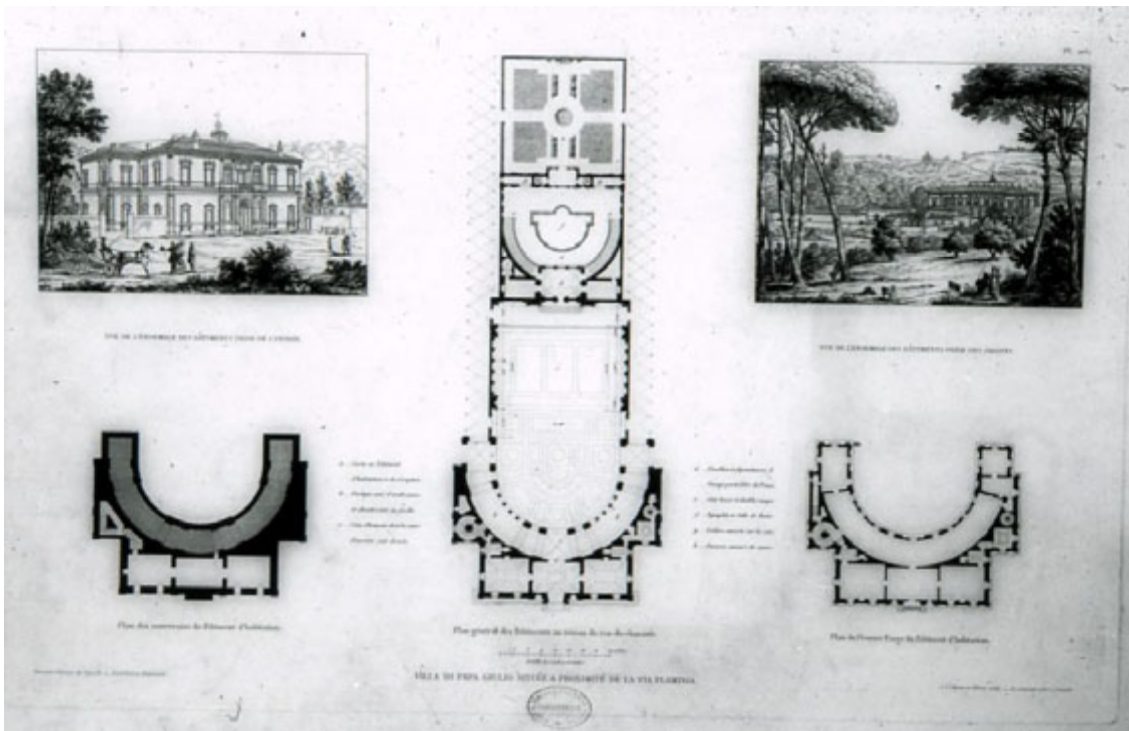
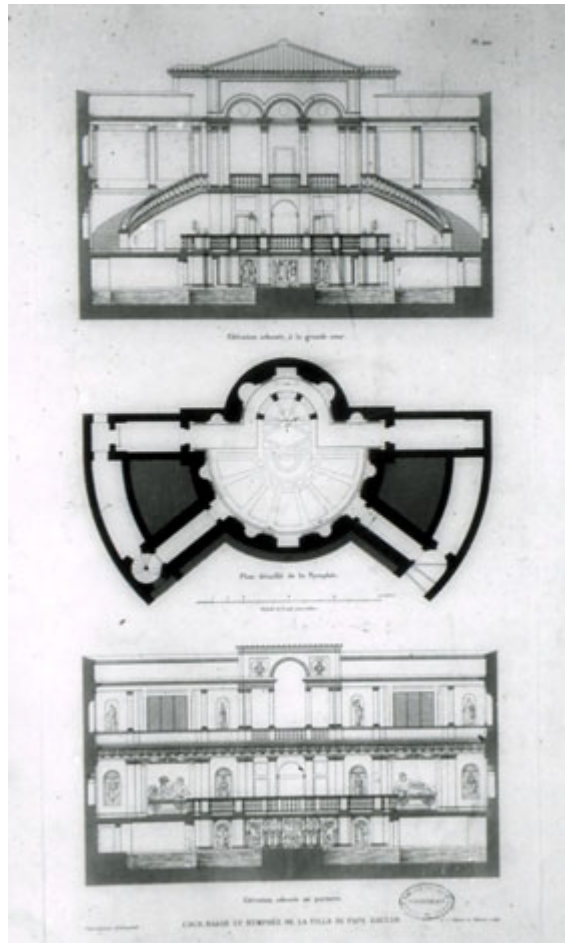










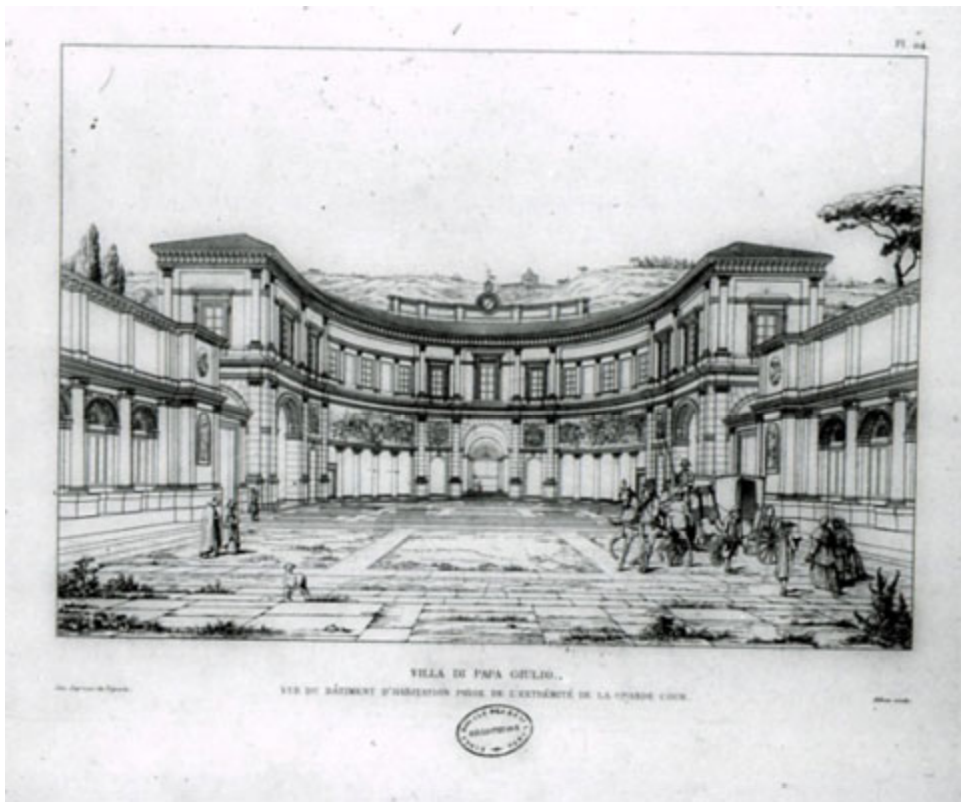






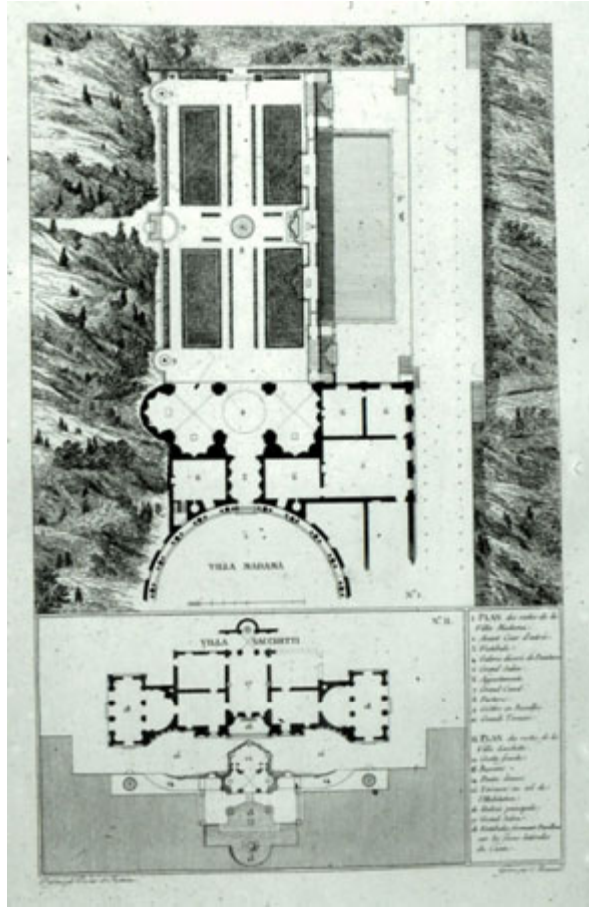
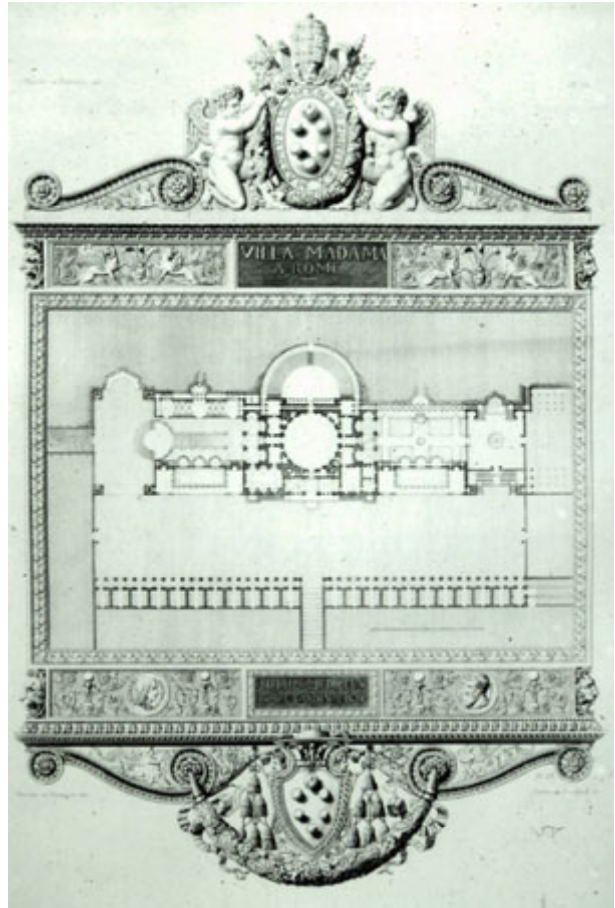






"(...) la symétrie et l'ordonnance sont les premières conditions de l'architecture"  
Pierre-François-Léonard Fontaine, *Journal*, 5 janvier 1808







VILLA MADAMA.



*Disegno per il Cavaliere di Montoni.*

*Scult. e l'Arch. fatto per il Conte di S. Pietro.*

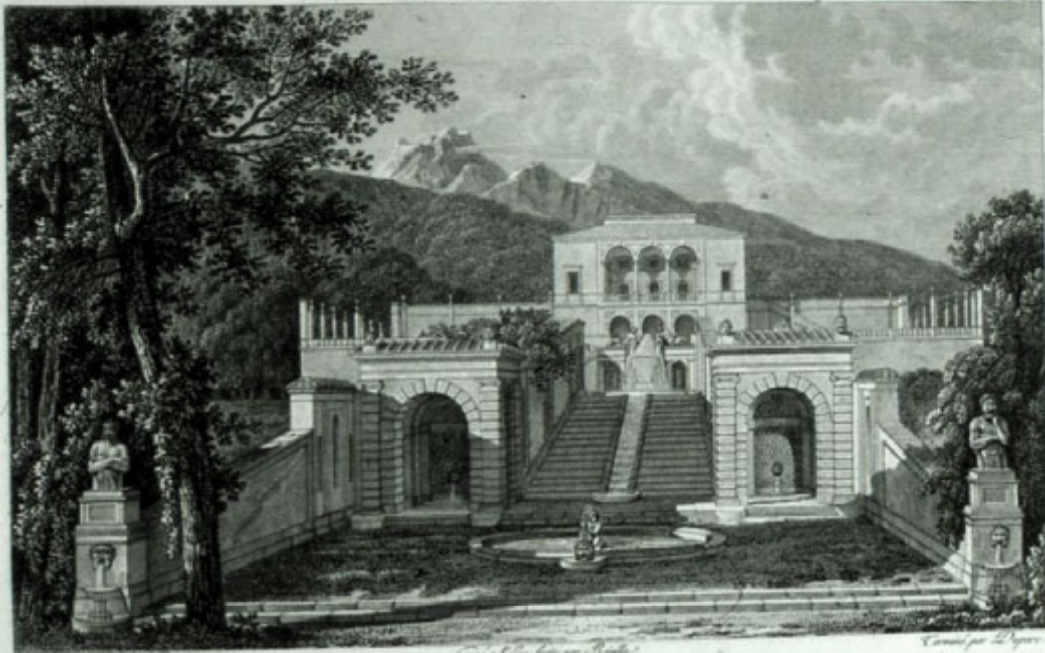
*Cominciato per C. Noddi.*

VUE DE LA GRANDE LOGE DU CASIN DE LA VILLA MADAMA.

*vue prise de la Barrière sur la Cassine.*

PALAZZUOLA DI CAPRAROLA.

Pl. 12



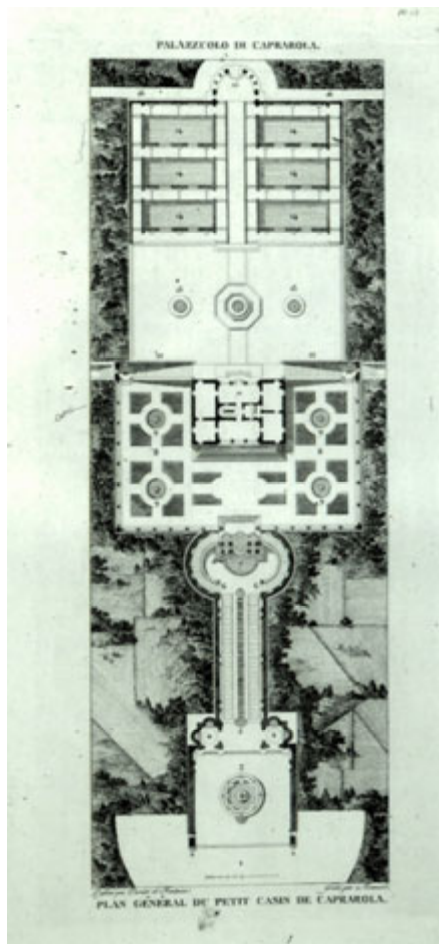
*Disegno per il Cavaliere di Montoni.*

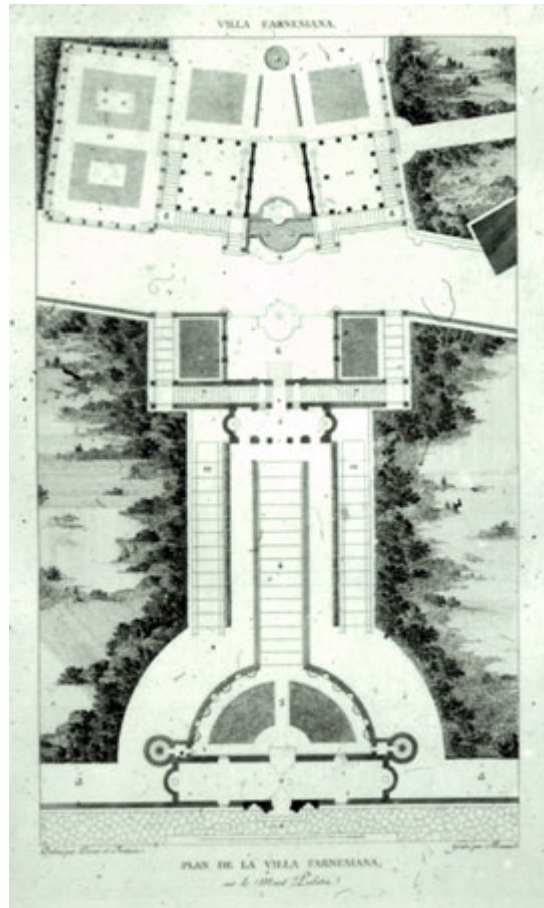
*Scult. e l'Arch. fatto per il Conte.*

*Cominciato per il Signore.*

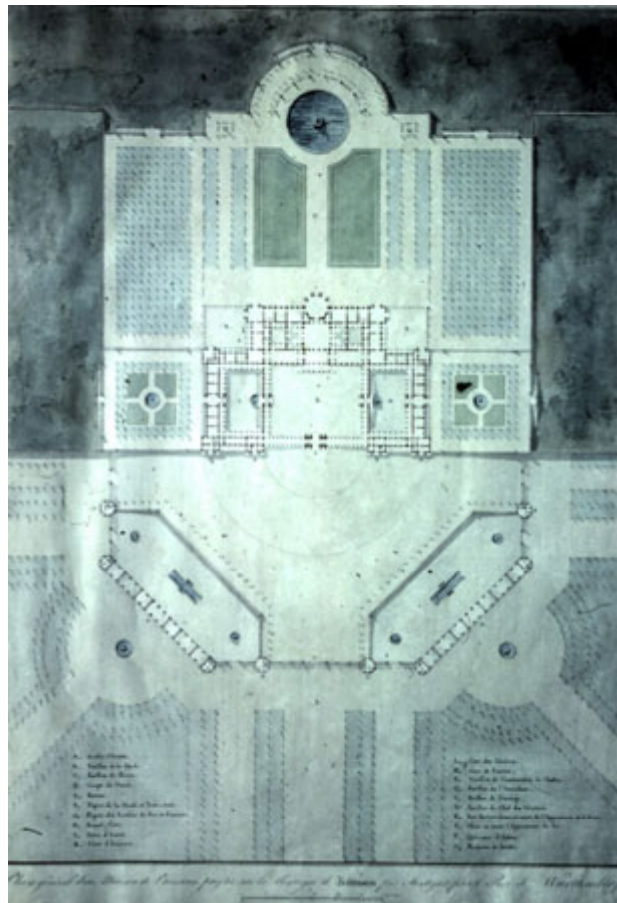
VUE GÉNÉRALE DU PETIT CASIN DE CAPRAROLA,

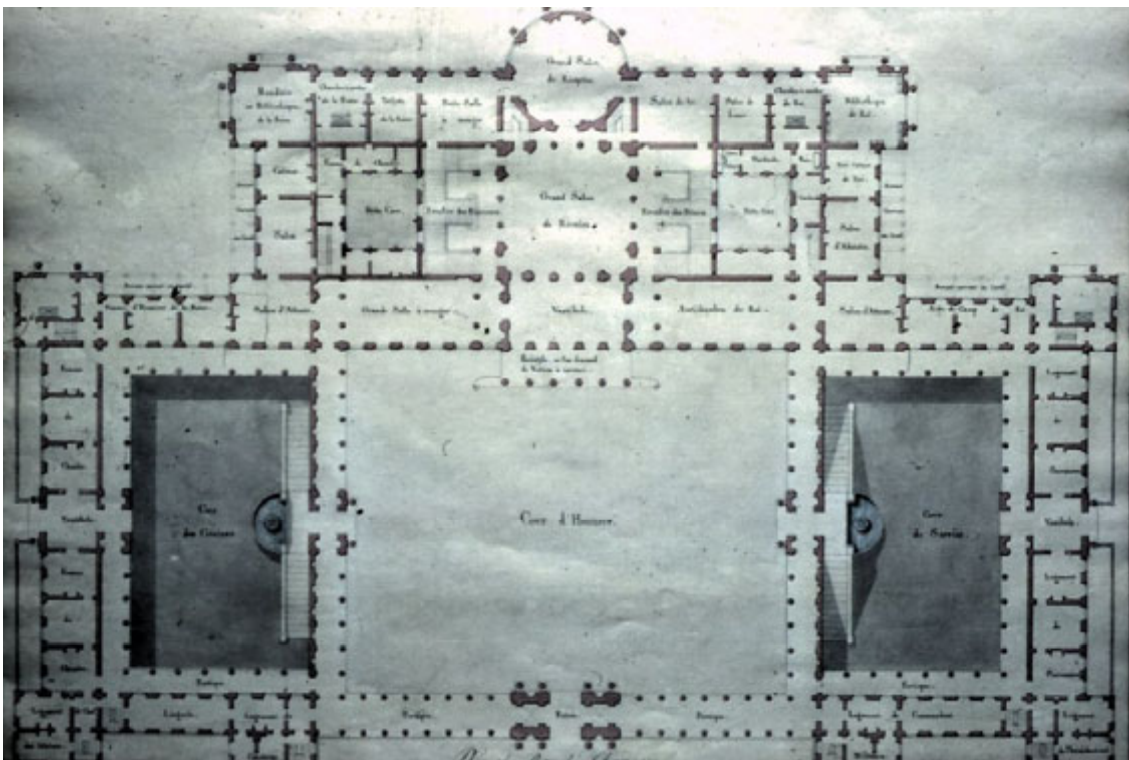
*vue prise de celle de l'entrée.*





**P.-L.-F. Fontaine**  
 Maison de plaisance pour  
 le roi de Wurtemberg  
 Près de Stuttgart  
 1819



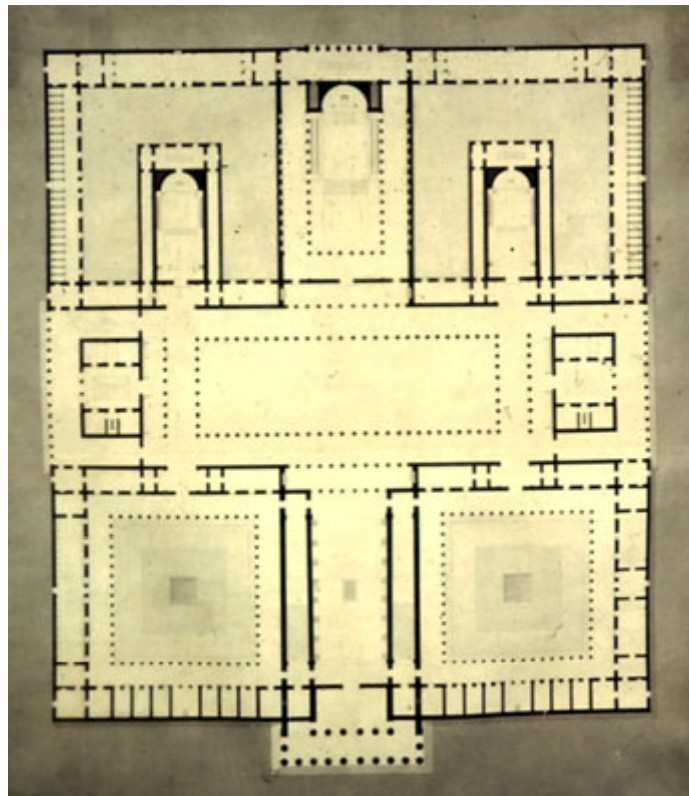




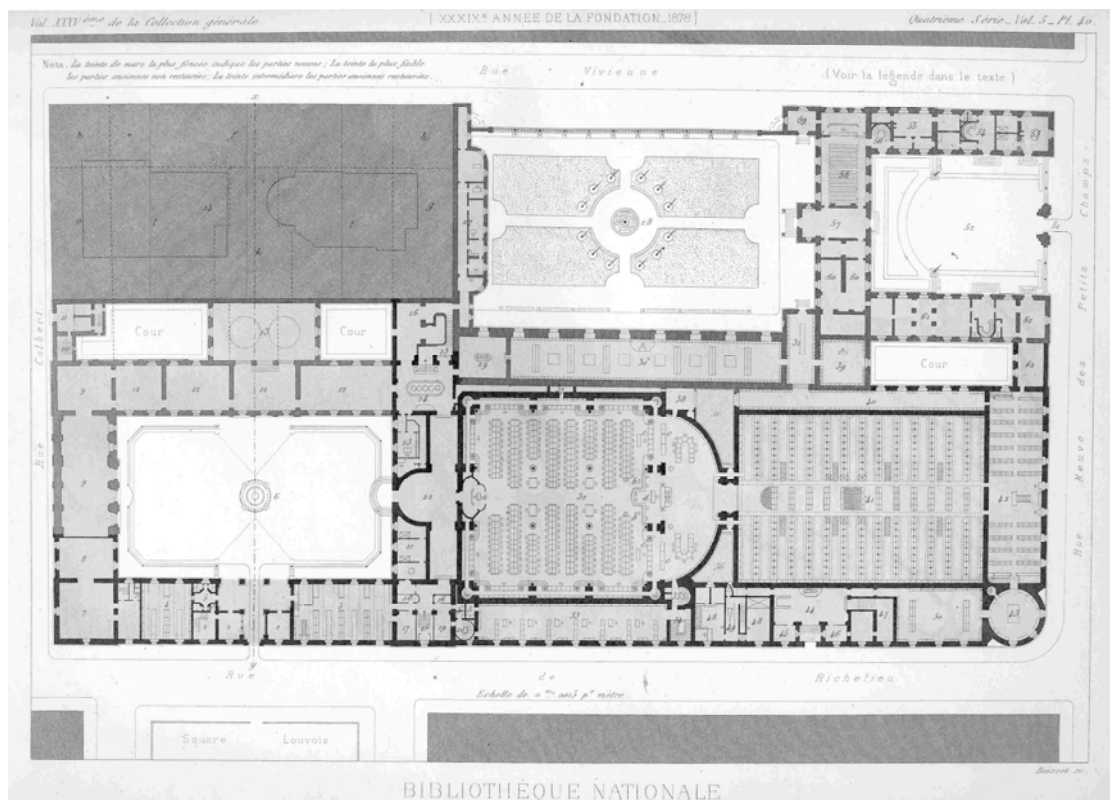
**Henri Labrouste (1801-1875)**

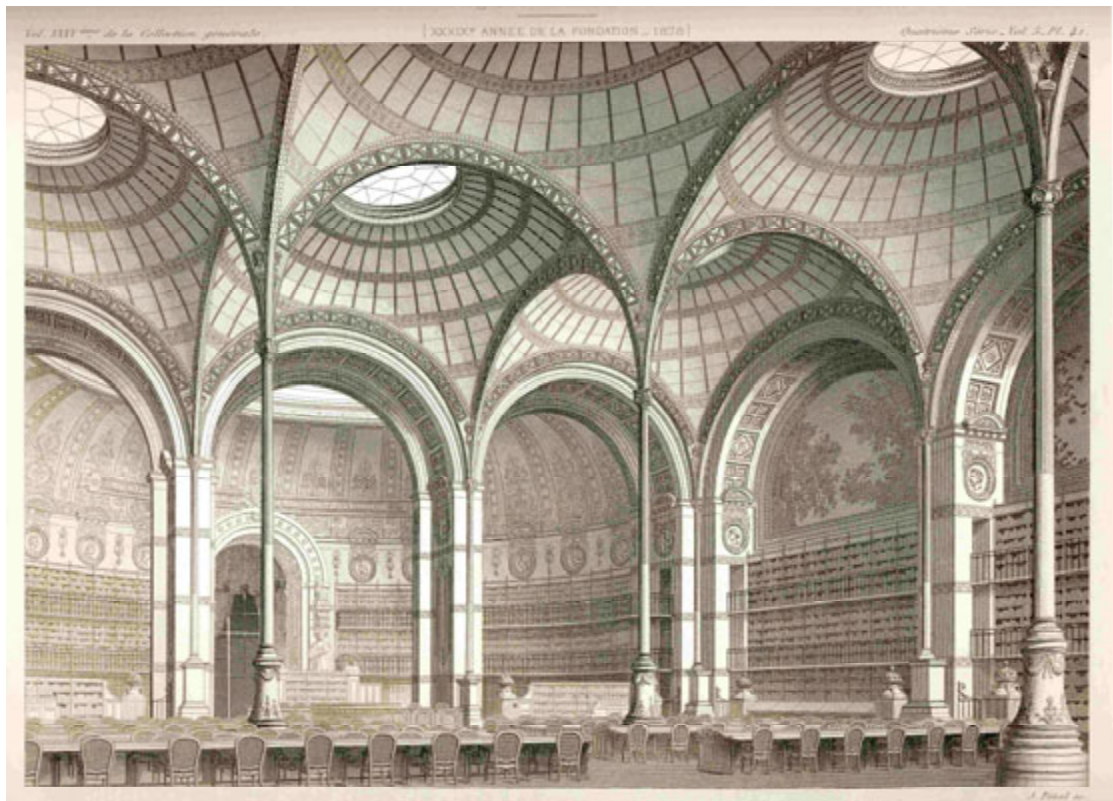


Un tribunal de cassation  
Premier grand prix de Rome,  
1824

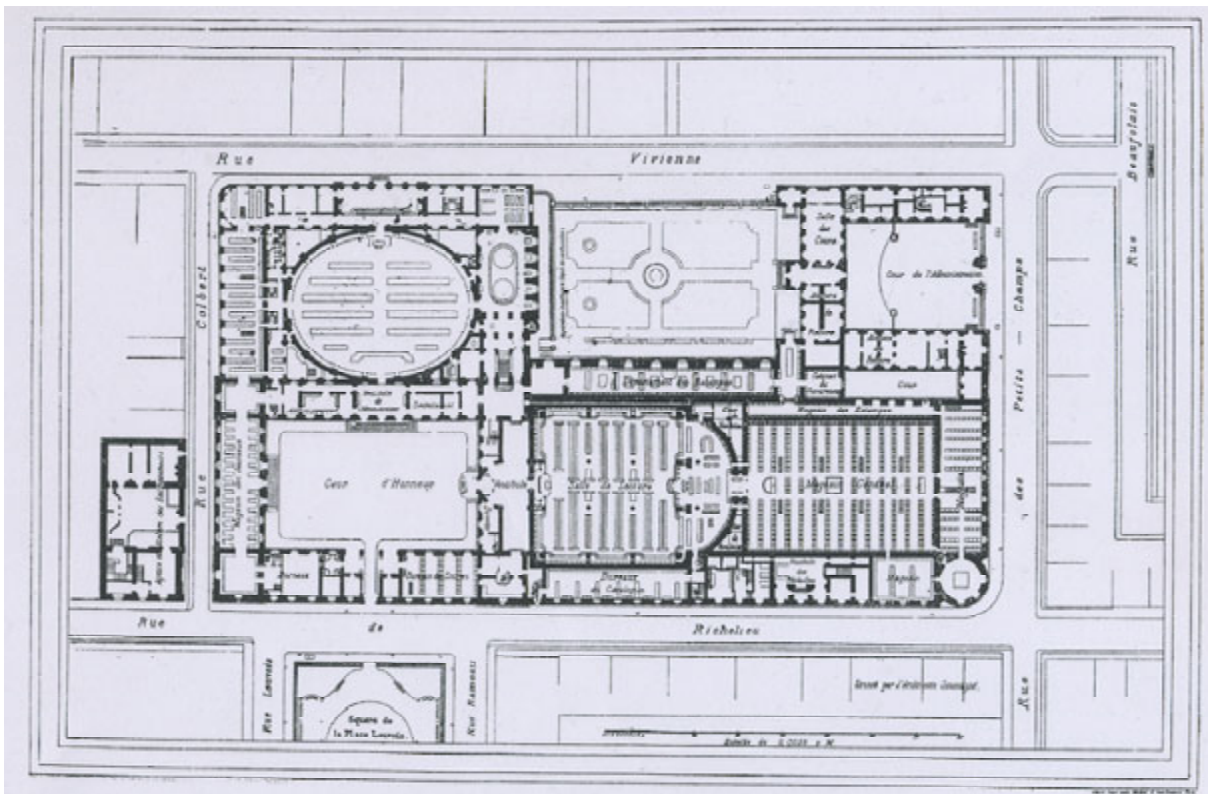


Bibliothèque nationale  
Paris  
A partir de 1854

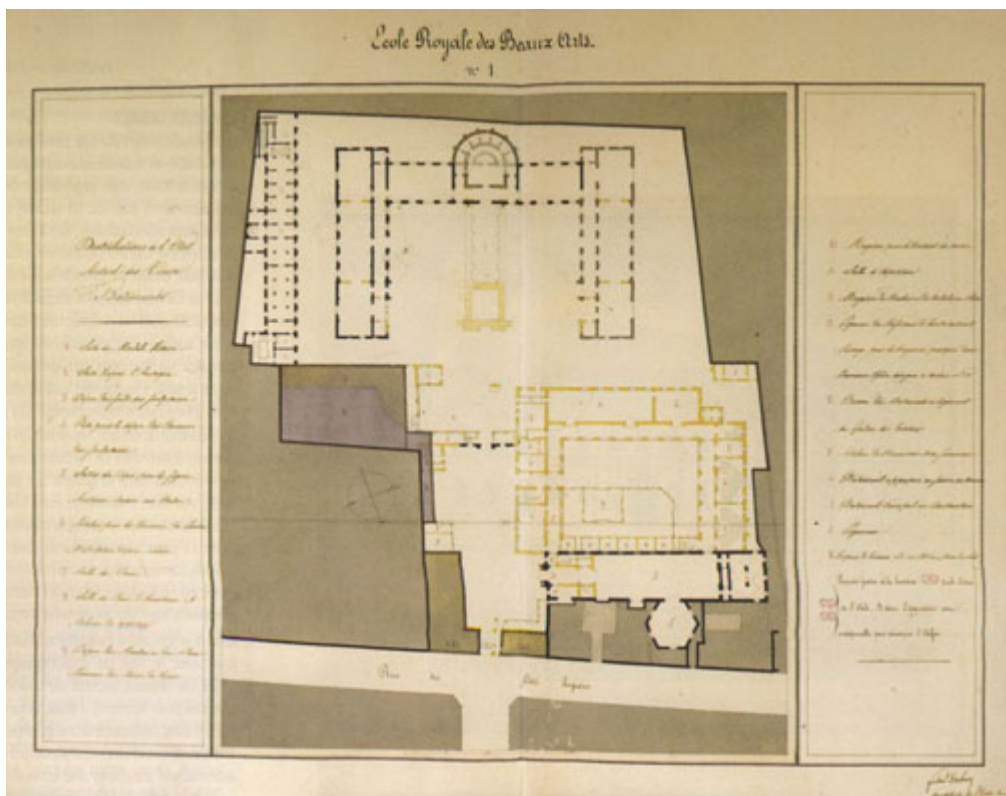








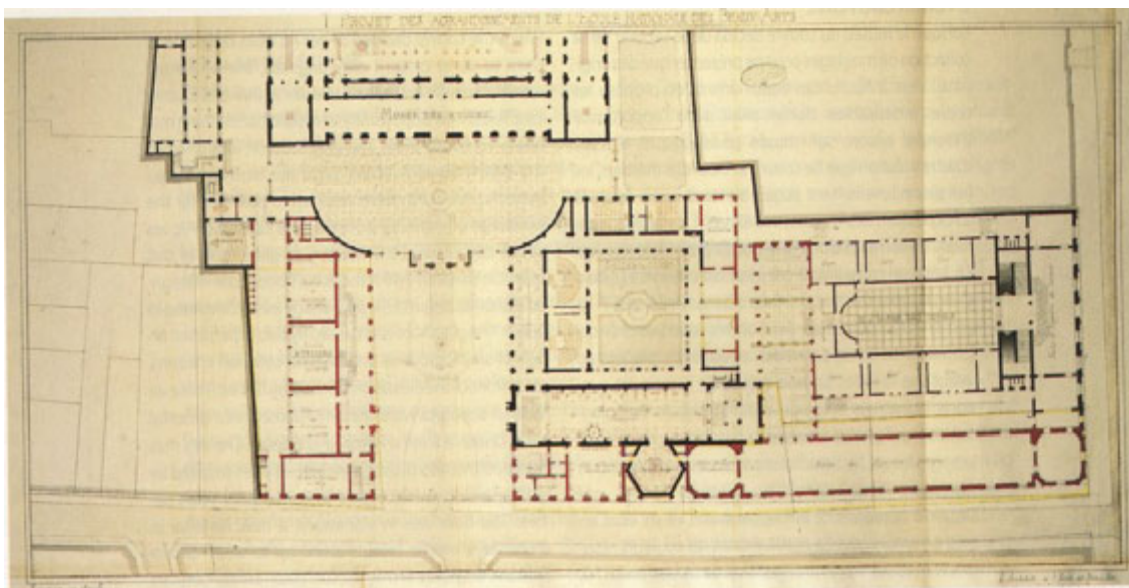
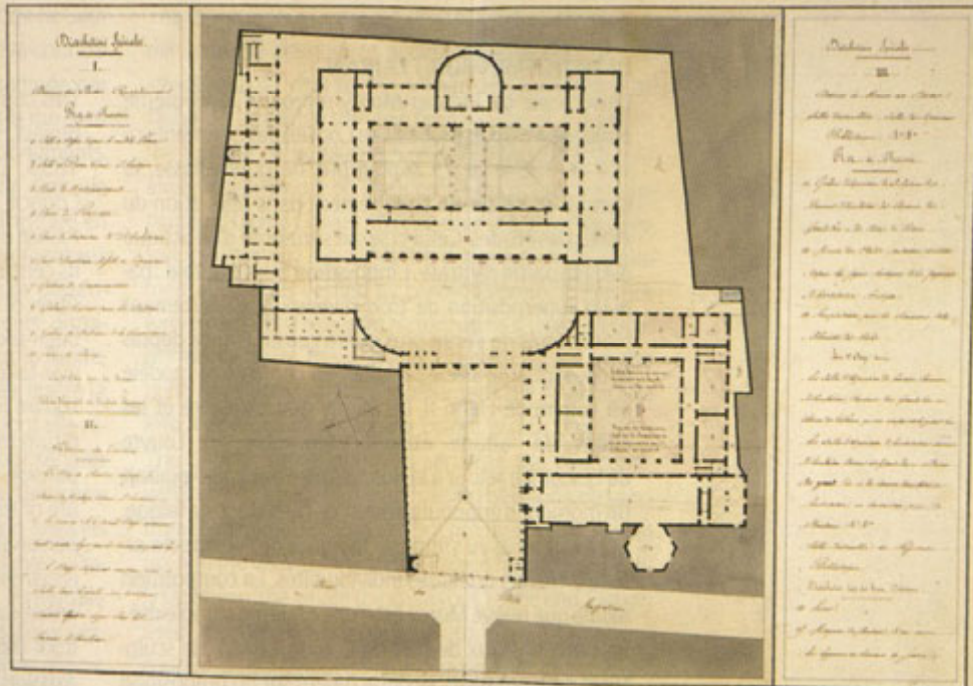
# Félix Duban (1796-1871)



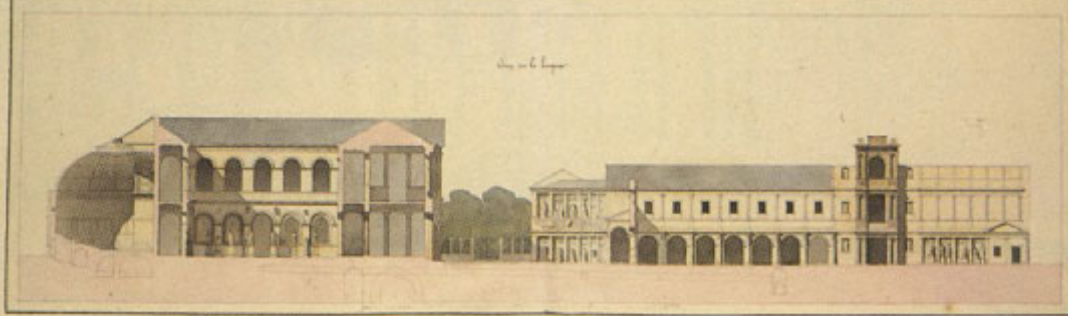
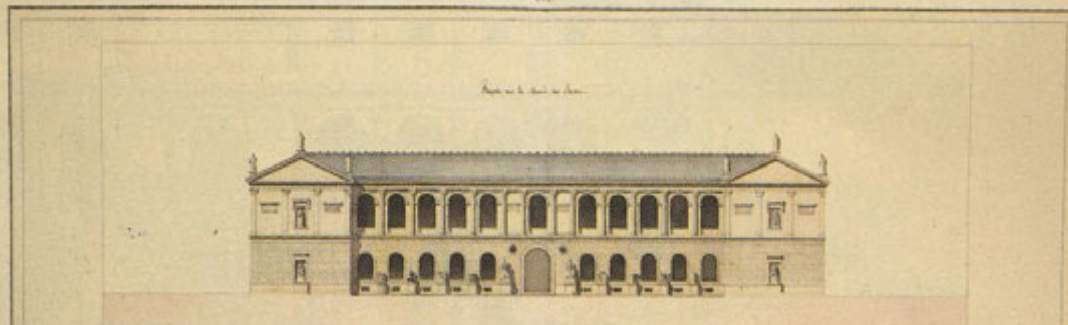
Ecole des beaux-arts, Paris  
A partir de 1832

Ecole Royale des Beaux Arts.

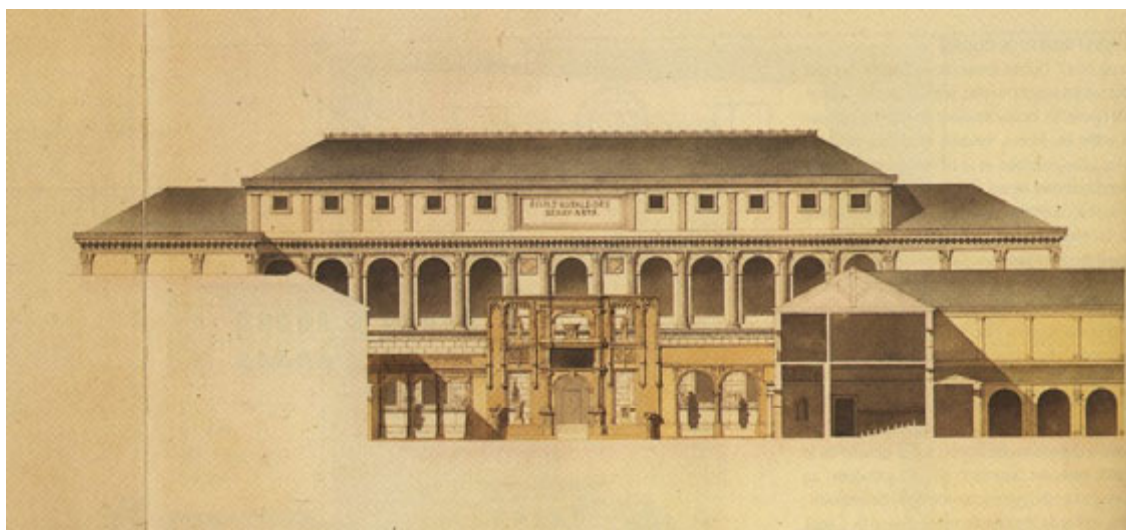
173

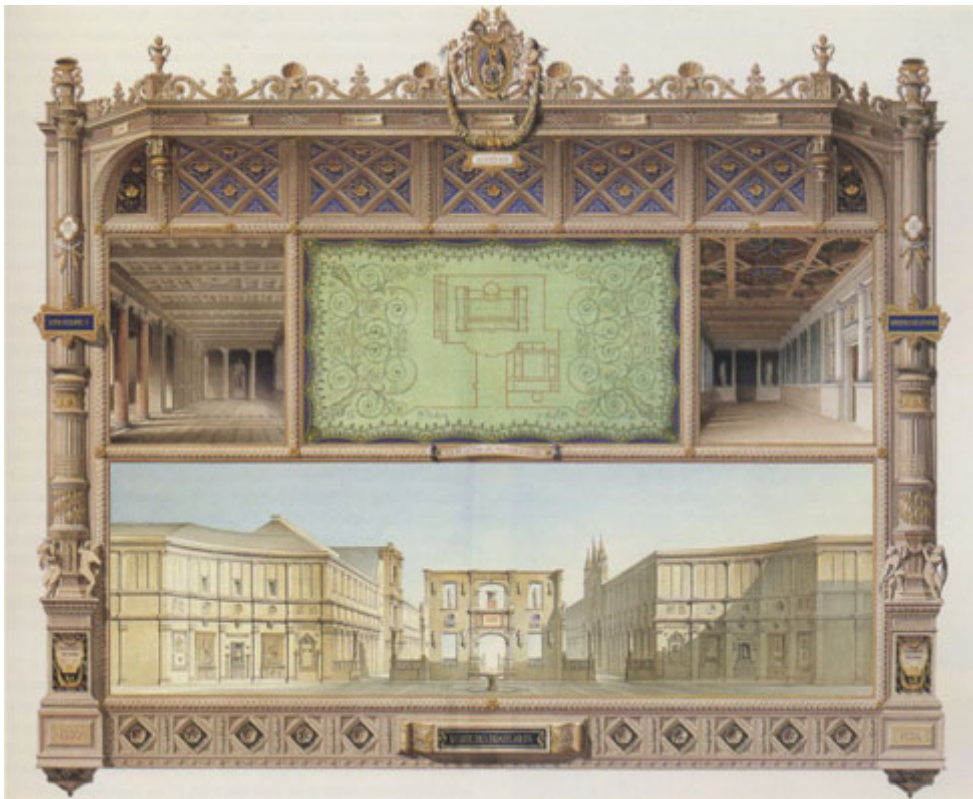
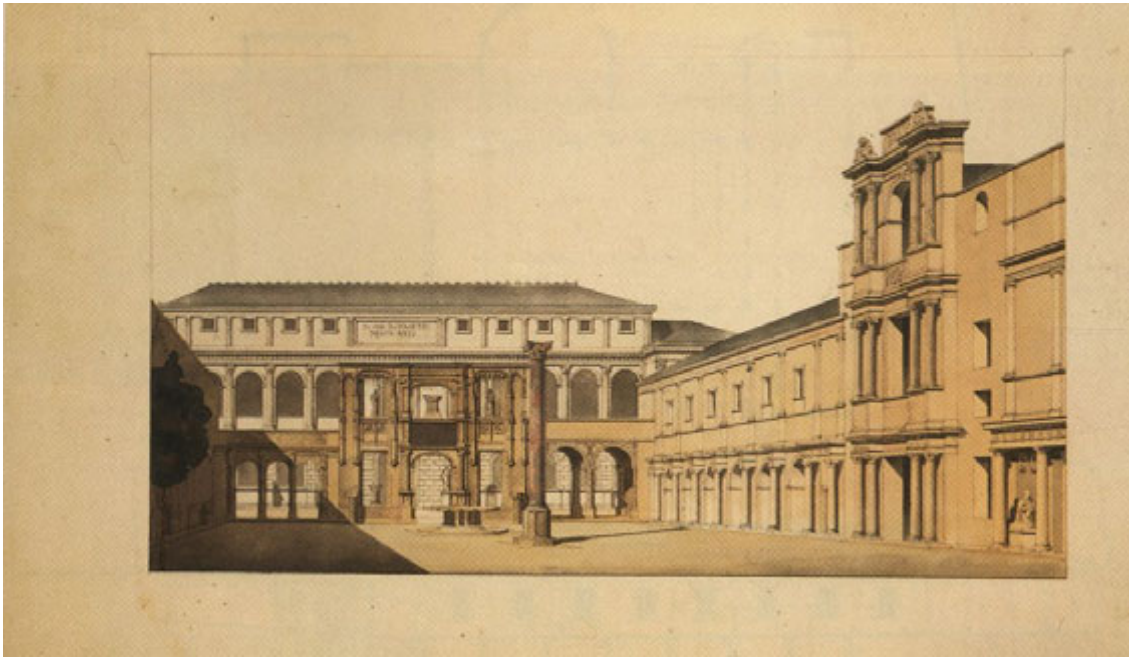


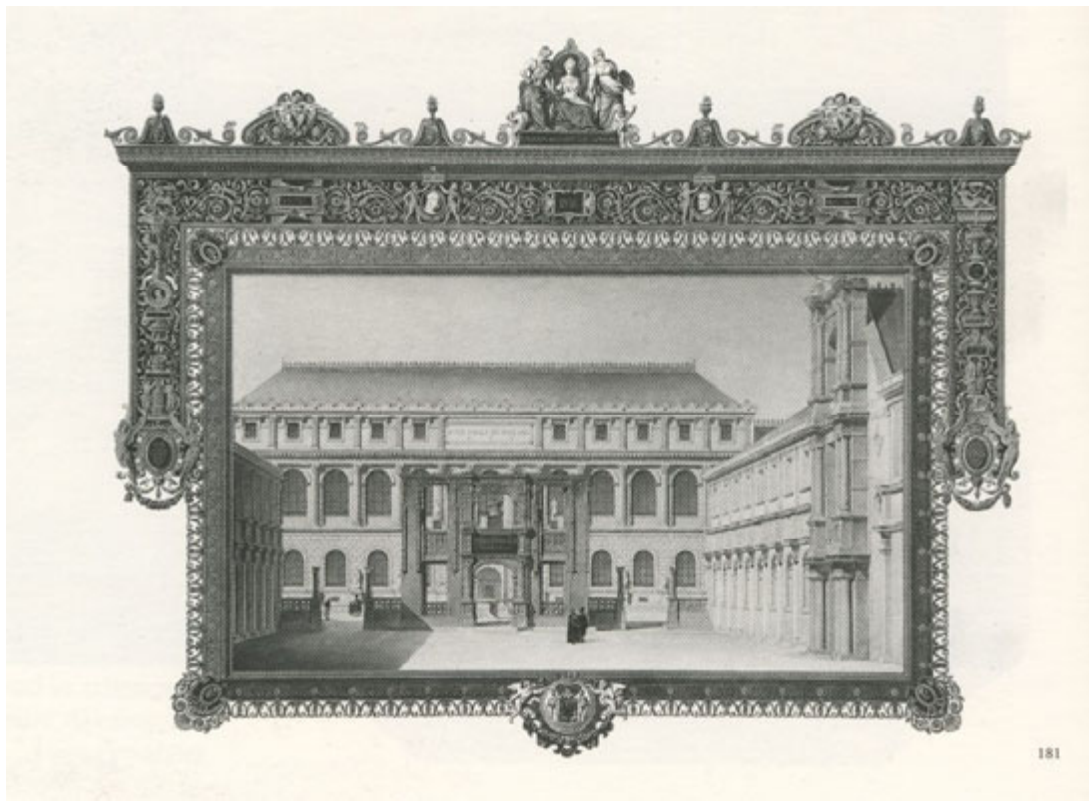
L'École Royale des Beaux Arts.  
1755



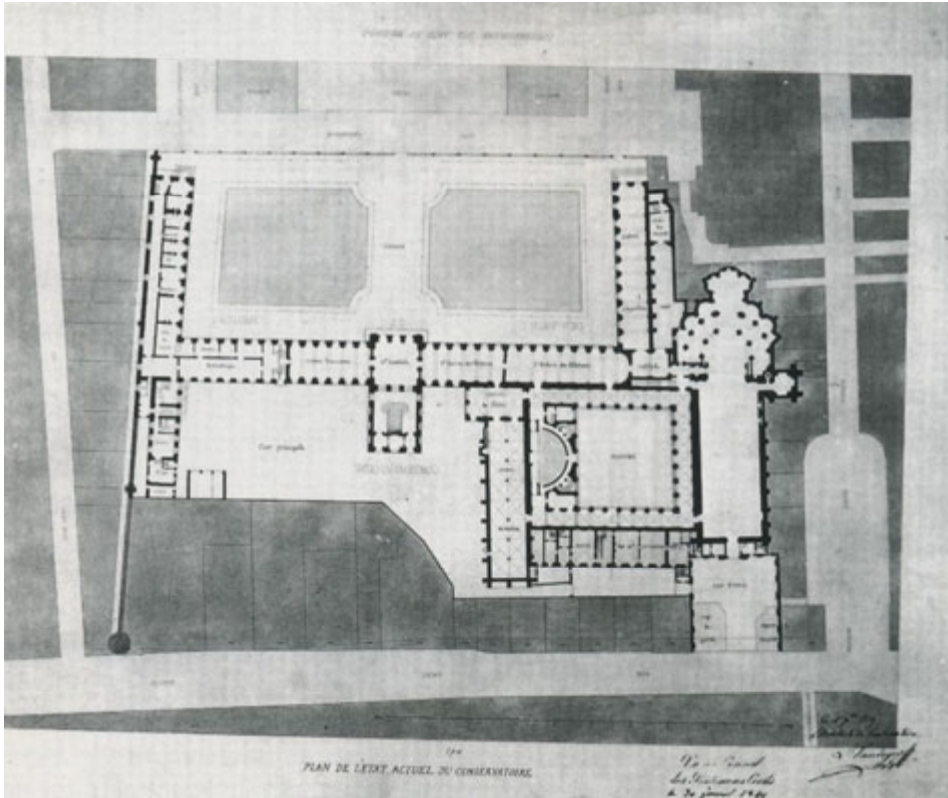
*Arch.  
L'École des Beaux Arts*







**Léon Vaudoyer (1803-1872)**



Conservatoire national des arts et métiers, Paris  
A partir de 1838

