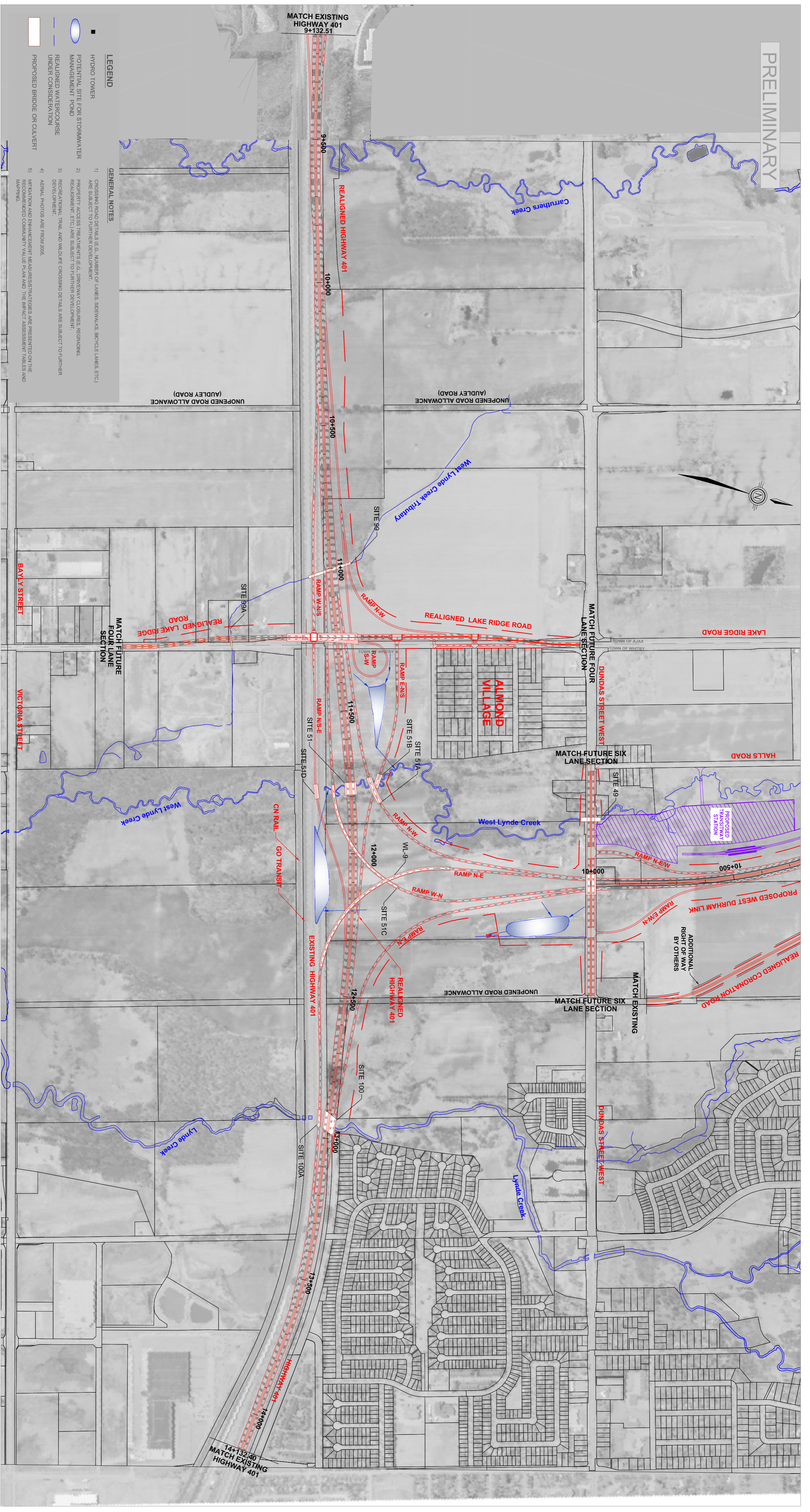
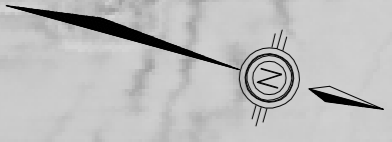


PRELIMINARY

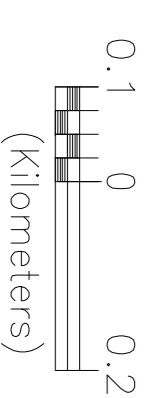


LEGEND

- HYDRO TOWER
- POTENTIAL SITE FOR STORMWATER MANAGEMENT POND
- REALIGNED WATERCOURSE UNDER CONSIDERATION
- PROPOSED BRIDGE OR CULVERT

GENERAL NOTES

- 1) GROSSING ROAD DETAILS (E.G. NUMBER OF LANES, SPECIALS, BICYCLE LANES, ETC.) ARE SUBJECT TO FURTHER DEVELOPMENT.
- 2) PROPERTY ACCESS TREATMENTS (E.G. DRIVEWAY CLOSURES, REGROWING, REPAVEMENT, ETC.) ARE SUBJECT TO FURTHER DEVELOPMENT.
- 3) REPEATING, TRAIL AND WILDLIFE CROSSING DETAILS ARE SUBJECT TO FURTHER DEVELOPMENT.
- 4) AERIAL PHOTOS ARE FROM 2006.
- 5) NOTATION AND ENHANCEMENT MEASURES STRATEGIES ARE PRESENTED ON THE PROPOSED CORONATION ROAD PLAN AND THE IMPACT ASSESSMENT MAPS AND MAPPING.



407 EAST
INDIVIDUAL ENVIRONMENTAL ASSESSMENT STUDY
WESTERN SECTION - HIGHWAY 401
PRELIMINARY DESIGN PLAN
AUGUST 2009

SHEET
4 OF 4