

***Soesiladeepakius aschnae* gen. et sp. nov. and *Soesilarishius amrishi* gen. et sp. nov. from Suriname (Araneae: Salticidae)**

by Dr Dewanand Makhan*

*Willem Bilderdijkhove 19, 3438 PM Nieuwegein, The Netherlands

Makhan, D. (2007). *Soesiladeepakius aschnae* gen. et sp. nov. and *Soesilarishius amrishi* gen. et sp. nov. from Suriname (Araneae: Salticidae). *Calodema Supplementary Paper No: 60*: 1-8.

Abstract: In this paper two additional new genera and two new species in the family Salticidae from Suriname are described, *Soesiladeepakius aschnae* gen. et sp. nov. and *Soesilarishius amrishi* gen. et sp. nov.

Introduction

In this paper two additional genera of Salticidae (Araneae) are described from Suriname, South America, namely, *Soesiladeepakius* gen. nov., *Soesilarishius* gen. nov. and with two new species, *Soesiladeepakius aschnae* sp. nov. and *Soesilarishius amrishi* sp. nov. Holotypes are deposited in the insect collection of the Department of Entomology, University of Suriname, Paramaribo, Suriname.

***Soesiladeepakius* gen. nov.**

Type species: *Soesiladeepakius aschnae* sp. nov.

Description: Small species, chelicerae fissidentate, palpi very short, posterior side of palpal organ hook-shaped.

Etymology: This genus is named after both my wife, Soesila Makhan and my son, Deepak Makhan.

Comments: *Soesiladeepakius* gen. nov. appears to be allied to the genus *Thiodina* Simon, 1900, but differs in the shape of the palpal organ.

***Soesiladeepakius aschnae* sp. nov. (Figs. 1-3, 7-9)**

Type: Holotype male. Suriname, Kasikasima, 27.3.1996, coll. D. Makhan. Paratypes: 5 males, same data as holotype.

Description (holotype male): Total length 2.4 mm. Carapace 1.1 mm long 1.0 mm wide, brown, with some white hairs on anterior side, black between the lateral eyes and anterior eyes and white hairs present under the anterior eyes. Chelicera as in Fig. 1. Abdominal length 1.1 mm, width 0.6 mm, brown and with brown hairs. Spinnerets brown. First leg 2.6 mm long, brown, metatarsus with 2 rows of long spines and tibia with 3 rows of long spines, femur, tibia, patella, metatarsus and tarsus yellow-brown. Second leg 2.3 mm long, femur,

Calodema Supplementary Paper No. 60 (2007)

tibia, patella, metatarsus and tarsus yellow-brown. Third leg 2.3 mm long, femur, patella, tibia, metatarsus and tarsus yellow-brown. Fourth leg 2.6 mm long, femur, tibia, patella, metatarsus and tarsus yellow-brown.

Etymology: This species is named after my daughter, Aschna Makhan.

***Soesilarishius* gen. nov.**

Type species: *Soesilarishius amrishi* sp. nov.

Description: Large species, chelicera unidentate, abdomen very short and the carapace very large.

Etymology: This genus is named after both my wife, Soesila Makhan and my son, Rishwan Makhan.

Comments: *Soesilarishius* gen. nov. appears to be closely allied to the genus *Amycus* Koch, 1846, but differs in the shape of the palpal organ.

***Soesilarishius amrishi* sp. nov. (Figs. 4-6, 10-11)**

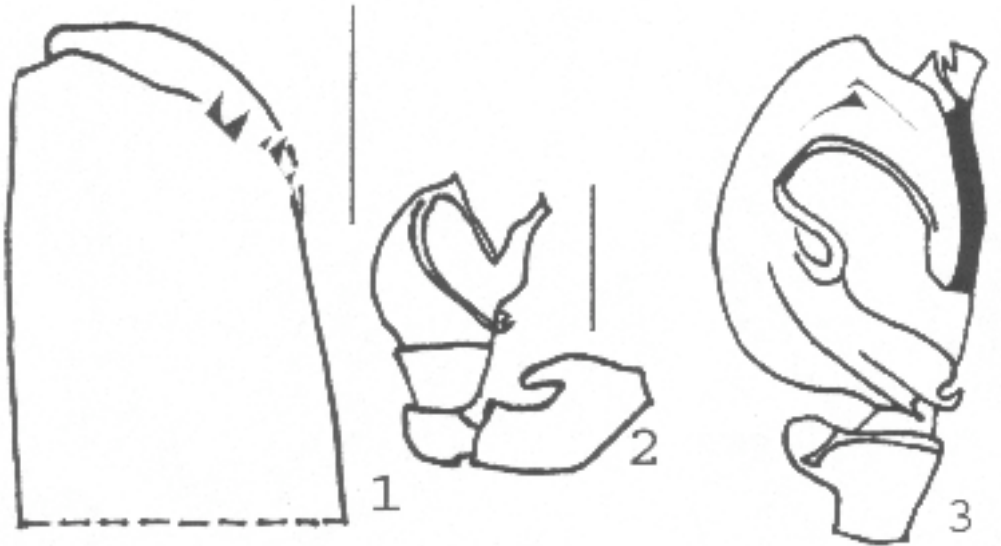
Type: Holotype male. Suriname, Kasikasima, 27.3.1996, coll. D. Makhan (only the holotype).

Description (holotype male): Total length 3.1 mm. Carapace 1.8 mm long, 1.3 mm wide, dark-brown, darker from middle to anterior side. White hairs present under anterior eyes. Chelicera as in Fig. 4. Abdomen 1.0 mm long, 0.8 mm wide, dark-brown, with brown setae. Spinnerets dark-brown. First leg 3.5 mm long, metatarsus, femur, tibia, patella, metatarsus dark brown and tarsus yellow-brown. Second leg 3.3 mm long, femur, tibia, patella, metatarsus dark brown and tarsus yellow-brown. Third leg 3.3 mm long, femur, patella, tibia, metatarsus dark brown and tarsus yellow-brown. Fourth leg 3.5 mm long, femur, tibia, patella, metatarsus dark brown and tarsus yellow-brown.

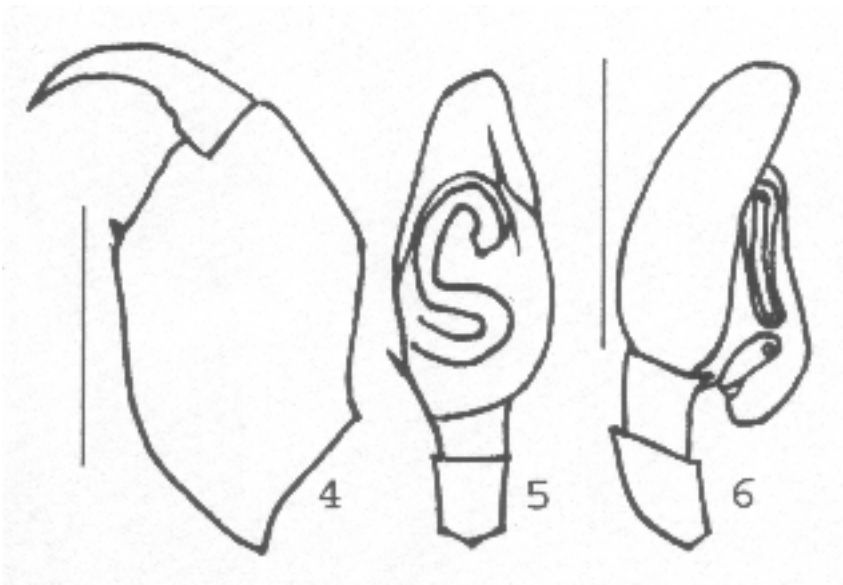
Etymology: This species is named after my son, Amrish Makhan.

References

- Koch, C.L. (1846).. Die Arachniden. Dreizehnter Band. Nurnberg, pp. 1-234, pl.CCCCXXXIII-CCCCLXVIII.
Makhan, D. (2006). *Rishaschia* gen. nov. and new species of Salticidae from Suriname (Araneae). *Calodema*, 5: 9-18.
Simon, E. (1900). Etudes arachnologiques. 30e Memoire. XLVII. Description d'especes nouvelles de la famille des Attidae. *Ann. Soc. Ent. France*, 69: 27-61.



Figs. 1-2. *Soesiladeepakius aschnae* sp. nov. 1 = male right chelicera (scale line = 0.2 mm), 2 = right palpal organ, prolateral view (scale line = 0.3mm). Fig. 3. *Soesiladeepakius aschnae* sp. nov. right palpal organ, ventral view (scale line = 0.3 mm).



Figs. 4-6. *Soesilarishius amrishi* sp. nov. 4 = male right chelicera (scale line = 0.5 mm), 5-6 = right palpal organ, 5 = ventral, 6 = retrolateral view (scale line = 0.7 mm).

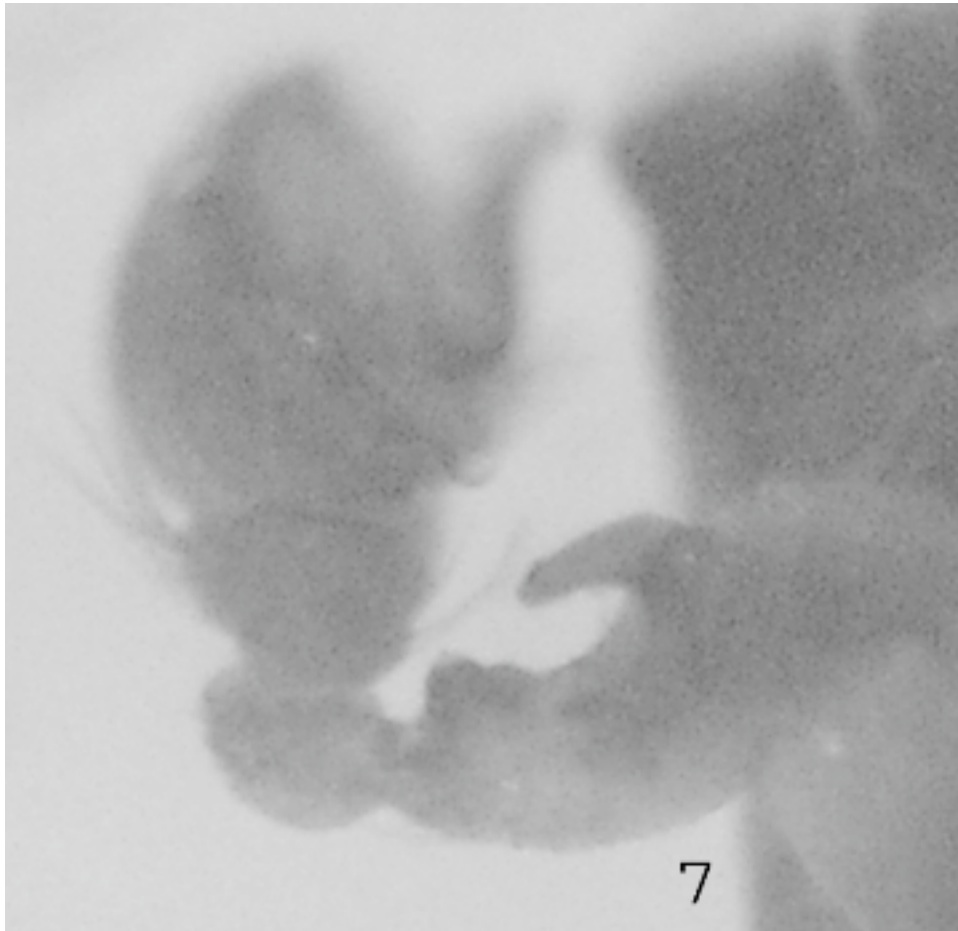


Fig. 7. *Soesiladeepakius aschnae* sp. nov. 7 = right palpal organ, prolateral view.



Fig. 8. *Soesiladeepakius aschnae* sp. nov., 8 = male habitus, ventral view (scale line = 0.8 mm).



Fig.9. *Soesiladeepakius aschnae* sp. nov., 9 = male, dorsal habitus (scale line = 0.8 mm).



Fig.10. *Soesilarishius amrishi* sp. nov., 10 = male habitus, ventral view (scale line = 1.0 mm).



Fig. 11. *Soesilarishius amrishi* sp. nov., 11 = male habitus, dorsal view.

Date of publication: 1 November 2007
Copyright: Dr Dewanand Makhan
Editor: Dr T.J. Hawkeswood (www.calodema.com)