

HUMAN HEALTH

ENVIRONMENTAL HEALTH

POWERFUL TOOLS
MAKE IT AN
EASY ROAD



CHROMERA
CHROMATOGRAPHY
DATA SYSTEMS


PerkinElmer
For the Better

CHROMERA, THE POWERFULLY EASY CDS

For today's analyst, new state-of-the-art chromatography instrumentation can deliver richer data - and even more productivity in their lab operations. However no

chromatography system is complete without powerful software to manage, interpret and report on the complex data stream. PerkinElmer's chromatography data system (CDS), Chromera®, combines powerful functionality with unmatched ease-of-use for a more streamlined data handling experience. From the moment you log on, you'll notice how simple and intuitive it is. The interface is designed so you can easily locate key functions. Any task you wish to perform is only one or two clicks away. And every page is optimized to allow for maximum integration of information. Even installation is effortless.

- The Peak Integration Wizard walks the user through every step in setting up an optimized peak integration method.

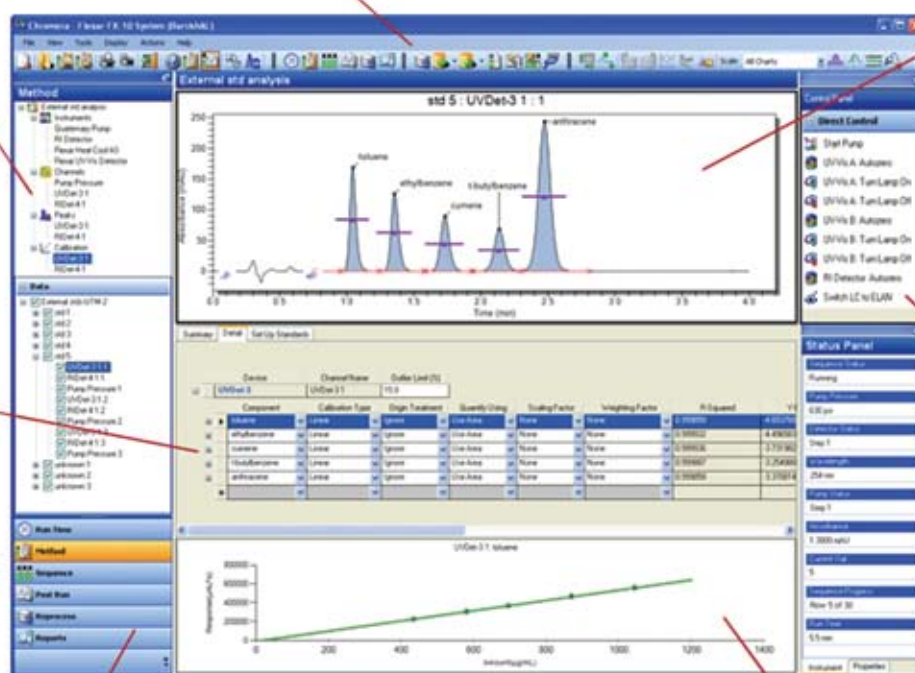
Powerfully easy wizards to walk you through sequence setup, integration and reporting

A familiar user interface, easy to learn, easy to use

Real-time multichannel data processing allows intuitive graphical interaction with your data

Methods can be developed and implemented graphically

Streamlined navigation means all processes are only one click away



Task-oriented workflow guides users of every skill level from start to finish

Customizable graphical workspace to suit your needs best

**Chromera will help you
do your job easier and faster.**



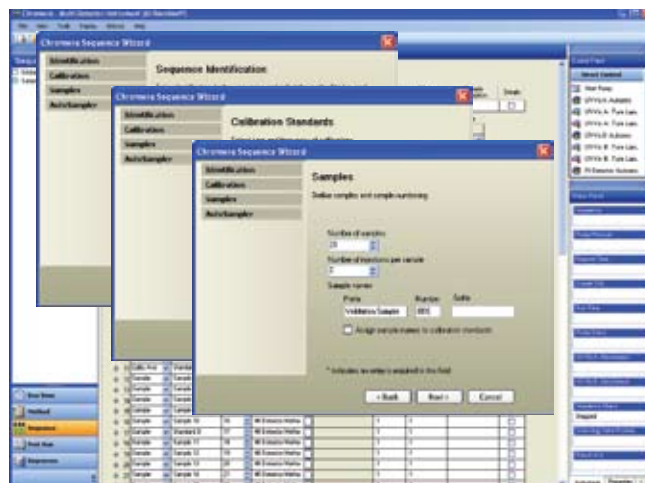
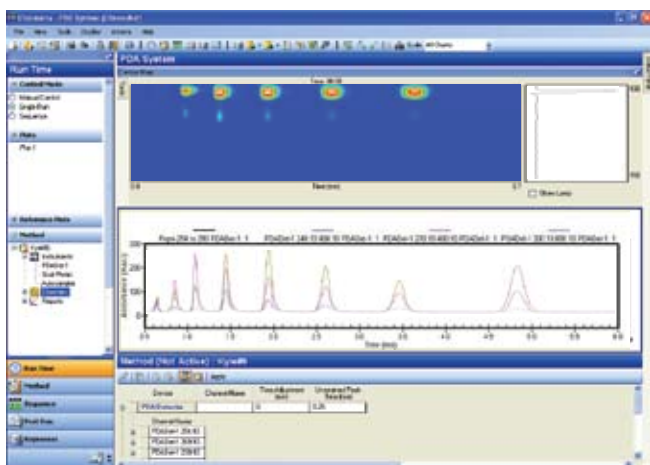
CHROMERA, THE POWERFULLY EASY CDS

Powerful Functionality

- Device description technology automatically changes the display to reflect the instrument you've selected
- Status panel displays critical parameters from any screen at all times
- Method editing can be done in real time with immediate feedback on status
- Run-time can be extended during analysis to facilitate your method development process
- 3D spectral examination functions allow compound identification confirmation

Helpful Wizards

- Point-and-click identification automatically enters data when clicking on a point in your chromatograph
- Component dictionary memorizes compound entries for fast data entry, preventing spelling errors and repeated searching
- Decision points automatically pause a sequence so you can check parameters and make any adjustments
- Reporting wizard provides a wide range of templates as well as the ability to customize your own reports
- The Peak Integration Wizard walks the user through every step in setting up an optimized peak integration method.
- Powerful Peak Integration Wizard to automate method development



Find out more at: www.perkinelmer.com/chromera

PerkinElmer, Inc.
940 Winter Street
Waltham, MA 02451 USA
P: (800) 762-4000 or
(+1) 203-925-4602
www.perkinelmer.com



For a complete listing of our global offices, visit www.perkinelmer.com/ContactUs

Copyright ©2010, PerkinElmer, Inc. All rights reserved. PerkinElmer® is a registered trademark of PerkinElmer, Inc. All other trademarks are the property of their respective owners.

008568_01