

Station 1

Project Background

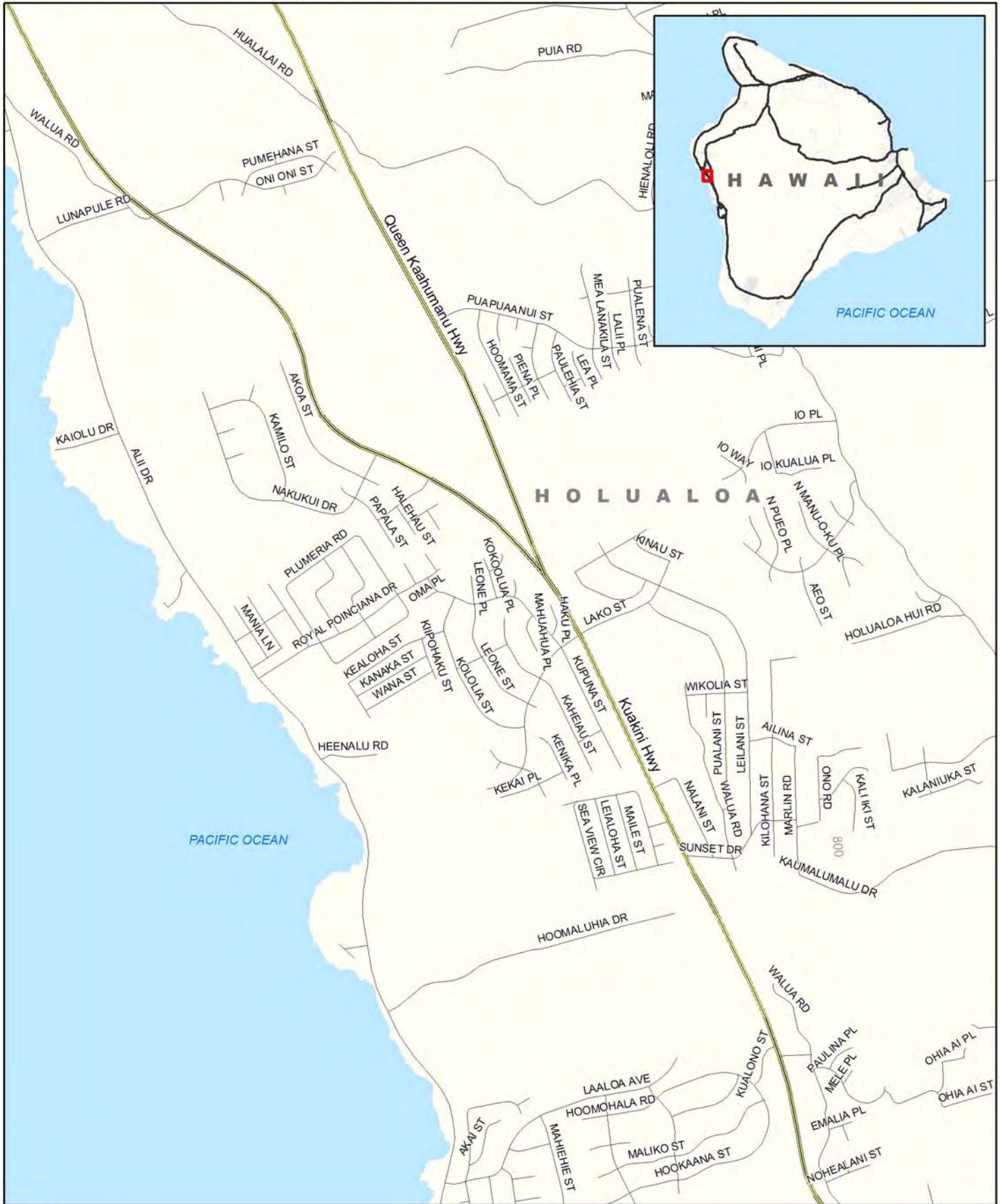
The County of Hawaii is proposing to construct an extension of Lako Street from its current terminus to Ali`i Drive. The Final EA was completed in 2004, and a Finding of No Significant Impact was issued.

A lawsuit was filed against the project following the completion of the Final EA. The claim stated that an EA was not adequate, and that an Environmental Impact Statement should be prepared due to the archaeological features in the project vicinity.

In 2007, a judgment in favor of the County ruled that the FEA was adequate for the Lako Extension. The final judgment was appealed. The County is requesting that the appeal be dismissed. The decision on the appeal/dismissal are pending.

The County of Hawaii is moving forward with the design phase of the Lako Street Extension so that improvements can be constructed in a timely manner (once the lawsuit is settled) to address circulation needs in the North Kona area, and to augment the planned La`aloa Avenue extension capacity.

The County acknowledges that there will be impacts to adjacent properties along the corridor, and thus have committed to working with the community to develop a Context Sensitive Solution (CSS) for the design elements of the corridor.



- Major Street
- Local Street
- Water

0 1,000 2,000 Feet



**Lako Street Extension
Vicinity Map**
Kailua-Kona, Hawaii

Lako Street Extension Decision Making Flowchart

This chart illustrates the general flow of decisions that will be made during the Context Sensitive Solution (CSS) process. The County of Hawai'i, will utilize the input obtained through the CSS process, in its entirety, to develop the final project decisions.

INFORMATION

ADVICE

RECOMMENDATION

DECISION

Facilitated by:
CH2M HILL

Advisory Group:
Residents
Businesses
Organizations
Affected agencies

General
Public

Agencies
(County, State & Federal)

County of Hawai'i

Lako Street Extension
Advisory Group
Operating Agreement
1st Advisory Group Meeting, December 19, 2007
[Click Here to Download](#)

Purpose

The Lako Street Advisory Group will focus on providing meaningful input Hawai'i as it plans for the extension of Lako Street in the Keolu/North Kona area.

Role

The Advisory Group is composed of people interested in the planning of the Lako Street and Keolu/North Kona area. Members include people who will travel, people who reside or work in the area as well as individuals affiliated with affected organizations and agencies.

The expectations that all members will:

- Attend all meetings and prepare appropriately because of the importance of participation and the relationships which will develop among members.
- Clearly articulate and reflect the interests they bring to the table.
- Listen to other points of view and try to understand the interests of others.
- Openly discuss issues with people who hold diverse views.
- Actively generate and evaluate options, and
- Keep their agency or organization informed of the Advisory Group's work.

CH2M Hill will provide facilitation services to the Advisory Group. The facilitator will:

- Design and implement discussion procedures.
- Design meeting agendas.
- Conduct meetings.
- Make strategic suggestions as appropriate.
- Develop and maintain an email list for distribution of information.
- Prepare a meeting summary for distribution to members and other interested parties.
- Remain impartial toward the substance of the issues under discussion.
- Remain responsible to the full Group and not to individual members or sub-groups.
- Resolve discussion problems accepted by the Group, and
- Work with members to resolve process questions, and construct robust options for the Group's consideration as appropriate.

Representatives of Hawai'i County will attend all Advisory Group meetings, discuss the issues and provide timely information to the Group.

Meeting and Discussion Guidelines

The Advisory Committee seeks to have productive and useful meetings. To this end, our collective expectations are:

- Meetings will begin promptly and adjourn by the time specified on the agenda.
- Members will arrive on time and stay through the entire meeting.
- The facilitators will call on people to speak during the meetings.
- Only one person will speak at a time.
- Members will focus on substantive and procedural issues rather than personalities.
- Members will avoid side conversations that might be disruptive.
- Members should ensure cell phones are turned off at meetings.
- Members will be brief in their comments and avoid repeating themselves or others.

The facilitators will distribute material, including an agenda, at least three working days in advance of meetings. Members are expected to read the material beforehand and come prepared to contribute to the discussion.

Members of the general public are both invited and encouraged to attend all Advisory Group meetings. However, these sessions are intended to focus on the discussions of the Advisory Group and it is not anticipated that there will be opportunities for the broader public to participate during Advisory Group meetings. Other opportunities, however, will be available for the general public to offer their input to the County of Hawai'i at other times.

Decision Making

By law, the County of Hawai'i has the responsibility of making final decisions about the improvement on Lako Street. For this reason, the County of Hawai'i is not a member of the Group, although its representatives will attend and participate in all meetings. As in some instances, the Group is advisory to the County of Hawai'i on matters of general interest to the community as they relate to the planning, design and construction of the improvement.

While the ideal may be for members to reach consensus on a variety of variables, such as the importance of criteria for decision making, the pros and cons of identified roadway features, or the preferred mitigation measures, it is not required. The County of Hawai'i will utilize the Advisory Group's input in its entirety in its own decision-making process. This will happen primarily through:

- The County of Hawai'i's listening to the Group's discussions and answering questions in a timely fashion.
- The County of Hawai'i's review of all meeting summaries, and
- The dissemination of a Meeting Summary which will be drafted and distributed by CH2M HILL after each meeting.

The Advisory Group and the County of Hawai'i acknowledge that membership on this Advisory Group is voluntary and the commitments outlined in this Operating Agreement are non-binding. Liability for the project decisions made as a result of input provided by the Advisory Group rests solely with the County of Hawai'i.

Lako Street Extension
Advisory Group
Operating Agreement
December 19, 2007

These "Operating Agreements" will evolve as needed to continue to meet the needs of the Advisory Group.

Advisory Group Members

[Signatures of Advisory Group Members]

Facilitator Staff (CH2M HILL)

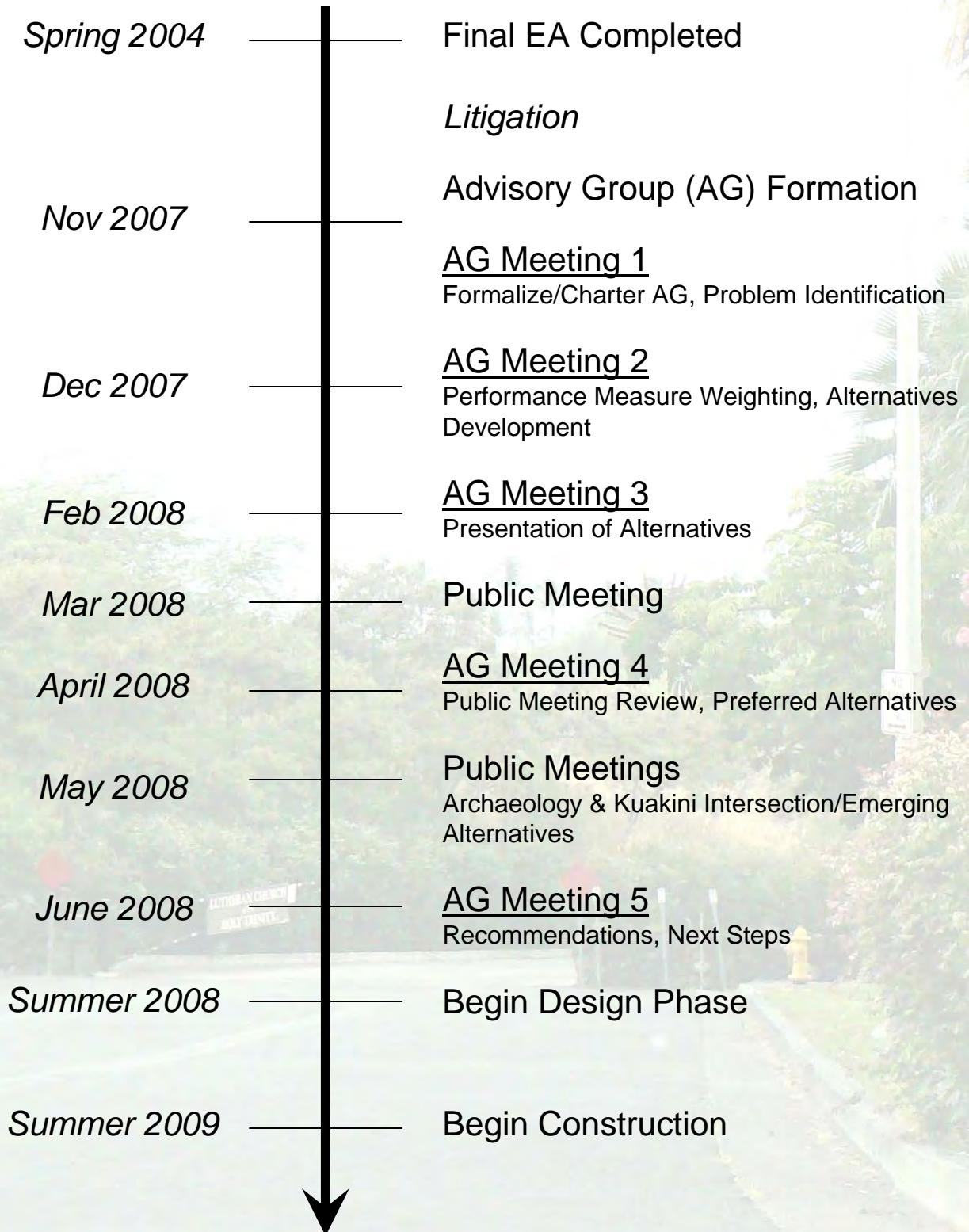
[Signatures of Facilitator Staff]

Hawai'i County Staff

[Signatures of Hawai'i County Staff]

Lako Street Extension Project Schedule

This chart depicts the proposed project timeline



Lako Street Extension Project Definition

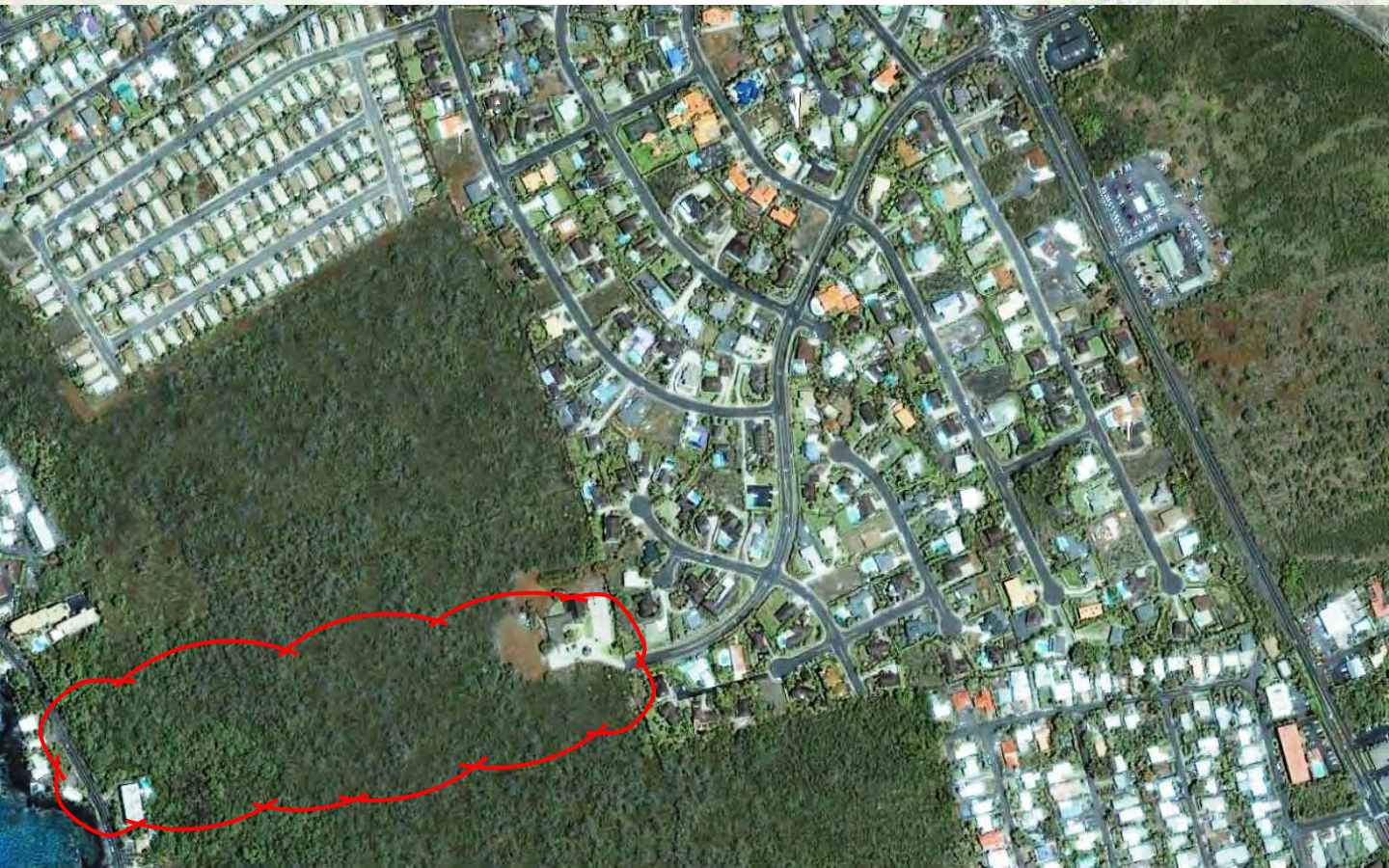
The project definition was created by the Advisory Group to convey the identified value associated with the Lako Street Extension

The Lako Street extension will provide an additional mauka-makai connector route between Ali`i Drive and Kuakini Highway providing improved access, enhanced mobility and an additional emergency vehicle route. The existing portion of Lako Street traverses through a residential neighborhood while the extension traverses important cultural sites. As such, the roadway should serve its proposed multimodal transportation functions while avoiding destruction of cultural sites, addressing pedestrian and vehicular safety, and enhancing/improving quality of life for nearby residents.

Station 2

Lako St. Extension

This station provides a summary of the prioritized issues related to the Lako Street Extension section of the corridor, and emerging alternatives that address the identified issues.



Lako Street Extension

Prioritized Issues Summary

This table summarizes the results of the Advisory Group's individual and small group prioritizing exercise. The highest priority issues are shown at the top of the table.

	Lako Extension				
	Individual		Group		
	Lako \$	# of Individuals.	Points	# of Groups	
Cultural Sites	280	10	15	3	Cultural Sites
Landscaping	125	6	8	2	Lako/Ali'i intersection
Reduce noise impacts	100	6	6	2	Pedestrian access/safety
Lako/Ali'i intersection	100	6	5	2	Reduce noise impacts
Utilities	70	7	3	2	Landscaping
Pedestrian access/safety	80	6	3	2	Utilities
Encourage low speeds	70	5	3	1	Encourage low speeds
Accommodate bicycles	60	4	2	1	Accommodate bicycles
Ingress/egress on Lako extension	55	4			Ingress/egress on Lako extension
Improve x-road intersections	20	3			Improve x-road intersections
Improve Lako/Kuakini intersection	--	--	--	--	Improve Lako/Kuakini intersection
Reduce traffic on adjacent streets	--	--	--	--	Reduce traffic on adjacent streets

Lako Extension - Cross-Section Alternative 2

Curbed Section with Median



Extension Cross-Section

comments related to the emerging alternatives

Curbed Section with Median

- Seems sensible to match the roadway section with existing Lako
- As a driver, I might like consistency
- We don't need a lot of green that requires care and money
- The County is not going to mow grass
- Make section as narrow as possible between burial and Kona Palms
- Include a noise and visual filter for the archaeological sites that will not be directly impacted by the extension
- Let's use native plants and trees (things that already do well) to buffer what is important

2 copies
(w/slides 2 & 3)

Extension Cross-Section

comments related to the emerging alternatives

Open Section with Median

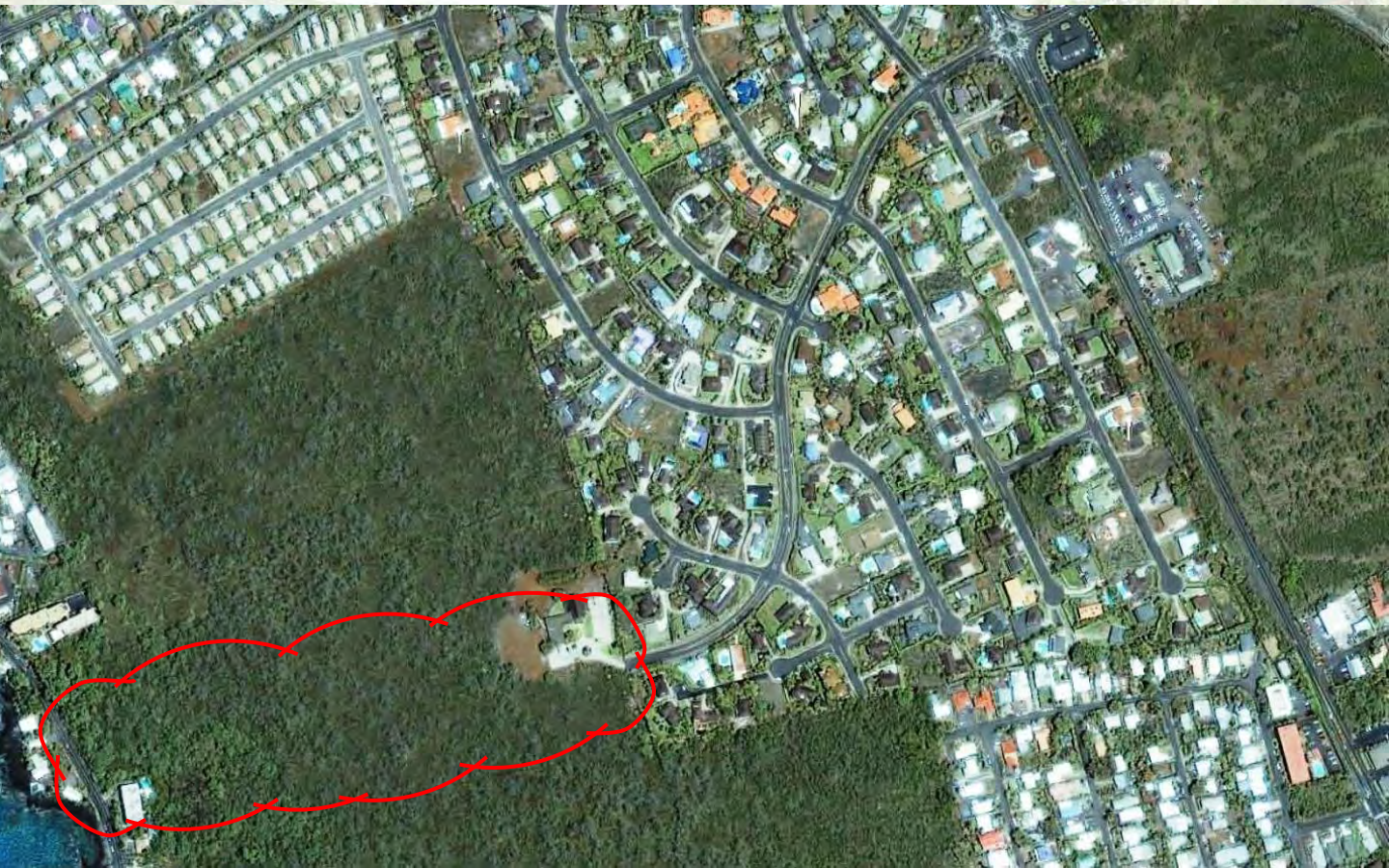
- I'm concerned about bicycles hitting pedestrians
- Have a shared use path on one side only and just pedestrians on the other side
- We don't need a lot of green that requires care and money
- The County is not going to mow grass
- Make section as narrow as possible between burial and Kona Palms
- Include a noise and visual filter for the archaeological sites that will not be directly impacted by the extension
- Let's use native plants and trees (things that already do well) to buffer what is important

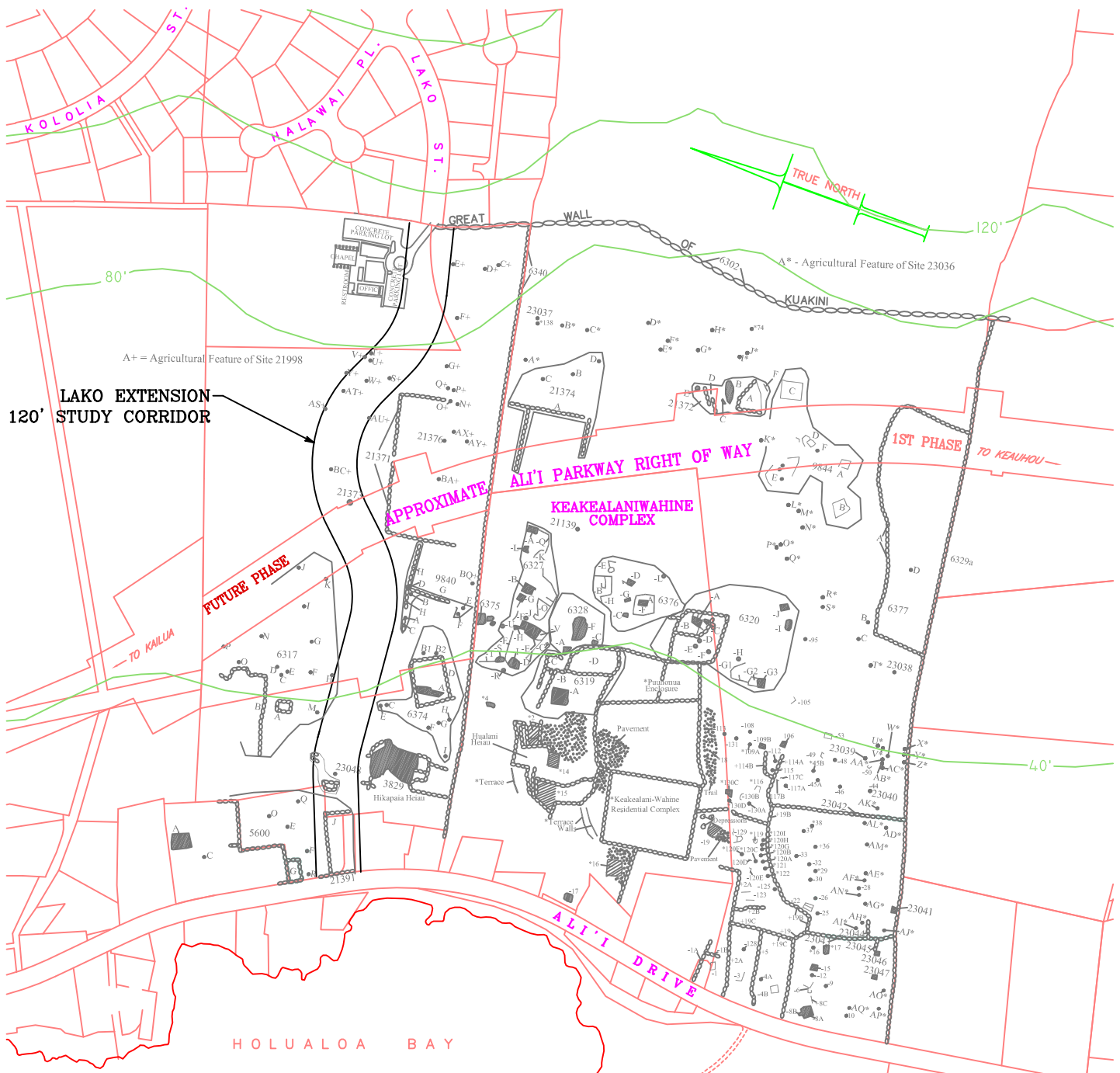
1 copy
(w/slide 3)

Station 3

Cultural/Archaeological Features

This station provides a summary map of the archaeological features surrounding the proposed Lako Street Extension.





CULTURAL SITES WITHIN STUDY CORRIDOR

SIHP SITE NO.	FEATURE	TYPE	FUNCTION
5600	J	ENCLOSURE	PERM. HABITATION
6302		WALL	LIVESTOCK CONTROL
6317	H,M	COMPLEX	PERM. HABITATION
21373		TERRACE	AGRICULTURE
21391		WALL	LIVESTOCK CONTROL
21998	E,S,T,U, V,W,Y,AS, AT,AU,BC	COMPLEX	AGRICULTURE
23048	A,B	COMPLEX	TEMP. HABITATION

SOURCE: HAUN & ASSOC., MARCH 2003. APPENDIX D IN FINAL ENVIRONMENTAL ASSESSMENT FOR LAKO STREET EXTENSION, APRIL 2004

GRAPHIC SCALE:



SOURCE: HILO ENGINEERING, INC. / LAKO STREET FEA
 USGS, "KEALAKEKUA QUADRANGLE, HAWAII" 1:24,000 (1996)
 RM TOWILL / ALII HIGHWAY / FEIS

MAP SHOWING LAKO STREET EXTENSION,
 ARCHAEOLOGICAL SITES AND PARCEL
 BOUNDARIES

PROPOSED LAKO STREET EXTENSION
 DEPARTMENT OF PUBLIC WORKS
 COUNTY OF HAWAII
 HOLUALOA 3RD & 4TH, NORTH KONA
 ISLAND OF HAWAII, HAWAII

Mauka Termini of the Lako Street Extension



Site 6302 (Great Wall of Kuakini)

Makai Termini of the Lako Street Extension



Site 21391 (Livestock Control Wall – parallel to Ali`i Drive)



Kona Palms (south side of Lako Street extension)

Example Native Plants in the Lako Street Vicinity



Naupaka Kahakai



Hau Tree