

---



**HP Matrox G250  
Graphics Accelerator Card**

Installation Guide

Installationshandbuch

Guide d'installation

Guía de Instalación  
Léase esto primero

Guida all'installazione

---

**English** . . . . . Chapter 1

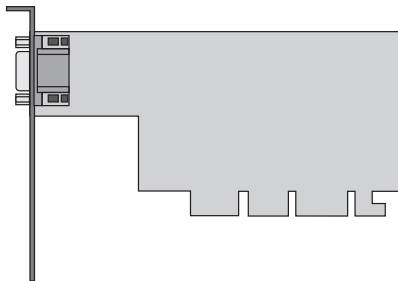
**Deutsch**. . . . . Kapitel 2

**Français** . . . . . Chapitre 3

**Español**. . . . . Capítulo 4

**Italiano**. . . . . Capitolo 5

HP Matrox G250



CD-ROM Software



Installation Guide



---

# HP Matrox G250 Installation Guide

---

## Introduction

Congratulations on purchasing one of HP's High Performance Graphics Accelerator cards. This installation guide shows you how to install your graphics card. It includes information on how to install and configure the drivers software.

### HP Matrox G250 Features

- 8 MB of Synchronous Graphics RAM (SGRAM) memory, allowing a high precision and high performance graphics acceleration.
- Support for 16:10 wide-format monitors.

---

## Before You Install

### **CAUTION**

Your PC and graphics board can be permanently damaged by static electricity. Before handling the board, touch the unpainted part of your PC's metal chassis. Maintain grounding by wearing a wrist strap attached to the chassis. Handle the board by its backplate and top edge. Do not touch the edge connector.

### Supported Platforms

To find out which PCs support your HP High Performance Graphics Accelerator card, go to the following HP Web site:

**[www.hp.com/go/pcaccessories](http://www.hp.com/go/pcaccessories)**

### Supported Operating Systems

- Windows 95
- Windows 98
- Windows 2000
- Windows NT 4.0

### **NOTE**

This manual documents the procedure to upgrade an existing AGP graphics solution with a HP High Performance Graphics Accelerator card.

---

## Overview of the Installation Procedure

Installing your HP High Performance Graphics Accelerator card is a four step process. You need to:

- Remove the Existing Video Driver Software (if necessary)
- Install your HP High Performance Graphics Accelerator card
- Install the New Driver Software
- Configure the Driver Software

---

**NOTE**

It is strongly recommended that you have no video driver installed when you begin installing your new card.

---

---

## Step 1: Removal of the Existing Video Driver Software

This section describes how to remove the existing driver software in a PC running Windows 95, Windows 98, Windows NT 4.0 or Windows 2000. If you do not have any specific driver software installed (for example you are using the standard VGA driver) you can proceed to “Step 2: Installing your HP High Performance Graphics Accelerator Card” on page 4.

- 1 Switch on your PC. Start up Windows.
- 2 Click on **Start** ⇨ **Settings** ⇨ **Control Panel**.
- 3 Double click on **Add/Remove Programs**.
- 4 Click on the **Install/Uninstall** tab  
(Windows 95, Windows 98 & Windows NT 4.0 only)
- 5 On the list of software which appears, select the old driver software and click **Add/Remove**. (Windows 95, Windows 98 & Windows NT 4.0)  
For Windows 2000 click on **Change/Remove**
- 6 To confirm uninstallation of the driver click **Ok**.
- 7 Follow the onscreen instructions.
- 8 When uninstallation is complete, shut down your PC.

---

## Step 2: Installing your HP High Performance Graphics Accelerator Card

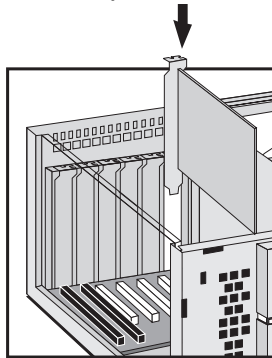
---

### **WARNING**

For your safety, never remove the PC's cover without first removing the power cord, data cables and any connection to a telecommunications network. Always replace the cover before switching on again.

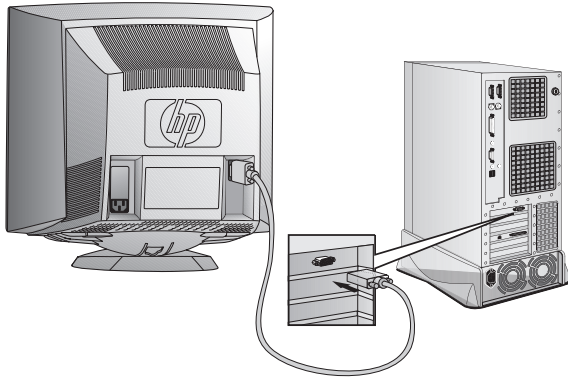
---

- 1 With the PC turned off, disconnect the power cord and any connection to a telecommunications network, then remove the cover.
- 2 Disconnect the monitor cable from the old graphics card.
- 3 Depending on the PC model, you may need to remove either the screws or the retaining bracket which secures the graphic card in place.
- 4 Slide the card out of the slot.
- 5 Slide your new HP High Performance Graphics Accelerator card into the slot and press firmly.



- 6 Secure the card to the chassis by either replacing the screws or the retaining bracket.
- 7 Replace the computer's cover.

- 8 Connect the video cable from your monitor to the video connector on the card.



- 9 Reconnect the power cables and any telecommunication cables.

---

## Step 3: Installing the New Driver Software

---

### **NOTE**

#### **For Windows NT 4.0 users only.**

Once the driver is installed you should reboot your PC and reinstall your current service pack.

If your PC has a Pentium III processor and you are using Service Pack 4 or earlier you should install the Intel SIMD driver available on the software CD-ROM.

Ensure that the Plug-and-Play Operating System setting of the BIOS is *disabled* before installation.

---

Windows 95,  
Windows 98,  
Windows 2000  
and Windows  
NT4.0 users

- 1 Start the PC.
- 2 Insert the software CD-ROM disk in your drive.

## HP Matrox G250 Installation Guide

### Step 4: Configuration of the Driver Software

- 3 Double-click on **setup.exe** file on the software CD-ROM.  
Depending on your operating system, this file can be found in:

	HP Matrox G250
Windows 95/98	<b>Win9x\disk01</b>
Windows 2000	<b>win2000</b>
Windows NT 4.0	<b>NT4.0\disk01</b>

---

## Step 4: Configuration of the Driver Software

The detection of the graphics card, the configuration of the operating system, and the loading of the drivers is, in most cases, automatic. Once the graphic card is physically installed in your PC, all you have to do is turn on your PC and use the new card. The graphics card driver software can be configured by using the Settings mode unless otherwise documented. For additional information on configuration refer to the CD-ROM supplied with your graphics card.

Windows 95, 1 Click on **Start** ⇨ **Settings** ⇨ **Control Panel**.

Windows 98 and 2 Double click on **Display**.

Windows 2000 3 Click on the **Settings** tab.

users 4 Click on **Advanced** and **Adapter**.

Windows NT4.0 1 Click on **Start** ⇨ **Settings** ⇨ **Control Panel**

users 2 Double click on **Matrox Display Settings**.

3 Click on the **Matrox Display Properties** tab.



## Troubleshooting

This section describes how to solve problems which may occur with your HP High Performance Graphics Accelerator card.

If the PC fails to start or if the screen is blank and there are no error messages

Solution	Explanation
Check that the PC and monitor are turned on. (The power light should be illuminated.)	Useful routine checks, especially if you have just moved the PC or the monitor.
Check the monitor's contrast and brightness settings.	
Make sure the power outlet is working.	
Check that the graphics card is correctly installed.	

The PC starts normally but the screen is blank or the contents are corrupted.

Solution	Explanation
Check that your monitor supports the graphics card resolution and refresh rate. If the monitor does not support the selected resolution, boot in Safe mode (Windows 95, Windows 98, Windows 2000) or VGA mode (Windows NT 4.0).	This problem may occur if you have just changed your monitor.
The graphics card driver may be corrupted or not properly installed. Reboot in Safe mode (Windows 95, Windows 98, Windows 2000) or VGA mode (Windows NT 4.0).	If the driver files are corrupted, the PC Workstation may boot but may be unable to switch to high-resolution mode.
Remove the graphics card and then reinstall it. Ensure that the board is properly inserted in the AGP slot.	The graphics card may not be seated correctly. This causes the screen to go blank at this point.

## HP Matrox G250 Installation Guide

### Troubleshooting

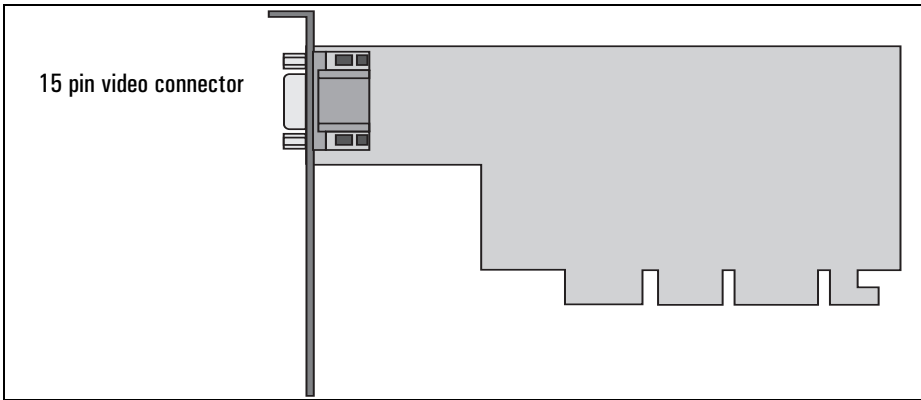
Graphics performance is below expectations

Solution	Explanation
The graphics card driver may be corrupted or not properly installed. Reboot in Safe mode (Windows 95, Windows 98 and Windows 2000) or VGA mode (Windows NT 4.0).	If the driver files are corrupted, the PC Workstation may boot but may be unable to switch to high-resolution mode.
Try reducing the screen resolution, for example, from 2048x1536 to 1280x1024. Selecting a high screen resolution may be incompatible with the accelerated 3D graphics applications.	Some 3D applications obtain higher performance when using lower screen resolution settings. Using lower screen resolutions can leave more video memory free for 3D acceleration features such as texture mapping and z-buffering.
Check HP Support Services (refer to page 10) for an updated driver version for your application.	HP frequently updates the graphic drivers to incorporate feature and performance enhancements or to fix problems found when running specific applications.
Check for additional information on the web. Refer to "HP Support Services" on page 10.	HP provides additional documentation, such as "Frequently Asked Question (FAQs)" to help you solve any problems you may have with your graphics card.

## Technical Specifications

Feature/Function	Implementation
Card size	Half size AGP, single-slot
Power requirement	4W
AGP support	Full AGP 2X
Operating temperature	0 °C to 55 °C
Operating humidity	20% to 80% (non-condensing)
3D features:	<ul style="list-style-type: none"><li>• New MGA G2xx 128-bit DualBus graphics chip</li><li>• High performance video card with full AGP 2X support featuring Symmetrical Rendering Architecture or PCI support</li><li>• Gouraud shading &amp; Z buffering</li><li>• Advanced 2D, 3D features - alpha blending, anti-aliasing</li><li>• Vibrant Color Quality 3D rendering engine</li><li>• 8MB of Graphics memory upgradeable to 16MB (option)</li><li>• High Speed 250 MHz RAMDAC with ultrasharp image quality</li><li>• Support for high resolutions and colors</li></ul>
RAMDAC frequency	250 MHz
Memory	8 MB SGRAM upgradeable to 16MB

## Physical Layout



## HP Matrox G250 Installation Guide

### HP Support Services

Your HP High Performance Graphics Accelerator Card supports resolutions and refresh rates listed below:

Resolution (true colour)	Refresh Rates
640 x 480	200 Hz
800 x 600	180 Hz
1024 x 768	140 Hz
1152 x 864	120 Hz
1280 x 1024	90 Hz
1600 x 1200	65 Hz
1920 x 1080	60 Hz
1920 x 1200	24 bit max

---

## HP Support Services

For more information on your graphics board and other accessories available for your PC Workstations, you can visit the following pages on HP's Web site

For HP Kayak PC

[www.hp.com/go/kayaksupport](http://www.hp.com/go/kayaksupport)

For HP Vectra PCs

[www.hp.com/go/vectrasupport](http://www.hp.com/go/vectrasupport)

For HP Brio PCs

[www.hp.com/go/briosupport](http://www.hp.com/go/briosupport)

---

# Regulatory Information

## FCC (for USA only)

### Federal Communications Commission Radio Frequency Interference Statement

#### Warning:

This equipment has been tested and found to comply with the limits for a Class B digital device, pursuant to Part 15 of the FCC Rules. These limits are designed to provide reasonable protection against harmful interference in a residential installation. This equipment generates and uses, and can radiate radio frequency energy and, if not installed and used in accordance with the instructions, may cause harmful interference to radio communications. However, there is no guarantee that interference will not occur in a particular installation. If this equipment does cause harmful interference to radio or television reception, which can be determined by turning the equipment off and on, the user is encouraged to correct the interference by one or more of the following measures:

- reorient or relocate the receiving antenna
- increase the separation between the equipment and the receiver
- connect the equipment into an outlet on a circuit different from that to which the receiver is connected
- consult the dealer or an experienced radio/TV technician for help.

Hewlett-Packard's FCC Compliance Tests were conducted with HP-supported peripheral devices and HP shielded cables, such as those you receive with your system. Changes or modifications not expressly approved by Hewlett-Packard could void the user's authority to operate the equipment.

## Notice for Canada

This Class B digital apparatus with the Canadian ICES-003 Regulations.  
Cet appareil numérique est conforme à la norme NMB-003 du Canada.

---

## Hardware Warranty

This HP accessory is covered by a limited hardware warranty for a period of one year from the date of purchase by the original end-user. The type of service provided is return to an HP or repair-authorized reseller service-center.

At Hewlett-Packard's discretion, a defective accessory will be repaired or replaced by a new unit, either of the same type or of an equivalent model.

If this accessory is purchased and used together with an HP Vectra or HP Brio personal computer or HP Kayak PC Workstation, it will be covered by the warranty of this computer or workstation, under the same conditions of service and duration.

Please, refer to the warranty statement provided with your HP personal computer or PC workstation for warranty limitations, customer responsibilities and other terms and conditions.

# HP Matrox G250 Installation Guide

## HP Software Warranty

FOR CONSUMER TRANSACTIONS IN AUSTRALIA AND NEW ZEALAND: THE WARRANTY TERMS CONTAINED IN THIS STATEMENT, EXCEPT TO THE EXTENT LAWFULLY PERMITTED, DO NOT EXCLUDE, RESTRICT OR MODIFY AND ARE IN ADDITION TO THE MANDATORY STATUTORY RIGHTS APPLICABLE TO THE SALE OF THIS PRODUCT TO YOU.

---

## HP Software Warranty

THIS WARRANTY STATEMENT TAKES PRECEDENCE OVER ANY OTHER SOFTWARE WARRANTY STATEMENT INCLUDED WITH THIS PRODUCT.

### **Ninety-Day Limited Software Warranty**

HP warrants for a period of NINETY (90) DAYS from the date of the purchase that the software product will execute its programming instructions when all files are properly installed. HP does not warrant that the software will be uninterrupted or error free. HP does not warrant to the performance of usefulness of any software provided with your computer product. Unless otherwise expressly provided by HP, it is your own responsibility to obtain the latest version of any software and support directly from the software owner or authorized distributor. In the event that this software product fails to execute its programming instructions during the warranty period, Customer's remedy shall be a refund or repair. Should HP be unable to replace the media within a reasonable amount of time, Customer's alternate remedy shall be a refund of the purchase price upon return of the product and all copies.

### **Removable Media (If supplied)**

HP warrants the removable media, if supplied, upon which this product is recorded to be free from defects in materials and workmanship under normal use for a period of NINETY (90) DAYS from the date of purchase. In the event the media proves to be defective during the warranty period, Customer's remedy shall be to return the media to HP for replacement. Should HP be unable to replace the media within a reasonable amount of time, Customer's alternate remedy shall be a refund of the purchase price upon return of the product and destruction of all other nonremovable media copies of the software product.

### **Notice of Warranty Claims**

Customer must notify HP in writing of any warranty claim not later than thirty (30) days after the expiration of the warranty period.

The above warranty shall not apply to defects resulting from: misuse; unauthorized modification; operation or storage outside the environmental specifications for the product; in-transit damage; improper maintenance; or defects resulting from use of non-HP software, accessories, media, supplies, consumables, or such items not designed for use with the product.

HP MAKES NO OTHER EXPRESS WARRANTY, WHETHER WRITTEN OR ORAL WITH RESPECT TO THIS PRODUCT. ANY IMPLIED WARRANTY OF MERCHANTABILITY OR FITNESS FOR A PARTICULAR PURPOSE IS LIMITED TO THE DURATION OF THE EXPRESS WARRANTY SET FORTH ABOVE. SOME STATES OR PROVINCES DO NOT ALLOW LIMITATIONS ON HOW LONG AN IMPLIED WARRANTY LASTS, SO THE ABOVE LIMITATIONS OR EXCLUSION MAY NOT APPLY TO YOU.

This warranty gives specific legal rights, and you may also have other rights which vary from state to state, or province to province.

### **Limitation of Liability and Remedies**

THE REMEDIES PROVIDED ABOVE ARE CUSTOMER'S SOLE AND EXCLUSIVE REMEDIES. IN NO EVENT SHALL HP BE LIABLE FOR ANY DIRECT, INDIRECT, SPECIAL, INCIDENTAL OR CONSEQUENTIAL DAMAGES (INCLUDING LOST PROFIT) WHETHER BASED ON WARRANTY, CONTRACT, TORT OR ANY OTHER LEGAL THEORY. Some states or provinces do not allow the exclusion or limitation of incidental or consequential damages, so the above limitation or exclusion may not apply to you.

---

## HP Software License Agreement

CAREFULLY READ THIS LICENSE AGREEMENT BEFORE PROCEEDING TO OPERATE THE HP ACCESSORY. RIGHTS IN THE SOFTWARE ARE OFFERED ONLY ON THE CONDITION THAT THE CUSTOMER AGREES TO ALL TERMS AND CONDITIONS OF THIS LICENSE AGREEMENT. PROCEEDING TO INSTALLING AND USING THE ACCESSORY INDICATES YOUR ACCEPTANCE OF THESE TERMS AND CONDITIONS. IF YOU DO NOT AGREE TO THE LICENSE AGREEMENT, YOU MUST NOW DESTROY ANY MASTER DISKETTES OR CD-ROMS, OR RETURN THE COMPLETE ACCESSORY AND SOFTWARE FOR A FULL REFUND.

UNLESS OTHERWISE STATED BELOW, THIS HP SOFTWARE PRODUCT LICENSE AGREEMENT SHALL GOVERN THE USE OF ALL SOFTWARE THAT IS PROVIDED TO YOU, THE CUSTOMER, AS PART OF THE HP ACCESSORY. IT SHALL SUPERSEDE ANY NON-HP SOFTWARE LICENSE TERMS THAT MAY BE FOUND ON-LINE, OR IN ANY DOCUMENTATION OR OTHER MATERIALS CONTAINED IN THE ACCESSORY PRODUCT PACKAGING.

Note: Operating system and software applications by Microsoft are licensed to you under the Microsoft License Agreement contained in the Microsoft documentation or displayed on your screen when Microsoft Software Products are launched.

The following License Terms govern the use of the software:

**USE.** Customer may use the software on any one computer. Customer may not network the software or otherwise use it on more than one computer. Customer may not reverse assemble or decompile the software unless authorized by law.

**COPIES AND ADAPTATIONS.** Customer may make copies or adaptations of the software (a) for archival purposes or (b) when copying or adaptation is an essential step in the use of the software with a computer so long as the copies and adaptations are used in no other manner.

**OWNERSHIP.** Customer agrees that he/she does not have any title or ownership of the software, other than ownership of the physical media. Customer acknowledges and agrees that the software is copyrighted and protected under the copyright laws. Customer acknowledges and agrees that the software may have been developed by a third party software supplier named in the copyright notices included with the software, who shall be authorized to hold the Customer responsible for any copyright infringement or violation of this Agreement.

**TRANSFER OF RIGHTS IN SOFTWARE.** Customer may transfer rights in the software to a third party only as part of the transfer of all rights and only if Customer obtains the prior agreement of the third party to be bound by the terms of this License Agreement. Upon such a transfer, Customer agrees that his/her rights in the software are terminated and that he/she will either destroy his/her copies and adaptations or deliver them to the third party.

**SUBLICENSING AND DISTRIBUTION.** Customer may not lease, sublicense the software or distribute copies or adaptations of the software to anyone in physical media or by telecommunication without the prior written consent of Hewlett-Packard.

**TERMINATION.** Hewlett-Packard may terminate this software license for failure to comply with any of these terms provided Hewlett-Packard has requested Customer to cure the failure and Customer has failed to do so within thirty (30) days of such notice.

**UPDATES AND UPGRADES.** Customer agrees that the software does not include updates and upgrades which may be available from Hewlett-Packard under a separate support agreement.

**EXPORT CLAUSE.** Customer agrees not to export or re-export the software or any copy or adaptation in violation of the U.S. Export Administration regulations or other applicable regulation.

**U.S. GOVERNMENT RESTRICTED RIGHTS.** Use, duplication, or disclosure by the U.S. Government is subject to restrictions as set forth in subparagraph (c)(1)(ii) of the Rights in Technical Data and Computer Software clause in DFARS 252.227-7013. Hewlett-Packard Company, 3000 Hanover Street, Palo Alto, CA 94304 U.S.A. Rights for non-DOD U.S. Government Departments and Agencies are as set forth in FAR 52.227-19(c)(1,2).

(9 Nov 1998)

## HP Matrox G250 Installation Guide

HP Software License Agreement



---

## Notice

The information contained in this document is subject to change without notice. Hewlett-Packard makes no warranty of any kind with regard to this material, including, but not limited to, the implied warranties of merchantability and fitness for a particular purpose. Hewlett-Packard shall not be liable for errors contained herein or for incidental or consequential damages in connection with the furnishing, performance, or use of this material. Hewlett-Packard assumes no responsibility for the use or reliability of its hardware or software on equipment that is not furnished by Hewlett-Packard or equipment for which it is not intended. This document contains proprietary information that is protected by copyright. All rights are reserved. No part of this document may be photocopied, reproduced, or translated to another language without the prior written consent of Hewlett-Packard Company.

3Dlabs is a registered trademark. Oxygen and Powerthreads are trademarks of 3Dlabs, Inc. Ltd. OpenGL<sup>®</sup> is a registered trademark of Silicon Graphics, Inc. Windows<sup>®</sup>, Windows NT<sup>®</sup> are registered trademarks of Microsoft, Corp. ©1999. Matrox<sup>®</sup> is a registered trademark of Matrox Electronics Systems Limited.

## Hinweis

Inhaltliche Änderungen vorbehalten. Hewlett-Packard übernimmt keine Garantie welcher Art auch immer für diese Ausrüstung, einschließlich der (doch nicht begrenzt auf die) Qualitätsgarantie und die Garantie bezüglich Eignung für einen bestimmten Zweck. Hewlett-Packard haftet nicht für in dieser Dokumentation enthaltene Fehler oder für unbeabsichtigte oder indirekte Schäden in Verbindung mit der Lieferung, der Leistung oder der Benutzung der Ausrüstung. Hewlett-Packard übernimmt keine Haftung für den Betrieb oder die Zuverlässigkeit seiner Software, wenn diese auf Hardware benutzt wird, die nicht von Hewlett-Packard geliefert wurde. Dieses Dokument enthält proprietäre Informationen, die durch das Copyright geschützt sind. Alle Rechte vorbehalten. Dieses Dokument darf ohne vorherige schriftliche Genehmigung der Hewlett-Packard Company weder ganz noch teilweise fotokopiert, reproduziert oder übersetzt werden.

3Dlabs ist ein eingetragenes Warenzeichen. Oxygen und Powerthreads sind Warenzeichen der 3Dlabs, Inc. Ltd. OpenGL<sup>®</sup> ist ein eingetragenes Warenzeichen der Silicon Graphics, Inc. Windows<sup>®</sup>, Windows NT<sup>®</sup> sind eingetragenes Warenzeichen der Microsoft, Corp. ©1999. Matrox<sup>®</sup> ist ein eingetragenes Warenzeichen der Matrox Electronics Systems Limited.

## Avertissement

Les informations contenues dans ce document peuvent être modifiées sans préavis. Hewlett-Packard ne donne aucune garantie de quelque sorte que ce soit concernant, sans que ce soit limitatif, les garanties implicites de qualité commerciale de ce matériel, ou la bonne adaptation de celui-ci à un usage particulier. Hewlett-Packard n'est pas responsable des erreurs pouvant apparaître dans ce manuel et n'est pas non plus responsable des dommages directs ou indirects résultant de l'équipement, des performances et de l'utilisation de ce matériel. Hewlett-Packard ne saurait être tenu pour responsable de l'utilisation et de la fiabilité de son logiciel sur des matériels non fournis par Hewlett-Packard. Les informations contenues dans ce document sont originales et protégées par copyright. Tous droits réservés. L'acheteur s'interdit en conséquence de les photocopier, de les reproduire ou de les traduire dans toute autre langue, sauf accord préalable et écrit de Hewlett-Packard.

3Dlabs est une marques déposées. Oxygen and Powerthreads sont des marques déposées de 3Dlabs, Inc. Ltd. OpenGL<sup>®</sup> est une marques déposées de Silicon Graphics, Inc. Windows<sup>®</sup>, Windows NT<sup>®</sup> sont des marques déposées de Microsoft, Corp. ©1999. Matrox<sup>®</sup> est une marques déposées de Matrox Electronics Systems Limited.

## Aviso

La información contenida en este documento está sujeta a cambios sin previo aviso. Hewlett-Packard no ofrece ningún tipo de garantía con respecto a este material, incluyendo, pero sin limitarse a, las garantías implícitas de comerciabilidad e idoneidad para un fin determinado. Hewlett-Packard no asume responsabilidad alguna por los posibles errores contenidos o por los daños casuales o emergentes relacionados con el suministro, funcionamiento o uso de este material. Hewlett-Packard no asume responsabilidad alguna por el uso o fiabilidad de su software en equipos que no hayan sido fabricados por Hewlett-Packard. Este documento contiene información patentada, protegida por las leyes del copyright. Reservados todos los derechos. Ninguna parte de este documento puede ser fotocopiada, reproducida o traducida a otro idioma sin la autorización previa y por escrito de Hewlett-Packard Company.

3Dlabs es marca registrada. Oxygen and Powerthreads son marcas fábrica de 3Dlabs, Inc. Ltd. OpenGL<sup>®</sup> es marca registrada de Silicon Graphics, Inc. Windows<sup>®</sup>, Windows NT<sup>®</sup> son marcas registrada de Microsoft Corp. ©1999. Matrox<sup>®</sup> es marca registrada de Matrox Electronics Systems Limited.

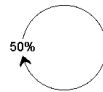
## Avviso

Le informazioni contenute in questo documento sono soggette a cambiamento senza preavviso. Hewlett-Packard non rilascia garanzie di alcun tipo riguardo a questo materiale, comprese le garanzie implicite di commerciabilità e di idoneità per uno scopo particolare. Hewlett-Packard non sarà ritenuta responsabile per errori contenuti in questo documento, né per danni accidentali o conseguenti alla fornitura, alle prestazioni o all'uso di questo materiale. Hewlett-Packard non si assume alcuna responsabilità riguardo all'uso o all'affidabilità del proprio software su apparecchiature di altri produttori. Questo documento contiene informazioni di proprietà protette da copyright. Tutti i diritti sono riservati. Nessuna parte di questo documento può essere fotocopiata, riprodotta o tradotta in un'altra lingua senza un precedente consenso scritto di Hewlett-Packard Company.

3Dlabs è un marchio registrato. Oxygen and Powerthreads sono marchi di 3Dlabs, Inc. Ltd. OpenGL<sup>®</sup> è un marchio registrato di Silicon Graphics, Inc. Windows<sup>®</sup>, Windows NT<sup>®</sup> sono marchio registrato di Microsoft, Corp. ©1999. Matrox<sup>®</sup> è un marchio registrato di Matrox Electronics Systems Limited.

Hewlett-Packard France, 38053 Grenoble, Cedex 9 France  
© 2000 Hewlett-Packard Company

---



**Paper not bleached with chlorine**

**Part Number:**

**Printed in 07/00**



**5969-3890**