

Many of the plants in the nursery are from wild collected sources. Our own collections are:-

- Nos. SF1-SF150..... Bhutan 1990
- Nos. SF Prefix 92 ..... Vietnam 1992
- Nos. SF220-SF440 ..... Yunnan, China 1993
- Nos. SF450-SF681 ..... Yunnan, China 1994
- Nos. SF Prefix 95 ..... Tibet 1995
- Nos. SF Prefix 96 ..... Yunnan, China 1996
- Nos. SF Prefix 99 ..... Tibet 1999
- Nos. SF Prefix 00 ..... Pakistan 2000
- Nos. SF Prefix 03 ..... Mongolia 2003
- Nos. SF Prefix 06 ..... Arunachal Pradesh, India 2006

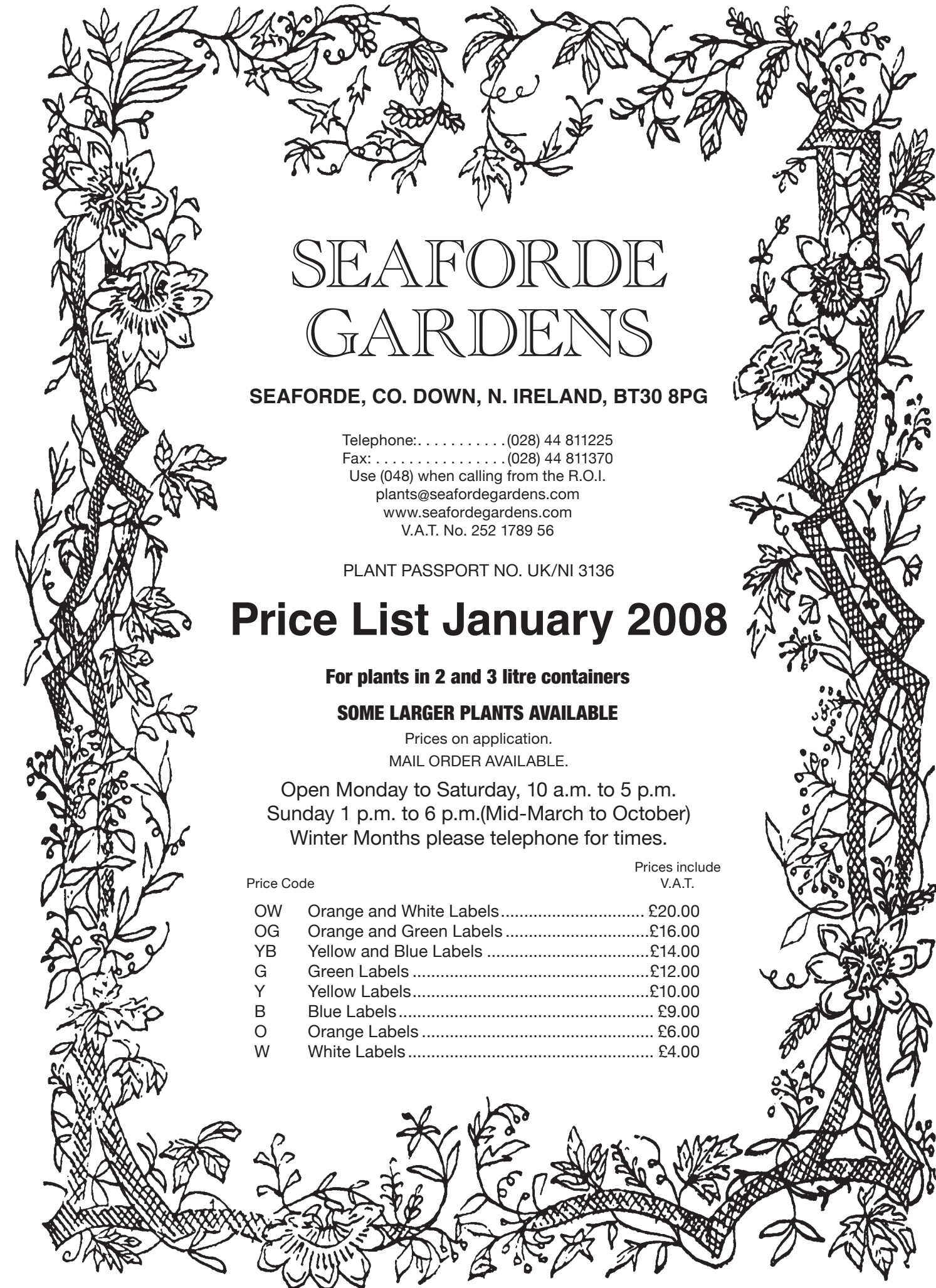
Visiting the gardens at Seaforde can be a perfect day out for all the family. The gardens date from the eighteenth century. The centrepiece of the gardens is a hornbeam maze which can also be viewed from the nearby mogul tower.

The gardens contain the national collection of eucryphias. Other plants in large numbers are rhododendrons, camellias, azaras, rambler roses, magnolias and hydrangeas to name just a few. This collection complements the nursery where many of the trees and shrubs can be bought.

The outer garden, known as the Pheasantry, contains large conifers and rhododendrons, many over 100 years old. In season one can see drifts of snowdrops, bluebells, camassias and primulas. Throughout the gardens peacocks roam.

There is also the tropical butterfly house to visit, which contains hundreds of free-flying exotic butterflies, as well as parrots, reptiles, and other creatures. There is a coffee shop and a children's playground.

*“So, to man the garden should be something without and beyond nature; a page from an old romance, a scene in fairyland, a gateway through which imagination lifting above the sombre realities of life may pass into a world of dreams.” Sir George Sitwell.*



# SEAFORDE GARDENS

SEAFORDE, CO. DOWN, N. IRELAND, BT30 8PG

Telephone:.....(028) 44 811225  
 Fax: .....(028) 44 811370  
 Use (048) when calling from the R.O.I.  
 plants@seafordegardens.com  
 www.seafordegardens.com  
 V.A.T. No. 252 1789 56

PLANT PASSPORT NO. UK/NI 3136

## Price List January 2008

**For plants in 2 and 3 litre containers**

**SOME LARGER PLANTS AVAILABLE**

Prices on application.  
 MAIL ORDER AVAILABLE.

Open Monday to Saturday, 10 a.m. to 5 p.m.  
 Sunday 1 p.m. to 6 p.m.(Mid-March to October)  
 Winter Months please telephone for times.

Price Code	Prices include V.A.T.
OW Orange and White Labels.....	£20.00
OG Orange and Green Labels.....	£16.00
YB Yellow and Blue Labels.....	£14.00
G Green Labels.....	£12.00
Y Yellow Labels.....	£10.00
B Blue Labels.....	£9.00
O Orange Labels.....	£6.00
W White Labels.....	£4.00

Abies chayuensis SF 95158..... G	Camellia ‘Golden Spangles’.....Y	Fagus americana .....Y	Magnolia ‘Susan’..... G	Rhododendron corrianum SF 99067..... YB	Rhododendron Hybrid ‘Scarlet Wonder’ .....Y
Abies chayuensis SF 95225 ..... G	Camellia ‘Haku-Rakuten’ .....Y	Fagus sylvatica ‘Black Swan’ ..... G	Magnolia virginiana..... G	Rhododendron edgeworthii ..... YB	Rhododendron Hybrid ‘Shamrock’ .....Y
Abutiloin vitafolium .....Y	Camellia ‘J.C. Williams’.....Y	Fagus sylvatica ‘Dawcyk’ ..... G	Mahonia ‘Lionel Fortescue’.....B	Rhododendron excellens KR 7616 ..... OG	Rhododendron Hybrid ‘Silver Sixpence’.....Y
Acacia bailiana .....Y	Camellia ‘Jupiter’ .....Y	Fagus sylvatica ‘Heterophylla’..... G	Metasequoia glyptostroesides .....Y	Rhododendron falconeri ..... OG	Rhododendron Hybrid ‘Snipe’.....Y
Acacia bourmanii .....Y	Camellia ‘Jury’s Yellow’ .....Y	Fagus sylvatica ‘Red Obelisk’ ..... G	Michaelia maudii ..... OG	Rhododendron fastigiatum..... YB	Rhododendron Hybrid ‘Titian Beauty’.....Y
Acacia dealbata .....Y	Camellia ‘Lady Clare’ .....Y	Fagus sylvatica fastigiata aurea ..... G	Myrteola numularifolia .....Y	Rhododendron heliolepis SF 95053 .....Y	Rhododendron Hybrid ‘Unique’.....Y
Acer campbellii SF06041..... YB	Camellia ‘Lady Clare’ .....Y	Fascicularia bicolor .....Y	Myrtus lechleriana .....Y	Rhododendron impeditum ‘Blue Steer’.....Y	Rhododendron Hybrid ‘Venetian Chimes’ ...Y
Acer truncatum.....Y	Camellia ‘Marguerite Gouillon’.....Y	Fatsia japonica .....Y	Myrtus luma.....B	Rhododendron macabeanum ..... OG	Rhododendron Hybrid ‘Wally Millar’.....Y
Actinidia kolomikta .....Y	Camellia ‘Noblissima’.....Y	Forsythia ‘Lynwood’ .....B	Myrtus luma ‘Variegata’ .....B	Rhododendron microphylla .....Y	Rhododendron Hybrid ‘Youthful Sin’.....Y
Aesculus octandra ..... G	Camellia ‘Roger Hall’ .....Y	Fremontodendron ‘Californium Glory’ ..... G	Myrtus obcordata .....Y	Rhododendron oreothrepes ..... YB	Ribes gordonianum .....B
Aesculus turbinata ..... G	Carpinus betulus .....Y	Fuchsia magellanica ‘Aurea’..... O		Rhododendron ovatum CNW 548 .....Y	Ribes speciosum .....Y
Agapanthus ‘Africanus’..... O	Ceanothus ‘Cynthia Postan’.....B		Nandia domestica .....Y	Rhododendron polyandrum..... YB	Rosa ‘Brenda Colvin’.....B
Agapanthus ‘Streamline’ ..... O	Ceanothus ‘Gloire de Versailles’.....Y	Griselinea dependens.....Y	Nothofagus dombeyii .....Y	Rhododendron pubocostatum..... YB	Rosa ‘Paul’s Himalayan Musk’.....B
Amalancier canadensis .....B	Ceanothus ‘Yankee Point’ .....B	Gunnera Manicata .....Y	Nothofagus obliqua .....Y	Rhododendron rigidum ..... YB	Rosa rubus .....B
Araraucaria araucana.....B	Ceanothus arboreus ‘Trewithen Blue’ .....Y			Rhododendron scopulorum SF 99032..... YB	Rubus tridel ‘Benenden’ .....B
Arbutus unedo ..... G	Cedrus deodora ..... G	Hamamellis x mollis ..... G	Olearia ‘Comber’s Pink’.....Y	Rhododendron sicutense ..... YB	
Astelia ‘Silver Spear’ .....Y	Ceratostigma griffithii ‘Alba’ SF 149 .....Y	Hamamellis ‘Diane’..... G	Olearia nummularifolia .....B	Rhododendron spaeroblastum wumminshan YB	Salix cardinalis ..... O
Azalea ‘Antelope’ .....Y	Choisia ternata ..... O	Hamamellis ‘Jelena’ ..... G	Olearia odorata .....B	Rhododendron spinuliferum SF 471 ..... YB	Sambucus nigra ‘Aureomarginata’.....B
Azalea ‘Delicatissima’ .....Y	Clematis montana ‘Alba’ .....B	Hebe ‘Midsummer Beauty’ .....B	Olearia paniculata .....Y	Rhododendron tricocladum ..... YB	Santolina chamaecypariss .....W
Azalea ‘Golden Eagle’ .....Y	Coprosma ‘Beaton’s Gold’ .....B	Hebe rakiensis.....W		Rhododendron triflorum SF 95055.....Y	Sarcococca confusa.....B
Azalea ‘Irene Koster’ .....Y	Cordyline australis.....B	Hoheria sextylosa .....B	Paeonia lutea ‘Ludlowii’.....Y	Rhododendron yakusimanum .....Y	Schima khasiana .....OW
Azalea ‘Old Gold’.....Y	Cordyline australis ‘Pink Stripe’ .....Y	Hydrangea petiolaris .....Y	Parrotia persica ..... G	Rhododendron zalcucum..... YB	Sequoia sempervirens .....Y
Azalea pontica.....Y	Cordyline banksii..... OG	Hydrangea seemanii .....Y	Phormium tenax.....Y	Rhododendron Hybrid ‘Augfast’.....Y	Skimmia ‘Redruth’ .....B
Azalea ‘Soir de Paris’ .....Y	Cornus ‘Eddies White Wonder’..... G	Hydrangea ‘Teller’s White’ .....Y	Phormium tenax ‘Flamingo’ .....Y	Rhododendron Hybrid ‘Berg’s Yellow’ .....Y	Skimmia mica .....Y
Azalea ‘Sunte Nectarine’ .....Y	Cornus alba .....Y	Hydrangea villosa.....Y	Phormium tenax ‘Rainbow Maiden’.....Y	Rhododendron Hybrid ‘Blue Ribbon’ .....Y	Solanum crispum ‘Glasnevin’ .....Y
Azalea ‘Vinecourt Dove’.....Y	Cornus alternifolia variegata..... G	Hypericum ‘Hidcote’ .....W	Phormium tenax ‘Yellow Wave’.....Y	Rhododendron Hybrid ‘Bow Bells’.....Y	Sophora tetraptera .....Y
Azalea ‘White Throat’ .....Y	Cornus canadensis ..... G		Photinia davidiana ‘Palette’..... G	Rhododendron Hybrid ‘Brown Eyes’.....Y	Sorbaria SF 95205 .....B
Azara serrata .....Y	Cornus contraversa variegata ..... G	Ilex x altaclerensis ‘Golden King’.....B	Physocarpus opulifolius ‘Lutea’ .....B	Rhododendron Hybrid ‘Carmen’ .....Y	Spirea arguta .....B
Azara serrata ‘Alpina’.....Y	Cornus kousa ‘Chinensis’.....Y	Ilex aquifolium ‘Ferox Argentia’ .....B	Picea smithiana SF 00002 ..... G	Rhododendron Hybrid ‘Countess of Haddington’ ..... YB	Stuartia pseudocamellia ..... OG
	Cornus ‘Ormondii’ ..... G	Itea illicifolia .....Y	Pieris ‘Carnival’.....Y	Rhododendron Hybrid ‘Curlew’.....Y	Syringa x josiflexa ‘Bellicent’.....B
Berberis SF06008..... O	Corokia macrocarpa .....B		Pieris ‘Forest Flame’.....Y	Rhododendron Hybrid ‘Cynthia’ .....Y	
Beschorneria yuccoides..... YB	Corokia x virgata .....Y	Kalmia latifolia ‘Minuet’ .....Y	Pieris formosa ‘Wakehurst’ .....Y	Rhododendron Hybrid ‘Fastuosum Flora Plena’ Y	Taxodium ascendens .....Y
Betula albo-sinensis .....Y	Cotoneaster horizontalis ‘Variegatus’ ..... O	Kalmia latifolia ‘Ostibo Red’ .....Y	Pieris ‘Mountain Fire’ .....Y	Rhododendron Hybrid ‘Fragrantissimum’...Y	Taxus baccata .....B
Buxus sempervirens .....W	Crinodendron (see Tricuspidaria).....	Koelreutaria paniculata ..... YB	Pinus wallichiana SF 00001 .....Y	Rhododendron Hybrid ‘Gartendirektor Glocker’ Y	Taxus baccata ‘Fastigiata Aureomarginata’...Y
Buxus sempervirens ‘Aureovariegata’..... O			Piptanthus tibetica.....Y	Rhododendron Hybrid ‘Gomer Waterer’ ....Y	Taxus baccata ‘Fastigiata’.....Y
	Daphne odora aureomarginata.....Y	Laurus nobilis ..... O	Pittosporum tenuifolium ‘Elizabeth’.....Y	Rhododendron Hybrid ‘Grand Slam’.....Y	Taxus baccata ‘Standishii’ .....Y
Caldcluvia paniculata ..... OG	Desfontainia spinosa .....Y	Leptospermum rodmanwayanum (grandiflorum). O	Pittosporum tenuifolium ‘Eugeniodes Variegatum’ .Y	Rhododendron Hybrid ‘Hoppy’ .....Y	Thuya orientalis aurea nana .....B
Callistemon citrinus ‘Red Cluster’ .....B	Dodonea viscosa ‘Purpurea’..... G	Leptospermum scoparium ‘Autumn Glory’ .. O	Pittosporum tenuifolium ‘John Flanagan’ ...Y	Rhododendron Hybrid ‘Jacksonii’ .....Y	Trachycarpus fortunei.....Y
Callistemon rigidus .....B	Drimys winteri ‘Latifolia’.....Y	Leptospermum scoparium ‘Crimson Glory’.. O	Pittosporum tenuifolium ‘Lockshill Gold’...Y	Rhododendron Hybrid ‘Lady Alice Fitzwilliam’ . ..... YB	Tricuspidaria dependens ..... YB
Callistemon salignus .....B		Lindera benzoin ..... OG	Pittosporum tenuifolium ‘Silver Queen’.....Y	Rhododendron Hybrid ‘Lem’s 45’.....Y	Tricuspidaria lanceolata ..... YB
Camassia .....W	Embothrium ‘Inca Flame’ ..... YB	Liquidambers ‘Worlponston’ ..... G	Pittosporum tenuifolium ‘Tom Thumb’.....Y	Rhododendron Hybrid x loderi ‘King George’YB	Tricuspidaria lanceolata ‘Ada Hoffman’ ...YB
Camellia ‘Adolph Audussant’ .....Y	Embothrium lanceolatum ..... YB	Liriodendron tulipifera..... YB	Pittosporum tenuifolium ‘Warnham Gold’...Y	Rhododendron Hybrid ‘Lord Roberts’ .....Y	
Camellia ‘Anticipation’.....Y	Escallonia ‘Iveyi’ ..... O	Lonicera nitida ‘Baggesen’s Gold’ .....W	Plumbago capensis .....Y	Rhododendron Hybrid ‘Madam Masson’.....Y	
Camellia ‘Black Tie’.....Y	Eucalyptus Globulus ..... YB		Pseudowinteri colorata .....Y	Rhododendron Hybrid ‘Marketa’s Prize’ .....Y	Weigelia florida ‘Aureovariegata’.....B
Camellia ‘Blood of China’ .....Y	Eucryphia cordifolia .....Y	Magnolia ‘Butterflies’..... G		Rhododendron Hybrid ‘May Day’ .....Y	Weigelia florida ‘Eva Rathke’ .....B
Camellia ‘Bob’s Tinsie’ .....Y	Eucryphia cordifolia x lucida .....Y	Magnolia campbellii ..... YB	Quercus frainetto .....Y	Rhododendron Hybrid ‘Nova Zembla’ .....Y	Weigelia florida ‘Follis Purpurea’ .....B
Camellia ‘Brushfield Yellow’.....Y	Eucryphia x intermedia ‘Rostrevor’..... YB	Magnolia denudata ..... OG	Quercus suber ..... G	Rhododendron Hybrid ‘Paprika Spice’ .....Y	Wisteria sinensis .....Y
Camellia ‘Contessa Lavina Maggii’ .....Y	Eucryphia lucida .....Y	Magnolia ‘Galaxy’ ..... G		Rhododendron Hybrid ‘Patty Bee’ .....Y	Wisteria sinensis ‘Alba’.....Y
Camellia ‘Cornish Clay’.....Y	Eucryphia lucida ‘Ballerina’..... YB	Magnolia grandiflora ‘Victoria’ ..... G	Rhododendron augustinii ..... YB	Rhododendron Hybrid ‘Polar Bear’ ..... YB	Wisteria sinensis ‘Blue Sapphire’ .....Y
Camellia ‘Debbie’.....Y	Eucryphia lucida ‘Pink Cloud’ ..... YB	Magnolia x leobneri ‘Dr. Merrill’..... YB	Rhododendron bureau SF 517 ..... YB	Rhododendron Hybrid ‘Praecox’.....Y	Woodwardia radicans .....Y
Camellia ‘Donation’ .....Y	Eucryphia x nymansensis ‘Nymansay’ .....Y	Magnolia x leobneri ‘Leonard Messel’ ..... G	Rhododendron calophytum ..... YB	Rhododendron Hybrid ‘Ring of Fire’.....Y	
Camellia ‘E.T. Carlyon’ .....Y	Euonmous ‘Gaity Girl’ .....B	Magnolia ‘Raspberry Ice’ ..... G	Rhododendron calostrotum ‘Gisha’.....Y	Rhododendron Hybrid ‘Sappho’.....Y	Yucca alleofolia .....Y
Camellia ‘Elsie Jury’.....Y	Eupatorium micranthum.....Y	Magnolia stellata ..... G	Rhododendron calostrotum SF 357.....Y		
Camellia ‘Freedom Bell’.....Y		Magnolia stellata ‘Rosea’ ..... G	Rhododendron cerasinum SF 95057 .....Y		