

**LJPZ — PORTOROŽ/SEČOVLJE****LJPZ AD 2.1 AERODROME LOCATION INDICATOR AND NAME****LJPZ — PORTOROŽ/SEČOVLJE****LJPZ AD 2.2 AERODROME GEOGRAPHICAL AND ADMINISTRATIVE DATA**

1	<i>ARP coordinates and site at AD</i>	45 28 24.05 N 013 36 53.91 E; 486 M BRG 151° GEO from THR 15
2	<i>Direction and distance from (city)</i>	160°; 6 KM from Portorož
3	<i>Elevation/Reference temperature</i>	2 M (7 FT) / 26° C (JUL), WGS-84 geoid undulation: 44.4 M (146 FT)
4	<i>MAG VAR/Annual change</i>	1° E (1990) / -
5	<i>AD Administration</i> <i>Address</i> <i>Telephone</i> <i>Telefax</i> <i>AFS</i> <i>SITA</i> <i>E-mail</i> <i>URL</i>	Post: AERODROM PORTOROŽ SEČOVLJE 19 SI-6333 SEČOVLJE Tel: +386 5 6175 140 Fax: +386 5 6722 530 AFS: LJPZZPX (ARO) SITA: POWAPXH Email: <a href="mailto:info@portoroz-airport.si">info@portoroz-airport.si</a> URL: <a href="http://www.portoroz-airport.si">http://www.portoroz-airport.si</a>
6	<i>Types of traffic permitted (IFR/VFR)</i>	IFR / VFR
7	<i>Remarks</i>	Nil

**LJPZ AD 2.3 OPERATIONAL HOURS**

←	1	<i>AD Administration</i>	MON-SUN: 0700 - 1530, (0630 - 1800)
	2	<i>Customs and immigration</i>	Custom: as AD Administration and O/R Immigration: as AD Administration and O/R
	3	<i>Health and sanitation</i>	Health: During service HR of AD; Doctor and Medical Technician Outside service HR of AD; Medical Technician is available Sanitary: O/R
	4	<i>ATS Reporting Office (ARO)</i>	as AD Administration Tel: +386 5 6175 500 Fax: +386 5 6722 520 Email: <a href="mailto:aro.pz@sloveniacontrol.si">aro.pz@sloveniacontrol.si</a>
	5	<i>MET Office</i>	<a href="#">See LJPZ AD 2.11</a> ; Observations each 1/2 H
	6	<i>ATS</i>	see <a href="#">LJPZ AD 2.18</a>
	7	<i>Fuelling</i>	as AD Administration
	8	<i>Handling</i>	as AD Administration
	9	<i>Security</i>	as AD Administration
	10	<i>De-icing</i>	Nil
	11	<i>Remarks</i>	1.) Outside service hours services are available O/R. Requests are to be submitted at least 24 HR before ETA or ETD. 2.) ARO is responsible for AIS Briefing

**LJPZ AD 2.4 HANDLING SERVICES AND FACILITIES**

1	<i>Cargo handling facilities</i>	None
2	<i>Fuel/oil types</i>	100 LL, JET A-1 / AERO SHELL W 15, W50
3	<i>Fuelling facilities/capacity</i>	Fuel pump with hose length 25 M
4	<i>De / anti-icing facilities</i>	None
5	<i>Hangar space for visiting aircraft</i>	1 Hangar 400 M <sup>2</sup> , Door 4.5 M x 15 M
6	<i>Repair facilities for visiting aircraft</i>	Available, Hangar: 300 M <sup>2</sup>
7	<i>Remarks</i>	Nil

**LJPZ AD 2.5 PASSENGER FACILITIES**

1	<i>Hotels</i>	Portorož - 6 KM
2	<i>Restaurants</i>	At the AD, Portorož
3	<i>Transportation</i>	Bus, Taxi, Rent-a-Car
4	<i>Medical facilities</i>	First Aid Treatment at the AD, Hospital in Izola
5	<i>Bank and Post Office</i>	Exchange at the AD, Post 200 M from the AD
6	<i>Tourist Office</i>	AD INFO
7	<i>Remarks</i>	Nil

**LJPZ AD 2.6 RESCUE AND FIRE FIGHTING SERVICES**

1	<i>AD category for fire fighting</i>	Declared CAT 2 - O/R facilities up to CAT 4, at least 12H prior to the flight
2	<i>Rescue equipment</i>	No boats
3	<i>Capability for removal of disabled aircraft</i>	Nil
4	<i>Remarks</i>	Nil

**LJPZ AD 2.7 SEASONAL AVAILABILITY - CLEARING**

1	<i>Types of clearing equipment</i>	None
2	<i>Clearance priorities</i>	None
3	<i>Remarks</i>	Nil

**LJPZ AD 2.8 APRONS, TAXIWAYS AND CHECK LOCATIONS DATA**

1	<i>Apron surface and strength</i>	Surface: ASPH, Strength: PCN 35/F/C/X/T
2	<i>Taxiway width, surface and strength</i>	A - Width: 7.5 M, Surface: ASPH, Strength: PCN 25/F/C/X/T B - Width: 15 M, Surface: ASPH, Strength: PCN 35/F/C/X/T C - Width: 7.5 M, Surface: ASPH, Strength: PCN 25/F/C/X/T F - Width: 7.5 M, Surface: ASPH, Strength: PCN 35/F/C/X/T
3	<i>ACL location and elevation</i>	Location: at Apron, Elevation: 2 M
4	<i>VOR/INS checkpoint</i>	VOR: None, INS: See AD Chart <a href="#">LJPZ AD 2.24.1-1</a>
5	<i>Remarks</i>	1.) For General Aviation grass parking is available

**LJPZ AD 2.9 SURFACE MOVEMENT GUIDANCE AND CONTROL SYSTEM AND MARKINGS**

1	<i>Use of aircraft stand ID signs, TWY guide lines and visual docking/parking guidance system of aircraft stands</i>	Moped "Follow Me", Marshaller, Stop signs and Destination sign to THR
2	<i>RWY and TWY markings and LGT</i>	Marking Aids; see Aerodrome Chart <a href="#">LJPZ AD 2.24.1-1</a>
3	<i>Stop bars</i>	Yes, TWY B, TWY A
4	<i>Remarks</i>	Indicators and Ground Indicator Devices WDI

**LJPZ AD 2.10 AERODROME OBSTACLES**

1	<i>References</i>	see Instrument and Visual Approach Charts
2	<i>Remarks</i>	Aerodrome obstacles table is in course of preparation

**LJPZ AD 2.11 METEOROLOGICAL INFORMATION PROVIDED**

1	<i>Responsible unit</i>	MET office at AD: Tel: +386 5 6179 120 Fax: +386 5 6179 124 Email: <a href="mailto:dezurni.portoroz@arso.gov.si">dezurni.portoroz@arso.gov.si</a>
2	<i>Hours of service</i>	MON-SUN: 04:45 - 21:30, (03:45 - 20:30)* and O/R at least 24 HR before ETA/ETD
3	<i>Office responsible for TAF preparation</i> <i>Periods of validity</i> <i>Interval of issuance</i>	MET office at AD LJUBLJANA 00-09; 03-12; 06-15; 09-18; 12-21; 15-24 3 HR
4	<i>Type of landing forecast</i> <i>Interval of issuance</i>	-
5	<i>Briefing or consultation</i>	Telephone, 0000 - 2400, (MET Office at AD LJUBLJANA)
6	<i>Flight documentation</i> <i>Language(s) used</i>	Charts; MET Reports English/Slovene
7	<i>Charts and other INFO AVBL</i>	S, U, P, W, T, SWC
8	<i>Supplementary EQPT AVBL for INFO</i>	Satellite and Weather Radar pictures and animation
9	<i>Additional information</i>	for more INFO see <a href="#">GEN 3.5</a>
10	<i>Remarks</i>	* During "legal summer time" see <a href="#">GEN 2.1.2</a>

**LJPZ AD 2.12 RUNWAY PHYSICAL CHARACTERISTICS**

RWY NR	TRUE&MAG BRG	Dimensions of RWY (M)	Strength (PCN) and surface of RWY and SWY	THR coordinates RWY end coordinates THR Geoid undulation	THR elevation and highest elevation of TDZ of precision APP RWY	RWY/SWY Slope
1	2	3	4	5	6	7
15	151.21° GEO 150° MAG	1200 x 30	35/F/C/X/T ASPH	45 28 37.84 N 013 36 43.14 E 45 28 03.76 N 013 37 09.75 E GUND 44.4 M	THR 1.6 M -	-
33	331.21° GEO 330° MAG	1200 x 30	35/F/C/X/T ASPH	45 28 10.28 N 013 37 04.66 E <b>displaced THR</b> - GUND 44.4 M	THR 1.9 M -	-

RWY NR	SWY (M)	CWY (M)	Strip (M)	OFZ	Remarks
1	8	9	10	11	12
15	-	-	1320 x 80	-	-
33	-	-	1320 x 80	-	• Threshold 33 is displaced

**LJPZ AD 2.13 DECLARED DISTANCES**

RWY	TORA (M)	TODA (M)	ASDA (M)	LDA (M)	Remarks
1	2	3	4	5	6
15	1200	1200	1200	1200	Nil
33	1200	1200	1200	970	Nil

**LJPZ AD 2.14 APPROACH AND RUNWAY LIGHTING**

RWY	APCH LGT type LEN INTST	THR LGT colour WBAR	VASIS (MEHT) PAPI	TDZ, LGT LEN	RWY Centre Line LGT Length, spacing colour, INTST
1	2	3	4	5	6
15	R VRB LIL W VRB LIH	G VRB LIH	PAPI 3.5° (33 FT)	-	-
33	-	-	-	-	-

RWY	RWY edge LGT LEN, spacing colour, INTST	RWY End LGT colour WBAR	SWY LGT LEN (M) colour	Remarks
1	7	8	9	10
15	W VRB LIH YCZ last 400 M	R VRB LIH	-	Nil
33	W VRB LIH YCZ last 400 M	R VRB LIH	-	Nil

**LJPZ AD 2.15 OTHER LIGHTING, SECONDARY POWER SUPPLY**

1	ABN/IBN location, characteristics and hours of operation	-
2	LDI location and LGT Anemometer location and LGT	- Anemometer: 270 M S (180 deg.) from THR 15, not lighted
3	TWY edge and centre line lighting	edge: TWY B, apron
4	Secondary power supply/switch-over time	Yes / 10 SEC
5	Remarks	see Aerodrome Chart <a href="#">LJPZ AD 2.24.1-1</a>

**LJPZ AD 2.16 HELICOPTER LANDING AREA**

Nil

**LJPZ AD 2.17 AIR TRAFFIC SERVICES AIRSPACE**

1	Designation and lateral limits	PORTOROŽ CTR within: Circle of 5 NM centred on point 45 28 24.07 N 013 36 53.92 E entering Croatian airspace
2	Vertical limits	GND - 4000 FT MSL
3	Airspace classification	D
4	ATS unit call sign Language(s)	Portorož Tower (TWR) English/Slovene
5	Transition altitude	10500 FT MSL
6	Remarks	1.) TMA PORTOROŽ see <a href="#">ENR 2.1.13</a>

**LJPZ AD 2.18 ATS COMMUNICATION FACILITIES**

Service designation	ID (call sign)	Frequency (MHZ)	Hours of operation	Remarks
1	2	3	4	5
APP	Portorož Approach	124.875 129.800	same as TWR	<ul style="list-style-type: none"> <li>• VDF is available only during the operational HR of ATS. Large disturbances between 250 and 330 degrees. Unusable in this sector.</li> <li>• Outside SVC HR: LJLJ APP is responsible for ATS on FREQ 135.275 MHZ, 136.000 MHZ or FIC Ljubljana 118.475 MHZ</li> </ul>
TWR	Portorož Tower	124.875 129.800	MON - SUN: 0700 - 1500 (0630 - 1800) and O/R at least 24 HR before ETA or ETD.	<ul style="list-style-type: none"> <li>• VDF is available only during the operational HR of ATS. Large disturbances between 250 and 330 degrees. Unusable in this sector.</li> <li>• For Emergency FREQ see <a href="#">ENR 2.1.1</a></li> </ul>

**LJPZ AD 2.19 RADIO NAVIGATION AND LANDING AIDS**

Type of aid, CAT of ILS (VAR)	ID	Frequency	Hours of operation	Site of transmitting antenna coordinates	Elevation of DME antenna	Remarks
1	2	3	4	5	6	7
L	PZ	388 KHZ	H24	45 28 38.88 N 013 36 53.71 E	3 M (10 FT)	Nil

**LJPZ AD 2.20 LOCAL TRAFFIC REGULATIONS****1 AEROBATICS**

1.1 Aerobatics in CTR Portorož is permitted only outside inhabited area, above 4000 FT MSL.

**LJPZ AD 2.21 NOISE ABATEMENT PROCEDURES****1 NOISE RESTRICTIONS**

1.1 Aircraft without noise certificate for maximum 73.9 dB are limited to maximum 4 flights per hour. This restriction applies on Saturdays, Sundays and national holidays from 13.00 LT to 15.00 LT.

**LJPZ AD 2.22 FLIGHT PROCEDURES****1 PROCEDURES FOR IFR FLIGHTS WITHIN TMA PORTOROŽ**

1.1 Outside operational hours of APP PORTOROŽ and TWR PORTOROŽ the Airspace classification of [TMA PORTOROŽ](#) and [CTR PORTOROŽ](#) is the same as the airspace classification of [TMA DOLSKO 1](#).

Before entering the airspace defined as TMA PORTOROŽ and CTR PORTOROŽ, pilots shall contact APP PORTOROŽ 124.875 MHZ, 129.800 MHZ. If no reply pilots shall contact APP LJUBLJANA 135.275 MHZ, 136.000 MHZ or FIC LJUBLJANA 118.475 MHZ and check the operational hours of APP PORTOROŽ.

1.2 The approach, holding and departure procedures are based on the provisions contained in the following ICAO Documents:

- ICAO Annex 6 - Operation of Aircraft
- ICAO Annex 14 - Aerodromes
- Doc 4444 - RAC/501 - Rules of the Air and Air Traffic Services (PANS-RAC)
- Doc 8168 - OPS/611 - Aircraft Operations (PANS-OPS), Volume I and II

**2 PROCEDURES FOR VFR FLIGHTS ENTERING TMA PORTOROŽ**

2.1 VFR flights shall enter [TMA PORTOROŽ](#) via following entry points: VICKY, BUGEV, PE1, PW1, PS1

2.2 VFR flights entering via the above mentioned entry points, shall as soon as practicable establish radio contact with "PORTOROŽ APPROACH".

### 3 PROCEDURES FOR VFR FLIGHTS ENTERING CTR PORTOROŽ

3.1 Two way radio communication required. Contact TOWER 5 MIN before reaching first reporting point.

3.2 VFR flights shall enter [CTR PORTOROŽ](#) as follows:

Reporting point		Definition
from Northeast:	VICKY	45 37 43.97 N 013 33 15.45 E - and then to follow PN1
	PN1	City of Piran
from East	PE1	Village Črni Kal - and then to follow PE2
	PE2	Harbour of Koper
from South:	PS1	Buje Church
from West	PW1	City of Umag

3.3 Use Chart LJPZ AD 2-12 for identifying the reporting points and entering procedures.

## LJPZ AD 2.23 ADDITIONAL INFORMATION

### 1 CAUTION

1.1 No visual contact between TWR and ACFT near THR 33. Caution advised during landing and take-off.

### 2 BIRD CONCENTRATION IN THE VICINITY OF THE AERODROME

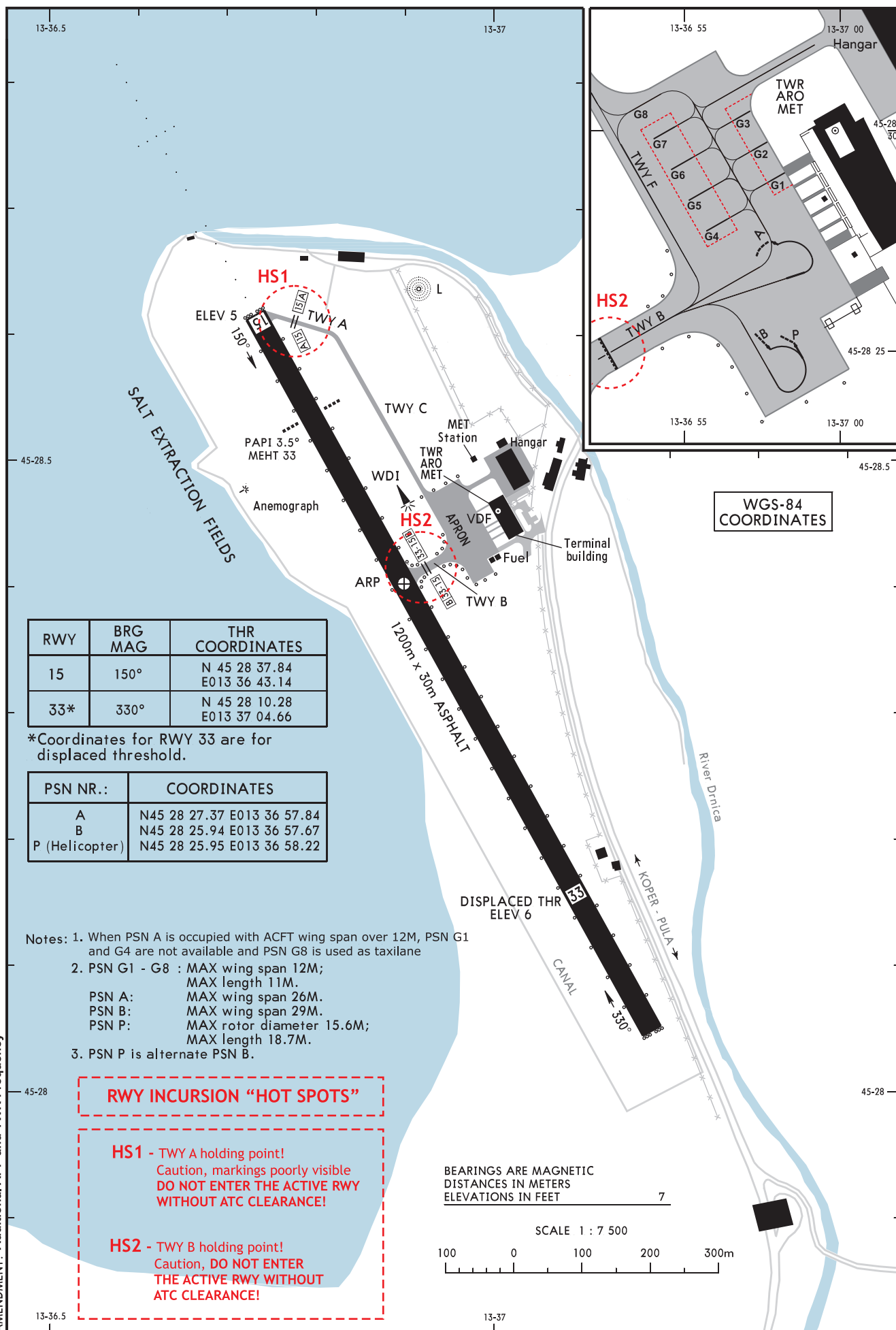
Sea bird strike hazard present throughout the whole year.

## LJPZ AD 2.24 CHARTS RELATED TO AN AERODROME

LJPZ AD 2.24.1-1	Aerodrome Chart and Parking Chart - ICAO ( <a href="#">see page LJPZ AD 2.24.1-1</a> )
LJPZ AD 2.24.4-1	Instrument Arrival Chart - ICAO ( <a href="#">see page LJPZ AD 2.24.4-1</a> )
LJPZ AD 2.24.5-1	Instrument Departure Chart - ICAO ( <a href="#">see page LJPZ AD 2.24.5-1</a> )
LJPZ AD 2.24.5-2	Instrument Departure Routes - Instrument (RWY15/33) ( <a href="#">see page LJPZ AD 2.24.5-2</a> )
LJPZ AD 2.24.5-3	Instrument Departure Chart - ICAO ( <a href="#">see page LJPZ AD 2.24.5-3</a> )
LJPZ AD 2.24.5-4	Instrument Departure Routes - Instrument (RWY15/33) ( <a href="#">see page LJPZ AD 2.24.5-4</a> )
LJPZ AD 2.24.5-5	Instrument Departure Chart - ICAO ( <a href="#">see page LJPZ AD 2.24.5-5</a> )
LJPZ AD 2.24.5-6	Instrument Departure Routes - Instrument (RWY33) ( <a href="#">see page LJPZ AD 2.24.5-6</a> )
LJPZ AD 2.24.6-1	Instrument Approach Chart - ICAO ( <a href="#">see page LJPZ AD 2.24.6-1</a> )
LJPZ AD 2.24.7-1	Visual Approach Chart ( <a href="#">see page LJPZ AD 2.24.7-1</a> )

AERODROME CHART AND  
PARKING CHART - ICAON45 28 24.05  
E013 36 53.91AD ELEV 7 FT  
VAR 1.0 ° E (1990)

APP	124.875
	129.800
TOWER	124.875
	129.800

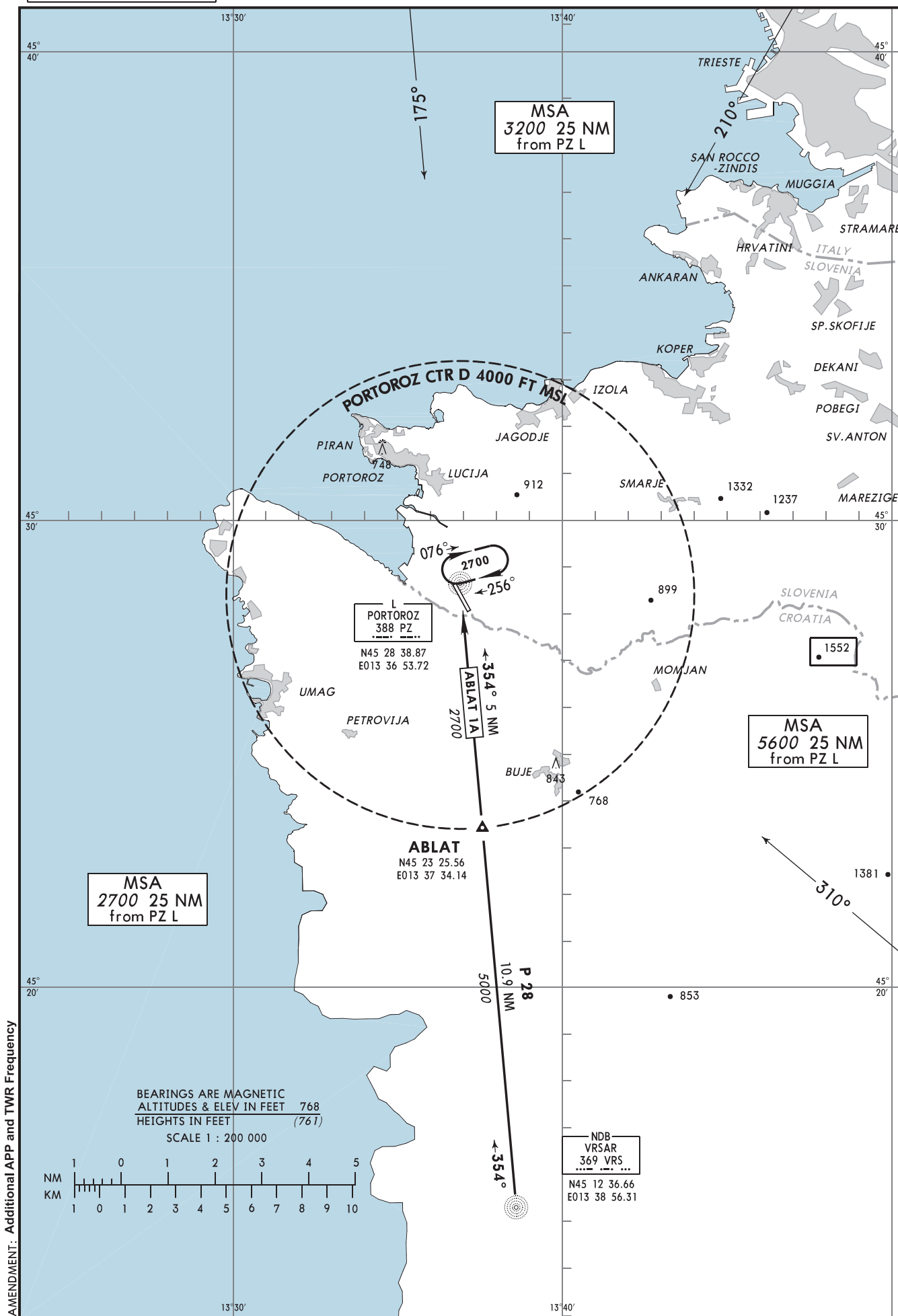
PORTOROZ, Portoroz  
SLOVENIA

PAGE INTENTIONALLY LEFT BLANK



STANDARD ARRIVAL CHART -  
INSTRUMENT (STAR) - ICAOTRANSITION ALTITUDE  
10500'AD ELEV 7 FT  
VAR 1.0°E

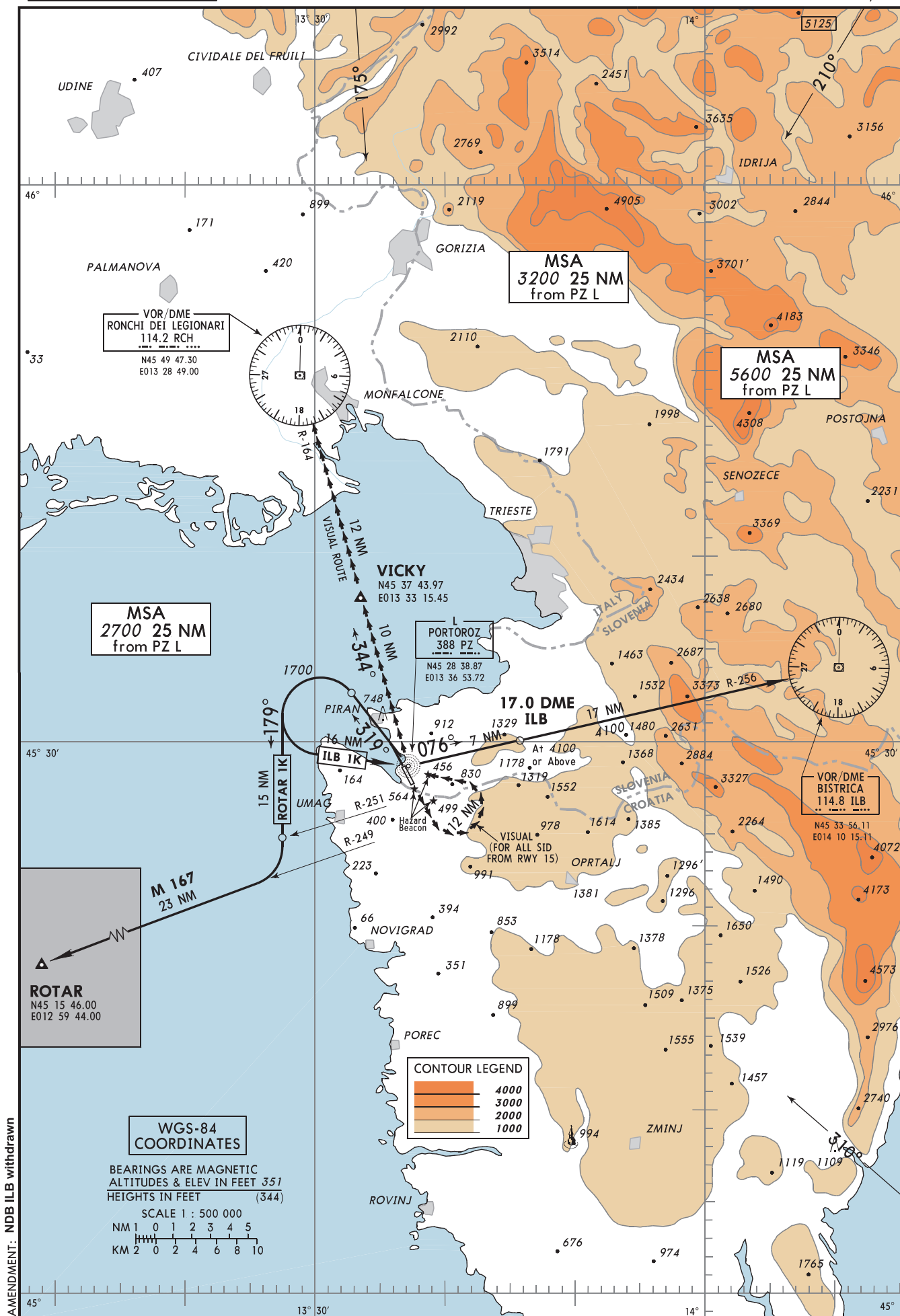
APP	124.875
	129.800
TOWER	124.875
	129.800

PORTOROZ, Portoroz  
SLOVENIA  
STAR RWY 15

PAGE INTENTIONALLY LEFT BLANK

STANDARD DEPARTURE CHART -  
INSTRUMENT (SID) - ICAOTRANSITION ALTITUDE  
10500AD ELEV 7 FT  
VAR 1.0°E

APP	124.875
	129.800
TOWER	124.875
	129.800

PORTOROZ, Portoroz  
SLOVENIA  
SID RWY 15/33

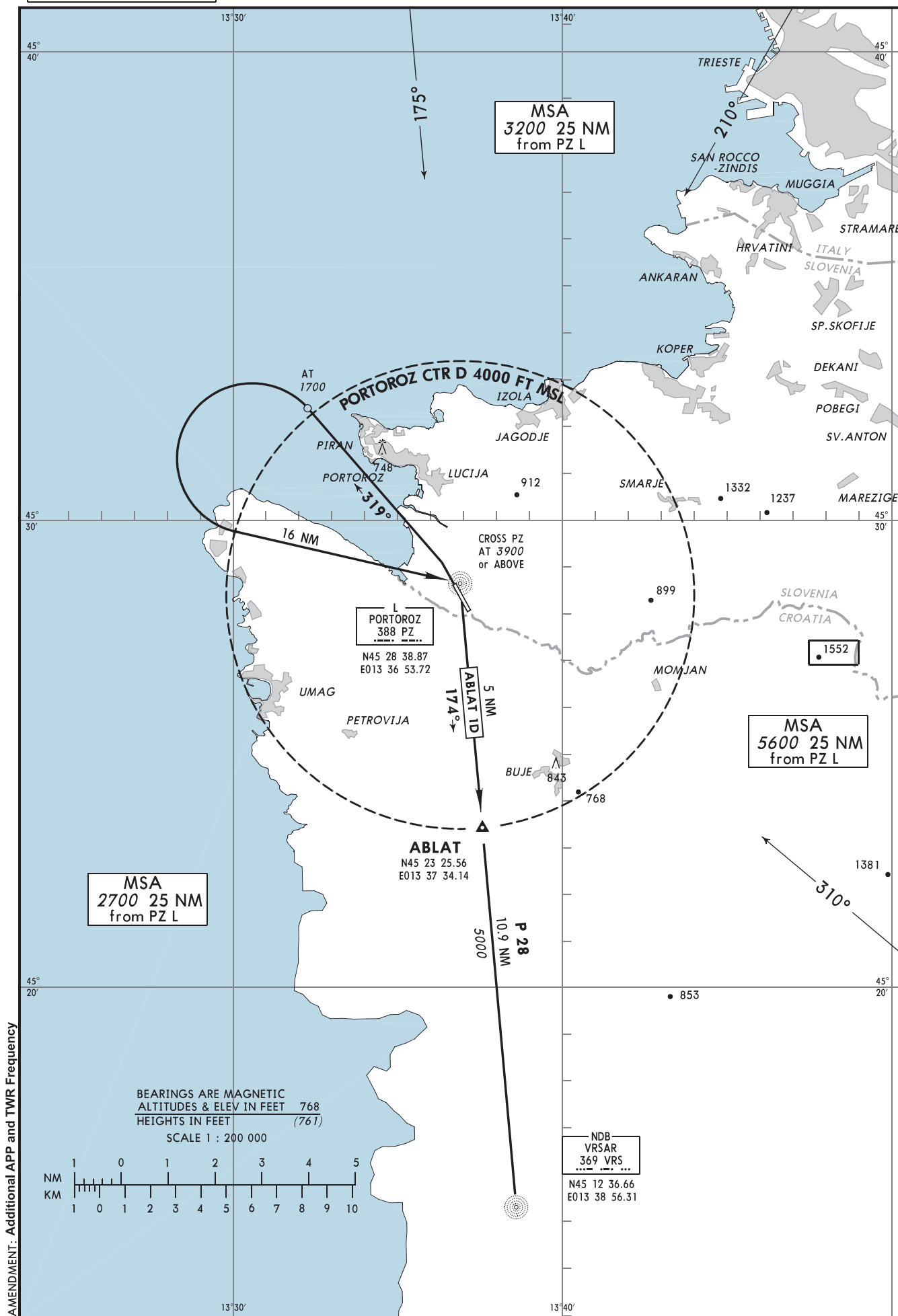
PAGE INTENTIONALLY LEFT BLANK

Designator	Route	AFTER TAKE-OFF		Remarks
		Climb to ALT/FL	Contact	
1	2	3	4	5
<b>ILB 1J</b> (RWY 15)	BISTRICA ONE JULIETT LT, proceed visually to PZ L. Join SID from runway 33.			
<b>ILB 1K</b> (RWY 33)	BISTRICA ONE KILO Climb on track 319° to 1700' ; LT to PZ L; intercept R 256 ILB to ILB VOR/DME (▲). Cross D17 ILB at 4100' or above.			NOTE: This SID require a minimum net climb gradient of 5.5% ( 334'/NM ) up to 1700'.
<b>ROTAR 1J</b> (RWY 15)	ROTAR ONE JULIETT LT, proceed visually to PZ L. Join SID from runway 33.			
<b>ROTAR 1K</b> (RWY 33)	ROTAR ONE KILO Climb on track 319° to 1700' ; LT, onto HDG 179° , RT at R 251 ILB, intercept R 249 ILB to ROTAR (▲).			NOTE: This SID require a minimum net climb gradient of 5.5% ( 334'/NM ) up to 1700'.
<b>VFR Route</b> (RWY 15)	TO RON VOR/DME LT, proceed visually to PZ L. Track 344° visually via VICKY (▲) to RON VOR/DME.			
<b>VFR Route</b> (RWY 33)	TO RON VOR/DME Climb on track 344° visually via VICKY (▲) to RON VOR/DME			

PAGE INTENTIONALLY LEFT BLANK

STANDARD DEPARTURE CHART -  
INSTRUMENT (SID) - ICAOTRANSITION ALTITUDE  
10500'AD ELEV 7 FT  
VAR 1.0°E

APP	124.875
TOWER	129.800
	124.875
	129.800

PORTOROZ, Portoroz  
SLOVENIA  
SID RWY 15/33

PAGE INTENTIONALLY LEFT BLANK

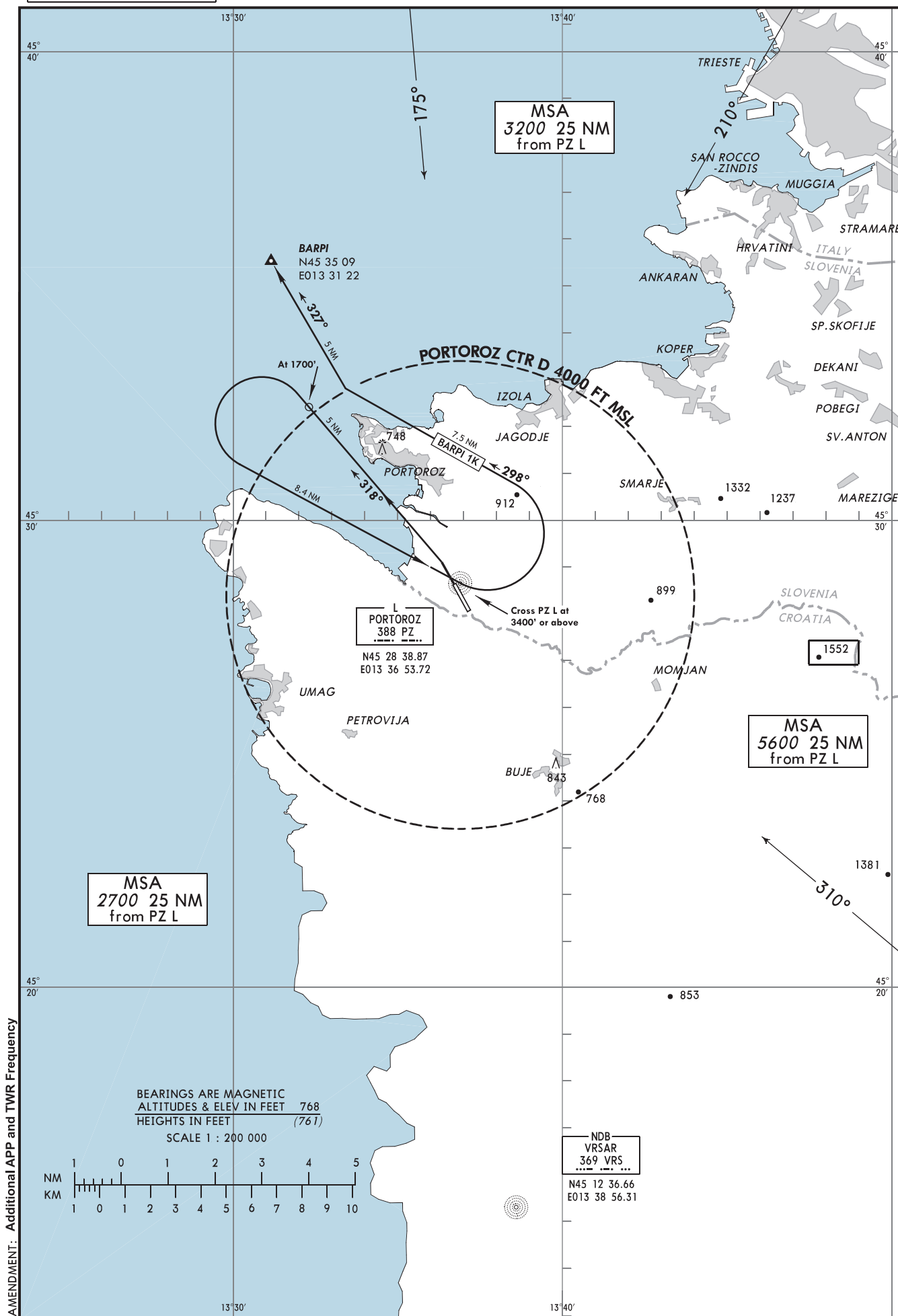




PAGE INTENTIONALLY LEFT BLANK

STANDARD DEPARTURE CHART -  
INSTRUMENT (SID) - ICAOTRANSITION ALTITUDE  
10500'AD ELEV 7 FT  
VAR 1.0°E

APP	124.875
	129.800
TOWER	124.875
	129.800

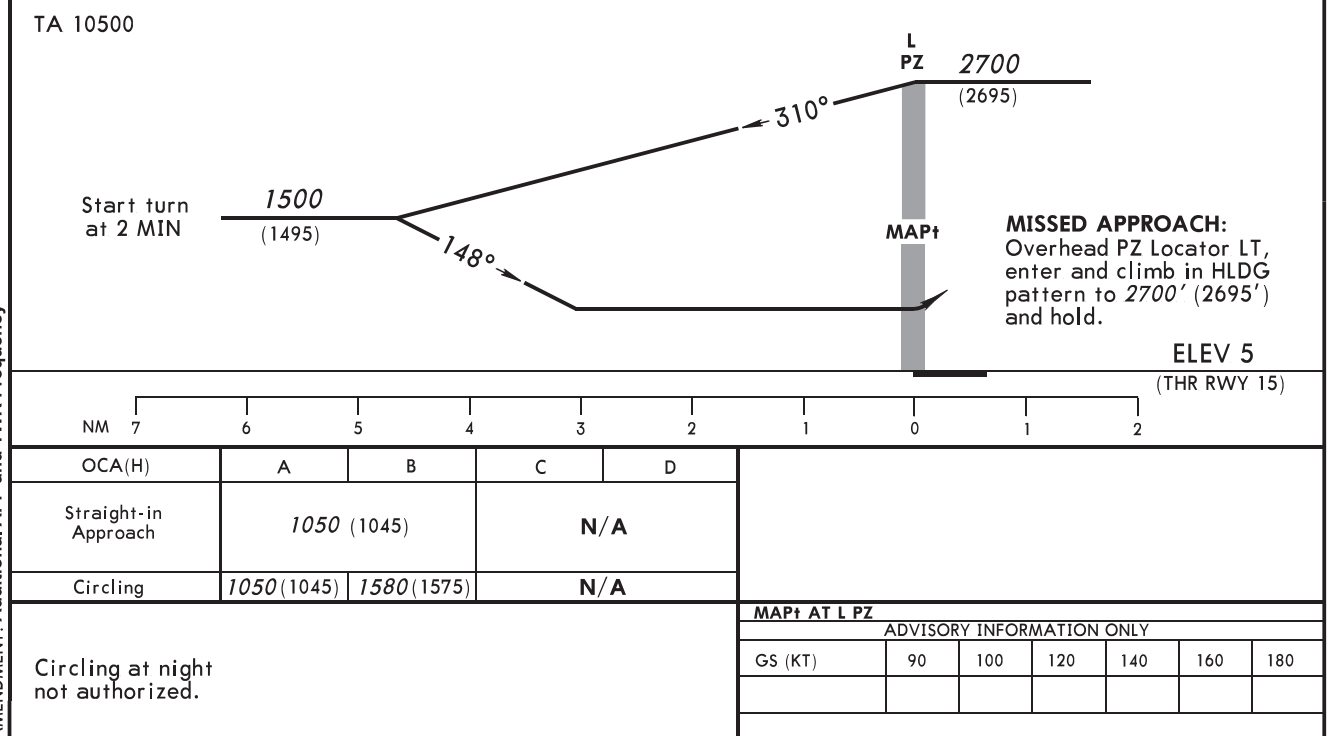
PORTOROZ, Portoroz  
SLOVENIA  
SID RWY 33

PAGE INTENTIONALLY LEFT BLANK

Designator	Route	AFTER TAKE-OFF		Remarks
		Climb to ALT/FL	Contact	
1	2	3	4	5
<b>BARPI 1K</b> (RWY 33)	BARPI ONE KILO Climb on track 318° to 1700', left turn to PZ L; overhead PZ L left turn onto hdg 298°; intercept PZ QDR 327° PZ L to BARPI. Cross PZ L at 3400' or above.			NOTE: This SID requires minimum climb gradient of 5.5% ( 334'/NM ) up to 1700'.  SID BARPI 1K is available for route P28 only.

PAGE INTENTIONALLY LEFT BLANK

**PORTOROZ, Portoroz**  
**SLOVENIA**  
**L RWY 15**



PAGE INTENTIONALLY LEFT BLANK

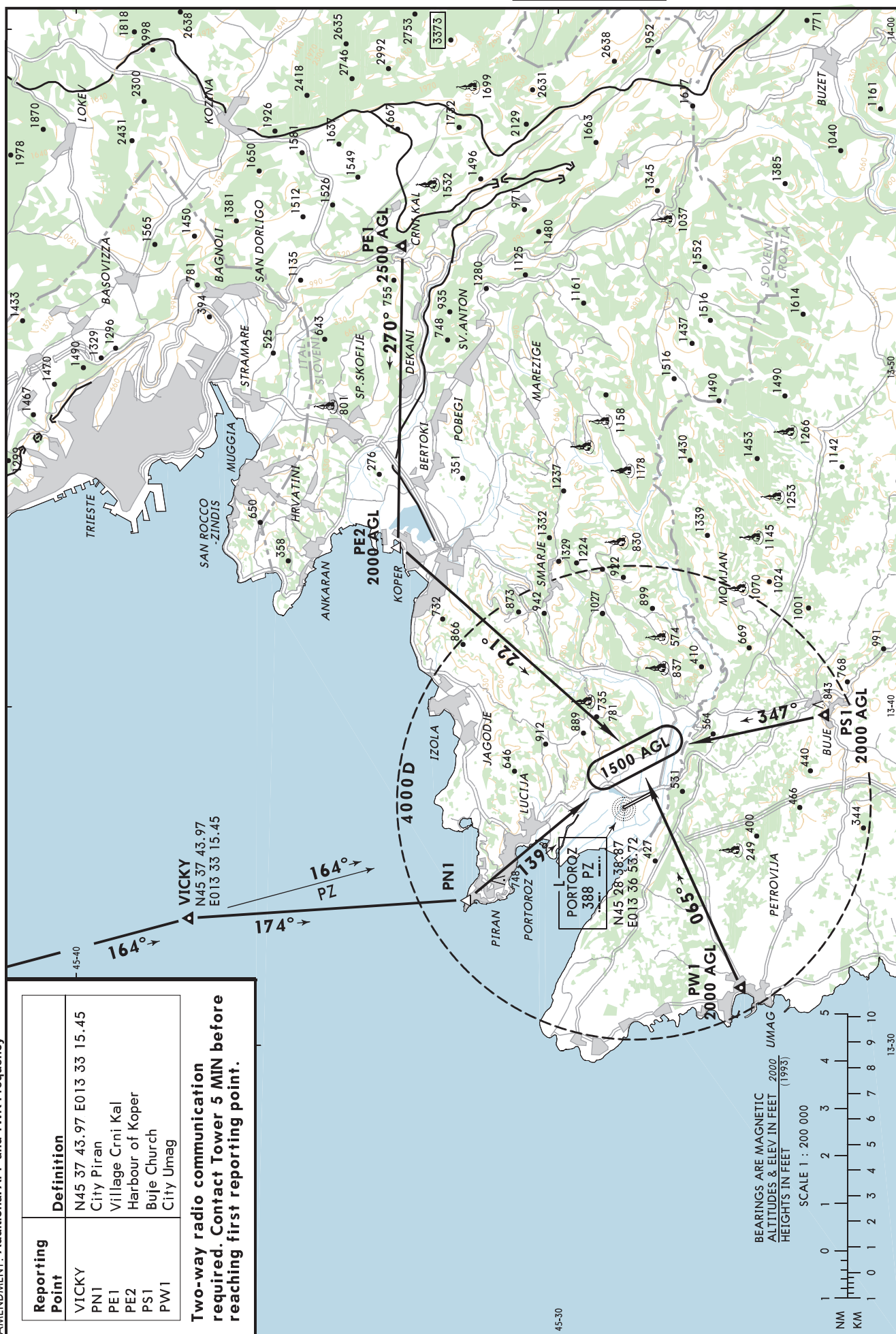


VISUAL  
APPROACH  
CHART

AD ELEV 7 FT

VAR 1.0° E

APP	124.875
	129.800
TOWER	124.875
	129.800

PORTOROZ, Portoroz  
SLOVENIA

AMENDMENT: Additional APP and TWR Frequency

PAGE INTENTIONALLY LEFT BLANK