

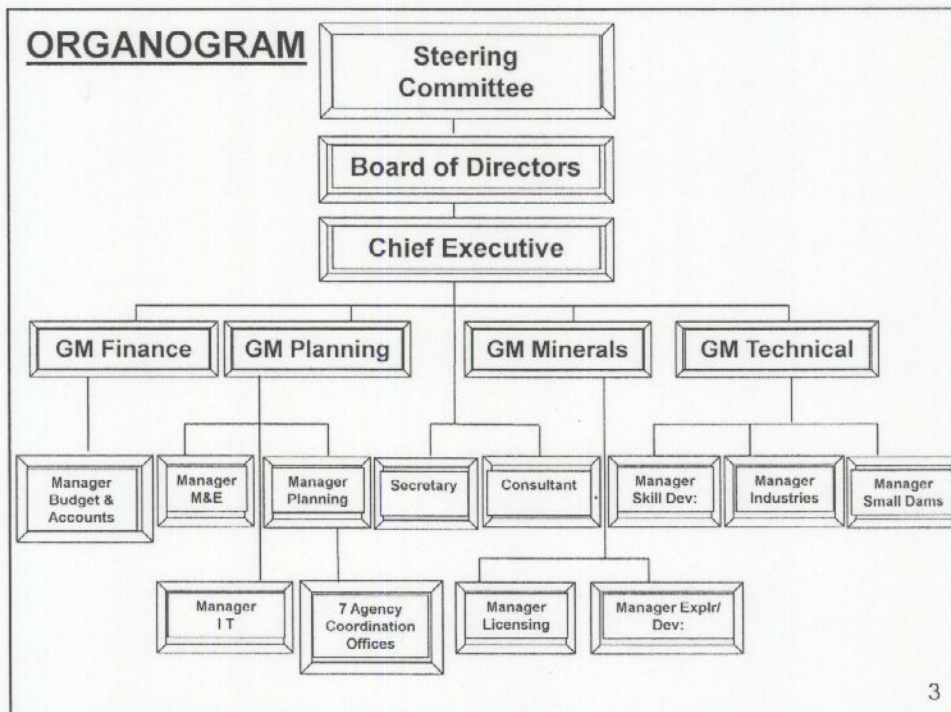


FATA DEVELOPMENT AUTHORITY

Bridging the development divide

FATA DA - CHARACTERISTICS

- ◆ Work on Corporate Lines and lay foundation for Public – Private Partnership.
- ◆ Decentralized Decision Making.
- ◆ Thin & Small – Less Bureaucratic.
- ◆ Focus – Development of Human and Natural Resources in FATA.
- ◆ Pure Developmental Functions – No Operational and Maintenance responsibility.
- ◆ Private Sector/ Civil Society Active Partner in Decision Making.



Decision Making Fora

1. Steering Committee Headed by the Governor

- 3 Members from Private Sector & 6 from government .
- Responsible to set overall policy direction.

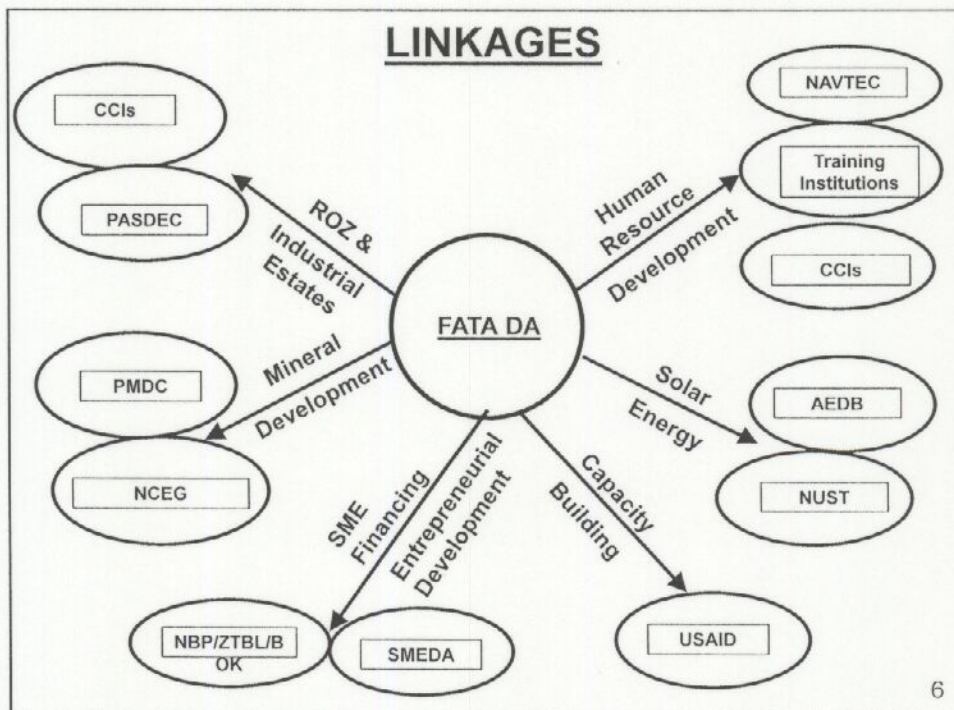
2. Board of Directors chaired by Chief Executive

- 4 members from Private sector & 3 from government.
- The Board exercises all powers.

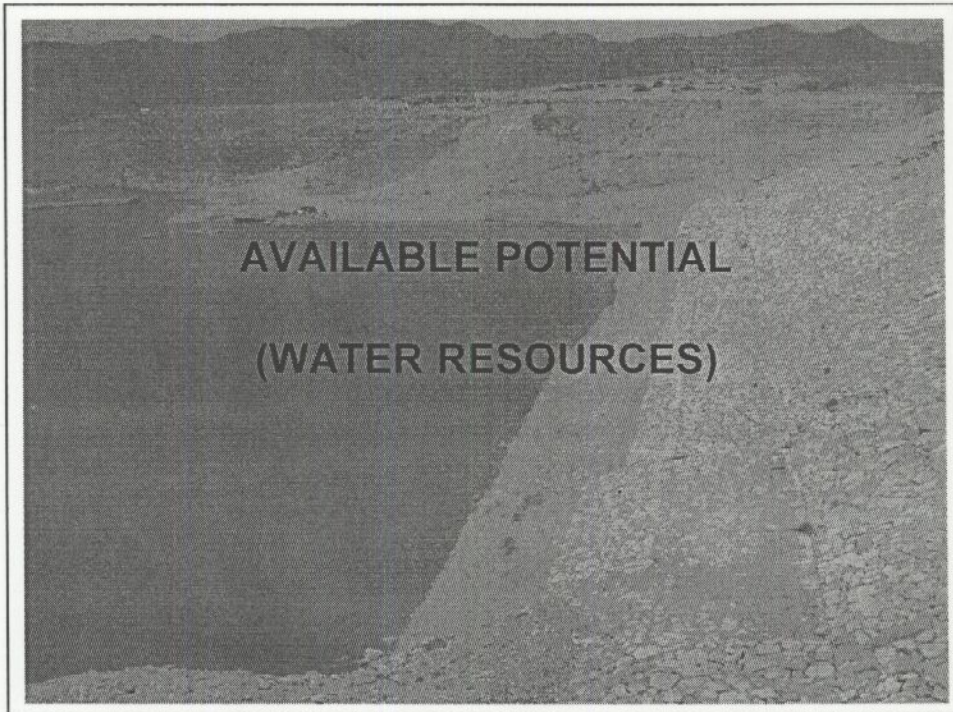
Mandated Functions

- ◆ Assessment of Potential for Economic Development
- ◆ Industrial Development including ROZ
- ◆ Exploration & Development of Minerals
- ◆ Development of Water and Power Resources
- ◆ Skill Development
- ◆ Such other functions as may be assigned by the Governor/Steering Committee
 - i. SME Financing
 - ii. Tourism
 - iii. Townships Development
 - iv. Control of existing technical & vocational institutions
 - v. Regulatory functions of Mineral sector

5



6



(WATER SECTOR - POTENTIAL SITES)

	No of Small Dams	CATEGORIES			
		A	B	C	D
Bajaur Agency	3	1	1	1	-
Mohmand Agency	6	3	1	1	1
Khyber Agency	9	3	2	1	3
FR Peshawar	3	1	1	1	-
FR Kohat	5	1	1	1	2
Orakzai Agency	8	2	2	1	3
Kurram Agency	11	3	3	2	3
NW Agency	33	8	6	4	15
FR Bannu	3	1	2	-	-
FR Lakki	2	1	1	-	-
SW Agency	24	3	3	3	15
FR Tank	6	1	1	1	3
FR D I Khan	7	1	1	1	4
TOTAL	120	29	25	17	49

Source:
NESPAK
report, May
2005

8

Planning

- ◆ Feasibility Studies of Potential Sites.
- ◆ Construction of feasible dams.
- ◆ Rural Electrification through Solar Energy.

9



85% of FATA geologically explored and following minerals identified

Bajaur	Marble, Manganese, Chromite and Emerald
Mohmand	Marble, Chromite, Silica sand, Dolomite, Manganese, Quartz, Feldspar and Emerald
Khyber	Marble, Barite, Graphite, Soapstone and Limestone
Orakzai	Coal and Iron ore
Kurram	Soapstone, Coal, Marble, Magnesite, Iron Ore and Lead
N. Waziristan	Copper, Manganese, Chromite, Magnesite and Granite
S. Waziristan	Copper, Chromite, Marble and Granite
FR Kohat	Coal and Limestone
FR Peshawar	Bentonite and Limestone
FR Tank	Bentonite
FR D I Khan	Gypsum, Marl and Cement grade Limestone

11

Planning

- ◆ Evaluation, Exploration & Development of Mineral Resources.
- ◆ Mechanized Marble Mining, Model Quarries.
- ◆ Establishment of Marble City.
- ◆ Enhancing Production through Infrastructure Facilities.
- ◆ Capacity Building (Mine owners, workers)
- ◆ Mine Safety, Rescue and Labor Welfare Center.

12

HUMAN CAPITAL

- i) Working Age Group (15 – 59) 47%
- ii) Young & Emerging Pop.(upto 15 years) 52%

Source: BOS, P&D GoNWFP 2005

13

Planning

- ◆ Upgrading and improving existing technical & vocational institutes.
- ◆ Skills Development Programs.

14

PERFORMANCE

Marble City in Mohmand Agency

Rs 351.00 M

Highlights:

- ❖ Spreads over an area of 300Acres (1st Phase). Average Plot size one acre.
- ❖ 35 % of the land is earmarked for infrastructure & services.
- ❖ Nearest to vast Marble reserves.
- ❖ Security of title & investment and facilities of lending.
- ❖ Allotment of plots on 100 Acres free of land cost.
- ❖ State of the art infrastructure & Dedicated power supply line with built-in 132KVA Grid Station.
- ❖ Availability of Common Facility & Training/Display Center.
- ❖ Recycling Plant for marble waste.
- ❖ Raw material warehouse facilities to ensure supply chain.
- ❖ Potential for re-designation as Reconstruction Opportunity Zone (ROZ).

15

PERFORMANCE (continued...)

FATA Youth Skill Development

Rs 95.704 M

(Institutional based)

- i. 1st batch of trainees(completed) 228
- ii. 2nd Batch of trainees(in progress) 360
- iii. **Trainees provided employment** 60



16

ECONOMIC AND SOCIAL FEASIBILITY STUDY FOR TOWNSHIPS

- **Scheme Highlights**
 - ✓ Development on commercial lines
 - ✓ Area 300/400 acres
 - ✓ Planning & Design by private sector professional Town planners
 - ✓ Based on international town planning standards
 - ✓ Space for education and health facilities, sports and recreational centers
 - ✓ Independent Municipal Services, water supply and sewerage systems, electric supply system
- **FDA decided to launch pre-feasibility study to:**
 - ❖ Identify most feasible / suitable sites
 - ❖ Determine whether the concept is
 - socially acceptable,
 - economically viable
 - implementable in FATA.
- **Consultants hired to carry out feasibility study and identify four most suitable locations.**
- **Study launched on 8th April 2008.**
- **To be completed in the first week of September 2008 at a cost of Rs. 5.595 million.**
- **Based on the outcome and recommendations of this study, FDA would initiate detailed feasibility design of two projects.**

17

STUDY ON TOURISM POTENTIAL

- 16 week study started to indicate the historical, natural, archeological, geographic tourist spots, the infrastructure available, flora and fauna, the cultural festivals and sports unique to FATA.
- Consulting firm hired, the study initiated on 1st April 2008 and would complete by the 3rd week of July, 2008 at a cost of Rs. 1.67 million.
- FATA Tourism Development Report to include:
 - ✓ A descriptive and referenced historical background of all the historic sites.
 - ✓ Salient features of attractive tourists spots with detailed description of the existing facilities.
 - ✓ Annual calendar of cultural events and festivities.
 - ✓ Methodologies to promote, encourage and facilitate inter-agency exchange visits and tours.
 - ✓ Proposals for development of infrastructure for tourism.
 - ✓ Methodologies to attract national and international tourists.
 - ✓ Ways of disseminating information about the cultural and natural heritage of FATA to the prospective tourists.
 - ✓ Strategies for forging partnerships with commercial operators and private sector for guided tours.
 - ✓ Proposals on how to encourage social interaction amongst tribes and outsiders.

18

SME Financing

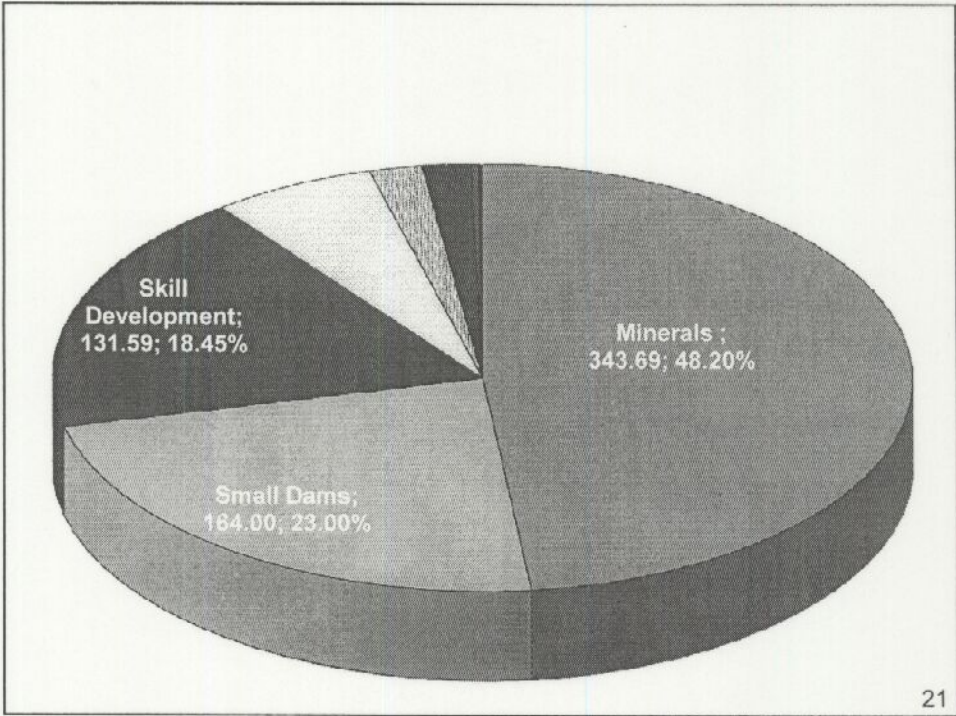
- Due to total absence of SME lending in FATA, FDA in partnership with SMEDA studied & designed following package.
 - FDA will provide credit line/guarantee fund (to absorb all recovery risks) to commercial bank to be engaged as implementation partner.
 - All new and running businesses who can provide two personal guarantees of Maliks & collateral in shape of Alienability Certificate are eligible on 60:40 Debt Equity Ratio .
 - Due to non extension of recovery laws, PA/DM is assigned the pivotal role including ensuring recovery.
- Negotiations to engage commercial bank began in August, 2007 first with NBP, ZTBL and lately BOK. FDA is close to signing partnership agreement with BOK.
- FDA presented the project to Governor for approval to use development fund for lending purpose.
- Governor while approving the project directed to approach the Finance Division. The case has already been taken up.

19

ADP 2007-08

Rs. 713.041 Million

20



MAJOR INTERVENTIONS

MINERALS SECTOR

(Rs. in Million)

Exploration & Development of Copper in N.W.A	172.72
Exploration of coal in Shirani FR DI Khan	92.772
Precious Stones in Mohmand & Bajaur Agencies	32.601
Manganese Prospects in Bajaur and Mohmand Agency	80.147
Mines/ Rescue Centre Orakzai Agency	75.841
Source Rock Mapping & Hydrocarbon potential in FATA.	36.601

23

WATER SECTOR

(Rs. in Million)

Construction of Bara Dam (Detail feasibility studies & design in progress)	5000
Dandy Dam in N.W.A	490.84
Dargai Pal Dam in S.W.A	199.95
Gandaw Dam in Mohmand Agency	197.00
Raghagan Dam in Bajaur Agency	300.00

24

SKILL DEVELOPMENT SECTOR

(Rs. in Million)

Operation of 70 WSDCs in FATA.	182.091
FATA Youth Skill Dev: (Institutional Based)	95.702
FATA Youth Skill Dev: (field internship)	186.937

25

INDUSTRIES SECTOR

(Rs. in Million)

Industrial Estate at FR Kohat	47.20
Reconstruction Opportunity Zone	5000

26

**SKILL DEVELOPMENT
BATCH 1 - 2nd Week of April, 2007**

1.	i. Plumbing	GTVC, Gulbahar,	96	06 months	Completed
	ii. Electrician				
2.	i. Wood Technology	SIDB	62	06 months	Completed
	ii. Leather Goods				
	iii. Auto Mechanic				
	iv. Light Engg				
3.	Cutting, Carving, Polishing of precious and semi precious stones	GGIP	24	12 months	Completed
4.	i. Fabric Production	PKTI	31	06 months	Completed
	ii. Garments Production				
5.	Dress making and Tailoring Techniques	PRGTTI	15	04 months	Completed

228

**SKILL DEVELOPMENT
BATCH 2 - 1st Week of March, 2008**

1. Surveyor	1. Construction Technology Training Institute,	45	06 months
	2. Swedish Group of Technical Institute , Wah Campus		
2. Computer (Hardware) Computer (Hardware & Software)	1. Construction Technology Training Institute,	30	03 months
	2. Swedish Group of Technical Institute , Wah Campus		
3. Basic Plant Operator	Construction Technology Training Institute,	65	06 months
4. Mobile Phones Repairing	Swedish Group of Technical Institute , Wah Campus	50	06 months
5. Marble and Granite mining, cutting, polishing and handicraft manufacturing	Dimension Stone Centre, (A project of PCSIR Peshawar)	40	10 months
6. Industrial Electrician	Govt Advance Technical Training Centre, Hayatabad,	30	06 month

360