

Fundamentals Diagnostic: Ear Training Portion (practice version) ANSWER KEY

Part I: A scale will be played for you (ascending and descending). Identify the scale type, assuming the following options: major, natural minor, harmonic minor, melodic minor; each scale will be played ONE time.



1. harmonic minor

2. Major



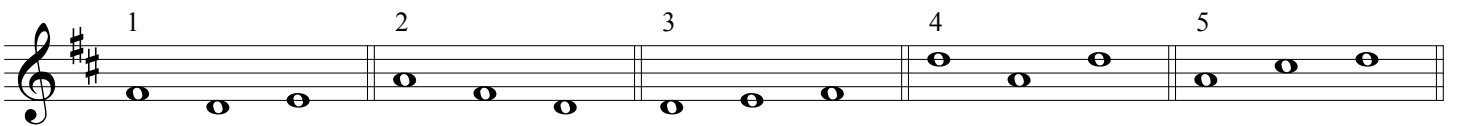
3. natural minor

4. melodic minor

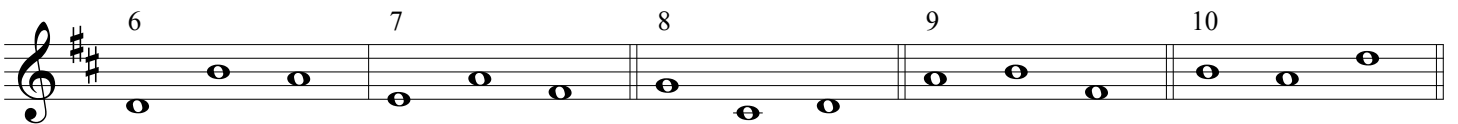
(10 pts.)

Part II: You will hear a series of melodic fragments, all in the key of D major. Each melodic fragment consists of three pitches. For each fragment, notate the three pitches on the staff, using whole notes, as shown in the sample below.

Each fragment will be played TWO times. D major scale will be played at the beginning of the exercise, and then again after the fifth fragment.



(7.5 pts.)



(15 pts.)

Part III: Two brief melodic phrases will be played for you. You should notate the pitches on the staff provided below. The key and the first pitch for each melody is provided for you, and the rhythm is notated above the staff. Please note that both melodies are to be notated in bass clef. Each phrase will be played THREE times.

1. ___M6___ 2. ___M3___ 3. ___P5___ 4. ___m3___ 5. ___m7___

(7.5 pts.)

Part VI: Chords:

A: You will hear a series of five triads in root position; please identify the quality of each. You have three choices: major, minor, or diminished. Chords #1 through 3 will be in close spacing, and chords #4 and 5 will be in open spacing. Each chord will be played ONE time.

1. ___m___ 2. ___d___ 3. ___M___ 4. ___M___ 5. ___m___

B: You will hear a series of seventh chords in root position. Each chord will be either a major-minor seventh chord (Mm7), a minor seventh chord (m7), or a fully diminished seventh chord (^o7). (A major-minor seventh chord is the same as a dominant seventh chord.) You should identify the quality of each chord, using the abbreviated labels shown above--that is, Mm7, m7, or ^o7.

Chords #1 through 3 will be in close spacing, and chords #4 and 5 will be in open spacing. Each chord will be played TWO times.

1. ___m7___ 2. ___Mm7___ 3. ___Mm7___ 4. ___^o7___ 5. ___m7___

(15 pts.)

Part VII: Bass Dictation

You will hear a series of short harmonic progressions, each consisting of five chords. For each progression, you should notate only the bass line, using whole notes. (Do not notate any of the other voices.) All progressions are in the key of A major. An A major scale will be played before the first progression.

Each progression will be played TWO times.

1

2

3

4

(20 pts.)