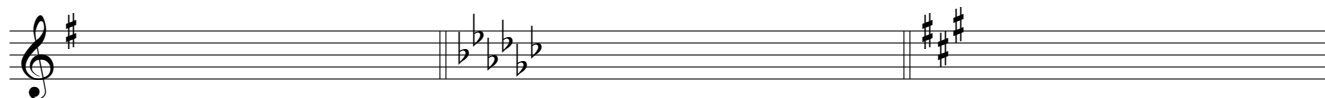


Fundamentals Written Exam
Practice Version
 (Duration: 25 minutes for entire section)

ANSWER KEY

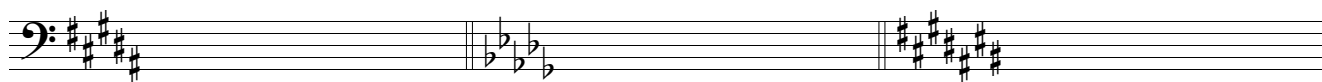
I. Write key signatures for each of the following minor keys. Be sure to pay attention to the clefs.



e minor

G-flat major

f# minor



B major

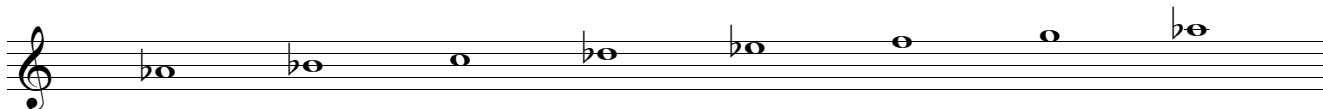
b-flat minor

C# major

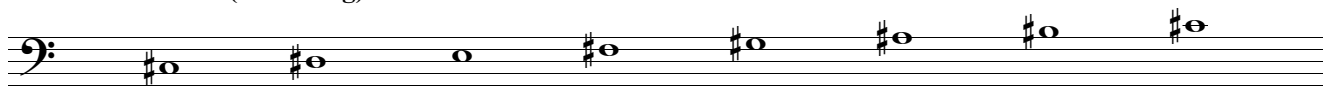
pts. out of 12 _____
 (2 pts. each)

II. Notate the following minor scales. The first two scales should be notated in *ascending* direction. The last two scales should be notated in *descending* direction. For all scales, use accidentals, not key signatures.

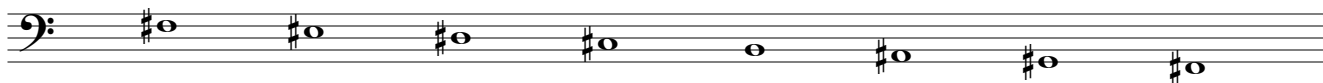
A-flat major (ascending)



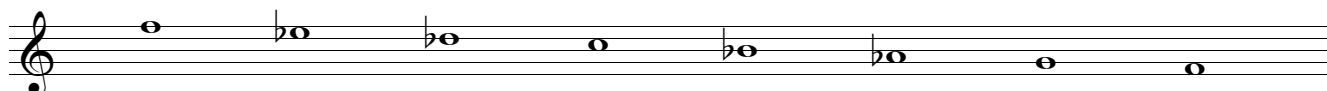
c# melodic minor (ascending)



F# major (descending)



f melodic minor (descending)



pts. out of 12 _____
 (3 pts. each)

III. You are provided with a pitch and a scale degree for that pitch; identify the key that contains the specified scale degree.

B Major

c# natural minor

A^b Major

e melodic minor (asc.)

f# harmonic minor

A Major

g melodic minor (desc.)

a harmonic minor

pts. out of 12 _____
(1.5 pts. each)

IV. INTERVALS: Notate the following intervals above or below the given pitch as indicated.

(P = perfect; M = Major; lower-case m = minor; A = augmented; d = diminished)

M3 below

m6 above

P5 above

d5 below

m3 above

Name the intervals, showing quality and number (for instance, P5)

m3

m7

A4

d7

M6

pts. out of 15 _____
(1.5 pts. each)

V. TRIADS: Write the following triads in root position or inversion, as specified.

C# minor, root position

B Major, second inversion

E \flat Aug, first inversion

F dim, first inversion

d minor, second inversion

A \flat major, first inversion

pts. out of 12 _____
(2 pts. each)

VI. SEVENTH CHORDS: Write root-position seventh chords above the given roots in close spacing.

Major-minor seventh
(dominant)

half-diminished seventh

major seventh

minor seventh

diminished seventh chord

Major-minor seventh chord
(dominant)

pts. out of 9 _____
(1.5 pts. each)

VII. CHORDS IN OPEN SCORE: The following shows triads in open score. For each chord, indicate (1) the pitch that is the root of the chord; (2) the quality of the triad (M, m, d, or A); and (3) whether the chord is in root position, 1st inversion, or 2nd inversion (simply write "root", "1st", or "2nd").

sample

root?	Ab	Gb	Bb	F#	B	C#
quality?	m	M	m	d	M	m
root, 1st, or 2nd?	1st	2nd	1st	1st	root	2nd

pts. out of 15 _____
(1 pt. each)

VIII. ROMAN NUMERALS: Given the key and chord, provide a roman numeral label underneath. Be sure to indicate chord quality, and include an inversion symbol if necessary (⁶ or ⁴)

d: V⁶ A: ii⁶ Bb: vii⁰⁶

c#: V⁶ Eb: vi f#: iv⁶

pts. out of 12 _____
(2 pts. each)