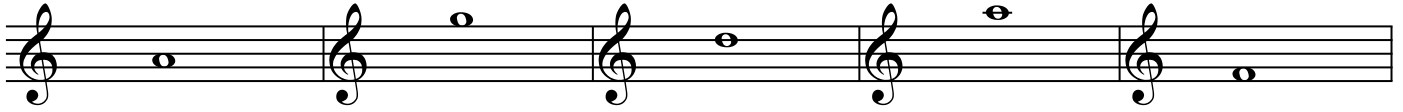
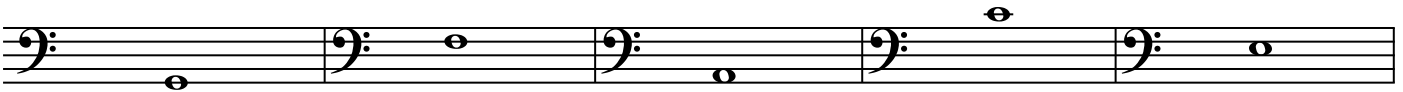


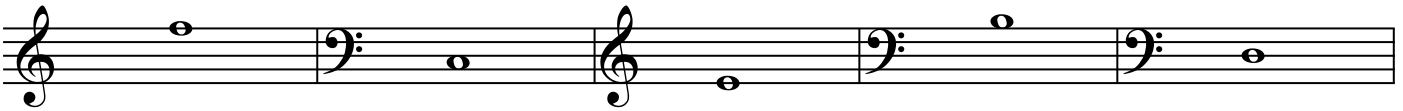
Fundamentals Fluency Exam
Practice Version

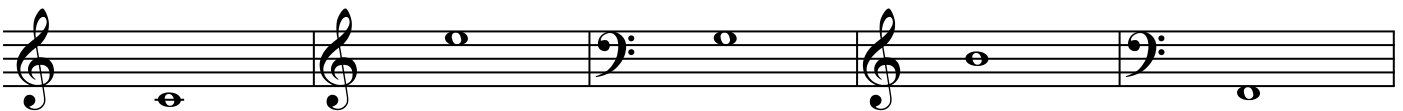
p. 1
timing: 0:40

For each pitch, write the pitch name underneath.









pts. out of 15 _____
(.75 pts. per item)

You are provided with a series of harmonic intervals. For each interval:

1. Identify the size of the interval with an arabic number on the blank underneath (for instance, if it is a 7th, write "7".)
2. If the interval is larger than an octave, reduce it down to its simple equivalent interval. (If the interval is exactly an octave, write "8".)
3. Do not indicate the quality of the interval; simply write the number.
4. Four sample solutions are shown below; take a few seconds to look at them.

sample solutions:

3 7 8 4

— — — — — — — —

— — — — — — — —

pts. out of 16 _____
(1 pt. per item)

Write key signatures for each of the following keys. Note that #1-4 are in treble clef, and #5-8 are in bass clef.



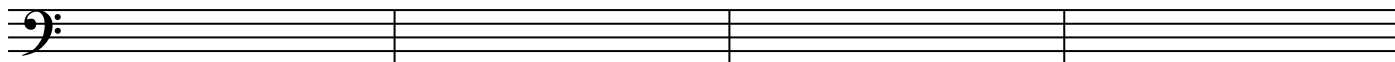
D major

D \flat major

c minor

b minor

5



E \flat major

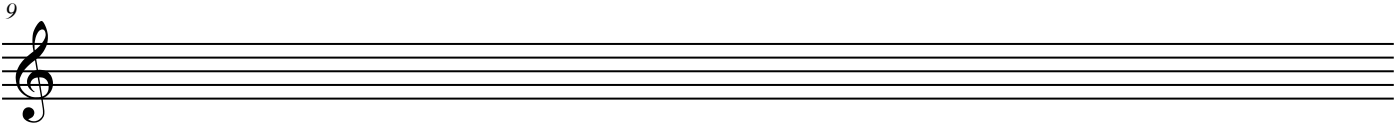
F# major

d minor

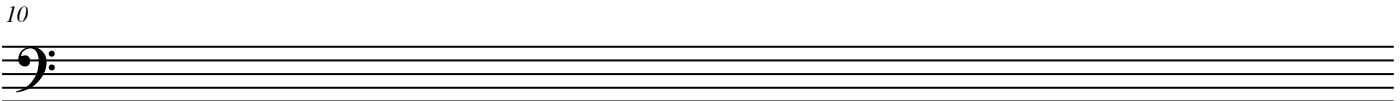
c# minor

pts. out of 16 _____
(2 pts. per item)

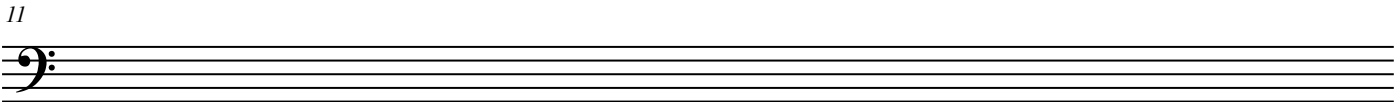
Notate the following scales in ascending direction. For all scales, use accidentals, not key signatures.
Watch out for the clefs.



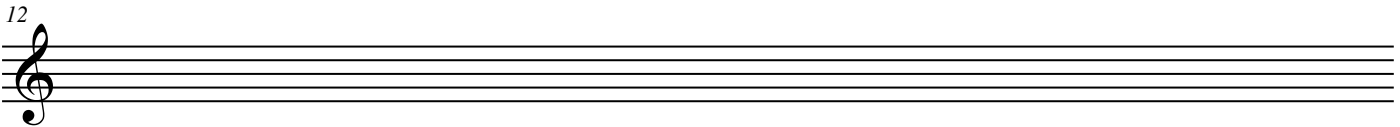
B major



g harmonic minor



G \flat major




f# natural minor

pts. out of 20 _____
(5 pts. per scale)

Given the key and the scale degree, notate the pitch on the staff.

13


^ 5 ^ 3 ^ 7 ^ 6



D \flat major A major e harmonic minor E major

17

^ 5 ^ 2 ^ 6 ^ 7




b minor A \flat major f# melodic minor
(ascending) c natural minor

Write root-position triads above the given roots in close spacing.

M = major; m = minor; A = augmented; d = diminished


21



M m M m d

This exercise consists of a single staff with five measures. The first measure has a treble clef and a whole note G4. The second measure has a treble clef and a whole note F4 with a flat. The third measure has a bass clef and a whole note G3. The fourth measure has a bass clef and a whole note F3 with a flat. The fifth measure has a bass clef and a whole note G2. Below each measure is a letter indicating the triad type: M, m, M, m, and d.

25



m A m d M

This exercise consists of a single staff with five measures. The first measure has a treble clef and a whole note F4 with a flat. The second measure has a treble clef and a whole note G4 with a flat. The third measure has a bass clef and a whole note G3. The fourth measure has a bass clef and a whole note F3 with a flat. The fifth measure has a bass clef and a whole note G2 with a sharp. Below each measure is a letter indicating the triad type: m, A, m, d, and M.

pts. out of 16 _____
(2 pts. per item)