

Fig.14 Queen's Road Central 1897

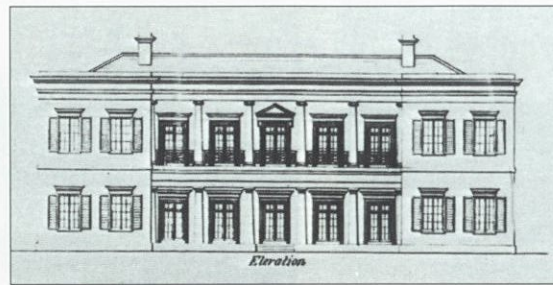


Fig.15 Government House 1854



Fig.16 Flagstaff House 1846



Fig.17 Marine Police Headquarters 1884

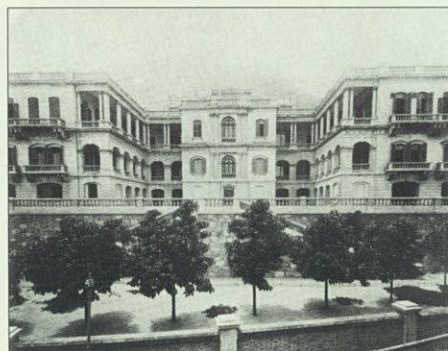


Fig.18 Queen's College 1890

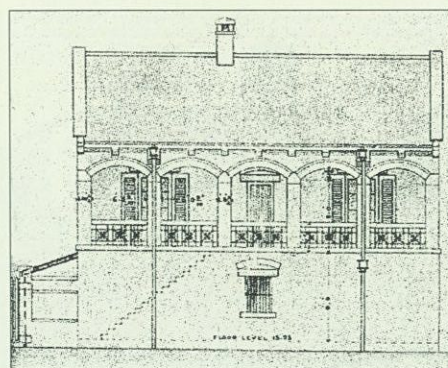


Fig.19 Yau Ma Tai Pump Station 1895

practice 1889 in Hong Kong from Australia. His firm was appeared in the 1893 directory. The signage of the firm appeared in a street photo of Queen's Road Central 1897 (Fig.14). He had a branch office in Macao in mid-1910s. The practice ceased when Lemm died in 1917. Another architect **L.A.Rose** (Louis Augustus Rose, 1871-1927, Authorized Architect 1905-27) also appeared in the same photo. He was born in Hong Kong. He work in P&T as assistant in 1893.

Thomas Tyrwhitt (1874-1956, RIBA 1900, Authorized Architect 1903-04) commenced practice in Hong Kong from 1902 to 1904. He was the pupil and assistant of Sir Aston Webb from 1892 to 1900. He went to South Africa in 1904.

W. St. John H. Hancock (CE, RIBA 1868) arrived in HK as land surveyor in Surveyor-General's Office in 1883 for two years. He resumed practice in London 1886. His firm is found in the 1893 directory with **E.F.X. dos Santos Remedios** (Authorized Architect 1903-04) as staff. Remedios had his own practice before 1899.

Architects in Government 1841-1902

From 1841 to 1901, there were eight Surveyors General and Directors of Public Works. Although they did not have the title of architect or with architectural background, they were significant people in the development of HK in public sector. Their names and projects completed within their term of services are listed as follows:

Alexander Thomas Gordon (Surveyor-General 1843-45) – Seaman's Hospital 1843, War Office engineer **Bruce** and **Robert Adam** designed Flagstaff House 1846 (Fig.15), the oldest surviving western style building in Hong Kong. **Edward Aldrich** RE set to work on the construction of the building.

Charles St. George Cleverly (Surveyor-General 1845-65) – Government House 1854 (Fig.16), Old Stanley Police Station 1859. He also designed St. John's Cathedral 1849 and Zetland Hall 1853.

Wilberforce Wilson (Surveyor-General 1865-68) - cast iron stands for the Jockey Club around 1868

Lewis Henry Moorsom (Surveyor-General 1868-73)

John Macneile Price (Surveyor-General 1873-89, FGS, FRGS) – Hong Kong Observatory 1883, Marine Police Headquarters 1884 (Fig.17)

Samuel Brown (Surveyor-General 1889-1891) – Central College (Queen's College) 1890 (Fig.18)

Francis Alfred Cooper (Director of Public Works 1891-97) - Yau Ma Tai Pump Station 1895 (Fig.19)

Robert Daly Ormsby (Director of Public Works 1897-1901). No 7 Police Satation 1900

Authorized Architects 1903 -1941

Starting from 1903, Hong Kong had a list of Authorized Architect under the Public Health and Building Ordinance. The qualifications of an Authorized Architect were:

- 1) over 27 years of age
 - 2) has worked exclusively as a Civil Engineer or Architect for at least 8 years, dating from the commencement of his pupilage or professional training
 - 3) has had sufficient training and experience as a Civil Engineer or Architect
- With regard to (2), any diploma especially to those issued by the Institute of Civil Engineers or the Royal Institute of British Architects.

There were 33 Authorized Architects in 1903. Out of the 33 Authorized Architects, 11 of them were with architectural background, 14 were engineers and the background of the rest was unknown. By 1941, there were 74 Authorized Architects. 28 were with architectural background and 17 were engineers. The background of the rest is unknown. There were 24 Chinese in the Authorized Architects list in 1941.

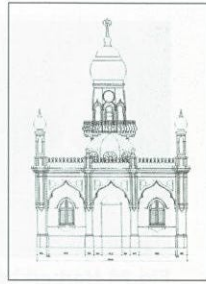


Fig.20 Jamia Mosque 1915

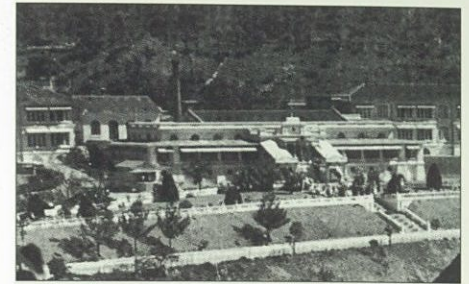


Fig.21 Repulse Bay Hotel 1920

Authorized Architects in Private Practice 1903-1941

There are 12 firms found in the 1914 directory. They were: A. Abdoolrahim; Denison, Ram & Gibbs; Harker & Rosser; E.M.Hazeland; Leigh & Orange; John Lemm; Colbourne Little; Palmer & Turner; L.A. Rose; G.J.B.Sayer; C.E.Warren and Weaser & Raven.

Abdoolhoosen Abdoolrahim (RIBA, Authorized Architect 1905-27) worked in Hancock's firm in 1893 and in Danby's firm in late 1890. The firm should be in practice before 1914 till 1927. The project done by Abdoolrahim was Jamia Mosque 1915 (Fig.20)

Denison & Ram was founded by **Albert Denison** (MICE, Authorized Architect 1903-27) and **Edward Albert Ram** (-1946, FRIBA 1897, Authorized Architect 1903-27) in 1897. Denison was an assistant in Danby & Leigh 1884. He had his own practice in 1889. His firm was appeared in the 1893 directory. Ram commenced practice in 1885 in Westminster and then came to Hong Kong. He worked in Sharp & Co. in 1893. Later on, **Lawrence Gibbs** (MICE, Authorized Architect 1903-27) joined the firm to form **Denison, Ram & Gibbs** before 1902. Denison left the firm in 1925. His position was replaced by **Edmund Frederick Ronald Sample** (1888-1951, RIBA, Authorized Architect 1922-33). Ram left in 1927 and practiced in Kensington until his retirement. The name of the firm remains unchanged until the business ceased in 1933. The works done by the firm were Matilda Hospital 1906, Old Halls HKU 1913-15, Helena May 1916 and Repulse Bay Hotel 1920 (Fig.21).

Harker & Rosser was formed by **Bernard Brotherton Harker** (MICE, Authorized Architect 1903-13) and **Frederick Endell Rosser** (-1920, MSA, RIBA, Authorized Architect 1914-20). Harker practiced in Hong Kong before 1899.

Ernest Manning Hazeland (1870-1944, Authorized Architect 1903-41) (Fig.22) worked in PWD from 1888 to 1900 and then had his own practice before 1914 until 1923. He partnered with **Ugo Gonella** (Authorized Architect 1918-40), an Italian architect, to form **Hazeland & Gonella** from 1924 to 1941. He died in 1944 in Stanley Internment Camp during Japanese Occupation of Hong Kong. Their projects were St. Margaret's Church 1925 (Fig.23) and St. Anthony Church 1934.

Leigh & Orange was succeeded by **Arthur Henry Ough** (1863-1947, RIBA 1892, Authorized Architect 1903-12, L&O partner). He joined Danby & Leigh as managing assistant in 1888 and commenced independent practice 1891 in London. Ough returned to Hong Kong 1901 in partnership with L & O. **George Morrison Hay** (1875-, RIBA) was one of the staff joined L&O in 1906. In 1914, the key members of the firm were: **Alfred Bryer** (Authorized Architect 1903-15, L&O partner), **Albert Edwin Griffin** (MICE, Authorized Architect 1904-27, L&O partner), **William Laughton Leask** (Authorized Architect 1912-27), **Gerald George Wood** (MICE, Authorized Architect 1915->41), **F. Griesselln** (RIBA), **A. Lambden. Alexander Somerled MacKichan** (MICE, Authorized Architect 1913->41, L&O partner), **G. Pasker** (RIBA) and **John Edward Potter** (RIBA, Authorized Architect 1915-41).

Projects completed within this period were Prince Building 1904, St. Andrews Church 1904, Former Pathological Institute 1906, Main Building, HKU 1912 (Fig.24), French Mission Building 1917, Gloucester Building 1932 and Northcote Science Building 1941.

Alexander Colbourne Little (1877-1936, FRIBA 1907, Authorized Architect 1910-36) came to HK and worked in PWD in 1907. He commenced private practice before 1914. **Joseph Robinson Maughan** (RIBA, Authorized Architect 1913-15) was the key member of the firm. In around 1916, he partnered with **Francis Robert John Adams** (C.E., Authorized Architect 1912-27) and **Ernest Marshall Wood** (1884-, RIBA, Authorized Architect 1913-27) to form **Little, Adams & Wood**.

Carlos Henrique S.F. Basto (C.H. Basto, Authorized Architect 1918-41), **Thomas Brameld** (1882-, RIBA, Authorized Architect 1923-36), **William Charles Felshow** (Authorized Architect 1930-38) and **Antonio Hermenegildo Basto** (A.H. Basto 1894-1979, RIBA, Authorized Architect 1922->41, HKIA 1956) were staff of the firm in 1922. C.H. Basto was the partner in 1938. The firm ceased practice after 1941.

The projects completed were Kam Tong Hall 1914 (Fig.25), Old Tsan Yuk Hospital 1922, La Salle College 1932 and Nethersole Hospital 1937.

Palmer & Turner was succeeded by **Herbert William Bird** (RIBA 1897, Authorized Architect

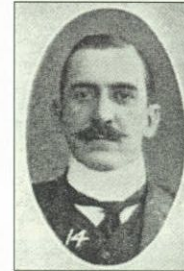


Fig.22 Ernest Manning Hazeland

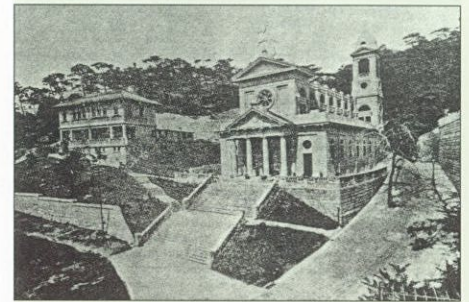


Fig.23 Margaret's Church 1925



Fig.24 HKU 1912



Fig.25 Kam Tong Hall 1914

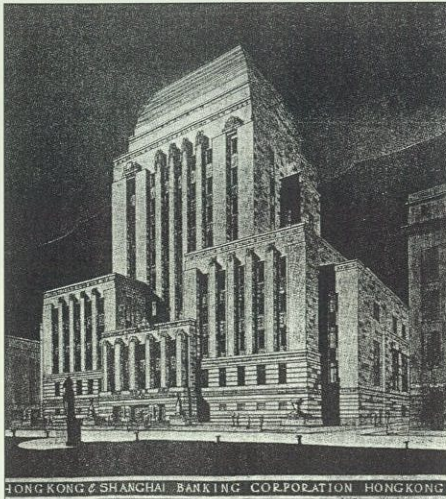


Fig.28 HKSBC Head Office 1935



Fig.29 King Yin Lei(Ultama)

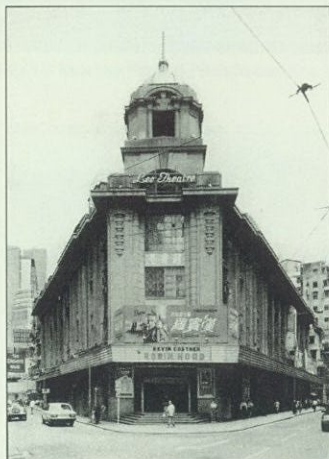


Fig.30 Lee Theatre 1925



Fig.31 Peninsula Hotel 1928



Fig.26 Herbert William Bird



Fig.27 Lannox Godfrey Bird

1903-27, P&T partner 1901-1928) (Fig.26) and his brother **Lennox Godfrey Bird** (DSO, Authorized Architect 1906-35, P&T partner 1907-1935) (Fig.27). They were nephews of S.G. Bird. H.W. Bird was assistant of P&T in 1893. **George Leopold Wilson** (1881-1967, FRIBA 1926, Authorized Architect 1910->41, P&T partner 1911-50) and **Malcolm Hunter Logan** (MC, Authorized Architect 1910-36, P&T partner 1911-33) joined in 1907. Logan left P&T in 1933 and formed **Logan & Amps** with **Leon Williamson Amps** (MICE, Authorized Architect 1933-41) from 1934 to 37. **Alfred Richard Gerrard** (Authorized Architect 1937-38) was one of their staff in Logan & Amps. **John Archibald Ritchie** (Authorized Architect 1935-41, P&T partner 1935->41) joined P&T in 1929. **Donald MacAlister** (Authorized Architect 1938-41), **Frank Grose** (RIBA, Authorized Architect 1935->41, HKIA 1956) and **Godfrey Vernon Bird** (1907-79, RIBA, Authorized Architect 1936-41, P&T partner 1935->41) joined in 1931. Other staff with Authorized Architect qualification were **Arthur G Wright Ogilvie** (Authorized Architect 1921-29), **Charles Peake Anderson** (Authorized Architect 1922-29), **Gerald Davidson** (RIBA, Authorized Architect 1922-31) and **Victor Thomas Low** (Authorized Architect 1936-41).

The projects done by P&T within this period were Victoria Hospital 1903, Alexander House 1904, Rosary Church 1905, Netherlands India Commercial Bank 1906, Victoria Theatre 1911, Rutton House 1923, Shek-O Clubhouse 1924, Hop Yat Church 1926, The Falls (House for Hotung) 1928, St. Stephen's College 1929, SCMP Building 1932, Pedder Building 1932, Ko Shing Theatre 1932, Bank of Canton Building 1932, War Memorial Hospital 1932, Kau Yan Church 1932, HKSBC Head Office 1935(Fig.28), Maryknoll School & Convent 1936, Hillcrest Apartments 1937, Eu Gardens 1938, Marina House 1939 and Holland House 1939.

There is no information on **George John Budds Sayer** (Authorized Architect 1905-15).

Charles E. Warren (C.E., Authorized Architect 1903-23) came to Hong Kong before 1899. He worked in PWD and then in his own practice until 1928.

Weaser & Raven was founded by **Arthur Robert Fenton Raven** (MRSanI, Authorized Architect 1905->41, HKIA 1956) and **William Lionel Wreford Weaser** (Authorized Architect 1905-24) before 1909. Weaser had his own practice and Raven in partnership with **Oscar Boulton Raven** (Authorized Architect 1919-37) to form **Raven & Raven** around 1921. Later on Raven partnered with A.H. Basto to form **Raven & Basto** from 1922-37. Raven and Basto separated and had their own practice in 1938 until 1941. Both firms resumed practice after WWII. The project completed by Raven were Chinese YMCA 1918, designed by Harry Hussey from Chicago; Chinese Methodist Church 1932, designed by **Arthur John May** (-1973, RIBA, Authorized Architect(conditional) 1924-31) from London and King Yin Lei (Ultama) 景賢里 1937(Fig.29).

In 1920s, new firms are found in the directories:

John Caer Clark (Authorized Architect 1912-41) practiced before 1921 to 1923. He had partnership with **Iu Tak Chung** 姚得中(Authorized Architect 1923-33) to form **Clark & Iu** from 1924 to 1937. Tung Wah Group of Hospitals was one of their clients. Clark had his own practice again from 1938 to 1941.

Arthur George Hewlitt (RIBA1911, Authorized Architect 1912-36) arrived in HK 1909, practiced before 1921 to 23. He partnered with **Siu Ho Ming** 蕭浩明(Authorized Architect 1924-41) to form **Hewlitt & Siu** from 1925 to 1935.

Arthur Poonoo Samy (Authorized Architect 1905-36) practiced before 1921 to 1938. He worked in John Lemm's firm in 1893.

Brossard, Mopin & Co. practiced before 1921 to 1927. Both Brossard and Mopin were French engineers specialized in reinforced concrete works. They had involved in the construction of St. Margaret's Church 1925.

John Sousa Moraes (BSc(Eng), Authorized Architect 1920-29;33->41) practiced before 1922 to 1941.

Alfred James Lane (Authorized Architect 1923-41) practiced from 1925 to 1941

William Thom (Authorized Architect 1919-38) practiced from 1925 to 1930.

Michael Anthony Xavier (Authorized Architect 1923->41) practiced from 1925 to 1941. He designed Lee Theatre 1925 (Fig.30).



Fig.32 George
Albert Victor Hall



Fig.33 St. Teresa's Church

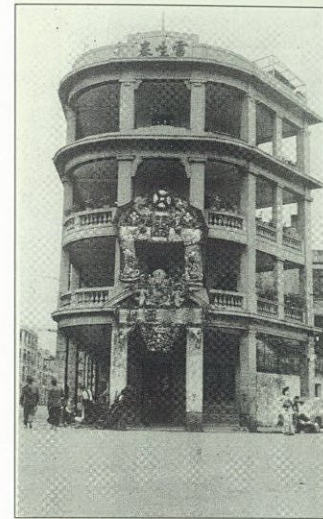


Fig.34 Lui Seng Chun 1934

Hong Kong Engineering & Construction Co. practiced from 1925 to 1941.
Armstrong, Whitworth & Co. and **A.W.Graham-Brown** practiced from 1925 to 1927.
Hong Kong Realty & Trust Co. practiced from 1925 to 1933. **William Douglas Bamford Goodfellow** (Authorized Architect 1923-25) of the firm, designed the Peninsula Hotel 1928 (Fig.31).

George Willis Grey (1880- , RIBA, Authorized Architect 1924-29;32->41) practiced from 1927 to 1928.

Frederick James Easterbrook (Authorized Architect 1922-36) practiced from 1927 to 1928.
Hall & Hall were founded by **George Albert Victor Hall** (1897-1956, RIBA, Authorized Architect 1927-41) (Fig.32) and **William Hall** (Authorized Architect 1920-33) from 1928 to 1933. They were sons of a famous Eurasian, Sin Tak Fan. After the death of William, George partnered with **Harry Way** (Authorized Architect 1924->41, HKIA 1956) to form **Way & Hall** from 1934 to 1956.

In 1930s up to 1941, more new firms were appeared:

James Smith Gibson (Authorized Architect 1928-41) from 1930 to 1938

Arthur George Pile (Authorized Architect 1923-36) from 1930 to 1936.

Farrell & Co. by **P.T. Farrell** from 1930 to 1941.

Brandt & Co. from before 1933 to 1936.

General Construction Co. from 1934 to 1938.

Goddard & Douglas from before 1935 to 1941.

Far East Architectural Engineering Corporation from 1939 to 1940.

Credit Foncier & d'Extreme Orient : a firm based in Shanghai, with mortgages, real estate, architects & insurance services. It appeared before 1931 to 1941 in HK. **Gabriel Van Wylick** (Authorized Architect 1927->41) was the manager. He was a Belgian. The firm had many developments along Prince Edward Road. St. Joseph's Home for the Aged 1930s and St. Teresa's Church 1932(Fig.33) were two of their projects. The design sketch of St. Teresa's Church was prepared by **Rev. Fr. Gresnit**, a Benedictine, then Professor of Architecture of the Catholic University of Peking. Van Wylick prepared the plans from the sketch. It is suspected that Van Wylick also designed Eucliff 1930s, at Repulse Bay.

Walter Hargreaves Bourne, (W.H.Bourne, 1874- , RIBA, Authorized Architect 1925-38) He designed Lui Seng Chun 雷生春 1934 (Fig.34).

William Arthur Cornell (1888- , RIBA, Authorized Architect 1923-36) worked in P&T around 1914 to 1922 and started his own practice from 1935 to 1941. He was the project architect of Northcote Training College 1941(Fig.35).

Davis, Brook & Gran: The firm appeared from 1935 to 1941. **John Tallents Wynyard Brooke** (Authorized Architect 1933-41) **E.M.Gran** and **Henry Jenson Tebbutt** (1893- , RIBA, Authorized Architect 1930->41) were partners. They had branch office in Shanghai. CLP Admin. Building 1941 (Fig.36) was one of their projects.

Sven Erick Faber (1892- , Authorized Architect 1936->41), consulting civil engineer in Shanghai from 1928 -36. Practicing in HK from 1936-73. He designed the first Queen's Theatre in 1921.

Alfred Victor Jorge Alvares (1910- , Authorized Architect 1938->41, HKIA 1956)(Fig.37) and

Louis Biau (Authorized Architect 1937->41) and found around late 1930s to 1941.

There are also names of Authorized Architect who are not in the directory. The list is arranged in ascending order of years for easy reference of architects around the same period.

Guy Blood (Authorized Architect 1903-08) Engineer

James Fettes Boulton (Authorized Architect 1903-11)

Alfred Herbert Hewitt (Authorized Architect 1903-16)

Wilberforce Page Lambert (1874- , RIBA 1911, Authorized Architect 1903-06), he had worked for Danby for 4 years.

John Ernest Lee (Authorized Architect 1903-06)

Christopher Boswood Thomas (-1915, RIBA 1901, Authorized Architect 1903-14)

Alfred Wright (1880- RIBA, Authorized Architect 1903-06)

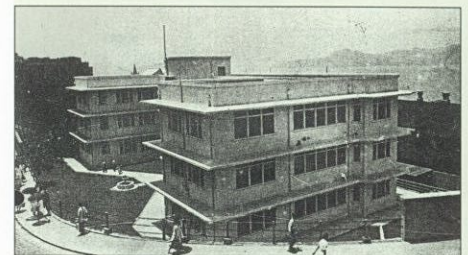


Fig.35 Northcote Training College 1941



Fig.36 CLP Admin. Building 1941



Fig.37 Alfred Victor Jorge Alvares



Fig.38 Alexander Vasilievich Skvorzov



Fig.39 William Chatham

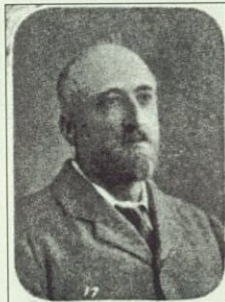


Fig.40 Hugh Pollock Tooker



Fig.41 Alexander Vasilievich Skvorzov

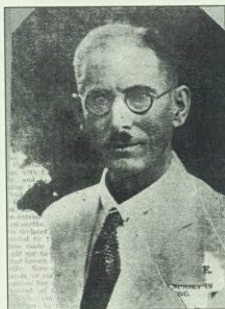


Fig.42 Henry Thomas Jackman

- Donald Macdonald** (1897- , RIBA, Authorized Architect 1904-13)
Sidney J Powell (Authorized Architect 1904-07)
Charles Hamilton Rew (Authorized Architect 1904-07)
James Callaway Lowe (Authorized Architect 1905-08)
John McCubbin (Authorized Architect 1905-23)
Anthony Roy Austin (Authorized Architect 1906-22)
Thomas William Clarke (1883-1940, RIBA, Authorized Architect 1906-07)
Edward Sergint Lindsey (Authorized Architect 1910-11)
Wray Wilkins Wheston (1876-, RIBA 1910, Authorized Architect 1910-11)
Robert Baker (Authorized Architect 1911-33)
John Ashby Offor (Authorized Architect 1911-15)
Dabney Minor Mickle (Authorized Architect 1912-20)
Joseph Robinson Maughan (Authorized Architect 1913-15)
Daniel Jaffe (Authorized Architect 1914-19)
Archer Dave Keigwin (Authorized Architect 1916-27)
Somers Howe Ellis (Authorized Architect 1917-33)
John Archibald Shaw (Authorized Architect 1917-40)
Cyril R. Muston Young (Authorized Architect 1917-40)
Clarence A Coburn (Authorized Architect 1918-22)
Rene Gaujoin (Authorized Architect 1918-24)
William Arthur Butterfield (Authorized Architect 1919-38)
William Ewart Douglas (Authorized Architect 1920-28)
John Duncan (Authorized Architect 1920-27)
Louis Gain (Authorized Architect 1920-27)
Ernest Wilfred Blackmore (Authorized Architect 1922->41)
Henry Charles Durrschmidt (Authorized Architect 1922-41)
Ambrose Noel Lucey (Authorized Architect 1922-28)
Laurence Dunmore Martyn (1890- , RIBA, Authorized Architect 1922-27)
Edward Dean Shank (Authorized Architect 1922-41)
Robert Albert Walter (RIBA, Authorized Architect 1922)
Josiah Logan Adams (Authorized Architect 1923-41)
Robert Wallace Bateman (Authorized Architect 1923-27)
Richard Scott Carrick (Authorized Architect 1923-24)
Ivor McInnes (Authorized Architect 1923-35)
William Owen Pearce (Authorized Architect 1923-24)
Oliver Frederick Savege (Authorized Architect 1923-25)
Alexander W. Graham Brown (Authorized Architect 1924-28)
Sydney Charles Clayton (Authorized Architect 1924)
Frank Clemes (Authorized Architect 1924-28)
Robert Edward Hemmings (Authorized Architect 1924-25)
Andrew Soutsa Mill (Authorized Architect 1924-27)
Mackay H Baillie Scott (1865-1945, RIBA, Authorized Architect 1924-25) He had published a book "Houses and gardens: Arts and Crafts interiors" in 1906.
Frederic Newall Young (RIBA, Authorized Architect 1924-28)
Philip Weston Greene (Authorized Architect 1925-29)
Henry Pooley (Authorized Architect 1925-27;29-33)
Sydney John Squire (1879-1976, RIBA, Authorized Architect 1925)
F.W. Foster-Turner (Authorized Architect 1926-29)
Jean Victor Guerineau (Authorized Architect 1926-40)
Robert William Stoddart (1890-1953, RIBA, Authorized Architect 1926-31)
F. Munford (Authorized Architect 1927-31)
A. Mylo (Authorized Architect 1927-37)
Garnet Rankin (Authorized Architect 1927-31)

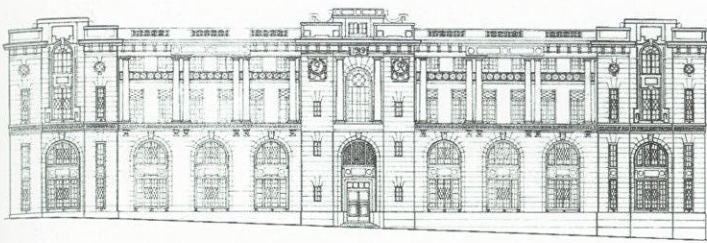


Fig.43 Central Police Station 1919

- Valentine John Atkins** (Authorized Architect 1928-34)
Charles Simpson Atwell (Authorized Architect 1929-33)
Lucien E Camille David (Authorized Architect 1929-34)
James Bentley Hawker (Authorized Architect 1929)
Sidney Dixon Igglesden (Authorized Architect 1929-34)
L. Blare (Authorized Architect 1931-33;39-40)
Hugh F Charles Colman (Authorized Architect 1932-40)
Viaian Arthur Garton (Authorized Architect 1932-41)
John Tallents Wynyard Brooke (1879-1958, RIBA, Authorized Architect 1933-41)
Earnest H Hamilton Higham (RIBA, Authorized Architect 1933-35)
Ronald Bannatyne Lewis (Authorized Architect 1933-38)
Tom Sparshott (Authorized Architect 1933-34)
Edward Charles Stocker (Authorized Architect 1933-34;37-41)
Charles Leonard Tatham (Authorized Architect 1933-34)
Hugh Braga (Authorized Architect 1934->41)
Jean Julien Missu (Authorized Architect 1934-40)
Reginald David Walker (Authorized Architect 1934-41)
Nicolas Savelievich Volkoff (Authorized Architect 1935-41)
Hipolit Grzymala Siedlecki (Authorized Architect 1936)
George McKechnie Park (Authorized Architect 1937-41)
Richard Charles Lee (Authorized Architect 1939-41)

The second last Authorized Architect in the list 1941 is **Alexander Vasilievich Skvorzov** (1893-1971, Authorized Architect 1941->41)(Fig.38). He came to HK in 1938 and worked for the Hong Kong Engineering and Construction Co. He engaged in 18 days of combat in the defense of HK and was in the concentration camp until the war ended. He had a sketchbook showing the camp life, was published in 2005.

Architects In Government 1903-1941

The Directors of PWD and the major works completed in their term of service were:

- William Chatham** (MICE, Director 1901-21, Authorized Architect 1903-20)(Fig.39) – Western Market 1906, Marine Department Building 1906, Signal Tower 1907, Ma Tau Kok Butchery 1907, Wan Chai Post Office 1912-13, Supreme Court 1912, Central Magistracy 1914, Central Police Station 1919 and Tsim Sha Tsui Fire Station 1920.
Thomas Luff Perkins (Director 1921-23, MICE, RIBA, Authorized Architect 1904-23) – Yau Ma Tai Police Station 1922, Cenotaph 1923 and Western Fire Station 1923.
Harold Thomas Creasy (Director 1923-32, Authorized Architect 1924-31) – Sham Shui Po Police Station 1924 and Central Fire Station 1926.
Richard McNeil Henderson (Director 1933-41, Authorized Architect 1920-39) – South Kowloon Magistracy 1933, Wan Chai Market 1937 and Central Market 1938.

Under the Civil Servant List and the directories, engineers with Authorized Architect qualification or persons with Architect title are listed out in ascending order of the years of qualification as follows:

- Hugh Pollock Tooker** (Engineer 1890, Authorized Architect 1903-12)(Fig.40).
Charles Henry Gale (1863-1953, RIBA, Authorized Architect 1903-18), chief draftsman in PWD 1890. He designed a residence Galesend at 109 The Peak in 1908.
Arnold Hackney Hollingsworth (Engineer, Authorized Architect 1903-27)
Augustus Shelton Hooper (Land Surveyor ~1886, Authorized Architect 1903-19)(Fig.41)
Patrick Nicholas Hill Jones (Engineer, Authorized Architect 1903-10)
Arthur Edgar Wright (1880-, Engineer 1903-29, RIBA, Authorized Architect 1910-29)
Alec Fleming Churchill (Authorized Architect 1911-17)
Edgar William Carpenter (Authorized Architect 1914-31)
Henry Thomas Jackman (1874-1928, Engineer 1903-28, Authorized Architect 1914-27)(Fig.42)

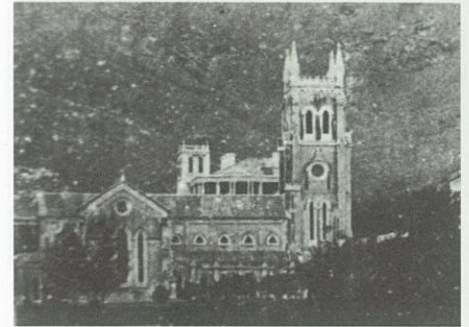


Fig.44 St. John's Cathedral 1849



Fig.45 City Hall 1861

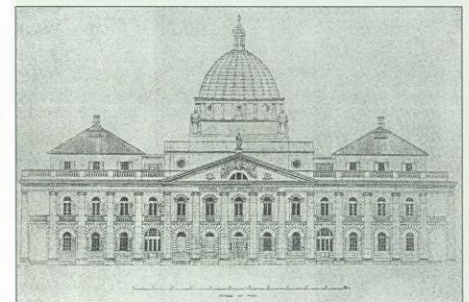


Fig.46 Old Supreme Court 1912



Fig.47 Railway Station 1916



Fig.48 YMCA Central Building 1918

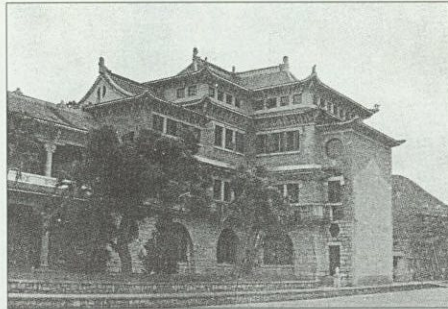


Fig.49 Holy Spirit Seminary 1931



Fig.50 Tao Fung Shan Missionary 1931



Fig.51 Chinese Methodist Church 1932

Isidore Michael Xavier (Engineer, Authorized Architect 1914-41)

Leslie Owen Ross (1882- , RIBA, Authorized Architect 1916-19,29-36,39-41) His signature is found on the elevation of the Central Police Station 1919 (Fig.43).

James William White (-1923, Authorized Architect 1918-23)

Arthur George Warnham Tickle (1887-, PWD Architect 1913-1940, RIBA, FSI, Authorized Architect 1920-39). He taught architectural theory and history at the Queen's College from 1916 to 1927.

Gerald Hollingsworth Bond (1902- , PWD Architect 1933-41, RIBA, Authorized Architect 1920-39)

Henry Edward Goldsmith (Engineer, Authorized Architect 1920-34)

Henry Capell Lowick (Engineer, Authorized Architect 1922-36)

Edward Newhouse (Engineer, Authorized Architect 1922-35)

Henry Joseph Pearce (PWD Architect 1925-41, Authorized Architect 1922-41)

Douglas Sandeman Edward (PWD Architect 1923-41, AIA)

Terence Stanley Crathern Feltham (1896-, PWD Architect 1923->41, RIBA, HKIA 1956).

He was the project architect of Governor Retreat, Fanling in 1934

Julius Ring (BSc.(Eng), Authorized Architect 1923-41)

John Hubert Bottomley (1899-, PWD Architect 1924-, MISTructE, Authorized Architect 1929->41)

Richard John Bond Clark (1896-, PWD Architect 1924-41, RIBA)

Stanley Oliver Hill (1893-, PWD Architect 1924-41, RIBA)

Colin Brown Robertson (PWD Architect 1925-41, Authorized Architect 1924-41)

Alfred Walter Hodges (1893-, PWD Architect 1925-41, RIBA)

Wilfred Herbert Owen (1896-, PWD Architect 1925-41, RIBA)

Ralph S Watson Paterson (Engineer, Authorized Architect 1925->41)

George Darnley Shields (1894-, Engineer 1925-, RIBA)

Harold Stuart Rouse (Engineer, Authorized Architect 1928-39)

Charles Edward Moore (1897-, PWD Architect 1929-41, B.Arch., Authorized Architect 1938->41)

Edward T.E. Nash (1904-, Engineer 1929-, RIBA)

Robert Philip Shaw (1888-, PWD Architect 1920-41, RIBA, Authorized Architect 1933-41)

William Wyllie Clark Shewan (PWD Architect 1933-41, RIBA, HKIA 1956)

Charles Christie Arthur Hobbs (PWD Architect 1934-41)

K. Struan Robertson (PWD Architect 1926-41, Authorized Architect 1937-41)

Richard John Vernall (1901-, PWD Architect 1925-41, RIBA, Authorized Architect 1939->41)

Alec Michael John Wright (PWD Architect 1939-41, RIBA)

John Coleman Charter (PWD Architect 1939-41, RIBA, HKIA 1956)

Charles Herbert Bingham-Powell (PWD Architect 1940-41, RIBA)

Alexander Bruce Purves (Engineer, Authorized Architect 1940-41)

Non-resident architects in Hong Kong 1841-1941

Hong Kong as an international trade port has foreigners from different countries. The British government, foreign investors and missionaries brought in architects or designers from different countries for their buildings. The following list is the name of non-resident architects/designers and their works in HK:

Mr. Hardwicke (London) - St. John's Cathedral 1849(Fig.44). Hardwicke was the original designer in UK. The Cathedral was designed in Gothic style. His design was modified by A.T.Gordon (Surveyor-General) and drawn up by George Strachan before he resigned in 1844. The cathedral was redesigned by Charles St. George Cleverly in Norman style and signed by Gordon in 1846. John Pope (1820-47) civil engineer and clerk of works for the Surveyor-General Department 1844-47, involved in the construction of the cathedral.

ACKNOWLEDGEMENT

H. Hermite (French) – He was the winner of the design competition for the first City Hall 1861 (Fig.45).

Aston Webb and E. Ingress Bell (London) Famous architect in Britain, their works including the Victoria and Albert Museum, Admiralty Arch and the faade of Buckingham Palace. They designed the Old Supreme Court 1912 (Fig.46) and the construction was supervised by PWD architect **Henry George Corrall Fisher** (1870-1941, Engineer 1900-1914, RIBA, Authorized Architect 1903-14).

A.B. Hubback, RIBA (Gov't architect for the Federate Malay States) – He designed the Former Kowloon-Canton Railway Station 1916 (Fig.47).

Harry Hussey (Chicago) – Partner of Shattuck & Hussey. He specialized in YMCA building design. He was the architect of Peking Union Medical College 1919. He designed the Chinese YMCA Central Building 1918 (Fig.48).

Dom Adalbert Gresnigt O.B.S – He designed the Holy Spirit Seminary 1931 (Fig.49)

Johannes Prip-Moller (Denmark) – He designed the Tao Fung Shan Missionary 1931 (Fig.50)

A.J. May (London) – He designed the Chinese Methodist Church 1932. (Fig.51)

Henry J. McGill (New York) – He designed the Maryknoll House 1935

Chu Yue Tat 朱如達(Canton) – He was a civil engineer, assisting the design of Sun Yat-sen Mausoleum, Nanking 1925 and Sun Yat-sen Memorial Hall, Canton 1926. He designed and supervised the construction of San Yuk School 1939 (Fig.52).

Chinese Architects in Hong Kong 1841-1941

There is no name of Chinese architect being recorded until 1903. The earliest record that had mentioned Chinese architect is only one sentence: "I also find Chinese architects for the first time, five in number" in Governor Hennessy's Census Report in 1881. This is the first time that two Chinese names were recorded as "architect" in HK, in the Authorized Architects list 1903. They were **Wong A Cheong** (Authorized Architect 1903-09) and **Wong Kat Son** (Authorized Architect 1903-08). But there is no record of their training background. There was no new Chinese Authorized Architect for the next twenty years until **Iu Tak Chung 姚得中** (Authorized Architect 1923-33) appeared in 1923. He was the partner of Clark & Iu from 1924 to 1937. The situation became better in 1924 that four new Chinese names were appeared in the list: **Siu Ho Ming 蕭浩明** (Authorized Architect 1924-41), he was the partner of **Hewitt & Siu** in 1925 and had his own practice in 1935. He designed buildings for Tung Wah Group of Hospitals; **Wan Seung Lun** (Authorized Architect 1924-27, 29-33), **Wong Sik Lam** (Authorized Architect 1924-27, 29-40) and **Yeung Sik Chung 楊錫宗** (1889- , B.Arch, Authorized Architect 1924-27, HKIA 1956), Young was born in HK and graduated from Cornell, US in 1918. He was practising in Canton after his graduation. He designed the Huanghuagang Mausoleum of the 72 Martyrs, Canton 1919-30, 2nd Runner-up of Sun Yat-sen Mausoleum, Nanking 1925 and 1st Runner up of Sun Yat-sen Memorial Hall, Canton 1926. He went back to HK before WWII. The last Chinese Authorized Architect in 1920s was **Wong Tai Cho 黃泰初** (MIStructE, Authorized Architect 1928->41) in 1928, he had his own practice before 1938 to 1941.

In 1930s, there were more new Chinese Authorized Architects. There was one in 1930, four in 1931, three in 1932, three in 1934, one in 1935, eight in 1938, six in 1939, two in 1940 and two in 1941. The sudden increase of number in 1938 and 1939 may be due to Japanese invasion of china in 1937. Some architects such as Yeung Sik Chung, Robert Fan and Luke Him Sau had never been practised in HK before 1941.

The most famous Chinese architectural practice from 1930s was **Chau & Lee**, founded by **Chau Iu Nin 周耀年** (1901- , MIStructE, Authorized Architect 1930->41) (Fig.53) and **Lee Richard Edmund 李禮之** (RIBA, Authorized Architect 1931->41, HKIA 1956). Projects completed before 1941 were St. Mary's Church 1937 (Fig.54) and China Congregation Church 1941 (Fig.55). The



Fig.52 San Yuk School 1939



Fig.53 Chau Iu Nin

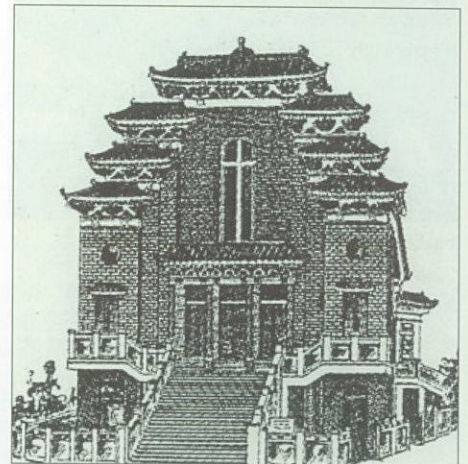


Fig.54 St. Mary's Church 1937

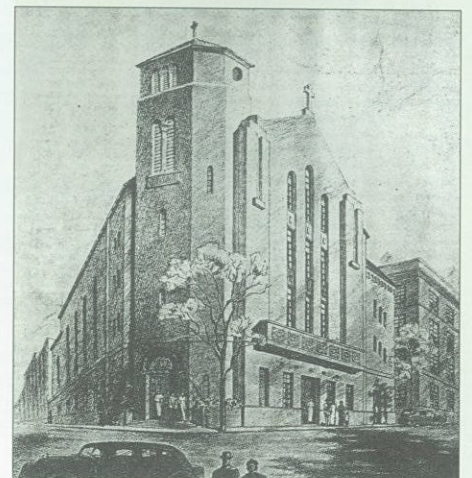


Fig.55 China Congregation Church 1941



Fig.56 Chan Wing Gee



Fig.57 Ng Kin Chung



Fig58 Holy Trinity Church 1937



Fig59 Lee Young On



Fig60 Li Hin Lung

church was designed by **Chan Wing Gee 陳榮枝**(1902-79, B.Sc(Arch), Authorized Architect 1938->41, HKIA 1956)(Fig.56). Chan practiced with most of his time in Canton before 1941. **Chan Ting Shan 陳靜山 and Lai Shiu Wing & Co.** were also appeared as architects & engineers firms in 1930s directory. In 1938 directory, the following architects & engineers practices were found: **Chiu Kwan Chee 趙君慈**(BSc(Eng), Authorized Architect 1932->41); **Iu Tak Lam 姚德霖**(BSc(Eng), Authorized Architect 1934->41); **Wong Cheuk Tong 黃灼棠** (Authorized Architect 1932->41); **Chan Chiu Ting 陳昭庭** and **Y.L.Wong 黃玉麟** Other than the Authorized Architect, **Ng Kin Chung 吳建中**(Fig.57) designed the Holy Trinity Church 1937 (Fig.58)

In the 1940 & 1941 directories, the following new names are found: **Fok Nai Hang 霍乃鏗**(Authorized Architect 1941->41); **Fung Tsun 馮駿**(RIBA, Authorized Architect 1935->41, HKIA 1956); **Ip Hin Fong 葉衍芳**(BSc(Eng), Authorized Architect 1931->41); **Ing, William Sue 吳兆彪**(Authorized Architect 1934-41,>41); **Kuo Yuan His 過元熙** (M.Arch, Authorized Architect 1939-40,>41, HKIA 1956); **Lee Young On 李揚安**(1902- , M.Arch, Authorized Architect 1938-41,>41, HKIA 1956)(Fig.59); **Li Hin Lung 李憲龍**(1910- , RIBA, Authorized Architect 1938->41, HKIA 1956)(Fig.60). Architect to the Chinese Temple Committee 1938-59; **Mok York Chan 莫若燦**(Authorized Architect 1934->41); **Pun In Tat 潘賢達** (Authorized Architect 1931-41); **Tam Heung Shing 譚向成**(Authorized Architect 1938->41) and **Yue Shui Chiu 余瑞朝**(Authorized Architect 1939-41).

There are Chinese Authorized Architects who did not have record of practice before 1941. They were **Yuen Tat Cho 阮達祖**(1906- , RIBA, Authorized Architect 1938->41, HKIA 1956); **Juncan Chang** (AADip, Authorized Architect 1939-40, HKIA 1956); **Robert Fan 范文照**(B.Arch, Authorized Architect 1938-40,>41, HKIA 1956), . He was a significant architect in Shanghai before 1941 and in HK after 1949. He was the winner of Sun Yat-sen Mausoleum 1925; **Iu Hau Kwong** (Authorized Architect 1940-41); **Kwan Wing Hong 關永康**(1910-73, RIBA, Authorized Architect 1938-40,>41, HKIA 1956); **Lau Kui Cho** (Authorized Architect 1939-40); **Lau Shing Ki** (Authorized Architect 1939-40); **Lee Lemm Ping** (Authorized Architect 1931-35); **Luke Him Sau 陸謙受**(1904-1992, RIBA, Authorized Architect 1932-34,>41, HKIA 1956), he designed the Bank of China building in Shanghai; **Mak Chun Poy** (Authorized Architect 1938-40); **Wong Ah Wee** (Authorized Architect 1940-41); **Faitfone Wong 黃培芬**(AIAA&S, Authorized Architect 1939->41, HKIA 1956) and **Chien Nai Jen 錢乃仁**(B.Arch, Authorized Architect 1941->41, HKIA 1956). Chien was the last Authorized Architect in the list 1941.

Conclusion

From the names of the above architects, we can observe that they came from different nations. Most of them were British. The rest were Chinese, French, Portuguese, Dutch, Italian, etc. Their presence reflects the social situation of Hong Kong in the past. After WWII, some of the architects practiced before 1941, resumed their practice. 22 of them were even the founding members of the Hong Kong Architects' Society in 1956 (Former name of HKIA). Although we don't have much information other than the name for most of the architects above, it is worth to record their presence in our architectural history. More research work should be done to know more about who they were and what they had done in the past. Each one of them had contributed to the development of Hong Kong. Their names should be remembered.

ACKNOWLEDGEMENT

I would like to acknowledge the following people who gave me great help in my research work:

Ms. Chan Lai Kui on Palmer & Turner, Ms. Grace Chan and Mr. Alex Lui on Lee Theatre, Mr. Chan King Sang on Old Tsan Yuk Hospital, Ms. Stefanie Graf on Danby in Shameen, Mr. Lee Chung Ming on Van Wylick, Mr. Tim Lui on Lui Seng Chun, Ms Sophia Mak on San Yuk School, Ms. Grace Wang on Chinese architects, Mr. Cheng Po Hung, Prof. Siu Kwok Kin, Dr. Dan Waters and Mr. Jason Wordie on source of information.

Reference / source of photo:

Directory

The Hong Kong Almanack and Directory 1846, 1848, 1850
The China Directory 1859, 1861 to 1864, 1867, 1872, 1874, 1877, 1884, 1914
Directory & Chronicle for China, Japan, etc. 1922, 1923, 1925 to 1928, 1933 to 1941
The Hong Kong Directory and Hong List for the Far East 1883, 1893
Business Directory of Hong Kong, Canton & Macao 1938
Hong Kong Dollar Directory 1939
Hong Kong Album 1960

Directory of British Architects 1834-1914

香港商務店名錄 1930

香港華商總會年鑑 1932

港澳商業分類行名錄 1940, 1941

Hong Kong Government Document

Governor Sir John Pope Hennessy on the Census Report 1881
The Hong Kong Government Gazette 1903 to 1941, 1946, 1956
Civil Servant List 1904, 1926 to 1928, 1930, 1934, 1941
Hong Kong Report of Commission 1884
Museum of History Photo Collection

Newspaper

Hong Kong Daily Press 1927/11/5, 1933/6/14
The Hong Kong Telegraph 1908/3/27, 1917/6/8, 1918/10/10, 1925/4/2, 1927/3/19, 1927/9/28, 1930/3/1, 1936/9/25
The China Mail 1888/9/28, 1889/1/18, 1892/4/3, 1916/9/11, 1933/10/27
"The China Mail" 76th Anniversary number, March 1921

South China Morning Post 1918/10/10

吳志華·香港文藝復興的30年代, 明報2005/3/27

Book

Cheng, Po Hung. Early Hong Kong Tramways
Cribb, Joe. Money in the Bank
Hall, Peter. In the Web
Hong Kong Land Investment & Agency Co. Ltd.,
In Far Eastern Waters 1933
Hong Kong Museum of History. History Around Us
King, Doreen. St. John's Cathedral Hong Kong
La Salle College. La Salle College 70th Anniversary 1932-2002
Mattock, Katherine, Jill Cheshire. The Story of Governor House
McDougall, Katrina and Bruce Pettman. The Ohel Leah Synagogue
Moss, Peter. Another City Another Age
Paterson, E.H. A Hospital for Hong Kong: the Centenary History of the Alice Ho Miu

Purvis, Malcolm. Tall Storeys: Palmer and Turner, Architects and Engineers – The first 100 years
Smith, Joyce Stevens. Matilda: her Life & Legacy
South China Morning Post. Hong Kong Then and Now
St. Teresa's Church. St. Teresa's Church: Golden Jubilee 1932-1982
The Lord Wilson Heritage Trust. Hong Kong's Heritage: A History of 6,000 Years

Tse, Liu Francis. Ho Kom Tong: A Man for all seasons
Urban Council of Hong Kong. City of Victoria
Urban Council of Hong Kong. The Hong Kong Album
Walker, Anthony & Stephen Rowlinson. The Building of Hong Kong
Warner, John. Fragrant Harbour: Early Photographs of Hong Kong
Hong Kong Illustrated Views & News 1840-1890
Wong, Wah Sang, Amy Liu Eds. Dept. of Arch.
HKU Measured Drawings Vol. II

Yow, Mok Shing Stephen. Collection of Banyans and Soapstones / The Ultamia

十九世紀香港西人群體研究：愉寧堂的演變

王誌信·道濟會堂史

何佩然·點滴話當年：香港供水一存五十年

香港商業彙報，香港建造業百年史

高添強·圖片香港今昔

施其樂·歷史的覺醒

黃澂·晚清寓善華西洋建築師述錄

馮邦彥·香港地產業百年

彭長欽·嶺南近代著名建築師

駱顯慈神父·華南總修院歷史考究

蕭國健·沈思編著，香港市區文化之旅

龍炳頤·香港古今建築

鄭寶鴻·香江道貌：香港的早期電車路風光

港島街道百年

九龍街道百年

循道衛理聯合會香港堂金禧紀念特刊

基督教香港崇真會救恩堂立會一百週年紀念特刊·1867-1967

基督教東亞道友會道風山基督教叢林開山六十週年紀念特刊 1930-1990

華南聖神修金禧紀念特刊1931-1981

聖瑪加利大堂鑽禧紀念特刊

聖德肋撒堂建堂七十週年紀念特刊

聖公會聖三一堂鑽禧特刊1890-1965

Journal/Article

Hong Kong & Far East Builder 1941

Ng Kai Chung, Sid Chu, Century of Hong Kong Architecture
Carl T. Smith, Early European Building in Hong Kong, Chung Chi College
Bulletin Nos.38, 1965

Hideo Izumida, British Architects in East and Southeast Asia 1830-1940

Web site

www.thepeerage.com ;

Hong Kong Public Record Office www.grs.gov.hk

WebCat at RIBA;

http://freepages.genealogy.rootsweb.com

Miscellaneous

Annual Report of the Hong Kong Society of Architects 1957

香港女建築師專訪： 吳鄭倩微女士

訪問員：黃嘉恒/陳智星/黃詠怡/劉穎樺

她未必是香港第一位女建築師，但大概是早期在香港註冊並執業的第一位「女則師」(女建築師)。

60年代的香港是一個比較保守的社會。作為一位「女則師」有一定的困難和壓力，尤其是在一個當時都被認為是絕對屬於男性的一個行業。所以，希望透過「香港建築師學報」的五十周年紀念主題，跟大家一起回顧及分享吳鄭倩微女士的一些回憶和經歷。



問：可不可以就您的背景作簡單的介紹呢？

答：我是1958年香港大學建築系第四屆的畢業生。畢業後，便加入政府建築署，經兩年的實習之後，就去考建築師註冊試，拿到了執業牌照，一共做過三份工作，老闆也是早相識的朋友，所以我從來未嘗過見工面試的驚惶，第一份工是全職的，這是60年代，建築項目也大部份是(住宅樓宇) Apartment Buildings 做到公司收縮結業，我便回家做家庭主婦，後來的兩份工，分別是70和80年代也是被說服去幫手。當時為了做妻子和母親的責任，我聲明只做(兼職)Part-Time，但是總是由兼職做到(全職) Full Time，最後太多(超時工作) Over Time，我便決定不做回家去，所以我的工作經驗是很分段，但總算參與及見證了60、70及80年代的香港建築師行業。

問：作為一位「女則師」在當時的社會一定是困難的吧？

答：這一定是的。記得讀大學時，需要找暑期工實習。見老闆時他跟我說：「我不是不想請你在這裡做暑期工，但你也要替我想想，如果我請你的話，我需要建一間房把你和那些男人隔開，抑或我建一間房去困著那群男人？」其實，我在大學裡已經不太介意那些男人的粗口和吸煙，但當時那老闆就覺得女人是不可能在那種環境工作的。不過，最後也給我找到一些相關工作。

問：那在政府裡工作，待遇好一點嗎？

答：當然沒有！那時在政府工作亦很不公平。因為我做了一年便結婚，結了婚的女士被定為臨時員工(Temporary Staff)，因此每月只得一天假期，而當時男員工(Permanent Staff)，便可有三天假期。因為當時政府認為女人總有一天拿產假，有了家庭不太專心，故先抽



起每月兩天假期。所以，如果我不是不斷的生孩子，那就損失了！還有，當時尚未同工同酬，男人的薪金是\$600，但女人就只有不到\$500。現在想起來也有一點氣憤，It's Really not fair! (真的不公平!) 看著男同學們的待遇總比自己優厚，所以考了執照就辭職了。

問：在私人公司工作，會好一點嗎？

答：比較好。我每份工的公司也只有兩個建築師，老闆之下就是我了，所以在公司也沒有感覺到甚麼不公平。自己管理所有的工程，一切老闆不做的事情都是我做的。從起草圖紙審批訂章合約到地盤施工都是一個人去做，尤其是對付政府各部門規範的要求，也是我去應付。因為在政府工作過，對審批的手續就很熟識。對工程的管理及進度控制，也有正統方法去處理，便不覺太困難。

問：那作為一位「女則師」，對外工作有困難和阻礙嗎？

答：當時的「女則師」真的很少，沒有可模仿的對象，只好自己摸索。需要平衡自己，需要轉換自己的身份調校思想。不當自己是一位女士，我會以男士的角度去處理每一件事情，我不會讓別人因為我是女士而小看我，不會令自己感到害怕。當時是無人會相信一位女建築師的，記得當時客人找上我公司時，總把我當成是秘書，問我建築師在那裡。我說「我就是」的時候，他們總帶著疑惑的眼光看我。因此，當時我吩咐秘書一定要在客人面前稱呼我為「鄭則師」；不是因為我要抬高自己，而是要別人清楚知道我的「建築師」身份，而不是秘書或甚麼其他的。到地盤時，一聲：「鄭則師來檢查工地了！」工人們便會知道這是一位「則師」而不是無知女士闖進了工地來閒逛。但回想起來，做「女則師」也不是沒好處，有很多時遇到嚴厲

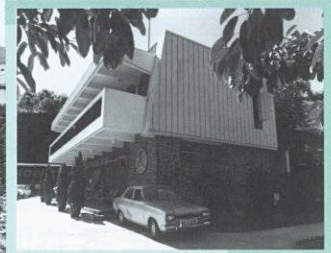
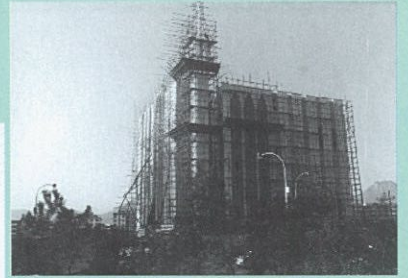
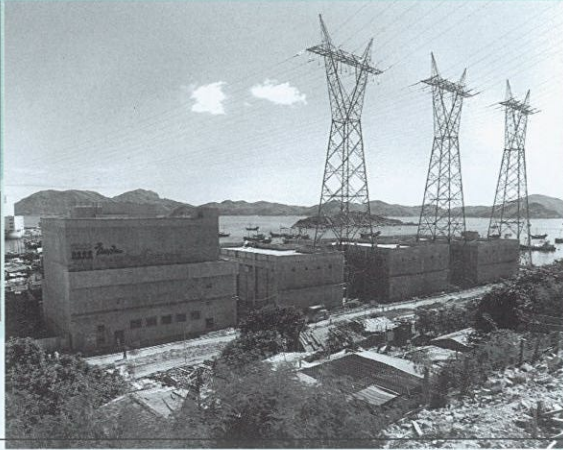
的部門主管，也不至於被他粗口罵。

問：那時去地盤開會，那些男工人對你有什麼反應呢？有發生一些趣事嗎？

答：當時的大部份承建商和地盤管工也算是很有風度的。到地盤開會前，他們一定會有專車到我公司接載。檢查地盤時，他們總會先為我開路，確保沒有工人赤裸上身甚至小便，使我不會遇到太尷尬的場面。而我相信這些事情便不會發生在「男則師」的身上了。當第一次查地盤時，那些工人一定帶著奇異的眼光。但我也說過，我需要對自己說盡量不要當自己是女性。就算地盤很骯髒，自己也要硬著頭皮去檢查每一個角落，不可讓別人覺得女性是不行的，或存有建築這個行業是不適合女性的想法和批評。

問：之前你提到你第一份工做到那間公司結業就休息了一段較長的時間，當時大約是70年代吧。休息直到第二位老闆叫你幫忙時，你又開始再工作了，可以說一說你在第二份工作時的事情嗎？

答：我略述第二和第三份工作吧！70年代初，那間公司規模比較大，有自己不同的部門，也有各種類的建築項目：如大小住宅、商住樓宇、教堂、學校、工廠等，有一段時間，老闆去了移民，以致我同時處理10-20多個項目，對外對內的工作都要(超時工作) Overtime也做不完，很吃不消，便又不做了，到80年代初又被游說去幫忙，我又提出做兼職Partime，並只負責做行政，因為做設計是完不了的工作，下班後也腦袋不停的想著各種方案，唉！我承認女人就是差這一點吧。這時期，國內開始開放，我也碰上一些港人投資國內的建築項目，有在廈門、廣州、上海、北京等的常要到國內傾談。



問：那是屬於比較早期的國內工程哩！那時國內工程僱用香港建築師，還是在起步階段，這類項目當時是比較少嗎？

答：是不多，因剛起步，國內也是在摸索，過程是異常的不便。當時是沒辦法去訂來回機票的。每一次也不知道要去多少時日，都是先到達開會地點，一直在酒店裡等，忽然通知你要開會，便立刻去。完了又立刻去撲飛(ticket)回港。現在就不會這樣吧！

問：在「大陸」出差時，會否因為女性的關係而受到忽略或歧視呢？

答：這也不會。當時的「大陸」女性反而頗被重視，而且很多女性顧問甚至官員也一起開會的。另一方面，現時香港也漸漸比較多女建築師了。女性擔任重要角色應該也不是怎麼的一回事了。

問：當時「大陸」的建築實踐跟香港的有什麼差異呢？

答：當其時國內在建築規範上是比較封閉的。很多時我們向他們查詢有那些建築條例及規範可依據時，他們有往往回答：「有，但不可以透露給你們知道。」可能是國家機密吧！哈哈！。總是要我們先設計，然後再慢慢給我們意見，不像一般香港的項目有很清楚的regulation(法例)去規管，所以我們也只好蒙著頭去試。後來跟他們熟絡了，也有私底下給了一些國內的規範給我們參考。看完後便即日歸還給他們。所以當時便每天在酒店裡速讀和做筆記，速記速忘，今天已不記得了。現在國內大部份的書局應該都不難找到有關建築規範的書籍吧！此外，跟大陸的 Contractor (承包商)一起工作也很困難，他們有自己的方式去做！可能因為我是女士的關係，他們根本就不去理會我的指示，所以要不斷打電話去提示他們，有時甚至要大聲指責他們，衝突之中，他們也曾拋出質問我這建築師是「幾級」有沒有他們主管的高。可以想像一下那些人既不習慣香港的辦事方法，還要每天給一位女士罵，心裡當然不快。所以，作為一位「女則師」，當然有一定的困難。一方面需要當自己是一位男性的態度去工作，也要避免自己是女性而讓別人欺負。

問：宏觀現時的事業女性都有同樣的壓力，工作上都會比較 tough (強硬)。尤其在地盤，他們都會比一般女性強硬點？

答：是的，女士需要剛強過人。不單是剛強，還需要有足夠學識。不可能一知半解，而是需要全部都認識。如果女人在一件事上帶點猶疑，別人就會容易有「女人」都是不稱職的感覺。如果你示弱，就使他們更加欺負你。好像在地盤的時候，「判頭」會說：「鄭則師，是爬不到天面水箱去檢查的。」我說：「當然要去，要不然怎樣知道做得妥當否？」自己就要硬著頭皮去爬上那條「貓梯」去最高的屋頂上。

女人如果沒有信心和猶疑不決，別人就很容易把女人放在「女人是不行的」、「是弱者」的位置。所以很不想別人把自己放在「女人是不行的」的那一邊。

問：為什麼選擇做建築師？

答：家庭背景都有關，父親是香港戰後早期的建造發展商！還記得當時選科，自己沒有興趣當教師，那已經不用考慮文科和理科。那是通常選文科的女士，大多數畢業後就去教書或是結婚。那理科就去做 lab job(實驗室工作)或是教書。當時的香港沒有太多的工作可選擇，而香港大學也只有五個 Faculty (學系)，不讀文科和理科，那剩下 Architecture (建築)，Medicine (醫學) & Engineering (工程)，自己考進大學時 Biology (生物)的成績也不大理想，那剩下 Architecture 和 Engineering 的選擇。父母當然不想我去選修 Engineering(工程)，因為作「工程」需要整天在外面日曬雨淋很辛苦，怎嫁得出哩！所以剩下來只有 Architecture(建築)。哈哈.....

問：當時有多少女學生在港大修讀？

答：記得第一屆有四個，第二屆有二個，第三屆有一個，我是第四屆的六個之一，跟著的三屆，每屆也只得一個。在我的記憶中，這十多個女畢業生中雖然有些考了執業牌照，但只2-3個在香港做這行業，所以我也可以算是早期在香港出產又執業(Practice)的「女則師」了。

問：有什麼忠告給現今的女則師嗎？

答：不要想做「女則師」，不要讀 Architecture，哈哈！要不然就需要盡力去學去做，建立自己的地位，不要給別人看不起。不要讓別人感覺女人是不適合，不可以太過 Feminine (女性化)，但不是叫你去變成一個「男人婆」。而是要有一個目標和些少野心，如果沒有也可以選擇去嫁一個建築師，那讓他去做，哈哈！不過也不一定是好的事，兩人可能整天會為設計而爭吵，不過最好還是不要選讀建築，哈哈！

問：最後，作為「女則師」的妳，可有滿足感嗎？

答：當然會為自己當過一位女建築師而感到自豪。雖然自己從來也不求名利，只知道辛苦學到的東西要實踐出來，如果求名利就會去自己開業了。回想一共做了十多年，滿足感是有的。自己也建成過不少的建築物，而現在住的地方也是自己親手做設計的，到現在還住得很滿意。退休後，還有跟以前的同事聯絡，也有和一些移民了的同學在不同的國家聚會，真的很開心！

KA802

上的醒覺

外面的天還是黑壓壓的，街燈尚陶醉在自己昏黃的光暈裡，懶洋洋地數著漫天綿密的雨點，前一晚太太預設的電話叫醒鈴聲已在響個不停。好像與鄰居有什麼十冤九仇，非要在夢發到最甜的這一刻把大家吵醒不可。分戶牆實在太薄了，根本起不了顯著的隔音作用，平日隔壁馮老師夫婦管教孩子都聽得有點清楚，今晨的鈴聲恐怕已招來了一陣詛咒。幸虧那是出自一位中學國文教師的口中，相信好歹也會有點殘餘的文化味道。

梳洗本來就方便不過，從房間穿越用餐空間走到衛生間絕對不會超過三步，太太的步幅小一點，可能要走四步。對，那是用餐空間，因為那根本稱不上一個飯廳，只是自欺欺人的在牆壁的兩層書架下放了面大鏡，造出點虛擬空間，前面放了張可旋轉的玻璃桌。其中一人還需側著身子，擦著鏡子，邊走邊旋轉桌面才能擠進裡面的椅子，所以鏡子從來都不用太多的打掃拂拭。

匆匆梳洗完畢，連早點也來不及吃便拖著拉桿箱上路了。近年來出門公幹的頻率越來越高，每次做完「空中飛人」回來，若要把拉桿箱清理完畢回衣櫃頂的大行李箱內，既沒時間也不現實。漸漸地，拉桿箱變成了廳中常置的一件傢具，把大門擋住一部份。每天下班回家，公事包亦只能擱在其上，連換鞋的空間也犧牲了，也實在無可奈何。

雨點漸漸由綿密變成了滂沱，打在出租車上竟然有點鏗鏘，機場快線的情況雖然好一些，但還是不能追回半點失去的睡眠，乘早機出差永遠就是如此惱人。今年雨季似乎來得特別早，家中單薄的外牆不知是否又在「冒汗」？室內的油漆入伙不久已開始在剝落，花了那麼多心思配襯的顏色早已老化褪

掉，床邊反而斑斑駁駁的衍生了一組半天然的圖案。細心分析一下，再加點想像，相信不難找到半點黃金分割^{*1}的玄機。十公分厚的混凝土外牆本來就太薄，雨季滲漏已差不多成了生活的一部份。床頂樓板中還有道時好時壞的滲水裂縫，應不會是結構的問題吧，至少回答太太時是這般口徑，職業的關係令答案多少有點似是而非的權威性，幸好從來沒有追問下去。今天的雨還下得不夠大，相信還不至重演當年出動塑料布保護床鋪的偉大場面。這房子真的有點像人，年紀越大越有性格。

終於坐進了機艙，安頓下來，合上眼睛，繼續努力尋找那失落的夢，畢竟起得太早了，實在有點累。晨早八時的航班？！實在有點過份！然而，越是想安靜下來，思潮卻越是在腦裡打轉。出來辦事已十七年多了，近月來與太太在考慮換一個大一點的居所，才發現自己已不知不覺間跌到貧窮線之下。像樣一點的單位，寬趟一點，樓齡不太老的，交通不太阻隔的，動輒要七、八百萬。有點景觀，條件好一點，區位理想一點的便要上千萬圓。那麼配套齊全一些，帶個會所連泳池的，更是匪夷所思的千五至二千萬大圓以上。那還不是什麼豪宅，只不過是些令人生活得有點尊嚴的居所。

十多年來營營役役，今天只不過是希望改善一下生活空間，卻發現就算把畢生積蓄押下去，換來的也只是些需要經過很大妥協才能接受的物業，壓根兒談上是夢想家園。更諷刺的是作為一位建築師，天天在為人家打造安身立命之所，傾盡心力，到頭來自己卻買不起一處較理想的住處，實在有很大的挫敗感。每天在考慮的什麼什麼大面寬、短進深，什麼什麼穿堂風、採光取暖，什麼什麼可持續性環保概念，什麼什麼客廳、主臥、廚房的起碼尺度開間，一下子都成了紙上談兵。

實物倒是建了不少出來，人家亦已住了進去。可能這一刻正剛剛從睡夢中甦醒過來，在造早餐，在不經意地享用了那高效的廚房飯廳佈局。亦可能正呷著暖烘烘的牛奶，咬著塗滿了蜜糖的包，欣賞著園中綠油油的景觀，想著今天下班回家燒什麼菜，哄哄丈夫及家人。也可能在咒罵著建築師把陽台設計得還不夠大，這個週末把公司同事招回來連一檯麻將也放不下，只夠擺張小桌，鬥鬥地主^{*2}。這一切一切突然間變得遙遠了，彷彿從來沒有與我發生過任何關係。有種「統如三鼓，鏗然一葉，黯黯夢雲驚斷」^{*3}的失落感。

原來一直都以來都是在為他人作嫁衣裳，把自己累壞了之後回到那三十五平方米不到的斗室中，兩口子相依為命，自以為精神生活很富足。心力稍為恢復便馬上回到工作崗位上，繼續為他人勞動。這根本就是奴隸一般的生活，一種週而復始的自我催眠，聰明背後的愚蠢。

怎樣也要把這悲哀的情況改變過來！！！！



天涯倦客

乙酉年三月初五·晨·港至滬KA802上

註：

- *1 黃金分割—Golden Section 1比1.618。
- *2 鬥地主—華西地區極流行的紙牌賭博遊戲，玩法有點像香港的「鋤大弟」。
- *3 宋詞，蘇軾·永遇樂·「夢盼盼」。

THE AFTERMATH OF HAPPINESS

by Chung Wah Nan

After the publication of my essay <On Happiness> in the HKIA Journey (Issue 42, 2nd Quarter 2005) I have received numerous comments from members and friends. Their comments are so varied and interesting that they warrant recording for members' further information, particularly for those who wish to write or just started writing. For this purpose I will try to record mostly criticism on what not to do. But this does not mean to exclude some funny and meaningful remarks.

SCHOOLMATES

The first person to congratulate me was a fellow member as well as a primary schoolmate (before the Second World War) Andrew Lee who rang to say he really liked and enjoyed reading my article. We all know in the institute that Andrew is a polite gentleman. But he need not have to ring me to say anything if he didn't mean it. So I politely thanked him. For my own ego I also willingly believe him.

Another primary schoolmate from the same school as Andrew wrote from San Francisco and said that the article was unnecessarily long. He is a retired professor (Chinese Literature, also major in music and education). He emphasized the word "unnecessarily" and pointed out that a point could be made sufficiently clear without over stretching; the second bad habit of mine, apart from being long winded, was that I jumped suddenly from one point to another, sometimes in the middle of a same paragraph, causing the readers extra effort in following up my train of thought, at the risk of losing the first point. "Do you get my point?" I wrote back and thanked him for all his well-meant criticism and acknowledged that I got his point. As if to make sure that I really have got his point he sent me several quotations on "happiness" and wrote "These are good examples of economic use of words! There is no point in length. One or at the most two sentences could make a point very precise." I felt like a schoolboy taking lessons in composition. For members' interest here are the quotations:

"Happiness makes up in height for what it lacks in length."

Robert Frost

"Happiness is the meaning and purpose of life, the whole aim and end of human existence." Aristotle

"Happiness depends, as Nature shows, less on exterior things than most suppose." William Cowper

"There is no duty we so much underrate as the duty of being happy."
Robert Louis

Stevenson

"Happiness is excitement that has found a settling down place, but there is always a little corner that keeps flapping around." E. L. Konigsburg

"Happiness is a wine vintage, and seems insipid to a vulgar taste."
Logan Pearsall Smith

length (sounds a very familiar remark). He also said that young and busy architects just would not have the time to read it when they saw the endless pages. He might not be a good critic but at least he is honest.

A member who should remain anonymous remarked that I should not write about God. "When you are a non-believer you should leave the subject alone."

MY SON

My son telephoned from Dubai to say "Daddy, it's a very good article." I didn't tell him or anyone else that the article was originally started as a letter to him! Now, no wonder Tim said that some of the contents tended to be too personal. The article is in a way "An Open Letter to My Son". He is a forty-year old married man (happily I hope) with two gorgeous daughters who just love fairy tales. I hope they will enjoy reading the story about the beautiful maiden descended on earth from heaven and fell in love with a young man written by their grandfather when they become teenagers. One day I will tell my San Francisco retired professor that being long winded and "stretching a point" seem to be a bad habit of parents and grandparents the world over.

MEANWHILE

I wish to thank all my friends and members who had made the brave effort to read my tiresome and long article particularly those who bothered to make some frank, constructive and useful comments. I hope there will be more to come.

Meanwhile, I too have collected some quotations and wish to share with you:

"A happy traveler is the one who travels light without unnecessary burdens."

"He who seeks happiness shall never find it until he realizes that happiness lies in the seeking."

"Knowing how to live is happiness. Knowing how to face and accept death is blissful happiness."

"If you are happy now, be prepared for changes, for nothing lasts forever."

"Unhappiness comes from the brain. Happiness originates from the heart."

"Happiness descended from heaven upon me the moment I felt comfortable with my mediocrity, incompleteness and insignificance."

"He who makes others happy is a happy man."

"To know and understand others require wisdom. To know and understand oneself is happiness."

"What makes you happy is also what makes you unhappy."

"When you are old, nodding by the fire, happiness is the warmth radiating from the fire."

"Let it be! Happiness or unhappiness can only last as long as you live."

It is a pity that I forget the names of authors of the above wise utterances. Is forgetfulness a symptom of old age or a blessing? Or rather: forgetfulness is one of the few blessings of getting old! How can I remember what I read especially on wise sayings. Perhaps young and kind readers can help and old and wise ones can guess.

In any case I am quite happy that <The Aftermath of Happiness> is much shorter than <On Happiness> whether you get my point or not is another matter.