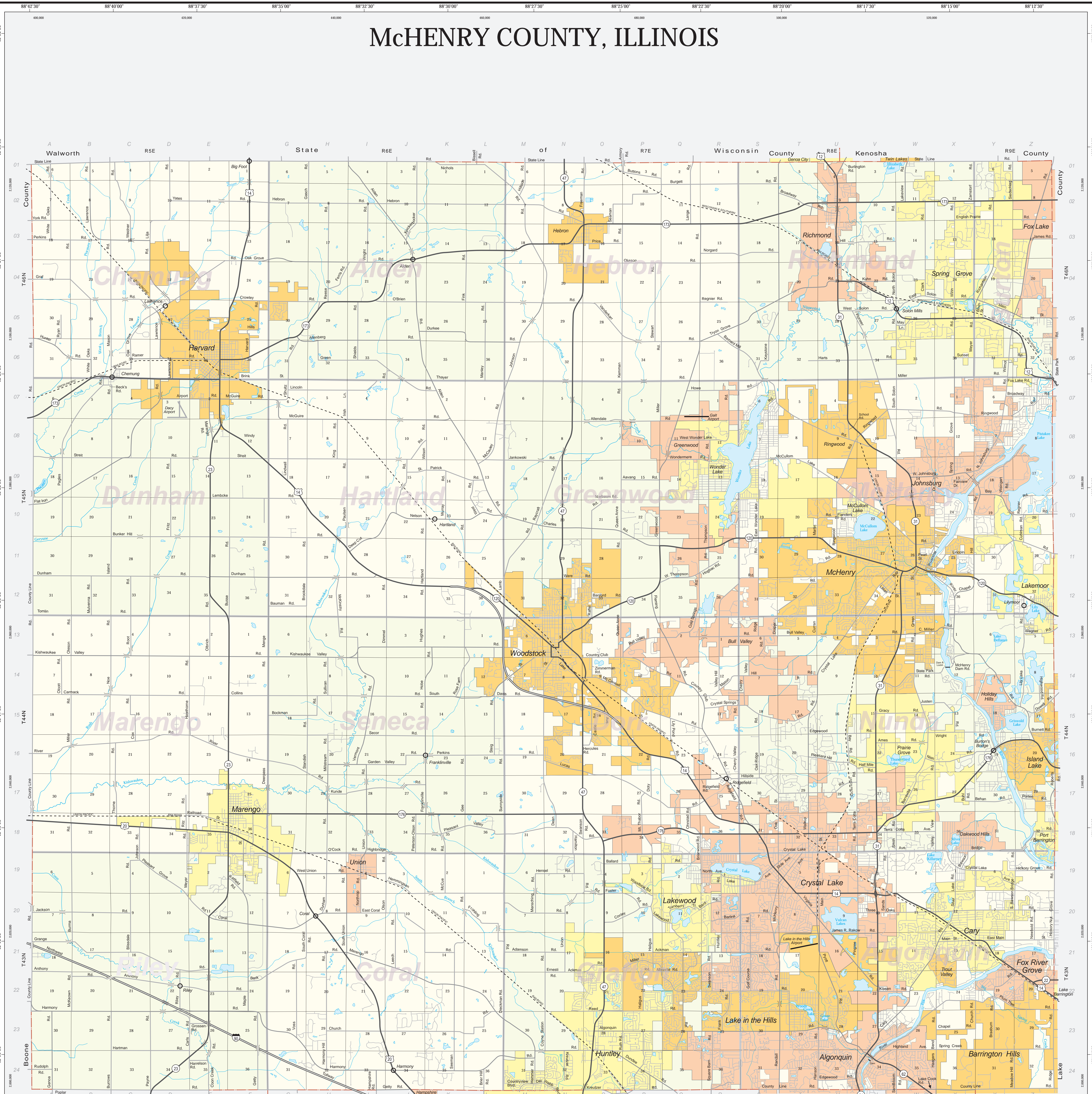
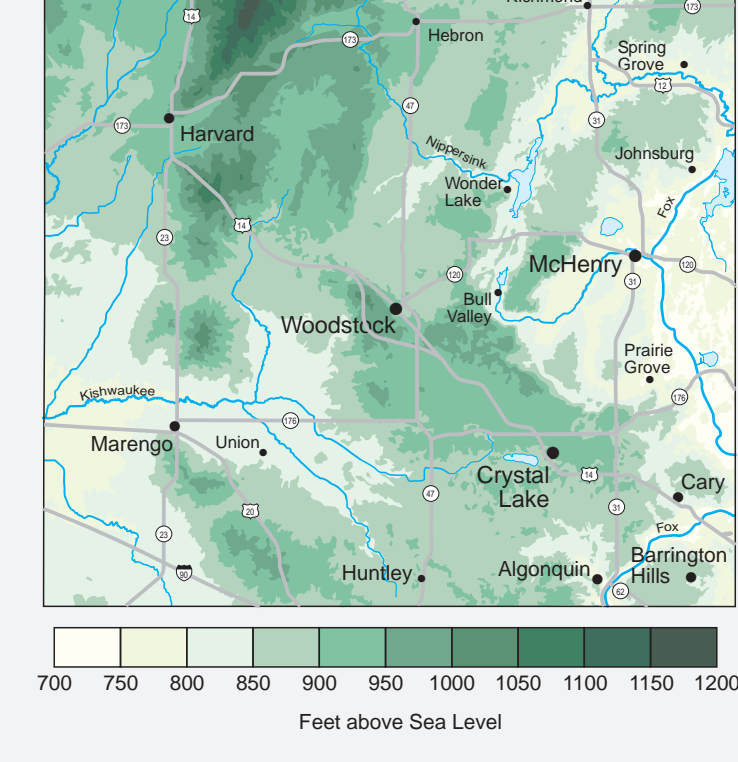


McHENRY COUNTY, ILLINOIS



MAJOR COUNTY-WIDE ROADS			
Adams Road P09	County Line Road P09	A08	A22
Algonquin Road P09	County Line Road P09	S24	S24
Alton Road P09	County Line Road P09	S24	S24
Alton Road P09	County Line Road P09	S24	S24
Alton Road P09	County Line Road P09	S24	S24
Alton Road P09	County Line Road P09	S24	S24
Alton Road P09	County Line Road P09	S24	S24
Alton Road P09	County Line Road P09	S24	S24
Alton Road P09	County Line Road P09	S24	S24
Alton Road P09	County Line Road P09	S24	S24
Alton Road P09	County Line Road P09	S24	S24



TOWNSHIPS					
Alton	Alton	Alton	Alton	Alton	Alton
Alton	Alton	Alton	Alton	Alton	Alton
Alton	Alton	Alton	Alton	Alton	Alton
Alton	Alton	Alton	Alton	Alton	Alton
Alton	Alton	Alton	Alton	Alton	Alton
Alton	Alton	Alton	Alton	Alton	Alton

INFORMATION ON THIS MAP MAY CONTAIN INACCURACIES OR TYPOGRAPHICAL ERRORS. INFORMATION MAY BE CHANGED OR UPDATED WITHOUT NOTICE. EITHER EXPRESS OR IMPLIED, INCLUDING WITHOUT LIMITATION, ANY IMPLIED WARRANTY OF MERCHANTABILITY, SPECIAL USE, OR FITNESS FOR ANY PARTICULAR PURPOSE. THE USER AGREES TO HOLD THE COUNTY OF McHENRY HARMLESS FROM ANY AND ALL CLAIMS, DAMAGES, LOSSES, OR EXPENSES, INCLUDING REASONABLE ATTORNEY'S FEES, THAT MAY BE ASSERTED AGAINST THE COUNTY OF McHENRY AS A RESULT OF THE USER'S USE OF THIS MAP. ORIGINAL BASE MAP COMPILED THROUGH THE COOPERATIVE EFFORT OF NORTHERN ILLINOIS UNIVERSITY, DEPARTMENT OF GEOGRAPHY (LABORATORY FOR CARTOGRAPHY AND SPATIAL ANALYSIS) - 1993

Roads are shown normally as per plates. All roads may not be physically built as depicted. Please report any discrepancies to the Department of Planning & Development.

0 1 2 3 Miles
0 4000 8000 12000 16000 Feet

Base map features adapted from U.S.G.S. 1:24,000 scale series.

06/2009:cjm
Planning & Development