

NEW ZEALAND RUGBY UNION

Competition Regulations Handbook • 2009

Contents

Air New Zealand Cup & Heartland Championship • Key Dates	3
<hr/>	
Player Eligibility	
<hr/>	
Player Eligibility Flowchart – Air New Zealand Cup	7
Player Eligibility Flowchart – Heartland Championship	8
Process for Confirming Players' Eligibility	9
IRB International Eligibility Form	10
NZRU Player Eligibility Regulations	13
<hr/>	
Player Movement	
<hr/>	
Player Movement Flowchart	27
Captured Players List	28
NZRU Player Movement Regulations	47
<hr/>	
Domestic Competitions	
<hr/>	
NZRU Domestic Competition Regulations	59
<hr/>	
Ranfurly Shield	
<hr/>	
NZRU Regulations for the Ranfurly Shield	75
<hr/>	
First Class Fixtures	
<hr/>	
NZRU Regulations Relating to the Definition of an NZRU and First Class Fixture and the Order of Precedence	79





NEW ZEALAND RUGBY UNION

2009 Air New Zealand Cup • Key Dates

Date	
5 June	Transfer Period Closes – Player Movement Form needs to be filed with the NZRU for any player who is on the list of “captured” players and wants to change Provinces
	Cut-Off Date – final day for non-captured players to move Provinces or be cleared into New Zealand from overseas and still be considered as a “local player”
20 July	Naming of Air New Zealand Cup Squad – final day for Air New Zealand Cup Unions to notify the NZRU of their squads of at least 26 players
30 July	Air New Zealand Cup Commences
6 September	Overseas or Returning New Zealand Players – must have been named in a Playing 22 by end of Week Six
6 September	Loan Players – Loan Arrangement Form must be filed with the NZRU by this date
7 November	Air New Zealand Cup Final

2009 Heartland Championship • Key Dates

Date	
5 June	Cut-Off Date – final day for players to move Provinces or be cleared into New Zealand from overseas and still be considered as a “local player”
29 August	AA Rewards Heartland Championship Commences
26 September	End of Round One – Players of Origin, Loan, Overseas and Returning New Zealand players must have been named in a Playing 22
31 October	Heartland Championship Finals





NEW ZEALAND RUGBY UNION
Competition Regulations Handbook • 2009
Player Eligibility



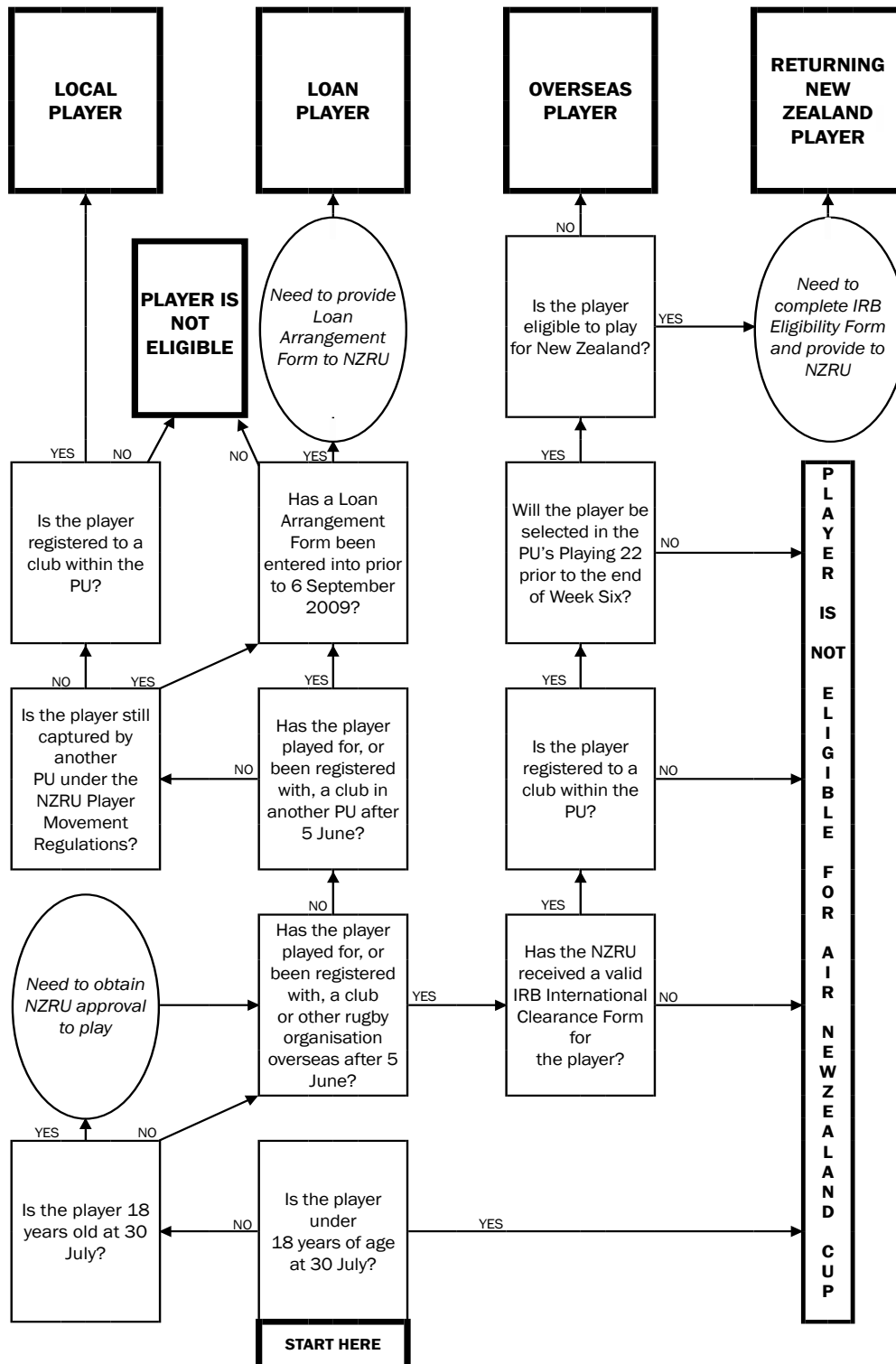


NEW ZEALAND RUGBY UNION

Player Eligibility Flowchart

2009 Air New Zealand Cup

Note: This flowchart is provided to aid Provincial Unions in familiarising themselves with the process of the Player Eligibility Regulations and is by no means intended as a substitute for the Provincial Unions reading the full text of the Player Eligibility Regulations.

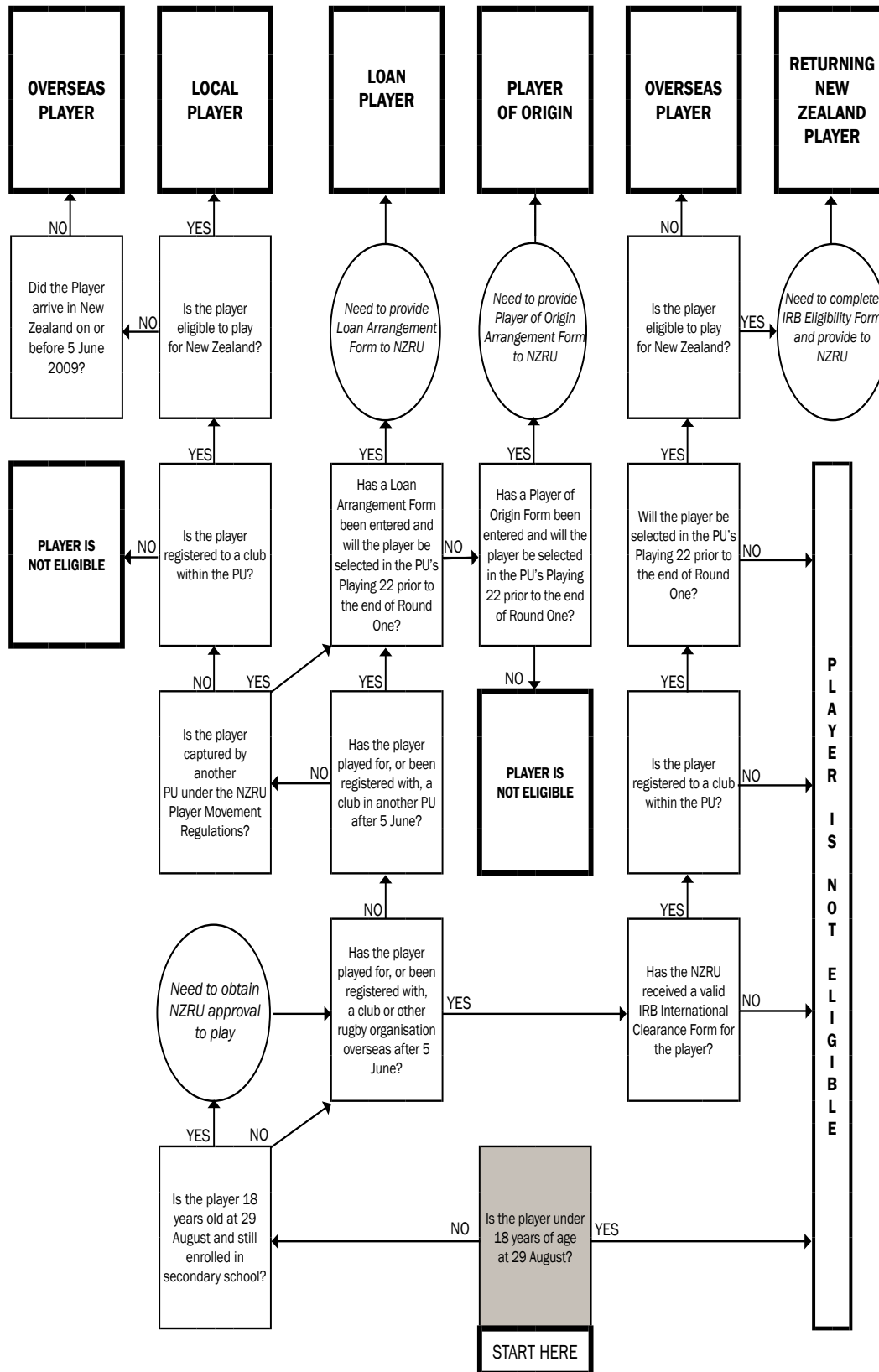


NEW ZEALAND RUGBY UNION

Player Eligibility Flowchart

2009 Heartland Championship

Note: See note on preceding page.



NEW ZEALAND RUGBY UNION

Process for Confirming Players' Eligibility

It is the Provincial Union's responsibility to ensure that a player is eligible to play in the Air New Zealand Cup and Heartland Championship under the NZRU Player Eligibility Regulations.

The process for confirming the eligibility of a player requires that the Provincial Union perform the following three simple steps in relation to each and every player it may select for the competition:

Check to Perform

Confirm that the player is registered to a club within the Provincial Union in 2009.

Confirm that the player has not obtained an International Clearance out of New Zealand and then failed to get clearance back into New Zealand.

or

If the player recently came into New Zealand from overseas, that he has obtained an International Clearance.

Confirm that the player is not captured by another Air New Zealand Cup or Heartland Championship Provincial Union.

It is strongly recommended that someone within each Provincial Union performs these checks for every player in the extended squad in advance of the 2009 Air New Zealand Cup or Heartland Championship to ensure players are eligible BEFORE they take the field.



NEW ZEALAND RUGBY UNION
Player Eligibility •
IRB International Eligibility Form
(opposite)



REGULATION 8, SCHEDULE 1

ELIGIBILITY FORM

DECLARATION OF ELIGIBILITY OF A PLAYER TO PLAY FOR THE SENIOR FIFTEEN-A-SIDE NATIONAL REPRESENTATIVE TEAM, THE NEXT SENIOR FIFTEEN-A-SIDE NATIONAL REPRESENTATIVE TEAM OR THE SENIOR NATIONAL REPRESENTATIVE SEVENS TEAM OF A UNION

DECLARATION OF PLAYER

I _____ (Name) of _____ (Address) confirm that, I have read and understand the criteria for eligibility set out in Regulation 8 of the IRB Regulations Relating to the Game (IRB Regulations) and I hereby declare that I am eligible to play for _____ Union because:-

Tick applicable box(es)

- I was born in the country for which fifteen-a-side senior National Representative Team or the next senior fifteen-a-side National Representative Team, or the senior National Representative Sevens Team of the Union for which I intend to play; or
- One of my parents or grandparent was born in the country for which senior fifteen-a-side National Representative Team or the next senior fifteen-a-side National Representative Team or the senior National Representative Sevens Team of the Union for which I intend to play; or
- I have completed thirty-six consecutive months of Residence immediately preceding the time of playing in the country for which senior fifteen-a-side National Representative Team or the next senior fifteen-a-side National Representative Team or the senior National Representative Sevens Team of the Union for which I intend to play.

AND

- I have not played for the senior fifteen-a-side National Representative Team or the next senior fifteen-a-side National Representative Team or the senior National Representative Sevens Team of any other Union.¹

¹ *If a Player has played for another Union's senior fifteen-a-side National Representative Team or next senior fifteen-a-side National Representative Team or senior National Representative Sevens team, this must be stated on this declaration form. For the avoidance of doubt, Players would only be eligible to play for a second Union if they can demonstrate that they allowed 36 consecutive months to elapse before they played for a second Union and that they played for that second Union before 1 January 2000. Any such Players should submit in writing the circumstances of such participation on a separate sheet.*

I have attached to this declaration relevant documentation to prove my eligibility to play for the senior fifteen-a-side National Representative Team or the next senior fifteen-a-side National Representative Team or the senior National Representative Sevens Team of _____ Union and I understand and accept that if I am found to have played for the senior fifteen-a-side National Representative Team or next senior fifteen-a-side National Representative Team or the senior National Representative Sevens Team of a Union without satisfying the eligibility criteria set out in Regulation 8 of the IRB Regulations, and/or to have provided inaccurate information in this declaration then I and the Union concerned will be subject to sanctions.

Player's signature: _____ Date: _____

DECLARATION OF UNION

I _____ (Name) the _____ of _____ (Position and Union) hereby declare that the _____ Union has made all such necessary enquiries in relation to the above Player's eligibility to play for the senior fifteen-a-side National Representative Team or the next senior fifteen-a-side National Representative Team or the senior Sevens National Representative Team of the Union. I further declare that the Union is satisfied that the information provided by the Player in his declaration is correct, that the documentation in support of the Player's declaration is valid and that the Player is eligible to play for the senior fifteen-a-side National Representative Team or the next senior fifteen-a-side National Representative Team or the senior National Representative Sevens Team of _____ Union. I understand and accept that if a Player plays for the senior fifteen-a-side National Representative Team or the next senior fifteen-a-side National Representative Team Union or the senior National Representative Sevens Team without satisfying the eligibility criteria set out in Regulation 8 of the IRB Regulations and/or the Union has provided inaccurate information in this declaration then the Union will be subject to the fixed penalty sanctions set out in Regulation 8.

Signed: _____ Date: _____

NEW ZEALAND RUGBY UNION Player Eligibility Regulations

Contents

Part 1 • Definitions	14
1 Definitions	14
Part 2 • Air New Zealand Cup	16
2 Introduction	16
3 Local Players.....	16
4 Loan Players	16
5 Returning New Zealand Players	17
6 Overseas Players	18
Part 3 • Heartland Championship	19
7 Introduction	19
8 Local Players.....	19
9 Loan Players	19
10 Returning New Zealand Players	20
11 Overseas Players.....	21
12 Players of Origin.....	21
Part 4 • General	22
13 Changes to Regulations.....	22
14 Breach of Regulations	22
Schedules	
Loan Arrangement Form	23
Player of Origin Agreement Form.....	24



Part 1 • Definitions

1 DEFINITIONS

In these Regulations, unless the context requires or indicates otherwise, the following definitions shall apply:

“Air New Zealand Cup” means the Air New Zealand Cup competition as provided for under the *NZRU Domestic Competition Regulations*. Any reference to “Air New Zealand Cup” has the same meaning as “Premier Competition” in the Collective Agreement;

“Air New Zealand Cup Union” means a Provincial Union competing in the Air New Zealand Cup;

“Borrowing Provincial Union” means the Provincial Union to which a Player is loaned pursuant to a Loan Arrangement;

“Collective Agreement” means the Collective Agreement entered into by the NZRU and the RPC which comes into effect from 1 January 2006;

“Contract Year” means the calendar year (commencing on 1 January and concluding on 31 December) and may be defined with reference to a particular year (eg Contract Year 2006);

“Current Provincial Union” means the Provincial Union from which a player is made available under a Player of Origin Agreement;

“Employment Services” means Playing Services, Promotional Services and Media Interviews and associated travel as those terms are defined in the Collective Agreement;

“Heartland Championship” means the Heartland Championship competition as provided for under the *NZRU Domestic Competition Regulations*. Any reference to the “Heartland Championship” has the same meaning as “Division One” in the Collective Agreement;

“Heartland Championship Union” means a Provincial Union competing in the Heartland Championship;

“Lending Provincial Union” means the Provincial Union from which a Player is loaned pursuant to a Loan Arrangement;

“Local Player” has the meaning set out in clauses 3 and 8;

“Loan Arrangement” means the form set out in Schedule 1;

“Loan Player” has the meaning set out in clauses 4 and 9;

“National Union” has the meaning given to it in the IRB Regulations;

“NZRU” means the New Zealand Rugby Union Incorporated;

“Original Provincial Union” means the Provincial Union to which a Player is made available under a Player of Origin Agreement;

“Overseas Player” has the meaning set out in clauses 6 and 11;

“Played” means to have taken the field in a rugby union match;

“Player” means a rugby union player;

“Player of Origin” has the meaning set out in clause 12;

“Player of Origin Agreement” has the meaning set out in Schedule 2;

“Playing 22” means the fifteen selected players plus seven reserves as recorded on the team sheet provided to the NZRU for any Air New Zealand Cup or Heartland Championship match;

“Provincial Union” means an Affiliated Union as defined in the NZRU Constitution;

“Provincial Union Contract” means the contract set out in Appendix 9 of the Collective Agreement;

“Provincial Union Development Contract” means the contract set out in Appendix 10 of the Collective Agreement;



“Provincial Union Term” has the meaning set out in clause 46.4 of the Collective Agreement;

“Provincial Union Development Term” has the meaning set out in clause 47.3 of the Collective Agreement;

“Ranfurly Shield” means the Ranfurly Shield as provided for under the *NZRU Ranfurly Shield Regulations*;

“Registered” means a player who has completed the NZRU Senior Player Registration Form for that Contract Year;

“Returning New Zealand Player” has the meaning set out in clauses 5 or 10;

“RPC” means the Rugby Players Collective Inc;

“Super Rugby Competition” has the meaning set out in clause 38.1 of the Collective Agreement;



Part 2 • Air New Zealand Cup

2 INTRODUCTION

- 2.1 This Part governs which Players can play in the Air New Zealand Cup or for an Air New Zealand Cup Union in the Ranfurly Shield.
- 2.2 The Playing 22 of any Air New Zealand Cup Union for the Air New Zealand Cup and the Ranfurly Shield shall consist only of Players who are:
- (a) Local Players in accordance with clause 3;
 - (b) Loan Players in accordance with clause 4;
 - (c) Returning New Zealand Players in accordance with clause 5;
 - (d) Overseas Players in accordance with clause 6
- provided that the combined number of Loan Players and Overseas Players does not exceed six.
- 2.3 A Player must become a party to a Provincial Union Contract or a Provincial Union Development Contract, in order to participate in the Air New Zealand Cup.
- 2.4 In accordance with IRB Guidelines, a Player must be at least 18 years of age as at the day of the first match in the Air New Zealand Cup in order to participate in the Air New Zealand Cup. Further, any Provincial Union wishing to select a Player who is 18 years of age as at the day of the first match in the Air New Zealand Cup as part of the Playing 22 for an Air New Zealand Cup match must obtain prior written approval from the NZRU. NZRU High Performance will issue protocols on an annual basis that it will then assess the Player against in consultation with the Provincial Union and the Player. The purpose of this assessment is to determine whether it is in the best welfare and development interests of the Player to play as an 18 year old in the Air New Zealand Cup.

3 LOCAL PLAYERS

- 3.1 **“Local Player”** means a Player who:
- (a) is Registered with a club competing in a competition conducted under the control and jurisdiction of that Provincial Union; and
 - (b) has not been Registered with, or Played for, a club or other rugby organisation affiliated to another Provincial Union or National Union after the Friday following the Super Rugby Competition Final of the current Contract Year (for the avoidance of doubt this will not include a Player playing only for a national representative team or touring team); and
 - (c) is not captured by another Provincial Union pursuant to the *NZRU Player Movement Regulations*.
- 3.2 A Player Registered with a club competing in a club competition under the joint control and jurisdiction of two or more Provincial Unions shall be a Local Player for the Provincial Union within whose Provincial Union boundaries the club the Player is Registered with is located.

4 LOAN PLAYERS

- 4.1 **“Loan Player”** means a Player who:
- (a) is Registered on the Friday following the Super Rugby Competition Final of the current Contract Year with a club competing in a competition conducted outside the control and jurisdiction of that Provincial Union; or
 - (b) has Played for a club or other rugby organisation affiliated to another Provincial Union after the date set out in (a) above; or
 - (c) is captured by another Provincial Union pursuant to the *NZRU Player Movement Regulations*;

provided that Player is party to a Loan Arrangement as follows:



- (d) The terms of the Loan Arrangement for that Loan Player are recorded in writing in the form set out in Schedule 1 and are not inconsistent with the Collective Agreement; including:
- (i) the Loan Arrangement must be for a specified term, which may not exceed the Player's Provincial Union Term or Provincial Union Development Term (as the case may be);
 - (ii) the Loan Arrangement details any circumstances under which the Loan may be terminated;
 - (iii) the Loan Arrangement may not place any constraint upon the way a Player provides Employment Services to the Borrowing Provincial Union (for example, by requiring the Player not to play against the Lending Provincial Union).
- (e) the Loan Arrangement is signed by the Lending Provincial Union, the Borrowing Provincial Union and the Loan Player and is provided to the NZRU prior to the Loan Player being included in the Playing 22 for the Borrowing Provincial Union; and
- (f) the Loan Arrangement is entered into before the conclusion of Week Six of the Modified Round Robin of the current Air New Zealand Cup.
- 4.2 There is no limit upon the number of Players which a Provincial Union may lend or borrow but the Playing 22 of any Air New Zealand Cup Union may not include more than six Loan Players, provided that the combined number of Overseas Players and Loan Players does not exceed six.
- 4.3 A Player who is not a party to a Provincial Union Contract or Provincial Union Development Contract may enter into a Provincial Union Contract or Provincial Union Development Contract at any time. For the avoidance of doubt, a Lending Provincial Union must agree to a loan where that Player is not subject to a Provincial Union Contract or Provincial Union Development Contract with that Lending Provincial Union.
- 4.4 A Loan Player can only play for the Lending Provincial Union after the loan start date if:
- (a) another Lending Provincial Union Player in a similar position is injured; and
 - (b) the Loan Player agrees (whether agreed in the terms of the Loan Arrangement or at the time the other Player is injured);
- in which case the Loan Player must be named in the next Playing 22 for the Lending Provincial Union; or
- (c) the Loan end date as specified on the Loan Arrangement has passed.
- 4.5 Under no circumstances can a Loan Player be selected in the Playing 22 for both the Lending and Borrowing Provincial Unions in the same round of the Air New Zealand Cup. Further, a Player can only be loaned to one Borrowing Provincial Union during the Air New Zealand Cup.

5 RETURNING NEW ZEALAND PLAYERS

5.1 "Returning New Zealand Player" means a Player who:

- (a) is eligible to play international rugby for New Zealand; and
- (b) has been Registered with, or Played for, a club or other rugby organisation affiliated to another National Union after the Friday following the Super Rugby Competition Final of the current Contract Year (for the avoidance of doubt this will not include a Player playing only for a national representative team or touring team); and
- (c) is not captured by another Provincial Union pursuant to the *NZRU Player Movement Regulations*;

provided that:

- (d) the Returning New Zealand Player has completed an IRB Clearance from the other National Union to the NZRU in compliance with *IRB Regulation 4 – Player Status, Player Contracts and Player Movement* and is Registered with a club competing in a club competition conducted under the control and jurisdiction of that Provincial Union before that Player becomes a member of a Playing 22;



- (e) the Returning New Zealand Player becomes a member of a Playing 22 of the Provincial Union (or a member of a Playing 22 of a Heartland Championship Union) before the conclusion of Week Six of the Round Robin of the current Air New Zealand Cup; and
- (f) the Provincial Union has proven to the satisfaction of the NZRU that the Returning New Zealand Player is eligible to play international rugby for New Zealand pursuant to *IRB Regulation 8 – Eligibility to Play for National Representative Teams* as at the start of the current Air New Zealand Cup and the NZRU has confirmed this in writing before that Player becomes a member of a Playing 22.

6 OVERSEAS PLAYERS

6.1 “Overseas Player” means a Player who:

- (a) has been Registered with, or Played for, a club or other rugby organisation affiliated to another National Union after the Friday following the Super Rugby Competition Final of the current Contract Year (for the avoidance of doubt this will not include a Player playing only for a national representative team or touring team); and
- (b) is not captured by another Provincial Union pursuant to the *NZRU Player Movement Regulations*;

provided that:

- (c) the Overseas Player has completed an IRB Clearance from the other National Union to the NZRU in compliance with *IRB Regulation 4 – Player Status, Player Contracts and Player Movement* and is Registered with a club competing in a club competition conducted under the control and jurisdiction of that Provincial Union before that Player becomes a member of a Playing 22; and
- (d) the Overseas Player becomes a member of the Playing 22 of the Provincial Union before the conclusion of Week Six of the Round Robin of the current Air New Zealand Cup.

6.2 The Playing 22 of any Air New Zealand Cup Union must not include more than two Overseas Players, provided that the combined number of Overseas Players and Loan Players does not exceed six.



Part 3 • Heartland Championship

7 INTRODUCTION

- 7.1 This Part governs which Players can play in the Heartland Championship or for a Heartland Championship Union in the Ranfurly Shield.
- 7.2 The Playing 22 of any Heartland Championship Union for the Heartland Championship and the Ranfurly Shield shall consist only of Players who are:
- (a) Local Players in accordance with clause 8;
 - (b) Loan Players in accordance with clause 9;
 - (c) Returning New Zealand Players in accordance with clause 10;
 - (d) Overseas Players in accordance with clause 11;
 - (e) Players of Origin in accordance with clause 12.
- 7.3 In accordance with IRB Guidelines a Player must be at least 18 years of age as at the date of the first match of the Heartland Championship in order to participate in the Heartland Championship. Further, any Provincial Union wishing to select a Player who is 18 years of age and remains eligible for the New Zealand Secondary Schools rugby team as at the day of the first match in the Heartland Championship as part of the Playing 22 for a Heartland Championship match must obtain prior written approval from the NZRU. NZRU High Performance will assess the Players overall workload, taking into account all school, provincial and national representative rugby commitments the Player has performed during the year, in consultation with the Provincial Union and the Player. The purpose of this assessment is to determine whether it is in the best welfare and development interests of the Player to play as an 18 year old in the Heartland Championship.

8 LOCAL PLAYERS

8.1 “Local Player” means a Player who:

- (a) is Registered with a club competing in a competition conducted under the control and jurisdiction of that Provincial Union; and
- (b) has not been Registered with, or Played for, a club or other rugby organisation affiliated to another Provincial Union or National Union after the Friday following the Super Rugby Competition Final of the current Contract Year (for the avoidance of doubt this will not include a Player playing only for a national representative team or touring team);
- (c) is not captured by another Provincial Union pursuant to the NZRU Player Movement Regulations; and
- (d) if not eligible to play international rugby for New Zealand, arrived in New Zealand on or before 5 June 2009 and has resided in New Zealand since arrival.

- 8.2 A Player Registered with a club competing in a club competition under the joint control and jurisdiction of two or more Provincial Unions shall be a Local Player for the Provincial Union within whose Provincial Union boundaries the club the Player is Registered with is located.

9 LOAN PLAYERS

9.1 “Loan Player” means a Player who:

- (a) is Registered on the Friday following the Super Rugby Competition Final of the current Contract Year with a club competing in a competition conducted outside the control and jurisdiction of that Provincial Union; or
- (b) has Played for a club or other rugby organisation affiliated to another Provincial Union after the date set out in (a) above; or
- (c) is captured by another Provincial Union pursuant to the *NZRU Player Movement Regulations*;

provided that Player is party to a Loan Arrangement as follows:



- (d) the terms of the Loan Arrangement for that Loan Player are recorded in writing in the form set out in Schedule 1;
- (e) the Loan Arrangement is signed by the Lending Provincial Union, the Borrowing Provincial Union and the Loan Player and is provided to the NZRU prior to the Loan Player being included in the Playing 22 for the Borrowing Provincial Union; and
- (f) the Loan Player becomes a member of a Playing 22 for the Borrowing Provincial Union before the conclusion of Round One of the current Heartland Championship.

9.2 There is no limit upon the number of Players which a Provincial Union may lend or borrow but the Playing 22 of any Heartland Championship Union may not include more than three Loan Players and one Player of Origin, and the combined number of Overseas Players and Loan Players must not exceed three.

9.3 A Loan Player can only play for the Lending Provincial Union after having played for the Borrowing Provincial Union if:

- (a) another Lending Provincial Union Player in a similar position is injured; and
- (b) the Loan Player agrees (whether agreed in the terms of the Loan Arrangement or at the time the other Player is injured);

in which case the Loan Player must be selected in the next Playing 22 for the Lending Provincial Union.

10 RETURNING NEW ZEALAND PLAYERS

10.1 **“Returning New Zealand Player”** means a Player who:

- (a) is eligible to play international rugby for New Zealand; and
- (b) has been Registered with, or Played for, a club or other rugby organisation affiliated to another National Union after the Friday following the Super Rugby Competition Final of the current Contract Year (for the avoidance of doubt this will not include a Player playing only for a national representative team or touring team); and
- (c) is not captured by another Provincial Union pursuant to the *NZRU Player Movement Regulations*;

provided that:

- (d) the Returning New Zealand Player has completed an IRB Clearance from the other National Union to the NZRU in compliance with *IRB Regulation 4 – Player Status, Player Contracts and Player Movement* and is Registered with a club competing in a club competition conducted under the control and jurisdiction of that Provincial Union before that Player becomes a member of a Playing 22;
- (e) the Returning New Zealand Player becomes a member of a Playing 22 of the Provincial Union before the conclusion of Round One (as set out in Appendix 2 of the Domestic Competition Regulations) of the current Heartland Championship; and
- (f) the Provincial Union has proven to the satisfaction of the NZRU that the Returning New Zealand Player is eligible to play international rugby for New Zealand pursuant to *IRB Regulation 8 – Eligibility to Play for National Representative Teams* as at the start of the current Heartland Championship Competition and the NZRU has confirmed this in writing before that Player becomes a member of a Playing 22.



11 OVERSEAS PLAYERS

11.1 “Overseas Player” means a Player who:

- (a) is eligible to play international rugby for New Zealand and
 - (i) has been Registered with, or Played for, a club or other rugby organisation affiliated to another National Union after the Friday following the Super Rugby Competition Final of the current Contract Year (for the avoidance of doubt this will not include a Player playing only for a national representative team or touring team); and
 - (ii) is not captured by another Provincial Union pursuant to the *NZRU Player Movement Regulations*; or
- (b) is not eligible to play international rugby for New Zealand and arrived in New Zealand after 5 June 2009.

provided that:

- (c) the Overseas Player has completed an IRB Clearance from the other National Union to the NZRU in compliance with *IRB Regulation 4 – Player Status, Player Contracts and Player Movement* and is Registered with a club competing in a club competition conducted under the control and jurisdiction of that Provincial Union before that Player becomes a member of a Playing 22; and
- (d) the Overseas Player becomes a member of the Playing 22 of the Provincial Union before the conclusion of Round One of the current Heartland Championship.

11.2 The Playing 22 of any Heartland Championship Union must not include more than one Overseas Player, and the combined number of Overseas Players and Loan Players must not exceed three.

12 PLAYER OF ORIGIN

12.1 “Player of Origin” means a Player who:

- (a) is Registered on the Friday following the Super Rugby Competition Final of the current Contract Year with a club competing in a competition conducted outside the control and jurisdiction of that Provincial Union; or
- (b) has Played for a club or other rugby organisation affiliated to another Provincial Union after the date set out in (a) above; or
- (c) is captured by another Provincial Union pursuant to the *NZRU Player Movement Regulations*; and
- (d) during at least three years in which the player was aged 12-18 years (inclusive), played rugby for either a club or school based in that Provincial Union

provided that Player is party to a Player of Origin Agreement as follows:

- (e) the Agreement is signed by the Original Provincial Union, the Current Provincial Union and the Player of Origin and is provided to the NZRU prior to the Player of Origin being named in the Playing 22 for the Original Provincial Union; and
- (g) the Player of Origin is named in a Playing 22 of the Original Provincial Union before the conclusion of Round One (as set out in Appendix 2 of the Domestic Competition Regulations) of the current Heartland Championship.

provided that a Playing 22 may contain only one Player of Origin.



12.2 A Player of Origin can only play for the Current Provincial Union after having played for the Original Provincial Union in the same season if:

- (a) another Current Provincial Union Player in a similar position is injured; and
- (b) the Player of Origin agrees (whether agreed in the terms of the Player of Origin Arrangement or at the time the other Player is injured);

in which case the Player of Origin must be named in the next Playing 22 for the Current Provincial Union.

Part 4 • General

13 CHANGES TO REGULATIONS

13.1 These Regulations have been developed pursuant to the Collective Agreement.

13.2 In the event the NZRU wishes to make amendments to these Regulations it must comply with the following process:

- (a) in the first instance, the NZRU must meet with the RPC and attempt to obtain its agreement to any amendment;
- (b) if the RPC withholds agreement, the NZRU may proceed to make the amendment (provided that, in that event the RPC may seek to rely upon the problem resolution provisions of the Collective Agreement).

14 BREACH OF REGULATIONS

14.1 Any breach of these Regulations by a Provincial Union will be dealt with by the NZRU in accordance with clause 14 of the *NZRU Domestic Competition Regulations*.

14.2 Prior to reaching a conclusion that there has been a breach of these Regulations, the NZRU will notify the RPC of the nature of the alleged breach and provide the RPC with access to any information and an opportunity to have input into the investigation of any alleged breach, including any submissions RPC wish to make about penalty.

LOAN ARRANGEMENT

Parties

Player Name:

Lending Provincial Union:

Borrowing Provincial Union:

Loan Period

Loan Start Date:

Loan Expiry Date:

Terms of Loan

I DO/DO NOT (*circle one*) wish to return to my Lending Provincial Union in the event of an injury to another Lending Provincial Union Player in a similar position.

Other Terms: (*please list any additional terms here, use the reverse if necessary*)

Consents and Confirmations

.....
(*Signature of Player*) (Date)

Name of Lending Provincial Union:
.....
(*Signature of Authorised Person from the Lending Provincial Union*)

Name: Position: Date:

Name of Borrowing Provincial Union:
.....
(*Signature of Authorised Person from the Borrowing Provincial Union*)

Name: Position: Date:

PLAYER OF ORIGIN AGREEMENT

Parties

Player Name:

Current Provincial Union:

Original Provincial Union:

Period

Start Date:

Expiry Date:

Terms

I DO/DO NOT (*circle one*) wish to return to my Current Provincial Union in the event of an injury to another Current Provincial Union Player in a similar position.

Other Terms: (*please list any additional terms here, use the reverse if necessary*)

Consents and Confirmations

.....
(Signature of Player) (Date)

Name of Current Provincial Union:

.....
(Signature of Authorised Person from the Current Provincial Union)

Name: Position: Date:

Name of Original Provincial Union:

.....
(Signature of Authorised Person from the Original Provincial Union)

Name: Position: Date:



NEW ZEALAND RUGBY UNION
Competition Regulations Handbook • 2009
Player Movement



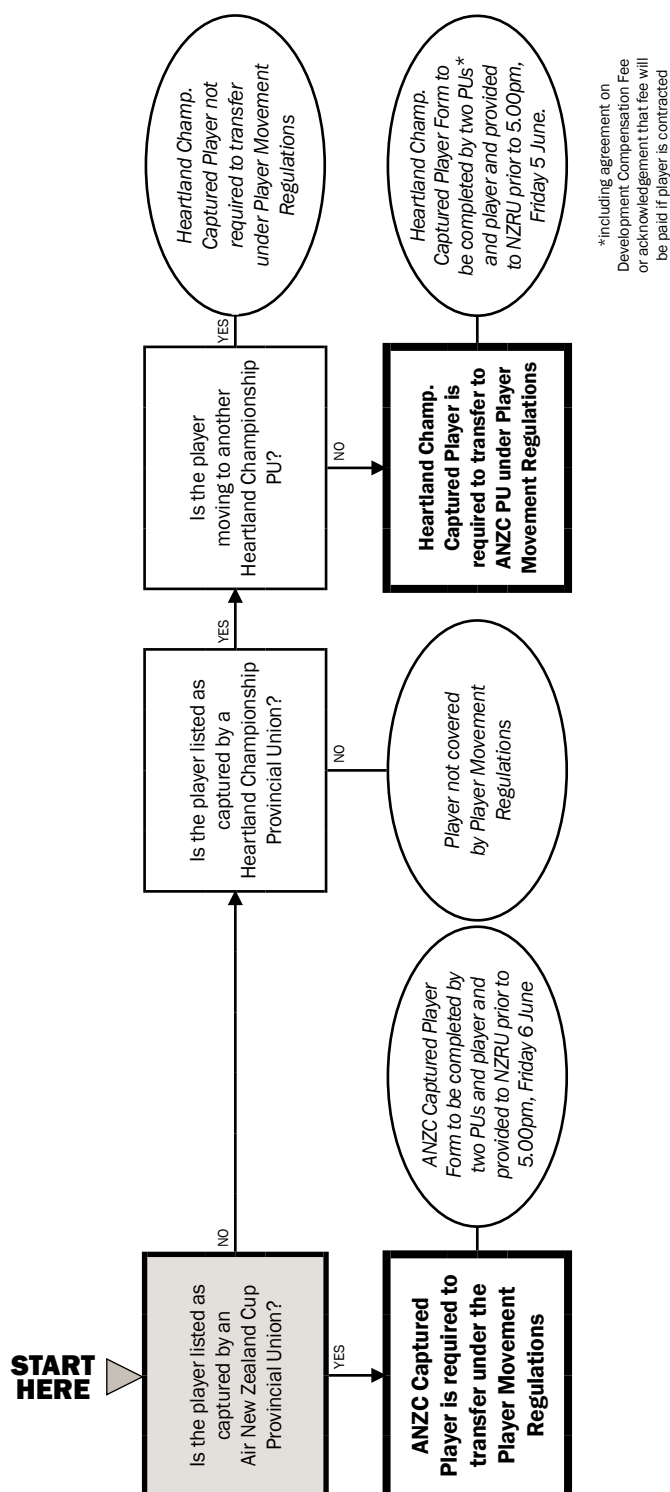


NEW ZEALAND RUGBY UNION

Player Movement Flowchart

Air New Zealand Cup & Heartland Championship

Note: This flowchart is provided to aid Provincial Unions in familiarising themselves with the process of the Player Movement Regulations and is by no means intended as a substitute for the Provincial Unions reading the full text of the Player Movement Regulations.



NEW ZEALAND RUGBY UNION

2008/2009 Captured Players

The following is a list of all 2008/2009 Captured Players in alphabetical order by surname. This list includes both Air New Zealand Cup Captured Players and Heartland Championship Captured Players. **The list provides the players status for 2008.** It does not give any information about their contractual status for 2009.

The Transfer Period will remain open until 5 June 2009.

Any player on this list must transfer in accordance with the *Player Movement Regulations* if he wishes to be available to play for a Provincial Union different to the one listed in the 2009 Air New Zealand Cup or 2009 Heartland Championship. The only exception to this is that a Heartland Championship Captured Player wishing to play for another Heartland Championship Provincial Union is not required to transfer; he can merely register in the new Province in 2009 and play his club rugby there.

To understand the process for transferring players please refer to the NZRU Player Movement Regulations.

It is important to note that even though there is no longer any transfer fees for players moving between Air New Zealand Cup Provincial Unions (transfer fees **do** apply where players are moving from a Rewards Heartland Championship Provincial Union to an Air New Zealand Cup Provincial Union) or any restriction on the number of players that can transfer to a Provincial Union there is still a requirement to transfer in accordance with the Player Movement Regulations. If a Provincial Union does not transfer a player on this list the only way he will be able to play for it in the 2009 Air New Zealand Cup or Heartland Championship is as a Loan Player.

Note that the New Zealand U-20 team has now been added to the list.

For completeness, as outlined in clause 5.1 of the Player Movement Regulations an Air New Zealand Cup Captured Player is a player who is:

- (a) party to a Provincial Union Contract or a Provincial Union Development Contract at any time during the Transfer Period; or
- (b) enrolled in one of the 14 Regional Rugby Academies and Registered with a club affiliated to an Air New Zealand Cup Union during the Contract Year in which the Transfer Period commences; or
- (c) Registered with a club affiliated to an Air New Zealand Cup Union and is either:
 - (i) named in any New Zealand Under 20 representative squad announced during the Contract Year in which the Transfer Period commences; or
 - (ii) named in any New Zealand Under 20 representative squad announced during the Transfer Period.

As outlined in clause 6.1 of the Player Movement Regulations a Heartland Championship Captured Player is a player who is:

- (a) Registered with a club affiliated to a Heartland Championship Union and is selected in the Playing 22 of that Heartland Championship Union on one or more occasions during the Heartland Championship taking place at the time the Transfer Period commences; or
- (b) Registered with a club affiliated to a Heartland Championship Union and is either:
 - (i) named in any New Zealand Under 20 representative squad announced during the Contract Year in which the Transfer Period commences; or
 - (ii) named in any New Zealand Under 20 representative squad announced during the Transfer Period; or
- (c) Registered with a club affiliated to a Heartland Championship Union and is either:
 - (i) named in the New Zealand Secondary Schools representative squad announced during the Contract Year in which the Transfer Period commences; or
 - (ii) named in any New Zealand Secondary Schools representative squad announced during the Transfer Period.



Air New Zealand Cup Provincial Unions should take particular note of clause 5.3 of the Player Movement Regulations which provides that a player who is not a party to a Provincial Union or Provincial Union Development Contract may enter into one at anytime. This means that the only way a Provincial Union can say no to a player transferring out is if the player is party to a PU or PU Development Contract for 2009.

CAPTURED PLAYERS

Abercrombie	Hayden	North Harbour	PU or PU Development Contract
Adams	Simon	Thames Valley	Heartland Championship
Adams	Kane	Waikato	NZ Secondary Schools
Afeaki	Ben	North Harbour	PU or PU Development Contract
Afoa	John	Auckland	PU or PU Development Contract
Afoa	James	North Harbour	PU or PU Development Contract
Afuvai	Willie	Manawatu	NZ Secondary Schools
Ah You	Rodney	Canterbury	PU or PU Development Contract
Aho	Sione	North Otago	Heartland Championship
Ainley	Alex	Tasman	PU or PU Development Contract
Aldworth	Dan	Hawkes Bay	PU or PU Development Contract
Aldworth	Jeremy	Otago	PU or PU Development Contract
Alfeld	Steve	Canterbury	PU or PU Development Contract
Allen	Ben	Hawkes Bay	PU or PU Development Contract
Allen	Jody	Hawkes Bay	PU or PU Development Contract
Allen	Josh	Waikato	PU or PU Development Contract
Allen	Jeff	Wellington	PU or PU Development Contract
Allen	Juston	Hawke's Bay	Academy
Allison	Shaun	West Coast	Heartland Championship
Alo	Ray	North Harbour	PU or PU Development Contract
Anderson	Carl	Otago	PU or PU Development Contract
Anderson-Heather	Sam	Otago	PU or PU Development Contract
Anesi	Sosene	Waikato	PU or PU Development Contract
Anga'aelangi	Sione	Counties Manukau	PU or PU Development Contract
Annabell	James	Taranaki	PU or PU Development Contract
Annear	Nick	South Canterbury	NZ Secondary Schools
Aporo	Cory	Bay of Plenty	PU or PU Development Contract
Aquila	Wayne	Bay of Plenty	PU or PU Development Contract
Armstrong	Jono	Waikato	PU or PU Development Contract
Armstrong	Levi	Hawke's Bay	Academy
Arnold	Steve	Auckland	PU or PU Development Contract
Arnold	Toby	Bay of Plenty	PU or PU Development Contract
Asaeli	Paula	Bay of Plenty	PU or PU Development Contract
Ashworth	Tyler	Northland	PU or PU Development Contract
Atiga	Ben	Auckland	PU or PU Development Contract
Atkin	Glen	Buller	Heartland Championship
Atkins	Paddy Joe	Northland	Academy
Atonio	Uini	Counties Manukau	PU or PU Development Contract
Austin	Shayne	Taranaki	PU or PU Development Contract
Avei	Oli	Waikato	PU or PU Development Contract
Axtens	Carl	Bay of Plenty	NZ Secondary Schools
Bagshaw	Sean	Thames Valley	Heartland Championship
Bailey	Damian	Buller	Heartland Championship
Bailey	Jeremy	South Canterbury	Heartland Championship
Baker	Kurt	Manawatu	PU or PU Development Contract
Baker	Steven	Northland	PU or PU Development Contract



Baker	Matenga	Manawatu	Academy
Baker	Cyrus	Manawatu	NZ Secondary Schools
Baldwin	Cole	Wanganui	Heartland Championship
Bambry	Jared	Wairarapa Bush	Heartland Championship
Bancroft	Aaron	Otago	PU or PU Development Contract
Barnes	Malcolm	Waikato	PU or PU Development Contract
Barnett	Paul	East Coast	Heartland Championship
Barone	Adrian	Wellington	PU or PU Development Contract
Barrett	Nick	Southland	PU or PU Development Contract
Barrett	Kane	Taranaki	Academy
Bartlett	Nui	Hawkes Bay	PU or PU Development Contract
Barton	Sam	North Harbour	Academy
Bason	David	Waikato	PU or PU Development Contract
Bateman	Tim	Canterbury	PU or PU Development Contract
Bates	Dion	Southland	PU or PU Development Contract
Bativagone	Roko	Taranaki	Academy
Battson	Richard	Thames Valley	Heartland Championship
Baxter	Charles	Bay of Plenty	PU or PU Development Contract
Bekhuis	Josh	Southland	PU or PU Development Contract
Bell	Chris	Poverty Bay	Heartland Championship
Beneke	Eugene	Counties Manukau	PU or PU Development Contract
Bent	Michael	Taranaki	Academy
Berquist	Matt	Hawkes Bay	PU or PU Development Contract
Berry	Devon	Taranaki	Academy
Beveridge	Phil	Buller	Heartland Championship
Bickers	Tyler	North Harbour	Academy
Biddles	Sam	North Harbour	PU or PU Development Contract
Bird	Thomas	Southland	PU or PU Development Contract
Bird	Dominic	Hawke's Bay	Academy
Black	Kieran	Canterbury	Academy
Blackman	Kerehama	East Coast	Heartland Championship
Blain	Matt	Waikato	PU or PU Development Contract
Blakely	John	North Otago	Heartland Championship
Blincoe	Nick	North Harbour	PU or PU Development Contract
Blucher	Josh	North Harbour	PU or PU Development Contract
Bokser	Michael	East Coast	Heartland Championship
Bolotagane	Kele	Poverty Bay	Heartland Championship
Bonisch	Matthew	Buller	Heartland Championship
Booth	Louis	Manawatu	Academy
Boric	Anthony	North Harbour	PU or PU Development Contract
Borlase	Peter	Canterbury	PU or PU Development Contract
Bosch	Francisco	Manawatu	PU or PU Development Contract
Boswell-Wakefield	Trent	Hawkes Bay	PU or PU Development Contract
Botica	Ben	North Harbour	PU or PU Development Contract
Bourke	Colin	Bay of Plenty	PU or PU Development Contract
Bowden	Daniel	Otago	PU or PU Development Contract
Boys	Tim	Southland	PU or PU Development Contract
Bradey	Adam	Hawkes Bay	PU or PU Development Contract
Bradnock	Josh	Manawatu	PU or PU Development Contract
Braid	Daniel	Auckland	PU or PU Development Contract
Braid	Luke	Bay of Plenty	PU or PU Development Contract
Breen	Peter	Otago	Academy
Brett	Stephen	Canterbury	PU or PU Development Contract
Brewster	Gavin	Thames Valley	Heartland Championship
Bright	Mark	Tasman	PU or PU Development Contract



Broadhurst	James	Canterbury	PU or PU Development Contract
Broadhurst	Michael	Poverty Bay	Heartland Championship
Brown	James	Canterbury	PU or PU Development Contract
Brownlee	Luke	Buller	Heartland Championship
Bruce	Callum	Waikato	PU or PU Development Contract
Bruce	James	Wairarapa Bush	Heartland Championship
Bryant	Francis	Manawatu	PU or PU Development Contract
Bryson	Karl	Manawatu	Academy
Buchanan	Callum	Wairarapa Bush	Heartland Championship
Buckman	Richard	Hawkes Bay	PU or PU Development Contract
Budd	Dean	Auckland	PU or PU Development Contract
Buffet	Peter	Thames Valley	Heartland Championship
Bull	James	Manawatu	Academy
Burleigh	Phil	Canterbury	PU or PU Development Contract
Burman	Mark	Waikato	PU or PU Development Contract
Burns	Russell	Poverty Bay	Heartland Championship
Burridge	Brian	Wellington	Academy
Cairns	(Robert) Malcolm	Mid Canterbury	Heartland Championship
Cameron	Keith	Otago	PU or PU Development Contract
Cameron	Jack	Taranaki	PU or PU Development Contract
Cameron	Matt	Waikato	PU or PU Development Contract
Cameron	Scott	Taranaki	Academy
Cameron	Brad	Otago	Academy
Campbell	Allan	Poverty Bay	Heartland Championship
Campbell	Michael	Thames Valley	Heartland Championship
Campbell	Bradley	Southland	Academy
Carmichael	Carl	Taranaki	PU or PU Development Contract
Carmichael	Corey	Wanganui	Heartland Championship
Carpenter	Derek	Northland	PU or PU Development Contract
Carr	James	Mid Canterbury	Heartland Championship
Carter	Daniel	Canterbury	PU or PU Development Contract
Castle	Ben	Bay of Plenty	PU or PU Development Contract
Cathcart	Adam	Waikato	Academy
Cave	Jeremy	Otago	Academy
Cavubati	Tevita	Taranaki	PU or PU Development Contract
Chamberlain	Thomas	North Harbour	PU or PU Development Contract
Chamberlin	Tony	King Country	Heartland Championship
Chan Boon	Kalem	Waikato	PU or PU Development Contract
Chase	Te Atawhai	Horowhenua-Kapiti	Heartland Championship
Chipman	Jamie	Counties Manukau	PU or PU Development Contract
Christie	Sam	Waikato	PU or PU Development Contract
Chubb	Bradley	Waikato	PU or PU Development Contract
Church	Jason	Waikato	PU or PU Development Contract
Clare	Craig	Otago	PU or PU Development Contract
Clark	Brendan	Counties Manukau	PU or PU Development Contract
Clarke	Aayden	Hawkes Bay	PU or PU Development Contract
Clarke	Craig	Taranaki	PU or PU Development Contract
Clarke	Sam	Thames Valley	Heartland Championship
Clarkson	Paul	Buller	Heartland Championship
Clarkson	Cyril	Thames Valley	Heartland Championship
Cleaver	Shane	Taranaki	PU or PU Development Contract
Climo	Frazier	Taranaki	Academy
Cochrane	Hamish	Tasman	2009 NZ Under 20
Cocker	John	Northland	PU or PU Development Contract
Coles	Dane	Wellington	PU or PU Development Contract



Coles	P	South Canterbury	Heartland Championship
Colhoun	Robert	North Harbour	PU or PU Development Contract
Collier	Josh	North Otago	Heartland Championship
Collins	Justin	Northland	PU or PU Development Contract
Collins	Jerry	Wellington	PU or PU Development Contract
Coltman	Liam	Otago	Academy
Coman	Mike	Canterbury	Academy
Comb	Marc	North Otago	Heartland Championship
Connell	Brenton	Mid Canterbury	Heartland Championship
Cook	Callum	Counties Manukau	PU or PU Development Contract
Cook	Blair	Tasman	PU or PU Development Contract
Cooke	Aaron	Wairarapa Bush	Heartland Championship
Cooper	Moko	Horowhenua-Kapiti	Heartland Championship
Cooper	James	Otago	Academy
Copeland	Peter	Southland	PU or PU Development Contract
Corlett	Laurence	Taranaki	PU or PU Development Contract
Cornish	Josh	West Coast	Heartland Championship
Cornwall	Daniel	Poverty Bay	Heartland Championship
Coughlan	Tony	Northland	PU or PU Development Contract
Cowan	Quinton (Jimmy)	Southland	PU or PU Development Contract
Cowan	Scott	Southland	PU or PU Development Contract
Craft-Chemis	Whaimotu	Poverty Bay	Heartland Championship
Crichton	Daniel	Counties Manukau	PU or PU Development Contract
Crockett	Wyatt	Canterbury	PU or PU Development Contract
Crosswell	Mitchell	Manawatu	PU or PU Development Contract
Crosswell	Nick	Manawatu	PU or PU Development Contract
Crotty	Ryan	Canterbury	PU or PU Development Contract
Crouchley	Dave	West Coast	Heartland Championship
Crouchley	Campbell	West Coast	Heartland Championship
Crowley	Thomas	Otago	PU or PU Development Contract
Crowley	Cameron	Wanganui	Heartland Championship
Cruden	Aaron	Manawatu	PU or PU Development Contract
Crutchley	Will	Tasman	PU or PU Development Contract
Cuezzo	Bruno	Hawkes Bay	PU or PU Development Contract
Cummings	Dan	South Canterbury	Heartland Championship
Cummings-Toone	Marcel	Bay of Plenty	PU or PU Development Contract
Cummins	Dean	Counties Manukau	PU or PU Development Contract
Cunningham	Nathan	North Otago	Heartland Championship
Curtis	Todd	Taranaki	Academy
Dagg	Israel	Hawkes Bay	PU or PU Development Contract
Dalley	Matthew	Manawatu	Academy
Dampney	Jon	Mid Canterbury	Heartland Championship
Darling	Ralph	North Otago	Heartland Championship
David	Arden	Wellington	PU or PU Development Contract
Davidson	Scott	Manawatu	Academy
Davies	Justin	Northland	PU or PU Development Contract
Davis	Mike	Northland	PU or PU Development Contract
Davis	Te Ahu	Waikato	PU or PU Development Contract
Davison	Simms	Bay of Plenty	PU or PU Development Contract
Davy	Nik	West Coast	Heartland Championship
de Malmanche	Aled	Waikato	PU or PU Development Contract
Dehar	John	Thames Valley	Heartland Championship
Delamere	Tyrone	East Coast	Heartland Championship
Delany	Michael	Bay of Plenty	PU or PU Development Contract
Devereaux	Daniel	North Harbour	PU or PU Development Contract



Dewes	Aden	Northland	PU or PU Development Contract
Dickens	Edward	Counties Manukau	PU or PU Development Contract
Dickson	Glenn	Otago	PU or PU Development Contract
Dill-Russell	Tyler	Auckland	PU or PU Development Contract
Direen	Jonathan	Otago	PU or PU Development Contract
Direen	Jono	Canterbury	Academy
Dixon	Elliot	Canterbury	PU or PU Development Contract
Dixon	Ash	Hawkes Bay	PU or PU Development Contract
Doak	Chris	Thames Valley	Heartland Championship
Donald	Stephen	Waikato	PU or PU Development Contract
Donnelly	Tom	Otago	PU or PU Development Contract
Donovan	Marcus	Hawke's Bay	Academy
Doyle	Erin	Horowhenua-Kapiti	Heartland Championship
Drake	Ashley	Horowhenua-Kapiti	Heartland Championship
Draper	Luke	King Country	Heartland Championship
Duckworth	Toby	Poverty Bay	Heartland Championship
Duley	Dave	Counties Manukau	PU or PU Development Contract
Dunlea	Craig	Mid Canterbury	Heartland Championship
Dunster	Aarin	King Country	Heartland Championship
Durie	Sam	West Coast	Heartland Championship
Duseigneur	Shaun	Horowhenua-Kapiti	Heartland Championship
Dwyer	Daniel	Mid Canterbury	Heartland Championship
Eaton	Chris	Hawkes Bay	PU or PU Development Contract
Eaton	Jason	Taranaki	PU or PU Development Contract
Edwards	Josh	Wanganui	Heartland Championship
Edwin	Morgan	Horowhenua-Kapiti	Heartland Championship
Egan	Matthew	Hawkes Bay	PU or PU Development Contract
Elisala	Anthony	Auckland	PU or PU Development Contract
Elliot	Vance	Waikato	NZ Secondary Schools
Elliott	Hikawera	Hawkes Bay	PU or PU Development Contract
Ellis	Andrew	Canterbury	PU or PU Development Contract
Ellison	Jacob	Wellington	PU or PU Development Contract
Ellison	Tamati	Wellington	PU or PU Development Contract
Ellison	Leon	Wellington	Academy
Elrick	Jon	North Harbour	PU or PU Development Contract
Endo	Kosuke	Canterbury	PU or PU Development Contract
Eru	Shahn	Wellington	2009 NZ Under 20
Evans	Bryn	Hawkes Bay	PU or PU Development Contract
Evans	Rhys	Hawkes Bay	PU or PU Development Contract
Eyre	Cameron	Canterbury	PU or PU Development Contract
Fa'aeteete	Leo	Auckland	PU or PU Development Contract
Fa'amau	Issac	Wellington	Academy
Fa'anunu	Paea	Auckland	PU or PU Development Contract
Fa'aoso	Lisiate	Manawatu	PU or PU Development Contract
Fa'aselele	Piula	Counties Manukau	PU or PU Development Contract
Faioso	Uaoalii (Kojak)	Counties Manukau	PU or PU Development Contract
Fairbrother	Tim	Wellington	PU or PU Development Contract
Fakafanua	Feetu	Northland	PU or PU Development Contract
Falamoe-Tuigamala	Galuefa	North Harbour	PU or PU Development Contract
Faleafa	Daniel	Auckland	PU or PU Development Contract
Fangupo	Kilifi	Hawkes Bay	PU or PU Development Contract
Farmer	Michael	North Harbour	PU or PU Development Contract
Farrell	Kevin	Counties Manukau	PU or PU Development Contract
Farrington	Jordan	Wanganui	Heartland Championship
Fatafeehe	Alipate	North Otago	Heartland Championship



Fatai	Ofa	North Otago	Heartland Championship
Fatai	Tony	South Canterbury	Heartland Championship
Faumuina	Charlie	Auckland	PU or PU Development Contract
Feast	Joe	Wairarapa Bush	Heartland Championship
Feaunati	Kona	Horowhenua-Kapiti	Heartland Championship
Ferguson	James	West Coast	Heartland Championship
Feutz	Jason	Mid Canterbury	Heartland Championship
Fia	Ma'afu	Manawatu	Academy
Fife	Kent	Waikato	PU or PU Development Contract
Fifita	Siaola	Mid Canterbury	Heartland Championship
Fihaki	Viliani	Counties Manukau	PU or PU Development Contract
Fili	Faatonu	Wellington	PU or PU Development Contract
Filipo	Ross	Wellington	PU or PU Development Contract
Finau	Vise	Horowhenua-Kapiti	Heartland Championship
Fisilau	Samisoni	Counties Manukau	PU or PU Development Contract
Fitzgerald	Michael	Wanganui	Heartland Championship
Flavell	Patrick	Auckland	PU or PU Development Contract
Fletcher	Fraser	North Otago	Heartland Championship
Flynn	Corey	Canterbury	PU or PU Development Contract
Flynn	Robbie	Tasman	PU or PU Development Contract
Folau	Siaosi	North Otago	Heartland Championship
Fonohema	Alec	Poverty Bay	Heartland Championship
Fonokalafi	Paulo	North Otago	Heartland Championship
Fonua	Aisake	North Otago	Heartland Championship
Fonua	Malakai	South Canterbury	Heartland Championship
Footie	James	Tasman	PU or PU Development Contract
Forbes	Derek (DJ)	Counties Manukau	PU or PU Development Contract
Forbes	Hikairo	Waikato	PU or PU Development Contract
Foreman	Robbie	Manawatu	PU or PU Development Contract
Forrest	Jason	North Otago	Heartland Championship
Forrester	Tainui	East Coast	Heartland Championship
Fotuali'i	Kahn	Tasman	PU or PU Development Contract
France	Matt	North Harbour	PU or PU Development Contract
Franks	Owen	Canterbury	PU or PU Development Contract
Franks	Ben	Tasman	PU or PU Development Contract
Franks	Vernon	Tasman	Academy
Fraser	James	Horowhenua-Kapiti	Heartland Championship
Frater	Andrew	Thames Valley	Heartland Championship
Fridd	Richard	Mid Canterbury	Heartland Championship
Fruean	Robert	Wellington	PU or PU Development Contract
Fualau	Steve	Canterbury	PU or PU Development Contract
Fuglistaller	Scott	Wellington	PU or PU Development Contract
Funnell	Ben	Manawatu	NZ Secondary Schools
Fussell	Grant	Buller	Heartland Championship
Gadsby	Andrew	West Coast	Heartland Championship
Galo	Hanipale	Wellington	PU or PU Development Contract
Gard	Hamish	Canterbury	PU or PU Development Contract
Gardner	Hadley	Horowhenua-Kapiti	Heartland Championship
Gaskell	Daniel	Thames Valley	Heartland Championship
Gualofa	Kaipati	Wellington	PU or PU Development Contract
Gear	Hosea	Wellington	PU or PU Development Contract
Gemmell	Rerehau	Horowhenua-Kapiti	Heartland Championship
Gibbins	Callum	Manawatu	PU or PU Development Contract
Giddens	Sam	Hawkes Bay	PU or PU Development Contract
Gilbert	Jamie	Counties Manukau	Academy



Gill	Jason	Mid Canterbury	Heartland Championship
Gilmore	Brook	Northland	Academy
Glasson	Julius	Otago	Academy
Goebel	Jarek	Auckland	PU or PU Development Contract
Goebel	Hohepa	Bay of Plenty	Academy
Good	Aaron	Manawatu	PU or PU Development Contract
Goode	James	Manawatu	PU or PU Development Contract
Goodes	Norman	Wellington	PU or PU Development Contract
Goodhue	Cam	Otago	Academy
Goodin	Brett	Taranaki	PU or PU Development Contract
Goodin	Gareth	Taranaki	Academy
Goodman	Andrew	Tasman	PU or PU Development Contract
Goodwin	Dan	Northland	PU or PU Development Contract
Gopperth	Jimmy	North Harbour	PU or PU Development Contract
Gosling	Hamish	Manawatu	PU or PU Development Contract
Goulding	Lance	Horowhenua-Kapiti	Heartland Championship
Gower	David	Wanganui	Heartland Championship
Graham	Romana	Waikato	PU or PU Development Contract
Grant	Paul	Otago	PU or PU Development Contract
Grant	Dean	Wairarapa Bush	Heartland Championship
Gregory	Glen	Tasman	PU or PU Development Contract
Griffin	Roy	Northland	PU or PU Development Contract
Guildford	Zac	Hawkes Bay	PU or PU Development Contract
Guillard	Joni	Wairarapa Bush	Heartland Championship
Haami	Brendan	Taranaki	PU or PU Development Contract
Hadfield	James	Tasman	Academy
Hadley	Travis	North Harbour	Academy
Haenga	Chris	Poverty Bay	Heartland Championship
Haika	Leroy	Northland	Academy
Haimona	Kelly	Bay of Plenty	PU or PU Development Contract
Haitana	Karl	Manawatu	PU or PU Development Contract
Haiu	Kurtis	Auckland	PU or PU Development Contract
Hala	Talau	Manawatu	PU or PU Development Contract
Halauea	Haani	Counties Manukau	PU or PU Development Contract
Halai	Frank	Counties Manukau	PU or PU Development Contract
Hall	Josh	Bay of Plenty	PU or PU Development Contract
Hall	David	Southland	PU or PU Development Contract
Hall	Joe	King Country	Heartland Championship
Hall	Lynard	Hawke's Bay	Academy
Hall	Bernie	Canterbury	2009 NZ Under 20
Hames	Kane	Bay of Plenty	Academy
Hamilton	Scott	Canterbury	PU or PU Development Contract
Hamilton	Luke	North Harbour	PU or PU Development Contract
Hammond	Fraser	Wanganui	Heartland Championship
Hammond	Jason	Northland	PU or PU Development Contract
Hancock	Lewis	Otago	Academy
Hancy	Kane	Counties Manukau	PU or PU Development Contract
Hansell-Pune	Roimata	Waikato	PU or PU Development Contract
Hardie	John	Southland	PU or PU Development Contract
Harding	Tom	Wellington	PU or PU Development Contract
Harris	Michael	North Harbour	PU or PU Development Contract
Harrison	Charlie	East Coast	Heartland Championship
Harrison	Doone	East Coast	Heartland Championship
Harrison	Callum	South Canterbury	Heartland Championship
Harrison	David	Thames Valley	Heartland Championship



Hart	Grayson	Auckland	PU or PU Development Contract
Harwood	Joe	Wairarapa Bush	Heartland Championship
Hauiti	Norman	East Coast	Heartland Championship
Haukanima	Stanley	Auckland	PU or PU Development Contract
Hauraki	Michael	Northland	Academy
Hausia	Toetuu	North Otago	Heartland Championship
Hawkins	Jared	Wairarapa Bush	Heartland Championship
Hay	Ross	North Otago	Heartland Championship
Hayward	Jayden	Taranaki	PU or PU Development Contract
Heard	Chris	Auckland	PU or PU Development Contract
Heavy	Luke	Hawke's Bay	Academy
Heinz	Willie	Canterbury	PU or PU Development Contract
Helleur	Brenton	Auckland	PU or PU Development Contract
Helleur	Jamie	Auckland	PU or PU Development Contract
Henare	T	East Coast	Heartland Championship
Hende	Mike	West Coast	Heartland Championship
Henry	Ariki	Bay of Plenty	Academy
Henry	Maru	Bay of Plenty	Academy
Hepi	Kodi	Canterbury	Academy
Herron	Albert	Otago	Academy
Hesketh	Karne	Otago	PU or PU Development Contract
Hesselin	Bryce	Horowhenua-Kapiti	Heartland Championship
Hewitson	Ben	South Canterbury	Heartland Championship
Hewson	Murray	Poverty Bay	Heartland Championship
Hibbard	Sam	Otago	PU or PU Development Contract
Higgins	Jared	King Country	Heartland Championship
Higgison	Dylan	Wairarapa Bush	Heartland Championship
Higgott	Kupa	Horowhenua-Kapiti	Heartland Championship
Hill	Joe	Wellington	PU or PU Development Contract
Hinchco	James	North Harbour	PU or PU Development Contract
Hitchcock	Daniel	Thames Valley	Heartland Championship
Hobbs	Michael	Wellington	PU or PU Development Contract
Hoeata	Jarrad	Taranaki	PU or PU Development Contract
Hoeata	Ricky	Taranaki	Academy
Hohaia	Nathan	Taranaki	PU or PU Development Contract
Hohneck	Josh	Waikato	PU or PU Development Contract
Holani	Sione	Tasman	PU or PU Development Contract
Hollis	Mike	Wairarapa Bush	Heartland Championship
Holloway	Matt	Southland	PU or PU Development Contract
Holmes	Nick	Thames Valley	Heartland Championship
Holwell	David	Northland	PU or PU Development Contract
Hona	Jason	Bay of Plenty	PU or PU Development Contract
Hona	Jamarl	King Country	Heartland Championship
Hooper	Daniel	Buller	Heartland Championship
Hopgood	Hayden	Canterbury	PU or PU Development Contract
Hore	Andrew	Taranaki	PU or PU Development Contract
Horgan	Damien	Taranaki	Academy
Horie	Shota	Canterbury	PU or PU Development Contract
Horton	Glen	Otago	PU or PU Development Contract
Houston	Brad	West Coast	Heartland Championship
Hovell	Colin	Poverty Bay	Heartland Championship
Huata	Bruce	King Country	Heartland Championship
Hughes	Ryan	Buller	Heartland Championship
Hughes	Luke	Tasman	Academy
Hughson	Wayne	Bay of Plenty	PU or PU Development Contract



Humphrey	Ben	Bay of Plenty	PU or PU Development Contract
Hunia	Punani	North Harbour	PU or PU Development Contract
Hunt	Nigel	Wellington	PU or PU Development Contract
Hutana	Jamie	Poverty Bay	Heartland Championship
Hutchinson	Fraser	Mid Canterbury	Heartland Championship
Hyatt	Daniel	Tasman	PU or PU Development Contract
lafeta	Gordon	West Coast	Heartland Championship
lafeta	Nathan	West Coast	Heartland Championship
Templeman	Bryn	Manawatu	PU or PU Development Contract
Iggo	Joel	Tasman	PU or PU Development Contract
Ingram	Brent	Poverty Bay	Heartland Championship
Ioane	Willie	Manawatu	2009 NZ Under 20
Ioane	TJ	Wellington	Academy
longi	Maile	South Canterbury	Heartland Championship
Ireland	Scott	Taranaki	PU or PU Development Contract
Iti	Murray	Waikato	PU or PU Development Contract
Jackett	Matt	Tasman	Academy
Jackman	Mark	Hawkes Bay	PU or PU Development Contract
Jackson	Steve	Tasman	PU or PU Development Contract
James	Aaron	Manawatu	PU or PU Development Contract
James	Matthew	Manawatu	PU or PU Development Contract
Jane	Cory	Wellington	PU or PU Development Contract
Johnson	Michael	Hawkes Bay	PU or PU Development Contract
Johnson	Bevan	West Coast	Heartland Championship
Johnson	Ash	Otago	Academy
Johnstone	Campbell	Canterbury	PU or PU Development Contract
Joubert	Eben	Otago	PU or PU Development Contract
Locke	Justin	Wanganui	Heartland Championship
Kahui	Richard	Waikato	PU or PU Development Contract
Kainga	Michael	Wellington	PU or PU Development Contract
Kaino	Jerome	Auckland	PU or PU Development Contract
Kaloudigibeci	Mitieli	Buller	Heartland Championship
Kamana	James	Waikato	PU or PU Development Contract
Kamea	Randall	Otago	PU or PU Development Contract
Kamo	Vern	Waikato	PU or PU Development Contract
Katene	Luke	Waikato	PU or PU Development Contract
Katene-Roberts	Josh	Bay of Plenty	PU or PU Development Contract
Katonivere	Ron	Wanganui	Heartland Championship
Katu	Robert	Counties Manukau	PU or PU Development Contract
Kawau	Jason	Southland	PU or PU Development Contract
Kearney	Aarron	Horowhenua-Kapiti	Heartland Championship
Keats	Tyson	Canterbury	PU or PU Development Contract
Kelly	Aaron	Waikato	NZ Secondary Schools
Kemp	Mangu	Poverty Bay	Heartland Championship
Kendrabuka	Tomasi	Wairarapa Bush	Heartland Championship
Kennedy	Ross	Otago	PU or PU Development Contract
Keresoni	Iliesa	Taranaki	PU or PU Development Contract
Kerr Barlow	Tawera	Waikato	PU or PU Development Contract
Keys	Josh	Hawkes Bay	PU or PU Development Contract
King	Solomon	Bay of Plenty	PU or PU Development Contract
King	James	North Harbour	PU or PU Development Contract
King	Chris	Southland	PU or PU Development Contract
King	Maia	Tasman	Academy
Kirkpatrick	Daniel	Wellington	PU or PU Development Contract
Knewstubb	Corey	Horowhenua-Kapiti	Heartland Championship



Knox	Warwick	Poverty Bay	Heartland Championship
Koiatu	Koiatu	Counties Manukau	PU or PU Development Contract
Koloamatangi	Tavita	Tasman	PU or PU Development Contract
Kolo'ofai	Uili	Otago	PU or PU Development Contract
Komainaua	Tomasi	Manawatu	PU or PU Development Contract
Koonwaiyou	Tony	Southland	PU or PU Development Contract
Kuka	Aidan	Bay of Plenty	PU or PU Development Contract
Kupa	Jason	Hawkes Bay	PU or PU Development Contract
Lahmert	Warwick	Horowhenua-Kapiti	Heartland Championship
Laitit	Adam	Taranaki	Academy
Lalaga	Parefura	Wellington	PU or PU Development Contract
Lam	Jack	Tasman	PU or PU Development Contract
Lash	James	Tasman	PU or PU Development Contract
Latimer	Tanerau	Bay of Plenty	PU or PU Development Contract
Latu	Puna	Poverty Bay	Heartland Championship
Latu	Tevita	South Canterbury	Heartland Championship
Latu	Kali	South Canterbury	Heartland Championship
Lauaki	Sione	Waikato	PU or PU Development Contract
Lauamanavae	Mauo	North Otago	Heartland Championship
Laulala	Casey	Canterbury	PU or PU Development Contract
Lavea	Tasesa	Counties Manukau	PU or PU Development Contract
Lawrence	Zar	North Harbour	PU or PU Development Contract
Lea	Liseate	North Otago	Heartland Championship
Lea	Sione	Taranaki	Academy
Leach	Hayden	Buller	Heartland Championship
Leach	Shane	Poverty Bay	Heartland Championship
Leafa	Patrick	Auckland	PU or PU Development Contract
Lealamanua	Toese	Manawatu	PU or PU Development Contract
Leary	Karl	Tasman	PU or PU Development Contract
Leaske	Duncan	Thames Valley	Heartland Championship
Lee	August	Counties Manukau	PU or PU Development Contract
Lee	Danny	Hawkes Bay	PU or PU Development Contract
Legg	John	Canterbury	Academy
Leighton	Scott	Poverty Bay	Heartland Championship
Lemalu	Fa'atiga	Auckland	PU or PU Development Contract
Lemalu	Simon	Counties Manukau	PU or PU Development Contract
Leo	Viliani	North Otago	Heartland Championship
Leonard	Brendon	Waikato	PU or PU Development Contract
Leota	Johny	Manawatu	PU or PU Development Contract
Levave	Faifili	Waikato	PU or PU Development Contract
Lewis	Stacey	East Coast	Heartland Championship
Lewis	Horace	East Coast	Heartland Championship
Lewis	Scott	Manawatu	Academy
Lilo	Serge	Wellington	PU or PU Development Contract
Limuloa	Taua	North Otago	Heartland Championship
Lino	Lotoa	North Otago	Heartland Championship
Llewellyn	Rhys	Canterbury	NZ Secondary Schools
Lloyd	Simon	Buller	Heartland Championship
Loane	Willie	Manawatu	PU or PU Development Contract
Logan	Ian	Poverty Bay	Heartland Championship
Lokeni	Malasia	Horowhenua-Kapiti	Heartland Championship
Lolohea	Siale	Mid Canterbury	Heartland Championship
Lowe	Karl	Hawkes Bay	PU or PU Development Contract
Lowe	Steven	Waikato	Academy
Lowrey	Chris	Auckland	PU or PU Development Contract



Luamanu	Matt	Wellington	PU or PU Development Contract
Lubbe	Leon	Manawatu	PU or PU Development Contract
Luteru	Junior	Taranaki	PU or PU Development Contract
Luteru	John	Counties Manakau	Academy
Lynn	Kendrick	Southland	PU or PU Development Contract
Lynn	Toby	Waikato	PU or PU Development Contract
Maafu	Viliami	North Harbour	PU or PU Development Contract
Ma'afu Fia	Siosaia	Manawatu	PU or PU Development Contract
Maaka	Lance	East Coast	Heartland Championship
Maarhuis	Jamie	King Country	Heartland Championship
Maasi	Ilaisa	Counties Manukau	PU or PU Development Contract
Maberly	Za	South Canterbury	Heartland Championship
MacDonald	Lance	Bay of Plenty	PU or PU Development Contract
MacDonald	Leon	Canterbury	PU or PU Development Contract
MacDonald	Jason	Otago	PU or PU Development Contract
MacDonald	Hoani	Southland	PU or PU Development Contract
MacDonald	Quentin	Tasman	PU or PU Development Contract
MacDonald	Jesse	Tasman	Academy
Mackay	Courtney	Taranaki	PU or PU Development Contract
Mackey	Marley	North Harbour	Academy
Mackintosh	Jamie	Southland	PU or PU Development Contract
Mafi	Palanapa	North Otago	Heartland Championship
Maher	James	Counties Manukau	PU or PU Development Contract
Mahony	Chris	Auckland	PU or PU Development Contract
Mailau	Tevita	Auckland	PU or PU Development Contract
Maitland	Sean	Canterbury	PU or PU Development Contract
Maka	Tevita	Poverty Bay	Heartland Championship
Makau	Sefo	Mid Canterbury	Heartland Championship
Makepelu	Jeff	Wellington	Academy
Malneek	Robbie	Tasman	PU or PU Development Contract
Malo	Asalemo	Taranaki	PU or PU Development Contract
Malungahau	Kilifi	West Coast	Heartland Championship
Mamea	Genesis	Wellington	PU or PU Development Contract
Mamea	Joe	North Otago	Heartland Championship
Mans	Kiel	Waikato	PU or PU Development Contract
Mansfield	B	King Country	Heartland Championship
Manson	Scott	Otago	Academy
Manu	Pauliasi	Auckland	PU or PU Development Contract
Manu	Nasi	Canterbury	PU or PU Development Contract
Manu	Seminar	Wellington	PU or PU Development Contract
Manu	Ron	Mid Canterbury	Heartland Championship
Maraku	Caleb	Wanganui	Heartland Championship
Mardon	Mike	Horowhenua-Kapiti	Heartland Championship
Marino	M	East Coast	Heartland Championship
Marris	Sam	Buller	Heartland Championship
Marshall	James	Tasman	PU or PU Development Contract
Martin	Cody	Counties Manukau	PU or PU Development Contract
Masaga	Lelia	Counties Manukau	PU or PU Development Contract
Masoe	Lemi	North Otago	Heartland Championship
Mason	Sam	King Country	Heartland Championship
Mason	Leon	Wanganui	Heartland Championship
Matahiki	Harawira	East Coast	Heartland Championship
Mataira	Jason	East Coast	Heartland Championship
Matakaiongo	Masi	Horowhenua-Kapiti	Heartland Championship
Matanibukaca	Akuila	Poverty Bay	Heartland Championship

Matene	Quin	King Country	Heartland Championship
Matenga	Hoani	Otago	PU or PU Development Contract
Mather	Brett	Otago	PU or PU Development Contract
Matheson	Alby	Wellington	PU or PU Development Contract
Matuauto	Ammon	Tasman	PU or PU Development Contract
Mavor	Mike	North Otago	Heartland Championship
Maw	Daniel	Mid Canterbury	Heartland Championship
Mawle	Tom	Mid Canterbury	Heartland Championship
Mawson	Caleb	Taranaki	Academy
May	Ben	Tasman	PU or PU Development Contract
Mayes	Sam	Bay of Plenty	PU or PU Development Contract
Mayhew	Michael	North Harbour	PU or PU Development Contract
Mayhew	Richard	North Harbour	PU or PU Development Contract
Maynard	Josh	Hawkes Bay	PU or PU Development Contract
McAndrew	Peter	Mid Canterbury	Heartland Championship
McArdle	Oscar	Hawke's Bay	Academy
McBride	Sonny	Horowhenua-Kapiti	Heartland Championship
McCarthy	Dane	Hawke's Bay	Academy
McCartney	Tom	Auckland	PU or PU Development Contract
McCaw	Richie	Canterbury	PU or PU Development Contract
McDonough	Shaun	Wanganui	Heartland Championship
McGahan	Mitchell	Auckland	PU or PU Development Contract
McGougan	James	Bay of Plenty	PU or PU Development Contract
McIlwick	Steve	West Coast	Heartland Championship
McKee	Luke	Waikato	Academy
McKenna	Rick	Taranaki	Academy
McKenty	Joel	Northland	PU or PU Development Contract
McKenzie	Hamish	North Otago	Heartland Championship
McKey	Luke	Waikato	PU or PU Development Contract
McLachlan	Grant	South Canterbury	Heartland Championship
McLaren	Chris	Auckland	PU or PU Development Contract
McLean	Patrick	East Coast	Heartland Championship
Mclean	Andrew	Wairarapa Bush	Heartland Championship
McLeod	James	Mid Canterbury	Heartland Championship
McNamara	Donal	Wellington	PU or PU Development Contract
McNicholl	Kris	Tasman	PU or PU Development Contract
McPhee	Jack	North Harbour	PU or PU Development Contract
Mealamu	Keven	Auckland	PU or PU Development Contract
Meehan	Mike	West Coast	Heartland Championship
Meihana	Richard	East Coast	Heartland Championship
Mellars	Vince	Canterbury	PU or PU Development Contract
Merrilees	Peter	Otago	PU or PU Development Contract
Messam	Liam	Waikato	PU or PU Development Contract
Metcalfe	Jamie	Counties Manukau	PU or PU Development Contract
Middlemis	Daniel	Taranaki	PU or PU Development Contract
Middleton	Chris	Wellington	PU or PU Development Contract
Mika	Salafai	Southland	PU or PU Development Contract
Mikkelson	Tim	Waikato	PU or PU Development Contract
Mikkelson	John	Thames Valley	Heartland Championship
Miller	Craig	South Canterbury	Heartland Championship
Milligan	Keith	Horowhenua-Kapiti	Heartland Championship
Millns	Jason	North Otago	Heartland Championship
Mills	James	North Harbour	Academy
Milmine	Tim	North Otago	Heartland Championship
Milner	Percy	East Coast	Heartland Championship



Mitchell	Brayden	Southland	PU or PU Development Contract
Mitchell	Hamish	Taranaki	PU or PU Development Contract
Moa	Taniela	Auckland	PU or PU Development Contract
Moeke	Ashley	Auckland	PU or PU Development Contract
Monaghan	Sam	Canterbury	PU or PU Development Contract
Monk	Mike	West Coast	Heartland Championship
Moore	John	Bay of Plenty	PU or PU Development Contract
Moore	Mike	Waikato	PU or PU Development Contract
Moore	Kevin	Buller	Heartland Championship
Moore	Matt	Bay of Plenty	Academy
Moran	Tristan	Tasman	PU or PU Development Contract
Morath	Kurt	Taranaki	PU or PU Development Contract
Morgan	Jason	Canterbury	PU or PU Development Contract
Morland	Toby	Otago	PU or PU Development Contract
Motu'u	Motu	Wellington	Academy
Mowbray	Tim	Horowhenua-Kapiti	Heartland Championship
Mua	Tafutu	South Canterbury	Heartland Championship
Muir	Jamie	Hawkes Bay	PU or PU Development Contract
Muir	Shaun	Waikato	PU or PU Development Contract
Mulder	Bertus	Manawatu	PU or PU Development Contract
Mulgrew	Glen	King Country	Heartland Championship
Muliaina	Alesana	Southland	PU or PU Development Contract
Muliaina	Malili	Waikato	PU or PU Development Contract
Mulipola	Lucky	Otago	PU or PU Development Contract
Mullins	Mike	North Otago	Heartland Championship
Mumm	Michael	Buller	Heartland Championship
Munro	Lachie	Auckland	PU or PU Development Contract
Munro	Simon	Auckland	PU or PU Development Contract
Munro	Darren	Wanganui	Heartland Championship
Murch	Jayden	Counties Manukau	PU or PU Development Contract
Murphy	James	Hawke's Bay	Academy
Murray	Bronson	Northland	PU or PU Development Contract
Murray	Joseph	Thames Valley	Heartland Championship
Murray	Anthony	Thames Valley	Heartland Championship
Murrell	Jared	King Country	Heartland Championship
Murtagh	Shaun	East Coast	Heartland Championship
Mustard	Brock	Auckland	PU or PU Development Contract
Nabbs	Thomas	Waikato	PU or PU Development Contract
Nafe	Teu	Bay of Plenty	PU or PU Development Contract
Naikatini	Api	Wellington	PU or PU Development Contract
Naish	Jeff	Mid Canterbury	Heartland Championship
Namatalevu	Osea	Tasman	Academy
Nanai-Williams	Nicholas	North Harbour	PU or PU Development Contract
Nanai-Williams	Tim	Counties Manukau	PU or PU Development Contract
Naoupu	George	Hawkes Bay	PU or PU Development Contract
Nasiga	Rupeni	Counties Manukau	PU or PU Development Contract
Nation	Mike	Thames Valley	Heartland Championship
Needham	Jared	King Country	Heartland Championship
Neighbours	Scott	Buller	Heartland Championship
Nelson	Clark	Buller	Heartland Championship
Neville	Shane	North Harbour	Academy
Newby	Craig	Otago	PU or PU Development Contract
Newland	Clint	Hawkes Bay	PU or PU Development Contract
Newman	Michael	Canterbury	PU or PU Development Contract
Newman	Mike	Canterbury	Academy



Ngatai	Charlie	Poverty Bay	Heartland Championship
Ngatu	Sione	Poverty Bay	Heartland Championship
Ngatupuna	James	Horowhenua-Kapiti	Heartland Championship
Ngauamo	Paul	Canterbury	PU or PU Development Contract
Nicols	Aidan	Manawatu	PU or PU Development Contract
Nikora	Miah	Tasman	PU or PU Development Contract
Niwa	Corey	Taranaki	PU or PU Development Contract
Noakes	Chris	Otago	PU or PU Development Contract
Nolan	Ben	Otago	PU or PU Development Contract
Nonu	Ma'a	Wellington	PU or PU Development Contract
Nonu	Manase	Mid Canterbury	Heartland Championship
Norton	Scott	South Canterbury	Heartland Championship
Nowell	Ben	Canterbury	PU or PU Development Contract
Nuku	Joe	Wairarapa Bush	Heartland Championship
Nutbrown	Jamie	Bay of Plenty	PU or PU Development Contract
O'Hagan	Sheldon	Wanganui	Heartland Championship
Oakes	James	Manawatu	PU or PU Development Contract
O'Brien	Mike	Buller	Heartland Championship
O'Connell	Charles	Canterbury	Academy
O'Connor	Brendon	Canterbury	PU or PU Development Contract
O'Connor	Sean	Manawatu	PU or PU Development Contract
O'Leary	Darren	South Canterbury	Heartland Championship
O'Leary	Reece	Wellington	Academy
Oliver	Aaron	King Country	Heartland Championship
Olsen	Joshua	Waikato	PU or PU Development Contract
Olsen	Paul	King Country	Heartland Championship
Olsen	Josh	Waikato	Academy
Olson	Nick	Wairarapa Bush	Heartland Championship
O'Neill	Kevin	Waikato	PU or PU Development Contract
Ormond	Dean	Auckland	PU or PU Development Contract
Ormond	Jackson	Taranaki	Academy
Ormrod	David	Auckland	Academy
Ormsby	Mike	Bay of Plenty	PU or PU Development Contract
Ormsby	Kristian	Counties Manukau	PU or PU Development Contract
O'Sullivan	Kris	South Canterbury	Heartland Championship
Otto	Jono	Waikato	Academy
Oxenham	Regan	North Harbour	Academy
Paewai	Issac	Wellington	Academy
Palelei	Tuaefe	Counties Manukau	PU or PU Development Contract
Palu	Tomasi	Wellington	PU or PU Development Contract
Paparoa	Junior	Hawke's Bay	Academy
Papps	Michael	Horowhenua-Kapiti	Heartland Championship
Paranihi	Damian	King Country	Heartland Championship
Paranihi	Aaron	Wanganui	Heartland Championship
Parata	Andrew	Otago	PU or PU Development Contract
Parata	Matthew	Buller	Heartland Championship
Parata	Andrew	Otago	Academy
Pareanga	John	Bay of Plenty	PU or PU Development Contract
Parker	Ash	Wellington	PU or PU Development Contract
Parkes	Hadleigh	Canterbury	PU or PU Development Contract
Parsons	James	North Harbour	PU or PU Development Contract
Paterson	James	Canterbury	PU or PU Development Contract
Paterson	Michael	Canterbury	PU or PU Development Contract
Patterson	Hamish	Auckland	PU or PU Development Contract
Paul	Jamie	Buller	Heartland Championship



Paulo	Ti'i	Canterbury	PU or PU Development Contract
Payne	Jared	Northland	PU or PU Development Contract
Pearce	Bowie	Manawatu	Academy
Pehi	Mike	Tasman	PU or PU Development Contract
Pelinise	Afeliki	Tasman	PU or PU Development Contract
Penn	Anthony	Taranaki	PU or PU Development Contract
Penn	Mike	North Otago	Heartland Championship
Perenise	Anthony	Wellington	PU or PU Development Contract
Perewhiti	Joe	Waikato	PU or PU Development Contract
Perez	Paul	Taranaki	PU or PU Development Contract
Perrin	Daniel	Tasman	PU or PU Development Contract
Pesamino	Mikaele	Auckland	PU or PU Development Contract
Peterson	Michael	Southland	PU or PU Development Contract
Petia	Pama	Hawkes Bay	PU or PU Development Contract
Phillips	Baydon	Taranaki	PU or PU Development Contract
Phillips	Chris	East Coast	Heartland Championship
Phillips	H	East Coast	Heartland Championship
Pigou	Ryan	Tasman	Academy
Pihema	Shane	Horowhenua-Kapiti	Heartland Championship
Pisi	George	North Harbour	PU or PU Development Contract
Pisi	Ken	North Harbour	PU or PU Development Contract
Piutau	Siale	Counties Manukau	PU or PU Development Contract
Poching	Lance	Counties Manukau	PU or PU Development Contract
Poff	Jonathon	Tasman	PU or PU Development Contract
Poff	Julian	Canterbury	Academy
Poki	Kade	Tasman	PU or PU Development Contract
Polson	Grant	Manawatu	PU or PU Development Contract
Poluleuligaga	Junior	Auckland	PU or PU Development Contract
Pomare	Mason	Otago	PU or PU Development Contract
Popoali'i	Buxton	Wellington	PU or PU Development Contract
Power	Leon	Taranaki	PU or PU Development Contract
Prattley	Sam	Tasman	Academy
Preston	Richard	South Canterbury	Heartland Championship
Price	Leighton	Hawkes Bay	PU or PU Development Contract
Prinsloo	Nicolas	Taranaki	PU or PU Development Contract
Pryor	Daniel	Auckland	PU or PU Development Contract
Puamau	Jone	Otago	Academy
Puddy	Richard	Wairarapa Bush	Heartland Championship
Puki	Tane	Southland	PU or PU Development Contract
Purdy	Martin	North Harbour	PU or PU Development Contract
Qaraniqo	Sekonaia	Otago	PU or PU Development Contract
Qaranivalu	Manu	Horowhenua-Kapiti	Heartland Championship
Quinlan	Brad	Mid Canterbury	Heartland Championship
Raikabula	Lote	Manawatu	PU or PU Development Contract
Raikuna	David	Counties Manukau	PU or PU Development Contract
Ramsay	Daniel	Southland	PU or PU Development Contract
Ranger	Rene	Northland	PU or PU Development Contract
Rangitaawa	Israel	Thames Valley	Heartland Championship
Raqamate	Jone	Buller	Heartland Championship
Rasmussen	Hayden	Thames Valley	Heartland Championship
Ravulo	Malakai	North Harbour	PU or PU Development Contract
Rawcliffe	Ben	South Canterbury	Heartland Championship
Rawnsley	Malcolm	Thames Valley	Heartland Championship
Rayner	Chris	Wanganui	Heartland Championship
Read	Kieran	Canterbury	PU or PU Development Contract



Reed	Hugh	Hawkes Bay	PU or PU Development Contract
Reedy	A	East Coast	Heartland Championship
Reid	Michael	North Harbour	PU or PU Development Contract
Renata	Trent	Waikato	PU or PU Development Contract
Retallick	Culum	Bay of Plenty	PU or PU Development Contract
Richards	Matthew	East Coast	Heartland Championship
Rickard	Jason	Mid Canterbury	Heartland Championship
Rickards	Willie	Southland	PU or PU Development Contract
Riddell	James	Bay of Plenty	PU or PU Development Contract
Riini	Wayne	King Country	Heartland Championship
Rimene	Paddy	Wairarapa Bush	Heartland Championship
Rinakawa	Ropate	North Harbour	Academy
Ripia	William	Taranaki	PU or PU Development Contract
Ritchie	Andrew	Northland	Academy
Riwai-Couch	Nathan	Wairarapa Bush	Heartland Championship
Roache	Jason	Counties Manukau	PU or PU Development Contract
Robertson	Glen	Waikato	NZ Secondary Schools
Robinson	Robert	Southland	PU or PU Development Contract
Robinson	Ged	Wellington	PU or PU Development Contract
Robinson	Blair	West Coast	Heartland Championship
Rodgers	Paul	Manawatu	PU or PU Development Contract
Rodley	James	Northland	PU or PU Development Contract
Rokocoko	Joe	Auckland	PU or PU Development Contract
Rolls	Nathan	Wairarapa Bush	Heartland Championship
Romans	Sean	Otago	PU or PU Development Contract
Ropati	Romi	Counties Manukau	PU or PU Development Contract
Ross	Isaac	Canterbury	PU or PU Development Contract
Ross	Adaam	Manawatu	PU or PU Development Contract
Rossiter	Philip	Buller	Heartland Championship
Rowe	Peter	Wanganui	Heartland Championship
Rowe	Mike	West Coast	Heartland Championship
Rua	Ross	King Country	Heartland Championship
Rudman	Brett	Wairarapa Bush	Heartland Championship
Rule	Mathew	King Country	Heartland Championship
Rule	Nick	King Country	Heartland Championship
Ruru	Mike	Hawke's Bay	Academy
Ruruku	Quintin	Horowhenua-Kapiti	Heartland Championship
Rutledge	Jason	Southland	PU or PU Development Contract
Ryan	Matt	Mid Canterbury	Heartland Championship
Ryan	Alex	Southland	2009 NZ Under 20
Ryder	Tom	Taranaki	PU or PU Development Contract
Sadlier	Renata	East Coast	Heartland Championship
Sadlier	Leroy	East Coast	Heartland Championship
Saifoloi	Gary	Counties Manukau	PU or PU Development Contract
Saili	Peter	Auckland	PU or PU Development Contract
Sakalia	Solomona	Wellington	PU or PU Development Contract
Samisoni	Tuataina	North Otago	Heartland Championship
Samupo	Pomare	Taranaki	PU or PU Development Contract
Sanders	Armyrn	Waikato	PU or PU Development Contract
Sargison	Scott	Wanganui	Heartland Championship
Sasagi	Stephen	Tasman	PU or PU Development Contract
Saseve	Tua	North Harbour	PU or PU Development Contract
Sa'u	Male	Counties Manukau	PU or PU Development Contract
Saunders	Matt	Southland	PU or PU Development Contract
Savage	Joe	North Harbour	PU or PU Development Contract



Savea	Julian	Wellington	PU or PU Development Contract
Savioti	Faingā'a	South Canterbury	Heartland Championship
Saywell	Willie	Bay of Plenty	Academy
Scheres	Thomas	Waikato	PU or PU Development Contract
Scholefield	Richard	East Coast	Heartland Championship
Schuster	Shane	Manawatu	Academy
Schwalger	John	Wellington	PU or PU Development Contract
Sefo	Ekeroma	North Otago	Heartland Championship
Sekona	Tobias	North Otago	Heartland Championship
Selwyn	Mark	Counties Manukau	PU or PU Development Contract
Semple	James	Auckland	PU or PU Development Contract
Setephano	Steven	Otago	PU or PU Development Contract
Shane	Dale	Waikato	PU or PU Development Contract
Shaw	Mike	Wairarapa Bush	Heartland Championship
Shearer	Peter	Mid Canterbury	Heartland Championship
Shelford	Dane	Southland	PU or PU Development Contract
Shelford	Ryan	Tasman	Academy
Shepherd	Chad	Hawkes Bay	PU or PU Development Contract
Shields	Bradley	Wellington	PU or PU Development Contract
Shoemark	Jason	Hawkes Bay	PU or PU Development Contract
Siaosi	Maturo	South Canterbury	Heartland Championship
Silvester	Dion	Thames Valley	Heartland Championship
Sim	Steve	Mid Canterbury	Heartland Championship
Simmonds	Kurt	Wairarapa Bush	Heartland Championship
Simpson	Tom	Hawkes Bay	PU or PU Development Contract
Simpson	Roy	King Country	Heartland Championship
Simpson	Corey	West Coast	Heartland Championship
Sipa	Iona	Southland	PU or PU Development Contract
Sivivatu	Sitiveni	Waikato	PU or PU Development Contract
Slade	Colin	Canterbury	PU or PU Development Contract
Small	Chris	Canterbury	Academy
Smart	David	Otago	Academy
Smiler	Jordan	Waikato	PU or PU Development Contract
Smith	David	Auckland	PU or PU Development Contract
Smith	Francis	Auckland	PU or PU Development Contract
Smith	Warren	Bay of Plenty	PU or PU Development Contract
Smith	Aaron	Manawatu	PU or PU Development Contract
Smith	Graham	Manawatu	PU or PU Development Contract
Smith	Chris	North Harbour	PU or PU Development Contract
Smith	Jerome	North Harbour	PU or PU Development Contract
Smith	Francis	Northland	PU or PU Development Contract
Smith	Ben	Otago	PU or PU Development Contract
Smith	Toby	Waikato	PU or PU Development Contract
Smith	Conrad	Wellington	PU or PU Development Contract
Smith	Eugene	Wellington	PU or PU Development Contract
Smith	Carl	King Country	Heartland Championship
Smith	Eric	South Canterbury	Heartland Championship
Smith	Craig	Southland	Academy
Smith	Adrian	North Harbour	Academy
Smith	Dan	Manawatu	Academy
Smith	Robbie	Otago	Academy
Smylie	Chris	North Harbour	PU or PU Development Contract
Smyth	Jon	Wanganui	Heartland Championship
Snee	Dan	Otago	PU or PU Development Contract
Snyman	Johan	Hawkes Bay	PU or PU Development Contract



Soakai	Alando	Otago	PU or PU Development Contract
Somerville	Greg	Canterbury	PU or PU Development Contract
So'oialo	Rodney	Wellington	PU or PU Development Contract
Sopoaga	Lima	Wellington	PU or PU Development Contract
Soqeta	Ratu	Southland	PU or PU Development Contract
Soqeta	Nemia	Taranaki	PU or PU Development Contract
Speight	Henry	Waikato	PU or PU Development Contract
Spence	Mike	Wairarapa Bush	Heartland Championship
Spratt	Jonathan	Taranaki	PU or PU Development Contract
Stanaway	Teddy	Auckland	PU or PU Development Contract
Standen	Josh	King Country	Heartland Championship
Stanley	Winston	Auckland	PU or PU Development Contract
Stanley-Williams	Benson	Auckland	PU or PU Development Contract
Stechman	Greg	Buller	Heartland Championship
Stephens	Andrew	Buller	Heartland Championship
Stevens	Sam	Manawatu	PU or PU Development Contract
Stevenson	Daniel	Waikato	PU or PU Development Contract
Stevenson	Lance	Wairarapa Bush	Heartland Championship
Stewart	Shawn	Counties Manukau	PU or PU Development Contract
Stewart	Blair	Southland	PU or PU Development Contract
Stewart	Mark	Taranaki	PU or PU Development Contract
Stone	Casey	Otago	PU or PU Development Contract
Stowers	Sherwin	Counties Manukau	PU or PU Development Contract
Suavine	Tanu	South Canterbury	Heartland Championship
Summerfield	Kent	Mid Canterbury	Heartland Championship
Summerfield	Mark	Mid Canterbury	Heartland Championship
Sutherland	Josh	Waikato	PU or PU Development Contract
Svensen	Ben	North Harbour	Academy
Swart	Charles	Otago	Academy
Sweeney	Dwayne	Waikato	PU or PU Development Contract
Symes	Tom	Hawkes Bay	PU or PU Development Contract
Ta'auso	Niva	Counties Manukau	PU or PU Development Contract
Ta'avao	Angus	Auckland	PU or PU Development Contract
Taetuli	Kaleni	Southland	Academy
Tafa	Timaru	South Canterbury	Heartland Championship
Tagicakibau	Seremaia	Counties Manukau	PU or PU Development Contract
Tairea	Tutu	Auckland	PU or PU Development Contract
Takataka	Longo	Waikato	PU or PU Development Contract
Talakai	Latu	Waikato	PU or PU Development Contract
Talanoa	Chris	North Otago	Heartland Championship
Taliu	Leo	Northland	PU or PU Development Contract
Tamariki	Hua	Southland	PU or PU Development Contract
Tamatea	K	Poverty Bay	Heartland Championship
Tamatea	William	Poverty Bay	Heartland Championship
Tamati	Shae	Hawke's Bay	PU or PU Development Contract
Tansley	Craig	Horowhenua-Kapiti	Heartland Championship
Tatafu	Tokelau	North Otago	Heartland Championship
Tauelangi	Sione	South Canterbury	Heartland Championship
Taufalele	Suliasi	Counties Manukau	PU or PU Development Contract
Taufui	Patali	Manawatu	PU or PU Development Contract
Taulafo	Zac	Tasman	PU or PU Development Contract
Taulava	Semisi	Taranaki	PU or PU Development Contract
Taumalolo	Fakaanaua	Hawkes Bay	PU or PU Development Contract
Tauwhare	Daniel	West Coast	Heartland Championship
Tavita	Sefo	Horowhenua-Kapiti	Heartland Championship



Tavite	Jon	Horowhenua-Kapiti	Heartland Championship
Taylor	Andre	Manawatu	PU or PU Development Contract
Taylor	Ezra	Otago	PU or PU Development Contract
Taylor	Alex	Southland	PU or PU Development Contract
Taylor	Beau	King Country	Heartland Championship
Taylor	Logan	Canterbury	NZ Secondary Schools
Taylor	Tom	Canterbury	2009 NZ Under 20
Te Huia	Jeremy	North Otago	Heartland Championship
Te Moana	David	Manawatu	PU or PU Development Contract
Te Rito	Campbell	Poverty Bay	Heartland Championship
Te Whare	Pehitaia	Southland	PU or PU Development Contract
Temara	Jason	Manawatu	Academy
Templeman	Bryn	Manawatu	Academy
Thomas	David	Auckland	PU or PU Development Contract
Thompson	Isaac	Manawatu	PU or PU Development Contract
Thompson	David	Otago	PU or PU Development Contract
Thompson	Nathan	Buller	Heartland Championship
Thompson	Leigh	North Harbour	Academy
Thompson	Blade	Poverty Bay	NZ Secondary Schools
Thomson	Nick	Canterbury	PU or PU Development Contract
Thomson	Adam	Otago	PU or PU Development Contract
Thorn	Brad	Tasman	PU or PU Development Contract
Thrush	Jeremy	Wellington	PU or PU Development Contract
Tialata	Neemia	Wellington	PU or PU Development Contract
Tibby	Lance	King Country	Heartland Championship
Tietjens	Doug	Manawatu	PU or PU Development Contract
Tikoiorotuma	Asaeli	Wanganui	Heartland Championship
Timaloa	Leon	Southland	Academy
Timani	Thomas	Auckland	PU or PU Development Contract
Timu	Star	Hawke's Bay	Academy
Tiueti	Fo'ou	Tasman	Academy
Todd	Matthew	Canterbury	PU or PU Development Contract
Todd	Shaun Tamariki	Southland	Academy
Toe'ava	Isaia	Auckland	PU or PU Development Contract
Tohaia	Ryan	Thames Valley	Heartland Championship
Tokakece	Peniasi	Hawkes Bay	PU or PU Development Contract
Tokula	Savenaca	Waikato	PU or PU Development Contract
Tololima-Auva'a	Onosai	Auckland	PU or PU Development Contract
Tonga	Maulotu	North Otago	Heartland Championship
Tongotongo	Samisoni	North Otago	Heartland Championship
To'omoga	Sinoti	Wellington	PU or PU Development Contract
Tora (Mudu)	Maleli	West Coast	Heartland Championship
Totorewa	Darren	Counties Manukau	PU or PU Development Contract
Townsend	Josh	Otago	PU or PU Development Contract
Townsend	Daniel	East Coast	Heartland Championship
Treeby	Shaun	Wellington	2009 NZ Under 20
Treleaven	Stephen	Manawatu	PU or PU Development Contract
Triggs	Hayden	Manawatu	PU or PU Development Contract
Truesdale	Brad	Hawke's Bay	Academy
Tu'uga	Filo	Thames Valley	Heartland Championship
Tua'au	Junior	Auckland	PU or PU Development Contract
Tuiaki	Siole	South Canterbury	Heartland Championship
Tuifua	Isaiah	Taranaki	PU or PU Development Contract
Tuifua	Taiasina	Taranaki	PU or PU Development Contract
Tuigamala	Gauefa	North Harbour	2009 NZ Under 20



Tuineau	Joe	Southland	PU or PU Development Contract
Tu'ipulota	Mapa	Auckland	PU or PU Development Contract
Tuipulotu	Narinda	King Country	Heartland Championship
Tu'ipulotu	Tane	Wellington	PU or PU Development Contract
Tuirirangi	Kuramate	Taranaki	PU or PU Development Contract
Tuitavake	Anthony	North Harbour	PU or PU Development Contract
Tuitavake	Nafi	North Harbour	PU or PU Development Contract
Tuitoga	Jona	North Harbour	PU or PU Development Contract
Tukaki	Rikki	Tasman	PU or PU Development Contract
Tuliakiona	Tevita	South Canterbury	Heartland Championship
Tulou	Alex	Wellington	PU or PU Development Contract
Tuoro	Chad	Counties Manukau	PU or PU Development Contract
Tupe	Joseph	Auckland	NZ Secondary Schools
Tupuivao	Thomas	Wellington	PU or PU Development Contract
Tupuola	Patolo	South Canterbury	Heartland Championship
Tupuola	Leafi	Hawke's Bay	Academy
Turei	Brad	Poverty Bay	Heartland Championship
Tuu'u	Mikaele	Canterbury	PU or PU Development Contract
Tweddle	Greg	Wellington	PU or PU Development Contract
Tyrell	Denning	Wanganui	Heartland Championship
UluiBOROTU	Eroni	West Coast	Heartland Championship
Ulukuta	Lassa	West Coast	Heartland Championship
Umaga-Marshall	Tu	Wellington	PU or PU Development Contract
Urlich	Blair	Northland	PU or PU Development Contract
Vaa	Fevaai	Hawkes Bay	PU or PU Development Contract
Vaaelua	Lomiga	West Coast	Heartland Championship
Vailoaloa	Lualua	Tasman	PU or PU Development Contract
Vainikolo	Fetu'u	Northland	PU or PU Development Contract
Van Der Heeyden	Curtis	Bay of Plenty	Academy
Van der Heijden	Andrew	Counties Manukau	PU or PU Development Contract
vant Leven	Matt	Bay of Plenty	Academy
Vardy	Adam	Horowhenua-Kapiti	Heartland Championship
Vaughan	Thomas	North Harbour	Academy
Veale	Marty	Northland	PU or PU Development Contract
Vercoe	Jed	Otago	PU or PU Development Contract
Vijeon	Joggie	Manawatu	PU or PU Development Contract
Vili	Tanner	Counties Manukau	PU or PU Development Contract
Vitale	Lucky	Horowhenua-Kapiti	Heartland Championship
Vito	Victor	Wellington	PU or PU Development Contract
Vosaki	Ratu	Poverty Bay	Heartland Championship
Waenga	Daniel	Hawkes Bay	PU or PU Development Contract
Waenga	Watene	Waikato	PU or PU Development Contract
Wairau	Lionel	Waikato	Academy
Waitoa	Willie	East Coast	Heartland Championship
Waitoa	Ricky	East Coast	Heartland Championship
Walding	Cass	Northland	Academy
Waldrom	Scott	Taranaki	PU or PU Development Contract
Waldrom	Thomas	Wellington	PU or PU Development Contract
Walker	Chris	Taranaki	PU or PU Development Contract
Walker	Greg	Wellington	PU or PU Development Contract
Walker	B	East Coast	Heartland Championship
Walker	David	Manawatu	Academy
Walker-Blair	Charlie	Wairarapa Bush	Heartland Championship



Wallis	Matthew	Bay of Plenty	PU or PU Development Contract
Walsh	Tawhiri	Poverty Bay	Heartland Championship
Walters	Brad	Buller	Heartland Championship
Waqaseduadua	Vili	North Harbour	PU or PU Development Contract
Warren	James	Poverty Bay	Heartland Championship
Watene	Jordan	Wairarapa Bush	Heartland Championship
Watisoni	Lotawa	Auckland	PU or PU Development Contract
Watson	Danny	Thames Valley	Heartland Championship
Watt	Brendon	Wellington	PU or PU Development Contract
Webster	Nick	North Otago	Heartland Championship
Weepu	Piri	Wellington	PU or PU Development Contract
Weepu	Manu	West Coast	Heartland Championship
Wells	Mark	Southland	PU or PU Development Contract
Wessels	Ryan	Horowhenua-Kapiti	Heartland Championship
West	Craig	Waikato	PU or PU Development Contract
Whallen	Phil	Taranaki	Academy
Wheeler	Richard	Canterbury	PU or PU Development Contract
Wheeler	Joseph	Tasman	PU or PU Development Contract
Whetton	William	North Harbour	PU or PU Development Contract
White	Nick	Auckland	PU or PU Development Contract
White	Nathan	Waikato	PU or PU Development Contract
Whitelock	Adam	Canterbury	PU or PU Development Contract
Whitelock	George	Canterbury	PU or PU Development Contract
Whitelock	Samuel	Canterbury	PU or PU Development Contract
Whitelock	Luke	Manawatu	NZ Secondary Schools
Whyte	Josh	Horowhenua-Kapiti	Heartland Championship
Wikitera	Jordon	Northland	Academy
Williams	Murray	Bay of Plenty	PU or PU Development Contract
Williams	Paul	Canterbury	PU or PU Development Contract
Williams	Ali	Tasman	PU or PU Development Contract
Willis	Tom	Waikato	PU or PU Development Contract
Willison	Jackson	Waikato	PU or PU Development Contract
Willoughby	Josh	Poverty Bay	Heartland Championship
Wilson	Ryan	North Harbour	PU or PU Development Contract
Wilson	James	Southland	PU or PU Development Contract
Wilson	Frae	Wellington	PU or PU Development Contract
Wilson	Mike	Wairarapa Bush	Heartland Championship
Wilson	Rob	West Coast	Heartland Championship
Wilson	Nick	West Coast	Heartland Championship
Windlebourne	Tim	Northland	Academy
Wirepa	Morgan	East Coast	Heartland Championship
Wise	Todd	Wanganui	Heartland Championship
Woodcock	Tony	North Harbour	PU or PU Development Contract
Wright	Reuben	Northland	Academy
Wulf	Rudi	North Harbour	PU or PU Development Contract
Wyatt	Josh	Hawke's Bay	Academy
Wylie	Robin	East Coast	Heartland Championship
York	Josh	North Harbour	PU or PU Development Contract
York	Josh	North Harbour	Academy



NEW ZEALAND RUGBY UNION Player Movement Regulations

Contents

Part 1 • Definitions	52
1 Definitions	52
Part 2 • Player Movement	54
2 Introduction	54
3 Transfer Period	54
4 Captured Union	54
5 Transfer of Air New Zealand Cup Captured Players	54
6 Transfer of Heartland Championship Captured Players	55
7 Notification of Transfer.....	56
Part 3 • General	57
8 Changes to Regulations.....	57
9 Breach of Regulations.....	57
Schedules	
Player Movement Form – Air New Zealand Cup Captured Player	58
Player Movement Form – Heartland Championship Captured Player	59



Part 1 • Definitions

1 DEFINITIONS

In these Regulations, unless the context requires or indicates otherwise, the following definitions shall apply:

“Air New Zealand Cup Captured Player” has the meaning set out in clause 5.1;

“Air New Zealand Cup” means the Air New Zealand Cup Competition as provided for under the *NZRU Domestic Competition Regulations*. Any reference to “Air New Zealand Cup” has the same meaning as “Premier Competition” in the Collective Agreement;

“Air New Zealand Cup Union” means a Provincial Union competing in the Air New Zealand Cup;

“Captured Union” has the meaning set out in clause 4.1;

“Collective Agreement” means the Collective Agreement entered into by the NZRU and the RPC which comes into effect from 1 January 2006;

“Contract Year” means the calendar year (commencing on 1 January and concluding on 31 December) and may be defined with reference to a particular year (eg Contract Year 2006);

“Development Compensation Fee” means the payment a Transferring Union is required to make to a Player’s Captured Union pursuant to these Regulations;

“Heartland Championship Captured Player” has the meaning set out in clause 6.1;

“Heartland Championship” means the Heartland Championship Competition as provided for under the *NZRU Domestic Competition Regulations*. Any reference to “Heartland Championship” has the same meaning as “Division One” in the Collective Agreement;

“Heartland Championship Union” means a Provincial Union competing in the Heartland Championship;

“Home Super Rugby Franchise” has the meaning set out in clause 43.1 of the Collective Agreement;

“NZRU” means the New Zealand Rugby Union Incorporated;

“Player” means a rugby union player who is an Air New Zealand Cup Captured Player or a Heartland Championship Captured Player;

“Playing 22” means the fifteen selected players plus seven reserves as recorded on the team sheet provided to the NZRU for any Air New Zealand Cup or Heartland Championship match;

“Provincial Union” means an Affiliated Union as defined in the *NZRU Constitution*;

“Provincial Union Contract” means the contract set out in Appendix 9 of the Collective Agreement;

“Provincial Union Development Contract” means the contract set out in Appendix 10 of the Collective Agreement;

“Provincial Union Term” has the meaning set out in clause 46.4 of the Collective Agreement;

“Provincial Union Development Term” has the meaning set out in clause 47.3 of the Collective Agreement;

“Registered” means a player who has completed the *NZRU Senior Player Registration Form* for that Contract Year;

“RPC” means the Rugby Players Collective Inc;

“Super Rugby Competition” has the meaning set out in clause 38.1 of the Collective Agreement;

“Super Rugby Eligibility Date” is a date specified by the NZRU in agreement with the RPC (with such agreement to be reached no later than the end of August in each Contract Year);



“Transfer” is the process by which a Player alters his Provincial Union by moving from his Captured Union to the Transferring Union pursuant to these Regulations;

“Transfer Period” has the meaning set out in clause 3.1;

“Transferring Union” in relation to a particular Player means the Provincial Union to which that Player wishes to transfer;



Part 2 • Player Movement

2 INTRODUCTION

- 2.1 These Regulations govern the process by which a Player alters their Provincial Union.
- 2.2 The Transfer of any Player wishing to be eligible to play for a Provincial Union other than the Player's Captured Union must take place in accordance with these Regulations.
- 2.3 There is no restriction upon the number of Players that may Transfer from, or to, any Provincial Union.

3 TRANSFER PERIOD

- 3.1 The Transfer of a Player may only occur during the period 1 October in one Contract Year to the Friday following the Super Rugby Competition final in the immediately following Contract Year. This period is the **Transfer Period**.
- 3.2 If the Transfer of a Player is agreed in writing and notified to the NZRU prior to the Super Rugby Eligibility Date (even if it is to take effect at a later date in that Transfer Period) the Player's Transferring Union will be taken into account for the purpose of determining his Home Franchise for the following Super Rugby Competition.
- 3.3 A Player may transfer only once in each Transfer Period.

4 CAPTURED UNION

- 4.1 An Air New Zealand Cup Captured Player or a Heartland Championship Captured Player shall be deemed to be captured by the Provincial Union in which he is currently Registered. This Provincial Union will be the Player's **Captured Union** until otherwise determined pursuant to these Regulations.
- 4.2 A Player is not eligible to be selected for the Playing 22 of a Provincial Union, other than his Captured Union, for the Air New Zealand Cup or Heartland Championship immediately following the Transfer Period during which the Player becomes a Air New Zealand Cup Captured Player or Heartland Championship Captured Player unless the Player has transferred in accordance with these Regulations, or has been loaned in accordance with the *NZRU Player Eligibility Regulations*.

5 TRANSFER OF AIR NEW ZEALAND CUP CAPTURED PLAYERS

- 5.1 An **Air New Zealand Cup Captured Player** is a player who is:
 - (a) party to a Provincial Union Contract or a Provincial Union Development Contract at any time during the Transfer Period; or
 - (b) enrolled in one of the 14 Regional Rugby Academies and Registered with a club affiliated to an Air New Zealand Cup Union during the Contract Year in which the Transfer Period commences; or
 - (c) Registered with a club affiliated to an Air New Zealand Cup Union and is either:
 - (i) named in any New Zealand Under 20 representative squad announced during the Contract Year in which the Transfer Period commences; or
 - (ii) named in any New Zealand Under 20 representative squad announced during the Transfer Period.
- 5.2 A Player who is a party to a Provincial Union Contract (or Provincial Union Development Contract) may only Transfer following the expiry of that Player's Provincial Union Term (or Provincial Union Development Term, as the case may be) or earlier termination of these contracts. For the avoidance of doubt, a Player is not in breach of any employment obligation by entering into discussions during his Provincial Union Term or Provincial Union Development Term concerning employment arrangements which are proposed for a period after the expiry of that Term.
- 5.3 A Player who is not a party to a Provincial Union Contract or Provincial Union Development Contract may enter into a Provincial Union Contract or Provincial Union Development Contract at any time.

5.4 An Air New Zealand Cup Captured Player may Transfer to another Air New Zealand Cup Union or a Heartland Championship Union during the Transfer Period using the Player Movement Form attached as Schedule 1.

5.5 No Development Compensation Fee is payable where an Air New Zealand Cup Captured Player Transfers.

6 TRANSFER OF HEARTLAND CHAMPIONSHIP CAPTURED PLAYERS

6.1 A **Heartland Championship Captured Player** is a player who is:

- (a) Registered with a club affiliated to a Heartland Championship Union and is selected in the Playing 22 of that Heartland Championship Union on one or more occasions during the Heartland Championship taking place at the time the Transfer Period commences; or
- (b) Registered with a club affiliated to a Heartland Championship Union and is either:
 - (i) named in any New Zealand Under 20 representative squad announced during the Contract Year in which the Transfer Period commences; or
 - (ii) named in any New Zealand Under 20 representative squad announced during the Transfer Period; or
- (c) Registered with a club affiliated to a Heartland Championship Union and is either:
 - (i) named in the New Zealand Secondary Schools representative squad announced during the Contract Year in which the Transfer Period commences; or
 - (ii) named in any New Zealand Secondary Schools representative squad announced during the Transfer Period.

6.2 A Heartland Championship Captured Player may Transfer to an Air New Zealand Cup Union during the Transfer Period using the Player Movement Form attached as Schedule 2. For the avoidance of doubt, no Transfer is required where a Heartland Championship Captured Player moves to another Heartland Championship Union and clause 4.2 will not apply.

6.3 A Player who is a party to an agreement with a Heartland Championship Union may only Transfer following the expiry of that agreement.

6.4 A Development Compensation Fee may be payable where a Heartland Championship Captured Player Transfers to an Air New Zealand Cup Union. The maximum Development Compensation Fee in these circumstances is as follows:

Category of Player	Maximum Development Compensation Fee
“Heartland Championship” as defined in 6.1(a)	\$15,000
“New Zealand Under 20” as defined in 6.1 (b)	\$15,000
“New Zealand Secondary Schools” as defined in 6.1 (d)	\$10,000

6.5 Where a Heartland Championship Captured Player wishes to Transfer to an Air New Zealand Cup Union there are two alternatives available to the Transferring Union:

- (a) The Transferring Union may agree a Development Compensation Fee with the Captured Union to be paid at the time the Transfer takes place during the Transfer Period; or
- (b) The Transferring Union may agree at the time of the Transfer to pay the Captured Union a Development Compensation Fee for that Heartland Championship Captured Player in the event that the Transferring Union contracts that Player on a Provincial Union Contract or Provincial Union Development Contract during the Contract Year in which the Transfer Period finishes. For the avoidance of doubt:
 - i. the amount of such Development Compensation Fee need not be determined at the time of the Transfer; and
 - ii. the Development Compensation Fee will be payable at the time the Player enters into a Provincial Union Contract or Provincial Union Development Contract.



In the event the Transferring Union cannot agree the amount of the Development Compensation Fee with the Captured Union the maximum Development Compensation Fee will be payable.

- 6.6 In the event a Development Compensation Fee is payable by a Transferring Union, whether at the time of the Transfer or at the time the Player is contracted by the Transferring Union, the Transferring Union shall deposit the agreed Development Compensation Fee (plus GST) in the NZRU Transfer Account by no later than 10 working days after the Transfer or 10 working days after the Player is contracted by the Transferring Union.
- 6.7 In the event a Transferring Union fails to pay to the NZRU any agreed Development Compensation Fee the NZRU may deduct the amount from the next NZRU grant due to be paid to the Transferring Union.
- 6.8 The NZRU shall within 10 working days of receiving any Development Compensation Fee, or deducting it from any NZRU grant, pay the full amount to the Captured Union.

7 NOTIFICATION OF TRANSFER

- 7.1 No Transfer of a Player will be recognised by the NZRU unless a Player Movement Form as set out in Schedule 1 or 2 has been submitted to the NZRU.
- 7.2 All Player Movement Forms must be submitted to the NZRU prior to the end of the Transfer Period.
- 7.3 At the end of the Transfer Period the NZRU shall notify all Provincial Unions of all Transfers that occurred during that Transfer Period whereupon any Player will no longer be captured by his Captured Union and shall be entitled to be selected and play for the Playing 22 of the Transferring Union from the date of such notification.



Part 3 • General

8 CHANGES TO REGULATIONS

- 8.1 These Regulations have been developed pursuant to the Collective Agreement.
- 8.2 In the event the NZRU wishes to make amendments to these Regulations it must comply with the following process:
- (a) in the first instance, the NZRU must meet with the RPC and attempt to obtain its agreement to any amendment;
 - (b) if the RPC withholds agreement, the NZRU may proceed to make the amendment (provided that, in that event the RPC may seek to rely upon the problem resolution provisions of the Collective Agreement).

9 BREACH OF REGULATIONS

- 9.1 Any breach of these Regulations by a Provincial Union will be dealt with by the NZRU in accordance with clause 14 of the *NZRU Domestic Competition Regulations*.
- 9.2 Prior to reaching a conclusion that there has been a breach of these Regulations, the NZRU will notify the RPC of the nature of the alleged breach and provide the RPC with access to any information and an opportunity to have input into the investigation of any alleged breach, including any submissions RPC wish to make about penalty.

**PLAYER MOVEMENT FORM
AIR NEW ZEALAND CUP CAPTURED PLAYER**

1. Player Details *(Player to complete)*

Name:
(First name/s) *(Surname)*

(a) Captured Union (Union transferring from):

(b) Transferring Union (Union transferring to):

Status during the Transfer Period (tick relevant option/s):

-
- | | |
|---|--------------------------|
| Provincial Union or Provincial Union Development Contract | <input type="checkbox"/> |
| Rugby Academy Member | <input type="checkbox"/> |
| New Zealand Under 20 Representative | <input type="checkbox"/> |
-

This Transfer will take effect from:
(Transfer Date)

.....
(Signature of Player) *(Date)*

2. Details of Transfer *(Provincial Unions to complete)*

We, the Provincial Unions specified below, agree that the above named Player will Transfer in accordance with the NZRU Player Movement Regulations. From the Transfer Date the Player will be eligible to play for the Transferring Union in the Air New Zealand Cup or Heartland Championship. If this form is agreed by all parties and notified to the NZRU before the Super Rugby Eligibility Date this Transfer will be taken into account for the Super Rugby Selection Process, regardless of the Transfer Date.

Name of Captured Union:

.....
(Signature of Authorised Person from the Captured Union)

Name: Position: Date:

Name of Transferring Union:

.....
(Signature of Authorised Person from the Transferring Union)

Name: Position: Date:



For Office use only:

1. *Date Form received:*
2. *Agreed Transferring Union:*



NEW ZEALAND RUGBY UNION
Competition Regulations Handbook • 2009
Domestic Competitions





NEW ZEALAND RUGBY UNION Domestic Competition Regulations

Contents

1 Composition	64
2 Definitions.....	64
3 Format	64
4 Scheduling and Cancellation.....	64
5 Competition Points.....	65
6 Referees and Touch Judges.....	65
7 Funding.....	66
8 Complimentary Tickets	66
9 Match Balls.....	66
10 Jersey Colour Clashes.....	66
11 Advertising on Player Jerseys.....	66
12 Team Numbering.....	66
13 Team Naming.....	67
14 Penalty.....	67
15 Disputes and Interpretation	67

Appendices

1 Regulations Relating Solely to the Air New Zealand Cup	68
2 Regulations Relating Solely to the Heartland Championship	71
3 Regulations Relating Solely to the B Competition.....	75



1 COMPOSITION

- 1.1 The domestic interprovincial competitions are conducted by the NZRU on an invitation basis and there is no obligation for a Provincial Union to participate.
- 1.2 In the event that an Provincial Union's application to participate in the domestic competition ("Domestic Competition") is accepted by the NZRU, it is a condition of continued participation in the Domestic Competition that the Provincial Union comply with the terms of their application and the Participation Agreement as far as that relates to participation in the Domestic Competition.
- 1.3 The Domestic Competition will be played in two divisions:
 - a. Air New Zealand Cup; and
 - b. Heartland Championship.
- 1.4 The NZRU may, at its discretion, on an annual basis decide to establish a B Competition for Provincial Unions participating in the Air New Zealand Cup. If a B Competition is established, all Provincial Unions participating in the Air New Zealand Cup will be required to participate in the B Competition.

2 DEFINITIONS

- 2.1 In these Regulations, unless the context requires or indicates otherwise, the following definitions shall apply:

"Board" means the Board of the NZRU;

"Competitions Manual" means the manual published by the NZRU from time to time relating to the operation of the Domestic Competition;

"Finals Round" has the meaning set out in clauses 8–13 of Appendix 1 and clauses 14–21 of Appendix 2;

"NZRU Fixture" has the meaning set out in the *NZRU Regulations Relating to the Definition of an NZRU Fixture, the Order of Precedence and First Class Fixtures*;

"Home Union" has the meaning set out in clause 6.3;

"Home Match" means a match to be played at the venue specified in the Provincial Union's application for participation in the Domestic Competition;

"NZRU" means the New Zealand Rugby Union Incorporated;

"Provincial Union" means an Affiliated Union as defined in the NZRU Constitution;

"Visiting Union" has the meaning set out in clause 7.1.

3 FORMAT

- 3.1 The Air New Zealand Cup will be played in the format set out in Appendix 1 to these Regulations.
- 3.2 The Heartland Championship will be played in the format set out in Appendix 2 to these Regulations.
- 3.3 If played, the B Competition will be played in the format set out in Appendix 3 to these Regulations.

4 SCHEDULING AND CANCELLATION

- 4.1 The NZRU will set the dates, venues and times for all Domestic Competition matches.
- 4.2 The NZRU has the right to appoint a match as the main curtain-raiser for any Domestic Competition match.
- 4.3 All Domestic Competition matches during the Air New Zealand Cup or Heartland Championship are NZRU Fixtures.
- 4.4 Subject to clause 4.6, each Provincial Union participating in the Domestic Competition must play all matches that it is scheduled to play as directed by the NZRU pursuant to clause 4.1.



- 4.5 Subject to clause 4.6, if:
- a. A Domestic Competition match is not played on its scheduled day; and
 - b. In the opinion of the NZRU, a valid reason exists for that Domestic Competition match not being played on that day;
- the NZRU shall, in consultation with the Provincial Unions who were to have participated in the match and with the cooperation of those Provincial Unions, arrange for the match to be rescheduled on an alternative date (which is to be as soon as reasonably possible after the originally scheduled date) and, if required by the NZRU at an alternative venue.
- 4.6 If a Domestic Competition match is not played on its scheduled day and, in the opinion of the NZRU, no valid reason exists for that match not being played on that day, the NZRU may, in its discretion:
- a. Determine that one or both of the Provincial Unions who were to have participated in the match was responsible for the match not being played on that day; and
 - b. Impose any of the penalties set out in clause 14 of these Regulations on that Provincial Union or Unions.
- 4.7 If a Domestic Competition match is not played on its scheduled day, the NZRU may direct that the match is cancelled if:
- a. The result of that match would have no effect on determining the semifinalists (if relevant), or the finalists of that Division; and
 - b. both of the Provincial Unions who would have participated in the match agree to the match being cancelled; and
 - c. If a and b occur, the points for the match will be shared on the basis of two points to each team.
- 4.8 All Provincial Unions are required to ensure that all travel arrangements made for its Domestic Competition team allow for the arrival of the team with sufficient time to ensure that Domestic Competition matches are played at the scheduled date, time and venue.
- 4.9 All Provincial Unions are required to ensure that they have a home venue that meets the “Minimum Stadia Requirements” as set out in the Competition Manual available for the entire period of the Domestic Competition including any Finals Round. In the event that a Provincial Union advises the NZRU that it does not have a home venue available for a Home Match scheduled in accordance with clause 4.1 to the satisfaction of the NZRU the match will be moved at the NZRU’s discretion to:
- a. the home venue of the Visiting Union participating in the match; or
 - b. an alternative neutral venue as determined by the NZRU.

5 COMPETITION POINTS

- 5.1 Points for Domestic Competition matches will be awarded on the following basis:
- a. 4 points for a win;
 - b. 2 points for a draw;
 - c. 1 point for losing by 7 or fewer points; and
 - d. 1 point for scoring 4 or more tries.

6 REFEREES AND TOUCH JUDGES

- 6.1 The NZRU will appoint referees for all Domestic Competition matches.
- 6.2 The NZRU will appoint both touch judges and the television match official for all Finals Round matches.
- 6.3 The Provincial Union for whom the Domestic Competition match is a Home Match (“the Home Union”) will appoint two suitably qualified and experienced referees as touch judges for Round Robin or Pool Round matches and shall identify one of those touch judges as



the reserve referee for that match.

- 6.4 The Home Union will appoint other match officials as may be directed by the NZRU from time to time.

7 FUNDING

- 7.1 The NZRU will provide travel for the team of the Provincial Union for whom the Domestic Competition match is not a Home Match ("the Visiting Union") as follows:

- a. Except as provided for in (c) below, air travel for the Visiting Union from the most appropriate departure airport (as determined by the NZRU in consultation with the Visiting Union) to the most appropriate airport close to the venue of the match.
- b. Coach transport to and from:
 - i. The home base departure point, where the airport is outside the home base city or town.
 - ii. The arrival point, where the match is to be played outside the environs of the arrival city or town.
- c. Where (in the opinion of the NZRU) air travel is impractical, coach transport from the home base to the venue. Guidelines will be provided in the Competition Manual.

- 7.2 All other expenses associated with the Visiting Union's participation in Round Robin or Pool Round matches are the responsibility of the Visiting Union.

- 7.3 Gate charges for Round Robin or Pool Round matches will be determined at the discretion of the Home Union.

- 7.4 Charges for Finals Round matches will be determined by the NZRU.

8 COMPLIMENTARY TICKETS

- 8.1 Each Union will allocate complimentary tickets to the following with the number to be prescribed from time to time in the Competition Manual:

- a. To the Visiting Union.
- b. To the NZRU for distribution to the NZRU's sponsors and officials or other persons nominated by the NZRU.

9 MATCH BALLS

- 9.1 Only balls manufactured or supplied by the NZRU's official supplier of rugby footballs are to be used for Domestic Competition matches.

10 JERSEY COLOUR CLASHES

- 10.1 Where the NZRU determines a jersey colour clash will eventuate in a Domestic Competition match, the Visiting Team will play in its alternative strip.

11 ADVERTISING ON PLAYER JERSEYS

- 11.1 Any advertising, sponsor or manufacturer marks on playing jerseys must comply with:

Directions made by the NZRU (in accordance with IRB Regulations), with respect to size, location and number of marks.

- 11.2 Provincial Unions are required to affix the Domestic Competition logo, as provided by the NZRU, to the centre bottom of the right hand sleeve of their team's playing jersey including any alternate jersey. Each Provincial Union will provide the NZRU with an example of its Team's playing jersey each year for promotional and display purposes.



12 TEAM NUMBERING

- 12.1 All playing jerseys must be numbered according to generally accepted Rugby practice and



in particular in the manner provided in Regulation 15.1 of the IRB Regulations Relating to the Game.

13 TEAM NAMING

13.1 Provincial Unions are required to announce publicly 48 hours prior to the kick-off of any Domestic Competition match the 15 players who will start that match and their respective positions together with the seven replacements/substitutes for the match.

14 PENALTY

14.1 The Board has jurisdiction to determine whether or not there has been any breach of these Regulations, the *NZRU Player Movement Regulations* or the *NZRU Player Eligibility Regulations*. For the avoidance of doubt, any breach of the *NZRU Salary Cap Regulations* will be dealt with in accordance with the relevant provisions of the *NZRU Salary Cap Regulations* and not these Regulations.

14.2 Where the Board considers a breach of the Regulations referred to in 14.1 has occurred it may impose any penalty as, in its discretion it considers appropriate, including one or more of the following:

- a. A financial penalty (which may, in the case of a Provincial Union in breach of clause 4.6, be paid in whole or in part to the Provincial Union whose team were available to play);
- b. A deduction in points awarded to a Provincial Union on the points table for the Domestic Competition; and/or
- c. Where the Board considers that there are exceptional circumstances and that a fair result requires a reallocation of points, any points deducted from a Provincial Union may be awarded to another Provincial Union or Provincial Unions on the points table for the Domestic Competition;
- d. The awarding of points to the Provincial Union not at fault;
- e. Expulsion from the Domestic Competition.

15 DISPUTES AND INTERPRETATION

15.1 Subject to Rule 10 of the NZRU Constitution, any dispute as to:

- a. The meaning or interpretation of these Regulations, or
- b. As to any matter or questions relating to matches played as part of the Domestic Competition but not provided for in these Regulations,

will be determined by the NZRU.

Appendix 1 • Regulations Relating Solely to the Air New Zealand Cup

ENTRY

1. Entry to the Air New Zealand Cup is at the discretion of the Board.
2. Continued participation in the Air New Zealand Cup is at the discretion of the Board acting reasonably and is subject to ongoing compliance with the terms of application and the Participation Agreement as far as it relates to the Domestic Competition.
3. The Air New Zealand Cup will contain up to 14 Provincial Unions as determined by the Board.

FORMAT

4. The Air New Zealand Cup will be played:
 - a. In a round robin format (“Round Robin”) as set out in clauses 5 and 6 of this Appendix; followed by
 - b. Semifinals and final (“the Finals Round”) as set out in clauses 8-13 of this Appendix.

ROUND ROBIN

5. The Round Robin will consist of each Provincial Union playing:
 - a. 13 matches against all other Provincial Unions in the competition over 13 consecutive weeks; and
 - b. Six home and seven away or seven home and six away matches.
6. The NZRU will be responsible for determining the draw for the Round Robin including the order of matches and the allocation of home and away matches.

TIES AT CONCLUSION OF ROUND ROBIN

7. In the event that two or more Provincial Unions in the Air New Zealand Cup finish the Round Robin with the same number of competition points the finishing positions of the Provincial Unions will be determined in accordance with the following criteria, which will be applied in the order in which they appear below until the tie is broken:
 - a. Where three or more Provincial Unions are tied:
 - i. the tied Provincial Union with the most wins against the other tied Provincial Unions in the Round Robin shall have the higher position.
 - ii. if three or more Provincial Unions have an equal number of wins against the other tied Provincial Unions, the tied Provincial Union which has the higher points difference in the Round Robin will have the higher position.
 - b. Where any two Provincial Unions are tied:
 - i. The winner of any Round Robin match played between the two Provincial Unions in that year will have the higher position.
 - ii. The Provincial Union which has the higher points difference in the Round Robin will have the higher position.
 - c. If a tie cannot be broken by the criteria set out in subclauses (a) and (b) of this clause:
 - i. The Provincial Union that scored the most tries in the Round Robin shall have the higher position.
 - ii. The toss of a coin will be used.



FINALS RANKING

8. The four Provincial Unions with the highest number of competition points at the completion of the Round Robin will proceed to the Finals Round. In the event that two or more Provincial Unions have the same number of competition points, that tie will be broken in accordance with clause 7 of this Appendix. The remaining 10 Provincial Unions will take no further part in the Air New Zealand Cup.
9. The four Provincial Unions with the highest number of competition points at the completion of the Modified Round Robin will be allocated a Finals Ranking from 1 to 4, as follows:.

Finals Ranking	
1	Provincial Union with the highest number of competition points at the completion of the Round Robin
2-4	Provincial Unions with the next-highest number of competition points at the completion of the Round Robin in descending order from 2 to 4

FINALS ROUND

10. Based on the Finals Ranking, the semifinals will be played as follows:
 - a. 1 plays 4;
 - b. 2 plays 3;
11. The winning semifinalists will play each other in the final. The winning finalist will be awarded the Air New Zealand Cup.

VENUES FOR FINALS ROUND

12. The venue for all Finals Round matches will be the home venue of the Provincial Union with the higher Finals Ranking of the two teams participating in that match. This is subject to the NZRU having the right to change the venue if circumstances necessitate it.

TIES IN FINALS ROUND

13. In the event that teams are tied at the end of a semifinal or final match, the winner will be determined by the following criteria, which shall be applied in the order in which they appear until a result is determined:
 - a. The winner following a further ten (10) minutes of extra time each way.
 - b. The team scoring the most tries in the match.
 - c. The winner of any Round Robin match played in that year between the two teams.
 - d. The team having the higher points difference in the Round Robin.
 - e. In the case of a semifinal, the winner determined by the toss of a coin.
 - f. In the event that teams are tied at the end of a final and the winner is unable to be determined by applying criteria (a) to (d) above, the teams will be declared joint winners of the Air New Zealand Cup.

DISTRIBUTION OF GATE TAKINGS

14. The Visiting Union for a semifinal or final match of the Air New Zealand Cup will be entitled to receive from the Home Union:
 - a. a payment to cover the travel and accommodation expenses for the match; and
 - b. a share in the gross ticket receipts for that match;



with the amounts to be determined by the NZRU from time to time and set out in the Competition Manual.

15. The NZRU reserves the right to audit the ticket receipts of Home Unions for all Finals Round matches and the Unions must provide the NZRU with access to all relevant records and such assistance as the NZRU may reasonably require for this purpose.



Appendix 2 • Regulations Relating Solely to the Heartland Championship

ENTRY

1. Entry to the Heartland Championship is at the discretion of the NZRU.
2. Continued participation in the Heartland Championship is at the discretion of the NZRU acting reasonably and is subject to on going compliance with the terms of application and the Participation Agreement as far as it relates to the Domestic Competition.
3. The Heartland Championship will contain up to 12 Provincial Unions as determined by the Board.

MEADS CUP AND LOCHORE CUP

4. The Meads Cup and the Lochore Cup will be contested in the Heartland Championship.
5. If the holder of either the Meads Cup or the Lochore Cup is not a participant in the Heartland Championship, that Cup will be returned to the NZRU.

FORMAT

6. The Heartland Championship will be played:
 - a. In two rounds of pool play (“Pool Rounds”); followed by
 - b. Semifinals and finals (“the Finals Rounds”) in the Meads Cup Pool and the Lochore Cup Pool.

SEEDING

7. The seedings for the Heartland Championship will be allocated as follows:

1st seed	The winner of the final of the Meads Cup in the immediately preceding year.
2nd seed	The loser of the final of the Meads Cup in the immediately preceding year.
3rd seed	The losing semifinalist in the Meads Cup in the immediately preceding year which, in that year, had the higher aggregate number of competition points in the Pool Rounds of the losing semifinalists.
4th seed	The losing semifinalist in the Meads Cup in the immediately preceding year which, in that year, had the lower aggregate number of competitions points in the Pool Rounds of the losing semifinalists.
5th and 6th seeds	The remaining Provincial Unions that played in the Meads Cup in the immediately preceding year, ranked according to their aggregate number of competition points in that year
7th seed	The winner of the final of the Lochore Cup in the immediately preceding year.
8th seed	The loser of the final of the Lochore Cup in the immediately preceding year.
9th seed	The losing semifinalist in the Lochore Cup in the immediately preceding year which, in that year, had the higher aggregate number of competition points in the Pool Rounds of the losing semifinalists.
10th seed	The losing semifinalist in the Lochore Cup in the immediately preceding year which, in that year, had the lower aggregate number of competition points in the Pool Rounds of the losing semifinalists.
11th and 12th seeds	The remaining Provincial Unions that played in the Lochore Cup in the immediately preceding year, ranked according to their aggregate number of competition points in the Pool Rounds in that year.



POOL ROUNDS

ROUND ONE

8. Round One of the Pool Rounds will be played in a round robin format in two, nationally seeded pools as follows:
 - a. Pool A will consist of those Provincial Unions seeded 1st, 4th, 5th, 8th, 9th, and 12th in accordance with clause 7 of this Appendix. The Provincial Unions seeded 1st, 4th and 5th in Pool A will each have three home games in Round One, with the 8th, 9th, and 12th seeds each having two home games in Round One.
 - b. Pool B will consist of those Provincial Unions seeded 2nd, 3rd, 6th, 7th, 10th and 11th in accordance with clause 7 of this Appendix. The Provincial Unions seeded 2nd, 3rd and 6th in Pool B will each have three home games in Round One, with the 7th, 10th, and 11th seeds each having two home games in Round One.
9. Round One will be played over a period of five weeks with each Provincial Union playing every other Provincial Union in its Pool.

ROUND TWO

10. Round Two of the Pool rounds will be played over three weeks in two pools as follows:
 - a. The Meads Cup Pool, consisting of the three Provincial Unions in Pool A with the most competition points in Round One and the three Provincial Unions in Pool B with the most competition points in Round One;
 - b. The Lochore Cup Pool, consisting of the remaining Provincial Unions in Pool A and Pool B.
11. In the Meads Cup Pool, each Provincial Union will play the Provincial Unions in the pool that it did not play in Round One. Home games in the Meads Cup Pool will be allocated using the following criteria:
 - a. The Provincial Unions placed 1st in Pool A and Pool B based on competition points in Round One will have two home games. When these two teams play each other, the team that had the most competition points in Round One will have the Home Match. Ties will be broken in accordance with clause 13 of this Appendix.
 - b. Of the Provincial Unions placed 2nd in Pool A and Pool B, the Provincial Union which has the higher aggregate competition points in Round One will have two home games. Ties will be broken in accordance with clause 13 of this Appendix.
 - c. All other Provincial Unions in the Meads Cup Pool will have one home game.
12. In the Lochore Cup Pool, each Provincial Union will play the Provincial Unions in the pool that it did not play in Round One. Home games in the Meads Cup Pool will be allocated using the following criteria:
 - a. The Provincial Unions placed 4th in Pool A and Pool B based on competition points in Round One will have two home games. When these two teams play each other, the team that had the most competition points in Round One will have the Home Match. Ties will be broken in accordance with clause 13 of this Appendix.
 - b. Of the Provincial Unions placed 5th in Pool A or Pool B, the Provincial Union which has the higher aggregate competitions points in Round One will have two home games. Ties will be broken in accordance with clause 13 of this Appendix.
 - c. All other Provincial Unions in the Lochore Cup Pool will have one home game.

TIES AT CONCLUSION OF ROUNDS ONE OR TWO

13. In the event that two or more Provincial Unions in the Heartland Championship finish either Round One or Round Two with the same number of aggregate points, the finishing positions of the Provincial Unions at the conclusion of that Round will be determined in accordance with the following criteria, which will be applied in the order in which they appear below until a result as to the positions of the relevant Provincial Unions is determined:
 - a. Where any two Provincial Unions within the same Pool are tied, the winning Provincial Union of the most recent Pool Round match played between the two Provincial Unions



in that year shall have the higher position.

- b. Where three or more Provincial Unions within the same Pool are tied, the tied Provincial Union with the most wins in that year against the other tied Provincial Unions shall have the highest position.
- c. The Provincial Union having the higher points difference in the relevant Pool Round shall have the higher position.
- d. The Provincial Union that scored the most tries in the relevant Pool Round shall have the higher position.
- e. By the toss of a coin.

FINALS ROUND

14. The four Provincial Unions with the highest cumulative points in the Pool Rounds that are competing in the Meads Cup Pool will proceed to the Meads Cup Finals.
15. The four Provincial Unions with the highest cumulative points in the Pool Rounds that are competing in the Lochore Cup Pool will proceed to the Lochore Cup Finals.

MEADS CUP FINALS

16. The semifinals in the Meads Cup will be played as follows:
 - a. The Provincial Union in the Meads Cup semifinals with the highest cumulative points in the Pool Rounds will play the Provincial Union in the Meads Cup semifinals with the lowest cumulative points in the Pool Rounds; and
 - b. The Provincial Union in the Meads Cup semifinals with the second-highest cumulative points in the Pool Rounds will play the Provincial Union in the Meads Cup semifinals with the second-lowest cumulative points in the Pool Rounds.
17. The winning semifinalists will play each other in the Meads Cup final. The winning finalist will be awarded the Meads Cup.

LOCHORE CUP FINALS

18. The semifinals in the Lochore Cup will be played as follows:
 - a. The Provincial Union in the Lochore Cup semifinals with the highest cumulative points in the Pool Rounds will play the Provincial Union in the Lochore Cup semifinals with the lowest cumulative points in the Pool Rounds
 - b. The Provincial Union in the Lochore Cup semifinals with the second-highest cumulative points in the Pool Rounds will play the Provincial Union in the Lochore Cup semifinals with the second-lowest cumulative points in the Pool Rounds.
19. The winning semifinalists will play each other in the Lochore Cup final. The winning finalist will be awarded the Lochore Cup.

VENUES FOR FINALS ROUND

20. The venue for all Finals Round matches will be the home venue of the Provincial Union with the higher cumulative points in the Pool Rounds of the two teams participating in that match. Ties will be broken in accordance with clause 13 of this Appendix.

TIES IN FINALS PLAY

21. In the event that teams are tied at the end of a semifinal or final match, the winner will be determined by the following criteria, which shall be applied in the order in which they appear until a result is determined:
 - a. The winner following a further ten (10) minutes of extra time each way.
 - b. The team scoring the most tries in the match.
 - c. The winner of the most recent Pool Round match played in that year between the two



teams.

- d. The team having the higher points difference in the Pool Rounds.
- e. In the case of a semifinal, the winner determined by the toss of a coin.
- f. In the event that teams are tied at the end of a final and the winner is unable to be determined by applying criteria (a) to (d) above, the teams will be declared joint winners of the Meads or Lochore Cup.

DISTRIBUTION OF GATE TAKINGS

- 22. The NZRU will pay an amount to the Visiting Union competing in a semifinal or final match in either the Meads Cup and Lochore Cup, with the amount to be determined by the NZRU from time to time and set out in the Competition Manual.
- 23. The NZRU reserves the right to audit the ticket receipts of Home Unions for all Finals Round matches and the Unions must provide the NZRU with access to all relevant records and such assistance as the NZRU may reasonably require for this purpose.



Appendix 3 • Regulations Relating Solely to the B Competition

ENTRY

1. If played, the B Competition will be made up of teams from each of the Provincial Unions participating in the Air New Zealand Cup.

FORMAT

2. The B Competition will be played in two seeded pools, followed by semifinals and a final.

SEEDING

3. Seedings for the B Competition will be determined on the basis of the finishing position of teams in the last B Competition.

POOL ROUND

4. The Pool Round will be played in a round-robin format in two, seeded pools as follows:
 - a. Pool A will consist of those Provincial Unions seeded 1st, 4th, 5th, 8th, 9th, 11th and 13th in accordance with clause 3 of this Appendix.
 - b. Pool B will consist of those Provincial Unions seeded 2nd, 3rd, 6th, 7th, 10th, 12th and 14th in accordance with clause 3 of this Appendix.
5. The Pool Round will be played over a period of seven weeks with each Provincial Union playing every other Provincial Union in its Pool.

TIES AT CONCLUSION OF POOL ROUND

6. In the event that two or more Provincial Unions finish the Pool Round with the same number of aggregate points on the points table, the finishing positions of the Provincial Unions at the conclusion of that Round will be determined in accordance with the following criteria, which will be applied in the order in which they appear until a result as to the positions of the relevant Provincial Unions is determined:
 - a. Where any two Provincial Unions within the same Pool are tied, the winning Provincial Union of the most recent Pool Round match played between the two Provincial Unions in that year shall have the higher position;
 - b. Where three or more Provincial Unions within the same Pool are tied, the tied Provincial Union with the most wins in that year against the other tied Provincial Unions shall have the highest position;
 - c. The Provincial Union having the higher points difference in the Pool Round shall have the higher position;
 - d. The Provincial Union that scored the most tries in the Pool Round shall have the higher position;
 - e. By the toss of a coin.

SEMIFINALS

7. The two Provincial Unions with the highest cumulative points in each Pool will proceed to the semifinals.
8. The Provincial Union with the highest number of competition points in Pool A will play the Provincial Union with the second-highest number of competition points in Pool B. The venue for this match will be the home venue of the Pool A team.
9. The Provincial Union with the highest number of competition points in Pool B will play the Provincial Union with the second-highest number of competition points in Pool A. The venue for this match will be the home venue of the Pool B team.



FINAL

10. The winning semifinalists will proceed to the final.
11. The venue for the final will be the home venue of the Provincial Union with the higher number of competition points in the Pool Round of the two teams participating in that match. Ties will be broken in accordance with clause 6 of this Appendix.

TIES IN FINALS PLAY

12. In the event that teams are tied at the end of a semifinal or final match, the winner will be determined by the following criteria, which shall be applied in the order in which they appear until a result is determined:
 - a. The winner following a further ten (10) minutes of extra time each way.
 - b. The team scoring the most tries in the match.
 - c. The winner of the most recent Pool Round match played in that year between the two teams.
 - d. The team having the higher points difference in the Pool Round.
 - e. In the case of a semifinal, the winner determined by the toss of a coin.
 - f. In the event that teams are tied at the end of a final and the winner is unable to be determined by applying criteria (a) to (d) above, the teams will be declared joint winners of the B Competition.



NEW ZEALAND RUGBY UNION
Competition Regulations Handbook • 2009
Ranfurly Shield



NEW ZEALAND RUGBY UNION

Regulations for the Ranfurly Shield

1. The Ranfurly Shield (the “Shield”) shall be a challenge open to all Affiliated Unions.
2. The Affiliated Union from time to time holding the Shield (the “holder”) shall hold it subject to the rights of challenge by an Affiliated Union in accordance with these Regulations.
3. The references in Regulations 5 to 12 inclusive to the “holder” are references to the holder of the Shield at the beginning of the relevant Rugby season.

CONDITIONS FOR ALL CHALLENGE MATCHES

4. (a) The holder shall not be required to but may at its sole discretion play any challenge match before the first day of July.
(b) Unless the consent of the Union is obtained, no challenge match shall be played during the Pool Rounds of the Domestic Competition by the holder against an Affiliated Union which is in a different division of the Domestic Competition from that of the holder.
(c) No challenge match shall be played after the last day of the Pool Rounds of the Domestic Competition.
5. All home Round matches in the Pool Rounds of the Domestic Competition played by the holder shall be challenge matches (“mandatory challenges”).
6. Affiliated Unions wishing to play a challenge match, other than a mandatory challenge, must give the holder notice in writing by no later than the 31st day of October in the preceding year (“non-mandatory challenges”).
7. Provided sufficient non-mandatory challenges have been lodged then;
 - (a) If the holder is in the Premier Division of the Domestic Competition, it shall accept not less than two non-mandatory challenges from Affiliated Unions not in the Premier Division one of which must be the holder of the Meads Cup.
 - (b) If the holder is in Division One of the Domestic Competition it shall accept not less than one non-mandatory challenge from an Affiliated Union in the Premier Division of the Domestic Competition.

If a Premier Division holder has only received one non-mandatory challenge as set out above it shall accept that non-mandatory challenge received from an Affiliated Union not in the Premier Division.

8. The holder must, not later than the 15th day of November in the year the non-mandatory challenges are received:
 - (a) give notice to the Union and all Affiliated Unions who have lodged non-mandatory challenges of:
 - (i) the non-mandatory challenges which have been accepted; and
 - (ii) the dates on which the non-mandatory challenge matches are to be played as agreed with the Affiliated Unions concerned (or failing such arrangement, the date fixed by the Union).
9. All challenge matches shall be played on a ground of the holder unless the holder, at its option, agrees to play a challenge match on a ground of the challenging Affiliated Union.
10. The Union shall appoint the referee for all challenge matches.
11. For the avoidance of doubt, all challenges that were accepted by the holder prior to the 15th of November 2005 in respect of the 2006 season shall be deemed to be challenge matches for the purposes of these regulations.



ADDITIONAL CONDITIONS WHERE THE HOLDER IS DEFEATED PART WAY THROUGH THE SEASON

12. All matches to be played by the new holder against other Affiliated Unions on any ground of the holder, up to and including the final weekend of the Pool Rounds of the Domestic Competition, are challenge matches.
13. An Affiliated Union which did not previously have a match arranged with the new holder on a ground of the holder may within six days of the new holder winning the Shield, notify the holder and the Union of its challenge for the Shield.
14. The new holder may accept additional challenges lodged in accordance with Regulation 13 of these Regulations. However in determining which additional challenges are to be accepted, the new holder shall give priority to Affiliated Unions which had a challenge accepted by the holder of the Shield at the beginning of the season and whose challenge remained unplayed. The new holder shall declare within eight days of winning the Shield which additional challenges lodged under the provisions of Regulation 13 it has accepted.
15. If the holder is defeated but regains the Shield in the same season, then any challenges previously accepted by the Affiliated Union for dates subsequent to the date on which it regained the Shield shall be automatically reinstated.

EXPENSES

16. A challenging Affiliated Union which is in a different Division of the Domestic Competition to that of the holder, shall be eligible to receive a special travel grant from the holder as detailed below, provided however that this grant shall not exceed 10 per cent of the gross ticket receipts for that match.

0 to	100km	\$1,000 + GST
101 to	250km	\$2,000 + GST
251 to	500km	\$3,000 + GST
501 to	750km	\$4,000 + GST
751 to	1,000km	\$5,000 + GST
Over	1,000km	\$6,000 + GST

DISPUTES AND INTERPRETATION

18. The Union, subject to Rule 29 of the Rules of the Union, shall decide any dispute as to the meaning or interpretation of these Regulations or to any other matter or question not provided for in these Regulations.





NEW ZEALAND RUGBY UNION
Competition Regulations Handbook • 2009

**Regulations Relating to the Definition
of an NZRU and First Class Fixture
and the Order of Precedence**



NEW ZEALAND RUGBY UNION

Regulations Relating to the Definition of an NZRU and First Class Fixture and the Order of Precedence

NZRU FIXTURES

1. NZRU Fixtures are matches where the NZRU has a direct involvement including but not limited to:
 - (a) All Black matches wherever played
 - (b) Matches in official tours by visiting National teams
 - (c) Matches involving any other New Zealand Representative Team
 - (d) Trial matches for all New Zealand Representative Teams
 - (e) Rugby Super 14 matches
 - (f) Ranfurly Shield matches
 - (g) Air New Zealand Cup matches
 - (h) Heartland Championship matches
 - (i) Women's Competition matches
 - (j) Such other matches as the NZRU Board may from time to time determine.

ORDER OF PRECEDENCE

2. The Order of Precedence of teams and assemblies is as follows, provided that the Board may from time to time include additional teams or vary the order;
 - (a) The Senior National Representative Team (ie The All Blacks)
 - (b) The Next Senior National Representative Team (ie The Junior All Blacks)
 - (c) The New Zealand Sevens Team competing in the Rugby World Cup Sevens Tournament, Olympic or Commonwealth Games
 - (d) New Zealand Trials for the Senior National Representative Team
 - (e) The New Zealand Maori Team
 - (f) Rugby Super 14 Teams
 - (g) The New Zealand Sevens Team
 - (h) The New Zealand Under 20 Team and Trial Teams
 - (i) Teams playing Ranfurly Shield matches
 - (j) Teams playing in the Air New Zealand Cup matches
 - (k) Teams playing in the Heartland Championship
 - (l) New Zealand Heartland XV Team
 - (m) Affiliated Union Senior Representative Teams playing matches against teams of equivalent or higher status
 - (n) Affiliated Union Senior Representative Teams playing matches against another Affiliated Union's Next Senior Representative Team.
 - (o) Teams playing in the "B" competition
 - (p) Regional Maori Representative Teams playing in matches against other Regional Maori Representative Teams
 - (q) The New Zealand Universities Team playing against Affiliated Union Senior Representative Teams or teams of equivalent or higher status



- (r) The New Zealand Defence Force Representative Team playing against Affiliated Union Senior Representative Teams or teams of equivalent or higher status
3. In the event that there is a potential clash of scheduling between two or more of the teams listed in clause 2 NZRU High Performance will have the discretion to vary the Order of Precedence in relation to an individual player taking into account the following factors:
 - (a) What is in the best development and welfare interests of the individual player;
 - (b) The views of the respective team coaches;
 - (c) Any identified positional strengths and weaknesses in the respective teams;
 - (d) Any other relevant factors.

FIRST CLASS FIXTURES – MENS RUGBY

4. To qualify as a First Class Fixture, a match must be played strictly within the Laws of the Game.
5. Subject to clause 4, matches involving the men's teams set out below shall automatically be accorded First Class Fixture status:
 - (a) The Senior National Representative Team (ie The All Blacks)
 - (b) The Next Senior National Representative Team (ie The Junior All Blacks)
 - (c) New Zealand Trials for the Senior National Representative Team
 - (d) The New Zealand Maori Team
 - (e) New Zealand Heartland XV Team
 - (f) Rugby Super 14 Teams
 - (g) The New Zealand Under 20 Team
 - (h) Teams playing Ranfurly Shield matches
 - (i) Teams playing in Air New Zealand Cup matches
 - (j) Teams playing in Heartland Championship matches
 - (k) Matches in official tours by visiting National teams
 - (l) Such other matches as the NZRU Board may from time to time determine
6. Subject to clause 4, matches involving the men's teams set out below may be accorded First Class Fixture Status at the discretion of the NZRU. The NZRU will only exercise this discretion where it has received an application from the relevant Rugby playing organisation which hosted the match made within 14 days of the match being played, stating the names of the players for both teams on official teamsheets (including match officials and points scoring details) and the reasons why the match should be classified as a First Class Fixture:
 - (a) Provincial Union Senior Representative Teams playing matches against teams of equivalent or higher status
 - (b) Provincial Union Senior Representative Teams playing matches against another Provincial Unions Next Senior Representative Team
 - (c) Regional Maori Representative Teams playing in matches against other Regional Maori Representative Teams
 - (d) The New Zealand Universities Team playing against a Provincial Unions Senior Representative Teams or teams of equivalent or higher status
 - (e) The New Zealand Defence Force Representative Team playing against Provincial Unions Senior Representative Teams or teams of equivalent or higher status



FIRST CLASS FIXTURES – WOMEN’S RUGBY

7. To qualify as a First Class Fixture, a match must be played strictly within the Laws of the Game.
8. Subject to clause 7, matches involving the women’s teams set out below shall automatically be accorded First Class Fixture status:
 - (a) The Senior National Representative Team (ie The Black Ferns)
 - (b) The Next Senior National Representative Team
 - (c) New Zealand Trials for the Senior National Representative Team
 - (d) Teams playing for the Provincial Union Senior Representative Team in the National Women’s Rugby Competition
 - (e) Matches in official tours by visiting National teams
 - (f) Such other matches as the NZRU Board may from time to time determine

