

# FLORIDA



**College Catalog**  
**"Strong in the Scriptures"**  
**2005-2006**

---

1011 Bill Beck Blvd.  
Kissimmee, Florida 34744

407-847-8966  
FAX 321-206-2007

1-888-GO-TO-FCC (For Financial Aid and Admissions only)

*The information concerning programs, procedures, requirements, standards, and fees is subject to change without notice. The student has the responsibility to be aware of the information contained in this catalog and any additions or corrections thereto as they are announced through various school media. The information in this catalog is disseminated as a courtesy to prospective students and does not constitute a contract between the student and Florida Christian College.*

*A Message from the President . . .*

The choice of a college is one of the most important decisions of your life. That decision alone may form the basis of many other choices you will make later – a life purpose, a life style, a life mate and life long friends. Your consideration of Florida Christian College is commendable. At Florida Christian College you will find the elements you need to live God’s calling in your life.

Located in Kissimmee, Florida (in the greater Orlando area), Florida Christian College enjoys the sun filled days of a sub-tropical climate and the excitement of a major metropolitan experience. With the tourists attracted to this area, part-time jobs are plentiful. The ethnic diversity of the area provides experience in working with people from all kinds of backgrounds.

Christian values characterize Florida Christian College. Administrators, faculty and staff must espouse and exhibit Christian beliefs. The Bible forms the centerpiece of the curriculum. Family Worship Hour attendance and Discipleship Group participation as well as Christian service are required of all students. In addition, the student/faculty ratio is a low 13-1, which gives students great access to personal mentoring from men and women of great spiritual stature. As a student at Florida Christian College, you can develop living skills in a safe and encouraging atmosphere.

This is a college of higher education. The academic expectations are high. Our professors have strong academic credentials. Florida Christian College is accredited by the Association for Biblical Higher Education and the Southern Association of Colleges and Schools. The accrediting bodies ensure the continued excellence of education at Florida Christian College. You will be challenged and prepared to give your best to God and His service in this world.

As you can see, the name Florida Christian College defines its location, its values, and its purpose.

This catalog will answer most of your questions about the college. Please feel free to check the college website, write, or visit. We would love to welcome you to become part of God’s family in ministry.

Harold Armstrong  
President

## Table of Contents

Description	Page
Distinctives .....	4
Our Philosophy .....	4
Our Position .....	4
Our History .....	5
Our Campus .....	5
Our Purpose .....	5
Our Objectives .....	6
Our Standing .....	6
Our Location .....	7
Admissions .....	8
Student Life .....	11
Personnel .....	22
Board of Trustees .....	22
Florida Christian College Foundation .....	23
College Administration .....	25
College Faculty .....	26
Academic Programs .....	30
Associate Program .....	31
Bachelor Programs .....	33
Bachelor of Science in Bible .....	37
Bachelor of Art in Bible and Humanities .....	39
Bachelor Programs in Christian Ministries .....	42
Bachelor Programs in Christian Education .....	63
Bachelor of Theology .....	75
Academic Internships .....	77
Alternative Degree Completion Program .....	80
Correspondence Courses .....	84
Community Music School .....	85
Academic Policy .....	86
Course Descriptions .....	97
ADC (Alternative Degree Completion) Course Descriptions .....	99
Division of Bible .....	103
Humanities Division .....	107
Ministry Division .....	113

## ***Distinctives***

When you come to the campus of FCC, you will notice the educational environment at this college is different from any you have experienced before. Several factors define FCC's uniqueness.

## ***Our Philosophy***

The educational philosophy of FCC sets this college apart from state-supported schools and from most private and church-related institutions. Florida Christian College is a Bible College established to provide training for vocational and non-vocational ministry in the Church. The education offered at Florida Christian College is based on the belief that the Bible is the full, final, and inerrant Word of God. The Divine message of the Bible can be understood only by the application of sound principles of study and interpretation. The Scripture is the source of knowledge concerning eternal and spiritual matters, and it tells the origin of the world, and the purpose and function of the natural order. Because that is true, the Bible is the foundation of all sound education.

By its very nature and content, the Word of God encourages in a student the desire for breadth, maturity, and integrity in all academic pursuits. God expects his children to learn about his Word and his world. Beyond intellectual growth, however, quality education demands spiritual development, behavioral change, and the practical use of acquired skills.

The FCC curriculum offers a range of courses that meets the special needs of those students who aspire to church-related vocations, as well as the general need of all students to learn what enables them to live dynamic Christian lives. All students have a double major, in Bible and ministry; while the student chooses a ministry major. The Bible program and Ministry programs are outlined in the Programs section of this catalog.

## ***Our Position***

The doctrinal position of FCC sets this college apart in the state of Florida. The policies and program of the college represent the general belief and practice of the Christian Churches and Churches of Christ, historically known as the Restoration Movement. On many points of doctrine we stand on common ground with evangelical Protestantism, such as . . .

1. The Bible is the inspired Word of God and the infallible rule of faith and practice.
2. The virgin birth and divinity of Jesus.
3. The bodily resurrection of Jesus and the promise of his return.
4. The Church as the God-appointed Body of Christ on earth.

In keeping with our unique heritage, however, the college seeks to restore Biblical truth. Some of the more important areas in which we seek to restore New Testament Christianity are:

1. Rational-moral conversion and regeneration under the power of the all-sufficient Word of God.
2. Salvation by faith, as opposed to salvation by experience.
3. Baptism (immersion) into Christ for the remission of sins and the gift of the Holy Spirit.
4. Obedience to the ancient order of things in regard to such matters as the oversight of the local church and the observance of the Lord's Supper.

## ***Our History***

After many months of prayer and planning, Central Florida Bible College began with a Freshman class of thirty-two students in September, 1976. The College utilized the facilities of First Christian Church in Orlando. President John Hasty led the College for the first four years. During those years CFBC received its original license from the Florida State Board of Independent Colleges and Universities. In the fall of 1979, the Clifford Chapman family in Kissimmee donated a forty-acre tract of land for campus development. A unique feature of the program during those early years was a senior trip to the Holy Land. Twenty-four seniors received diplomas in the first commencement of June 1980.

Dr. Marion Henderson was inaugurated as the second chief executive of the College in February 1981. During his tenure as President, the College made the transition to its permanent campus in Kissimmee. With the move to the new campus came a change in name to Florida Christian College. In October 1985, FCC was granted membership in the Accrediting Association of Bible Colleges. Dr. A. Wayne Lowen was inaugurated in 1987 and served as the third President.

On August 24, 2002, Harold Armstrong was inaugurated as the fourth chief executive officer of Florida Christian College

## ***Our Campus***

**Bezell Hall** (1998). Six-plex student apartment building.

**Brough Music Wing** (1998). A wing of the Chapman Center that houses the music department of the College.

**Chapman Center** (1985). This multi-purpose building was constructed in 1985 and remains to be the center of college operations.

**Foundation Hall** (1985). Foundation Hall is a 14-plex apartment building built as one of three first buildings on the Kissimmee campus and financed with a no-interest loan from the FCC Foundation.

**Library** (1994, 2001). The Library building is to be built in three phases. Two of the phases are completed. The building houses the college's collection that is made up of books, journals, electronic learning resources, and computer resources for student use.

**Packer Hall** (1994). A four-plex apartment building, that contains four apartments and a laundry. One apartment includes the office of the Residence Director.

**Roger Chambers Hall** (1989). This is a student apartment building that has thirteen townhouses and is named in honor of Dr. Roger Chambers.

**Tribble Student Union** (1990). The student life building is the location of the Student Life Offices, a large general meeting area, a small kitchen, student mailboxes, and a weight room.

**Trulock Hall** (1985). The Trulock Hall is a 14-plex apartment building built as one of three first buildings on the Kissimmee campus. Later, the building was named in honor of LeRoy Trulock, a former trustee and friend of the college.

## ***Our Purpose***

The Articles of Incorporation set forth the purpose of FCC in the following words:

The purpose of Florida Christian College is to conduct a course of study to educate men and women for Christian service, to provide a program of instruction on the college level, to grant appropriate degrees, and to serve as a resource to the churches, especially in Florida.

### ***Expanded Statement of Purpose***

This statement of purpose contains several implications. First, the curriculum and atmosphere of FCC is conducive to positive Christian living. All professed Christians can profit from the FCC experience. The college, however, is oriented toward preparing men and women for church-related vocations. Second, while the program at FCC has attracted students from throughout the country, the college designs its programs with a priority to meet the needs of Florida churches and students. Third, non-credit students are welcome in the classrooms at FCC, and non-credit classes are frequently offered in local churches. However, the requirements for credit students are as demanding as those of other quality institutions of higher learning. Fourth, FCC exists to undergird the work of New Testament congregations, especially in Florida. Every student and member of the Faculty is active in a local church.

### ***Our Objectives***

The program at FCC is designed to help you mature intellectually, socially, and spiritually, thereby preparing you for more effective Christian service. Intellectually you will be challenged through exposure to three kinds of courses: Biblical, humanities, and ministerial. Courses taught in the Division of Bible enable you to appreciate, understand, and defend the Word of God. The Division of Humanities provides courses to help you to understand and relate to culture. Courses in the Division of Ministry equip you with the skills of communication and leadership necessary to engage in a church- or school-related vocation.

Social maturity is enhanced through apartment living, athletic events, involvement in congregational life, and planned social activities. Through these experiences, you will learn the arts of patience, self-control, and social adjustment; demonstrate qualities of leadership as well as the grace of being a good follower; employ proper etiquette, appropriate dress, and personal hygiene; manifest proper respect for and ability to relate to the opposite sex; practice principles of group dynamics, problem solving and planning; and experience competition in the context of higher Christian values.

Spiritual growth is fostered by the weekly Family Worship Hour, weekly Discipleship Groups, special programs throughout the year, and participation in local church activities. Through these activities you will develop the practice of regular corporate worship, be able to discern appropriate music for public worship, be involved in personal devotions, be able to cope with spiritual low-points more adequately, and be able to demonstrate spiritual maturity in interpersonal relationships.

### ***Our Standing***

FCC operates and grants degrees under an exemption from licensure granted by the Commission for Independent Education with the Florida Board of Education. It is a member of the National Association of Independent Colleges and Universities (NAICU), and the Florida Association of Colleges and Universities.

Florida Christian College is accredited by the Commission on Colleges of the Southern Association of Colleges and Schools (1866 Southern Lane, Decatur, Georgia, 30033-4097: telephone number 404-679-4501) and by the Accrediting Association of Bible Colleges (5890 South Semoran Blvd., Orlando, FL 32822: telephone number 407-507-0808) to award Associate and Bachelor degrees.

FCC programs are recognized by the State Approving Agency for persons eligible under laws administered by the Veterans Administration.

### ***Our Location***

Florida Christian College is located in Central Florida twenty miles south of Orlando, just east of Kissimmee. The college is ten miles from the main gate of Disney World, and just across the street from the spring-training facility of the Houston Astros baseball team. If you are coming from north of Kissimmee via the Turnpike, exit at #244 and turn right toward Kissimmee. Coming from the south via the Turnpike, exit at #242 and turn left toward Kissimmee.

## Admissions

Those meeting the following qualifications may be considered as candidates for admission to Florida Christian College for the purpose of pursuing a degree:

1. You must be a Christian or give evidence of your willingness to respond positively to Christian instruction.
2. You must be of sound moral character and give evidence of your willingness to abide by college regulations.
3. You must be in a state of sound mental health.
4. You must have a high school diploma or its equivalent.
5. You must take the ACT Assessment. If you are unable to take this test before you arrive on campus, it will be administered at FCC on a date to be announced.
6. If you are transferring credits from another institution, you must provide up-to-date, original transcripts from each institution. In addition to evidence of academic standing, supportive character references may be secured from other institutions.
7. Ability to Benefit. In order to begin classes, a degree-seeking student must present to the college Admissions office evidence of *one* of the following:
  - Evidence of High School Graduation
  - Completion of a two-year program that is acceptable for full credit toward a bachelor's degree
  - GED
  - Receive an acceptable score on a Department of Education approved test.

More information regarding the Ability to Benefit policy may be secured in the Admissions Office.

The FCC admission requirements in regard to moral or spiritual stature are based upon the principle that, while the College is a tool of the church, it is not a local church. Therefore, the college assumes neither the prerogatives nor responsibilities of a local church. Admission requirements reflect the privilege and responsibility of the college to establish minimum standards of moral and spiritual character and behavior that preserve and enhance the atmosphere of learning in a context of devotion to Christ. Admission to the college does not certify membership in the Body of Christ, and graduation from FCC does not certify a student as a professional servant of a local church. It remains the responsibility of the church to evaluate, ordain, and otherwise deal with the student in matters that concern personal salvation or the life of the local fellowship. This includes the responsibilities of the local church to give careful consideration to the matter of recommending students for admission to FCC.

### ***Additional Admissions Information***

If additional information is desired, or if an applicant desires to speak with someone concerning admission to Florida Christian College, contact the Admissions Office (407-569-1172).

An admissions counselor will mail you an admissions packet and financial aid information. The admissions process is outlined in the packet.

Admissions Standings



When the student has completed all necessary steps in the Admissions process, the Admissions Committee will place the applicant in one of three admissions standings: Regular, Provisional, or Conditional. The Director of Admissions officially notifies applicants of their admission standing immediately after the committee action.

*Regular Admission Standing.* Applicants who have demonstrated that they are qualified intellectually, physically, and spiritually for the rigorous program at FCC will be granted Regular Admission standing.

*Provisional Admission Standing.* Applicants who have demonstrated that they are otherwise qualified to be admitted to FCC but lack paperwork are admitted as Provisional Admission. When all necessary paperwork has been received in the Office of Admissions, the committee acts to grant Regular Admission standing.

*Conditional Admission Standing.* Applicants who through official records or references are found to possess a weakness academically, socially, or spiritually may be granted Conditional Admission standing. If the applicant can meet the college standards for at least two terms, the committee will review the admission standing to consider granting a Regular Admission standing. The primary purpose for a conditional admission is to assist the college in assisting the student in making his or her college experience one that is positive.

### ***Criminal Charges or a Prison Record***

Applicants who have been charged with a crime or have a prison record must meet all admissions requirements outlined above. In addition to these requirements, persons with criminal charges against them may not be admitted until those charges are fully cleared. Those who have a prison record must have been released from prison (not out on bail) for at least one year, during which time they must have been actively involved in their church directly under the oversight of the elders and the minister(s) of that church.

### ***Home-Schooled Applicants***

Home-schooled students must meet all admissions requirements for admission outlined above. They must provide authentic documentation from their state Department of Education or their home school organization showing satisfactory completion of their education through the twelfth grade. A GED certificate or an acceptable score on a standardized test approved by the Department of Education may be used to demonstrate completion.

### ***International Students***

International students must meet all admissions requirements for admission outlined above. In addition, they must meet the requirements for acceptance for foreign (non-immigrant) students by the Department of Homeland Security. International students should contact the Admissions Office for the specific procedure that must be followed in order to be admitted to FCC. The admission process of an international student is many times lengthier than for regular applicants; therefore, it is recommended that international students begin the application process as early as possible.

### ***Nondiscrimination Statement***

Florida Christian College admits students of any sex, race, color, age, and national and ethnic origin to all the rights, privileges, programs, and activities generally made available to students at the college. It does not discriminate on the basis of race, color, physical handicap, age, or national and ethnic origin in the administration of its educational policies, admissions policies, scholarship and loan programs, and other school-administered programs. Campus buildings are designed and equipped to accommodate physically disabled students.

### ***Special Diploma***

There are various levels of "diploma" awarded by high schools in many states, including Florida. The admissions requirement for a High School Diploma refers to a standard diploma; that is, the student has fulfilled all requirements of graduation. Certificates of attendance and special diplomas issued to persons not able to complete all graduation requirements do not meet the High School Diploma requirement. Students with special diplomas or certificates of attendance may choose to seek a GED or an acceptable score on a standardized test approved by the Department of Education to meet the Ability to Benefit requirement for admission to FCC. Additional information is available in the Admissions Office.

## **Student Life**

An entire area of our administration exists to enhance student life on campus. We want to help students...

1. Develop Christian character and social maturity.
2. Become a positive member of the campus community.
3. Prepare for a lifetime of faithful Christian service.

FCC Student Life personnel assist with the transition to college life by helping students gain the most from their college experience. Detailed information is available about the various programs from the Student Life Office or by consulting the FCC *Student Life Handbook*, which can be found online at [www.fcc.edu/students/](http://www.fcc.edu/students/). A brief summary of some of the activities, services, and requirements students may expect are described below.

### ***Life-long Leadership Development***

Leadership development is a key part of the educational program at FCC. Students are required to participate in the Life-long Leadership Development program.

The three areas described below target both the student's spiritual maturity as a follower of Christ and the student's service to others as a servant of Christ.

#### ***Spiritual Development***

While many of the classes and activities at FCC are designed to encourage spiritual development, Family Worship Hour and D-Group are two of the primary areas where spiritual development is formally addressed. Family Worship Hour is when the College community gathers for corporate worship. D-Group is an opportunity to experience the spiritual accountability only made possible in a smaller group, leading to personal growth and integrity.

#### ***Personal Development***

Student Life offers seminars on a wide array of topics throughout each semester that are designed to help students develop personally. These seminars are developed to both help the student have success in their educational experience and to encourage a life-long practice of personal development.

#### ***Community Development***

Christians are called to be a light to both the Christian community and to the community at large, their fellow man. Christian Service, the practice of serving others, is a vital aspect of leadership development. Good leaders are developed from good followers.

### ***Organizations/Clubs***

Students are encouraged to form special clubs around particular interests. Normally, these organizations are requested by students and function with the supervision of a faculty or staff sponsor. Pep Club (promotes sporting events participation), Timothy Club (preaching club), and M.O.V.E. (missions outreach club) are all examples of standing clubs.

## ***Music***

Vocal and instrumental ensembles are organized under the supervision of the music department; they perform for church programs, retreats, camps, Family Worship Hour, and other school functions.

## ***Student Council***

The FCC Student Council enjoys a reputation as a concerned and effective group of student leaders committed to enhancing the quality of campus life. Council members formulate proposals to change policies governing student life, gain valuable experience working within a constitutional organization, and sponsor significant services and programs each year.

## ***Classes***

In the Class program, students are assigned to a faculty member, who shares an important role in the planning of various on and off campus events. Classes plan picnics, special-interest trips, and activities with other classes. They engage in community service projects and also sponsor a special campus wide banquet each year.

## ***Athletics & Recreation***

FCC is a member of the Florida Christian College Conference and the National Christian College Athletic Association. Intercollegiate men's basketball, and intercollegiate women's basketball are an established part of the FCC athletic program. Eligibility is determined by conference rules. In addition, FCC annually fields teams in club sports, depending on student interest. Every student is encouraged to be involved in the college's intramural or club sport program.

The campus provides several opportunities for recreation: a swimming pool, a gymnasium for volleyball and basketball, an exercise room, and a ping-pong and pool table. Students also enjoy a barbeque grill and picnic area, a fenced playground for children, and plenty of space for walking, jogging, reflecting, and outdoor games.

## ***Social Life***

FCC students have the opportunity to enjoy a wide variety of recreational, entertainment, and sightseeing activities. Central Florida abounds with famous tourist attractions and natural beauty that make the Orlando area the world's number one vacation destination.

The area also offers many other cultural opportunities including art galleries, parks, museums, a planetarium, and professional sporting events. Major convention centers and performing arts centers regularly host many professional arts and entertainment performers from around the world. Swimming, deep-sea fishing, snorkeling, diving and boating are great leisure activities available to those who live in the area surrounding FCC.

Other opportunities for entertainment are within walking distance of the college:

The spring training complex for professional baseball is across the street, the Silver Spurs Rodeo and the Osceola County Fairgrounds are just around the corner, and world-class bass fishing is accessible in downtown Kissimmee.

Students at FCC develop strong relationships with college staff and faculty. Employees of the College make themselves available in a wide array of Student Life activities.

## **Campus Housing**

### ***Single Students***

Single students living on campus are placed in apartments— providing the student with the experience of independent rooming along with Christian fellowship, a family atmosphere, and the security of college housing equipped with satellite TV and wireless internet access.

Amenities provided include on-campus parking, laundry facilities, swimming pool, exercise room, student lounge with TV/VCR/DVD and stereo access, and plenty of space for recreation in the park-like atmosphere of the southern part of the campus.

Campus housing also includes ground-level apartments designed and equipped for the physically disabled.

### ***Family Housing***

FCC welcomes families and encourages them to become involved in the campus community. Students with families enjoy the pool and recreation rooms as well as playground equipment, bicycle racks, picnic tables and an abundance of grassy areas for play.

Two issues critical to most students with families, housing and employment, are available either on campus or within an easy drive.

### ***Standards***

Florida Christian College is dedicated to the training of men and women for effective Christian service. Servants of Christ must live by the standards of Christ, including those for ethical behavior. Romans 12:1-2, Ephesians 2:10, I John 2:15-16,

I Corinthians 8:9-13, and 10:22-23 clarify our understanding of God's expectations for His people.

We recognize it is difficult to judge the motives that produce behavior. The College, however, accepts the responsibility to establish minimal standards of conduct to enhance the quality of student life and to insure that the school will not be compromised in its task as a Christian institution of higher learning.

### ***Discipline***

The standards at FCC exist to encourage a Christian educational community.

The standards specified in the current edition of the *Student Life Handbook* will be strictly followed.

### ***Awards***

FCC recognizes the non-academic achievement of students with its annual Citizenship Award, Sunburst Awards, Son of FCC, Daughter of FCC, and various athletic awards. These are presented along with academic honors, at events such as Convocation, Commencement, Closing Circle, or the Awards Banquet.

### ***Medical Information***

The College is committed to making every reasonable effort to provide students with a healthy learning and living environment. The college community has access to emergency, general medical and specialized physicians in close proximity to the campus. On-campus medical services include educational opportunities and information. The Student Life Office has personnel that are available to assist in directing students toward medical care and to provide transportation if necessary.

On campus students must either elect medical insurance coverage with the college or present documentation of coverage on their own policy, or on their parent's policy.

### ***Immunization Requirements***

According to FCC's immunization policy, and in cooperation with State regulations, students born after 1956 must provide proof of immunization against measles and rubella. Specific immunization requirements are the following: 5 DPT, 4 Polio, \*2 Measles, \*1 Mumps, \*1 Rubella (\*preferably as 2 doses of MMR) vaccines.

### ***Privacy Rights***

The *Family Educational Rights and Privacy Act* (FERPA), established by Congress in 1974, was designed to protect the privacy of educational records, to establish the right of students to inspect and review their education records, and to provide guidelines for correction of inaccurate or misleading data.

*See the Student Life handbook for full details.*

## Student Financial Aid

Without some form of financial assistance, many students would not be able to attend college. Most FCC students who apply receive some form of financial aid. The college, through the Financial Aid Office, is committed to:

1. provide information to students regarding access to sources of financial aid, financial responsibility, and accountability for financial aid received;
2. distribute financial aid to students;
3. develop adequate financial, human, and physical resources to help students achieve academic and personal goals; and
4. comply with federal and state regulations and guidelines concerning financial aid.

Financial aid is not intended to replace the student and family's financial responsibilities; it is intended to supplement the family's resources. Even so, there are many sources of financial aid available to FCC students. The following are administered through the FCC Financial Aid Office under the direction of the Vice President of Student Life and the Student Life Committee.

**Federal Programs:** Federal Pell Grant, Federal Supplemental Educational Opportunity Grant (FSEOG), Federal Work-Study, Federal Stafford Loans, and Federal Parent Loans for Undergraduate Students (PLUS).

**State Programs:** Florida Student Assistance Grant, Florida Bright Futures Scholarships (Academic Scholars, Merit Scholars, and Gold Seal Vocational Scholars), Jose Marti Scholarship Challenge Grant Fund, Robert C. Byrd Honors Scholarship Program, and Seminole and Miccosukee Indian Scholarship. The college is also approved by the state as an eligible private institution for the Florida Prepaid College Program.

### **Department of Veterans Affairs Educational Benefit and Vocational Rehabilitation**

**Benefit Programs:** FCC is approved for veterans educational benefits by the State Approving Agency for Veterans' Training. FCC is also approved for vocational rehabilitation benefits by the U.S. Department of Veterans Affairs. Although these programs are administered through the U.S. Department of Veterans Affairs, the college Financial Aid Office maintains a supply of necessary forms and will help you complete the forms. Recipients of veterans benefits should be advised of the following:

1. Only courses for which an unsatisfactory grade was received may be re-certified for benefits.
2. Dismissal from the college is handled by the Student Life Committee on an individual basis.
3. Readmission subsequent to dismissal from the college is handled by the same procedure as regular admission.
4. The first term on Academic Restriction in the Academic Assistance Program will be considered a probationary term for VA payment purposes. VA Educational Benefit recipients will be dismissed for pay purposes if the student is placed on Academic Restriction for a second consecutive term or if the student is placed on Academic Probation.
5. A student receiving VA benefits must attain a CGPA of 2.0 or above at the mid-point of their degree program to continue receiving VA benefits.
6. VA Educational Benefit recipients with previous post-secondary educational

training/experience must request official transcript(s) be sent to this school. Upon receipt, the transcript(s) will be evaluated and credit for previous training will be allowed where appropriate. (See further explanation of Transfer Policy in the Academic Policy section of this Catalog.) The College will maintain a written record that clearly indicates that appropriate previous education and training has been evaluated and granted and that the VA and the veteran have been so notified. In certain cases with a student enrolled in the Alternative Degree Completion program, depending on the specific course, the semester tuition charge may be proportionately reduced for an ADC course being replaced with approved transfer credits.

### ***Institutional Programs:***

**FCC Grants** are available to students who meet certain qualifications. Supporting Church Grant, Minister's Dependent Grant, Spouse Grant, Robert & Sharon Tison Preaching Award, Music Team and Summer Team Programs, FCC Alumni Grant, Bible Bowl Scholarship, FCC Scholarship Tuition Grant.

**FCC Scholarships** may be awarded to students who apply and are eligible for the particular scholarship sought.

***Preaching*** – Willard Walker Preaching Scholarship, David & Eva Meyer Preaching Scholarship.

***Cross-Cultural Ministries*** – Ocala Missions Scholarship, Max R. Sias Missions Scholarship, Trulock Missions Scholarship, Wheeler Missions Scholarship, International Mission Scholarship.

***Education*** – Davenport Education Scholarship, Ruth Westfall Christian Education Scholarship, Rotary Club of Kissimmee Education Scholarship.

***Counseling*** – Lee & Jean Canada Counseling Scholarship.

***Music*** – Roberta Chambers Music Scholarship, Bright Music Scholarship, Rosendahl Music Scholarship, Brough Scholarship.

***General*** – Bezell Academic Excellence Scholarship, Marie Kinzie Bessellieu Scholarship, Timothy Brown Memorial Scholarship and Loan, Cookson Hills Scholarship, Eustis First Church of Christ Scholarship, FCC Scholarship, Gibbons Scholarship, Maude Lacey Scholarship, Luis & Ana Morales Scholarship, Piersol Scholarship, Snead Scholarship, O.T. and Ethel Sparrow Scholarship, Virginia Gardens Scholarship.

**Outside Sources:** Church Support, Alexander Christian Foundation Scholarship – Florida, Illinois, or Indiana residents, Community Scholarship, Employer Scholarship, Foundation Scholarship. For more information about scholarship sources, please visit the free scholarship search service at [www.finaid.org/scholarships](http://www.finaid.org/scholarships) on the Internet.

### ***Application Process***

To determine eligibility for financial aid, a student completes the Free Application for Federal Student Aid (FAFSA), which is available on the internet at [www.fafsa.ed.gov/](http://www.fafsa.ed.gov/) or at any high school guidance office. In addition, a student completes the FCC Financial Aid Data File. Early application is important because some forms of aid are awarded only to early applicants. Aid applicants receive an FCC Financial Aid Award Notification after the Financial Aid Office has received and reviewed these applications.

Contact the FCC Financial Aid Office for forms and assistance in completing the financial aid



application process. For further information on financial aid, please refer to the Financial Aid section of the college's web site at [www.fcc.edu](http://www.fcc.edu).

### ***Retaining Aid Eligibility***

In order to continue receiving most forms of financial aid, students must make measurable satisfactory progress in a course of study (see "Satisfactory Academic Progress" in the Academic Policies section). The qualitative measure of satisfactory academic progress is a cumulative grade point average (CGPA) of 2.000 or above. The quantitative measure of satisfactory academic progress is successful completion of 75% of the credit hours attempted.

Students receiving financial aid which is based on enrollment status may have aid decreased or discontinued due to less-than-full-time enrollment status caused by decreased hours imposed by the Academic Assistance Program. In addition, students who have completed the first two years of their degree program (that is, Juniors and Seniors) will be ineligible for Title IV and institutional aid for any term in which their cumulative grade point average (CGPA) is below 2.0 ("C" average). Aid eligibility is reinstated when the student's CGPA increases to 2.0 or above, as long as all other eligibility requirements are met. For specific details of how this may effect aid, contact the Financial Aid Office.

Financial aid may not be paid for any payment period in which satisfactory academic progress standards are not met. Aid eligibility is reinstated in the term after a student meets satisfactory academic progress standards. In the case of student loans, a student who does not meet satisfactory academic progress standards at the beginning of an academic year but who meets the standards later in the award year is eligible for the entire period of at-least-half-time enrollment during the award year.

## **Refund Policy**

### ***Withdrawal from a Class***

A student who withdraws from a class during the first week of a term will receive a 100% refund of tuition. After the first week of a term, withdrawal from a class, but not from school, will result in no refund. **NOTE:** Reducing the number of credit hours may reduce the amount of financial aid received.

### ***Withdrawal from School***

A student who withdraws from school, ceases attendance, or is dismissed during a term may have a portion of institutional charges refunded. Institutional charges equal all of the following: tuition, fees (excluding non-credit courses), campus housing (rent, utility deposit, and telephone service fee, wireless internet fees), and required books and supplies purchased at the FCC Bookstore.

The student's withdrawal date is determined by the college as described below. The percentage of the term completed by the student is based on the number of calendar days to the withdrawal date divided by the number of calendar days in the term (less any scheduled break of 5 days or more). **NOTE:** A student who has appealed to the Registrar's Office for a grade of "W" after the end of the withdrawal period, may also appeal to the Financial Aid Office for consideration of extenuating circumstances in the refund calculation.

### ***FCC Tuition and/or Housing Refund***

An FCC Tuition and/or Housing Refund is applied according to the following timetables. Unearned portions of deposits may be refundable; however, fees are non-refundable. Book returns are subject to FCC Bookstore policies.

<b>TUITION</b>		<b>HOUSING (Single Student)</b>	
up to and including 50% of the term	proportional refund	1st week	75% refund
		2nd week	50% refund
after 50% of the term	no refund	3rd week	25% refund
		thereafter	no refund

FCC will retain the appropriate amount due to the college (100.0% minus the percentage refunded to the student). All aid and payments made by the student, less the appropriate amount retained by and due to the college, will be returned proportionally to the sources of such aid and payments.

### ***Return of Title IV Funds***

Return of Title IV Funds is also required when a student receiving Title IV aid withdraws from school during a term in which the student began attendance. In such a case, the school will determine the amount of Title IV grant or loan assistance that the student earned as of the student's **withdrawal date** (see below). If the percentage earned is greater than **60.0%**, the student is considered to have earned 100% of Title IV aid. If the total amount of Title IV grant or

loan assistance that the student earned is *less* than the amount of Title IV grant or loan assistance disbursed to the student, the difference must be returned to the Title IV program(s) and no additional disbursements may be made to the student for the term.

If the total amount of Title IV assistance earned is *greater* than the amount disbursed, the difference must be treated as a **post-withdrawal disbursement**. A post-withdrawal disbursement may be credited to the student's account if outstanding charges exist, up to the amount of outstanding charges, using available grant funds before available loan funds. If loan funds are used to credit the student's account, the school will notify the student (or parent in the case of a PLUS loan) and provide an opportunity for the borrower to cancel all or a portion of the loan. Any remaining amount of a post-withdrawal disbursement may be refunded directly to the student. Written notification will be provided to the student indicating the following:

- a) Identifying the type and amount of Title IV funds that make up the post-withdrawal disbursement that is and is not credited to the student's account;
- b) Explaining that the student may accept or decline some or all of the post-withdrawal disbursement that is not credited to the student's account; and
- c) Advising the student that no post-withdrawal disbursement will be made to the student if the student does not respond within 14 days of the date that the school sent the notification. The school may choose to make a post-withdrawal disbursement if the student's response is not received within 14 days.

### ***Distribution of Funds***

If Title IV aid is returned to the Title IV program, the funds are distributed in order, up to the total net amount disbursed from each source:

1. Unsubsidized Federal Stafford Loan
2. Subsidized Federal Stafford Loan
3. Federal PLUS Loan
4. Federal Pell Grant
5. FSEOG
6. Other Title IV Student Financial Aid programs (excluding FWS)

If a student received no Title IV funds, the amount to be returned is distributed proportionally to the sources of aid and student payments.

### ***Withdrawal Date***

A student's withdrawal date is determined according to one of the following methods:

- a) the date, as determined by the school, that the student began the withdrawal process prescribed by the school.
- b) the date, as determined by the school, that the student otherwise provided official notification to the school, in writing or orally, of his or her intent to withdraw. Written notification must be received in the Registrar's Office; email is acceptable. Oral communication must be made to Registrar's Office personnel. A message on voice mail may not be used to meet the oral requirement.
- c) a student's last date of attendance at an academically-related activity documented by the school (i.e., an exam, a tutorial, computer-assisted instruction, academic counseling, academic advisement, turning in a class

assignment, or attending a study group that is assigned by the school).

- d) the date the school determines is related to a special circumstance of illness, accident, grievous personal loss, or other such circumstances beyond the student's control.
- e) the mid-point of the term if the student ceases attendance without providing official notification to the school in the prescribed manner.

A student may rescind his or her official notification to withdraw by filing a written statement that he or she is continuing to participate in academic-related activities and intends to complete the term. However, if the student subsequently ceases attendance prior to the end of the term, the student's rescission is negated and the withdrawal date is the student's original date, unless a later date of attendance at an academically-related activity is determined by the school.

### ***Examples***

The Financial Aid Office can produce an example of the Return of Title IV Funds and the FCC Tuition and/or Housing Refund upon request.

## **Student Consumer Information**

Because the college participates in the Title IV federal financial aid program, the college is required to disclose specific information to students, prospective students, and/or the general public. These disclosure requirements include the following:

### **Student Right-To-Know and the Cleary (Campus Security) Act**

- Annual Security Report: Institutional Security Policies and Crime Statistics (by October 1)
- Information on Completion or Graduation Rates (annually by July 1)

### **Equity in Athletics Disclosure Act**

- Annual Report on Athletic Program Participation Rates and Financial Support Data (by October 15)

### **Drug-Free Schools and Campuses Act**

- Information on the college's alcohol and drug abuse awareness program
- Annual summary of the college's policy concerning alcohol and drugs

Anyone may request a full copy of the reports listed above. Please contact the Student Life Office (Extension 328) for a full copy of the Annual Security Report, Report on Athletic Program Participation Rates and Financial Support Data, or information on the college's alcohol and drug abuse awareness program. Please contact the Academic Records Office (Extension 313) for the Completion or Graduation Rates.

## Personnel

### ***Board of Trustees***

Trustees formulate policy for the College and hire administrators to execute that policy. There have been 101 different persons to serve as a trustee at Florida Christian College since it began in 1976. The members of the Board of Trustees are successful in their professions, fruitful in their service for Christ, and are identified with a New Testament congregation.

#### Leadership for 2005-2006 School Year

Chair.....James Book  
 Vice Chair.....Allan McMillan  
 Secretary..... Lavon Burnam  
 Treasurer ..... Larry Ferguson

#### Membership

<b>Class</b>	<b>Trustee</b>	<b>City, State</b>
2004	Mr. James C. Book	Winter Park, FL
2004	Mr. Mark Durbin	Kissimmee, FL
2004	Mr. Luis Morales	Miami, FL
2005	Mr. Robert Beltz	Indianapolis, IN
2005	Mr. Norman Edwards	Fort Myers, FL
2005	Mr. Allan McMillan	Jacksonville, FL
2005	Mr. Fred Smith Jr.	Jacksonville, FL
2006	Mr. Douglas Linnert	Casselberry, FL
2006	Mrs. Leah McManus	Tallahassee, FL
2007	Dr. James Cook	St. Petersburg, FL
2007	Mr. Larry Ferguson	Winter Haven, FL
2007	Dr. Hal Gumbiner	New Port Richey, FL
2007	Mrs. Nancy Norman	Winter Haven, FL
2007	Mr. Philip Walter	Ocoee, FL
2007	Mr. Roger K. Wright	Ocala, FL
2008	Mr. William Berry	Winter Haven, FL
2008	Mrs. Mary Lou Harden	Seffner, FL

## **Florida Christian College Foundation**

### ***Foundation Purpose***

The purpose of the Florida Christian College Foundation is to receive, invest, and utilize the income from gifts for the benefit of Florida Christian College. Specific purposes mentioned include academic programs, libraries, activities, construction of property, student scholarships, student or faculty research projects, or any other proper activity of the College. In summary, the Foundation purpose is to assist Florida Christian College through the raising, investment, and expenditure of endowed funds. All principle of gifts is to remain in perpetuity, with only the interest being spent.

### ***History***

Organizational work for the establishment of the Florida Christian College Foundation was done in 1984, with the concept being discussed, particularly by businessman Dairell Snapp who was the driving force behind the Foundation. Legal work was done at the close of 1984 to have the Foundation incorporated, and the first official meeting of incorporators was held on January 29, 1985. Original Incorporators included Dairell Snapp, Dr. Marion Henderson, John J. Eynon, Loran Dace, and Leroy Trulock.

The vision for the Foundation expressed by the Founders was to develop an organization that business people would understand and contribute to, with the goal being to establish endowed funds that would provide an annual income to benefit the college forever. The maximal goal was to secure enough endowments that the college operations could be guaranteed.

The first and major project of the Foundation was confronted immediately, namely the construction of Foundation Hall, the front student apartment complex on the new 40-acre campus of FCC. The Foundation financed the first apartment building with the College paying back only principal. This saved the college \$346,575 in interest expenses.

### ***Foundation Directors***

Chair..... Fred W. Smith, Jr.  
 Vice-Chair..... Doyle Wolford  
 Secretary..... President Armstrong  
 Treasurer ..... Paul S. Johnson

Class	Director, City, State
	Richard Hubbartt, New Port Richey, Florida
	Charles McNeely, Orlando, Florida
	George Mitchell, Pompano Beach, Florida
	Fred W. Smith, Jr., Jacksonville, Florida
	Chet Tokar, Orlando, Florida
	Frank Attkisson, Kissimmee, Florida
	Wallace Andres, Heathrow, Florida
	Bill Boyd, Apopka, Florida
	Paul Johnson, Orlando, Florida
	Robert Tison, Jacksonville, Florida
	Elizabeth Wilkens, Deerfield Beach, Florida

Doyle Wolford, West Palm, Florida  
Harold Armstrong, Kissimmee, Florida



## College Administration

The administrative officers, under the direction of the chief executive officer of the college, are responsible for the implementation of the policies of the Board of Trustees. The following are administrative officers of Florida Christian College:

**Harold Armstrong**, B.A., M.A. President. B.A. Cincinnati Bible College; M.A., Cincinnati Bible Seminary. Ministries: 30 years. Florida Christian College, 2002 –.

**J. R. (Tony) Buchanan**, B.S., M.M.Ed., Ed.D. Executive Vice President; B.S. Atlanta Christian College; M.M.Ed. University of Central Florida; Ed.D. Nova Southeastern University. Music ministries: 13 years. Instructor, Florida Christian College, 1978-84; 1986-89. Vice President, 1989 –.

**Terry Allcorn**, B.S., M.A., Ph.D. Vice President of Student Life. B. S. in Christian Ministry Kentucky Christian College, M.A. in Missions from Ashland Theological Seminary, M.A. in Spanish Cleveland State University, and Ph.D. in Education Capella University. Florida Christian College, 2002 –.

**David L. McNeely**, B.A., B.Th. Vice President of Business. B.A., B.Th. Florida Christian College, Florida Southern College, Florida Atlantic University, and Nova [Southeastern] University. Prior experience: 3 years commercial banking, 28 years public and private accounting, various staff and administrative positions at Florida Christian College. Florida Christian College, 1984 –.

**William Behrman**, B.A. Vice President of Institutional Advancement. B.A. Indiana University. Florida Christian College, 1998 –.

## College Faculty

FCC is proud of its faculty! Among the FCC faculty are nationally known authors, lecturers, and preachers. Even more important, each member of the faculty is dedicated thoroughly to the cause of Christ and to building students in their Christian experience. Listed below are the members of the faculty with their credentials. The year after each name indicates the beginning year of service at FCC. An adjunct professor is a part-time instructor.

### ***Academic Leadership***

Vice President of Academics .....	Dr. J. R. (Tony) Buchanan
Librarian.....	Linda Stark
Dean of Enrollment Management .....	Philip Vincent
Registrar .....	Brian Smith
Associate Registrar .....	Diane Adams
Assistant Dean for LEAD.....	Marilyn Armstrong
Chair of Division of Bible .....	Dr. James Smith
Chair of Division of Humanities .....	Prof. Michael Chambers
Chair of Division of Ministry .....	Prof. Lyle Bundy

### ***Faculty***

**Terry Allcorn, B.S., M.A., Ph.D.** Associate Professor of Education. B.S. Kentucky Christian College, M.A. Ashland Theological Seminary, M.A. Cleveland State University, and Ph.D. Capella University. Florida Christian College, 2002 – present. (407-569-1163) [Terry.Allcorn@fcc.edu](mailto:Terry.Allcorn@fcc.edu).

**Harold Armstrong, B.A., M.A.** Associate Professor of Leadership Skills. B.A. Cincinnati Bible College, M.A. Cincinnati Seminary. Florida Christian College 2002-present. (407-569-1160) [Harold.Armstrong@fcc.edu](mailto:Harold.Armstrong@fcc.edu).

**Kimberly Boyd, B.S., M.S., Ed.D.** Associate Professor of Education. B.S. Georgia Southern University, M.Ed. West Georgia College; Ed.D. University of Central Florida. Florida Christian College, 2001 – present. (407-569-1345) [Kim.Boyd@fcc.edu](mailto:Kim.Boyd@fcc.edu)

**Terry Bradds, B.S.** Adjunct Associate of Private Guitar. B.S. Cincinnati Bible College. Florida Christian College 2000 – present. (407-569- 1167)

**J. R. (Tony) Buchanan, B.S., M.M.Ed., Ed.D.** Associate Professor of Administration. B.S. Atlanta Christian College; M.M.Ed. University of Central Florida; Ed.D. Nova Southeastern University. Instructor, Florida Christian College, 1978-84; 1986-89. Vice President, 1989 – present. (407-569-1162) [Tony.Buchanan@fcc.edu](mailto:Tony.Buchanan@fcc.edu)

**Lyle Bundy, B.A., M.A., M.Div.** Professor of Counseling. B.A. Lincoln Christian College; M.A. Governor State University; M.Div. Lincoln Christian Seminary. Florida Christian College 1983 – present. (407-569-1322) [Lyle.Bundy@fcc.edu](mailto:Lyle.Bundy@fcc.edu)

**Arron Chambers, B.A., B.Th., M.A.** Adjunct Assistant Professor of Theology. B.A. Florida Christian College, B.Th. Florida Christian College, M.A. Abilene University. Florida Christian College 2001- present. (407-569-1337)

**Michael L. Chambers, B.A., M.A., M.Div., Ph.D. (Candidate).** Professor of Philosophy and Apologetics. B.A. Lincoln Christian College; M.A., M.Div. Lincoln Christian Seminary; Ph.D. candidate Warnborough University (Canterbury, England); University of Florida; Concordia Theological

Seminary; University of South Florida; University of Cincinnati; Institute for Advanced Christian Studies; Instructor St. Louis Christian College (1975-76); Guest Lecturer, Cincinnati Bible Seminary (1983). Preaching Ministries: 8 years. Dean of Students, Florida Christian College, 1979-1993. Florida Christian College, 1979 – present. (407-569-1320) [Mike.Chambers@fcc.edu](mailto:Mike.Chambers@fcc.edu)

**Pam Chambers, B.A.** Adjunct Associate Professor of Music. B.S.M. Lincoln Christian College. Florida Christian College 1980-present. (407-569-1317) [Pam.Chambers@fcc.edu](mailto:Pam.Chambers@fcc.edu)

**James Chesser, B.A., M.Div.** Associate Professor of Bible. BA, Great Lakes Christian College; M.Div., Cincinnati Christian Seminary. Florida Christian College, 2004- present. (407-569-1321) [Jim.Chesser@fcc.edu](mailto:Jim.Chesser@fcc.edu)

**Kathy Dennis, B.A., M.S.** Director of Community Music School and Adjunct Associate Professor of Music. B.A. Mansfield University, M.S. Elmira. Florida Christian College 2003-present. (407-569-1376) [Kathy.Dennis@fcc.edu](mailto:Kathy.Dennis@fcc.edu)

**Russell Grove, B.A., M.A., M.Div., Ph.D. (Candidate).** Administrator for the Jacksonville Site and Adjunct Associate for Worldview. B.A. Cincinnati Bible College, M.A. Cincinnati Bible Seminary, M. Div. Cincinnati Bible Seminary. Florida Christian College 2004-present. (407-569-1171) [Russell.Grove@fcc.edu](mailto:Russell.Grove@fcc.edu)

**Lesley Hardin, B.A., M.A., M.Div., D.Min.** Associate Professor of New Testament. B.A., M.A. , M.Div., Cincinnati Christian University, D.Min., Ashland Theological Seminary. Florida Christian College 2005 -present. (407-569-1328) [Les.Hardin@fcc.edu](mailto:Les.Hardin@fcc.edu)

**Gregory P. Hartley, B.S., M.Ed.** Assistant Professor of Literature. B.S. Florida Christian College, M.Ed. Milligan College, Ph.D. in progress, University of South Florida. Florida Christian College 1997 –present. (407-569-1319) [Greg.Hartley@fcc.edu](mailto:Greg.Hartley@fcc.edu)

**Roland Howard, B.S., M.Div.** Associate Professor of Ministry. B. S. North Carolina University, M.Div., Lincoln Christian Seminary. Florida Christian College 2002 –present. (407-569-1334) [Roland.Howard@fcc.edu](mailto:Roland.Howard@fcc.edu)

**Sharon Lowen, B.S., M.Ed.** Adjunct Associate Professor of Education. B.S. Cincinnati Christian College; M.Ed. University of Cincinnati, University of Missouri. Florida Christian College, 1989 – present. (407-569-1337)

**John R. Lup, B.A., M.A., M.Div.** Associate Professor of Bible and Biblical Languages. B.A. Florida Christian College, University of South Florida, M.Div., M.A. Cincinnati Bible Seminary, Ph.D. in progress, University of South Florida. Florida Christian College, 1991 – present. (407-569-1333) [Jack.Lup@fcc.edu](mailto:Jack.Lup@fcc.edu)

**Robert Meier, B.A.** Adjunct Assistant of Music. B.A. Milligan. Florida Christian College 2002-present. (407-569-1167) [Rob.Meier@fcc.edu](mailto:Rob.Meier@fcc.edu)

**Ruth T. Reyes, B.M., M.A.** Associate Professor of Music. Pre-College Division, The Julliard School, B.M., Queens College of New York; M.A, Aaron Copland School of Music, Queens College. Ed.D. in progress, Nova Southeastern University. Certified instructor in the Yamaha Music Education System. Florida Christian College 1996 –present. (407-569-1372) [Ruth.Reyes@fcc.edu](mailto:Ruth.Reyes@fcc.edu)

**Tom Schmitt, B.A., M.Div.** Adjunct Assistant Professor of Ministry. B.A. Bowling Green, M.Div Andover University. Florida Christian College 1999-present. (407-569-1168) [Tom.Schmitt@fcc.edu](mailto:Tom.Schmitt@fcc.edu)

**Lisa Schonauer, B.A., M.A.** Adjunct Assistant Professor of Music. B.A. Florida Christian College, M.A. University of Central Florida. Florida Christian College 2000-present. (407-569-1167) [Lisa.Schonauer@fcc.edu](mailto:Lisa.Schonauer@fcc.edu)

**Twila J. Sias, B.A., M.Ed.** Associate Professor of English and Education, B.A. Lincoln Christian

College; M.Ed. University of Central Florida; Lincoln Christian Seminary. Nova Southeastern University. Florida Christian College 1976 –present. (407-569-1323) [Twlia.Sias@fcc.edu](mailto:Twlia.Sias@fcc.edu)

**James E. Smith, B.A., B.Th., M.Div., Ph.D.** Distinguished Professor of Bible. B.A., B.Th. Cincinnati Bible College; M.Div. Cincinnati Bible Seminary; Ph.D. Hebrew Union College-Jewish Institute of Religion. Academic Dean, Florida Christian College, 1976-1989. Florida Christian College, 1976 –present. (407-569-1337) [James.Smith@fcc.edu](mailto:James.Smith@fcc.edu)

**Linda A. Stark, B.A, M.L.S.** Librarian. B.A., M.L.S. Indiana University; Cincinnati Bible Seminary; Christian Theological Seminary. Librarian, Florida Christian College, 1986 – present. (407-569-1318) [Linda.Stark@fcc.edu](mailto:Linda.Stark@fcc.edu)

### ***Instructors***

Marilyn Armstrong

Mark Bourne

Sylvia Bright

James “Vic” Clevenger

Tammie Combs

Danny Dye

Diane Goodson

Shawn Grant

Kara Hardin

Danny Hamilton

Rebecca Howard

Bethany Humphrey

Bruce Humphrey

Gay Idle

Michelle MacMillian

Charles Moseley

Wayne Shaw – Visiting Professor

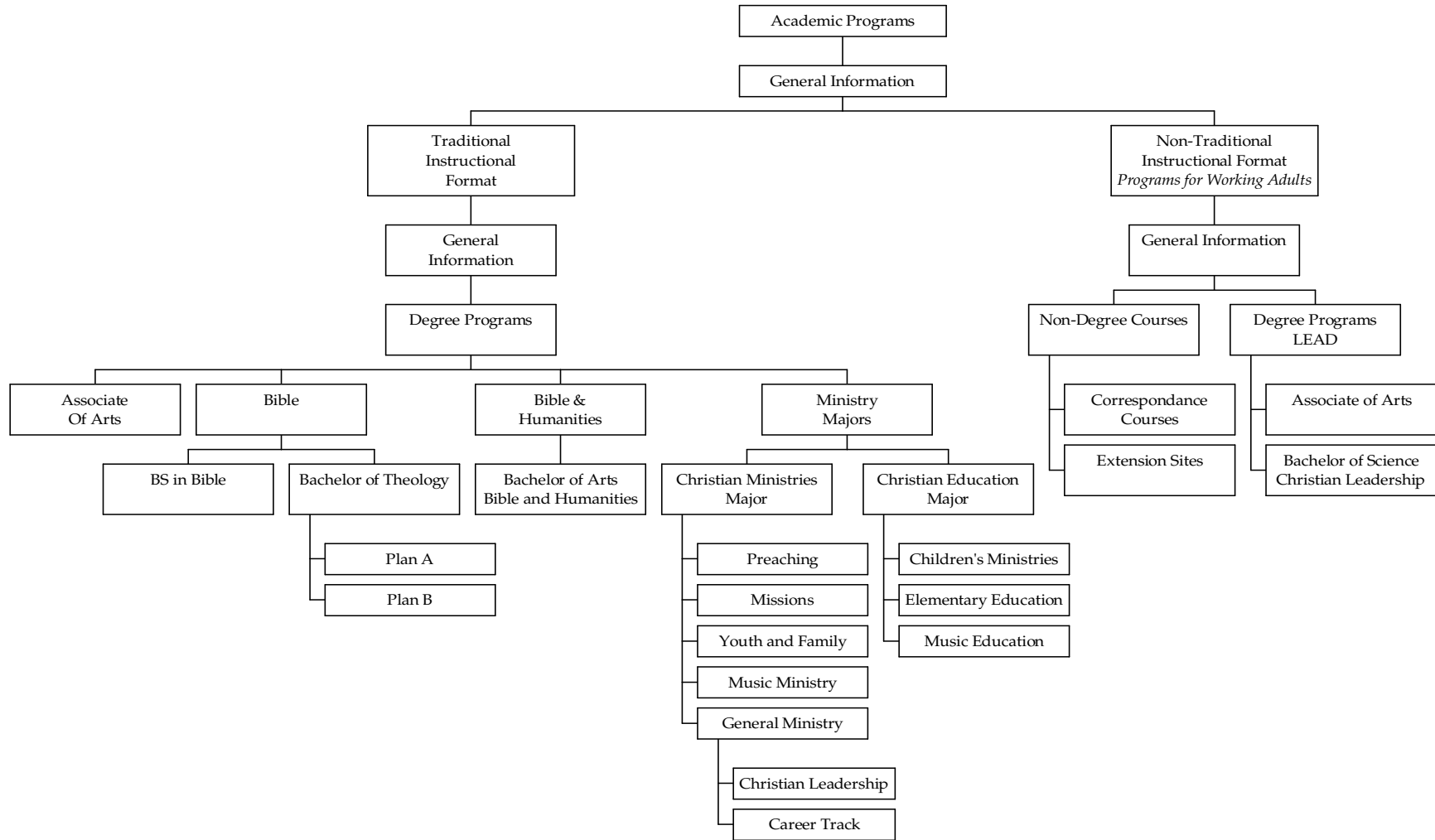
Debbie Smart

Brian Smith

Max Smith

Phillip Vincent

## Outline of Academic Programs



## Academic Programs

### Degree Programs 2004

FCC offers four degree programs: the Associate of Arts is a two-year program, the Bachelor of Arts and Bachelor of Science are four-year programs or four-and-a-half-year programs; and the Bachelor of Theology is a five-year program. Each degree program has been designed to meet specific needs in a Christian's personal life and in the leadership of the Church. Study of the Word of God occupies a position of prominence in all of these programs of study.

A degree program at FCC is a comprehensive curriculum of academic and non-academic requirements for a degree, including courses from the three divisions of study (Division of Bible, Division of Humanities, and Division of Ministry).

FCC is licensed to offer four degree programs that fulfill the purpose of the institution to "conduct a course of study to educate men and women for Christian service, to provide a program of instruction on the college level, to grant appropriate degrees, and to serve as a resource to the churches, especially in Florida."

The *minimum* total required hours are noted for each:

Associate of Arts	64 credits
Bachelor of Arts	135 credits
Bachelor of Science	135 credits

Bachelor of Theology 32 credits beyond the Bachelors of Arts degree.

A major is a concentration of at least 30 semester hours of courses leading to specified academic and vocational competencies appropriate to the college's degree programs. The hours in a major may be divided into a core and a specialization (e.g., Ministry major). Each ministry major is further divided into ministry specializations.

The courses are distributed appropriately throughout the student's program, with approximately 10% taken the Freshman and Sophomore years and the balance taken during the Junior and Senior years.

The College offers courses in four majors: Bible, Humanities, Christian Ministries, and Christian Education Ministries.

All degree-seeking students, except students in the Associate of Arts program, major in Bible. Students enrolled in the B.A. or B.S. programs also must declare one of the two ministry majors. The ADC Bachelor of Science program in Christian Leadership is explained in the ADC section of this catalog.

A specialization is a narrowly focused cluster of courses within a selected major. A specialization complements the core courses in the major, developing the major to achieve a specified outcome. Required hours vary somewhat between specializations, but all are a minimum of 20 credits.

A detailed description of the College's degree programs, majors, and specializations are provided in this Catalog.

## Associate Program

The Associate of Arts degree is designed to equip Christians with a basic knowledge of the Word of God, and the world that God created. This two-year program may be viewed as complete in itself, or as a foundational degree preparing for a bachelor's degree. When students have completed this course of study they should be able to . . .

1. describe the structure of Biblical history and literature.
2. understand their religious heritage.
3. demonstrate basic communication skills.
4. appreciate the evangelistic and educational purposes of the church.
5. interact with their culture analytically, socially, and spiritually.
6. be prepared for upper division courses.

The Associate of Arts degree requires sixty-four semester hours composed of the following blocks of courses:

### Associate of Arts Requirements

<b>Biblical Studies</b> 17 Credits	<b>Bible Introduction</b>	3	BIN 110 Intro. to Biblical Study (3) –OR– BIN 112 Bible Survey (3)
	<b>Gospels</b>	3	BNT 111 Life of Christ I (3) or BNT 121 Life of Christ II (3)
	<b>Church History</b>	3	BNT 260 Foundation of Christianity (3)
	<b>Bible History</b>	6	<i>Choose any two</i> BOT 2216 Foundations of Hebrew History (3) BOT 211 History of Israel (3) BOT 220 Genesis Seminar (2) + Biblical Research (1)* BOT 225 Seminar in Samuel (2) + Biblical Research (1)* BOT 226 Seminar in Kings(2) + Biblical Research (1)*
	<b>Bible/Theology Elective</b>	2	<i>Any two-hour BNT, BOT, or BTH course</i>
<b>General Education</b> 36 Credits	<b>Composition</b>	6	GEN 110 Composition I (3) GEN 120 Composition II (3)
	<b>Social Science</b>	3	GPS 110 Intro. to Psychology (3) –OR– GSO 220Intro. to Sociology (3)
	<b>Restoration History</b>	3	GHI 270 Restoration History (3)
	<b>History</b>	3	GHI 220 Western Civilization I (3) –OR– GHI 230 Western Civilization II (3)
	<b>Fine Arts</b>	3	GMU 210 Intro. to Music (3) –OR– GDR 110 Drama I (1) + GDR 115 Drama II (2)
	<b>Speech</b>	3	GSP 230 Speech: Public (3) –OR– GSP 235 Speech: Pulpit (3)
	<b>Math Competency</b>	0	GMA 050 Math Competency Test (0)

	<b>Math/Science</b>	3	GMA 110 Finite Math (3) -OR- GMA 120 College Algebra (3) -OR- GSC 210 Biology (3)
	<b>Evidences</b>	3	GPH 110 Evidences (3)
	<b>Humanities Electives</b>	9	<i>Any 100- or 200-level Humanities courses</i>
<b>Ministry Studies</b> 11 Credits	<b>Ministry as Life's Work and Lab</b>	3	MIN 220 Ministry as Life's Work (2) MIN 225 Core Communications (1)
	<b>Cross-Cultural Ministries and Evangelism</b>	3	MMI 120 Missions and Evangelism (3)
	<b>Ministry Electives</b>	5	<i>Any 100- or 200-level Ministry courses</i>

### Typical Schedule for Associate of Arts Degree

Fall Term				Spring Term		
	Course Number	Course Title	#	Course Number	Course Title	#
<b>Year 1</b>	BNT 111	Life of Christ I	3	GPS 110	General Psychology	3
	GEN 110	Composition I	3	BNT 121	Life of Christ II	3
	BIN 110	Intro to Biblical Studies	3	GEN 120	Composition II	3
	MMI 120	Missions and Evangelism	3		Math/Science	3
	GPH 110	Evidences	3	MIN 220	Ministry as Life's Work	2
				MIN 225	Core Communication	1
	<b>Term Total</b>		<b>15</b>	<b>Term Total</b>		<b>15</b>
<b>Year 2</b>	BNT 260	Foundations of Christianity	3	GHI 270	Restoration History	3
	GSP 23X	Speech	3	BOT 216	History of Israel	3
	GMU 210	Introduction to Music	3	GHI 230	Western Civilization II	3
		Ministry Elective	2		Bible Elective	2
		Humanities Elective	3		Ministry Elective	3
		Humanities Elective	3		Humanities Elective	3
	<b>Term Total</b>		<b>17</b>	<b>Term Total</b>		<b>17</b>

Most students at FCC take the same sequence of courses for the first year. During the Spring term of their Freshman year, students declare their desired degree. The second year is determined based upon the student's declaration. When students deviate from the recommended schedule they might not be able to graduate within the two years.



## **Bachelor Programs**

FCC offers three Bachelor degrees: Bachelor of Arts, Bachelor of Science, and Bachelor of Theology. Credits earned in the Associate of Arts program may be applied to the completion of bachelor programs. The Bachelor of Arts and the Bachelor of Science may be regarded as terminal. The Bachelor of Arts degree may also be regarded as preparatory for the Bachelor of Theology degree and graduate studies.

### ***Bachelor of Science***

Objectives: After completing the Bachelor of Science program at FCC, students should . . .

1. be able to interact with their culture analytically, socially, and spiritually.
2. appreciate the message of the Bible in its historic context.
3. understand the process of canonization, transmission, and translation of the Bible.
4. have the skills necessary for the proper interpretation of the Bible.
5. be able to state systematically the great doctrines of the Bible.
6. be equipped to defend the Biblical revelation against rival claims and hostile attacks.
7. be competent to begin vocational ministry.

### ***Bachelor of Arts***

Objectives: The Bachelor of Arts degree differs from the Bachelor of Science degree only in respect to the Biblical language requirement. Students who anticipate furthering their education in graduate seminary usually choose this program. If the Bachelor of Arts degree is pursued, students should . . .

1. be able to interact with their culture analytically, socially, and spiritually.
2. appreciate the message of the Bible in its historic context.
3. understand the process of canonization, transmission and translation of the Bible.
4. have the skills necessary for the proper interpretation of the Bible.
5. be able to state systematically the great doctrines of the Bible.
6. be equipped to defend the Biblical revelation against rival claims and hostile attacks.
7. be competent to begin vocational ministry.
8. demonstrate an understanding of the basic principles of Hebrew/Greek grammar and syntax.
9. use grammatical principles to translate and interpret.
10. appreciate the fact that a basic grasp of the original languages enables one to understand more fully the deep issues God's Word.

## ***Humanities Requirements***

Students completing the Bachelor of Science and Bachelor of Arts degrees complete the following General Studies Requirements:

<b>General Education</b>		<b>45 Credits</b>			
	<b>Requirement</b>	<b>#</b>	<b>Courses</b>	<b>#</b>	
	<b>Composition</b>	6	GEN 110 Composition I GEN 120 Composition II	3 3	
	<b>Social Science</b>	3	GPS 110 General Psychology -OR- GSO 220 Introduction to Sociology	3 3	
	<b>Restoration History</b>	3	GHI 270 Restoration History	3	
	<b>History</b>	3	GHI 220 Western Civilization I -OR- GHI 230 Western Civilization II	3 3	
	<b>Fine Arts</b>	3	GMU 210 Intro. to Music (3) -OR- GDR 110 Drama I (1) + GDR 115 Drama II (2)	3 3	
	<b>Speech</b>	3	GSP 235 Speech: Pulpit -OR- GSP 230 Speech: Public	3 3	
	<b>Math Competency</b>	0	GMA 050 Math Competency Test -OR- <i>Students demonstrate competency at enrollment*</i>	0	
	<b>Math/Science</b>	3	<i>Choose one</i> GMA 110 Finite Math GMA 120 College Algebra GSC 210 General Biology	3 3 3	
	<b>Evidences</b>	3	GPH 110 Evidences	3	
	<b>Apologetics</b>	3	GPH 410 Apologetics	3	
	<b>Philosophy Elective</b>	3	<i>Any 3-hour GPH course</i>	3	
	<b>Bachelor of Arts Electives</b>	<b>Humanities Elective</b>	3	<i>Any qualifying Humanities courses</i>	3
		<b>Biblical Language</b>	9	GLA 326 Greek II (3) GLA 335 Greek III (3) GLA 346 Greek IV (3) -OR- GLA 322 Hebrew II (3) GLA 331 Hebrew III (3) GLA 341 Hebrew IV (3)	3 3 3 3 3 3
<b>Bachelor of Science Electives</b>	<b>History Elective</b>	3	<i>Any 3 hour GHI course</i>	3	
	<b>Humanities Electives</b>	9	<i>Any Humanities courses</i>	9	

**\*Math Competency:** Students may demonstrate math competency by meeting a variety of criteria. This includes a satisfactory score on the math portions of the SAT or ACT tests, transfer of credit of *any* math course, or successfully passing the math competency test.

## ***Bible Major***

All students receiving a Bachelor's degree from Florida Christian College are required to choose two majors. The Bible major may be thirty or forty semester hours, depending upon the specific program chosen. The program descriptions will include the specific requirements for that degree.

Those students who desire the one-year Bachelor of Theology program are required to complete an additional 16 hours in Bible beyond the Bible major in the Bachelor of Arts program. Students desiring to complete the two-year Bachelor of Theology program must complete forty semester hours of Bible.

<b>Bible Majors</b>					
<b>30 hour major</b>	<b>Requirement</b>	<b>#</b>	<b>Courses</b>	<b>#</b>	
	<b>Bible Introduction</b>	3	Introduction to Biblical –OR– Study Bible Survey	3 3	
	<b>Biblical Languages</b>	3	BIN 230 Introduction to Biblical Languages	3	
	<b>Gospels</b>	3	Life of Christ I -OR- Life of Christ II		
	<b>Church History</b>	3	Foundation of Christianity		
	<b>Bible History</b>	3 3 6	<i>Choose two:</i> Foundations of Hebrew History History of Israel Seminar in Genesis (2) + Biblical Research (1)* Seminar in Samuel (2) + Biblical Research (1)* Seminar in Kings(2) + Biblical Research (1)*	3 3 3 3 3 3	
	<b>Theology</b>	3	Introduction to Theology	3	
	<b>Bible/Theology Elective</b>	9	<i>Any BNT, BOT, or BTH courses</i>		
	<b>40 hour major</b> <i>Includes all of the above plus the following</i>	<b>Theology</b>	3	Pauline Theology	3
		<b>OT Prophets Elective</b>	3	<i>Choose one</i> Wisdom Literature Ezekiel and Daniel Minor Prophets Jeremiah (2) + Biblical Research (1)* Isaiah (2) + Biblical Research (1)* Amos and Hosea (2) + Biblical Research (1)* Postexilic Prophets (2) + Biblical Research (1)*	3 3 3 3 3 3 3
<b>Epistles Electives</b>		4	<i>Any BNT courses covering the New Testament Epistles</i>		

**\*Biblical or Theological Research.** Students who need three credits to meet a requirement may be permitted to enroll in a Biblical or Theological Research course. These courses yield one hour of credit. They must be taken in conjunction with a regular lecture course in the required subject area (e.g., prophets, Bible history) that yields two credits. A Biblical or Theological research course consists of producing a research paper on an assigned topic related to the lecture course to which it is attached. The student is graded independently for the research

component. The arrangements for these research courses can be made through the Chair of the Bible Division. Example: A person who needs three credits in Prophets takes Jeremiah (2) plus Biblical Research (1).

### ***Bachelor of Science in Bible***

**Description:** This program is designed to build on an Associate of Arts degree from a secular college. Students with an Associate of Arts from a Bible college will have their program customized according to the courses taken as part of the Associate of Arts degree. Student must have at least a 2.0 GPA in order to graduate.

**Objectives:** Upon completion of this program, the student will . . .

1. Be able to place his secular education into a Biblical perspective for ministry.
2. Be able to systematically state the great doctrines of the Bible.
3. Be equipped to defend the Biblical revelation against rival claims and hostile attacks.
4. Be competent to serve in vocational ministry.
5. Have the Biblical foundation to begin seminary.
6. Be able to use grammatical principles to translate and interpret the Word of God.
7. Appreciate the fact that a basic grasp of the original language enables one to understand more fully the deep issues of the Word of God.
8. Have practical abilities to lead the church in preaching/teaching and administration.
9. Be able to demonstrate knowledge of the principles of effective communication and thinking.

**Program Requirements:**

<b>Bible Major</b> 40 Credits	<b>Bible Introduction</b>	3	BIN 110 Intro. to Biblical Study (3) -OR- BIN 112 Bible Survey (3)
	<b>Bible Languages</b>	3	BIN 230 Intro to Biblical Language
	<b>Gospels</b>	3	BNT 111 Life of Christ I (3) -OR- BNT 121 Life of Christ II (3)
	<b>Church History</b>	3	BNT 260 Foundations of Christianity (3)
	<b>Old Testament History</b>	3	BOT 216 Foundations of Hebrew History (3) -OR- BOT 211 History of Israel (3)
	<b>Bible History Elective</b>	3	<i>See page 34</i>
	<b>Epistles</b>	3	<i>Any BNT courses covering the New Testament Epistles</i>
	<b>Prophets</b>	3	<i>Choose one</i> BOT 233 Wisdom Literature (3) BOT 315 Ezekiel and Daniel (3) BOT 321 Minor Prophets (3) BOT 241 Jeremiah (2) + Biblical Research (1)* BOT 244 Isaiah (2) + Biblical Research (1)* BOT 251 Amos and Hosea (2) + Biblical Research (1)* BOT 254 Postexilic Prophets (2) + Biblical Research (1)*
	<b>Theology</b>	6	BTH 321 Introduction to Theology (3) BTH 411 Pauline Theology (3)
	<b>Bible Electives</b>	10	<i>Any BIN, BNT, BOT, or BTH courses</i>

	<b>FCC Bible Comp</b>	0	<i>Student may take the test during Senior Year</i>
<b>General Education</b> 12 Credits	<b>Evidences</b>	3	GPH 110 Evidences (3)
	<b>Philosophy</b>	3	<i>Any 3-hour GPH course</i>
	<b>Humanities Elective</b>	6	<i>Any qualifying Humanities courses</i>
	<i>Humanities Note: It is assumed that the student will have completed all general education requirements in the Associate of Arts degree. If all requirements are not met, course deficiencies will be added to this program before graduation.</i>		
<b>Ministry Emphasis</b> 19 Credits	<b>Ministry Core</b>	3	MMI 120 Missions and Evangelism (3)
	<b>Ministry Emphasis</b>	12	MCO 210 Introduction to Counseling (3) MIN 310 Models of Leadership (3) MPR 330 Church Administration (3) MCE 350 Minister as Educator (3)
	<b>Ministry Electives</b>	4	Any qualifying ministry electives
	<i>Ministry Note: No internship is required for this program.</i>		

## ***Bachelor of Art in Bible and Humanities***

(135 semester hour degree: Bible - 30 hours; General Studies - 45 hours; and Ministerial Studies - 60 hours)

**Purpose:**

The two-fold purpose of the Bible and Humanities degree emphasis is to provide opportunity for advanced studies in philosophy, literature, and history, and to prepare students for graduate programs in Christian leadership. The program is based upon the assumption that effectiveness in ministry is enhanced by familiarity with the intellectual and historical conditions of one's culture.

**Objectives:** The Bible and Humanities program aims to equip graduates to . . .

1. Think clearly and systematically about the enduring questions relating to knowledge of the world and human activity.
2. Relate American and Western intellectual history to Christian theology and ministry.
3. Think, read, and write at a level appropriate to graduate study.
4. Defend Biblical Christianity against a wide range of present intellectual challenges.

**Course Requirements:**

<b>Bible Major</b> 30 Credits	<b>Bible Introduction</b>	3	BIN 110 Introduction to Biblical Studies (3) –OR– BIN 112 Bible Survey (3)
	<b>Biblical Languages</b>	3	BIN 230 Intro to Biblical Languages (3)
	<b>Gospels</b>	3	BNT 111 Life of Christ I (3) or BNT 121 Life of Christ II (3)
	<b>Church History</b>	3	BNT 260 Foundation of Christianity (3)
	<b>Bible History</b>	6	Choose two BOT 216 Foundations of Hebrew History (3) BOT 211 History of Israel (3) BOT 220 Seminar in Genesis (2) + Biblical Research (1)* BOT 225 Seminar in Samuel (2) + Biblical Research (1)* BOT 226 Seminar in Kings(2) + Biblical Research (1)*
	<b>Theology</b>	3	BTH 321 Introduction to Theology (3)
	<b>Bible/Theology Elective</b>	9	<i>Any BNT, BOT, or BTH courses</i>
	<b>FCC Bible Comp</b>	0	<i>Student may take the test during Senior Year</i>
<b>General Education</b> 45 Credits	<b>Composition</b>	6	GEN 110 Composition I (3) GEN 120 Composition II (3)
	<b>Social Science</b>	3	GPS 110 General Psychology (3) –OR– GSO 220 Introduction to Sociology (3)
	<b>Evidences</b>	3	GPH 110 Evidences (3)
	<b>Restoration History</b>	3	GHI 270 Restoration History (3)
	<b>History</b>	3	GHI 220 Western Civilization I (3) –OR– GHI 230 Western Civilization II (3)

	<b>Fine Arts</b>	3	GMU 210 Intro. to Music (3) –OR– GDR 110 Drama I (1) + GDR 115 Drama II (2)
	<b>Speech</b>	3	GSP 235 Speech: Pulpit (3) –OR– GSP 230 Speech: Public (3)
	<b>Math Competency</b>	0	GMA 050 Math Competency Test (0) –OR– <i>Students demonstrate competency at enrollment</i>
	<b>Math/Science</b>	3	<i>Choose one</i> GMA 110 Finite Math (3) GMA 120 Algebra (3) GSC 210 Biology (3)
	<b>Apologetics</b>	3	GPH 410 Apologetics (3)
	<b>Philosophy Elective</b>	3	<i>Choose from GPH courses</i>
	<b>Humanities Elective</b>	3	<i>Any qualifying Humanities courses</i>
	<b>Bible Language</b>	9	GLA 326 Greek II (3) GLA 335 Greek III (3) GLA 346 Greek IV (3) –OR– GLA 322 Hebrew II (3) GLA 331 Hebrew III (3) GLA 341 Hebrew IV (3)
<b>Humanities Major</b> 42 Credits	<b>Advanced Writing</b>	2	GEN 310 Advanced Research and Writing (2)
	<b>Philosophy Block</b>	12	<i>Choose from GPH courses</i>
	<b>Literature Block</b>	12	<i>Choose from GLT courses</i>
	<b>History Block</b>	6	<i>Choose from GHI courses</i>
	<b>Electives</b>	10	<i>Choose from</i> BIN 310 Canonics (2) BIN 320 Inspiration and Inerrancy (3) <i>Or any other Humanities courses not taken to meet the above requirements</i>
<b>Ministry Division</b> 18 Credits	<b>Cross-Cultural Ministries</b>	3	MMI 120 Missions and Evangelism (3)
	<b>General Ministry</b>	6	MIN 220 Ministry as Life's Work (2) MIN 225 Core Communication (1) MIN 310 Models of Leadership (3)
	<b>Counseling</b>	3	MCO 210 Introduction to Counseling (3)
	<b>Education Elective</b>	3	<i>Any MCE course</i>
	<b>Administration</b>	3	MPR 330 Church Administration (3)
<i>Ministry Note: Students must maintain a 2.5 cumulative GPA for courses in the Ministry Division to graduate with this specialization. No internship is required for this program.</i>			



**Typical Schedule for Bachelor of Arts in Bible and Humanities Degree**

		Fall Term			Spring Term		
	Course Number	Course Title	#	Course Number	Course Title	#	
<b>Year 1</b>	BNT 111	Life of Christ I	3	BNT 121	Life of Christ II	3	
	GEN 110	Composition I	3	<i>B__</i>	<i>Bible Elective</i>	2	
	MIN 110	Missions & Evangelism	3	GPS 110	General Psychology	3	
	GPH 110	Evidences	3	GEN 120	Composition II	3	
	BIN 110	Intro to Biblical Studies	3	GSC 210	General Biology	3	
	MIN 225	Core Communication	1	MIN 220	Ministry as Life's Work	2	
	<b>Term Total</b>			<b>16</b>	<b>Term Total</b>		
<b>Year 2</b>	BNT 220	Foundations of Christianity	3	MCO 210	Introduction to Counseling	3	
	GSP 23x	Speech	3	GHI 270	Restoration History	3	
	GHI 220	Western Civilization I	3	<i>GPH</i>	<i>Philosophy Elective</i>	3	
	BOT 216	Found. Of Hebrew History	3	<i>G__</i>	<i>Humanities Elective</i>	6	
	GMU 210	Introduction to Music	3	<i>B__</i>	<i>Bible Elective</i>	2	
	<i>B__</i>	<i>Bible Elective</i>	2				
<b>Term Total</b>			<b>17</b>	<b>Term Total</b>			
<b>Year 3</b>	BIN 230	Intro Biblical Languages	3	BCE 421	Bible Comp Test	0	
	BTH 321	Introduction to Theology	3	<i>B__</i>	<i>Bible Elective</i>	3	
	GEN 310	Advncd Writing & Research	2	MIN 310	Models of Leadership	3	
	<i>MCE</i>	<i>Education Elective</i>	3	<i>GLA</i>	<i>Biblical Language I</i>	3	
		<i>Humanities Electives</i>	6	MPR 330	Church Administration	3	
					<i>Humanities Electives</i>	5	
<b>Term Total</b>			<b>17</b>	<b>Term Total</b>			
<b>Year 4</b>	<i>GLA</i> GPH 410	<i>Biblical Language II</i> Apologetics <i>Humanities Electives</i>	3 3 12	<i>GLA</i>	<i>Biblical Language III</i> <i>Humanities Electives</i>	3 14	
	<b>Term Total</b>			<b>18</b>	<b>Term Total</b>		

### ***Bachelor Programs in Christian Ministries***

The Christian Ministries Major is one of two ministry majors available at FCC. There are six specializations available with a Christian Ministries Major: Preaching, Cross-Cultural Ministries, Youth and Family Life Ministries, Counseling, Music Ministry, and General Ministry. The following pages provide the purpose, objectives, and course requirements for each specialization in the Christian Ministries Major.

Ministry Division Core Courses for Division (6 credits) MMI 120 Missions and Evangelism (3) MIN 220 Ministry as Life's Work (2) MIN 225 Core Communication (1)					
Christian Ministry Major Core Courses for Major (12 credits) MPR 330 Church Administration (3) MCO 210 Introduction to Counseling (3) MCE 350 Minister as Educator (3) MIN 310 Models of Leadership (3)					
	<i>Specialization:</i> <b>Preaching</b> Bachelor of Arts	<i>Specialization:</i> <b>Cross-Cultural Ministries</b> Bachelor of Arts	<i>Specialization:</i> <b>Youth and Family</b> Bachelor of Arts or Bachelor of Science	<i>Specialization:</i> <b>Counseling</b> Bachelor of Science	<i>Specialization:</i> <b>Music Ministry</b> Bachelor of Science
<b>Bible</b>	40	40	40	30	30
<b>Humanities</b>	45	45	45	45	45
<b>Specialization</b>	50	50	50	60	60
<b>Ministry Core</b>	6	6	6	6	6
<b>Major Core</b>	12	12	12	12	12
<b>Specialization</b>	12	13	14	21	19
<b>Electives</b>	8	7	6	9	11
<b>Internship</b>	12	12	12	12	12

### ***Declaring a Ministry Major***

The first major for all students is Bible. The student chooses the ministry major from two available majors: Christian Ministries and Christian Education Ministries. Students usually declare their major during the spring term of their Freshman year.

The purpose of the Division of Ministerial Studies at Florida Christian College is to assist the student in the formation of the character, attitudes, and skills necessary to provide leadership for church-related ministry.

The division emphasizes the church as the primary agency for accomplishing the mandate of the Great Commission of Christ. Therefore, the division seeks to equip the student in integrating the content of the Bible into the practice of leadership ministry in such areas as Cross-Cultural Ministries, preaching, teaching, pastoral care, and other specialized areas of service. The division is committed to challenging the student to provide a ministry that is "strong in the scriptures" and sensitive to the needs of people.

Objectives: When students complete the required courses in a designated major from the Division of Ministerial Studies, they should be able to . . .

1. apply Biblical principles in the practice of church-related ministry.
2. communicate effectively the Word of God.
3. model character and leadership ability consistent with the mind and attitude of Christ.
4. demonstrate proficiency in a designated area of leadership ministry.
5. reach the lost with the gospel of Christ effectively and compassionately.
6. practice relationship building skills.
7. function effectively in an administrative role.

## ***Bachelor of Arts in Christian Ministries, Specialization: Preaching***

(135 semester hour degree: Bible - 40 hours; General Studies - 45 hours; and Ministerial Studies - 50 hours)

**Purpose:** The purpose of the preaching specialization is to assist the student in the formation of the character, attitude, and skills necessary to function as a preaching minister.

**Objectives:** The preaching specialty is designed to equip a student to . . .

1. develop the skill of preparing and delivering sermons or lessons.
2. equip others in furthering the church's mission.
3. proclaim the Christian message with accuracy, confidence, and competence.
4. direct special worship services, weddings, funerals, and other special programs of the church.
5. manage personal life in such matters as personal finances, proper use of time, physical and emotional well-being, family and social relationships, and personal appearance.
6. employ appropriate models and strategies of ministry.

### Course Requirements:

<b>Bible Major</b> 40 Credits	<b>Bible Introduction</b>	3	BIN 110 Introduction to Biblical Studies (3) –OR– BIN 112 Bible Survey (3)
	<b>Biblical Languages</b>	3	BIN 230 Intro to Biblical Languages (3)
	<b>Gospels</b>	3	BNT 111 Life of Christ I (3) or BNT 121 Life of Christ II (3)
	<b>Church History</b>	3	BNT 260 Foundation of Christianity (3)
	<b>Bible History</b>	6	<i>Choose two</i> BOT 216 Foundations of Hebrew History (3) BOT 211 History of Israel (3) BOT 220 Seminar in Genesis (2) + Biblical Research (1)* BOT 225 Seminar in Samuel (2) + Biblical Research (1)* BOT 226 Seminar in Kings(2) + Biblical Research (1)*
	<b>Theology</b>	6	BTH 321 Introduction to Theology (3) BTH 411 Pauline Theology (3)
	<b>Bible/Theology Electives</b>	9	<i>Any BNT, BOT, or BTH courses</i>
	<b>OT Prophets Elective</b>	3	<i>Choose one</i> BOT 233 Wisdom Literature (3) BOT 315 Ezekiel and Daniel (3) BOT 321 Minor Prophets (3) BOT 241Jeremiah (2) + Biblical Research (1)* BOT 244 Isaiah (2) + Biblical Research (1)* BOT 251 Amos and Hosea (2) + Biblical Research (1)* BOT 254 Postexilic Prophets (2) + Biblical Research (1)*
	<b>Epistles Electives</b>	4	<i>Any BNT courses covering the New Testament Epistles</i>
	<b>FCC Bible Comp</b>	0	<i>Student may take the test during Senior Year</i>
<b>Humanities Division</b> 45 Credits	<b>Composition</b>	6	GEN 110 Composition I (3) GEN 120 Composition II (3)
	<b>Social Science</b>	3	GPS 110 General Psychology (3) –OR– GSO 220 Introduction to Sociology (3)

	<b>Evidences</b>	3	GPH 110 Evidences (3)
	<b>Restoration History</b>	3	GHI 270 Restoration History (3)
	<b>History</b>	3	GHI 220 Western Civilization I (3) –OR– GHI 230 Western Civilization II (3)
	<b>Fine Arts</b>	3	GMU 210 Intro. to Music (3) –OR– GDR 110 Drama I (1) + GDR 115 Drama II (2)
	<b>Speech</b>	3	GSP 235 Speech: Pulpit (3) –OR– GSP 230 Speech: Public (3)
	<b>Math Competency</b>	0	GMA 050 Math Competency Test (0) –OR– <i>Students demonstrate competency at enrollment</i>
	<b>Math/Science</b>	3	<i>Choose one</i> GMA 110 Finite Math (3) GMA 120 Algebra (3) GSC 210 Biology (3)
	<b>Apologetics</b>	3	GPH 410 Apologetics (3)
	<b>Philosophy Elective</b>	3	<i>Any 3-hour GPH course</i>
	<b>Humanities Elective</b>	3	<i>Any qualifying Humanities courses</i>
	<b>Biblical Language</b>	9	GLA 326 Greek II (3) GLA 335 Greek III (3) GLA 346 Greek IV (3) –OR– GLA 322 Hebrew II (3) GLA 331 Hebrew III (3) GLA 341 Hebrew IV (3)
<b>Ministry Major</b> 50 Credits <i>Note: Students must maintain a 2.5 cumulative GPA for courses in the Ministry Major to graduate with this specialization</i>	<b>Ministry Core</b>	6	MMI 120 Missions and Evangelism (3) MIN 220 Ministry as Life's Work (2) MIN 225 Core Communication (1)
	<b>Major Core</b>	12	MCO 210 Introduction to Counseling (3) MIN 310 Models of Leadership (3) MPR 330 Church Administration (3) MCE 350 Minister as Educator (3)
	<b>Specialization Core</b>	12	MPR 310 Preaching and Interpretation (3) MPR 320 Art of Preaching (3) MPR 340 Christian Ministry (3) MMU 210 Worship Leadership (1) MCO 370 Marriage and Family Enrichment (2)
	<b>Electives</b>	8	<i>Choose any qualifying MCE, MCO, MEC, MIN, MMI, MMU, MPR, MTH, or MYM courses. Pre-requisites &amp; co-requisites apply.</i>
	<b>Ministry Internship</b>	12	MIN 391 Preparation A (1) MIN 392 Preparation B (1) MIN 398 Part Time Field Experience (9) –OR– MIN 396 Full Time Field Experience (6) + <i>Ministry Elective</i> (3) MIN 393 Debriefing (1)

***Bachelor of Arts in Christian Ministries, Specialization:  
 Cross-Cultural Ministries***

(135 semester hour degree: Bible - 40 hours; General Studies - 45 hours; and Ministerial Studies - 50 hours)

Purpose: The purpose of the Cross-Cultural Ministries Specialization is to assist the student in the formation of the character, attitudes, and skills necessary to initiate ministry in a cross-cultural setting. The student is prepared to minister across cultural barriers to make disciples, incorporating them into the church and teaching them the precepts of Jesus.

Objectives: The graduate in Cross-Cultural Ministries should be able to . . .

1. articulate the Biblical basis of mission.
2. outline the history of missions.
3. understand the various strategies of missions.
4. analyze and adapt to the targeted culture for ministry.
5. discuss intelligently the current issues in missions work.
6. understand several models of cross-cultural leadership development.
7. gain field experience by becoming involved in a mission work.

**Course Requirements:**

<b>Bible Major</b> 40 Credits	<b>Bible Introduction</b>	3	BIN 110 Introduction to Biblical Studies (3) –OR– BIN 112 Bible Survey (3)
	<b>Biblical Languages</b>	3	BIN 230 Intro to Biblical Languages (3)
	<b>Gospels</b>	3	BNT 111 Life of Christ I (3) or BNT 121 Life of Christ II (3)
	<b>Church History</b>	3	BNT 260 Foundation of Christianity (3)
	<b>Bible History</b>	6	<i>Choose two</i> BOT 216 Foundations of Hebrew History (3) BOT 211 History of Israel (3) BOT 220 Seminar in Genesis (2) + Biblical Research (1)* BOT 225 Seminar in Samuel (2) + Biblical Research (1)* BOT 226 Seminar in Kings(2) + Biblical Research (1)*
	<b>Theology</b>	6	BTH 321 Introduction to Theology (3) BTH 411 Pauline Theology (3)
	<b>Bible/Theology Elective</b>	9	<i>Any BNT, BOT, or BTH courses</i>
	<b>OT Prophets Elective</b>	3	<i>Choose one</i> BOT 233 Wisdom Literature (3) BOT 315 Ezekiel and Daniel (3) BOT 321 Minor Prophets (3) BOT 241Jeremiah (2) + Biblical Research (1)* BOT 244 Isaiah (2) + Biblical Research (1)* BOT 251 Amos and Hosea (2) + Biblical Research (1)* BOT 254 Postexilic Prophets (2) + Biblical Research (1)*
	<b>Epistles Electives</b>	4	<i>Any BNT courses covering the New Testament Epistles</i>
	<b>FCC Bible Comp</b>	0	<i>Student may take the test during Senior Year</i>
<b>General</b>	<b>Composition</b>	6	GEN 110 Composition I (3) GEN 120 Composition II (3)

<b>Education</b> 45 Credits	<b>Social Science</b>	3	GPS 110 General Psychology (3) –OR– GSO 220 Introduction to Sociology (3)
	<b>Evidences</b>	3	GPH 110 Evidences (3)
	<b>Restoration History</b>	3	GHI 270 Restoration History (3)
	<b>History</b>	3	GHI 220 Western Civilization I (3) –OR– GHI 230 Western Civilization II (3)
	<b>Fine Arts</b>	3	GMU 210 Intro. to Music (3) –OR– GDR 110 Drama I (1) + GDR 115 Drama II (2)
	<b>Speech</b>	3	GSP 235 Speech: Pulpit (3) –OR– GSP 230 Speech: Public (3)
	<b>Math Competency</b>	0	GMA 050 Math Competency Test (0) –OR– <i>Students demonstrate competency at enrollment</i>
	<b>Math/Science</b>	3	<i>Choose one</i> GMA 110 Finite Math (3) GMA 120 Algebra (3) GSC 210 Biology (3)
	<b>Apologetics</b>	3	GPH 410 Apologetics (3)
	<b>Philosophy Elective</b>	3	<i>Any 3-hour GPH course</i>
	<b>Humanities Elective</b>	3	<i>Any qualifying Humanities courses</i>
	<b>Biblical Language</b>	9	GLA 326 Greek II (3) GLA 335 Greek III (3) GLA 346 Greek IV (3) –OR– GLA 322 Hebrew II (3) GLA 331 Hebrew III (3) GLA 341 Hebrew IV (3)
<b>Ministry Major</b> 50 Credits <i>Note: Students must maintain a 2.5 cumulative GPA for courses in the Ministry Major to graduate with this Specialization.</i>	<b>Ministry Core</b>	6	MMI 120 Missions and Evangelism (3) MIN 220 Ministry as Life's Work (2) MIN 225 Core Communication (1)
	<b>Major Core</b>	12	MCO 210 Introduction to Counseling (3) MIN 310 Models of Leadership (3) MPR 330 Church Administration (3) MCE 350 Minister as Educator (3)
	<b>Specialization Core</b>	13	MMI 320 Preparation for Mission Service (2) MMI 340 World Religions (2) MMI 360 Cultural Anthropology (3) MMI 470 Strategies for World Evangelism (3) MMI 380 Theology of Missions (3)
	<b>Electives</b>	7	<i>Choose any qualifying MCE, MCO, MEC, MIN, MMI, MMU, MPR, MTH, or MYM courses. Pre-requisites &amp; co-requisites apply.</i>
	<b>Ministry Internship</b>	12	MIN 391 Preparation A (1) MIN 392 Preparation B (1) MIN 398 Part Time Field Experience (9) –OR– MIN 396 Full Time Field Experience (6) + <i>Ministry Elective</i> (3) MIN 393 Debriefing (1)

***Bachelor of Arts or Science in Christian Ministries,  
 Specialization: Youth and Family Life Ministry***

(135 semester hour degree: Bible - 40 hours; General Studies - 45 hours; and Ministerial Studies - 50 hours)

**Purpose:** The Youth and Family Life Ministry Specialization is designed to prepare the student to function effectively in family ministries of the church. The family is emphasized as the agency for providing holistic care to children and youth. This specialty emphasizes the role of the church as the family of God. It is designed for the person 1) who desires to function as a youth minister or family life minister, 2) who desires to enhance the quality of home life, or 3) who desires to complete a graduate program in Marriage and Family.

**Objectives:** This specialty is designed to help the student . . .

1. articulate a biblical perspective of marriage and the family.
2. formulate strategies for the development of a family life ministry in the church.
3. demonstrate a basic knowledge of marriage and family theory and dynamics.
4. develop the skills to train family members to communicate effectively, resolve conflict, and build each other up.
5. form a philosophy for ministry to children and youth through the family.

**Course Requirements:**

<b>Bible Major</b> 40 Credits	<b>Bible Introduction</b>	3	BIN 110 Introduction to Biblical Studies (3) –OR– BIN 112 Bible Survey (3)
	<b>Biblical Languages</b>	3	BIN 230 Intro to Biblical Languages (3)
	<b>Gospels</b>	3	BNT 111 Life of Christ I (3) or BNT 121 Life of Christ II (3)
	<b>Church History</b>	3	BNT 260 Foundation of Christianity (3)
	<b>Bible History</b>	6	<i>Choose two</i> BOT 216 Foundations of Hebrew History (3) BOT 211 History of Israel (3) BOT 220 Seminar in Genesis (2) + Biblical Research (1)* BOT 225 Seminar in Samuel (2) + Biblical Research (1)* BOT 226 Seminar in Kings(2) + Biblical Research (1)*
	<b>Theology</b>	6	BTH 321 Introduction to Theology (3) BTH 411 Pauline Theology (3)
	<b>Bible/Theology Elective</b>	9	<i>Any BNT, BOT, or BTH courses</i>



	<b>OT Prophets Elective</b>	3	<i>Choose one</i> BOT 233 Wisdom Literature (3) BOT 315 Ezekiel and Daniel (3) BOT 321 Minor Prophets (3) BOT 241Jeremiah (2) + Biblical Research (1)* BOT 244 Isaiah (2) + Biblical Research (1)* BOT 251 Amos and Hosea (2) + Biblical Research (1)* BOT 254 Postexilic Prophets (2) + Biblical Research (1)*
	<b>Epistles Electives</b>	4	<i>Any BNT courses covering the New Testament Epistles</i>
	<b>FCC Bible Comp</b>	0	<i>Student may take the test during Senior Year</i>
<b>General Education</b> 45 Credits	<b>Composition</b>	6	GEN 110 Composition I (3) GEN 120 Composition II (3)
	<b>Social Science</b>	3	GPS 110 General Psychology (3) –OR– GSO 220 Introduction to Sociology (3)
	<b>Evidences</b>	3	GPH 110 Evidences (3)
	<b>Restoration History</b>	3	GHI 270 Restoration History (3)
	<b>History</b>	3	GHI 220 Western Civilization I (3) –OR– GHI 230 Western Civilization II (3)
	<b>Fine Arts</b>	3	GMU 210 Intro. to Music (3) –OR– GDR 110 Drama I (1) + GDR 115 Drama II (2)
	<b>Speech</b>	3	GSP 235 Speech: Pulpit (3) –OR– GSP 230 Speech: Public (3)
	<b>Math Competency</b>	0	GMA 050 Math Competency Test (0) –OR– <i>Students demonstrate competency at enrollment</i>
	<b>Math/Science</b>	3	<i>Choose one</i> GMA 110 Finite Math (3) GMA 120 Algebra (3) GSC 210 Biology (3)
	<b>Apologetics</b>	3	GPH 410 Apologetics (3)
	<b>Philosophy Elective</b>	3	<i>Any 3-hour GPH course</i>
<b>Bachelor of Arts</b>	<b>Humanities Elective</b>	3	<i>Any qualifying Humanities courses</i>
	<b>Biblical Language</b>	9	GLA 326 Greek II (3) GLA 335 Greek III (3) GLA 346 Greek IV (3) –OR– GLA 322 Hebrew II (3) GLA 331 Hebrew III (3) GLA 341 Hebrew IV (3)
<b>Bachelor of Science</b>	<b>History Elective</b>	3	<i>Any 3 hour GHI course</i>
	<b>Humanities Electives</b>	9	<i>Any Humanities courses</i>
<b>Ministry Major</b> 50 Credits <i>Note: Students must maintain a 2.5 cumulative GPA for courses in the</i>	<b>Ministry Core</b>	6	MMI 120 Missions and Evangelism (3) MIN 220 Ministry as Life's Work (2) MIN 225 Core Communication (1)
	<b>Major Core</b>	12	MCO 210 Introduction to Counseling (3) MIN 310 Models of Leadership (3) MPR 330 Church Administration (3) MCE 350 Minister as Educator (3)

<i>Ministry Major to graduate with this Specialization.</i>	<b>Specialization Core</b>	14	MYM 310 Phil. Of Youth Ministry (3) MYM 350 Family Life Ministry (3) MYM 360 Planning & Priorities in Y. M. (3) MCE 420 Program Development Strategies (2) GPS 313 Child & Adol. Develop. Psychology (3)
	<b>Electives</b>	6	<i>Choose any qualifying MCE, MCO, MEC, MIN, MMI, MMU, MPR, MTH, or MYM courses. Pre-requisites &amp; co-requisites apply.</i>
	<b>Ministry or Counseling Internship</b>	12	MIN 391 Preparation A (1) MIN 392 Preparation B (1)
			MIN 398 Part Time Field Experience (9) –OR– MIN 396 Full Time Field Experience (6) + <i>Ministry Elective</i> (3) MIN 393 Debriefing (1)

## ***Bachelor of Science in Christian Ministries, Specialization: Counseling***

(135 semester hour degree: Bible - 30 hours; General Studies - 45 hours; and Ministerial Studies - 60 hours)

Purpose: The Counseling Specialization is designed for the student 1) who desires to function as a discipleship minister, or 2) who desires to pursue graduate work in pastoral counseling, social work, or counseling psychology. Psychological, communication, and counseling concepts and skills are integrated into a theological framework.

Objectives: The counseling specialty helps the student to . . .

1. formulate a model for the integration of the principles of the behavioral sciences into a Biblical theology.
2. demonstrate a basic knowledge of the major assumptions and theories of secular systems of psychology, counseling and communication.
3. develop a basic counseling model with the helping skills necessary for the accomplishment of discipleship ministry through pastoral care and counseling.
4. identify basic behavioral themes of life span development for effective ministry to persons based on their developmental stage.
5. engage in various self-evaluation activities for the assessment and improvement of his or her own helping skills through interpersonal growth.
6. train others in the local church for the pastoral care task.
7. prepare for advanced studies in the behavioral sciences.

### Course Requirements:

<b>Bible Division</b> 30 credits	<b>Bible Introduction</b>	3	BIN 110 Introduction to Biblical Studies (3) –OR– BIN 112 Bible Survey (3)
	<b>Biblical Languages</b>	3	BIN 230 Intro to Biblical Languages (3)
	<b>Gospels</b>	3	BNT 111 Life of Christ I (3) or BNT 121 Life of Christ II (3)
	<b>Church History</b>	3	BNT 260 Foundation of Christianity (3)
	<b>Bible History</b>	6	<i>Choose two</i> BOT 216 Foundations of Hebrew History (3) BOT 211 History of Israel (3) BOT 220 Seminar in Genesis (2) + Biblical Research (1)* BOT 225 Seminar in Samuel (2) + Biblical Research (1)* BOT 226 Seminar in Kings(2) + Biblical Research (1)*
	<b>Theology</b>	3	BTH 321 Introduction to Theology (3)
	<b>Bible/Theology Elective</b>	9	<i>Any BNT, BOT, or BTH courses</i>
	<b>FCC Bible Comp</b>	0	<i>Student may take the test during Senior Year</i>
<b>General</b>	<b>Composition</b>	6	GEN 110 Composition I (3) GEN 120 Composition II (3)

<b>Education</b> 45 Credits <i>Note: Counseling students are encouraged to take statistics as part of their general studies electives in preparation for graduate school.</i>	<b>Social Science</b>	3	GPS 110 General Psychology (3) –OR– GSO 220 Introduction to Sociology (3)
	<b>Evidences</b>	3	GPH 110 Evidences (3)
	<b>Restoration History</b>	3	GHI 270 Restoration History (3)
	<b>History</b>	3	GHI 220 Western Civilization I (3) –OR– GHI 230 Western Civilization II (3)
	<b>Fine Arts</b>	3	GMU 210 Intro. to Music (3) –OR– GDR 110 Drama I (1) + GDR 115 Drama II (2)
	<b>Speech</b>	3	GSP 235 Speech: Pulpit (3) –OR– GSP 230 Speech: Public (3)
	<b>Math Competency</b>	0	GMA 050 Math Competency Test (0) –OR– <i>Students demonstrate competency at enrollment</i>
	<b>Math/Science</b>	3	<i>Choose one</i> GMA 110 Finite Math (3) GMA 120 Algebra (3) GSC 210 Biology (3)
	<b>Apologetics</b>	3	GPH 410 Apologetics (3)
	<b>Philosophy Elective</b>	3	<i>Any 3-hour GPH course</i>
	<b>History Elective</b>	3	<i>Any 3 hour GHI course</i>
<b>Humanities Electives</b>	9	<i>Any Humanities courses</i>	
<b>Ministry Major</b> 60 Credits <i>Note: Students must maintain a 2.5 cumulative GPA for courses in the Ministry Major to graduate with this Specialization.</i>	<b>Ministry Core</b>	6	MMI 120 Missions and Evangelism (3) MIN 220 Ministry as Life's Work (2) MIN 225 Core Communication (1)
	<b>Major Core</b>	12	MCO 210 Introduction to Counseling (3) MIN 310 Models of Leadership (3) MPR 330 Church Administration (3) MCE 350 Minister as Educator (3)
	<b>Specialization Core</b>	21	GSP 310 Personality Theories (3) MTH 310 Integrative Studies in Psy. & Theo (3) GPS 313 Developmental Psychology: Child (3) GPS 317 Developmental Psychology: Adult (3) GPS 320 Abnormal Psychology (3) MTH 315 Forgiveness & Reconciliation (2) MCO 320 Interpersonal Growth (2) MCO 340 Crisis Counseling (2)
	<b>Electives</b>	9	<i>Choose any qualifying MCE, MCO, MEC, MIN, MMI, MMU, MPR, MTH, or MYM courses. Pre-requisites &amp; co-requisites apply.</i>
	<b>Ministry or Counseling Internship</b>	12	MCO 391 Counseling Internship A (1) MIN 392 Preparation B (1) MIN 398 Part Time Field Experience (9) –OR– MIN 396 Full Time Field Experience (6) + <i>Ministry Elective</i> (3) MIN 393 Debriefing (1)

***Bachelor of Science in Christian Ministries, Specialization:  
 Music Ministry***

(135 semester hour degree: Bible - 30 hours; General Studies - 45 hours; and Ministerial Studies - 60 hours)

Purpose: The Music Ministry Specialization is designed to educate students to lead a music ministry in the local church.

Objectives: The Music Ministry program is designed to prepare the student to . . .

1. structure all the music programs in the local church setting.
2. be aware of the opportunities for evangelistic outreach through a church music program.
3. organize and administer a complete graded choir program in the local church setting.
4. organize and administrate traditional and contemporary settings of a worship program.
5. demonstrate keyboard and vocal proficiency through recitals, jury sessions, and worship projects.
6. choose and direct the musical selections for any age-level musical ensemble.
7. provide basic music accompaniment for the choral presentations of any age group.
8. be competent in directing singing for all groups in the church settings.
9. enlist and train music leadership personnel for choirs and instrumental programs.
10. have basic understanding of organizing, administering, and conducting techniques for choral and instrumental music programs.

**Course Requirements**

<b>Bible Division</b> 30 credits	<b>Bible Introduction</b>	3	BIN 110 Introduction to Biblical Studies (3) –OR– BIN 112 Bible Survey (3)
	<b>Biblical Languages</b>	3	BIN 230 Intro to Biblical Languages (3)
	<b>Gospels</b>	3	BNT 111 Life of Christ I (3) or BNT 121 Life of Christ II (3)
	<b>Church History</b>	3	BNT 260 Foundation of Christianity (3)
	<b>Bible History</b>	6	<i>Choose two</i> BOT 216 Foundations of Hebrew History (3) BOT 211 History of Israel (3) BOT 220 Seminar in Genesis (2) + Biblical Research (1)* BOT 225 Seminar in Samuel (2) + Biblical Research (1)* BOT 226 Seminar in Kings(2) + Biblical Research (1)*
	<b>Theology</b>	3	BTH 321 Introduction to Theology (3)
	<b>Bible/Theology Elective</b>	9	<i>Any BNT, BOT, or BTH courses</i>
	<b>FCC Bible Comp</b>	0	<i>Student may take the test during Senior Year</i>
<b>General</b>	<b>Composition</b>	6	GEN 110 Composition I (3) GEN 120 Composition II (3)

<b>Education</b> 45 Credits	<b>Social Science</b>	3	GPS 110 General Psychology (3) –OR– GSO 220 Introduction to Sociology (3)
	<b>Evidences</b>	3	GPH 110 Evidences (3)
	<b>Restoration History</b>	3	GHI 270 Restoration History (3)
	<b>History</b>	3	GHI 220 Western Civilization I (3) –OR– GHI 230 Western Civilization II (3)
	<b>Fine Arts</b>	3	MMU 380 Music History and Lit. I (3)
	<b>Speech</b>	3	GSP 235 Speech: Pulpit (3) –OR– GSP 230 Speech: Public (3)
	<b>Math Competency</b>	0	GMA 050 Math Competency Test (0) –OR– <i>Students demonstrate competency at enrollment</i>
	<b>Math/Science</b>	3	<i>Choose one</i> GMA 110 Finite Math (3) GMA 120 Algebra (3) GSC 210 Biology (3)
	<b>Apologetics</b>	3	GPH 410 Apologetics (3)
	<b>Philosophy Elective</b>	3	<i>Any 3-hour GPH courses</i>
	<i>History Elective</i>	3	<i>Any 3 hour GHI course</i>
<b>Humanities Electives</b>	9	<i>Any Humanities courses</i>	
<b>Ministry Major</b> 60 Credits <i>Note: Students must maintain a 2.5 cumulative GPA for courses in the Ministry Major to graduate with this Specialization.</i>	<b>Ministry Core</b>	6	MMI 120 Missions and Evangelism (3) MIN 220 Ministry as Life's Work (2) MIN 225 Core Communication (1)
	<b>Major Core</b>	12	MCO 210 Introduction to Counseling (3) MIN 310 Models of Leadership (3) MPR 330 Church Administration (3) MCE 350 Minister as Educator (3)
	<b>Music Theory Intro</b>	(0)	MMU 130 Introduction to Music Theory (1) <i>The student must pass Introduction to Music Theory or pass a proficiency in order to be in a music specialization. The course does not count toward the degree hour requirement.</i>
	<b>Specialization Core</b>	19	MMU 210 Worship Leadership (1) MTH 330 Music & Worship (2) + MMU 301 Music Research (1) MMU 330 Music Theory I (2) MMU 336 Music Theory II (3) MMU 338 Music Theory III (3) MMU 331 Sightsinging & Ear Training I (1) MMU 337 Sightsinging & Ear Training II (1) MMU 311 Conducting (2) MMU 385 Music History & Literature II (3)
	<b>Applied Music</b>	9	Private Music Lessons: Primary Instrument (0.5 per term) (4) Private Music Lessons: Secondary Instrument (0.5 per term) (1) Ensemble (at least one hour each year) (4)
	<b>Music Electives</b>	2	MMU 305 Basic Orchestration (2) MMU 280 Songwriting I (2) MMU 480, 481, or 482 Music Practicum (0.5, 1, or 2) MMU 255 Weekend Worship Ministry Seminar (1)
	<b>Senior Recital Project</b>	0	Required for graduation
	<b>Ministry Internship</b>	12	MIN 391 Preparation A (1) MIN 392 Preparation B (1)

		MIN 398 Part Time Field Experience (9) –OR– MIN 396 Full Time Field Experience (6) + <i>Music Elective</i> (3)
		MIN 393 Debriefing (1)

*\*\*This course fulfills the General Studies Requirement typically fulfilled with GMU 210 Introduction to Music and the hours are counted in General Studies.*

*\*\*\*Instrument is defined as voice, piano, or organ. If a student's primary instrument is voice, he or she must pass a piano or organ proficiency. If a student's primary instrument is piano or organ, he or she must pass a voice proficiency and take piano pedagogy as the Applied Elective. The student is required to perform a junior and senior recital.*

***Bachelor of Science in Christian Ministries, Specialization:  
 General Ministry***

The General Ministries Specialization is designed to permit maximum flexibility in program design. This specialty accommodates the student who desires to attend seminary, who desires to work on staff in a church, who desires to become involved in a "tent-making" ministry, or who desires to exercise Christian influence in the community and service to the church in a non-professional leadership role. The student may choose from two tracks: Christian Leadership and Career.

<b>Ministry Division</b> <b>Core Courses for Division (6 credits)</b> MMI 120 Missions and Evangelism (3) MIN 220 Ministry as Life's Work (2) MIN 225 Core Communication (1)		
<b>Christian Ministry Major</b> <b>Core Courses for Major (12 credits)</b> MPR 330 Church Administration (3) MCO 210 Introduction to Counseling (3) MCE 350 Minister as Educator (3) MIN 310 Models of Leadership (3)		
	<i>Specialization:</i> <b>Christian Leadership Track</b> Bachelor of Science	<i>Specialization:</i> <b>Career Track</b> Bachelor of Science
<b>Bible</b>	40	30
<b>Humanities</b>	45	45
<b>Specialization</b>	50	60
<b>Ministry Core</b>	6	6
<b>Major Core</b>	12	12
<b>Foundation Core</b>	10	0
<b>Electives/Specialization</b>	10	30
<b>Internship</b>	12	12



## ***Bachelor of Science in Christian Ministry (Christian Leadership Track)***

(135 semester hour degree: Bible - 40 hours; General Studies - 45 hours; and Ministerial Studies - 50 hours)

**Purpose:**

The Ministry Leadership track was established for students desiring to customize a Leadership program to accommodate a variety of church and para-church ministry goals. This program also provides a general ministry education as an undergraduate preparation for vocations that require a bachelors degree.

**Objectives:**

The Ministry Leadership Track is designed to equip a student to . . .

1. equip others in furthering the church's mission.
2. employ appropriate models and strategies of ministry.
3. communicate the word of God effectively.
4. comprehend the nature of servanthood in leadership ministry.
5. understand the dynamics of effective leadership ministry.
6. develop relationship building skills.
7. exhibit leadership skills in the various specialties of ministry.
8. demonstrate compassion for the lost and sensitivity for the hurting.
9. use a problem-solving model for conflict resolution.

**Course Requirements:**

<b>Bible Major</b> 40 Credits	<b>Bible Introduction</b>	3	BIN 110 Introduction to Biblical Studies (3) –OR– BIN 112 Bible Survey (3)
	<b>Biblical Languages</b>	3	BIN 230 Intro to Biblical Languages (3)
	<b>Gospels</b>	3	BNT 111 Life of Christ I (3) or BNT 121 Life of Christ II (3)
	<b>Church History</b>	3	BNT 260 Foundation of Christianity (3)
	<b>Bible History</b>	6	<i>Choose two</i> BOT 216 Foundations of Hebrew History (3) BOT 211 History of Israel (3) BOT 220 Seminar in Genesis (2) + Biblical Research (1)* BOT 225 Seminar in Samuel (2) + Biblical Research (1)* BOT 226 Seminar in Kings(2) + Biblical Research (1)*
	<b>Theology</b>	6	BTH 321 Introduction to Theology (3) BTH 411 Pauline Theology (3)
	<b>Bible/Theology Elective</b>	9	<i>Any BNT, BOT, or BTH courses</i>

	<b>OT Prophets Elective</b>	3	<i>Choose one</i> BOT 233 Wisdom Literature (3) BOT 315 Ezekiel and Daniel (3) BOT 321 Minor Prophets (3) BOT 241Jeremiah (2) + Biblical Research (1)* BOT 244 Isaiah (2) + Biblical Research (1)* BOT 251 Amos and Hosea (2) + Biblical Research (1)* BOT 254 Postexilic Prophets (2) + Biblical Research (1)*
	<b>Epistles Electives</b>	4	<i>Any BNT courses covering the New Testament Epistles</i>
	<b>FCC Bible Comp</b>	0	<i>Student may take the test during Senior Year</i>
<b>General Education</b> 45 Credits	<b>Composition</b>	6	GEN 110 Composition I (3) GEN 120 Composition II (3)
	<b>Social Science</b>	3	GPS 110 General Psychology (3) –OR– GSO 220 Introduction to Sociology (3)
	<b>Evidences</b>	3	GPH 110 Evidences (3)
	<b>Restoration History</b>	3	GHI 270 Restoration History (3)
	<b>History</b>	3	GHI 220 Western Civilization I (3) –OR– GHI 230 Western Civilization II (3)
	<b>Fine Arts</b>	3	GMU 210 Intro. to Music (3) –OR– GDR 110 Drama I (1) + GDR 115 Drama II (2)
	<b>Speech</b>	3	GSP 235 Speech: Pulpit (3) –OR– GSP 230 Speech: Public (3)
	<b>Math Competency</b>	0	GMA 050 Math Competency Test (0) –OR– <i>Students demonstrate competency at enrollment</i>
	<b>Math/Science</b>	3	<i>Choose one</i> GMA 110 Finite Math (3) GMA 120 Algebra (3) GSC 210 Biology (3)
	<b>Apologetics</b>	3	GPH 410 Apologetics (3)
	<b>Philosophy Elective</b>	3	<i>Any 3-hour GPH course</i>
	<b>History Elective</b>	3	<i>Any 3 hour GHI course</i>
<b>Humanities Electives</b>	9	<i>Any Humanities courses</i>	
<b>Ministry Major</b> 50 Credits <i>Note: Students must maintain a 2.0 cumulative GPA for courses in the Ministry Major to graduate with this Specialization.</i>	<b>Ministry Core</b>	6	MMI 120 Missions and Evangelism (3) MIN 220 Ministry as Life's Work (2) MIN 225 Core Communication (1)
	<b>Major Core</b>	12	MCO 210 Introduction to Counseling (3) MIN 310 Models of Leadership (3) MCE 350 Minister as Educator (3) MPR 330 Church Administration (3)
	<b>Foundation Core</b>	10	MCE 212 Intro. to Education (3) MMU 210 Worship Leadership (1) MYM 350 Family Life (3) MMI 380 Theology Of Missions (3)
	<b>Ministry Electives</b>	10	<i>Choose any qualifying MCE, MCO, MEC, MIN, MMI, MMU, MPR, MTH, or MYM courses. Pre-requisites &amp; co-requisites apply.</i>
	<b>Ministry Internship</b>	12	MIN 391 Preparation A (1) MIN 392 Preparation B (1)

			MIN 398 Part Time Field Experience (9) -OR- MIN 396 Full Time Field Experience (6) + <i>Ministry Elective</i> (3)
			MIN 393 Debriefing (1)

***Bachelor of Science in Christian Ministry (Career Track)***

(135 semester hour degree: Bible - 30 hours; General Studies - 45 hours; and Ministerial Studies - 60 hours)

**Purpose:**

The Career track was established to equip students for leadership in the local church while preparing them for a career in a professional vocation. This program also provides a general ministry education for students seeking a "tent-making" career while pursuing a part-time or volunteer ministry.

**Objectives:**

The Career Track is designed to equip a student to . . .

1. equip others in furthering the church's mission.
2. employ appropriate models and strategies of ministry.
3. communicate the word of God effectively.
4. comprehend the nature of servanthood in leadership ministry.
5. understand the dynamics of effective leadership ministry.
6. develop relationship building skills.
7. exhibit leadership skills in the various specialties of ministry.
8. demonstrate compassion for the lost and sensitivity for the hurting.
9. use a problem-solving model for conflict resolution.
10. develop a competency not available through FCC that may be used in a ministry setting.

**Course Requirements:**

<b>Bible Division</b> 30 credits	<b>Bible Introduction</b>	3	BIN 110 Introduction to Biblical Studies (3) –OR– BIN 112 Bible Survey (3)
	<b>Biblical Languages</b>	3	BIN 230 Intro to Biblical Languages (3)
	<b>Gospels</b>	3	BNT 111 Life of Christ I (3) or BNT 121 Life of Christ II (3)
	<b>Church History</b>	3	BNT 260 Foundation of Christianity (3)
	<b>Bible History</b>	6	<i>Choose two</i> BOT 216 Foundations of Hebrew History (3) BOT 211 History of Israel (3) BOT 220 Seminar in Genesis (2) + Biblical Research (1)* BOT 225 Seminar in Samuel (2) + Biblical Research (1)* BOT 226 Seminar in Kings(2) + Biblical Research (1)*
	<b>Theology</b>	3	BTH 321 Introduction to Theology (3)
	<b>Bible/Theology Elective</b>	9	<i>Any BNT, BOT, or BTH courses</i>
	<b>FCC Bible Comp</b>	0	<i>Student may take the test during Senior Year</i>
<b>General</b>	<b>Composition</b>	6	GEN 110 Composition I (3) GEN 120 Composition II (3)

<b>Education</b> 45 Credits	<b>Social Science</b>	3	GPS 110 General Psychology (3) –OR– GSO 220 Introduction to Sociology (3)
	<b>Evidences</b>	3	GPH 110 Evidences (3)
	<b>Restoration History</b>	3	GHI 270 Restoration History (3)
	<b>History</b>	3	GHI 220 Western Civilization I (3) –OR– GHI 230 Western Civilization II (3)
	<b>Fine Arts</b>	3	GMU 210 Intro. to Music (3) –OR– GDR 110 Drama I (1) + GDR 115 Drama II (2)
	<b>Speech</b>	3	GSP 235 Speech: Pulpit (3) –OR– GSP 230 Speech: Public (3)
	<b>Math Competency</b>	0	GMA 050 Math Competency Test (0) –OR– <i>Students demonstrate competency at enrollment</i>
	<b>Math/Science</b>	3	<i>Choose one</i> GMA 110 Finite Math (3) GMA 120 Algebra (3) GSC 210 Biology (3)
	<b>Apologetics</b>	3	GPH 410 Apologetics (3)
	<b>Philosophy Elective</b>	3	<i>Any 3-hour GPH course</i>
	<b>History Elective</b>	3	<i>Any 3 hour GHI course</i>
	<b>Humanities Electives</b>	9	<i>Any Humanities courses</i>
<b>Ministry Major</b> 50 Credits <i>Note: Students must maintain a 2.5 cumulative GPA for courses in the Ministry Major to graduate with this Specialization.</i>	<b>Ministry Core</b>	6	MMI 120 Missions and Evangelism (3) MIN 220 Ministry as Life's Work (2) MIN 225 Core Communication (1)
	<b>Major Core</b>	12	MCO 210 Introduction to Counseling (3) MIN 310 Models of Leadership (3) MPR 330 Church Administration (3) MCE 350 Minister as Educator (3)
	<b>Specialization Core</b>	30	<i>Student transfers up to 30 hours of another field. Student's specific transfer program must be approved prior to admission into the program. (Any remaining hours may be fulfilled here with a chosen ministry field.)</i>
	<b>Ministry Internship</b>	12	MIN 391 Preparation A (1) MIN 392 Preparation B (1) –OR– MIN 398 Part Time Field Experience (9) –OR– MIN 396 Full Time Field Experience (6) + <i>Ministry Elective (3)</i> MIN 393 Debriefing (1)

### ***Combination Programs***

If a student desires educational preparation in a vocational emphasis not offered by FCC, and yet desires to obtain a degree with a Bible major from this College, he or she may opt for a combination program. The objective of the combination degree program is to meet students' needs if they have vocational plans which require preparation beyond those offered at FCC. The responsibility is the student's to present a proposed program to the Ministerial Division Faculty through the office of the Vice President of Academics. The committee will evaluate the proposal in terms of its overall feasibility and its relation to the objectives of the College. If the program is approved, students may earn up to thirty-three semester credits to apply toward a degree at FCC. For details read the program information for the Career Track of the General Ministry program found above.

FCC, in cooperation with Deaf Missions in Council Bluffs, Iowa, will accept credits received from Deaf Missions' Extension Classes. This program is available to those who are of at least the Junior standing and have a GPA of "C" or above. Further details are available from the Registrar's Office.

### ***Bachelor Programs in Christian Education***

The Christian Education Ministries Major is one of two ministry majors available at FCC. There are four specializations available with a Christian Education Ministries Major: Christian Education Leadership, Music Education, Elementary Education, and Children’s Ministry. The following pages provide the purpose, objectives, and course requirements for each program in the Christian Education Ministries Major.

<b>Ministry Division</b>				
<b>Core Courses for Division (6 credits)</b>				
MMI 120 Missions and Evangelism (3)				
MIN 220 Ministry as Life’s Work (2)				
MIN 225 Core Communication (1)				
<b>Christian Education Major</b>				
<b>Core Courses for Major (12 credits)</b>				
MCE 212 Introduction to Education (3)				
MCE 220 Education Psychology (3)				
MCE 310 Methods of Teaching (3)				
MCE 320 Education Administration (3)				
	<i>Specialization:</i> <b>Christian Education Leadership</b> Bachelor of Arts or Bachelor of Science	<i>Specialization:</i> <b>Music Education</b> Bachelor of Science	<i>Specialization:</i> <b>Elementary Education</b> Bachelor of Science	<i>Specialization:</i> <b>Children’s Ministry</b> Bachelor of Arts or Bachelor of Science
<b>Bible</b>	40	30	30	40
<b>Humanities</b>	45	45	45	45
<b>Specialization</b>	50	60	60	50
<b>Ministry Core</b>	6	3	3	6
<b>Major Core</b>	12	12	12	12
<b>Specialization Core</b>	10	17	42	14
<b>Education Electives</b>	4	19	0	6
<b>Electives</b>	6	9	0	0
<b>Ministry Internship</b>	12	12	12	12
<b>Total Credits</b>	135	147	147	135

***Bachelor of Arts or Science in Christian Education  
 Ministries, Specialization: Christian Education Leadership***

(135 semester hour degree: Bible - 40 hours; General Studies - 45 hours; and Ministerial Studies - 50 hours)

Purpose: The Christian education program is designed for breadth and flexibility, covering many areas, including preparation to be an assistant or associate minister, Minister of Education, Minister to Singles, Minister to Adults, Minister to Children, and Minister of Discipleship or Involvement.

Objectives: The Christian Education specialization is designed to help students . . .

1. employ the educational program of the church as a successful instrument for outreach to the lost.
2. teach the Word of God effectively at any age level.
3. develop plans and materials for effective teaching.
4. use a variety of methods and media to teach the word of God.
5. oversee the educational program of a local church.
6. recruit and train workers for the educational program of the church.
7. intelligently assess his or her own skills in relation to available opportunities in the field.

Course Requirements:

<b>Bible Division</b> 40 credits	<b>Bible Introduction</b>	3	BIN 110 Introduction to Biblical Studies (3) –OR– BIN 112 Bible Survey (3)
	<b>Biblical Languages</b>	3	BIN 230 Intro to Biblical Languages (3)
	<b>Gospels</b>	3	BNT 111 Life of Christ I (3) or BNT 121 Life of Christ II (3)
	<b>Church History</b>	3	BNT 260 Foundation of Christianity (3)
	<b>Bible History</b>	6	<i>Choose two</i> BOT 216 Foundations of Hebrew History (3) BOT 211 History of Israel (3) BOT 220 Seminar in Genesis (2) + Biblical Research (1)* BOT 225 Seminar in Samuel (2) + Biblical Research (1)* BOT 226 Seminar in Kings(2) + Biblical Research (1)*
	<b>Theology</b>	6	BTH 321 Introduction to Theology (3) BTH 411 Pauline Theology (3)
	<b>Bible/Theology Elective</b>	9	<i>Any BNT, BOT, or BTH courses</i>



	<b>OT Prophets Elective</b>	3	<i>Choose one</i> BOT 233 Wisdom Literature (3) BOT 315 Ezekiel and Daniel (3) BOT 321 Minor Prophets (3) BOT 241Jeremiah (2) + Biblical Research (1)* BOT 244 Isaiah (2) + Biblical Research (1)* BOT 251 Amos and Hosea (2) + Biblical Research (1)* BOT 254 Postexilic Prophets (2) + Biblical Research (1)*
	<b>Epistles Electives</b>	4	<i>Any BNT course covering the New Testament Epistles</i>
	<b>FCC Bible Comp</b>	0	<i>Student may take the test during Senior Year</i>
<b>General Education</b> 45 Credits	<b>Composition</b>	6	GEN 110 Composition I (3) GEN 120 Composition II (3)
	<b>Social Science</b>	3	GPS 110 General Psychology (3) –OR– GSO 220 Introduction to Sociology (3)
	<b>Evidences</b>	3	GPH 110 Evidences (3)
	<b>Restoration History</b>	3	GHI 270 Restoration History (3)
	<b>History</b>	3	GHI 220 Western Civilization I (3) –OR– GHI 230 Western Civilization II (3)
	<b>Fine Arts</b>	3	GMU 210 Intro. to Music (3) –OR– GDR 110 Drama I (1) + GDR 115 Drama II (2)
	<b>Speech</b>	3	GSP 235 Speech: Pulpit (3) –OR– GSP 230 Speech: Public (3)
	<b>Math Competency</b>	0	GMA 050 Math Competency Test (0) –OR– <i>Students demonstrate competency at enrollment</i>
	<b>Math/Science</b>	3	<i>Choose one</i> GMA 110 Finite Math (3) GMA 120 Algebra (3) GSC 210 Biology (3)
		<b>Apologetics</b>	3
	<b>Philosophy Elective</b>	3	<i>Any 3-hour GPH course</i>
<b>Bachelor of Arts</b>	<b>Humanities Elective</b>	3	<i>Any qualifying Humanities courses</i>
	<b>Biblical Language</b>	9	GLA 316 Greek I (3) GLA 326 Greek II (3) GLA 335 Greek III (3) –OR– GLA 321 Hebrew I (3) GLA 322 Hebrew II (3) GLA 331 Hebrew III (3)
<b>Bachelor of Science</b>	<b>History Elective</b>	3	<i>Any 3 hour GHI course</i>
	<b>Humanities Electives</b>	9	<i>Any Humanities courses</i>
<b>Ministry Major</b> 50 Credits  <i>Note: Students must maintain a 2.5 cumulative</i>	<b>Ministry Core</b>	6	MMI 120 Missions and Evangelism (3) MIN 220 Ministry as Life's Work (2) MIN 225 Core Communication (1)
	<b>Major Core</b>	12	MCE 212 Introduction to Education (3) MCE 220 Educational Psychology (3) MCE 310 Methods of Teaching (3) MCE 320 Education Administration (3)

<i>GPA for courses in the Ministry Major to graduate with this Specialization.</i>	<b>Specialization Core</b>	10	GPS 313 or 317 Developmental Psychology (3) MIN 310 Models of Leadership (3) MCE 330 Group Dynamics (2) MCE 415 Children's Ministry (2) or MCE Adult Education Leadership (2)
	<b>Education Electives</b>	4	MCE 341 Instructional Resources (2) MCE 420 Program Development Strat. (2)
	<b>Electives</b>	6	<i>Choose any qualifying MCE, MCO, MEC, MED, MIN, MMI, MMU, MPR, MTH, or MYM courses. Prerequisites &amp; co-requisites apply.</i>
	<b>Ministry Internship</b>	12	MIN 391 Preparation A (1) MIN 392 Preparation B (1)
			MIN 398 Part Time Field Experience (9) –OR– MIN 396 Full Time Field Experience (6) + <i>Ministry Elective</i> (3)
		MIN 393 Debriefing (1)	

***Bachelor of Science in Christian Education Ministries,  
 Specialization: Music Education (4.5 year program)***

(147 semester hour degree: Bible - 30 hours; General Studies - 45 hours; and Ministerial Studies - 72 hours)

Purpose: The Music Education Specialization is designed to educate students to meet two vocational purposes: lead a music ministry in the local church and meet the State of Florida teaching certification requirements in music education.

Objectives: The Music Education program is designed to prepare the student to . . .

1. structure all the music programs in a school setting.
2. be aware of the opportunities for evangelistic outreach through a music program.
3. organize and administer a complete graded choir program a school setting.
4. demonstrate keyboard and vocal proficiency through recitals and jury sessions.
5. choose and direct the musical selections for any age-level musical ensemble.
6. provide basic music accompaniment for the choral presentations of any age.
7. be competent in directing singing for all groups a school setting.
8. have basic understanding of organizing, administering, and conducting techniques for choral and instrumental music programs.

Course Requirements:

<b>Bible Division</b> 30 credits	<b>Bible Introduction</b>	3	BIN 110 Introduction to Biblical Studies (3) –OR– BIN 112 Bible Survey (3)
	<b>Gospels</b>	3	BNT 111 Life of Christ I (3) or BNT 121 Life of Christ II (3)
	<b>Church History</b>	3	BNT 260 Foundation of Christianity (3)
	<b>Bible History</b>	6	<i>Choose two</i> BOT 216 Foundations of Hebrew History (3) BOT 211 History of Israel (3) BOT 220 Seminar in Genesis (2) + Biblical Research (1)* BOT 225 Seminar in Samuel (2) + Biblical Research (1)* BOT 226 Seminar in Kings(2) + Biblical Research (1)*
	<b>Theology</b>	6	BTH 120 Theology of Evangelism & Missions (3) BTH 321 Introduction to Theology (3)
	<b>Bible/Theology Elective</b>	9	<i>Any BNT, BOT, or BTH courses</i>
	<b>FCC Bible Comp</b>	0	<i>Student may take the test during Senior Year</i>
<b>General Education</b> 45 Credits	<b>Composition</b>	6	GEN 110 Composition I (3) GEN 120 Composition II (3)
	<b>Social Science</b>	3	GPS 110 General Psychology (3) –OR– GSO 220 Introduction to Sociology (3)
	<b>Evidences</b>	3	GPH 110 Evidences (3)

	<b>Restoration History</b>	3	GHI 270 Restoration History (3)
	<b>History</b>	3	GHI 220 Western Civilization I (3) –OR– GHI 230 Western Civilization II (3)
	<b>Fine Arts</b>	3	MMU 380 Music History & Literature I (3)
	<b>Speech</b>	3	GSP 235 Speech: Pulpit (3) –OR– GSP 230 Speech: Public (3)
	<b>Math Competency</b>	0	GMA 050 Math Competency Test (0) –OR– <i>Students demonstrate competency at enrollment</i>
	<b>Math</b>	3	GMA 120 College Algebra (3)
	<b>Apologetics</b>	3	GPH 410 Apologetics (3)
	<b>Philosophy Elective</b>	3	<i>Any 3-hour GPH course</i>
	<b>History Elective</b>	3	<i>Any 3 hour GHI course</i>
	<b>Humanities Electives</b>	9	<i>Any Humanities courses</i>
<b>Ministry Major</b> 72 Credits <i>Note: Students must maintain a 2.5 cumulative GPA for courses in the Ministry Major to graduate with this Specialization.</i>	<b>Ministry Core</b>	3	MIN 220 Ministry as Life's Work (2) MIN 225 Core Communication (1)
	<b>Major Core</b>	12	MCE 212 Introduction to Education (3) MCE 220 Education Psychology (3) MCE 310 Methods of Teaching (3) MCE 320 Education Administration (3)
	<b>Music Theory Intro</b>	0	MMU 130 Introduction to Music Theory (1) <i>The student must pass Introduction to Music Theory or pass a proficiency in order to be in a music specialization. The course does not count toward the degree hour requirement.</i>
	<b>Specialization Core</b>	15	MMU 331 Sightsinging & Ear Training 1 (1) MMU 337 Sightsinging & Ear Training 2 (1) MMU 330 Music Theory I (2) MMU 336 Music Theory II (3) MMU 338 Music Theory III (3) MMU 380 Music History & Literature II (3) MTH 330 Music and Worship (2)
	<b>Applied Music</b>	9	Private Lessons: Primary Instrument (4) Private Lessons: Secondary Instrument (1) Ensemble (4) <i>Instrument is defined as voice, piano, or organ. If a student's primary instrument is voice, he or she must pass a piano or organ proficiency. If a student's primary instrument is piano or organ, he or she must pass a voice proficiency and take piano pedagogy as the Applied Elective. The student is required to perform a junior and senior recital.</i>
	<b>Music Education Core</b>	19	MED 355 Introduction to Classroom Spanish (3) MMU 311 Conducting (2) MMU 315 Advanced Conducting (2) MMU 321 Child & Adol. Music Methods (3) MMU 391 Woodwind Methods (3) MMU 393 Brass Methods (3) MMU 397 String and Percussion Methods (3)
	<b>Education Practicum</b>	2 0	MMU 491 Practicum I (2) <i>50 independent clock hours of practicum</i>
	<b>Certification Internship</b>	12	MED 451 Classroom Management (3) MMU 498 Certification Internship (9)
	<b>Senior Recital</b>	0	<i>Required for graduation</i>

	<b>Certification Tests</b>	0	MMU 485 General Knowledge Test
		0	MMU 486 Subject Area Exam (K-12)
		0	MMU 487 Professional Education Exam

***Bachelor of Science in Christian Education Ministries,  
 Specialization: Elementary Education (4.5 year program)***

(147 semester hour degree: Bible - 30 hours; General Studies - 45 hours; and Ministerial Studies - 72 hours)

**Purpose:** This course of study is for the student who desires the benefit of a Bible College education, who desires certification to teach in the Christian School or in the public school setting, and who is committed to exercise Christian influence in a non-professional role of Christian service in the local church.

**Objectives:** This block of courses is designed to help students . . .

1. develop a philosophy of education that reflects a Christian world view.
2. appreciate teaching as a profession in which they can minister to children.
3. develop professional skill and attitudes required for classroom instruction and institutional teamwork.
4. integrate various fields of learning and exhibit competencies in all subject areas.
5. apply principles of human development and insights into the learning process.
6. evaluate curriculum, management approaches, and trends and choose appropriately.
7. pass the Florida Teacher's Certification Examination.

**Course Requirements:**

<b>Bible Division</b> 30 credits	<b>Bible Introduction</b>	3	BIN 110 Introduction to Biblical Studies (3) –OR– BIN 112 Bible Survey (3)
	<b>Gospels</b>	3	BNT 111 Life of Christ I (3) or BNT 121 Life of Christ II (3)
	<b>Church History</b>	3	BNT 260 Foundation of Christianity (3)
	<b>Bible History</b>	6	<i>Choose two</i> BOT 216 Foundations of Hebrew History (3) BOT 211 History of Israel (3) BOT 220 Seminar in Genesis (2) + Biblical Research (1)* BOT 225 Seminar in Samuel (2) + Biblical Research (1)* BOT 226 Seminar in Kings(2) + Biblical Research (1)*
	<b>Theology</b>	6	BTH 120 Theology of Evangelism & Missions (3) BTH 321 Introduction to Theology (3)
	<b>Bible/Theology Elective</b>	9	<i>Any BNT, BOT, or BTH courses</i>
	<b>FCC Bible Comp</b>	0	<i>Student may take the test during Senior Year</i>
<b>General Education</b> 45 Credits	<b>Composition</b>	6	GEN 110 Composition I (3) GEN 120 Composition II (3)
	<b>Social Science</b>	3	GPS 110 General Psychology (3) –OR– GSO 220 Introduction to Sociology (3)
	<b>Evidences</b>	3	GPH 110 Evidences (3)
	<b>Restoration History</b>	3	GHI 270 Restoration History (3)

	<b>History</b>	3	GHI 220 Western Civilization I (3) –OR– GHI 230 Western Civilization II (3)
	<b>Fine Arts</b>	3	MMU 380 Music History & Literature I (3)
	<b>Speech</b>	3	GSP 235 Speech: Pulpit (3) –OR– GSP 230 Speech: Public (3)
	<b>Math Competency</b>	0	GMA 050 Math Competency Test (0) –OR– <i>Students demonstrate competency at enrollment</i>
	<b>Math</b>	3	GMA 110 Finite Math (3) –OR– GMA 120 College Algebra (3)
	<b>Apologetics</b>	3	GPH 410 Apologetics (3)
	<b>Philosophy Elective</b>	3	<i>Any 3-hour GPH course</i>
	<i>History Elective</i>	3	<i>Any 3 hour GHI course</i>
	<b>Humanities Electives</b>	9	<i>Any Humanities courses</i>
<b>Ministry Major</b> 72 Credits <i>Note: Students must maintain a 2.5 cumulative GPA for courses in the Ministry Major to graduate with this Specialization.</i>	<b>Ministry Core</b>	3	MIN 220 Ministry as Life's Work (2) MIN 225 Core Communication (1)
	<b>Major Core</b>	12	MCE 212 Introduction to Education (3) MCE 220 Education Psychology (3) MCE 310 Methods of Teaching (3) MCE 320 Education Administration (3)
	<b>Specialization Core</b>	39	GPS 313 Developmental Psychology: Child (3) MED 310 Teaching Science to Children (3) MED 321 Using the Fine Arts to Teach (3) MED 330 Foundations in Reading (3) MED 335 Corrective Reading Strategies (3) MED 340 Teaching Math to Children (3) MED 350 Language Arts for Children (3) MED 355 Intro. to Classroom Spanish (3) MED 360 Children's Literature (3) MED 380 Social Science for Children (3) MED 390 Children's Health Education (3) MED 410 Methods of ESOL (3) MED 420 Exceptional Children (3)
	<b>Education Practicum</b>	6	MED 491 Practicum I (2) MED 492 Practicum II (2) MED 493 Practicum III (2)
	<b>Certification Internship</b>	12	MED 451 Classroom Management (3) MED 498 Certification Internship (9)
	<b>Certification Tests</b>	0	MED 485 General Knowledge Test
		0	MED 486 Subject Area Exam (K-12)
0		MED 487 Professional Education Exam	

## ***Bachelor of Arts or Science in Christian Education Ministries, Specialization: Children's Ministry***

(135 semester hour degree: Bible - 40 hours; General Studies - 45 hours; and Ministerial Studies - 50 hours)

Purpose: The Children's Ministry specialization is designed to prepare students for an education ministry in the local church with children and the parents of children who are from birth to fifth grade. [The Early Childhood Program was renamed the Children's Ministry Program to reflect the changes in the needs of churches and their staff. The programs are very similar in nature with minor changes in the Specialization core.]

Objectives: The Children's Ministry Specialization is designed to help students...

1. employ the educational program of the church as a successful instrument for outreach to the lost with focus on children from birth to fifth grade and their parents.
2. teach the Word of God effectively to children.
3. develop plans and materials for effective teaching.
4. oversee the Children's Ministry of a local church.
5. recruit and prepare workers for the children's program of the church.
6. recognize the unique role of children's ministry in the church.
7. organize and supervise a safe learning environment for children
8. develop skills to administrate a Children's Ministry in the local church.

### Course Requirements:

<b>Bible Division</b> 40 credits	<b>Bible Introduction</b>	3	BIN 110 Introduction to Biblical Studies (3) –OR– BIN 112 Bible Survey (3)
	<b>Biblical Languages</b>	3	BIN 230 Intro to Biblical Languages (3)
	<b>Gospels</b>	3	BNT 111 Life of Christ I (3) or BNT 121 Life of Christ II (3)
	<b>Church History</b>	3	BNT 260 Foundation of Christianity (3)
	<b>Bible History</b>	6	<i>Choose two</i> BOT 216 Foundations of Hebrew History (3) BOT 211 History of Israel (3) BOT 220 Seminar in Genesis (2) + Biblical Research (1)* BOT 225 Seminar in Samuel (2) + Biblical Research (1)* BOT 226 Seminar in Kings(2) + Biblical Research (1)*
	<b>Theology</b>	6	BTH 321 Introduction to Theology (3) BTH 411 Pauline Theology (3)
<b>Bible/Theology Elective</b>	9	<i>Any BNT, BOT, or BTH courses</i>	



	<b>OT Prophets Elective</b>	3	<i>Choose one</i> BOT 233 Wisdom Literature (3) BOT 315 Ezekiel and Daniel (3) BOT 321 Minor Prophets (3) BOT 241Jeremiah (2) + Biblical Research (1)* BOT 244 Isaiah (2) + Biblical Research (1)* BOT 251 Amos and Hosea (2) + Biblical Research (1)* BOT 254 Postexilic Prophets (2) + Biblical Research (1)*
	<b>Epistles Electives</b>	4	<i>Any BNT course covering the New Testament Epistles</i>
	<b>FCC Bible Comp</b>	0	<i>Student may take the test during Senior Year</i>
<b>General Education 45 Credits</b>	<b>Composition</b>	6	GEN 110 Composition I (3) GEN 120 Composition II (3)
	<b>Social Science</b>	3	GPS 110 General Psychology (3) –OR– GSO 220 Introduction to Sociology (3)
	<b>Evidences</b>	3	GPH 110 Evidences (3)
	<b>Restoration History</b>	3	GHI 270 Restoration History (3)
	<b>History</b>	3	GHI 220 Western Civilization I (3) –OR– GHI 230 Western Civilization II (3)
	<b>Fine Arts</b>	3	GMU 210 Intro. to Music (3) –OR– GDR 110 Drama I (1) + GDR 115 Drama II (2)
	<b>Speech</b>	3	GSP 235 Speech: Pulpit (3) –OR– GSP 230 Speech: Public (3)
	<b>Math Competency</b>	0	GMA 050 Math Competency Test (0) –OR– <i>Students demonstrate competency at enrollment</i>
	<b>Math/Science</b>	3	<i>Choose one</i> GMA 110 Finite Math (3) GMA 120 Algebra (3) GSC 210 Biology (3)
		<b>Apologetics</b>	3
	<b>Philosophy Elective</b>	3	<i>Any 3-hour GPH course</i>
<b>Bachelor of Arts</b>	<b>Humanities Elective</b>	3	<i>Any qualifying Humanities courses</i>
	<b>Biblical Language</b>	9	GLA 326 Greek II (3) GLA 335 Greek III (3) GLA 346 Greek IV (3) –OR– GLA 322 Hebrew II (3) GLA 331 Hebrew III (3) GLA 341 Hebrew IV (3)
<b>Bachelor of Science</b>	<b>History Elective</b>	3	<i>Any 3 hour GHI course</i>
	<b>Humanities Electives</b>	9	<i>Any Humanities courses</i>
<b>Ministry Major</b> 50 Credits <i>Note: Students must maintain a 2.5 cumulative GPA for courses</i>	<b>Ministry Core</b>	6	MMI 120 Missions and Evangelism (3) MIN 220 Ministry as Life's Work (2) MIN 225 Core Communication (1)
	<b>Major Core</b>	12	MCE 212 Introduction to Education (3) MCE 220 Educational Psychology (3) MCE 310 Methods of Teaching (3) MCE 320 Education Administration (3)

<i>in the Ministry Major to graduate with this Specialization.</i>	<b>Specialization Core</b>	<b>14</b>	GPS 313 Developmental Psychology: Child (3) MCE 341 Instructional Resources (2) MCE 415 Role of Children's Minister (2) MCE 420 Program Development Strategies (2) MCM 410 Instructional Strategies in Children's Ministry (2) MYM 350 Family Life (3)
	<b>Electives</b>	<b>6</b>	MYM Seminar-Issues in Christian & Youth Ministry (3) MCE 330 Group Dynamics (2) MED 420 Exceptional Children (3) MIN 210 Models of Leadership (3)
	<b>Internship</b>	<b>12</b>	MIN 391 Preparation A (1) MIN 392 Preparation B (1) MIN 398 Part Time Field Experience (9) -OR- MIN 396 Full Time Field Experience (6) + <i>Ministry Elective (3)</i> MIN 393 Debriefing (1)

## ***Bachelor of Theology***

### ***Program A***

The Bachelor of Theology degree is designed to provide an opportunity for undergraduate specialization in the field of Bible and Theology. There are two alternative plans to this program. The first is designed to meet the need of the student who has a Bachelor of Arts degree from a Bible College.

#### Course Requirements:

<b>Bachelor of Theology Program A</b> 32 credits	<b>Bible and Theology</b>	16	<i>Any BNT, BOT, or BTH courses</i>
	<b>Biblical Language</b>	6	GLA 326 Greek II (3) GLA 335 Greek III (3) –OR– GLA 322 Hebrew II (3) GLA 331 Hebrew III (3)
	<b>Philosophy</b>	3	GPH 410 Apologetics (3) –OR– GPH 220 Introduction to Philosophy (3)
	<b>Ministry Electives</b>	5	<i>Choose any qualifying MCE, MCO, MEC, MIN, MMI, MMU, MPR, MTH, or MYM courses. Prerequisites &amp; co-requisites apply.</i>
	<b>Humanities Elective</b>	2	<i>Any qualifying Humanities courses</i>
	<b>Essay</b>	0	BTH 598 Essay: Part I (0) BTH 599 Essay: Part II (0)

#### *Program Objectives*

The objectives for the program are that the student will . . .

1. be better equipped to properly interpret the Scriptures.
2. have a greater understanding of Biblical Theology and its application to the lives of the church members.
3. be able to demonstrate a greater understanding of the basic principles of grammar and syntax of the original Biblical languages.
4. have a greater competency to begin vocational ministry.
5. have a greater devotion to the Word of God and the relevant truths for the world of today.

### ***Program B***

The second Bachelor of Theology plan is designed to allow the student with a non-Bible Bachelor's degree from a College or University to pursue a special course of study for two years. The degree is especially designed for the student who desires to fulfill undergraduate requirements before entering seminary or to extend his or her education into the study of God's Word and ministry.

Course Requirements:

<b>Bachelor of Theology Program B</b> 70 credits	<b>Bible Introduction</b>	3	BIN 110 Introduction to Biblical Studies (3) –OR– BIN 112 Bible Survey (3)
	<b>New Testament</b>	14	<i>Any BNT courses</i>
	<b>Old Testament</b>	10	<i>Any BOT courses</i>
	<b>Bible Elective</b>	7	<i>Any BNT, BOT, or BTH courses</i>
	<b>Restoration History</b>	3	GHI 270 Restoration History (3)
	<b>Evidences</b>	3	GPH 110 Evidences (3)
	<b>Biblical Language</b>	9	GLA 326 Greek II (3) GLA 335 Greek III (3) GLA 346 Greek IV (3) –OR– GLA 322 Hebrew II (3) GLA 331 Hebrew III (3) GLA 341 Hebrew IV (3)
	<b>Language Exegesis</b>	3	BNT 310 Greek Exegesis (3) –OR– BOT 330 Hebrew Exegesis (3)
	<b>Philosophy</b>	3	GPH 410 Apologetics (3) –OR– GPH 220 Introduction to Philosophy (3)
	<b>Ministry Track</b>	15	<i>Select one of the following tracks:</i>  <b>Preaching</b> MMI 120 Missions & Evangelism (3) GPS 235 Speech: Pulpit (3) MPR 320 Art of Preaching (3) MPR 330 Church Administration (3) MPR 340 Christian Ministry (3)  <b>Christian Education</b> MMI 120 Missions & Evangelism (3) MCE 212 Introduction to Education (3) MCE 220 Educational Psychology (3) MCE 310 Methods of Teaching (3) MCE 320 Education Administration (3)  <b>Cross-Cultural Ministries</b> MMI 120 Missions & Evangelism (3) MMI 380 Theology of Missions (3) MMI 470 Strategies for World Evangelism (3) MMI 340 World Religions (2) <i>Pick one</i> MMI 391 Cross-cultural Communications (3) –OR– MMI 430 Language Acquisition Skills (3)
	<b>Essay</b>	0	BTH 598 Essay: Part I (0) BTH 599 Essay: Part II (0)

*Program Objectives*

The objectives for this program are that the student will . . .

1. be able to place his secular education into a Biblical perspective for ministry.

2. be able to systematically state the great doctrines of the Bible.
3. be equipped to defend the Biblical revelation against rival claims and hostile attacks.
4. demonstrate competence in a vocational specialization.
5. have the Biblical foundation to begin seminary.
6. be able to use grammatical principles to translate and interpret the Word of God.
7. appreciate the fact that a basic grasp of the original enables one to understand more fully the deep issues of the Word of God.
8. have practical abilities to lead the Church in preaching/teaching and administration.
9. be able to demonstrate a knowledge of the principles of effective communication.

### ***Academic Internships***

An Internship is one taken for credit and one that the student completes as part of his or her ministry program. There are three types of Internships: Ministry, Counseling, and Certification.

### ***Ministry Internship***

A Ministry Internship is required for the Cross-Cultural Ministries, Preaching, General Ministry, Christian Education Leadership, Early Childhood, and Music Ministry specializations. The ministry internship is also an option for the Youth and Family Ministry specialization and the Counseling specialization.

### ***Internship Arrangement***

Only internships approved by the Director of Internships, prior to internship, are considered Academic Internships and may be awarded credit. Information for persons interested in being field supervisors is available through the Academic Office.

### ***Internship Timeline***

#### ***Preparation***

Fall Term. Students begin working toward their internship during the Fall term of their Junior year. All three types of internship include a preparation component, field experience component, and a debriefing component. Specific details regarding the components for a specific internship are available through the Academic Office. The student must register for internship and complete all parts of the internship program before he or she is considered to have completed the Academic Internship program.

Spring Term. The Spring term of preparation focuses on individual attention from the intern's faculty advisor. The advisor works with the intern to refine the action plan for the field experience in consultation with the field supervisor. The intern completes as much of the preparation for lessons to be taught or sermons to be preached during this second term of preparation to better prepare for the actual field experience.

## **Field Experience**

Summer, Fall, and Spring Terms. An intern may complete the field experience in one full-time work setting for six credit hours or through three part-time work settings for which the student receives 3 hours credit each term of field experience. Regardless how the intern chooses to structure the credit and work, the field experience is designed to permit the greatest possible exposure to the field of choice for the intern. Care is taken to provide as many experiences as possible to permit the intern to learn from firsthand exposure to the ministry setting. This preparation benefits the student greatly the first year of ministry "out on their own."

Progress Report Form. The intern completes at least two progress reports throughout the field experience and submits the progress reports to the field supervisor for review and comment. The field supervisor mails the completed form to the intern's faculty advisor. The advisors use this and other forms of communication to monitor progress of the intern on the field. There is, however, not significant communication between the intern and the faculty advisor during the field experience unless there is a problem that must be addressed that is not handled by the field supervisor.

Intern Evaluation Form. The Director of Internships mails evaluation forms to field supervisors at the beginning of the field experience period for the intern. The intern has a copy of the same evaluation in the internship syllabus, in the event an additional form may be needed. The intern is responsible to make sure that at least three persons at a field site are provided an evaluation form for completion. The intern and field supervisor work together to collect the evaluations and provide them to the faculty advisor, prior to the beginning of the Debriefing course, held during the Fall term each year. For students completing part-time internships the Fall and Spring terms, the debriefing is merely an evaluation of progress made in the summer term and becomes the basis for improvements to be addressed in the Fall and Spring terms.

## **Debriefing**

Fall Term. The Debriefing Class is scheduled for each Fall term and is required for the completion of the internship program. The focus of the class is on helping the student to identify what learning took place during the field experience. The interns are also encouraged to look back over the experience to see the benefits and challenges of ministry and to begin thinking through them as they prepare for ministry following graduation.

## **Counseling Internship**

The Counseling Internship is an option for students completing the Youth and Family Ministry specialization or the Counseling specialization. The fifteen-week internship is completed in a community agency setting. The preparation and debriefing for the Counseling Internship follows the same schedule as the Ministry Internship.

## **Certification Internship**

A certification internship is required for students completing the Elementary Education and the Music Education specializations. The internship setting is the public school or private Christian school and lasts for approximately fifteen weeks.

Preparation. Interns are prepared for their time in the classroom through a series of workshops and seminars provided to them just prior to their beginning the field experience.

These information sessions include opportunities to organize for the internship, tips from experienced teachers regarding protocols in the school system, and other general information designed to orient the student to the elementary classroom.

Field Experience. The field experience is the time spent in the elementary school classroom. The student is gradually introduced to the teaching process with the last few weeks being taught completely by the intern under the supervision of the cooperation teacher.

Debriefing. A time is spent after the internship with the Director of Certification to debrief the interns regarding their experiences. This is always a learning opportunity for both the intern and the elementary education faculty.

## ***Alternative Degree Completion Program***

The college offers an Alternative Degree Completion (ADC) program for adult learners who have some college credit. The program is designed for students who desire to finish a degree program, but who are unable to attend one of our traditional programs because of family or work commitments. The curriculum is offered in a convenient, one night a week format. Most students are able to complete their associate degree in 18 months and their bachelor degree in 20 months.

### **Associate of Arts**

Purpose:

The ADC Associate of Arts is designed to equip students with a basic knowledge of the Word of God and the field of humanities. The program is also foundational for continuing in a bachelor degree program.

Objectives:

After completing the ADC associate program the student should be able to:

1. demonstrate basic written and oral communication skills.
2. discuss evangelistic and pastoral ministry functions of the church.
3. describe and explain the themes and content of several Bible books.
4. respond to basic topics in humanities from a Christian perspective.
5. interact with their culture analytically, socially and spiritually.
6. successfully pursue a bachelor degree.

Admissions requirements:

1. Be at least 25 years of age.
2. Have at least 12 semester hours of college credit from a recognized institution with a grade of "C" or better or equivalent.
3. Submit official transcripts from all post-secondary institutions attended.
4. Complete an application for admission and application fee.
5. Submit a personal reference letter. The college reserves the right to request that the applicant supply additional personal references and prepare an autobiographical sketch to aid in the admission decision.

### ***Curriculum***

<b>Bible Division</b> (15 credits)	<b>ADB 110</b>	Introduction to Biblical Studies	3
	<b>ADB 210</b>	Origin and Development of the Bible	3
	<b>BNT ____</b>	New Testament Elective	3
	<b>BOT ____</b>	Old Testament Elective	3
	<b>B</b>	Bible Elective	3
<b>Humanities Division</b> (21 credits)	<b>ADG 110</b>	Finite Math	3
	<b>ADG 120</b>	Composition I	3
	<b>ADG 130</b>	Introduction to Psychology	3
	<b>ADG 230</b>	Speech	3



	<b>ADG 240</b>	Evidences	3
	<b>ADG 280</b>	Music Appreciation	3
		Humanities Elective - ADG 215 Literature of C.S. Lewis - Other courses	3
<b>Ministry Division</b> (6 credits)	<b>ADM 110</b>	Missions and Evangelism	3
	<b>ADM 220</b>	Introduction to Pastoral Ministry	3

<b>ADC Associate of Arts</b>	
Biblical Studies	15
General Education	21
Ministry Division	6
Elective and Transfer Credit	22
<b>Total Credits</b>	<b>64</b>

## **Bachelor of Science in Christian Leadership**

### Purpose:

The Bachelor of Science in Christian Leadership is designed to prepare students for secular careers demanding skills in administration and leadership or for careers in Christian ministry.

### Objectives:

After completing the Christian Leadership program at FCC students should . . .

1. interact with their culture analytically, socially, and spiritually.
2. appreciate the message of the Bible in its historic context.
3. have the skills necessary for the proper interpretation of the Bible.
4. be able to state systematically the great doctrines of the Bible.
5. be equipped to defend the Biblical revelation against rival claims and hostile attacks.
6. be competent to provide Christian leadership in the chosen field of work.
7. be able to apply Biblical principles in the practice of church-related ministry.
8. be able to communicate effectively the Word of God.
9. model character and leadership ability consistent with the mind and attitude of Christ.
10. demonstrate proficiency in the general area of leadership ministry.
11. reach the lost with the gospel of Christ effectively and compassionately.
12. practice relationship-building skills.
13. function effectively in an administrative role.
14. refine personal, professional, and spiritual priorities.

### *Admissions requirements*

1. Be at least 25 years of age.
2. Have at least 60 semester hours of college credit from a recognized institution with a grade of "C" or better or equivalent.
3. Submit official transcripts from all post-secondary institutions attended.
4. Complete an application for admission and application fee.
5. Submit a personal reference letter. The college reserves the right to request that the applicant supply additional personal references and prepare an autobiographical sketch to aid in the admission decision.

### *Curriculum*

<b>Bible Division</b> (30 credits)	<b>ADB 301</b>	Introduction to Bible I	1
	<b>ADB 302</b>	Introduction to Bible II	2
	<b>ADB 310</b>	From Eden to the Exile	3
	<b>ADB 320</b>	The Ministry of Jeremiah	3

	<b>ADB 330</b>	Earliest Christianity	3
	<b>ADB 350</b>	The Leadership of Paul	3
	<b>ADB 360</b>	Life and Leadership of Jesus	3
	<b>ADB 400</b>	Integration of Theology and Psychology	3
	<b>ADB 410</b>	Biblical Interpretation	3
	<b>ADB 435</b>	Introduction to Theology	3
	<b>ADB 440</b>	Theology of Church Growth	3
<b>Humanities Division</b> (8 credits)	<b>ADG 210</b>	Analysis and Research	2
	<b>ADG 310</b>	Christian Perspectives	3
	<b>ADG 320</b>	Leadership Ethics	3
<b>Ministry Division</b> (15 credits)	<b>ADM 310</b>	Personal Development for Christian Leadership	3
	<b>ADM 315</b>	Counseling and Intervention Skills	3
	<b>ADM 340</b>	Group and Team Process	3
	<b>ADM 350</b>	Introduction to Leadership and Management	3
	<b>ADM 410</b>	Implementing Leadership Skills	3

<b>ADC Bachelor of Science Christian Leadership</b>	
Biblical Studies	30
General Education	8
Ministry Division	15
Elective and Transfer Credit	82
<b>Total Credits</b>	<b>135</b>

## ***Correspondence Courses***

The College makes available correspondence courses to be taken for credit or audit. A person may complete ten percent of a degree program by correspondence courses. Only courses with a grade of "C" or above may be transferred into a degree program.

Courses taken in this program are recognized by both the Accrediting Association of Bible Colleges (AABC) and the Southern Association of Colleges and Schools (SACS). Present courses include the following:

**BOT 216 Foundations of Hebrew History** A Study of Old Testament history from creation to the conquest (3 credits).

**BTH 250 Messianic Prophecy Exegesis** of selected passages with particular emphasis upon personal messianic predictive prophecy (2 credits).

**BOT 321 Minor Prophets** The twelve minor prophets are analyzed in chronological order. Special attention is given to the historical background, messianic prophecies, and practical application of each book (3 credits).

**BNT 250 Revelation** In addition to word studies, attention is given to the general picture of the book. The message of Revelation is portrayed as a tower of truth. The contents of the book are not regarded necessarily to be chronological (2 credits).

**BNT 260 Foundations of Christianity** The history of the Christian faith from the ascension to Paul's Roman imprisonment (3 credits).

**BIN 115 Old Testament Survey** An overview of the contents of the Old Testament with special emphasis on the living message of each book (2 credits).

## ***Registering for Correspondence Courses***

Additional information or registration materials for any of these courses may be obtained by calling the Registrar's Office, at 407-569-1336 or by emailing Diane Adams, [diane.adams@fcc.edu](mailto:diane.adams@fcc.edu).

Special permissions are required before a student who is enrolled in a degree program at Florida Christian College may use correspondence course credits to meet the degree requirements.

## **Community Music School**

### *Purpose*

The Community Music School (**CMS**) of Florida Christian College exists to serve Osceola County and other nearby communities with affordable and quality music instruction and to provide teaching opportunities for FCC music students.

### *Objectives*

The Community Music School will ...

1. Provide a unique opportunity for musical growth to students of all ages and stages of development.
2. Provide excellent private and group instruction in music.
3. Provide a wholesome Christian environment in the pursuit of music.
4. Develop and facilitate concerts, recitals, summer camps, workshops, and other events that serve and impact the community.
5. Provide opportunity for FCC music students to teach beginning levels.

The Community Music School offers both individual and group instruction in voice and instrumental music. Students are also afforded the opportunity to perform in ensembles such as the Christian Choral Society and the College Community Orchestra. Courses for credit are not offered through the Community Music School program; however, persons desiring to receive credit for instruction may enroll for credit through the College. For more information regarding the Community Music School please call Mrs. Ruth T. Reyes, Program Director, at extension 370.

The Community Music School of Florida Christian College admits students of any sex, race, color, age, and national and ethnic origin to all the rights, privileges, programs, and activities generally made available to students of the school. It does not discriminate on the basis of race, color, physical disability, age, or national and ethnic origin in the administration of its educational policies admission policies, and other administered programs. Campus facilities are designed and equipped to accommodate physically disabled students.

### *CMS Staff*

Director: Kathy Dennis  
Assistant: Sarah Schneider  
Faculty: Pam Chambers, Tammie Combs, Rob Meier, Beth Douglass, Emily Reed, Sarah Schneider, Susan Davison.

## **Academic Policy**

Academic policy for FCC is set forth in detail in the document entitled Academic Management Policies and Procedures. The following paragraphs are a summary of that policy. FCC reserves the right to adjust academic policy whenever the need arises.

### **Academic Assistance Program**

Students whose Cumulative Grade Average (CGPA) falls below 2.000 are automatically enrolled in the Academic Assistance Program (AAP), which is designed to inform students about and assist students with their grades. The AAP has four major components: Academic Warning, Academic Restriction, Academic Probation, and the H.E.L.P. Program.

**Academic Warning:** Students whose CGPA falls within the appropriate range (see chart below) are placed on Academic Warning. Students on Academic Warning do not experience reduced hours but may not participate in activities requiring a 2.000 CGPA or higher. Juniors & Seniors may not be placed on Academic Warning (except in special circumstances).

**Academic Restriction:** Students whose CGPA falls within the appropriate range (see chart below) are placed on Academic Restriction. Students on Academic Restriction experience an appropriate reduction in hours (based on academic level and CGPA) and may not participate in activities requiring a 2.000 CGPA or higher. These students must also participate in the H.E.L.P. Program (described below) and must achieve a *Term* GPA of 2.000 or higher to avoid being placed on Academic Probation. Juniors & Seniors on Academic Restriction are not eligible for Federal Financial Aid.

**Academic Probation:** Student whose CGPA falls within the appropriate range (see chart below) are placed on Academic Probation. Students on Academic Probation experience an appropriate reduction in hours (based on academic level and CGPA) and may not participate in activities requiring a 2.000 CGPA or higher. These students are considered to be academically at risk and must participate in the H.E.L.P. Program (described below) and must achieve a *Term* GPA of 2.000 or higher or face possible dismissal from school. Juniors & Seniors on Academic Probation are not eligible for Federal Financial Aid.

(For all credit hour limits, the possibility of adding 3 makeup hours for classes failed is understood)

Freshman Restriction Scale			Sophomore Restriction Scale		
Academic ...	CGPA	Max Hours	Academic...	CGPA	Max Hours
<b>Warning</b>	1.999—1.500	No reduction	<b>Warning</b>	1.999—1.750	No reduction
	1.499—1.250	12 credit hours		<b>Restriction</b>	1.749—1.500
<b>Restriction</b>	1.249—1.000	9 credit hours	<b>Restriction</b>		1.499—1.250
	0.999—0.500	6 credit hours		<b>Probation</b>	1.249—1.000
<b>Probation</b>	0.499—0.000	3 credit hours	<b>Probation</b>		0.999—0.000

Junior & Senior Restriction Scale		
Academic...	CGPA	Max Hours
<b>Restriction</b>	1.999—1.750	12 credit hours
	1.749—1.500	9 credit hours
<b>Probation</b>	1.499—1.250	6 credit hours
	1.249—0.000	3 credit hours

**The H.E.L.P. Program:** Students enrolled in Academic Restriction and Academic Probation are also required to enroll in the H.E.L.P. Program. H.E.L.P. is a person-specific program, individually tailored to meet the needs of the student with the goal of improving the CGPA to a 2.000 or higher. The H.E.L.P. Program offers five major areas of assistance which have been found to directly affect academic success: Educational Assistance, Motivational Assistance, Spiritual Assistance, Emotional Assistance, and Interpersonal Assistance. More information may be found in the H.E.L.P. Program brochure, available from the Registrar's Office.

**Note:** Low academic progress (if it results in mandatory reduction in the number of credits permitted during a term) may adversely affect financial aid eligibility.

### *Add/drop*

There are designated times throughout the first week of classes at which students may adjust their schedule by adding or dropping a class. There is sometimes an add/drop fee associated with these changes. When students drop a class, it is as if they never registered for the class, in that it does not appear on their schedule again that term, although dropping courses *may* affect a student's financial aid eligibility.

If students wish to add a class, they should attend all class sessions even before being officially added to the roll. Class sessions missed before registration are counted as other absences for the class. Class instructors will expect students to have purchased textbooks and syllabi prior to the first session of the class.

### *Advisement*

All new students are assigned a Freshman Advisor until they declare their degree program. At that time, they are assigned a program advisor who will guide them through the particulars of their chosen program including class schedules, internship selection, and other

issues. Students should meet with their advisors at least twice a year: during the November and April Registration periods.

### *ADA (American Disabilities Act)*

FCC will comply with the provisions of Title III of the Americans with Disabilities Act, as a public accommodation, and will provide reasonable accommodation to persons otherwise qualified who fulfill the College's ADA procedures, inasmuch as the reasonable accommodation does not constitute an undue burden or fundamental alteration for the institution.

The Executive Vice President is the designated ADA liaison for the institution. Students are required to register their disability in the Academic Office.

### *Auditing Courses*

If students wish to gain classroom instruction without credit, they may be admitted as an auditor in classes for which they are qualified, if classroom space is available. An auditing fee must be paid at the beginning of the course. This fee is not refundable.

### *Bachelor of Theology Essay*

Candidates for the Bachelor of Theology degree must submit to the Faculty an essay on some theme of importance in Biblical or theological studies. The essay will normally be not less than twenty-five pages in length and must be submitted in duplicate to the Faculty.

### *Change from Credit to Audit*

In order to change from credit to audit status, students must have the approval of the instructor of the class and the Vice President of Academics. Students should follow the same steps listed in the paragraph on withdrawal.

### *Class Attendance*

The student will not be penalized for any absence up to 10% of the total scheduled class sessions. After 10%, an automatic penalty of one grade increment will be deducted. The latter penalty may be waived only by action of a faculty committee, upon written appeal. There are provisions for a professor to waive a penalty for the absences up to 10% if the student presents a legitimate excuse to the professor.

After a student is absent for 20% of the class sessions, the student is dropped from the roll and given an "F" grade. The student may petition to be allowed back in the class. Petitions and instructions are available in the Registrar's Office.

Three tardies constitute an absence. Students arriving late, leaving early, or leaving class for a portion of the class session are considered tardy.

The Department of Veterans Affairs will be notified if a veteran student's enrollment status (full-time,  $\frac{3}{4}$ -time,  $\frac{1}{2}$ -time, less than  $\frac{1}{2}$ -time) changes due to withdrawal or dismissal from a class. Future benefits will be appropriately adjusted by the VA. The veteran will be terminated from veterans benefits for unsatisfactory attendance at the point when the veteran student's enrollment status drops to less than  $\frac{1}{2}$ -time.

### *Class Reinstatement*



If students have been dropped from a class because of excessive absences, they may be reinstated by making a written request, through the Office of the Vice President of Academics, for a hearing before the entire Faculty. In that hearing, the student should be prepared to give an explanation for each absence in the class. Unfavorable action by the Faculty or failure to appeal to the Faculty will result in a failing grade for the course.

### *Classification of Credit Students*

There are three classifications for students: degree-seeking or non-degree seeking, full-time or part-time, and class rank.

**Degree Seeking or Non-Degree Seeking:** All students are classified as degree-seeking or non-degree seeking. A degree-seeking student has completed the application process and is accepted into a degree program. A Non-degree Seeking Student is allowed to take no more than six hours per term and is not seeking a degree at FCC. Non-degree seeking students are generally not eligible for any form of financial aid.

**Full-time or Part-time:** A full-time student is degree-seeking and is enrolled in at least twelve credit hours. Part-time students are degree-seeking and are enrolled in no more than twelve credit hours.

**Class Rank:** All students are classified New Students until they have completed one term of study at Florida Christian College.

Freshmen	earned or transferred 0 - 33 semester credit hours
Sophomores	earned or transferred 34 – 63 semester credits
Juniors	earned or transferred 64 – 99 semester credits
Seniors	earned or transferred 100 + semester credits

### *College Year*

The FCC year is divided into three terms, each at least fifteen weeks long: Fall, Spring, and Summer.

**Fall term** begins in late August and ends in the middle of December. The week of Thanksgiving is a break.

**Spring term** begins in the middle of January and ends the last of last week of April or the first week of May. Spring Break is the first or second week of March.

**Summer term** begins the Monday following the Spring term and ends the Friday before the week of Orientation in the Fall, generally around August 15. The Sunmester is the first three weeks of the Summer Term and is the time when short-term courses are offered. Students may also enroll for independent study courses and internships that last the full fifteen weeks of the Summer term.

### *Course Repeat*

Students may repeat any course for the purpose of improving their grade in that course; however, the grade earned in the repeat course always replaces the grade of the previous course being repeated, even if the grade is lower (see Grade Forgiveness).

## *Correspondence Credit*

The College offers correspondence courses. Information on correspondence courses available, requirements, materials, etc. may be obtained by calling the Non-Traditional Education Office, Ext. 340.

No more than ten percent of a degree may be completed through correspondence, whether through the FCC program or by way of transfer from accredited correspondence schools.

Students in a degree program must receive prior approval to use a correspondence course to meet degree program requirements. The approval process requires the completion of the appropriate form available through the Registrar's Office.

## *Credit by Testing*

If students have participated in the general examinations of CLEP (College Level Examination Program) or AP (Advanced Placement) and have achieved the score recommended by the College Entrance Examinations Board, they may receive transcript credit for a subject provided that it directly pertains to their program at FCC. A maximum of 18 credits may be received by CLEP or AP transfer.

## *Credit Unit*

FCC operates on a semester calendar. One semester hour of credit represents approximately forty-five hours of time (fifteen hours in class and thirty hours of preparation).

## *Curriculum Adjustments*

In certain circumstances, schedule conflicts that are not a student's fault may be resolved by substituting a course in the same general area or by providing a specialized and supervised reading course. Following the suggested schedule provided by the student's advisor will help avoid schedule conflicts.

## *Degrees Awarded*

FCC awards the Associate of Arts, Bachelor of Science, Bachelor of Arts, and the Bachelor of Theology degrees. Specific information regarding the degree field and credits required for graduation are provided in the Academic Programs section.

Credits earned while pursuing an Associate Degree may be applied toward a Bachelor's Degree.

Credits earned on the Bachelor of Arts or Bachelor of Science degrees may be applied toward a Bachelor of Theology degree.

FCC will not award more than one associate degree to the same individual nor will the College award both a Bachelor of Arts and Bachelor of Science degree to the same individual. The B.S. degree may be exchanged a B.A. degree upon completion of the language requirement.

## *Examinations*

A final examination or equivalent work is given in each class. If students miss any major exam (viz, finals, mid-terms, or any other tests deemed major by the instructor), they must make written application (which must be accompanied by a \$10 fee) for a special

make-up exam. This application must provide justification for missing the original exam and must be made on the form available in the Registrar's Office. If approved by the appropriate Faculty committee, the student may then take the make-up exam. If the application is not approved, the \$10 fee will be returned and a failing grade for the exam will be recorded. The policy regarding makeup quizzes is announced by the individual instructors.

### *FCC Comprehensive Bible Exam*

The FCC Comprehensive Bible Exam, a comprehensive exam over the work covered in Bible classes, is given during the Fall Term of the student's senior year. This exam helps to measure general knowledge of the Bible. Passing this exam is one of the requirements for graduation with a Bachelor's degree. A non-credit Bible review class is offered during the first half of the Spring term for those who fail to pass the exam.

### *Gordon Rule*

FCC does not require compliance with Florida's "Gordon Rule" for graduation (State Rule 6A-10.30). Courses meeting the Gordon Rule requirement are identified in the course description section of the Catalog. Additional information regarding the "Gordon Rule" is available through the Academic Office.

### *Grade Forgiveness*

Grade forgiveness provides for a student to repeat any course to achieve a higher grade. The second grade awarded will replace the first grade awarded for the class, regardless if the first grade is higher. This practice provides forgiveness for the first grade awarded, and the student's CGPA is adjusted to not reflect the impact of the first grade awarded.

### *Grades*

Grades are determined on the following general criteria: daily recitations, special examinations, papers, projects, class attitude and participation, and a final examination. Specific courses may vary somewhat from this model. The grading scale is as follows:

<b>Letter Grade</b>	<b>Significance</b>	<b>Numerical Grade</b>	<b>Grade Points</b>
<b>A+</b>	Superior	99-100	4.00
<b>A</b>		96-98	4.00
<b>A-</b>		93-95	3.66
<b>B+</b>	Above Average	90-92	3.33
<b>B</b>		87-89	3.00
<b>B-</b>		83-86	2.66
<b>C+</b>	Average	80-82	2.33
<b>C</b>		77-79	2.00
<b>C-</b>		73-76	1.66
<b>D+</b>	Below Average	70-72	1.33
<b>D</b>		67-69	1.00
<b>D-</b>		65-66	0.66
<b>F</b>	Failure	00-64	0.00
<b>I</b>	Incomplete		
<b>W</b>	Withdraw without a grade		

<b>WF</b>	Withdraw Failing
<b>WP</b>	Withdraw Passing
<b>P</b>	Pass
<b>S</b>	Satisfactory
<b>U</b>	Unsatisfactory
<b>PT</b>	Pass Transfer

### *Grade Points*

To compute the grade points earned in a class, the point value of the letter grade earned (as found on the above chart) is multiplied by the number of credit hours in that course.

### *Grade Point Average*

Students may have two Grade Point Averages (GPA): Term GPA (TGPA) and Cumulative GPA (CGPA). The TGPA is the grade point average for a particular term. The CGPA is the student's grade point average of all courses taken at FCC. Students will be informed of their cumulative grade point average following each term. All students must maintain a CGPA of 2.000 or above to avoid being placed on Academic Restriction. A minimum average of 2.000 or above is required in order to graduate from FCC.

### *Graduation/Completion Rate*

Each year by July 1, the rate of degree completion is calculated for the first-year, full-time freshmen students who began attending the college in the fall semester six years prior. You may request a copy of the college's graduation/completion rate by contacting the Registrar's Office.

### *Graduation Requirements*

In order to be a degree candidate, students must have the following:

- (1) earned the specified credits in the degree program they have chosen;
- (2) compiled a cumulative Grade Point Average of 2.0 (C) for the entire course of study, with some programs requiring a 2.5 GPA for Ministry major;
- (3) demonstrated Math Competency;
- (4) completed all Lifelong Leadership Development requirements as described in the Student Life Handbook;
- (5) filed an application for the degree and paid the commencement fee at the beginning of the term at the end of which the degree is to be awarded;
- (6) paid all outstanding bills to the College;
- (7) met the residency requirement of one full year (34 credit hours at FCC);
- (8) passed the FCC Bible Comprehensive Exam;
- (9) demonstrated Christian character;
- (10) submitted an essay (for students seeking the Bachelor of Theology degree only, see BTH Essay).

## *Honors*

**Honor Roll:** If a student's grade average for a term is A- (3.66 GPA) or above and the student is enrolled in at least twelve hours of work, the student will be named to the Dean's List.

**Valedictorian and Salutatorian:** The valedictorian and salutatorian are the seniors who have completed at least 64 credits at FCC and have maintained the highest and second highest grade point averages during their time of study at FCC.

**Cum Laude:** If students compile a cumulative grade point average of 3.90 or higher, they will be graduated summa cum laude; if it is 3.83 or higher, magna cum laude; and if it is 3.5 or higher, cum laude. Honors are based on a minimum of 64 credits earned at FCC.

## *Incompletes*

All work for a course in the traditional program is due by the last scheduled session of that course. In the case of extraordinary circumstances, students may feel that an extension of time is appropriate. In that case students must petition the instructor in writing no later than the last day of recitation in the term. The "Request for Incomplete" form is available through the Registrar's Office.

The length of time to satisfy the incomplete is determined by the professor, but it may not exceed one month from the last day of the term, usually the Friday of Final Exam Week. In exceptional circumstances, an incomplete may extend longer than one month with the approval of the faculty.

A professor may refuse to grant an incomplete. In any event, an incomplete may result in the lowering of a final grade.

## *Math Competency*

Students must demonstrate their fundamental mathematical skills prior to enrolling in a college-level math course and prior to receiving an associates or bachelors degree. The competency is demonstrated through one of several ways:

- 1) Demonstration of a score of 24 or higher on the math portion of the ACT.
- 2) Demonstration of a score of 555 or higher on the math portion of the SAT.
- 3) Transferal of *any* college-level math course from another college.
- 4) Scoring 65% or higher on the FCC Math Competency Test (given to new students during the first week of the term).
- 5) Successfully passing the Developmental Math course.

## *Privacy Act*

The Family Educational Rights and Privacy Act of 1974 (FERPA) was enacted to protect the privacy of students' educational records, to establish student's rights to inspect and review their records, and to provide guidelines for the correction of inaccurate or misleading data in their records, including a possible appeal to the Family Educational Rights and Privacy Act office. Initial inquiries concerning a student's rights under the act should be referred to the Student Life Office.

## *Readmission*

Readmission is required of all students if twelve months have passed since they completed a term. The readmission process is initiated in the Admissions Office.

If a student was dismissed from school by the Academic or Student Life Committees, the person must meet all readmission requirements in addition to additional criteria that may be imposed by the dismissing committee. Courses taken by students who were dismissed from school by the Academic or Student Life Committees and taken while away from FCC are subject to approval before they may be applied to the student's degree program.

No readmission action is required if the student has left in good standing and is seeking to re-enroll less than twelve months after the completion of his or her last term.

## *Registration*

Term registration dates and times are available through the Admissions Office. Information regarding student advisement is available by contacting the Registrar's Office.

The registration process begins with advisement. If students choose to deviate from the recommended schedule of classes, they may not graduate within the typical time allotted for their chosen degree program.

Enrolling for more than eighteen semester hours a term requires special permission of the Registrar. Students will be officially admitted to classes only when they have completed registration.

## *Repetition of a Class*

Students may repeat courses in which they received failing grades. Any course retaken on such a basis must be with the consent of the student's advisor. The second grade earned will replace the original in the computation of the cumulative Grade Point Average. Students must designate the course a "repeat" in the registration process in order to be assured of grade point adjustment.

## *Residency Requirement*

Students must complete at least 34 semester credits of their program at Florida Christian College. At least nine hours of the residency requirement must be completed in each of the student's chosen majors. For example, students majoring in Bible and Christian Ministry must complete 9 credits in Bible and 9 credits in Christian Ministry.

## *Satisfactory Academic Progress*

Students must make satisfactory progress in order to remain in good standing and to receive financial aid. Satisfactory Progress means that the student maintains a CGPA of

2.000 and that the desired program of study is completed within 150% of the hours attempted. Additional information regarding Satisfactory Progress is available in the Registrar's Office.

### *Schedule Changes*

After registration students may change their schedule in one of three ways: Add/Drop, Withdrawal, Change from Credit to Audit. For information please review the specific information on the topic found in this section.

### *Transcript Request (Academic)*

Official academic transcripts of permanent records will be furnished to other institutions, agencies, or individuals upon written request from the student. There is a five-dollar charge for each transcript. Official transcripts will not be issued for students having an account balance due until the balance is paid and a release is given from the Finance Office.

### *Transfer Policy*

FCC will accept credits for relevant subjects from other schools accredited by the Association for Biblical Higher Education (ABHE; formerly the Accrediting Association of Bible Colleges) or a regional accrediting body. The policy regarding the acceptance of credits from a non-accredited school is available in the Registrar's Office. "C" or higher work will be accepted. In certain circumstances a course receiving a "C-" may be accepted. FCC accepts by way of transfer from accredited correspondence schools up to 10% of the total credits required in a degree program. Students must meet the 34-hour residency requirement for graduation (see Residency Requirement). For information regarding CLEP and AP, see Credit by Testing.

The transfer of credits completed at another college while the student is enrolled in a degree program at FCC are subject to approval. Students should contact the Registrar's Office for additional information regarding being a "Transient Student."

The College will maintain a written record that clearly indicates that appropriate previous education and training has been evaluated and granted and that the VA and the veteran have been notified. In certain cases with a student enrolled in the Alternative Degree Completion program, depending on the specific course, the semester tuition charge may be proportionately reduced for an ADC course being replaced with approved transfer credits.

### *Withdrawal*

After the add/drop period, a student may withdraw from a class or classes.

The student who withdraws from a class within the first three weeks of class (or 30% of the class hours) will receive a grade of "W."

Between the end of the fourth week and the end of the eighth week, the student may withdraw and will receive either a grade of "WP" for a grade of C- or higher, or "WF" for a grade of D+ or lower. This rule does not necessarily apply when a student must withdraw from all classes simultaneously. A student's faculty advisor, instructors, and the Vice President of Academics will make any decisions necessary in this matter.

In the event that a student wishes to withdraw from a class he/she should complete the Withdrawal Form, which is available in the Registrar's Office.



## **Course Descriptions**

More than one hundred courses are offered each year at FCC. The following pages contain the descriptions of those courses, which are regularly offered and are required on various programs.

The first letter in a course number indicates the curricular division in which that course is located: A=Alternative Degree Program course; B=Biblical Studies; G=General Education (Humanities); and M=Ministerial Studies.

The second and third letters indicate the particular area in which a course is assigned. The first digit in a course number indicates the progression of courses in the recommended schedule. Thus "1" represents a course normally taken in the first year, "2," a second year course, etc. The second digit indicates the sequence of a course as it is listed in the catalog within its area. The third digit indicates the term taught or a part of a series.

Some two-hour courses are taught in two one-hour mini-semester courses. The course numbers for those courses are provided in the descriptions below.



## ***LEAD (Learners Empowered to Advanced Discipleship) Course Descriptions***

**ADB 110 Introduction to Biblical Studies.** A survey of the biblical library. The focus is on the major themes of each section of biblical literature (3 credits).

**ADB 210 Origin and Development of the Bible.** This course will present an overview of the chain of communication from God to man: inspiration, canonization, transmission, and translations. Particular focus will be given to the final link of that chain, as we consider the modern English translations which have resulted (3 credits).

**ADB 220 Petrine Epistles.** A study of the life and message of Peter with particular attention given to the exegesis of the canonical epistles I and II Peter. This is briefly augmented with topical studies of Peter's theology and a comparison of his teaching and writing with that of other Apostles and non-canonical works attributed to Peter(3 credits).

**ADB 221 Genesis Seminar.** This course examines the major themes of the first book of the Bible, with special emphasis on their implications for foundational Christian doctrines, the nature and purpose of man, and the mission of the church. The foundational Christian doctrines include such topics as God and the Holy Spirit, creation and revelation, sin and salvation, and covenant and Christ. The Genesis introduction of mankind helps resolve such contemporary issues as creation vs. evolution, heterosexual marriage vs. homosexuality, community vs. individualism, and righteousness vs. pluralism. Early glimpses of Christ and the church are caught in God's prophecies to the serpent and to Abraham and in the history of Joseph. Genesis will be seen not just as a book of faith or a perspective on ancient history, but also as an introduction to the rest of the Bible and as the living backdrop to the coming Messiah, his church, and the standard for Christian living today. (3 credits)

**ADB 222 Exodus.** This course overviews the content of, and examines major themes within the book of Exodus. Special emphasis will be given to Moses, the Exodus, the Law, and the Tabernacle, and their relationship to the New Testament, and their implications for Christians. (3 credits)

**ADB 225 James.** A study of the life and message of James: wisdom for moral living. (3 credits)

**ADB 230 Philippians.** An exegetical study of the book of Philippians.(3 credits)

**ADB 240 Pastoral Epistles.** Each of the Pastorals is examined in the light of its historical context. Some attention is given to introduction material, especially to the author and his life following his first Roman imprisonment. There is a verse-by-verse discussion of the text, I and II Timothy and Titus (3 credits).

**ADB 301 Introduction to Bible I.** An overview of the Bible, how it came to be, and suggested skills and resources for serious biblical study. (1 credit)

**ADB 302 Introduction to Bible II.** This course is designed to provide review and integration of the knowledge gained throughout the Bible major, culminating in the Bible Comprehensive Examination.

**ADB 310 From Eden to the Exile.** An overview of Old Testament history with special consideration given to outstanding servant-ministers of each period (3 credits).

**ADB 320 The Ministry of Jeremiah.** The life and ministry of the great sixth century BC prophet are examined for insights into principles of servant-leadership (3 credits).

**ADB 330 Earliest Christianity.** A study of Acts 1-12. The first decade of Christian history

is examined topically. The focus is on principles of Christian leadership (3 credits).

**ADB 350 The Leadership of Paul.** A consideration of the life and message of Paul, the great apostle to the Gentiles. Topics include conversion, travel, miracles and preaching of Paul. The message of each of Paul's epistles is analyzed (3 credits).

**ADB 360 Life and Leadership of Jesus.** An overview of the events of Jesus' life is followed by a topical analysis of his ministry. Topics include Jesus as prophet, priest and king (3 credits).

**ADB 400 Integration of Theology and Psychology.** A biblical model for critiquing theories and principles of psychology is explored. The course will review contemporary approaches to the integration of theology and psychology. The student will apply integrated principles to the psychology of Christian leadership (3 credits).

**ADB 410 Biblical Interpretation.** An introduction to the science and art of Biblical interpretation. This course covers the principles and guidelines for sound Biblical interpretation and systematization of doctrine. Special emphasis is given to determining meaning and significance of Biblical passages (3 credits)

**ADB 435 Introduction to Theology.** An overview of the great teachings of the Christian faith including the doctrine of God, Christ, the Holy Spirit, Sin and Salvation, the Church, and Eschatology (3 credits).

**ADB 440 Theology of Church Growth.** A study of the Biblical and philosophical foundations addressing church growth and practices encouraging and monitoring church growth (3 credits)

**ADG 110 Finite Math.** An introduction to logical structure, sets, probability, statistics, and basic algebraic and geometric concepts (3 credits).

**ADG 120 Composition.** Descriptive and narrative writing with emphasis on effective communication through correct grammar and usage (3 credits).

**ADG 130 Introduction to Psychology.** An introduction to the major categories, principles, and issues for study in the field of applied psychology; historical and philosophical themes will be explored from the perspective of a Christian world view (3 credits).

**ADG 210 Analysis and Research.** A brief course in writing and research for the adult college learner. Instruction focuses on practical writing and research assignments in a variety of forms, including Kolb's Experiential Writing model. Segments are also devoted to basic grammar, planning, MLA style, and a collaborative revision (2 credits).

**ADG 215 Literature of C. S. Lewis.** A thorough study of the life and writings of C. S. Lewis, focusing specifically on his major works of fiction (3 credits).

**ADG 220 Introduction to Philosophy.** Introduction to thinking and philosophy, including traditional and contemporary answers to the human problems of knowledge, reality, God, society, morality and the meaning of life. (3 credits)

**ADG 230 Speech.** This is a basic course in the theory and practice of public speaking. Attention is given to training in the thought process necessary to organize subject content and the personal development of the components of effective delivery (3 credits).

**ADG 240 Evidences.** An introductory study of the factual evidence for historic Biblical Christianity. We will study the nature of the Bible, its reliability and authority, its claims regarding Jesus of Nazareth, and the cultural context in which today's Christian must testify

to his faith (3 credits).

**ADG 280 Music Appreciation.** An overview of music history and a basic introduction to elementary musicianship, emphasizing listening skills. Musical styles and music development from Biblical times as well as musical styles from and a general survey of the development of Western music are discussed.(3 credits).

**ADG 310 Christian Perspectives.** A study of the ways in which we gain and integrate knowledge, test truth claims, form world views and understand God's self-revelation to humankind (3 credits).

**ADG 320 Leadership Ethics.** A study of the theoretical and practical problems of moral conduct and proposed solutions with emphasis upon the nature of ethics, values, obligations and opportunities (3 credits).

**ADM 120 Missions and Evangelism.** This course explores the role, meaning, motives, and some methods of evangelism and missions. Practical counsel for strengthening the evangelistic and mission program in the local church is stressed (3 credits).

**ADM 220 Introduction to Pastoral Ministry.** Introduction to Pastoral Ministry is a course designed to provide the student with an overview of Pastoral Ministry.(3 credits)

**ADM 315 Counseling and Intervention Skills:** Counseling and Intervention is a course that introduces the student to the basics of Pastoral Care and Counseling and employs the basic theology, theory, principles, processes and skills of interpersonal relating. (3 credits)

**ADM 310 Personal Development for Christian Leadership.** The purpose of the Bible College is to educate students for leadership This course facilitates the student in exploring individual ministry/career interests, personality characteristics, values, academic preferences and goals as they relate to ministry/career decisions (3 credits).

**ADM 350 Introduction to Leadership and Management.** A course to equip the pupil with an understanding and operational ability in the leading, organizing, administrating and supervision of a program or organization (3 credits).

**ADM 410 Implementing Leadership Skills.** The investigation of various leadership styles in their application to fulfilling personal and instructional goals. It will also include the identification of personal leadership characteristics and their application to the work environment (3 credits).

**ADM 420 Group and Team Process.** This course is designed to enhance the student's interpersonal communication skills and introduce strategic solution based approaches to problem management and conflict resolution (3 credits).



## ***Division of Bible***

**BCE 400 Bible Comp. Review.** This course is designed to prepare students for the FCC Bible Comprehensive Exam (non-credit).

**BCE 421 Bible Comp. Test.** This exam consists of 150 multiple-choice questions covering the entire range of biblical studies. A score of 130 is necessary to pass this exam (non-credit).

**BCE 422 Bible Comp. Retake.** (non-credit)

**BIN 110 Introduction to Biblical Studies.** An overview of Biblical history, geography and content with an introduction to basic resources for serious study of the Word of God. (3 credits).

**BIN 112 Bible Survey.** An overview of the contents of both the Old and New Testaments with focus on authorship, historical context, and practical application (3 credits).

**BIN 115 Old Testament Survey** An overview of the contents of the Old Testament with special emphasis on the living message of each book (2 credits).

**BIN 210 History of the English Bible.** A survey of the more important personalities and events of the history of the Bible in English, with emphasis on the period of the Reformation in England. Differing translation traditions are examined and modern versions compared and evaluated (2 credits).

**BIN 220 New Testament Backgrounds.** A survey of the geographical, social, political and religious world in which the New Testament was written. The course includes a survey of the history of the Jews from the close of the Old Testament to the second revolt against Rome (3 credits).

**BIN 230 Introduction to Biblical Languages.** A basic introduction to the Hebrew and Greek languages. The focus is on theological vocabulary and the use of language tools in biblical research (3 credits).

**BIN 315 Canonics.** A study of the historical process by which the books of Scripture came to be recognized as authoritative. Special consideration is given to the contents and canonical claims of the Apocrypha and Pseudepigrapha (2 credits).

**BIN 320 Inspiration and Inerrancy.** The Biblical doctrine of inspiration and inerrancy is systematically set forth. Alleged Biblical contradictions and errors are discussed (2 credits).

**BIN 330 Hermeneutics.** An introduction to the science and art of Biblical interpretation. The course covers the importance of sound hermeneutics, hermeneutical principles, and the history of Biblical interpretation (3 credits).

**BIN 340 Biblical Research.** This course is designed to assist students in meeting a requirement in the Bible Division when scheduling prohibits enrollment in the designated course. Students are assigned to a lecture course by the Chair of the Division of Biblical Studies. A term paper on an assigned topic required. This course may be used to fulfill requirements in the areas of the Gospels, the Prophets, or Old Testament History (3 credits).

**BIN 410 Biblical Geography and Exegesis.** An introduction to the historical geography of the Bible. This course is taken in conjunction with the Senior Holy Land Tour when possible (2 credits).

**BNT 111 Life of Christ I.** The life of Christ from his birth to the Great Galilean Ministry (3 credits).

**BNT 121 Life of Christ II.** The life of Christ from the Great Galilean Ministry to the Ascension (3 credits).

**BNT 210 Gospels Seminar.** One of the four Gospels is analyzed as to its origins and theology (2 credits).

**BNT 221 Hebrews.** Aims to acquaint the student with the background, argument, and modern application of the letter. Special emphasis is placed on the finality of the revelation in Christ, the superiority of Christianity to all other religions, and the practical consequences of Christ's absolute lordship (2 credits).

**BNT 225 James.** An exegesis and exposition of the message of the book of James (2 credits).

**BNT 230 Johannine Literature.** A study of 1,2, & 3 John in light of the gnostic ideas that prevailed at the end of the first century (2 credits).

**BNT 240 Pastoral Epistles.** An exegetical study of 1 & 2 Timothy and Titus with special attention given to sound doctrine, the role of women, and church leadership (2 credits).

**BNT 243 Corinthian Correspondence.** An exegetical study of 1 & 2 Corinthians. Special attention is given to the issue of spiritual gifts and Paul as minister (2 credits).

**BNT 245 Prison Epistles.** Introduction material and the texts of Ephesians, Philippians, Colossians, and Philemon are studied noting the striking similarities between Ephesians and Colossians (2 credits).

**BNT 247 Romans and Galatians.** An overview of Romans and Galatians with special attention given to justification by faith, grace, sanctification, freedom in Christ, and Judaizing errors (2 credits).

**BNT 248 Thessalonian Correspondence.** An exegetical study of 1 & 2 Thessalonians. Special attention will be given to eschatology and Paul as minister (2 credits).

**BNT 250 Revelation.** In addition to word studies, attention is given to the general picture of the book. The message of Revelation is portrayed as a tower of truth. The contents of the book are not regarded necessarily to be chronological. (2 credits)

**BNT 260 Foundations of Christianity.** The history of the Christian faith from the Ascension to Paul's Roman Imprisonment (3 credits).

**BNT 320 Petrine Epistles.** An exegetical study of I and II Peter and Jude (2 credits).

**BOT 211 History of Israel.** A study of the history of Israel from the death of Moses through the Conquest, Settlement, Monarchy, and Restoration periods (3 credits).

**BOT 216 Foundations of Hebrew History.** An intensive survey of the Pentateuch with particular attention devoted to the narrative portions of Genesis (3 credits).

**BOT 220 Genesis Seminar.** A careful exegesis of Genesis 1-11. Consideration is given to the Biblical teaching of creation, the fall, the flood, and related matters (2 credits).

**BOT 225 Seminar in Samuel.** A study of the books of Samuel, with special attention to the literary structure of the material. (2 credits)

**BOT 226 Seminar in Kings.** A study of the books of Kings, with special attention to the literary structure of the material. (2 credits)

**BOT 233 Wisdom Literature.** An intensive survey of the books of Job, Proverbs, Ecclesiastes, and Song of Solomon (3 credits).



**BOT 241 Jeremiah.** A study of the ministry of this sixth century prophet. Attention is given to preaching values and the doctrine of prayer (2 credits).

**BOT 244 Isaiah.** A comprehensive survey of the book of Isaiah, focusing on both exegesis and application (2 credits).

**BOT 251 Amos and Hosea.** An analytical and exegetical study of these two eighth century prophets. Attention is given to preaching values (2 credits). (Amos - BOT 252; Hosea - BOT 253)

**BOT 254 Postexilic Prophets.** An exegetical study of the books of Haggai, Zechariah, and Malachi. Special attention is given to the messianic prophecies contained in these books (2 credits).

**BOT 264 8th Century Prophets** An analysis of the message of the three 8th century minor prophets: Amos, Hosea and Micah (2 credits).

**BOT 315 Ezekiel and Daniel.** The background and contents of the two great exilic prophets is surveyed (3 credits).

**BOT 321 Minor Prophets.** The twelve Minor Prophets are analyzed in chronological order. Special attention is given to the historical background, messianic prophecies, and practical application of each book (3 credits).

**BTH 110 Theology of Prayer.** A study of the Biblical teaching on prayer while engaged in the practice of prayer and Bible reading (1 credit).

**BTH 120 Theology of Evangelism and Missions.** See MMI 120 (3 credits).

**BTH 210 The Holy Spirit.** The Biblical doctrine of the person and work of the Holy Spirit is examined in both the Old and New Testaments. Special attention is given to the question of current manifestations of the miraculous gifts of the Spirit (2 credits).

**BTH 220 Kingdom Theology.** A study of the doctrine of the Kingdom especially as it is revealed in the parables of Jesus (2 credits).

**BTH 230 Law and Gospel.** A topical treatment of the Law of Moses with special emphasis on the underlying principles of the individual statutes. The relationship between the Law and the Gospel is discussed (2 credits).

**BTH 240 Biblical Prophetism.** A study of the prophetic institution of the Old Testament with emphasis upon the theological themes of this movement (2 credits).

**BTH 250 Messianic Prophecy.** Exegesis of selected passages with particular emphasis upon personal messianic predictive prophecy (2 credits).

**BTH 260 Theology of Psalms.** This course is a comprehensive survey of the theological issues found in the book of Psalms (2 credits).

**BTH 270 Ecclesiology.** A study of the Biblical teaching regarding the people of God; the nature, the mission and the structure of the church (2 credits).

**BTH 310 Eschatology.** Eschatology is the study of "last things." The purpose of the course is to introduce the student to the Biblical teaching of final things and to various theories concerning the second coming of Christ. Attention will be given to individual and cosmic eschatology, historical surveys of various theories, and special studies (2 credits).

**BTH 321 Introduction to Theology.** An overview of the field of theology is followed by a discussion of the nature and attributes of God as creator, revealer, redeemer, sanctifier, and ruler (3 credits).

**BTH 340 Sex in the Bible.** A study of the theology and sociology of sex in the Bible (2 credits).

**BTH 350 Theological Research.** This course is designed to assist students in meeting a requirement in the Bible Division when scheduling prohibits enrollment in the designated course. Students are assigned to a lecture course by the Chair of the Division of Biblical Studies. A term paper on an assigned topic is required. This course may be used to fulfill requirements in Theology I or Theology III (3 credits).

**BTH 411 Pauline Theology.** A discussion of the theology of Paul from the Pauline letters. Each letter is surveyed and the major theology addressed (3 credits).

**BTH 598 B.Th. Essay (Part 1).** A pass/fail course in which the student prepares, through appropriate research, to write the B.Th. Essay (non-credit).

**BTH 599 B. Th. Essay (Part 2).** A pass/fail course, in which the B.Th. student completes all requirements for the essay and receives the approval of the essay from the college faculty. Prerequisite: BTH 598 (non-credit).

## ***Humanities Division***

**GBK 301 -- 310 Great Books Reading Program.** The Great Books Honors Program is designed primarily for students who wish to enhance their educational experience by reading classic works that have made an impact on western culture and Christian thought. Books comprising the list represent the fields of philosophy, theology, history, fiction, poetry, and science. Included among the readings are books considered important from the Christian perspective (1 credit per term for three terms).

**GDR 110 Drama I.** The course will include a brief history of drama in Western Culture. Also there will be a focus on the technical aspects of drama as a ministry tool in the church, and students will be prepared to successfully plan and implement a drama ministry program (1 credit).

**GDR 115 Drama II.** Using skills learned in Drama Ministry I, students will prepare and perform a full-length drama presentation. As a result of this production, students will understand the time, energy, and commitment level needed in order to produce a major production, always remembering that utmost in their endeavor should be the praise and glory of God and his Son, Jesus Christ (2 credits).

**GEN 110 Composition I.** Descriptive and narrative writing with emphasis on effective communication through correct grammar and usage (meets 6,000 words of Gordon Rule, 3 credits).

**GEN 120 Composition II.** Instruction and practice in effective expository and persuasive writing. Special attention is given to the writing of research papers. The course is designed to promote skill development in areas of study, library research, and written communication (meets 6,000 words of Gordon Rule, 3 credits).

**GEN 310 Advanced Research and Writing.** Designed primarily for those intending to do graduate study in theology. Introduces students to advanced research techniques, including on-line library resources. Strongly emphasizes writing skills (2 credits).

**GHI 210 Ancient History I: The Ancient Near East/World of the Old Testament.** A study of civilizations in the Near East from its beginnings to the zenith of the Persian Empire with a particular focus on cultural practices and political developments which shaped the experience of the Patriarchs and people of Israel (3 credits).

**GHI 215 Ancient History II: The Classical Mediterranean/World of the New Testament.** A study of classical civilizations of the Mediterranean from the polis of Greece to the apogee of the Roman Empire with particular focus on the cultural and political situation of the first century in the Levant (3 credits).

**GHI 220 Western Civilization I.** A study of the political, religious, and social history of Europe from the Roman Empire in the first century through the Italian Renaissance c. A.D. 1500 (3 credits, Gordon Rule: 6000 words).

**GHI 230 Western Civilization II.** A study of the political, religious, and social history of Europe from the Northern Renaissance c. A.D. 1500 to present (3 credits, Gordon Rule: 6000 words).

**GHI 265 American Intellectual History: Religious Cultism.** An introduction to the development and teachings of various cults in America. Includes discussion of such contemporary religious movements as Christian Science, the Watchtower Society, The Church of Jesus Christ of Latter-day Saints, Seventh-day Adventism, Scientology, the Unification Church, the New Age Movement, Freemasonry, Neo-paganism, and the Occult. (3 credits).

**GHI 270 Restoration History.** Provides an overview of the historical development of the American Restoration Movement and analyzes its distinct theological emphasis. (3 credits).

**GHI 310 History of Christianity: Early Church.** A study of Patristic sources for knowledge of the developments, doctrines, and practices of the Christian community from Pentecost through the sixth century (3 credits).

**GHI 330 Historical Geography: Biblical.** A study of geological, topographical, and meteorological factors shaping the development of the culture and history of ancient peoples of the Mediterranean and Middle East (2 credits).

**GHI 360 History of the Middle East.** A study of the history, geography, and culture of Middle East from antiquity to the present with particular attention being given to the roots and fruit of the current socio-political conflict between Arabs and Jews (3 credits).

**GHP 090 H.E.L.P.** One-on-one meetings geared towards student's accountability and improvement in academic areas (Non-credit; required for students on Restriction and Probation).

**GHP 095 H.E.L.P.** Continuation of GHP 090 (Non-credit).

**GHT 210 American Heritage Tour.** The American Heritage Tour turns the American countryside into a college classroom. Students travel with professors to a variety of historic locations, study independently, complete research projects based on sites visited, and create memories designed to enrich the college social experience (3 credits).

**GHT 211 European Heritage Tour.** Students travel with professors to a variety of historic locations, study independently, complete research projects based on sites visited, and create memories designed to enrich the college social experience. (2 credits).

**GLA 322 Hebrew II.** Designed to introduce the student to the fundamentals of Biblical Hebrew. The student will learn foundational elements such as the alphabet, pronunciation, vocabulary, translation, basic grammatical terminology, and usage. Prerequisite BIN 230 (3 credits).

**GLA 326 Greek II.** Continues the work begun in BIN 230 Introduction to Biblical Languages, and provides more fundamentals of Koine Greek. Course requirements include a non-credit one-hour lab each week. Prerequisite: BIN 230 (3 credits).

**GLA 331 Hebrew III.** In this course we will continue studying fundamentals of Hebrew but also devote special attention to advanced grammatical issues. Prerequisite: GLA 322 (3 credits).

**GLA 335 Greek III.** Offers a progressively more advanced exposure to Greek grammar, syntax, reading, and translation. Prerequisite: GLA 326 (3 credits).

**GLA 341 Hebrew IV: Exegesis.** One smaller book of the Old Testament is exegeted and studied from the original Hebrew. Emphasis will be placed in background, interpretation, and application of the book of Micah. The student will appreciate the importance of the Hebrew language in understanding the Old Testament. Prerequisite: GLA 331 (3 credits).

**GLA 346 Greek IV: Exegesis.** Greek Exegesis is designed as a laboratory for implementing and focusing linguistic skills developed throughout the Greek-language curriculum. It gives students a working knowledge of exegetical principles and the experience of applying the historical-grammatical approach to a New Testament epistle. Prerequisite: GLA 335 (3 credits).

**GLT 210 Classics of Christian Literature.** An in-depth, chronological study of five influential Christian texts with supporting historical context and excerpts from other authors. Authors include St. Augustine, Dante, John Milton, John Bunyan, and C. S. Lewis (3 credits).

**GLT 215 Literature of C. S. Lewis.** A thorough study of the life and writings of C. S. Lewis, focusing specifically on his major works of fiction (3 credits).

**GLT 220 American Literature.** Literature in America is approached from historical and theological perspectives with special attention given to literary themes and styles of Hawthorne, Melville, Twain, Hemingway, Steinbeck, and Faulkner (3 credits).

**GLT 240 World Literature.** A survey of worldviews through first-hand accounts. The course focuses especially on world religions as portrayed through literature (3 credits).

**GLT 250 Shakespeare in Film.** A study of notable Shakespearean plays using both the original texts and prominent film versions. Attention will be given to Shakespeare's cultural influence, literary power, unique language, and interpretations suggested by the film versions. (3 credits)

**GLT 330 Theology in Film.** Instruction on analyzing modern film from a Christian point of view. Films selected for study will feature examples of either Christian Theology or Postmodern secular "Theology." Students will be given tools for making moral decisions about movie going and for evaluating a film's content. (3 credits; see MTH 350)

**GLT 280 Spanish Literature in Translation.** A chronological overview of classic works of literature originally written in Spanish. Focus will include cultural studies, major authors, and influence of Spanish-speaking texts on world culture. Students fluent in Spanish will be encouraged to read the texts in the original language.

**GLT 320 Philosophy and Literature of the Skeptic.** A study of authors whose writings and philosophies are set in direct opposition to the fundamental beliefs of the Christian faith. Readings will progress chronologically from Karl Marx to Carl Sagan with specific attention towards an apologetic approach to the worldviews encountered in the literature (3 credits).

**GMA 050 Math Competency Test.** (non-credit)

**GMA 051 Math Competency Retake.** (non-credit)

**GMA 090 Developmental Math I.** Mastery of the seven basic skills (adding, subtracting, multiplying, dividing, fractions, percents, and decimals), basic algebraic skills, and geometric skills. (1 credit, meets for 1.5 hours a week. Does not meet the math requirement.)

**GMA 110 Finite Math.** Introduction to logical structure, sets, probability, statistics, and basic algebraic and geometric concepts. This course is intended for students who are not planning to take further courses in mathematics (3 credits).

**GMA 120 College Algebra.** Inequalities, high degree polynomials, graphs, rational and exponential functions, systems of equations, matrices, and determinants. This course prepares students for higher level mathematics courses. Prerequisite: two years of high school algebra or a college level intermediate algebra course (3 credits).

**GMU 210 Introduction to Music.** A course designed to introduce the student to an

overview of western music history, basic music notation, musical styles, church music, and practical application of the information to teaching and church ministry (3 credits).

**GPE 140 Basketball.** Available for students who are on a school basketball team (.5 credit).

**GPE 150 Softball.** Available to students who are on a school softball team (.5 credit).

**GPE 160 Volleyball.** Available to students who are on a school volleyball team (.5 credit).

**GPE 170 Soccer.** Available to students who are on the school soccer team (.5 credit).

**GPH 110 Evidences.** The credibility of the historical foundations of Christian faith and the factuality of the Biblical record (with emphasis on the New Testament) are measured by the accepted canons of historical investigation (3 credits).

**GPH 210 Introduction to Ethics.** A study of the vocabulary and concepts of ethical theory, with emphasis on the principles, precepts, and practices that constitute Biblical "personal" ethics (3 credits).

**GPH 220 Introduction to Philosophy.** An introduction to the classic concepts, terms, and problems, with emphasis on the distinctive perspectives of theistic and non-theistic world views. Students read selected philosophical works and discuss the value of philosophy for Christian faith and ministry (3 credits).

**GPH 315 Applied Ethics.** Application of ethical principles to social problems such as abortion and euthanasia, capital punishment, genetic engineering, environmental policy, public education, war, immigration policy, the Christian's participation in public life, and marriage and family issues. Prerequisite: GPH 210 (3 credits).

**GPH 320 Philosophy and Literature of the Skeptic.** A study of authors whose writings and philosophies are set in direct opposition to the fundamental beliefs of the Christian faith. Readings will progress chronologically from Karl Marx to Carl Sagan with specific attention towards an apologetic approach to the worldviews encountered in the literature (3 credits). *See GLT 320.*

**GPH 410 Apologetics: Christianity as World View.** This core course is an inquiry into whether Biblical Christianity is intellectually defensible. Five main issues are addressed: the rationality of religious language; the justification of religious belief; the problem of evil; the possibility of miracles; and the validity of religious experience (3 credits).

**GPH 430 History and Logic of Science.** Examination of the origins and development of modern science, with emphasis on the nature, values, and limitations of scientific method. An approach to Bible-science controversies, especially the creation/evolution debate, is clarified. Questions regarding realism, the accumulation of knowledge, and the role of theology in science are considered (3 credits).

**GPH 440 Logic.** An introduction to the basic principles of the inductive and deductive models of logical operations, including categorical, propositional, and (as time permits) predicate systems. Includes a strong emphasis on informal logical fallacies. Makes use of practical exercises designed to develop skill in effective thinking (3 credits).

**GPH 450 Modern Thinkers and the Christian Message.** A critical discussion of the writings of key Enlightenment and Post-enlightenment philosophers, tracing their influence on Western thought and examining their challenge to the Christian world view. Selections are from Descartes, Hume, Kant, Hegel, Locke, Kierkegaard, Nietzsche, Russell, Sartre,

Heidegger, Ayer, Wittgenstein, Quine, Gadamer, Habermas, and Rorty. Prerequisite: GPH 410, GPH 220 (3 credits).

**GPS 110 General Psychology.** An introduction to the major categories, principles, and issues for study in the field of psychology; historical, experimental, and philosophical themes will be explored from the perspective of a Christian world view (3 credits).

**GPS 310 Personality Theories.** This course will review and critique some of the major theories of psychotherapy. The course is designed to discern ways of integrating the principles of psychotherapy into a Biblical model for counseling and ministry (3 credits).

**GPS 313 Developmental Psychology: Children and Adolescent Development.** Combines a chronological and topical approach to child and adolescent development to give emphasis to the biosocial, cognitive, and psychosocial aspects of development at each age level. Prerequisite: GPS 110 (3 credits).

**GPS 317 Developmental Psychology: Adult Development.** This course is a continuation of GPS 313 but may be taken as a separate unit of study. It combines a chronological and topical approach to the study of adult development to give emphasis to the biosocial, cognitive, and psychosocial aspects of development through late adulthood including death and dying. Prerequisite: GPS 110 (3 credits).

**GPS 320 Abnormal Psychology.** This course utilizes the scientist-practitioner approach to the study of psychological problems in human behavior. Emphasis is given to the etiology of anxiety and mood disorders with particular focus on the role of stress and family functioning in enhancing vulnerability to disorders, especially to psychopathology in youth. Consideration is given to cognitive and cognitive-behavioral approaches to assessment and treatment and the effects of several therapeutic interventions. Prerequisite: GPS 110 (3 credits).

**GSC 210 General Biology.** A survey of the major divisions of biology, including microbiology, botany, zoology, and physiology (3 credits).

**GSL 250 Lifelong Leadership Development (Fall term)** Emphasizing service to God and man, this program is designed to provide the student with practical experience that complements classroom instruction. Students participate in a broad range of ministry experiences and identify strengths for service in the local church. LLD is required each term for all degree seeking students. Family Worship Hour and D-Group attendance are included in LLD requirements. Program completion is a requirement of each degree program (non-credit).

**GSL 251 Lifelong Leadership Development (Spring term)** See GSL 250 (non-credit).

**GSO 210 Christianity and Contemporary Culture.** An examination of dominant values in contemporary American society, from a historical and a Christian perspective. The course includes discussions of economics, education, politics, technology, and trends in popular culture and the arts, with emphasis on their effects on Christian ministry and family life (2 credits).

**GSO 220 Introduction to Sociology.** The nature and application of sociological concepts, theories, and methods; analysis of societies processes and social change (3 credits).

**GSP 230 Speech: Public.** This is a basic course in the theory and practice of public speaking. Attention is given to training in the thought process necessary to organize subject content and the personal development of the components of effective delivery. (If you

declare Preaching in course will not transfer as GSP 235. A preaching person must take GSP 235) (3 credits).

**GSP 235 Speech: Pulpit.** An introductory course in homiletics designed to assist the student in the preparation and delivery of sermons (3 credits).



## ***Ministry Division***

### **Adult Education**

**MAE 210 Introduction to Adult Education.** An overview of the principles of adult education and an introduction to programming for adults (2 credits).

**MAE 220 Adult Education Leadership.** An examination of the administrative and programmatic issues relative to establishing and maintaining a Christian Education program in the local church. The relationship of the Minister of Christian Education to other members of the church staff is explored. (3 credits)

### **Christian Education**

**MCE 212 Introduction to Education.** An overview of the foundations of public and religious education with an emphasis on history and philosophy of education (3 credits).

**MCE 220 Educational Psychology.** A course designed to develop within the prospective teacher the ability to recognize and utilize the basic principles and strategies of sound educational psychology in teaching (3 credits).

**MCE 310 Methods of Teaching.** A practical course in teaching methods, applying the principles learned in MCE 220. Emphasis is on relating particular teaching methods to the various age levels and to fulfillment of objectives. Time is spent in practice teaching (3 credits).

**MCE 320 Educational Administration.** A course to equip the student with an understanding of an operational ability for the leading, organizing, administrating, and supervising of a program or organization (3 credits).

**MCE 330 Group Dynamics.** A study of communication behavior in small groups from a systems perspective (with application in the church context). Specific attention is given to creating a positive small group climate, small group effectiveness, and methods for introducing positive change (2 credits).

**MCE 341 Instructional Resources.** A course using a variety of methods for creating and using audio-visual media, along with an examination of resources available to educational endeavors, including curricula, local and state agencies, facilities, and personnel (2 credits).

**MCE 345 Online Resources.** An in-depth exploration of electronic technology that teaches students information-seeking strategies, critical thinking ability, and life long learning skills needed in an information society (1 credit).

**MCE 350 Minister As Educator.** An overview of the minister's role and involvement in the educational ministry of the local church. Special emphasis is given to administrative procedures and teaching techniques (3 credits).

**MCE 420 Program Development Strategies.** This course examines the various strategies used in the development of programs to meet the needs of the organization. Included in the course is the application of assessment, evaluation, and planning for the purpose of program improvement (2 credits).

### **Church Growth**

**MCG 330 Principles of Church Growth:** This course examines Biblical and Contemporary patterns of church growth in the American Church. The history of the "church growth movement" is reviewed and the principles are critiqued. A project is required for this course. (2 credits, for Spanish focus, see MSM 330).

**MCG 430 Assimilation Principles:** The strategies for the assimilation of new members into the congregation are reviewed: inclusive of small group ministry, ministry systems, and transitions from one stage of growth to another. (1 credit)

**MCG 530 Assimilation Principles:** The strategies for the assimilation of new members into the congregation are reviewed: inclusive of small group ministry, ministry systems, and transitions from one stage of growth to another. A project is required at this level of study. (3 credits)

**MCG 440 Biblical Principles for Growing Healthy Churches:** This course stresses foundational principles for growing Biblically healthy churches. Attention is also given to such issues as leadership, spiritual gifts, church structure, small groups, worship, and evangelism. (2 credits)

**MCG 540 Biblical Principles for Growing Healthy Churches:** This course stresses foundational principles for growing Biblically healthy churches. Attention is also given to such issues as leadership, spiritual gifts, church structure, small groups, worship, and evangelism. A project is required for this level of study. (3 credits)

**MCG 450 Urban Evangelism and Church Planting:** An investigation of the central principles that govern the ministry of church planting in the Spanish context will be conducted. A wide variety of methodologies, models, philosophies, resources and case studies will be examined. (3 credits)

**MCG 460 Seminar in Church Growth:** A course in selected areas of study relating to church development and church growth. (2 credits)

**MCG 560 Seminar in Church Growth:** A course in selected areas of study relating to church development and church growth. A project is required for this level of study. (3 credits)

### **Children's Ministry**

**MCM 410 Instructional Strategies in Children's Ministry.** Analysis of teaching and learning styles in view of developmental needs and objectives appropriate to children; practice in creating learning environments, planning for instruction, and using appropriate methods for the classroom and a variety of children's ministry settings. (2 credits)

**MCM 415 Role of the Children's Minister.** An examination of the administrative and programmatic issues relative to establishing and maintaining a Children's Ministry program. Emphasis is on planning, recruiting, training and maintaining volunteers, as well as current safety and liability issues. (2 credits)

**MCM 420 Children's Ministry Practicum.** An independent study designed to allow advanced students an opportunity to develop a particular skill in children's ministry leadership. The course may receive one-half credit, one credit, or two credits as determined appropriate by the instructor and approved by the Division Chair (MCM 420 -.5; MCM 421-1; MCM 422 – 2 credits)

### **Counseling**

**MCO 210 Introduction to Counseling.** A Biblical model of helping is introduced for the accomplishment of the pastoral care and counseling ministry of the church. The student must discriminate between levels of helping responses and demonstrate the use of interpersonal communication skills (Prerequisite GPS 110), (3 credits).

**MCO 320 Interpersonal Growth.** This class introduces the student to the factors that

contribute to or hinder interpersonal growth. The student will gain insight into his or her interpersonal style of relating and create strategies for self-improvement (Prerequisite GPS 110 and MCO 210) (2 credits).

**MCO 340 Crisis Counseling.** This class is designed for all church workers and leaders who have opportunity to work with individuals and/or families in crisis. The course will: (a) study the dynamics of a crisis in a person's life, (b) survey the steps in crisis management in various situations, and (c) examine the role of the church in the provision of support and prevention (Prerequisite GPS 110 and MCO 210) (2 credits).

**MCO 345 Counseling Strategies.** Counseling Strategies purposes to provide a foundation for individuals to develop the applied skills used in a number of different human service fields. The student is introduced to the modalities and skills used for immediate, short-term, and long-term helping. (Prerequisite or co-requisite GPS 310 and Prerequisite GPS 110 and MCO 210)

**MCO 360 Ministry with Older Adults.** Ministry with older adults reviews the psychological, social, economic, and political issues of older adults in the United States. The course reviews activities for the development of an effective ministry with older adults in the congregation (Prerequisite GPS 110 and MCO 210) (2 credits).

**MCO 370 Marriage and Family Enrichment.** This course is designed to give an overview of the church's ministry to couples and families. The student will apply marriage and family enrichment activities to self and others. Resources and strategies for ministry to couples and families will be introduced. (Prerequisite GPS 110 and MCO 210) (2 credits)

**MCO 391 Counseling Internship: Part A – Overview.** This foundation course is designed to assist the student in preparing for a supervised educational field experience in a community-counseling agency. The course is for persons who are completing a counseling or youth and family ministry specialization and who are desirous of completing an internship in a community mental health agency or with a church agency or ministry specializing in mental health concerns.

**MCO 392 Counseling Internship: Part B – Contract with a Host Agency.** This foundation course is designed to assist the student in preparing for a supervised educational field experience in a community-counseling agency. The course is for persons who are completing a counseling or youth and family ministry specialization and who are desirous of completing an internship in a community mental health agency for the completion of the internship requirements.

**MCO 393 Counseling Internship Debriefing.** The student will participate in a seminar-type environment where reports are given in examination and evaluation of the field experience; problems the student encountered and how the student was able to deal with them are reviewed; special contributions the intern made to clients and/or the counseling agency are outlined; and new goals the intern has formulated for his or her future are listed.

**MCO 398 Counseling Internship: Field Experience.** The end goal is to afford the student an opportunity to integrate and apply classroom learning to practical life experiences within a supervised setting and to prepare the student for advanced study and work in a behavioral science field. (3 credits; 6 required; summer term or two terms)

**MCO 419 Counseling Practicum** An independent study designed to allow advanced students an opportunity to develop a particular skill in counseling. The course may receive one-half credit, one credit, or two credits as determined appropriate by the instructor and approved by the Division Chair (MCO 419 -.5; MCO 420-1; MCO 421 – 2).

## **Elementary Education**

**MED 310 Teaching Science to Children.** Selected concepts: organizing for instruction, techniques, and evaluation procedures (3 credits).

**MED 323 Teaching Fine Arts to Children.** A study of art, drama, and music methods that may be used in teaching subject content in the elementary classroom. The course also includes a study of area-specific (art, music, drama) instruction. (3 credits).

**MED 330 Foundations of Reading.** An introduction to reading: principles, procedures, and current practices. Study of specific techniques and materials for word attack and comprehension (3 credits).

**MED 335 Corrective Reading Strategies.** The development of basic testing, diagnostic and corrective teaching skills in the area of reading is the overall emphasis of this course. The understanding of the causes and patterns of reading disability will be explored along with the appropriate approaches to correcting deficiencies. Prerequisite: MED 330 (3 credits).

**MED 340 Teaching Math to Children.** A course to develop skills in the areas of math concepts, methods of teaching math, sequence of learning math, use of math manipulatives, and development of math enrichment/remediation (3 credits).

**MED 350 Language Arts for Children.** Content, principles, materials, and techniques involved in teaching speaking, listening, writing, and spelling in the elementary school, organizing for instruction (3 credits).

**MED 355 Introduction to Classroom Spanish.** An introduction to Spanish with focus on the development of language skills needed to communicate with Spanish-speaking students in the classroom setting (3 credits).

**MED 360 Children's Literature.** A general survey of books and materials available, considered in terms of interests, needs and abilities of children (3 credits).

**MED 380 Social Science for Children.** Teaching social studies and social science in the elementary school with selected themes, problems, and concepts, organizing for instruction, techniques, evaluation procedures (3 credits).

**MED 390 Children's Health Education.** Organization, practice, and conduct of health (including drug abuse) and physical education programs in the elementary school (3 credits).

**MED 410 ESOL.** The development of teaching strategies appropriate for the classroom teacher to adapt material for learners whose primary language is not English (3 credits).

**MED 420 Exceptional Children.** This course will assist educators in recognizing various learning styles and challenges, interpreting diagnostic and psychological testing, and adapting curriculum to the needs of ESE students. Curriculum scope will cover the areas of educable mentally handicapped, trainable mentally handicapped, learning disabled, physically handicapped, emotionally disturbed, autistic, language disordered, ADHD, and Gifted. Emphasis will be placed on the application of PL94-142 and the Americans for Disabilities Act (3 credits).

**MED 451 Classroom Management.** An overview of various strategies for effective classroom management, including a review of general methods and strategies, especially for students from multi-cultures, and basic teacher competencies (3 credits).

**MED 485 General Knowledge Test.** (0 credits)

**MED 486 Subject Area Exam (K-12).** (0 credits)

**MED 487 Professional Education Exam.** (0 credits)

**MED 491 Practicum I.** Practicum I is designed to provide the pre-service teacher with an introductory experience in integrating theory and practice in the elementary classroom. Students will observe and participate in an elementary classroom (2 credits).

**MED 492 Practicum II.** Practicum II is designed to provide the pre-service teacher with specific opportunities to integrate theory and practical application in the methods of teaching in a given content area. Students will observe and participate in an elementary classroom and will plan and implement lessons within that setting (2 credits).

**MED 493 Practicum III.** Practicum III is designed to provide the pre-service teacher with a concentrated experience in integrating theory and practical application in the methods of teaching in a given content area. Students will observe and participate in an elementary classroom and will plan and implement lessons and instructional units within that setting (2 credits).

**MED 498 Elementary Education Internship.** A total of fourteen to sixteen weeks is spent in a supervised elementary classroom (9 credits).

### **Christian Ministry Foundations**

**MIN 220 Ministry as Life's Work.** The purpose of the Bible college is to train students for leadership ministry in the church. This course should facilitate the student in exploring individual ministry/career interests, personality characteristics, values, academic preferences and goals as they relate to ministry/career decisions (2 credits; Co-requisite: MIN 225).

**MIN 225 Core Communication.** The practice of communication skills to enhance the student's intrapersonal and interpersonal confidence (1 credit; Co-requisite: MIN 220).

**MIN 310 Models of Leadership.** The investigation of various leadership styles in their application to fulfilling personal and institutional goals. It will also include the identification of personal leadership characteristics and their application to a work environment (3 credits).

**MIN 391 Internship: Part 1A (Preparation).** This internship foundation course is designed to assist the student in preparing for a supervised educational field experience. The course is for all ministry interns and focuses on understanding the internship program, generally organizing for the program, confirming the location of the field experience, and establishing the basic Action Plan for the field experience (1 credit).

**MIN 392 Internship: Part 1B (Preparation).** This internship foundation course is a continuation of MIN 391 and is designed to assist the student in specific preparation for the supervised educational field experience. The course focuses on working with the Coordinator and Field Supervisor to prepare specifically for the Intern's Field Experience (1 credit).

**MIN 393 Internship: Part 3 (Completion and Debriefing).** The purpose of Internship III is to provide the student an opportunity to share ministry experiences with other students who have completed their internship experience, and to create a plan of action for personal and professional growth (1 credit).

**MIN 396 and MIN 398 Internship: Field Experience.** The purpose of Internship II is to provide the student with the opportunity to experience ministry in a specific ministry location under the supervision of an experienced minister. During this term (usually the summer term), the student is on-site in a ministry setting and participates actively in ministry experiences. Credit awarded is based on the number of clock hours worked. One hundred (100) clock hours are required per credit hour.

**MIN 410 Ministry Issues.** This course seeks to help the student assess the impact of current events on Christian life and witness, suggest Biblical critiques, and help generate ideas for response to such developments in each ministry (1 credit).

**MIN 420 Ministry Practicum** (Youth Ministry, Preaching, Missions, Christian Leadership) An independent study designed to allow advanced students an opportunity to develop a particular skill in ministry leadership. The course may receive one-half credit, one credit, or two credits as determined appropriate by the instructor and approved by the Division Chair (MIN 420 -.5; MIN 421-1; MIN 422 – 2 credits)

### **Cross Cultural Ministries (Missions)**

**MMI 120 Missions and Evangelism.** This course explores the role, meaning, motives, and methods of evangelism and missions. Practical counsel for strengthening the evangelistic and mission program in the local church is given (3 credits).

**MMI 320 Preparation for Mission Service.** The life and work of the missionary is studied with special attention given to the preparation necessary for cross-cultural ministry. Personal qualifications and responsibilities are balanced with the nature of the work of the field (2 credits).

**MMI 340 World Religions.** Examines the religious beliefs and practices of some of the non-Christian peoples among whom Christian missionaries are working today. The nature of religion along with a wide variety of religious systems is discussed. Special attention is given to Animism, Hinduism, Buddhism, and Islam (2 credits).

**MMI 351 History of Missions.** This is a historical survey of the practice of mission and growth and decline of the church from Pentecost to the present. Specific attention will be given to major movements, key missionaries, issues in mission, political events, cultural conditions, and mission minded churches that have affected Cross-Cultural Ministries. Graphics showing the growth of the mission enterprise will be a unique feature of this course. An effort will be made to ascertain lessons from the past that are applicable today (3 credits).

**MMI 360 Cultural Anthropology.** A study of the dynamics of culture and their significance for understanding variations in orientation with a view to effectively approaching people with the Gospel and seeing their lives conform to Christ (3 credits).

**MMI 371 Missions in the Restoration Movement.** This is a study of specific missions and missionaries who have been selected to give an overview of the mission work of the Christian Churches. Special attention will be given to pivotal events, persons, churches, and missions. Although the background of the development of direct support missions will be considered, the concentration will be on current mission work (2 credits).

**MMI 380 Theology of Missions.** The course explores the theology of missions and the Biblical principles relating to missionaries, mission fields, the mission and the missionary church (3 credits).

**MMI 420 Contemporary Issues in Missions.** This is an advanced course for students with some familiarity with Cross-Cultural Ministries. Several issues that are currently being debated by missiologists and church leaders will be presented and discussed. The course is designed to be flexible to allow new topics or issues of interest to the students to be inserted in the course schedule. Attention will be given to biblical principles that will help resolve the conflicts and prepare the students to face unforeseen issues of the future (2 credits).

**MMI 470 Strategies for World Evangelization.** A presentation of methodology for

planning strategies for world evangelization. The course emphasizes a people-centered approach which defines the mission, analyzes the strategy, selects methods, and evaluates outcomes produced by a particular strategy (3 credits).

## **Music**

**MMU 110 Voice Class.** A basic course for beginning voice students in proper voice development. This course does not meet the applied music requirement for the Music Specialization (.5 credit).

**MMU 121-122 Vocal Ensemble (New Creation).** A select group chosen for the purpose of representing the College in public relations programs. Auditions for this group are conducted with a view to discovering those who excel in musical ability and who possess a well-rounded Christian personality. This course does not meet the applied music requirement for the Music Specialization (1 credit).

**MMU 125 Instrumental Ensemble.** This is a performance-orientated class which is open to all music and non-music majors who are at least on the intermediate level on a band instrument. (1 credit)

**MMU 130 Introduction to Music Theory.** The study of foundational concepts of notation rhythm, major and minor modes, intervals, and chord construction. This course is designed for non-music majors or for those who lack the background for the course, MMU 330 Theory 1 (1 credit).

**MMU 145/146, 245/246, 344/346, 445/446 College Choir.** This group strives to achieve a technical balance and tonal maturity, which is consistent with the use of the finest student voices (1 credit each term).

**MMU 165 Piano Lab.** Individual and group instruction to develop good playing skills on the piano. This course is designed for students who are either beginners or still in the first levels of playing. (.5 credit)

**MMU 210 Worship Leadership.** Worship-leading techniques for planning and conducting a worship service. The relationship of the worship leader to the accompanist, the preacher, and the congregation is noted in conjunction with an appreciation for correct selection of songs. This course also includes elementary conducting patterns (1 credit).

**MMU 280 Song Writing.** The study of basic concepts and principles in developing a song composition, with an emphasis to the relationship of lyrics, music, and theology (2 credits).

**MMU 255 Weekend Worship Ministry seminar.** An advanced seminar in the study and application of worship ministry principles (1 credit).

**MMU 301 Music and Worship Research.** This is a course is designed to assist students in meeting the requirement of Ministry Division to fulfill an extra credit in worship studies. A term paper in an assigned music and worship topic is required. (1 credits)

**MMU 305 Basic Orchestration.** An introduction to the fundamental principles of arranging music for an instrumental ensemble (2 credits).

**MMU 330 Music Theory I.** Analysis of melody together with a study of three and four part harmony. Key, mode, scale, pitch, chord structure, inversions, and harmonic progression are examined. Prerequisite: MMU 130 or pass the placement exam (2 credits).

**MMU 331 Sight-singing and Ear Training I.** This course is designed to develop sight-reading and aural skills for the music major through melodic and rhythmic dictations, solfege singing, and other aural and reading exercises. (1 credit)

**MMU 336 Music Theory II.** A course developing skills of writing, analysis, and performance of 4-part voice leading and harmonization as well as a study of examples from different historical periods. Intermediate level of sight-singing, ear training, and keyboard harmony (3 credits; Prerequisite: MMU 330).

**MMU 337 Sightsinging and Ear Training II.** This course is a continuation of MMU 331 and will incorporate more advanced melodic and rhythmic dictations, solfege reading, and chord progression ear training exercises. (1 credit)

**MMU 338 Music Theory III.** A study in the further development of skills in writing advanced harmony and modulation as well as analyzing different styles of music. The course also includes the writing and analysis of species counterpoint. Advanced level of sight singing, ear training, and keyboard harmony (3 credits).

**MMU 380 Music History and Literature I.** A study of music in earliest backgrounds, its development and resulting literature. The influence of cultural factors on music is examined (3 credits).

**MMU 385 Music History and Literature II.** The continuation from Music History and Literature I of a survey of music and its development in Western civilization from ancient times to the twentieth century. Included is a study of representative musical works within the style of each period. Emphasis is given to an understanding of musical concepts in light of their historical background (3 credits).

**MMU 480, (481) Music Practicum.** An independent study designed to allow advanced students an opportunity to develop a particular skill in music ministry leadership. The course may receive one-half credit, one credit, or two credits. Number of credit(s) awarded is based upon a list of criteria which includes the number of seat hours, in addition to pre-conference and post-conference assignments. (MMU 480 - .5 credit; MMU 481 - 1 credit; MMU 482 - 2 credits).

### **Music Education**

**MMUE 311 Adult Choral Leadership.** General choral procedures with emphasis on the conducting of choirs, teen through adult. There will be instructional as well as practical application included in this course (2 credits; Prerequisite: MMU 210)

**MMUE 315 Advanced Conducting.** A continuation of Adult Choral Leadership with emphasis on the perfecting of patterns, rhythm dictation, rehearsal planning, and score preparation (2 credits; Prerequisite MMU 311).

**MMUE 321 Children and Adolescent Music Methods.** An overview of the history of music education and a study of music education methods for teaching K-12 (3 credits).

**MMUE 391 Woodwind Methods.** A study of woodwind instruments achieved by learning to play a woodwind instrument, and acquiring the knowledge of materials and skill level needed for developing a woodwind program in a church or school (3 credits).

**MMUE 393 Brass Methods.** A study of brass instruments achieved by learning to play a brass instrument, and acquiring the knowledge of materials and skill level needed for developing a brass program in a church or school (3 credits).

**MMUE 397 String/Percussion Methods.** A study of string and percussion instruments achieved by learning to play a stringed and percussion instrument, and acquiring the knowledge of materials and skill level needed for developing a string and percussion program in a church or school (3 credits).



**MMUE 480 Music Education Practicum.** An independent study designed to allow advanced students an opportunity to develop a particular skill in music ministry leadership. The course may receive one-half credit, one credit, or two credit, depending upon the designation by the instructor. (2 credits)

**MMUE 498 Music Education Internship.** This internship is designed for the music education student who desires teaching experience in the school music classroom or certification (9 credits).

### **Music: Instrument Lessons**

**MMUL 120/220/320/420 Private Percussion.** Individual instruction to develop playing skills on percussion instruments. Each one-half hour lesson per week is suited to the level of proficiency of the student (.5 credit)

**MMUL 130/230/330/430 Private Strings.** Individual instruction to develop playing skills on stringed instruments. Each one-half hour lesson per week is suited to the level of proficiency of the student (.5 credit)

**MMUL 140/240/340/440 Private Brass.** Individual instruction to develop playing skills on brass instruments. Each one-half hour lesson per week is suited to the level of proficiency of the student (.5 credit)

**MMUL 141/142 Private Trumpet.** Individual instruction to develop playing skills on the trumpet. Each one-half hour lesson per week is suited to the level of proficiency of the student. (.5 credit).

**MMUL 143/144 Private French Horn.** Individual instruction to develop playing skills on the French horn. Each one-half hour lesson per week is suited to the level of proficiency of the student (.5 credit).

**MMUL 151/152, 251/252, 351/352, 451/452 Private Voice.** Individual instruction is given seeking to develop good singing skills. In addition to the mechanics of singing, each student will work on repertoire (.5 credit each term).

**MMUL 355, 455 Advanced Private Voice.** Individual instruction given to advanced voice students. Admission is by special audition only (1 credit).

**MMUL 161/162, 261/262, 361/362, 461/462 Private Piano.** Individual instruction to develop playing skills on the piano. Each one-half hour lesson per week is suited to the level of proficiency of the student. (.5 credit each term).

**MMUL 163/165 Piano Lab.** Group instruction in beginning piano to develop good reading, rhythmic, and playing skills. This course incorporates basic note reading, finger technique, and keyboard playing. Individual attention is also given to each student (.5 credit per term).

**MMUL 171/172, 271/272, 371/372, 471/472 Private Organ.** Private lessons of one half-hour per week suited to the level of proficiency of the student (.5 credit each term).

**MMUL 180/280/380/480 Private Woodwinds.** Individual instruction to develop playing skills on woodwind instruments. Each one-half hour lesson per week is suited to the level of proficiency of the student (.5 credit)

**MMUL 190/290/390/490 Private Guitar.** Individual instruction to develop playing skills on the guitar. Each one-half hour lesson per week is suited to the level of proficiency of the student (.5 credit)

## **Preaching**

**MPR 310 Preaching and Interpretation.** See BIN 330 (3 credits).

**MPR 320 Art of Preaching.** Advanced principles of sermon preparation, delivery, and audience analysis are emphasized with special attention being given to the development and presentation of expository sermons ( Prerequisite GSP 235) (3 credits)

**MPR 330 Church Administration.** A course to equip the student with an understanding of an operational ability for the leading, organizing, administrating, and supervising of a program or organization (3 credits).

**MPR 340 Christian Ministry.** A course dealing with the minister's personal life and etiquette, ministerial ethics, and the role of the preacher as a servant leader (3 credits).

**MPR 350 Planned Preaching.** This course will explore the homiletical methodology involved in preparing a year's program of preaching on specific topics and types of Biblical material (2 credits).

**MPR 368 Preaching Values in the Bible.** This course explores the homiletical methodology involved in preparing sermons on specific types of biblical literature (3 credits).

## **Spanish Ministry**

**MSM 300 Ministry with the Spanish Speaking.** A study of ministry models and techniques that have proven to be successful in the context of ministry to speakers of Spanish. Successful ministries to both Spanish speakers in the United States and to Spanish speakers outside the United States will be studied.

**MSM 310 Spanish Culture Today.** The development, present status, and possible future trends of the culture of Spanish speakers will be studied. A particular emphasis will be placed on cultural issues that either represent opportunities for the application of the gospel or represent challenges to the gospel.

**MSM 420 Principles of Church Growth (Spanish focus).** This course examines Biblical and Contemporary patterns of church growth in the Spanish community. The history of the "church growth movement" is reviewed and the principles are critiqued. A project is required for this course.

**MSM 425 Urban Evangelism and Church Planting (Spanish focus).** An investigation of the central principles that govern the ministry of church planting in the Spanish context will be conducted. A wide variety of methodologies, models, philosophies, resources and case studies will be examined.

## **Ministry Theology**

**MTH 210 Discipleship.** This course has a two-fold purpose: (a) to teach principles of discipleship and their application to the student's own life, and (b) to train the student to communicate those principles to others. The course will cover the principles, history, and issues of modern disciple making (2 credits).

**MTH 310 Integrative Studies.** This course will review and critique some of the major theories of psychotherapy. The course is designed to discern ways of integrating the principles of psychotherapy into a Biblical model for counseling and ministry (Prerequisite or co-requisite GPS 310) (3 credits).

**MTH 315 Forgiveness and Reconciliation.** This course integrates theological and psychological perspectives of forgiveness and reconciliation.

**MTH 330 Music and Worship.** The role of music in fulfilling worship is studied from a Biblical, historical and musical perspective. Hymnology is incorporated into this course. Music proficiency is helpful but not required (2 credits).

**MTH 350 Theology in Film.** Instruction on analyzing modern film from a Christian point of view. Films selected for study will feature examples of either Christian Theology or Postmodern secular "Theology." Students will be given tools for making moral decisions about movie going and for evaluating a film's content. (3 credits; see GLT 330)

### **Youth and Family Ministry**

**MYM 210 Philosophy of Youth Ministry.** An overview of the work of the youth minister with special emphasis on the development of programming youth instruction and activities (3 credits).

**MYM 330 Priorities and Planning in Youth Ministry.** A detailed explanation of planning a one-year ministry to you. This planning will include all activities, special days, and outings. A complete guide to planning a summer calendar is also presented (3 credits).

**MYM 340 Practical Organizational Skills.** The top priority in Youth Ministry is the development of a trained team of Youth Coaches. A method of discipleship ministry is discussed, and a workable plan for discipling young people for service to the Lord is presented (3 credits).

**MYM 350 Family Life.** This course is an overview of the family in its theological, sociological, and psychological context. The student will review practical principles of family living, which will aid in the development of one's own family system, as well as provide insight for ministry to the family through the church (3 credits).

**MYM 410 Youth Ministry Practicum.** An independent study designed to allow advanced students an opportunity to develop a particular skill in youth ministry leadership (1 credit).