

# *Cisthene plumbea* in Louisiana

by

Vernon Antoine Brou Jr., 74320 Jack Loyd Road, Abita Springs, Louisiana 70420

The small lichen feeding arctiidae moth *Cisthene plumbea* Stretch (Fig. 1) is reported by Covell (1984) to occur commonly from New York and Wisconsin to Florida and Texas, with two annual broods. In Louisiana, it is the most abundantly occurring species of the genus across the state (Fig. 2). In Louisiana, *plumbea* has three annual broods occurring about two and one-half months apart, first brood peaking late April (Fig. 3). The population of the second brood is less than the first and the third brood less than the second. The color of *plumbea* forewings is lead gray with costal edge yellow, as is the inner margin, and with a yellow triangular patch at the inner margin near anal angle. The hindwing is mostly pink to reddish-pink, with a lead gray triangular patch near apex. The head and dorsal thorax are lead gray. The collar, tegula and abdomen are also reddish-pink. Occasional specimens occur in which all red color is replaced entirely with yellow.

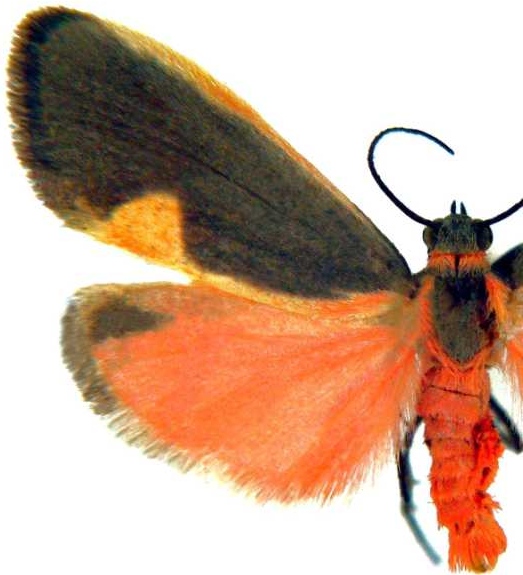


Fig. 1. Adult *Cisthene plumbea*, male.

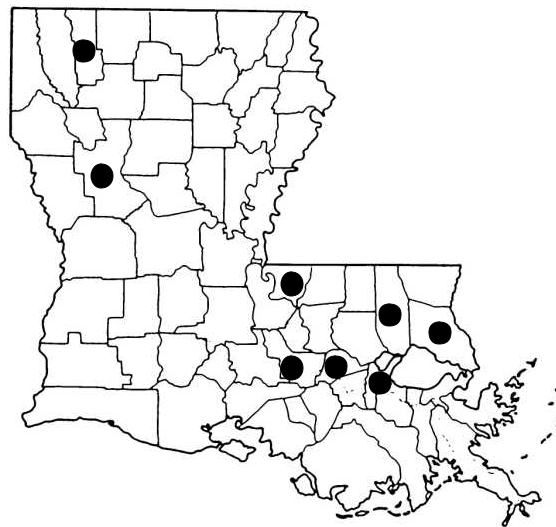


Fig. 2. Parish records for *C. plumbea*.

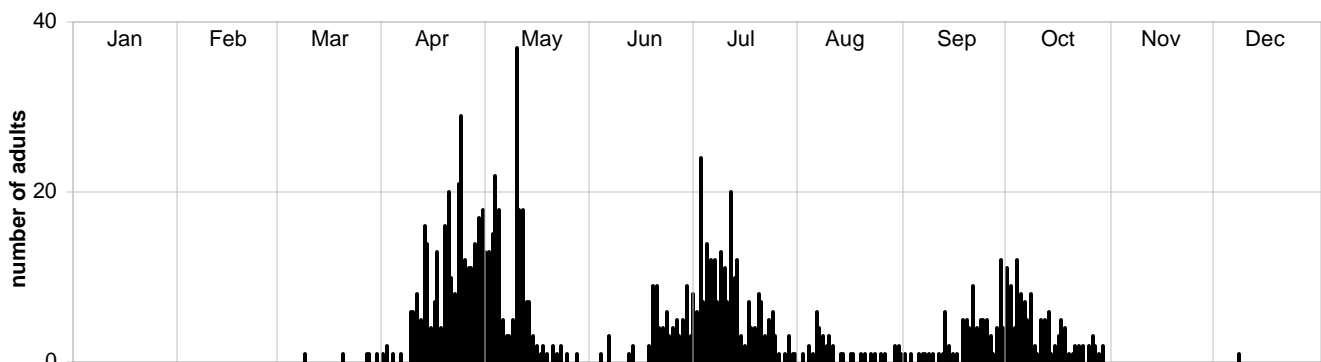


Fig. 3. Adult *Cisthene plumbea* captured at sec.24T6SR12E, 4.2 mi.NE Abita Springs, Louisiana. n = 1016

## Literature Cited

Covell, Jr., C.V. 1984. A field guide to moths eastern North America. The Peterson Field Guide Series No. 30. Houghton Mifflin Co., Boston. xv + 469pp., 64 plates.