



# Special Education Data Report

LEA Performance on State Performance Plan (SPP) Targets  
School Year 2008-2009

## Northern Tioga SD

Where this symbol appears (---), the PDE is not displaying these data on this report to guard against improper statistical comparisons due to small group sizes, and to protect the confidentiality of those students with disabilities who comprise this category.

### Enrollment (School Age)

Source: December 1, 2008 Child Count

	District	State
Total Enrollment ▲	2,246	1,787,351
Total Special Ed Enrollment	339	271,309
Percent of Special Ed Enrollment by Disability ▲	15.1%	15.2%
Autism	5.3%	5.3%
Deaf-Blindness	---	0.0%
Emotional Disturbance	7.1%	9.2%
Hearing Impairment Including Deafness	---	1.0%
Mental Retardation	14.2%	8.1%
Multiple Disabilities	---	1.0%
Orthopedic Impairment	---	0.3%
Other Health Impairment	5.9%	7.0%
Specific Learning Disability	55.8%	51.0%
Speech or Language Impairment	9.1%	16.3%
Traumatic Brain Injury	---	0.3%
Visual Impairment Including Blindness	---	0.4%



### Indicator 3: Participation and Performance in Statewide Assessments

Source: 2009 Assessment Results

Where \* appears less than 40 students in IEP subgroup assessed and/or less than 40 students earned scores at the reported performance levels, and therefore data are not publicly displayed to protect student confidentiality.

#### 3A: Adequate Yearly Progress (AYP)

Grade Span	LEA Met NCLB AYP Target	No. of LEAs in PA Needed to Achieve SPP Target	No. of LEAs that met SPP Target for AYP
3-5	Yes	313	331
6-8	No	291	319
9-12	*	39	43

#### 3B: Participation Rate

Content Area	LEA Rate	State Rate	SPP Target	LEA Met SPP Target
Reading	100.0%	98.6%	95.7%	Yes
Mathematics	100.0%	98.8%	95.7%	Yes

#### 3C: Proficiency Rate

Content Area	LEA Rate	State Rate	NCLB Target	LEA Met NCLB Target
Reading	24.0%	32.7%	63.0%	No
Mathematics	35.4%	38.9%	56.0%	No

### Race/Ethnicity (School Age)

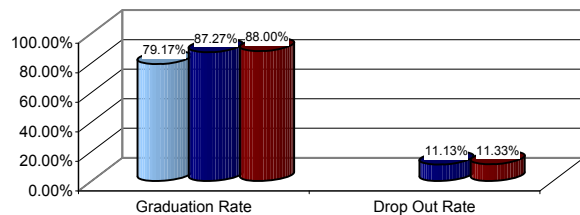
Source: December 1, 2008 Child Count

	Spec Ed	District
American Indian/Alaska Native	---	---
Asian/Pacific Islander	---	---
Black (Non-Hispanic)	---	1.0%
Hispanic	---	0.6%
White (Non-Hispanic)	96.8%	98.1%

### Indicators 1 and 2: Graduation and Drop Out Rates (Ages 14-21)

Source: July 2009 Submission

Where PDE is not displaying LEA data, it is due to small group size



LEA (Light Blue), State (Dark Blue), SPP Target (Red)

	Graduation Rate	Drop Out Rate
LEA met SPP Target	No	---

Graduation Rate = #Grads / (#Grads + #Received GED + #Dropouts + #Reached Max Age + #Died) x 100  
 Drop Out Rate = #Dropouts / (#Grads + #Received GED + #Dropouts + #Reached Max Age + #Died) x 100  
 ▲ = Total Enrollment pending verification



# Special Education Data Report

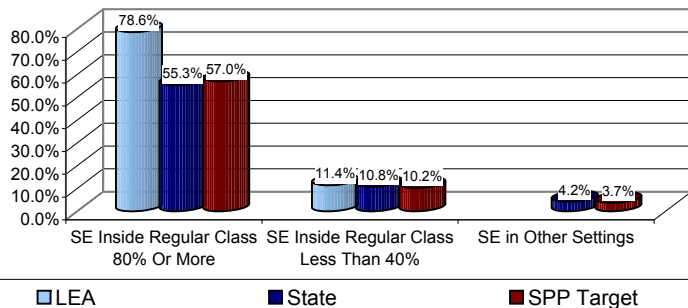
LEA Performance on State Performance Plan (SPP) Targets  
 School Year 2008-2009

# Northern Tioga SD

## Indicator 5: Educational Environments (Ages 6-21)

Source: December 1, 2008 Child Count

Where PDE is not displaying LEA data, it is due to small group size



	SE Inside Regular Class 80% Or More	SE Inside Regular Class Less Than 40%	SE in Other Settings
LEA met SPP Target	Yes	No	---
2008-2009 LRE Index	33	476	134

## Indicator 8: School Facilitated Parent Involvement

Source: 2009 Survey Results

LEA Rate	Confidence Interval	State Rate	SPP Target	LEA Met SPP Target
LEA Not Surveyed	LEA Not Surveyed	34.50%	34.13%	LEA Not Surveyed

## Indicator 9: Disproportionate Representation by Race/Ethnicity

Source: December 1, 2008 Child Count

LEA Rate	State Rate	SPP Target	LEA Met SPP Target
0.00%	0.00%	0.00%	Yes

## Indicator 10: Disproportionate Representation by Disability Category

Source: December 1, 2008 Child Count

LEA Rate	State Rate	SPP Target	LEA Met SPP Target
0.00%	0.00%	0.00%	Yes

## Indicator 11: Timelines for Initial Evaluations (School Age)

Source: July 2009 Submission

LEA Rate	State Rate	SPP Target	LEA Met SPP Target
LEA Not Monitored	97.8%	100.0%	LEA Not Monitored



## Indicator 13: IEP Post-Secondary Transition Goals & Services (Ages 16-21)

Source: Cyclical Monitoring Data 2008-2009

LEA Rate	SPP Target	LEA Met SPP Target
100%	100%	Yes

## Indicator 14: Post-Secondary Employment and/or Education (Ages 16-21)

Source: 2009 Post-School Outcome Survey

LEA Rate	SPP Target	LEA Met SPP Target
LEA Not Surveyed	66.3%	LEA Not Surveyed