

---

# UCLA Transportation

## An Overview

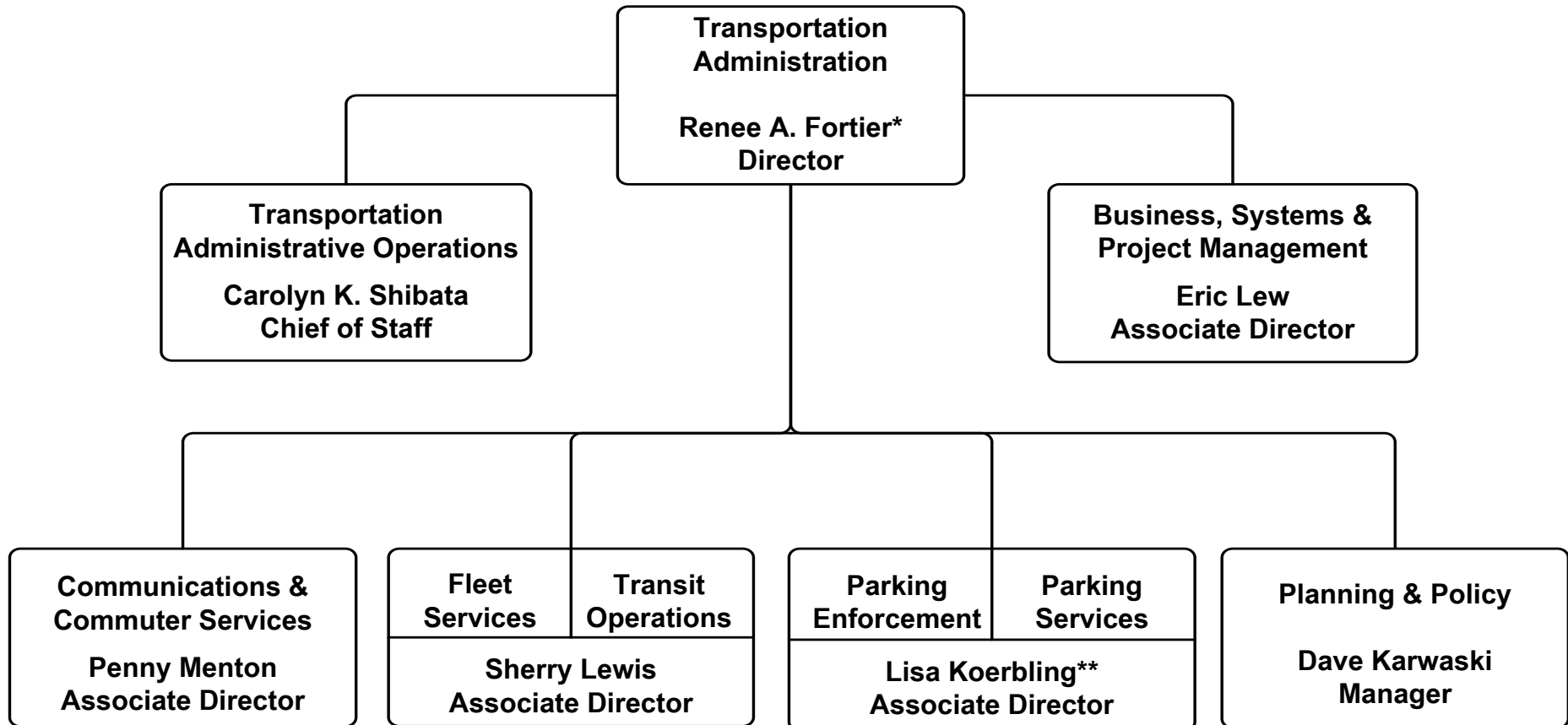
---

**Directors' Videoconference**  
**Presented by Renée A. Fortier, Director**  
**UCLA Transportation**  
**March 22, 2010**

# **Presentation Outline**

- **Organizational Structure**
- **Sustainable Transportation Programs**
- **Parking Services**

# Transportation Organization



\*Reports to the Associate Vice Chancellor-General Services

\*\*Also oversees Finance & Accounting

# Campus Data

## ■ UCLA Population Estimates

	<b>2008</b>	<b>2009</b>	<b>2008-09 Changes</b>
<b>Students</b>	<b>39,650</b>	<b>39,984</b>	<b>+334</b>
<b>Staff Employees</b>	<b>20,879</b>	<b>23,090</b>	<b>+2,211</b>
<b>Academic Employees</b>	<b>7,739</b>	<b>7,933</b>	<b>+194</b>
<b>Total Campus Population</b>	<b>68,268</b>	<b>71,007</b>	<b>+2,739</b>

# **A Paradigm Shift from Parking to Access**

- **Renewed emphasis on sustainable transportation with adoption of UC Policy on Sustainable Practices**
- **Parking fees/citation revenues support a growing alternative transportation program (\$7.8M for 2010-11)**

# **UCLA's Alternative Transportation Programs**

- **Carpools (\$260K)**

- **2,300 carpool permit participants**
- **31% subsidy**

- **Vanpools (\$1.7M)**

- **162 van routes, serving 85 communities**
- **1,700 full-time and 750 part-time participants**
- **50% subsidy**

# TDM Programs

- **Transit Pass subsidies with six agencies (\$2.2M)**
  - 7,850 regular riders
  - 50% subsidy
- **Bus to Rail (Amtrak)**
- **FlyAway bus to LAX**
- **Bicycle**
  - Student ridership doubled in five years
  - Departmental bikes launches
  - Bike Library funded for 2010-11

# **TDM Programs (cont'd)**

- **Commute Support Services (\$3.5M)**
  - **Campus Shuttle**
  - **Marketing/Promotions**
  - **Car-Share**
  - **Emergency Ride Home (ERH)**
  - **RideCard**
  - **Program Analysis and Planning**
  - **Compliance Administration**
  - **OSD/CSO Evening Van**
  - **iWalk Program**



# **TDM Success**

- **Employee drive alone rate reduced from 69% in 1990 to 53% in 2009**
  - **Air Quality Management District mandated 1.5 AVR target exceeded for more than 6 consecutive years; currently 1.67**
  - **Combined campus AVR, including students, is 2.90 (regional avg. is 1.30)**
- **Campus traffic cordon count declined for the past 6 years – now at lowest level since 1990!**

# Parking Overview

# Parking Demand

- Decreased through provision of TDM and on-campus housing
- No Wait List for student parking since Fall 2004
- UCLA is committed to alternative transportation to continue to control parking demand and vehicle trips
- Future parking construction limited to meet area specific needs

# **Balancing the Needs of Multiple Constituencies**

- **24,000 parking spaces for a 71,000 daily population**
- **32,000 parking permits issued quarterly (100,000+ annually)**
- **10,000 event arrangements**
- **2.2 million daily sales annually**

# **Parking Services Approach**

- **Manage financial health over 10 year horizon**
  - **Maintain sufficient reserves to weather unexpected financial pressures and avoid large fluctuations in permit fees**
- **Structure student/staff permit fee increases in small, annual increments**

# **Financial Impacts on Parking**

- **Planned FY 2009/10 permit fee increase deferred**
- **Both TDM success and economic climate have impacted revenues**
  - **Permit sales down (\$1.1M)**
  - **Event/courtesy sales down (\$450K)**
- **Temporary increase in ground rent (now \$4.4M/yr.)**

# **Financial Impacts on Parking (cont'd)**

- **Structural/seismic repairs to parking structures are using reserves**
  - **PS E seismic (\$1.6M)**
  - **PS 8 seismic/HVAC (\$2.9M)**
  - **PS 8 ramp (\$1.2M)**
  - **PS 8 top deck repair (\$2.5M)**
- **TDM subsidies from parking**
  - **Increasing by \$500K for 2010-11 due primarily to spiraling transit pass costs**

# Measures Taken to Mitigate Impacts on Net Revenues

- **Aggressive expense management**
  - **Parking information booths closed and/or hours reduced**
  - **Positions eliminated or held open**
  - **Vehicle purchases deferred**
  - **Major maintenance deferred**
- **Revenue increases**
  - **New DP visitor parking fee**
    - **\$3 fee implemented January 2010 (\$500K/yr.)**



# **Parking System: Capital Investment**

- **\$3.8M new planned debt for energy efficiency project**
  - **\$413K annual debt payment**
  - **Five-year payback per structure**
- **Migration from old in-house permit management system to T2 (\$960K)**
  - **Will enable additional self-service web applications for our customers**

# Parking Fee Plan

	<b>Current 2009-10</b>	<b>Previously Estimated July 2010</b>	<b>Currently Proposed January 2011</b>
<b>Yellow</b>	<b>\$63</b>	<b>\$67</b>	<b>\$65</b>
<b>Blue</b>	<b>\$79</b>	<b>\$84</b>	<b>\$82</b>
<b>X</b>	<b>\$115</b>	<b>\$122</b>	<b>\$120</b>
<b>Daily Fee:</b>			
<b>Main Campus</b>	<b>\$10</b>	<b>\$10</b>	<b>\$10</b>
<b>Medical Areas</b>	<b>\$11</b>	<b>\$11</b>	<b>\$11</b>

# **Questions and Answers**