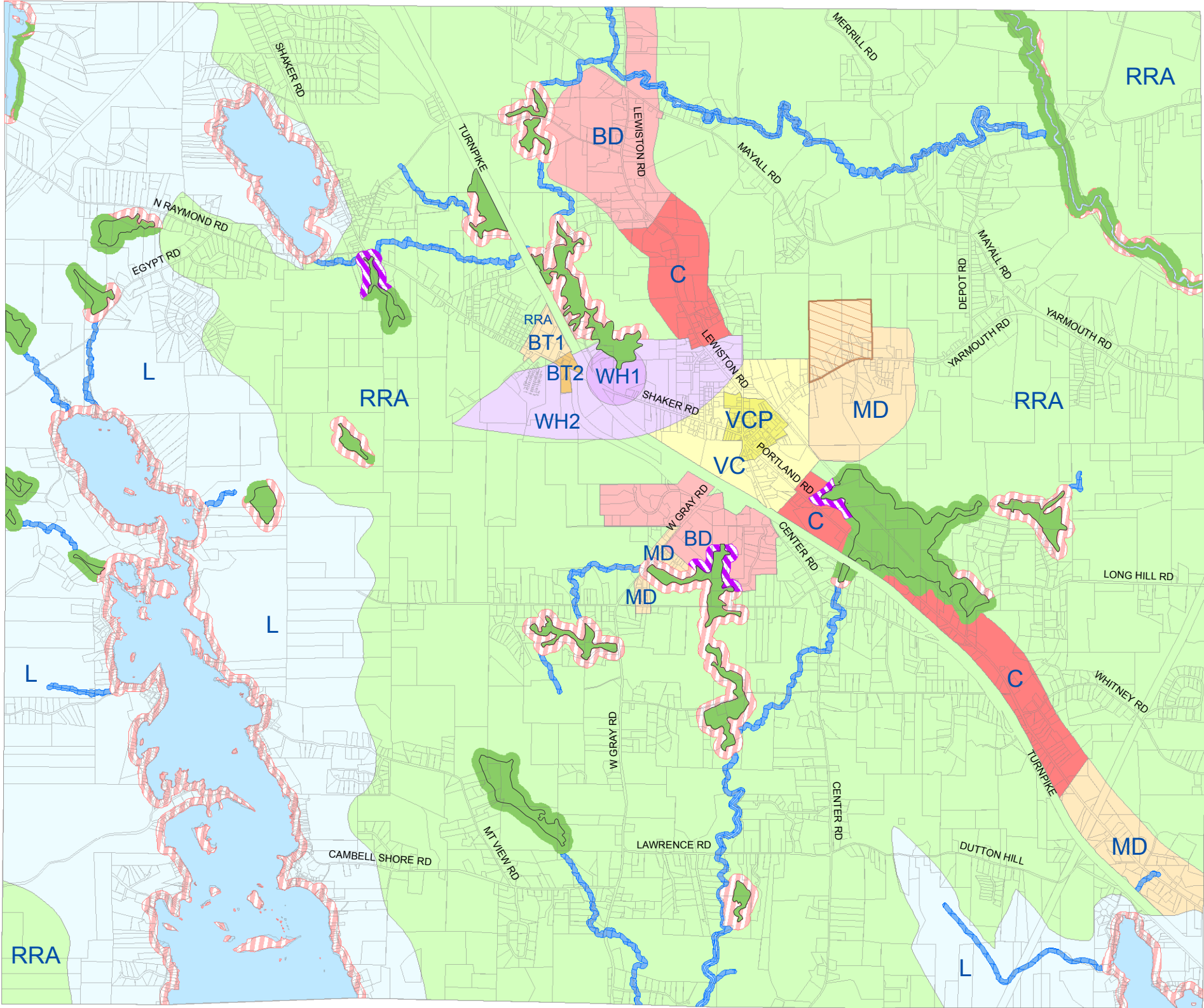


Town of Gray, Maine

Zoning Map



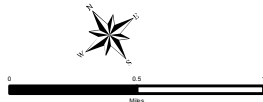
Legend

- Approximate Wetland Edge
- Tax Parcels (2008)
- Shoreland Zoning Districts**
 - Resource Protection
 - Limited Commercial
 - Limited Residential
 - Stream Protection
- Zoning Districts**
 - Business Development
 - Business Transitional 1
 - Business Transitional 2
 - Commercial
 - Lake
 - Medium Density
 - Rural Residential and Agricultural
 - Village Center
 - Village Center Proper
 - Wellhead Protection 1
 - Wellhead Protection 2
 - Medium Density District w/ Mobile Home Park
 - Water

THE DEPICTION OF THE SHORELAND ZONING DISTRICTS ON THE ZONING MAP FOR THE TOWN OF GRAY ARE MERELY ILLUSTRATIVE OF THEIR GENERAL LOCATION. THE BOUNDARIES OF THESE DISTRICTS SHALL BE DETERMINED BY MEASUREMENT OF THE DISTANCE INDICATED IN THE ORDINANCE FROM THE NORMAL HIGH WATER MARK OF THE WATER BODY OR UPLAND EDGE OF THE WETLAND VEGETATION, REGARDLESS OF THE LOCATION OF THE BOUNDARY SHOWN ON THE MAP.

Revisions:
VC & VCP Zones Effective 1/18/08
AOZ - Repealed Effective 10/16/07
BT-1 & BT-2 Zones Effective 10/16/07
Shoreland Effective 2/19/2010

Resource Protection Delineation:
USGS (slopes)
NW 1991
SCS 1974
FEMA 1985
MIF&W 2009



Map Prepared by:
Spatial Alternatives
207-846-2355
www.spatialalternatives.com
June 14, 2010