

Expatriate Living

IN MALAYSIA



Malaysian Industrial Development Authority
www.mida.gov.my



EXPATRIATE LIVING IN MALAYSIA

2007 Edition

Published by:



MIDA

Malaysian Industrial Development Authority (MIDA)

Block 4, Plaza Sentral, Jalan Stesen Sentral 5

Kuala Lumpur Sentral

50470 Kuala Lumpur, Malaysia

Tel: 603-2267 3633 Fax: 603-2274 7970

E-mail: media@mida.gov.my

Website: <http://www.mida.gov.my>

In cooperation with:



The Malaysian International Chamber of Commerce and Industry (MICCI)

Website: <http://www.micci.com>



HSBC Bank Malaysia Berhad

Website: <http://www.hsbc.com.my>

Disclaimer

No part of this book may be reproduced, stored in a retrieval system in any form by any means, including electronic, photocopying, recording or otherwise, without the prior written permission of the Malaysian Industrial Development Authority (MIDA).

MIDA has made every effort to ensure that all information is up-to-date and correct at the time of printing. We cannot take any responsibility for any incorrect information or omission published in this guidebook.

This guidebook is published by the Malaysian Industrial Development Authority in collaboration with the Malaysian International Chamber of Commerce and Industry.

For further details, visit MIDA's website: <http://www.mida.gov.my>

© MIDA – All rights reserved.

Table of

Contents

1	Living in Malaysia	01
2	Accommodation	11
3	Utilities	19
4	Transportation	27
5	Medical and Dental Facilities	39
6	Education	43
7	Banking and Insurance	47
8	Leisure and Entertainment	51
9	Shopping	61
10	Guidelines for Employment	65
11	Income Tax	71
12	Employees Provident Fund (EPF)	75
13	Malaysia - My Second Home Programme	77
14	Prohibitions	83
15	List of Appendices	84





MALAYSIA
Your Profit
Centre in Asia



1

Living in Malaysia

- **PREPARING FOR CHANGE**
- **BASIC FACTS**
- **LIVING CONDITIONS AND INFLATION**
- **URBAN COST OF LIVING**
- **LEARNING THE NATIONAL LANGUAGE**
- **IMPORTANT MALAYSIAN CUSTOMS**
- **RELIGIONS AND PLACES OF WORSHIP**
- **MAJOR FESTIVALS**
- **DRESS CODE**
- **SAFETY AND SECURITY**

PREPARING FOR CHANGE

Malaysia, having been part of the international spice route for centuries has turned into a mosaic of cultures. Peninsula Malaysia was referred to as the Golden Chersonese by the 16th century Greek astronomer and mathematician, Ptolemy in his early map of the maritime spice route between China and the Middle East. Later, the Portuguese, Dutch and British colonisation from the 16th century that resulted in the coming of Chinese, Indians and Arabs, has also left its mark as evident in the architecture, system of government and culture of the country. Living in Malaysia is a heart warming experience due to its friendly people and its world class infrastructure that makes for a convenient and comfortable stay.

While Malaysia is a very easy country to live in and adapt to, preparing for the experience is very important. Malaysian culture is different from many other cultures due to its multi-ethnic, multi-religious and multi-cultural nature and this is one of its appealing qualities that attracts foreigners to work and live in the country. Many expatriates will be surprised at just how easy it is to live in Malaysia.

A key aspect to learning to adjust to working and living in Malaysia is the ability to deal effectively with the Malaysian culture, both in terms of business and general living. Being well prepared for the cross-cultural experience allows expatriates and their families to predict likely areas of difficulty to minimise the adverse effects of cultural differences.

BASIC FACTS

Location

Malaysia is located between 2° and 7° north of the Equator. Geographically, Malaysia is as diverse as its culture. There are two parts to the country; 11 states and two Federal Territories in the peninsula of Malaysia and two states and one Federal Territory on the northern part of Borneo.

Peninsular Malaysia is separated from the states of Sabah and Sarawak by the South China Sea. Thailand is located to the north of Malaysia while to the south lies the island Republic of Singapore. Sabah and Sarawak are bordered by Indonesia while Sarawak also shares a border with Brunei Darussalam. The country has a total land area of 329, 847 square kilometers.

The country is free from major natural calamities and is not known to have experienced major disasters such as earthquakes or typhoons.

Kuala Lumpur, the nation's capital and largest city is the seat of parliament, as well as the commercial and financial capital of the country. Putrajaya is the administrative capital for the Federal Government of Malaysia.



Climate

The country is generally warm throughout the year with temperatures ranging from 25°C to 32°C in the lowlands and between 21°C to 28°C in the highlands. Malaysia has a humid tropical climate with annual rainfall averaging 250 centimetres. (100 inches).

Time

Malaysia is eight hours ahead of GMT and 16 hours ahead of US Pacific Standard Time.

People

Malaysia is a multi-racial country of some 26.9 million people of different ethnicity, with the majority comprising Malays, Chinese and Indians. Minority groups including Arabs, Cambodians, Dutch, Eurasians, Japanese, Portuguese, Thais and Vietnamese also make up the multi-ethnic structure of the population. However, in East Malaysia (in the states of Sarawak and Sabah on the island of Borneo) there are some 29 ethnic groups including the majority groups of Dayaks (Sarawak) and Kadazans (Sabah). *For more information, log on www.tourism.gov.my*

Government

Malaysia practices parliamentary democracy with a constitutional monarchy. The King of Malaysia, is commonly referred to as the *Yang Di-Pertuan Agong*. The 13 states are headed either by Rulers or *Sultans* in the nine Malay states and Governors in the other four states. The *Yang di-Pertuan Agong* is selected for a five year term among the nine *Sultans*.

The system of government is based on the United Kingdom model, whereby the Executive branch is headed by the Prime Minister. Parliamentary elections are held every five years.

Economy

Malaysia has a stable and fast-growing economy with a Gross Domestic Product (GDP) growth of 5.9 per cent and a GDP per capita of US\$5,239 for the year 2006. Manufactured goods, especially electrical and electronic



products, are the major contributors to the nation's GDP. Other significant contributors to the economy are from tourism and commodities (palm oil, timber, pepper, rubber and petroleum).

The Industrial Master Plan (IMP3), 2006-2020, launched in mid 2006, outlines the industrial strategies and policies which form part of the country's continuing efforts towards realising Malaysia's objective of becoming a fully developed nation, as stated in Vision 2020. The Malaysian economy is targeted to grow at 6.3 per cent during the entire IMP3 period.

Currency

The Malaysian currency is referred to as Ringgit or RM and is divided into 100 sen. Denominations in circulation are RM1, RM2, RM5, RM10, RM50 and RM100 notes. Coins are issued in one, five, 10, 20 and 50 sen pieces. Major currencies can be exchanged for Ringgit at banks, authorised moneychangers and major hotels. Under the managed float system, the Ringgit exchange rate is largely determined by the demand for and the supply of Ringgit in the foreign exchange market. The exchange rate for one USD is around RM3.5 to RM3.6 (January 2007). It is necessary to exchange the Ringgit to other currencies when travelling outside Malaysia. Major credit cards are accepted in most banks, major hotels, medical centres, airlines, petrol stations, restaurants and retail establishments.

Working Days

All states (with the exception of Kedah, Kelantan and Terengganu) observe Saturdays and Sundays as weekly rest days. Most organisations in the private sector and Government departments in Kedah, Kelantan and Terengganu, observe Fridays and Saturdays as weekly rest days.

LIVING CONDITIONS AND INFLATION

Economic stability and social harmony are the prime concerns of the Government. Malaysia has achieved an admirable record of maintaining political and economic stability and is considered as a safe country to live and work in. Living standards have improved greatly over the past decade and many Malaysians now have access to services and facilities similar to those in developed countries. Inflation was maintained at a healthy rate of 3.8 per cent for 2006. Out of 71 cities surveyed by the UBS Bank of Switzerland, the capital city of Kuala Lumpur was ranked the top budget-friendly city in the world.

Malaysia is free of most contagious diseases. Expatriates need special vaccination only if coming from an endemic area. It is advisable to check on health regulations with the nearest Malaysian diplomatic mission before entering the country.

URBAN COST OF LIVING

The cost of living in Malaysia is relatively inexpensive when compared to many other countries in the world. *For an indication on cost of living relevant to expatriates, refer to Appendix 1.*

LEARNING THE NATIONAL LANGUAGE

Bahasa Malaysia is the national language and English, Mandarin and Tamil are widely spoken. It is relatively easy for foreigners to communicate with Malaysians as most have a reasonable command of English. Expatriates taking the initiative to learn at least a few words of the national language will always bring a smile to the locals. There are institutions in Malaysia offering classes for new arrivals to learn *Bahasa Malaysia*. *For a listing on language institutions, refer to Appendix 2 and Appendix 23.*



Picture courtesy by Tourism Malaysia (www.tourismmalaysia.gov.my)

IMPORTANT MALAYSIAN CUSTOMS

Knowledge of local customs is important in any culture. There are many different practices found within the various cultures of Malaysia. Identifying and acknowledging the differences within any group of Malaysians is very important for expatriates living and working in the country. Some practices pertaining to specific ethnic groups have now been adopted by all Malaysians.

Handshaking is the normal form of greeting amongst men and women. In the case of Muslim women, it would be prudent to reciprocate only when they extend their hand. Handshaking amongst men is also not as firm as in many western cultures and Muslims will also touch their heart after shaking hands. The traditional Malay greeting or *salam* resembles a handshake without the grasp, but with both hands outstretched. The approach is to lightly touch the other person's hands, and then bring both hands back to the chest to mean, "I greet you from my heart." One can reciprocate the *salam* (greeting) if they so desire.

It is more appropriate to point with the thumb of the right hand rather than point with one finger. The more accepted method involves waving all the fingers on one hand with the palm facing down.

Excessive displays of affection in public are considered inappropriate in Malaysia. Care should also be taken when offering drinks and food as well as the manner in which they are offered. It is appropriate to use the right hand only as the left hand, for many, is meant for personal hygiene. Muslims only consume *halal* food and are forbidden to eat pork and drink alcohol. Devout Hindus and Buddhists abstain from beef and some of them are vegetarians.

Malaysians are friendly by nature and possess a high level of tolerance due to the multi-racial and multi-cultural environment in the country. Malaysians are also very hospitable and will usually offer food and drinks to all visitors. Footwear must be removed when visiting many places of worship and in most Malaysian homes. *For more insight into Malaysian customs, log on to www.tourism.gov.my*

RELIGIONS AND PLACES OF WORSHIP

Malaysia is a multi-religious society although Islam is the official religion but freedom of worship is guaranteed under the constitution. All Malays are Muslims by birth; most Chinese can either be Taoist, Buddhist, or Christian. Majority of the Indians are Hindus, Buddhists, Muslims, Sikhs or Christians. Most Europeans and Eurasians in the country are predominantly Christians.

MAJOR FESTIVALS

Malaysians celebrate a variety of colourful festivals. Major Muslim festivals are *Hari Raya Aidilfitri* which marks the end of *Ramadhan*, and *Hari Raya Aidiladha*. During *Ramadhan* or the fasting month, Muslims do not consume food or drinks from daybreak until sunset. The Chinese community celebrates



Picture courtesy by Tourism Malaysia (www.tourismmalaysia.gov.my)



Picture courtesy by Tourism Malaysia (www.tourismmalaysia.gov.my)

various festivals such as the Lunar New Year, *Chap Goh Meh* and Mid-Autumn Festival. Hindu celebrations include *Deepavali*, *Thaipusam* and *Ponggal* (harvest festival). The people of Sabah and Sarawak celebrate harvest festivals known as *Ka'amatan* in Sabah and *Gawai* in Sarawak. Christians all over the country observe Easter and Christmas.

Most Malaysians join in the festivities of others. The concept of “open house” is common to all Malaysian festivals. During an open house, whoever is celebrating the festival organises a function and invites relatives, friends and neighbours over. Everyone gets to join in and enjoy the many traditional dishes prepared for the occasion and partake in the celebration. The King and top political leaders host open houses to the public during *Hari Raya Aidilfitri* and all are welcome. Similar open houses are hosted by State heads throughout the country. National level open houses are hosted by the Government to celebrate major festivals. *For more information on Malaysian festivals, log on to www.tourism.gov.my*

DRESS CODE

Most Malaysians have adopted contemporary clothing that is similar to many other countries but there are some unique aspects of Malaysian traditional attire that will be encountered.

Appropriate attire is required for religious places, formal gatherings and most government functions or business meetings. For men, the dress code for business is similar to western attire and commonly comprises long trousers,

long-sleeved shirt and a tie. Suits are worn during presentations, formal meetings and many social functions held during luncheon or in the evenings. Colourful *batik* (Malaysia's traditional textile) shirts are an acceptable dress code often worn by men for formal and evening events.

Women in the workplace wear appropriate attire such as skirts and blouses, pant suits or respective traditional dresses. *Batik* attire is considered suitable and fashionable for all occasions. Attire, especially at the beaches and swimming pools should be modest.



SAFETY AND SECURITY

Robberies, break-ins and snatch thefts do occur in Malaysia and it is advisable to take precautionary measures. Most up-market residential areas, including apartments, condominiums and gated communities have in-house security and visitors are monitored. Such properties in prestigious suburbs have special private security firms hired by the residential committee to patrol the area day and night. *For a listing on security companies, refer to Appendix 3.*



2

Accommodation

- **REAL ESTATE AGENCIES**
- **RENTAL TERMS AND CONDITIONS**
- **PROPERTY OWNERSHIP FOR NON-RESIDENTS**
- **ACCOMMODATION COSTS**
- **SERVICED APARTMENTS**
- **HOTEL ACCOMMODATION**
- **OFFICE RENTALS**
- **PACKERS AND MOVERS**
- **FURNITURE RENTAL**
- **PEST CONTROL SERVICES**

Unless permanent accommodation has been arranged in advance, expatriates arriving in the country tend to stay either in hotels or serviced apartments. Those who require long term accommodations may rent houses or opt to live in condominiums, especially in larger cities. Most condominiums provide security and complete amenities, such as pools, squash and tennis courts, fitness centres, convenience stores and in some cases, restaurants.

In choosing a place to live, consideration needs to be given to the travelling distance to the work place as traffic can be a problem during peak hours. For those who are dependent on public transport including taxis, access to these services is another important consideration. Families with school-aged children might consider residing in the vicinity of the children's school. Proximity to the nearest shopping malls, restaurants and entertainment outlets is another important location factor.

Most of the major international insurance companies will insure expatriates and their belongings against most risks. Insurance can also be taken out locally with international or local insurance companies. Relocating is an especially important period and it is desirable to have insurance coverage against any damage that may occur while relocating. *For a listing on insurance companies, refer to Appendix 15.*



REAL ESTATE AGENCIES

Real estate agencies are available throughout the country to assist in the rental, purchase and sale of properties. Prior to departure, it is advisable for expatriates to request their own agencies to check with Malaysian real estate agencies pertaining to all property matters. *For a listing on real estate agencies, refer to Appendix 4.*

RENTAL TERMS AND CONDITIONS

It is always easy to find accommodation through using a reputable agency that will match requirements and budgets. Tenants are required to conclude a Tenancy Agreement and pay the balance of the deposit within seven days of deciding upon a property. This includes at least two months rental as a security deposit that is refundable at the end of the tenancy agreement. Tenants will also be required to pay a deposit for the utilities. Stamp duty is usually paid by the tenant and the agent's fees are paid by the landlord or owner.

Most tenancy agreements in Malaysia are based upon similar international property agreements. Expatriates should ensure that the agreement clarifies who pays for minor repairs, normal wear and tear, touch-up or repainting in case the need arises.

Most leases have what is often called a "special clause" which allows expatriates to terminate the lease early if they are transferred out of the country, or if their work permit is terminated for any reason. If this is not

included in the lease, it is a good idea to insist that it be inserted. This may require the tenant to give a specific time frame in writing of their intention to cancel the lease.

PROPERTY OWNERSHIP FOR NON-RESIDENTS

Malaysia has an effective legal system and adequate legislation to protect private property. Foreigners are permitted to purchase and secure mortgages from financial institutions for purchasing property and real estate in Malaysia. Any purchase of property by foreigners requires the approval of the Foreign Investment Committee (FIC) regardless of the value. However, with effect from 21 December 2006, the Government has relaxed the guidelines and foreigners are allowed to purchase residential units valued at RM250,000 and above and they do not need to obtain any approval from FIC for such purchases.

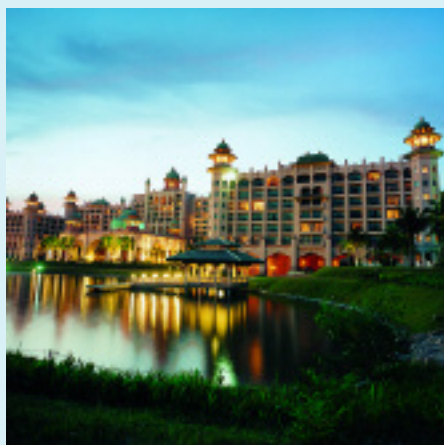
*For more details, contact:
Economic Planning Unit
Prime Minister's Department
Block B5 and B6
Federal Government Administrative Centre
62502 Putrajaya, Malaysia
Tel: 03 8888 3333 or log on to www.epu.jpm.my*

ACCOMMODATION COSTS

Just as in other leading cities in the world, accommodation costs vary throughout Kuala Lumpur, and other major cities and the rest of Malaysia. Access to services and facilities is all-important and generally speaking, the better the location and access to services and facilities, the higher the accommodation costs. Most expatriates will choose such locations and therefore their cost of accommodation will be higher. *For a listing on choice locations, refer to Appendix 5.*

SERVICED APARTMENTS

There is a variety of serviced accommodation in a few major cities in the country offering discounted rates for prolonged stays. Prices vary from RM7,000 to RM11,000 per month with facilities provided like housekeeping and maintenance, fully furnished, or semi furnished, 24-hour satellite television and security services. Other facilities like swimming pool,



clubhouse and restaurant, gym, tennis and squash court, barbecue area, car rental and city tour service, meeting rooms, and broadband internet access are also provided. *For a listing of serviced apartments, refer to Appendix 6.*

HOTEL ACCOMMODATION

Malaysia has many hotels catering to all budgets and their rates are considered some of the cheapest in the world. *For rates, refer to Appendix 7.* Facilities in major hotels include air-conditioning, swimming pools, business centres, recreation and leisure activities and restaurants where both *table d'hote* and *à la carte* meals are served. Breakfast is included in the tariff charged by most hotels. Health spas and wellness treatments using a variety of techniques are offered by many hotels and resorts. There is also an increasing number of spas located in major towns offering similar services.

There is currently a government tax of 5% and a 10% service charge (in lieu of tipping), which are both added to hotel bills. Corporate discounts of 20% to 40% for room rates are not uncommon. Rates are generally lower outside Kuala Lumpur but for hotels belonging to major international groups like Hilton and Sheraton, the prices are similar to those charged in Kuala Lumpur. Long term leases with negotiated rates are possible. *For a listing of hotels, refer to Appendix 7.*

OFFICE RENTALS

Information on rental of office space can be found in all major newspapers or from real estate agencies. Serviced offices are also available for those who do not need full offices and can operate using shared services. Most of these shared offices provide unlimited broadband usage, professional secretarial support and are fully furnished. They also offer services like access to boardrooms and meeting rooms, professional telephone answering services and the use of a prestigious corporate business address. *For a listing of office rentals, refer to Appendix 8.*



PACKERS AND MOVERS

There are several reliable companies involved in packing and moving personal household goods. Some operate locally while others are recognised international movers or their affiliates. It is important when securing the services of a mover to consider their size, reputation and international coverage. *For a listing on packers and movers, refer to Appendix 9.*

FURNITURE RENTAL

Most apartments, condominiums and houses are rented as fully equipped or semi-furnished. Rented property for expatriates is mostly furnished and furniture rental has become less popular as the purchase of new furniture is quite inexpensive. However, leasing of furniture is available at some stores selling new furniture.

PEST CONTROL SERVICES

Household pests can be common in Malaysia as they are in other parts of the world. People living in Malaysia need to be constantly aware of mosquitoes. Dengue fever and malaria are spread by certain types of mosquitoes and even the most exclusive neighbourhoods can be affected at times. As mosquitoes breed in pools of stagnant water, occupants are advised to keep their environment clean. In an effort to reduce mosquitoes, various authorities conduct regular fogging of properties. The practice of insecticide spraying, as approved by the World Health Organisation (WHO), is one of the effective means of controlling the breeding of mosquitoes.

Other pests that could be encountered include termites, rodents and monkeys. Pest control services can be found in all large urban areas. The local councils, Wildlife Department and Fire Services Department have become quite adept at removing such animals. *For a listing of pest control companies, refer to Appendix 10.*





3

Utilities

- **ELECTRICITY RATES**
- **HOUSEHOLD GAS RATES**
- **WATER, SEWERAGE AND GARBAGE**
- **POSTAL AND COURIER SERVICES**
- **TELEPHONE AND MOBILE SERVICES**
- **INTERNET SERVICES**
- **RADIO AND TELEVISION**

Utilities (water, electricity, sewerage and garbage) for houses in Malaysia are comprehensive and effective as well as being cheap when compared to most countries. They are usually charged separately from the rent. On the other hand, service or maintenance charges for apartments and condominiums are usually paid by the landlord and therefore included in the rent.

Malaysia has a very efficient postal service that provides services to even remote villages throughout the country. The postal service is provided by Pos Malaysia, a government owned entity. There are several local and international companies providing courier services to complement the services provided by Pos Malaysia.

ELECTRICITY RATES

Electricity can be a major expense depending upon household usage. In Peninsular Malaysia, electricity is provided by Tenaga Nasional Berhad (TNB). Domestic electricity supply is 220-240 Volts A/C, 50 hertz and is



available 24-hour a day throughout the country and the supply is reliable. Plug fittings are usually of the square, three-pin or round variety and lamp fittings can be either bayonet or screw type.

The rates in Peninsular Malaysia are 21.8 sen per unit for the first 200 units per month, 28.9 sen for the next 800 per units, and 31.2 sen for over 1000 additional units. The minimum monthly charge is RM3.00. *For more information, log on to www.tnb.com.my or call the 24-hour service line, Tel:1-5454.*

In Sarawak, electricity is supplied by the Sarawak Electricity Supply Corporation. The domestic rates are 34 sen for the first 100 units per month, 29 sen for the next 300 units and 33 sen for each additional unit. The minimum monthly charge is RM5.00. *For more information, log on to www.sesco.com.my*

In Sabah, electricity is supplied by the Sabah Electricity Board. Domestic rates are 24 sen for first 40 kwh per month, 60 sen for the next 41–200 kwh and 26 sen for 201 kwh and above. The minimum monthly charge is RM5.00. *For more information, log on to www.sesb.com.my*

HOUSEHOLD GAS RATES

Town or piped gas is available in certain urban areas. In many other Malaysian households, bottled gas for cooking is available in cylinders and delivered directly to the home by local agents. A full cylinder costs RM75 and replacement gas alone costs RM25. *For more information on town gas, contact Gas Malaysia Sdn. Bhd. Tel: 03 9206 7800.*

WATER, SEWERAGE AND GARBAGE

In Malaysia, state governments are responsible for the supply of water. All states offer a reliable water supply and water is treated to WHO standards. However, many people use household filters to improve the quality of water. Water rates vary from state to state and range from 40 *sen* for the first 20,000 m³ in Kedah to 90 *sen* per m³ in Sabah.

Sewerage services have been privatised and are operated separately from the water supply. Indah Water Konsortium Sdn. Bhd. is responsible for these services. *For more information, contact Tel: 1 800 88 3495 or log on to www.iwk.com.my*

Garbage collection and disposal are the responsibility of the municipality, town council or City Hall. These services are covered in the assessment rates charged by these authorities and borne by the house owners. There is no separate charge for garbage collection. Garbage is collected in most urban areas three times a week while most condominiums and apartments have a daily service.

Alam Flora Sdn. Bhd. is the privatised solid waste management company for Central and Eastern regions of the country, covering the states of Selangor, Pahang, Terengganu, Kelantan, Federal Territory of Kuala Lumpur and the Federal Territory of Putrajaya. *For more information, log on to www.alamflora.com.my*

Recycling is encouraged and various facilities including specific bins for different type of waste material and collection centres are available in the major towns and cities.

POSTAL AND COURIER SERVICES

Postal services are efficient as Malaysia has an extensive national postal system, operated by Pos Malaysia. Services are cheap by international standards and post offices can be found all over Kuala Lumpur and other cities, as well as in many smaller towns. Some city branches operate during weekends and as late as 10 pm Monday to Saturday. They handle all postage requirements as well as operate a one-stop centre for bill payment for many services and utilities. Premium services known as “Ekspres Mail Service” (EMS), operated by Poslaju Malaysia provide speedy courier delivery throughout the country. Other services include remittance services (money and postal orders), telegraphic money orders and trade charge money orders. *For more details on these services and charges, contact Tel: 1-300-300-300 or log on to www.pos.com.my*



Malaysia has many private international courier services that deliver to an extensive national and international network. While their charges are more expensive than those offered by Pos Malaysia, this can be another option for overseas deliveries. Among the most extensively used services are those of: ABX Express, City Link Express, DHL Worldwide Express, FEDEX Express Services, GD Express, OCS, Poslaju, Nationwide, TNT and UPS. *For a listing of courier services, refer to Appendix 11.*

TELEPHONE AND MOBILE PHONES

The national telephone network is operated by Telekom Malaysia (TM), which has an extensively upgraded infrastructure network with the latest technology, and offers various types of telecommunication services. Public pay telephones are widely available and most models accept 10, 20, or 50 *sen* coins, Telekom cards (*Kadfon and Unicard*) or credit cards as mode of payment.

For personal usage, it takes a minimum of seven working days to install telephones in established housing areas. Foreigners have to pay a deposit of RM1,000 for each fixed telephone line. Subscribers in the major cities and towns in Peninsular Malaysia are supplied with Sub-trunk dialling (STD) facilities. STD calls are charged on a unit basis, depending on the length of conversation, time of day and distance. Billing is online and statements are fully documented, detailing the number called, time, duration and charge. Telephone rates can be obtained from telephone directories or by calling 1050. *For further information on TM services throughout Malaysia, log on to www.telekom.com.my*

Mobile and cellular phone usage is widespread throughout the country. GSM 900 and 1800 networks cover practically the whole country, and 3G services are currently available in selected urban areas. Expatriates have to pay a deposit of up to RM1,300 for using mobile phones in the country.

For more details on network operators, log on to:

Celcom : www.celcom.com.my

DiGi : www.digi.com.my

Maxis : www.maxis.com.my

Time dotCom : www.time.com.my

INTERNET SERVICES

Malaysia's Internet coverage is growing rapidly. Wireless Access Point (WAP) technology is becoming widespread and WiFi connection is now available in many cafes and restaurants in larger cities.

Major Internet Service Providers (ISPs) are TM Net (Telekom Malaysia), JARING (MIMOS Bhd), DiGi Net (DiGi Telecommunications Sdn Bhd) TimeNet (TTdotcom Sdn Bhd) and Maxis Broadband Sdn Bhd.



The services provided include:

Internet Services – Dial up (PSTN/ISDN)

Dedicated access

Broadband Services

Data Centre Services

Virtual Private Network (VPN)

Satellite Services.

Voice over Internet Protocol (VoIP)

VoIP service via fixed line, mobile or PC is available. The main service providers of VoIP are TM Net Sdn Bhd., Jaring, Time dotcom and NasionCom.

For more details log on to:

JARING	: www.jaring.com.my
Telekom Malaysia	: www.telekom.my
TM Net	: www.tm.net.my
TimeNet	: www.time.com.my

RADIO AND TELEVISION

Radio and television services are provided by the national network, Radio-Television Malaysia (RTM), and cover almost the whole country. Programmes are telecast in several languages with the main ones being the National Language, Mandarin, English, and Tamil. In addition, there are several privatised radio stations, including Hitz FM, ERA, Fly FM, Light and Easy, and THR Raaga, and TV stations such as, TV3, NTV7 and 8TV as well as subscription based satellite television channels which provide services to specific urban areas.

Astro is the pioneer satellite television provider that offers several different entertainment, news, information and sports packages. Subscription fees for Astro ranges from RM60.00 to RM105.00 per month depending upon the package taken. Channels include: CNN, BBC, CNBC, HBO, Discovery, National Geographic, Star Sports, ESPN, AL Jazeera, Animal Planet, Vaanavil, Sun TV, Wah Lai Toi, TVBS Asia, Phoenix, CCTV and many more. MITV's popular programmes include, MACTV, CCTV4, ArirangTV, Channel NewsAsia and CCTV9.

For more details, log on to www.rtm.net.my, www.astro.com.my and www.mitv.com.my





4 Transportation

- **INTERNATIONAL TRAVEL**
- **DOMESTIC TRAVEL**
- **INNER CITY TRANSPORT**
- **CAR RENTAL AND LEASING**
- **DRIVING IN MALAYSIA**
- **PETROL AND DIESEL**
- **TOLL CHARGES**
- **BUYING A CAR**
- **CAR FINANCING**
- **CAR EXPENSES**
- **EMERGENCY AND BREAKDOWN SERVICES**

Malaysia has a comprehensive transportation network with connections to the world, within the country and to its neighbours. Most foreigners arrive by air through Kuala Lumpur International Airport (KLIA). KLIA was voted third in Best Airports Worldwide for the Best in Travel Poll 2006, a survey by SmartTravelAsia.Com, the region's only dedicated online travel magazine. KLIA was voted Best Airport in the 15 to 25 million passengers per annum category and also bagged third place for both Best Airport Worldwide and Best Airport in Asia/Pacific categories in the AETRA 2005 results.

There is also a good railway network throughout Peninsular Malaysia operated by Keretapi Tanah Melayu (KTM) with international connections to Thailand and Singapore. Road transportation is facilitated via a good network of expressways, highways and trunk roads. Express coaches and buses as well as long-distance taxis take passengers to most parts of the country. Most large cities have efficient and affordable public and private transportation services.

KL Sentral is Kuala Lumpur's largest transit hub offering transport connectivity for the Monorail, Light Rail Transit, train, taxi and bus services.



Picture courtesy by Malaysia Airline System Berhad



Picture courtesy by AirAsia

INTERNATIONAL TRAVEL

Air

Malaysia has well-developed and efficient air travel links to the rest of the world. Most inbound travellers arrive in Malaysia on scheduled flights at one of its five international airports: KLIA, Kota Kinabalu, Kuching, Langkawi and Penang. KLIA is the nation's leading aviation hub for international and domestic flights.

Malaysia Airlines (MAS) is the country's national carrier and flies inbound and outbound to over 100 international destinations. Air Asia, a Malaysian budget domestic and regional airline which has Kuala Lumpur as its hub, operates flights to South East Asia and China. Air Asia's subsidiary, Air Asia X, will be commencing international services to selected destinations with effect from July 2007.

Almost 50 other international carriers fly into KLIA and to the rest of the world. Inquiries and bookings for all ticket reservations can be made through travel agencies directly at any airline ticketing office, or electronically via the web. *For a listing of airline companies, refer to Appendix 12.*

Air Transfers

Taxis and buses also operate between main cities and airports. While city taxis can transfer passengers to the airport, they are not allowed to carry passengers back to the city. A pre-paid airport limousine service is available at both budget and premium rates from the airport. Prices are competitively

fixed for various destinations. A pre-paid bus service operates from the airport to a city terminal on Jalan Duta, in Kuala Lumpur and public buses also ply the route.

KLIA Ekspres

KLIA Ekspres is a non-stop 28-minute train service provided by the Ekspres Rail Link Sdn. Bhd. (ERL Sdn Bhd) that connects the airport to the KL City Air Terminal at the KL Sentral Station in Kuala Lumpur. The ticket costs RM35.00 one way and can be purchased at KLIA and at KL Sentral. It also offers flight and baggage check-in services for passengers using certain airlines enroute to KLIA such as MAS, Cathay Pacific Airlines and Royal Brunei Airlines. *For more information, log on to www.klia.com.my or www.kliaekspres.com*

LCCT

LCCT is the newly established Low Cost Carrier Terminal situated 20 kilometers from KLIA providing services to passengers of the budget airline, Air Asia to domestic and regional destinations. A relatively new service, the SkyBus provides a shuttle service to and fro from KL Sentral to the LCCT. The journey between KL Sentral and LCCT takes around 1 hour 15 minutes. The cost for a one way ride is RM9.00 and tickets can be purchased online, on board Air Asia flights or on board the SkyBus itself.

Sea

Various seaports around the country have customs and immigration facilities to enable passengers to travel between Malaysia and the neighbouring countries like Brunei Darussalam, Indonesia, Philippines, Singapore and Thailand. Expatriates can also easily travel via the reliable and affordable ferry services. Cruise liners have extensive docking facilities at Kijal (Terengganu), Kota Kinabalu, Langkawi, Penang and Port Klang.

Rail

Reliable and comfortable rail transportation is available in Peninsular Malaysia with several international border crossings into neighbouring Singapore and Thailand. International trains operate from Kuala Lumpur to Singapore and Thailand (via both Padang Besar in Perlis or Hat Yai in



Thailand, and Tumpat in Kelantan for destinations to south-eastern Thailand). First and second class air-conditioned coaches are available with sleeping berths for overnight trips. The cost for a one way ride to Singapore by first class is RM78.00 and to Thailand by second class RM57.00. For more information, contact KTM Tel: 03 2267 1200 or log on to www.ktmb.com.my

Road

There are several road crossings from the north of the Peninsula into Thailand and two bridge crossings south of Johor Bahru into Singapore. The North-South Highway also links Johor Bahru in the south, to Singapore and Bukit Kayu Hitam in the north, to Thailand. Non-stop travel between the two points takes about eight hours. It is possible to easily access into all three countries with the appropriate documentation. *For more information, log on to www.ilmnet.gov.my*

DOMESTIC TRAVEL

Air

MAS and Air Asia operate most of the domestic flights in Peninsular and East Malaysia from the five international airports, 14 domestic airports, several small islands and a series of small rural airports that connect remote villages in the interior to larger towns and cities. Private carrier, Berjaya Air flies to several tourist island resorts in the country.

Sea

Scheduled and charter ferry services operate to many of the islands scattered around the country. In some cases, they are the only means of accessing these islands. Popular island resorts in Malaysia are Penang, Langkawi, Pangkor, Tioman, Redang, Pulau Perhentian, Pulau Besar and Labuan.

Cruise ships ply between the major port of Port Klang to destinations in Thailand and Singapore as well as provide overnight cruises to the island of Penang. For information on ferry operators and cruise ships, log on to www.tourism.gov.my

Rail

Keretapi Tanah Melayu (KTM) operates a reliable domestic train service at affordable prices. The main north-south rail line passes through major cities and towns such as Johor Bahru, Kuala Lumpur, Ipoh, Arau and Padang Besar. The East Coast service branches from the main line at Gemas in Negeri Sembilan and terminates at Tumpat in Kelantan.



Road

Most places in Peninsular Malaysia are accessible via the North-South Highway, East-Coast Highway and the Kuala Lumpur-Kuantan Highway which link up coastal roads and the rest of the road systems in the country. There are also other highways connecting towns and villages throughout the country. There is also a network of highways and roads connecting the major towns in Sabah and Sarawak.

Reliable bus services are available and operate between Kuala Lumpur and all major cities and towns in Peninsular Malaysia as well as to Singapore and Thailand. Buses travelling between major cities and towns are air-conditioned. Some of these coaches are designated as business class or executive coaches and offer a higher level of service and comfort. There are also similar services operating in East Malaysia.

More information on bus terminal and ticketing can be obtained from bus stations located in various parts of Kuala Lumpur like Puduraya Bus Station, Putra Pekeliling Bus Station (*Hentian Putra Pekeliling*), Duta Bus Station (*Hentian Duta*) and Old Town Petaling Jaya. Similar bus terminals are located in the major cities or towns in others part of the country. The main bus operators in Peninsular Malaysia are Plusliner and Ekspres Nasional.

Malaysia also has a network of taxis that offer services to major cities and towns operating from most bus stations to offer passengers and quicker alternative to their destinations.

INNER CITY TRANSPORT

Public transport offers regular and economical method of getting around urban areas especially Kuala Lumpur. KTM operates a commuter rail system to various parts of the city (KL to Kajang, Seremban to Rawang and Sentul to Port Klang). There are three inner city light rail networks including Star Light Rail Transit (STAR), Putra Light Rail Transit (Putra) and KL Monorail with designated interchange points for transfer between the various systems. A 'park and ride' system and feeder bus services are available for users of the commuter rail system and the light rail networks at various stations.

These services operate between the hours of 6 a.m. and 12 midnight and are extended during major festivities. Information brochures are available at train stations.

Pre-paid cards and monthly passes at discounted rates are available to regular users of Rapid KL, Komuter, STAR and PUTRA. In addition, these



modes of transport also offer tickets at discounted rates that allow passengers to travel as many routes as they want in a day.

Regular and scheduled buses operate along all main routes in the big cities and towns. Rapid KL which operates in Kuala Lumpur also links up with the various other modes of inner city transport besides offering the normal bus services in the city.

Taxi charges are relatively cheaper as compared to other major cities. A flag fall system is used and set meter rates are applicable for distance travelled. Additional charges are levied on excess luggage and additional passengers. For passengers travelling between 12 midnight and 6 am, there is a levy of 50% surcharge on top of the meter rates. Passengers also have to pay any road tolls incurred by taxis while using toll roads. These are clearly outlined when making a telephone taxi booking. Tipping is not required except for exceptional service and taxis can be hailed on the streets or from taxi stands.

Budget and Premium taxis are available especially in major hotels and from KLIA and KL Sentral. *For a listing on taxi operators, refer to Appendix 12.*

CAR RENTAL AND LEASING

Several car hire companies offer cars for rent on a daily or longer-term basis. Prices range from RM250.00 to RM 450.00 per day, depending on the make of the car and get progressively cheaper with longer rentals. Online worldwide booking and reservation services are provided by some companies. *Refer to Appendix 13 for a listing on car rental companies.*



DRIVING IN MALAYSIA

Driving in a new country is never easy but most expatriates will find Malaysian traffic manageable. Many people in Malaysia own cars and urban peak-hour traffic and abundant motorcyclists add a new dimension for many new motorists. Vehicles are driven on the left-hand side of the road and the road rules are based on the United Kingdom's system.

Road signs in Malaysia follow international protocol, and are mostly in *Bahasa Malaysia*. Some are in English with graphics. A common word from in *Bahasa Malaysia* is *jalan*, which means street or road. Refer to Appendix 23 for a listing of common road terms.

A valid driving licence or international driving licence is mandatory for driving in Malaysia. Malaysian driving licences must be renewed annually or up to a maximum of five years and are issued by the Road Transport Department or *Jabatan Pengangkutan Jalan (JPJ)* that takes into consideration the motorist's past driving record and any outstanding traffic summons.

To apply for a local driving licence to supplement an existing foreign one, motorists need to apply at the JPJ office with their existing driving licence, passport (plus photocopy), two photos and current work permit. The main office in the Klang Valley is:

*Ministry of Transport
Road Transport Department
Driving Licence Division
Level 3, Block D 4 Parcel D
Precinct 1, Putrajaya
Malaysia*

For more information, contact Tel: 03 8886 6000, or log on to www.mot.gov.my

PETROL AND DIESEL

Petrol and diesel are sold in Malaysia by the litre and mostly through self-service petrol stations owned by the local petroleum company, PETRONAS, or leading international oil companies like Shell, BHP, Esso, Caltex and Mobil. Credit cards are accepted at all major stations. Diesel and petrol prices are fixed nationally with the current price of unleaded petrol at RM1.92 per litre for super (RON 97) and RM1.88 for regular (RON 92). The price of diesel at the pump is RM1.581 per litre. Petrol and diesel prices are currently cheaper compared to many developed and neighbouring countries.



Picture courtesy by Proton



TOLL CHARGES

Many expressways and highways in Malaysia are privatised and users are required to pay toll charges. Other highways, trunk roads and local roads are free. Toll charges vary but are mostly levied according to the distance travelled. Charges vary for private cars, taxis, buses and trucks and a car journey of 200 km costs approximately RM120. Motorists can pay toll charges at the end of each journey or use the *Touch n Go* prepaid electronic card.

The toll highways of various operators criss-cross the nation and the prepaid card can be used interchangeably on all toll ways. The card can be reloaded at some tollgates, toll operator offices, some petrol stations and bank's ATM machines. The *Touch n Go* card can also be used in an increasing number of parking lots and public transport systems in Kuala Lumpur.

BUYING A CAR

Cars are the most convenient mode of transport in Malaysia and buying a new or second-hand car is relatively easy. Approval Permits (AP) issued by the Ministry of International Trade and Industry (MITI), are required for the importation of cars. For more details, contact MITI at Tel: 03 6203 3022 or log on to www.miti.gov.my

Locally manufactured Malaysian national cars (Proton and Perodua) are generally cheaper than imported ones. Several models of foreign-assembled or imported cars are also available in Malaysia. The prices of national cars range from RM63,000 to RM68,000 for a 1.6 cc model. In the case of imported

cars a Mercedes Benz 230 costs around RM380,000 and a BMW 5.2 Series costs around RM340,000. The Automobile Association of Malaysia (AAM) is a good source of information for car buyers. *For more details, contact the AAM at Tel: 03 2162 5777, or log on to www.autoworld.com.my/aam*

CAR FINANCING

Loans for new cars are provided by most financial institutions for a period of five to seven years and interest rates are quite competitive. Generally, loans are not available for cars older than ten years, unless they are vintage cars. The resale value of cars is an important factor to be considered when buying a car. Second-hand car dealers can assist prospective buyers in obtaining a loan from registered finance companies and AAM can also assist in providing information on the value of both new and used cars.

CAR EXPENSES

The expense of operating a car depends on the model, engine capacity, age and fuel consumption. On average, for a Malaysian-made national car, owners need to pay about RM300–RM600 for a normal service, which includes mechanic's charges and replacement parts.

Road tax renewal has to be done annually and depends on the car's engine capacity but is approximately RM200 per year for a 1.6 litre car. Road tax for privately owned diesel vehicles are 400% higher than petrol-driven vehicles.

All cars need to be insured with third party coverage being the minimum. Cars will not be registered by the Road Transport Department unless they are insured. Comprehensive insurance is not compulsory, but all cars financed by loans will need such insurance. Documented overseas no-claim bonuses (NCB) are recognised by Malaysian insurers.

EMERGENCY AND BREAKDOWN SERVICES

Various organisations like automobile associations, insurance companies and car manufacturers provide automobile emergency and breakdown services, with the AAM being the largest. It offers members a variety of services to members like free personal accident insurance, 24-hour nationwide breakdown services, new and used car financing, insurance, technical advice, free legal advice, road tax and driving licence. *(Refer to Appendix 15 for a listing of companies providing such services.)*



5 Medical and Dental Facilities

- **MEDICAL FEES**
- **MEDICAL INSURANCE**
- **DENTAL AND OPHTHALMOLOGY SERVICES**

Malaysia has good public and private health systems. General hospitals, district hospitals and clinics provide care for all at minimal charges but non-citizens are required to pay higher rates. Private medical facilities present an alternative and are found in all major cities and towns. Modern and efficient facilities and services are available in major hospitals and specialist centres. Doctors and specialists are trained to international standards. Malaysia has adequate medical specialists and physicians to treat a variety of medical problems both in government and private hospitals. The National Heart Institute or Institut Jantung Negara (IJN) in Kuala Lumpur provides state of the art treatment and care for heart ailments. The Institute is fast becoming a popular treatment centre for patients from neighbouring countries.

Medical prescriptions are also handled by hospitals and clinics rather than independent pharmacies, although there are many pharmacies that offer over-the-counter prescriptions supervised by a pharmacist.

Most companies employing expatriates provide medical facilities and will have an approved panel of general practitioners (GPs) for their employees. Refer to Appendix 14 for a listing on government and private hospitals.

For more information, log on to: www.moh.gov.my or www.health.com.my



The government is actively promoting medical tourism and special initiatives have been undertaken to attract tourists to use the excellent and affordable medical facilities and the recreational facilities available in the country. *For more information, log on to www.tourism.gov.my*

MEDICAL FEES

Medical fees vary from government to private hospitals depending upon whether the consultation is with a GP or a specialist. Medical fees with a GP starts from RM30.00 for a consultation in any small private clinic, without medication being prescribed. For specialist consultations, fees start from RM60.00 depending upon the location, level of treatment and facilities of the private hospital. Seeking advice from the Malaysian Medical Association (MMA) or other resident expatriates is often a way of finding out the medical services that best serve the individual's needs.

MEDICAL INSURANCE

Expatriates should consider insuring themselves for personal accident, personal liability and hospitalisation benefits. Those who already have private insurance in their own country should enquire on extending their coverage while in Malaysia. Most employers will provide insurance coverage for their foreign employees and families during the tenure of their employment

in Malaysia. Insurance is readily available in Malaysia for expatriates who are not covered, or if in need of additional coverage.

Hospitalisation and specialist medical treatments, especially for surgery, can be costly and expatriates and their families need to have adequate coverage. *Refer to Appendix 15 for a listing of insurance companies.*

DENTAL AND OPHTHALMOLOGY SERVICES

Many public and private medical centres provide dental and optical services. Dental facilities are good, using modern technology. Prices for dental care such as scaling and polishing start from RM50 depending upon the work required. Fillings start from RM55, tooth extraction and medication range from RM25 - RM50. Crowning and dentures range from RM600 onwards. *For more details, contact the Malaysian Dental Association: Tel: 03 2095 1532 or log on to www.mda.org.my*

For optical services, patients can either seek treatment at specialist medical centres or visit the Tun Hussein Onn National Eye Hospital in Petaling Jaya, which offers specialist eye treatment. *For a listing of dental clinics, refer to Appendix 14.*





6

Education

- **EDUCATION FACILITIES PROVIDED BY GOVERNMENT**
- **ENROLMENT IN GOVERNMENT SCHOOLS**
- **PRE-SCHOOL EDUCATION**
- **INTERNATIONAL SCHOOLS**
- **DEGREE/DIPLOMA PROGRAMMES**

Malaysia has a well developed and quality education system – both public and private. There are reputable international schools in all major towns with English, French, German, Japanese, Korean and Taiwanese as the medium of instruction. There are also private colleges and universities offering twinning programmes with other well-known universities and major colleges from throughout the world. Quality education from nursery right up to the highest level of university education is available at an affordable cost. Malaysia is already becoming an educational centre of excellence for the region. Currently, there are more than 40,000 foreign students enrolled in Malaysian schools and institutions of higher learning.

EDUCATION FACILITIES PROVIDED BY THE GOVERNMENT

The local school curriculum is taught in *Bahasa Malaysia*, Mandarin and Tamil. English is a subject taught in all schools and is also the medium of instruction for mathematics and science subjects.

ENROLMENT IN GOVERNMENT SCHOOLS

Expatriate children wishing to study in government schools have to apply for a place and the application must be submitted for approval to the Ministry of Education. Once approved, an application for a Student Visa must be submitted before the school can accept the student. Expatriate students are not entitled to free education like local students and will have to pay fees



as determined by the government. The cost of education at local schools is affordable but language could be a barrier for expatriate children. International schools cost substantially more than public schools but they cater to students who require continuity of education.

PRE-SCHOOL EDUCATION

Pre-school education is offered by all international schools and also by some private kindergartens.

INTERNATIONAL SCHOOLS

International education is available in most major cities, using various curricula including American, Australian, British, French, German, Indonesian, Japanese and Taiwanese.

Expatriate families prefer to live in close proximity to their children's school, as travelling across town can be time consuming. Many international schools operate their own buses or hire bus contractors to transport children to and from school. Currently, school bus fares to and from international schools range from RM350 to RM1,700 per semester, depending upon location and distance from school to home.

Fees vary from school to school and discounts are normally provided for families with more than one child attending the same school. Registration fees for example, range from RM500 to RM15,000 depending on the level

(pre-school, elementary and high school) and this is normally non-refundable. Tuition fees range from RM600 to RM32,000 per semester. *For a listing of international schools, refer to Appendix 16.*

DEGREE/DIPLOMA PROGRAMMES

There are many established colleges in Malaysia that offer degree and diploma programmes. Several institutions of tertiary education offer twinning programmes, where the tuition is divided between studies at a Malaysian institution and an overseas university. Some foreign universities have also established Malaysian campuses to conduct their respective programmes. The foreign university branch campuses in Malaysia are Curtin University of Technology (Sarawak Campus), Swinburne University of Technology (Sarawak Campus), University of Nottingham (Malaysia Campus) and Monash University (Sunway Campus).

Malaysian universities offer part time post graduate courses including Masters of Business Administration (MBA) that may appeal to expatriates working and staying in Malaysia. *For more details, log on to www.studymalaysia.com.my*





7

Banking and Insurance

- **BANKING**
- **REMITTANCES**
- **INSURANCE**

BANKING

Malaysia has a well managed and efficient banking system monitored by the Central Bank (Bank Negara Malaysia). In addition to local banks several foreign banks have set up branches in the country and provide state-of-the-art services including night banking facilities.

Banking hours vary from bank to bank and branch to branch but most banks operate from Monday to Friday, 9.30 am till 4.00 pm. However, banks in the states of Terengganu, Kelantan and Kedah are closed on Fridays but operate on Sundays.

Major banks including foreign banks located in main cities and shopping malls are open on Saturdays and Sundays. The operational hours vary from bank to bank with some providing night banking facilities.

Bank services include remittances into and out of the country, foreign currency accounts and credit card facilities, online banking or telephone banking and bill payment services. Expatriates wishing to open savings or current (cheque) accounts are required to produce their passport and letter of introduction from their employers.



REMITTANCES

Payments to countries outside Malaysia can be made in most foreign currencies. Payment to non-residents for the repatriation of profits by foreign investors, dividends, interest, royalties, rental and commissions are freely permitted. Payment to non-residents, for repatriation of portfolio capital and profits, are subject to the payment of a levy by non-residents. Payments for the importation of goods and services are also freely allowed but have to be in a foreign currency which commercial banks are authorised to handle. Investments abroad and payments under a guarantee for non-trade purposes require prior approval from Bank Negara if the amount exceeds RM10,000. For more information, log on to www.bnm.gov.my. For a listing of major commercial banks, refer to Appendix 17.

INSURANCE

Insurance facilities and services in Malaysia are similar to those found in other parts of the world. Expatriates are advised to purchase some form of insurance with regard to health, travel and property. The insurance industry is also regulated in Malaysia and the premiums are standardised.

Personal liability and personal property policies may only cover incidents in Malaysia and it is important for those who travel regularly to ensure policies have worldwide coverage. It is also important to find out whether items like laptop computers and cameras are covered by household insurance policies

when the items are used outside the house. Insurance policies can either be based upon depreciation or full replacement of the items. This should be clarified when taking out the insurance policy. It is recommended that receipts for all purchases be retained in order to facilitate an insurance claim or inspection by Customs officials. Household possessions should be reassessed annually to enable additional coverage on new items purchased.

Homeowners and household insurance are highly recommended for protection against theft and fire to personal property. Most insurance companies are affiliated with international companies and insurance processes are similar to the rest of the world. *For a listing of some major international insurance companies, refer to Appendix 15.*





8

Leisure and Entertainment

- **CINEMAS AND THEATRES**
- **HOLIDAYING IN MALAYSIA**
- **READING MATERIALS**
- **CLUBS AND ASSOCIATIONS**
- **GOLF CLUBS**
- **INTERNATIONAL EVENTS**
- **ALCOHOL AND CIGARETTES**
- **MALAYSIAN CUISINE**
- **INTERNATIONAL CUISINE AND FINE DINING**
- **HALAL AND NON-HALAL DINING**
- **FOOD CATERING SERVICES**

Kuala Lumpur is a world-class, cosmopolitan city with a wide range of leisure and entertainment outlets. The range of options is more limited outside the capital but places like Langkawi, Johor Bahru, Kota Kinabalu, Kuching and Penang also have a comprehensive range of leisure and entertainment activities. There are many interesting tourist destinations to visit in the capital and the rest of the country.

The year 2007 is designated as Visit Malaysia Year and several exciting programmes have been drawn up particularly for foreigners. 2007, also marks the 50th year of independence of the nation. Plans to celebrate the Golden Jubilee celebration on a massive scale have commenced. Log on to www.tourism.gov.my for more information.

Visitors have the opportunity to learn about Malaysian culture, discover a new part of the world, interact with people from diverse backgrounds and even learn a new language. There is a wide range of cultural activities to



Picture courtesy by Tourism Malaysia (www.tourismmalaysia.gov.my)



keep children productively occupied. These include performing arts, dance, theme parks, visual arts and movies as well as sports and recreational activities.

CINEMAS AND THEATRES

Visitors can find cinemas showing the latest commercial releases throughout Malaysia, with major box office releases screened simultaneously with major cities of the world. Many of the cinemas are located in large shopping malls with easy access to parking. Telephone reservations are normal for new movie releases and screening times are listed in the daily newspapers. Berjaya Times Square in the capital also has an IMAX theatre. Most cinemas are well maintained with the latest equipment including large screens and comfortable seats. *For a complete list of theatres in Malaysia, show times, and links to online reservations, log on to:*

www.cinema.com.my

www.gsc.com.my

www.megapavilion.net

www.tgv.com.my

www.timessquarekl.com (IMAX theatre)

www.cathaycineplex.com

Local and international performances of live music and theatre are also available at venues such as the Malaysia Tourist Information Complex (MATIC), Istana Budaya, Petronas Philharmonic Orchestra Hall and The Arena of Stars at Genting Highlands. One of the most popular theatrical



Picture courtesy by Tourism Malaysia (www.tourismmalaysia.gov.my)

groups is The Actors Studio situated in Kuala Lumpur and Penang where regular performances are held. Performances are advertised on websites, daily newspapers and magazines.

HOLIDAYING IN MALAYSIA

The country has many holiday attractions that will appeal to expatriates. Attractive and competitively priced packages to all parts of the country make Malaysia a holiday paradise.

Being a multi-cultural country, Malaysia has many fascinating encounters awaiting those who want to discover more. Multi-culturalism means the fabric of society is punctuated with elaborate festivities, unique arts and crafts, dance forms, food and a unique blend of architectural forms.

Malaysia's geographically diverse attractions begin from Mount Kinabalu, one of the highest mountain in South East Asia, down to a shoreline surrounded by over a thousand islands, of which 38 are protected as marine parks. The natural environment is perfect for bird watching, trekking through ancient rainforests, mangrove forest exploration, white-water rafting, caving, mountain climbing, hiking in cooler temperature hill stations and camping. Along the extensive coastline and in the waters surrounding the tropical islands, the sun, sea and underwater adventure offer relaxation and excitement for all. The seas are ideal for diving, snorkeling, swimming, yachting, wind-surfing, boating, game fishing and underwater photography.



Malaysia also presents an exotic blend of the old and new that encapsulates the best that Asia has to offer. The National Park situated in Pahang, and Batu Caves in Kuala Lumpur in Peninsula Malaysia; the Gunung Mulu National Park in Sarawak; the Kinabalu National Park, and the Sepilok Orang Utan Sanctuary in Sabah are some of the main attractions.

The Gunung Mulu National Park and the Kinabalu National Park have been included in the World Heritage List and are must-visit scenic areas. The 52,864 hectare Gunung Mulu National Park is dominated by Mount Mulu which is a 2,377 meter sandstone pinnacle and at least 295 kilometres of explored caves. With its deeply incised canyons, wild rivers, rainforest mountains, spectacular limestone pinnacles, and cave passages Mulu has outstanding scenic values.

The Mulu Caves is also the world's most extensive cave system that includes the world's largest cave chamber, the world's longest cave passage and the longest cave in South East Asia. Four well lit caves are open to visitors daily while the others are accessible to visitors with specialised caving equipment.

The Kinabalu National Park in Sabah is dominated by Mount Kinabalu which is 4,095 metres in height. The Park has been designated as a Centre of Plant Diversity for South East Asia and is exceptionally rich in species of flora from the Himalayas, China, Australia, Malaysia as well as pan-tropical flora. The Park also is home to the majority of Borneo's mammals, birds, amphibians and invertebrates.

Expatriates interested in ecotourism can visit Kenyir Lake in Terengganu, Endau Rompin Lake in Pahang and Danum Valley in Sabah. Malaysia also

offers exciting holidays in island resorts found off Peninsular Malaysia and Sabah. These include Penang, Langkawi, Pangkor, Tioman, Redang, Pulau Perhentian, Labuan and Sipadan. *For more information, log on to www.cuti.com.my*

The PETRONAS Twin Towers in Kuala Lumpur depicts the technological progress achieved and is the most prominent landmark in the country. The urban landscape also features many heritage buildings such as the Sultan Abdul Samad Building, the Ku Kongsi in Penang, A Famosa and the Portuguese Settlement in Malacca. Visitors to these places can get an insight of the culture and traditions of these groups.

Just a short drive away from the cities, the villages or *kampungs* provide the essence of life that is uniquely Malaysian. Here, a lush carpet of rice paddy fields, water buffaloes and children fishing in small streams that adjoin extensive rubber or oil palm estates, present a tranquil rural scene. Visitors can experience these attractions driving along an excellent road system or use a transportation network that efficiently covers the whole country.

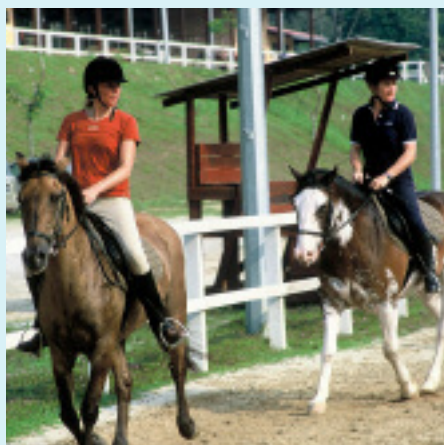
Malaysia is also a very family-friendly holiday destination and children are welcome in all establishments. There are various theme parks, cultural attractions, museums, national parks and water sports for them to discover and enjoy. *For more information on events and activities, log on to www.tourism.gov.my. For a listing on travel agencies, refer to Appendix 18.*

READING MATERIALS

The National Library in Kuala Lumpur and various state libraries throughout the country provide extensive reading and reference materials. There are also foreign libraries and cultural centres such as Alliance Française, Goethe-Institute, The British Council and the Lincoln Cultural Centre. Many books published on Malaysian history, life, travel, food and culture provide excellent reference for living in Malaysia.

Several major bookshops, mostly located in shopping malls provide a comprehensive selection of books on most topics. Large book stores like Borders, Kinokuniya, MPH Bookstore, Popular Books and Times Bookstore have outlets in Kuala Lumpur and major cities throughout the country.

A significant number of daily newspapers are available in Malaysia including international papers like the Asian Wall Street Journal and the International Herald Tribune. The local English newspapers include The New Straits Times, The Star, The Malay Mail and The Sun which is distributed free. In



addition, there are newspapers available in the Bahasa Malaysia, Chinese, Tamil and Japanese. Popular international magazines covering business, sports, leisure, home improvement, fashion and lifestyle are readily available. A useful English magazine, *The Expat*; a monthly publication provides useful information for expatriates. *For more information, contact 03 2284 9564, or log on to www.expatsKL.com*

CLUBS AND ASSOCIATIONS

There are many clubs catering to various interests ranging from business, recreation and sports. Most clubs usually levy two one-off payments and this depends upon the club's exclusivity, waiting list and location. Most clubs levy an entrance fee, a refundable deposit and a monthly subscription. Most clubs require two members to introduce and nominate new members. There are also several expatriate associations and clubs which organise a variety of social events. *Refer to Appendix 19 for a listing on clubs and associations.*

GOLF CLUBS

Golf is a popular sport with over 190 courses available all over Malaysia. These include a few exclusive ones that were designed by world renowned golfers. Some clubs have a diverse range of sporting and recreational facilities for the whole family. *Refer to Appendix 20 for a listing of golf clubs in Malaysia.*



INTERNATIONAL EVENTS

Malaysia organises several world-class events like the Malaysian F1 Grand Prix, Formula 1 Power Boat World Championship, Le Tour de Langkawi, Langkawi International Maritime & Aerospace (LIMA) Exhibition, International Indian Film Awards, the World Lion Dance Competition and the Monsoon Cup.

Soccer, badminton, field hockey, bowling, tennis, squash, martial arts, horse riding and skate boarding are other popular sports in Malaysia.

Visit Malaysia year 2007 (VMY2007) and 50 Years of Independence

Malaysia celebrates 50 years of independence or its Golden Jubilee Celebration this year to commemorate the country's Independence or Merdeka Day on 31st August. The month of August will be filled with a myriad of parades, cultural performances, street shows and carnivals.

The Golden Jubilee celebration marks a significant milestone in the history of the nation. The countdown to this momentous event will be at the Merdeka Square in Kuala Lumpur on the eve of Merdeka Day. Another highlight of the year will be the *Citrawarna* or Colours and Flavours of Malaysia parade, an annual event showcasing the rich and diverse cultural heritage of the country.

Many events are being organised to celebrate the occasion, including the Malaysian Open Golf Championship, KL International Buskers Festival, National Water Festival-Labuan International Sea Challenge, Penang International Dragon Boat Festival, Rainforest World Music Festival and Gawai Dayak and Borneo Cultural Festival. *For more information, log on to www.tourism.gov.my*

ALCOHOL AND CIGARETTES

Alcohol and cigarettes are relatively expensive in Malaysia because of high taxes imposed in an effort to lower consumption and can be purchased from most convenience stores, restaurants and supermarkets. International brands of alcohol and cigarettes are available throughout the country. Smoking is restricted in public places but designated smoking areas are provided in some locations like airport terminals and air-conditioned restaurants.

Both alcohol and cigarettes can be purchased at reduced prices from duty-free stores upon arrival into the country or on duty-free islands like Langkawi and Labuan.

MALAYSIAN CUISINE

Malaysia is a gourmet's paradise where affordable and tasty food is available all over the country. The main cuisines are Malay, Chinese and Indian and vegetarian.

Popular local specialties include *satay* made from marinated meats (mainly chicken and beef) served with a peanut sauce; *rendang* (chicken or beef cooked in coconut milk and spices), *nasi lemak* (rice cooked in coconut milk and served with spicy anchovies), and a wide range of noodles and rice dishes. Some other popular dishes include: *dim sum* (Chinese savoury and sweet dumplings), *roti canai* (a thin, flour-based bread.), *dhosai* (a thin pancake made from rice and bean flour served with curry), *nasi kandar* (a smorgasbord of various meats and vegetables served with rice) and *teh tarik* (literally, 'stretched tea' or tea with condensed milk that has been poured from cup to cup to create a frothy head). The various states have



their own specialty or traditional foods and many Malaysians will go out of their way when travelling to seek out such dishes.

Open food courts that serve meals of various local cuisine that are affordable and tasty are available in towns. It is possible to sample a variety of dishes as several hawker stalls are located in such food centres. Food courts are also located in most shopping malls where different types of cuisine are served.

Fruits

Malaysian fruits that are popular include durian, jackfruit, mangosteen, mango, pomelo, star fruit (carambola), langsat, rambutan, ciku and guava. Other temperate fruits like grapes, apricots, apples, avocado, berries, cherries, kiwifruit, oranges and pears are imported and are available in major supermarkets and hypermarkets.

INTERNATIONAL CUISINE AND FINE DINING

Dining out is popular in Malaysia. Fine dining is available in hotels and restaurants where many different local ethnic and international cuisines are served. International cuisines include Thai, Korean, Vietnamese, Indonesian, European, Western, Middle Eastern, Iranian and Asian.

In addition, fast food outlets like Burger King, Domino's Pizza, Kentucky Fried Chicken, Kenny Rogers, McDonalds, Nando's, Shakeys and Pizza Hut are available throughout the country. Pastries and cakes are available at well-known delicatessens like Secret Recipe and La Manila.



HALAL AND NON-HALAL DINING

Halal food is prepared according to Islamic requirements. Many Malaysian restaurants serve *halal* food with approved certificates endorsed by the relevant authorities. While many restaurants offer *halal* food in order to appeal to a broad cross section of society, there are some local and foreign restaurants including those in major hotels that serve *non-halal* food.

FOOD CATERING SERVICES

Food catering services are readily available as many Malaysians and expatriates prefer to entertain at home. Caterers can organise all types of functions such as sports and family events. Major hotels and restaurants also offer this service. *For a listing of food caterers, refer to Appendix 21.*



9

Shopping

- **SHOPPING MALLS**
- **HYPERMARKETS AND SUPERMARKETS**
- **NIGHT MARKETS OR PASAR MALAM**
- **TAILORING**
- **SOUVENIERS**
- **DUTY FREE SHOPPING**

SHOPPING MALLS

The country has a good selection of shopping malls, with well-known anchor tenants. Items ranging from famous designer clothes to Malaysian local designs, leather goods, jewellery, time pieces, electrical and electronic items and local handicrafts are available. Prices are competitive with good bargains especially during regularly-held sales. The annual Malaysia Mega Sales Carnival offers attractive discounts and special offers for a variety of merchandise.

Shopping malls are open seven days a week from 10 am until 10 pm. They are air-conditioned and have food courts and entertainment outlets. Prices are fixed in departmental stores and most large shops.



HYPERMARKETS AND SUPERMARKETS

Hypermarkets and supermarkets located in all major and some smaller towns that offer a broad range of merchandise are popular among Malaysians. Prices are fixed and merchandise includes a variety of locally manufactured and imported goods. Among the more popular large stores include Giant, Tesco, Carrefour, Makro, Cold Storage, Jusco, Isetan, Harvey Norman, Ikea, Parkson and Metro Jaya. *For more information, log on to www.malaysiamydestination.com*

Beef, lamb, pork and poultry meat are readily available. Beef and lamb are imported from Australia and New Zealand. A wide variety of local fish and shellfish is available in supermarkets and wet (fresh produce) markets. Crabs, oysters, lobsters and mussels are mostly imported.

Local or imported fresh milk is available in the form of full cream, low fat, skim and condensed milk, and yoghurt and cheeses are available in supermarkets.

A wide variety of temperate vegetables and fruits are grown in Malaysia, primarily in Cameron Highlands and are available in the supermarkets and hypermarkets.

Convenience stores and mini markets are found all over Malaysia, including 7-Eleven outlets and KIOSK which are open 24 hours.

NIGHT MARKETS OR PASAR MALAM

Stalls in *pasar malam* or night market, operate from 5 pm to 11 pm. This is where small traders sell an extensive range of produce from fresh fruits and vegetables to local takeaway food specialties, clothing and utilitarian items. This is a very colourful scene full of noise and excitement as stall owners try to attract business. The *pasar malam* is a great introduction to a unique form of trading and something worth visiting for all foreigners.

There are also farmers' markets (*pasar tani*). In East Malaysia, this type of market is called a pasar tamu. Fruits and vegetables and herbal produce sold here are often cheaper than supermarkets.

TAILORING

Tailoring for men and women's clothing is common and is relatively inexpensive. Many shops also offer alteration and mending services.

SOUVENIRS

Craftwork is an invaluable part of Malaysia's heritage, embodying the heart and soul of its people. Souvenirs or giftware items available in Malaysia, encompassing a broad range of personal and decorative items that cut across a diverse range of industries which include textiles, pewter, plastics, electrical and electronic products, jewellery, antiques, wood products, furniture, leather, ceramics, clay, cosmetic and beauty products, glass and even food products such as tea, coffee and confectionary. Batik, pewter items, ceramic products and wood products are much sought after by visitors and can be purchased in most shopping complexes. The Central Market or Pasar Seni in Kuala Lumpur is the place for souvenirs and handicraft at bargain prices and is also a place where one can get his portrait painted, key chains embossed with names of loved ones and even purchase traditional costumes.

DUTY FREE SHOPPING

Many items like cameras, toiletries, watches and electronics and branded clothing and accessories are duty-free. They are fairly cheap and readily available at shopping malls. *For the full list of duty free items, log on to www.customs.gov.my*



10 Guidelines for Employment

- **ENTRY INTO MALAYSIA**
- **OTHER TYPES OF PASSES ISSUED**
- **VISIT PASS (TEMPORARY EMPLOYMENT)**
- **EMPLOYMENT PASS**
- **VISIT PASS (PROFESSIONAL)**
- **DEPENDANT'S PASS**
- **STUDENT'S PASS**
- **EMPLOYMENT OF EXPATRIATES**
- **APPLYING FOR EXPATRIATE POSTS**
- **EMPLOYMENT OF FOREIGN WORKERS**
- **APPLYING FOR WORK PERMITS**
- **DOMESTIC HELP AND DRIVER**

ENTRY INTO MALAYSIA

A visitor can obtain a visit pass for the purpose of a social or business visit at the point of entry provided he has a valid passport and visa (where necessary) which allows him to stay in the country temporarily.

A Visit Pass is issued to visitors for the purpose of a social or / and business visit such as;

- Owners and company representatives entering Malaysia to attend a company seminar or meeting or to inspect the company's account
- Investors or businessmen entering to explore business opportunities and investment potential



- Foreign representatives of companies entering to introduce goods for manufacture in Malaysia
- Property owners entering to negotiate, sell or lease properties
- Foreign reporters from mass media agencies
- Participants in sporting events

A Visit Pass cannot be used for employment.

OTHER TYPES OF PASSES ISSUED

Other than applications for entry for the purpose of social or business visits, applications for all other types of passes must be made upon arrival in Malaysia.

VISIT PASS (TEMPORARY EMPLOYMENT)

Issued to persons who enter the country to take up employment for less than 24 months or earn a monthly income of less than RM3,000.

EMPLOYMENT PASS

Issued to foreigners who enter the country to take up employment for a minimum period of two years and earn a monthly income of not less than RM3,000.

VISIT PASS (PROFESSIONAL)

Issued to foreigners who wish to enter the country on a short term contract with any agency. This includes, artistes, those entering for filming, researchers recognised by the Malaysian Government, members of International Organisations, volunteers, those entering for religious purposes, experts in installation or maintenance of machines/computers and trainees or technical trainees.

The validity of these passes varies but do not exceed 12 months at any one time.

DEPENDANT'S PASS

Issued to wives and children of foreigners who have been issued with an employment pass. This pass may be applied together with the application for an employment pass or after the employment pass is approved.

STUDENT'S PASS

Issued to foreigners who enrol as students in approved educational institutions.

EMPLOYMENT OF EXPATRIATES

- a) For manufacturing companies with foreign paid-up capital of US\$2 million and above, automatic approval is given for up to 10 expatriate posts, including 5 key posts (Key posts are posts that are permanently filled by foreigners). Expatriates can be employed for up to a maximum of 10 years for executive posts and 5 years for non-executive posts;
- b) For manufacturing companies with foreign paid-up capital of more than US\$200,000 but less than US\$2 million, automatic approval is given for up to 5 expatriate key posts. Expatriates can be employed for up to a maximum of 10 years for executive posts, and 5 years for non-executive posts.
- c) Manufacturing companies with foreign paid-up capital of less than US\$200,000 can be considered for both key and time posts based on specific criteria. Key posts can be considered where the foreign paid-up capital is at least RM500,000. The number of key posts and time posts allowed depends on the merits of each case.

- d) For Malaysian-owned manufacturing companies, automatic approval for the employment of expatriates for technical posts, including R&D posts will be given as requested.

An expatriate who is transferred from one post to another within the same company is required to obtain a new employment pass.

Holders of employment passes will be issued with multiple entry visas valid for the duration of the employment pass.

APPLYING FOR EXPATRIATE POSTS

All applications for expatriate posts from new and existing companies in the manufacturing and related services sectors should be submitted to the Malaysian Industrial Development Authority.

Fees for passes

Key Post	RM300 per annum
Managerial / Professional & Technical	RM200 per annum
Dependant's Pass	RM90 per annum
Temporary Employment Pass	RM60 per annum
Social Visit Pass	RM90 per annum

EMPLOYMENT OF FOREIGN WORKERS

Foreign workers can be employed in the construction, plantation, service (domestic servants, restaurant workers, cleaners, workers in cargo handling, welfare homes, laundrettes, island resorts and as caddies) and manufacturing sectors.

Applications from companies in all sectors in Peninsular Malaysia should be submitted to the Ministry of Home Affairs.

An annual levy on foreign workers is imposed:

Manufacturing	RM1,200
Construction	RM1,200
Plantation	RM540
Agriculture	RM360
Services	RM1,800

APPLYING FOR WORK PERMITS

Normally, applications for work permits are initiated by employers before their foreign employees enter Malaysia. If this has not been done, most expatriates can normally enter the country on a Visitor's Visa and then apply for an Employment Pass. Foreign nationals wishing to work in Malaysia must apply to the Department of Immigration in Putrajaya for an Employment Pass.

Passes are usually valid for one to three years for first time applicants and subsequently for five years upon approval. Passes are more readily granted to individuals possessing technical skills or knowledge unavailable in the local labour market. Most sponsoring organisations normally handle all details involved in obtaining necessary passes for the employee, spouse and family members who will be granted Dependant or Student Visas.

Spouses, children and unmarried partners of an Employment Pass holder are not entitled to work unless they receive a separate Employment Pass. However, they may engage in voluntary work. Some expatriates are eligible to apply for an Expatriate Identification Card which doubles as an identification card.

SPOUSE PROGRAMME

This programme allows foreign husbands and wives married to Malaysian citizens to work in the country. Potential applicants can apply for an Employment Pass and Dependant Pass. With effect from 18 March 2007, foreign spouses will be given visas valid for five (5) years, instead of the yearly visa that is required for annual renewals. *For more details, log on to www.imi.gov.my*

DOMESTIC HELP AND DRIVER

Most Malaysians employ domestic help who are mostly foreign workers. There are many approved agencies that can handle all matters pertaining to the employment of domestic help. It is advisable for employers to insure their domestic help against illnesses and accidents.

The duties of the domestic help will usually cover basic household chores and some groceries shopping. Their salaries range from RM700 to RM1,000. There are additional costs (agency fees, medical and repatriation costs) that will be outlined by the employment agency. There is also an annual levy of RM400 imposed on domestic help. It is possible to employ locals as drivers and their salaries range from RM1000 to RM1800 a month.



LEMBAGA HASIL CAWANGAN PET

<http://www.hasi>



11 Income Tax

- **PERSONAL TAX**
- **COMPANY TAX**
- **DOUBLE TAXATION AGREEMENTS**

PERSONAL TAX

All income of companies and individuals accrued in/derived from or remitted to Malaysia is liable to tax. However, income remitted to Malaysia by resident companies (other than companies carrying on the business of banking, insurance, air and sea transportation), non-resident companies and non-resident individuals are exempted from tax.

Workers in Malaysia pay income tax on income earned in the current year based on a sliding scale. Annual returns are based upon self-assessment. Resident individuals with chargeable income of RM16,667 and above per annum, after deduction of personal relief are taxed from 1-28 %. Non resident individuals, who are not entitled to any personal relief, are charged a flat rate of 28%.

Effective from the year of assessment 2004, income remitted to Malaysia by a resident individual is exempted from tax. *For more details, log on to www.hasil.org.my*



Residence status for tax purposes is not determined by nationality or citizenship but rather by the duration of stay in the country. Those who stay in Malaysia for less than 182 days per year are treated as non-residents. Any foreign income received in Malaysia by a non-resident is exempted from tax.

COMPANY TAX

A company whether resident or not is assessable on income accrued in or derived from Malaysia. Income derived from sources outside Malaysia and remitted by a resident company is exempted from tax, except in the case of the banking and insurance business, sea and air transport undertakings. A company is considered a resident in Malaysia if the control and management of its affairs are exercised in Malaysia.

Under the Budget 2007 corporate tax was reduced by two percentage points in two stages. For the year of assessment 2007, the corporate tax was reduced to 27% and 26% for the year of assessment 2008. Prior to this reduction a corporate rate of 28% applied to both resident and non-resident companies.

DOUBLE TAXATION AGREEMENTS

Agreements for the avoidance of double taxation between Malaysia and several countries to prevent the incidences of double taxation on income such as profits, dividends, interest and royalties that are derived from one country and remitted to another country are in force. Diplomatic missions in Malaysia and tax authorities in the respective countries and the Malaysian Inland Revenue Board can provide information on the countries concerned.

Sources of income subject to income tax mainly involve business, trade or profession, employment, dividends, interest or discounts, rents and royalties and occupation of non-business premises. Payments for technical advice, assistance or services rendered in connection with technical management or administration of any scientific, industrial or commercial undertaking, venture, project or scheme are also taxable. The advice of a tax consultant should be sought when necessary. *For more information, log on to www.hasil.org.my*





12 Employees Provident Fund (EPF)

The Government operates a mandatory employees' provident fund or superannuation scheme to assist workers when they retire. Under the Employees Provident Fund Act 1991, the minimum contributions by employers is 12% of the employee's monthly wages and 11% of the employee's monthly wages. Expatriates and their employers are exempted from compulsory contributions.

However, expatriate employers can elect to contribute at the rate of RM5.00 per month per employee and expatriate employees are required to contribute 11% of their monthly wages. Expatriates can claim back these payments when they leave the country. *For more details, log on to www.kwsp.gov.my*



13 Malaysia - My Second Home Programme

- **TERMS AND CONDITIONS**
- **SPONSOR**
- **INSURANCE COVERAGE / MEDICAL REPORT**
- **INCENTIVES**
- **EDUCATION**
- **TAXES**
- **SECURITY VETTING**
- **PROCEDURES**
- **APPLICATION FORMS**
- **APPROVING AUTHORITY**
- **RESTRICTIONS**
- **FEE RATE**
- **CATEGORIES NOT ELIGIBLE TO APPLY UNDER THIS PROGRAMME**

In 2002, the Malaysian Government introduced the Malaysia - My Second Home Programme, replacing “The Silver Hair Programme” to encourage foreigners to come and live in Malaysia. All citizens of countries recognized by Malaysia regardless of race, religion, gender or age are welcome to participate in this program. In addition, this program allows applicants to bring their spouses, and children who are unmarried and below the age of 18. Upon approval, an applicant is granted a 10 - year social visit pass with multiple entry visa that is renewable. Under this programme foreigners are allowed to purchase residential property.

Visa holders under this programme are not permitted to work in the country except under very special circumstances where the person possesses unique skills. Visa holders are allowed to invest in the country as long as it



does not involve full time paid employment. They are also permitted to do charity work provided they inform the Immigration Department. Citizens of Israel, Montenegro and Yugoslavia are not eligible to apply under this programme.

TERMS AND CONDITIONS

There is no age limit and applicants may bring along their dependants who are not schooling and also one maid. The financial requirements vary, depending on the age of the applicant.

Effective April 2006 successful applicants are required to comply with the following conditions upon receipt of conditional approval.

An applicant below 50 years old is required to open a fixed deposit account of RM300,000 in a local Malaysian bank. After a period of one year, the participant can withdraw up to RM240,000 for house purchase, medical and children's education and maintain the balance of RM60,000 from the second year onwards and throughout the stay in Malaysia under this programme.

In the case of an applicant aged 50 years and above, the applicant can choose to either open a fixed deposit account of RM150,000 in a local Malaysian Bank, OR show proof of monthly off-shore income of RM10,000. After a period of one year, the participant who had complied with the fixed deposit criteria can withdraw up to RM90,000 for house purchase, medical and children's education and maintain the balance of RM60,000 from the second year onwards and throughout the stay in Malaysia under this programme.

SPONSOR

Effective April 2006 the requirement for a sponsor has been waived.

INSURANCE COVERAGE / MEDICAL REPORT

An applicant must possess a valid medical insurance policy from any insurance company that is valid in Malaysia, together with a medical report from any recognised medical institution.

INCENTIVES

Participants of Malaysia My Second Home Programme are provided with various incentives to make their stay even more comfortable and enjoyable in Malaysia. The incentives provided are as follows:

(i) House Purchase

Each participant is allowed to purchase up to two units of residential houses at a minimum prices above RM250,000 each, depending on the location of the property.

Generally the minimum price for the purchase of houses in Malaysia are as follows:

- Above RM350,000 each for certain areas in the state of Sarawak
- Above RM250,000 for other states

(ii) Car Tax Exemption

Import tax exemption for participants to bring in one personal car or excise duty and sales tax exemption for purchase of one car manufactured locally.

(iii)Maid

Allowed to bring one maid from Indonesia, Philippines, Sri Lanka or Thailand.

EDUCATION

An applicant is allowed to bring along his/her dependants (children) either not schooling or who are schooling in primary, secondary or in any Institution of Higher Learning. However, dependants who are schooling are required to apply for a Student Pass to continue their education in schools or Institutions of Higher Learning recognised by the government.

TAXES

A successful applicant is bound by the policies, systems and regulations of taxes of this country, and does not have exemption qualifications as granted to Diplomatic Missions in Malaysia.

SECURITY VETTING

An approval is given subject to security vetting clearance conducted by the Royal Malaysian Police.

PROCEDURES

An application can be submitted while the applicant is in the country provided that he/she is in possession of a valid pass.

A successful applicant is exempted from the requirement of leaving the country to obtain a Visa from Malaysian Representative Office abroad. A Visa will be issued in Malaysia together with a Social Visit Pass.

APPROVAL AUTHORITY

Applications can be sent directly to Malaysia My Second Home Centre at;

Malaysia My Second Home Centre

Ministry of Tourism Malaysia

Level 23, Menara Dato' Onn

Putra World Trade Center

45 Jalan Tun Ismail

50695 Kuala Lumpur

Malaysia

Phone : 603-2696 3361 / 3353 / 3360 / 3364 / 3351

Fax : 603-2698 8533

E-mail : mm2h@motour.gov.my

Website : <http://mm2h.motour.gov.my>

Applicants who wish to stay in Sabah / Sarawak, should forward their application directly to the Director, State Immigration Department of Sabah / Sarawak;

Department of Immigration, Sabah

Tingkat 6, Bangunan Wisma Dang Bandang
Jalan Tuanku Abdul Rahman
88550, Kota Kinabalu
Sabah
Malaysia
Tel : 6088-80700

Department of Immigration, Sarawak

Tingkat 1 & 2, Bangunan Sultan Iskandar
Jalan Simpang Tiga
93550, Kuching
Sarawak
Malaysia
Tel : 6082-245661 / 240301 / 230317 / 230280 / 230314
Fax : 6088-240390/ 428606

RESTRICTIONS

A successful applicant is strictly forbidden from participating in activities that can be considered as sensitive to the local people like political activities, missionary activities and provocative activities that can be construed as sensitive and a threat to the security of the country; or being employed anywhere in Malaysia unless approved by the government.

FEE RATE

A payment of RM90.00 per year is charged for the issuance of a Social Visit Pass or Visa under the "Malaysia - My Second Home" Programme.

CATEGORIES NOT ELIGIBLE TO APPLY UNDER THIS PROGRAMME

- Husband or wife of a Malaysian citizen
- Holders of Expatriate Pass (Work Permit) and their dependants
- Holders of Student Pass



14 Prohibitions

Trafficking in illegal drugs and pornography are serious offences in Malaysia. Penalties for possession, use, or trafficking of illegal drugs are severe, and convicted offenders can expect long jail sentences, heavy fines or even a mandatory death sentence.

Malaysia strictly enforces its drug laws. Malaysian legislation provides for a mandatory death penalty for convicted drug traffickers. Individuals arrested in possession of 15 grams (1/2 ounce) of heroin or 200 grams (seven ounces) of marijuana are presumed by law to be trafficking in drugs.

The Malaysian criminal code includes a provision for a sentence of caning for certain white-collar crimes, including criminal misappropriation, criminal breach of trust, cheating and corruption.

Unauthorised collection and/or removal of local flora and fauna may be prosecuted as a crime and can result in heavy fines, expulsion, and/or imprisonment. *For more information, log on to www.lawsofmalaysia.com*



Lists of

Appendices



1	Urban Cost of Living	86
2	Learning Centre for Expatriates	88
3	Security Companies	88
4	Real Estate Agencies	89
5	Accommodation Costs	91
6	Serviced Apartments	91
7	Hotels	92
8	Office Rental	97
9	Packers and Movers	102
10	Pest Control Companies	103
11	Postal and Courier Services	104
12	Transportation Operators	105
13	Car Rental and Leasing	108
14	Hospitals	109
15	Major Insurance Companies	113
16	International Schools	114
17	Major Commercial Banks	118
18	Travel Agencies	119
19	Expatriate Associations and Clubs	121
20	Recreation and Leisure Clubs	122
21	Catering Companies	128
22	Embassies and Consulates	129
23	Glossary	134
24	Useful/Emergency Telephone Numbers	139

1 Urban Cost of Living

Urban Executive Cost Of Living Index 2006

Category of Items	Kuala Lumpur & Petaling Jaya			Penang			Ipoh		
	Index			Index			Index		
	2006	2005	% Change (+/-)	2006	2005	% Change (+/-)	2006	2005	% Change (+/-)
Foodstuff	102.7	100.0	2.7	108.5	100.0	8.5	104.2	100.0	4.2
Drinks & Tobacco	106.4	100.0	6.4	108.6	100.0	8.6	104.7	100.0	4.7
Toilet Requisites	110.9	100.0	10.9	112.4	100.0	12.4	104.2	100.0	4.2
Household Goods	105.9	100.0	5.9	103.9	100.0	3.9	101.0	100.0	1.0
Personal Grooming	100.0	100.0	0.0	109.8	100.0	9.8	113.7	100.0	13.7
Medical & Dental Care	111.5	100.0	11.5	106.5	100.0	6.5	111.3	100.0	11.3
Servants	100.4	100.0	0.4	100.9	100.0	0.9	100.0	100.0	0.0
Clothing	112.3	100.0	12.3	103.4	100.0	3.4	102.8	100.0	2.8
Transport	104.8	100.0	4.8	102.7	100.0	2.7	102.9	100.0	2.9
Recreation	101.8	100.0	1.8	109.2	100.0	9.2	103.1	100.0	3.1
Education	102.4	100.0	2.4	100.0	100.0	0.0	105.1	100.0	5.1
Household Amenities	110.1	100.0	10.1	109.8	100.0	9.8	101.8	100.0	1.8
Housing	100.0	100.0	0.0	120.0	100.0	20.0	100.0	100.0	0.0
ALL ITEMS	104.0	100.0	4.0	107.4	100.0	7.4	102.9	100.0	2.9
Excluding Housing	104.8	100.0	4.8	105.6	100.0	5.6	103.1	100.0	3.1
Excluding Housing & Transport	104.7	100.0	4.7	107.0	100.0	7.0	103.2	100.0	3.2

Note: 1. Base Year: 2005 = 100
 2. Survey conducted in July 2006 based on the expenditure pattern of a married couple with one child

Source: Malaysian International Chamber of Commerce and Industry

Johor Bahru			Melaka			Kota Kinabalu			Overall		
Index			Index			Index			Index		
2006	2005	% Change (+/-)	2006	2005	% Change (+/-)	2006	2005	% Change (+/-)	2006	2005	% Change (+/-)
102.9	100.0	2.9	100.1	100.0	0.1	103.1	100.0	3.1	103.5	100.0	3.5
101.0	100.0	1.0	112.4	100.0	12.4	108.7	100.0	8.7	107.0	100.0	7.0
114.1	100.0	14.1	105.8	100.0	5.8	100.3	100.0	0.3	107.9	100.0	7.9
108.1	100.0	8.1	104.4	100.0	4.4	104.1	100.0	4.1	104.7	100.0	4.7
112.9	100.0	12.9	100.0	100.0	0.0	113.7	100.0	13.7	108.2	100.0	8.2
103.2	100.0	3.2	101.6	100.0	1.6	109.9	100.0	9.9	107.7	100.0	7.7
107.5	100.0	7.5	109.9	100.0	9.9	107.5	100.0	7.5	104.6	100.0	4.6
101.6	100.0	1.6	113.9	100.0	13.9	105.7	100.0	5.7	106.3	100.0	6.3
104.1	100.0	4.1	103.6	100.0	3.6	102.5	100.0	2.5	103.4	100.0	3.4
101.2	100.0	1.2	112.9	100.0	12.9	110.6	100.0	10.6	106.1	100.0	6.1
104.7	100.0	4.7	114.2	100.0	14.2	115.0	100.0	15.0	105.5	100.0	5.5
108.1	100.0	8.1	114.4	100.0	14.4	102.4	100.0	2.4	107.7	100.0	7.7
120.0	100.0	20.0	133.3	100.0	33.3	120.0	100.0	20.0	114.9	100.0	14.9
106.4	100.0	6.4	108.7	100.0	8.7	107.5	100.0	7.5	106.1	100.0	6.1
104.5	100.0	4.5	106.4	100.0	6.4	104.9	100.0	4.9	104.9	100.0	4.9
104.7	100.0	4.7	107.9	100.0	7.9	105.9	100.0	5.9	106.1	100.0	6.1

2 Learning Centre for Expatriates

SELANGOR / WILAYAH PERSEKUTUAN

Boston Language Academy

T | 03 2148 6337

F | 03 2148 9337

W | www.bostonacademy.com

ELS Language Centres Malaysia

T | 03 7958 8530

E | Info@els.edu.my

W | www.els.edu.my

Erican Language Centre

W | www.erican.edu.my

Institut Bahasa Teikyo - IBT - Teikyo
Malaysia Japanese Language Institute

T | 03 2272 5311

F | 03 2272 5322

W | www.teikyo.com.my

Inter-Cultural Language School - ICLS

T | 03 2144 2060

F | 03 2144 1850

W | www.icls.com.my

International House Malaysia
- English Language School

W | www.ih-malaysia.com

Young Men Christian Association
(YMCA)

T | 03 22741439

W | www.ymca.net

3 Security Companies

SELANGOR / WILAYAH PERSEKUTUAN

Guardwell Security Services Sdn. Bhd.

T | 03 2142 4492

Management Sdn. Bhd.

Teguh Guard Sdn. Bhd.

T | 03 6259 2009

Metro Security Services Sdn. Bhd
Kris Force

T | 03 3371 5983

F | 03 3372 8818

W | www.krisforce.com.my

Pernas International Security

T | 03 2698 8888

Safeguards Securicor Sdn. Bhd.

T | 03 7955 3633

Secom

T | 03 7846 7878

F | 03 7845 9668

W | www.secom.com.my

Secure Guards

T | 03 6137 9577

F | 03 6137 9575

Securicor

W | www.securicor.com/my

Securiteam Protection services Sdn. Bhd.

T | 03 4044 5007

4 Real Estate Agencies

SELANGOR / WILAYAH PERSEKUTUAN

Acmar International Group

T | 03 3343 8833

E | enquiry@acmar.com

W | www.acmar.com

Acquire Properties

T | 03 2073 3621

H | 017-888-7621

Adpost.com / Homes & Offices

W | www.adpost.com/my/
homes_offices/

Aip Cheong Real Estate Agency

W | www.aipcheong.com

Asiana Properties

T | 03 2274 9571

E | asiana@pc.jaring.my

W | www.asianaproperties.com

Bernard Realty

T | 03 2300 8633

E | info@bernardrealty.com.my

W | www.bernardrealty.com.my

Carey Real Estate

T | 03 6203 3399

F | 03 62014766

Catalina-Villa Kuala Lumpur /
Klang Valley

W | catalinavilla.tripod.com

C H Williams

T | 03 2693 8888

F | 03 2693 6565

W | www.reapfield.com

C H Williams

T | 03 2693 8888

F | 03 2693 6565

W | www.reapfield.com

Colliers, Jordan Lee and Jaafar
Property Consultants, Malaysia

W | www.colliers.com.my

Colliers International Property Consultants

T | 03 7660 0220

E | cipc@collierskl.com.my

W | www.colliers.net.my

Country Heights

T | 03 2287 3873

F | 03 2693 6565

W | www.countrywide.com.my

Cyberia Smarthomes, Cyberjaya

T | 03-8318 0290

W | www.cyberia.com.my

Desa Millennia Community

W | www.desamillennia.com

Dijaya Corporation Berhad

T | 03 7710 1018

W | www.dijayacorp.com

EmasOnline.com

W | www.emasonline.com

Eonprop.com

W | www.eonprop.com

Firdaus & Associates Property
Professionals

T | 03 4108 6650

W | www.fapp.com.my

Golden Hope Properties

T | 03 8739 9339

W | www.ghdsb.com

Hartamas Real Estate Sdn. Bhd.

T | 03 7803 5555

E | info@hartamas.com

W | www.hartamas.com

SELANGOR / WILAYAH PERSEKUTUAN

JL Asia Pacific

☎ | 03 9173 9373
✉ | jlapac@tm.net.my

Khong & Jaafar Real Estate

☎ | 03 2282 9699
☎ | 03 2282 9799

Kiara Realty

☎ | 03 2093 7777
☎ | 03 2093-8319

MegaHarta

☎ | 03 6201 1770
✉ | hartamas@megaharta.com

Meridian Properties

☎ | 03 4257 2876

Property Link

☎ | 03 2282 1088
✉ | info@propertylink.com.my
🌐 | www.propertylink.com.my

Reapfield Properties

☎ | 03 7728 6230
☎ | 03 7729 0893

Resource Realty

☎ | 03 7727 3539
☎ | 03 7727 7160

Susan Realty

☎ | 03 457 1739
☎ | 03 457 8881

Zerin Properties

☎ | 03 2092 2008
✉ | info@zerinproperties.com
🌐 | www.zerinproperties.com

JOHOR

Bandar Nusajaya

☎ | 07 241 1800
✉ | info@nusajayacity.com
🌐 | www.nusajaya.net

MIRI

Carey Real Estate

☎ | 085 425 262
☎ | 085 425 263

PENANG

Apartment For Sale, Penang, Malaysia

☎ | 04 288 6060
✉ | info@penang-property.com
🌐 | www.success88.com/
penangproperties.com

Belleview Group of Companies

☎ | 04 229 1999
🌐 | www.belleview.com.my

Carey Real Estate

☎ | 04 210 6366
☎ | 04 210 6366

Century Properties, Penang

🌐 | www.centuryprop.com

5 Accommodation Costs

RENTAL ACCOMMODATION SELANGOR / WILAYAH PERSEKUTUAN

Furnished, (RM per month)		Bangsar / Damansara Heights	Kenny Hills / Bukit Tunku	Sri Hartamas / Mont Kiara	Petaling Jaya / Subang Jaya
Houses	(Bungalow)	10,000 - 15,000	10,000 - 28,000	10,000 - 15,000	5,000 - 10,000
	(Dbl Semi-D terrace)	6,000 - 8,000	N / A	4,000 - 6,000	2,500 - 8,500
	(Terrace)	2,500 - 3,500	N / A	2,000 - 3,000	1,500 - 2,500
Apartments (Condominium)	(1 bedroom)	1,600 - 3,000	1,500 - 2,200	1,000 - 1,500	1,000 - 1,500
	(2 bedrooms)	2,500 - 6,500	3,800 - 6,000	4,500 - 6,000	1,900 - 3,200
	(3 bedrooms)	3,500 - 15,000	5,000 - 15,000	8,000 - 15,000	2,700 - 8,500

Source: Jones Lang Wootton / Colliers, Jordan Lee & Jaafar Sdn Bhd

6 Serviced Apartments

SELANGOR / WILAYAH PERSEKUTUAN

<p>Crown Regency T 03 2162 3888 E crsa.kul@crown-hotelresorts.com W www.crownregency.com.my</p> <p>Duta Vista Executive Suites T 03 2095 2020 W www.myresortnetwork.com/</p> <p>KL Plaza Suites W www.berjayaresorts.com.my</p> <p>Lanson Place T 03 4253 2888 W www.lansonplace.com.my</p> <p>Micasa Hotel Apartments T 03 21798000 W www.micasahotels.com</p>	<p>PNB DarbyPark T 03 7490 3333 W www.apartmentsmalaysia.net</p> <p>Putra Court Condominiums T 03 4043 4539, F 03 4042 7112</p> <p>Reapfield Propeties T 03 7728 6230 W www.reapfield.com.my</p> <p>Seasons Tower T 03 2148 2888 F 03 2148 1889 W www.mycen.com.my/malaysia/hotel</p> <p>SuCasa Service Apartments T 03 4251 3833 W www.sucasahotel.com</p>
---	---

SELANGOR / WILAYAH PERSEKUTUAN

<p>SuiteStay 📞 03 2164 8000 🌐 www.suitestay.com.my</p> <p>The Ascott Group 📞 03 2142 6868 🌐 www.ascottkualalumpur.com</p> <p>The Maple Suite 📞 03 2026 3333 🌐 www.themaplesuite.com</p>	<p>UBN Apartments 📞 03 2079 3296 🌐 ubn@ubntower.com.my</p> <p>Vistana Apartments 📞 03 4041 3743</p>
---	---

OTHERS STATES

<p>Langkawi Aseania Resort Langkawi 📞 04 955 2020 🌐 www.langkawi-hotel.com/aseania.htm</p> <p>Negeri Sembilan PD World Marina Resort, 📞 06 662 6367</p> <p>Pahang ColmarTropicale, 📞 1800 80 7706 🌐 www.berjayaresorts.com/colmar-tropicale/info.html 🌐 www.renaissance-kul.com</p>	<p>Penang Vistana 📞 04 646 8000</p> <p>Sarawak The Ascott 📞 082 250958 🌐 www.ascottkualalumpur.com</p>
---	--

7 Hotels

Average published room rates in:

LOCATION	SINGLE/DOUBLE RM PER NIGHT
Kuala Lumpur	
5-Star Hotel	750
4-Star Hotel	400
3-Star Hotel	250

Average published room rates in:

LOCATION	SINGLE/DOUBLE RM PER NIGHT
Penang	
5-Star Hotel	700
4-Star Hotel	400
3-Star Hotel	280
Langkawi	
5-Star Hotel	715
4-Star Hotel	578
3-Star Hotel	220

List of Hotels

KUALA LUMPUR (Five star)

Carcosa Seri Negara

T | 03 2282 1888

W | www.carcosa.com.my

Crown Princess Hotel

T | 03 2162 5522

W | crownprincess.com.my

Grand Maya Hotel

T | 03 2711 8866

W | www.hotelmaya.com.my

Grand Plaza Parkroyal Hotel

T | 03 2142 5588

W | www.kualalumpur.parkroyalhotels.com

Hilton Kuala Lumpur

T | 03 2264 2264

W | www.kuala_lumpur.hilton.com

Hotel Equatorial

T | 03 2161 7777

W | www.equatorial.com

Hotel Nikko

T | 03 2161 1111

W | www.hotelnikko.com.my

Istana Hotel

T | 03 2141 9988

W | www.hotelistana.com.my

JW Marriott Hotel

T | 03 2715 9000

W | www.ytlhotels.com

Le Meridien Hotel

T | 1 800 80 60 79

W | www.starwoodhotels.com

Legend Hotel

T | 03 4042 9888

W | www.legendsgroup.com

Mandarin Oriental

T | 03 2380 8888

W | www.mandarinoriental.com

Mines Beach Resort and Spa Malaysia

T | 03 8943 6688

W | mbr.mines.com.my

Pan Pacific Hotel

T | 03 8787 3333

W | www.panpacific.com

List of Hotels

KUALA LUMPUR (Five star)

Prince Hotel and Residence

📞 | 03 2170 8888

🌐 | www.princehotelkl.com.my

Regent Hotel

📞 | 03 2141 8000

🌐 | www.regenthotels.com

Renaissance Hotel

📞 | 03 2162 2233 / 03 2163 6888

🌐 | www.renaissances-kul.com

Shangri-La Hotel

📞 | 03 2032 2388

🌐 | www.shangri-la.com

Sheraton Imperial

📞 | 03 2717 9900

🌐 | www.luxurycollection.com/kualalumpur

The Ritz Carlton

📞 | 03 2142 8000

🌐 | www.ritzcarlton.com

Westin Hotel

📞 | 03 2731 8333

🌐 | www.westin.com/kualalumpur

OTHERS STATES (Five star)

Selangor

Cyberview Lodge Resort and Spa

📞 | 03 8312 7000

🌐 | www.cyberview-lodge.com

Equatorial Bangi

📞 | 03 8210 2222

🌐 | www.equatorial.com

Hilton Petaling Jaya

📞 | 03 7955 9122

🌐 | www.hilton.com

Johor Bahru

Hyatt Regency Johor Bahru

📞 | 07 222 1234

🌐 | www.johorbahru.regency.hyatt.com

Mutiara Johor Bahru

📞 | 07 332 3800

🌐 | www.mutiarahotels.com

Langkawi

Pelangi Beach Resort and Spa

Langkawi

📞 | 04 952 8888

🌐 | www.pelangi-beachresort.com

Sheraton Langkawi Beach Resort

📞 | 04 955 1901

🌐 | www.sheraton/langkawi.com

The Andaman Datai Bay

📞 | 04 959 1088

🌐 | www.ghmhotels.com

The Datai Langkawi

📞 | 04 959 2500

🌐 | www.ghmhotels.com

Melaka

Equatorial Hotel Melaka

📞 | 06 282 8333

🌐 | www.equatorial.com/mel/

Renaissance Melaka

📞 | 06 284 8888

🌐 | www.renaissance-melaka.com

List of Hotels

OTHERS STATES (Five star)

Pahang

Genting Hotel

☎ | 03 2718 1118

🌐 | www.genting.com.my

Penang

Eastern & Oriental Hotel, Penang

☎ | 04 263 0630

🌐 | www.e-o-hotel.com

Equatorial Penang

☎ | 04 643 8111

🌐 | www.equatorial.com

Perak

Pangkor Laut Resort, Perak

☎ | 05 699 1100

🌐 | www.pangkorlautresort.com

Sabah

Nexus Golf Resort Karambunai, Sabah

☎ | 088 411 222

🌐 | www.nexusresort.com

Sutera Harbour Resort and Spa, Sabah

☎ | 088 318 888

🌐 | www.suteraharbour.com

Sarawak

Hilton Kuching, Sarawak

☎ | 082 248 200

🌐 | www.kuching.hilton.com

Terengganu

Awana Kijal Golf and Beach Resort,
Terengganu

☎ | 09 864 1188

🌐 | www.awana.com.my

SELANGOR (FOUR STAR)

AnCasa Hotel

☎ | 03 2026 6060

🌐 | www.ancasa-hotel.com

Concorde Hotel

☎ | 03 2144 2200

🌐 | www.concorde.net

Dorsett Regency

☎ | 03 2715 1000

🌐 | www.dorsettregency.com.my

Dynasty Hotel

☎ | 03 4043 7777

🌐 | www.dynasty.com.my

Eastin Hotel

☎ | 03 7665 1111

🌐 | www.eastin.com

Federal Hotel

☎ | 03 2148 9166

🌐 | www.federalhotel.com

Hotel Armada

☎ | 03 7954 6888

🌐 | www.armada.com

Hotel Capitol

☎ | 03 2143 7000

🌐 | www.capitol.com.my

Hotel Malaysia

☎ | 03 2142 8033

☎ | 03 2144 7733

Mandarin Court Hotel

☎ | 03 2273 9933

🌐 | www.mandarin-court-hotel.com.my

Mandarin Hotel KL

☎ | 03 2070 3000

☎ | 03 2070 4363

List of Hotels

SELANGOR (FOUR STAR)

Marriott Putrajaya

T | 03 8949 8888

F | 03 8949 8999

W | www.marriottputrajaya.com

Melia Kuala Lumpur

T | 03 2142 8333

W | www.solmelia.com

Mines Beach Resort and Spa

T | 03 8943 6688

W | www.countryheights.com.my

Nova Hotel KL

T | 03 2143 1818

F | 03 2142 9985

W | www.novahtl.com

Novotel Century KL

T | 03 2143 9898

F | 03 2413 9558

Pacific Regency Hotel

T | 03 2026 2211

W | www.pacific-regency.com

Palace of The Golden Horses KL

T | 03 8943 2333

F | 03 8943 2666

W | <http://pgh.mines.com.my>

Palm Garden Hotel, IOI Resort

T | 03 8943 2233

F | 03 8943 1122

W | www.palmgarden.com.my

Pan Pacific KLIA, The

T | 03 8787 3333

F | 03 8787 5555

W | <http://klairport.panpacific.com>

Renaissance Palm Garden

T | 03 8943 2233

F | 03 8943 1122

Ritz-Carlton, The KL

T | 03 2142 8000

F | 03 2143 8080

W | www.ytlcommunity.com/ritzcarltonkl/

Royal Bintang Hotel

T | 03 2143 9898

W | www.royal-bintang-hotel.com.my

Seri Pacific KL (formerly Pan Pacific KL)

T | 03 4042 5555

F | 03 4041 7236

W | www.kl-hotels.com/panpacific

Shangri-La Putrajaya

T | 03 8887 8888

F | 03 8887 8889

W | www.shangri-la.com/

Sheraton Subang

T | 03 5031 6060

F | 03 5031 8686

Sunway Lagoon Resort Hotel PJ

T | 1 800 828 888 / 03 7492 8000

F | 03 7492 8001

W | www.sunway.com.my/hotel/index.html

Swiss Garden Hotel

T | 03 2141 3333

W | www.swissgarden.com

The Legend Hotel

T | 03 4042 9888

F | 03 4043 0700

W | www.legendsgroup.com

The Maple Suite

T | 03 2026 3333

W | www.TheMapleSuite.com

List of Hotels

SELANGOR (FOUR STAR)

The Pan Pacific Glenmarie

T | 03 7803 1000

W | www.glenmarie-kl.panpac.com

The Summit Hotel, Subang UEP &
Bukit Mertajam

T | 03 8023 3000

F | 03 8023 2233

W | www.summithotel.com.my

OTHER STATES (FOUR STAR)

Johor

Pan Pacific, JB

T | 07 223 3333

F | 07 223 6622

W | www.panpac.com/

Tanjong Puteri Golf Resort, Johor

T | 07 271 1888

W | www.tanjongputerigolf.com

The Zon Regency Hotel By The Sea,
JB (formerly Eden Garden Hotel Johor Bahru)

T | 1 800 880 500 / 07 221 9999

F | 07 221 0999

W | www.zonhotel.com.my

Kedah

Mutiara Pedu Lake

T | 04 730 4888

F | 04 730 4488

W | www.pedulakeresorts.com

Kelantan

Perdana Hotel, Kelantan

T | 09 748 5000

W | www.hotelperdana.com.my

Renaissance Kota Bharu

T | 09 746 2233

F | 09 746 1122

Langkawi

Lanai Langkawi Beach Resort

T | 04 955 2262

F | 04 955 8459

W | www.lanaibeach.com.my

Langkawi Holiday Villa

T | 04 955 1701

W | www.holidayvilla.com.my

Langkawi Village Resort

T | 04 955 1511

F | 04 955 1531

W | www.langkawi-villageresort.com

Mutiara Burau Bay

T | 04 959 1061

F | 04 959 1172

Rebak Marina Resort, Langkawi

T | 04 966 9960

W | www.rebakmarina.com

Melaka

Century Mahkota Hotel, Melaka

T | 06 281 2828

W | www.centuryhotel.com

Shah's Beach Resort

T | 06 315 3121

F | 06 315 2088

W | www.shahsresorts.com

List of Hotels

OTHER STATES (FOUR STAR)

Negeri Sembilan

Allson Klana Resort, Seremban

T | 06 7627888

W | www.allsonklana.com.my

Palm Springs Resort PD

T | 06 661 9888

F | 06 661 9988

The Regency Hotel and Resort,
Port Dickson

T | 06 647 4090

W | www.theregencyhotel.com

Pahang

Lakehouse Hotel Cameron Highlands

T | 05 495 6152

F | 05 495 6213

W | www.lakehouse-cameron.com

Merlin Inn Resort Cameron Highlands

T | 05 4911211

F | 05 491 1178

Mutiara Taman Negara

T | 09 266 3500

F | 09 2661500

W | [www.mutiarahotels.com/
mutiara_tmnnegara/index.html](http://www.mutiarahotels.com/mutiara_tmnnegara/index.html)

Persona Island Resort

T | 09 513 5566

F | 09 513 0510

Puncak Inn

T | 09 362 2055

F | 09 362 2055

Quest Resort Fraser's Hill

T | 09 362 2300

F | 09 362 2284

Selesa Hillhomes & Golf Resort

T | 09 233 0039 / 09 233 0066

W | www.selesa.com.my

Suria Cherating Beach Resort

T | 09 581 9898

F | 09 581 9797

W | www.suriacherating.com/

Strawberry Park Resort Cameron
Highlands

T | 05 491 1166

F | 05 491 1949

Summerset Colonial Hotel and Villas,

T | 09 414 1888

W | www.summerset.com.my

Ye Olde Smoke House Fraser's Hill

T | 09 362 2226

F | 09 362 2035

Penang

Hotel Malaysia

T | 04 2633311

F | 04 2631621

W | www.hotelmalaysia.com.my

Mutiara Beach Resort

T | 1 800 88 3838 / 04 886 8888

F | 04 885 2829

W | www.penang-mutiara.com.my

Northam All Suite Hotel

T | 04 370 1111

F | 04 370 2222

W | www.northam-hotel.com.my

Paradise Hotel Sandy Bay

T | 04 899 9999

F | 04 899 0000.

W | [www.geocities.com/
~paradise_hotel](http://www.geocities.com/~paradise_hotel)

Penang Parkroyal Resort

T | 04 881 1133

W | www.penang.parkroyalhotel.com

List of Hotels

OTHER STATES (FOUR STAR)

Persona Island Resort

☎ | 09 513 5566

☎ | 09 513 0510

Rasa Sayang Resort

☎ | 04 881 1811

☎ | 04 881 1984

🌐 | www.shangri-la.com

Selesa Hillhomes & Golf Resort

☎ | 09 233 0039 / 09 233 0066

🌐 | www.selesa.com.my

Shangri-La's Golden Sands Resort

☎ | 04 881 1911

🌐 | www.shangri-la.com

Shangri-La

☎ | 04 262 2622

☎ | 04 262 6526

🌐 | www.shangri-la.com

Perak

Casuarina Parkroyal, Ipoh

☎ | 05 255 5555

🌐 | www.impiana.com

Majestic Station Hotel Ipoh

☎ | 05 255 5605

☎ | 05 255 3393

🌐 | www.majesticstationhotel.com

Pan Pacific Pangkor Island, The

☎ | 05 685 1091

☎ | 05 685 1852

🌐 | www.panpac.com

Pangkor Island Beach Resort

☎ | 05 685 1091

☎ | 05 685 1852

🌐 | www.pangkorislandbeach.com

Swiss Garden Damai Laut Resort & Spa Lumut

☎ | 05 684 3333

☎ | 05 618 3388

🌐 | www.damailaut.com

The Syuen Hotel, Ipoh

☎ | 05 253 8889

🌐 | www.syuenhotel.com

Sabah

Layang Layang Island Resort

☎ | 03 21622877

☎ | 03 21622980

🌐 | www.layanglayang.com

Perkasea Hotel Mount Kinabalu

☎ | 088 88 9511

☎ | 088 889101

🌐 | www.perkasahotel.com.my

Promenade Hotel Sabah

☎ | 088 265 555

🌐 | www.promenade.com.my

Pulau Tiga Resort

☎ | 088 24 0584

🌐 | www.pulau-tiga.com/

Sepilok Nature Resort

🌐 | www.sepilok.com/

Sipadan Water Village Resort

🌐 | www.sipadan-village.com.my

Shangri-La Hotel KK

☎ | 088 21 2800

🌐 | www.kkshang.com.my

Tanjung Aru Resort KK

☎ | 088 225 800

☎ | 088 217 155

🌐 | www.shangri-la.com

List of Hotels

OTHER STATES (FOUR STAR)

Sarawak

Holiday Inn Kuching

☎ | 082 423 111

🌐 | www.holidayinn-sarawak.com

Holiday Inn Resort Damai Beach

☎ | 082 846 999

🌐 | www.holidayinn-sarawak.com

Merdeka Palace Hotel & Suites

☎ | 082 25 8000

☎ | 082 42 5400

🌐 | www.merdekapalace.com

ParkCity Beverly Hotel

☎ | 086 31 8888

☎ | 086 31 8899

🌐 | www.valuehospitality.com

Somerset Gateway Kuching

☎ | 082 25 0958

☎ | 082 25 9958

🌐 | www.somersetgatewaykuching.com

Terengganu

Berjaya Tioman Beach Resort, Mersing

☎ | 09 419 1000

🌐 | www.berjayaresorts.com

Laguna Redang Island Resort

Pasir Panjang, Redang Island

☎ | 09 630 7888

☎ | 09 630 7878

🌐 | www.lagunaredang.com.my

Primula Beach Resort

☎ | 09 622 2100

🌐 | www.primulahotels.com.my

Redang Beach Resort

☎ | 09 623 8188

☎ | 09 623 0225

🌐 | www.redang.com.my

Tanjong Jara Resort Terengganu

☎ | 03 2145 9000

🌐 | www.tanjongjararesort.com

8 Office Rental

The following rates are approximate rentals (gross) per sq. meter per month inclusive of service charge.

LOCATION	RM/PER SQ. METRE/PER MONTH
Alor Setar, Kedah	15.00 – 25.00
Georgetown, Penang	16.00 – 32.29
Ipoh, Perak	13.00 – 19.00
Johor Bahru, Johor	15.00 – 27.00
Kuala Lumpur	30.00 – 165.00
Kuala Terengganu, Terengganu	21.30 – 24.50
Kuantan, Pahang	7.50 – 27.00

LOCATION**RM/PER SQ. METRE/PER MONTH**

Kuching, Sarawak	18.00 – 30.00
Kota Bahru, Kelantan	9.50 – 35.50
Kota Kinabalu, Sabah	15.00 – 27.00
Melaka	10.00 – 25.00
Petaling Jaya, Selangor	26.00 – 52.00
Seremban, Negeri Sembilan	16.00 – 26.91

Source: *Colliers Jordan Lee & Jaafar*
CH Williams Talhar & Wong

CONTACTS**LOCATION****Johor**

Elite Management Centre

☎ | 07 386 3033

Penang

Fortune Era (M) Sdn Bhd

☎ | 04 229 1811

Amplimax Sdn Bhd

☎ | 04 642 6318

Sarawak

Business Card Centre

☎ | 082 46 1330

Selangor / Wilayah Persekutuan

Alpha Executive Business Center Sdn Bhd

☎ | 03 7957 8518

CEO SUITE

🌐 | www.ceosuite.com

Goldhill Business Centre

☎ | 03 2032 1122

Kris Business Centre

☎ | 03 7955 3539

Mont'Kiara Business Centre

W www.sunrise.com.my/mkbc

Partners Corporate Advisors Sdn Bhd

☎ | 03 6203 4430

☎ | 03 6203 4429

✉ | office@partners-corp.com

🌐 | www.partners-corp.com

Plaza Business Centre

☎ | 03 2142 1111

Regus, Kuala Lumpur

☎ | 03 2142 1111

🌐 | www.regus.com

Servcorp

🌐 | www.servcorp.net

Signature Office Suites, Kuala Lumpur

☎ | 03 2719 5555

🌐 | www.signatureservicedoffices.com

121office : Office Space in Malaysia

🌐 | www.121office.com

9 Packers and Movers

SELANGOR / WILAYAH PERSEKUTUAN

AGS Movers Malaysia Sdn. Bhd.

- 📞 enquiry@agsmoversmalaysia.com
- 🌐 www.agsmoversmalaysia.com

Allied Movers

- 📞 03 6272 4730
- 🌐 www.aliedmovers.com

Allied Pickfords (M) Sdn. Bhd.

- 📞 03 6275 6553
- 📞 03 6275 5404

Allied Pickford

- 📞 03 6253 6553
- 🌐 www.alliedpickfords.com.my

Ambassador Worldwide Movers (M) Sdn Bhd

- 📞 03 223 9100
- 📞 03 223 9300

Asian Tigers

- 📞 03 9222 9688
- 🌐 www.asiantigers-malaysia.com

Atlantic Container Lines

- 📞 03 3324 0012
- 🌐 www.atlantic.com.my

BW Worldwide Movers

- 📞 03 6258 7573
- 📞 03 6252 7863
- 📧 bw movers@tm.net.my

Cendant Mobility

- 🌐 www.cendantmobility.com

City-Link Air Cargo Sdn. Bhd.

- 📞 03 8023 1236
- 🌐 www.cse.com

Continental Movers and Transport

- 📞 03 5569 1803
- 🌐 www.continentalmovers.com.my

Freight Logistics Corp Sdn. Bhd.

- 📞 03 3342 2670
- 🌐 www.thefreightgroup.com

Inter Grace Movers (M) Sdn. Bhd.

- 📞 03 7954 4908
- 📞 03 7954 4910

E move@intergrace.com.my

- 🌐 www.intergrace.com.my

Interdean.Interconex

- 📞 03 2164 1866
- 🌐 www.interdeaninterconex.com

K.C. Dat Sdn. Bhd.

- 📞 03 5511 2611
- 📞 03 5511 2622

Putrapack Movers

- 📞 03 6157 1442
- 🌐 www.putrapack.com

Royal Relocations

- 📞 03 6120 8903
- 📞 03 6120 8906
- 📧 admin@royalrelocations.com
- 🌐 www.royalrelocations.com

Subalipack International

- 📞 03 9171 2500
- 🌐 www.subalipack.com

Transpro

- 📞 03 9222 9688
- 🌐 www.asiantigers-malaysia.com

EXPATRIATE RELOCATION SERVICE SELANGOR / WILAYAH PERSEKUTUAN

Cendant Mobility

W | www.cartus.com

Crown Worldwide Group

W | www.crownworldwide.com

Expatriate Property Information
Consultancy (EPIC International)

E | epic.international@virgin.net

Interdean.Interconex

W | www.interdean.com

Malaysian Van Lines

T | 03 5636 5713

F | 03 5636 5716

Masson Relocation Management

T | 03 7958 6652

F | 03 7956 9318

E | contactus@massongroup.com

Prudential Relocation International

W | www.prudential.com

Santa Fe Relocation Services Sdn. Bhd.

T | 03 7805 4322

F | 03 7805 3766

Straits Express (M) Sdn. Bhd.

T | 03 5634 6041

F | 03 5634 6064

Transpo Movers (M) Sdn. Bhd.

T | 03 9222 9688

F | 03 9222 9788

PENANG

Pathfinder Relocation Services (PRS)

T | 04 890 3758

F | 04 890 3884

E | pathfinders@pd.jaring.my

10 Pest Control Companies

SELANGOR / WILAYAH PERSEKUTUAN

AntiPest Management Services (M)
Sdn. Bhd.

T | 03 5638 3838

F | 03 5634 7779

W | www.antipest.com.my

James White Ants Destroying Sdn. Bhd.

T | 03 7783 30

E | jwad@jameswhiteants.com.my

Malaysian Pest Control Sdn. Bhd.

T | 03 4257 7401

E | mpctrl@po.jaring.my

Pied Piper Sdn. Bhd.

T | 03 5633 3744

Rentokil Initial (M) Sdn. Bhd.

T | 03 7729 5322

E | kleastpc@rentokil-initial.com.my

Ridpest - Pest control services

T | 1800 881 777

W | www.ridpest.com/

Scientific Pest Management (M)
Sdn. Bhd.

T | 03 4275 0800

Wood Pecker (M) Sdn. Bhd.

T | 03 5637 1001

W | www.woodpecker.com.my

11 Postal and Courier Services

SELANGOR / WILAYAH PERSEKUTUAN

ABX Express (M) Sdn. Bhd.

☎ | 03 2691 6718

🌐 | www.abxexpress.com.my

City-Link Express (M) Sdn. Bhd.

🌐 | www.citylinkexpress.com

City-Link Global Network

☎ | 03 5033 3800

🌐 | www.citylinkexpress.com/

FedEx Express Services (M) Sdn. Bhd.

☎ | 1 800 88 6363

🌐 | www.fedex.com/my

GD Express

☎ | 03 7787 6668 / 7787 6677 /
7787 6688

🌐 | www.gdexpress.com

Johor Bahru

☎ | 07 338 1008 / 07 335 5837 /
07 221 5578

Kedah

☎ | 04 731 2597 / 04 734 3423 /
04 734 9636

Kelantan

☎ | 09 743 1800

Kuala Lumpur

☎ | 03 9221 2669

Labuan

☎ | 087 414 611 / 087 414 161

Langkawi

☎ | 04 967 1680

Melaka

☎ | 06 284 5843 / 06 281 8033

Nationwide Express

☎ | 03 5512 7000

🌐 | www.nationwide2u.com

Negeri Sembilan

☎ | 06 767 1122 / 06 761 3228 /
06 767 0121

Pahang

☎ | 09 514 1700 / 09 512 1121 /
09 512 1066

Penang

☎ | 04 281 3333 / 04 397 4177 /
04 398 3930

Perak

☎ | 05 529 0980 / 05 21438808 /
05 241 6678

Poslaju (M) Sdn. Bhd.

☎ | 03 2263 2626

🌐 | www.pos.com.my

Sabah

☎ | 088 224 000 / 088 236 626 /
088 247 172

Sarawak

☎ | 082 237 879 / 082 486 888 /
082 425 688 / 03 7787 6688

Selangor

☎ | 03 7876 3666 / 03 5569 2188

Sure-Reach Worldwide Express

☎ | 03 7781 8188

🌐 | www.sure-reach.com

Terengganu

☎ | 09 666 2854 / 09 623 3531 /
09 620 3006

TNT Express Worldwide (M) Sdn. Bhd.

☎ | 03 5569 1951

🌐 | www.profitera.com

United Parcel Service (M) Sdn. Bhd.
(UPS)

☎ | 03 7784 1233

🌐 | www.ups.com

12 Transportation Operators

RAIL

SELANGOR / WILAYAH PERSEKUTUAN

Express Rail Link Sdn. Bhd. (ERL)

☎ | 03 2267 7777

🌐 | www.kliaekspres.com

Keretapi Tanah Melayu (KTM),
Commuter train

☎ | 03 2267 1200

🌐 | www.ktmb.com.my

Kuala Lumpur International Airport
(KLIA)

☎ | 03 2267 6000

🌐 | www.kliaekspres.com

Monorail

☎ | 03 2267 9888

🌐 | www.monorail.com.my

Putra Light Rail Transit Sdn. Bhd.

☎ | 1 800 38 8228

🌐 | www.rapidkl.com.my

Star LRT Sdn. Bhd.

☎ | 03 4294 2550

🌐 | www.rapidkl.com.my

TAXI

SELANGOR / WILAYAH PERSEKUTUAN

Airport Limo & Taxi Service

☎ | 03 9223 8080 / 03 9223 8949
(Booking Centre)

☎ | 03 8787 3675 (KLIA Counter)

Comfort

☎ | 03 8024 2727

Comfort Taxi

☎ | 03 2692 2525

Hotline Radio Taxi

☎ | 03 255 3399

KL Teksi

☎ | 03 9221 9999

Mesra Cab

☎ | 03 4043 0659

Oriental Radio Taxi

☎ | 03 2694 4718

Public Cab

☎ | 03 6259 2020

Saujana Teksi

☎ | 03 2162 8888

Sunlight

☎ | 03 9058 9986

Supercab

☎ | 03 2095 3399 / 03 7875 7333

Teletaxi

☎ | 03 9221 1011

UpTown Ace SuperCab (Yellow Cab)

☎ | 03 9283 2333

AIRLINES OPERATING IN MALAYSIA

AIRLINE

SABAH

Sabah Air

☎ | 088 256 733

🌐 | www.sabahair.com.my

SARAWAK

Hornbill Skyways

☎ | 082 455 737

Layang Layang

☎ | 03 2162 2877

🌐 | www.layanglayang.com

SELANGOR / WILAYAH PERSEKUTUAN

AirAsia

☎ | 03 8775 4000

🌐 | www.airasia.com

Malaysian Helicopter Services (MHS)

☎ | 03 7729 1176

🌐 | www.mhsaviation.com

Berjaya Air

☎ | 03 7846 8228

🌐 | www.berjaya-air.com

Mofaz Air

☎ | 03 7729 3201

🌐 | www.mofaz.com

Malaysia Airlines

☎ | 1 300 88 3000

🌐 | www.malaysiaairlines.com

FOREIGN AIRLINES

SELANGOR / WILAYAH PERSEKUTUAN

Air India

☎ | 03 2142 0166

🌐 | www.alloexpat.com

Austrian Airlines

☎ | 03 2148 8033

🌐 | www.australiaairlines.com

Air Mauritius

☎ | 03 2142 9161

🌐 | www.airmauritius.com.my

Cathay Pacific Airways

☎ | 03 2078 3377

🌐 | www.cathaypacific.com

All Nippon Airways

☎ | 03 2032 1331

🌐 | www.ana.co.jp

China Airlines

☎ | 03 2142 7344

🌐 | www.china-airlines.com

FOREIGN AIRLINES

SELANGOR / WILAYAH PERSEKUTUAN

Garuda Indonesia

☎ | 03 2162 2811

🌐 | www.garuda-indonesia.com

Gulf Air

☎ | 03 2141 2676

🌐 | www.alloexpat.com

Iran Air

☎ | 03 2161 0411

🌐 | www.azfreight.com

Jet Airways

☎ | 03 2148 9020

🌐 | www.jetairways.com

Korean Airlines

☎ | 03 2142 8311

🌐 | www.koreanair.com

Lion Airlines

☎ | 03 2713 9911

🌐 | www.lionair.co.id

Lufthansa

☎ | 03 2052 3428

🌐 | www.lufthansa-malaysia.com

Merpati

☎ | 03 2146 2043

🌐 | www.merpati.co

Myanmar Airways International (MAI)

☎ | 03 2148 7555

🌐 | www.maiair.com

Pakistan International Airlines (PAL)

☎ | 03 2142 5444

🌐 | www.piac.com

Philippine Airlines

☎ | 03 2141 0767

🌐 | www.philippineairplane.com

Qatar Airlines

☎ | 03 2142 5444

🌐 | www.qatarairways.com

Royal Brunei Airlines (RBA)

☎ | 03 2070 7166

🌐 | www.bruneair.com

Royal Dutch Airlines (KLM)

☎ | 03 2711 2300

🌐 | www.klm.com.my

Singapore Airlines (SIA)

☎ | 03 2692 3122

🌐 | www.singaporeair.com

Shenzhen Airlines

☎ | 03 2171 2963

🌐 | www.shenzhenair.com/

Sri Lankan Airlines

☎ | 03 2072 3633

🌐 | www.srilankan.aero

Thai Airlines

☎ | 03 2031 2900

🌐 | www.orient-thai.com

Uzbekistan Airways

☎ | 03 2145 0997

🌐 | www.airways.uz

Vietnam Airlines

☎ | 03 2141 2416

🌐 | www.vietnamairlines.com

13 Car Rental and Leasing

SELANGOR / WILAYAH PERSEKUTUAN

Advantage Car Rentals

📞 03 2142 5855

🌐 www.advmsia.com.my

Avis

🌐 www.avis.com

📞 03 76282300

Enesty Hire And Drive Sdn Bhd

📞 03 7984 7535 (KL)

📞 037984 7536 (KL)

📞 03 8787 4075 (KLIA)

📞 03 8787 4076 (KLIA)

✉ enesty@pd.jaring.my

🌐 www.enesty.com.my/ehdsb

Hawk Rent A Car

📞 03 2164 6455

🌐 www.hawkrentacar.com/malaysia.shtml

Hertz Malaysia

📞 03 2148 6433

🌐 www.hertz-malaysia.com

Johor

Lot PTB No.20708

Sultan Ismail Airport City Lounge

Terminal Bas Central Kotaraya

Jalan Trus, 80000

Johor Bahru

📞 07 224 3951 / 3952

Kuala Lumpur City Centre

47-G, The Boulevard

Mid Valley City

Lingkar Syed Putra

59200, Kuala Lumpur

Kuala Lumpur International Airport (KLIA)

Arrival Hall

Kuala Lumpur International Airport

43900, Sepang

📞 03 8787 3922 / 4393

Mayflower

📞 03 6253 1888

🌐 www.mayflowercarrental.com.my

Nova Rentacar Reservations

🌐 www.rentacar-malaysia.com

Orix

📞 03 9284 7799

🌐 www.orix.com

Pacific Rent-A-Car

📞 03 2287 4118 / 4119

🌐 www.iprac.com

Pahang

Sultan Ahmad Shah Airport
26070, Kuantan

📞 09 539 8630 / 8631

Penang

Airport Counter, Arrival Hall
Penang International Airport
11900 Bayan Lepas

📞 04 643 8891

SMAS Rent A Car

📞 03 2080 5066

🌐 www.smasrac.com.my/

Sintat

📞 03 2145 7988

🌐 my.ksdb.com/186563.page

Thrifty

📞 03 2070 2591

🌐 www.thrifty.com

WS Rent-A-Car

📞 03 4256 6999

🌐 www.wsrenacar.com.my

PENANG

Popular Rent a Car

📞 | 04 657 6510

🌐 | www.mbesb.net/rentacar

SABAH

Aban-D Rent A Car Sdn. Bhd.

📞 | 088 722 600

🌐 | my.ksdb.com/185422.page

Adaras Rent A Car Sdn. Bhd.

📞 | 088 211 866

✉ | adarasrac@hotmail.com

E & C Tours & Car Rental Sdn. Bhd.

📞 | 088 239 996

🌐 | www.enctours.com

SARAWAK

AMI Car Rental Sdn. Bhd.

📞 | 082 579 679

Mayflower Acme Tours Sdn. Bhd.

📞 | 082 410 110

🌐 | www.mayflower.com.my

14 Hospitals

GOVERNMENT HOSPITALS (STATE)

Johor

Hospital Sultanah Aminah

Kedah

Hospital Alor Setar

📞 | 04 730 3333

Kelantan

Hospital Kota Bahru

📞 | 09 748 5533

Negeri Sembilan

Hospital Seremban

📞 | 06 762 3333

Melaka

Hospital Melaka

📞 | 06 282 2344

Pahang

Hospital Tengku Ampuan Afzan

📞 | 09 513 3333

Perak

Hospital Ipoh

📞 | 05 253 3333

Pulau Pinang

Hospital Pulau Pinang

📞 | 04 229 3333

Sabah

Hospital Queen Elizabeth

📞 | 088 218 166

Hospital Wilayah Persekutuan Labuan

📞 | 087 412 212

Sarawak

Hospital Kuching

Selangor

Hospital Serdang

📞 | 03 8947 5555

Hospital Tengku Ampuan Rahimah

📞 | 03 332 3333

GOVERNMENT HOSPITALS (STATE)

Terengganu

Hospital Kuala Terengganu

☎ | 09 623 3333

Wilayah Persekutuan

Hospital Besar Kuala Lumpur

☎ | 03 2691 5555

Hospital Putrajaya

☎ | 03 8888 0080

Institut Perubatan Respiratori

☎ | 03 4023 2966

PRIVATE HOSPITALS (STATE)

Johor

Hospital Pakar Johor

☎ | 07 223 7811

Hospital Pakar Puteri

☎ | 07 223 3377

Johor Specialist Hospital

☎ | 07 2237811

🌐 | www.geocities.com/jshjb/

Medical Specialist Centre (JB) Sdn. Bhd.

☎ | 07 224 3888

The Southern Hospital (Batu Pahat) Sdn. Bhd.

☎ | 07 413 3333

Kedah

INS Specialist and Maternity Centre

☎ | 04 731 8120

Kedah Medical Centre

☎ | 04 730 8878

Metro Specialist Hospital

☎ | 04 423 8888

Kelantan

Kota Bharu Medical Centre

☎ | 09 743 3399

Labuan

Labuan Medical Centre

☎ | 087 422 111

Melaka

Damai Medical and Heart Clinic Sdn. Bhd.

☎ | 06 284 1204

Hospital Pantai Ayer Keroh Sdn. Bhd.

☎ | 06 231 9999

Mahkota Medical Centre

☎ | 06 281 3333

The Southern Hospital Sdn. Bhd.

☎ | 06 283 5888

Negeri Sembilan

Columbia Asia Medical Center

☎ | 06 601 1988

Nilai Cancer Institute

☎ | 06 850 0999

Pahang

Kuantan Medical Centre Sdn. Bhd.

☎ | 09 514 2828

Kuantan Specialist Hospital Sdn. Bhd.

☎ | 09 567 8588

W.Y. Ko Specialist Maternity and Gynaecology Centre

☎ | 09 566 7805

Penang

Bukit Mertajam Specialist Hospital

☎ | 04 538 7577

Gleaneagles Penang

☎ | 04 227 6111

🌐 | www.gleaneagles-penang.com

Hope Children Clinic

☎ | 04 228 6557

Hospital Pantai Mutiara

☎ | 04 643 3888

Island Hospital

☎ | 04 228 8222

🌐 | www.islandhospital.com

Lam Wah Ee Hospital

☎ | 04 6571 888

🌐 | www.hlwe.com.my

PRIVATE HOSPITALS (STATE)

Loh Guan Lye Specialists Hospital

☎ | 04 2288501

🌐 | www.lohguanlye.com

Penang Adventist Hospital

☎ | 04 226 1133

🌐 | www.pah.com.my

Penang Specialist Maternity Centre

☎ | 04 228 2151

Perak

Hospital Fatimah

☎ | 05 545 5725

Hospital Pantai Putri

☎ | 05 548 4333

Ipoh Specialist Hospital

☎ | 05 241 8777

Sabah

Damai Specialist Centre Sdn. Bhd.

☎ | 088 222 922

Kota Kinabalu Specialist Centre

☎ | 088 252 500

Sabah Medical Centre Sdn. Bhd.

☎ | 088 424 333

Teo Maternity Home and Specialist
Gynaecological Surgery

☎ | 089 771 873

Sarawak

Columbia Asia Medical Center, Miri

☎ | 085 437 755

Normah Medical Specialist Centre

☎ | 082 440 055

Timberland Medical Centre

☎ | 082 234 466

Selangor

Ampang Puteri Specialist Hospital
Sdn. Bhd.

☎ | 03 4270 2500

Assunta Hospital

☎ | 03 77823433

🌐 | www.assunta.com.my

Damai Service Hospital Sdn. Bhd.

☎ | 03 4108 9900

Damansara Fertility Centre and
Damansara Women's Specialist
Centre

☎ | 03 7729 3199

Damansara Specialist Hospital

☎ | 03 77222692

🌐 | www.kpj.com.my

Hospital Pakar Damansara

☎ | 03 7722 2692

Hospital Universiti

Kebangsaan Malaysia

☎ | 03 91733333

🌐 | www.hukm.ukm.my

Kajang Medical Centre Sdn. Bhd.

☎ | 03 8736 0631

Pantai Klang Specialist Medical Centre

☎ | 03 3372 5222

Shah Alam Medical Centre

☎ | 03 5121 2375

Sri Kota Medical Centre /

Pusat Perubatan Sri Kota

☎ | 03 3373 3636

Subang Jaya Medical Centre

☎ | 03 5634 1212

Sunway Medical Centre

☎ | 03 7491 9191

🌐 | www.sunmed.com.my

Tawakal Hospital

☎ | 03 40233599

🌐 | www.tawakal.com.my

The Tun Hussein Onn

National Eye Hospital

☎ | 03 7956 1511

Tung Shin Hospital

☎ | 03 20721655

🌐 | www.tungshinhospital.com.my

University Malaya Medical Centre

☎ | 03 79564422

🌐 | www.ummc.edu.my/index.php

Terengganu

Trengganu Specialist Medical Centre

☎ | 09 622 2544

PRIVATE HOSPITALS (STATE)

Wilayah Persekutuan Kuala Lumpur

Appollo TTDI Medical Centre

☎ | 03 7726 6911

Damai Service Hospital (H.Q.) Sdn. Bhd.

☎ | 03 4043 4900

Gleneagles Intan Medical Centre

☎ | 03 4257 1300

🌐 | www.gimc.com.my

HeartScan Malaysia

☎ | 03 22870988

🌐 | www.heartscan.com.my

Hospital Pantai Indah Sdn. Bhd.

☎ | 03 4289 2828

Institut Jantung Negara Sdn. Bhd.

☎ | 03 2617 8200

Klinik Surgeri dan Rumah Bersalin Tan

☎ | 03 9284 9782

Mont' Kiara Medical City Sdn. Bhd.

☎ | 03 3382 3500

Pantai Cheras Medical Centre

☎ | 03 9132 2022

🌐 | www.pantai.com.my

Pantai Medical Centre Sdn. Bhd.

☎ | 03 2296 0888

🌐 | www.pantai.com.my

Pusat Pakar Tawakal Sdn. Bhd.

☎ | 03 4023 3599

Pusat Rawatan Islam Sdn. Bhd.

☎ | 03 4041 4922

UKM Specialist Centre

☎ | 03 9170 3700

UM Specialist Centre Sdn. Bhd.

☎ | 03 7950 2650

DENTAL CLINICS

Johor

NH Tan Dental Specialist Clinic

☎ | 07 331 7878

☎ | 07 333 7879

Kuala Lumpur

Dental Pro

☎ | 03 2287 3333

☎ | 03 2287 9999

🌐 | www.dentalpro.org

Foo Dental Surgery

☎ | 03 6252 2011

☎ | 03 6252 2009

🌐 | www.mydentist.com.my

Negeri Sembilan

Klinik Pergigian Semarak

☎ | 06 799 3118

☎ | 06 799 9409

Penang

Eva Dental Surgery

☎ | 04 227 5848

☎ | 04 226 9835

Perak

Klinik Pergigian Wong

☎ | 05 313 4117

☎ | 05 313 4078

Sabah

Chhoa Dental Clinic

☎ | 088 23 2196

Sarawak

Hu's Dental Surgery

☎ | 084 33 2226

☎ | 084 32 7310

Selangor / Wilayah Persekutuan

Bright Smile Dental

☎ | 03 7873 1111

🌐 | www.bs dental.com/

Menara Dental Surgery

☎ | 03 7955 9178

Utama Dental Surgery

☎ | 03 7725 5227

☎ | 03 7725 5221

15 Major Insurance Companies

SELANGOR / WILAYAH PERSEKUTUAN

<p>AIA Co Ltd. (<i>American International Assurance Company Limited</i>) ☎ 03 2056 2000 / 03 2056 6666 🌐 www.aia.com.my</p>	<p>Lonpac Insurance Bhd ☎ 03 2262 8688 🌐 www.lonpac.com</p>
<p>AIG (<i>American International Group, Inc.</i>) ☎ 03 2056 3388 🌐 www.aig.com</p>	<p>MAA (<i>Malaysian Assurance Alliance Berhad</i>) ☎ 03 2146 8000 🌐 www.maa.com.my</p>
<p>Allianz General Insurance Malaysia Berhad ☎ 03 2161 6001 🌐 www.allianz.com.my</p>	<p>Manulife Insurance Berhad ☎ 03 2095 7612 🌐 www.manulife.com.my</p>
<p>AmAssurance ☎ 03 2178 8000 🌐 www.amassurance.com.my</p>	<p>MCIS Zurich Insurance Berhad ☎ 03 7652 3388 🌐 www.mciszurich.com.my</p>
<p>Asia Life (M) Berhad ☎ 03 2059 6188 🌐 www.asialife.com.my</p>	<p>Mayban General Assurance Berhad, Mayban Life Assurance Berhad ☎ 03 7844 3696 🌐 www.maybank2u.com.my</p>
<p>AXA Affin General Insurance Berhad ☎ 03 2170 8282 🌐 www.axa.com.my</p>	<p>Mitsui Sumitomo Insurance (Malaysia) Bhd ☎ 03 20508228 🌐 www.ms-ins.com.my</p>
<p>Great Eastern Life Assurance (M) Berhad ☎ 03 4259 8888 🌐 www.lifeisgreat.com.my</p>	<p>Overseas Assurance Corporation (Malaysia) Berhad (OAC) ☎ 03 4259 7888 🌐 www.oac.com.my</p>
<p>ING Insurance Berhad ☎ 03 2161 7255 🌐 www.ing.com.my</p>	<p>Pacific and Orient Insurance Co Berhad ☎ 03 2698 5033 🌐 www.pacific-orient.com/poi/index.htm</p>
<p>John Hancock ☎ 03 2095 7612 / 7613 🌐 www.johnhancock.com</p>	<p>PanGlobal Insurance Bhd ☎ 03 2078 2090 🌐 www.pgi.com.my</p>
<p>Kurnia Insurans ☎ 03 2692 2233 🌐 www.kurnia.com.my</p>	<p>Progressive Insurance Berhad ☎ 03 2141 0044 🌐 www.progressive-ins.com.my</p>

SELANGOR / WILAYAH PERSEKUTUAN

<p>Prudential ☎ 03 2116 0228 🌐 www.prudential.com</p> <p>Prudential Assurance Malaysia Berhad ☎ 03 2031 8228 🌐 www2.prudential.com.my/ PAMB/index.htm</p> <p>RHB Insurance Berhad ☎ 03 9281 2731 🌐 www.rhbinsurance.com.my</p>	<p>Takaful Nasional Sdn. Bhd. ☎ www.takafulnasional.com.my</p> <p>The Pacific Insurance Berhad ☎ 03 2176 1188 🌐 www.pacificinsurance.com.my</p> <p>Tokyo Marine 🌐 www.tokyomarine.net</p>
--	---

16 International Schools

JOHOR

<p>Sekolah Swasta Tun Dr. Ismail (<i>British Curriculum</i>) No. 23 Jalan Straits View 80200 Johor Bahru, Johor ☎ 07 2219 112</p> <p>The Japanese School (Johor) (<i>Japanese Curriculum</i>) No.3 Jalan Persiaran Seri Alam Bandar Seri Alam 81750 Johor Bahru, Johor ☎ 07 386 4562</p>	<p>Tun Dr Ismail Int'l School of Johor (<i>British Curriculum</i>) No. 11, 13 & 21 Jalan Straits View 80200 Johor <i>Corresponding Address:</i> No.9 Jalan Skudai 80200 Johor Bahru, Johor ☎ 07 221 8112</p>
--	---

KELANTAN

<p>Kelantan International School (<i>British Curriculum</i>) Jalan Telipot, 15150 Kota Bahru, Kelantan ☎ 09 744 6991</p>	
---	--

KUALA LUMPUR

<p>Alice Smith School (<i>British Curriculum</i>) 2 Jalan Bellamy, 50460 Kuala Lumpur ☎ 03 2148 3674</p>	<p>Deutsche Francaise (<i>French Curriculum</i>) 8A Jalan Tun Ismail 50480 Kuala Lumpur</p>
---	--

KUALA LUMPUR

French School of Kuala Lumpur

(French Curriculum)

N34 Jalan 1/38B
Off Jalan Segambut
51200 Kuala Lumpur
☎ 03 6250 4415

Fairview International School

(British Curriculum)

260 Jalan Ampang (RRI Bldg)
50450 Kuala Lumpur
☎ 03 4253 2233

Garden International School

(British Curriculum)

No. 16 Jalan 1/61A
Off Jalan Bukit Kiara
50480 Kuala Lumpur
☎ 03 6201 8988

Indian International School

55 Jalan Thamby Abdullah,
Brickfields, next to KL Sentral
Kuala Lumpur

☎ 03 2273 7255

International Islamic School

(Arab Curriculum)

2230, KM17 Jalan Gombak
53100 Kuala Lumpur
☎ 03 6186 1521

Mont' Kiara Intern'l School

(American Curriculum)

22 Jalan Mont' Kiara,
Off Jalan Bukit Kiara
50480 Kuala Lumpur

Sayfol International School, K.L.

(British Curriculum)

No.261 Jalan Ampang
50450 Kuala Lumpur
☎ 03 4256 8781

Sekolah Indonesia K.L.

(Indonesia Curriculum)

1 Lorong Tun Ismail,
50480 Kuala Lumpur
☎ 03 2692 7682

Sri Utama International School

(British Curriculum)

Lot 27 Jalan Usahawan 5
Kaw. Perusahaan Ringan Setapak
53200 Kuala Lumpur
☎ 03 4021 2490

MELAKA

Melaka Expatriate School

(British Curriculum)

2443C Jalan Batang Tiga
76400 Tanjung Kling, Melaka
☎ 06 315 4970

Melaka International School

(British Curriculum)

1 Jalan Kubu
75300 Melaka
☎ 06 286 2573

NEGERI SEMBILAN

Kolej Tuanku Jaafar

(British Curriculum)

71700 Mantin, Negeri Sembilan
☎ 06 758 2561

PENANG

Dalat School

(American Curriculum)

Tanjung Bunga
11200 Pulau Pinang
☎ | 04 899 2105

International School of Penang, Uplands

(British Curriculum)

Jalan Kelawei
10250 Pulau Pinang
☎ | 04 227 1764

Penang Japanese School

(Japanese Curriculum)

140 Jalan Sungai Pinang
10150 Pulau Pinang
☎ | 04 281 2187

Penang Tai Chiao School

(Taiwan Curriculum)

65 Jalan Macalister
10400 Pulau Pinang
☎ | 04 226 7828

St. Christopher International Primary School

(British Curriculum)

10 Jalan Nunn,
10350 Pulau Pinang
☎ | 04 228 0752

Tenby International School

No. 1208/1209 Jalan Kelawai
10250 Pulau Pinang

PERAK

Ipoh International School

(British Curriculum)

9 Jalan Watson, 30350 Ipoh, Perak
☎ | 05 253 8530

PAHANG

Garden International School

(British Curriculum)

A6230 Jalan Tengku Muhamad
Taman Pantai Cempedak
25050 Kuantan, Pahang
☎ | 09 567 3391

Highlands International Boarding School

KM10 Genting Highlands
69000 Pahang

International School of Kuantan

(British Curriculum)

1505 Jalan Tanjung Api
Padang Lalang
25050 Kuantan, Pahang
☎ | 09 515 2895

SELANGOR

Australian International School

*(Board of Studies
– New South Wales Curriculum)*
22 Jalan Anggerik, The Mines Resort
Sri Kembangan, Selangor
☎ 03 8733 3622

Cempaka International School

(British Curriculum)
Persiaran Awana
Cuepacs Garden, Cheras
43200 Selangor
☎ 03 9076 8400

Chinese Taipei School (KL)

(Taiwan Curriculum)
No 1 Persiaran Sungei Selangor
Bukit Rimau, Section 32
40460 Selangor Darul Ehsan
☎ 03 5121 3100

Deutsche Schule Kuala Lumpur

(German Curriculum)
Lot 5 Lorong Utara B
Off Jalan Utara, 46200 Petaling Jaya
Selangor Darul Ehsan
☎ 03 7956 6557

ELC International School

(British Curriculum)
P.O. Box 64, Sg. Buloh
47000 Selangor Darul Ehsan
☎ 03 6156 5001

Global Indian International School

No. 55 Jalan Thamby Abdullah
Brickfields
50470 Kuala Lumpur
☎ 03 2273 7255

Horizon Turkish Expatriate School

Lot No. 7 Lorong Tun Ismail
50200 Kuala Lumpur
☎ 03 2694 7945

International School of KL

(American Curriculum)
P.O. Box 12645
50784 Kuala Lumpur
☎ 03 4259 5600

Japanese School of K.L.

(Japanese Curriculum)
3KM Jln Lapangan Terbang Subang
47200 Selangor
☎ 03 7846 5939

Maz International School

No. 1 Jalan 20/19
Paramount Garden
46300 Selangor
☎ 03 7874 2930

Mutiara Intern'l Grammar School

(British Curriculum)
Lot 707 Jalan Kerja Air Lama
Ampang Jaya, 68000 Ampang
Selangor Darul Ehsan
☎ 03 4252 1452

Saudi Arabia Expatriate School

No. 4 Lorong Damai
Off Jalan Ampang
50480 Kuala Lumpur
☎ 03 4257 9433

Sri Kuala Lumpur International School

No. 1 Jalan SS15/7A
47500 Selangor

TERENGGANU

Ekhlass International School

21-22A Baiduri Apartment
Awana Kijal Resort
24100 Terengganu
☎ | 09 864 0594

Indian Expatriate School

Lot 12&13, Kompleks Kedai PMINT
Bandar Kertih
24300 Terengganu
☎ | 09 826 4973

SABAH

Kinabalu International School

(British Curriculum)
P.O.Box 12080
88822 Kota Kinabalu, Sabah
☎ | 088 224 526

Labuan International School

(British Curriculum)
5012 Jalan Tanjung Batu
87008 Labuan, Sabah
☎ | 087 410 484

SARAWAK

Sekolah Kumpulan Osa

P.O.Box 1084
97000 Sarawak

Sekolah Lodge Preparatory

(British Curriculum)
P.O.Box 882, Tabuan Jaya
93718 Kuching, Sarawak
☎ | 082 363 554

Sekolah Rendah Piasau

D/A Sarawak Shell Berhad
P.O.Box No. 1
98009 Sarawak
☎ | 085 452 242

Tunku Putra International School

(British Curriculum)
Lot 34-35 of Lot 7
Section 15, KTL D, Jalan Nanas
93400 Kuching, Sarawak
☎ | 082 207 166

17 Major Commercial Banks

SELANGOR / WILAYAH PERSEKUTUAN

Affin Bank Berhad

☎ | 03 2055 9000
🌐 | www.affinbank.com.my

Alliance Bank

☎ | 03 5516 9988
🌐 | www.alliancebank.com.my

Bangkok Bank Berhad

☎ | 03 2072 4555
🌐 | www.bbl.co.th

Bank Islam

☎ | 03 2616 8181
🌐 | www.bankislam.com .my

Bank Negara Malaysia

☎ | 03 2698 8044
🌐 | www.bnm.gov.my

Bank of America Malaysia Berhad

☎ | 03 2032 1133
🌐 | www.bankofamerica.com

SELANGOR / WILAYAH PERSEKUTUAN

Bank of Tokyo-Mitsubishi
(Malaysia) Berhad
T | 03 2034 8000
E | cdbtm@tm.net.my

CIMB Bank
T | 03 2084 8888
W | www.cimb.com

Citibank Berhad
T | 03 2383 0000
W | www.citibank.com

Deutsche Bank (Malaysia) Berhad
T | 03 2031 3882
W | www.ap.db.com

Hong Leong Bank
T | 03 7626 8899
W | www.hlb.com.my

HSBC Bank Malaysia Berhad
T | 03 2070 0744
W | www.hsbc.com.my

Malayan Banking Berhad (Maybank)
T | 03 2070 8833
W | www.maybank.com.my

OCBC Bank
T | 1 300 88 5000
W | www.ocbc.com.my

Public Bank Berhad
T | 03 2176 6000
W | www.publicbank.com.my

RHB Bank Berhad
T | 03 9287 8888
W | www.rhbbank.com.my

Standard Chartered Bank
T | 03 2781 7475
W | www.standardchartered.com.my

18 Travel Agencies

SELANGOR / WILAYAH PERSEKUTUAN

AAM Travel Sdn. Bhd.
Plaza Yow Chuan, Kuala Lumpur
T | 03 2161 6244
W | www.aamorg.com

Boustead Travel Services Sdn. Bhd.
Menara Boustead, Kuala Lumpur
T | 03 2141 7022
W | www.boustedtravel.com

Cruise Center
(Travel agency representing Star Cruises)
W | www.cruisecenter.com.my

Diethelm Travel Management Sdn. Bhd.
Wisma Selangor Dredging,
Kuala Lumpur
T | 03 2161 1922
W | diethelmtravel.com.my

Dynamite Cruises Langkawi
W | www.dynamitecruises.com/

EM Diving Holidays
W | www.eastmarines.com.my/

Emas Holidays
W | www.emasholiday.com/

eMalaysiaTravel.com
W | www.emalaysiatravel.com/

SELANGOR / WILAYAH PERSEKUTUAN

GEM Travel & Tour

☎ | 03 7727 928

🌐 | www.gem-travel.com.my

Harpers Travel

🌐 | welcome.to/harpers

Ken Air Leisure, KL

☎ | 03 2142 3722

🌐 | www.kenair.com.my/

Malaysia Beijing Travel Services - MBTS, KL

☎ | 03 2144 8888

🌐 | www.mbtstravel.com.my

Mansfield Travel, KL

☎ | 03 2143 3333

Masenang Tours & Travel

☎ | 088 258 376

🌐 | www.masenangtravel.com.my

Reliance Shipping and Travel Agency Sdn. Bhd.

Sungei Wang Plaza, Kuala Lumpur

☎ | 03 2148 6280

🌐 | www.sungeiwang.com

Sime Darby Travel Berhad

Wisma Sime Darby

Jalan Raja Laut, Kuala Lumpur

☎ | 03 2692 2177

🌐 | www.simedarby.com

Tahan Holidays

Taman Negara, National Park tours

🌐 | www.tahan.com.my

Ticket World (Online)

☎ | 1300 88 0000

🌐 | www.ticketworld.com.my

World Express Malaysia

☎ | 03 2163 2133

🌐 | www.worldexpresstours.com.my

WorldSpan Travel Agency (M) Sdn. Bhd.

Sri Hartamas

☎ | 03 6201 2511

🌐 | www.worldspantravel.com.my

SABAH

Exotic Borneo

☎ | 088 24 5920

🌐 | www.exborneo.com

SARAWAK

Suntravel Sdn. Bhd

☎ | 082 422 023

🌐 | www.suntravelborneo.com

TERENGGANU

Anjung Holidays

Perhentian Island, Terengganu

☎ | 09 697 4095

🌐 | www.pulauperhentian.com.my

EXPATRIATE ASSOCIATIONS

SELANGOR / WILAYAH PERSEKUTUAN

American Association of Malaysia

☎ | 03 2142 0611

✉ | aam1776@po.jaring.my

Association Française De Malaisie

☎ | 03 7958 4060

✉ | afmkl@hotmail.com

Association of British Women in Malaysia

☎ | 03 2095 4407

✉ | abwm@abwm.com.my

Association of Pakistan Women in Malaysia

☎ | 03 6251 4020

✉ | APWMalaysia@hotmail.com

African Ladies Group

☎ | 03 4256 5675

Canadian Association of Malaysia

☎ | 03 2161 6350

✉ | vedwards@streamyx.com/span>

Family Resource Group in Malaysia

✉ | ibu@family.org

🌐 | www.ibufamily.org

International Women's Association

☎ | 03 7954 1234

Korean Women Association

☎ | 03 4252 5585

Malaysian Australian & New Zealand Association

☎ | 03 7726 7145

✉ | manzakl@po.jaring.my

Netherlands Associations

☎ | 03 2698 8287 (After 6pm)

Royal Society of St. George
(Kuala Lumpur & Selangor)

☎ | 03 6201 0996

🌐 | www.stgeorgesmalaysia.com

Scandinavian Society Malaysia (SSM)

☎ | 03 2166 6991

✉ | scandinavian_society@hotmail.com

🌐 | www.scandinavian-malaysia.com

Selangor St. Andrew's Society (SSAS)

🌐 | www.ssas-online.com

St. David's Society (Welsh)

☎ | 03 6730 0155

St. Patrick's Society (Irish), Malaysia

☎ | 03 2093 8557

✉ | darinaw@hotmail.com

🌐 | http://get.to/stpatricks

Swiss Club, Malaysia

☎ | 03 6273 4589

🌐 | www.swissclub.com.my

The British Council in Malaysia

☎ | 03 2698 7555

✉ | information@britishcouncil.org.my

The Japan Club of Kuala Lumpur (JCKL)

☎ | 03 2274 2274

✉ | office@jckl.org.my

🌐 | www.jckl.org.my

The West Meets East Club of KL

☎ | 03 5636 3063

✉ | wmeclub25@yahoo.com

JOHOR

International Women's Association
Johor Bahru
☎ | 07 221 6085

Source: Malaysian International Chamber of Commerce and Industry

OTHER CLUBS AND SOCIETIES

SELANGOR / WILAYAH PERSEKUTUAN

California Fitness

☎ | www.californiafitness.com/home.jsp?country=my&lang=en

Clark Hatch Fitness Centers

☎ | www.clarkhatch.com.my

Fitness First Malaysia

☎ | www.fitnessfirst.com.my

Kuala Lumpur Ashtanga Yoga Studio,
Malaysia

☎ | www.klashtangayoga.com

Kuala Lumpur Hash House Harriers,
Malaysia

☎ | 03 3176 1870

☎ | kiamfee@pc.jaring.my

Sweat Club Fitness Gym

☎ | www.sweatclub.com.my

The National Tennis Complex, Malaysia

☎ | 03 6201 5482

True Fitness

☎ | www.truefitness.com.my

Yoga Space Kuala Lumpur Malaysia

☎ | www.yogaspaceskl.com

Yoga Zone Studio

☎ | www.yogazone.com.my

20 Recreation, Leisure and Golf Clubs

JOHOR

Austin Hills Country Club

☎ | 07 352 4300

Bukit Banang Golf & Country Club

☎ | 07 428 6001

Daiman 18 Golf Club

☎ | 07 351 6813

Desaru Golf & Country Club

☎ | 07 822 1187

Gemas Golf Resort

☎ | 07 948 4368

Guthrie Golf & Country Club

☎ | 07 752 7107

IOI Bahau Golf Club

☎ | 07 454 1128

Kelab Golf Batu Pahat

☎ | 07 432 9221

Kluang Country Club

☎ | 07 771 8840

Kukup Golf Resort

☎ | 07 696 0952

JOHOR

Ladang Bukit Lawang Country Club

☎ | 07 897 8124

Octville Golf & Country Club

☎ | 07 387 3000

Orchard Golf & Country Club

☎ | 07 897 7980

Palm Resort Golf & Country Club

☎ | 07 599 6222

Palm Villa Golf & Country Resort

☎ | 07 599 9099

Ponderosa Golf & Country Club

☎ | 07 354 9999

Poesia Country Club

☎ | 07 510 2032

Pulai Springs Country Club

☎ | 07 521 2121

Pulai Springs Resort

☎ | 07 521 2222

Royal Johor & Country Club

☎ | 07 223 3322

Sebana Golf & Marina Resort Cove

☎ | 07 826 6655

Segamat Country Club

☎ | 07 943 5968

S T Rhodes Club

☎ | 07 926 1204

Starhill Golf & Country Club

☎ | 07 5566 3265

Tanjong Puteri Golf & Country Club

☎ | 07 271 1888

The Legends Golf & Country Resort

☎ | 07 652 4388

KEDAH

Black Resort Golf & Country Club

☎ | 04 922 2790

Cinta Sayang Golf & Country Club

☎ | 04 441 4777

Darulaman Golf & Country Club

☎ | 04 917 0001

Datai Bay, The Golf Club

☎ | 04 959 2700

Dublin Estate Golf Club

☎ | 04 404 1104

Gunung Raya Golf Resort

☎ | 04 966 8148

Harvard Golf & Country Club

☎ | 04 458 6887

Kelab Kedah Darulaman Diraja

☎ | 04 731 9405

Kelab Sungai Petani

☎ | 04 422 4894

Langkawi Golf Club

☎ | 04 966 6187

Permai Pura Golf & Country Club

☎ | 04 452 1000

Royal Kedah Golf Club

☎ | 04 731 9405

KELANTAN

Kelantan Golf & Country Club

☎ | 09 748 2102

Kelantan Golf DiRaja Darul Naim

☎ | 09 765 2203

KUALA LUMPUR

Bangi Golf Resort

☎ | 03 8925 3728

Bukit Jalil Golf & Country Resort

☎ | 03 8994 1600

Bukit Kiara Equestrian & Country Resort

☎ | 03 2093 1222

Kelab Golf Angkatan Tentera

☎ | 03 2141 1113

Kelab Golf Perkhidmatan Awam

☎ | 03 7957 1958

Kuala Lumpur Golf & Country Club

☎ | 03 2093 1111

Staffield Country Resort

☎ | 03 876 66117

The Royal Lake Club

☎ | 03 2698 7878

The Royal Selangor Golf Club

☎ | 03 9206 3333

LANGKAWI

The Golf Club Datai Bay

☎ | 04 959 2620

MELAKA

A'Famosa Golf Resort

☎ | 06 552 0888

Ayer Keroh Country Club

☎ | 06 232 2000

Jasin Golf Club

☎ | 06 529 3758

Kelab Golf Tanjong Emas

☎ | 06 952 1550

Pandanusa Golf Club

☎ | 06 261 0699T

Tanjung Emas Golf Club

☎ | 06 952 1550

Tiara Melaka Golf & Country Club

☎ | 06 231 1111

NEGERI SEMBILAN

Guoman Golf Resort

☎ | 06 662 7878

Nilai Springs Golf & Country Club

☎ | 06 850 8888

Port Dickson Golf & Country Club

☎ | 06 647 3123

Resah Kemayan Golf Club

☎ | 06 601 1388

Royal Palm Springs Golf Club

☎ | 06 661 9599

Seremban International Golf Club

☎ | 06 677 5277

Tuanku Jaafar Golf & Country Resort

☎ | 06 678 3088

PAHANG

Astana Golf & Country Club

📞 09 573 5135

Awana Golf & Country Club

📞 03 6101 3015

Awana Horse Ranch

📞 03 6101 2026

Bukit Tinggi Golf & Country Resort

📞 09 288 8890

Cameron Highlands Golf Club

📞 05 491 1126

Fraser's Hill Golf & Country Club

📞 09 362 2777

Kelab Golf Bentong

📞 09 222 2585

Kelab Golf Bukit Galing

📞 09 514 1988

Kelab Golf DiRaja Pahang

📞 09 567 5811

Kelab Golf Indera Kuantan

📞 09 538 5588

Kelab Golf Kem Ungku Nazamuddin

📞 09 312 2901

Kelab Golf Seri Mahkota

📞 09 277 7831

Kelab Rekreasi TUDM Kuantan

📞 09 538 4282

Langjut Golf & Beach Resort

📞 09 414 5113

Pantai Lagenda Golf & Country Club

📞 09 425 1658

Raub Golf Club

📞 09 369 8185

Royal Pahang Golf Club

📞 09 567 5811

Selesa Hill Health Farm & Golf Resort

📞 09 233 0039

PENANG

Bukit Jambul Country Club

📞 04 644 2255

Bukit Jawi Golf Resort

📞 04 582 0759

Kristal Golf Resort

📞 04 582 2280

Kulim Golf & Country Club

📞 04 403 2828

Pearl Island Country Club

📞 04 582 2280

Penang Golf Resort

📞 04 578 2022

Penang Turf Club (Equestrian Centre)

📞 04 229 3233

PERAK

Bukit Jana Golf & Country Club

📞 05 883 7500

Clearwater Sanctuary Golf Resort

📞 05 366 7433

Damai Laut Golf & Country Club

📞 05 618 3333

Kelab Golf Kuala Kangsar

📞 05 776 2396

Kinta Golf Club

📞 05 366 7270

Meru Valley Golf & Country Club

📞 05 529 3333

PERAK

Pangkor Island Country Club ☎ 05 685 1091	Royal Perak Golf Club ☎ 05 547 3266
Perak Turf Club ☎ 05 254 0505	Taipung Golf & Country Club ☎ 05 883 7500

PERLIS

Putra Golf Club ☎ 04 976 9660	
------------------------------------	--

SABAH

Borneo Golf & Country Club ☎ 087 861 888	Sabah Golf & Country Club ☎ 088 247 5333
Karambunai Resort s Golf Club ☎ 088 411 215	Sandakan Golf & Country Club ☎ 089 660 557
Kinabalu Golf Club ☎ 088 251 615	Shan-Shui Golf & Country Club ☎ 089 916 888
Labuan Golf Club ☎ 087 412 711	Sigalong Golf & Country club ☎ 089 761 611
Lahad Datu Golf Club ☎ 089 889 288	Sutera Harbour Golf & Country Club ☎ 088 252 266
Mimpian Jadi Resort Bhd ☎ 088 787 799	Tambunan Golf Club ☎ 087 774 958
Mount Kinabalu Golf Club ☎ 088 889 445	Tawau (Hot Spring) Golf Club ☎ 089 765 555
Ranau Golf Club ☎ 088 875 554	

SARAWAK

Bintulu Golf Club ☎ 086 253 213	Prisons Golf Club ☎ 082 617 209
Damai Golf & Country club Bhd ☎ 082 846 088	Sarawak Golf Club ☎ 082 444 791
Hornbill Golf & Kungle Club ☎ 082 790 800	Sibu Golf Club ☎ 084 801 119
Miri Golf Club ☎ 085 416 787	The Sarawak Club ☎ 082 242 299

SELANGOR

Bukit Kemuning Golf & Country Club

☎ | 03 5121 7188

Bukit Unggul Country Club

☎ | 03 8920 2888

Carey Island Golf Club

☎ | 03 3371 8611

Commonwealth Club

☎ | 03 2094 4089

Glenmarie Golf & Country Club

☎ | 03 7803 9090

Impian Golf & Country Club

☎ | 03 8734 4195

Kundang Lakes Country Club

☎ | 03 6034 2725

Kelab Darul Ehsan

☎ | 03 4257 2333

Kelab Golf Briged Tengah PPH

☎ | 03 9057 5643

Kelab Golf Negara Subang

☎ | 03 7876 0388

Kelab Golf Rahman Putra

☎ | 03 6156 6870

Kelab Golf Seri Selangor

☎ | 03 7806 1111

Kelab Golf Sultan Abdul Aziz Shah

☎ | 03 5519 1512

Kelab Rekreasi Tentera Udara

☎ | 03 7846 4415

Kelab Rekreasi U.K.M

☎ | 03 8925 7685

Kinrara Golf Club Sdn Bhd

☎ | 03 8076 2100

Kota Permai Golf & Country Club

☎ | 03 5122 3700

Monterez Golf & Country Club

☎ | 03 7846 5989

Palm Garden Golf Club

☎ | 03 8948 7160

Perangsang Templer Golf Club

☎ | 03 6091 0022

Port Klang Golf Resort

☎ | 03 3176 5000

Royal Kampung Kuantan Golf & Country Club

☎ | 03 3289 1069

Royal Selangor Club

☎ | 03 2692 7166

Royal Selangor Polo & Riding Club

☎ | 03 4256 4531

Royal Selangor Yacht Club

☎ | 03 3168 6964

Saujana Golf & Country Club

☎ | 03 7846 1466

Selangor Turf Club

☎ | 03 9058 3888

Serendah Golf Links

☎ | 03 6081 1077

Sri Morib Golf Club

☎ | 03 3198 1418

Sungai Long Golf & Country Club

☎ | 03 9076 2233

Tasik Puteri Golf & Country Club

☎ | 03 6034 4721

Templer Park Country Club

☎ | 03 6091 9111

Tropicana Golf & Country Club

☎ | 03 7804 8888

SELANGOR

The Mines Golf & Country Club ☎ 03 8943 2288	Valencia Golf Club ☎ 03 6156 0021
The Raintree Club ☎ 03-4257 9066	

TERENGGANU

Awana Kijal Beach & Golf Resort ☎ 09 864 1188	Royal Terengganu Golf Club ☎ 09 622 9393
Kelab Desa Rantau Petronas ☎ 09 864 0232	Tasik Kenyir Golf Resort ☎ 09 666 8888
Kuala Terengganu Golf Resort ☎ 09 666 5836	Tioman Island Golf Club ☎ 09 419 1000

21 Catering Companies

CHINESE

SELANGOR / WILAYAH PERSEKUTUAN

Asia Garden Caterers ☎ 03 6259 2661	Wong Catering Services ☎ 03 7806 2089
Tai Thong Catering Services ☎ 03 7984 1188	

INDIAN

SELANGOR / WILAYAH PERSEKUTUAN

Annalakshmi ☎ 03 2284 3799	Lotus Restaurant ☎ 03 7727 1713
Kottaram Restaurant ☎ 03 7955 1077	Sri Grand City Caterer ☎ 03 7957 3158
Little Caterers ☎ 03 8076 3737	

MALAY

SELANGOR / WILAYAH PERSEKUTUAN

Chef (Rasa Sayang) Restaurant

☎ | 03 2141 0718

H and H Catering Services

☎ | 03 7804 1740

Kampungku Catering Services Sdn. Bhd.

☎ | 03 5634 6222

WESTERN

SELANGOR / WILAYAH PERSEKUTUAN

Eden Catering Sdn Bhd

☎ | 03 78038204

22 Embassies High Commissions and Consulates

SELANGOR / WILAYAH PERSEKUTUAN

AFGHANISTAN

Embassy of the Islamic State of
Afghanistan

☎ | 03 4256 9400

✉ | embassy@afghanembassy.
kl.org

ALBANIA

Embassy of the Republic of Albania

✉ | Albania@streamyx.com

ALGERIA

Embassy of the People's Democratic
Republic of Algeria

☎ | 03 2148 8159

✉ | Public-Affairs-KLPR@
dfat.gov.au

ARGENTINA

Embassy of the Argentine Republic

☎ | 03 2095 0176

✉ | emsia@pd.jaring.my

AUSTRALIA

Australian High Commission

☎ | 03 2146 5555

✉ | Public-Affairs-KLPR@
dfat.gov.au

AUSTRIA

Austrian Embassy

☎ | 03 2148 4277

✉ | kuala-lumpur-ob@bmaa.gv.at

BANGLADESH

High Commission for the People's
Republic of Bangladesh

☎ | 03 2148 7940

✉ | bdoot@Streamyx.com

BELGIUM

Embassy of Belgium

☎ | 03 4252 5733

✉ | belgium@po.jaring.my

✉ | kualalumpur@diplobel.org

SELANGOR / WILAYAH PERSEKUTUAN

BOSNIA AND HERZEGOVINA

Embassy of Bosnia and Herzegovina

📞 | 03 2144 0353

✉ | embbhkl@tm.net.my

BRAZIL

Embassy of the Federative Republic of Brazil

✉ | brazil@po.jaring.my

BRUNEI DARUSSALAM

High Commission of Brunei Darussalam

📞 | 03 2161 2800

✉ | bhckl@brucomkul.com.my

CAMBODIA

Royal Embassy of the Cambodia

📞 | 03 4257 3711

✉ | reckl@tm.net.my

CANADA

Canadian High Commission

📞 | 03 2718 3333

✉ | klmpr@dfaint-maeci.gc.ca

CHILE

Embassy of Chile

📞 | 03 2161 6203

✉ | eoehile@ppp.nasionet.net

CHINA

Embassy of the People's Republic of China

🌐 | my.chineseembassy.org

COLOMBIA

Embassy of the Republic of Colombia

📞 | 03 2164 5488

✉ | emcomal@po.jaring.my

CROATIA

Embassy of the Republic of Croatia

📞 | 03 4253 5340

✉ | croemb@tm.net.my

CUBA

Embassy of Cuba

📞 | 03 2691 1066

✉ | ambpa@cuba.emb.com.my

✉ | admin@cuba.emb.com.my

✉ | cuba_emb@streamyx.com

CZECH REPUBLIC

Embassy of the Czech Republic

📞 | 03 2142 7185

✉ | kualalumpur@embassy.mzv.cz

DENMARK

Royal Danish Embassy

📞 | 03 2032 2001

✉ | denmark@denmark.com.my

ECUADOR

Embassy of the Republic of Ecuador

📞 | 03 2163 5078

✉ | embecua@po.jaring.my

EGYPT

Embassy of the Arab Republic of Egypt

📞 | 03 4256 8184

✉ | egyembkl@tm.net.my

EUROPEAN COMMISSION

Delegation of the European Commission

✉ | delegation-malaysia@cec.eu.int

FIJI ISLANDS

High Commission of the Republic of the Fiji Islands

📞 | 03 2732 3335

✉ | fhckl@pd.jaring.my

FINLAND

Embassy of Finland

📞 | 03 4257 7746

✉ | sanomat.kul@formin.fi

SELANGOR / WILAYAH PERSEKUTUAN

FRANCE

Embassy of the Republic of France

📞 | 03 2053 5500

GERMANY

Embassy of the Federal Republic of Germany

📞 | 03 2170 9666

✉ | contact@german-embassy.org.my

GHANA

High Commission of the Republic of Ghana

📞 | 03 4252 6995

✉ | ghcomkl@tm.ney.my

GUINEA

Embassy of the Republic of Guinea

📞 | 03 4257 6500

HUNGARY

Embassy of the Republic of Hungary

📞 | 03 2163 7914

✉ | huembkl@po.jaring.com

INDIA

High Commission of India

📞 | 03 2093 3504

✉ | Highcomm@po.jaring.my

✉ | dhc002@po.jaring.my

INDONESIA

Embassy of the Republic of Indonesia

📞 | 03 2142 1354

✉ | kbrikl@po.jaring.my

IRAN

Embassy of the Islamic Republic of Iran

📞 | 03 4251 4824

✉ | ir_emb@tm.net.my

IRAQ

Embassy of the Republic of Iraq

📞 | 03 2148 0555

✉ | iraqiakl@streamyx.com

IRELAND

Embassy of Ireland

📞 | 03 2161 2963

✉ | ireland@po.jaring.my

ITALY

Embassy of the Republic of Italy

📞 | 03 4256 5122

✉ | embassyit@italyembassy.org.my

JAPAN

Embassy of Japan

📞 | 03 2142 7044

🌐 | www.my.emb_japan.gov.jp

JORDAN

Embassy of the Hashemite Kingdom of Jordan

📞 | 03 4252 1268

✉ | jorembkl@streamyx.com

KAZAKHSTAN

Embassy of the Republic of Kazakhstan

✉ | klkazem@po.jaring.my

KENYA

High Commission of the Republic of Kenya

✉ | kenya@po.jaring.my

KOREA (NORTH)

Embassy of the Democratic People's Republic of Korea

📞 | 03 4256 9913

✉ | dprkorea@streamyx.com

KOREA (SOUTH)

Embassy of the Republic of Korea

📞 | 03 4251 2336

KUWAIT

Embassy of the State of Kuwait

📞 | 03 2141 0033

✉ | q8kl@pd.jaring.my

SELANGOR / WILAYAH PERSEKUTUAN

KYRGYZ

Embassy of the Kyrgyz Republic

📞 | 03 2164 9862

✉ | kyrgyz@tm.net.my

LAOS

Embassy of the Lao People's
Democratic Republic

📞 | 03 2148 7059

✉ | embassylaos@yahoo.com

LIBYA

The People's Bureau of the Great
Socialist People's

LUXEMBOURG

Embassy of the Grand-Duchy of
Luxembourg

✉ | emludem@po.jaring.my

MAURITIUS

High Commission of the Republic of
Mauritius

📞 | 03 2163 6306

✉ | maurhckl@yahoo.com.my

MEXICO

Embassy of Mexico

📞 | 03 2164 6362

✉ | embamex@po.jaring.my

🌐 | <http://www.embamex.org.my>

MOROCCO

Embassy of the Kingdom of Morocco

📞 | 03 2161 0701

✉ | sifmakl@po.jaring.my

MYANMAR

Embassy of the Union of Myanmar

✉ | mekl@tm.net.my

NAMIBIA

High Commission of Namibia

📞 | 03 2164 6520

✉ | namhckl@po.jaring.my

NEPAL

The Royal Nepalese Embassy

📞 | 03 2164 5934

✉ | mekl_88@streamyx.com

NETHERLANDS

Royal Netherlands Embassy

📞 | 03 2168 6200

✉ | nlgovkl@po.jaring.my

✉ | trade@netherlands.org.my

NEW ZEALAND

New Zealand High Commission

📞 | 03 2078 2533

✉ | nzhekl@po.jaring.my

NIGERIA

High Commission of the Federal
Republic of Nigeria

📞 | 03 4251 8512

🌐 | www.nigeria.org.my

NORWAY

The Royal Norwegian Embassy

📞 | 03 2175 0300

✉ | emb.kualalumpur@mfa.no

OMAN

Embassy of the Sultanate of Oman

📞 | 03 4257 7378

✉ | omanembassykl@maktoob.com

PAKISTAN

High Commission for the Islamic
Republic of Pakistan

📞 | 03 2161 8877

✉ | parepklumpur@po.jaring.my

PALESTINE

Embassy of the State of Palestine

📞 | 03 4256 8905

PAPUA NEW GUINEA

Papua New Guinea High Commission

📞 | 03 4257 5405

SELANGOR / WILAYAH PERSEKUTUAN

PERU

Embassy of the Republic of Peru

☎ | 03 2163 3034

✉ | embperu@po.jaring.my

PHILIPPINES

Embassy of the Republic of the Philippines

☎ | 03 2148 4233

✉ | webmaster@philembassykl.org.my

POLAND

Embassy of the Republic of Poland

☎ | 03 4257 6733

✉ | polamba@tm.net.my

ROMANIA

Embassy of Romania

☎ | 03 2142 3172

✉ | roemb@streamyx.com

RUSSIA

Embassy of the Russian Federation

✉ | ruemvvl@tm.net.my

SAUDI ARABIA

Royal Embassy of Saudi Arabia

☎ | 03 4257 9825

✉ | saembssy@tm.net.my

SENEGAL

Embassy of the Republic of Senegal

☎ | 03 4256 7343

✉ | senamb_mal@yahoo.fr

SINGAPORE

The Republic of Singapore

☎ | 03 2161 6277

✉ | shckl@pd.jaring.my

SLOVAKIA

Embassy of the Slovakia Republic

☎ | 03 2115 0016

✉ | slovemb@tm.net.my

SOUTH AFRICA

High Commission of the Republic of South Africa

☎ | 03 4026 5700

✉ | sahcpol@tm.net.my

SPAIN

Embassy of Spain

☎ | 03 2142 8776

✉ | embespmj@mail.mae.es

SRI LANKA

High Commission of the Democratic Socialist

☎ | 03 4256 8987

✉ | sihicom@putra.net.my

SUDAN

Embassy of the Republic of Sudan

☎ | 03 4256 9104

✉ | assalam12@hotmail.com

SWAZILAND

High Commission of the Kingdom of Swaziland

☎ | 03 2163 2511

✉ | swazi@tm.net.my

SWEDEN

Embassy of Sweden

☎ | 03 2052 2550

✉ | ambassaden.kualalumpur@foreign.ministry.se

SWITZERLAND

Embassy of Switzerland

☎ | 03 2148 0622

✉ | vertretung@kua.rep.admin.ch

SYRIAN ARAB REPUBLIC

Embassy of the Syrian Arab Republic

☎ | 03 2163 4110

SELANGOR / WILAYAH PERSEKUTUAN

THAILAND

Royal Thai Embassy

📞 | 03 2148 8222

✉ | thaikl@pop1.jaring.my

TIMOR-LESTE

Embassy of the Democratic Republic of Timor-Leste

📞 | 03 4256 2078

✉ | embaixada_tl_kl@yahoo.com

TURKEY

Embassy of the Republic of Turkey

📞 | 03 4257 2225

✉ | turkbe@tm.net.my

UKRAINE

Embassy of Ukraine

📞 | 03 2166 9552

✉ | emb_my@mfa.gov.ua

UNITED ARAB EMIRATES

Embassy of the United Arab Emirates

📞 | 03 4253 5221

✉ | uaemal@tm.net.my

UNITED KINGDOM OF GREAT BRITAIN AND NORTHERN IRELAND

British High Commission

📞 | 03 2170 2200

🌐 | www.britain.org.my

UNITED STATES OF AMERICA

Embassy of the United States of America

📞 | 03 2168 5000

🌐 | Malaysia.usembassy.gov

UZBEKISTAN

Embassy of the Republic of Uzbekistan

📞 | 03 4253 3406

✉ | uzbekemb@tm.net.my

VENEZUELA

Embassy of Bolivarian Republic of Venezuela

📞 | 03 2163 3444

✉ | venezuela@po.jaring.my

VIETNAM

Embassy of the Socialist Republic of Vietnam

📞 | 03 2148 4036

✉ | daisevn@putra.net.my

YEMEN

Embassy of the Republic of Yemen

📞 | 03 4251 1793

✉ | yemenkl@tm.net.my

ZIMBABWE

Embassy of the Republic of Zimbabwe

📞 | 03 4251 6779

✉ | zhck@tm.net.my

23 Glossary of Common Words and Phrases

ENGLISH

Hello

Please

How are you?

Fine

Welcome

May I know your name?

MALAY

Hello

Tolong

Apa khabar?

Baik

Selamat datang

Bolehkah saya tahu nama kamu?

ENGLISH

MALAY

My name is...	Nama saya...
Can you speak English?	Tahukah anda bercakap Bahasa Inggeris?
I don't understand	Saya tidak faham
Thank you	Terima kasih
You're welcome	Sama-sama
I'm sorry / Excuse me	Maafkan saya
Can you help me?	Bolehkah kamu tolong saya?
May I know where the public phone is?	Boleh saya tahu di mana ada telefon awam?
I want to make a phone call	Saya mahu membuat panggilan telefon
Do you have small change?	Adakah kamu ada duit kecil?
How much is the fare?	Berapakah tambangnya?
Male	Lelaki
Female	Perempuan
Friend	Kawan
Yes	Ya
No	Tidak
Big	Besar
Small	Kecil
How much is this?	Berapakah harganya?
Can you give me the address of...?	Bolehkah kamu beri saya alamat untuk...?
Can you tell me how to go to ...?	Boleh beritahu saya bagaimana pergi ke...?
Where is ...?	Di manakah ...?
How far is it from here?	Berapakah jauhnya dari sini?
Toilet	Tandas
Where are the toilets/washroom?	Di mana tandas/tempat mandi?
Left	Kiri
Right	Kanan
Stop	Berhenti

ENGLISH**MALAY**

Floor	Tingkat
Level	Aras
Road / Street	Jalan

NUMBERS

One	Satu
Two	Dua
Three	Tiga
Four	Empat
Five	Lima
Six	Enam
Seven	Tujuh
Eight	Lapan
Nine	Sembilan
Ten	Sepuluh

TIME

Good morning	Selamat pagi
Good afternoon	Selamat petang
Good night	Selamat malam
Goodbye	Selamat tinggal

DAYS OF THE WEEK

Sunday	Ahad
Monday	Isnin
Tuesday	Selasa
Wednesday	Rabu
Thursday	Khamis
Friday	Jumaat
Saturday	Sabtu

ENGLISH**MALAY****GEOGRAPHIC FEATURES**

Hill	Bukit
Lake	Tasik
Mountain	Gunung
River	Sungai
Village	Kampung
Valley	Lembah
Waterfall	Air Terjun
Beach	Pantai
Island	Pulau
Sea	Laut

TRAFFIC PHRASES

Turn Left	Belok Kiri
Turn Right	Belok Kanan
Straight Ahead	Berjalan Terus
Intersection	Simpang
Bus	Bas
Car	Kereta/Motokar
Taxi	Teksi
Entry	Masuk
Exit	Keluar
Open	Buka
Road	Jalan
Lane	Lorong
Highway	Lebuhraya
North	Utara
South	Selatan
East	Timur
West	Barat

ENGLISH**MALAY****TRAFFIC PHRASES**

Caution	Awas
Stop	Berhenti
Give Way	Beri Laluan
Ahead	Di Hadapan
No Overtaking	Dilarang Memotong
Speed Limit	Had Laju
Keep Right	Ikut Kanan
Keep Left	Ikut Kiri
One-way Street	Jalan Sehalu
Slow Down	Kurangkan Laju
Detour	Lencongan
Sharp Bends	Liku Tajam

FOOD

Rice	Nasi
Noodles	Mee
Fried noodles	Mee Goreng
Bread	Roti
Chicken	Ayam
Beef	Daging Lembu
Lamb	Daging Kambing
Prawns	Udang
Crabs	Ketam
Fish	Ikan
Eggs	Telur
Eat	Makan
Drink	Minum
Water	Air
Drinking Water	Air Minuman

ENGLISH

MALAY

TRAFFIC PHRASES

Order	Pesan
Not too Spicy	Kurang Pedas
Not too Sweet	Kurang Manis
Hot	Panas
Cold	Sejuk
Sweet	Manis
Sour	Masam
Salt	Garam
Sugar	Gula
Pepper	Lada

24 Useful/Emergency Telephone Numbers

Fire 📞 999 / 994	Police & Ambulance 📞 999 / 994
-----------------------	-------------------------------------

POLICE OPERATING ROOMS

Bukit Aman 📞 03 2262 6222	Negeri Sembilan 📞 06 768 2222
Johor 📞 07 225 4422	Pahang 📞 09 590 2222
Kedah 📞 04 774 1222	Penang 📞 04 222 1522
Kelantan 📞 09 745 5622T	Perak 📞 05 245 1222
Kuala Lumpur 📞 03 2146 0522	Perlis 📞 04 908 2222
Labuan 📞 087 412 222	Sabah 📞 088 212 222
Melaka 📞 06 285 4222	Sarawak 📞 082 245 522

POLICE OPERATING ROOMS

Selangor ☎ 03 5514 5222	Tourist Police ☎ 03 2149 6590
Terengganu ☎ 09 635 4722	

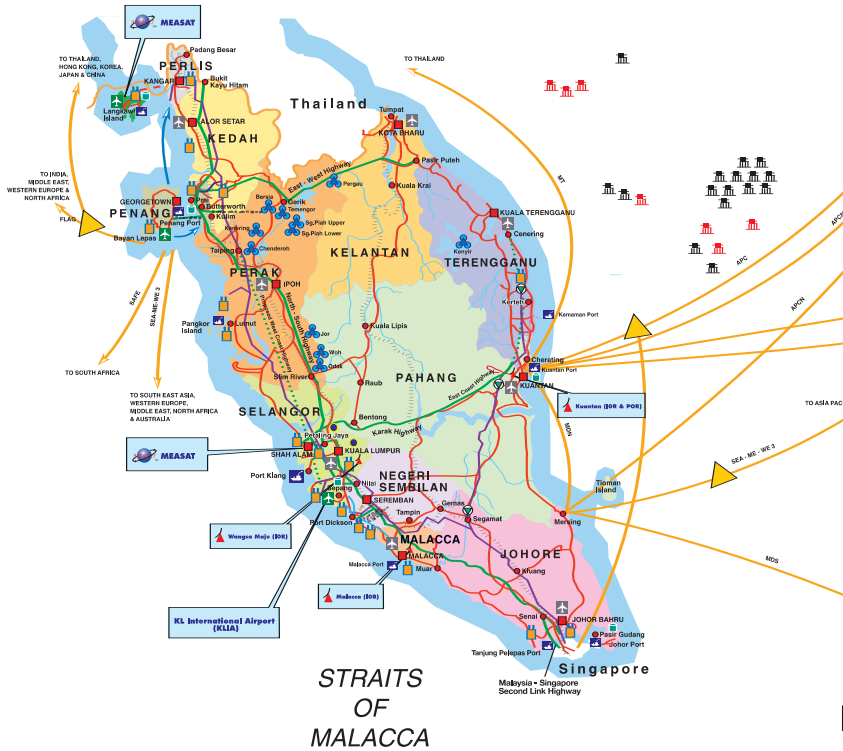
OTHERS

SELANGOR / WILAYAH PERSEKUTUAN

Alam Flora Garbage (KL) ☎ 03 4042 5873	Missing Pets ☎ 03 4021 1682
Alam Flora Garbage (PJ) ☎ 03 7874 8433	Snakes/pests ☎ 03 6138 4810
Animal Medical Centre (24hr) ☎ 03 9284 2255	Water (KL Hotline) ☎ 03 6284 3434
Electricity/Power failure (KL/PJ) ☎ 15454	

TELEPHONE SERVICES

Difficulties ☎ 100	International Assistance ☎ 108
Directory Assistance ☎ 103	KLIA Flight Information ☎ 03 8777 8888
Installations ☎ 105/03 4256 0622	



STRAITS OF MALACCA

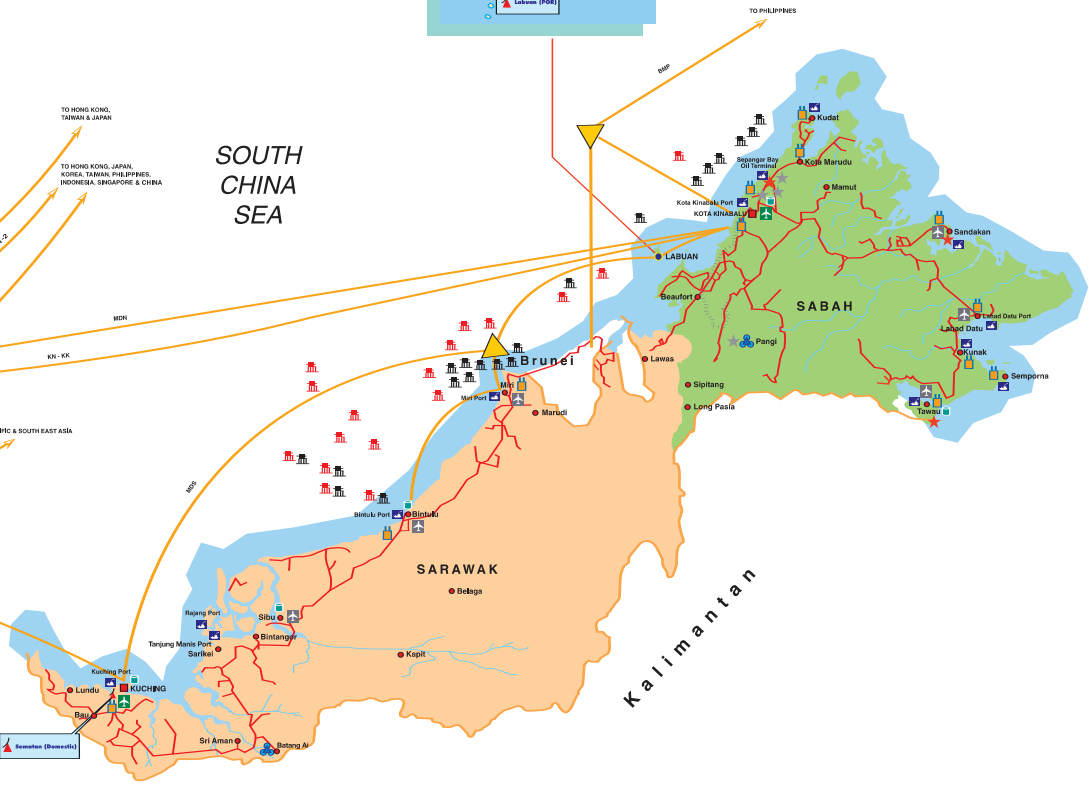
LEGEND

- Town
- Capital
- Major Road
- Railway / Expressway
- - - Proposed Highway
- International Boundary
- ✈ Domestic Airport
- ✈ International Airport
- ✈ Port

TELECOMMUNICATIONS

- Analogue Cable
- Fibre Optic Cable
- (FLAG) Fibre Optic Link Around The Globe
- (SAFE) South Africa - Far East
- (KN-KK) Kuantan - Kota Kinabalu
- (MDS) Malaysia Domestic South
- (MDN) Malaysia Domestic North
- (IOR) Indian Ocean Region
- (POR) Pacific Ocean Region

- (MT) Malaysia - Thailand
- (APC) Asia Pacific Cable
- (BMP) Brunei - Malaysia - Philip
- (APCN) Asia Pacific Cable Netw
- (SEA-ME-WE 3) South East Asia - Middle
- ▲ Branching Unit
- International Switching
- ▲ Satellite Earth Station
- ✈ MEASAT Satellite Contr



SOUTH CHINA SEA

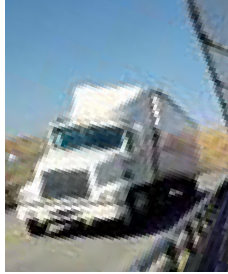
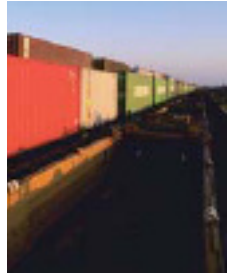
OIL / GAS

- Peninsular Gas Utilisation Pipeline
- Multi-product Pipeline
- Compressor Station
- Kuantan-Kerteh Railway for Petrochemical Projects
- Petroleum Depot
- Oil Field
- Gas Field

POWER STATION

- Thermal
- Hydro
- Grid
- IPP (Independent Power Producer)





Maximise your international business potential with HSBC Trade Services

Wherever in the world you trade, having the right banking partner counts.

At HSBC, Trade Services and financing of international trade have been our core strength since 1884. Today, HSBC Group has around 10,000 offices in 82 countries and territories worldwide to cover your trade financing needs.

With our world-renowned trade expertise and award-winning service, HSBC Trade Services is the ideal solution for your business needs in international trade.

Find out how you can easily access our value-added trade financing solutions.

Talk to our Relationship Managers today.

- Best Trade Finance Bank 1997 – 2004 by Finance Asia
- Best Trade Finance Bank in Asia 2002 – 2004 by Global Finance
- Best Bank in Malaysia 2006 by The Asset
- Best Foreign Exchange Bank in Malaysia 2007 by Global Finance

Email tradeservices@hsbc.com.my

Log on to www.hsbc.com.my **Click** "Commercial"

COMMERCIAL BANKING

HSBC 
The world's local bank