

'Forgotten Frontline'





Mark Harrison

Timescapes

Landscape investigator



Rules of Archaeology

Seventy percent of archaeology is done in the library...

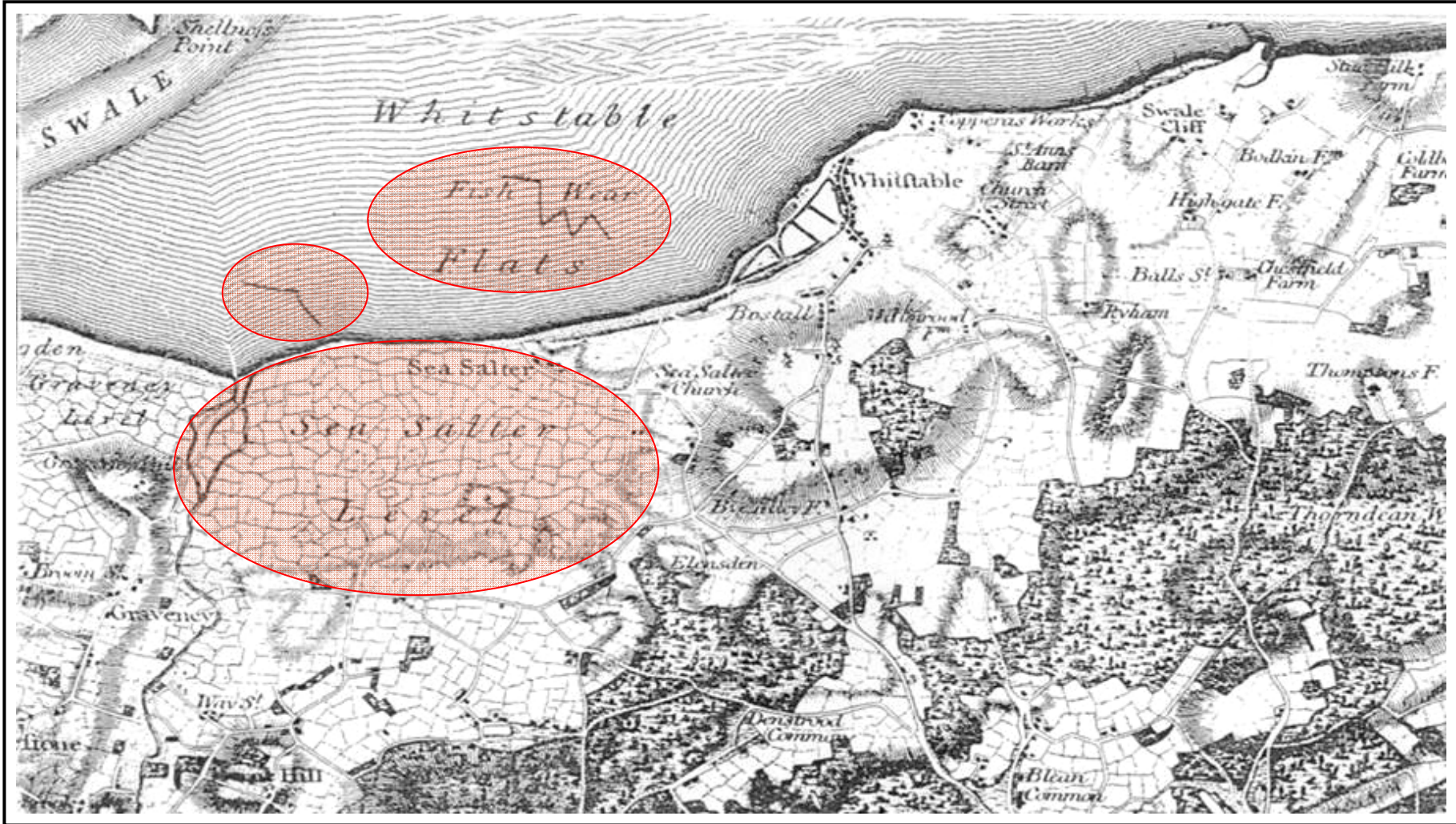
Forget any ideas about lost cities, exotic travel and digging up the world...

We do not follow maps to buried treasure, and '**X**' never, ever marks the spot...

Or does it..?



Ordnance Survey 1801



Posts...



Ironside's Plan

"To prevent the enemy from running riot and tearing the guts out of the country"



General William Edmund Ironside,
Chief of the Imperial General Staff

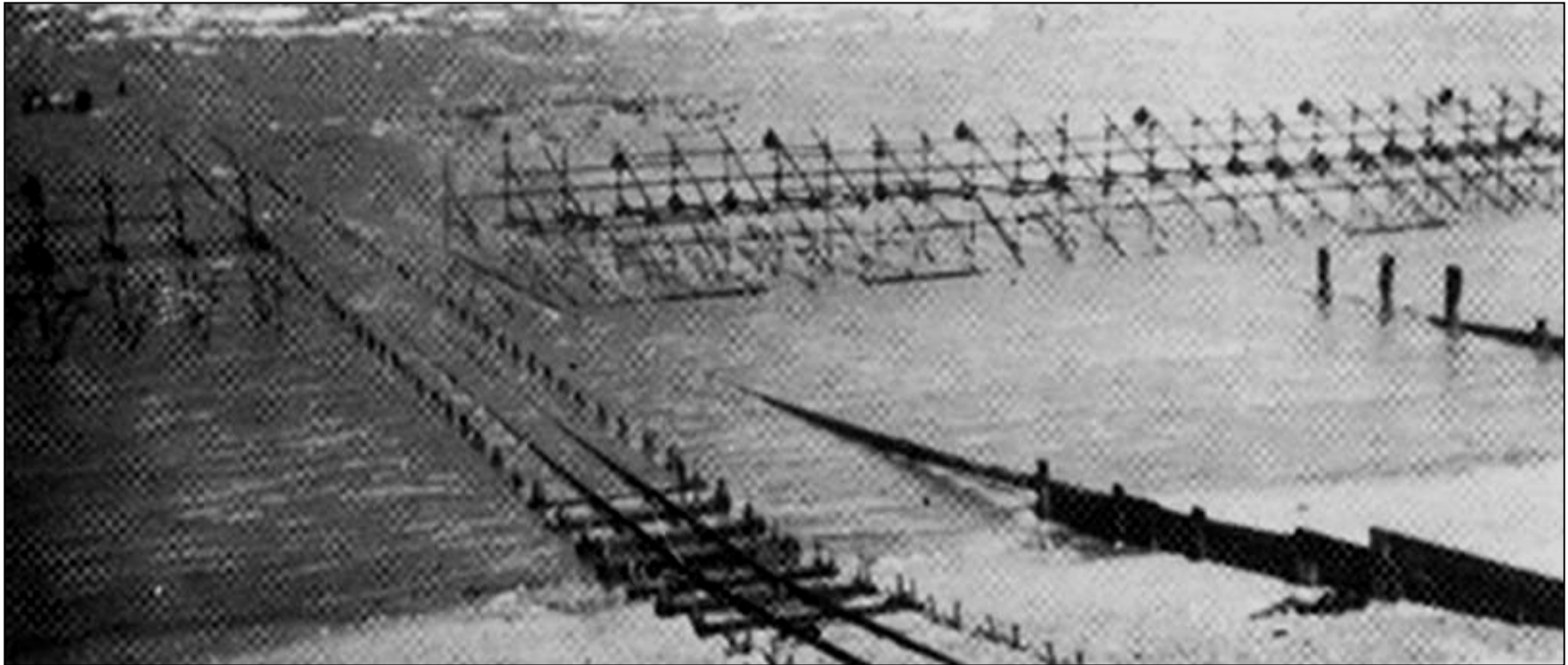




A new vocabulary - Z1 anti-invasion barrier



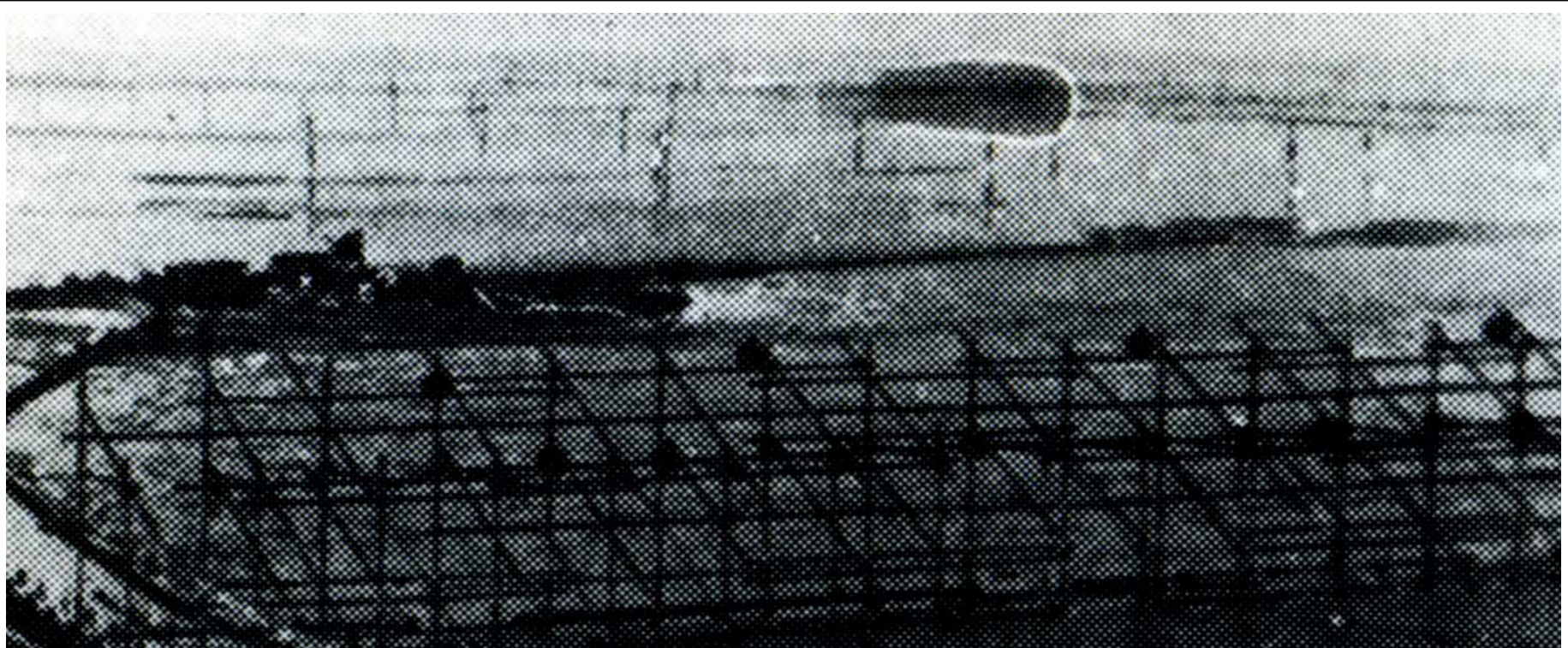
Z1 scaffolding anti-invasion barrier



Posts...



Wonder of Photoshop - Anti-landing Obstacles



...and markers for the Dambusters?



Defence of Kent 1940

Lieutenant-General Thorne

Thorne considered enemy landing likely between **Graveney** and Dover

Laid down a line across the Marshes incorporating the **railway** and where possible **natural features**



Defence of Kent – Romney Marsh



Coastal crust

Coastal forces ordered to 'Stand Firm'

Until mobile reinforcements arrive and

**Cause maximum casualties to invaders
on beaches.**

3 Levels



Coastal crust

1st LEVEL: BEACH - Beach obstacles

'Z1' barrier scaffolding ✓

Barbed wire ✗

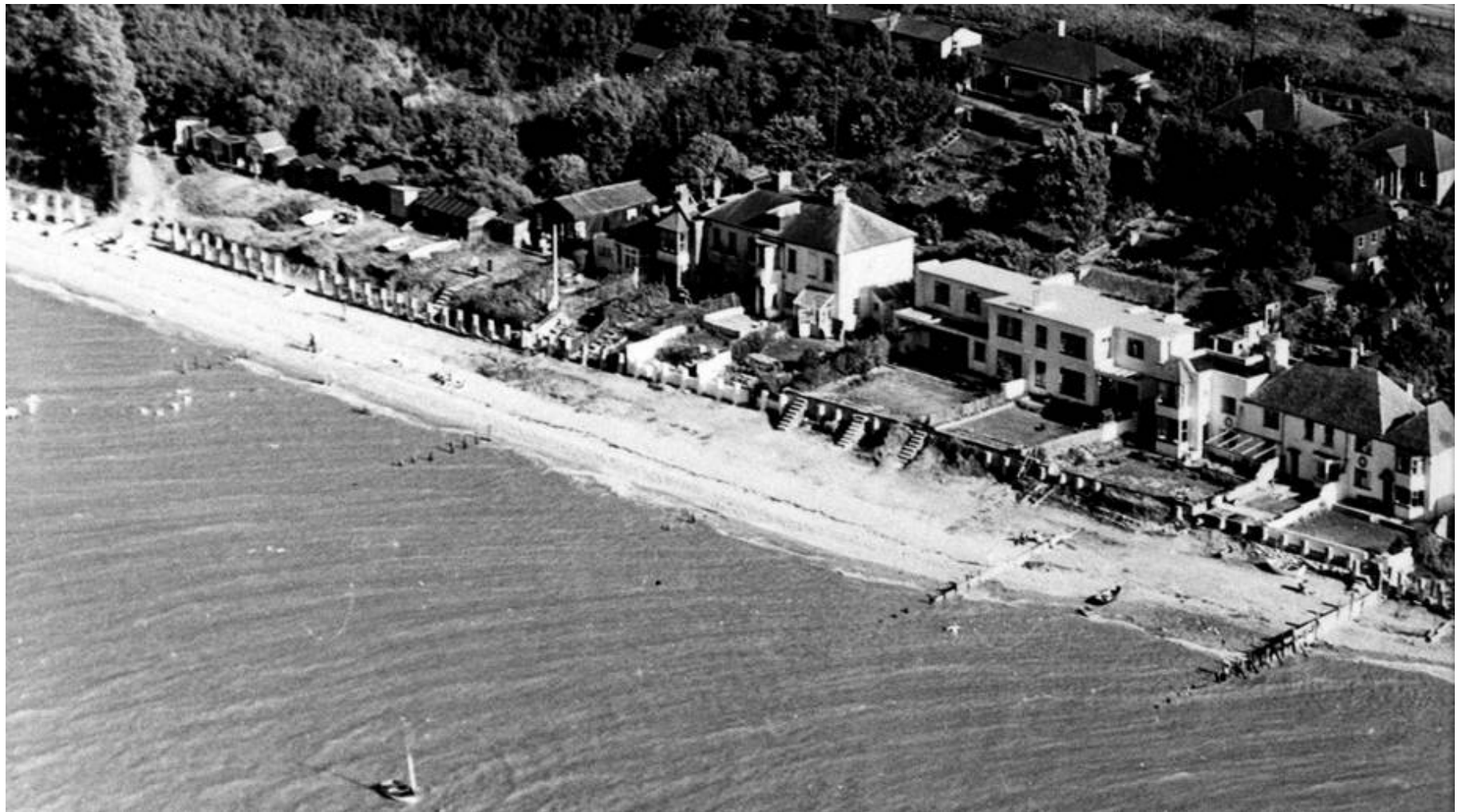
Anti-tank cubes ✗

Anti-tank ditches ✗

Anti-landing obstructions ✗



Aerial photograph 1953



Anti-tank obstacles



Anti-tank obstacles



Coastal crust

2nd LEVEL: SEA FRONT - First line of manned defences

Heavy machine-gun pillboxes ✕

Light artillery ✕

Minefields ✕

Trenches ✕

Weapons pits ✕

Anti-tank guns and rifles ✕



Anti-tank obstacles & machine gun emplacement



Coastal crust

3rd LEVEL: COASTAL REAR –

Second line of manned defences

Rear-facing pillboxes ✕

Cliff-top and dune minefields ✕

Anti-glider trenches and obstacles ✕

Weapons pits and trenches ✕

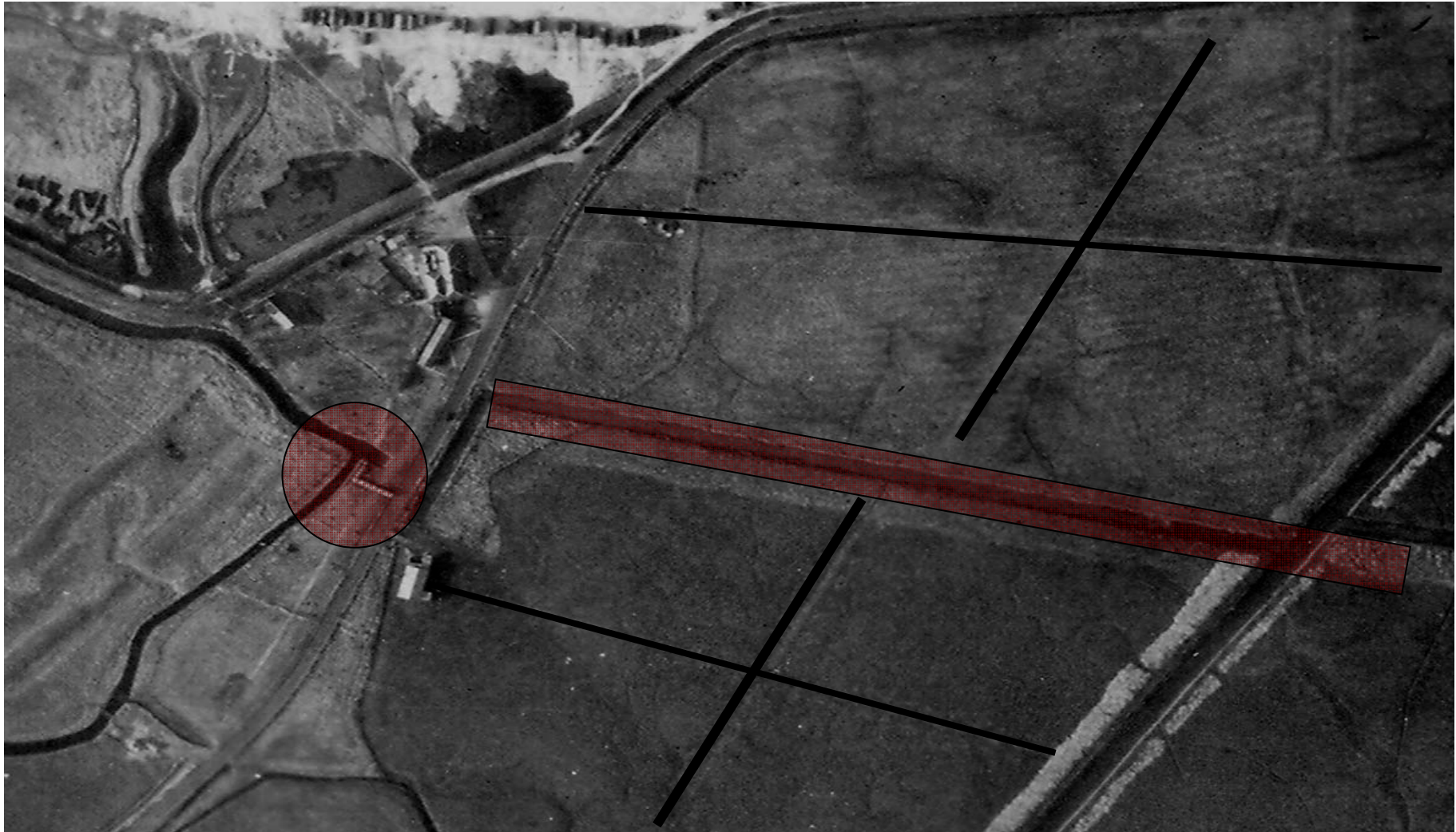


Aerial Photography

Courtesy Canterbury City Council



Aerial photograph 1946 – Courtesy Kent County Council



Anti-tank obstacles



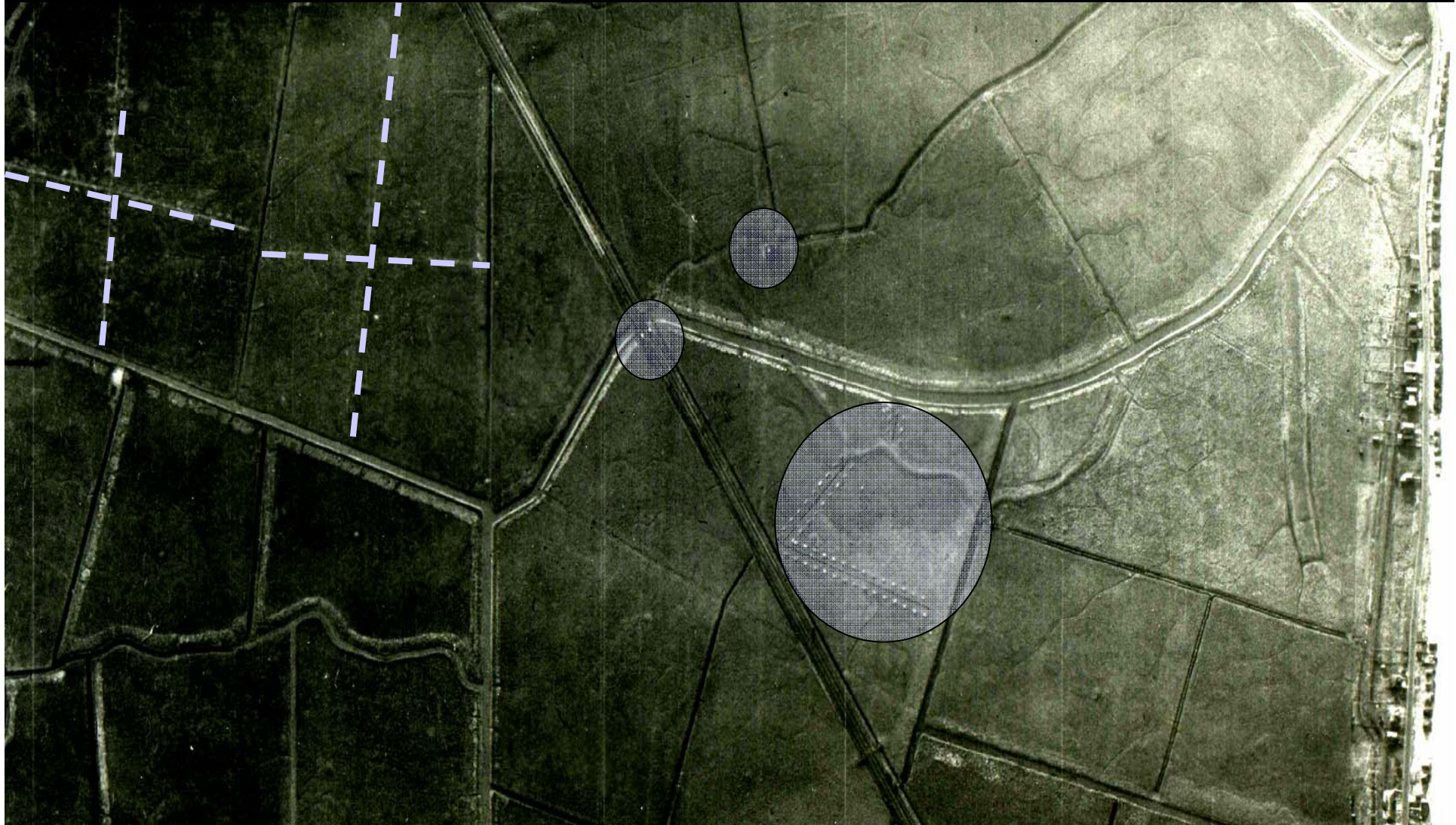
Photoshop



Pillboxes



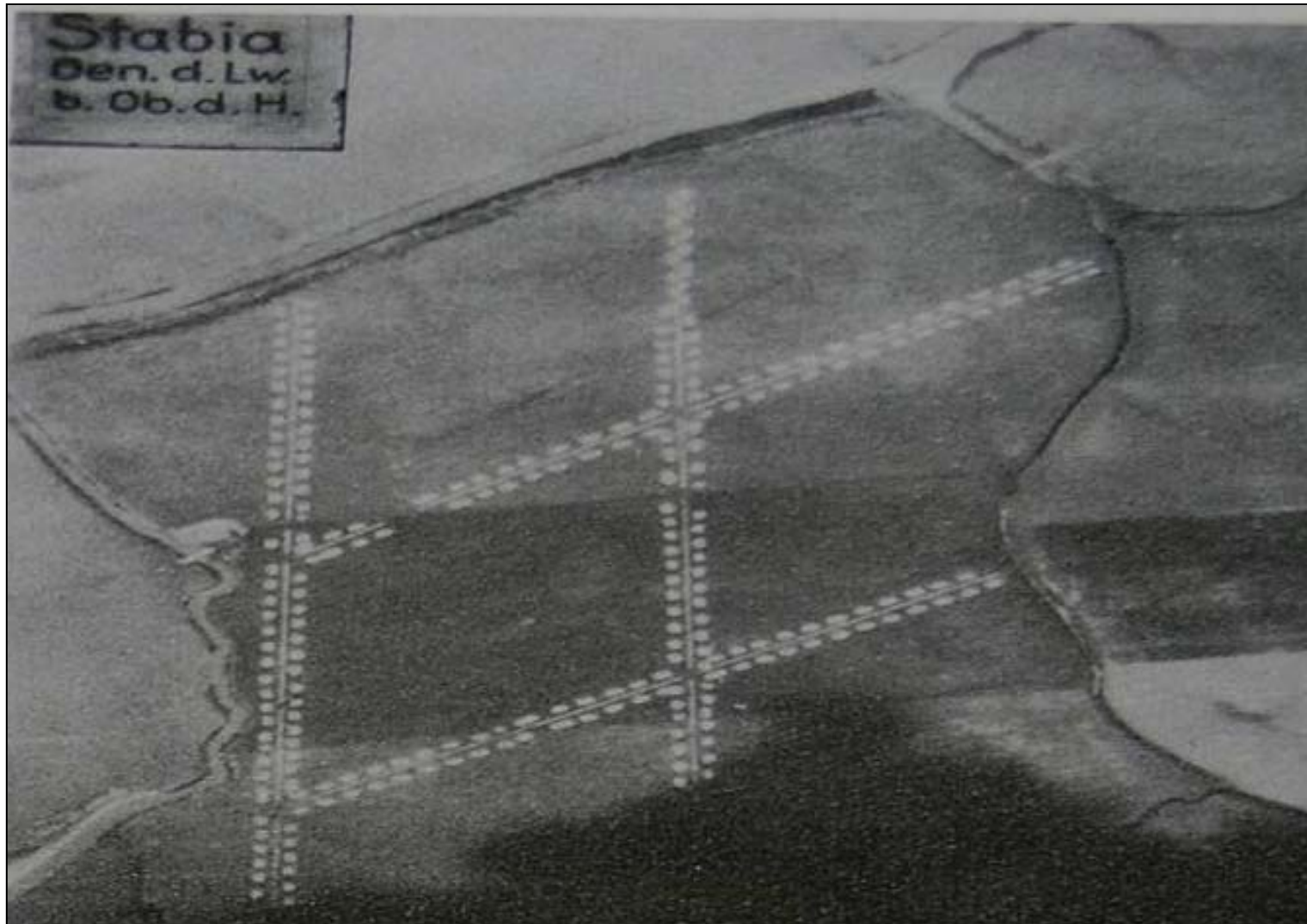
Thorne's Line?



Thorne's Stop Line?



Romney Marshes



3rd Rule of Archaeology

We do not follow maps to buried treasure, and '**X**' never, ever marks the spot...

Or does it..?



Yes it does!

