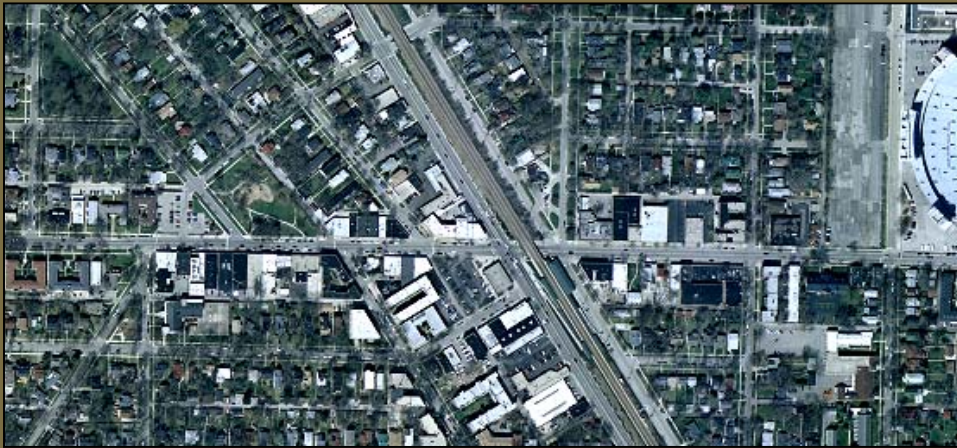


Central Street Corridor Plan & Streetscape Design

Visioning Workshop #2 - City of Evanston, Illinois



The Lakota Group
Gewalt Hamilton Associates
Infrastructure Engineering Inc.

Agenda

- **Opening Comments/Participant Introductions**
- **Process**
- **Corridor Overview**
- **Visual Preference Survey**
- **Break**
- **Round Table Discussions**
- **Table Reports**
- **Summary & Next Steps**

Process Outline

Phase 1: Analysis

- Project Start/Corridor Tour
- Analyses: Land Use/Streetscape/
Transportation/Infrastructure/
Urban Design
- Interviews
- Workshop #1 – west of Hartrey, Feb. 1
- **Workshop #2 – east of Hartrey, Feb. 8**



Feb. 1



Feb. 8

Process Outline

Phase 2: Visioning

- Urban Design Strategies & Concepts
- Streetscape Design Concepts
- Staff Review
- Community Workshop – March 1

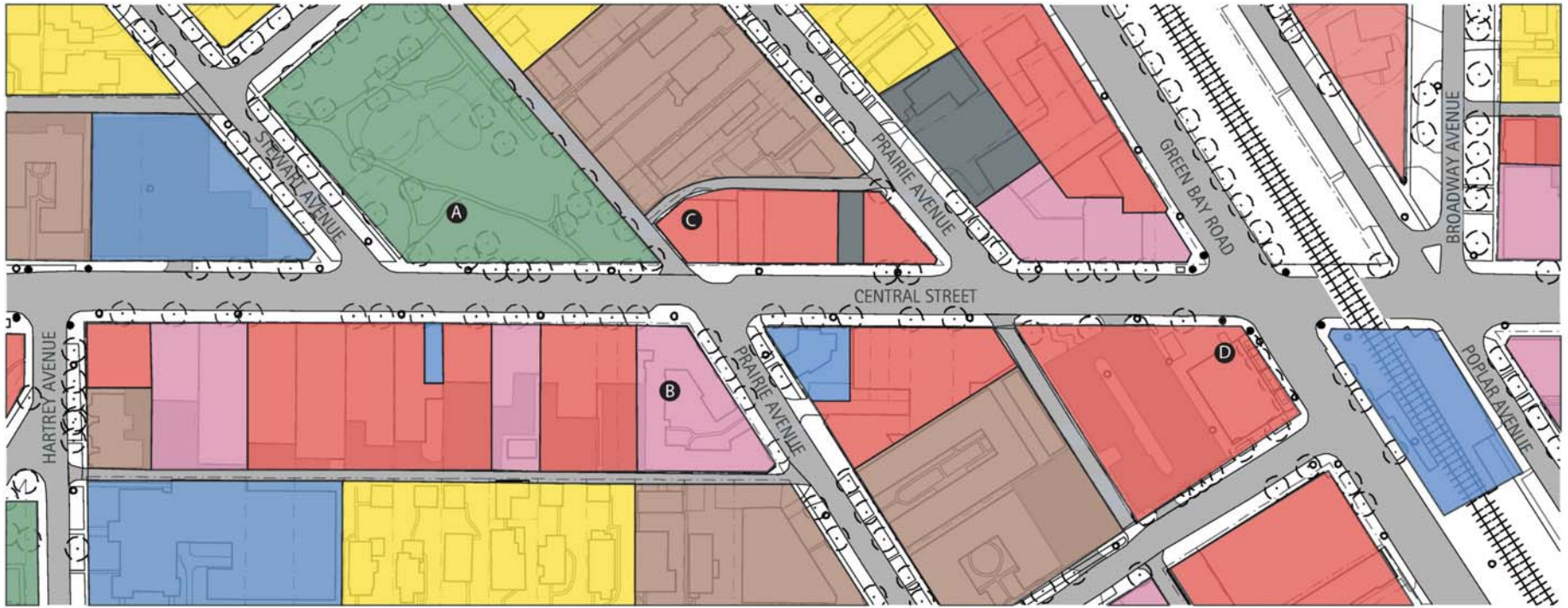
Process Outline

Phase 3: Corridor Plan & Streetscape Design

- Preliminary Corridor Plan
- Preliminary Streetscape Design
- Materials Samples Exhibit
- Preliminary Cost Estimates
- IDOT Review
- Staff Review
- Community Workshop
- Final Corridor Plan & Draft Report
- Preferred Streetscape Design/Booklet
- Staff Review
- Plan Commission/Council Review
- Final Report

Corridor Analysis

Hartrey Avenue to Green Bay Road



Corridor Analysis

Hartrey Avenue to Green Bay Road



**City of Evanston
Central Street
Streetscape Conditions - Draft**

Legend

- Existing Street Trees
- Existing Traffic Light
- Existing Pedestrian Light

Streetscape Conditions

- Poor
- Fair
- Good



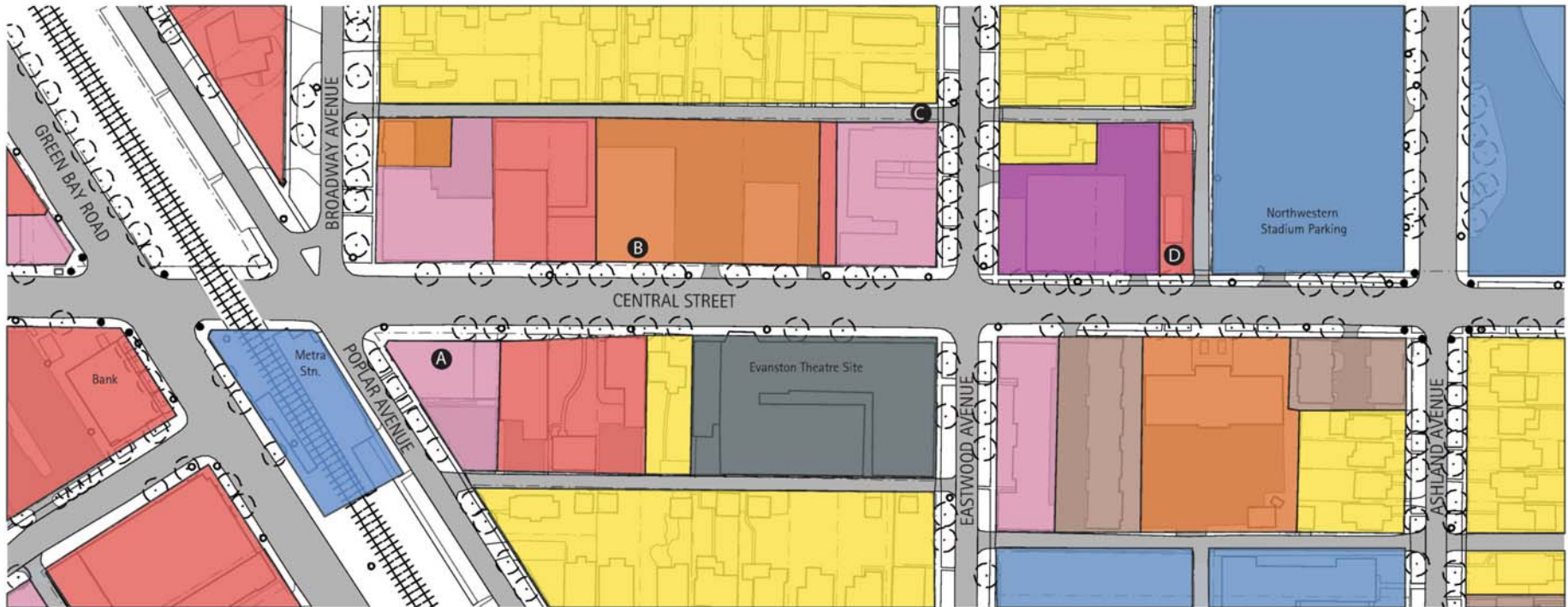
Corridor Analysis

Hartrey Avenue to Green Bay Road



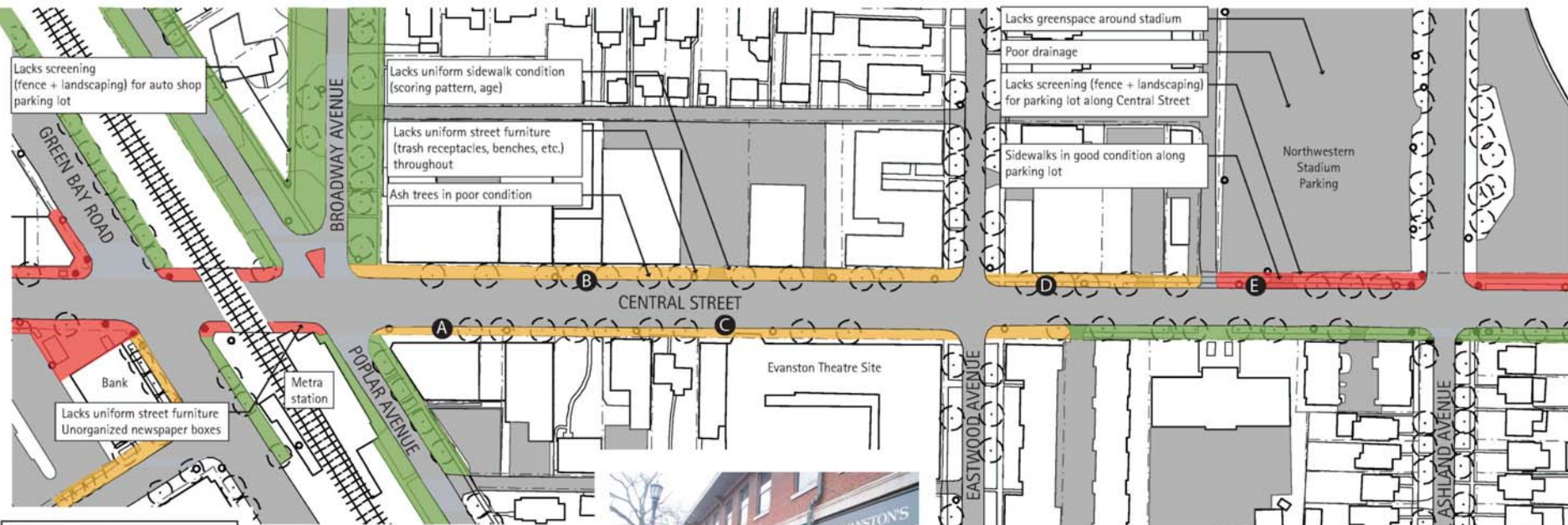
Corridor Analysis

Green Bay Road to Ashland Avenue



Corridor Analysis

Green Bay Road to Ashland Avenue



City of Evanston
Central Street
 Streetscape Conditions - Draft

Legend

- Existing Street Trees
- Existing Traffic Light
- Existing Pedestrian Light

Streetscape Conditions

- Poor
- Fair
- Good



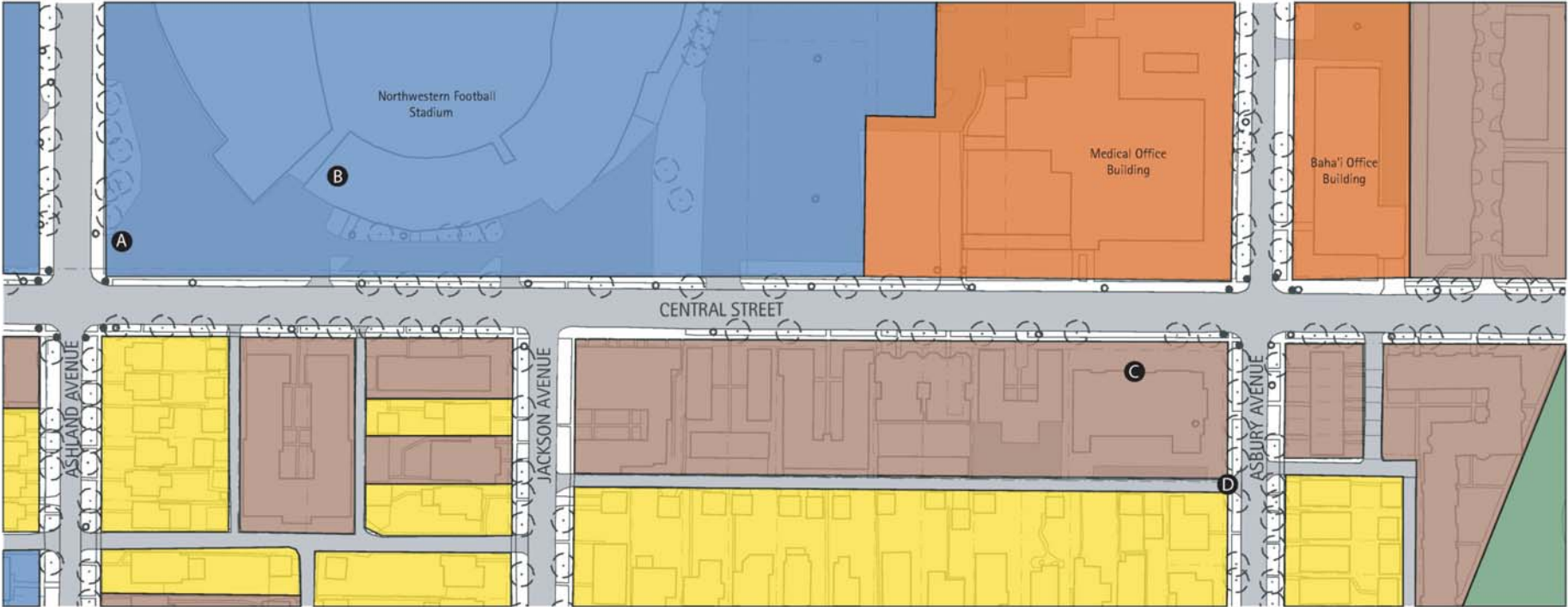
Corridor Analysis

Green Bay Road to Ashland Avenue



Corridor Analysis

Ashland Avenue to Asbury Avenue



Corridor Analysis

Ashland Avenue to Asbury Avenue



City of Evanston
Central Street
Streetscape Conditions - Draft

Legend

- Existing Street Trees
- Existing Traffic Light
- Existing Pedestrian Light

Streetscape Conditions

- Poor
- Fair
- Good



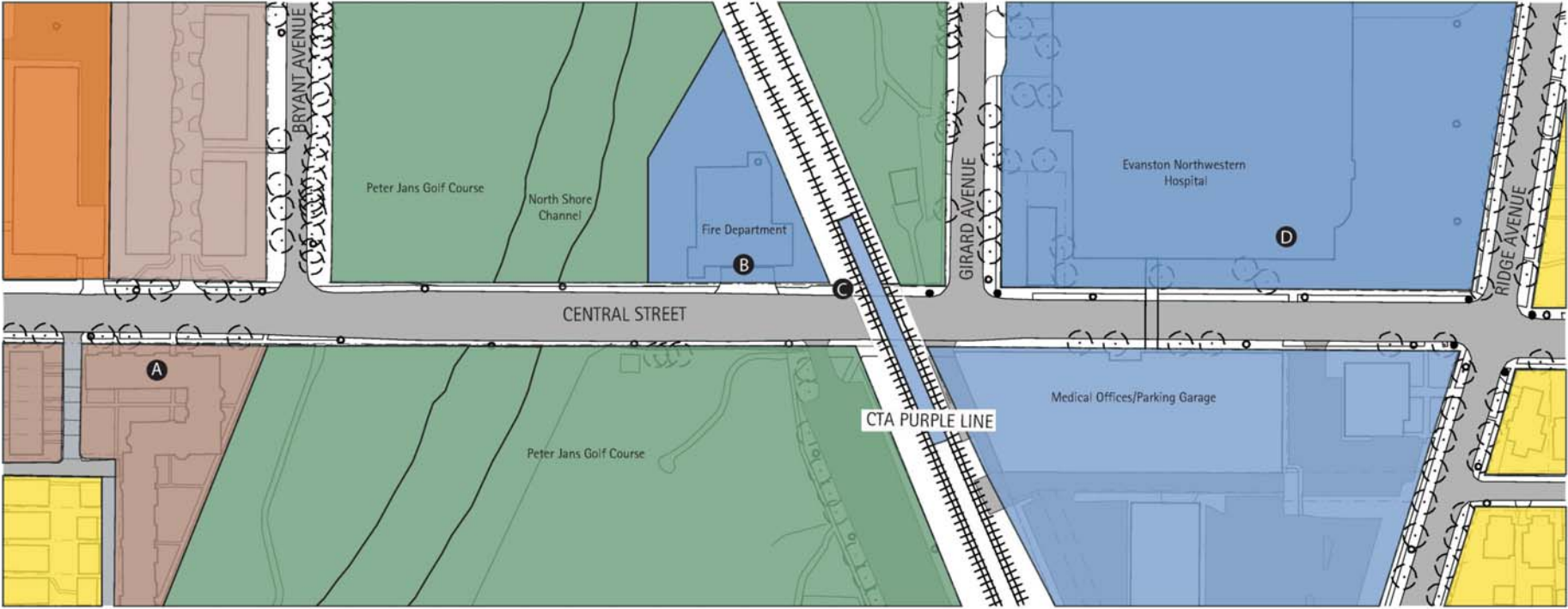
Corridor Analysis

Ashland Avenue to Asbury Avenue



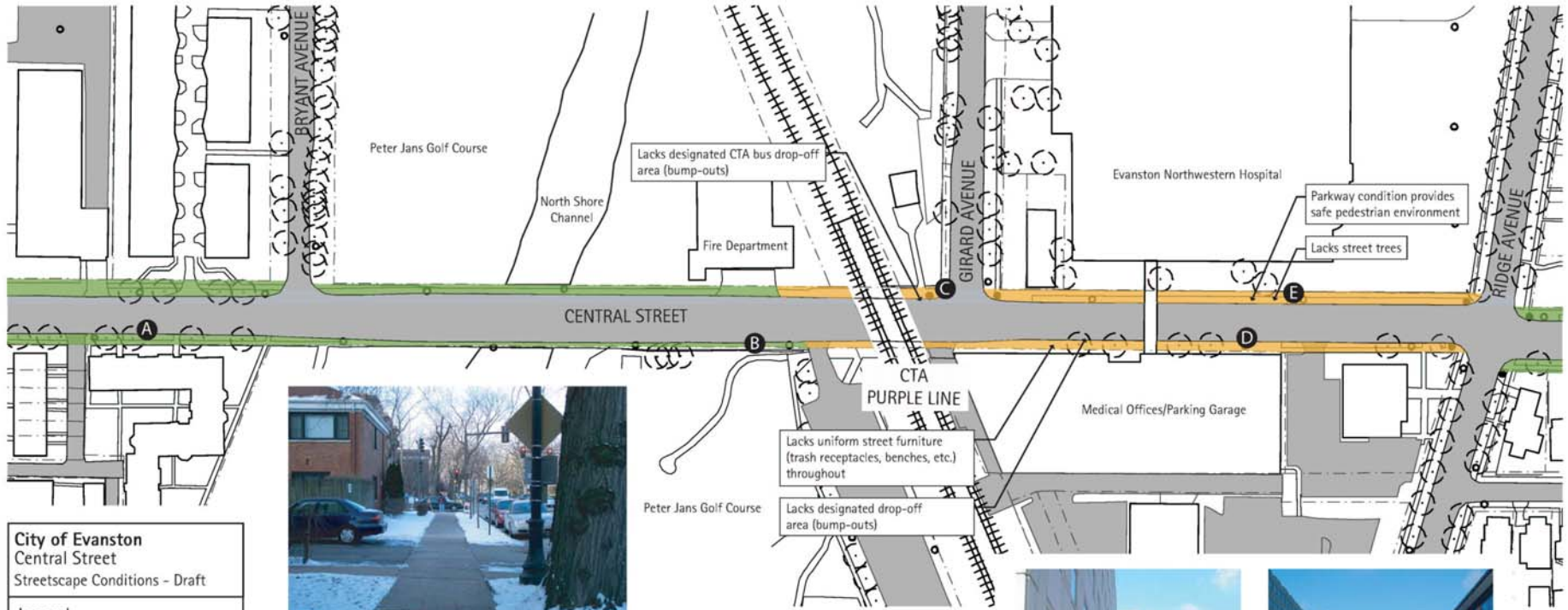
Corridor Analysis

Bryant Avenue to Ridge Avenue



Corridor Analysis

Bryant Avenue to Ridge Avenue



City of Evanston
Central Street
Streetscape Conditions - Draft

Legend

- Existing Street Trees
- Existing Traffic Light
- Existing Pedestrian Light

Streetscape Conditions

- Poor
- Fair
- Good

Corridor Analysis

Bryant Avenue to Ridge Avenue



Visual Preference Survey

Visual Preference Survey

- Images will help identify community preferences for development (setbacks, building design, height) and streetscape design
- Categories
 - Condominiums
 - Retail
 - Mixed-Use
 - Streetscape
- Rate each slide on the hand-out
- Add comments, such as “Too urban,” “Too rural,” “Too high,” or “Too low.”
- Hand-outs will be collected and tallied.

Townhome Example

T-1



Townhome Example

T-2



Townhome Example

T-3



Townhome Example

T-4



Townhome Example

T-5



Townhome Example

T-6



Townhome Example

T-7



Townhome Example

T-8



Condominium Example

C-1



Condominium Example

C-2



Condominium Example

C-3



Condominium Example

C-4



Condominium Example

C-5



Condominium Example

C-6



Condominium Example

C-7



Mixed-Use Example

M-1



Mixed-Use Example

M-2



Mixed-Use Example

M-3



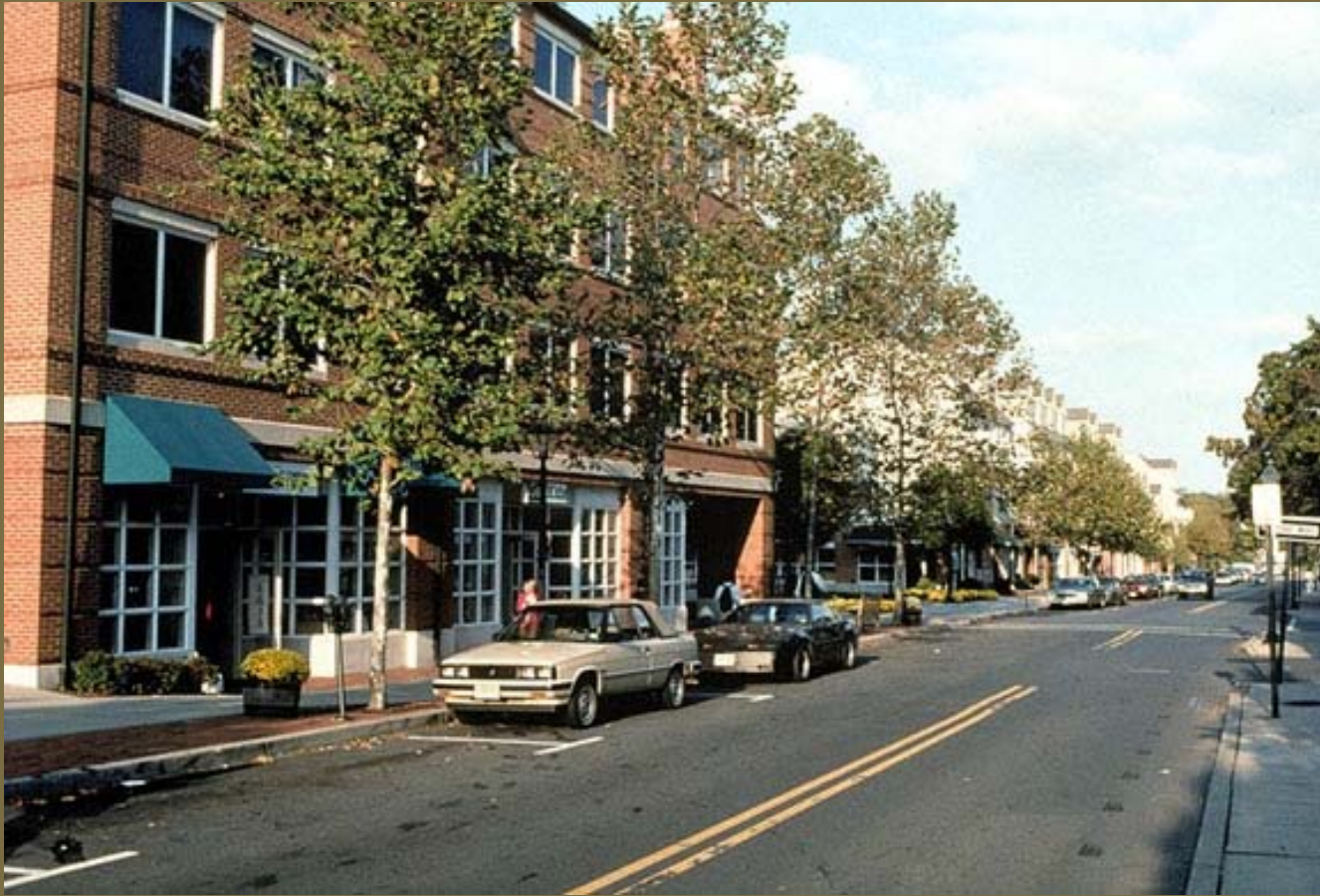
Mixed-Use Example

M-4



Mixed-Use Example

M-5



Mixed-Use Example

M-6



Mixed-Use Example

M-7



Mixed-Use Example

M-8



Mixed-Use Example

M-9



Retail Example

R-1



Retail Example

R-2



Retail Example

R-3



Retail Example

R-4



Retail Example

R-5



Retail Example

R-6



Retail Example

R-7



Retail Example

R-8



Retail Example

R-9



Streetscape Example

S-1



Streetscape Example

S-2



Streetscape Example

S-3



Streetscape Example

S-4



Streetscape Example

S-5



Streetscape Example

S-6



Streetscape Example

S-7



Table Discussions

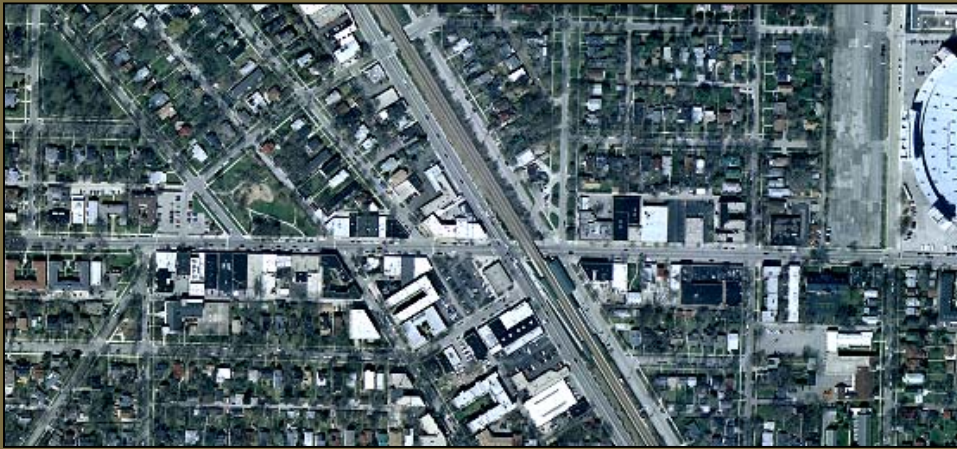
- Thank you for your input.

Next Steps

- **Community Visioning Workshop (east of Hartrey): Feb. 8**
- **Community Workshop: March 1**
(Urban Design Strategies & Concepts, Streetscape Design Concepts)

Central Street Corridor Plan & Streetscape Design

Visioning Workshop #2 - City of Evanston, Illinois



The Lakota Group
Gewalt Hamilton Associates
Infrastructure Engineering Inc.