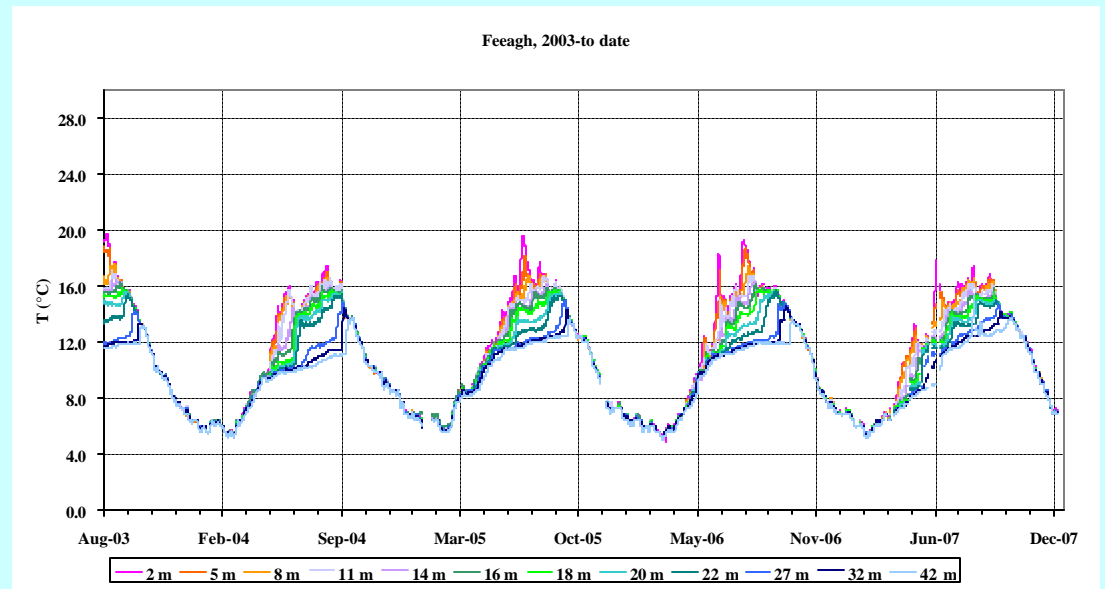
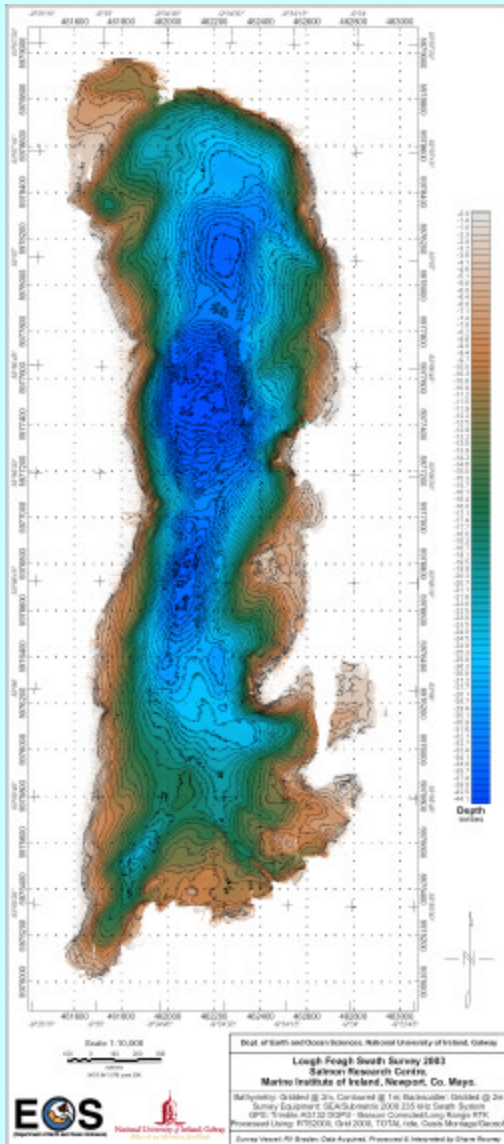


+ 14 water levels  
19 rain gauges

# Lough Feeagh

- Altitude 14 m.a.s.l.
- Mean depth 14.5 m
- Max depth 46 m
- Residence time 0.47 years
- No ice cover
- pH range 5.7-6.9 (2007)
- Temperature 4.8-19.8 (mean 10.5 in 2007)
- Chl a  $1.3 \mu\text{g l}^{-1}$  (2007 mean)
- Colour  $82 \text{ mg l}^{-1} \text{ PtCo}$  (2007 mean)
- TP  $11 \mu\text{g l}^{-1}$  (2006 mean)
- TN  $0.69 \text{ mg l}^{-1}$  (2006 mean)



# Collaboration with Trinity College Dublin

from 1996 to present

*Initial collaboration Norman Allott (TCD) Philip McGinnity (MI)*

1996-1998 LIFE project EU funded

1998-2000 REFLECT EU funded

2001-2003 LIFE II EU funded

2003-2005 CLIME EU funded

2006-2009 ILLUMINATE Irish EPA funded

2008-2009 Rapid Climate Change Programme MI/EPA

- Lake buoy

- CEH design and installation
- Telemetric download (VHF)
- 6 x 12 v batteries (2 week lifespan)

- Met instruments

- Air temperature
- Surface PFD
- Pyranometer
- Wind speed and
- Barometric pressure

- Hydrolab Quanta

- pH
- Conductivity
- Temperature
- DO

- Chelsea minitracka Nephelometer and Fluorometer
- PRT temperature loggers
- Campbell Scientific Logger CR10x
- Data downloaded daily



- River stations
  - CEH design and installation
  - Telemetric download
  - (GSM and line)
  - 2 x 12 v batteries (6 week lifespan)
  - Hydrolab Quanta

- pH

- Conductivity

- Temperature

- DO

Chelsea minitracka Nephelometer

CDOM fluorometer (Seapoint)

Campbell Scientific Logger CR10x

Data downloaded daily

- Hourly measurements

- 2 min measurements

- Data arrays into text files

