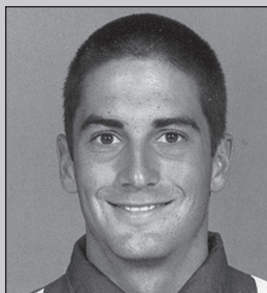
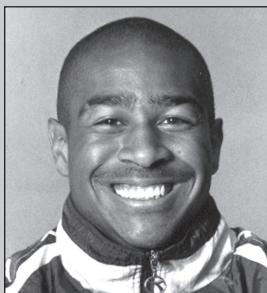


Missouri State Soccer Academic All-Americans



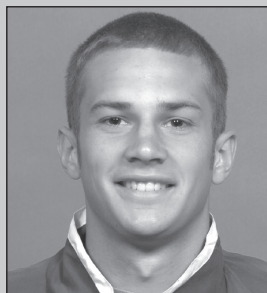
Brad Barnes

1995 CoSIDA Second Team
1996 CoSIDA First Team



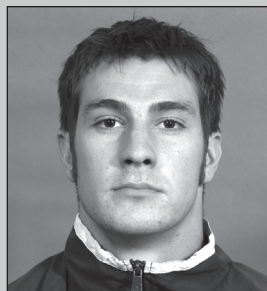
Quentin James

2000 CoSIDA Second Team



Dan Watson

2001 NSCAA Third Team
2002 NSCAA Third Team



Matt Pickens

2002 NSCAA First Team



Doug Lascody

2004 NSCAA Second Team
2004 CoSIDA Third Team



Justin Douglass

2005 NSCAA Second Team
2005 CoSIDA Third Team



Justin Douglass earned Academic All-America honors as a junior in 2005

NSCAA/Adidas All-America Scholar-Athlete

- 2001 Dan Watson, 3rd team
- 2002 Matt Pickens, 1st team
Dan Watson, 3rd team
- 2004 Doug Lascody, 2nd team
- 2005 Justin Douglass, 2nd team

NSCAA All-Region

- 1995 Matt Caution, 1st team
- 1996 Matt Caution, 1st team
Brad Jordan, 2nd team
- 1997 Matt Caution, 1st team
Brad Jordan, 2nd team
- 1998 Mark Modersohn, 1st team
Burch Wylie, 2nd team
- 1999 Mike Williams, 1st team
Jarod Bertrand, 1st team
Mark Modersohn, 2nd team
- 2000 Mark Modersohn, 1st team
Quentin James, 2nd team
Jarod Bertrand, 3rd team
- 2001 Matt Pickens, 2nd team
Dan Watson, 2nd team
Jerod Bertrand, 2nd team
Jamal Sutton, 3rd team
- 2002 Matt Pickens, 1st team
Jamal Sutton, 3rd team
Dan Watson, 3rd team
- 2003 Matt Pickens, 1st team
Jamal Sutton, 3rd team
- 2004 Doug Lascody, 1st team
- 2005 Justin Douglass, 1st team

CoSIDA Academic All-America

- 1995 Brad Barnes, 2nd team
- 1996 Brad Barnes, 1st team
- 2000 Quentin James, 2nd team
- 2004 Doug Lascody, 3rd team
- 2005 Justin Douglass, 3rd team

CoSIDA Academic All-District VII

- 1994 Brad Barnes
- 1995 Brad Barnes
- 1996 Brad Barnes
- 2000 Quentin James
- 2002 Jed Hohlbein
- 2003 Ryan Crawford
Doug Lascody
- 2004 Doug Lascody
Jim Levesque
- 2005 Justin Douglass
Ryan Crawford
- 2006 Lance Parker
Joe Welch
Brett Williams

MVC Academic All-Conference

- 1992 John Fulhorst, first team
- 1994 Brad Barnes, 1st team
Cliff Curtis, 1st team
Cory Carr, honorable mention
- 1995 Brad Barnes, 1st team
Brad Jordan, 1st team
Cory Carr, honorable mention
Cliff Curtis, honorable mention
Kevin Reilly, honorable mention
Peter White, honorable mention
- 1996 Brad Barnes, 1st team
Cliff Curtis, 1st team
Tim Sleeper, 1st team
Cory Carr, honorable mention
Paul Jost, honorable mention
Jeff Freeman, honorable mention
Kevin Reilly, honorable mention
- 1997 Paul Jost, 1st team
Vince Piñon, honorable mention
- 1998 Paul Jost, 1st team

- Mike Williams, 1st team
- Mike Cortinas, honorable mention
- Conor Haseltine, honorable mention
- Quentin James, honorable mention
- Kevin Reilly, honorable mention
- 1999 Mike Cortinas, 1st team
Quentin James, 1st team
- 2000 Conor Haseltine, 1st team
Quentin James, 1st team
Mark Modersohn, 1st team
- 2001 Dan Watson, 1st team
- 2002 Dan Watson, 1st team
Matt Pickens, 1st team
Kevin Hansen, honorable mention
- 2003 Doug Lascody, 1st team
Matt Pickens, 1st team

- Kevin Hansen, honorable mention
- Jon Watson, honorable mention
- 2004 Doug Lascody, 1st team
Jim Levesque, 1st team
Jon Watson, honorable mention
- 2005 Justin Douglass, 1st team
Ryan Crawford, honorable mention
- 2006 Justin Douglass, 1st team
Lance Parker, 1st team
Joe Welch, 1st team
Brett Williams, honorable mention

MCC Academic All-Conference

- 1989 Jim Thwing, 1st team

Soccer Bears in the Classroom:

- Eight National Coaches Association of America Team Academic Awards in the last 11 years
- Five NSCAA All-America Scholar-Athletes since 2001
- Five CoSIDA Academic All-America award winners from 1995-2006
- 47 Missouri Valley Conference Scholar Athletes in the last 13 years
- One player received the 2006-07 MVC Commissioner's Academic Excellence Award
- Nine players named to the 2006-07 MVC Honor Roll

Records and Review

2006 Season in Review MSU Men's Soccer Records

| | |
|-------|--|
| 20 | 2006 Season in Review |
| 21 | 2006 Standings and Awards |
| 22 | 2006 MSU Men's Soccer Results 2006 MSU Men's Soccer Statistics |
| 23 | MSU Career Leaders |
| 24 | MSU Single-Season Leaders MSU Yearly Individuals Leaders |
| 25-26 | MSU Year-by-Year Results |
| 27 | MSU Men's Soccer Honors |
| 28 | MSU Team Honors |
| 29 | MSU All-time Letterwinners MSU Record Against All Opponents |
| 30 | 2006 MSU Opponents Centenary North Florida Central Arkansas Western Illinois Oral Roberts Tulsa San Diego State UNLV Illinois-Chicago IUPUI SMU Alabama A&M |
| 31 | Western Kentucky Eastern Illinois Bradley Creighton UMKC Evansville Drake |
| 32 | Missouri State Alumni News |



**Missouri
State™**

2007 Men's Soccer Media Guide

2006 Season Review

Bears Finish Up-and-Down Season at .500

The Missouri State men's soccer team started strong for the third consecutive season, opening 5-1-1, but the Bears finished the season losing four of their last five, including a loss to Eastern Illinois in the quarterfinals of the State Farm Missouri Valley Conference Tournament, to finish the campaign 8-8-3. The Bears began play on-campus at Plaster Field and defended the home field admirably, going 4-0-2, including a thrilling 1-1 double overtime tie with conference tournament champion and NCAA qualifier Creighton in front of a school-record 2,102 fans.

The Bears opened the season on the field turf of Plaster Field against Oral Roberts on Aug. 25. Goalkeeper Lance Parker gave an early indication of his dominance to come, picking up his first shutout as the Bears and Golden Eagles tied 0-0 in double overtime. Two nights later, on Aug. 27, MSU traveled to the University of Missouri-Kansas City and defeated the Kangaroos 2-1 for their first victory of the season. Freshman Will Ziegahn scored the first goal of the season and first of his career and junior Yanik Joseph scored the game winner in the second half to lead the Bears to the win.

Missouri State opened the month of September on the road at the Ameritas Classic hosted by Creighton in Omaha, Neb. The Bears suffered their first loss of the season on Sept. 1 in heart-breaking fashion, losing to Fairleigh Dickinson in double overtime, 2-1. Junior college transfer Omar Shoucair scored his only goal of the season against the Knights, who were nationally ranked after playing MSU. The Bears rebounded and defeated Big East Conference member Georgetown, 2-0, on Sept. 3. Senior Justin Douglass and junior Ryan Anderson scored first

half goals and Parker posted another shutout for the Bears. Anderson and Douglass earned all-tournament honors for their play.

The Bears returned home to host the Quality Inn & Suites/Diadora Tournament on Sept. 8 and 10, and MSU captured a share of the tournament title with a 2-0 mark. The Bears defeated Air Force, 3-1, behind two goals by junior Danny May, including the game winner less than two minutes into the second half to break a halftime tie. Sophomore Justin Alford notched his first goal of the season in the first half. MSU then easily handled Central Arkansas, 4-0, as the Bears scored twice in each half. May again had the game winner, and Douglass, freshman Kyle Windmueller, and junior Michael Bennett each added a goal. Douglass, Parker, Anderson, and May were named to the all-tournament team as the Bears shared the tournament title with Evansville.

Missouri State traveled to the Evansville ProRehab Aces Soccer Classic the following weekend and came away with a 1-0-1 record. Sophomore Joe Welch scored his only goal of the season in overtime for the game winner in the 98th minute as the Bears defeated Stony Brook, 2-1, on Sept. 15. Alford notched his second goal of the season in the 72nd minute for MSU. The Bears outshot North Florida, 20-9, but could not find the back of the net as the teams played to a 0-0 double overtime tie on Sept. 17. The 1-0-1 mark was good enough to capture the tournament title. Parker, Alford, Anderson, and junior defender Andy Cooper were all-tournament team selections, with Parker bringing home the Defensive MVP award.

The 5-1-2 Bears traveled to Peoria, Ill., for the Holiday Inn City Centre Classic the following weekend, Sept. 22 and 23. MSU lost both matches by the count of 1-0 despite an advantage in shots in both contests. The Bears fell to Alabama A&M on a first half goal and eight Bulldog saves and lost to Robert Morris despite holding a 26-6 shot advantage. Parker and sophomore defender Kellington Boddie took home all-tournament honors for the Bears.

MSU dropped its third straight match by a 1-0 score, falling at Saint Louis on Sept. 26. Parker was solid in goal despite taking the loss, as he turned back eight shots to keep the Bears in the match. However, the Bears' offense struggled as MSU was shut out for the fourth consecutive match.

The Bears closed out September with their conference opener against Eastern Illinois on Sept. 30 at Plaster Field. The freshman Ziegahn scored a goal in each half and Parker recorded his fifth shutout of the season to lead the Bears. Parker was named MVC Defensive Player of the Week for his play in the Bears' two matches during the week.

On Wednesday, Oct. 4, Missouri State played host to preseason conference favorite and national power Creighton. Behind a school-record 2,102 fans, Creighton took a 1-0 second half lead and looked to leave with a win, but the senior Douglass scored the equalizer in

the 88th minute on a header and Welch made a game-saving clear of a sure goal in overtime to preserve a tie with the Bluejays. The Bears carried the momentum to Bradley and defeated the Braves in Peoria for the first time since 1999, 2-0, on Oct. 7. The freshman Windmueller scored the game-winning goal in the first half and junior Brett Williams scored the first goal of his career in the second half to lead the Bears. Senior Kyle Hopson assisted on both goals and Parker picked up another shutout, his sixth of the season.

The Bears' momentum was stopped on the road at Evansville on Oct. 11, as the Purple Aces scored in the 13th minute and held on for a 1-0 victory. The decision marked the fourth time the Bears fell by the same count of 1-0.

Missouri State returned home on Oct. 14 for the final home match of the season. With seniors Douglass, Hopson, and Brian Pasierb playing in the final home outings of their careers, it was junior Ryan Anderson who was the hero as he scored the match's only goal in overtime to lift the Bears to a 1-0 victory. Another junior, Parker, was again fantastic in goal, as he recorded his seventh shutout of the season. Anderson earned the league's Offensive Player of the Week award for his game winner against the Hilltoppers.

The overtime victory would prove to be the last high mark of the season as the Bears finished conference play with a 3-1 setback at Drake on Oct. 21. To make matters worse, MSU lost Parker to an injury in the second half, which would be his last action of the season. The Bears finished the regular season with a nonconference loss at Western Illinois, 2-0, in Macomb on Oct. 24.

With a 3-2-1 conference mark, the Bears took the number three seed into the State Farm MVC Tournament in Peoria, Ill. MSU took on sixth-seeded Eastern Illinois on Nov. 1 in a quarterfinals rematch of the Bears' 2-0 victory in Springfield earlier in the season. Anderson scored a goal in the closing minutes of the first half to cut the Panthers' lead to 2-1 at halftime, but EIU added a second half goal and revenged the earlier loss with a 3-1 win to end the Bears' season.

The 2006 campaign turned out to be a season of peaks and valleys, with the year unfortunately ending with the latter as the Bears lost their final three matches. Their three-match conference streak that included wins over conference regular season co-champion Bradley and Eastern Illinois, and a tie against MVC tournament champion and NCAA qualifier Creighton was the team's best stretch of play. This three-match stretch was preceded by three consecutive 1-0 defeats after a 5-1-2 start to the season.

Despite the tough ending to the season, the Bears can take many positives from the 2006 season. MSU held opponents to a MVC regular season-low 15 goals and had the best goals-against average (0.79) in the league. The team's seven shutouts tied for second-most in



Defender Justin Douglass started 69 matches during his career at Missouri State, and was a two-time All-MVC first team selection.

the regular season in MVC play. MSU's team goals-against average and save percentage ranked among the top-20 in the country for much of the regular season. On Oct. 10, the Bears ranked eighth as a team in save percentage and MSU was ninth nationally in goals-against-average on Oct. 17 for the team's best rankings of the season.

Benefitting from the team's strong defense was the goalkeeper Parker. The junior led the MVC during the regular season in goals-against average (0.569), save percentage (.845), allowed the fewest goals (9) of any goalkeeper in the conference, and tied for the league lead with seven regular season shutouts. Parker set the Missouri State single-season record with his 0.57 goals-against average and the nine goals he allowed are fewest in a season in school history. His seven shutouts tie for third-most in a season. Parker finished the season ranked seventh nationally in goals-against average and 11th in save percentage.

Six members of the team earned individual recognition. Douglass and Anderson repeated as First Team All-MVC selections, the only players in the conference to be selected in back-to-back seasons. Douglass scored three goals and added three assists to go along with his strong play on the backline that held opponents to an MVC regular season low 15 goals. Anderson followed up his 2005 season in which he was the MVC Co-Player of the Year with another solid season, as he led the team

in goals and points, with four and 10, respectively, and led the MVC in shots, with 89. Parker earned Second Team All-MVC honors and was a finalist for the MVC Defensive Player of the Year award. Hopson and Cooper earned All-MVC honorable mention status. Hopson led the Bears with seven assists, which tied for second-best in the MVC. Cooper was a physical force on the backline that posted seven shutouts. Defender Ryan Hennessy was named to the MVC All-Freshman Team after starting 16 matches for the Bears on the backline in his first season. Anderson and Douglass were also named to the NSCAA/adidas All-Midwest Region Second Team.

The Bears found success in the classroom as well. Parker, Williams, and Welch were selected to the CoSIDA/ESPN the Magazine All-District VII team. Douglass joined Parker and Welch on the MVC Scholar-Athlete First Team, with Williams receiving honorable mention. Missouri State tied with Drake for the most first team selections in the conference and MSU's four total selections tied for second-best.

The loss of Douglass, Hopson, and Pasierb will be significant, as the trio combined to start 119 matches throughout their careers. However, the Bears return players accountable for 19 of the 22 goals scored in 2006. Parker will return to challenge his record-setting season of 2006. The 2007 team should feature seven seniors with extensive playing time and a wealth of underclassmen with experience. Fill-

ing the void left by Douglass on the backline and building depth at midfield with the loss of Hopson and Pasierb will be the challenges facing the 2007 Bears.



Midfielder Kyle Hopson earned All-MVC Honorable Mention as a senior in 2006.

2006 Standings and Awards

| 2006 MVC Final Standings | | |
|--------------------------|--------------|--------------|
| Team | MVC | Overall |
| Creighton | 4-1-1 | 13-5-3 |
| Bradley | 4-1-1 | 8-8-4 |
| Missouri State | 3-2-1 | 8-8-3 |
| Drake | 2-1-3 | 6-7-6 |
| Evansville | 2-4-0 | 9-8-0 |
| Eastern Illinois | 1-3-2 | 11-7-2 |
| Western Kentucky | 0-4-2 | 4-9-3 |

State Farm MVC Tournament Results

Quarterfinals (11/9)

Eastern Illinois 3, Missouri State 1

Drake 2, Evansville 0

Semifinals (11/11)

Creighton 2, Eastern Illinois 0

Bradley 0, Drake 0 (BU wins 5-3 on PKs)

Finals (11/13)

Creighton 2, Bradley 1 (OT)

MVC in the NCAA Tournament

First Round (11/13)

Washington 3, Creighton 0

2006 Individual Accolades

2006 MVC All-Conference Selections

| | |
|-------------------------|-------------------|
| Ryan Anderson, F, Jr. | First Team |
| Justin Douglass, D, Sr. | First Team |
| Lance Parker, GK, Jr. | Second Team |
| Andy Cooper, D, Jr. | Honorable Mention |
| Kyle Hopson, MF, Sr. | Honorable Mention |
| Ryan Hennessy, D, Fr. | All-Freshman |

NSCAA/adidas All-America

Ryan Anderson Second Team

2006 NSCAA/adidas All-Midwest Region

Ryan Anderson Second Team
Justin Douglass Second Team

MVC All-Tournament Team

Justin Douglass, D, Sr.

MVC Players of the Week

Lance Parker Defensive Oct. 3
Ryan Anderson Offensive Oct. 17

NSCAA/adidas Scholar All-North/Central Region

Justin Douglass First team

CoSIDA Academic All-District VII

Lance Parker, GK, Jr. First Team
Joe Welch, D, So. First Team
Brett Williams, D, Jr. First Team

MVC Scholar-Athlete Team

Justin Douglass, D, Sr. First Team
Lance Parker, GK, Jr. First Team

Joe Welch, D, So. First Team
Brett Williams, D, Jr. Honorable Mention

MVC Scholar Athlete of the Week

Justin Douglass Sept. 13

2006 NSCAA Final Men's National Soccer Poll

School Record

| | |
|----------------------------------|---------------|
| 1. UC Santa Barbara | 17-7-0 |
| 2. UCLA | 14-6-4 |
| 3. Wake Forest | 18-3-4 |
| 4. Virginia | 17-4-1 |
| 5. Duke | 18-4-1 |
| 6. Notre Dame | 15-6-2 |
| 7. Santa Clara | 13-5-5 |
| 8. Northwestern | 14-8-0 |
| 9. Indiana | 15-5-2 |
| 10. Maryland | 16-5-1 |
| 11. SMU | 17-2-4 |
| 12. California | 13-6-1 |
| 13. Clemson | 13-5-2 |
| 14. Old Dominion | 14-6-2 |
| 15. Towson | 15-2-3 |
| 15. UNC-Greensboro | 16-8-1 |
| 15. Lehigh | 15-2-3 |
| 18. West Virginia | 15-3-3 |
| 19. North Carolina | 11-6-3 |
| 20. Washington | 13-7-1 |
| 21. Saint Louis | 13-5-2 |
| 22. New Mexico | 14-4-3 |
| 23. St. John's | 14-6-2 |
| 24. Harvard | 14-5-0 |
| 25. Fairfield | 15-6-1 |
| 25. Illinois-Chicago | 13-3-5 |
| 25. Rhode Island | 12-5-6 |

represents 2006 opponents

2006 Missouri State Men's Soccer Results (8-8-3)

| Date | Opponent | W-L-T | Score | Record | Shots | | SOG | | Saves | | MSU Goals | Att. |
|-------|---------------------------|-------|------------|--------|-------|------|-----|------|-------|------|---|------|
| | | | | | MSU | Opp. | MSU | Opp. | MSU | Opp. | | |
| 8/25 | Oral Roberts | T | 0-0 (2ot) | 0-0-1 | 20 | 18 | 8 | 4 | 4 | 8 | | 505 |
| 8/27 | at Missouri-Kansas City | W | 2-1 | 1-0-1 | 7 | 19 | 6 | 5 | 4 | 4 | Will Ziegahn (1), <u>Yanik Joseph</u> (1) | 203 |
| 9/1 | vs. Fairleigh Dickinson I | L | 1-2 (2 ot) | 1-1-1 | 13 | 29 | 3 | 9 | 7 | 2 | Omar Shoucair (1) | 1120 |
| 9/3 | vs. Georgetown I | W | 2-0 | 2-1-1 | 18 | 6 | 8 | 1 | 1 | 6 | <u>Justin Douglass</u> (1), Ryan Anderson (1) | 171 |
| 9/8 | Air Force \$ | W | 3-1 | 3-1-1 | 25 | 6 | 12 | 3 | 2 | 9 | Justin Alford (1), <u>Danny May</u> (1,2) | 616 |
| 9/10 | Central Arkansas \$ | W | 4-0 | 4-1-1 | 18 | 12 | 9 | 4 | 4 | 5 | <u>Danny May</u> (3), Justin Douglass (2), Kyle Windmueller (1), Michael Bennett(1) | 528 |
| 9/15 | vs. Stony Brook @ | W | 2-1 (ot) | 5-1-1 | 14 | 11 | 5 | 4 | 3 | 3 | Justin Alford (2), <u>Joe Welch</u> (1) | 295 |
| 9/17 | vs. North Florida @ | T | 0-0 (2 ot) | 5-1-2 | 20 | 9 | 5 | 4 | 4 | 5 | | 135 |
| 9/22 | vs. Alabama A&M % | L | 0-1 | 5-2-2 | 15 | 13 | 8 | 6 | 5 | 8 | | 75 |
| 9/23 | vs. Robert Morris (Pa.) % | L | 0-1 | 5-3-2 | 26 | 6 | 11 | 4 | 3 | 11 | | 75 |
| 9/26 | at Saint Louis | L | 0-1 | 5-4-2 | 5 | 15 | 1 | 9 | 8 | 1 | | 1374 |
| 9/30 | Eastern Illinois * | W | 2-0 | 6-4-2 | 15 | 16 | 4 | 5 | 5 | 2 | <u>Will Ziegahn</u> (2,3) | 614 |
| 10/4 | Creighton * | T | 1-1 | 6-4-3 | 14 | 14 | 1 | 4 | 3 | 0 | Justin Douglass (3) | 2102 |
| 10/7 | at Bradley * | W | 2-0 | 7-4-3 | 15 | 12 | 4 | 4 | 4 | 2 | <u>Kyle Windmueller</u> (2), Brett Williams (1) | 908 |
| 10/11 | at Evansville * | L | 0-1 | 7-5-3 | 10 | 11 | 2 | 4 | 3 | 2 | | 341 |
| 10/14 | Western Kentucky * | W | 1-0 (ot) | 8-5-3 | 21 | 7 | 4 | 4 | 4 | 3 | <u>Ryan Anderson</u> (2) | 717 |
| 10/21 | at Drake * | L | 1-3 | 8-6-3 | 11 | 9 | 3 | 4 | 1 | 2 | Ryan Anderson (3) | 237 |
| 10/24 | at Western Illinois | L | 0-2 | 8-7-3 | 9 | 13 | 2 | 8 | 6 | 2 | | 57 |
| 11/1 | vs. Eastern Illinois # | L | 1-3 | 8-8-3 | 15 | 22 | 7 | 10 | 7 | 6 | Ryan Anderson (4) | |

*Missouri Valley Conference matches (4-3); ! Creighton Tournament (1-1); \$ Missouri State Tournament (2-0); @ Evansville Tournament (1-0-1); % Bradley Tournament (0-2); # State Farm MVC Tournament (0-1); Underline indicates game-winning goal; Number following goal scorer is season goal total.

2006 Missouri State Men's Soccer Statistics

| Player | MP-MS | G | A | Pts | Shots | SOG | GW |
|--------------------------|-------|---|---|-----|-------|-----|----|
| 4 Ryan Anderson, Jr. | 19-19 | 4 | 2 | 10 | 89 | 32 | 1 |
| 7 Justin Douglass, Sr. | 19-19 | 3 | 3 | 9 | 23 | 5 | 1 |
| 14 Will Ziegahn, Fr. | 19-2 | 3 | 3 | 9 | 13 | 7 | 1 |
| 8 Kyle Hopson, Sr. | 19-18 | 0 | 7 | 7 | 12 | 3 | 0 |
| 9 Danny May, Jr. | 19-18 | 3 | 0 | 6 | 32 | 11 | 2 |
| 3 Justin Alford, So. | 19-19 | 2 | 2 | 6 | 27 | 11 | 0 |
| 5 Kyle Windmueller, Fr. | 19-7 | 2 | 1 | 5 | 15 | 7 | 1 |
| 11 Yanik Joseph, Jr. | 16-12 | 1 | 2 | 4 | 26 | 9 | 1 |
| 22 Michael Bennett, Jr. | 11-0 | 1 | 1 | 3 | 8 | 5 | 0 |
| 19 Brett Williams, Jr. | 19-8 | 1 | 0 | 2 | 8 | 3 | 0 |
| 10 Omar Shoucair, Jr. | 15-0 | 1 | 0 | 2 | 8 | 3 | 0 |
| 12 Joe Welch, So. | 17-9 | 1 | 0 | 2 | 2 | 1 | 1 |
| 17 Brian Pasierb, Sr. | 15-11 | 0 | 0 | 0 | 12 | 3 | 0 |
| 16 Ryan Hennessy, Fr. | 18-16 | 0 | 0 | 0 | 8 | 1 | 0 |
| 20 Ronnie Franklin, Fr. | 17-0 | 0 | 0 | 0 | 4 | 1 | 0 |
| 13 Andy Cooper, Jr. | 19-19 | 0 | 0 | 0 | 2 | 0 | 0 |
| 2 Eric Wimberley, Fr. | 11-0 | 0 | 0 | 0 | 2 | 1 | 0 |
| 24 Trey Davis, Jr. | 6-1 | 0 | 0 | 0 | 0 | 0 | 0 |
| 18 Nick Dryden, Fr. | 8-0 | 0 | 0 | 0 | 0 | 0 | 0 |
| 15 Michael Gow, Fr. | 1-0 | 0 | 0 | 0 | 0 | 0 | 0 |
| 6 Kellington Boddie, So. | 13-12 | 0 | 0 | 0 | 0 | 0 | 0 |
| 1 Lance Parker, Jr. | 16-16 | 0 | 0 | 0 | 0 | 0 | 0 |
| 0 Alex Riggs, Fr. | 5-3 | 0 | 0 | 0 | 0 | 0 | 0 |

| | | | | | | | |
|-------------------|-----------|-----------|-----------|-----------|------------|------------|----------|
| MSU Totals | 19 | 22 | 21 | 65 | 291 | 103 | 8 |
| Opponents | 19 | 18 | 18 | 54 | 248 | 96 | 8 |

| Goalkeeping | MP-MS | Min | Saves | GA | GAA | ShO | W-L-T |
|----------------|-------|------|-------|----|------|-----|-------|
| 1 Lance Parker | 16-16 | 1425 | 49 | 9 | 0.57 | 7 | 7-5-3 |
| 0 Alex Riggs | 5-3 | 375 | 23 | 9 | 2.16 | 0 | 1-3-0 |

| | | | | | | | |
|-------------------|-----------|-------------|-----------|-----------|-------------|----------|--------------|
| MSU Totals | 19 | 1800 | 78 | 18 | 0.90 | 7 | 8-8-3 |
| Opponents | 19 | 1800 | 81 | 22 | 1.10 | 7 | 8-8-3 |

Corner Kicks: MSU 90, Opp. 82

Fouls: Opp. 286, MSU 241

Penalty Kicks: MSU 0/0, Opp. 1/1

Yellow Cards: Opp. 32, MSU 24 (Alford-3 Anderson-1, Cooper-3, Douglass-1, Hopson-1, Joseph-2, May-1, Shoucair-4, Williams-2, Windmueller-1, Welch-4, Ziegahn-1)

Red Cards: Opp. 4, MSU 2 (Welch, Parker)

| Record Breakdown | | Attendance Totals | | | | | |
|----------------------------|-------|--------------------|------------|--------------|------------|--------------|----|
| Home | 4-0-2 | Site | No. | Total | Avg | High | |
| Road | 2-4-0 | Home | 6 | 5082 | 847 | 2102 | |
| Neutral Sites | 2-4-1 | Away | 6 | 3120 | 520 | 1374 | |
| MVC Matches | 3-2-1 | Neutral | 7 | 1871 | 267 | 1120 | |
| Vs. Ranked Opponents | 0-0-0 | Total | 19 | 10073 | 530 | 2102 | |
| Overtime Matches | 2-1-3 | Scoring By Periods | | | | | |
| One-Goal Matches | 3-5-0 | 1st | 2nd | 1ot | 2ot | Total | |
| Shutout Matches | 5-5-2 | MSU | 9 | 11 | 2 | 0 | 22 |
| After Trailing at Halftime | 0-7-0 | Opp. | 10 | 7 | 0 | 1 | 18 |
| After Leading at Halftime | 5-0-0 | | | | | | |
| After Tied at Halftime | 3-1-3 | | | | | | |

| Missouri State Game Highs | | |
|---------------------------|----|-------------------------------------|
| Points | 12 | vs. Central Arkansas |
| Goals | 4 | vs. Central Arkansas |
| Assists | 4 | vs. Central Arkansas vs. Georgetown |
| Shots | 26 | vs. Robert Morris |
| Shots on Goal | 12 | vs. Air Force |
| Saves | 8 | at Saint Louis |
| Corner Kicks | 9 | vs. Robert Morris vs. Air Force |
| Fouls | 19 | vs. Oral Roberts |
| Opponent Highs | | |
| Points | 11 | Eastern Illinois |
| Goals | 3 | Eastern Illinois |
| Assists | 5 | Eastern Illinois |
| Shots | 29 | Fairleigh Dickinson |
| Shots on Goal | 10 | Eastern Illinois |
| Saves | 11 | Robert Morris |
| Corner Kicks | 9 | Creighton/UMKC |
| Fouls | 24 | Air Force |

| Individual Game Highs | |
|-------------------------------------|--|
| Points | |
| 4, Will Ziegahn vs. E. Illinois | |
| 4, Danny May vs. Air Force | |
| Goals | |
| 2, Will Ziegahn vs. E. Illinois | |
| 2, Danny May vs. Air Force | |
| Assists | |
| 2, Kyle Hopson (twice) | |
| Shots | |
| 11, Ryan Anderson vs. Robert Morris | |
| Shots on Goal | |
| 5, Ryan Anderson vs. E. Illinois | |
| Saves | |
| 8, Lance Parker at Saint Louis | |



Missouri State[™]

Missouri State Career Leaders

| Points | Years | G | A | Pts. |
|--------------------|---------|----|----|------|
| 1. Matt Caution | 1993-97 | 46 | 33 | 125 |
| 2. Brad Jordan | 1994-97 | 34 | 29 | 97 |
| 3. Jamal Sutton | 2000-03 | 26 | 18 | 70 |
| 4. Derek Phillips | 1991-94 | 27 | 13 | 67 |
| Mike Williams | 1997-00 | 26 | 15 | 67 |
| 6. Doug Lascody | 2001-04 | 20 | 21 | 61 |
| 7. Ryan Anderson | 2004-06 | 23 | 8 | 54 |
| 8. Chris Brunt | 1998-01 | 20 | 13 | 53 |
| 9. Eric Adams | 1985-88 | 19 | 13 | 51 |
| Mike Lamb | 1995-97 | 18 | 15 | 51 |
| 11. Danny May | 2004-06 | 19 | 11 | 49 |
| 12. Jarod Bertrand | 1998-01 | 14 | 20 | 48 |
| 13. Jim Thwing | 1989-90 | 13 | 17 | 43 |
| 14. Steve Harden | 1981-82 | 19 | 4 | 42 |
| Chris Piathek | 1984-88 | 14 | 14 | 42 |
| 16. Kip Thompson | 1988-91 | 12 | 17 | 41 |
| 17. Cliff Curtis | 1993-96 | 13 | 13 | 39 |
| 18. Matt Meyer | 1987-90 | 13 | 12 | 38 |
| 19. Severin Lwali | 1997-99 | 10 | 17 | 37 |
| 20. Bill Muller | 1988-91 | 10 | 14 | 34 |

| Goals | Years | Total |
|-------------------|---------|-------|
| 1. Matt Caution | 1993-97 | 46 |
| 2. Brad Jordan | 1994-97 | 34 |
| 3. Derek Phillips | 1991-94 | 27 |
| 4. Mike Williams | 1997-00 | 26 |
| Jamal Sutton | 2000-03 | 26 |
| 6. Ryan Anderson | 2004-06 | 23 |
| 7. Chris Brunt | 1998-01 | 20 |
| Doug Lascody | 2001-04 | 20 |
| 9. Eric Adams | 1985-88 | 19 |
| Steve Harden | 1982-83 | 19 |
| Danny May | 2004-06 | 19 |

| Assists | Years | Total |
|-------------------|---------|-------|
| 1. Matt Caution | 1993-97 | 33 |
| 2. Brad Jordan | 1994-97 | 29 |
| 3. Doug Lascody | 2001-04 | 21 |
| 4. Jerod Bertrand | 1998-01 | 20 |
| 5. Jamal Sutton | 2000-03 | 18 |

| Game Winners | Years | Total |
|------------------|---------|-------|
| 1. Matt Caution | 1993-97 | 12 |
| Brad Jordan | 1994-97 | 12 |
| 3. Mike Williams | 1997-00 | 9 |
| Doug Lascody | 2001-04 | 9 |
| 5. Chris Brunt | 1998-01 | 8 |
| Danny May | 2004-06 | 8 |
| 7. Ryan Anderson | 2004-06 | 7 |

| Shots* | Years | Total |
|------------------|---------|-------|
| 1. Jamal Sutton | 2000-03 | 236 |
| 2. Brad Jordan | 1994-97 | 198 |
| 3. Doug Lascody | 2001-04 | 196 |
| 4. Matt Caution | 1993-97 | 184 |
| 5. Ryan Anderson | 2004-06 | 175 |
| 6. Chris Brunt | 1998-01 | 166 |

| Games Started^ | Years | Total |
|-------------------|---------|-------|
| 1. Mark Modersohn | 1997-00 | 81 |
| 2. Jarod Bertrand | 1998-01 | 79 |
| Dan Watson | 1999-02 | 79 |
| 4. Chris Brunt | 2001-03 | 77 |
| 5. John Fulhorst | 1989-92 | 73 |
| Matt Caution | 1993-97 | 73 |

| Saves | Years | Total |
|-------------------|---------|-------|
| 1. Mark Modersohn | 1997-00 | 290 |
| 2. Kevin Beaudry | 1990-92 | 272 |
| 3. Matt Pickens | 2001-03 | 268 |
| 4. Brad Barnes | 1993-96 | 256 |
| 5. George Tullos | 1984-87 | 247 |

| Shutouts | Years | Total |
|------------------------|-------------------|----------|
| 1. Mark Modersohn | 1997-00 | 26 |
| 2. Brad Barnes | 1993-96 | 21 |
| 3. Matt Pickens | 2001-03 | 13 |
| 4. Nathan Platz | 2002-05 | 10 |
| 5. Steve Mayes | 1993-96 | 9 |
| 6. Lance Parker | 2004-pres. | 8 |

| Goals-Against Avg.^ | Years | GAA |
|------------------------|-------------------|-------------|
| 1. Lance Parker | 2004-pres. | 0.73 |
| 2. Mark Modersohn | 1997-00 | 0.88 |
| 3. Nathan Platz | 2002-05 | 0.95 |
| 4. Matt Pickens | 2001-03 | 1.55 |
| 5. Brad Barnes | 1993-96 | 1.66 |

(Minimum 1,600 minutes to qualify)

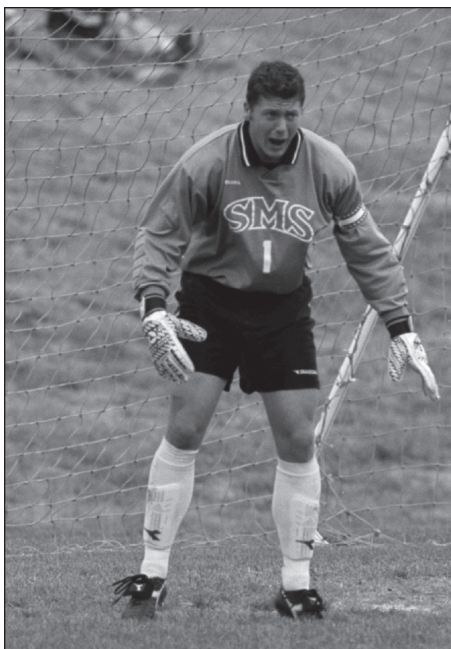
| Goalkeeper Wins* | Years | Total |
|-------------------|---------|-------|
| 1. Mark Modersohn | 1997-00 | 51 |
| 2. Brad Barnes | 1993-96 | 34 |
| 3. Matt Pickens | 2001-03 | 28 |
| 4. Nathan Platz | 2002-05 | 22 |
| 5. Kevin Beaudry | 1990-92 | 17 |

| Minutes in Goal* | Years | Total |
|-------------------|---------|-------|
| 1. Mark Modersohn | 1997-00 | 7,730 |
| 2. Brad Barnes | 1993-96 | 4,878 |
| 3. Kevin Beaudry | 1990-92 | 4,610 |
| 4. Matt Pickens | 2001-03 | 4,456 |
| 5. Nathan Platz | 2002-05 | 3,216 |

| Games Started in Goal# | Years | Total |
|------------------------|---------|-------|
| 1. Mark Modersohn | 1997-00 | 81 |
| 2. Matt Pickens | 2001-03 | 58 |
| 3. Brad Barnes | 1993-96 | 57 |
| 4. Kevin Beaudry | 1990-92 | 51 |
| 5. Nathan Platz | 2002-05 | 36 |

Since 1985, ^ Since 1987, * Since 1988

| Missouri State All-Time | |
|---|--|
| ***** | |
| 26 years, 244-213-19 (.533) | |
| Mid-Con. Record, 3-3 (.500) | |
| MVC Record, 53-47-10 (.527) | |
| 2 MVC Regular Season Titles (1997 & 1999) | |
| 1 MVC Postseason Title (1999) | |
| 2 NCAA Appearances (1997 & 1999) | |



1999 Missouri Valley Conference Defensive Player of the Year Mark Modersohn

| Missouri State Team Records | |
|---|--|
| Match | |
| Most Goals | 10 vs. Baptist Bible College (1981) |
| Most Goals Allowed | 8, Memphis State (1987) |
| Most Combined Goals | 10 vs. Baptist Bible Coll. (1981) |
| Most Assists | 10 vs. Southwest Baptist (1994 & 1995) |
| Consecutive Matches Without a Loss | 20 (1999) |
| Season | |
| Most Goals | 59 (1995) |
| Fewest Goals | 15 (1992) |
| Most Goals Allowed | 51 (1987) |
| Fewest Goals Allowed | 14 (1998) |
| Most Assists | 68 (1999) |
| Fewest Assists | 11 (1983) |
| Most Saves | 176 (1985) |
| Fewest Saves | 54 (1998) |
| Most Wins | 17 (1999) |
| Fewest Wins | 3 (1983) |
| Most Home Wins | 8 (1996 - undefeated) |
| Most Road Wins | 8 (1999) |
| Most Consecutive Wins | 12 (1999) |
| Most Shutouts | 11 (1998) |
| Consecutive Shutouts | 5 (2005) |
| Most Times Shutout | 8 (1986 and 1992) |
| Fewest Times Shutout | 2 (2004) |



Missouri State career points, goals, assists, and game winners record holder Matt Caution

Missouri State Single-Season Leaders

| Points | Year | G | A | Pts. |
|------------------|------|----|----|------|
| 1. Matt Caution | 1995 | 15 | 9 | 39 |
| 2. Matt Caution | 1993 | 16 | 6 | 38 |
| 3. Ryan Anderson | 2005 | 15 | 3 | 33 |
| 4. Steve Harden | 1982 | 15 | 2 | 32 |
| 5. Jim Thwing | 1989 | 8 | 14 | 30 |
| Derek Phillips | 1993 | 12 | 6 | 30 |
| Brad Jordan | 1995 | 11 | 8 | 30 |
| 8. Brad Jordan | 1997 | 11 | 7 | 29 |
| 9. Martin Bixby | 1983 | 11 | 5 | 27 |
| Brad Jordan | 1996 | 9 | 9 | 27 |
| 11. Doug Lascody | 2003 | 11 | 3 | 25 |
| Matt Caution | 1997 | 7 | 11 | 25 |
| 13. Danny May | 2004 | 8 | 8 | 24 |

| Goals | Year | Total |
|-------------------|-----------|-------|
| 1. Matt Caution | 1993 | 16 |
| 2. Matt Caution | 1995 | 15 |
| Ryan Anderson | 2005 | 15 |
| 4. Steve Harden | 1982 | 15 |
| 5. Derek Phillips | 1993 | 12 |
| 6. Doug Lascody | 2003 | 11 |
| Jamal Sutton | 2001 | 11 |
| Martin Bixby | 1983 | 11 |
| Brad Jordan | 1995 & 97 | 11 |
| 10. Chris Deal | 2004 | 10 |

| Assists | Year | Total |
|---------------------------|------|-------|
| 1. Jim Thwing | 1989 | 14 |
| 2. Doug Lascody | 2004 | 13 |
| 3. Matt Caution | 1997 | 11 |
| 4. Five players tied with | | 9 |

| Game Winners | Year | Total |
|------------------|------|-------|
| 1. Ryan Anderson | 2005 | 6 |
| 2. Doug Lascody | 2003 | 5 |
| Brad Jordan | 1995 | 5 |
| 4. Jamal Sutton | 2001 | 4 |
| Matt Caution | 1995 | 4 |
| Mike Cortinas | 1998 | 4 |
| Danny May | 2004 | 4 |

| Shots* | Year | Total |
|------------------|------|-------|
| 1. Jamal Sutton | 2003 | 100 |
| 2. Ryan Anderson | 2006 | 89 |
| 2. Doug Lascody | 2003 | 66 |
| 3. Doug Lascody | 2004 | 62 |
| 4. Brad Jordan | 1996 | 60 |
| Jamal Sutton | 2002 | 60 |

*Since 1988

| Saves | Year | Total |
|-------------------|------|-------|
| 1. George Tullos | 1985 | 148 |
| 2. Kevin Beaudry | 1992 | 118 |
| 3. Matt Pickens | 2001 | 103 |
| 4. George Tullos | 1986 | 96 |
| 5. Mark Modersohn | 2000 | 93 |

| Shutouts | Year | Total |
|---------------------|-------------|----------|
| 1. Mark Modersohn | 1998 | 11 |
| 2. Mark Modersohn | 1999 | 8 |
| 3. Brad Barnes | 1994 | 7 |
| Lance Parker | 2006 | 7 |
| 5. Brad Barnes | 1995 & 96 | 6 |

| Goals-Against Avg. | Year | GAA |
|--------------------|------|------|
| 1. Lance Parker | 2006 | 0.57 |
| 2. Mark Modersohn | 1998 | 0.65 |
| 3. Mark Modersohn | 1999 | 0.78 |
| 4. Nathan Platz | 2005 | 0.87 |
| 5. Mark Modersohn | 2000 | 0.96 |

Player must play at least 50% of team's minutes

| Goalkeeper Wins* | Year | Total |
|-------------------|------|-------|
| 1. Mark Modersohn | 1999 | 17 |
| 2. Brad Barnes | 1995 | 14 |
| 3. Mark Modersohn | 1998 | 13 |
| 4. Brad Barnes | 1995 | 11 |
| 5. Matt Pickens | 2001 | 10 |
| Nathan Platz | 2004 | 10 |

*Since 1988

| Fewest Goals Allowed | Year* | Total |
|----------------------|-------|-------|
| 1. Lance Parker | 2006 | 9 |
| 2. Brad Barnes | 1994 | 14 |
| Mark Modersohn | 1998 | 14 |
| 4. Nathan Platz | 2004 | 18 |
| 5. Mark Modersohn | 1999 | 19 |
| Mark Modersohn | 2000 | 19 |

*Since 1988

| Minutes in Goal* | Year | Total |
|-------------------|------|-------|
| 1. Mark Modersohn | 1999 | 2,045 |
| 2. Mark Modersohn | 1997 | 1,928 |
| 3. Mark Modersohn | 1998 | 1,925 |
| 4. Matt Pickens | 2001 | 1,913 |
| 5. Matt Pickens | 2002 | 1,822 |

*Since 1988

| Games Started in Goal* | Year | Total |
|------------------------|------|-------|
| 1. Mark Modersohn | 1998 | 21 |
| Mark Modersohn | 1999 | 21 |
| 3. Mark Modersohn | 1997 | 20 |
| Matt Pickens | 2001 | 20 |
| 5. Kevin Beaudry | 1992 | 19 |
| Brad Barnes | 1995 | 19 |
| Matt Pickens | 2002 | 19 |
| Matt Pickens | 2003 | 19 |

*Since 1988

MSU Single-Match Records

Goals

| |
|---|
| 4. Tim Abeln vs. Baptist Bible College, 1981 |
| 4. Ken Robinson vs. Baptist Bible Coll., 1981 |
| 4. Matt Caution vs. Mo. Southern, 1993 |
| 4. Chris Deal vs. Evansville, 2004 |

Assists

| |
|---|
| 3. Jim Thwing vs. Mo.-Rolla/C. Mich. 1989 |
| 3. Courtney Weston vs. C. Mich., 1989 |
| 3. Derek Phillips vs. SBU, 1994 |
| 3. Brad Jordan vs. SBU, 1994 |
| 3. Jerry Mercurio vs. SBU, 1995 |
| 3. Cliff Curtis vs. Bradley, 1995 |
| 3. Doug Lascody vs. Evansville, 2004 |
| 3. Brett Williams vs. Evansville, 2005 |

Saves

| |
|---------------------------------------|
| 16. Kevin Beaudry vs. Rockhurst, 1990 |
|---------------------------------------|

Hat Tricks

Ryan Anderson recorded the 20th hat trick in Missouri State men's soccer history when he scored three goals in the Bears' 3-1 victory over Florida International on Sept. 3, 2005. Chris Deal is the last player to score four goals in a game, doing so against Evansville on Oct. 10, 2004.

Doug Lascody recorded a hat trick in a 4-1 win against Vanderbilt in 2003. Jed Hohlbein also gathered a hat trick as he scored three times in a 3-2 victory over Oakland Sept. 1 of 2002. Severin Lwali and Mike Williams both scored three goals in 1999.

Matt Caution is the only Missouri State player to record more than two hat tricks. Caution posted four in his career, with the first three coming as a freshman.

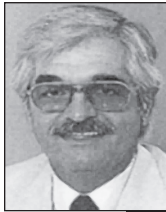
Tim Abeln and Ken Robinson each scored four goals in a 10-0 win against Baptist Bible College in 1981, and Caution repeated the feat against Missouri Southern in 1993 to become the last four-goal scorer before Deal repeated the feat in 2004.

| G | Player | Opponent | Year |
|---|-----------------|-----------------------|------|
| 4 | Tim Abeln | Baptist Bible College | 1981 |
| 4 | Ken Robinson | Baptist Bible College | 1981 |
| 4 | Matt Caution | Missouri Southern | 1993 |
| 4 | Chris Deal | Evansville | 2004 |
| 3 | Kent Burkholder | Baptist Bible College | 1981 |
| 3 | Dennis Roques | Missouri-Rolla | 1986 |
| 3 | Andy Molski | Missouri-Kansas City | 1987 |
| 3 | Tait Einerson | Western Michigan | 1991 |
| 3 | Matt Caution | Missouri-Rolla | 1993 |
| 3 | Derek Phillips | Arkansas-Little Rock | 1993 |
| 3 | Derek Phillips | Centenary | 1993 |
| 3 | Matt Caution | Oral Roberts | 1993 |
| 3 | Matt Caution | Southwest Baptist | 1995 |
| 3 | Mike Lamb | Southwest Baptist | 1995 |
| 3 | Jerry Mercurio | Arkansas-Little Rock | 1995 |
| 3 | Severin Lwali | Western Illinois | 1999 |
| 3 | Mike Williams | Northern Illinois | 1999 |
| 3 | Jed Hohlbein | Oakland | 2002 |
| 3 | Doug Lascody | Vanderbilt | 2003 |
| 3 | Ryan Anderson | Florida International | 2005 |

Missouri State Yearly Individual Leaders

| Year | Points | Goals | Assists | Saves | | | | |
|------|-------------------------|-------|------------------------|-------|-------------------|----|----------------|-----|
| 1981 | Tim Abeln | 13 | Tim Abeln | 5 | Sergio Oliveira | 4 | Patrick McHugh | 47 |
| 1982 | Steve Harden | 32 | Steve Harden | 15 | Kruse/Metzler | 4 | Not available | --- |
| 1983 | Martin Bixby | 27 | Martin Bixby | 11 | Martin Bixby | 5 | Not available | --- |
| 1984 | Ralston/Piatckek/Rogers | 7 | Ralston/Hittler/Rogers | 3 | Piatckek/Cook | 3 | Not available | --- |
| 1985 | Eric Adams | 20 | Eric Adams | 8 | David Ralston | 7 | George Tullos | 148 |
| 1986 | Andy Popp | 11 | Popp/Roques | 4 | Eric Adams | 4 | George Tullos | 96 |
| 1987 | Chris Piatckek | 18 | Chris Piatckek | 6 | Chris Piatckek | 6 | Bernie Powers | 44 |
| 1988 | Eric Adams | 15 | Eric Adams | 6 | Kip Thompson | 5 | Matt Pappert | 61 |
| 1989 | Jim Thwing | 30 | Jim Thwing | 8 | Jim Thwing | 14 | Kevin MacBryde | 43 |
| 1990 | Jim Thwing | 13 | Jim Thwing | 5 | Scott Swain | 4 | Kevin Beaudry | 90 |
| 1991 | Taid Einerson | 13 | Tait Einerson | 6 | Bill Muller | 6 | Kevin Beaudry | 64 |
| 1992 | Derek Phillips | 9 | Derek Phillips | 4 | Four tied | 2 | Kevin Beaudry | 118 |
| 1993 | Matt Caution | 38 | Matt Caution | 16 | Paul Buzzetta | 7 | Steve Mayes | 69 |
| 1994 | Dave Schall | 21 | Dave Schall | 9 | Derek Phillips | 6 | Brad Barnes | 56 |
| 1995 | Matt Caution | 39 | Matt Caution | 15 | Matt Caution | 9 | Brad Barnes | 83 |
| 1996 | Brad Jordan | 27 | Brad Jordan | 9 | Brad Jordan | 9 | Brad Barnes | 53 |
| 1997 | Brad Jordan | 29 | Brad Jordan | 11 | Matt Caution | 11 | Mark Modersohn | 79 |
| 1998 | Mike Williams | 13 | Williams/Cortinas | 5 | Wylie/Rickard | 4 | Mark Modersohn | 54 |
| 1999 | Mike Williams | 23 | Mike Williams | 9 | Brtrnd/Rckrd/Hwrd | 9 | Mark Modersohn | 66 |
| 2000 | Mike Williams | 19 | Mike Williams | 7 | Mike Williams | 5 | Mark Modersohn | 93 |
| 2001 | Jamal Sutton | 24 | Jamal Sutton | 11 | Adam Wessley | 6 | Matt Pickens | 103 |
| 2002 | Jed Hohlbein | 20 | Jed Hohlbein | 7 | Jamal Sutton | 7 | Matt Pickens | 88 |
| 2003 | Doug Lascody | 25 | Doug Lascody | 11 | Jamal Sutton | 5 | Matt Pickens | 77 |
| 2004 | Danny May | 24 | Chris Deal | 10 | Doug Lascody | 13 | Nathan Platz | 51 |
| 2005 | Ryan Anderson | 33 | Ryan Anderson | 15 | Crawford/Douglass | 5 | Nathan Platz | 80 |
| 2006 | Ryan Anderson | 10 | Ryan Anderson | 4 | Kyle Hopson | 7 | Lance Parker | 49 |

Missouri State Year-by-Year Results



Frank Dinka

MSU Coach
1981-86

6 seasons,
33-60-6 (.364)

1981 4-6-1 (.409)

| Opponent | W/L/T | Result |
|------------------------------------|-------|--------|
| at Missouri-Rolla | L | 1-3 |
| at Benedictine | T | 2-2 |
| at Missouri-St. Louis | L | 0-3 |
| at Southeast Mo. St. Baptist Bible | W | 1-0 |
| at Tulsa | W | 7-0 |
| Truman State | L | 1-4 |
| at Park College | L | 0-1 |
| Baptist Bible | L | 0-1 |
| Southeast Mo. St. | W | 10-0 |
| Tulsa | L | 0-1 |
| Tulsa | W | 3-1 |

1982 5-10-2 (.353)

| Opponent | W/L/T | Result |
|-----------------------|-------|--------|
| Southeast Mo. St. | L | 3-4 |
| William Jewell | W | 3-0 |
| Tarkio | W | 2-1 |
| Rockhurst | L | 1-2 |
| Northeastern Okla. | W | 2-1 |
| at Illinois State | L | 1-3 |
| at Ill-Springfield | L | 0-3 |
| at Missouri-St. Louis | L | 1-6 |
| at Memphis | L | 3-4 |
| Missouri-Rolla | T | 1-1 |
| at Benedictine | W | 2-0 |
| John Brown | T | 0-0 |
| at Northeastern Okla. | W | 2-1 |
| at Tulsa | L | 2-3 |
| at Missouri Southern | L | 2-3 |
| Maryville | L | 1-2 |
| at Southeast Mo. St. | L | 1-2 |

1983 3-12-1 (.219)

| Opponent | W/L/T | Result |
|-----------------------|-------|--------|
| Wisconsin-Green Bay | L | 2-3 |
| at Northeastern Okla. | T | 3-3 |
| at Rockhurst | L | 0-4 |
| at Tulsa | L | 1-4 |
| at Cleveland State | L | 1-7 |
| at Western Illinois | W | 3-2 |
| at Missouri-St. Louis | L | 0-3 |
| at Missouri Southern | L | 3-4 |
| Northeastern Okla. | W | 3-2 |
| at John Brown | L | 0-3 |
| at Creighton | L | 0-2 |
| at Tulsa | L | 0-2 |
| at Missouri Southern | L | 0-1 |
| at Maryville | W | 3-1 |
| at Missouri-Rolla | L | 1-4 |
| Tulsa | L | 1-2 |

1984 6-11-0 (.409)

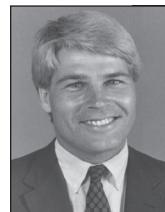
| Opponent | W/L/T | Result |
|------------------------|-------|--------|
| Northeastern Okla. | W | 2-0 |
| at Missouri Southern | L | 0-6 |
| John Brown | W | 5-0 |
| Western Illinois | L | 0-5 |
| Rockhurst | L | 0-4 |
| Missouri-Rolla | L | 1-3 |
| at West. Kentucky (ot) | W | 1-0 |
| at Kentucky Wesleyan | L | 1-3 |
| Bartlesville Wesleyan | W | 3-0 |
| at Missouri-St. Louis | L | 0-6 |
| at Benedictine | L | 3-4 |
| at Northeastern Okla. | L | 1-2 |
| at Illinois State | L | 0-4 |
| at Bart. Wesleyan (ot) | W | 3-2 |
| Tulsa | L | 1-3 |
| Maryville (forfeit) | W | 1-0 |
| at Tulsa | L | 0-2 |

1985 7-10-2 (.421)

| Opponent | W/L/T | Result |
|------------------------|-------|--------|
| Truman State | W | 3-2 |
| at Mo. Southern (2ot) | T | 1-1 |
| at Avila (ot) | L | 2-3 |
| at John Brown | L | 0-1 |
| at Western Kentucky | L | 0-1 |
| at Cincinnati | L | 2-3 |
| at Rockhurst | L | 0-2 |
| at Missouri-St. Louis | L | 0-1 |
| at Midwestern State | L | 0-3 |
| Illinois State | L | 0-2 |
| at Friends | W | 8-0 |
| at Kansas Newman(ot) | T | 2-2 |
| at Missouri Baptist | W | 4-0 |
| at Ind. St.-Evansville | L | 2-3 |
| at Missouri-Rolla | W | 4-1 |
| at Bart. Wesleyan | W | 2-0 |
| at Greenville (ot) | W | 3-2 |
| at Wisconsin (forfeit) | W | 1-0 |
| at Creighton | L | 1-3 |

1986 8-11-0 (.421)

| Opponent | W/L/T | Result |
|----------------------|-------|--------|
| Maryville | W | 2-1 |
| Washington | L | 0-1 |
| Avila | L | 0-1 |
| at Missouri Southern | W | 2-1 |
| at Illinois State | L | 0-3 |
| at Southeast Mo. St. | W | 2-0 |
| at SIU-Edwardsville | L | 0-4 |
| at John Brown | W | 4-0 |
| at Truman State | L | 2-3 |
| Quincy | L | 0-5 |
| at TCU | W | 1-0 |
| at Midwestern State | L | 0-2 |
| Arkansas-Little Rock | L | 0-1 |
| Tulsa | L | 0-1 |
| Arkansas-Little Rock | L | 1-2 |
| North Central | W | 2-1 |
| Rockhurst | L | 0-3 |
| Kansas-Newman | W | 4-3 |
| Missouri-Rolla | W | 3-2 |



Jan Stahle

MSU Coach
1987-89

3 seasons,
32-30-2 (.516)

1987 9-10-1 (.475)

| Opponent | W/L/T | Result |
|-----------------------|-------|--------|
| at Western Illinois | L | 0-5 |
| at Roosevelt | W | 3-0 |
| UMKC | W | 7-1 |
| Southeast Mo. St. | W | 2-1 |
| Minnesota (ot) | W | 2-1 |
| at Avila | L | 0-3 |
| at John Brown | T | 2-2 |
| Tulsa (ot) | W | 3-2 |
| Southern Nazarene | L | 1-5 |
| Missouri Southern | W | 1-0 |
| at Oklahoma City | L | 0-3 |
| at So. Nazarene (ot) | L | 2-4 |
| at Missouri-Rolla | L | 1-2 |
| at Benedictine | W | 2-1 |
| at Missouri-St. Louis | L | 1-4 |
| at Ark.-Little Rock | W | 3-2 |
| at Memphis | L | 1-8 |
| McKendree | W | 2-1 |
| at Rockhurst | L | 1-4 |
| at Tulsa | L | 1-2 |

1988 9-12-1 (.432)

| Opponent | W/L/T | Result |
|----------------------|-------|--------|
| at Fontbonne | W | 3-0 |
| at Southeast Mo. St. | W | 2-0 |
| John Brown | T | 1-1 |
| MSU Classic | | |
| UMKC | W | 1-0 |
| Oral Roberts | W | 4-3 |

| | | |
|-----------------------|---|-----|
| at Bradley | W | 2-0 |
| at Illinois State | L | 0-3 |
| at Saint Louis | L | 0-4 |
| Avila | L | 1-2 |
| at Wisconsin-Parkside | L | 0-2 |
| at Ill.-Springfield | L | 0-7 |
| at Southern Methodist | L | 0-4 |

Oral Roberts Tournament

| | | |
|-----------------------|---|-----|
| Tulsa | L | 1-2 |
| at Oral Roberts | L | 3-5 |
| at Northeastern Okla. | W | 4-0 |
| at Hardin-Simmons | L | 1-3 |
| at TCU | L | 1-3 |
| Rockhurst | L | 1-2 |
| at Missouri Southern | W | 4-3 |
| at Truman State | L | 0-1 |
| Tulsa | W | 2-0 |
| Western Illinois | W | 2-0 |

1989 14-8-0 (.636)

*Mid-Con: 3-3 (4th)

| Opponent | W/L/T | Result |
|----------------------|-------|--------|
| at Western Illinois* | W | 1-0 |
| at Southeast Mo. St. | W | 5-1 |
| Missouri Valley | W | 4-0 |
| SIU-Edwardsville@ | L | 1-2 |

Wis.-Green Bay Classic

| | | |
|--------------------|---|-----|
| at Wis.-Green Bay* | L | 0-4 |
| Central Michigan | W | 6-1 |
| Missouri Southern | W | 2-1 |
| Truman State | L | 0-2 |
| Bradley | W | 3-1 |

UMSL Budweiser Classic+

| | | |
|----------------------------|---|-----|
| Benedictine | W | 6-2 |
| at Missouri-St. Louis (ot) | L | 2-4 |
| UMKC | W | 2-0 |
| at Valparaiso* | W | 3-1 |
| at Cleveland State* | L | 1-4 |
| at Avila | W | 2-0 |
| Illinois-Chicago* | W | 5-1 |
| Missouri-Rolla (ot) | W | 4-1 |
| at Rockhurst | L | 0-4 |
| Oral Roberts | W | 3-2 |
| at TCU | L | 1-2 |
| at Tulsa (ot) | L | 1-2 |
| at Eastern Illinois* | L | 0-2 |

@Game later forfeited to MSU.



Tom Howe

MSU Coach
1990-91

2 seasons,
17-18-1 (.486)

1990 8-8-1 (.500)

| Opponent | W/L/T | Result |
|-----------------------|-------|--------|
| at Bradley | W | 2-0 |
| at Missouri-St. Louis | W | 3-2 |
| UMKC | W | 6-0 |
| Rockhurst | W | 1-0 |

Nike-Great Lakes Classic

| | | |
|----------|---|-----|
| Brooklyn | L | 1-2 |
| Quincy | L | 0-1 |

Great Carolina Shootout

| | | |
|------------------------|---|-----|
| at Coastal Carolina | L | 0-4 |
| North Carolina (ot) | L | 1-2 |
| Arkansas-Little Rock | W | 2-1 |
| at Drake (ot) | T | 2-2 |
| Tulsa | L | 1-2 |
| at Missouri-Rolla (ot) | W | 3-2 |
| at Northern Illinois | L | 0-7 |
| at Southern Methodist | L | 0-3 |
| at TCU(ot) | L | 3-4 |
| Eastern Illinois | W | 3-1 |
| Creighton (ot) | W | 5-4 |

1991 9-10 (.473)

*MVC: 1-2 (4th)

| Opponent | Result |
|-----------------------|--------|
| at Southern Methodist | L 0-3 |

| | | |
|---------------------|---|-----|
| at SIU-Edwardsville | L | 1-3 |
| at Ark.-Little Rock | W | 1-0 |

Brigham Young Invitational

| | | |
|----------------------|---|-----|
| Cal State-Sacramento | W | 4-2 |
| Loyola Marymount(ot) | W | 3-1 |
| at Rockhurst | L | 2-3 |

Eastern Illinois Classic

| | | |
|---------------------|---|-----|
| Northern Illinois | L | 1-2 |
| at Eastern Illinois | L | 1-4 |
| Missouri-Rolla | W | 3-0 |

Loyola Tournament

| | | |
|-----------------------|---|-----|
| Western Michigan | W | 4-2 |
| Loyola-Chicago | W | 2-0 |
| Illinois State* | L | 0-2 |
| Bradley* | W | 2-0 |
| at Quincy | L | 0-4 |
| at Tulsa* | L | 0-3 |
| Memphis | W | 4-2 |
| at Missouri-St. Louis | L | 0-4 |

MVC Tournament

| | | |
|-------|---|-----|
| Drake | W | 2-1 |
| Tulsa | L | 1-2 |



Jon Leamy

MSU Coach
1992-Present

14 seasons,
154-97-19 (.606)

1992 4-15-0 (.211)

*MVC: 0-5 (6th)

| Opponent | W/L/T | Result |
|-------------------|-------|--------|
| SIU-Edwardsville | L | 0-1 |
| Missouri Southern | W | 1-0 |

Nike-Great Lakes Classic

| | | |
|------------------------|---|-----|
| Northwestern | L | 1-3 |
| Louisville (ot) | L | 0-2 |
| Rockhurst | L | 0-1 |
| at Western Kentucky | W | 2-1 |
| at Southern Indiana | L | 1-2 |
| Tulsa* | L | 2-4 |
| at Illinois State* | L | 1-4 |
| at Bradley* | L | 1-4 |
| Arkansas-Little Rock | L | 1-3 |
| Missouri-Kansas City | W | 3-2 |
| Missouri-St. Louis | W | 0-3 |
| at Memphis | L | 0-3 |
| Quincy | L | 0-3 |
| at Missouri-Rolla (ot) | W | 2-1 |
| #4 Creighton* | L | 0-7 |
| Drake* | L | 0-1 |
| at Oral Roberts | L | 1-3 |

1993 9-9-0 (.500)

*MVC: 1-4 (6th)

| Opponent | W/L/T | Result |
|---------------------|-------|--------|
| at Quincy | L | 0-1 |
| at Western Illinois | W | 1-0 |
| Missouri-Rolla | W | 8-0 |
| at Ark.-Little Rock | W | 3-2 |
| Southern Indiana | L | 0-1 |
| Missouri Southern | W | 4-0 |
| Gonzaga | W | 3-0 |
| at Tulsa* | L | 0-7 |
| Texas-Pan American | L | 2-3 |
| at SIU-Edwardsville | L | 1-3 |
| at Drake* | L | 1-6 |
| at #2 Creighton* | L | 0-4 |
| Bradley* | W | 3-2 |
| Illinois State* | L | 0-2 |
| at Centenary (ot) | W | 4-3 |
| at Texas Christian | W | 3-1 |
| Oral Roberts | W | 3-1 |
| UMKC | L | 1-2 |

1994 12-5-1 (.694)

*MVC: 1-4-1 (6th)

| Opponent | W/L/T | Result |
|-------------------------------|-------|--------|
| MSU Bears Classic | | |
| Western Illinois (ot) | W | 2-1 |
| Quincy | L | 0-4 |
| Quincy Soccer Bowl III | | |
| Cincinnati | W | 4-1 |

| | | |
|--------------------|-----|-----|
| Valparaiso | W | 2-1 |
| Missouri Southern | W | 4-0 |
| UMKC | W | 2-0 |
| at Missouri-Rolla | W | 3-0 |
| Texas Christian | W | 3-2 |
| at Evansville* | T | 1-1 |
| at Oral Roberts | W | 2-1 |
| at Bradley* | W | 1-0 |
| at Illinois State* | L | 0-4 |
| Drake* | L | 1-3 |
| Tulsa* L | 0-4 | |
| Ark.-Little Rock | W | 4-0 |
| Centenary | W | 3-0 |
| Southwest Baptist | W | 8-0 |
| Creighton* | L | 0-1 |

1995 14-5-0 (.737)

***MVC: 2-3 (4th)**

| Opponent | W/L/T | Result |
|-------------------------|-------|--------|
| MCC/MVC Classic | | |
| Quincy | W | 4-2 |
| at Western Illinois(ot) | W | 3-2 |
| Southwest Baptist | W | 9-0 |
| Missouri Southern | W | 8-1 |

Eastern Illinois Classic

| | | |
|--------------------------|---|-----|
| Valparaiso | W | 2-0 |
| at Eastern Illinois | W | 4-0 |
| at Northeastern Illinois | W | 2-1 |
| UMKC | L | 0-2 |
| at Tulsa* | L | 0-2 |
| at Missouri-Rolla | W | 4-1 |
| Evansville* (ot) | L | 2-3 |
| at Ark.-Little Rock | W | 8-0 |
| Oral Roberts | W | 2-1 |
| Bradley* | W | 3-0 |
| at #8 Creighton* | L | 0-3 |
| at Drake* (ot) | W | 2-1 |
| at Centenary | W | 1-0 |
| at Texas Christian | W | 3-1 |

MVC Tournament

| | | |
|-----------|---|-----|
| Creighton | L | 2-5 |
|-----------|---|-----|

1996 12-6-0 (.667)

***MVC: 3-2 (3rd)**

| Opponent | W/L/T | Result |
|--------------------------|-------|--------|
| at #3 Southern Methodist | L | 2-3 |

Tulsa Hurricane Classic

| | | |
|------------------|---|-----|
| Memphis | L | 0-2 |
| Western Illinois | W | 2-1 |
| Texas Christian | W | 6-1 |

MSU Bears Classic

| | | |
|-----------------------|---|-----|
| Centenary | W | 3-2 |
| Western Kentucky | W | 4-2 |
| at UMKC | W | 3-0 |
| Tulsa | W | 2-0 |
| at Vanderbilt | L | 1-3 |
| Texas-Pan American | W | 5-0 |
| at Oral Roberts | W | 5-0 |
| Northeastern Illinois | W | 5-0 |
| at Drake* (ot) | W | 3-1 |
| at #18 Creighton* | L | 2-6 |
| Eastern Illinois* | W | 1-0 |
| Bradley* | W | 1-0 |
| at #24 Evansville* | L | 2-4 |

MVC Tournament

| | | |
|---------------------|---|-----|
| #24 Evansville (ot) | L | 0-1 |
|---------------------|---|-----|

1997 13-5-3 (.690)

***MVC: 6-0-1 (1st)**

| Opponent | W/L/T | Result |
|--------------------------|-------|--------|
| MSU Bears Classic | | |
| Western Illinois | L | 0-1 |
| Memphis (ot) | T | 1-1 |
| Oral Roberts | W | 7-0 |

SLU Classic

| | | |
|-----------------------|---|-----|
| #14 Saint Louis (2ot) | T | 1-1 |
| UAB(ot) | W | 2-1 |
| at #20 Tulsa | W | 3-1 |

Southern Methodist Classic

| | | |
|----------------------------|---|-----|
| #5 Southern Methodist (ot) | L | 1-2 |
| TCU | W | 3-2 |

New Mexico Classic

| | | |
|----------------------|---|-----|
| New Mexico | L | 0-1 |
| Air Force | W | 2-0 |
| UMKC (ot) | W | 2-1 |
| at Vanderbilt* (2ot) | T | 2-2 |
| at Western Kentucky* | W | 5-1 |
| at Eastern Illinois* | W | 3-1 |
| at Bradley* | W | 3-1 |

| | | |
|----------------------|---|-----|
| Drake* | W | 4-2 |
| #11 Creighton* (2ot) | W | 2-1 |
| Evansville* | W | 3-1 |

MVC Tournament

| | | |
|---------------|---|-----|
| Vanderbilt | W | 4-1 |
| #14 Creighton | L | 1-4 |

NCAA Tournament

| | | |
|-----------------|---|-----|
| #14 Saint Louis | L | 0-2 |
|-----------------|---|-----|

1998 13-7-1 (.643)

***MVC: 3-3-1 (5th)**

Opponent W/L/T Result

Western Illinois Tournament

| | | |
|---------|---|-----|
| Memphis | W | 1-0 |
| DePaul | W | 1-0 |

| | | |
|----------------------|---|-----|
| #17 at Saint Louis | L | 1-2 |
| Texas Christian (ot) | L | 0-1 |

Vanderbilt Tournament

| | | |
|---------------------|---|-----|
| Loyola (Ill.) | W | 1-0 |
| Wisconsin-Green Bay | W | 1-0 |

| | | |
|---------------------------|---|-----|
| at #12 Southern Methodist | W | 3-2 |
| Tulsa (ot) | W | 2-1 |
| at Evansville* | W | 1-0 |
| at UMKC | W | 2-0 |

South Carolina Tournament

| | | |
|-----------------------|---|-----|
| #21 at South Carolina | L | 0-1 |
| College of Charleston | W | 2-0 |

| | | |
|-------------------|---|-----|
| at Drake (2ot)* | T | 0-0 |
| #6 at Creighton* | L | 0-1 |
| Bradley* | L | 0-1 |
| Eastern Illinois* | W | 1-0 |
| Western Kentucky* | W | 2-0 |
| Vanderbilt (ot)* | L | 2-3 |

MVC Tournament

| | | |
|---------------|---|-----|
| Vanderbilt | W | 2-0 |
| #22 Bradley | W | 1-0 |
| #13 Creighton | L | 0-1 |

1999 17-1-3 (.881)

***MVC: 5-0-2 (1st)**

Opponent W/L/T Result

Memphis Tournament

| | | |
|------------------|---|-----|
| Western Illinois | W | 7-0 |
| Memphis | W | 3-0 |

| | | |
|-------------------------|---|-----|
| #2 at Saint Louis (2ot) | T | 1-1 |
| UMKC | W | 3-1 |

New Mexico Tournament

| | | |
|-------------------|---|-----|
| Cal Poly-SLO | W | 2-1 |
| Northern Illinois | W | 3-0 |

Creighton Diadora Classic

| | | |
|------------------|---|-----|
| #23 Gonzaga | W | 3-2 |
| Florida Atlantic | W | 3-2 |

MSU Diadora Classic

| | | |
|------------|---|-----|
| New Mexico | W | 1-0 |
| Centenary | W | 4-0 |

| | | |
|----------------------|---|-----|
| at Tulsa (ot) | W | 1-0 |
| at Eastern Illinois* | W | 2-1 |
| at Bradley* | W | 2-1 |
| at Western Kentucky* | W | 1-0 |
| at Vanderbilt* (ot) | W | 2-1 |
| Drake* (2ot) | T | 2-2 |
| #10 Creighton (2ot)* | T | 2-2 |
| at Evansville* (2ot) | W | 3-2 |

MVC Tournament

| | | |
|------------------|---|-----|
| Evansville (2ot) | W | 1-0 |
| at Bradley (ot) | W | 2-1 |

NCAA Tournament

| | | |
|------------|---|-----|
| at #16 UAB | L | 1-2 |
|------------|---|-----|

2000 9-7-3 (.553)

***MVC: 4-5-2 (8th)**

Opponent W/L/T Result

Creighton Diadora Classic

| | | |
|----------------|---|-----|
| Bowling Green | W | 2-1 |
| #12 Washington | W | 3-0 |

MSU Diadora Classic

| | | |
|------------------|---|-----|
| New Mexico | W | 1-0 |
| Western Illinois | W | 2-1 |

Yale Tournament

| | | |
|----------------|---|-----|
| #20 Brown (ot) | L | 1-2 |
| Yale | W | 2-1 |

| | | |
|---------------------------|---|-----|
| at Saint Louis (2ot) | T | 1-1 |
| #8 Creighton* | W | 2-1 |
| Drake* | W | 1-0 |
| at #6 Southern Methodist* | L | 1-2 |
| at Texas Christian* | L | 0-1 |
| Bradley* | L | 1-2 |

| | | |
|---------------------|---|-----|
| Eastern Illinois* | W | 2-0 |
| Evansville* (2ot) | T | 0-0 |
| Western Kentucky* | L | 0-2 |
| at Vanderbilt* (ot) | L | 1-2 |
| at Belmont* | W | 5-1 |
| Tulsa* (2ot) | T | 1-1 |

MVC Tournament

| | | |
|--------------------------|---|-----|
| at #6 Southern Methodist | L | 0-2 |
|--------------------------|---|-----|

2001 10-9-1 (.526)

***MVC: 7-2 (2nd)**

Opponent W/L/T Result

Tulsa Tournament

| | | |
|----------------------|---|-----|
| UNLV | L | 1-2 |
| Cal State-Northridge | L | 2-3 |

MSU/Diadora Tournament

| | | |
|-----------------------|---|-----|
| Georgia Southern (ot) | W | 2-1 |
| Western Illinois | L | 1-2 |

Creighton Tournament

| | | |
|---------------------|---|-----|
| Wisconsin-Milwaukee | W | 2-1 |
| Denver (2ot) | T | 0-0 |

Ohio State Tournament

| | | |
|----------------|---|-----|
| #16 Penn State | L | 0-1 |
| #13 Ohio State | L | 0-1 |

| | | |
|------------------------|---|-----|
| at #5 Saint Louis | L | 1-2 |
| at Evansville* | W | 3-1 |
| Vanderbilt* (ot) | W | 2-1 |
| Western Kentucky* | W | 2-0 |
| at #28 Bradley* (2ot) | L | 1-2 |
| at Eastern Illinois* | W | 2-1 |
| at Creighton* (2ot) | W | 2-1 |
| at Drake* | W | 2-0 |
| #1 Southern Methodist* | L | 0-1 |
| Tulsa* (ot) | W | 2-1 |

MVC Tournament

| | | |
|------------------------|---|-----|
| Western Kentucky (2ot) | W | 1-0 |
| Creighton | L | 0-3 |

2002 9-11-0 (.450)

***MVC: 6-3 (3rd)**

Opponent W/L/T Result

Creighton Tournament

| | | |
|------------|---|-----|
| Notre Dame | L | 2-3 |
| Oakland | W | 3-2 |

Vermont Smith Barney Tournament

| | | |
|---------------|---|-----|
| New Hampshire | L | 0-1 |
| Vermont | L | 0-1 |

Saint Louis Tournament

| | | |
|------------------|---|-----|
| #24 Saint Louis | L | 1-2 |
| UC Santa-Barbara | L | 1-4 |

New Mexico Lobo Tournament

| | | |
|------------|---|-----|
| Air Force | L | 1-2 |
| New Mexico | L | 0-1 |

| | | |
|---------------------------|---|-----|
| Oral Roberts (ot) | W | 2-1 |
| at #5 Southern Methodist* | L | 0-2 |
| at #23 Tulsa* | W | 2-0 |
| Evansville* | L | 1-3 |
| #21 Creighton* | L | 0-1 |
| Drake* | W | 2-0 |
| at Vanderbilt* (ot) | W | 1-0 |
| at Western Kentucky* | W | 2-1 |
| #23 Bradley* | W | 2-0 |
| Eastern Illinois* | W | 2-1 |

MVC Tournament

| | | |
|---------------|---|-----|
| Tulsa (2ot) | W | 1-0 |
| #12 Creighton | L | 1-3 |

2003 9-7-3 (.553)

***MVC: 3-5-1 (8th)**

Opponent W/L/T Result

| | | |
|---------------|---|-----|
| at Valparaiso | W | 3-1 |
| Air Force | W | 1-0 |

Creighton Tournament

| | | |
|----------|---|-----|
| Portland | L | 0-2 |
| UNLV | L | 2-3 |

New Mexico Tournament

| | | |
|---------------------|---|-----|
| Western Illinois | W | 3-2 |
| at New Mexico (2ot) | T | 2-2 |

MSU Tournament

| | | |
|--------------|---|-----|
| IPFW | W | 1-0 |
| Oral Roberts | W | 1-0 |

| | | |
|------------------------|---|-----|
| #22 Tulsa* | L | 1-2 |
| #6 Southern Methodist* | W | 2-1 |
| at Drake* | L | 0-4 |
| Evansville* | L | 1-3 |
| at Creighton* | L | 0-2 |
| at Eastern Illinois* | W | 4-1 |
| at Bradley* (2ot) | T | 1-1 |

| | | |
|-------------------|---|-----|
| Western Kentucky* | L | 0-1 |
| Vanderbilt* | W | 4-1 |

MVC Tournament

| | | |
|-------------------|---|-----|
| at #19 Creighton | W | 1-0 |
| #19 Bradley (2ot) | T | 1-1 |

2004 11-6-2 (.605)

***MVC: 4-4-1 (5th)**

Opponent W/L/T Result

Creighton Tournament

| | | |
|------------------------|---|-----|
| Loyola Marymount (2ot) | T | 2-2 |
| Western Michigan | W | 1-0 |

Bradley Tournament

| | | |
|------------------|---|-----|
| Oregon State | W | 2-1 |
| Western Illinois | W | 1-0 |

| | | |
|----------------------------|---|-----|
| Oral Roberts | W | 3-0 |
| at Air Force | W | 3-1 |
| at UMKC | W | 1-0 |
| Valparaiso | W | 5-1 |
| at Western Kentucky* (2ot) | L | 1-2 |
| at Vanderbilt* | L | 0-1 |
| at Saint Louis | L | 2-3 |
| Evansville* | W | 5-1 |
| Eastern Illinois* | W | 3-0 |
| Bradley* (2ot) | T | 2-2 |
| at Tulsa* | W | 3-2 |
| at #4 Southern Methodist* | L | 1-2 |
| Drake * | L | 1-2 |
| #7 Creighton* | W | 1-0 |

MVC Tournament

| | | |
|----------|---|-----|
| at Tulsa | L | 0-2 |
|----------|---|-----|

2005 12-4-2 (.722)

***MVC: 4-3 (5th)**

Opponent W/L/T Result

| | | |
|---------------------------|---|-----|
| at Florida Atlantic (2ot) | W | 2-1 |
| at Florida International | W | 3-1 |

MSU Tournament

| | | |
|------------------------|---|-----|
| Centenary | W | 4-0 |
| #23 Oral Roberts (2ot) | T | 0-0 |

Bradley Tournament

| | | |
|-----------|---|-----|
| UC-Irvine | T | 0-0 |
| IPFW | W | 6-0 |

Evansville Tournament

| | | |
|---------|---|-----|
| Dayton | W | 1-0 |
| Belmont | W | 3-1 |

| | | |
|----------------------|---|-----|
| at Air Force (2ot) | W | 3-2 |
| at Western Kentucky* | W | 4-2 |
| at Creighton* | L | 0-2 |
| Vanderbilt* | W | 3-2 |
| Evansville* | W | 5-1 |
| at Eastern Illinois* | W | 1-0 |
| UMKC (ot) | W | |

Missouri State Men's Soccer Honors

NSCAA Midwest Coach of the Year

1997 Jon Leamy
1999 Jon Leamy

MVC Coach of the Year

1995 Jon Leamy
1997 Jon Leamy
1999 Jon Leamy

MVC All-Conference

1991 John Fulhorst, First team
Gary Imig, Second team
Kip Thompson, Second team
Simon Weiss, Second team
Derek Phillips, HM
1992 John Fulhorst, First team
Chris Hendricks, Second team
1993 Matt Caution, Second team
1994 Derek Phillips, Second team
C. Cheatham, HM
K. Haynes, HM
Dave Schall, HM
1995 Matt Caution, First team
Brad Jordan, First team
Chris Hendricks, Second team
Brad Barnes, HM
Mike Lamb, HM
Jerry Mercurio, HM
1996 Matt Caution, First team
Matt Callahan, Second team
Brad Jordan, Second team
Mike Lamb, Second team
Brad Barnes, HM
Cliff Curtis, HM
Wes Schulte, HM
1997 Matt Caution, First team
Brad Jordan, First team
Mark Modersohn, First team
Jerry Mercurio, Second team
Mike Lamb, HM
1998 Buch Wylie, First team
Jarod Bertrand, Second team
Nathan Dix, HM
Mark Modersohn, HM
Mike Williams, HM
1999 Mark Modersohn, First team
Jarod Bertrand, First team
Mike Williams, Second team

Chris Brunt, Second team
Quentin James, Second team
Matt Callahan, Second team
Severin Lwali, Second team
Aaron Rickard, HM
2000 Dan Watson, First team
Mark Modersohn, First team
Jarod Bertrand, Second team
Chris Brunt, HM
2001 Dan Watson, First team
Jamal Sutton, First team
Chris Brunt, First team
Matt Pickens, Second team
Jerod Bertrand, Second team
2002 Matt Pickens, First team
Dan Watson, First team
Jamal Sutton, Second team
Ryan Crawford, HM
2003 Doug Lascody, Second team
Matt Pickens, Second team
Jamal Sutton, Second team
Jon Watson, HM
2004 Doug Lascody, First team
Jon Watson, First team
Nick Pollard, Second team
Chris Deal, HM
2005 Ryan Anderson, First team
Danny May, First team
Justin Douglass, First team
Nathan Platz, Second team
Kai Harris, HM
Brian Pasierb, HM
2006 Ryan Anderson, First team
Justin Douglass, First team
Lance Parker, Second team
Andy Cooper, HM
Kyle Hopson, HM

MVC All-Newcomer Team

1995 Paul Jost
1996 Matt Callahan
1997 Nathan Dix
Mark Modersohn
1998 Jarod Bertrand
Chris Brunt
1999 James Hunt
Dan Watson
2000 Jason Woods

2001 Matt Pickens
Tom Scorfina
Josh Worth

MVC All-Freshman Team

2004 Chris Deal
Danny May
Ryan Anderson, HM
Andy Cooper, HM
2005 Kellington Boddie
Justin Alford
2006 Ryan Hennessy

MVC Player of the Year

1999 Mark Modersohn (Def.)
2005 Ryan Anderson (Co-POY)

MVC Freshman of the Year

1993 Matt Caution

MVC Newcomer of the Year

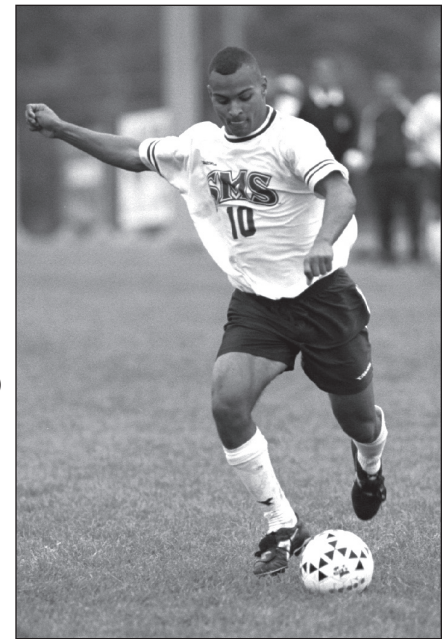
1997 Mark Modersohn

MVC All-Tournament Team

1991 Derek Phillips
Kip Thompson
1995 Matt Caution
Brad Jordan
1996 Matt Callahan
Cliff Curtis
1997 Matt Caution
Brad Jordan
Paul Jost
1998 Burch Wylie
Aaron Rickard
Severin Lwali
1999 Jarod Bertrand (MVP)
Mark Modersohn
Aaron Rickard
Severin Lwali
2001 Jarod Bertrand
Chris Brunt
2002 Matt Pickens
Dan Watson
2003 Doug Lascody
Matt Pickens
2004 Jon Watson
2005 Ryan Anderson
2006 Justin Douglass

MVC Player of the Week

1991 Tait Einerson (off.), Oct.
Kevin Beaudry (def.), Oct.
1992 Kevin Beaudry (def.), Sept.
1993 Chris Hendricks (def.), Sept.
Derek Phillips (off.), Sept.
Matt Caution (off.), Sept.
Derek Phillips (off.), Oct.
1994 Brad Barnes (def.), Oct.
Derek Phillips (off.), Oct.
Brad Jordan (off.), Nov.
1995 Matt Caution (off.), Sept.
Chris Hendricks (def.), Sept.
Brad Barnes (def.), Sept.
Brad Barnes (def.), Oct.
Jerry Mercurio (off.), Oct.
1996 Matt Caution (off.), Sept.
Brad Jordan (off.), Sept.
Wes Schulte (off.), Oct.
Brad Barnes (def.), Nov.
1997 Matt Caution (off.), Sept.
Jerry Mercurio (def.), Sept.
Brad Jordan (off.), Sept.
Mark Modersohn (def.), Oct.



Three-time All-MVC pick Chris Brunt

Nathan Dix (def.), Oct.
Brad Jordan (off.), Oct.
Mike Lamb (off.), Nov.
Matt Callahan (def.), Nov.
Matt Caution (off.), Nov.
1998 Matt Callahan (off.), Sept.
Mike Cortinas (off.), Oct.
Mike Williams (off.), Oct.
Mark Modersohn (def.), Oct.
1999 Severin Lwali (off.), Sept.
Mark Modersohn (def.), Sept.
Jarod Bertrand (off.), Sept.
Aaron Rickard (def.), Oct.
Mark Modersohn (def.), Oct.
2000 Mike Williams (off.), Sept.
Mark Modersohn (def.), Sept.
Jarod Bertrand (off.), Oct.
Mark Modersohn (def.), Sept.
2001 Matt Pickens (def.), Sept.
Matt Pickens (def.), Oct.
2002 Jed Hohlbein (off.), Nov.
2003 Doug Lascody (off.), Sept.
Matt Pickens (def.), Sept.
Jamal Sutton (off.), Oct.
2004 Danny May (off.), Sept.
Jon Watson (def.), Sept.
Nick Pollard (def.), Sept.
2005 Nathan Platz (def.), Sept.
Justin Douglass (def.), Sept.
Ryan Anderson (off.), Oct.
2006 Lance Parker (def.), Oct.
Ryan Anderson (off.), Oct.

MCC All-Conference

1989 Jim Thwing, First team
John Fulhorst, HM
Evan Palmer, HM

MCC Athlete of the Week

1989 Jim Thwing, Oct.



Two-time State Farm MVC All-Tournament selection Matt Pickens

Missouri State Team Honors



Lance Parker

Most Valuable

- 1992 Derek Phillips
- 1993 Derek Phillips
- 1994 Phillips-Schall
- 1995 Chris Hendricks
- 1996 Caution-Jordan
- 1997 Jerry Mercurio
- 1998 Burch Wylie
- 1999 Matt Callahan
- 2000 Quentin James
- 2001 Jamal Sutton
- 2002 Dan Watson
- 2003 Nick Pollard
- 2004 Nick Pollard
- 2005 Ryan Anderson
- 2006 Lance Parker



Alex Riggs

Most Improved

- 1992 Mike DeWeese
- 1993 Dan Disylvester
- 1994 Jeff Freeman
- 1995 Mark Beste
- 1996 Aaron Rickard
- 1997 Nick Howard
- 1998 Luke Ledbetter
- 1999 Severin Lwali
- 2000 Kevin Hansen
- 2001 Jon Watson
- 2002 Jacob Harris
- 2003 Justin Douglass
- 2004 Lance Parker
- 2005 Justin Alford
- 2006 Alex Riggs



Kellington Boddie

Newcomer of the Year

- 1992 Chris Hendricks
- 1993 Matt Caution
- 1994 Casey Cheatham
- 1995 Mike Lamb
- 1996 Matt Callahan
- 1997 Mark Modersohn
- 1998 Jarod Bertrand
- 1999 Dan Watson
- 2000 Jamal Sutton
- 2001 Matt Pickens
- 2002 Ryan Crawford
- 2003 Justin Douglass
- 2004 Danny May
- 2005 Kellington Boddie
- 2006 Ryan Hennessy



Justin Douglass

Team Captain(s)

- 1992 Fulhorst-Nolan
- 1993 Derek Phillips
- 1994 Derek Phillips
- 1995 Chris Hendricks
- 1996 Barnes-Haynes
- 1997 Mercurio-Callahan
- 1998 Modersohn-Wylie
- 1999 Callahan-Modersohn
- 2000 Modersohn-James
- 2001 Dan Watson
- 2002 Watson-Pickens
- 2003 Pollard-Pickens
- 2004 Pollard-Levesque
- 2005 K. Harris-Douglass
- 2006 Parker-Douglass



Justin Douglass

Bear Award

- 1992 Dan Nolan
- 1993 Chris Hendricks
- 1994 Dave Schall
- 1995 Brad Barnes
- 1996 Cory Carr
- 1997 Mike Lamb
- 1998 Vince Pinion
- 1999 Aaron Rickard
- 2000 Quentin James
- 2001 Randy Graham
- 2002 Matt Pickens
- 2003 Doug Lascody
- 2004 Jon Watson
- 2005 Nathan Platz
- 2006 Justin Douglass



Lance Parker

Scholar-Athlete

- 1992 John Fulhorst
- 1993 Brad Barnes
- 1994 Brad Barnes
- 1995 Brad Barnes
- 1996 Brad Barnes
- 1997 Conor Haseltine
- 1998 Conor Haseltine
- 1999 Conor Haseltine
- 2000 Conor Haseltine
- 2001 Randy Graham
- 2002 Jim Levesque
- 2003 Josh Ries-Wandrey
- 2004 Doug Lascody
- 2005 Lance Parker
- 2006 Lance Parker

Playing the Best

Major League Soccer

Missouri State has played against the best during the spring schedule over the last several years to prepare the team for the fall schedule, as the Bears have played numerous exhibition contests against Major League Soccer teams.

The Bears have played host to the Kansas City Wizards for the past five seasons. This past spring, Missouri State hosted the Wizards for the first time at Plaster Field.

The annual fall contest against the Wizards has become a fan favorite for soccer fans across the Springfield area. In 2006, the game drew over 1,100 fans to Cooper Sports Complex and the move to the on-campus Plaster Field drew 1,654 patrons.



Missouri State All-Time Letterwinners

| | | | | | | | |
|---------------------------|-------------------|-------------------------|----------------|----------------------|----------------|--------------------------|-----------------|
| Abeln, Tim | 1981-82 | Flavin, Timothy | 1984 | Lundgren, Robert | 1984-85-86 | Reilly, Kevin | 1994-95-96-98 |
| Adams, Aaron | 1993-94-95-96 | Fluchel, Jon | 1982-83 | Lwali, Severin | 1997-98-99 | Rettenmaier, Paul | 1991-92 |
| Adams, Eric | 1985-86-87-88 | Franklin, Ronnie | 2006 | Lynch, Jerry | 1981-82 | Rickard, Aaron | 1996-97-98-99 |
| Alford, Justin | 2005-06 | Freeman, Jeff | 1996 | Lyons, Dan | 1983 | Ritter, Chris | 1992 |
| Allen, Jeff | 1991 | Fulhorst, John | 1989-90-91-92 | MacBryde, Kevin | 1988-89-90-91 | Robinson, Chris | 2002-03 |
| Anderson, Ryan | 2004-05-06 | Gibson, David | 1981 | Macking, Mike | 1987 | Robinson, Ken | 1981 |
| Arevalo, Mark | 1983-84-85-86 | Giedus, Christian | 2002 | Marker, Ken | 1987 | Rogers, John | 1984-85 |
| Baldwin, Sean | 1996 | Giovanni, Tom | 1987-88-89 | Mateja, Marc | 1987-88 | Rogers, Mike | 1989-90 |
| Barnes, Brad | 1993-94-95-96 | Haines, Brian | 1984 | Mattingly, Matt | 1983 | Roques, Dennis | 1986 |
| Baumgart, Ben | 2000 | Hanebrink, Dan | 1986 | May, Danny | 2004-05-06 | Schall, Dave | 1993-94 |
| Beaudry, Kevin | 1990-91-92 | Hansen, Kevin | 2000-01-02-03 | Mayes, Steve | 1993-94-96 | Schmitz, Chuck | 1985-86-87-88 |
| Beck, Matt | 1991-92 | Harden, Steve | 1981-82 | McCarthy, Leo | 1982-83 | Schoenbein, Eddie | 1995 |
| Beeson, Barrett | 1995-96 | Harper, Craig | 1985 | McDonough, Kevin | 1990 | Schulte, Wes | 1994-95-96 |
| Bennett, Michael | 2004-05 | Harris, Jacob | 2002-03-04-05 | McEvoy, Bryan | 1990 | Scorfina, Tom | 2001 |
| Bertrand, Jarod | 1998-99-00-01 | Harris, Kai | 2002-03-04-05 | McHugh, Patrick | 1981-82 | Shoucair, Omar | 2006 |
| Beste, Mark | 1995 | Hartnagel, Jack | 1988 | McKinney, Steve | 1982 | Siegal, Matt | 2002 |
| Bixby, Martin | 1983 | Haseltine, Conor | 1997-98-99-00 | Mehegan, Dennis | 1982-83 | Sinak, William | 1983 |
| Boddie, Kellington | 2005-06 | Hatley, Andy | 1999 | Mercurio, Jerry | 1994-95-96-97 | Sleeper, Tim | 1996 |
| Boleski, Gene | 1981-82 | Hayden, Sonny | 1989 | Metzler, Mark | 1981-82-83 | Snyder, Daniel | 1984 |
| Boshert, Lincoln | 1984 | Haynes, Kenon | 1993-94-95-96 | Meyer, Matt | 1987-88-89-90 | Stayton, Sean | 1984-85-86-87 |
| Boyle, Chuck | 1998-99 | Hendricks, Chris | 1992-93-94-95 | Miles, Geoff | 2000 | Stoner, Greg | 1992 |
| Brunt, Chris | 1998-99-00-01 | Hennessy, Ryan | 2006 | Miller, Hondo | 1992 | Sutton, Jamal | 2000-01-02-03 |
| Burkholder, Kent | 1981 | Hesser, Greg | 1984-85-86-87 | Modersohn, Mark | 1997-98-99-00 | Swain, Scott | 1990-91 |
| Bush, Thomas | 1983-84 | Higginbotham, Neal | 1983 | Molski, Andy | 1987 | Tagger, Shaun | 2001 |
| Callahan, Matt | 1996-97-98-99 | Hilgenbrinck, Blaise | 1999-00 | Morton, T.J. | 1999-00 | Thompson, Kip | 1988-89-90-91 |
| Carr, Cory | 1993-94-95-96 | Hittler, Ken | 1984-85-86-87 | Muller, Bill | 1988-89-90-91 | Thuet, Kirk | 1983 |
| Caution, Matt | 1993-95-96-97 | Hlavaty, Brett | 1994 | Ndikum, Chi | 1986 | Thwing, Jim | 1989-90 |
| Ceccarini, Ron | 1985-86-87-88 | Hohlbein, Jed | 2001-02 | Nolan, Dan | 1989-90-91-92 | Tullo, George | 1985-86 |
| Cheatham, Casey | 1994-95 | Hopson, Kyle | 2005-06 | O'Connell, Brian | 1983-84-85-86 | Turner, Scott | 1992 |
| Cleveland, Doug | 1992 | Hyde, Charlie | 1986-87-88 | Odendahl, Kurt | 1982 | Wallace, Brian | 1999 |
| Cole, Kort | 1988-89 | Howard, Nick | 1996-97-98-99 | Oliveira, Sergio | 1981 | Watson, Dan | 1999-00-01-02 |
| Collett, Tim | 1981-82-83 | Hunt, Dennis | 1982-83-84 | Palmer, Evan | 1986-87-88-89 | Watson, Jon | 2001-02-03-04 |
| Cook, Edward | 1983-84-85 | Hunt, James | 1999 | Pappert, Mark | 1988 | Webert, Nick | 1993 |
| Cooper, Andy | 2004-05-06 | Hutchinson, Michael | 2002-03 | Parker, Lance | 2004-06 | Weismiller, Mike | 1989-90 |
| Cortinas, Mike | 1997-98-99-00 | Hyde, Chris | 2002 | Pasierb, Brian | 2003-04-05-06 | Weiss, Simon | 1990-91 |
| Craig, Jeffery | 1981 | Imig, Gary | 1990-91 | Perkins, Drew | 2000 | Welch, Joe | 2005-06 |
| Crawford, Ryan | 2002-03-04-05 | James, Quentin | 1997-98-99-00 | Peters, Shawn | 1987, 89-90 | Wessley, Adam | 2001 |
| Cross, Kevin | 1991 | Johnson, Thalyan | 1999-00-01 | Phillips, Derek | 1991-92-93-94 | White, Peter | 1994-95 |
| Curtis, Cliff | 1993-94-95-96 | Jordan, Brad | 1994-95-96-97 | Piatckek, Chris | 1984-85-87-88 | Willett, John | 1982-83 |
| Daes, Kirk | 1995 | Joseph, Yanik | 2005-06 | Piatckek, Mike | 1983-84 | Williams, Brett | 2004-05-06 |
| Daus, Mark | 1982-83-84 | Jost, Paul | 1995-96-97-98 | Pickens, Matt | 2001-02-03 | Williams, Mike | 1997-98-99-2000 |
| DeWeese, Mike | 1992 | Keeling, Evan | 2003 | Piepert, Jason | 2002 | Windmueller, Kyle | 2006 |
| Dey, Mike | 1990 | Kellermann, Mike | 1988 | Piñon, Vince | 1996-97-98 | Woods, Jason | 2000 |
| Dix, Nathan | 1997-98 | Kruse, Edward | 1981-82 | Platz, Nathan | 2003-04-05 | Wooten, James | 1981-82 |
| Douglass, Justin | 2003-04-05-06 | Lamb, Mike | 1995-96-97 | Pollard, Nick | 2001-02-03-04 | Worth, Josh | 2001 |
| Dryden, Nick | 2006 | Lascodey, Doug | 2001-02-03-04 | Pope, Addison | 2003-04 | Wyland, Dan | 1983 |
| Duker, John | 1997-98-99-00 | Lawrence, Henry | 2004-05 | Popp, Andy | 1986 | Wylie, Burch | 1994-95-97-98 |
| Eimerson, Tait | 1991-92 | Levesque, Jim | 2001-02-03-04 | Powers, Bernie | 1986-87 | Ziegahn, Will | 2006 |
| Fiacco, Jerry | 1985-86-88-89 | Ledbetter, Luke | 1998-99-00 | Putnam, Robert | 1981 | | |
| Finnegan, Dennis | 1981-82 | Lembeck, Jamie | 1992-93-94 | Ralston, David | 1984-85 | | |

Bold type indicates active player.

Missouri State Records Against All Opponents

| <u>MVC Schools</u> | <u>MSU Record</u> | | |
|------------------------------------|-------------------|--|----------------|
| Bradley University | 15-6-2 | Fontbonne College | 1-0-0 |
| Creighton University | 6-17-2 | Friends University | 1-0-0 |
| Drake University | 7-9-2 | Georgetown University | 1-0-0 |
| Eastern Illinois University | 13-4-0 | Georgia Southern University | 1-0-0 |
| Evansville, University of | 7-6-2 | Gonzaga University | 3-0-0 |
| Western Kentucky University | 11-4-0 | Greenville College | 1-0-0 |
| | | Hardin-Simmons University | 0-1-0 |
| | | Illinois, University of-Chicago | 1-0-0 |
| | | Illinois, University of-Springfield | 0-2-0 |
| | | Illinois State University | 0-10-0 |
| | | Indiana Univ. Purdue Univ.-Fort Wayne | 2-0-0 |
| | | Indiana Univ. Purdue Univ.-Indianapolis | 0-0-0 |
| | | John Brown University | 2-2-3 |
| | | Kansas Newman College | 1-0-1 |
| | | Kentucky Wesleyan College | 0-1-0 |
| | | Louisville, University of | 0-1-0 |
| | | Loyola Marymount University | 1-0-1 |
| | | Loyola University of Chicago | 2-0-0 |
| | | Maryville College | 3-1-1 |
| | | McKendree College | 1-0-0 |
| | | Memphis, University of | 3-4-1 |
| | | Midwestern State University | 0-2-0 |
| | | Minnesota, University of | 1-0-0 |
| | | Missouri Baptist College | 1-0-0 |
| | | Missouri, University of-Kansas City | 13-2-0 |
| | | Missouri, University of-Rolla | 10-4-1 |
| | | Missouri, University of-St. Louis | 1-8-0 |
| | | Missouri Southern State College | 9-4-1 |
| | | Missouri Valley College | 1-0-0 |
| | | Nevada-Las Vegas, University of | 0-2-0 |
| | | New Hampshire, University of | 0-1-0 |
| | | New Mexico, University of | 2-2-1 |
| | | North Carolina, University of | 0-1-0 |
| | | North Central College | 1-0-0 |
| | | North Florida, University of | 0-0-1 |
| | | Northeastern Illinois University | 2-0-0 |
| | | Northeastern (Okla.) State University | 5-1-1 |
| | | Northern Illinois University | 1-2-0 |
| | | Northwestern University | 0-1-0 |
| | | Notre Dame, University of | 0-1-0 |
| | | Oakland, University of | 1-0-0 |
| | | Ohio State University | 0-1-0 |
| | | Oklahoma City University | 0-1-0 |
| | | Oral Roberts University | 10-2-2 |
| | | Oregon State University | 1-0-0 |
| | | Park College | 0-1-0 |
| | | Penn State University | 0-1-0 |
| | | Portland, University of | 0-1-0 |
| | | Quincy University | 1-7-0 |
| | | Robert Morris (Pa.) University | 0-1-0 |
| | | Rockhurst College | 1-10-0 |
| | | Roosevelt University | 1-0-0 |
| | | Saint Louis University | 0-7-3 |
| | | San Diego State University | 0-0-0 |
| | | South Carolina, University of | 0-1-0 |
| | | Southeast Missouri State University | 5-3-0 |
| | | Southern Illinois University-Edwardsville | 0-6-0 |
| | | Southern Indiana, University of | 0-4-0 |
| | | Southern Methodist University | 2-10-0 |
| | | Southern Nazarene University | 0-2-0 |
| | | Southwest Baptist University | 2-0-0 |
| | | Stony Brook University | 1-0-0 |
| | | Tarkio College | 1-0-0 |
| | | Texas, University of-Pan American | 1-2-0 |
| | | Texas Christian University | 7-4-0 |
| | | Truman State University | 1-4-0 |
| | | Tulsa, University of | 11-21-1 |
| | | Valparaiso University | 5-0-0 |
| | | Vanderbilt University | 7-4-0 |
| | | Vermont, University of | 0-1-0 |
| | | Washington University, St. Louis | 0-1-0 |
| | | Washington, University of | 1-0-0 |
| | | Western Illinois University | 12-5-0 |
| | | Western Michigan University | 1-0-1 |
| | | William Jewell College | 1-0-0 |
| | | Wisconsin, University of | 1-0-0 |
| | | Wisconsin, University of-Green Bay | 2-0-0 |
| | | Wisconsin, University of-Milwaukee | 1-0-0 |
| | | Wisconsin, University of-Parkside | 0-1-0 |
| | | Yale University | 1-0-0 |

Bold type indicates 2007 opponents.

2007 Missouri State Opponents

Centenary College

Saturday, Sept. 1 -- 7 p.m.
Plaster Field

Location.....Shreveport, La.
President.....Dr. Kenneth L. Schwab
Enrollment.....1,017
Nickname.....Gents
Colors.....Maroon and White
Conference.....The Summit League
Facility.....Mayo Field
Capacity.....N/A
Athletics Director.....Glenn Evans
Head Coach.....Eric Mayo
Record at CC.....14-31-3 (3 years)
Overall Record.....Same
Assistants.....TBD
Soccer SID.....Tony Black
Office.....(318) 841-7260
Fax.....(318) 869-5128
Email.....ablack@centenary.edu
Web.....www.goacentenary.com
2006 Record.....5-11
Conference Record.....2-4 in Mid-Con (7-7)
Series Record.....MSU leads, 7-0
Starters Returning/Lost.....10/1
Letterwinners Returning/Lost.....13/8

Oral Roberts University

Friday, Sept. 14 -- 2 p.m.
Tulsa, Okla.

Location.....Tulsa, Okla.
President.....Dr. Richard Roberts
Enrollment.....5,389
Nickname.....Golden Eagles
Colors.....Navy Blue Vegas Gold and White
Conference.....The Summit League
Facility.....ORU Soccer Complex
Capacity.....1,000
Athletics Director.....Mike Carter
Head Coach.....Steve Hayes
Record at ORU.....71-78-11 (9 years)
Overall Record.....Same
Assistant.....Ryan Bush
Soccer SID.....Cliff Martin
Office.....(918) 495-7094
Fax.....(918) 495-7142
Email.....clmartin@oru.edu
Web.....www.orugoldeneagles.com
2006 Record.....6-8-4
Conference Record.....3-3 in Mid-Con (T-3rd)
Series Record.....MSU leads, 10-2-2
Starters Returning/Lost.....8/3
Letterwinners Returning/Lost.....15/5

University of Illinois-Chicago

Friday, Sept. 28 -- 5 p.m.
Peoria, Ill.

Location.....Chicago, Ill.
President.....B. Joseph White
Enrollment.....24,541
Nickname.....Flames
Colors.....Navy blue and Fire engine red
Conference.....Horizon League
Facility.....Flames Field
Capacity.....1,000
Athletics Director.....James W. Schmidt
Head Coach.....John Trask
Record at UIC.....1-23-8-7 (2 years)
Overall Record.....Same
Assistants.....Sean Phillips, Aleksey Korol
Soccer SID.....John Jaramillo
Office.....(312) 996-5880
Fax.....(312) 996-8349
Email.....jjar@uic.edu
Web.....www.uicflames.com
2006 Record.....13-3-5
Conference Record.....5-1-1 in Horizon (1st)
Series Record.....MSU leads, 1-0
Starters Returning/Lost.....7/4
Letterwinners Returning/Lost.....12/9

University of North Florida

Tuesday, Sept. 4 -- 8 p.m.
Plaster Field

Location.....Jacksonville, Fla.
President.....John Delaney
Enrollment.....16,000
Nickname.....Ospreys
Colors.....Navy blue and Gray
Conference.....Atlantic Sun
Facility.....UNF Soccer Stadium
Capacity.....9,300
Athletics Director.....Dr. Richard Gropper
Head Coach.....Ray Bunch
Record at UNF.....132-119-21 (16 years)
Overall Record.....Same
Assistant.....Marcello Marshall
Soccer SID.....Tom Strother
Office.....(904) 620-4026
Fax.....(904) 620-2821
Email.....tstrothe@unf.edu
Web.....www.unfospreys.com
2006 Record.....6-11-2
Conference Record.....1-5-1 in Atlantic Sun (T-7th)
Series Record.....Series tied, 0-0-1
Starters Returning/Lost.....8/3
Letterwinners Returning/Lost.....16/3

University of Tulsa

Sunday, Sept. 16 -- 2:35 p.m.
Tulsa, Okla.

Location.....Tulsa, Okla.
President.....Dr. Steadman Upham
Enrollment.....4,100
Nickname.....Golden Hurricane
Colors.....Old Gold, Royal Blue and Crimson
Conference.....Conference USA
Facility.....Hurricane Soccer & Track Stadium
Capacity.....2,000
Athletics Director.....Bubba Cunningham
Head Coach.....Tom McIntosh
Record at TU.....121-96-19 (12 years)
Overall Record.....Same
Assistants.....Colin Clarke, Justin Cook, Chris Mansfield
Soccer SID.....Stephanie Hall
Office.....(918) 631-2163
Fax.....(918) 631-3913
Email.....stephanie-hall@tulsa.edu
Web.....www.tulshurricane.com
2006 Record.....9-10
Conference Record.....5-3 in C-USA (3rd)
Series Record.....TU leads, 21-11-1
Starters Returning/Lost.....9/3
Letterwinners Returning/Lost.....17/6

IUPUI

Saturday, Sept. 29 -- 5 p.m.
Peoria, Ill.

Location.....Indianapolis, Ind.
Chancellor.....Charles Bantz
Enrollment.....29,933
Nickname.....Jaguars
Colors.....Red, Gold and Black
Conference.....The Summit League
Facility.....Kuntz Stadium
Capacity.....N/A
Athletics Director.....Michael R. Moore
Head Coach.....Steve Franklin
Record at IUPUI.....98-115-13 (12 years)
Overall Record.....Same
Assistants.....Mo Cato, Matt Reiswerg
Soccer SID.....Ed Holdaway
Office.....(317) 274-2725
Fax.....(317) 278-2683
Email.....eholdawa@iupui.edu
Web.....www.iupuijags.com
2006 Record.....8-11
Conference Record.....3-3 in Mid-Con (T-3rd)
Series Record.....First meeting
Starters Returning/Lost.....6/5
Letterwinners Returning/Lost.....14/10

University of Central Arkansas

Friday, Sept. 7 -- 7 p.m.
Plaster Field

Location.....Conway, Ark.
President.....Lu Hardin
Enrollment.....12,400
Nickname.....Bears
Colors.....Purple and Gray
Conference.....Independent
Facility.....Farris Field
Capacity.....300
Athletics Director.....Dr. Brad Teague
Head Coach.....Chad Flanders
Record at UCA.....42-23-9 (4 years)
Overall Record.....same
Assistant.....none
Soccer SID.....Josh Goff
Office.....(501) 450-5695
Fax.....(501) 450-5740
Email.....jgoff@uca.edu
Web.....www.ucasports.com
2006 Record.....6-8-2
Conference Record.....N/A
Series Record.....MSU leads, 1-0
Starters Returning/Lost.....7/4
Letterwinners Returning/Lost.....13/8

San Diego State University

Friday, Sept. 21 -- 7 p.m.
Las Vegas, Nev.

Location.....San Diego, Calif.
President.....Dr. Stephen L. Weber
Enrollment.....35,887
Nickname.....Aztecs
Colors.....Scarlet and Black
Conference.....Pac-10
Facility.....SDSU Sports Deck
Capacity.....N/A
Athletics Director.....Jeff Schemmel
Head Coach.....Lev Kirschner
Record at SDSU.....48-65-22 (7 years)
Overall Record.....Same
Assistants.....Matt Hail, Oscar Rodriguez, Kevin Sapanli
Soccer SID.....Jamie McConeghy
Office.....(619) 594-4348
Fax.....(619) 582-6541
Email.....jmcconeg@mail.sdsu.edu
Web.....www.goaztecs.com
2006 Record.....9-6-4
Conference Record.....5-2-3 in Pac-10 (2nd)
Series Record.....First meeting
Starters Returning/Lost.....7/4
Letterwinners Returning/Lost.....18/6

Southern Methodist University

Wednesday, Oct. 3 -- 7 p.m.
Dallas, Texas

Location.....Dallas, Texas
President.....R. Gerald Turner
Enrollment.....10,901
Nickname.....Mustangs
Colors.....Red and Blue
Conference.....Conference USA
Facility.....Westcott Field
Capacity.....4,000
Athletics Director.....Steve Orsini
Head Coach.....Schellas Hyndman
Record at SMU.....354-93-36 (23 years)
Overall Record.....452-117-47 (30 years)
Assistants.....Tim McClements, Jason Higgins
Soccer SID.....Claire Schmitt
Office.....(214) 768-1054
Fax.....(214) 768-2044
Email.....claires@smu.edu
Web.....www.smumustangs.com
2006 Record.....17-2-4
Conference Record.....5-1-2 in C-USA (1st)
Series Record.....SMU leads, 10-2
Starters Returning/Lost.....8/3
Letterwinners Returning/Lost.....N/A

Western Illinois University

Saturday, Sept. 8 -- 7 p.m.
Plaster Field

Location.....Macomb, Ill.
President.....Dr. Alvin Goldfarb
Enrollment.....13,404
Nickname.....Leathernecks
Colors.....Purple and Gold
Conference.....The Summit League
Facility.....John MacKenzie Alumni Field
Capacity.....1,000
Athletics Director.....Dr. Tim M. Van Alstine
Head Coach.....Eric Johnson
Record at WIU.....85-107-11 (10 years)
Overall Record.....124-139-15 (15 years)
Assistants.....TBD
Soccer SID.....Brock Wissmiller
Office.....(309) 298-1133
Fax.....(309) 298-2060
Email.....bd-wissmiller@wiu.edu
Web.....www.wiuathletics.com
2006 Record.....15-8
Conference Record.....5-1 in Mid-Con (1st)
Series Record.....MSU leads, 12-5
Starters Returning/Lost.....6/5
Letterwinners Returning/Lost.....14/10

University of Nevada-Las Vegas

Saturday, Sept. 22 -- 9:30 p.m.
Las Vegas, Nev.

Location.....Las Vegas, Nev.
President.....Dr. David B. Ashley
Enrollment.....28,000
Nickname.....Rebels
Colors.....Scarlet and Gray
Conference.....Mountain West
Facility.....Peter Johann Memorial Field
Capacity.....2,500
Athletics Director.....Mike Hamrick
Head Coach.....Mario Sanchez
Record at UNLV.....1-15-2 (1 year)
Overall Record.....Same
Assistants.....Chad Brown, Michael Hamilton
Soccer SID.....Mark Wasik
Office.....(702) 895-3208
Fax.....(702) 895-0989
Email.....mark.wasik@unlv.edu
Web.....www.UNLVrebels.com
2006 Record.....1-15-2
Conference Record.....1-9 in MWC (6th)
Series Record.....UNLV leads, 2-0
Starters Returning/Lost.....7/4
Letterwinners Returning/Lost.....12/9

Alabama A&M University

Saturday, Oct. 6 -- 7 p.m.
Plaster Field

Location.....Huntsville, Ala.
President.....Dr. Robert R. Jennings
Enrollment.....6,000
Nickname.....Bulldogs
Colors.....Maroon and White
Conference.....Independent
Facility.....AAMU Soccer Field
Capacity.....500
Athletics Director.....Betty K. Austin
Head Coach.....Salah Youusif
Record at AAMU.....217-96-19 (18 years)
Overall Record.....265-103-20 (22 years)
Assistants.....None
Soccer SID.....Thomas Galbraith
Office.....(256) 372-4005
Fax.....(256) 372-5919
Email.....aamusportsinfo@yahoo.com
Web.....www.aamusports.com
2006 Record.....6-8-1
Conference Record.....N/A
Series Record.....AAMU leads, 1-0
Starters Returning/Lost.....11/0
Letterwinners Returning/Lost.....15/4

2007 Missouri State Opponents

Western Kentucky University

Saturday, Oct. 13 -- 7 p.m.
Bowling Green, Ky.

Location.....Bowling Green, Kent.
President.....Dr. Gary Ransdell
Enrollment.....18,645
Nickname.....Hilltoppers
Colors.....Red and White
Conference.....Missouri Valley
Facility.....WKU Soccer Complex
Capacity.....1,000
Athletics Director.....Dr. Camden Wood Selig
Head Coach.....David Holmes
Record at WKU.....207-214-28 (22 years)
Overall Record.....Same
Assistants.....Sean Helliwell
Soccer SID.....John Brett Reynolds
Office.....(270) 745-4298
Fax.....(270) 745-3444
Email.....john.reynolds1@wku.edu
Web.....www.wkusports.com
2006 Record.....4-9-3
Conference Record.....0-4-2 in MVC (7th)
Series Record.....MSU leads, 11-4
Starters Returning/Lost.....6/5
Letterwinners Returning/Lost.....11/5

Univ. of Missouri-Kansas City

Wednesday, Oct. 31 -- 7 p.m.
Plaster Field

Location.....Kansas City, Mo.
Chancellor.....Dr. Guy H. Bailey
Enrollment.....14,221
Nickname.....Kangaroos
Colors.....Blue and Gold
Conference.....The Summit League
Facility.....Swope Park
Capacity.....1,000
Athletics Director.....Tim Hall
Head Coach.....Rick Benben
Record at UMKC.....66-88-12 (9 years)
Overall Record.....Same
Assistant.....Fred Schlichting
Soccer SID.....John Roushkolb
Office.....(816) 235-1053
Fax.....(816) 235-1035
Email.....JohnRoushkolb@umkc.edu
Web.....www.umkckangaroos.com
2006 Record.....5-13-2
Conference Record.....4-2 in Mid-Con (2nd)
Series Record.....MSU leads, 13-2
Starters Returning/Lost.....8/3
Letterwinners Returning/Lost.....17/4

Eastern Illinois University

Wednesday, Oct. 17 -- 3 p.m.
Charleston, Ill.

Location.....Charleston, Ill.
President.....Dr. William Perry
Enrollment.....12,349
Nickname.....Panthers
Colors.....Blue and Gray
Conference.....Ohio Valley/Missouri Valley
Facility.....Lakeside Field
Capacity.....1,000
Athletics Director.....Dr. Richard McDuffie
Head Coach.....Adam Howarth
Record at EIU.....52-67-10 (7 years)
Overall Record.....Same
Assistants.....Dino Raso, Chad Jones
Soccer SID.....Ben Turner
Office.....(217) 581-7020
Fax.....(217) 581-6434
Email.....bvturner@eiu.edu
Web.....www.EIUpanters.com
2006 Record.....11-7-2
Conference Record.....1-3-2 in MVC (6th)
Series Record.....MSU leads, 13-4
Starters Returning/Lost.....9/2
Letterwinners Returning/Lost.....19/4

University of Evansville

Saturday, Nov. 3 -- 7 p.m.
Plaster Field

Location.....Evansville, Ind.
President.....Dr. Stephen Jennings
Enrollment.....2,434
Nickname.....Purple Aces
Colors.....Purple, White and Orange
Conference.....Missouri Valley
Facility.....Black Beauty Field
Capacity.....2,000
Athletics Director.....John Stanley
Head Coach.....Mike Jacobs
Record at UE.....9-8-0 (1 year)
Overall Record.....38-49-5 (5 years)
Assistants.....Marshall Ray, Mike Miller, Robbie Roate
Soccer SID.....Robert Boxell
Office.....(812) 488-2285
Fax.....(812) 488-2090
Email.....bb33@evansville.edu
Web.....GoPurpleAces.com
2006 Record.....9-8
Conference Record.....2-4 in MVC (5th)
Series Record.....MSU leads, 7-6-2
Starters Returning/Lost.....7/4
Letterwinners Returning/Lost.....14/8

Bradley University

Saturday, Oct. 20 -- 7 p.m.
Plaster Field

Location.....Peoria, Ill.
President.....TBD
Enrollment.....6,127
Nickname.....Braves
Colors.....Red and White
Conference.....Missouri Valley
Facility.....Shea Stadium
Capacity.....1,700
Athletics Director.....Ken Kavanagh
Head Coach.....Jim DeRose
Record at BU.....127-79-21 (11 years)
Overall Record.....Same
Assistants.....Brad Ruzzo, Preston Good
Soccer SID.....Bobby Parker
Office.....(309) 677-2624
Fax.....(309) 677-2626
Email.....bparker@bradley.edu
Web.....www.bubraves.com
2006 Record.....8-8-4
Conference Record.....4-1-1 in MVC (T-1st)
Series Record.....MSU leads, 15-6-2
Starters Returning/Lost.....9/2
Letterwinners Returning/Lost.....21/4

Drake University

Saturday, Nov. 10 -- 7 p.m.
Plaster Field

Location.....Des Moines, Iowa
President.....David Maxwell
Enrollment.....5,366
Nickname.....Bulldogs
Colors.....Blue and White
Conference.....Missouri Valley
Facility.....Cownie Soccer Complex
Capacity.....1,000
Athletics Director.....Sandy Hatfield
Head Coach.....Sean Holmes
Record at DU.....65-84-17 (9 years)
Overall Record.....143-110-19 (14 years)
Assistant.....Joe Burger
Soccer SID.....Anthony Reynolds
Office.....(515) 271-3740
Fax.....(515) 271-3015
Email.....anthony.reynolds@drake.edu
Web.....www.drakebulldogs.org
2006 Record.....6-7-6
Conference Record.....2-1-3 in MVC (4th)
Series Record.....Drake leads, 9-7-2
Starters Returning/Lost.....4/7
Letterwinners Returning/Lost.....N/A

Creighton University

Saturday, Oct. 27 -- 7 p.m.
Omaha, Neb.

Location.....Omaha, Neb.
President.....Rev. John P. Schlegel, S.J.
Enrollment.....6,981
Nickname.....Bluejays
Colors.....Blue and White
Conference.....Missouri Valley
Facility.....Morrison Stadium
Capacity.....6,000
Athletics Director.....Bruce Rasmussen
Head Coach.....Bob Warming
Record at CU.....155-52-22 (11 years)
Overall Record.....348-171-52 (29 years)
Assistants.....Jason Mims, Johnny Torres
Soccer SID.....Rob Simms
Office.....(402) 280-2433
Fax.....(402) 280-2495
Email.....rsimms@creighton.edu
Web.....www.gocreighton.com
2006 Record.....13-5-3
Conference Record.....4-1-1 in MVC (T-1st)
Series Record.....CU leads, 17-6-2
Starters Returning/Lost.....5/6
Letterwinners Returning/Lost.....13/9

Missouri State University is a community of people with respect for diversity. The University emphasizes the dignity and equality common to all persons and adheres to a strict nondiscrimination policy regarding the treatment of individual faculty, staff, and students. In accord with federal law and applicable Missouri statutes, the University does not discriminate on the basis of race, color, religion, sex, national origin, ancestry, age, disability, or veteran status in employment or in any program or activity offered or sponsored by the University. In addition, the University does not discriminate on any basis not related to the applicable educational requirements for students or the applicable job requirements for employees. The University maintains a grievance procedure incorporating due process available to any person who believes he or she has been discriminated against. Missouri State University is an Equal Opportunity/Affirmative Action employer. Inquiries concerning the grievance procedure, Affirmative Action Plan, or compliance with federal and state laws and guidelines should be addressed to Jana Estergard, Equal Opportunity Officer, Sicheluff Hall 296, 901 South National Avenue, Springfield, MO 65804, 417-836-4252.

The Official Site of Missouri State University Athletics

Men's Soccer

Missouri State Bears: No Current Scores

| | | | | | | |
|----------|---------------|---------------|---------------|--------------|---------------|------------|
| Baseball | Basketball(M) | Basketball(W) | Cross Country | Field Hockey | Football | Golf(M) |
| Golf(W) | Soccer(M) | Soccer(W) | Softball | Swimming | Track & Field | Volleyball |

Home | Schedules/Results | Roster | Coaches | Statistics | Media Guide | Season Review | Archives | Camps

Missouri State University
Achievement Center for Intercollegiate Athletics
Athletic Training
Athletics Development
Athletics Schedule
Bookstore/Online store
Mobile
Broadcast information
Compliance Information
Corporate Sponsorship Opportunities
Facilities
Gateway Football Conference
Intercollegiate Athletics
Competition
JOP! Arena
Live Stats
Mid-American Conference
Mission Statement
Missouri Valley Conference
MSU Athletics Hall of Fame
NCAA
News Releases

Schedule Results
There are no results to display at this time.

Missouri State Athletics
EVERYDAY IS GAME DAY!

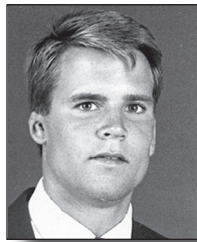
Soccer Bears to host Kansas City Wizards
The Missouri State men's soccer team will host Major League Soccer's Kansas City Wizards in an exhibition match at Plaster Sports Complex on Monday, April 30, at 7 p.m. Tickets are now available. More...

Register/More Info



Find out more about Bears' Soccer at www.missouristatebears.com

Missouri State Alumni News - Where are they now?



Eric Adams
B.S. Biology

Medical Computer
Sales

Scimage Inc.

1985-88

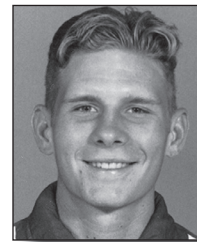


Kevin Beaudry
B.S. Administrative
Management

Supervisor of Network
Implementation

Charter
Communications

1990-92



Cory Carr
B.S. Psychology

Director of Therapy
Services

Integrity Home Care

1993-96



Matt Caution
B.S. Wildlife
Conservation

Professional Soccer
Player

California Cougars

1993-97



Tom Giovanni
B.S. Economics

Salesman

Star Wholesale Supply

1987-89

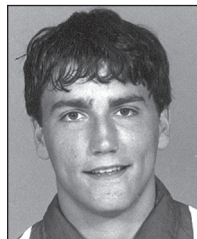


Brad Jordan
B.S. Physical
Education

High School Coach

Webster Groves H.S.

1994-97



Paul Jost
B.S. International
Business

Western Union
Denver, Colo.

1995-98

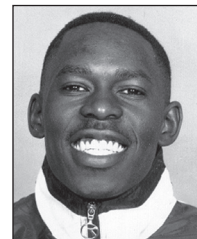


Robert Lundgren
B.S. Public Relations

Corporate Accounts

Univar U.S.A.

1984-86



Sevo Lwali
B.A. Anthropology

Campus Minister

Chi Alpha Campus
Ministries

1997-99

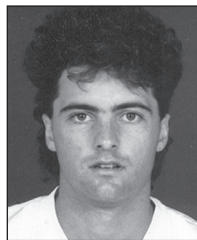


Mark Modersohn
B.S. Administrative
Management

Account Manager

Hilti North America

1997-00

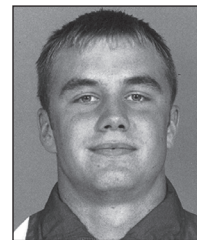


Evan Palmer
B.S. Physical
Education

High School Teacher/
Coach

Nixa High School

1986-89

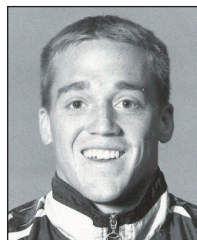


Wes Schulte
B.S. Marketing Sales

Associate Director of
Coaching

Ohio Elite Soccer
Academy

1994-96

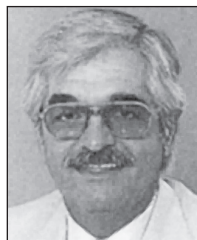


Mike Williams
B.S. Marketing

Investment Repre-
sentative

Edward Jones

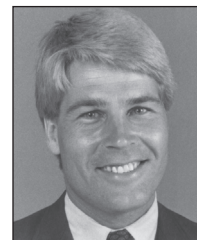
1997-00



Frank Dinka
Former Head Coach

Retired

1981-86

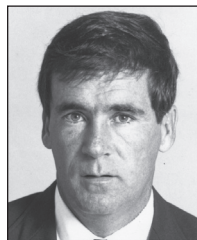


Jan Stahle
Former Head Coach

Branch Manager

Harry Cooper Supply
Company

1987-89



Tom Howe
Former Head Coach

Director of Coaching

Scott Gallagher
Soccer Club

1990-91

**Missouri State Athletics
on the World Wide Web**

www.missouristatebears.com