

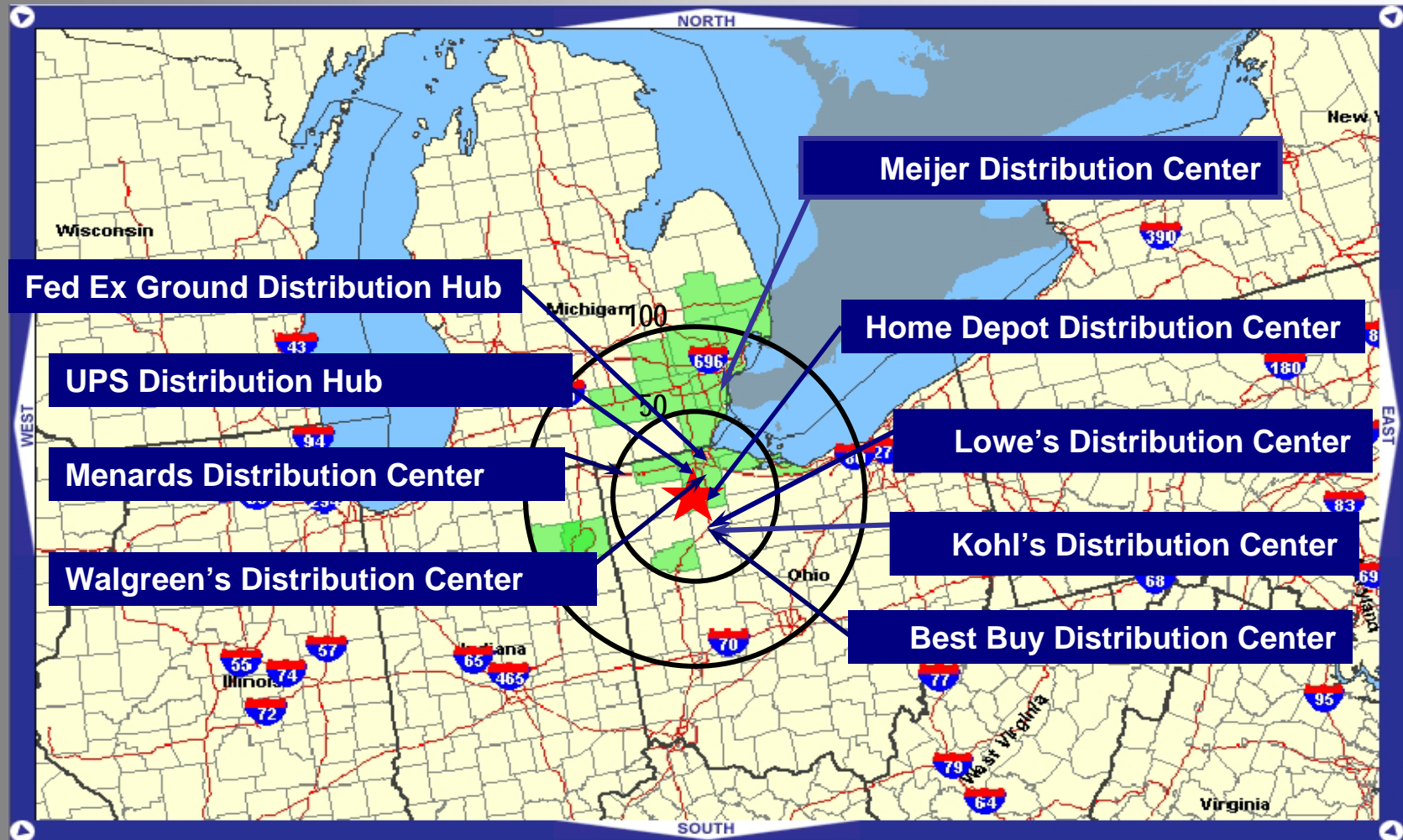
Northwest Ohio Intermodal Update

Our Region's Response to a Changing Economy

Warren Henry, P.E.
Vice President Transportation
TMACOG
May 6, 2010

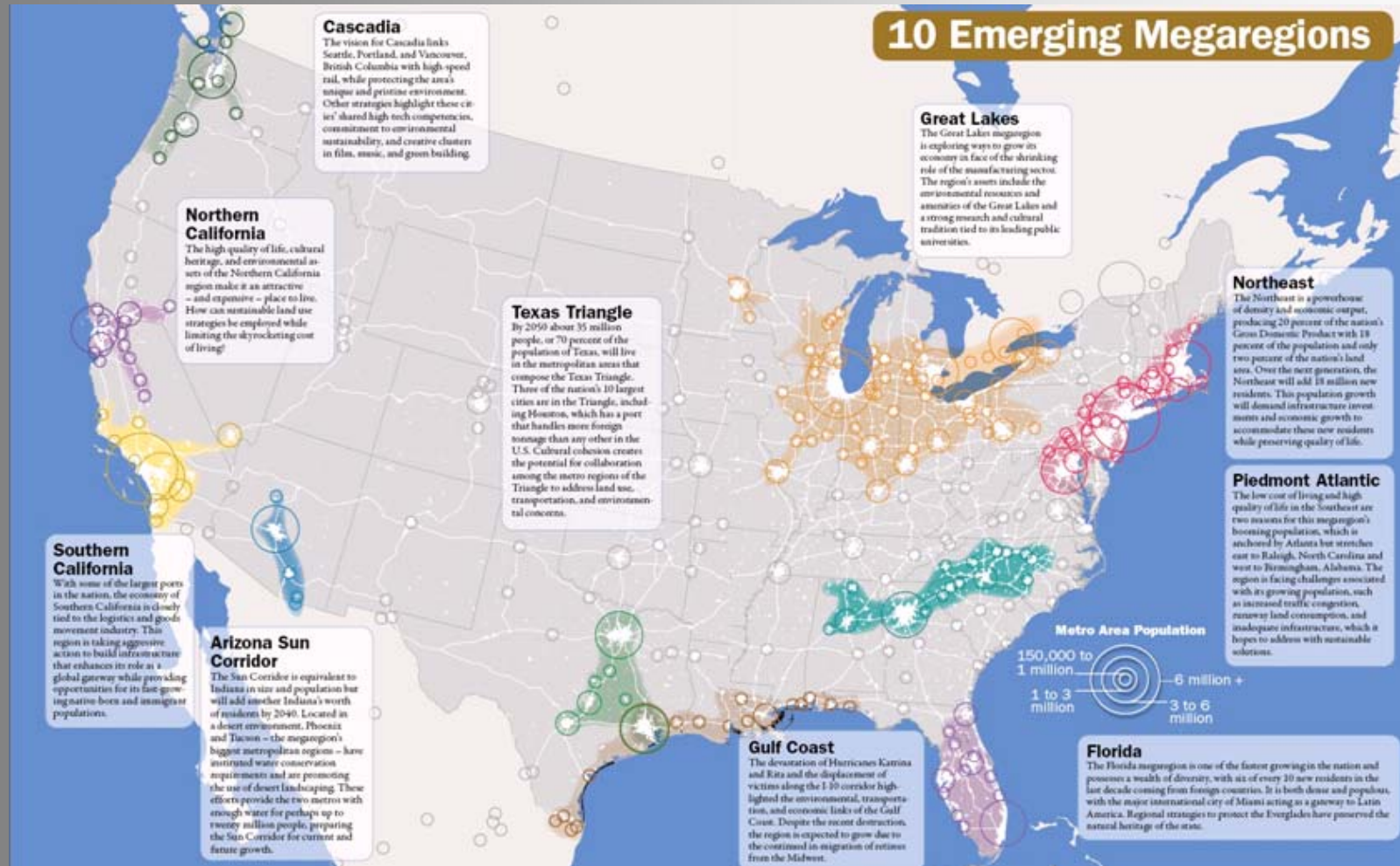


What's Going On?

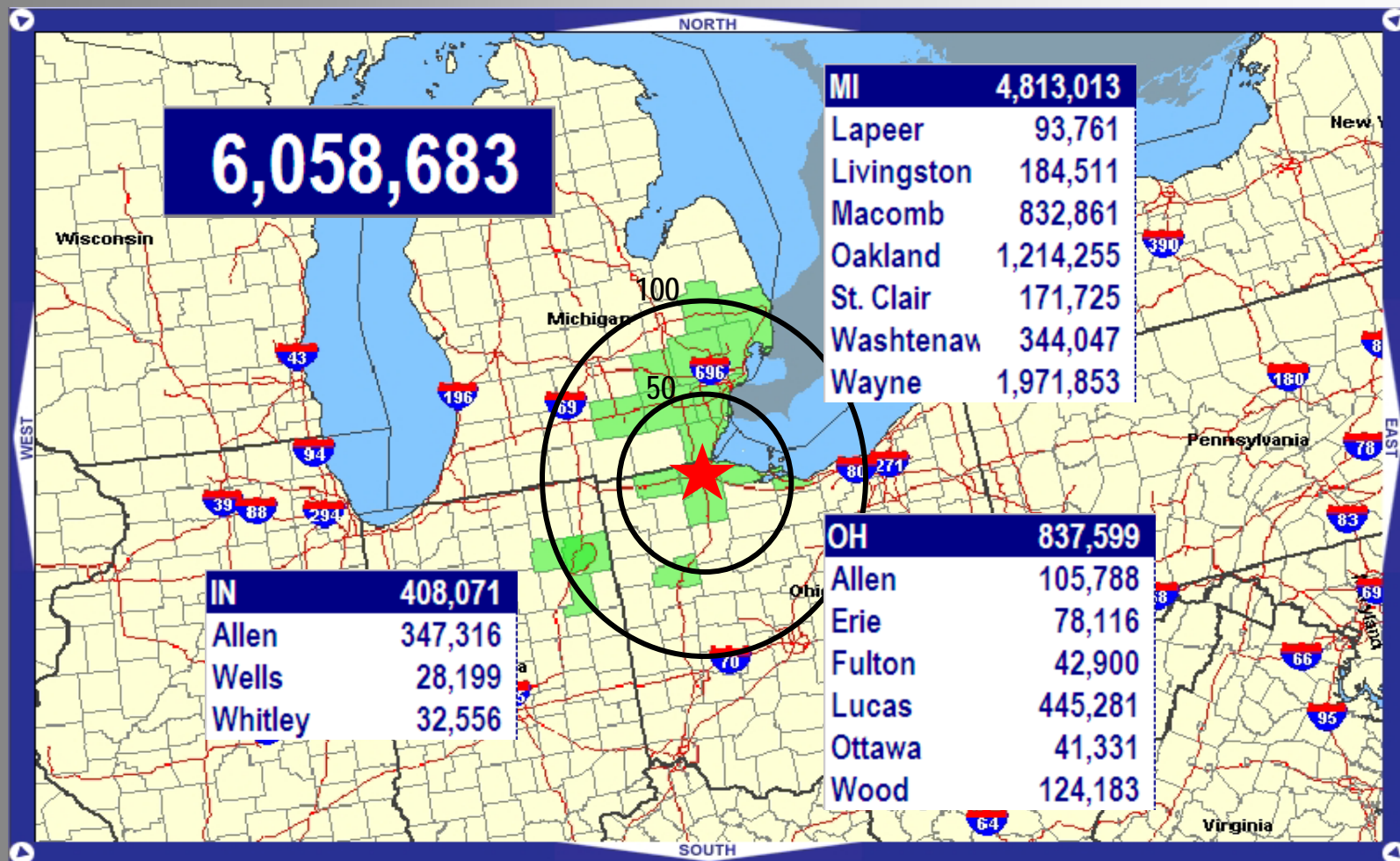


Source UT-ITI

Why Here?



MSA Capture - 2006 Population



Source: Bureau of Economic Analysis (BEA)
U.S. Census Bureau



MSA Capture - 2006 Population

State	Population 2006	Population Rank	State	Population 2006	Population Rank
CA	36,457,549	1	NJ	8,724,560	11
TX	23,507,783	2	VA	7,642,884	12
NY	19,306,183	3	MA	6,437,193	13
FL	18,089,888	4	WA	6,395,798	14
IL	12,831,970	5	IN	6,313,520	15
PA	12,440,621	6	AZ	6,166,318	16
OH	11,478,006	7	Lake Erie West	6,058,683	17
MI	10,095,643	8	TN	6,038,803	18
GA	9,363,941	9	MO	5,842,713	19
NC	8,856,505	10	MD	5,615,727	20

Source: Bureau of Economic Analysis (BEA)
U.S. Census Bureau

MSA Capture - 2005 GDP

Metropolitan Area	2005 gdp (millions of \$)	gdp rank
New York-Northern New Jersey-Long Island	\$1,056,381	1
Los Angeles-Long Beach-Santa Ana	\$632,407	2
Chicago-Naperville-Joliet	\$461,374	3
Washington-Arlington-Alexandria	\$347,631	4
Houston-Sugar Land-Baytown	\$316,332	5
Dallas-Fort Worth-Arlington	\$315,544	6
Philadelphia-Camden-Wilmington	\$295,236	7
Lake Erie West	\$271,772	8
San Francisco-Oakland-Fremont	\$268,300	9
Boston-Cambridge-Quincy	\$261,086	10

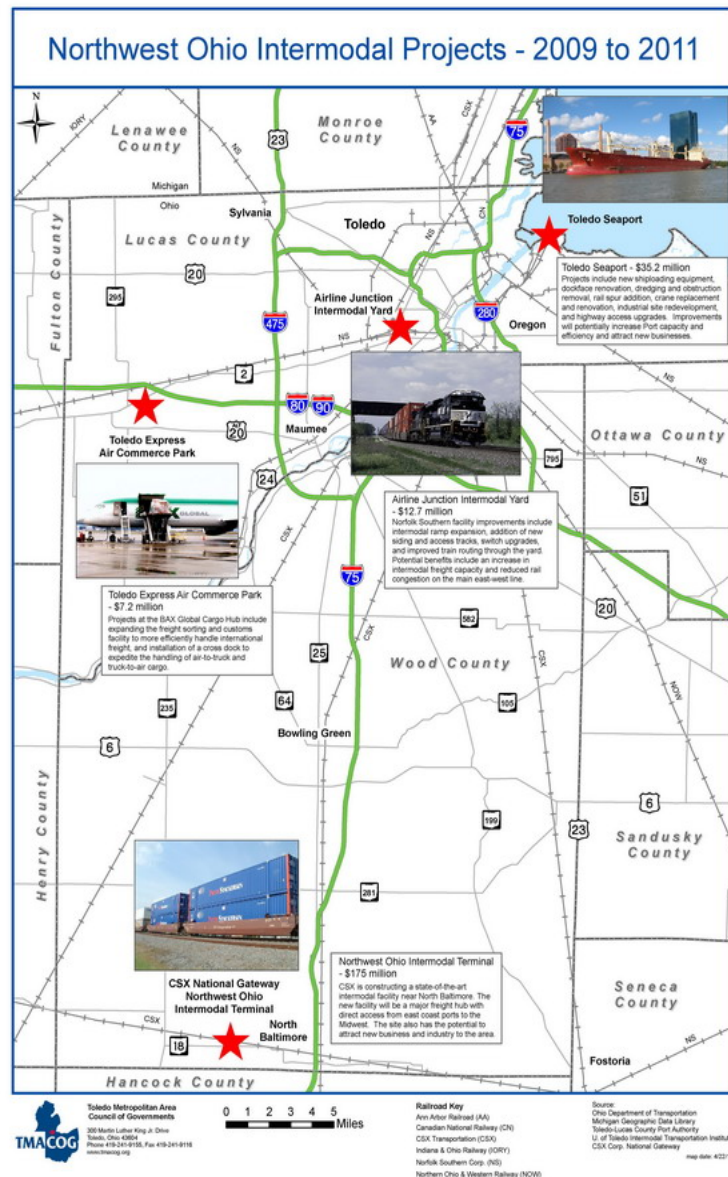
Metropolitan Area	2005 gdp (millions of \$)	gdp rank
Atlanta-Sandy Springs-Marietta	\$242,381	11
Miami-Fort Lauderdale-Pompano Beach	\$231,805	12
Seattle-Tacoma-Bellevue	\$182,170	13
Minneapolis-St Paul-Bloomington	\$171,361	14
Phoenix-Mesa-Scottsdale	\$160,028	15
San Diego-Carlsbad-San Marcos	\$146,341	16
Denver-Aurora	\$131,550	17
San Jose-Sunnyvale-Santa Clara	\$123,305	18
Baltimore-Towson	\$118,063	19
St Louis	\$116,215	20

Source: Bureau of Economic Analysis (BEA)
US Census Bureau

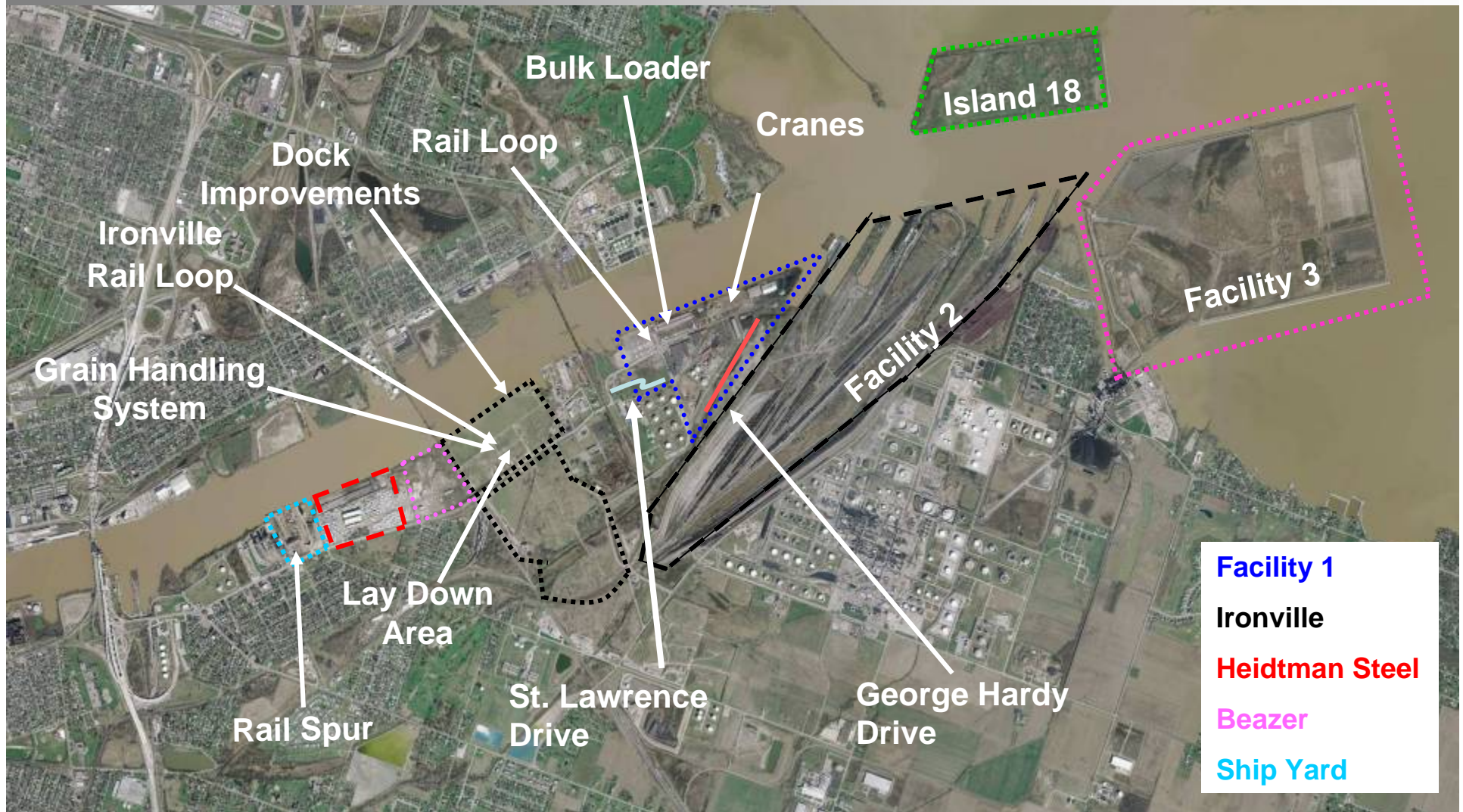


NW Ohio Intermodal Projects 2009-2011

- **Port Authority** **\$35.2 M**
– Ship/Rail/Truck
 - **Airline Yard** **\$12.8 M**
– Rail/Truck
 - **Toledo Express** **\$7.2 M**
– Air/Truck
 - **CSX Gateway** **\$175 M**
– Rail/Truck
- Total Intermodal Construction** **\$230.2 M**



Port Authority– Seaport Improvements



Port Authority – Ironville Terminal

- **Dry Bulk Ship Loading Conveyor**
 - TMACOG ARRA
Stimulus \$350,000



Source Toledo Lucas County Port Authority

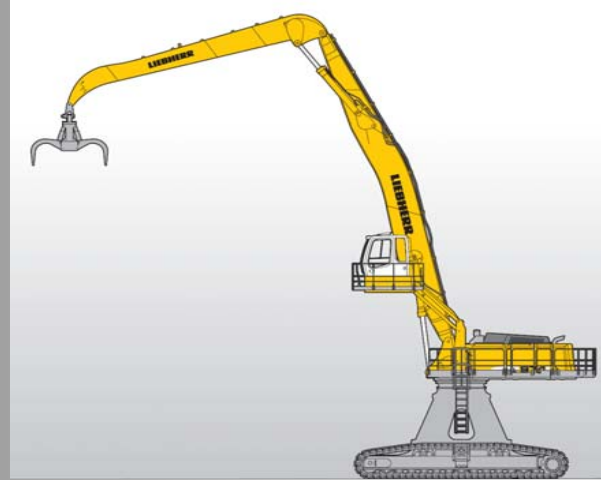
Port Authority — Ironville Terminal



- **Grain Transfer and Delivery System**
 - Ohio Logistics and Distribution \$7.5 Million
- **Dock face/Paving/Rail/Dredging/Obstruction Removal**
 - Ohio Job Ready Site Program \$5 Million

Source Toledo Lucas County Port Authority

Port Authority – General Cargo

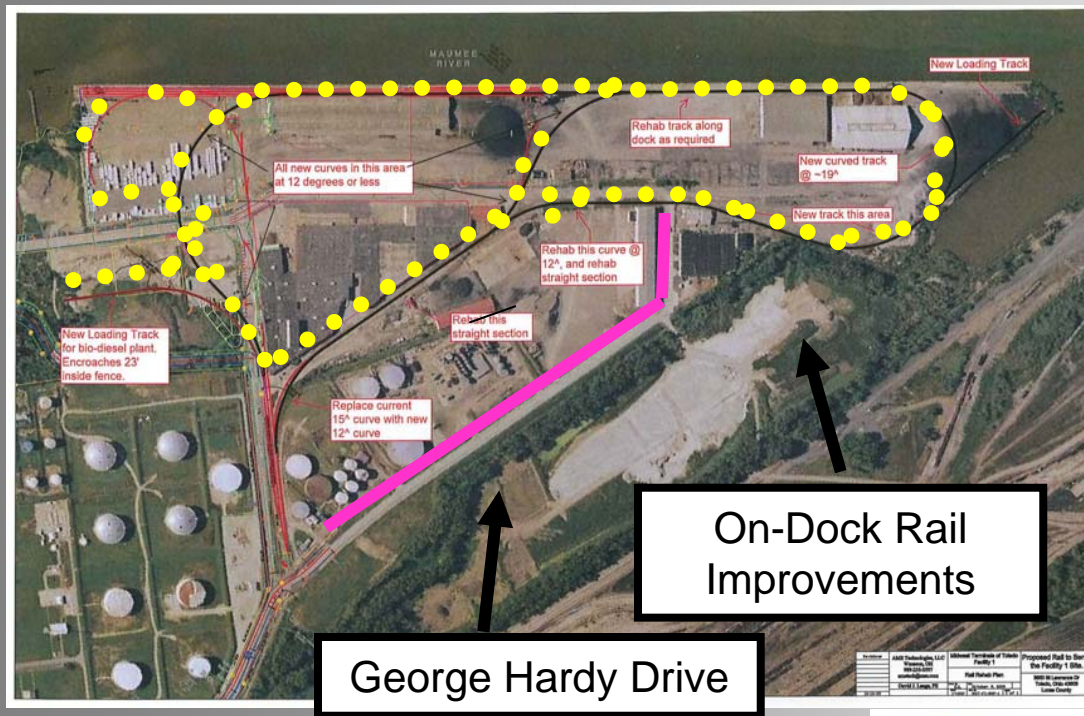


- **Replace 2 1940's era cranes with 2 mobile harbor cranes**
 - ARRA Stimulus Funding \$6.8 Million
- **Replace 1 1940's era crane with material handler**
 - ARRA Stimulus Funding \$4 Million
- **Replace Generator Set in Little Lucas Crane**
 - DERG Grant through OEPA \$73,492

Source Toledo Lucas County Port Authority

Port Authority – General Cargo

- Reconstruction of George Hardy Drive
 - TMACOG ARRA \$1.17 Million
- Repair and On-Dock Rail
 - ARRA Stimulus \$6.4 Million
- Reconstruction of St. Lawrence Drive
 - ARRA Stimulus \$4.2 Million



Source Toledo Lucas County Port Authority

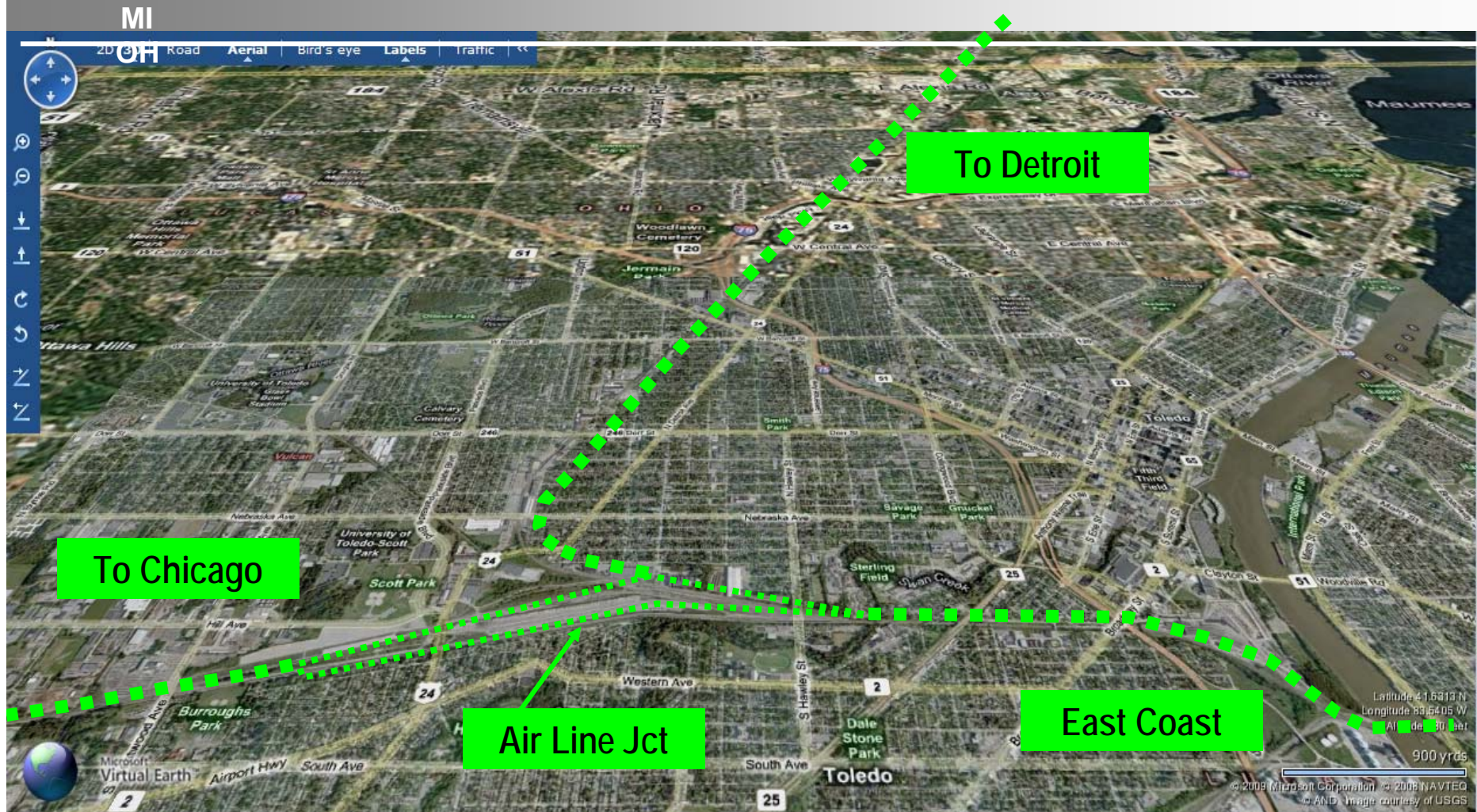
Port Authority – Beazer



- **Site Clean-Up and Redevelopment**
 - **CORF Grant \$2 Million**

Source Toledo Lucas County Port Authority

Air Line Junction Rail Yard



Source UT - ITI



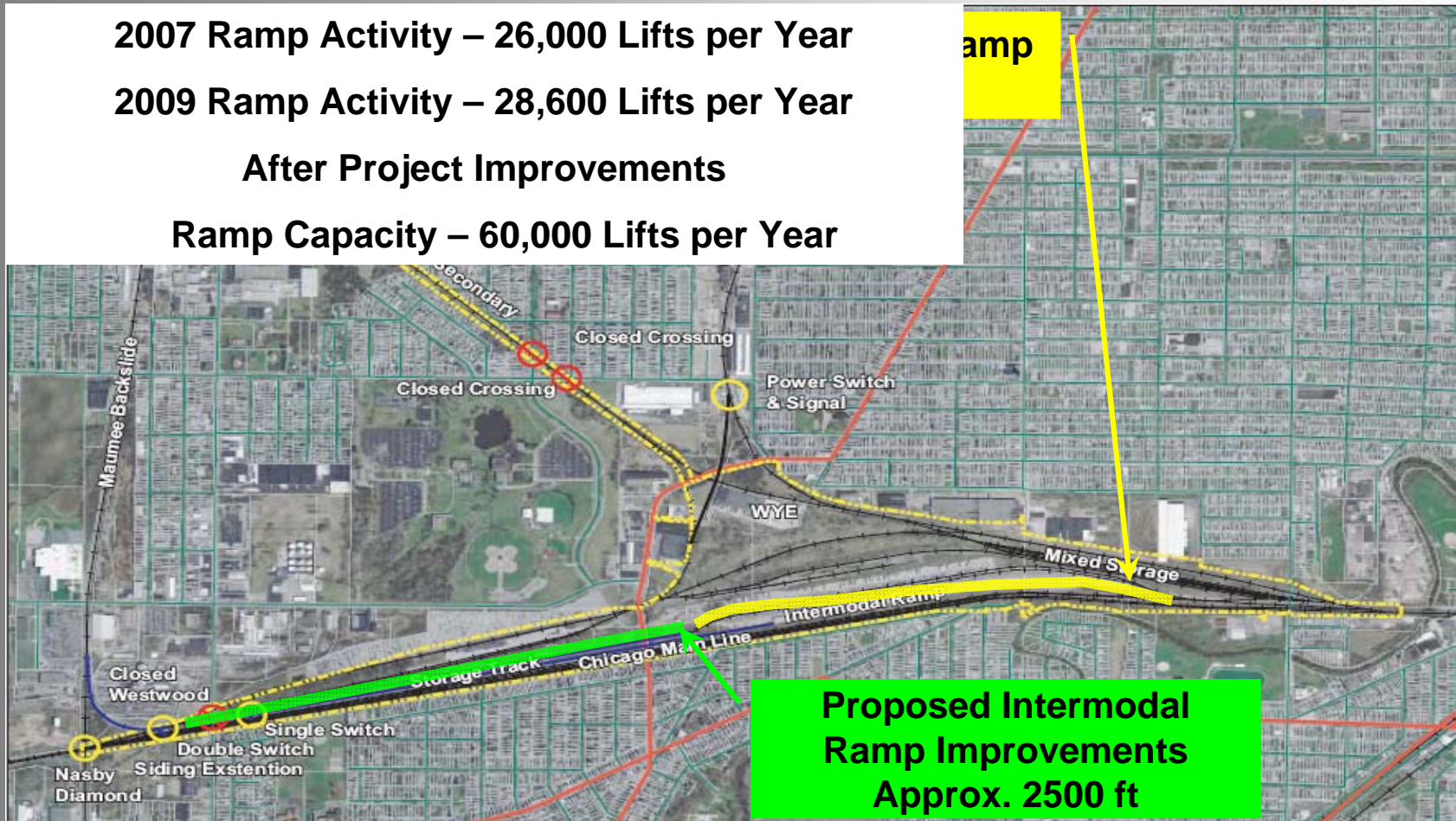
Air Line Junction Layout

2007 Ramp Activity – 26,000 Lifts per Year

2009 Ramp Activity – 28,600 Lifts per Year

After Project Improvements

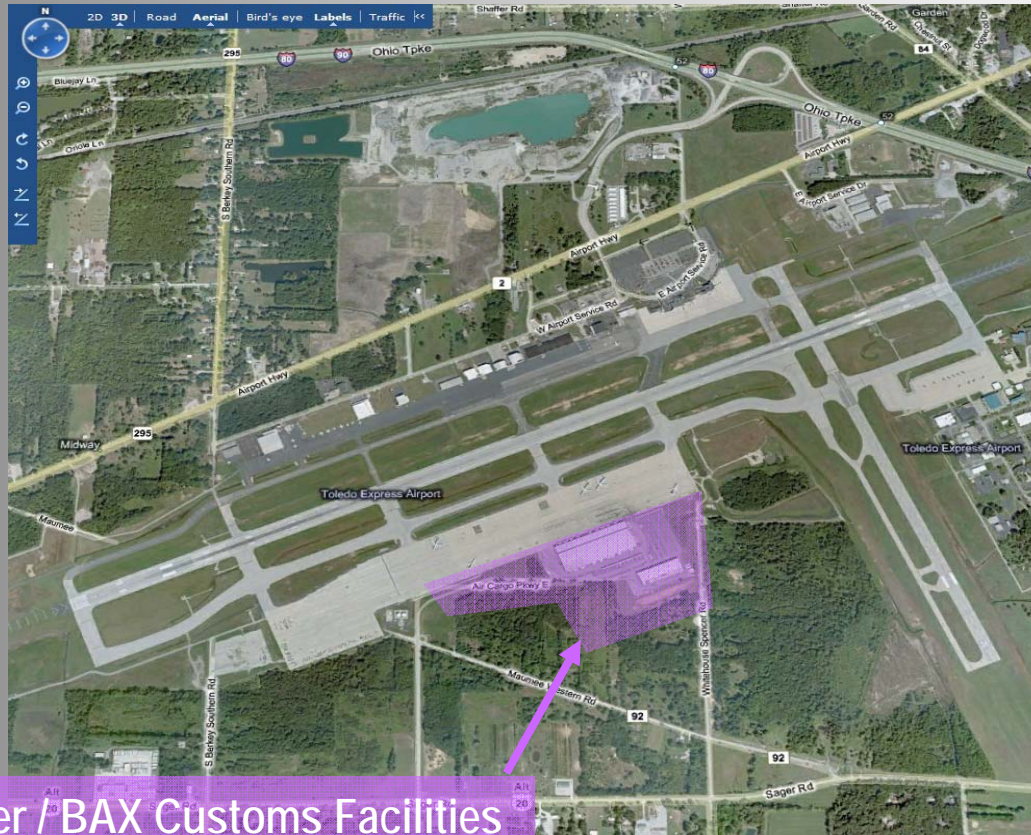
Ramp Capacity – 60,000 Lifts per Year



Source UT - ITI

Toledo Express Air Commerce

BAX / Schenker International Air Cargo



Schenker / BAX Customs Facilities

Source UT – ITI & Toledo Lucas County Port Authority

BAX/Schenker Highlights



- Only dedicated Heavy Freight air sorting complex in operation in North America
- 279,000 square feet
- 2.6 miles of conveyor sorting
- 78 acre ramp
- Employs 900+
- Annual volume 350 to 500 million pounds
- 4.0 million pounds of sorting capacity per day

Source Toledo Lucas County Port Authority

BAX/Schenker Expansion



20,000 SF US Customs Facility

- US Customs crew check in and clearance In-bound freight
- Customs quarantine area
- Express consignment storage area for Canada & Mexico freight

20 Bay Cross Dock Facility

- Add bulk load truck operations into sort facility

Relocation of International Freight Build-up and Break-down Facility

- International freight segregated from domestic freight

Source Toledo Lucas County Port Authority

CSX National Gateway North Baltimore

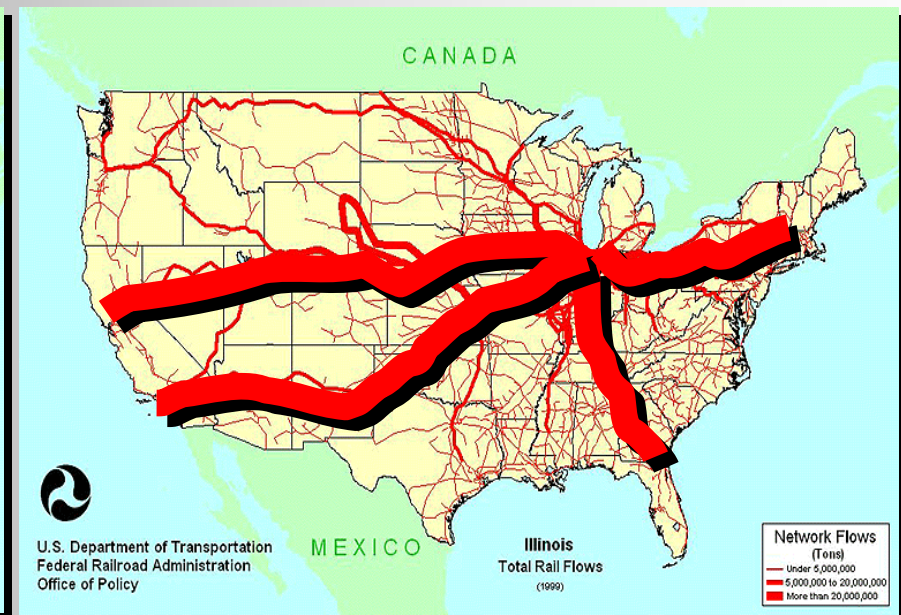


Future US Rail Traffic Flows

Today



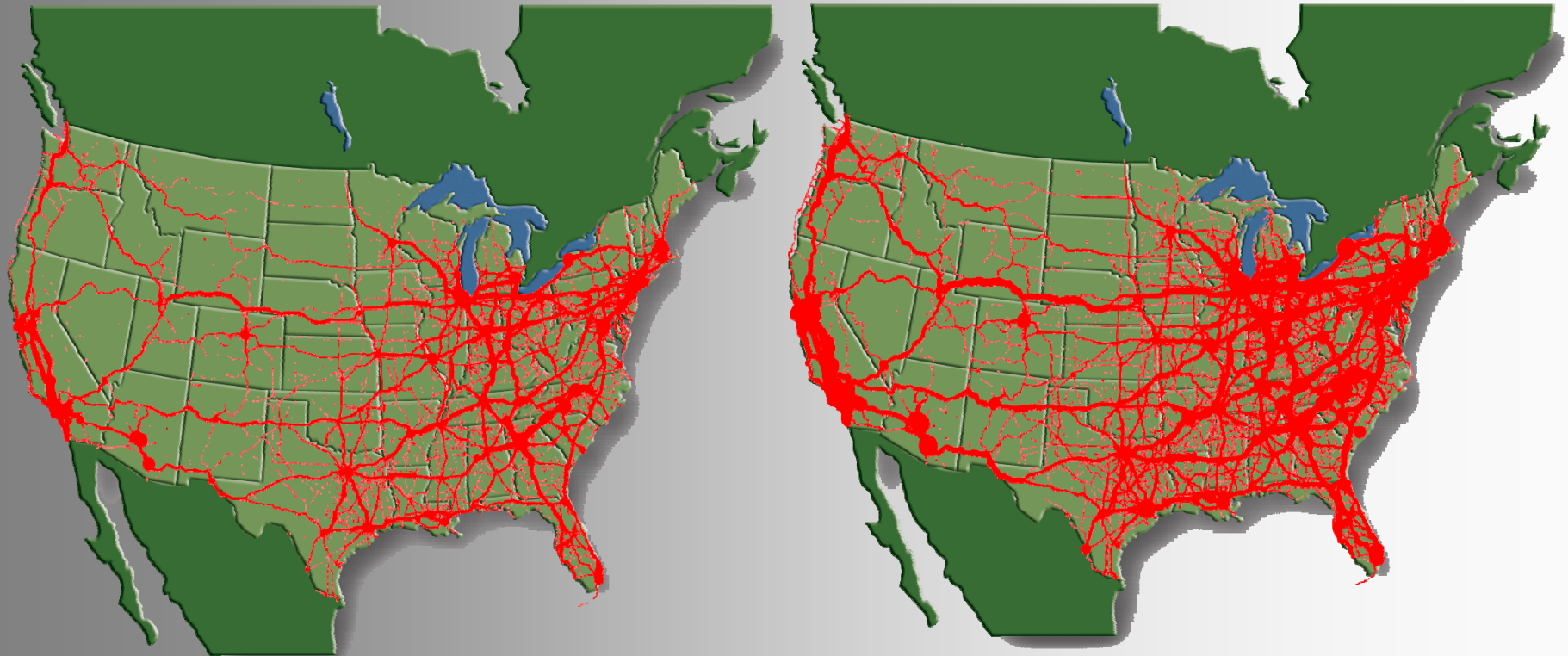
2020



Future US Truck Traffic Growth

Today

2020

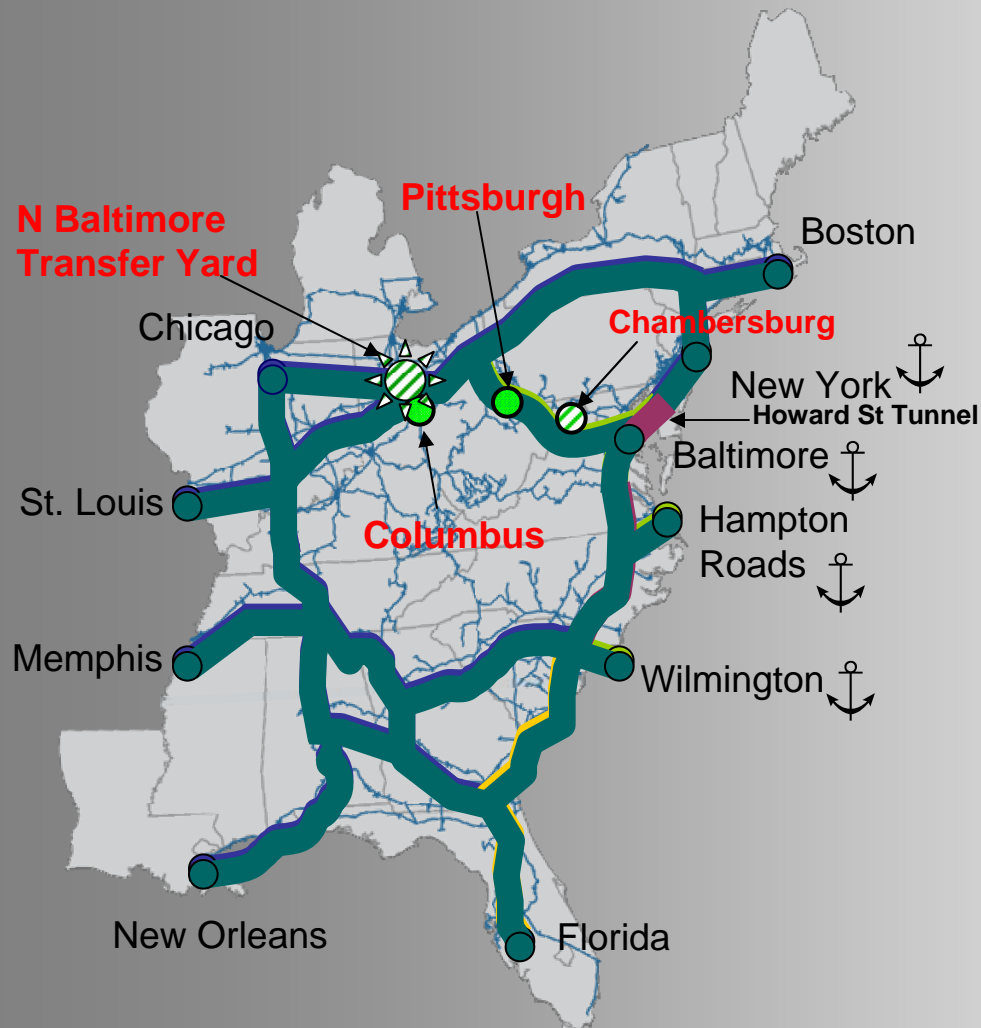


Truck Volume Scale



Source: USDOT FHWA Freight Analysis Framework

CSX National Gateway



Source CSX Transportation

Creates a double stack network along key corridors

Improves the flow of freight between the Mid-Atlantic and Midwest, as well as the nation

- 🟢 **N Baltimore Intermodal Yard**
- 🟢 **Planned Construction**

**N Baltimore Yard - \$175 Million
Complete 2011**

**Total National Gateway
Investment - \$842 million
Complete 2014**

N Baltimore Transfer Yard



**New CSX North
Division HQ**

**Direct Chicago run
though**

**500 to 600 thousand
lifts per year**

**30 plus container
trains per day**

Source CSX Transportation



N Baltimore Transfer Yard



18 Swap Tracks

**5 cranes ea 150 high
by 300 ft long**

**Semi automated
operation**

23 miles of track

SR 18

Source CSX Transportation



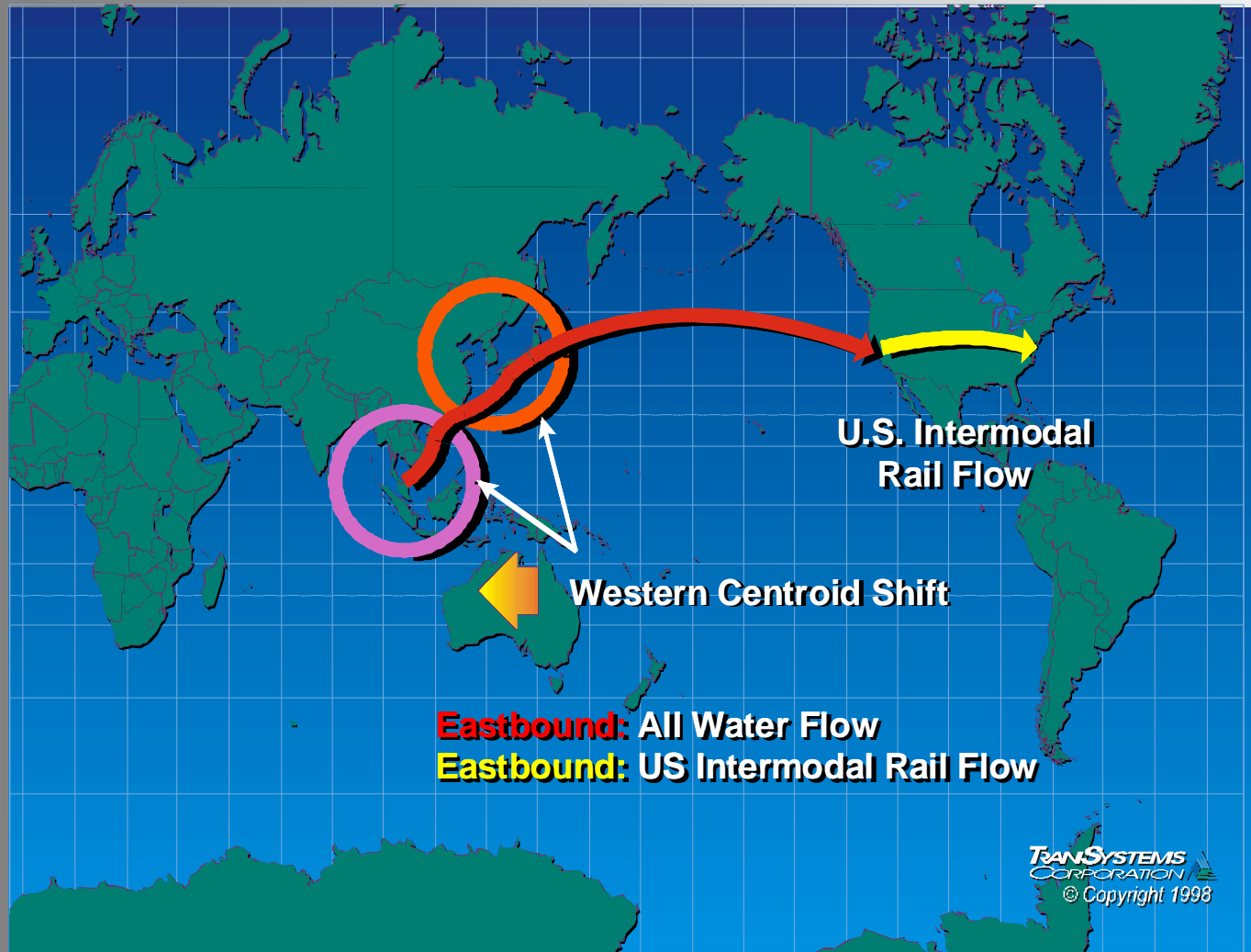
Future Game Changers



Source: [Source: Intel Corporation](#)

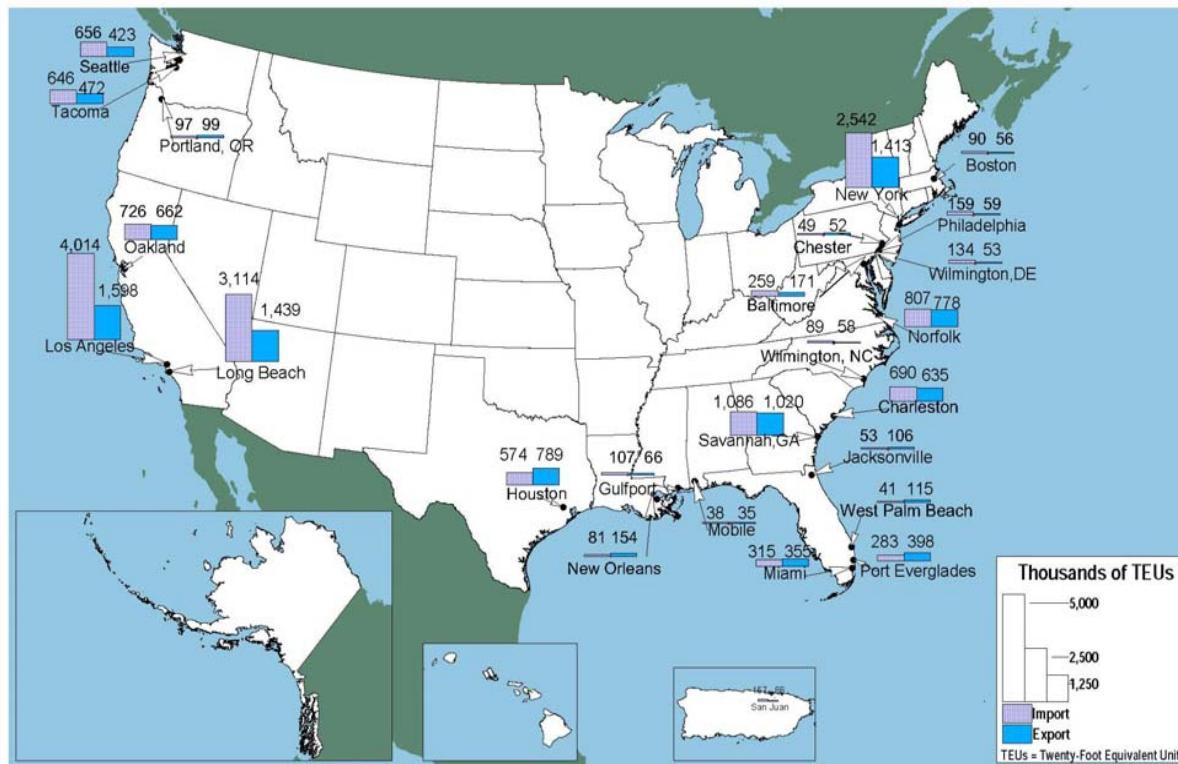


Southeast Asia Container Flow



Top 25 Container Ports - 2008

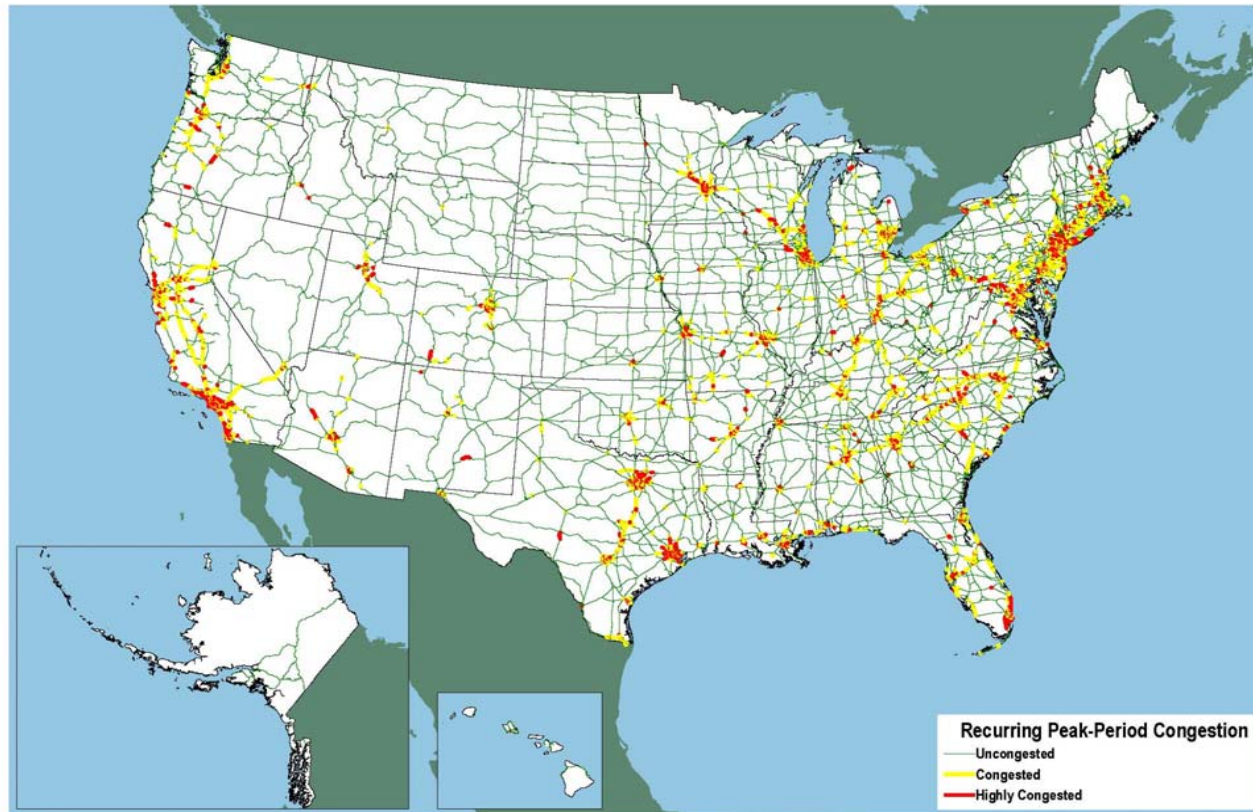
Top 25 Water Ports by Containerized Cargo: 2008



Source: U.S. Department of Transportation, Maritime Administration, U.S. Waterborne Container Trade by U.S. Custom Ports, 1997-2008, based on data provided by Port Import/Export Reporting Service, available at www.marad.dot.gov/library_landing_page/data_and_statistics/Data_and_Statistics.htm as of June 12, 2009.

2002 Peak Period Congestion

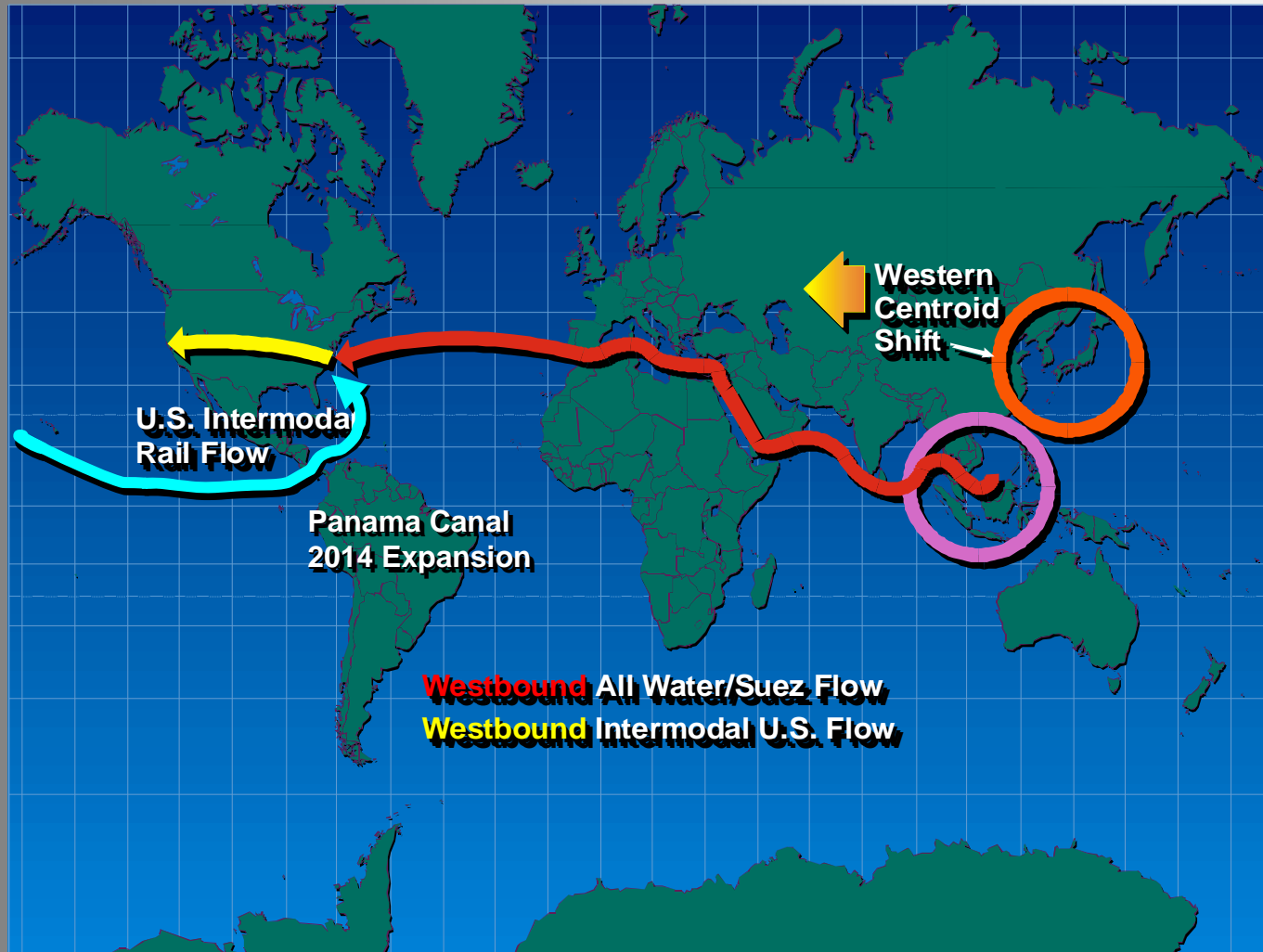
Peak-Period Congestion on the National Highway System: 2002



Note: Highly congested segments are stop-and-go conditions with volume/service flow ratios greater than 0.95. Congested segments have reduced traffic speeds with volume/service flow ratios between 0.75 and 0.95.

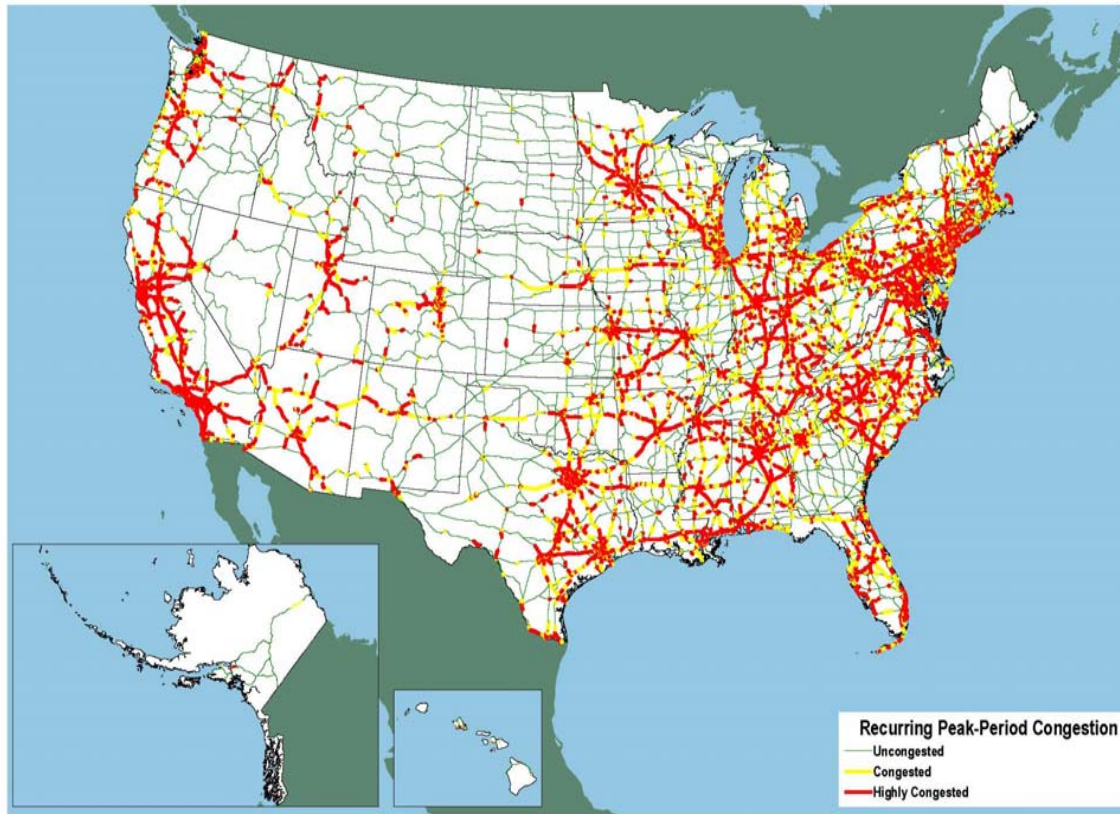
Source: U. S. Department of Transportation, Federal Highway Administration, Office of Highway Policy Information, Highway Performance Monitoring System, and Office of Freight Management and Operations, Freight Analysis Framework, version 2.2, 2007

Southeast Asia Shift



2035 Peak Period Congestion

Peak-Period Congestion on the National Highway System: 2035



Note: Highly congested segments are stop-and-go conditions with volume/service flow ratios greater than 0.95. Congested segments have reduced traffic speeds with volume/service flow ratios between 0.75 and 0.95.
Source: U. S. Department of Transportation, Federal Highway Administration, Office of Highway Policy Information, Highway Performance Monitoring System, and Office of Freight Management and Operations, Freight Analysis Framework, version 2.2, 2007

2035 Truck Volume

Major Truck Routes on the National Highway System: 2035

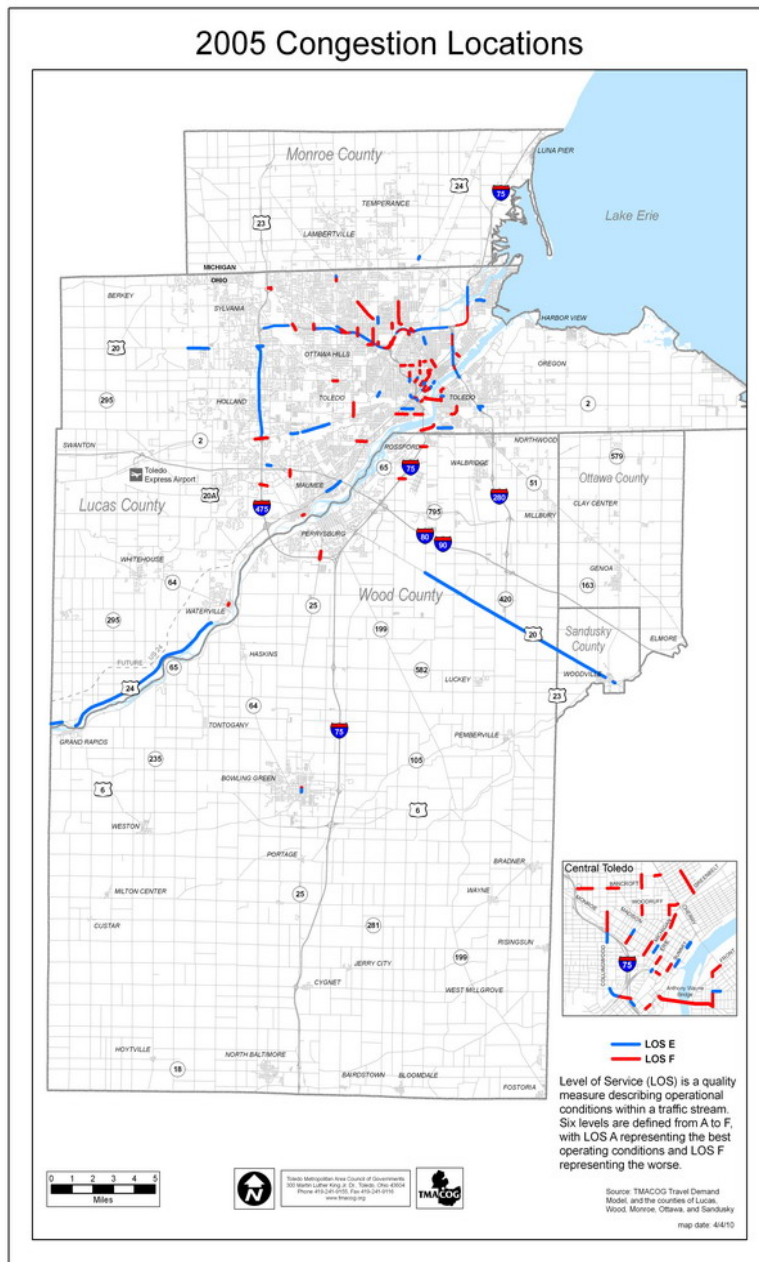


Note: AADTT is average annual daily truck traffic and includes all freight-hauling and other trucks with six or more tires. AADT is average annual daily traffic and includes all motor vehicles.

Source: U.S. Department of Transportation, Federal Highway Administration, Office of Freight Management and Operations, Freight Analysis Framework, version 2.2, 2007.

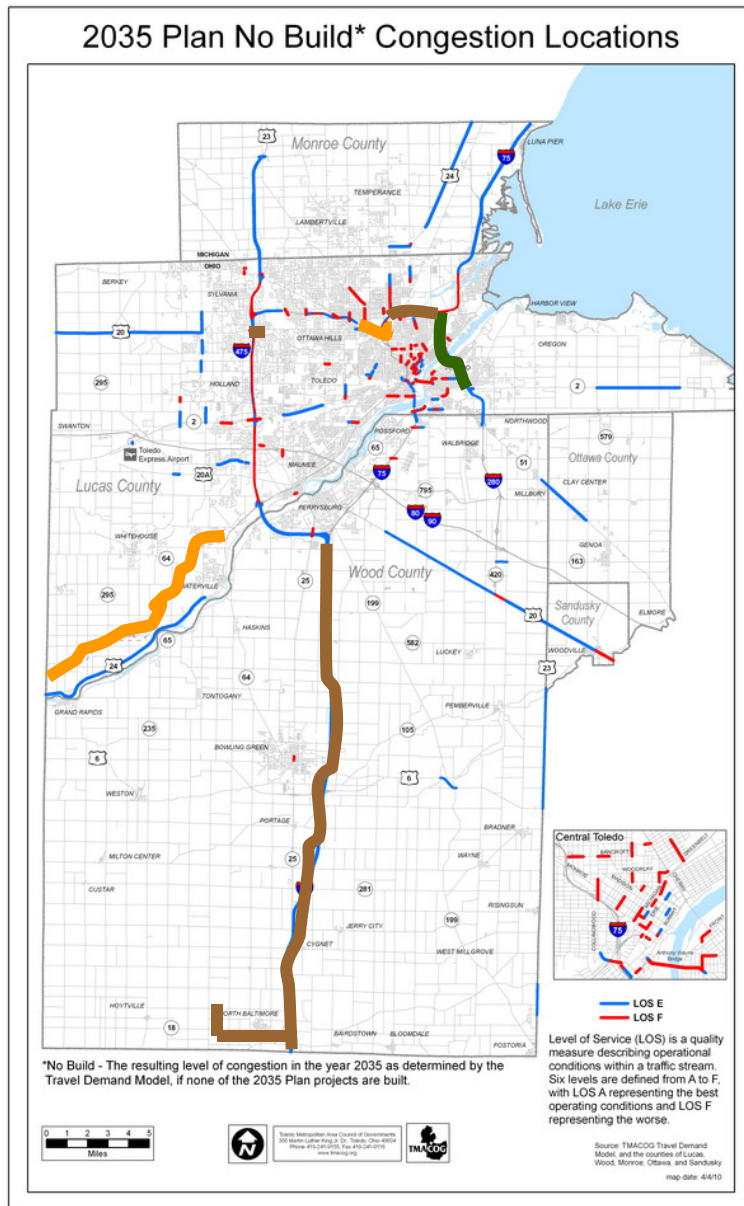
NW Ohio 2005 Congestion

- **Arterials**
 - Urban freeway interchanges
- **Freeways**
 - I-75 North Toledo
 - I-280 North Toledo
 - Northerly portions of I-475
- **US and SR Routes**
 - US 24
 - US 20
 - SR 2 Airport Hwy (Toledo)



Past, Present, and Planned Projects

- **Past \$237 M**
 - **Veterans' Glass City Skyway 2007**
- **Present \$400 M**
 - **US 24 Fort to Port 2012**
 - **I-75/475 Interchange 2012**
- **Planned (TRAC Tier 2)**
 - **I-75 N Toledo**
 - **US 20 & I-475 (Central)**
 - **I-75 Perrysburg to Findlay**
 - **SR 18 Relocation**



Northwest Ohio Intermodal

Our Region's Response to a Changing Economy

Questions & Answers

2035 Planning Survey