

# 2009 Distinguished Project Awards







National • Inspection • Testing • Certification



National Inspection Testing and Certification  
Celebrates the

2009

WCCC Distinguished Project Awards

We are proud sponsors of your annual Distinguished Project Awards.

NITC is committed to providing high quality, efficient certification services to the plumbing and piping Industry.

NITC tests and certifies personnel in the Plumbing, Piping, HVACR and related industries. NITC is ISO 9001:2000 certified and is an ANSI accredited Certifier-Accreditation Number 0645.



NITC  
501 Shatto Place, # 201  
Los Angeles, CA 90020  
(877) 457-6482

[www.nationalitc.com](http://www.nationalitc.com)

FTR International Inc. – Photography by Greg Epstein



**SCHOOLS**

**LA Community College District — Allied Health and Science Center**

This is a signature facility representing the transformation of Los Angeles Valley College to an institution of higher learning with exceptional facilities. The facility was designed by an award-winning firm, CO Architects and completed as a LEED Gold rated facility- one of a handful in Los Angeles. The facility houses programs for the College that represent approximately one-third of all students on campus and physically anchors the campus educational hub for the science programs at the South end of Campus.

The project incorporates many technical features introduced to the campus, students and faculty for the first time, including teaching gardens, advanced audio-visual systems and smart classrooms, state-of-the-art laboratory spaces and much more. The project was completed within the contingency levels set aside of less than 10% above initial contract award. The Project incorporates most of the newly adopted LACCD design and product standards such as recycled, sustainable materials, systems and fixtures.

<b>Cost</b> \$50,390,000	<b>Owner</b> L.A. Valley College
<b>Start date</b> April 2006	<b>Contractor</b> FTR International Inc.
<b>Completion date</b> September 2008	<b>Architect</b> CO Architect

**City of Pinole — Prune Street Pedestrian Bridge Replacement**



**TRANSPORTATION**

In the early 1960's the City of Pinole arranged for a pedestrian bridge to be installed across Pinole Creek in the area of Prune Street. In 2004 the original bridge structure was deemed structurally unsound and closed to use. Over the years, the bridge had become a crucial link in the City's transportation infrastructure by reducing the walking time and allowing pedestrians and bicyclists a more scenic route off the busy traveled way. The City decided to reopen the bridge as rapidly as possible.

In the construction industry large projects tend to draw the attention of both those in the industry and the general public. Small projects can have the same type of problems that big projects have: over budget and behind schedule. When they do have these same problems, little projects also get a lot of attention.

This project was completed with a perfect safety record, within budget, and on schedule.

<b>Cost</b> \$402,500
<b>Start date</b> June 2007
<b>Completion date</b> December 2007
<b>Owner</b> City of Pinole
<b>Contractor</b> Berkeley Engineering
<b>Project Manager</b> Wildan Engineering





**PROCESS/MANUFACTURING**

## **Chevron — LSFO Flare Gas Recovery Project, El Segundo**

The project involves the installation of three new reciprocating compressor trains and support infrastructure (knock-out vessels, pumps, cooling towers, substations, instrumentations and control systems, etc) to recover LSFO and Coker relief gas. The project was completed with excellent safety and productivity performance ahead of the aggressive schedule and 10% under budget. Mustang performed the Construction Management and utilized Chevron El Segundo Refinery approved (MSA) Contractors to execute the work.

The Project had to be executed utilizing a “FAST TRACK” execution approach to meet the environmental compliance dates. None of the companies involved had ever worked together before this project; this required lots of team building in a short amount of time to achieve the cohesive team. Strong leadership was provided by the owner’s Project Manager throughout the project. The project’s vendors were experiencing an all time high business cycle due to world demand for commodities and equipment during the life of the project.

This project was completed with a perfect safety record, within budget, and on schedule.

**Cost**  
\$75,000,000

**Start date**  
October 2007

**Completion date**  
October 2008

**Owner**  
Chevron Products Company

**Contractor**  
Brinderson Constructors

**Designer**  
Mustang Engineers and Constructors, L.P.



*Constructing lasting client relationships  
and superior projects from start to finish.*

**Proud to be part of the  
award winning CM team**

• • •

**Allied Health  
& Science Center  
Los Angeles Valley College**

23632 Calabasas Road, #105 • Calabasas, CA 91302  
T. (818) 591-8555 • F. (818) 591-8556  
E. info@beezleymanagement.com  
www.beezleymanagement.com

**Santa Clara River Valley Health and Hospital System — Valley Health Center, Gilroy**



**GENERAL BUILDING**

The facility was designed to meet the County of Santa Clara’s Green Building Policy and PG&E Saving by Design guidelines. The quality control process for this project began in the design phase with a collaborative pre-construction process and project team. The collaboration between the County of Santa Clara (County), Anshen+Allen, and URS started with detailed constructability and biddability reviews and reconciled independent cost estimates. It continued through the construction phase with collaborative problem solving, teamwork and a thorough Contractor Quality Control (CQC) Program, modeled after the Federal Army Corp of Engineers and Navy Facilities program.

This project was completed with a perfect safety record, within budget, and on schedule.

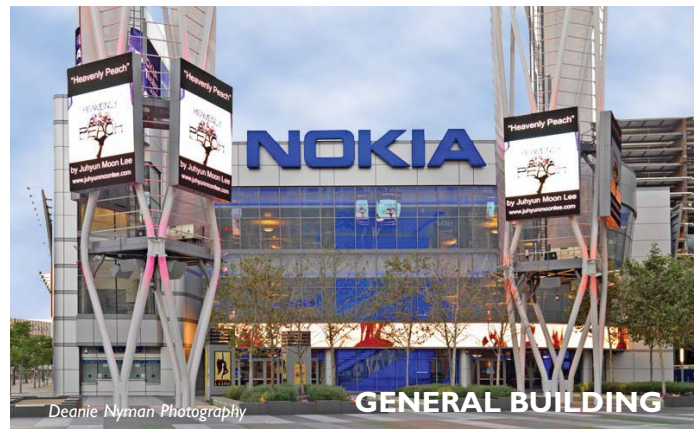
<b>Cost</b> \$35,691,790	<b>Owner</b> County of Santa Clara
<b>Start date</b> April 2006	<b>Contractor</b> URS Corporation
<b>Completion date</b> October 2008	<b>Designer</b> Anshen+Allen Architects

**Anchutz Entertainment Group — Nokia Theater, Los Angeles**

Nokia Theater is the architectural and cultural anchor for L.A. Live, a 5.6 million square-foot entertainment, retail and commercial complex that is redefining downtown Los Angeles. The city’s largest development since the Los Angeles Convention Center, L.A. Live’s master plan is an extraordinary vision to transform the downtown area into a vibrant and cosmopolitan community. The 7,100-seat Nokia Theater is one of L.A. Live’s main attractions, drawing live music concerts, cultural events and glamorous industry award shows, including the American Music Awards and the Primetime Emmy Awards.

The theater’s striking glass and metal panel exterior serves as design inspiration for all of L.A. Live. The project’s significance was captured by Los Angeles Mayor Antonio Villaraigosa, “Without a doubt, Nokia Theater . . . is the cherry on top of the major successes we’re witnessing in downtown.” The Clark Construction Group-California, LP project team battled weather delays and myriad of sequencing challenges. The project team maintained an expedited schedule and overcame complicated site logistics, however, to deliver this exceptional project on time and on budget.

Less than one week after receiving the Temporary Certificate of Occupancy, the Eagles and Dixie Chicks christened the new performing arts venue with a string of six consecutive sold-out concerts.



**GENERAL BUILDING**

<b>Cost</b> \$93,000,000	<b>Owner</b> Anchutz Entertainment Group
<b>Start date</b> November 2005	<b>Contractor</b> Clark Construction Group
<b>Completion date</b> December 2007	<b>Designer</b> ELS Architecture and Urban Planning



## Exceptional Project Awards

### SCHOOLS



#### Solano Community College District — Vallejo Center

The Vallejo Center is part of a \$124.5 million, six-year, local bond program that includes the construction and program management of multiple facilities. The contractor developed a tri-fold brochure for the accreditation team and others, along with regular reports keeping all concerned groups up to date on the progress of the program.

The Vallejo Center project was designed to be an “educational hub” for the community for higher education. This multidisciplinary building is designed for the community and future partnerships with the public and private academic institutions and local business. The design optimizes views of the rolling hills, which are unique to the site, and enhances the environment through the use of bioswales and integrated interior/exterior spaces for learning and interaction.

This project was completed with a perfect safety record, within budget, and ahead of schedule.

**Cost**

\$22,000,000

**Owner**

Solano Community College District

**Start date**

April 2006

**Contractor**

Kitchell CEM, Inc.

**Completion date**

October 2007

**Designer**

Kaplan, McGlauglin & Diaz (KMD)

### TRANSPORTATION



#### Caltrans District 12 — Upper Ortega Highway Widening

Route 74, Ortega Highway, from the east end of San Juan Creek Bridge (KP 21.4 or PM 13.3) to the Riverside County line (KP 26.7 or PM 16.6). Innovation during construction was required due to the complex stratigraphy, diverse topography, fault-zones, deep slopes, and environmentally sensitive areas as the project is entirely within the Santa Ana Mountains and Cleveland National Forest Further highlighted by the additional challenges of rockfall occurring throughout project, high fire danger area, no cell phone coverage and traffic volume at about 10,000 to 12,000 vehicles/day.

These innovations that required both contractor and Caltrans involvement contributed to the project being completed 2/3 of the original contract time, within budget and with no notice of potential claims to date.

**Cost**

\$40,000,000

**Owner**

Caltrans

**Start date**

January 2007

**Contractor**

Brent Engineering

**Completion date**

December 2008

**Designer**

Caltrans

### PUBLIC FACILITIES



#### Fountain Valley Recreation Center Expansion

The Fountain Valley Recreation Center originally consisted of a 55-acre facility located within the County of Orange Mile Square Park. The expansion of the facility became possible when the County offered to give the remaining portion of a World War II era military airfield to the City of Fountain Valley.

The City of Fountain Valley spent a great deal of public funds in the development and production of the original design for this project. This sports facility benefits both the people of Fountain Valley, and residents from all over Orange County — with a long awaited regional sports facilities that will provide the public with ample playing fields and recreational programs.

This project was completed with a perfect safety record, within budget, and on schedule.

**Cost**

\$17,000,000

**Owner**

City of Fountain Valley

**Start date**

June 2007

**Contractor**

Wildan Engineering

**Completion date**

October 2008

### GENERAL BUILDING



#### Citizens Business Bank Arena, Ontario

The Citizens Business Bank Arena was constructed on 37-acres of land in Ontario, California, near Interstate 10. The arena serves as home to the Ontario Reign ice hockey team. The arena also hosts other sporting, concert and other live performances. The arena is an 11,000-seat entertainment complex and has 36 luxury suites, refreshment stands, merchandise kiosks and 7,000 sq. ft. of locker room and storage space.

This was a tight construction schedule with a firm deadline of October 2008. Event tickets were being sold and there was no room in the schedule for delays. The project was completed in 18 months and was ready for the grand opening events.

This project was completed with a perfect safety record, within budget, and ahead of schedule.

**Cost**

\$126,000,000

**Owner**

City of Ontario

**Start date**

N/A

**Contractor**

Turner Construction Company

**Completion date**

October 2008

**Designer**

Rosetti

## GENERAL BUILDING

### The Lodge at Four Seasons

This project was to design and construct a 19,000 square-foot, single-story, wood frame clubhouse with swimming pool, gym, banquet facilities and gathering areas. The Lodge is used for exercise, activities, and events and serves the surrounding master community.

## GENERAL BUILDING

### Prestige Senior Living at Manteca

The two-story senior living facility has a total of 114 units including 90 assisted living apartments and 24 secure apartments for residents who require memory care and support. The community amenities include a large formal dining room with restaurant-style setting, as well as a private dining room that residents can use for family gatherings. The community also features an exercise room, a health and wellness spa with a Jacuzzi and massage area, library, beauty salon, and state-of-the-art theater room.

## TRANSPORTATION

### Reconstruction of Garvey Avenue Bridge

The Garvey Avenue Bridge over Rio Hondo Channel was removed and reconstructed; the bridge was widened from 52 feet to 100 feet wide to accommodate a striped median, four travel lanes, and shoulder and sidewalk on both sides. The project improved traffic and pedestrian safety and provided congestion relief on Garvey Avenue. The project also involved improvements to the Rio Hondo Channel, including a channel invert, maintenance road, bike path, and equestrian trail.

## INDUSTRIAL PROCESS/MANUFACTURING

### ConocoPhillips Wet Gas Scrubber Project

In 2003, California's South Coast Air Quality Management District (SCAQMD) adopted new rules regulating particulate and ammonia emissions from fluid catalytic cracking (FCC) units. The new rules

mandate that emissions be reduced to less than one-third of the most stringent federal levels, once again placing Southern California at the cutting edge of environmental control technology.

## PUBLIC FACILITIES

### Quincy Courthouse Renovation

This project was a renovation of a courtroom, approximately 1,600 square feet, in the historic courthouse building in Quincy. Also installed were flooring, new lighting, upgraded HVAC units and ADA access, created office space and judge's chambers, and new court bench. This project was completed with a perfect safety record, within budget, and on schedule.

## PUBLIC FACILITIES

### Redwood Shores Community Library

Kitchell provided construction management services during pre-construction through closeout for the construction of a new, single-story, \$14.5 million, 22,000 square foot library that includes multi-purpose rooms, a technology center, children's media area, family space, story telling room, teen space, study and conference rooms, library café, catering preparation room, staff break room, and staff and public restrooms.

## PUBLIC FACILITIES

### California State Polytechnic University, Pomona Library Addition

The California State Polytechnic University Library Addition included a 103,926 gross square feet expansion; a remodel of the existing ground floor consisting of 23,830 gross square feet; a renovation of the second and third floors, approximately 74,000 gross square feet, and improvements of the overall site and landscape areas. The addition provided needed lecture, instructional and office space and a 120-seat amphitheater. All classrooms integrated new data and telecommunication infrastructure to support future information technology systems.

## 2009 Board of Directors

### Bob Roessel, Chairman

SRP  
Manager, System Design, E&CS  
PO Box 52025, MS XCT315  
Phoenix, AZ 85072  
Tel: (602) 236-8648  
Fax: (602) 236-5905  
Email: bob.roessel@srpnet.com

### Lee Willoughby, Vice Chair

Judicial Council of California  
Asst. Dir. For Design/Construction  
2880 Gateway Oaks Drive, Ste 300  
Sacramento, CA 95833  
Tel: (916) 263-1493  
Fax: (916) 263-1329  
Email: lee.willoughby@jud.ca.gov

### Guy Mehula, Treasurer

Los Angeles Unified School District  
333 South Beaudry Ave, 23rd Floor  
Los Angeles, CA 90017  
Tel: (213) 241-4811  
Fax: (213) 241-8384  
Email: guy.mehula@lausd.net

### Glenn Singley, Past Chair

LADWP  
Dir., Water Eng. & Tech. Svcs.  
PO Box 51111, Room 1336-B  
Los Angeles, CA 90051-0100  
Tel: (213) 367-0866  
Fax: (213) 367-3775  
Email: glenn.singley@ladwp.com

### Mark Stapke, Legal Counsel

Michelman & Robinson, LLP  
15760 Ventura Blvd., #500  
Encino, CA 91436  
Tel: (818) 783-5530  
Fax: (818) 783-5507  
Email: mstapke@mrlp.com

### Tom Broz

Wildan Engineering  
2401 E. Katella Ave, Suite 450  
Anaheim, CA 92806-6073  
Tel: (714) 978-8251  
Cell: (949) 246-9970  
Email: tbroz@wildan.com

### Graham Dodson

Jacobs Engineering  
Vice President, LA Operations  
PO Box 6025, Suite 100  
Cypress, CA 90630  
Tel: (714) 503-3639  
Fax: (714) 503-3982  
Email: graham.dodson@jacobs.com

### Larry Eisenberg

Los Angeles Community  
College District  
Executive Director, Facilities P&D  
770 Wilshire Blvd.  
Los Angeles, CA 90017  
Tel: (213) 891-2366  
Fax: (213) 891-2390  
Email: eisenblh@email.laccd.edu

### Mike Gabaldon

Bureau of Reclamation  
Acting Dir., Technical Resources  
PO Box 25007  
Denver, CO 80225  
Tel: (303) 445-3720  
Fax: (303) 445-6750  
mgabaldon@do.usbr.gov

### Kenneth Hancock

ExxonMobil  
Mechanical Manager  
3700 W. 190th St. Admin Bldg 218  
Torrance, CA 90504  
Tel: (310) 212-1778  
Kenneth.hancock@exxonmobil.com

### Jim Kilcourse

Amgen, Inc.  
Executive Director  
One Amgen Ctr. Dr., M/S 38-4-B  
Thousand Oaks, CA 91320-1799  
Tel: (805) 447-3499  
Fax: (805) 499-9827  
Email: jamesk@amgen.com

### Phil Kirby

Faithful+Gould  
Regional Vice President-Pacific  
3020 Old Ranch Parkway, Suite 180  
Seal Beach, CA 90740  
Tel: (562) 314-4200 x4204  
Fax: (562) 314-4201  
Email: phil.kirby@fgould.com

### Mark Leja

State of California, DOT  
Construction Division Chief  
1120 N. Street  
Sacramento, CA 95814  
Tel: (916) 654-2157  
Fax: (916) 654-6345  
Email: mark.leja@dot.ca.gov

### Ken Lear

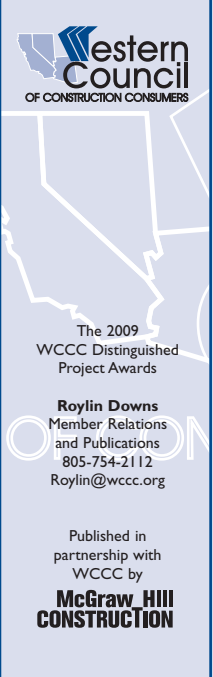
AT&T  
Dir., Planning, Design, Construction  
2600 Camino Ramon, Room 3E452  
San Ramon, CA 94583  
Tel: (925) 823-1070  
Fax: (925) 901-1007  
Email: kl2759@att.com

### Gene Waken

Corey Delta Construction  
CEO  
PO Box 637, Benecia, CA 94510  
Tel: (707) 747-7500  
Fax: (707) 745-5619  
Email: cd.waken@coreydelta.com

### Executive Director

**Andrew Wiktorowicz, P.E.**  
Western Council  
275 E Hillcrest Drive, Suite 215  
Thousand Oaks, CA 91360  
Tel: (818) 735-4733  
Fax: (818) 735-4738  
Email: andy@wccc.org

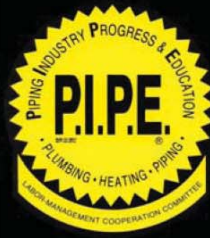


**Western Council**  
OF CONSTRUCTION CONSUMERS

The 2009  
WCCC Distinguished  
Project Awards

**Roylin Downs**  
Member Relations  
and Publications  
805-754-2112  
Roylin@wccc.org

Published in  
partnership with  
WCCC by  
**McGraw Hill**  
**CONSTRUCTION**



# Piping Industry Progress and Education Trust Fund & Labor-Management Cooperation Committee



*Congratulates the*

## 2009

## WCCC Distinguished Project Award Recipients

P.I.P.E. provides innovative services in labor relations, personnel certification, manpower recruitment and insurance to union contractors and unions in the Plumbing, Piping, and HVACR industries.

Let us know if we can assist in bringing your projects in successfully.



Southern  
California District  
Council 16  
(213) 487-4262  
[www.dc16.org](http://www.dc16.org)



Piping Industry Progress and  
Education Trust Fund  
(800) 457-7473  
[www.pipe.org](http://www.pipe.org)



California Plumbing and  
Mechanical Contractor's  
Association  
(877) 481-3040  
[www.cpmca.org](http://www.cpmca.org)



Airconditioning, Refrigeration and  
Mechanical Contractor's Association  
of Southern California, Inc.  
(909) 477-4515  
[www.arcamca.org](http://www.arcamca.org)



California Landscape &  
Irrigation Council, Inc.  
(866) 430-2542  
[www.cliccontractors.org](http://www.cliccontractors.org)