

UNC Asheville Fact Book 2007-2008

Office of Institutional Research
One University Heights
Asheville, NC 28804-8510
(828) 251-6619

Archer R. Gravely, Director
Ken Wilson, Applications Programmer
Rebecca Elkin, Research Associate
Glenna Trull, Information Processing Assistant

Also available on the World Wide Web at:
www.unca.edu/ir/factbook

Table of Contents



	Page	Table	Figure
I. UNCA History and Governance			
History of UNCA	2		
Chief Executive Officers	2		
UNCA Mission Statement	3		
UNC Asheville Strategic Plan	4		
UNCA Board of Trustees	5		
UNCA Foundation Board	6		
UNCA National Alumni Advisory Board	8		
 II. Students and Alumni			
Admissions			
<hr/>			
NC Public High School Graduates: History and Projections	10		1
Fall Applications, Acceptances and Enrollments by Sex	11	1	
Out-of-State Freshman Applications, Acceptances and Enrollments by State	12	2	
Distribution of New Freshman Enrollments by Region	13		2
New Freshman Admission Scores by Residence Status	14	3	
Freshman Mean SAT Scores by UNC Institution	15	4	
Fall Freshman SAT Scores and H.S. Rank Distributions	16		3
Percent of New Freshmen in Top 20 % of High School Class by UNC Institution	17	5	
New Fall Transfer Enrollments by Institution Type	18	6	
Source of New Undergraduate Transfer Students	19	7	
Enrollments and Retention			
<hr/>			
Annual FTE History and Projections	20		4
Historical Resident Credit Enrollment Trends and Projections	21	8	
Student Credit Hours by Funding Category: History and Projections	22	9	
Student Enrollment Demographic Profile	23	10	
Fall Enrolled Students by U.S. Region and State	24	11	
Enrolled Students by North Carolina Region and County	26	12	
Minority Presence: Fall Semesters	28	13	
Distribution of Student Age by Class	29	14	
UNC System Undergraduate Student Demographic Comparisons	29	15	
Residence Halls and Number of Students Housed	30	16	
Commuter vs Residence Hall Students	30	17	
Summer School Headcount Enrollment by Class	31	18	
Summer School Headcount, FTE, and SCH Enrollment	31	19	
Distance Education Enrollment by Site	32	20	
Distance Education SCH by Funding Category	32	21	
Retention of New Fall Entering Full-time Freshmen	33	22	
Retention of New Fall Entering Transfers	34	23	
Academic Program Inventory	35	24	
Enrollment by Major (Spring Semesters)	36	25	
Degrees Conferred by Academic Area and Major	37	26	
Average Undergraduate Class Size	38	27	

Programs	Page	Table	Figure
Grade Distribution by Course Level and Academic Year	39	28	
Weighted GPA by Academic Year and Course Level	40		5
Intercollegiate Athletics	41	29	
Asheville Graduate Center Participating Universitites and Programs	42	30	
Asheville Graduate Center Fall Headcount Enrollments	42	31	
Summer Conferences	43	32	
Continuing Education Enrollments	43	33	
Financial Aid			
Student Financial Aid by Source	44	34	
Students Receiving Financial Aid	45	35	
Intercollegiate Athletics Grants-In-Aid	46	36	
Alumni			
Current Residence of Alumni by US Region, State and Nation	47	37	
Alumni by North Carolina Region and County	49	38	

III. Faculty and Staff

UNCA Organizational Chart	52		6
Organizational Chart for Academic & Student Affairs	53		7
Organizational Chart for Administration, Financial and External Affairs	54		8
Organizational Chart for Student Affairs	55		9
Organizational Chart for Alumni & Development	56		10
Organization and Personnel	57	39	
Full-Time Employees by Type	60		11
Employees by Employment Status, Job Class, Race and Sex	61	40	
Full-Time Instructional Faculty by Rank, Sex and Tenure Status	62	41	
Full-Time Instructional Faculty with Terminal Degrees by Rank and Department	63	42	
Full-Time Instructional Faculty Salaries by Rank	64	43	
Faculty Salary Comparisons	65	44	

IV. Fiscal Resources

Current Fund Revenues and Expenditures	67	45	
Operating Expenditures by Function	68	46	
Tuition and Fees Per Year	69	47	
External Grants and Contracts Funding Amounts by Fiscal Year	70	48	
Endowed Funds	71		12
Source of Outright Gift Income by Year	71	49	
Alumni Donations	72	50	
Outright Gift Income Summary	72	51	
Campus Map	73		13
Building Inventory	74	52	
Percent of Space in Satisfactory Condition	75		14
Percent of Space Needing Renovation by Cost Level	75		15
Percentage of General Purpose Classrooms Utilized by Day and Time	76	53	
Classrooms and Labs by Building	77	54	
Residence Hall Capacity and Number of Students Housed	78	55	
Capital Improvements	79	56	
Ramsey Library Resources	79	57	

History and Governance

History of UNCA

- 1927 Founded as Buncombe County Junior College under the aegis of the Buncombe County public school system
- 1930 Merged with College of the City of Asheville; name changed to Biltmore Junior College
- 1936 Name changed to Asheville-Biltmore College and control passed to the Asheville City School Board
- 1957 Became first institution to qualify as a state-supported community college
- 1961 Institution moved to present location in North Asheville. First black student enrolled
- 1963 Asheville-Biltmore College became a state-supported senior college under a new board of trustees
- 1966 First baccalaureate degrees awarded
- 1969 Asheville-Biltmore College became the University of North Carolina at Asheville, one of six campuses of the Consolidated University
- 1972 The 10 remaining state-supported senior institutions were merged into a unified 16 member system, The University of North Carolina
- 1991 First master's degrees awarded in Liberal Arts
- 1992 Designated as a Liberal Arts I College by the UNC Board of Governors

Chief Executive Officers

1927-1932	S.B. Conley, Dean
1932-1936	A.C. Reynolds, President
1936-1941	Charles A. Lloyd, Dean
1941-1945	J.J. Stevenson, Dean
1945-1946	William H. Morgan, Dean
1946-1947	Clarence N. Gilbert, Dean
1947	R.A. Tomberlin, President
1947-1962	Glenn L. Bushey, President
1962-1969	William E. Highsmith, President
1969-1977	William E. Highsmith, Chancellor
1977	Arnold K. King, Acting Chancellor
1977-1984	William E. Highsmith, Chancellor
1984-1990	David G. Brown, Chancellor
1990-1991	Roy Carroll, Interim Chancellor
1991-1993	Samuel Schuman, Chancellor
1994	Larry Wilson, Interim Chancellor
1994-1999	Patsy Reed, Chancellor
1999-2005	James H. Mullen, Jr., Chancellor
2005-	Anne Ponder, Chancellor

Source: Chancellor's Office

UNCA Mission Statement

The University of North Carolina at Asheville offers a superior liberal arts education for well-prepared students who are committed to learning and personal growth. Its education is liberating, promoting the free and rigorous pursuit of truth, respect for differing points of view and heritage, and an understanding that values play a role in thought and action. Through this education the university aims to develop students of broad perspective who think critically and creatively, communicate effectively, and participate actively in their communities. UNCA is North Carolina's only designated public liberal arts university.

Small by choice, UNCA brings together faculty, students, and staff of diverse cultural backgrounds to interact closely in a supportive community. The university makes excellence in teaching the highest priority for its faculty. It fosters scholarship and creative activities by faculty and students alike.

UNCA provides undergraduate programs in the arts, the humanities, the natural and social sciences, and in selected pre-professional programs that are solidly grounded in the liberal arts. The university seeks to connect the traditional liberal arts fields through interdisciplinary studies and to integrate these areas of inquiry with programs that prepare students for rewarding careers. To enhance and extend the undergraduate programs, UNCA offers an interdisciplinary Master of Liberal Arts.

As a public university, UNCA serves the region and state in ways that complement its educational mission. It encourages students, faculty, and staff to interact with and serve the community, and it shares cultural and educational resources with citizens at all stages of life and learning. The university houses the Asheville Graduate Center, the North Carolina Center for Creative Retirement, and other programs which provide opportunities to citizens for continued learning and public service.

The ultimate aim of the university is to provide students the best possible opportunity to acquire the skills, knowledge, and understanding necessary to pursue their goals, to find meaning in their lives, and to take their places as contributing citizens of a changing society.

Mission statement approved by the UNCA Board of Trustees on August 24, 2000

UNC Asheville Strategic Plan

The Standard of Excellence in Public Undergraduate Education

Our way of practicing the liberal arts embraces the centrality of learning, rigorous undergraduate scholarship, creative expression, exemplary teaching, and an informed commitment to serving our community and to leading our complex world

Liberal Arts * Public * Sustainability

Undergraduate Education:

Serve as the standard of excellence for public undergraduate education, focused on intentional interdisciplinarity and quality faculty-student mentoring.

Undergraduate Research:

Within the next decade, UNC Asheville will be the leading undergraduate research institution for high quality, substantive, faculty/student Undergraduate Research.

Assure continual stewardship of the program, its curricular prominence, and focus on societal concerns.

The Campus Experience:

Provide our students and campus community with a robust undergraduate learning experience, reflecting a more engaged, inclusive, and cohesive campus community

Diversity & Inclusion:

Assert and demonstrate our individual and collective responsibility to invite, honor, and learn from our differences.

Intentionally reflect the vibrant demographics, in all its complexity, of our city, our region, our State, and our world.

North Carolina:

Attract, retain, and graduate North Carolina students of high academic promise by eliminating financial barriers to participation.

Furnish North Carolina's economy with highly accomplished thinkers, negotiators, planners, collaborators, and problem-solvers.

Assure that our campus, our region, and our State understand how uniquely positioned we are to define the practical, life-long value of a liberal arts education in the 21st century.

Asheville:

Share responsibility with the greater Asheville community for collaborations on issues of mutual concern, benefit, and accomplishment.

Economic Sustainability:

Claim our distinctiveness within the UNC system so that our optimal enrollment and unique mission is acknowledged and rewarded within the State funding formula.

Increase private fundraising so the University can command its own future.

Social Sustainability:

Build a campus community that is cohesive, respectful, vibrant, creative, and responsible.

Invest in those variables that we know will improve student, faculty, and staff retention and success.

Environmental Sustainability:

Enhance our state-wide leadership and recognition for our conservation, energy use, and green building practices.

Pursue creative, respectful, mission-focused campus expansion.

UNC Asheville students

develop an inquisitive, interdisciplinary, engaged way of life in a vibrant university community which is just, collaborative, and increasingly diverse.

They understand the interconnectedness of all disciplines, ideas, actions, and individuals; they practice lively engagement with others and the world; they have built a strong understanding of self, purpose, connection to the world, and their potential for changing it. Liberal arts is a habit of heart and mind that our students can articulate as a foundation for their life-long passion for learning and the University that inspired it.

They demonstrate an accountability to their own moral and ethical principles, and a responsibility to individuals, community, and humanity; they develop a service orientation, a sense of adventure, and respect for differences; they discover the joys of entrepreneurship, enlightened risk-taking, and responsible activism

They develop the inspiration, skills, and discipline to identify individual, community, and global needs; critical thinking and problem solving skills to address those needs; courage, inclination, and work ethic to develop solutions, work toward them, and inspire others to do the same. Students identify their unique University experience as something to cherish and support throughout their lives

UNCA Board of Trustees
2007 - 2008

<i>Member</i>	<i>Business</i>	<i>Home City</i>	<i>Term Expires</i>
Janice Brumit <i>Chair</i>	Vice President Retired	Asheville	2009
Alfred J. Whitesides, Jr. <i>Vice Chair</i>	Vice President Mountain 1st	Asheville	2009
Douglas Orr <i>Secretary</i>	President Emeritus Warren Wilson College	Black Mountain	2011
James R. Buckner	CEO IMPACT Educational Consulting Assoc., Inc.	Sewanee GA	2009
Tristyn Card	President UNCA Student Government	Asheville	2008
David Cogburn, M.D.	Blue Ridge Mountain Dermatology	Asheville	2011
Leslie Coman	Public Affairs Specialist	Raleigh	2009
Joseph Damore	President & CEO Mission Hospitals	Asheville	2009
Sue McClinton	Vice President William S. Hein & Company	Asheville	2011
Audrey Byrd Mosley	National Academy of Sciences	Washington DC	2011
Virgil Smith	Vice President of Talent Management Gannet & Company	Asheville	2011
Cissie Stevens	Retired	Asheville	2009
Pamela Turner	Co-Owner Mills Manufacturing	Asheville	2011

Last update: 11/13/07
Source: Chancellor's Office

UNCA Foundation Board
Fall 2007

<i>Member</i>	<i>Home City</i>	<i>Term Expires</i>
Bob Roberts <i>Chair</i>	Asheville	2010 (Term 2)
Jim Heggland <i>Associate Chair</i>	Asheville	2008 (Term 1)
Charles Atkins	Raleigh	2010 (Term 2)
Rob Bowen <i>Faculty Representative</i>	Asheville	2008 (Term 2)
Bill Boyum	Asheville	2009 (Term 1)
David Brown	Asheville	2010 (Term 2)
Tristyn Card <i>Student Representative (SGA)</i>	Zebulon	2008 (Term 2)
Guadalupe Chavarria	Asheville	2010 (Term 1)
Bobby Daugherty	Black Mountain	2010 (Term 2)
Al Davis	Asheville	2008 (Term 1)
J.W. Davis	Flat Rock	2010 (Term 1)
Charles Frederick	Asheville	2008 (Term 1)
Dianna B. Goodman	Asheville	2010 (Term 1)
George Goosmann III	Biltmore Forest	2010 (Term 1)
Harry Harrison	Asheville	2010 (Term 1)
Bert Holmes <i>Chancellor appointed Faculty Representative</i>	Asheville	2008 (Term 2)
Craig Madison	Fairview	2008 (Term 1)
George Morosani	Asheville	2010 (Term 1)
Teresa Morris	Asheville	2008 (Term 1)
Linda Nelms <i>Faculty Senate Representative</i>	Asheville	2008 (Term 2)

UNCA Foundation Board
(Continued)

<i>Member</i>	<i>Home City</i>	<i>Term Expires</i>
Kenneth Partin	Asheville	2008 (Term 1)
Cyndee Patterson	Charlotte	2010 (Term 2)
Neal Rhoades	Raleigh	2009 (Term 1)
Robby Russell	Arden	2010 (Term 2)
Robert Sipes	Arden	2010 (Term 2)
Ed Towson III	Asheville	2010 (Term 2)
Charles Wood	Fairview	2009 (Term 1)
Frosene Zeis	Asheville	2009 (Term 1)

Ex-Officio:

Anne Ponder
Chancellor

Phil Richman, Interim
Vice Chancellor for Finance & Operations, Foundation Treasurer

William P. Massey
Vice Chancellor for Alumni & Development, Foundation Secretary

David Cogburn
UNC Asheville Board of Trustees Liaison

UNCA National Alumni Advisory Council
2007-08

Derek J. Allen '93	Greensboro
Barbara Ann Baker '71	Durham
Joseph M. Beckert '88.....	Charlotte
Jason L. Boyles '01.....	Charlotte
Athena F. Brooks '88.....	Asheville
Anne May Cagle '86.....	Rock Hill, SC
James C. Carter '00	Asheville
R. Wiley Cash '00.....	Lafayette, LA
Crystal R. Dunham '93	Charlotte
Jasmin M. Gentling '99	Asheville
Tarik A. Glenn '06	Asheville
Steve A. Green '01.....	Asheville
Heather E. Hudson '66	Camden, AR
Neal D. Rhoades '86.....	Raleigh
Betty J. Seifert '83	Cornelius
B. Smith Thomas '73.....	Lawrenceville, GA
Karla L. Worley '97	Dunwoody, GA

Ex-Officio

Anne Ponder	<i>Chancellor</i>
William P. Massey.....	<i>Vice Chancellor for Alumni and Development</i>
Kevan D. Frazier '92	<i>Associate Vice Chancellor for Alumni</i>

Students and Alumni

Figure 1: NC Public High School Graduates: History and Projections

Number of Graduates				
North Carolina Regions				
Year	Eastern	Piedmont	Western	NC Total
85	21,559	35,656	9,497	66,712
86	21,361	35,105	9,399	65,865
87	20,482	35,946	9,617	66,045
88	21,426	37,233	9,489	68,148
89	22,112	37,853	9,744	69,709
90	20,732	34,951	8,838	64,521
91	20,447	33,403	8,683	62,533
92	20,039	32,308	8,564	60,911
93	20,019	31,974	8,218	60,211
94	19,107	30,568	7,820	57,495
95	19,767	31,494	8,011	59,272
96	18,593	30,513	7,664	56,770
97	18,655	31,416	7,815	57,886
98	18,946	32,099	8,004	59,049
99	18,848	32,916	8,012	59,776
00	19,446	34,281	8,160	61,887
01	19,755	35,153	8,106	63,014
02	20,187	37,015	8,479	65,681
03	20,889	40,006	8,673	69,568
04	21,560	41,460	8,833	71,853
05	22,168	43,529	8,994	74,691
06	22,652	45,126	9,162	76,940
07	23,278	47,731	9,597	80,606
08	23,122	47,969	9,570	80,661
09	23,898	50,078	9,562	83,538
10	24,093	50,706	9,731	84,530
11	24,296	51,555	9,664	85,515
12	23,671	51,246	9,433	84,350
13	23,647	52,743	9,444	85,834
14	23,422	52,599	9,163	85,184
15	23,198	53,280	9,252	85,730
16	23,713	55,359	9,143	88,215
17	24,314	58,420	9,455	92,189
18	24,934	60,004	9,432	94,370

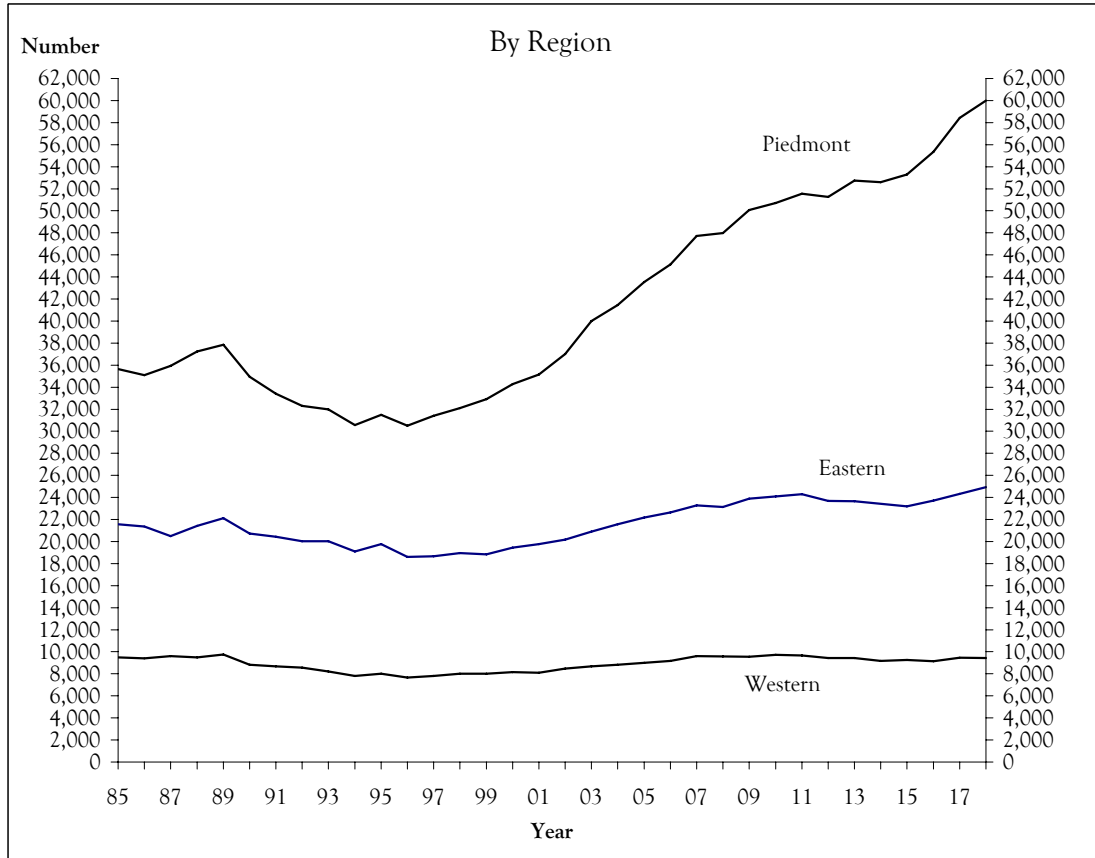
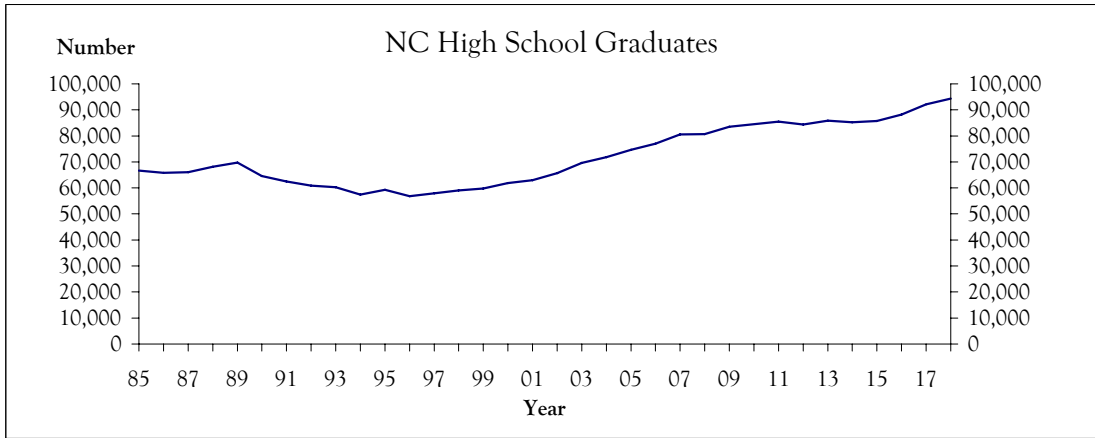


Table 1
 Fall Applications*, Acceptances and Enrollments
 New Degree-Seeking Students by Sex: Three-Year Trend

		2005			2006			2007		
		Female	Male	Total	Female	Male	Total	Female	Male	Total
First-Time Freshmen	Number of Applicants	1,395	967	2,362	1,519	1134	2,653	1,546	1,108	2,654
	Number Accepted	953	529	1,482	1155	734	1,889	1,237	778	2,015
	Accept/Apply Ratio	68.3	54.7	62.7	76.0	64.7	71.2	80.0	70.2	75.9
	Number Enrolled	291	181	472	331	241	572	344	233	577
	Enroll/Accept Ratio	30.5	34.2	31.8	28.7	32.8	30.3	27.8	29.9	28.6
New Transfers	Number of Applicants	341	240	581	318	260	578	322	276	598
	Number Accepted	289	179	468	282	215	497	264	219	483
	Accept/Apply Ratio	84.8	74.6	80.6	88.7	82.7	86.0	82.0	79.3	80.8
	Number Enrolled	174	114	288	168	137	305	149	138	287
	Enroll/Accept Ratio	60.2	63.7	61.5	59.6	63.7	61.4	56.4	63.0	59.4
New Graduate Students	Number of Applicants	12	5	17	5	.	5	18	4	22
	Number Accepted	12	5	17	5	.	5	18	4	22
	Accept/Apply Ratio	100.0	100.0	100.0	100.0	.	100.0	100.0	100.0	100.0
	Number Enrolled	11	4	15	1	.	1	11	2	13
	Enroll/Accept Ratio	91.7	80.0	88.2	20.0	.	20.0	61.1	50.0	59.1

* Completed applications with decision.

Table 2
Out of State Freshman Applications, Acceptances and Enrollments by State

	2005			2006			2007		
	Applied	Accepted	Enrolled	Applied	Accepted	Enrolled	Applied	Accepted	Enrolled
American Abroad	1	0	0						
Military				2	1	1	3	2	0
Alaska	1	1	1	2	2	0	2	1	0
Alabama	15	10	1	21	15	4	22	17	3
Arkansas	2	2	0	6	5	0	5	5	2
American Samoa	1	0	0						
Arizona	5	3	0				3	1	0
California	14	5	1	13	6	1	19	13	4
Colorado	5	2	0	11	7	0	8	7	1
Connecticut	18	6	0	17	4	0	25	14	2
District of Columbia	4	1	0	12	7	1	14	8	2
Delaware	1	0	0	6	5	0	2	2	1
Florida	67	41	11	77	56	10	71	47	9
Georgia	85	50	10	100	65	13	79	60	12
Hawaii	1	1	0						
Iowa	2	2	0	1	1	0	2	2	0
Idaho				3	2	0	2	2	0
Illinois	21	15	4	31	20	3	21	16	2
Indiana	6	5	2	9	6	1	1	0	0
Kansas	3	2	1	3	2	0	3	3	0
Kentucky	11	6	3	6	4	3	15	10	2
Louisiana	9	4	0	7	4	2	4	3	1
Massachusetts	27	13	1	18	10	1	16	9	1
Maryland	45	18	3	44	33	4	44	36	8
Maine	4	3	0	6	3	0	6	5	1
Michigan	11	6	2	12	5	3	5	5	0
Minnesota	6	2	0	6	2	1	4	4	1
Missouri	4	3	0	6	6	0	5	3	2
Mississippi	4	2	1	4	2	0	2	1	0
Montana							1	1	0
North Carolina							3	0	0
North Dakota	1	0	0						
New Hampshire	4	2	1	8	4	0	5	5	0
New Jersey	46	25	3	29	17	1	38	24	4
New Mexico				1	1	0	3	3	1
Nevada	1	1	0	2	2	1	2	1	1
New York	41	20	3	49	28	2	29	22	2
Ohio	25	15	2	25	19	0	23	13	3
Oklahoma	1	0	0	2	2	0			
Oregon	2	2	0	2	1	0			
Pennsylvania	34	16	5	39	20	4	34	23	3
Rhode Island	3	2	0	9	5	0	3	2	1
South Carolina	37	12	4	36	21	4	40	29	8
Tennessee	62	46	7	64	49	9	62	44	5
Texas	17	10	2	22	13	6	23	15	2
Unknown				4	0	0			
Utah	1	1	1	2	1	0	2	2	0
Virginia	57	36	7	70	50	11	69	49	8
Virgin Islands							4	1	0
Vermont	9	6	0	7	2	0	10	7	2
Washington				5	4	0	5	4	1
Wisconsin	7	6	0	6	1	0	5	3	0
West Virginia	5	2	0	7	6	0	7	6	1
Wyoming	1	0	0	1	0	0	1	0	0
International	27	20	3	48	30	7	42	24	4
	754	425	79	861	549	93	795	554	100

Figure 2: Distribution of New Freshman Enrollments by Region
Fall Semesters

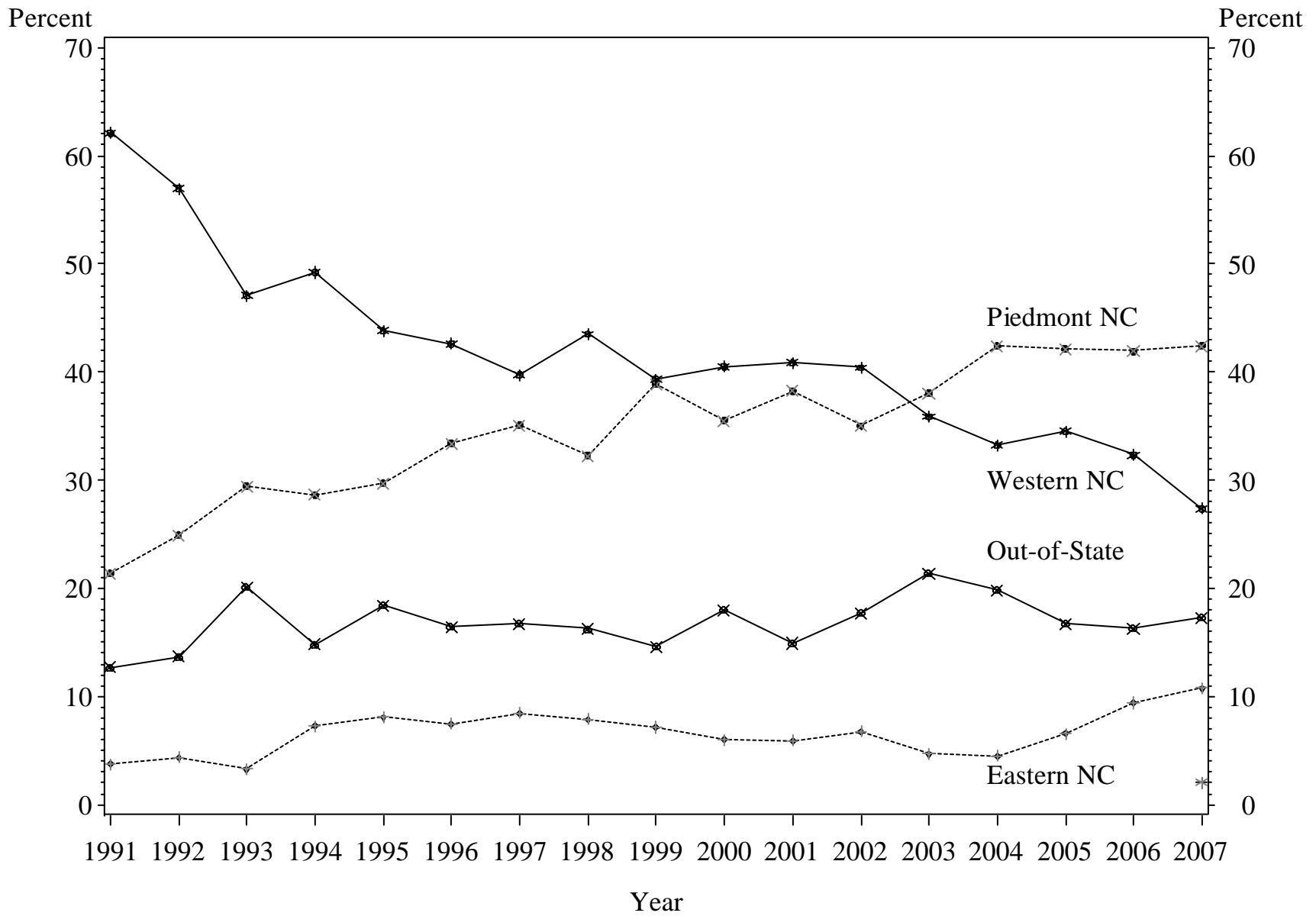


Table 3
New Freshman Admission Scores
by Residence Status

Fall Semester		N	Combined SAT			Top 20%	H.S. GPA		H.S. GPA Weighted	
			Mean	25th %tile	75th %tile	H.S. Class Percent	% Submit Mean		% Submit Mean	
							Submit	Mean	Submit	Mean
1998	In-State	402	1,143	1,045	1,240	52.9	6.0	3.31	99.5	3.76
	Out-of-State	78	1,131	1,030	1,230	49.1	0.0		89.7	3.57
	Year Total	480	1,142	1,040	1,230	52.4	5.0	3.31	97.9	3.73
1999	In-State	393	1,153	1,060	1,240	51.2	90.8	3.38	97.7	3.81
	Out-of-State	67	1,134	1,050	1,210	50.0	16.4	3.19	86.6	3.47
	Year Total	460	1,151	1,060	1,240	51.1	80.0	3.38	96.1	3.77
2000	In-State	411	1,155	1,060	1,240	51.6	92.2	3.40	97.8	3.82
	Out-of-State	90	1,155	1,070	1,230	49.2	25.6	3.37	94.4	3.53
	Year Total	501	1,155	1,070	1,230	51.2	80.2	3.40	97.2	3.77
2001	In-State	387	1,163	1,070	1,240	53.4	92.8	3.42	96.4	3.90
	Out-of-State	68	1,139	1,040	1,250	61.4	29.4	3.56	83.8	3.70
	Year Total	455	1,160	1,060	1,240	54.3	83.3	3.42	94.5	3.87
2002	In-State	352	1,164	1,050	1,260	50.6	92.6	3.39	97.2	3.84
	Out-of-State	76	1,138	1,060	1,240	45.1	43.4	3.44	86.8	3.67
	Year Total	428	1,160	1,060	1,260	49.9	83.9	3.39	95.3	3.81
2003	In-State	471	1,164	1,070	1,260	43.4	90.2	3.36	92.6	3.81
	Out-of-State	128	1,173	1,080	1,250	52.0	35.2	3.35	70.3	3.63
	Year Total	599	1,166	1,070	1,250	44.7	78.5	3.36	87.8	3.78
2004	In-State	567	1,166	1,070	1,250	44.1	92.6	3.38	96.5	3.88
	Out-of-State	140	1,184	1,100	1,270	45.1	26.4	3.35	68.6	3.61
	Year Total	707	1,169	1,080	1,250	44.3	79.5	3.37	91.0	3.84
2005	In-State	393	1,184	1,090	1,280	54.9	89.8	3.45	93.1	4.00
	Out-of-State	79	1,176	1,045	1,280	51.0	41.8	3.44	69.6	3.74
	Year Total	472	1,183	1,090	1,280	54.5	81.8	3.45	89.2	3.97
2006	In-State	479	1,162	1,070	1,260	43.8	90.6	3.35	95.0	3.86
	Out-of-State	93	1,146	1,040	1,240	52.2	41.9	3.43	72.0	3.64
	Year Total	572	1,160	1,060	1,250	44.6	82.7	3.36	91.3	3.83
2007	In-State	477	1,153	1,060	1,250	44.3	90.2	3.38	94.8	3.91
	Out-of-State	100	1,164	1,100	1,250	51.0	45.0	3.44	71.0	3.73
	Year Total	577	1,155	1,070	1,250	45.0	82.3	3.38	90.6	3.89

*Weighted HS GPA includes advanced courses that carry more than four quality points per credit hour.

Table 4
Fall Freshman Average SAT Scores* by UNC Institution

UNC School	1997	1998	1999	2000	2001	2002	2003	2004	2005	Fall 2006**		Fall 2007**	
										Combined	Writing	Combined	Writing
UNCCH	1220	1230	1245	1251	1257	1267	1282	1287	1299	1292	627	1302	637
NCSU	1154	1159	1179	1185	1175	1193	1195	1193	1183	1177	555	1171	557
UNCW	1080	1082	1086	1097	1091	1106	1104	1126	1134	1149	548	1157	557
UNCA	1150	1142	1151	1155	1160	1160	1166	1169	1184	1160	566	1154	565
ASU	1076	1075	1092	1086	1101	1111	1115	1123	1131	1129	530	1125	540
NCSA	1139	1136	1109	1104	1113	1154	1153	1105	1123	1094	538	1103	538
UNCC	1015	1013	1034	1043	1052	1065	1069	1079	1082	1064	504	1064	508
UNCG	1028	1030	1038	1037	1033	1035	1045	1045	1051	1044	504	1039	506
WCU	980	998	994	1004	1011	1012	1023	1027	1027	1022	483	1022	485
ECU	1014	1019	1016	1035	1029	1036	1048	1043	1042	1015	488	1019	485
UNCP	914	921	932	927	924	934	950	948	938	939	445	950	446
NCAT	928	922	911	896	898	899	889	889	893	883	423	888	422
WSSU	849	845	837	869	865	868	867	888	900	892	426	876	421
ECSU	825	823	823	822	837	817	848	841	849	835	400	846	409
FSU	833	833	867	840	845	868	867	845	847	857	408	846	403
NCCU	894	898	876	860	861	852	834	855	861	860	419	842	408
UNC Average	1060	1064	1068	1073	1071	1072	1075	1079	1082	1078	516	1076	518
N.C. Average	978	982	986	988	992	998	1001	1006	1010	1008	485	1004	482
U.S. Average	1016	1017	1016	1019	1020	1020	1026	1026	1028	1021	497	1017	494

* Combined score includes critical reading (or verbal) and mathematics.

** Since fall 2006, figures include both combined and writing scores.

Source: *Statistical Abstract of Higher Education in NC*, Table 53

Figure 3: Fall 2007 Freshman SAT Scores and H.S. Rank Distributions

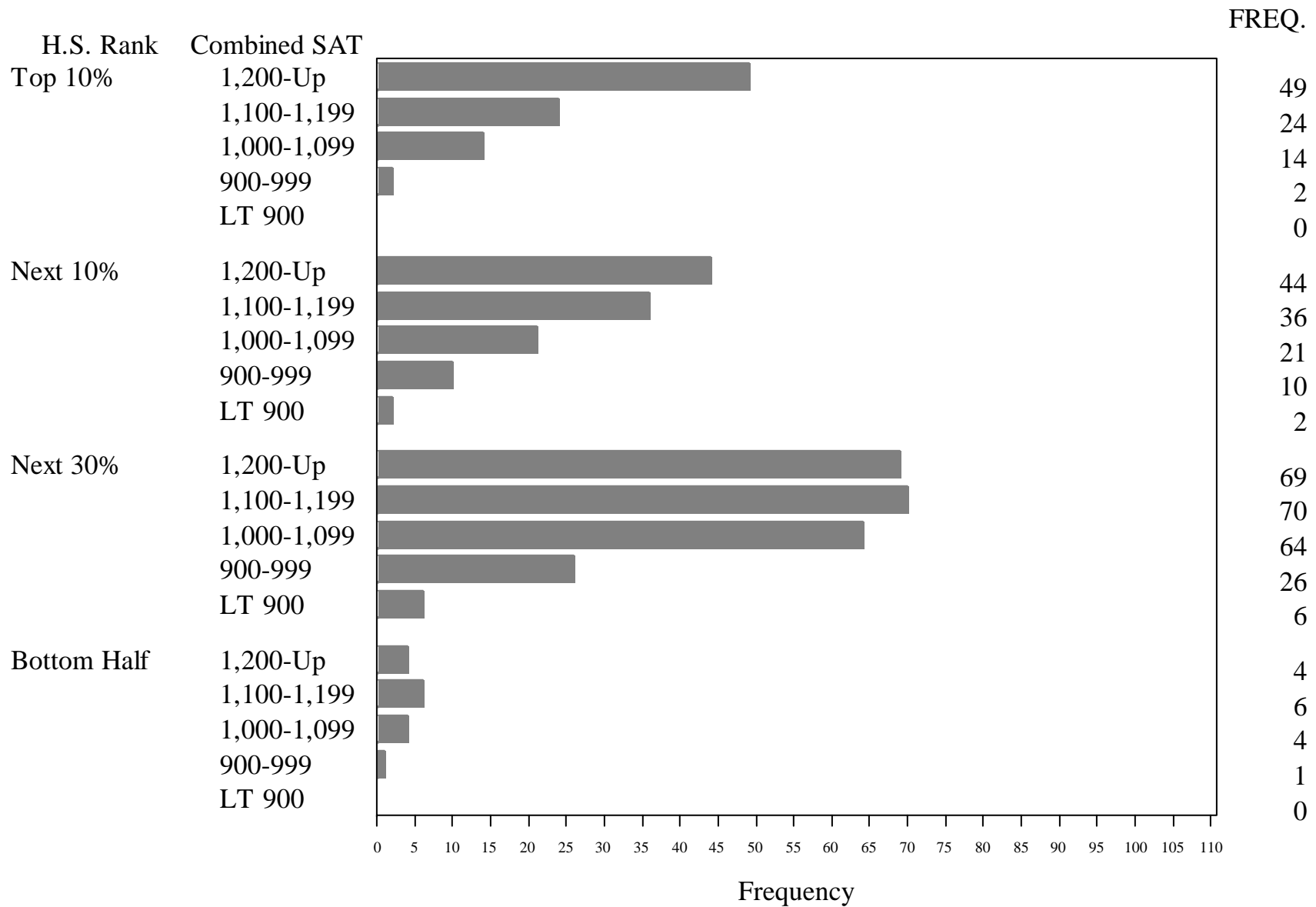


Table 5
Percent of New Freshmen in Top 20% of High School Class
by UNC Institution

UNC School	1996	1997	1998	1999	2000	2001	2002	2003	2004	2005	2006	2007
UNCCH	90	88	88	88	88	86	90	90	92	92	93	92
NCSU	59	57	61	67	67	64	68	71	74	68	69	67
UNCW	43	43	41	45	48	41	49	52	50	49	50	51
UNCA	52	52	53	52	51	54	49	45	45	54	45	45
ASU	44	40	36	41	36	38	40	39	37	39	39	40
UNCC	39	36	36	35	40	41	35	36	37	28	44	36
UNCG	34	34	36	34	35	32	32	32	33	35	33	35
NCSA	27	33	27	35	33	33	40	42	20	30	30	34
ECU	33	33	32	29	33	30	29	35	30	33	27	31
WCU	21	22	20	19	20	22	22	21	23	22	23	26
UNCP	28	30	27	26	23	23	21	25	24	23	23	24
ECSU	20	14	11	12	12	13	14	14	13	13	13	17
NCAT	18	20	18	15	15	15	14	15	16	15	15	15
WSSU	13	11	10	9	17	13	12	11	11	13	14	14
FSU	16	13	11	16	12	12	16	15	14	13	14	13
NCCU	18	18	14	10	11	11	14	11	12	12	11	9

Source: *Statistical Abstract of Higher Education in NC*, Table 57

Table 6
New Fall Transfer Enrollments by Institution Type

			2003		2004		2005		2006		2007	
			N	%	N	%	N	%	N	%	N	%
North Carolina	Public	Senior Institutions	50	16.4	31	13.7	37	12.8	46	15.1	39	13.6
		Community Colleges	113	37.2	110	48.5	138	47.9	147	48.2	140	48.8
	Private	Senior Institutions	26	8.6	14	6.2	16	5.6	23	7.5	20	7.0
		Junior Institutions	2	0.7	1	0.4						
		Other	1	0.3	3	1.3					3	1.0
	Other	Unknown	2	0.7								
Total		194	63.8	159	70.0	191	66.3	216	70.8	202	70.4	
Out of State	Public	Senior Institutions	40	13.2	27	11.9	40	13.9	25	8.2	26	9.1
		Junior Institutions	35	11.5	21	9.3	30	10.4	38	12.5	33	11.5
		Other	1	0.3	1	0.4	1	0.3				
	Private	Senior Institutions	26	8.6	13	5.7	20	6.9	20	6.6	20	7.0
		Junior Institutions	1	0.3			1	0.3			2	0.7
		Other	2	0.7	1	0.4	1	0.3	5	1.6	1	0.3
	Other	Foreign Institutions	3	1.0	5	2.2	4	1.4			3	1.0
		Unknown	2	0.7					1	0.3		
	Total		110	36.2	68	30.0	97	33.7	89	29.2	85	29.6
	Grand Total All Institutions			304	100.0	227	100.0	288	100.0	305	100.0	287

Table 7
Source of New Undergraduate Transfer Students
Fall 2007

Institution	Apply	Accept	Enroll
Asheville - Buncombe Technical Community College	113	82	67
Blue Ridge Community College	18	15	14
Western Carolina University	20	15	10
Appalachian State University	13	9	7
Catawba Valley Community College	10	8	5
Isothermal Community College	11	6	5
University of North Carolina at Greensboro	16	8	5
University of North Carolina at Wilmington	11	8	5
Warren Wilson College	10	8	5
Western Piedmont Community College	7	6	5
Cleveland Community College	9	7	4
Central Piedmont Community College	24	9	3
Forsyth Technical Community College	8	5	3
Guilford Technical Community College	4	3	3
Haywood Community College	11	5	3
McDowell Technical Community College	6	5	3
Mitchell Community College	4	3	3
Montreat College	6	5	3
North Carolina State University	6	5	3
Southwestern Community College	4	3	3
University of North Carolina at Charlotte	13	5	3
Wake Technical Community College	13	8	3
Other	206	159	122
Total			287

Note: Colleges enrolling fewer than three are counted in the "Other" category.
Applications and Accepts counted only for colleges enrolling students.

Figure 4
Annual FTE History and Projections

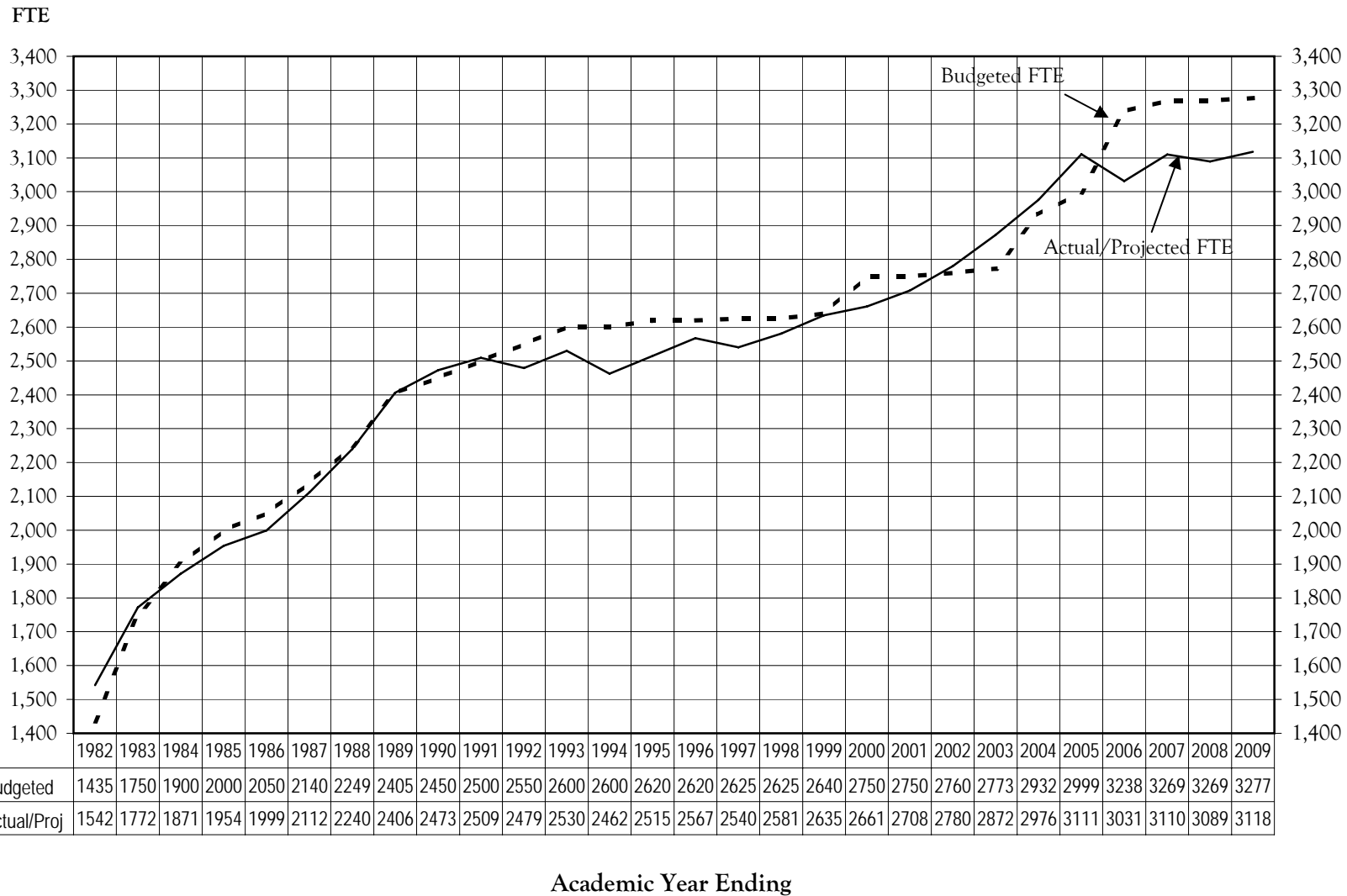


Table 8
Historical Resident Credit Enrollment Trends and Projections

Year	Fall						AY FTE			Budget Target	Year
	Headcount			FTE			Undergrad	Grad	Total		
	Undergrad	Grad	Total	Undergrad	Grad	Total					
1981-82	2,266		2,266	1,575		1,575	1,542		1,542	1,435	1981-82
1982-83	2,520		2,520	1,835		1,835	1,772		1,772	1,750	1982-83
1983-84	2,648		2,648	1,938		1,938	1,871		1,871	1,900	1983-84
1984-85	2,651		2,651	1,965		1,965	1,954		1,954	2,000	1984-85
1985-86	2,686		2,686	2,022		2,022	1,999		1,999	2,050	1985-86
1986-87	2,939		2,939	2,193		2,193	2,112		2,112	2,140	1986-87
1987-88	3,061		3,061	2,341		2,341	2,240		2,240	2,249	1987-88
1988-89	3,152		3,152	2,432		2,432	2,391	13	2,404	2,405	1988-89
1989-90	3,233	58	3,291	2,518	33	2,551	2,438	35	2,473	2,450	1989-90
1990-91	3,259	51	3,310	2,563	27	2,590	2,486	28	2,514	2,500	1990-91
1991-92	3,200	61	3,261	2,523	31	2,554	2,462	28	2,490	2,550	1991-92
1992-93	3,226	51	3,277	2,582	25	2,607	2,503	27	2,530	2,600	1992-93
1993-94	3,111	54	3,165	2,496	29	2,525	2,434	28	2,462	2,600	1993-94
1994-95	3,155	40	3,195	2,564	22	2,586	2,491	24	2,515	2,620	1994-95
1995-96	3,176	46	3,222	2,616	28	2,644	2,538	29	2,567	2,620	1995-96
1996-97	3,036	56	3,092	2,572	33	2,605	2,511	30	2,541	2,625	1996-97
1997-98	3,137	42	3,179	2,635	25	2,660	2,557	24	2,581	2,625	1997-98
1998-99	3,135	40	3,175	2,688	24	2,712	2,613	23	2,636	2,640	1998-99
1999-00	3,125	39	3,164	2,713	24	2,737	2,640	26	2,666	2,750	1999-00
2000-01	3,187	47	3,234	2,764	22	2,786	2,686	22	2,708	2,750	2000-01
2001-02	3,211	36	3,247	2,828	17	2,845	2,752	21	2,773	2,760	2001-02
2002-03	3,254	40	3,294	2,896	22	2,918	2,846	23	2,869	2,773	2002-03
2003-04	3,312	36	3,348	2,999	21	3,020	2,930	25	2,951	2,932	2003-04
2004-05	3,450	35	3,485	3,179	21	3,200	3,088	23	3,111	2,999	2004-05
2005-06	3,361	37	3,398	3,086	21	3,107	3,011	21	3,032	3,238	2005-06
2006-07	3,497	26	3,523	3,192	14	3,206	3,095	16	3,111	3,269	2006-07
2007-08	3,491	37	3,528	3,223	21	3,244	3,070	19	3,089	3,269	2007-08
2008-09	3,517	45	3,562	3,246	26	3,272	3,095	23	3,118	3,277	2008-09

Last Update: February 21, 2008

Table 9
Student Credit Hours (SCH) by Funding Category: History and Projections

AY	Student Credit Hours						
	Undergraduate					Graduate	
	Category 1	Category 2	Category 3	Category 4	Total	Category 2	Total
1986-87	29,215	18,671	12,423	222	60,531		60,531
1987-88	31,491	19,125	13,096	216	63,928		63,928
1988-89	33,369	19,783	15,422	179	68,753	180	68,933
1989-90	33,112	20,029	16,252	198	69,591	465	70,056
1990-91	33,268	21,158	17,077	191	71,694	373	72,067
1991-92	31,675	21,115	18,859	267	71,916	393	72,309
1992-93	31,163	21,304	20,443	256	73,166	377	73,543
1993-94	31,002	20,715	20,034	249	72,000	338	72,338
1994-95	31,987	20,477	20,340	241	73,045	351	73,396
1995-96	33,075	20,019	20,626	271	73,991	420	74,411
1996-97	32,712	19,734	20,464	186	73,096	405	73,501
1997-98	33,693	20,010	20,218	278	74,199	387	74,586
1998-99	34,839	22,876	18,184	305	76,204	351	76,555
1999-00	34,469	19,847	22,016	413	76,745	363	77,108
2000-01	34,484	20,170	22,443	491	77,588	308	77,896
2001-02	35,003	21,006	23,240	161	79,410	305	79,715
2002-03	35,783	22,385	23,665	466	82,299	334	82,633
2003-04	38,454	23,152	23,391	637	85,634	307	85,941
2004-05	33,132	29,259	26,272	0	88,663	347	89,010
2005-06	33,402	26,024	28,089	27	87,542	312	87,854
2006-07	33,659	26,245	29,394	81	89,379	225	89,604
2007-08	33,666	26,023	29,664	200	89,553	275	89,828
2008-09	35,221	28,295	30,531	100	94,147	450	94,597

Last Update: February 21, 2008

Funding Categories

Category 1: Communication, English Literature and Language, Math, Philosophy and Religion, Psychology, Social Sciences, History

Category 2: Area Studies, Education¹, Foreign Languages, Humanities, Interdisciplinary Studies, Liberal Studies, Business Management

Category 3: Biology, Computer Science, Environmental Science, Health Professions, Physical Sciences, Multimedia Arts and Sciences, Visual and Performing Arts

Category 4: Engineering

¹Student teaching courses are counted as Category 3

Table 10
Student Enrollment Demographic Profile
Fall 2007

	Undergraduate							Graduate			Grand Total
	New Freshmen	Other Freshmen	Sophomores	Juniors	Seniors	Non-Degree	Total	Masters Candidate	Special Graduate	Total	
Full-Time	572	179	652	695	775	69	2,942	3		3	2,945
Part-Time	5	25	40	85	223	170	548	20	14	34	582
In State	477	168	591	668	870	200	2,974	21	14	35	3,009
Out of State	100	36	101	112	128	39	516	2		2	518
Male	233	97	293	320	419	79	1,441	2	4	6	1,447
Female	344	107	399	460	579	160	2,049	21	10	31	2,080
White	492	187	598	704	908	188	3,077	22	12	34	3,111
Black	22	3	20	16	33	11	105		1	1	106
Hispanic	17	3	18	18	10	4	70				70
Asian	12		13	9	7	4	45				45
Amer Indian	4		1	3	3		11				11
Other Minority	7	2	13	7	15	5	49				49
Race Unknown	20	3	24	18	14	4	83	1	1	2	85
International	3	6	5	5	8	23	50				50
Dorm Students	518	87	269	132	79	28	1,113				1,113
Headcount	577	204	692	780	998	239	3,490	23	14	37	3,527

Table 11
Fall Enrolled Students by U.S. Region and State
(International Students by Country)

		2005		2006		2007	
		Enrolled	%	Enrolled	%	Enrolled	%
The South	Alabama	15	0.4	15	0.4	17	0.5
	Arkansas	4	0.1	3	0.1	5	0.1
	Florida	43	1.3	45	1.3	41	1.2
	Georgia	60	1.8	66	1.9	66	1.9
	Kentucky	9	0.3	13	0.4	9	0.3
	Louisiana	11	0.3	7	0.2	4	0.1
	Mississippi	5	0.1	4	0.1	1	0.0
	North Carolina	2,887	85.0	2,951	84.4	3,004	85.2
	South Carolina	25	0.7	23	0.7	32	0.9
	Tennessee	37	1.1	47	1.3	35	1.0
	Virginia	46	1.4	65	1.9	57	1.6
	West Virginia	5	0.1	6	0.2	4	0.1
	Region Total	3,147	92.6	3,245	92.8	3,275	92.9
Mid-Atlantic	Delaware	1	0.0	1	0.0	1	0.0
	District of Columbia	2	0.1	3	0.1	4	0.1
	Maryland	26	0.8	16	0.5	22	0.6
	New Jersey	10	0.3	13	0.4	15	0.4
	New York	14	0.4	13	0.4	13	0.4
	Pennsylvania	25	0.7	31	0.9	24	0.7
	Region Total	78	2.3	77	2.2	79	2.2
New England	Connecticut	12	0.4	8	0.2	6	0.2
	Maine	8	0.2	4	0.1	2	0.1
	Massachusetts	8	0.2	8	0.2	10	0.3
	New Hampshire	2	0.1	3	0.1	1	0.0
	Rhode Island	0	0.0	0	0.0	1	0.0
	Vermont	5	0.1	4	0.1	4	0.1
Region Total	35	1.0	27	0.8	24	0.7	
Midwest	Illinois	17	0.5	19	0.5	14	0.4
	Indiana	6	0.2	7	0.2	6	0.2
	Iowa	3	0.1	2	0.1	1	0.0
	Kansas	2	0.1	2	0.1	3	0.1
	Michigan	8	0.2	8	0.2	6	0.2
	Minnesota	1	0.0	3	0.1	5	0.1
	Missouri	4	0.1	2	0.1	5	0.1
	North Dakota	1	0.0	0	0.0	0	0.0
	Ohio	11	0.3	9	0.3	11	0.3
	South Dakota	1	0.0	0	0.0	0	0.0
	Wisconsin	3	0.1	4	0.1	1	0.0
	Region Total	57	1.7	56	1.6	52	1.5
The Southwest	Arizona	1	0.0	3	0.1	2	0.1
	New Mexico	0	0.0	1	0.0	1	0.0
	Oklahoma	4	0.1	3	0.1	2	0.1
	Texas	10	0.3	14	0.4	12	0.3
	Region Total	15	0.4	21	0.6	17	0.5
The West	Alaska	1	0.0	1	0.0	2	0.1
	California	6	0.2	8	0.2	13	0.4
	Colorado	6	0.2	7	0.2	3	0.1
	Hawaii	0	0.0	1	0.0	0	0.0
	Idaho	1	0.0	1	0.0	1	0.0

Table 11
Fall Enrolled Students by U.S. Region and State
(International Students by Country)

		2005		2006		2007		
		Enrolled	%	Enrolled	%	Enrolled	%	
	Nevada	0	0.0	1	0.0	2	0.1	
	Oregon	1	0.0	2	0.1	0	0.0	
	Utah	1	0.0	2	0.1	1	0.0	
	Washington	1	0.0	2	0.1	3	0.1	
	Wyoming	1	0.0	3	0.1	2	0.1	
	Region Total	18	0.5	28	0.8	27	0.8	
Unknown	Unknown	7	0.2	4	0.1	3	0.1	
	Region Total	7	0.2	4	0.1	3	0.1	
Territories	Puerto Rico	0	0.0	0	0.0	1	0.0	
	Region Total	0	0.0	0	0.0	1	0.0	
International	Argentina	2	0.1	0	0.0	0	0.0	
	Australia	0	0.0	0	0.0	1	0.0	
	Belgium	0	0.0	0	0.0	1	0.0	
	Belize	0	0.0	0	0.0	11	0.3	
	Bhutan	0	0.0	0	0.0	4	0.1	
	Bosnia-Herzegovina	1	0.0	0	0.0	0	0.0	
	Brazil	2	0.1	2	0.1	3	0.1	
	Cameroon	1	0.0	0	0.0	0	0.0	
	Canada	5	0.1	4	0.1	4	0.1	
	Chile	0	0.0	0	0.0	1	0.0	
	China	0	0.0	0	0.0	1	0.0	
	Denmark	0	0.0	1	0.0	0	0.0	
	East Germany	0	0.0	0	0.0	3	0.1	
	Ecuador	1	0.0	1	0.0	0	0.0	
	Finland	1	0.0	1	0.0	1	0.0	
	France	5	0.1	5	0.1	5	0.1	
	Germany	3	0.1	3	0.1	0	0.0	
	Indonesia	2	0.1	0	0.0	0	0.0	
	Ireland	1	0.0	0	0.0	0	0.0	
	Italy	0	0.0	0	0.0	1	0.0	
	Japan	3	0.1	1	0.0	3	0.1	
	Mexico	3	0.1	3	0.1	6	0.2	
	New Zealand	1	0.0	1	0.0	0	0.0	
	Peoples Rep. Of China	0	0.0	1	0.0	0	0.0	
	Russia	1	0.0	4	0.1	0	0.0	
	South Africa	1	0.0	1	0.0	0	0.0	
	South Korea	3	0.1	2	0.1	3	0.1	
	Spain	1	0.0	2	0.1	0	0.0	
	Sweden	0	0.0	2	0.1	0	0.0	
	The Bahamas	0	0.0	0	0.0	1	0.0	
	Turkey	1	0.0	1	0.0	0	0.0	
	United Kingdom	2	0.1	4	0.1	0	0.0	
	Venezuela	1	0.0	0	0.0	0	0.0	
	Region Total	41	1.2	39	1.1	49	1.4	
	Total		3,398	100.0	3,497	100.0	3,527	100.0

Table 12
Fall Enrolled Students by North Carolina Region and County

		2005		2006		2007		
		Enrolled	%	Enrolled	%	Enrolled	%	
Western NC	Alleghany	1	0.0	1	0.0	2	0.1	
	Ashe	5	0.2	8	0.3	5	0.2	
	Avery	7	0.2	8	0.3	7	0.2	
	Buncombe	1,065	36.9	1,138	38.6	1,095	36.5	
	Burke	51	1.8	38	1.3	47	1.6	
	Caldwell	11	0.4	17	0.6	16	0.5	
	Cherokee	14	0.5	9	0.3	10	0.3	
	Clay	6	0.2	9	0.3	7	0.2	
	Graham	0	0.0	2	0.1	1	0.0	
	Haywood	45	1.6	39	1.3	38	1.3	
	Henderson	170	5.9	173	5.9	162	5.4	
	Jackson	14	0.5	15	0.5	15	0.5	
	Macon	17	0.6	12	0.4	18	0.6	
	Madison	42	1.5	45	1.5	40	1.3	
	McDowell	38	1.3	39	1.3	34	1.1	
	Mitchell	9	0.3	3	0.1	7	0.2	
	Polk	42	1.5	30	1.0	25	0.8	
	Rutherford	30	1.0	32	1.1	39	1.3	
	Surry	14	0.5	16	0.5	15	0.5	
	Swain	3	0.1	5	0.2	11	0.4	
	Transylvania	52	1.8	43	1.5	45	1.5	
	Watauga	28	1.0	25	0.8	28	0.9	
	Wilkes	9	0.3	7	0.2	10	0.3	
	Yancey	35	1.2	35	1.2	25	0.8	
		Region Total	1,708	59.2	1,749	59.3	1,702	56.7
	Piedmont NC	Alamance	18	0.6	17	0.6	16	0.5
Alexander		3	0.1	3	0.1	4	0.1	
Anson		2	0.1	2	0.1	3	0.1	
Buncombe		0	0.0	0	0.0	2	0.1	
Cabarrus		19	0.7	16	0.5	18	0.6	
Caswell		2	0.1	2	0.1	1	0.0	
Catawba		43	1.5	42	1.4	44	1.5	
Chatham		20	0.7	26	0.9	26	0.9	
Cleveland		12	0.4	16	0.5	17	0.6	
Davidson		17	0.6	12	0.4	9	0.3	
Davie		16	0.6	11	0.4	13	0.4	
Durham		34	1.2	50	1.7	57	1.9	
Forsyth		109	3.8	106	3.6	104	3.5	
Franklin		7	0.2	7	0.2	5	0.2	
Gaston		27	0.9	25	0.8	28	0.9	
Granville		3	0.1	3	0.1	3	0.1	
Guilford		79	2.7	82	2.8	82	2.7	
Iredell		29	1.0	32	1.1	37	1.2	
Lee		3	0.1	3	0.1	2	0.1	
Lincoln		16	0.6	16	0.5	20	0.7	
Mecklenburg		152	5.3	154	5.2	157	5.2	
Montgomery		2	0.1	1	0.0	0	0.0	
Moore		14	0.5	11	0.4	14	0.5	
Orange		133	4.6	133	4.5	133	4.4	
Person		4	0.1	4	0.1	5	0.2	
Randolph		13	0.5	9	0.3	9	0.3	
Richmond	3	0.1	5	0.2	5	0.2		
Rockingham	8	0.3	4	0.1	9	0.3		
Rowan	19	0.7	18	0.6	20	0.7		

Table 12
Fall Enrolled Students by North Carolina Region and County

		2005		2006		2007	
		Enrolled	%	Enrolled	%	Enrolled	%
	Stanly	4	0.1	3	0.1	4	0.1
	Stokes	8	0.3	10	0.3	9	0.3
	Union	25	0.9	38	1.3	44	1.5
	Vance	1	0.0	5	0.2	3	0.1
	Wake	165	5.7	108	3.7	156	5.2
	Warren	1	0.0	0	0.0	0	0.0
	Yadkin	1	0.0	8	0.3	11	0.4
	Region Total	1,012	35.1	982	33.3	1,070	35.6
Eastern NC	Beaufort	0	0.0	1	0.0	1	0.0
	Bladen	1	0.0	0	0.0	0	0.0
	Brunswick	9	0.3	13	0.4	13	0.4
	Camden	2	0.1	2	0.1	0	0.0
	Carteret	13	0.5	9	0.3	12	0.4
	Columbus	3	0.1	1	0.0	0	0.0
	Craven	6	0.2	6	0.2	9	0.3
	Cumberland	12	0.4	11	0.4	11	0.4
	Currituck	3	0.1	3	0.1	3	0.1
	Dare	3	0.1	10	0.3	10	0.3
	Duplin	1	0.0	3	0.1	2	0.1
	Edgecombe	0	0.0	0	0.0	2	0.1
	Harnett	6	0.2	57	1.9	57	1.9
	Hertford	0	0.0	1	0.0	1	0.0
	Hoke	2	0.1	2	0.1	1	0.0
	Hyde	0	0.0	1	0.0	1	0.0
	Johnston	3	0.1	3	0.1	3	0.1
	Jones	1	0.0	0	0.0	0	0.0
	Lenoir	2	0.1	4	0.1	2	0.1
	Martin	1	0.0	0	0.0	0	0.0
	Nash	8	0.3	13	0.4	10	0.3
	New Hanover	42	1.5	33	1.1	36	1.2
	Onslow	10	0.3	10	0.3	13	0.4
	Pamlico	2	0.1	1	0.0	1	0.0
	Pasquotank	1	0.0	2	0.1	4	0.1
	Pender	2	0.1	2	0.1	5	0.2
	Perquimans	2	0.1	1	0.0	1	0.0
	Pitt	10	0.3	12	0.4	11	0.4
	Robeson	5	0.2	2	0.1	1	0.0
	Sampson	1	0.0	1	0.0	3	0.1
	Scotland	3	0.1	3	0.1	5	0.2
	Tyrrell	0	0.0	0	0.0	1	0.0
Washington	1	0.0	1	0.0	1	0.0	
Wayne	8	0.3	7	0.2	8	0.3	
Wilson	3	0.1	4	0.1	4	0.1	
Region Total	166	5.8	219	7.4	232	7.7	
Total		2,886	100.0	2,950	100.0	3,004	100.0

Table 13
Minority Presence: Fall Semesters

	International		Black		Asian		Native American		Hispanic		Other Minority		White		Unknown		All	
	N	%	N	%	N	%	N	%	N	%	N	%	N	%	N	%	N	
New Freshmen	1998	6	1.3	20	4.2	2	0.4	2	0.4	6	1.3	5	1.0	439	91.5	-	-	480
	1999	7	1.5	7	1.5	8	1.7	3	0.7	7	1.5	3	0.7	418	90.9	7	1.5	460
	2000	8	1.6	15	3.0	5	1.0	1	0.2	5	1.0	7	1.4	457	91.2	3	0.6	501
	2001	5	1.1	18	4.0	8	1.8	3	0.7	7	1.5	5	1.1	404	88.8	5	1.1	455
	2002	3	0.7	11	2.6	5	1.2	2	0.5	5	1.2	9	2.1	389	90.9	4	0.9	428
	2003	9	1.5	18	3.0	8	1.3	3	0.5	8	1.3	6	1.0	544	90.8	3	0.5	599
	2004	4	0.6	19	2.7	6	0.8	2	0.3	13	1.8	16	2.3	635	89.8	12	1.7	707
	2005	3	0.6	11	2.3	10	2.1	1	0.2	9	1.9	11	2.3	419	88.8	8	1.7	472
	2006	8	1.4	15	2.6	5	0.9	1	0.2	10	1.7	4	0.7	508	88.8	21	3.7	572
	2007	3	0.5	22	3.8	12	2.1	4	0.7	17	2.9	7	1.2	492	85.3	20	3.5	577
New Transfers	1998	5	1.5	6	1.8	3	0.9	2	0.6	6	1.8	1	0.3	298	91.4	5	1.5	326
	1999	2	0.7	7	2.4	3	1.0	1	0.3	8	2.8	1	0.3	258	90.2	6	2.1	286
	2000	5	1.7	5	1.7	4	1.3	3	1.0	2	0.7	5	1.7	278	92.1	-	-	302
	2001	4	1.2	4	1.2	3	0.9	-	-	4	1.2	5	1.5	310	93.1	3	0.9	333
	2002	2	0.5	9	2.4	7	1.8	1	0.3	5	1.3	5	1.3	347	90.8	6	1.6	382
	2003	5	1.6	9	3.0	5	1.6	-	-	8	2.6	8	2.6	266	87.5	3	1.0	304
	2004	4	1.8	4	1.8	2	0.9	-	-	8	3.5	5	2.2	202	89.0	2	0.9	227
	2005	1	0.3	6	2.1	4	1.4	2	0.7	7	2.4	6	2.1	260	90.3	2	0.7	288
	2006	1	0.3	11	3.6	-	-	2	0.7	4	1.3	5	1.6	271	88.9	11	3.6	305
	2007	2	0.7	4	1.4	6	2.1	1	0.3	8	2.8	4	1.4	252	87.8	10	3.5	287
All Students	1998	43	1.4	108	3.4	34	1.1	12	0.4	43	1.4	17	0.5	2,913	91.7	5	0.2	3,175
	1999	38	1.2	98	3.1	33	1.0	13	0.4	42	1.3	21	0.7	2,904	91.8	15	0.5	3,164
	2000	44	1.4	94	2.9	37	1.1	17	0.5	41	1.3	27	0.8	2,955	91.4	19	0.6	3,234
	2001	41	1.3	88	2.7	43	1.3	17	0.5	45	1.4	36	1.1	2,948	90.8	29	0.9	3,247
	2002	31	0.9	69	2.1	48	1.5	17	0.5	45	1.4	42	1.3	3,006	91.3	36	1.1	3,294
	2003	42	1.3	78	2.3	52	1.6	13	0.4	53	1.6	45	1.3	3,027	90.4	38	1.1	3,348
	2004	47	1.3	94	2.7	45	1.3	10	0.3	58	1.7	55	1.6	3,140	90.0	39	1.1	3,488
	2005	41	1.2	76	2.2	51	1.5	9	0.3	55	1.6	56	1.6	3,062	90.1	48	1.4	3,398
	2006	39	1.1	88	2.5	38	1.1	12	0.3	57	1.6	53	1.5	3,135	89.6	75	2.1	3,497
	2007	50	1.4	106	3.0	45	1.3	11	0.3	70	2.0	49	1.4	3,111	88.2	85	2.4	3,527

International Students are not included in other race/ethnicity categories.

Table 14
Distribution of Student Age by Class
Fall 2007

	N	Age Group Percent				Age			
		LT 25	25-29	30-39	40-Up	Median	Mean	Min	Max
New Freshmen	577	99.8	0.2	0.0	0.0	18.0	18.0	16	29
Other Freshmen	204	94.6	3.4	1.5	0.5	19.0	19.8	17	46
Sophomores	692	90.9	4.9	3.0	1.2	20.0	20.9	18	68
Juniors	780	81.8	7.9	7.6	2.7	21.0	23.0	17	59
Seniors	998	73.0	14.0	9.5	3.4	22.0	24.4	19	65
Non-Degree	239	31.4	25.9	22.6	20.1	28.0	31.9	15	88
Masters Candidates	23	4.3	17.4	21.7	56.5	47.0	43.7	24	63
Special Graduate	14	0.0	7.1	14.3	78.6	46.0	46.6	27	75
Total	3,527	80.6	8.8	6.8	3.9	21.0	22.8	15	88

Table 15
UNC System Undergraduate Student Demographic Comparisons
Fall 2006

Institution	Percent Full-Time	Mean Age	Pct Home & Contig. Co.	Percent Out-of-State
Appalachian State	87.2	21	13.3	8.7
East Carolina	76.4	22	23.4	13.0
Elizabeth City State	87.0	24	30.2	14.2
Fayetteville State	71.4	25	70.2	5.9
NC A & T	84.3	22	28.4	24.7
NC Central	67.6	24	52.5	12.5
NC School of the Arts	98.3	21	17.1	53.9
NC State	77.2	22	36.6	8.0
UNC Asheville	80.4	24	43.5	14.6
UNC Chapel Hill	82.7	21	13.6	17.4
UNC Charlotte	72.1	23	55.1	11.0
UNC Greensboro	73.5	23	44.2	8.2
UNC Pembroke	68.0	26	59.5	5.1
UNC Wilmington	84.9	22	26.5	14.4
Western Carolina	75.6	23	20.4	7.3
Winston-Salem	86.3	24	42.7	6.9
UNC Total	78.2	22	34.0	11.8

Source: *Statistical Abstract of Higher Education in North Carolina*

Table 16
Residence Halls and Number of Students Housed
Fall 2007

Residence Hall	Men	Women	Total
Ashe Hall		26	26
Founders Hall	113	172	285
Governors Hall	85	95	180
Hoey Hall	0	25	25
Mills Hall	121	172	293
Moore Hall	29		29
Scott Hall	24		24
South Ridge Hall	59	51	110
West Ridge Hall	50	91	141
Total On Campus	481	632	1,113

Table 17
Commuter vs Residence Hall Students
(Undergraduate Degree-Seeking Students)

Fall Semester	Total Enrollment	Commuter	Res Hall	Percent Res Hall
1994	2,731	1,786	945	34.6
1995	2,730	1,782	948	34.7
1996	2,657	1,711	946	35.6
1997	2,746	1,800	946	34.5
1998	2,769	1,806	963	34.8
1999	2,775	1,795	980	35.3
2000	2,818	1,804	1,014	36.0
2001	2,888	1,871	1,017	35.2
2002	2,974	1,991	983	33.1
2003	3,093	1,957	1,136	36.7
2004	3,246	1,969	1,277	39.3
2005	3,141	2,079	1,062	33.8
2006	3,239	2,180	1,059	32.7
2007	3,278	2,165	1,113	34.0

Table 18
Summer School Headcount Enrollment by Class: 10-Year Trend

	1998	1999	2000	2001	2002	2003	2004	2005	2006	2007
Freshman	43	44	47	42	37	55	50	43	24	42
Sophomore	130	114	126	110	108	111	139	116	119	102
Junior	275	195	185	200	221	239	222	211	193	185
Senior	345	287	302	300	270	282	322	289	319	342
Non-degree	85	64	68	35	46	36	59	64	54	53
Post-Bacc Certif	10	10	9	6	4	5	7	5	7	3
Post-Bacc Non-degree	4	3	5	5	3	1	5	2	0	6
Masters Candidate	12	3	4	10	7	1	6	4	1	0
Special Graduate	1	3	2	4	3	0	3	0	2	1
Teacher Certif	27	28	30	28	25	25	26	22	32	11
Visitor	118	94	78	90	102	79	113	88	89	80
Total	1,050	845	856	830	826	834	952	844	840	825

Table 19
Summer School Headcount, FTE, and SCH Enrollment: 10-Year Trend

Year	Head- count	FTE	SCH
1998	1,050	427	5,002
1999	845	339	3,990
2000	856	328	3,827
2001	830	327	3,825
2002	826	331	3,949
2003	834	344	4,165
2004	952	407	4,895
2005	844	346	5,200
2006	840	345	4,408
2007	825	350	4,185

Table 20
Distance Education Enrollments by Site

Site	2003-2004		2004-2005		2005-2006		2006-2007	
	Headct	SCH	Headct	SCH	Headct	SCH	Headct	SCH
AB Tech	14	44	1	4				
Asheville School	46	111	84	188	97	198	69	145
Avery-Mitchell Prison	67	201						
Buncombe County, Oth	90	175	80	148	101	231	230	470
Western Correctional Ctr	97	275	203	626	191	598	224	672
AY Total	314	806	368	966	389	1027	523	1287

Table 21
Distance Education SCH by Funding Category

		2001-2002	2002-2003	2003-2004	2004-2005	2005-06	2006-07
Category 1	Actual	243	567	592	789	633	719
	Fundable	174	314	295	313	336	413
	Budgeted	400	400	288	288	250	250
	Difference	-226	-86	7	25	86	163
Category 2	Actual	30	138	103	85	226	304
	Fundable	0	90	35	31	93	178
	Budgeted	72	72	164	164	70	70
	Difference	-72	18	-129	-133	23	108
Category 3	Actual	113	87	111	96	168	264
	Fundable	44	0	0	0	0	24
	Budgeted	188	188	0	0	0	0
	Difference	-144	-188	0	0	0	24
Total	Actual	386	792	806	970	1,027	1,287
	Fundable	218	404	330	344	429	615
	Budgeted	660	660	452	452	320	320
	Difference	-442	-256	-122	-108	109	295

Notes: Fundable SCH does not include SCH generated through contractual relationships with other institutions.
(e.g. Morganton Correctional Center)

Data are as of End of Term.

Table 22
Retention of New Fall Entering *Full-time* Freshmen
1997-2006

	Cohort		Years After Entry					
	Year	N	1	2	3	4	5	6
Retention Rate	1997	470	77.2	60.4	56.6	25.1	7.0	2.8
	1998	474	78.1	61.8	59.1	31.9	6.8	3.0
	1999	456	77.0	64.7	59.2	29.8	6.1	2.9
	2000	495	80.2	65.1	60.0	26.9	7.5	2.8
	2001	446	78.3	66.8	61.7	24.4	7.4	4.3
	2002	423	77.8	68.6	62.6	28.1	8.7	
	2003	593	79.9	68.0	63.2	33.6		
	2004	698	76.4	63.2	59.3			
	2005	471	80.7	70.1				
	2006	569	76.3					
Graduation Rate	1997	470	0.0	0.0	0.2	29.1	47.7	51.3
	1998	474	0.0	0.0	0.4	25.5	48.7	51.9
	1999	456	0.0	0.0	0.4	28.1	50.9	53.5
	2000	495	0.0	0.0	0.8	30.9	49.7	53.5
	2001	446	0.0	0.0	0.2	33.2	50.0	53.8
	2002	423	0.0	0.0	0.5	33.1	53.2	
	2003	593	0.0	0.0	0.7	28.7		
	2004	698	0.0	0.0	0.9			
	2005	471	0.0	0.0				
	2006	569	0.0					
Persistence Rate*	1997	470	77.2	60.4	56.8	54.0	54.5	54.0
	1998	474	78.1	61.8	59.5	57.4	55.5	54.9
	1999	456	77.0	64.7	59.6	57.9	56.8	56.4
	2000	495	80.2	65.1	60.8	57.8	57.2	56.4
	2001	446	78.3	66.8	61.9	57.6	57.4	58.1
	2002	423	77.8	68.6	63.1	61.2	61.9	
	2003	593	79.9	68.0	63.9	62.2		
	2004	698	76.4	63.2	60.2			
	2005	471	80.7	70.1				
	2006	569	76.3					

*Persistence rate is the percentage of students that are enrolled or graduated.

Table 23
Retention of New Fall Entering Transfers
1997-2006

	Cohort		Years After Entry					
	Year	N	1	2	3	4	5	6
Retention Rate	1997	310	72.9	54.8	26.8	12.6	6.8	3.9
	1998	326	68.4	45.7	20.9	9.5	4.6	2.1
	1999	286	67.5	50.3	25.9	10.1	5.9	1.7
	2000	302	66.9	54.0	25.5	11.9	2.6	1.7
	2001	333	71.8	55.6	21.6	10.5	4.2	1.8
	2002	382	68.6	52.9	26.7	8.9	3.7	
	2003	304	70.7	52.6	24.0	7.9		
	2004	227	73.1	53.7	18.5			
	2005	288	77.8	61.5				
2006	305	75.7						
Graduation Rate	1997	310	0.6	10.6	34.5	48.4	55.2	57.1
	1998	326	0.3	12.0	31.6	42.3	46.6	48.8
	1999	286	0.0	8.7	30.4	43.4	49.7	52.1
	2000	302	0.3	8.3	32.8	46.4	53.3	54.3
	2001	333	0.0	10.5	39.9	50.2	56.2	58.0
	2002	382	0.0	7.6	29.3	45.8	51.6	
	2003	304	0.3	9.5	35.5	50.0		
	2004	227	0.0	8.8	39.6			
	2005	288	0.0	9.0				
2006	305	0.0						
Persistence Rate*	1997	310	73.5	65.5	61.0	61.0	61.9	61.0
	1998	326	68.7	57.7	52.5	51.8	51.2	50.9
	1999	286	67.5	59.1	55.9	53.5	55.2	53.8
	2000	302	67.2	62.3	58.3	58.3	56.0	56.0
	2001	333	71.8	66.1	61.6	60.7	60.1	59.8
	2002	382	68.6	60.5	56.0	54.7	55.2	
	2003	304	71.1	62.2	59.5	57.9		
	2004	227	73.1	62.6	58.1			
	2005	288	77.8	70.5				
2006	305	75.7						

*Persistence rate is the percentage of students that are enrolled or graduated.

Table 24
Academic Program Inventory: Fall 2006

Discipline Division, CIP Code, Discipline Specialty, Degree Abbreviation, and Degree Program Title	
Natural Resources and Conservation	
03.0103	<i>Environmental Studies</i>
BS	Environmental Science/Studies
Women's Studies	
05.0207	<i>Women's Studies</i>
BA	Women's Studies
Communication, Journalism, and Related Programs	
09.0102	<i>Mass Communication/Media Studies</i>
BA	Journalism and Mass Communication
Computer & Information Sciences & Support Services	
11.0701	<i>Computer Science</i>
BS	Computer Science
11.0801	<i>Web Page, Digital/Multimedia & Information Resources Design</i>
BA	Multimedia Arts and Sciences
Engineering	
14.0101	<i>Engineering, General</i>
BS	Engineering (Joint w/UNCA & NCSU)
Foreign Languages, Literatures and Linguistics	
16.0501	<i>German Language and Literature</i>
BA	German
BA	German with Teacher Licensure
16.0901	<i>French Language and Literature</i>
BA	French
BA	French with Teacher Licensure
16.0905	<i>Spanish Language and Literature</i>
BA	Spanish
BA	Spanish with Teacher Licensure
16.1200	<i>Classics & Classical Languages, Literatures & Linguistics, Gen</i>
BA	Classics
BA	Classics with Teacher Licensure
English Language and Literatures/Letters	
23.0101	<i>English Language and Literature, General</i>
BA	English
BA	English with Teacher Licensure
Liberal Arts & Sciences, General Studies & Humanities	
24.0101	<i>Liberal Arts and Sciences/Liberal Studies</i>
BA	Interdisciplinary Studies
MA	Liberal Studies
Biological and Biomedical Sciences	
26.0101	<i>Biology/Biological Sciences, General</i>
BS	Biology
BS	Biology with Teacher Licensure
Mathematics and Statistics	
27.0101	<i>Mathematics, General</i>
BA	Mathematics
BA	Mathematics with Teacher Licensure
Philosophy and Religious Studies	
38.0101	<i>Philosophy</i>
BA	Philosophy
38.0201	<i>Religious Studies</i>
BA	Religious Studies
Physical Sciences	
40.0401	<i>Atmospheric Sciences and Meteorology, General</i>
BS	Atmospheric Science and Meteorology
40.0501	<i>Chemistry, General</i>
BA	Chemistry
BA	Chemistry with Teacher Licensure
BS	Chemistry
BS	Chemistry with Teacher Licensure
40.0801	<i>Physics, General</i>
BS	Physics
BS	Physics with Teacher Licensure
Psychology	
42.0101	<i>Psychology, General</i>
BA	Psychology
Social Sciences	
45.0601	<i>Economics, General</i>
BA	Economics
BA	Economics with Teacher Licensure in Social Studies
45.1001	<i>Political Science and Government, General</i>
BA	Political Science
BA	Political Science w/ Teacher Licensure in Social Studies
45.1101	<i>Sociology</i>
BA	Sociology
BA	Sociology with Teacher Licensure in Social Studies
Visual and Performing Arts	
50.0501	<i>Drama and Dramatics/Theater Arts, General</i>
BA	Drama
BA	Drama with Teacher Licensure
50.0701	<i>Art/Art Studies, General</i>
BA	Art
BA	Art with Teacher Licensure
50.0702	<i>Fine/Studio Arts, General</i>
BFA	Art
50.0901	<i>Music, General</i>
BA	Music
50.0999	<i>Music, Other</i>
BS	Music Technology
Health Professions & Related Sciences	
51.2207	<i>Public Health Education and Promotion</i>
BS	Health and Wellness Promotion
Business, Mgmt., Marketing & Related Support Services	
52.0201	<i>Business Administration and Management, General</i>
BS	Management
52.0205	<i>Operations Management and Supervision</i>
BS	Industrial and Engineering Management
52.0301	<i>Accounting</i>
BS	Accounting
History	
54.0101	<i>History, General</i>
BA	History
BA	History with Teacher Licensure in Social Studies

Table 25
Enrollment by Major
Degree Seeking Undergraduates - Spring Semester

Major	2003	2004	2005	2006	2007	5-Year % Change
Accounting	71	74	68	53	56	-21.1
Art	75	87	112	128	134	78.7
Atmospheric Sciences	46	35	39	44	52	13.0
Biology	82	96	101	107	109	32.9
Chemistry	34	33	43	44	34	0.0
Classics	16	24	23	19	18	12.5
Computer Science	78	55	60	49	28	-64.1
Drama	28	29	25	37	41	46.4
Economics	45	36	36	45	46	2.2
Education	62	67	65	61	83	33.9
Environmental Studies	136	128	108	129	134	-1.5
French	11	10	18	20	18	63.6
German	8	15	11	10	9	12.5
Health & Wellness Promotion				46	81	
History	99	104	82	88	93	-6.1
Industrial Engineering Mgmt	5	10	10	7	7	40
Interdisciplinary Studies	37	52	49	39	27	-27.0
Literature	105	122	142	142	154	46.7
Management	157	147	145	156	124	-21.0
Mass Communication	74	96	87	88	84	13.5
Mathematics	48	59	69	83	80	66.7
Mechatronics	28	24	28	30	19	-32.1
Multimedia Arts & Sciences	81	61	59	70	71	-12.3
Music	17	23	20	19	14	-17.6
Music Technology	26	20	24	21	19	-26.9
Philosophy	22	30	30	36	39	77.3
Physics	10	13	15	19	19	90.0
Political Science	49	54	58	68	71	44.9
Psychology	161	179	183	181	194	20.5
Sociology	55	54	56	64	80	45.5
Spanish	38	48	43	60	64	68.4
Women's Studies				10	8	

NOTE: Degree-seeking students *formally* admitted to the teacher licensure program are double counted in "Education" and their primary major.
Students with double majors are counted in each major.

Table 26
Degrees Conferred by Academic Area and Major

Academic Area	Major	2002-03		2003-04		2004-05		2005-06		2006-07	
		N	%	N	%	N	%	N	%	N	%
Social Sciences	Accounting	15	2.6	18	3.0	13	2.3	17	3.0	16	2.7
	Economics	16	2.8	18	3.0	12	2.1	9	1.6	15	2.6
	Health/Wellness Promotion							1	0.2	7	1.2
	Industrial Engr Mgmt	1	0.2	3	0.5	4	0.7	3	0.5		
	Management	50	8.7	56	9.4	63	11.0	37	6.6	58	10.0
	Mass Communication	25	4.3	47	7.9	42	7.3	32	5.7	38	6.5
	Political Sci	26	4.5	21	3.5	13	2.3	19	3.4	29	5.0
	Psychology	85	14.8	78	13.1	76	13.2	87	15.5	95	16.3
	Sociology	32	5.6	39	6.5	19	3.3	30	5.3	26	4.5
	Program Total	250	43.4	280	47.0	242	42.1	235	41.7	284	48.8
Natural Sciences	Atmospheric Science	20	3.5	9	1.5	18	3.1	7	1.2	14	2.4
	Biology	27	4.7	23	3.9	33	5.7	31	5.5	31	5.3
	Chemistry	17	3.0	6	1.0	5	0.9	9	1.6	11	1.9
	Computer Science	33	5.7	18	3.0	26	4.5	11	2.0	19	3.3
	Environmental Studies	48	8.3	51	8.6	39	6.8	38	6.7	25	4.3
	Mathematics	21	3.6	9	1.5	20	3.5	22	3.9	24	4.1
	Multimedia	33	5.7	33	5.5	26	4.5	21	3.7	17	2.9
	Physics	3	0.5	3	0.5	4	0.7	5	0.9	2	0.3
	Program Total	202	35.1	152	25.5	171	29.7	144	25.6	143	24.6
Humanities	Art	22	3.8	21	3.5	20	3.5	44	7.8	35	6.0
	Classics	2	0.3	5	0.8	4	0.7	9	1.6	2	0.3
	Drama	8	1.4	11	1.8	14	2.4	4	0.7	10	1.7
	French	5	0.9	5	0.8	2	0.3	6	1.1	6	1.0
	German	1	0.2	3	0.5	4	0.7	6	1.1	4	0.7
	History	20	3.5	45	7.6	27	4.7	27	4.8	20	3.4
	Literature	32	5.6	27	4.5	49	8.5	42	7.5	52	8.9
	Music	3	0.5	8	1.3	9	1.6	6	1.1	11	1.9
	Music Technology	16	2.8	6	1.0	10	1.7	11	2.0	6	1.0
	Philosophy	10	1.7	5	0.8	8	1.4	10	1.8	9	1.5
	Spanish	12	2.1	29	4.9	17	3.0	16	2.8	17	2.9
Program Total	131	22.7	165	27.7	164	28.5	181	32.1	172	29.6	
Interdisciplinary	Interdisciplinary Studies	17	3.0	21	3.5	21	3.7	22	3.9	16	2.7
	Women's Studies							2	0.4	4	0.7
	Program Total	17	3.0	21	3.5	21	3.7	24	4.3	20	3.4
Graduate	Liberal Arts (MLA)	5	0.9	7	1.2	1	0.2	4	0.7	3	0.5
	University Total	576	100.0	596	100.0	575	100.0	563	100.0	582	100.0

Table 27
Average Undergraduate Class Size
(Fall Semesters)

	2003	2004	2005	2006	2007
Africana Studies			15.0	6.0	7.0
Art	13.9	14.8	15.5	15.1	15.8
Arts 310	22.8	20.9	22.2	17.0	17.6
Atmospheric Sciences	20.8	20.4	19.6	18.8	18.2
Biology	30.5	30.7	22.9	24.1	24.3
Chemistry	20.7	22.0	19.1	19.1	19.2
Classics	11.4	13.9	12.0	14.2	13.9
Computer Science	18.8	16.0	14.2	13.3	13.1
Drama	13.1	14.5	15.6	15.1	13.1
Economics	20.0	18.0	19.8	19.5	20.4
Education	13.3	16.9	18.6	13.9	17.1
Engineering	14.6	11.7	15.6	13.1	13.9
Environmental Studies	25.9	22.6	23.9	27.0	23.8
First-Year Experience	16.9				
Foreign Languages	21.5	18.7	17.2	17.0	17.0
Health & Fitness	21.1	19.5	16.1	18.7	22.2
Health & Wellness			19.2	21.3	20.7
History	21.4	20.1	21.3	22.6	21.7
Honors Program	15.8	12.6	12.7	12.9	15.3
Humanities	20.1	20.1	19.7	19.7	20.9
Interdisciplinary Studies	15.7	17.8	18.3	16.5	11.0
International Studies	19.0		15.0	14.5	18.5
Liberal Studies			14.7	12.6	16.8
Literature	21.1	19.9	19.8	19.5	19.0
Management	17.9	16.9	18.2	18.2	17.5
Mass Communication	19.6	19.7	20.0	17.8	18.2
Mathematics	24.9	23.8	24.2	24.5	23.8
Multimedia Arts and Sciences	11.2	11.2	12.4	13.6	12.5
Music	11.8	14.7	13.0	13.4	15.2
Philosophy	18.3	21.0	20.2	16.6	22.4
Physics	32.0	42.1	29.5	30.6	31.9
Political Science	21.4	19.4	19.1	20.7	22.6
Psychology	25.8	24.7	24.7	24.7	24.3
Sociology	23.8	22.3	22.3	21.7	21.7
Women's Studies	16.0	17.5	18.0	17.0	18.0
Total University	19.8	19.6	19.2	19.0	19.4

Table 28
Grade Distribution by Course Level and Academic Year

Level	Acad Year Ending	N Grades	Weighted GPA	Grade										
				A %	A- %	B+ %	B %	B- %	C+ %	C %	C- %	D+ %	D %	F %
100	1998	8,546	2.70	32.3			34.1				20.9		5.4	7.3
	1999	8,927	2.77	34.0			35.1			19.2		5.3	6.4	
	2000	8,977	2.79	34.7			35.5			18.1		4.5	7.2	
	2001	9,161	2.77	34.4			34.8			18.9		5.3	6.6	
	2002	9,259	2.86	38.8			33.3			17.5		4.7	5.8	
	2003	9,324	2.81	30.7	7.4	6.4	22.0	4.5	3.7	11.7	1.7	0.4	4.0	7.5
	2004	10,254	2.82	27.0	9.4	7.6	21.3	6.2	4.3	10.8	2.2	0.7	4.0	6.4
	2005	10,850	2.85	27.4	10.1	8.4	19.8	6.6	4.1	10.2	2.8	0.7	3.6	6.2
	2006	9,403	2.93	29.5	10.8	8.6	19.0	6.6	4.4	9.1	2.7	0.7	3.6	4.9
2007	10,165	2.86	27.2	11.1	8.2	18.9	7.0	4.5	9.5	2.9	0.8	4.0	6.0	
200	1998	4,604	2.77	31.1			35.5			21.1		5.6	6.8	
	1999	4,356	2.81	32.0			37.6			18.4		5.7	6.3	
	2000	4,218	2.85	32.9			37.6			19.2		4.6	5.6	
	2001	4,347	2.84	33.4			36.5			18.9		5.1	6.1	
	2002	4,366	2.97	38.3			36.3			16.7		4.4	4.3	
	2003	4,636	2.95	30.1	9.2	7.7	22.3	4.7	3.6	11.3	1.8	0.3	3.6	5.3
	2004	4,678	2.96	29.6	11.0	8.6	20.8	5.2	3.8	9.4	2.0	0.5	3.6	5.7
	2005	4,650	2.99	29.6	11.3	8.8	21.3	5.2	3.9	9.3	2.3	0.5	3.2	4.6
	2006	5,152	3.03	31.0	11.9	8.8	18.7	6.7	4.0	8.8	2.1	0.9	2.9	4.3
2007	5,114	2.96	28.4	12.1	10.2	17.6	6.6	3.8	8.8	2.6	0.8	3.9	5.2	
300	1998	6,057	3.01	39.5			36.5			16.6		2.9	4.3	
	1999	6,795	3.05	42.6			35.6			14.7		2.8	4.3	
	2000	7,108	3.10	43.2			36.5			14.2		2.3	3.9	
	2001	7,036	3.10	42.6			37.5			14.0		2.3	3.6	
	2002	7,698	3.16	46.6			35.0			12.5		2.1	3.7	
	2003	7,908	3.15	37.5	9.6	8.0	22.0	4.9	2.6	8.3	1.5	0.3	2.0	3.4
	2004	8,007	3.20	39.4	10.6	7.9	21.7	4.0	2.6	7.2	1.4	0.3	1.8	3.2
	2005	8,163	3.23	39.4	11.5	8.4	20.3	4.9	2.6	6.7	1.0	0.3	1.8	3.1
	2006	8,952	3.22	37.1	13.6	9.5	19.0	5.0	3.0	5.9	1.7	0.3	1.5	3.4
2007	9,226	3.18	32.7	15.2	10.8	18.0	6.5	3.3	5.9	1.7	0.4	2.0	3.4	
400	1998	2,153	3.16	45.8			34.7			14.2		2.2	3.1	
	1999	2,187	3.21	47.1			35.5			12.8		1.4	3.2	
	2000	2,171	3.27	50.1			33.5			12.6		1.6	2.2	
	2001	2,070	3.28	51.7			32.8			11.5		1.3	2.8	
	2002	2,343	3.27	50.8			33.3			11.5		2.1	2.2	
	2003	2,549	3.27	41.9	11.5	8.2	19.4	4.1	2.2	6.9	1.1	0.3	1.0	3.4
	2004	2,762	3.32	43.8	10.9	8.4	19.0	4.7	2.3	6.2	1.1	0.1	1.2	2.3
	2005	2,749	3.34	45.7	9.9	8.4	17.6	4.4	3.0	6.6	0.8	0.0	1.5	2.1
	2006	2,711	3.31	43.8	13.1	7.5	16.5	4.6	2.1	6.4	1.1	0.1	1.5	3.2
2007	2,693	3.34	43.1	14.2	7.9	16.2	4.3	3.2	6.1	1.4	0.3	1.3	2.0	
500+	1998	92	3.49	65.2			27.2			3.3			4.3	
	1999	93	3.58	64.5			31.2			3.2			1.1	
	2000	86	3.47	58.1			36.0			2.3		1.2	2.3	
	2001	70	3.54	65.7			27.1			4.3		1.4	1.4	
	2002	73	3.55	65.8			30.1			1.4			2.7	
	2003	72	3.42	54.2	6.9	12.5	15.3	1.4	2.8	1.4			5.6	
	2004	83	3.52	56.6	14.5	9.6	9.6	3.6	1.2				4.8	
	2005	97	3.50	54.6	17.5	9.3	10.3	1.0		2.1			5.2	
	2006	89	3.46	49.4	16.9	7.9	13.5	5.6	2.2				4.5	
2007	57	3.51	47.4	19.3	5.3	15.8	5.3	3.5				1.8		
All	1998	21,452	2.85	35.6			35.1			19.0		4.4	5.9	
	1999	22,358	2.91	37.6			35.8			17.0		4.2	5.4	
	2000	22,560	2.94	38.6			36.0			16.5		3.5	5.3	
	2001	22,684	2.93	38.4			35.8			16.6		4.0	5.2	
	2002	23,739	3.02	42.5			34.4			15.1		3.5	4.5	
	2003	24,489	2.99	34.0	8.9	7.4	21.8	4.6	3.2	10.0	1.6	0.4	2.9	5.3
	2004	25,784	3.02	33.2	10.2	8.0	21.1	5.2	3.5	8.9	1.8	0.4	2.9	4.8
	2005	26,509	3.04	33.5	10.7	8.5	20.0	5.6	3.5	8.6	1.9	0.5	2.7	4.5
	2006	26,307	3.08	33.9	12.2	8.8	18.7	5.9	3.6	7.7	2.1	0.5	2.5	4.1
2007	27,255	3.03	30.9	13.0	9.4	18.1	6.5	3.8	7.8	2.3	0.6	3.0	4.6	

Figure 5
Weighted GPA by Academic Year and Course Level

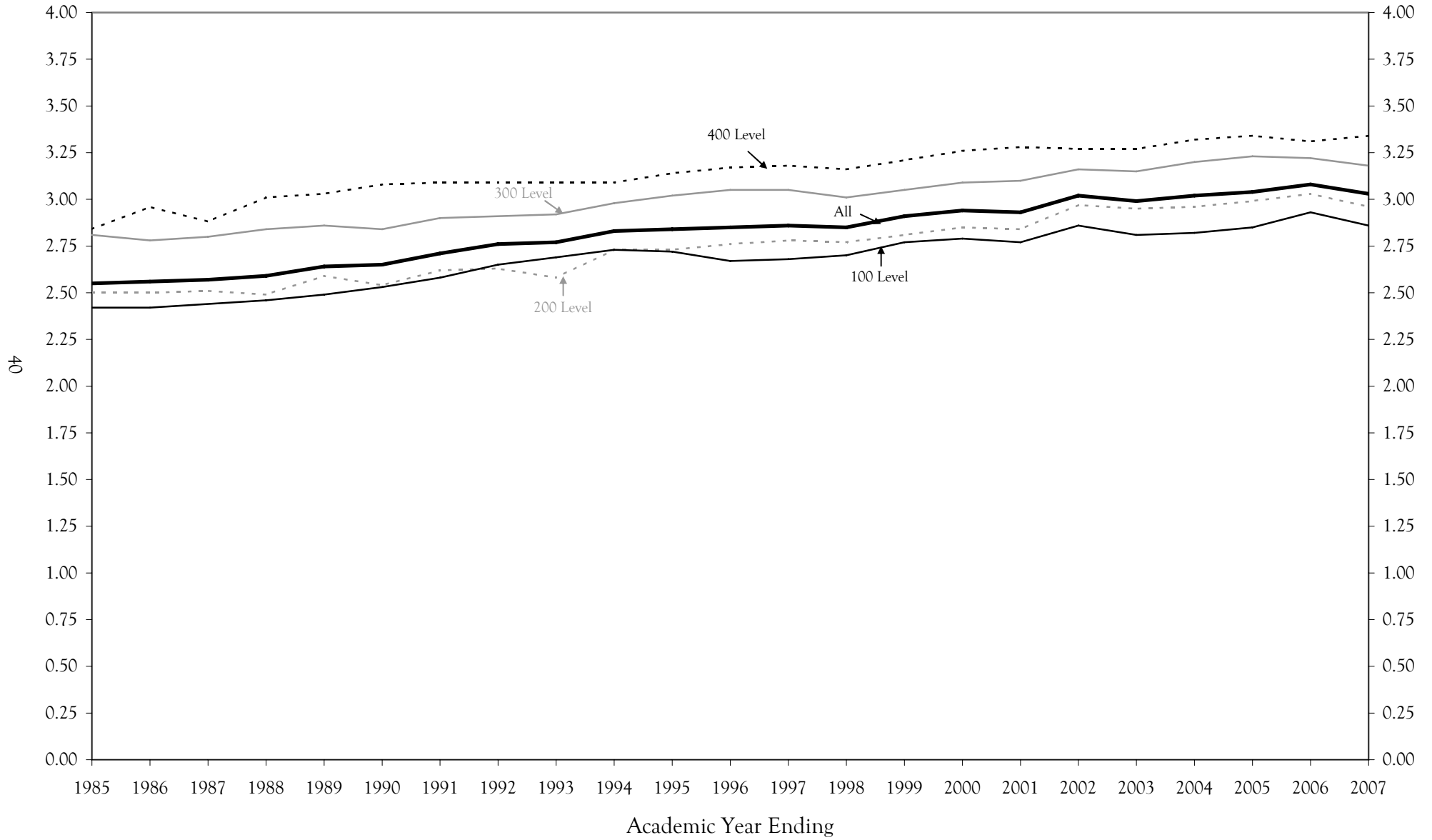


Table 29
Intercollegiate Athletics
Fall 2007

Teams	Men	Women	Last Champ.	Last Record		
				W	L	T
Baseball	31		2006	22	38	
Basketball Men	15		2003	12	19	
Basketball Women		13	2007	21	12	
Soccer Men	21		2001	4	12	1
Soccer Women		22	2006	14	12	2
Tennis Men	4		1986	5	10	0
Tennis Women		6	1989	3	15	0
Volleyball		12	2002	12	19	
Track Men	22			7th in Big South		
Track Women		20		5th in Big South		
Cross Country Men	12			7th in Big South		
Cross Country Women		16	1999	6th in Big South		

Athletic Facilities	Seats
Justice Center Gym (Basketball)	1,100
Greenwood Field (Soccer)	1,000
Greenwood Field (Baseball)	1,000

National Collegiate Athletic Association Information

NCAA Division I
Big South Conference
Nickname: Bulldogs
Colors: Royal Blue and White

Big South Conference Members

1. UNC Asheville
2. Charleston Southern University
3. Coastal Carolina University
4. Winthrop University
5. Radford University
6. Liberty University
7. Virginia Military Institute
8. High Point University
9. Presbyterian College

Source: UNC Asheville Athletics

Table 30

Asheville Graduate Center
Participating Universities and Program Offerings

Appalachian State University

Master of Arts in Educational Media, Instructional Technology/Computers
Master of Library Science General, Concentration in School Libraries
Graduate Certificate in Community and Regional Planning

North Carolina State University

Master of Engineering (various concentrations)
Master of Civil Engineering
Master of Science in Mechanical Engineering
Master of Science in Aerospace Engineering
Master of Science in Chemical Engineering
Master of Computer Science

University of North Carolina at Asheville

Master of Liberal Arts

University of North Carolina at Chapel Hill

Master of Social Work

University of North Carolina at Greensboro

Master of Library and Information Studies

Western Carolina University

- Master of Accountancy
- Master of Arts in English
TESOL (Teaching English to Speakers of Other Languages)
- Master of Arts in Education
Comprehensive Education (7 concentrations)
School Counseling
Two-Year College Teaching
- Master of Arts in Teaching
Comprehensive Education (5 concentrations)
- Master of Education
College of Student Personnel
- Master of Business Administration
- Master of Health Sciences (MAHEC)
- Master of Public Affairs
- Master of Science
Community Counseling
Mathematics (Applied)
Technology (AB Tech)
- Master of Science in Nursing (Enka)
- Education Specialist
Educational Leadership
- Doctor of Education
Educational Leadership

Table 31

Asheville Graduate Center Fall Headcount Enrollments

School	1998	1999	2000	2001	2002	2003	2004	2005	2006	2007
NCSU	42	28	28	37	10	12	11	8		
UNCA - MLA	40	38	47	36	40	36	35	37	26	37
UNC CH	41	24	19	23	20	21	18	18	16	17
UNC G	31	29	31	31	30	37	20	7	15	14
ASU										22
WCU	556	569	581	706	728	815	771	593	521	468
Total	710	688	706	833	828	921	855	663	578	558

Table 32
Summer Conferences

	1999	2000	2001	2002	2003	2004	2005	2006	2007
No. of Conferences	32	29	28	30	34	27	31	28	34
No. of Participants	2,532	3,083	2,842	2,406	3,796	3,010	2,945	1,659	2,502
No. of Dorm Beds	6,432	7,938	7,727	8,369	11,641	10,839	9,264	8,386	10,079

Source: Conferences & Institutes

Table 33
Continuing Education Enrollments

	1999	2000	2001	2002	2003	2004	2005	2006	2007
Non-Credit & Professional Educ.	680	606	469	341	487	545	267	227	203
Super Saturday	1,194	1,165	1,199	1,385	1,525	1,399	1,211	1,406	1,181
NC Center for Creative Retirement*	N/A	1,965	2,039	2,179	1,984	2,399	2,225	2,920	3,012

* Includes Leadership Asheville Seniors, Leadership Training for Older Persons, Blue Ridge Naturalist, Creative Retirement Exploration Weekend and other programs

Source: Extension & Distance Education, Education Super Saturday, & Center for Creative Retirement

Table 34

Student Financial Aid by Source
Three-Year Trend

	2004-2005		2005-2006		2006-2007	
	Awards	Amount	Awards	Amount	Awards	Amount
Federal Funds						
Academic Competitiveness Grant	0	0	0	0	83	61,600
FDLP - PLUS	191	1,286,566	167	1,183,247	184	1,457,360
FDLP - Unsubsidized Stafford	786	2,723,508	840	2,922,483	877	3,095,745
FDLP - Subsidized Stafford	1,139	3,988,964	1,086	3,880,045	1,074	3,900,351
Federal Pell Grant	815	2,142,183	767	1,972,137	781	2,006,670
Federal Perkins Loan	74	229,292	114	375,093	55	185,393
Fed. Supplemental Ed. Opportunity Grant (SEOG)	128	65,786	153	80,009	137	84,150
Federal Veteran Educational Benefits	67	166,932	78	188,583	64	134,805
Federal Work Study (FWS)	79	149,554	76	136,317	70	90,840
Other Federal Scholarship or Grant	15	29,323	15	35,055	4	3,245
Smart Grant	0	0	0	0	27	86,000
Workforce Investment Act (WIA)	6	22,337	1	2,480	0	0
Sub-total	3,300	10,804,446	3,297	10,775,449	3,356	11,106,159
State Funds						
Escheats	51	16,800	54	16,000	56	18,461
NC Division of Vocational Rehabilitation	30	71,622	21	48,056	7	8,544
NC Scholarships for HSM (Forgivable loan)	6	10,188	9	14,235	13	27,150
NC Stud. Incent. Grant (Includes State Match)	47	31,379	62	41,300	47	30,100
NC Teaching Fellows Program (Forgivable loan)	53	315,522	60	342,800	64	372,100
Nurse Scholars Program (Forgivable loan)	3	15,000	1	5,000	1	5,000
Other North Carolina Scholarship or Grant	491	248,215	508	287,458	479	303,874
Prospective Tchr. Scholarship Loan (Forgivable loan)	10	22,500	9	21,250	11	27,500
Teaching Assistant Scholarship Fund	1	3,200	0	0	0	0
UNC Campus Scholarship Program	2	5,121	4	4,445	0	0
UNC Need Based Grant	636	901,603	608	997,333	681	1,269,009
Sub-total	1,330	1,641,150	1,336	1,777,876	1,359	2,061,738
Other Funds						
Alternative Loan	58	425,961	91	674,393	0	0
Athletic Grant-in-Aid	149	844,175	197	851,852	219	905,080
Extern. Admin. Pvt. Grant./Schlrshp. (Non-Athletic)	325	411,961	277	392,171	0	0
Institutional Grant/Scholarship (Need Based)	1,012	694,493	1,062	722,261	1,118	1,506,932
Institutional Grant/Scholarship (Non-Need Based)	324	492,718	284	419,379	285	388,077
Institutionally-funded Tuition Waivers	17	14,428	1	834	15	12,510
Sub-total	1,885	2,883,735	1,912	3,060,890	1,637	2,812,599
Total	6,515	15,329,331	6,545	15,614,215	6,352	15,980,497

* Not all dollars under Other Funds are awarded by the Office of Financial Aid.

Table 35

Students Receiving Financial Aid

Fall	N	Financial Aid			Percent of Students Receiving				Average	Avg Pct of	
		Apps	Offers	Awards	Loans	Grants	Scholarships	Aid Total	Award	Need Met	
2005	New Freshmen	472	339	293	293	37.1	48.3	13.3	62.1	5,707	79.1
	New Transfers	288	200	189	192	56.6	49.7	5.9	66.7	8,688	78.1
	New Non-Degree	97	19	15	15	11.3	7.2	1.0	15.5	4,698	50.7
	New Graduates	15	4	1	1	6.7	0.0	0.0	6.7	3,545	50.0
	Returning	138	65	52	52	29.7	27.5	2.9	37.7	6,499	71.5
	Continuing	2,388	1,422	1,356	1,364	40.5	43.2	11.3	57.1	7,574	79.2
	Total	3,398	2,049	1,906	1,917	40.0	42.6	10.5	56.4	7,317	78.5
2006	New Freshmen	572	388	346	346	39.5	42.5	12.8	60.5	6,351	83.2
	New Transfers	305	214	201	205	53.4	54.8	4.6	67.2	8,453	80.7
	New Non-Degree	115	24	23	23	19.1	5.2	1.7	20.0	6,823	76.8
	New Graduates	1	0	0	0	0.0	0.0	0.0	0.0		
	Returning	131	38	35	36	22.1	19.1	1.5	27.5	8,377	81.0
	Continuing	2,373	1,319	1,258	1,275	39.1	36.7	12.3	53.7	7,948	84.3
	Total	3,497	1,983	1,863	1,885	39.1	37.5	10.9	53.9	7,685	83.5
2007	New Freshmen	577	403	355	355	39.9	43.5	13.2	61.5	6,551	81.8
	New Transfers	287	192	189	189	51.6	54.0	2.8	65.9	8,517	80.2
	New Non-Degree	91	23	21	21	20.9	3.3	0.0	23.1	7,149	79.2
	New Graduates	14	3	1	1	7.1	0.0	0.0	7.1	3,500	89.6
	Returning	129	40	36	36	23.3	18.6	1.6	27.9	7,319	77.6
	Continuing	2,429	1,360	1,328	1,328	39.8	39.5	11.9	54.7	8,389	84.6
	Total	3,527	2,021	1,930	1,930	39.6	39.5	10.6	54.7	7,992	83.4

Table 36
Intercollegiate Athletics Grants-In-Aid
2006-2007

	Male	Female	Total
Athl Dir 3.0 Club	6,150	6,000	12,150
Athletic Training Rooms	0	400	400
Baseball	60,078	0	60,078
Basketball	159,071	158,067	317,138
Soccer	61,000	73,000	134,000
Tennis	28,838	11,585	40,423
Track	32,500	25,500	58,000
Volleyball	0	63,306	63,306
Total	347,637	337,858	685,495

Table 37
Current Residence of Alumni by US Region, State and Nation

		2007	
		N	%
The South	Alabama	66	0.5
	Arkansas	22	0.2
	Florida	440	3.6
	Georgia	441	3.6
	Kentucky	39	0.3
	Louisiana	26	0.2
	Mississippi	21	0.2
	North Carolina	8,397	68.8
	South Carolina	435	3.6
	Tennessee	271	2.2
	Virginia	319	2.6
	West Virginia	23	0.2
	Region Total	10,500	86.0
Mid-Atlantic	Delaware	13	0.1
	District of Columbia	30	0.2
	Maryland	122	1.0
	New Jersey	52	0.4
	New York	146	1.2
	Pennsylvania	86	0.7
	Region Total	449	3.7
New England	Connecticut	25	0.2
	Maine	16	0.1
	Massachusetts	64	0.5
	New Hampshire	15	0.1
	Rhode Island	6	0.0
	Vermont	8	0.1
Region Total	134	1.1	
Midwest	Illinois	93	0.8
	Indiana	41	0.3
	Iowa	7	0.1
	Kansas	10	0.1
	Michigan	39	0.3
	Minnesota	32	0.3
	Missouri	28	0.2
	Nebraska	3	0.0
	North Dakota	1	0.0
	Ohio	72	0.6
	South Dakota	8	0.1
	Wisconsin	38	0.3
	Region Total	372	3.0
The Southwest	Arizona	45	0.4
	New Mexico	17	0.1
	Oklahoma	15	0.1
	Texas	144	1.2
	Region Total	221	1.8

Table 37
Current Residence of Alumni by US Region, State and Nation

		2007	
		N	%
The West	Alaska	11	0.1
	California	171	1.4
	Colorado	101	0.8
	Hawaii	16	0.1
	Idaho	5	0.0
	Montana	16	0.1
	Nevada	13	0.1
	Oregon	57	0.5
	Utah	11	0.1
	Washington	68	0.6
	Wyoming	9	0.1
	Region Total	478	3.9
Territories	Puerto Rico	4	0.0
	Virgin Islands	3	0.0
	Region Total	7	0.1
International	Australia	3	0.0
	Canada	3	0.0
	Costa Rica	1	0.0
	Croatia	1	0.0
	Cyprus	1	0.0
	Ecuador	1	0.0
	Egypt	3	0.0
	France	1	0.0
	Indonesia	1	0.0
	Jamaica	1	0.0
	Japan	7	0.1
	Kenya	1	0.0
	Kuwait	1	0.0
	Malaysia	1	0.0
	Netherlands	1	0.0
	New Zealand	3	0.0
	Peru	1	0.0
	Singapore	1	0.0
	Spain	2	0.0
	Sweden	1	0.0
	The Bahamas	1	0.0
	Turkey	3	0.0
	United Arab Emirates	1	0.0
	United Kingdom	5	0.0
	West Germany	2	0.0
	Zambia	1	0.0
	Region Total	48	0.4
	Total		12,209

Table 38
Alumni by North Carolina Region and County

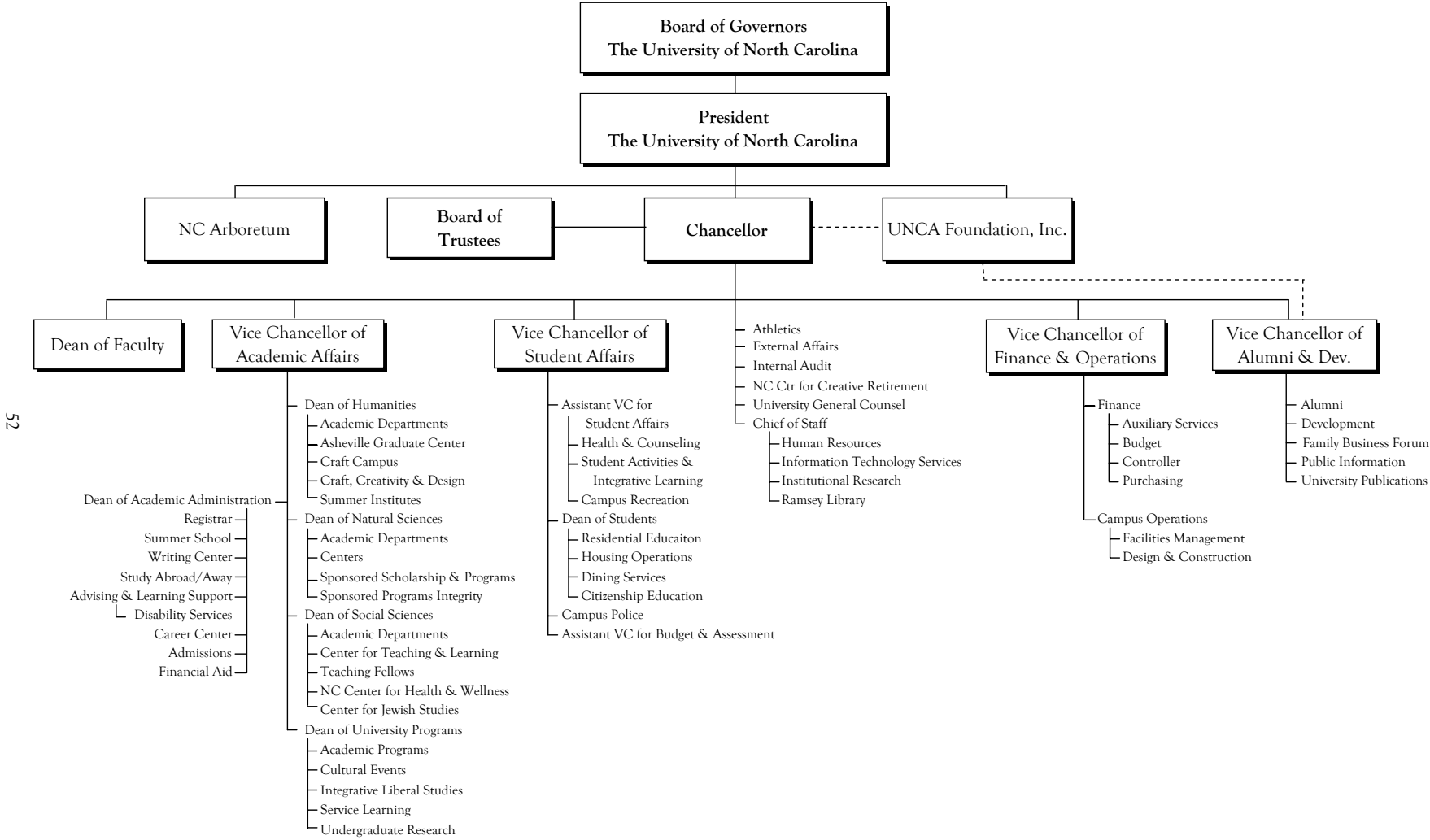
		2007	
		N	%
Western NC	Alleghany	4	0.0
	Ashe	10	0.1
	Avery	11	0.1
	Buncombe	3,706	44.1
	Burke	95	1.1
	Caldwell	47	0.6
	Cherokee	51	0.6
	Clay	21	0.3
	Graham	7	0.1
	Haywood	209	2.5
	Henderson	863	10.3
	Jackson	58	0.7
	Macon	43	0.5
	Madison	127	1.5
	McDowell	162	1.9
	Mitchell	43	0.5
	Polk	87	1.0
	Rutherford	108	1.3
	Surry	20	0.2
	Swain	19	0.2
Transylvania	149	1.8	
Watauga	34	0.4	
Wilkes	22	0.3	
Yancey	81	1.0	
	Region Total	5,977	71.2
Piedmont NC	Alamance	26	0.3
	Alexander	16	0.2
	Anson	3	0.0
	Cabarrus	49	0.6
	Caswell	4	0.0
	Catawba	80	1.0
	Chatham	24	0.3
	Cleveland	60	0.7
	Davidson	33	0.4
	Davie	15	0.2
	Durham	132	1.6
	Forsyth	206	2.5
	Franklin	8	0.1
	Gaston	74	0.9
	Granville	7	0.1
	Guilford	189	2.3
	Iredell	52	0.6
	Lee	9	0.1
	Lincoln	33	0.4
	Mecklenburg	391	4.7
	Montgomery	4	0.0
	Moore	21	0.3
	Orange	119	1.4
	Person	3	0.0
Randolph	12	0.1	
Richmond	5	0.1	

Table 38
Alumni by North Carolina Region and County

		2007	
		N	%
	Rockingham	17	0.2
	Rowan	36	0.4
	Stanly	9	0.1
	Stokes	6	0.1
	Union	87	1.0
	Vance	2	0.0
	Wake	323	3.8
	Yadkin	8	0.1
	Region Total	2,063	24.6
Eastern NC	Beaufort	5	0.1
	Bladen	1	0.0
	Brunswick	15	0.2
	Carteret	14	0.2
	Columbus	1	0.0
	Craven	11	0.1
	Cumberland	24	0.3
	Currituck	4	0.0
	Dare	4	0.0
	Duplin	4	0.0
	Edgecombe	2	0.0
	Greene	1	0.0
	Halifax	2	0.0
	Harnett	99	1.2
	Hoke	2	0.0
	Hyde	1	0.0
	Johnston	14	0.2
	Jones	1	0.0
	Lenoir	2	0.0
	Nash	4	0.0
	New Hanover	69	0.8
	Onslow	12	0.1
	Pamlico	2	0.0
	Pasquotank	1	0.0
	Pender	6	0.1
	Perquimans	1	0.0
	Pitt	30	0.4
	Robeson	3	0.0
	Sampson	2	0.0
	Scotland	2	0.0
	Washington	2	0.0
	Wayne	8	0.1
	Wilson	8	0.1
	Region Total	357	4.3
Total		8,397	100.0

Faculty and Staff

Figure 6
UNCA Organizational Chart: 2007-08



52

Figure 7
Organizational Chart for Academic Affairs: 2007-08

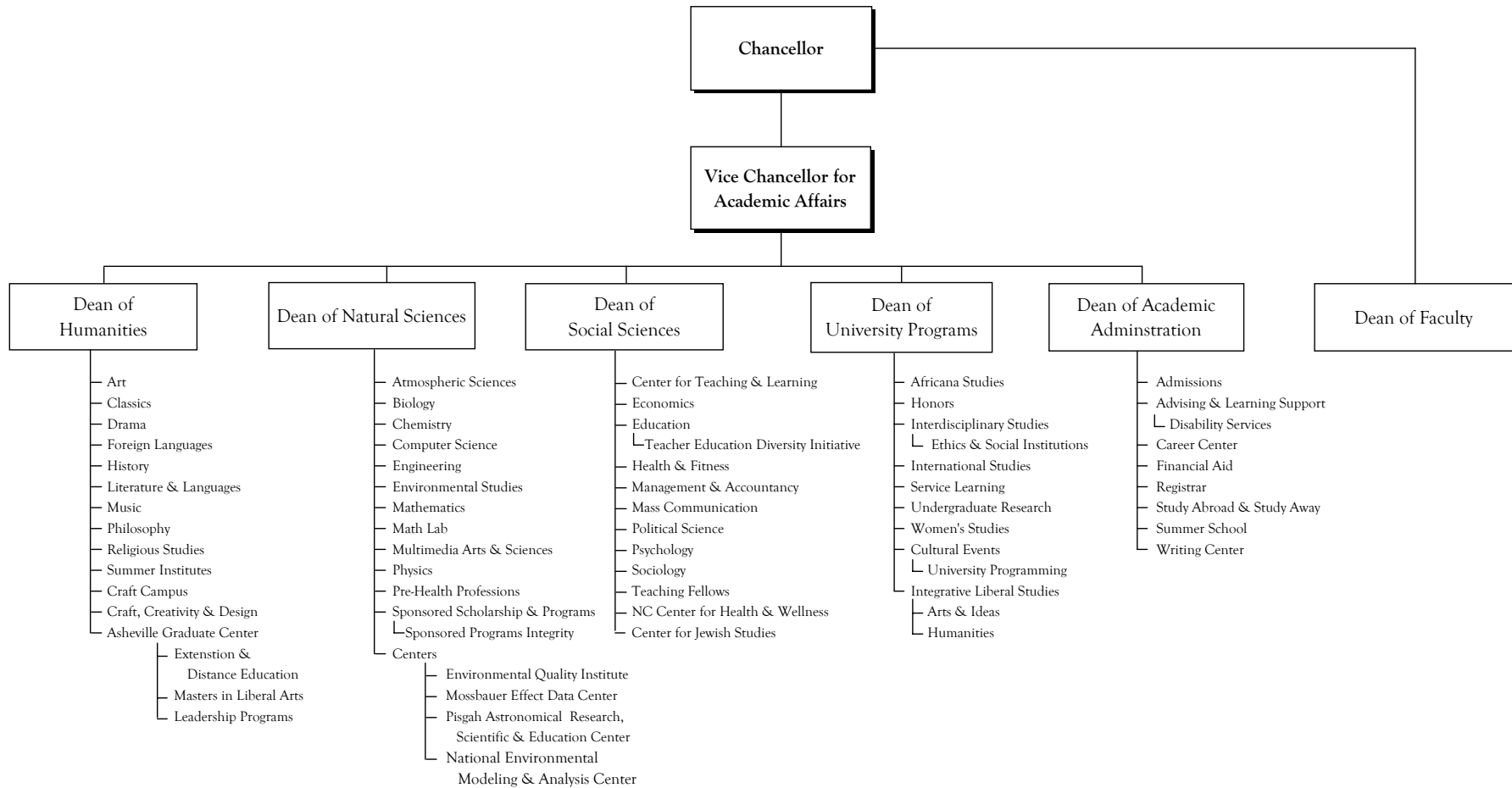


Figure 8
Organizational Chart for Finance and Operations

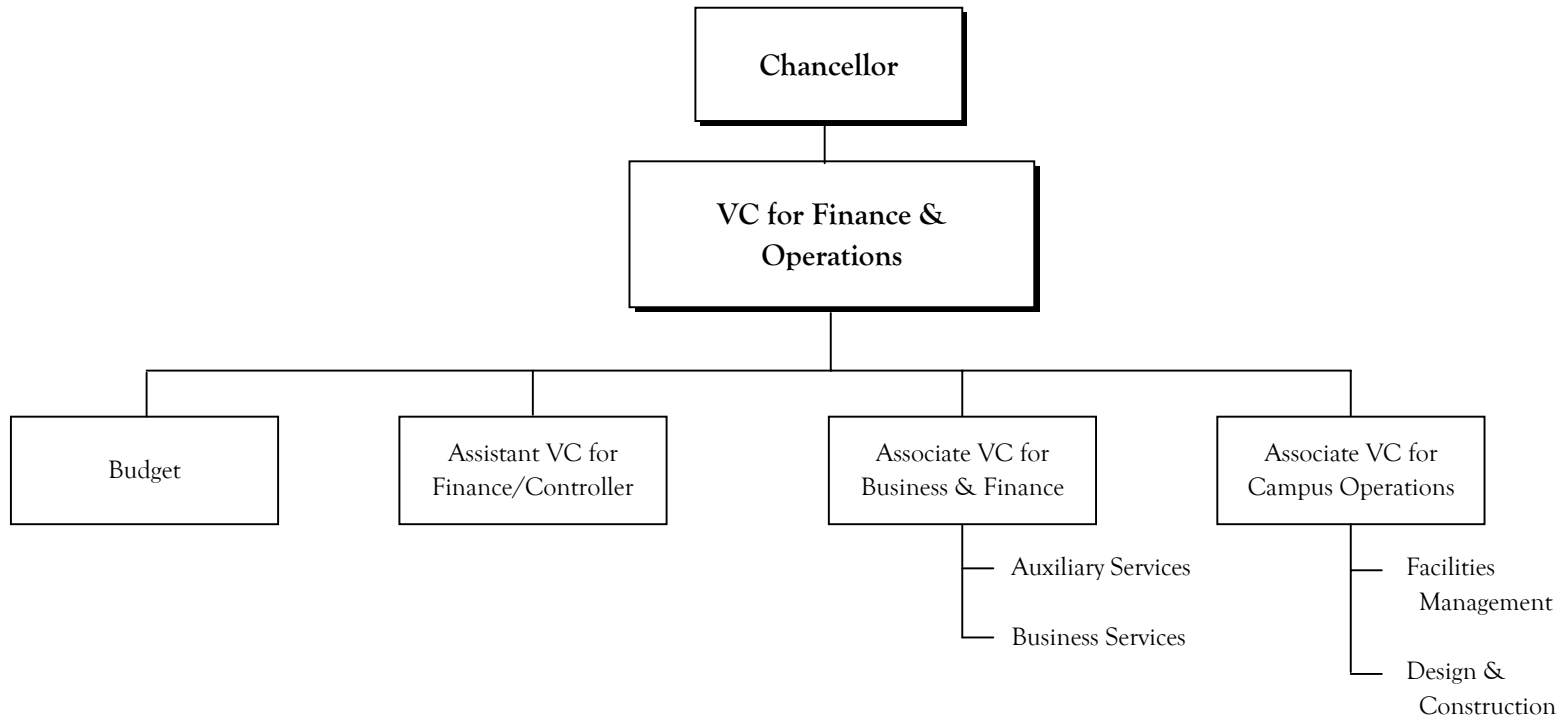
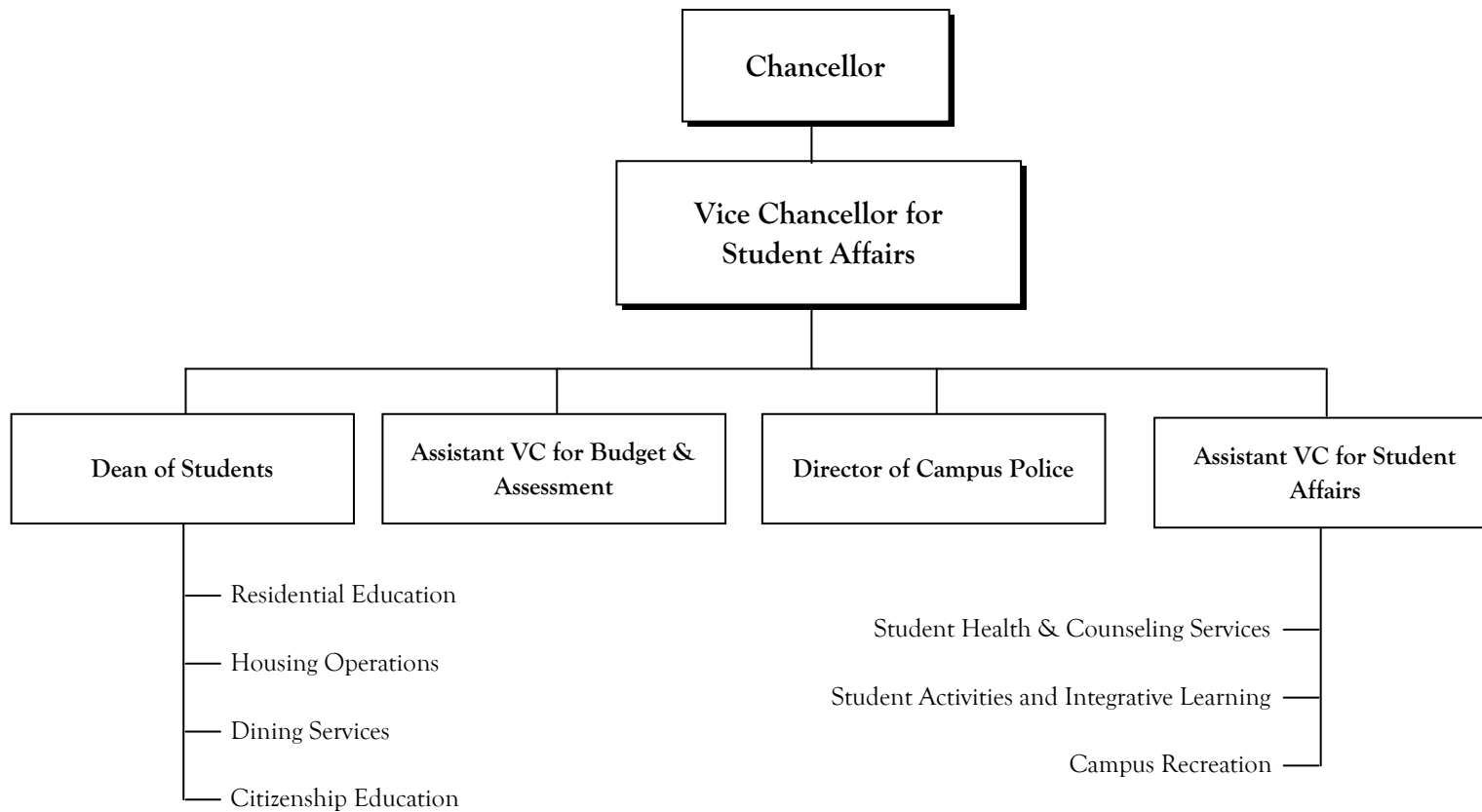


Figure 9
Organizational Chart for Student Affairs



55

Figure 10
Organizational Chart for Alumni & Development

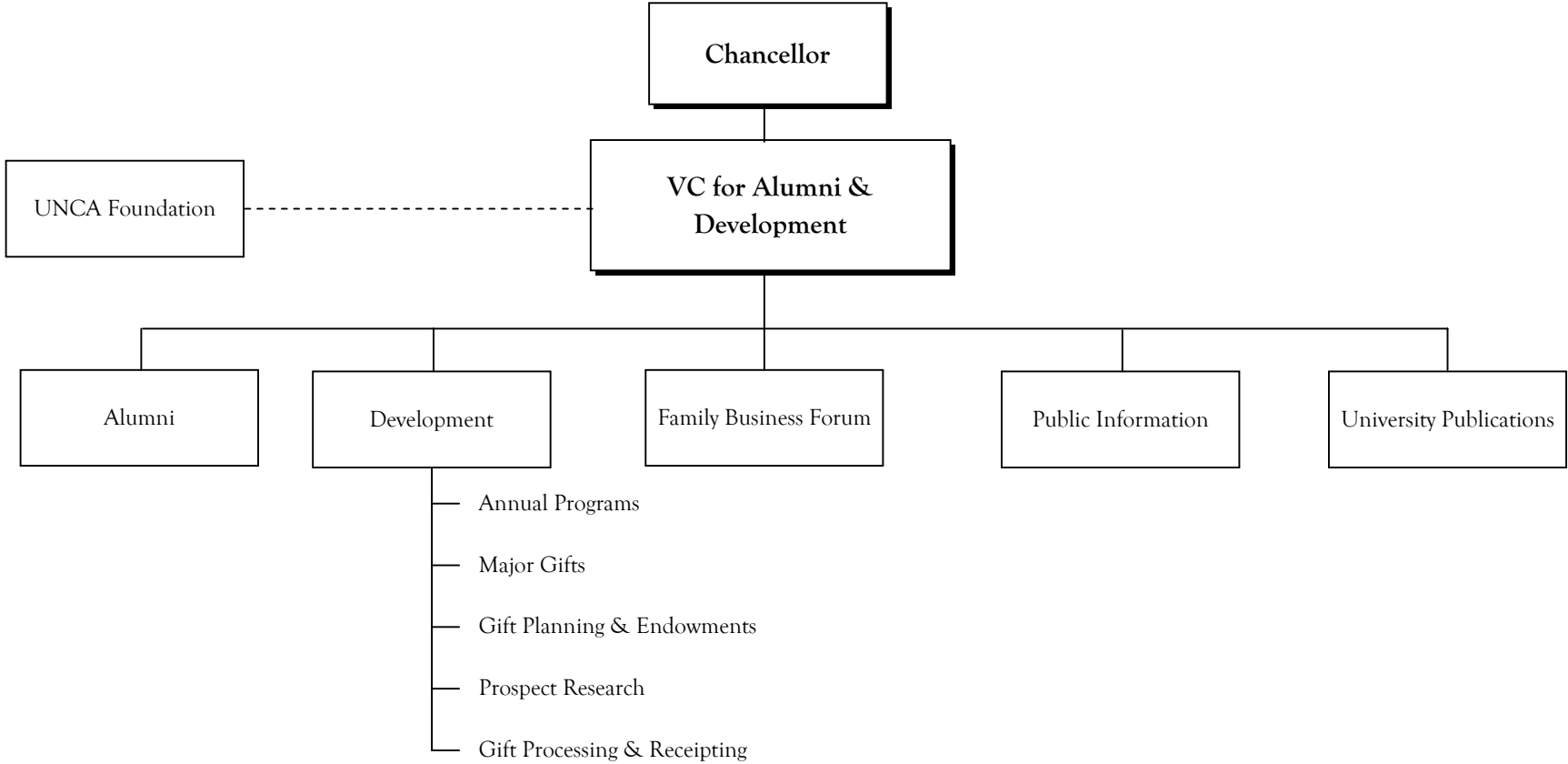


Table 39

Organization and Personnel 2007-08

Office of the Chancellor

Chancellor	Anne Ponder
Chief of Staff.....	Christine Riley
University General Counsel.....	Tom Lawton
Special Assistant to the Chancellor.....	Wilma Sherrill
Special Assistant to the Chancellor for External Affairs.....	Jesse Ray
Internal Auditor	Monique Taylor
Dean of Faculty.....	Sam Schuman
Director of Athletics.....	Janet Cone
NC Center for Creative Retirement	Ron Manheimer
Director of Human Resources	Elizabeth Bagwell
Director of Institutional Research	Archer Gravely
Chief Information Officer & University Librarian	James Kuhlman

Academic Affairs

Vice Chancellor for Academic Affairs	Kathy Whatley (Interim)
Chief Research Officer.....	Gregg Kormanik
Director of Sponsored Scholarship & Programs	Gerard Voos

Academic Administration:

Dean	Patricia McClellan
Dean of Admissions	(Vacant)
Assistant Director of Advising & Learning Support.....	Calley Stevens Taylor
Director of Career Center.....	Eileen Buecher
Asst. Director of Advising & Learning Support - Disability Services	Ethan Fesperman
Registrar	Debbie Race
Director of Study Away Programs	Bonnie Parker (Interim)
Director of Writing Center.....	Mary Alm

Humanities

Dean.....	Bill Spellman
Art, Chair	Robert Dunning
Classics, Chair	Sophie Mills
Drama, Chair	Rob Bowen
Foreign Languages, Chair	Greta Trautman
History, Chair	Dan Pierce
Literature and Language, Chair	Gwen Ashburn
Masters in Liberal Arts, Director	Bill Spellman
Music, Chair	Wayne Kirby
Philosophy, Chair	Brian Butler
Conferences & Institutes, Director	Ann Martin
Asst. Provost for Graduate & Continuing Education	Sandra Byrd
Director of Extension & Distance Education.....	Elaine Fox
Director of Leadership Programs	Gerry Goertz

Natural Sciences:

Dean.....	Greg Kormanik (Interim)
Atmospheric Science, Chair	Doug Miller
Biology, Chair	Betsy Wilson
Chemistry, Chair	Keith Krumpke
Computer Science, Chair	Dean Brock
Environmental Studies, Chair	Kevin Moorhead
Joint UNCA/NCSU Engineering Director.....	Yusef Fahmy
Mathematics, Chair	David Peifer
Multimedia Arts and Sciences, Chair	Lorraine Walsh
Physics, Chair	Randy Booker

Social Sciences:

Dean.....	Lisa Friedenberg
Center for Teaching & Learning, Director.....	Bruce Larson
Director of Teaching Fellows	Brenda Hopper
Economics, Chair	Jeff Konz
Education, Chair	Jeanne McGlenn
Health and Wellness, Chair.....	Keith Ray
Management and Accountancy, Chair	Claudel McKenzie
Mass Communication, Chair	Alan Hantz
Political Science, Chair	Bill Sabo (Interim)
Psychology, Chair	Pam Laughon
Sociology, Chair	Volker Frank

University Programs:

Dean.....	Edward Katz
Director of Africana Studies	(Vacant)
Director of Arts & Ideas	Laura Facciponti
Director of Cultural & Special Events.....	Bunny Halton-Subkis
Director of Honors.....	Blake Hobby
Director of Humanities.....	Cindy Ho
Director of Interdisciplinary Programs	Peg Downes
Director of International Studies Programs	Linda Cornett
Director of Undergraduate Research.....	Mark Harvey & Herman Holt (Co-Directors)
Director of Women's Studies.....	Alice Weldon

Office of Finance and Operations

Vice Chancellor for Finance and Operations.....	Phil Richman (Interim)
Associate Vice Chancellor for Finance	Suzanne Bryson
Associate Vice Chancellor for Campus Operations	Steve Baxley
Assistant Vice Chancellor for Finance /University Controller	Karen Shaw
Assistant Provost of Budgeting.....	Pat Catterfeld
Director of Auxiliary Services	David Perkins
Director of Business Service.....	Brenda McKinney
Director of Design and Construction	(Vacant)
Director of Facilities Management.....	David Todd
Director of Purchasing	Betty Ponder
University Budget Director	Steve Mack

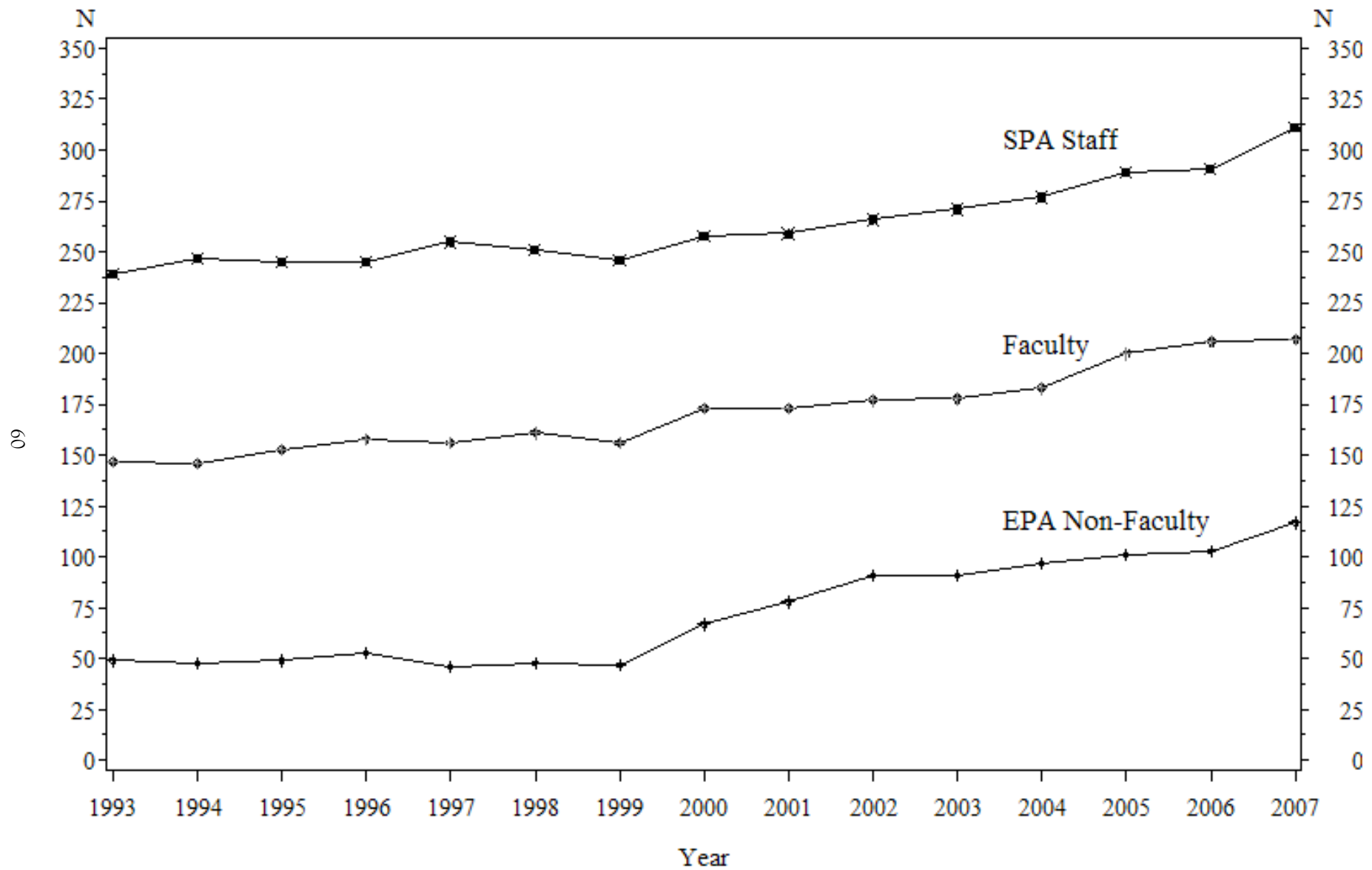
Alumni & Development

Vice Chancellor for Alumni & Development	William P. Massey
Associate Vice Chancellor for Alumni.....	Kevan Frazier
Associate Vice Chancellor for Development	Jim Brewer
Assistant Vice Chancellor for Planned Giving	Julie Heinitsh
Assistant Vice Chancellor for Principal Gifts	Mignon Durham
Director of Advancement Services.....	Julia Fuog Caudill
Director of Public Information	Merianne Epstein
Director of University Publications	Ashlea Allen

Student Affairs

Vice Chancellor for Student Affairs	Bill Haggard
Assistant Vice Chancellor for Student Affairs	Calvin A. Kelly
Assistant Vice Chancellor for Budgeting and Assessment.....	John Bucher
Dean of Students.....	Jacquelyn McHargue
Director of Campus Recreation.....	Chad Morgan (Interim)
Director of SAIL (Student Activities & Integrative Learning).....	Meg Dutnell
Director of Campus Police.....	Steve Lewis
Director of Dining Services.....	Danny Dawkins
Director of Housing Operations	Vollie Barnwell
Director of Residential Education	Melanie Rhodarmer
Director of Student Health & Counseling Center.....	Jay Cutspec

Figure 11: Full-Time Employees by Type: 1993-2007



Notes:

- (1) EPA non-faculty employees include administrators, librarians, athletic coaches and other professional staff
- (2) Arboretum employees are not included

Table 40

Employees by Employment Status, Job Class, Sex and Race
Fall 2007

Job Class		Full-Time			Part-Time			Status
		Female	Male	Subtotal	Female	Male	Subtotal	Totals
Exec/Admin/Mgmt	White	25	21	46	0	0	0	46
	Black	0	1	1	0	1	1	2
	Class Total	25	22	47	0	1	1	48
Faculty	White	72	109	181	53	54	107	288
	Black	4	4	8	4	2	6	14
	Hispanic	4	3	7	1	1	2	9
	Asian	4	5	9	2	0	2	11
	Am Indian	0	2	2	0	0	0	2
	Class Total	84	123	207	60	57	117	324
Other Professional	White	64	44	108	6	1	7	115
	Black	7	3	10	0	0	0	10
	Hispanic	0	2	2	0	0	0	2
	Class Total	71	49	120	6	1	7	127
Technical/Para Prof	White	26	22	48	3	2	5	53
	Black	2	0	2	0	0	0	2
	Asian	1	0	1	0	0	0	1
	Class Total	29	22	51	3	2	5	56
Clerical	White	76	14	90	14	1	15	105
	Black	7	1	8	1	0	1	9
	Class Total	83	15	98	15	1	16	114
Skilled Crafts	White	2	23	25	0	0	0	25
	Black	0	2	2	0	0	0	2
	Class Total	2	25	27	0	0	0	27
Service/Maintenance	White	32	39	71	0	0	0	71
	Black	3	9	12	0	1	1	13
	Hispanic	0	1	1	0	0	0	1
	Class Total	35	49	84	0	1	1	85
Race Totals	White	297	272	569	76	58	134	703
	Black	23	20	43	5	4	9	52
	Hispanic	4	6	10	1	1	2	12
	Asian	5	5	10	2	0	2	12
	Am Indian	0	2	2	0	0	0	2
	Class Total	329	305	634	84	63	147	781
Total UNCA		329	305	634	84	63	147	781

NOTE: Does not include Arboretum employees.

Table 41

Full-time Instructional Faculty by Rank, Sex and Tenure Status
Five-Year Trend

Year	Rank	Male		Female		Total	
		N	Tenured	N	Tenured	N	Tenured
2003	Professor	46	46	6	6	52	52
	Assoc Professor	25	24	23	22	48	46
	Asst Professor	24	1	26	0	50	1
	Instructor	2	0	0	0	2	0
	Lecturer	12	0	10	0	22	0
	Research/Visiting	2	0	2	0	4	0
	Total	111	71	67	28	178	99
2004	Professor	48	47	8	8	56	55
	Assoc Professor	26	22	23	23	49	45
	Asst Professor	25	1	22	1	47	2
	Lecturer	15	0	12	0	27	0
	Research/Visiting	1	0	2	0	3	0
	Total	115	70	67	32	182	102
2005	Professor	49	48	10	10	59	58
	Assoc Professor	27	26	27	26	54	52
	Asst Professor	24	1	19	1	43	2
	Instructor	0	0	1	0	1	0
	Lecturer	18	0	20	0	38	0
	Research/Visiting	2	0	2	0	4	0
	Total	120	75	79	37	199	112
2006	Professor	48	46	14	14	62	60
	Assoc Professor	31	30	23	22	54	52
	Asst Professor	21	1	21	1	42	2
	Instructor	0	0	1	0	1	0
	Lecturer	23	0	20	0	43	0
	Research/Visiting	1	0	3	0	4	0
	Total	124	77	82	37	206	114
2007	Professor	45	44	13	13	58	57
	Assoc Professor	31	30	28	24	59	54
	Asst Professor	23	2	25	1	48	3
	Lecturer	24	0	17	0	41	0
	Research/Visiting	0	0	1	0	1	0
	Total	123	76	84	38	207	114

Table 42

Full-time Instructional Faculty* with Terminal Degrees by Rank and Department
Fall 2007

Department	Professor		Associate Professor		Assistant Professor		Instructor		Lecturer		Total	
	Total N	Pct w/ TD	Total N	Pct w/ TD	Total N	Pct w/ TD	Total N	Pct w/ TD	Total N	Pct w/ TD	Total N	Pct w/ TD
Art	3	100.0	2	100.0	3	100.0			1	100.0	9	100.0
Atmospheric Sciences	1	100.0	1	100.0	2	100.0					4	100.0
Biology	3	100.0	3	100.0	3	100.0					9	100.0
Chemistry	3	100.0	3	100.0	2	100.0			2	50.0	10	90.0
Classics	1	100.0	3	100.0							4	100.0
Computer Science	2	100.0	2	100.0	1	100.0			1	0.0	6	83.3
Drama			3	100.0	2	100.0			1	100.0	6	100.0
Economics	4	100.0	3	100.0	1	100.0					8	100.0
Education	2	100.0	3	100.0	3	100.0			2	0.0	10	80.0
Environmental Studies	3	100.0	2	100.0	2	100.0			1	100.0	8	100.0
Foreign Languages	2	100.0	4	100.0	3	100.0			4	25.0	13	76.9
Health & Wellness			2	100.0	1	100.0			3	0.0	6	50.0
History	2	100.0	2	100.0	2	100.0					6	100.0
Humanities									5	20.0	5	20.0
Literature	8	100.0	3	100.0	2	50.0			4	50.0	17	82.4
Management	2	50.0	2	50.0	3	100.0			5	20.0	12	50.0
Mass Communication	3	100.0	1	100.0	1	100.0			2	50.0	7	85.7
Mathematics	2	100.0	5	100.0	3	100.0			4	25.0	14	78.6
Multimedia Arts and Sciences					3	100.0			2	50.0	5	80.0
Music	1	100.0	1	100.0	3	100.0			1	0.0	6	83.3
Philosophy	1	100.0	3	100.0	1	100.0					5	100.0
Physics	5	100.0			1	100.0			1	0.0	7	85.7
Political Science	4	100.0	2	100.0	1	100.0					7	100.0
Psychology	4	100.0	3	100.0	5	100.0					12	100.0
Religious Studies			1	100.0							1	100.0
Sociology	2	100.0	6	100.0					2	50.0	10	90.0
Total	58	98.3	60	98.3	48	97.9	0	0.0	41	31.7	207	85.0

*Includes visiting and research professors with teaching duties

Table 43
Full-time Instructional Faculty Salaries by Rank
Five-Year Trend

Year	Rank	N	Salary			
			Mean	Min	Max	Total Outlay
2003	Professor	52	69,198	50,000	100,625	3,598,318
	Associate Professor	48	52,144	43,794	98,562	2,502,893
	Assistant Professor	50	44,837	40,000	62,125	2,241,870
	Lecturer	22	35,648	28,625	53,748	784,253
	University Total	178	52,727	28,625	100,625	9,385,459
2004	Professor	56	74,514	53,489	105,098	4,172,808
	Associate Professor	49	54,872	47,529	83,603	2,688,718
	Assistant Professor	47	48,568	41,120	69,045	2,282,715
	Lecturer	27	38,188	28,000	58,928	1,031,077
	University Total	182	56,678	28,000	105,098	10,315,318
2005	Professor	59	75,196	55,569	106,098	4,436,536
	Associate Professor	54	55,814	48,519	84,753	3,013,948
	Assistant Professor	43	48,551	42,500	72,195	2,087,684
	Lecturer	38	38,600	28,350	65,000	1,466,784
	University Total	199	56,510	28,350	106,098	11,245,502
2006	Professor	62	77,920	60,160	108,274	4,831,045
	Associate Professor	54	59,985	52,269	89,393	3,239,195
	Assistant Professor	42	52,579	44,000	76,235	2,208,304
	Lecturer	43	42,162	28,500	69,040	1,812,962
	University Total	206	59,840	28,500	108,274	12,327,097
2007	Professor	58	83,982	65,712	117,170	4,870,936
	Associate Professor	59	65,496	57,359	89,691	3,864,255
	Assistant Professor	48	57,931	50,000	81,822	2,780,701
	Lecturer	41	47,975	32,000	76,183	1,966,991
	University Total	207	65,393	32,000	117,170	13,536,327

NOTE: Instructors, research and visiting professors are not shown in detail but are included in University Total

Table 44
Faculty Salary Comparisons
2006-07

	Professor	Associate Professor	Assistant Professor
UNC Asheville	77,900	59,500	52,600
AAUP-Public Comparisons			
Doctoral Institutions	113,389	76,639	65,424
Comprehensive	83,361	65,831	55,095
Baccalaureate	79,929	61,890	51,248
UNC System Comparisons			
Appalachian State	80,700	66,400	57,500
East Carolina	86,300	64,900	58,500
Elizabeth City	72,800	64,400	55,600
Fayetteville State	77,300	66,600	59,500
NC A & T	85,500	69,900	61,000
NC Central	92,100	71,900	62,100
North Carolina State	103,900	77,400	66,300
UNC-Chapel Hill	126,800	85,500	71,800
UNC-Charlotte	97,600	72,200	63,200
UNC-Greensboro	95,300	72,000	58,800
UNC-Pembroke	83,600	63,400	53,800
UNC-Wilmington	85,800	69,300	58,500
Western Carolina	81,300	67,300	56,800
Winston-Salem	74,800	68,000	61,500
UNC System Average	88,113	69,247	59,833
Peer Institution Comparisons			
Bucknell University (PA)	109,200	79,500	66,000
Eastern Connecticut State Univ	88,100	66,100	55,400
Evergreen State College (WA)	n/a	n/a	n/a
Furman University (SC)	88,500	67,200	51,600
Lafayette College (PA)	108,700	79,500	64,800
Univ of Mary Washington (VA)	81,700	61,000	48,800
Massachusetts C. of Liberal Arts	74,200	61,900	50,600
New College of Florida	80,500	62,800	49,500
Ramapo College of New Jersey	100,300	82,000	59,400
Richard Stockton College (NJ)	103,200	77,900	57,500
St. Mary's College (MD)	82,700	61,400	51,900
SUNY College at Geneseo (NY)	70,800	61,300	52,100
Truman State University (MO)	69,300	52,200	45,500
Union College (NY)	98,400	71,300	60,400
Univ of Minnesota at Morris	73,600	59,700	48,200
Peer Institution Average	87,800	67,414	54,407

Source: *The Chronicle of Higher Education*, April 20, 2007

Fiscal Resources

Table 45

Current Fund Revenues and Expenditures: Five-Year Trend

Revenue Source	2002-03		2003-04		2004-05		2005-06		2006-07	
	Amount	Percent	Amount	Percent	Amount	Percent	Amount	Percent	Amount	Percent
Tuition and Fees	7,988,984	14.2	12,690,775	18.5	14,413,409	19.1	15,259,564	20.5	16,157,240	16.1
Grants and Contracts- operation	3,588,269	6.4	4,618,012	6.7	4,499,973	6.0	4,630,367	6.2	6,191,511	6.2
Sales and Services of Auxiliary Ent.	9,735,937	17.4	8,355,537	12.1	9,473,995	12.6	9,149,494	12.3	10,077,783	10.0
Other Operating Sources	324,716	0.6	248,040	0.4	328,670	0.4	528,543	0.7	1,046,854	1.0
State Appropriations	22,870,180	40.8	25,495,221	37.1	27,087,456	36.0	30,326,631	40.7	33,646,626	33.5
Grants - nonoperating	154,384	0.3	195,276	0.3	2,553,377	3.4	2,012,222	2.7	2,292,690	2.3
Gifts	1,503,989	2.7	1,012,967	1.5	1,370,743	1.8	1,441,854	1.9	1,449,193	1.4
Investment income	708,898	1.3	1,134,082	1.6	1,027,336	1.4	1,194,397	1.6	1,848,930	1.8
Other nonoperating revenue	5,293	0.0	4,637	0.0	5,056	0.0	657,332	0.9	211,036	0.2
Other revenues and additions	9,219,929	16.4	15,028,921	21.8	14,555,227	19.3	9,309,028	12.5	27,566,950	27.4
Total Revenues & Additions	56,100,579		68,783,468		75,315,242		74,509,432		100,488,813	
Expenses and other Deductions										
Instruction	15,967,018	30.6	17,577,957	30.8	19,199,716	29.2	20,650,966	29.7	22,793,050	31.1
Research	598,567	1.1	465,019	0.8	555,845	0.8	1,157,980	1.7	777,719	1.1
Public Service	3,317,628	6.4	4,016,609	7.0	5,553,990	8.4	5,472,175	7.9	5,824,949	7.9
Academic Support	3,380,341	6.5	3,230,901	5.7	3,549,774	5.4	4,014,370	5.8	4,012,216	5.5
Student Services	2,956,356	5.7	3,224,353	5.7	3,113,871	4.7	3,144,182	4.5	3,332,184	4.5
Institutional Support	4,566,149	8.8	6,020,338	10.6	5,974,275	9.1	6,747,538	9.7	7,434,335	10.1
Operation & Maintenance of Plant	4,512,033	8.6	5,114,847	9.0	6,654,601	10.1	8,516,188	12.2	9,170,819	12.5
Depreciation	4,192,562	8.0	4,512,358	7.9	5,209,134	7.9	5,513,269	7.9	3,520,824	4.8
Scholarships and Fellowships	2,009,523	3.9	1,986,815	3.5	2,060,047	3.1	2,014,526	2.9	2,808,183	3.8
Auxiliary enterprises	8,710,458	16.7	9,761,569	17.1	12,207,825	18.6	10,802,957	15.5	11,931,417	16.3
Nonoperating Exp. and Deduct.	1,954,495	3.7	1,068,914	1.9	1,659,951	2.5	1,600,895	2.3	1,710,889	2.3
Total Expenses and Deductions	52,165,130		56,979,680		65,739,029		69,635,046		73,316,585	

Source: IPEDS F-1 from UNCA Financial Affairs

Table 46
Operating Expenditures by Function
2006-07

	Salaries & Benefits	Supplies & Materials	Services	Scholarships & Fellowships	Utilities	Depreciation	Total
Instruction	19,119,239	1,416,748	2,257,063	4,571	0		22,797,621
Research	491,525	91,893	194,302	3,600	0		781,320
Public Service	3,976,331	706,184	1,028,621	21,011	113,813		5,845,960
Academic Support	2,928,200	847,350	236,666	0	0		4,012,216
Student Services	2,292,665	143,767	895,752	5,690	0		3,337,874
Institutional Support	5,905,973	296,907	1,231,717	17,556	3		7,452,156
Operations & Maintenance/Plant	4,800,474	2,637,954	334,517	0	1,397,873		9,170,818
Student Financial Aid	-7,000	135	6,600	2,727,638	0		2,727,373
Auxiliary Enterprises	3,990,009	3,195,841	4,097,724	28,117	647,843		11,959,534
Depreciation						3,520,824	3,520,824
Total Operating Expenses	43,497,416	9,336,779	10,282,962	2,808,183	2,159,532	3,520,824	71,605,696
Percent of Total	61%	13%	14%	4%	3%	5%	100%

Source: *Controller's Office*

Table 47
Tuition and Fees per Year

						5-Year Pct Change
	03-04	04-05	05-06	06-07	07-08	
Undergraduate Tuition:						
In-State:						
Full-Time (12 or more hrs.)	1,672	1,896	1,897	2,172	2,307	38.0
3/4-Time (9-11 hrs.)	1,254	1,422	1,422	1,630	1,730	38.0
1/2-Time (6-8 hrs.)	836	948	948	1,086	1,154	38.0
1/4-Time (1-5 hrs.)	418	474	474	542	577	38.0
Out-of-State:						
Full-Time (12 or more hrs.)	10,497	11,097	11,697	12,297	13,297	26.7
3/4-Time (9-11 hrs.)	7,872	8,322	8,772	9,222	9,973	26.7
1/2-Time (6-8 hrs.)	5,248	5,548	5,848	6,148	6,649	26.7
1/4-Time (1-5 hrs.)	2,624	2,774	2,924	3,074	3,324	26.7
Graduate Tuition:						
In-State:						
Full-Time (9 or more hrs.)	1,731	2,255	2,255	2,530	2,705	56.3
3/4-Time (6-8 hrs.)	1,300	1,692	1,692	1,898	2,029	56.1
1/2-Time (3-5 hrs.)	867	1,128	1,128	1,266	1,353	56.1
1/4-Time (1-2 hrs.)	431	564	564	632	676	56.8
Out-of-State:						
Full-Time (9 or more hrs.)	10,670	11,869	11,869	12,469	13,569	27.2
3/4-Time (6-8 hrs.)	8,004	8,902	8,902	9,352	10,177	27.1
1/2-Time (3-5 hrs.)	5,335	5,934	5,934	6,234	6,785	27.2
1/4-Time (1-2 hrs.)	2,667	2,968	2,968	3,118	3,392	27.2
Total Fees (Full-Time):	1,427	1,495	1,629	1,709	1,858	30.2
Room (Double Occupancy):						
Founders Hall	2,160	2,160	2,560	3,200	3,450	59.7
Mills Hall	2,560	2,800	3,200	3,200	3,450	34.8
South Ridge	2,560	2,800	3,200	3,200	3,450	34.8
West Ridge	2,560	2,800	3,200	3,200	3,450	34.8
Governor's Hall		3,050	3,450	3,200	3,450	-
Room (Single Occupancy):						
Governor's Village	2,900	2,800	3,200	3,360	3,600	24.1
Governor's Hall		3,550	4,150	4,360	4,700	-
Board:						
Meal Plan (Carte Blanc)	2,430	2,490	2,590	2,680	2,780	14.4

Source: Cashiers Office/Budget Office

Table 48

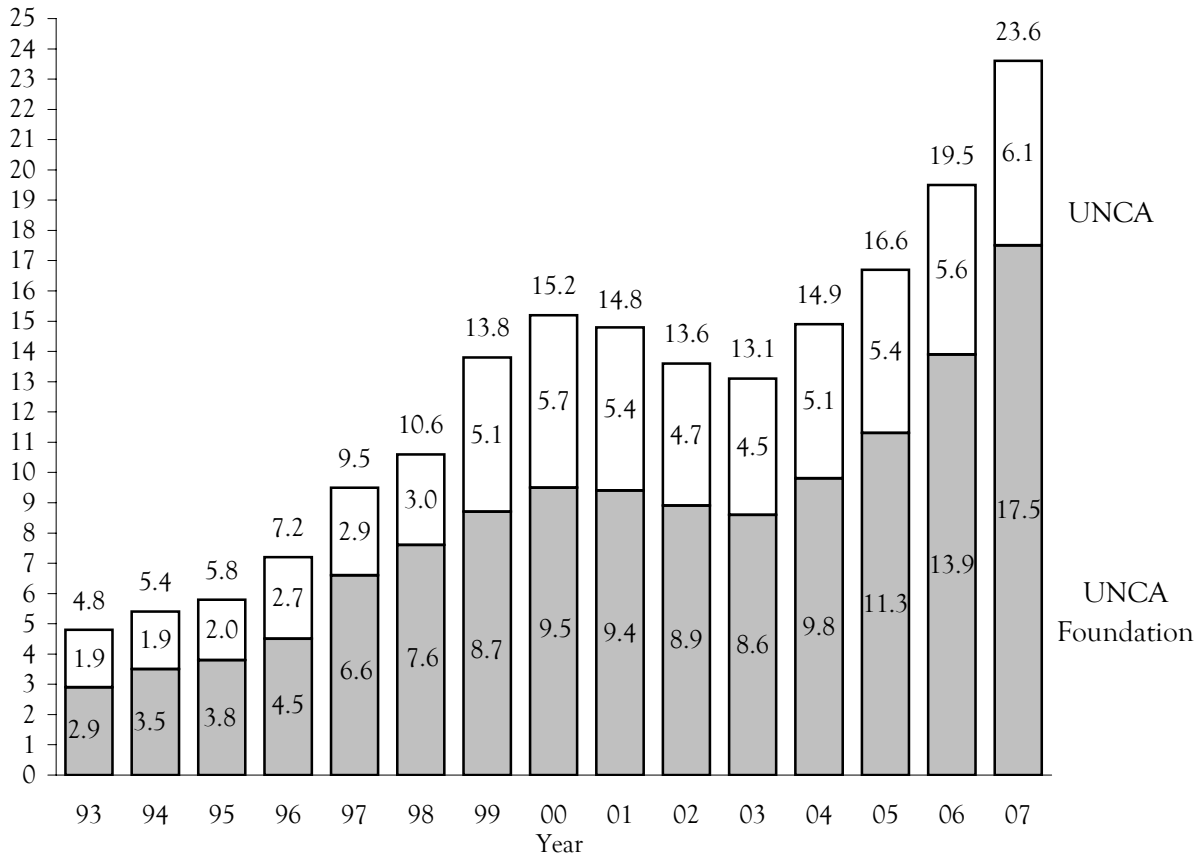
External Grants and Contracts Funding Amounts by Fiscal Year

	FY 1998	FY 1999	FY 2000	FY 2001	FY 2002	FY 2003	FY 2004	FY 2005	FY 2006	FY 2007
Total Submissions	39	53	49	52	63	64	81	51	56	60
Total Awards	25	44	44	40	19	46	61	30	34	41
Num of Different Investigators	21	30	27	40	15	31	54	30	19	29
Total Amount Awarded	\$374,730	\$2,759,605	\$1,604,253	\$1,210,975	\$369,418	\$991,007	\$4,781,215	\$1,327,827	\$4,205,235	\$5,394,623

Source: UNCA Sponsored Scholarship and Programs

Amount in
Millions

Figure 12
Endowed Funds



Source: Controller's Office

Table 49
Source of Outright Gift Income by Year

	2000-01	2001-02	2002-03	2003-04	2004-05	2005-06	2006-07
Alumni	150,769	186,251	133,712	133,951	661,941	142,638	265,488
Parents	86,313	32,887	42,391	39,344	138,812	52,660	549,920
Other Individuals	1,082,153	888,201	770,626	649,674	688,704	2,093,906	1,117,877
Foundations	1,357,961	277,445	389,900	350,598	299,945	280,750	235,450
Corporations	553,965	524,510	428,840	849,613	238,801	329,014	303,939
Religious Organizations	0	500	970	70	2,200	1,500	1,550
Fundraising Consortia	0	0	0	0	0	0	0
Other Organizations	34,945	73,781	131,077	17,099	14,124	57,865	733,091
Total Giving*	3,266,106	1,983,575	1,897,516	2,040,349	2,044,527	2,958,333	3,207,295

*Deferred giving not included

Source: Voluntary Support of Education Survey

Table 50
Alumni Donations

Fiscal Year	# Alumni of Record	Number Donors	Total Giving*	Giving Rate
1997-98	5,756	398	\$71,004	6.9%
1998-99	6,790	643	\$133,579	9.5%
1999-00	7,316	751	\$121,979	10.3%
2000-01	7,747	898	\$150,769	11.6%
2001-02	8,126	926	\$186,250	11.4%
2002-03	8,454	1,180	\$133,712	14.0%
2003-04	9,900	1,094	\$133,951	11.1%
2004-05	10,639	986	\$661,941	9.3%
2005-06	*10,639	599	\$142,638	5.6%
2006-07	10,990	1,044	\$265,488	9.5%

*In previous years, the # on record at June 30 (end of FY) was used. This year, the # on record at July 1 (beginning FY) was used.

**Deferred giving not included

Source: *Voluntary Support of Education Survey*

Table 51
Outright Gift Income Summary

	2001-02	2002-03	2003-04	2004-05	2005-06	2006-07
Gifts for Current Operations						
Unrestricted	206,901	206,310	537,147	193,524	138,938	295,177
Restricted						
Academic Divisions	4,900	1,900	2,500	3,400	4,790	300
Faculty & Staff Compensation	0	0	0	0	0	0
Research	2,000	0	0	20,000	0	0
Public Service & Extension	0	0	0	0	0	0
Library	3,255	392	214	14	385	82
Operation and Maint. of Plant	101,700	35,400	10,513	1,785	11,300	15,050
Student Financial Aid	256,073	259,170	242,821	226,481	223,059	164,384
Athletics	251,186	266,615	218,138	321,757	231,392	223,160
Other	217,607	281,560	456,222	807,938	239,147	717,106
Total Current Operations	1,043,622	1,051,347	1,467,555	1,574,899	849,011	1,415,259
Gifts for Capital Purposes						
Property, Building, Equipment	219,128	601,118	353,577	32,320	137,043	1,277,314
Endowment - Unrestricted	0	11,200	10	93	250	325
Endowment - Restricted	718,409	232,187	217,578	425,670	1,954,044	506,676
Loan Funds	2,416	1,664	1,629	11,545	17,985	7,721
Total Capital Purposes	939,953	846,169	572,794	469,628	2,109,322	1,792,036
Total Outright Giving	1,983,575	1,897,516	2,040,349	2,044,527	2,958,333	3,207,295

Source: *Voluntary Support of Education Survey*

Figure 13

Campus Map

Click on the following link to go to the Campus Map:

<http://www.unca.edu/campusmap/>

Table 52
Building Inventory
Fall 2007

	Year Constructed	Building Cost	Estimated Replacement Cost	Accessible (Sq. Ft.)	Assignable (Sq. Ft.)	Gross (Sq. Ft.)
Academic and Administrative						
Carmichael Hall	1966	548,000	5,719,484	18,019	18,019	31,441
Carol Belk Theatre	1976	477,000	2,650,491	7,761	7,761	10,715
Dining Hall	1995	4,290,000	14,786,959	26,359	26,359	60,792
Health & Fitness Center	1997	6,075,600	12,973,463	44,423	44,501	53,000
Highsmith Union	2004	15,800,000	21,331,453	53,936	53,936	72,000
Justice Center	1963	1,205,732	12,554,965	15,855	35,919	51,780
Karpen Hall	1990	5,600,000	15,623,957	34,024	34,024	64,000
Lipinsky Hall	1964	791,758	9,346,474	21,516	21,516	38,173
New Hall	2006	5,500,000	6,006,000	17,211	17,211	31,855
Owen Hall	1979	1,809,259	8,788,476	28,879	28,879	47,366
Phillips Hall	1963	493,800	4,463,987	8,730	12,752	18,574
Plant Maint. Storage	1990	5,000	8,667	484	484	509
Plant Maintenance	1963	272,414	3,487,490	13,554	14,447	15,989
Print Services	2002	174,520	243,454	3,694	3,694	4,000
Ramsey Library	1965	685,637	11,717,967	35,608	35,608	47,641
Ramsey Library (New Wing)	1990	6,400,000	13,670,961	43,800	43,800	55,926
Reuter Center	2003	3,900,000	5,333,808	13,752	13,752	19,580
Rhoades Hall	1961	1,121,180	7,532,979	16,653	16,653	26,720
Rhoades Science Tower	1966	396,456	4,184,987	7,497	7,497	14,624
River Road Warehouse	1995	400,000	1,777,935	20,525	20,525	22,577
Robinson Hall	1988	6,175,000	17,855,950	41,258	41,258	64,014
Sam Millar Facilities Complex	2007	5,559,215	0	21,134	21,134	27,659
Vance Hall	1967	94,000	976,498	2,164	2,164	4,222
Weizenblatt Health Center	1972	191,000	1,813,495	4,687	4,687	7,276
West Ridge Parking Deck	1999	2,474,697	3,523,808	70,200	70,200	70,200
Zageir Hall	1975	1,130,000	7,532,979	18,365	18,365	31,035
Zageir Parking Deck	2001	842,600	969,805	0	0	28,000
Residential						
Ashe Hall	1969	132,670	1,534,496	0	4,619	6,537
Founders Hall	1982	2,943,027	14,647,459	42,668	42,668	63,719
Gardner Hall	1967	146,000	1,534,496	168	4,006	6,648
Governors Hall	2003	11,500,000	15,727,897	36,098	36,098	59,500
Hoey Hall	1969	132,670	1,534,496	0	4,595	6,537
Mills Hall	1987	4,250,000	14,647,459	41,877	41,877	64,840
Moore Hall	1967	146,000	1,534,496	0	4,158	6,648
Scott Hall	1967	146,000	1,534,496	792	4,090	6,648
South Ridge Hall	1994	3,950,000	9,067,474	22,354	22,354	40,032
West Ridge Hall	1999	7,600,000	11,159,968	28,711	28,711	49,417

Figure 14: Percent of Space in Satisfactory Condition, Fall 2006

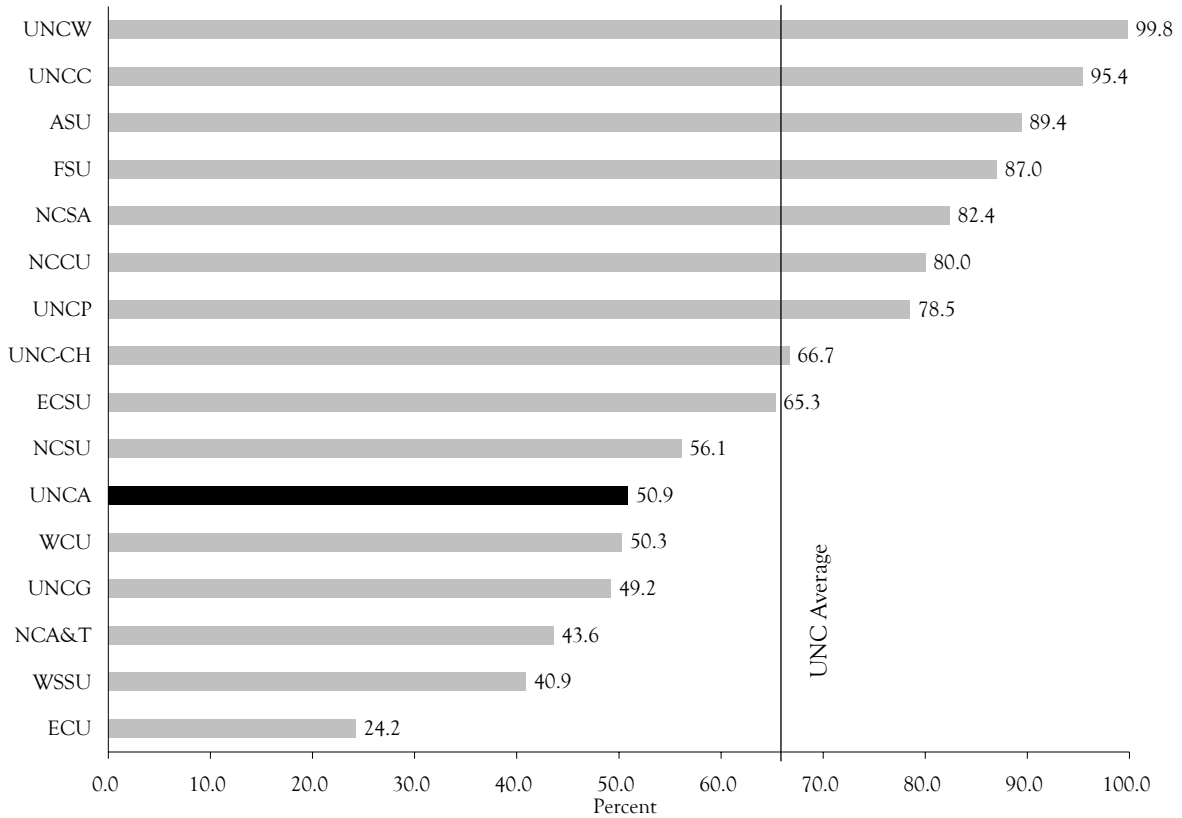
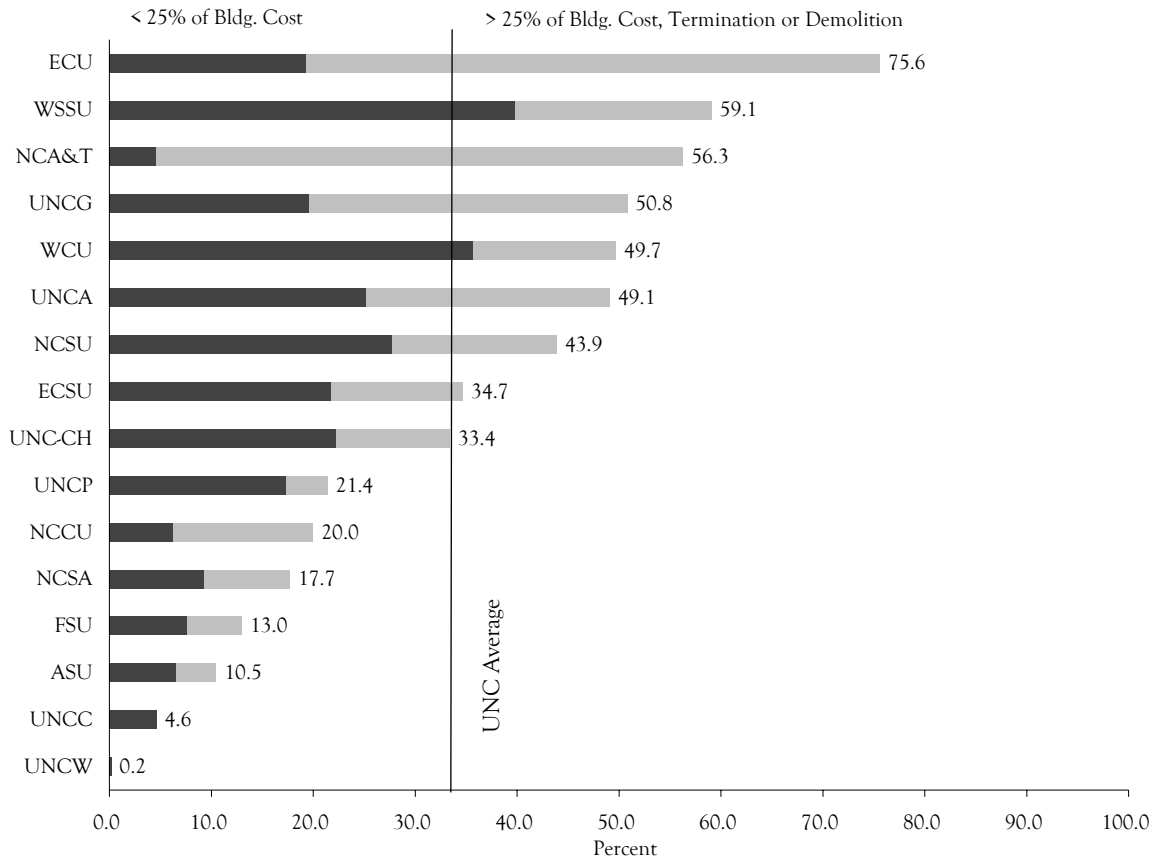


Figure 15: Percent of Space Needing Renovation by Cost Level, Fall 2006



Source: Facilities Inventory and Utilization Study (UNC General Administration)

Table 53
 Percentage of General Purpose Classrooms Utilized by Day and Time
 Fall 2007

Time	Percent of Classrooms in Use				
	Mon	Tue	Wed	Thu	Fri
08:00-08:30	38.6	43.9	35.1	43.9	33.3
08:30-09:00	38.6	43.9	35.1	43.9	33.3
09:00-09:30	89.5	84.2	91.2	84.2	52.6
09:30-10:00	89.5	75.4	91.2	73.7	52.6
10:00-10:30	93.0	75.4	91.2	73.7	75.4
10:30-11:00	82.5	77.2	78.9	75.4	73.7
11:00-11:30	91.2	75.4	87.7	73.7	77.2
11:30-12:00	50.9	71.9	70.2	70.2	45.6
12:00-12:30	50.9	64.9	70.2	64.9	45.6
12:30-01:00	70.2		73.7		61.4
01:00-01:30	50.9		52.6		56.1
01:30-02:00	70.2	77.2	75.4	75.4	73.7
02:00-02:30	57.9	78.9	61.4	75.4	54.4
02:30-03:00	80.7	78.9	82.5	75.4	64.9
03:00-03:30	68.4	75.4	73.7	66.7	22.8
03:30-04:00	68.4	75.4	73.7	66.7	22.8
04:00-04:30	50.9	75.4	52.6	70.2	12.3
04:30-05:00	52.6	35.1	54.4	36.8	10.5
05:00-05:30	54.4	35.1	56.1	40.4	8.8
05:30-06:00	14.0	35.1	14.0	35.1	7.0
06:00-06:30	50.9	42.1	45.6	43.9	7.0
06:30-07:00	50.9	42.1	45.6	43.9	
07:00-07:30	49.1	40.4	42.1	40.4	
07:30-08:00	45.6	40.4	38.6	40.4	
08:00-08:30	40.4	31.6	31.6	26.3	
08:30-09:00	19.3	17.5	12.3	8.8	
09:00-09:30	3.5	3.5	1.8		
09:30-10:00	1.8	1.8	1.8		

Table 54

Classrooms and Labs by Building
Fall 2007

	Classrooms				Class Labs				Non-Class Labs			
	N	Capacity			N	Capacity			N	Capacity		
	Rms	Min	Mean	Max	Rms	Min	Mean	Max	Rms	Min	Mean	Max
Carmichael Hall	8	30	38.8	40	1	18	18.0	18				
Carol Belk Theatre									2	24	24.5	25
Governor's Hall	1	20	20.0	20					1	20	20.0	20
Justice Center	2	20	22.5	25	1	35	35.0	35	2	1	5.5	10
Karpen Hall	18	12	30.8	74	3	12	24.0	42	4	6	14.5	20
Lipinsky Hall	1	30	30.0	30	1	75	75.0	75	15	1	5.8	16
New Classroom Bldg	9	15	23.9	30	2	15	17.5	20				
Owen Hall	4	30	40.0	50	4	10	16.3	25	12	1	8.0	36
Ramsey Library									1	22	22.0	22
Rhoades/Robinson	5	30	64.2	180	19	12	22.4	32	18	1	8.2	20
West Ridge Hall									2	1	1.0	1
Zageir Hall	9	20	30.0	40	2	20	22.5	25				
Total	57	12	33.8	180	33	10	23.4	75	57	1	8.6	36

Table 55

Residence Hall Capacity and Number of Students Housed

Residence Hall	2004			2005			2006			2007		
	Normal Capacity	Number Housed	Pct of Cap	Normal Capacity	Number Housed	Pct of Cap	Normal Capacity	Number Housed	Pct of Cap	Normal Capacity	Number Housed	Pct of Cap
Ashe Hall	26	24	92.3	25	24	96.0	25	23	92.0	25	25	100.0
Founders Hall	308	298	96.8	300	259	86.3	287	267	93.0	287	259	90.2
Gardner Hall	24	21	87.5	24	20	83.3						
Governors Hall	188	184	97.9	184	171	92.9	180	169	93.9	180	171	95.0
Hoey Hall	26	21	80.8	25	20	80.0	25	24	96.0	25	24	96.0
Mills Hall	312	306	98.1	300	265	88.3	284	279	98.2	284	264	93.0
Moore Hall	29	29	100.0	29	26	89.7	29	24	82.8	29	29	100.0
Scott Hall	25	21	84.0	24	22	91.7	24	24	100.0	24	25	104.2
South Ridge Hall	116	111	95.7	112	110	98.2	107	108	100.9	107	106	99.1
Vance Hall	1	2	200.0									
West Ridge Hall	152	150	98.7	148	145	98.0	141	141	100.0	141	123	87.2
Woodland Hills Apts.	0	110										
Total Students	1,207	1,277	105.8	1,171	1,062	90.7	1,102	1,059	96.1	1,102	1,026	93.1

Table 56
Capital Improvements
2007-08

	Est. Cost	Est. Completion Date Project Length (Construction Period)
A. Projects Under Construction		
1. Zeis Science & Multi-Media Building	22,354,000	Winter 2007
2. Pisgah House - Chancellor's Residence (private funds)	2,000,000	Winter 2008
B. Recently Completed Projects		
1. Zagier Hall renovation	2,569,100	Spring 2007
2. Millar Facilities Management Building	6,318,900	Summer 2007
C. Projects in Design - Funds Allocated		
1. North Carolina Center for Health & Wellness	42,000,000	2010
2. Rhoades Hall & Rhoades Tower renovation	8,986,000	2011
D. Project in Planning - Awaiting Construction Funding		
1. Crafts Campus (private fundraising)		
E. Future Capital Projects - currently unfunded		
1. Carmichael Hall renovation		
2. Governor's Village Residence Hall		
3. Zageir Hall addition		
4. Lipinsky Hall renovation		
5. Public Safety facility		
6. Justice Center renovation		
7. Weizenblatt Health Center renovation		

Source: *Office of Design & Construction*

Table 57
Ramsey Library Resources
Five-Year Trend

	2003	2004	2005	2006	2007
Books, Serial Files, Gov. Docs.	255,805	259,396	262,283	264,248	265,221
Current Serial Subscriptions	1,795	1,857	4,810	6,405	7,467
Microforms	839,718	857,210	861,742	862,144	860,250
Audiovisual Materials	10,249	10,768	11,374	12,319	12,947

*Note: Current serial subscriptions count now includes those in electronic format not previously reported.

SOURCE: *Ramsey Library*